

visit



**THE STABLE**  
COLBY-SAWYER'S CAMPUS STORE

OPEN  
Monday through Friday  
9 a.m. – 5 p.m.  
Saturday  
noon – 4 p.m.  
[shop.colby-sawyer.edu](https://shop.colby-sawyer.edu)

For more information, contact Malaika Sidmore,  
manager, at [malaika.sidmore@colby-sawyer.edu](mailto:malaika.sidmore@colby-sawyer.edu)  
or 603.526.1869.



Colby·Sawyer  
College

541 Main Street · New London, N.H. 03257  
800.272.1015 · [colby-sawyer.edu](https://colby-sawyer.edu)

Colby·Sawyer College  
**PARENT & FAMILY RESOURCE GUIDE**  
**2024 – 2025**

# Contents

Academic Calendar & Course Materials .....	5
Academic Programs .....	6
Access Resources .....	9
Athletics .....	10
Baird Health & Counseling Center .....	12
Clubs & Organizations .....	13
Dining Services .....	14
Financial Aid .....	15
Financial Services .....	16
Harrington Center for Experiential Learning .....	17
Important Phone Numbers .....	18
Local Businesses & Attractions .....	19
Lodging .....	22
Mail .....	23
Residential Education .....	24
Student Activities .....	25
Student Learning Collaborative .....	26
Student Success & Retention .....	27
Citizenship Education .....	28
Transportation .....	29





WELCOME TO COLBY-SAWYER COLLEGE!

You and your student are becoming part of a very special community — one dedicated to providing a personalized learning environment for students. Our commitment to the liberal arts, to hands-on learning and internship opportunities and to maximizing the beautiful and historic setting of New London, N.H., results in an integrated experience that prepares our students for professional and personal success. We recognize that you are an integral part of your student’s support network. As such, we have developed this Resource Guide to provide you with helpful information about the academic calendar, campus life and contact information for select departments on campus.

Please do not hesitate to contact us — we are here to assist you and your student in preparing for a successful journey at Colby-Sawyer.

Sincerely,

*Laura A. Sykes*

Laura Sykes '98  
Interim President and Professor of Arts & Sciences  
Volanakis Family Presidential Chair

FALL SEMESTER 2024

AUG. 30	New Student Arrival Check-In and Orientation Begins
SEPT. 2	Returning Students Arrive
SEPT. 3	<b>First Day of Classes</b>
OCT. 14 – 15	Fall Recess
OCT. 13 – 15	Homecoming Weekend
NOV. 27 – 29	Thanksgiving Recess (no classes)
DEC. 6	Last Day of Classes
DEC. 7 – 8	Reading Days
DEC. 9 – 12	Final Exams

SPRING SEMESTER 2025

JAN. 21, 2025	<b>First Day of Classes</b>
FEB. 24	Winter Recess (no classes)
MAR. 17 – 21	Spring Recess (no classes)
APR. 29	Last Day of Classes
MAY 1 – 5	Final Exams
MAY 10	Commencement

Students may purchase course materials using Colby-Sawyer’s virtual bookstore at [bncvirtual.com/colby-sawyer](https://bncvirtual.com/colby-sawyer).

# Academic Programs

## UNDERGRADUATE MAJORS

Colby-Sawyer offers a range of programs, each of which requires students to choose a major field of study and complete courses across academic disciplines. In addition to a major, students may select a concentrated area of study in select majors as well as a minor.

- Accelerated BS in Nursing
- Addiction Studies
- Business Administration
- Child Development
- Chld Development Education Prep
- Creative and Professional Writing
- Crime and Legal Studies
- Environmental Science
- Environmental Studies
- Exercise Science
- Graphic Design
- Health Science
- Healthcare Administration
- History and Political Studies
- Medical Laboratory Science
- Nursing
- Psychology
- Self-Designed Major
- Social Work
- Sociology
- Sport Management
- Studio Art

### CERTIFICATE PROGRAMS

- Coaching Certificate
- Teacher Certification

### ONLINE PROGRAMS

- RN to BS in Nursing
- RT to BS in Respiratory Therapy

### GRADUATE PROGRAMS

- MS in Nursing
- Master of Business Administration

### PRE-PROFESSIONAL TRACKS

- Pre-Law
- Pre-Medical
- Pre-Occupational Therapy
- Pre-Physical Therapy
- Pre-Physician Assistant
- Pre-Veterinary

# Academic Programs

## UNDERGRADUATE MINORS

**Minor programs are available to students pursuing baccalaureate degrees who are seeking a concentrated area of study in addition to their majors.**

Minors require at least 16, but no more than 24, credits in prescribed courses, with a minimum of 8 credits at the 300-400 level. Students may take no more than four credits of independent study to satisfy minor requirements. No more than two courses, which satisfy the requirements for a minor, may be counted toward the requirements for any major or another minor.

Students must earn a minimum cumulative GPA of 2.00 in all courses towards a declared minor with the exception of programs that have specific or more restrictive requirements.

### The following minors are offered:

- |                         |                                |
|-------------------------|--------------------------------|
| Accounting & Finance    | Graphic Design                 |
| Art – Studio Art        | Health Care Management         |
| Ceramics                | Health Studies                 |
| Drawing                 | History                        |
| Painting                | Political Studies              |
| Photography             | Psychology                     |
| Printmaking             | Child Psychology               |
| Sculpture               | Forensic Psychology            |
| Biology                 | Counseling and Substance Abuse |
| Business Administration | Neuroscience Psychology        |
| Chemistry               | Sustainability                 |
| Contemporary Marketing  | Women’s and Gender Studies     |
| Crime and Legal Studies | Writing                        |
| Education               |                                |
| Entrepreneurship        |                                |
| Environmental Studies   |                                |

Change of major and minor forms are available at myColby-Sawyer on the myRegistrar site.



# Academic Programs



## DISTANCE EDUCATION

Colby-Sawyer offers online and hybrid courses, as well as R.N. to B.S. and R.R.T. to B.S. online programs. Students are able to take 100% online full credit courses that apply to their program of study. Online courses allow students flexible access to high quality, credit-bearing courses.

Students in online courses interact with faculty and collaborate with fellow students to meet course objectives through weekly online discussions and submission of assignments. Online courses are equivalent in rigor/outcomes to traditional courses.

Online programs and courses ensure access to a high quality and progressive curriculum through Moodle, the college's learning management system. Online students are subject to the same policies and processes as traditional students, unless specifically stated otherwise.

# Access Resources

Access Resources encourages independence and self-advocacy while providing students equal access to the curriculum, services and activities available at Colby-Sawyer College in accordance with the Americans with Disabilities Act and Section 504 of the Rehabilitation Act.

Access Resources collaborates with students, staff and faculty to create a welcoming environment and implement reasonable accommodations to ensure that all students benefit from available opportunities.

Access Resources serves students with learning disabilities, mental health challenges, physical or psychological disabilities, and temporary medical impairments (concussions, fractures), as well as second language learners of English.

Access Resources provides weekly meetings with a learning specialist, strategies and skills sessions for effective learning, testing accommodations, classroom accommodations and housing and parking accommodations.

Access Resources is located on the second floor of Susan Colgate Cleveland Library/Learning Center.

For more information:

Rebecca Reeve

603.526.3713

[accessresources@colby-sawyer.edu](mailto:accessresources@colby-sawyer.edu)

[colby-sawyer.edu/access-resources](http://colby-sawyer.edu/access-resources)





## THE DAN AND KATHLEEN HOGAN SPORTS CENTER

The Hogan Sports Center is fully equipped for athletic programs, student recreation and community fitness.

The 63,000-square-foot building contains a multi-purpose fieldhouse with a suspended running/walking track, a six-lane swimming pool, locker rooms, an aerobics studio, the Elizabeth Kind Van Cise Fitness Center, athletic department offices, a conference room, the sports medicine clinic and racquet sports courts.

## RAY CLIMBING WALL

The indoor climbing wall, located in Mercer Hall, is 29 feet tall and 20 feet wide. It has approximately 722 square feet of textured artificial rock climbing with routes set up for all skill levels and can accommodate up to three climbers at a time.

## INTRAMURAL SPORTS

3 on 3 Basketball (M,W)  
Badminton  
Battleship  
Floor Hockey (M,W)  
Indoor Soccer (coed)  
Pickleball (coed)  
Pinewood  
Racquetball (coed)  
Snowshoeing  
Volleyball (coed)

## CLUB SPORTS

Cheerleading (coed)  
Golf (coed)  
Ice Hockey (M,W)  
Outing Club (coed)  
Rugby (M)  
Softball (W)

## VARSITY SPORTS

Alpine Ski Racing (M,W)  
Baseball (M)  
Basketball (M,W)  
Cross Country (M,W)  
Equestrian Team (coed)  
Field Hockey (W)  
Lacrosse (W)  
Rugby (W)  
Soccer (M,W)  
Swimming & Diving (M,W)  
Tennis (M,W)  
Track & Field (M,W)  
Volleyball (M,W)

For more information:

603.526.3000

[athletics@colby-sawyer.edu](mailto:athletics@colby-sawyer.edu)

[colby-sawyerathletics.com](http://colby-sawyerathletics.com)



# Baird Health & Counseling Center

**Staffed by healthcare professionals Monday through Friday, 9 a.m. – 3 p.m., the Baird Health & Counseling Center is committed to the physical well-being, emotional fortitude and success of all full-time, matriculated students.**

## SERVICES INCLUDE:

- ▶ Individual, couples and group counseling
- ▶ Collaboration with home providers
- ▶ Holistic health education
- ▶ Evaluation and treatment of illness and injury
- ▶ Individual counseling
- ▶ Immunizations
- ▶ Referrals
- ▶ Stress management
- ▶ Women's exams and contraceptive services

## OTHER AREA HEALTH CARE RESOURCES:

For more information:  
603.526.3621  
[colby-sawyer.edu/baird-health](http://colby-sawyer.edu/baird-health)  
[bhcc@colby-sawyer.edu](mailto:bhcc@colby-sawyer.edu)

New London Hospital  
273 County Road  
New London, N.H. 03257  
603.526.2911

Dartmouth-Hitchcock Medical Center (DHMC)  
1 Medical Center Drive  
Lebanon, N.H. 03766  
603.650.5000

Colonial Pharmacy\*  
82 Newport Road  
New London, N.H. 03257  
603.526.2233

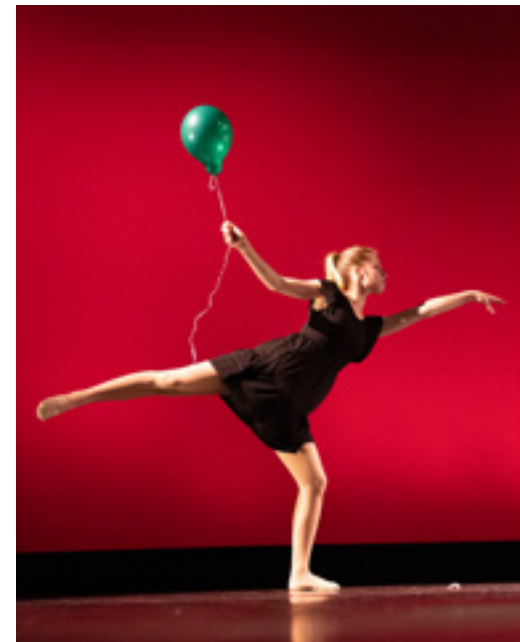
Robert Scarlett Pharmacy\*  
276 Newport Road  
New London, N.H. 03257  
603.526.4716

\*Pharmacies deliver directly to Baird Health & Counseling Center for student pick-up during normal hours of operation, provided the student has made arrangements for payment.

# Clubs & Organizations

Alpha Chi  
Anime Club  
Athletic Training Club  
Biology Club  
Black Community Club  
Campus Activities Board  
Child Development Club  
Community Service Club  
Cross Cultural Club  
Cru Christian Club  
CSC Players  
CSC Dance Club  
EMS (Emergency Medical Services) Club  
Exercise and Sport Science Club  
Feed the Freezer  
GOAT (Guild of Artistic Thinkers)  
Hispanic-Latino Club  
Planned Parenthood Generation Action  
PRIDE  
Psychology Club  
Public Health Club  
Rythmatic  
Student Government Association  
Student Nurses Association  
Sustainability Core  
Word Order  
Yearbook

For more information:  
603.526.3741  
[amanda.moak@colby-sawyer.edu](mailto:amanda.moak@colby-sawyer.edu)  
[colby-sawyer.edu/student-activities](http://colby-sawyer.edu/student-activities)



## DINING SERVICES HOURS

### Ware Dining Hall\*

Monday through Thursday • 7 a.m. – 7:30 p.m.

Friday • 7 a.m. – 7 p.m.

Saturday and Sunday • 8:30 a.m. – 7 p.m.

### Lethbridge Lodge Food & Espresso

Monday through Friday • 11 a.m. – 3 p.m., 5 – 11 p.m.

Ready 4U • 11 a.m. – 2 p.m.

Saturday • closed

Sunday • 5 – 11 p.m.

### Galligan's Pub at Lethbridge Lodge\*\*

Tuesday through Friday • 4 – 11 p.m. and events

*\*Please contact the dining services manager with any food allergy needs or dietary restrictions, concerns or questions.*

*\*\*In addition to the pub menu, beer and wine service is available to those 21+, Tuesday through Friday.*

---

For more information:

603.526.3989

[kirsten.perry@colby-sawyer.edu](mailto:kirsten.perry@colby-sawyer.edu)

[colby-sawyer.edu/dining](http://colby-sawyer.edu/dining)



## THE FINANCIAL AID OFFICE CAN HELP ANSWER QUESTIONS ABOUT:

- ▶ FAFSA
- ▶ Financial aid offer
- ▶ Payment options
- ▶ College loan process
- ▶ Verification process
- ▶ General financial aid guidance

For additional assistance, visit [colby-sawyer.edu/financial-aid](http://colby-sawyer.edu/financial-aid) or [Studentaid.gov](http://Studentaid.gov)

## HELPFUL FAFSA & LOAN TIPS:

- ▶ Complete FAFSA online after October 1
- ▶ Use Colby-Sawyer code 002572
- ▶ Use IRS Data Retrieval Tool, if possible
- ▶ Federal parent loan information at [studentaid.gov](http://studentaid.gov)
- ▶ Private student and parent loan information at [elmselect.com](http://elmselect.com)

---

For more information:

p: 603.526.3717 or 800.272.1015

f: 603.526.3737

[cscfinaid@colby-sawyer.edu](mailto:cscfinaid@colby-sawyer.edu)

[colby-sawyer.edu/financial-aid](http://colby-sawyer.edu/financial-aid)

The Financial Aid Office is located on the first floor of Colgate Hall.





# Financial Services

The Financial Services Office is located on the first floor of Colgate Hall.

## TUITION INVOICES

Fall semester tuition invoices are posted online in the student portal. Email notifications are sent to students/parents when invoices are available online. Students may invite an authorized payer to view and pay. Instructions are emailed to students and are available at [colby-sawyer.edu/financial-services](http://colby-sawyer.edu/financial-services).

## IMPORTANT BILLING DATES

- ▶ Fall incoming and transfer student payments are due by July 15. The enrollment deposit does not reduce tuition payments and is refundable after Commencement.
- ▶ Fall returning student payments are due by August 15
- ▶ Spring semester payments are due by December 15

## PAYMENT OPTIONS

- ▶ Online at [colby-sawyer.edu/tuition-payment](http://colby-sawyer.edu/tuition-payment) using credit card/debit card (MasterCard, Visa, Discover or American Express) or electronic check
- ▶ Mail checks to Colby-Sawyer College, Attn: Financial Services, 541 Main Street, New London, N.H. 03257
- ▶ Wire transfer – please contact the Financial Services Office for wiring instructions
- ▶ Payment plan through Nelnet
- ▶ An approved parent PLUS or private loan

For more information:

p: 603.526.3744

f: 603.526.3614

[billing@colby-sawyer.edu](mailto:billing@colby-sawyer.edu)

[colby-sawyer.edu/financial-services](http://colby-sawyer.edu/financial-services)

# Harrington Center for Experiential Learning

The Harrington Center for Experiential Learning is an integrated professional development collaborative that provides students with career development and advising opportunities and works to communicate the skills necessary to find internships and career prospects.

These services are designed to encourage intentional decision making; develop professional skills; promote lifelong learning; and teach global citizenship through experiential learning, self-understanding and personal reflection.

For more information:

603.526.3766

[harringtoncenter@colby-sawyer.edu](mailto:harringtoncenter@colby-sawyer.edu)

[colby-sawyer.edu/harrington-center](http://colby-sawyer.edu/harrington-center)

The center is located on the second floor of Colgate Hall in rooms 236/231 and is open Monday through Friday from 8 a.m. to 5 p.m.



# Important Phone Numbers

<b>Access Resources</b> 603.526.3713	<b>Library</b> 603.526.3685
<b>Admissions</b> 603.526.3700	<b>Registrar</b> 603.526.3407
<b>Athletics</b> 603.526.3610	<b>Residential Education</b> 603.526.3758
<b>Baird Health &amp; Counseling Center</b> 603.526.3621	<b>Student Activities</b> 603.526.3741
<b>Campus Safety</b> 603.526.3675	<b>Student Development</b> 603.526.3758
<b>Financial Aid</b> 603.526.3717	<b>Student Learning Collaborative</b> 603.526.3714
<b>Financial Services</b> 603.526.3744	<b>Student Success &amp; Retention</b> 603.526.3179
<b>Harrington Center for Experiential Learning</b> 603.526.3766	<b>The Stable (campus store)</b> 603.526.1870
<b>Helpdesk (for technology issues)</b> 603.526.3800	

# Local Businesses & Attractions

New London is home to many restaurants and shops that are accessible by bike, foot or car.

## RESTAURANTS

<b>Blue Loon Bakery</b> 12 Lovering Lane	<b>Grounds Coffee Shop</b> 374 Main Street
<b>China City</b> 276 Newport Road	<b>Jake’s Market &amp; Deli</b> 220 Newport Road
<b>The Elms Restaurant &amp; Bar at New London Inn</b> 353 Main Street	<b>Little Brother Burger Company</b> 420 Main Street
<b>Dunkin’ Donuts</b> 217 Main Street	<b>Millstone at 74 Main</b> 74 Newport Road
<b>Flying Goose Brewpub &amp; Four Corners Grille</b> 40 Andover Road	<b>The Oak Room at Pleasant Lake</b> 853 Pleasant Street
<b>Galligan’s Pub at Lethbridge Lodge</b> Colby-Sawyer campus <i>Open exclusively to members of the college community and their guests</i>	<b>Peter Christian’s Tavern</b> 195 Main Street
<b>Henry’s</b> Lake Sunapee Country Club 289 Country Club Lane	<b>Pizza Chef</b> 394 Main Street
	<b>Subway</b> 384 Main Street
	<b>Tucker’s</b> 207 Main Street



## Local Businesses & Attractions



### AREA RECREATION

**Country Club of New Hampshire**  
178 Kearsarge Valley Road  
North Sutton, N.H. 03260

**Lake Sunapee Country Club**  
289 Country Club Lane  
New London, N.H. 03257

**Mount Sunapee Ski Resort  
and Adventure Park**  
1398 Route 103  
Newbury, N.H. 03255

**Pat's Peak Ski Resort**  
686 Flanders Road  
Henniker, N.H. 03242

**Ragged Mountain Ski Resort**  
620 Ragged Mountain Road  
Danbury, N.H. 03230

Visit [lakesunapeeregionchamber.com](https://lakesunapeeregionchamber.com)  
for more area attractions and events.

## Local Businesses & Attractions

### NEW LONDON SPECIALTY SHOPS

**Allioops! Flowers and Gifts**  
394 Main Street

**Artisan's Fine Jewelry and Gifts**  
11 Pleasant Street

**Colonial Pharmacy**  
82 Newport Road

**Concord Food Co-op**  
52 Newport Road

**Flash Photo**  
New London Shopping Center  
247 Newport Road

**Go Lightly Consignment Boutique**  
New London Shopping Center  
255 Newport Road

**Hannaford Supermarket**  
New London Shopping Center  
95 Newport Road

**Hubert's Family Outfitters**  
219 County Road

**Morgan Hill Bookstore**  
253 Main Street

**Roberts Scarlett Pharmacy**  
276 Newport Road

**Rocky's Ace Hardware**  
New London Shopping Center  
257 Newport Road

**Spring Ledge Farm**  
37 Main Street

**Switchback Consignment**  
428 Main Street

**Unleashed**  
New London Shopping Center  
277 Newport Road

# Lodging

## **Bluebird Sunapee \$\$\$**

1403 New Hampshire Rte 103  
Newbury, NH 03255  
603.763.2010

## **Dexter's Inn \$\$\$**

258 Stagecoach Road  
Sunapee, N.H.  
603.763.5571

## **The Edgewood Inn \$\$\$\$**

195 Main Street  
New London, N.H.  
603.526.2964

## **Follansbee Inn on Kezar Lake \$\$**

Keyser Street  
North Sutton, N.H.  
603.927.4221

## **Inn at Pleasant Lake \$\$\$\$**

853 Pleasant Street  
New London, N.H.  
603.873.4833

## **Lake Inn at Mount Sunapee \$\$**

1349 NH-103  
Newbury, N.H.  
603.763.2701

## **Lamplighter Motor Inn \$**

34 Newport Road  
New London, N.H.  
603.526.6484

## **Mountain Edge Resort & Spa \$\$\$\$**

1380 NH-103,  
Newbury, N.H.  
603.763.4600

## **New London Inn \$\$\$**

353 Main Street  
New London, N.H.  
603.526.2791

*10% off for college visitors  
with the code CSC20*

## **Sunapee Lake Lodge \$\$**

1403 NH-103  
Newbury, N.H.  
603.763.2010

## **Sunapee View Bed & Breakfast \$\$\$**

348 Route 103A  
Newbury, N.H.  
603.763.4212

Visit [lakesunapeeregionchamber.com](http://lakesunapeeregionchamber.com)  
for more lodging options.

# Mail

**When sending mail or packages to students,  
the mailing address is:**

## **Student Name**

**541 Main Street**

**CSCXXXX (X = student's box # after CSC)**

**New London, N.H. 03257**

Please do not write "Box or P.O. Box." This additional  
information may cause mail to be delivered to a box  
holder at the New London Post Office.

Students can receive mail and packages through the  
U.S. Postal Service, UPS, FedEx, FedEx Ground, FedEx  
Home and DHL. Drivers are not able to enter residence  
halls and all packages are delivered to the mailroom  
for pick-up. Students are responsible for bringing their  
own packages back to their residence hall.

For more information:

603.526.3711

[mailroom@colby-sawyer.edu](mailto:mailroom@colby-sawyer.edu)





## Residential Education



**At Colby-Sawyer, all students live on campus in residence halls or college houses. The Residential Education staff has three main goals:**

1. To get to know students and help connect them with the right college resources to overcome their obstacles and reach their goals.
2. To work with students to develop residential communities that are based on individual responsibility and respect for others.
3. To provide opportunities for student learning outside the classroom that contribute to the college's learning outcomes.

Students are encouraged to visit the "Resources" section of the college's Residential Life web pages for more information about Colby-Sawyer's residency requirement, services and policies, opening and closing dates, and housing during college break periods.

Renter's insurance is strongly recommended for students living in residence halls, which will cover damage to students' belongings in the case of flood, fire, or other accidents. There are many providers available — two have requested their information be shared: [GradGuard.com/learnmore](http://GradGuard.com/learnmore) and [worthavegroup.com/product/college-student-insurance](http://worthavegroup.com/product/college-student-insurance).

For more information:  
603.526.3758  
[residential@colby-sawyer.edu](mailto:residential@colby-sawyer.edu)  
[colby-sawyer.edu/residential-life](http://colby-sawyer.edu/residential-life)

## Student Activities

**The Student Activities Office provides diverse co-curricular opportunities to help students explore their passions, find social outlets, develop leadership skills and have fun. Student Activities staff work with faculty and staff to engage students in a variety of events and activities that entertain, challenge and inspire.**

### **Campus Activities Board**

The Campus Activities Board is a student-led organization providing entertainment and educational programs to Colby-Sawyer and the community.

### **Emerging Leaders Program**

The Emerging Leaders Program encourages student leadership and learning through workshops on personal development, team building, leadership skills and community development.

### **Mountain Day**

An annual tradition since the 1850s, students, faculty and staff celebrate the new academic year by climbing nearby Mount Kearsarge.

### **Game Room**

Located in the Sawyer Center and managed by the Student Government Association, the game room features billiards, air hockey, games and a social gathering space.

---

For more information:  
603.526.3741  
[amanda.moak@colby-sawyer.edu](mailto:amanda.moak@colby-sawyer.edu)  
[colby-sawyer.edu/student-activities](http://colby-sawyer.edu/student-activities)



# Student Learning Collaborative

The Student Learning Collaborative (SLC) offers educational support to all Colby-Sawyer students. SLC staff empower students to find ownership and purpose in their learning experiences. Our student-centered services enhance the academic abilities and confidence of our diverse community of learners.

## SERVICES INCLUDE:

- ▶ Writing Consultations: Students can meet with a tutor at any stage in the writing process, from brainstorming to editing.
- ▶ Course Content Tutoring: Courses for the Liberal Education Core Curriculum and select upper-level courses are covered by SLC tutors. Tutors are available to discuss course concepts, review for exams, or to develop study strategies targeted to a particular class.
- ▶ Group Learning Instruction: Group Learning Instructors are assigned to select gateway classes. These peer educators provide regularly-scheduled group study sessions wherein the students work with and learn from each other.
- ▶ Study Skills Consultations: Students can meet with SLC staff to discuss strategies for time management, effective reading, note taking, organization and test preparation.

---

For more information:  
Krystal Smith  
603.526.3367  
[learning@colby-sawyer.edu](mailto:learning@colby-sawyer.edu)  
[colby-sawyer.edu/learning-collaborative](http://colby-sawyer.edu/learning-collaborative)

The SLC is located on the second floor of the Susan Colgate Cleveland Library/Learning Center and is open Monday through Thursday from 10 a.m. to 10 p.m., Friday 10 a.m. to 4 p.m., and Sunday from 6 to 10 p.m. Students can schedule an appointment at [learning@colby-sawyer.edu](mailto:learning@colby-sawyer.edu).

# Student Success and Retention

The Office of Student Success and Retention helps students identify obstacles and connects them to appropriate resources on campus. The office works with other departments to support students' healthy development through all four years and provides early intervention for students who encounter challenges. Particular attention is paid to the first-year students' social, emotional and academic transition to college.

Student Success and Retention employs upper class students as Peer Mentors, matching mentors with First Year Experience classes and arranging one-on-one matches for first-year students, if they choose. The office also guides students who need to leave or want to return to the college.

Student Success and Retention is located in the Ware Student Center.

---

For more information:  
603.526.3179  
[ewebb@colby-sawyer.edu](mailto:ewebb@colby-sawyer.edu)  
[colby-sawyer.edu/student-success](http://colby-sawyer.edu/student-success)



## Citizenship Education



**Citizenship Education's role is to work with students who, for one reason or another, have been referred to our office due to alleged student conduct concerns. The student conduct process and policies are designed to be educational in nature.**

Our office hosts various programming initiatives designed to help support students as they navigate through their college experience. We also encourage personal development and responsibility, while ensuring a culture of accountability on campus by overseeing the formal conduct process. Life on campus can sometimes be confusing, especially for students who are unfamiliar with the Code of Community Responsibility and other college policies. We are here to help!

While on average relatively few students are ever referred to our office, there are times that it does happen. We encourage you to reach out at any time to speak to us with any questions or concerns you might have.

---

For more information:

**Cally White**

Director of Citizenship Education

603.526.3896

[citizenship@colby-sawyer.edu](mailto:citizenship@colby-sawyer.edu)

## Transportation



**Colby-Sawyer College offers limited, complimentary student transportation assistance upon advance request via email to the Student Development Program Manager, Jen Schad ([jen.schad@colby-sawyer.edu](mailto:jen.schad@colby-sawyer.edu)).** Colby-Sawyer offers rides to off-campus appointments, shopping, Dartmouth Coach bus stop and Mount Sunapee. Certified student drivers are available between the hours of 8 A.M. and 10 P.M., but we cannot guarantee all students transportation assistance off-campus, as our few certified college vehicle drivers have limited availability.

Local transportation services become fully-booked around the holidays and school breaks. Please plan ahead well in advance of school breaks. If Colby-Sawyer student transportation assistance is unavailable, students must organize their own transportation through a friend or a transportation service such as Best Transportation/ Best Taxi, LLC and Lakes Region Airport Shuttle.

---

Dartmouth Coach information is available at [dartmouthcoach.com](http://dartmouthcoach.com) (800.637.0123) or [info@dartmouthcoach.com](mailto:info@dartmouthcoach.com). Tickets must be purchased online.

---

Best Transportation (Best Taxi) LLC 603.448.4004 or 603.543.7139. <https://www.bestuvride.com>

---

Lakes Region Airport Shuttle  
[lairportshuttle.com](http://lairportshuttle.com) (888.386.8181)

