

Papillion La Vista Community Schools  
420 S. Washington Street  
Papillion, NE 68046

Non-Profit Org.  
U.S. Postage  
PAID  
Omaha, NE  
Permit No. 23



PAPILLION LA VISTA  
COMMUNITY SCHOOLS

## Annual Report 2020-2021

### The Year of COVID-19

### Be in the Know... Stay Connected

#### Would you like to receive updates from PLCS?

Register today to receive emails with updates on student achievement, bond issue progress, finances, student and staff highlights and so much more. Send an email to [Communications@plcschools.org](mailto:Communications@plcschools.org)

#### Check us Out:

 [www.plcschools.org](http://www.plcschools.org)

 [www.facebook.com/PapillionLaVistaCommunitySchools](https://www.facebook.com/PapillionLaVistaCommunitySchools)

 [www.instagram.com/plcschools](https://www.instagram.com/plcschools)

 [www.twitter.com/plcschools](https://www.twitter.com/plcschools)

 [www.youtube.com/plcschools](https://www.youtube.com/plcschools)

#### There's an app for that!

The PLCS app is available for FREE on iPhone and Android devices.

To download the free app:

1. Open the app store on your phone.
2. Search for Papillion La Vista.
3. Click install. The app should begin downloading.

*Blackberry and Windows phone users can access the app via a mobile site. Simply go to your mobile browser and enter: [paplv.parentlink.net/m](http://paplv.parentlink.net/m)*

*This annual report is provided as a quick snapshot of school through the COVID-19 pandemic. It has been produced by the Communications Department. For more detailed information, check out the District website at [www.plcschools.org](http://www.plcschools.org) or contact the Central Office at 402-537-6200 or email the District at [communications@plcschools.org](mailto:communications@plcschools.org).*

*The Papillion La Vista Community Schools does not discriminate on the basis of race, color, national origin, sex, disability, religion, age or other protected status in its programs and activities and provides equal access to the Boy Scouts and other designated youth groups. The following persons have been designated to handle inquiries regarding the non-discrimination policies: Students: Dr. Trent Steele, Director of Secondary Human Resources and Student Services, 420 South Washington Street, Papillion, NE 68046 (402) 537-6214 ([trent.steele@plcschools.org](mailto:trent.steele@plcschools.org)). Employees and Others: Dr. Kati Settles, Assistant Superintendent Human Resources, 420 South Washington Street, Papillion, NE 68046 (402) 537-6206 ([kati.settles@plcschools.org](mailto:kati.settles@plcschools.org)). Complaints or concerns involving discrimination or needs for accommodation or access should be addressed to the appropriate Coordinator. For further information about anti-discrimination laws and regulations, or to file a complaint of discrimination with the Office for Civil Rights in the U.S. Department of Education (OCR), please contact OCR at One Petticoat Lane, 1010 Walnut Street #320, Kansas City, Missouri 64106, (816) 268-0550 (voice), or (877) 521-2172 (telecommunications device for the deaf), or [ocr.kansascity@ed.gov](mailto:ocr.kansascity@ed.gov).*



**Greatness Happens Together**



# 2020-21 Annual Report: The Year of the Pandemic

The 2020-21 Annual Report has been expanded to include March of 2020 to July of 2021 to reflect the unique challenges and changes PLCS faced during the COVID-19 pandemic. Each section reflects the historical events that occurred due to COVID-19. It includes a chronological report of the direct health measures (DHM) and a documentation of how PLCS managed the various milestones of education during this time of a pandemic.



## Strategic Plan Put on Hold for Pandemic

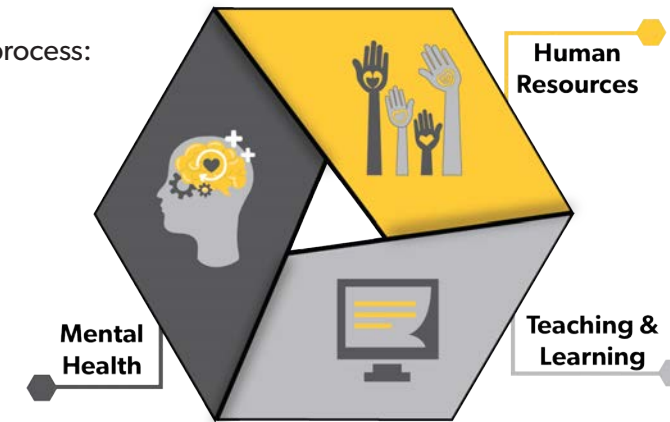
### Staff and Community Set Plans for PLCS Future

In February 2020, just prior to COVID-19 hitting, PLCS engaged in a new strategic planning process. Nearly 30 staff, community leaders, parents and students came together for a three day planning session to discuss the future direction of PLCS.

Then COVID-19 hit and the strategic plan efforts turned to a focus on managing operations and keeping school running during a pandemic. As PLCS begins to return to normal, the strategic plan strategies will once again become a focus and action steps to meet each strategy will be determined. Once the steps are finished, the Board of Education will take action on the complete strategic plan.

New Strategies/Focus Areas developed through the Strategic Plan process:

- **Teaching & Learning:** All students will be guaranteed a rigorous core curriculum that honors diversity, maximizes innovative instruction, provides levels of individualized support and results in demonstrated growth.
- **Mental Health:** Each student will have the opportunity to learn and refine the skills to achieve the mental, emotional, social and physical wellbeing necessary for a happy, healthy and productive lifestyle.
- **Human Resources:** Provide all students with highly qualified staff who will foster a positive environment based in relationships.



## Leading Through a Pandemic

### COVID-19 Has Changed Public Schools

The 2020-21 school year has been a year unlike any other. We are so proud of the efforts of our staff and students to keep school open and everyone safe. Throughout this report, you will see a historical record of the pandemic that has changed our school district over the past 17 months.

A strong community has always been the foundation for our great school district. This has proven to be so true during this pandemic. We value your input and promise to always do our best to keep you informed on the progress of our students and staff. We know the last 17 months have been a challenge for everyone. We may not have always gotten it 100% right, but we have done our very best to keep our students and staff at the forefront of every decision. We hope you find this report informative. Thank you for your support and all you do to make this an outstanding school district and community. We look forward to a great 2021-22 school year and many more years of success to come!

*Andrew Rikli*



## Board of Education

### Board Meetings Go Live on Facebook - Participation Reaches an All-Time High

When the pandemic hit and schools were closed, school boards across the country were challenged to decide, "How do we do business?" PLCS decided that everyone in attendance would wear masks and social distance six feet apart. All meetings would be televised live on Facebook. At one point, as the Board was deciding return to school plans, over 800 viewers watched the meeting live in their own living room. In an effort to engage more of the community in Board meetings moving forward, the current plan is to continue the practice of Facebook Live. Board meetings are held the second and fourth Monday of each month at 6:00 p.m. at the PLCS Central Office. All meetings are also open to the public.



Superintendent Dr. Andy Rikli with the 2021 Board of Education officers and members. Back row (left to right): Dr. Andy Rikli, Superintendent; Dr. Fred Tafoya, Treasurer; Skip Bailey, Member; Marcus Madler, Member. Front row (left to right): Valerie Fisher, Secretary; Brian Lodes, President; SuAnn Witt, Vice President.

### New Mission - Developed through the Strategic Plan Process

The mission of Papillion La Vista Community Schools, an organization dedicated to greatness, is to prepare all students to realize their unique aspirations through rigorous instructional and innovative educational pathways, delivered by highly qualified, passionate educators through bold partnerships with families and community.

### New Beliefs - Developed through the Strategic Plan Process

#### We believe...

- ▶ In the worth of every individual.
- ▶ In building impactful relationships that foster empathy and kindness.
- ▶ In an inclusive environment that honors diversity, equity and access.
- ▶ All students can learn and grow.
- ▶ In high quality, rigorous foundational and innovative instruction.
- ▶ Supporting mental, emotional, social and physical well-being is the foundation for student success.
- ▶ In creating a culture of engaged students, staff, family and community.
- ▶ In the power of collaboration, communication and continuous improvement.
- ▶ Making data-informed decisions is in the best interest of all students.



# Spring 2020 **March 2020: Governor Closes Nebraska Schools for Remainder of the 2019-20 School Year**

As the coronavirus began to shut down Nebraska, on March 19, 2020, Governor Ricketts issued the order to close schools. PLCS, already closed for spring break, quickly worked to create a Remote Teaching and Learning Plan. With minimal prep time and concerns about overwhelming families during the unheard-of pandemic, initial virtual learning rollout started slow with online activities. Elementary students were asked to spend 20-30 minutes daily on each core area and electives. Middle and high school students had a total recommended 3.5-4 hours daily.

## First Time in History Education in PLCS Goes Totally Virtual



### Governor DHM

#### March & April 2020

- All schools cease in-person instruction and all extracurricular activities.
- All organized team sports suspended.
- Gatherings of 10+ people prohibited, including child care.
- 14-day quarantine for positive COVID-19 test.
- 6' social distancing.
- Restaurants restricted to carry-out, drive-thru or delivery.
- Businesses providing services in beauty, health clubs and theaters are ordered to close.

#### Seniors Were First Priority to Be Sure They Graduated!

The week of March 30, 2020, direct virtual instruction kicked off for seniors to finish course work and receive enough credits to graduate. Seniors without access to technology were given computers and hot spots. Upon return from spring break, teachers were challenged to rework their lessons to now teach virtually from home.

#### Goal: Don't Overwhelm Families, But Keep Students Learning

On April 13, 2020, a new virtual learning plan was shared with all K-11 students. Districtwide, teachers prepared weekly assignments, virtual lessons and "virtual office hours" to assist students. All schedules were flexible to allow families to make this new learning world work for them with minimal stress. Printed packets were also available for students without computer access.

Elementary students met virtually twice a week for 20-30 minutes with their teacher. Students were given one weekly assignment for reading, writing and math. Teachers provided feedback on assignments.

Middle and high school students received weekly assignments including recorded lessons (max. 50 minutes) for each core area and Spanish. The total weekly online time for each student was 4-5 hours. Middle school teachers provided feedback on assignments but did not grade. High school work was graded with a no harm approach.

**161**  
Laptops

**220**  
iPads

#### Devices Provided to Students as PLCS Goes Virtual

In the spring of 2020, 161 laptop computers were provided to seniors and over 220 iPads were provided for students in preschool through 11th grade. Hot spots were also provided to families that needed internet access.

### PLCS Feeds Students in Need

Every Monday from March 23, 2020, to August 3, 2020, parking lots filled with cars as families received a week's worth of grab and go breakfasts and lunches for each child.

PLCS served approximately

**23,500**

meals each week to families.



## PLCS Teachers Get Creative to Stay Connected with Students

After schools were closed in the spring, staff members at elementary schools wanted to see their students and families. Staff members decorated their cars and drove around the school neighborhoods to show the students and families how much they missed them. The parades were meaningful events and helped staff, parents and students feel connected while being apart due to the pandemic.



*"Until the thresholds in the [state-directed closure] guidance are met, school districts will continue to manage their operations based on the best information they have."  
- Governor Pete Ricketts*





# Graduation 2020



# 1st Virtual Graduation & Honors Night

"Although this isn't what most of us pictured graduating from high school would look like, it is still time to congratulate all of us on the tests we took, all nighters we pulled, classes we passed and homework completed."  
- Ryleigh Parrack, PLSHS 2020 Graduate



PLSHS 2020 graduate Ryleigh Parrack addresses the graduating class during the virtual graduation ceremony.

## Graduation Events

### Virtual Honors Night

Friday, May 8, 2020

### Senior Celebration Firework Show

Saturday, May 9, 2020

### Virtual Graduation

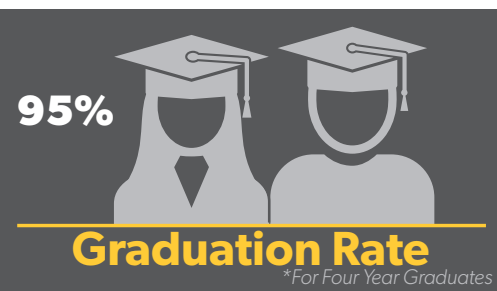
Sunday, May 10, 2020

### Optional In-Person Graduation

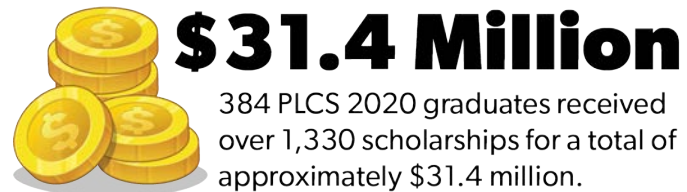
Sunday, August 2, 2020



PLHS 2020 graduate and senior class president Tarynn LiaBraaten addresses the graduating class during the virtual honors night.



Note: The most recent state data available for graduation rate is from 2019-20. To review the complete State of the Schools Report visit: <http://nep.education.ne.gov/>



## Where Do PLCS Graduates Go?



# Summer 2020

Schools begin to slowly open for summer... after three months of being totally closed!

## Elementary Summer School Stays Virtual but Intensity of Instruction Increases

After many lessons learned through the spontaneous spring Remote Learning Program, instruction intensity was increased for elementary summer school. Knowing that the three-month classroom absence would have a significant impact on learning loss for students, the Summer School Program, though still done virtually, was designed to provide students with very direct instruction. A small group approach of around six students helped each child get personal virtual attention needed from their assigned teacher and para. Summer school students also received weekly packets with activities and a few special surprises.

High schools conducted virtual credit recovery over the summer, while PE summer school was moved to the fall.



## Governor DHM

### June & July 2020

- Gatherings restricted to 25 people.
- Non-contact sports can slowly begin June 1st.
- Contact sports can begin July 1st.
- Sporting event spectators not limited to households when following other gathering restrictions.
- Child care limited to 15 children per room or space for non school-age children and 20 per room for school-age children.
- 10-day quarantine required with positive test results and 14 days if close contact with a positive person.
- Restaurants open at 50% capacity; patrons required to be seated.

## Athletes & Activity Students Allowed to Return to High School

After three months of no one in our schools, summer held a glimmer of hope for fall. Students and staff returned to the high schools with very strict COVID-19 protocols. Approximately 900 students slowly started participating in activities to prepare for upcoming sports and fine arts events. Band practiced outdoors and athletes participated in weight lifting and conditioning. To be extra careful, the following safety protocols were implemented:

- Masks required for all staff and recommended for all students.
- Groups limited to 25 consistent members, with recorded attendance and staggered start and stop times.
- Everyone had to complete a COVID-19 symptom checker.
- All equipment was cleaned between uses and high touch areas were cleaned frequently.
- 6' social distancing between individuals.
- Increased promotion of hygiene with hand sanitizer stations located throughout the school.

**900** Students participated in summer athletics and activities.



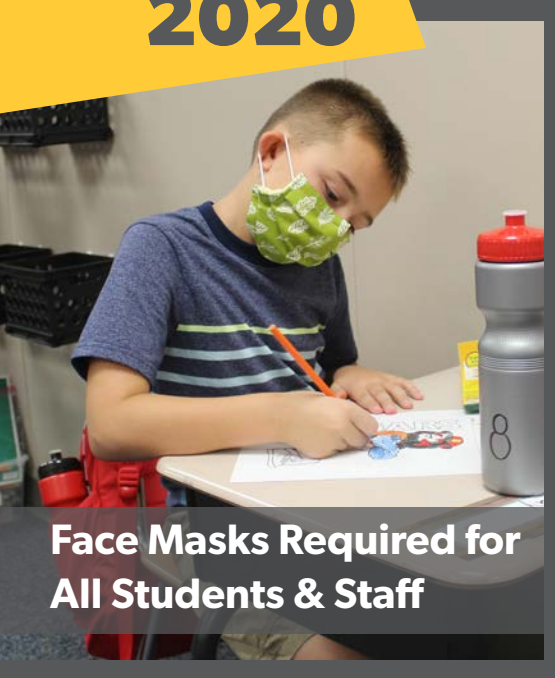
## PLCS Plans to Go 1:1 at Middle & High Schools

In preparation for school opening in the fall and uncertainty around if school would be virtual or in person, PLCS decided to go 1:1 with technology at the high school level. With support from Facebook **4,820** new devices were ordered in June 2020. In August of 2020, **2,000** additional devices were ordered to go 1:1 at the middle school level as well. Due to a world-wide demand for technology, the devices ordered did not arrive until summer of 2021.





**August  
2020**



**Face Masks Required for All Students & Staff**

# 100%

Return to School



# FIRST Day of SCHOOL

### Return to School Goals

Protect the physical and mental health of students and staff.

Provide students with quality education face to face.

Keep as many students in school for as long as possible.

## Governor DHM

- August 2020**
- Schools fully open.
  - Extracurricular activity spectators limited to households with 6' separation between parties.
  - 25% indoor capacity and 100% outdoor capacity at gatherings.
  - Child care staff required to wear masks when within 6' of children for 15 consecutive minutes or more.
  - Bars/restaurants limited to parties of 8 with 6' separation; patrons required to be seated.
  - Weddings and funerals limited to parties of 8 and dancing at weddings are limited to at the table only.

## A Step Towards Normalcy: Students & Staff Return to School

On June 22, 2020, PLCS announced schools would open full time for in-person learning for the fall of 2020-21. Uncertain of what would happen with the spread of COVID-19, many safety protocols were put in place including mask requirements for all students and staff at all times. Concerned about the unknown, some families requested a remote learning option. This request was granted and families had almost two weeks to decide if they wanted their children enrolled in remote or in-person learning for the first semester. Students were not allowed to move between remote and in-person and teachers were assigned either a remote or in-person classroom. Teachers were not required to teach both at the same time.



**August 11, 2021**



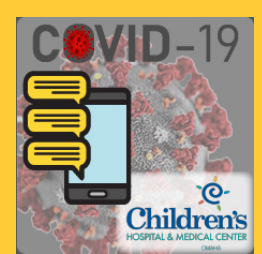
*"Our family was overjoyed to hear that school would be back for in-person learning! Of course there were challenges, but the District has met each one with staff and student safety and wellbeing as the top priority. Our children have thrived while being back in the classroom. We are so thankful for PLCS and their dedication to doing what is best for all students!"*

- Sarah Skaggs, Parent

## Separate teachers & classes designated for remote learning



Remote learning kindergarten students in Mrs. Stock's class celebrate Star Wars Day on May 4th with dressing up and activities.

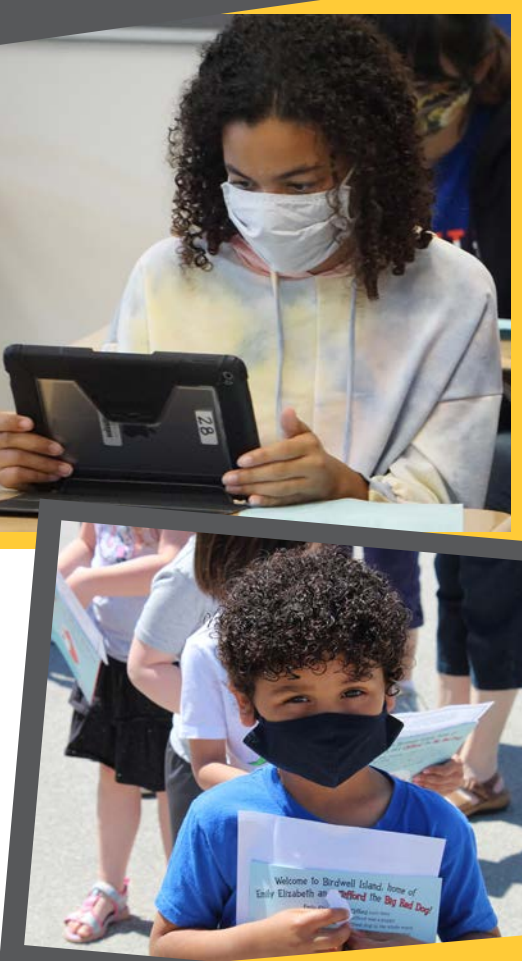


## PLCS partners with Children's Hospital & Medical Center to help families conduct daily screening for COVID-19.

Through a partnership with Children's Hospital & Medical Center, a COVID-19 symptom checker app was made available to all PLCS families and staff. The symptom checker gave staff and parents specific directions whether they should or should not attend school based on the symptoms they were having.



# Back to School



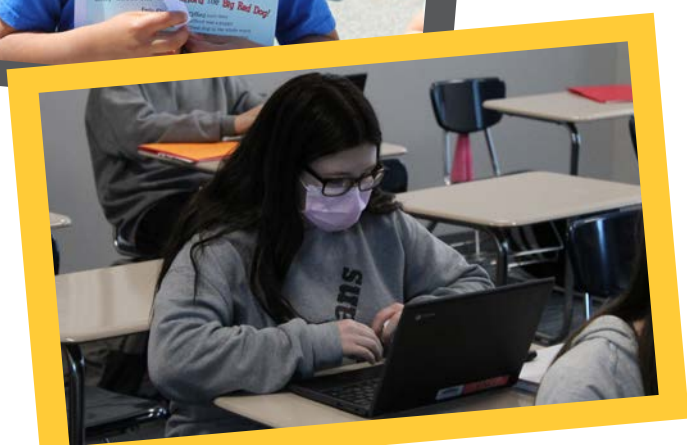
## Opened 100% with New COVID-19 Protocols

### In-Person Learning Safety Protocols

- Daily home screening for students and staff – stay home if sick.
- Masks required for students and staff.
- 6' social distancing.
- Limit large groups and capacity of large spaces.
- Routine hand washing and sanitizing.
- Enhanced cleaning throughout the day.
- Minimize student movement.
- Limit outside visitors.

## Remote Learning Students Had Same Expectations as In-Person Students

The Remote Learning Program for fall of 2020 was very different from that in the spring. Elementary students were assigned a classroom and attended school with their assigned teacher through Zoom. For middle and high school students were expected to virtually attend a full class schedule and complete all assignments, which were graded. Limited classes were available through the Remote Learning Program but the daily instruction looked very similar to a regular day.

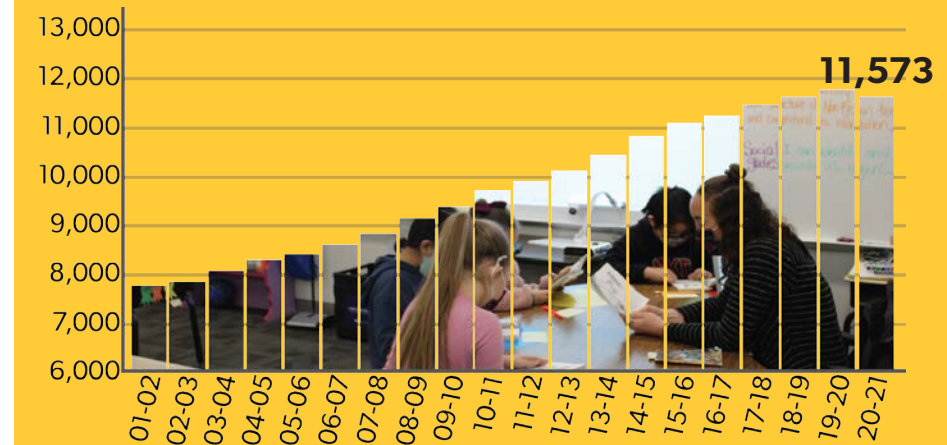


## Kindergarten Remote Learning class bringing art to life with a visitor from The Rose Theatre

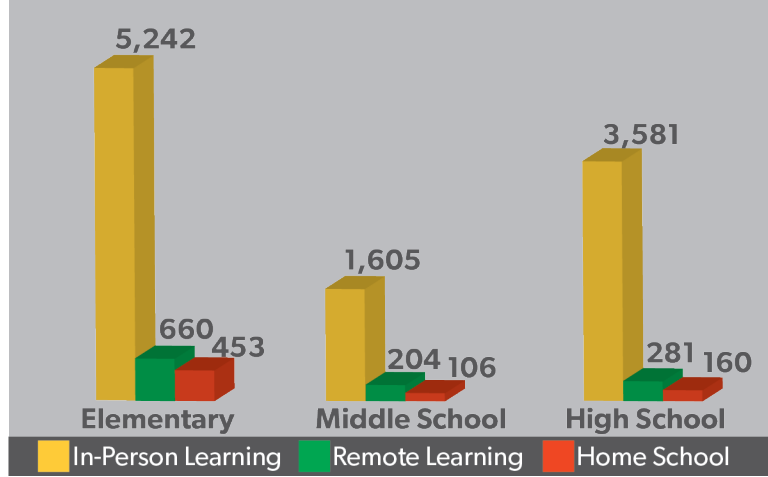


## Enrollment takes a slight dip as some parents decide to keep students home during the pandemic to home school.

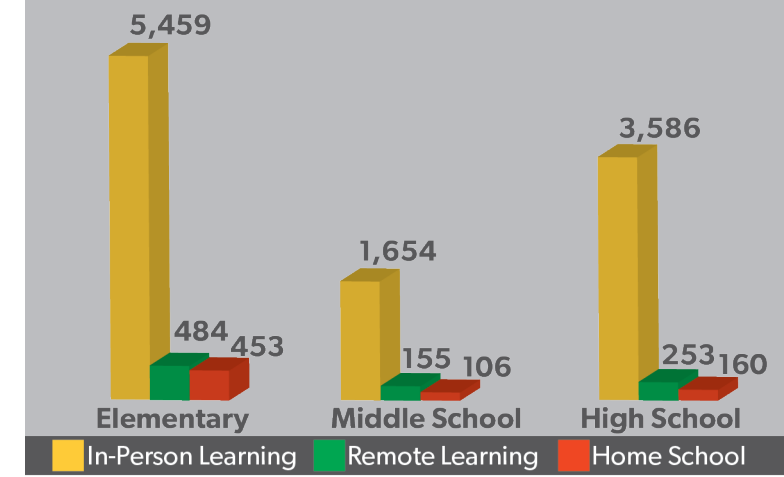
## Historical Student Enrollment



## 1st Semester Enrollment for 2020-21



## 2nd Semester Enrollment for 2020-21



- 9 Academy Programs** Give high school students hands-on experiences and education in a specific career.
- 17 AP Classes** Total of 17 Advanced Placement (AP) classes are offered at each high school.
- 25 Exploratory classes** Available for middle school students.
- 60 Kindergarten Jump Start** Total of 60 students participated in Jump Start in August 2020.
- 323 Preschool** Total of 323 students are in preschool for the 2020-21 school year.



"We know there are still many, many unknowns. As a colleague noted recently, we all better get used to saying, 'I'm sorry, we're doing the best that we can.' We are entering into uncharted waters, but when I look at the plans our community and staff have helped us develop and the Board has helped us review, I'm really proud of our plans and I'm excited to see what the upcoming school year brings."  
- Dr. Andy Rikli, PLCS Superintendent

## Students in PLCS are...



Note: This data reflects the 2020-21 school year.



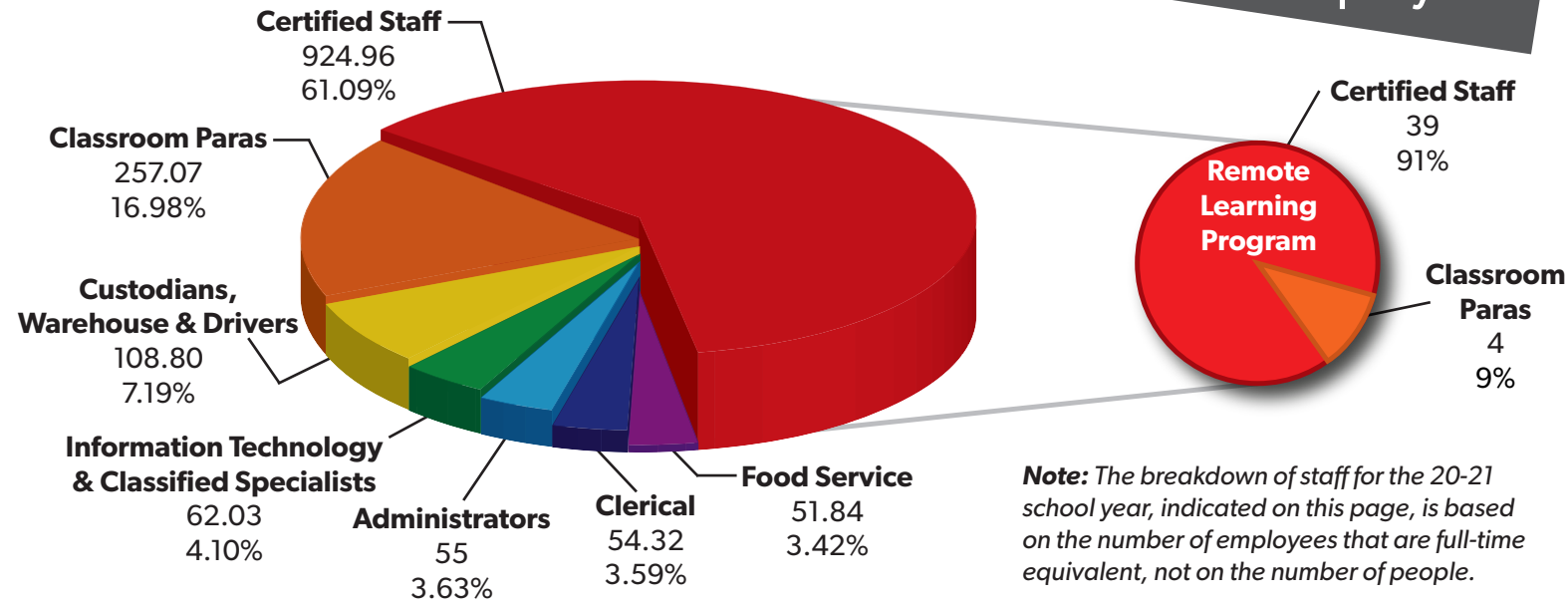


# Individuals Behind the Mask

# 1,689

PLCS Employees

## 2020-2021 Breakdown of Staff



**Note:** The breakdown of staff for the 20-21 school year, indicated on this page, is based on the number of employees that are full-time equivalent, not on the number of people.

## 2020 Greatness Award Winners

Every year, four PLCS employees are awarded the District's top prize for their work during the previous school year. The Greatness Awards are designed to recognize legendary staff members in four categories. A special thank you to the Papillion La Vista Schools Foundation for their support of these awards. For more information, visit: [www.plcschools.org/GreatnessWinners](http://www.plcschools.org/GreatnessWinners)



**Cory Clemenger**  
Secondary Teacher/Specialist of the Year



**Debbie Portofee**  
Classified Staff Member of the Year



**Cody Redford**  
Rookie Teacher the Year

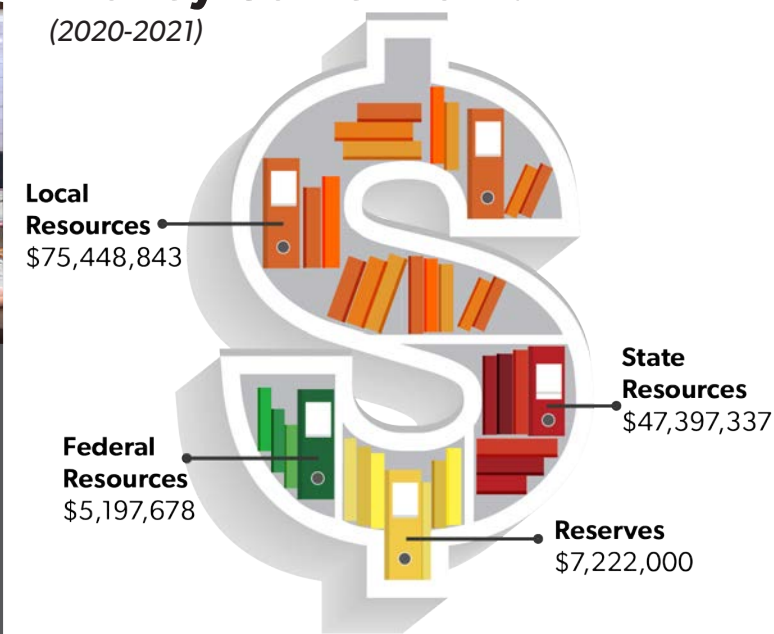


**Dawn Butterfield**  
Elementary Teacher/Specialist of the Year

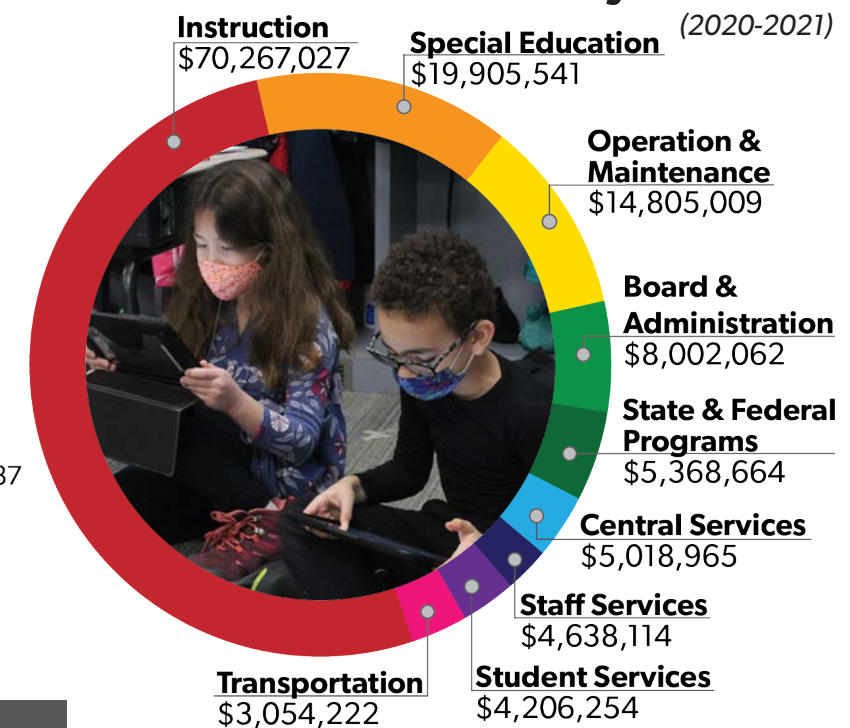
## 2020-2021 Budget Facts

The 2020-2021 budget numbers show an overall increase of 3.04%. The largest increases were in special education and instruction. Staff salaries and benefits consist of 86% of the total budget. With an increase in valuation, the Board of Education was able to keep the tax rate flat. PLCS moved from 6th-lowest to 5th-lowest in the state for per-pupil expenditure. PLCS continues its commitment to be fiscally responsible while providing excellence in education.

## Where Does the Money Come From? (2020-2021)



## Where Does the Money Go? (2020-2021)



## 2020-2021 Tax Facts

2020 Tax Rate		Tax levy/\$100 assessed value
General Fund	\$1.03341	<b>\$1.29063</b>
Building Fund	\$0.02509	
+ Bond Fund	\$0.23213	
	<b>\$1.29063</b>	
Total PLCS Tax Rate		Taxes/\$100,000 home
		<b>\$1,290.63</b>
		Total District assessed valuation
		<b>\$6,586,670,565</b>

## \$10,490 Per Pupil Expenditures

PLCS has the 5th-lowest per pupil expenditure in the state. That's \$2,693.54 less than the state average.

**Note:** the per pupil expenditure is based on the 18-19 school year, the most recent available statistic from the state.

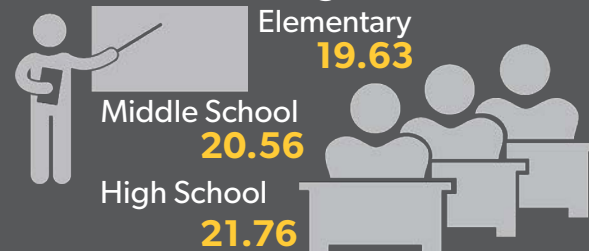


## Certified Staff Degrees

All certified teaching staff have a minimum of a bachelor's degree; many have acquired additional hours including...

- 642 master's degrees
- 17 educational specialist degrees
- 6 doctorates
- 4 national certificates

## 2020-2021 Average Class Sizes



## Teacher Longevity

The average teacher has been with PLCS for

**13.42 years**

"This year has been challenging for all of the stakeholders in our community, around the country and throughout the world. A guidebook to pandemic teaching was never created nor developed in our history before. A lot was asked of the administration and our teachers to create this new way of teaching and learning through masks, remote learning, social distancing and other protocols related to COVID-19."

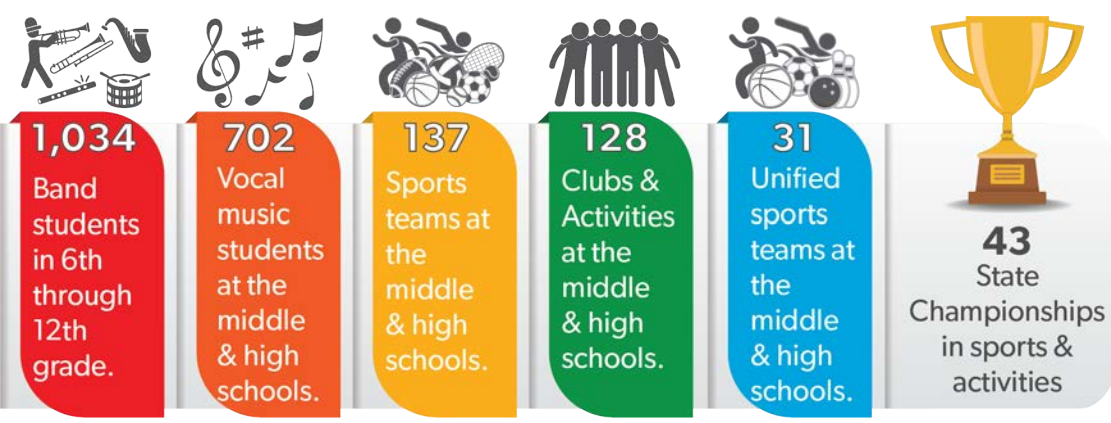
- Dave Herbener, PLHS Teacher & PLEA President





# Athletics & Activities

## Return with Limitations



Amid a global pandemic, a community comes together...



State Tennis Champion



**August 2020**

- Spectators limited to four per student participant
- Families must sit together with 6' between families
- Masks required for all spectators and participants
- Spectators must screen prior to entering events
- No student section

**November 2020**

- Spectators limited to two per student participant

**January 2021**

- Spectators increased to six for each participant
- Student section open with limited spots available

## Protocols for Athletics & Activities

**September 2020**

- Spectators increased to six per participant
- Student section opened to seniors

**December 2020**

- Music and Band performances allowed with limited spectators

**March 2021**

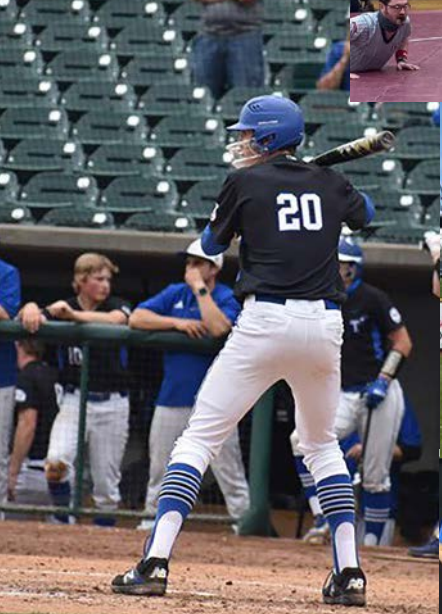
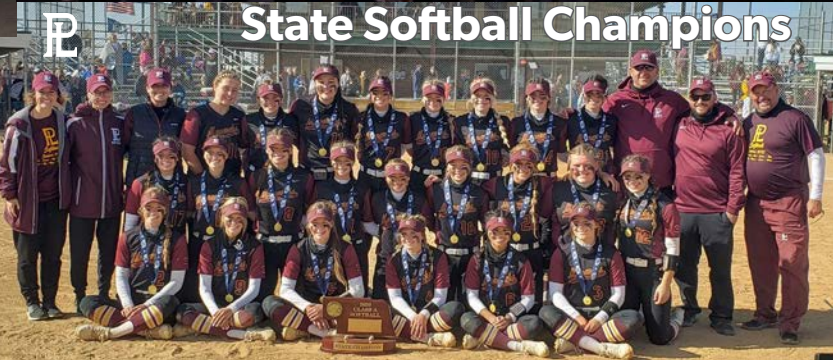
- Spectator limitations expired
- Masks and screen still required



State Journalism Champions



State Softball Champions



State Power Lifting Champions





# Academic Progress



## Governor DHM

December 2020 through February 2021

- Schools remain open.
- 75% indoor capacity for extracurricular activities.
- 75% capacity indoors.
- 100% capacity outdoors.
- No restrictions on bars, restaurants, churches, weddings, funerals, gyms, fitness centers, spas, salons, elective surgeries, child care services.

## PLCS Teachers Use MAP Data to Adjust Instruction

The MAP assessments are given to PLCS elementary students every fall, winter and spring. The purpose of MAP is to determine what the students know and are ready to learn next. Teachers use this data to modify their instruction for students. Where most assessments use paper and pencil, MAP is a computer adaptive test. The questions asked are automatically adjusted based on student responses. If students continue to answer questions correctly, the questions will get harder; if answers are incorrect, the questions will get easier. This is a true evaluation of the child's performance. For example, if a 3rd grade student is reading at a 5th grade level, MAP will clearly identify that. This MAP data provides PLCS with an accurate picture of how students are performing and, more importantly, if they are improving over time at an appropriate level.

Due to COVID-19, MAP could not be given in the spring of 2020 and the fall data was not consistently given to all students because of the number of students in remote learning. The chart below is data from the 2019-20 school year and shows the percentile rank of students on MAP in reading and math.

### How are PLCS students doing?

Grade Level	Reading	Math
1st Grade	94th percentile	75th percentile
2nd Grade	98th percentile	91st percentile
3rd Grade	80th percentile	70th percentile
4th Grade	83rd percentile	81st percentile
5th Grade	85th percentile	84th percentile
6th Grade	84th percentile	82nd percentile
7th Grade	80th percentile	77th percentile
8th Grade	87th percentile	88th percentile

A percentile is a comparison score. For example, if PLCS 1st graders are at the 94th percentile it means that PLCS 1st graders scored as well as or higher than 94% of other 1st grade students across the nation taking that same test.

## Bond Construction Continues During the Pandemic



Tuesday, May 15, 2018, represents a remarkable moment in PLCS history. Residents from PLCS voted overwhelmingly in support of a \$109.9 million bond. Not only was this the single biggest bond in PLCS history, but the margin of victory was also the largest. PLCS is in the middle of the timeline of construction projects and will continue to work hard to get all projects completed in 2023. For more information about each project and the timeline, visit [www.plcschools.org/BondIssue](http://www.plcschools.org/BondIssue).



### Completed Projects

#### 2018

Additional locks were added to five elementary schools.

#### 2020

- New elementary school, Ashbury, was completed and opened.
- Renovations and the addition to Anderson Grove were completed.

#### 2019

- Land was purchased for a possible third high school.
- The visitor parking lot at Foundation Field was added.

#### 2021

- Renovations and the additions at PLSHS and G. Stanley Hall are in the finishing stages.



New Classroom at G. Stanley Hall



Students across PLCS celebrated the 100th day of school on February 1, 2021.

## PLCS Exceeds State Average on ACT Tests

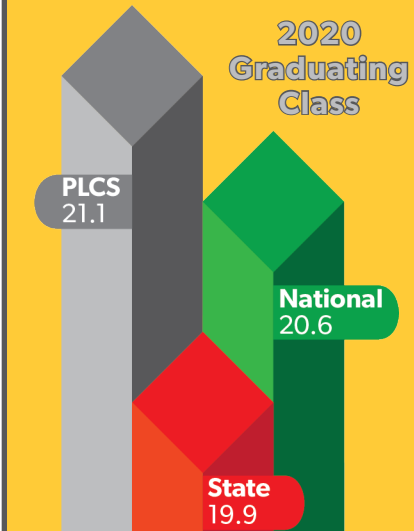
ACT is a national high school exam. Prior to 2017, the ACT was voluntary and taken only by those who wanted it for college entrance. In 2017 the Nebraska Department of Education decided the ACT test would be required for all 11th grade students to replace the former NeSA test. Even though many high school juniors have not completed the courses necessary to be successful on the ACT, offering the test for free for all juniors has the potential of opening many doors for students who may not have taken the test otherwise. Due to COVID-19 and the closure of schools in 2020, juniors were not able to take the ACT. To the right you will see the results from the seniors for 2020.

### Perfect ACT Score



Papillion La Vista High School senior Samuel Vu earned the top achievement after scoring a perfect score of 36 on the ACT test in 2020.

### ACT Composite Scores



## Projects Underway



Renovations and New Addition at Papillion La Vista High School



9th Grade Wing Addition at Papillion La Vista South High School

#### 2022

- Renovations and the addition at PLHS.
- Renovations and addition at Carriage Hill.
- Renovations and addition at La Vista West.



Newly Renovated Classroom at Carriage Hill

## Coming Soon...

- Purchase of land for a future elementary school.
- Team meeting room at Foundation Field.
- Addition at Liberty Middle School.
- Renovations and addition at Rumsey Station Elementary.



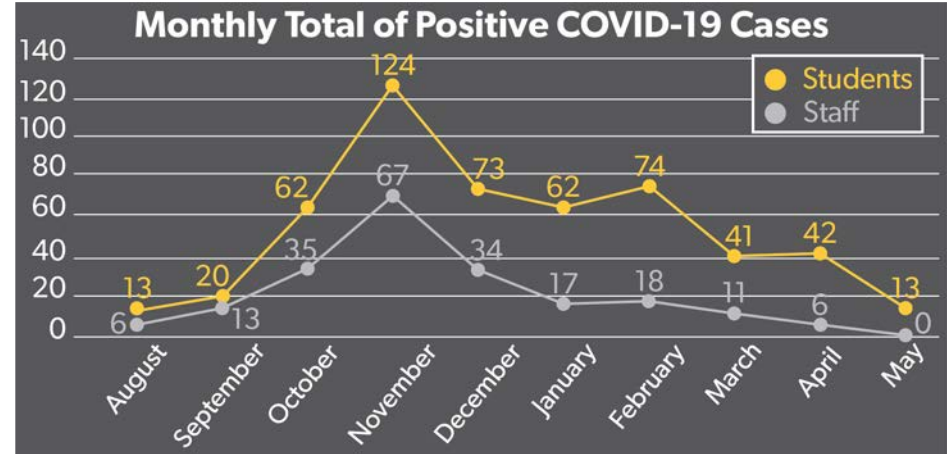
# Vaccinations... The Game Changer!



**6** Staff Clinics  
**3** Student & Family Clinics  
**1,705** PLCS Staff Members & Substitutes Vaccinated

## Vaccination Clinics Offered for PLCS Employees

Over the course of six weeks, in March and April, all PLCS staff had the opportunity to receive their full COVID-19 vaccination at a Sarpy/Cass Health Department vaccination clinic for county educators, hosted at Papillion La Vista South High School.



*"This year was unique and a year like no other. But by working together, we've been able to accomplish things that no one thought was possible to keep our schools open. Being able to get our vaccine and being prioritized by the Sarpy/Cass County Health Department will enable us to finish the year strong and is just one additional weight lifted off of staff members' backs."*  
 - Linda Poole, PLCS Teacher

# Graduation 2021

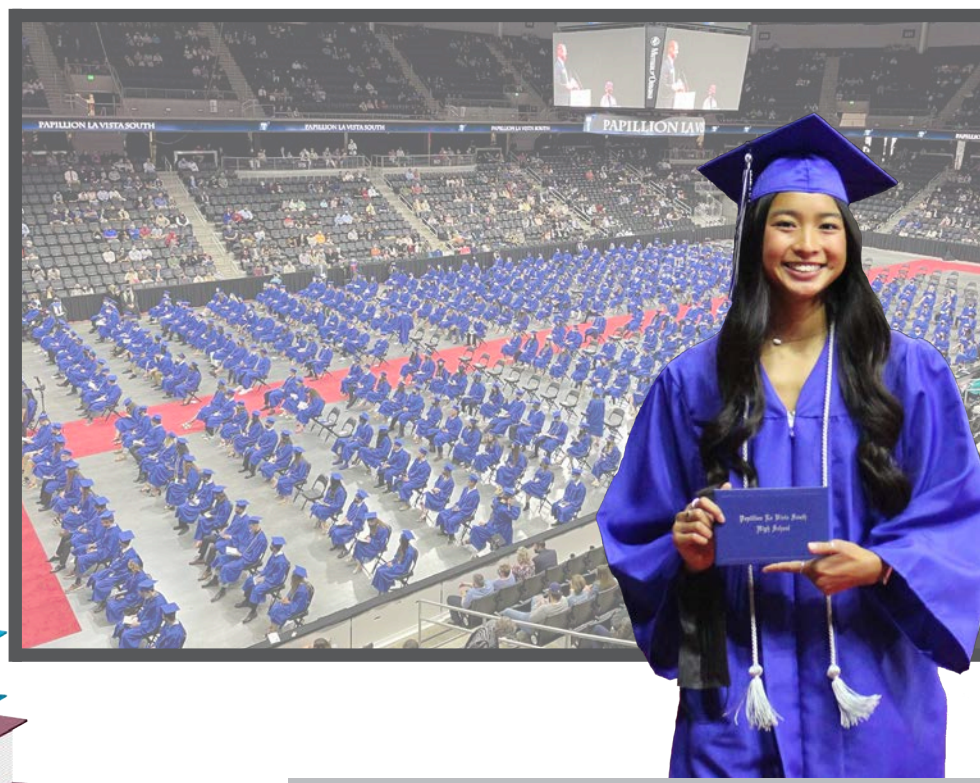


*"Find your passion, pursue it and live your life to the fullest. Create your future. Because things could change in a matter of moments, and you never know when you're going to have to pull a mask over your nose."*  
 - Zachary Long, PLHS 2021 Graduate

## \$37.2 Million

424 PLCS 2021 graduates received 1,500 scholarships for a total of approximately \$37.2 million.

## Where Do PLCS Graduates Go?



## Governor DHM

- March 2021 through May 2021**
- Schools remain open.
  - 100% indoor capacity for extracurricular activities.
  - 100% capacity for indoor and outdoor gatherings.
  - No restrictions on bars, restaurants, churches, weddings, funerals, gyms, fitness centers, spas, salons, elective surgeries, child care services.

**FULLY VACCINATED**



## New Kind of Prom

It was prom like no other! In 2021, PLHS and PLSHS students and staff rallied to create new prom experiences that could maintain COVID-19 safety protocols. Titans hosted prom outdoors on Foundation Field on April 10, complete with glistening photo ops, lawn games and food vendors. Monarchs hosted prom at school on April 17 after cold temperature forecasts pushed the event indoors, where students enjoyed animal encounters, games and food vendors in the school's halls and gyms. Between the two high schools, students expressed gratefulness to be able to attend the unique events after the end of 2020 cut short many similar experiences the year before.

