

Trombone/Baritone B.C. Major Scales

Circle of Fourths (Flats)

ORDER OF FLATS = B E A D G C F
(BEAD Greatest Common Factor)

C Major (Concert C)



F Major (Concert F)



B_♭ Major (Concert B_♭)



E_♭ Major (Concert E_♭)



A_♭ Major (Concert A_♭)



D_♭ Major (Concert D_♭)



G_♭ Major (Concert G_♭)



C_♭ Major (Concert C_♭)



ENHARMONICS:

A_♭ = G# B_♭ = A# C_♭ = B D_♭ = C# E_♭ = D# F_♭ = E G_♭ = F#
A# = B_♭ B# = C C# = D_♭ D# = E_♭ E# = F F# = G_♭ G# = A_♭

Trombone/Baritone B.C. Major Scales

Circle of Fifths (Sharps)

ORDER OF SHARPS = F C G D A E B
(Flowers Can Grow During Anything Except Blizzards)

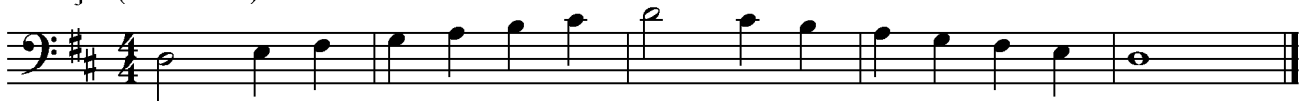
C Major (Concert C)



G Major (Concert G)



D Major (Concert D)



A Major (Concert A)



E Major (Concert E)



B Major (Concert B)



F# Major (Concert F#)



C# Major (Concert C#)



ENHARMONICS:

A# = B_b B# = C C# = D_b D# = E_b E# = F F# = G_b G# = A_b

A_b = G# B_b = A# C_b = B D_b = C# E_b = D# F_b = E G_b = F#