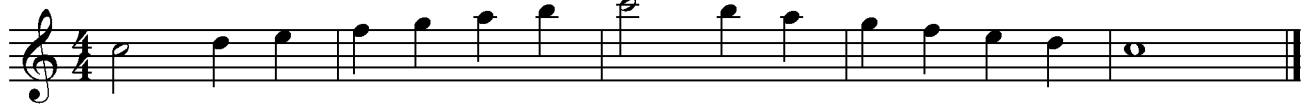


Flute Major Scales

Circle of Fourths (Flats)

ORDER OF FLATS = B E A D G C F
(BEAD Greatest Common Factor)

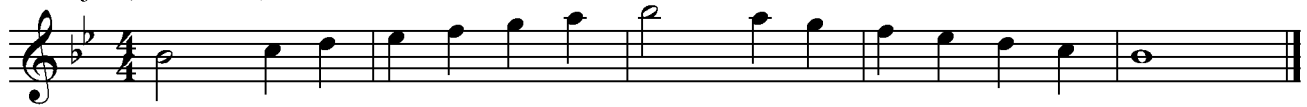
C Major (Concert C)



F Major (Concert F)



B \flat Major (Concert B \flat)



E \flat Major (Concert E \flat)



A \flat Major (Concert A \flat)



D \flat Major (Concert D \flat)



G \flat Major (Concert G \flat)



C \flat Major (Concert C \flat)



ENHARMONICS:

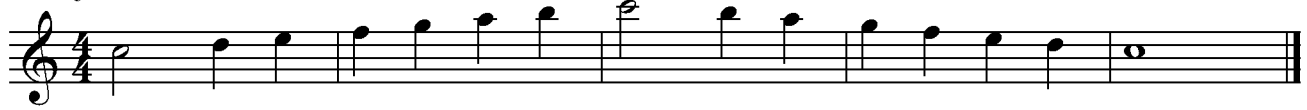
A \flat = G# B \flat = A# C \flat = B D \flat = C# E \flat = D# F \flat = E G \flat = F#
A# = B \flat B# = C C# = D \flat D# = E \flat E# = F F# = G \flat G# = A \flat

Flute Major Scales

Circle of Fifths (Sharps)

ORDER OF SHARPS = F C G D A E B
(Flowers Can Grow During Anything Except Blizzards)

C Major (Concert C)



G Major (Concert G)



D Major (Concert D)



A Major (Concert A)



E Major (Concert E)



B Major (Concert B)



F# Major (Concert F#)



C# Major (Concert C#)



ENHARMONICS:

A# = B_b, B# = C, C# = D_b, D# = E_b, E# = F, F# = G_b, G# = A_b,

A_b = G#, B_b = A#, C_b = B, D_b = C#, E_b = D#, F_b = E, G_b = F#