

July 17, 2023

Roanoke County Public Schools
5937 Cove Road
Roanoke, Virginia 24109

Attention: Mike Koffman, Construction Manager
540-562-3900 ext. 10156 / Email: Mkoffman@rcps.us

Subject: Asbestos Survey Services
Glen Cove Elementary School
5901 Cove Road
Roanoke, Virginia 24019
H&P Project: 20230842

Mr. Koffman:

Hurt & Proffitt, Inc. (H&P) was requested to conduct a suspect asbestos containing material sampling in Glen Cove Elementary School located at 5901 Cove Road in Roanoke, Virginia. This letter and attachments represent H&P's report for the above-referenced project.

1.0 Background Information

The subject site is Glen Cove Elementary School. The survey involved the sampling of suspect asbestos containing materials (ACM) in the school located at 5901 Cove Road in Roanoke, Virginia. The sampling were performed by H&P representatives Ms. Mary Beth Wriston (Virginia Asbestos Inspector License number is 3303 003466) and Mr. Roy Wriston (Virginia Asbestos License number is 3303 003648) on June 1 and 2, 2023.

2.0 Asbestos-Containing Materials Sampling

The survey sampling was performed for compliance with the Occupational and Health Administration (OSHA) and Environmental Protection Agency (US EPA) National Emission Standards for Hazardous Air Pollutants (NESHAPs). Physical inspection and assessment were performed to identify suspect asbestos-containing materials and collect representative samples for analysis to confirm the presence or absence of asbestos. During the conduct of this testing, sampling was limited to those materials which were within the areas designated by the client, which were safely accessible, and that could be sampled without damaging systems or structures. As such, if other ACM materials are revealed during renovation/demolition that are not represented in this survey, they should be presumed to be positive unless sampling is conducted, and they are shown to be negative for asbestos. Materials should be sampled by a Virginia licensed Asbestos Inspector prior to disturbance.

A total of one hundred and thirty (130) suspect asbestos-containing bulk material samples were submitted for analysis by EPA Method No. 600/R-93/116 and 600/M4-82-020 (polarized light microscopy (PLM)). All samples were analyzed by SanAir Technologies Laboratory of North Chesterfield, Virginia, a NVLAP accredited laboratory (200870-0) licensed to perform asbestos bulk analysis within the Commonwealth



of Virginia. Copies of the laboratory certificates of analysis and chain of custody forms are included as an attachment. Under microscopy, an additional sixty-one (61) material layers were identified; therefore, a total of one hundred ninety-one (191) analyses were conducted on the materials sampled at the building.

2.1 Materials That Tested As Asbestos Containing Materials (>1%)

Based on the results of analysis, the following ACM materials were found to contain asbestos (>1%):

- **Black and White Mastic on Insulation Jacketing of Water Lines, Elbows, and Valves**
- **Black Mastic associated with 12”X12” White with Gray Streaks Floor Tile**
- **Bottom Layer Floor Tile and Black Mastic under 12”X12” Floor Tile**
- **9”X9” White Floor Tile and Associated Black Mastic**
- **Black Window Bedding Caulk**
- **White Interior Door Frame Caulk**
- **9”X9” Floor Tile with Gray Streaks and associated Black Mastic**
- **Sink Bottom Coating**
- **Floor Tile under Linoleum**

2.2 Materials That Tested Positive for Asbestos (<1%)

Based on the results of analysis, the following materials were found to contain a trace level of asbestos (<1%):

- **White Mastic on 2” Line Insulation**

The following table provides detailed listings and descriptions of the materials identified, sampled, and analyzed for the presence or absence of asbestos that were collected from the structure. The table also provides a description of the materials, approximate locations where the samples were taken, estimated quantity of ACM for positive materials and analytical results as received from the laboratory. Annotated site drawings showing the approximate locations where the samples were collected are included as an attachment.



Table I: Asbestos-Containing Bulk Material Sample Analysis Result

Sample No.	Material Description	Location	Lab Results (% Asbestos)	Condition Friable Yes/No	Estimated Quantity
TSL-006A	Black Mastic	1" Line Insulation Boys Restroom	2% Chrysotile	No	Throughout
FLVCT-012A	12x12 White with Grey Streaks Floor Tile	Room 104	None Detected	N/A	N/A
	Black Mastic		3% Chrysotile	No	3,500 FT ²
PE-021A	Insulation	2 nd Floor Mech Room 4	None Detected	N/A	N/A
	5" Elbow Wrap		None Detected	N/A	N/A
	Sealant (White Mastic)		3% Chrysotile	No	Throughout
PE-021B	Insulation	2 nd Floor Mech Room 1	None Detected	N/A	N/A
	5" Elbow Wrap		None Detected	N/A	N/A
	Sealant (White Mastic)		Sample Not Analyzed Per Positive Stop		
PE-026A	Insulation	Girls Restroom	None Detected	N/A	N/A
	6" Elbow Black Mastic		10% Chrysotile	No	Throughout
PE-027A	Insulation	Girls Restroom	None Detected	N/A	N/A
	2.5" Line Black Mastic		8% Chrysotile	No	Throughout
	Wrap		None Detected	N/A	N/A
FLVCT-029A	Floor Tile	Under 12x12 Tile In Room 109	2% Chrysotile	No	3,400 FT ²
	Black Mastic		4% Chrysotile	No	
PL-030A	2.5 "Line Insulation	Boys Restroom Room 109	None Detected	N/A	N/A
	Black Mastic		10% Chrysotile	No	Throughout
PL-033A	6" Line Insulation	Mech Room 5	None Detected	N/A	N/A



Sample No.	Material Description	Location	Lab Results (% Asbestos)	Condition Friable Yes/No	Estimated Quantity
	Black Mastic		10% Chrysotile	No	Throughout
FLVCT-034A	9x9 White Floor Tile	Audio Visual Materials Room	2% Chrysotile	No	400 FT ²
	Black Mastic		5% Chrysotile	No	
IWC-061B	Black Window Bedding Caulk	Interior Windows Across From Elevator	3% Chrysotile	No	Throughout
DC-062A	White Caulk	Interior Door By Room 146	2% Chrysotile	No	20 LF
	Insulation		None Detected	N/A	N/A
PM-063A	1" Line Black Mastic	1 st floor Hall @ Boy's Restroom by Room 146	8% Chrysotile	No	Throughout
FLVCT-064A	9x9 Floor tile with Grey Streaks	Room 145	3% Chrysotile	No	400 Ft ²
	Black Mastic		8% Chrysotile	No	
PEM-068A	6" Elbow Black Mastic	By Elevator Room	7% Chrysotile	No	Throughout
SBC-070A	Sink Bottom Coating	Room 137	2% Chrysotile	No	6 Ft ²
BLM-071A	Black Mastic on 1.5" Line	Room 137	5% Chrysotile	No	Throughout
LEM-080A	3" Line Insulation	Mech Room	None Detected	N/A	N/A
	White Mastic		4% Chrysotile	No	Throughout
LM-081A	2" Line White Mastic	Mech Room	< 1% Chrysotile	No	Throughout
FL-091A	Linoleum	Clinic	None Detected	N/A	N/A
	Floor Tile		3% Chrysotile	No	200 Ft ²
SC-092A	Sink Bottom Black Coating	Room 109	2% Chrysotile	No	6 FT ²



Sample No.	Material Description	Location	Lab Results (% Asbestos)	Condition Friable Yes/No	Estimated Quantity
FL-091B	Floor Tile	Clinic Restroom	Sample Not Analyzed Per Positive Stop		
WLB-001A	Wall Board	Perimeter Wall Room 104	None Detected	N/A	N/A
WLB-001B	Wall Board	Perimeter Wall Room 109	None Detected	N/A	N/A
WLB-001C	Wall Board	Perimeter Wall Room 118	None Detected	N/A	N/A
CLLI-002A	2x4 Fissured Ceiling Tile	Room 104	None Detected	N/A	N/A
CLLI-002B	2x4 Large Fissured Ceiling Tile	Room 108 Conference Room	None Detected	N/A	N/A
CLLI-003A	2x4 Fissured white Ceiling Tile	Room 104	None Detected	N/A	N/A
CLLI-003B	2x4 White Ceiling Tile	Hall @ Mech Room 5	None Detected	N/A	N/A
TSE-004A	1" Hard Elbow	Boys Restroom 2 nd Floor	None Detected	N/A	N/A
TSV-005A	1" Hard Valve	Boy's Restroom	None Detected	N/A	N/A
TE-007A	2" Elbow Hard Elbow	Boy's Restroom	None Detected	N/A	N/A
TV-008A	2" Hard Valve	Boy's Restroom	None Detected	N/A	N/A
TI-009A	2" Line Insulation	Boy's Restroom	None Detected	N/A	N/A
CLLI-010A	2x4 Dotted Ceiling Tile	Boy's Restroom 2 nd Floor	None Detected	N/A	N/A
DLI-011A	HVAC Leg Insulation	Room 103	None Detected	N/A	N/A
FLVCT-013A	12X12 BLUE FLOOR TILE	Room 104	None Detected	N/A	N/A



Sample No.	Material Description	Location	Lab Results (% Asbestos)	Condition Friable Yes/No	Estimated Quantity
	Yellow Mastic		None Detected	N/A	N/A
PE-014A	1" Elbow Hard Elbow	Mech Room 3	None Detected	N/A	N/A
	Wrap		None Detected	N/A	N/A
PI-015A	1" Vertical Line Insulation	Mech Room 3	None Detected	N/A	N/A
	Wrap		None Detected	N/A	N/A
PE-016A	8" Elbow Insulation	Mech Room 3	None Detected	N/A	N/A
	Wrap		None Detected	N/A	N/A
DM-017A	Duct Mastic Yellow	Mech Room 1	None Detected	N/A	N/A
	Wrap		None Detected	N/A	N/A
WL-018A	Drywall	Room 130	None Detected	N/A	N/A
	Joint Compound		None Detected	N/A	N/A
WL-018B	Drywall	Mech Room 4	None Detected	N/A	N/A
	Joint Compound		None Detected	N/A	N/A
WL-018C	Drywall	Room 121	None Detected	N/A	N/A
	Joint Compound		None Detected	N/A	N/A
CBM-019A	Brown Cove Base	Conference Room 128	None Detected	N/A	N/A
	Mastic		None Detected	N/A	N/A
IWC-020A	Interior Window Frame Caulk	Room 126	None Detected	N/A	N/A
IWC-020B	Interior Window Frame Caulk	Room 120	None Detected	N/A	N/A
PW-022A	5" Line Mastic	Mech Room 4	None Detected	N/A	N/A
PE-023A	2" Hard Elbow	Mech Room 4	None Detected	N/A	N/A
	Wrap		None Detected	N/A	N/A
PIW-024A	2" Line Insulation	Mech Room 4	None Detected	N/A	N/A
	Wrap		None Detected	N/A	N/A



Sample No.	Material Description	Location	Lab Results (% Asbestos)	Condition Friable Yes/No	Estimated Quantity
PE-025A	1" Hard Elbow	Mech Room 4	None Detected	N/A	N/A
	Wrap		None Detected	N/A	N/A
PE-025B	1" Hard Elbow	Mech Room 1	None Detected	N/A	N/A
	Wrap		None Detected	N/A	N/A
RDF-028A	6" Roof Drain	Hall @ Mech Room 4	None Detected	N/A	N/A
RDF-028B	6" Roof Drain	Hall By Room 120	None Detected	N/A	N/A
C-031A	Urinal Caulk	Rest Room 109	None Detected	N/A	N/A
PE-032A	2.5" Hard Elbow Insulation	Mech Room 5	None Detected	N/A	N/A
	Wrap		None Detected	N/A	N/A
DW-035A	Duct Wrap White	Mech Room 6	None Detected	N/A	N/A
DM-036A	White mastic on Metal Duct	Mech Room 6	None Detected	N/A	N/A
	Insulation		None Detected	N/A	N/A
EJ-037A	Floor Expansion Joint Caulk	Mech Room 6	None Detected	N/A	N/A
FLVCT-038A	12x12 Green Floor Tile	Room 121	None Detected	N/A	N/A
	Yellow Mastic		None Detected	N/A	N/A
FLVCT-039A	12x12 White Floor Tile	Room 121	None Detected	N/A	N/A
	Yellow Mastic		None Detected	N/A	N/A
CM-040A	Carpet Mastic	Media Center Library	None Detected	N/A	N/A
PV-041A	5" Hard Valve Insulation	Mech Room 8	None Detected	N/A	N/A
	Wrap		None Detected	N/A	N/A
WC-042A	Wall Coating	Mech Room 8	None Detected	N/A	N/A



Sample No.	Material Description	Location	Lab Results (% Asbestos)	Condition Friable Yes/No	Estimated Quantity
WC-042B	Wall Coating	Girl's Restroom	None Detected	N/A	N/A
Wc-042C	Wall Coating	Room 115	None Detected	N/A	N/A
IDC-043A	Interior Door Frame Caulk	Guidance Room	None Detected	N/A	N/A
CBM-044A	Black Cove Base	Media Center	None Detected	N/A	N/A
	Tan Mastic		None Detected	N/A	N/A
WPB-045A	Black Windowpane Bedding	Room 118	None Detected	N/A	N/A
TWC-046A	Tall Window Caulk	Room 118	None Detected	N/A	N/A
PE-047A	6" Elbow Insulation	Gym	None Detected	N/A	N/A
	Wrap		None Detected	N/A	N/A
PL-048A	6" Line Insulation	Gym	None Detected	N/A	N/A
	Wrap		None Detected	N/A	N/A
LP--049A	6" Line Through Roof	Gym	None Detected	N/A	N/A
PF-050A	Floor Mastic	Gym Floor	None Detected	N/A	N/A
	Flooring		None Detected	N/A	N/A
	Mastic		None Detected	N/A	N/A
CBM-051A	Cove Base Mastic	Gym	None Detected	N/A	N/A
WCP-052A	Wall Patch	Gym	None Detected	N/A	N/A
EJC-053A	Caulk White	Gym	None Detected	N/A	N/A
ELC-053B	Caulk White	Gym	None Detected	N/A	N/A
V-054A	Vermiculite	Gym Wall	None Detected	N/A	N/A
V-054B	Vermiculite	Wall By Room 146	None Detected	N/A	N/A
WTB-055A	Wall Tile	Gym Wall	None Detected	N/A	N/A
	Grout		None Detected	N/A	N/A
	Mastic		None Detected	N/A	N/A



Sample No.	Material Description	Location	Lab Results (% Asbestos)	Condition Friable Yes/No	Estimated Quantity
SDM-056A	Square Duct Mastic	Gym	None Detected	N/A	N/A
SDM-056B	Square Duct Mastic	Gym	None Detected	N/A	N/A
SC-057A	Stage Curtain	Gym Stage	None Detected	N/A	N/A
LF-058A	Laminate flooring Tile	Hall @ Room 146	None Detected	N/A	N/A
	Grout/Mortar		None Detected	N/A	N/A
FC-059A	Caulk	Water Fountain By Room 146	None Detected	N/A	N/A
CLLI-060A	2x4 Fissured Ceiling Tile	Hall by Room 146	None Detected	N/A	N/A
IWC-061A	Interior Window Caulk	By Room 146	None Detected	N/A	N/A
DC-062A	Interior Door Frame Caulk	By Room 146	None Detected	N/A	N/A
	Insulation		None Detected	N/A	N/A
PM-063A	1" Line Black Mastic	Hall by Boy's Restroom	None Detected	N/A	N/A
FLVCT-064A	9x9 White with Streaks Floor Tile	Room 145	None Detected	N/A	N/A
	Black Mastic		None Detected	N/A	N/A
CLLI-065A	2x4 Fissured Ceiling Tile	Boy's Restroom by Room 146	None Detected	N/A	N/A
WC-067A	Wall Caulk @Ceramic Tile	Hall by Room 143	None Detected	N/A	N/A
PEM-068A	6" Elbow Black Mastic	Near Elevator	None Detected	N/A	N/A
P-069A	Plaster	@ Stairs near Gym	None Detected	N/A	N/A
	Skim Coat		None Detected	N/A	N/A
P-069B	Plaster		None Detected	N/A	N/A



Sample No.	Material Description	Location	Lab Results (% Asbestos)	Condition Friable Yes/No	Estimated Quantity
	Skim Coat	@ Stairs near Gym	None Detected	N/A	N/A
P-069C	Plaster	Stairs by Cafeteria	None Detected	N/A	N/A
	Skim Coat		None Detected	N/A	N/A
BSC-072A	Sink Caulk	Room 136 Restroom	None Detected	N/A	N/A
HE-073A	2.5" Hard Elbow	Room 136	None Detected	N/A	N/A
HE-073B	2.5" Hard Elbow Insulation	Mech Room	None Detected	N/A	N/A
	Wrap		None Detected	N/A	N/A
CBM-074A	Blue Cove Base	Room 140	None Detected	N/A	N/A
	Mastic		None Detected	N/A	N/A
CBM-075A	Black Cove Base	Room 135	None Detected	N/A	N/A
	Mastic		None Detected	N/A	N/A
WL-076A	Drywall	Room 135	None Detected	N/A	N/A
	Joint Compound		None Detected	N/A	N/A
WL-076B	Drywall	Room By Cafeteria	None Detected	N/A	N/A
	Joint Compound		None Detected	N/A	N/A
WL-076C	Drywall	Foyer	None Detected	N/A	N/A
	Joint Compound		None Detected	N/A	N/A
DWFS-077A	Drywall Fire Stop	By Unisex Restroom	None Detected	N/A	N/A
HV-078A	3" Mudded Joint Insulation	Mech Room	None Detected	N/A	N/A
	Wrap		None Detected	N/A	N/A
	Insulation		None Detected	N/A	N/A
LIJ-079A	Line Insulation Jacket	Mech Room	None Detected	N/A	N/A
LIJ-082A	1" Line Jacketing	Mech Room	None Detected	N/A	N/A



Sample No.	Material Description	Location	Lab Results (% Asbestos)	Condition Friable Yes/No	Estimated Quantity
MG-083A	Mortar	Kitchen Floor	None Detected	N/A	N/A
	Grout		None Detected	N/A	N/A
CLLI-084A	Ceiling Tile	Kitchen	None Detected	N/A	N/A
TGM-085A	Ceramic Tile	Kitchen Wall	None Detected	N/A	N/A
	Skim Coat		None Detected	N/A	N/A
	Plaster		None Detected	N/A	N/A
FLVCT-086A	12x12 Green Floor Tile	Cafeteria	None Detected	N/A	N/A
	Yellow Mastic		None Detected	N/A	N/A
FLVCT-087A	12x12 White Floor Tile	Cafeteria	None Detected	N/A	N/A
	Yellow Mastic		None Detected	N/A	N/A
CLLI-088A	2x2 Ceiling Tile	Cafeteria	None Detected	N/A	N/A
FLVCT089A	12x12 White W Blue Streaks Floor Tile	Asist Principal Office	None Detected	N/A	N/A
	Yellow Mastic		None Detected	N/A	N/A
FLVCT-089B	12x12 White W Blue Streaks Floor Tile	Principal's Office	None Detected	N/A	N/A
	Yellow Mastic		None Detected	N/A	N/A
CT-090A	Ceiling Texture	Office Records Room	None Detected	N/A	N/A
FLVCT-093A	12x12 White Floor Tile	By Elevator	None Detected	N/A	N/A
	Tan mastic		None Detected	N/A	N/A
FLVCT-093B	12x12 White Floor Tile	Room 135	None Detected	N/A	N/A
	Tan Mastic		None Detected	N/A	N/A
EDC-094A	Caulk	Exterior Door Frame	None Detected	N/A	N/A



Sample No.	Material Description	Location	Lab Results (% Asbestos)	Condition Friable Yes/No	Estimated Quantity
EDC-094B	Caulk	Exterior Door Frame	None Detected	N/A	N/A
EDC-094C	Caulk	Exterior Door Frame	None Detected	N/A	N/A
ECT-095A	Ceiling Texture	Building Exterior	None Detected	N/A	N/A
WC-096A	Caulk	Exterior Window Frame	None Detected	N/A	N/A
WC-096B	Caulk	Exterior Window Frame	None Detected	N/A	N/A
CT-097A	Ceiling Texture	Building Exterior	None Detected	N/A	N/A
EJC-098A	Caulk	Exterior Expansion Joint	None Detected	N/A	N/A
FL-091B	Linoleum	Clinic Restroom	None Detected	N/A	N/A

Table Notes: A, B, C the following sample identification denotes multiple samples collected of the same homogenous material from various functional spaces of the structure.
 Sample Analysis was performed under "Positive Stop" protocol, i.e.: the laboratory analyzed multiple samples of similar material and stopped analysis when asbestos fibers were identified.

A copy of the laboratory report of analysis along with drawings illustrating locations of positive samples and identified asbestos-containing materials are included as an attachment.

3.0 Discussion and Recommendations

This survey was performed to identify asbestos containing materials at the school for compliance with EPA NESHAP regulations listed in 40 CFR Part 61 Subpart M prior to planned renovations. H&P recommends having an **Asbestos Abatement Specification Design** developed for any renovation projects to confirm locations of all affected materials in the work areas, refine quantity estimates and provide direction for the abatement contractor.

In order to obtain a building permit for proposed renovation activities, this report must accompany the application to the county, town and/or city for which the work is to take place. It is the responsibility of the contractor performing the abatement and/or building renovation activities that the proper permits are obtained and notifications for each type of activity be performed as required by state and federal



guidelines. Local, state and federal law require regulated asbestos-containing materials (RACM) to be removed prior to demolition. The definition of RACM as defined by the EPA NESHAPs as follows:

Regulated Asbestos-Containing Material (RACM) is (a) friable asbestos material, (b) Category I non-friable ACM that has become friable, (c) Category I non-friable ACM that will be or has been subjected to sanding, grinding, cutting or abrading, or (d) Category II non-friable ACM that has a high probability of becoming or has become crumbled, pulverized, or reduced to powder by the forces expected to act on the material in the course of demolition or renovation operations.

Category I nonfriable asbestos-containing material (ACM) means asbestos-containing packings, gaskets, resilient floor covering, and asphalt roofing products containing more than 1 percent asbestos.

Category II nonfriable ACM means any material, excluding Category I nonfriable ACM, containing more than 1 percent asbestos.

RACM Friable and Category II Non-Friable Asbestos-Containing Materials are required to be removed if the materials may be disturbed during renovation or demolition activities. The following materials have been identified as either Friable or Category II Non-Friable:

- **Black and White Mastic on Insulation Jacketing of Water Lines, Elbows, and Valves**
- **Black Window Bedding Caulk**
- **White Interior Door Frame Caulk**
- **Sink Bottom Coating**

Category I Non-Friable and Materials that Contain Asbestos (<1%): Based upon our experience, we recommend that all asbestos-containing materials (ACM) and materials that contain asbestos (<1%) be removed prior to demolition activities since disturbance can; create potential exposure to workers and occupants and potentially make the materials friable. This recommendation is made as a best management practice (BMP) to reduce potential exposure and limit liability. If the buildings will be demolished, it is expected that the Category I Non-Friable materials will be made friable.

- **Black Mastic associated with 12”X12” White with Gray Streaks Floor Tile**
- **Bottom Layer Floor Tile and Black Mastic under 12”X12” Floor Tile**
- **9”X9” White Floor Tile and associated Black Mastic**
- **9”X9” Floor Tile with Gray Streaks and associated Black Mastic**
- **Floor Tile under Linoleum**

Materials that Contain Asbestos (<1%). H&P recommends the following material(s) that contain asbestos at a Trace Level (<1%) be removed prior to demolition:

- **White Mastic on 2” Line Insulation; however, samples collected of similar white mastic material contained 3-4% Chrysotile. Due to an inability to determine which mastic is positive and those that may be at a trace level, H&P recommends that all white mastic on insulation be assumed to be asbestos containing.**

Less than one percent (<1%) or “Trace” concentrations of asbestos mineral does not meet the definition of an Asbestos-Containing Material as defined by the EPA; however, the material does require personnel performing removal actions to be certified to perform said work, with a competent person, i.e.: Virginia DPOR licensed Asbestos Supervisor, managing the project. Removal of less than one percent (<1%) or



Trace materials is considered “non-classified” removal by the OSHA and must be performed in a designated work area with the generated waste containerized in accordance with OSHA Standards during the removal process; however, the generated waste may be disposed of as construction debris. **Note:** Local regulations may be more stringent; therefore, it is advisable for the contractor to check local regulations for proper removal and disposal requirements.

Presumed Asbestos-Containing Materials (PACM). Due to access restrictions, the asbestos content of the following building materials could not be determined and are therefore considered as PACM:

- Fire doors. If suspected ACM containing doors are encountered, they should be inspected to ensure asbestos is not present in the door core.
- Pipe insulation or ducting that may be concealed in wall cavities, above hard ceilings or in chases that were not accessible during the survey.
- Electrical equipment wiring (i.e., control panels) and switches and panel backer boards.
- Mastics that could be concealed behind chalkboards/whiteboards.
- Vibration damper cloths.
- Flange gaskets.

The above materials should be presumed to be asbestos containing unless proven otherwise by laboratory analysis.

It is **required** that a Virginia Department of Professional Occupation Regulation (DPOR) licensed asbestos abatement contractor perform the removal of the asbestos-containing materials described within this report. It is **additionally required** that a twenty (20) day asbestos abatement notification be submitted to the Virginia Department of Labor and Industry (VA DOLI) and/or EPA National NESHAP division prior to commencement of asbestos abatement activities; **additionally**, both DOLI and the EPA NESHAPs division must be notified 10 (ten) days prior to the start renovation activities at the structure, if load-bearing structures are to be removed.

Based upon our experience, we recommend that all asbestos-containing materials (ACM) be removed prior to demolition activities, due to the fact that disturbance can damage the materials, create potential exposure to workers and occupants, and additionally make the materials friable. This recommendation is made as a best management practice (BMP) to reduce potential exposure and limit liability.

Virginia Administrative Code (VAC), 18 VAC 15-20-455.1 states: *Abatement projects that require a project monitor. A project monitor is required on: 1. Asbestos projects performed in buildings that are occupied or intended to be occupied upon completion of the asbestos project exceeding 260 linear feet or 160 square feet or 35 cubic feet of asbestos-containing material; or 2. Whenever the building or property owner deems it necessary to monitor asbestos projects.* If required, Hurt & Proffitt can perform third-party asbestos project monitoring, which will help maintain the integrity of the abatement process, solidify that the abatement process has been completed correctly, through final visual clearance inspection(s) and final air clearance sampling in compliance with NIOSH 7400 Phase Contrast Microscopy (PCM) methodologies or through the collection and analysis of Transmission Electron Microscopy (TEM). As third-party monitor, we will reduce the liability for which the Client and/or the Contractor may incur if there should happen to be a violation determined by state and/or federal code enforcement personnel that may visit the site during the removal process.



If asbestos-containing material removal activities are not to be performed, an AHERA-compliant Asbestos Management Plan must be written by a VA DPOR licensed Asbestos Management Planner and followed by the building owner and manager.

Our recommendations are based on the guidelines presented by OSHA, EPA, and the Commonwealth of Virginia. Any conditions discovered which deviate from the data contained in this report should be presented to us for our evaluation. During the process of this inspection/assessment, bulk material sampling was limited to those materials which were within the areas designed by the client, which were safely accessible, and which were able to be sampled without damaging systems and/or structures. As such, additional ACM or presumed asbestos-containing materials (PACM) may exist, either undetected and/or inaccessible within other areas of the structure(s). If additional suspect materials are discovered during either the asbestos-containing material abatement or renovation/demolition activities, all work on the site must stop and the newly identified material(s) sampled by a Virginia licensed Asbestos Inspector and evaluated for asbestos content.

4.0 Limitations

This report summarizes the results of our sample collection and analysis based on our understanding of the requested scope of work. The findings prepared by H&P are based upon our observations and the analytical analysis of the samples collected at the time of our field inspection. The services performed were provided in accordance with generally accepted environmental industry standard practices. No warranty, expressed or implied, is made. Our observations, conclusions and recommendations are based upon conditions readily visible at the site at the time of our visit, the results of testing and analysis and information provided to us by others. Our conclusions and recommendations are based on the guidelines presented by the EPA, Commonwealth of Virginia and OSHA. Any conditions discovered which deviate from the data contained in this report should be presented to us for our evaluation. This report has been prepared for the exclusive use of the client and/or their agents.

During H&P's non-invasive inspection, accessible areas were visually surveyed for the presence of ACM. Areas reviewed were limited to those identified by the Client and that could be readily and safely accessed. During this study, suspect asbestos samples were submitted for analysis at an NVLAP-accredited laboratory via polarized light microscopy and suspect LBP was analyzed using industry standard methods and practices. As with any similar survey of this nature, actual conditions exist only at the precise locations from which samples were collected. Certain inferences are based on the results of this sampling and related testing to form a professional opinion of conditions in areas beyond those from which the samples were collected. It is also understood that this is a limited survey so that it is possible that concealed materials may be present that were not accessible to us. No other warranty, expressed or implied, is made.

H&P assumes no responsibility regarding response actions initiated as a result of our findings; nor liability for the duties and responsibilities of the Client or building owner with respect to compliance with applicable regulations. Compliance with regulations are the responsibility of the Client or building owner in accordance with local, state, and/or federal requirements.



Closing

Thank you for allowing Hurt & Proffitt the opportunity to be of service to you. Should you have any questions and/or concerns, please do not hesitate to contact the undersigned via email or by telephone at 540.777.0265.

Respectfully,
Hurt & Proffitt, Inc.

A handwritten signature in blue ink that reads 'Roy Wriston'.

Roy Wriston
Industrial Hygiene Senior
rwriston@handp.com

A handwritten signature in blue ink that reads 'Gregory L. Whitt'.

Gregory L. Whitt
Roanoke Environmental Group Manager
gwhitt@handp.com

Attachments:

- Laboratory Report(s) of Analysis and Chain of Custody Forms
- Positive Asbestos Samples Location Drawings
- Copies of Inspector Licenses.

COMMONWEALTH of VIRGINIA

Department of Professional and Occupational Regulation

9960 Mayland Drive, Suite 400, Richmond, VA 23233

Telephone: (804) 367-8500

EXPIRES ON

11-30-2023

NUMBER

3303003648

BOARD FOR ASBESTOS, LEAD, AND HOME INSPECTORS
ASBESTOS INSPECTOR LICENSE



ROY LEE WRISTON
108 CORVETTE DRIVE NE
FLOYD, VA 24091



Demetrios J. Mella
Demetrios J. Mella, Director

Status can be verified at <http://www.dpor.virginia.gov>

(SEE REVERSE SIDE FOR PRIVILEGES AND INSTRUCTIONS)

DPOR-LIC (02/2017)

COMMONWEALTH of VIRGINIA

Department of Professional and Occupational Regulation

9960 Mayland Drive, Suite 400, Richmond, VA 23233

Telephone: (804) 367-8500

EXPIRES ON

02-29-2024

NUMBER

3303003466

BOARD FOR ASBESTOS, LEAD, AND HOME INSPECTORS
ASBESTOS INSPECTOR LICENSE



MARY BETH WRISTON
108 CORVETTE DRIVE NE
FLOYD, VA 24091



Demetrios J. Mella
Demetrios J. Mella, Director

Status can be verified at <http://www.dpor.virginia.gov>

(SEE REVERSE SIDE FOR PRIVILEGES AND INSTRUCTIONS)

DPOR-LIC (02/2017)



The Identification Specialists

Analysis Report
prepared for
Hurt & Proffitt, Inc.

Report Date: 6/16/2023

Project Name: Glen Cove Elementary

Project #: 20230842

SanAir ID#: 23030755



NVLAP LAB CODE 200870-0

10501 Trade Court | North Chesterfield, Virginia 23236
888.895.1177 | 804.897.1177 | fax: 804.897.0070 | IAQ@SanAir.com | SanAir.com



SanAir ID Number

23030755

FINAL REPORT

6/16/2023 11:05:54 AM

Name: Hurt & Proffitt, Inc.
Address: 2524 Langhorne Road
Lynchburg, VA 24501
Phone: 434-841-3893 (c)

Project Number: 20230842
P.O. Number: 20230842
Project Name: Glen Cove Elementary
Collected Date: 6/1/2023 - 6/2/2023
Received Date: 6/6/2023 10:20:00 AM

Dear Roy Wriston,

We at SanAir would like to thank you for the work you recently submitted. The 127 sample(s) were received on Tuesday, June 06, 2023 via UPS. The final report(s) is enclosed for the following sample(s): WLB-001A, WLB-001B, WLB-001C, CLLI-002A, CLLI-002B, CLLI-003A, CLLI-003B, TSE-004A, TSV-005A, TSL-006A, TE-007A, TV-008A, TL-009A, CLLI-010A, DLI-011A, FLVCT-012A, FLVCT-013A, PE-014A, PI-015A, PE-016A, DM-017A, WL-018A, WL-018B, WL-018C, CBM-019A, IWC-020A, IWC-020B, PE-021A, PE-021B, PW-022A, PE-023A, PIW-024A, PE-025A, PE-025B, PE-026A, PE-027A, RDF-028A, RDF-028B, FLVCT-029A, PL-030A, C-031A, PE-032A, PL-033A, FLVCT-034A, DW-035A, DM-036A, EJ-037A, FLVCT-038A, FLVCT-039A, CM-040A, PV-041A, WC-042A, WC-042B, WC-042C, IDC-043A, CBM-044A, WPB-045A, TWC-046A, PE-047A, PL-048A, LP-049A, PF-050A, CBM-051A, WCP-052A, EJC-053A, EJC-053B, V-054A, V-054B, WTB-055A, SDM-056A, SDM-056B, SC-057A, LF-058A, FC-059A, CLLI-060A, IWC-061A, IWC-061B, DC-062A, PM-063A, FLVCT-064A, CLLI-065A, PE-066A, WC-067A, PEM-068A, P-069A, P-069B, P-069C, SBC-070A, BLM-071A, BSC-072A, HE-073A, HE-073B, CBM-074A, CBM-075A, WL-076A, WL-076B, WL-076C, DWFS-077A, HV-078A, LIJ-079A, LEM-080A, LM-081A, LIJ-082A, MG-083A, CLLI-084A, TGM-085A, FLVCT-086A, FLVCT-087A, CLLI-088A, FLVCT-089A, FLVCT-089B, CT-090A, FL-091A, SC-092A, FLVCT-093A, FLVCT-093B, EDC-094A, EDC-094B, EDC-094C, ECT-095A, WC-096A, WC-096B, CT-097A, EJC-098A, EJC-098B, PM-063B, FL-091B.

These results only pertain to this job and should not be used in the interpretation of any other job. This report is only complete in its entirety. Refer to the listing below of the pages included in a complete final report.

Sincerely,

Sandra Sobrino
Asbestos & Materials Laboratory Manager
SanAir Technologies Laboratory

Final Report Includes:

- Cover Letter
- Analysis Pages
- Disclaimers and Additional Information

Sample conditions:

- 127 samples in Good condition.



SanAir ID Number
23030755
 FINAL REPORT
 6/16/2023 11:05:54 AM

Name: Hurt & Proffitt, Inc.
Address: 2524 Langhorne Road
 Lynchburg, VA 24501
Phone: 434-841-3893 (c)

Project Number: 20230842
P.O. Number: 20230842
Project Name: Glen Cove Elementary
Collected Date: 6/1/2023 - 6/2/2023
Received Date: 6/6/2023 10:20:00 AM

Analyst: Pisula, Nicholas | Mayes, Jean | Moore, Brandi | Magalis, Lane | Williams, Darien

Asbestos Bulk PLM EPA 600/R-93/116

SanAir ID / Description	Stereoscopic		Components		Asbestos Fibers
	Appearance	% Fibrous	% Non-fibrous		
WLB-001A / 23030755-001 Perimeter/2nd Floor	Grey Non-Fibrous Homogeneous		100% Other		None Detected
WLB-001B / 23030755-002 Perimeter/2nd Floor	Grey Non-Fibrous Homogeneous		100% Other		None Detected
WLB-001C / 23030755-003 Perimeter/2nd Floor	Grey Non-Fibrous Homogeneous		100% Other		None Detected
CLLI-002A / 23030755-004 2x4 Fissured Ceiling Tile/2nd Floor	White Fibrous Homogeneous	60% Cellulose 30% Min. Wool	10% Other		None Detected
CLLI-002B / 23030755-005 2x4 Fissured Ceiling Tile/2nd Floor	White Fibrous Homogeneous	60% Cellulose 30% Min. Wool	10% Other		None Detected
CLLI-003A / 23030755-006 2x4 Ceiling Tile/2nd Floor	White Fibrous Homogeneous	60% Cellulose 30% Min. Wool	10% Other		None Detected
CLLI-003B / 23030755-007 2x4 Ceiling Tile/2nd Floor	White Fibrous Homogeneous	60% Cellulose 30% Min. Wool	10% Other		None Detected
TSE-004A / 23030755-008 1" Hard Elbow/2nd Floor	Grey Non-Fibrous Homogeneous	10% Min. Wool	90% Other		None Detected
TSV-005A / 23030755-009 1" Elbow Valve/2nd Floor	Grey Non-Fibrous Homogeneous	10% Min. Wool	90% Other		None Detected
TSL-006A / 23030755-010 1" Line/2nd Floor	Black Non-Fibrous Homogeneous		98% Other		2% Chrysotile

Analyst: *Nick Ellis*

Approved Signatory: *Johnathan Wilson*

Analysis Date: 6/16/2023

Date: 6/16/2023



SanAir ID Number
23030755
 FINAL REPORT
 6/16/2023 11:05:54 AM

Name: Hurt & Proffitt, Inc.
Address: 2524 Langhorne Road
 Lynchburg, VA 24501
Phone: 434-841-3893 (c)

Project Number: 20230842
P.O. Number: 20230842
Project Name: Glen Cove Elementary
Collected Date: 6/1/2023 - 6/2/2023
Received Date: 6/6/2023 10:20:00 AM

Analyst: Pisula, Nicholas | Mayes, Jean | Moore, Brandi | Magalis, Lane | Williams, Darien

Asbestos Bulk PLM EPA 600/R-93/116

SanAir ID / Description	Stereoscopic	Components		Asbestos Fibers
	Appearance	% Fibrous	% Non-fibrous	
TE-007A / 23030755-011 2" Elbow/2nd Floor	Grey Non-Fibrous Homogeneous	10% Min. Wool	90% Other	None Detected
TV-008A / 23030755-012 2" Vavle/2nd Floor	Grey Non-Fibrous Homogeneous	10% Min. Wool	90% Other	None Detected
TL-009A / 23030755-013 2" Line/2nd Floor	Yellow Fibrous Homogeneous	95% Glass	5% Other	None Detected
CLLI-010A / 23030755-014 2x4 Dotted Ceiling Tile/2nd Floor	Grey Fibrous Homogeneous	50% Glass	50% Other	None Detected
DLI-011A / 23030755-015 HVAC Leg Insulation/2nd Floor	Various Fibrous Homogeneous	95% Glass	5% Other	None Detected
FLVCT-012A / 23030755-016 12" Floor Tile/2nd Floor, Floor Tile	White Non-Fibrous Homogeneous		100% Other	None Detected
FLVCT-012A / 23030755-016 12" Floor Tile/2nd Floor, Mastic	Black Non-Fibrous Homogeneous		97% Other	3% Chrysotile
FLVCT-013A / 23030755-017 12" Floor Tile/2nd Floor, Floor Tile	Blue Non-Fibrous Homogeneous		100% Other	None Detected
FLVCT-013A / 23030755-017 12" Floor Tile/2nd Floor, Mastic	Yellow Non-Fibrous Homogeneous		100% Other	None Detected
PE-014A / 23030755-018 1" Elbow/2nd Floor, Insulation	Gray Non-Fibrous Homogeneous	5% Glass	95% Other	None Detected

Analyst: *Nick Ellis*

Approved Signatory: *Johnathan Wilson*

Analysis Date: 6/16/2023

Date: 6/16/2023



SanAir ID Number
23030755
 FINAL REPORT
 6/16/2023 11:05:54 AM

Name: Hurt & Proffitt, Inc.
Address: 2524 Langhorne Road
 Lynchburg, VA 24501
Phone: 434-841-3893 (c)

Project Number: 20230842
P.O. Number: 20230842
Project Name: Glen Cove Elementary
Collected Date: 6/1/2023 - 6/2/2023
Received Date: 6/6/2023 10:20:00 AM

Analyst: Pisula, Nicholas | Mayes, Jean | Moore, Brandi | Magalis, Lane | Williams, Darien

Asbestos Bulk PLM EPA 600/R-93/116

SanAir ID / Description	Stereoscopic	Components		Asbestos Fibers
	Appearance	% Fibrous	% Non-fibrous	
PE-014A / 23030755-018 1" Elbow/2nd Floor, Wrap	White Fibrous Heterogeneous	90% Cellulose	10% Other	None Detected
PI-015A / 23030755-019 1" Line/2nd Floor, Insulation	Yellow Fibrous Homogeneous	95% Glass	5% Other	None Detected
PI-015A / 23030755-019 1" Line/2nd Floor, Wrap	Various Non-Fibrous Heterogeneous	30% Cellulose 5% Glass	65% Other	None Detected
PE-016A / 23030755-020 8" Elbow/2nd Floor, Insulation	Gray Non-Fibrous Homogeneous	5% Glass	95% Other	None Detected
PE-016A / 23030755-020 8" Elbow/2nd Floor, Wrap	White Fibrous Heterogeneous	90% Cellulose	10% Other	None Detected
DM-017A / 23030755-021 Duct Mastic/2nd Floor, Mastic	Yellow Non-Fibrous Homogeneous		100% Other	None Detected
DM-017A / 23030755-021 Duct Mastic/2nd Floor, Wrap	Various Non-Fibrous Heterogeneous	25% Glass	75% Other	None Detected
WL-018A / 23030755-022 Drywall/2nd Floor, Drywall	White Non-Fibrous Homogeneous	5% Cellulose	95% Other	None Detected
WL-018A / 23030755-022 Drywall/2nd Floor, Joint Compound	White Non-Fibrous Homogeneous		100% Other	None Detected
WL-018B / 23030755-023 Drywall/2nd Floor, Drywall	White Non-Fibrous Homogeneous	5% Cellulose	95% Other	None Detected

Analyst: *Nick Ellis*

Approved Signatory: *Johnathan Wilson*

Analysis Date: 6/16/2023

Date: 6/16/2023



SanAir ID Number
23030755
 FINAL REPORT
 6/16/2023 11:05:54 AM

Name: Hurt & Proffitt, Inc.
Address: 2524 Langhorne Road
 Lynchburg, VA 24501
Phone: 434-841-3893 (c)

Project Number: 20230842
P.O. Number: 20230842
Project Name: Glen Cove Elementary
Collected Date: 6/1/2023 - 6/2/2023
Received Date: 6/6/2023 10:20:00 AM

Analyst: Pisula, Nicholas | Mayes, Jean | Moore, Brandi | Magalis, Lane | Williams, Darien

Asbestos Bulk PLM EPA 600/R-93/116

SanAir ID / Description	Stereoscopic		Components		Asbestos Fibers
	Appearance	% Fibrous	% Non-fibrous		
WL-018B / 23030755-023 Drywall/2nd Floor, Joint Compound	White Non-Fibrous Homogeneous		100% Other		None Detected
WL-018C / 23030755-024 Drywall/2nd Floor, Drywall	White Non-Fibrous Homogeneous	5% Cellulose	95% Other		None Detected
WL-018C / 23030755-024 Drywall/2nd Floor, Joint Compound	White Non-Fibrous Homogeneous		100% Other		None Detected
CBM-019A / 23030755-025 Cove Base/2nd Floor, Cove Base	Brown Non-Fibrous Homogeneous		100% Other		None Detected
CBM-019A / 23030755-025 Cove Base/2nd Floor, Mastic	Cream Non-Fibrous Homogeneous		100% Other		None Detected
IWC-020A / 23030755-026 Interior Window Caulk/2nd Floor	White Non-Fibrous Homogeneous		100% Other		None Detected
IWC-020B / 23030755-027 Interior Window Caulk/2nd Floor	White Non-Fibrous Homogeneous		100% Other		None Detected
PE-021A / 23030755-028 5" Elbow/2nd Floor, Insulation	Gray Non-Fibrous Homogeneous	5% Glass	95% Other		None Detected
PE-021A / 23030755-028 5" Elbow/2nd Floor, Wrap	White Non-Fibrous Heterogeneous	90% Cellulose	10% Other		None Detected
PE-021A / 23030755-028 5" Elbow/2nd Floor, Sealant	White Non-Fibrous Homogeneous		97% Other		3% Chrysotile

Analyst: *Nick Ellis*

Approved Signatory: *Johnathan Wilson*

Analysis Date: 6/16/2023

Date: 6/16/2023



SanAir ID Number
23030755
 FINAL REPORT
 6/16/2023 11:05:54 AM

Name: Hurt & Proffitt, Inc.
Address: 2524 Langhorne Road
 Lynchburg, VA 24501
Phone: 434-841-3893 (c)

Project Number: 20230842
P.O. Number: 20230842
Project Name: Glen Cove Elementary
Collected Date: 6/1/2023 - 6/2/2023
Received Date: 6/6/2023 10:20:00 AM

Analyst: Pisula, Nicholas | Mayes, Jean | Moore, Brandi | Magalis, Lane | Williams, Darien

Asbestos Bulk PLM EPA 600/R-93/116

SanAir ID / Description	Stereoscopic	Components		Asbestos Fibers
	Appearance	% Fibrous	% Non-fibrous	
PE-021B / 23030755-029 5" Elbow/2nd Floor, Insulation	Gray Non-Fibrous Homogeneous	5% Glass	95% Other	None Detected
PE-021B / 23030755-029 5" Elbow/2nd Floor, Wrap	White Non-Fibrous Heterogeneous	90% Cellulose	10% Other	None Detected
PE-021B / 23030755-029 5" Elbow/2nd Floor, Sealant				Not Analyzed
PW-022A / 23030755-030 5" Line/2nd Floor	White Non-Fibrous Heterogeneous	10% Glass	90% Other	None Detected
PE-023A / 23030755-031 2" Elbow/2nd Floor, Insulation	Gray Non-Fibrous Homogeneous	5% Glass	95% Other	None Detected
PE-023A / 23030755-031 2" Elbow/2nd Floor, Wrap	White Non-Fibrous Heterogeneous	90% Cellulose	10% Other	None Detected
PIW-024A / 23030755-032 2" Line/2nd Floor, Insulation	Yellow Fibrous Homogeneous	95% Glass	5% Other	None Detected
PIW-024A / 23030755-032 2" Line/2nd Floor, Wrap	White Non-Fibrous Heterogeneous	30% Cellulose 10% Glass	60% Other	None Detected
PE-025A / 23030755-033 1" Elbow/2nd Floor, Insulation	Gray Non-Fibrous Homogeneous	10% Glass	90% Other	None Detected
PE-025A / 23030755-033 1" Elbow/2nd Floor, Wrap	White Non-Fibrous Heterogeneous	90% Cellulose	10% Other	None Detected

Analyst: *Nick Ellis*

Approved Signatory: *Johnathan Wilson*

Analysis Date: 6/16/2023

Date: 6/16/2023



SanAir ID Number
23030755
 FINAL REPORT
 6/16/2023 11:05:54 AM

Name: Hurt & Proffitt, Inc.
Address: 2524 Langhorne Road
 Lynchburg, VA 24501
Phone: 434-841-3893 (c)

Project Number: 20230842
P.O. Number: 20230842
Project Name: Glen Cove Elementary
Collected Date: 6/1/2023 - 6/2/2023
Received Date: 6/6/2023 10:20:00 AM

Analyst: Pisula, Nicholas | Mayes, Jean | Moore, Brandi | Magalis, Lane | Williams, Darien

Asbestos Bulk PLM EPA 600/R-93/116

SanAir ID / Description	Stereoscopic	Components		Asbestos Fibers
	Appearance	% Fibrous	% Non-fibrous	
PE-025B / 23030755-034 1" Elbow/2nd Floor, Insulation	Gray Non-Fibrous Homogeneous	10% Glass	90% Other	None Detected
PE-025B / 23030755-034 1" Elbow/2nd Floor, Wrap	White Non-Fibrous Heterogeneous	90% Cellulose	10% Other	None Detected
PE-026A / 23030755-035 6" Elbow/2nd Floor, Insulation	Gray Non-Fibrous Homogeneous	5% Glass	95% Other	None Detected
PE-026A / 23030755-035 6" Elbow/2nd Floor, Mastic	Black Non-Fibrous Homogeneous		90% Other	10% Chrysotile
PE-027A / 23030755-036 2.5" Line/2nd Floor, Insulation	Pink Fibrous Homogeneous	95% Glass	5% Other	None Detected
PE-027A / 23030755-036 2.5" Line/2nd Floor, Mastic	Black Non-Fibrous Homogeneous		92% Other	8% Chrysotile
PE-027A / 23030755-036 2.5" Line/2nd Floor, Wrap	Brown Fibrous Homogeneous	90% Cellulose	10% Other	None Detected
RDF-028A / 23030755-037 6" Roof Drain/2nd Floor	Gray Non-Fibrous Homogeneous	5% Glass	95% Other	None Detected
RDF-028B / 23030755-038 6" Roof Drain/2nd Floor	Gray Non-Fibrous Homogeneous	5% Glass	95% Other	None Detected
FLVCT-029A / 23030755-039 Tile Under 12" Tile/2nd Floor, Floor Tile	White Non-Fibrous Homogeneous		98% Other	2% Chrysotile

Analyst: *Nick Ellis*

Approved Signatory: *Johnathan Wilson*

Analysis Date: 6/16/2023

Date: 6/16/2023



SanAir ID Number
23030755
 FINAL REPORT
 6/16/2023 11:05:54 AM

Name: Hurt & Proffitt, Inc.
Address: 2524 Langhorne Road
 Lynchburg, VA 24501
Phone: 434-841-3893 (c)

Project Number: 20230842
P.O. Number: 20230842
Project Name: Glen Cove Elementary
Collected Date: 6/1/2023 - 6/2/2023
Received Date: 6/6/2023 10:20:00 AM

Analyst: Pisula, Nicholas | Mayes, Jean | Moore, Brandi | Magalis, Lane | Williams, Darien

Asbestos Bulk PLM EPA 600/R-93/116

SanAir ID / Description	Stereoscopic		Components		Asbestos Fibers
	Appearance	% Fibrous	% Non-fibrous		
FLVCT-029A / 23030755-039 Tile Under 12" Tile/2nd Floor, Mastic	Black Non-Fibrous Homogeneous		96% Other		4% Chrysotile
PL-030A / 23030755-040 2.5" Line/2nd Floor, Insulation	Yellow Fibrous Homogeneous	95% Glass	5% Other		None Detected
PL-030A / 23030755-040 2.5" Line/2nd Floor, Mastic	Black Non-Fibrous Homogeneous		90% Other		10% Chrysotile
C-031A / 23030755-041 Urinal Caulking/2nd Floor	White Non-Fibrous Homogeneous		100% Other		None Detected
PE-032A / 23030755-042 2.5 Elbow/2nd Floor, Insulation	Gray Non-Fibrous Homogeneous	5% Glass	95% Other		None Detected
PE-032A / 23030755-042 2.5 Elbow/2nd Floor, Wrap	White Fibrous Heterogeneous	90% Cellulose	10% Other		None Detected
PL-033A / 23030755-043 6" Line/2nd Floor, Insulation	Gray Non-Fibrous Homogeneous	5% Glass	95% Other		None Detected
PL-033A / 23030755-043 6" Line/2nd Floor, Mastic	Black Non-Fibrous Homogeneous		90% Other		10% Chrysotile
FLVCT-034A / 23030755-044 9" Floor Tile/2nd Floor, Tile	White Non-Fibrous Homogeneous		98% Other		2% Chrysotile
FLVCT-034A / 23030755-044 9" Floor Tile/2nd Floor, Mastic	Black Non-Fibrous Homogeneous		95% Other		5% Chrysotile

Analyst: *Nick Ellis*

Approved Signatory: *Johnathan Wilson*

Analysis Date: 6/16/2023

Date: 6/16/2023



SanAir ID Number
23030755
 FINAL REPORT
 6/16/2023 11:05:54 AM

Name: Hurt & Proffitt, Inc.
Address: 2524 Langhorne Road
 Lynchburg, VA 24501
Phone: 434-841-3893 (c)

Project Number: 20230842
P.O. Number: 20230842
Project Name: Glen Cove Elementary
Collected Date: 6/1/2023 - 6/2/2023
Received Date: 6/6/2023 10:20:00 AM

Analyst: Pisula, Nicholas | Mayes, Jean | Moore, Brandi | Magalis, Lane | Williams, Darien

Asbestos Bulk PLM EPA 600/R-93/116

SanAir ID / Description	Stereoscopic		Components		Asbestos Fibers
	Appearance	% Fibrous	% Non-fibrous		
DW-035A / 23030755-045 Duct/2nd Floor	Off-White Non-Fibrous Homogeneous	12% Glass	88% Other		None Detected
DM-036A / 23030755-046 Metal Duct Mastic/2nd Floor, Mastic	Off-White Non-Fibrous Heterogeneous		100% Other		None Detected
DM-036A / 23030755-046 Metal Duct Mastic/2nd Floor, Insulation	Yellow Fibrous Homogeneous	80% Glass	20% Other		None Detected
EJ-037A / 23030755-047 Expansion Joint/2nd Floor	Black Non-Fibrous Heterogeneous	15% Cellulose	85% Other		None Detected
FLVCT-038A / 23030755-048 12" Floor Tile/2nd Floor, Tile	Green Non-Fibrous Homogeneous		100% Other		None Detected
FLVCT-038A / 23030755-048 12" Floor Tile/2nd Floor, Mastic	Yellow Non-Fibrous Homogeneous		100% Other		None Detected
FLVCT-039A / 23030755-049 12" Floor Tile/2nd Floor, Tile	White Non-Fibrous Homogeneous		100% Other		None Detected
FLVCT-039A / 23030755-049 12" Floor Tile/2nd Floor, Mastic	Yellow Non-Fibrous Homogeneous		100% Other		None Detected
CM-040A / 23030755-050 Carpet Mastic/2nd Floor	Yellow Non-Fibrous Homogeneous		100% Other		None Detected
PV-041A / 23030755-051 5" Valve/2nd Floor, Insulation	Grey Non-Fibrous Homogeneous	35% Glass	65% Other		None Detected

Analyst: *Nick Ellis*

Approved Signatory: *Johnathan Wilson*

Analysis Date: 6/16/2023

Date: 6/16/2023



SanAir ID Number
23030755
 FINAL REPORT
 6/16/2023 11:05:54 AM

Name: Hurt & Proffitt, Inc.
Address: 2524 Langhorne Road
 Lynchburg, VA 24501
Phone: 434-841-3893 (c)

Project Number: 20230842
P.O. Number: 20230842
Project Name: Glen Cove Elementary
Collected Date: 6/1/2023 - 6/2/2023
Received Date: 6/6/2023 10:20:00 AM

Analyst: Pisula, Nicholas | Mayes, Jean | Moore, Brandi | Magalis, Lane | Williams, Darien

Asbestos Bulk PLM EPA 600/R-93/116

SanAir ID / Description	Stereoscopic	Components		Asbestos Fibers
	Appearance	% Fibrous	% Non-fibrous	
PV-041A / 23030755-051 5" Valve/2nd Floor, Wrap	White Fibrous Homogeneous	95% Cellulose	5% Other	None Detected
WC-042A / 23030755-052 Wall Coating/2nd Floor	Grey Non-Fibrous Heterogeneous	5% Cellulose	95% Other	None Detected
WC-042B / 23030755-053 Wall Coating/2nd Floor	Grey Non-Fibrous Heterogeneous	5% Cellulose	95% Other	None Detected
WC-042C / 23030755-054 Wall Coating/2nd Floor	Grey Non-Fibrous Heterogeneous	5% Cellulose	95% Other	None Detected
IDC-043A / 23030755-055 Interior Door Caulk/2nd Floor	White Non-Fibrous Homogeneous		100% Other	None Detected
CBM-044A / 23030755-056 Cove Base/2nd Floor, Cove Base	Black Non-Fibrous Homogeneous		100% Other	None Detected
CBM-044A / 23030755-056 Cove Base/2nd Floor, Mastic	Tan Non-Fibrous Homogeneous		100% Other	None Detected
WPB-045A / 23030755-057 Window Pane Bedding/2nd Floor	Black Non-Fibrous Homogeneous		100% Other	None Detected
TWC-046A / 23030755-058 Window Caulking/2nd Floor	White Non-Fibrous Homogeneous		100% Other	None Detected
PE-047A / 23030755-059 6" Elbow/Gym, Insulation	Grey Non-Fibrous Homogeneous	35% Glass	65% Other	None Detected

Analyst:

Approved Signatory:

Analysis Date: 6/16/2023

Date: 6/16/2023



SanAir ID Number
23030755
 FINAL REPORT
 6/16/2023 11:05:54 AM

Name: Hurt & Proffitt, Inc.
Address: 2524 Langhorne Road
 Lynchburg, VA 24501
Phone: 434-841-3893 (c)

Project Number: 20230842
P.O. Number: 20230842
Project Name: Glen Cove Elementary
Collected Date: 6/1/2023 - 6/2/2023
Received Date: 6/6/2023 10:20:00 AM

Analyst: Pisula, Nicholas | Mayes, Jean | Moore, Brandi | Magalis, Lane | Williams, Darien

Asbestos Bulk PLM EPA 600/R-93/116

SanAir ID / Description	Stereoscopic	Components		Asbestos Fibers
	Appearance	% Fibrous	% Non-fibrous	
PE-047A / 23030755-059 6" Elbow/Gym, Wrap	White Fibrous Homogeneous	95% Cellulose	5% Other	None Detected
PL-048A / 23030755-060 6" Line/Gym, Insulation	Yellow Fibrous Homogeneous	98% Glass	2% Other	None Detected
PL-048A / 23030755-060 6" Line/Gym, Wrap	Various Non-Fibrous Heterogeneous	45% Cellulose	55% Other	None Detected
LP-049A / 23030755-061 6" Line/Gym	Grey Non-Fibrous Homogeneous	35% Glass	65% Other	None Detected
PF-050A / 23030755-062 Floor/Gym, Mastic	Tan Non-Fibrous Homogeneous		100% Other	None Detected
PF-050A / 23030755-062 Floor/Gym, Flooring	Brown Non-Fibrous Homogeneous		100% Other	None Detected
PF-050A / 23030755-062 Floor/Gym, Mastic	Tan Non-Fibrous Homogeneous		100% Other	None Detected
CBM-051A / 23030755-063 Cove Base/Gym	Brown Non-Fibrous Homogeneous		100% Other	None Detected
WCP-052A / 23030755-064 Patch/Gym	White Non-Fibrous Homogeneous		100% Other	None Detected
EJC-053A / 23030755-065 Expansion Joint/Gym	White Non-Fibrous Homogeneous		100% Other	None Detected

Analyst: *Nick Ellis*

Approved Signatory: *Johnathan Wilson*

Analysis Date: 6/16/2023

Date: 6/16/2023



SanAir ID Number
23030755
 FINAL REPORT
 6/16/2023 11:05:54 AM

Name: Hurt & Proffitt, Inc.
Address: 2524 Langhorne Road
 Lynchburg, VA 24501
Phone: 434-841-3893 (c)

Project Number: 20230842
P.O. Number: 20230842
Project Name: Glen Cove Elementary
Collected Date: 6/1/2023 - 6/2/2023
Received Date: 6/6/2023 10:20:00 AM

Analyst: Pisula, Nicholas | Mayes, Jean | Moore, Brandi | Magalis, Lane | Williams, Darien

Asbestos Bulk PLM EPA 600/R-93/116

SanAir ID / Description	Components			Asbestos Fibers
	Stereoscopic Appearance	% Fibrous	% Non-fibrous	
EJC-053B / 23030755-066 Expansion Joint/Gym	White Non-Fibrous Homogeneous		100% Other	None Detected
V-054A / 23030755-067 Wall And Above Ceiling/1st Floor	Brown Non-Fibrous Homogeneous		100% Other	None Detected
V-054B / 23030755-068 Wall And Above Ceiling/1st Floor	Brown Non-Fibrous Homogeneous		100% Other	None Detected
WTB-055A / 23030755-069 Wall Tile Backing/Gym, Wall Tile	White Non-Fibrous Homogeneous		100% Other	None Detected
WTB-055A / 23030755-069 Wall Tile Backing/Gym, Grout	White Non-Fibrous Homogeneous		100% Other	None Detected
WTB-055A / 23030755-069 Wall Tile Backing/Gym, Mastic	Tan Non-Fibrous Homogeneous		100% Other	None Detected
WTB-055A / 23030755-069 Wall Tile Backing/Gym, Backing	Grey Non-Fibrous Homogeneous	20% Cellulose	80% Other	None Detected
SDM-056A / 23030755-070 Duct/Gym	Yellow Fibrous Homogeneous	95% Glass	5% Other	None Detected
SDM-056B / 23030755-071 Duct/Gym	Yellow Fibrous Homogeneous	95% Glass	5% Other	None Detected
SC-057A / 23030755-072 Curtain/Gym	Green Fibrous Homogeneous	95% Cellulose	5% Other	None Detected

Analyst: *Nick Ellis*

Approved Signatory: *Johnathan Wilson*

Analysis Date: 6/16/2023

Date: 6/16/2023



SanAir ID Number
23030755
 FINAL REPORT
 6/16/2023 11:05:54 AM

Name: Hurt & Proffitt, Inc.
Address: 2524 Langhorne Road
 Lynchburg, VA 24501
Phone: 434-841-3893 (c)

Project Number: 20230842
P.O. Number: 20230842
Project Name: Glen Cove Elementary
Collected Date: 6/1/2023 - 6/2/2023
Received Date: 6/6/2023 10:20:00 AM

Analyst: Pisula, Nicholas | Mayes, Jean | Moore, Brandi | Magalis, Lane | Williams, Darien

Asbestos Bulk PLM EPA 600/R-93/116

SanAir ID / Description	Stereoscopic Components			Asbestos Fibers
	Appearance	% Fibrous	% Non-fibrous	
LF-058A / 23030755-073 Flooring/1st Floor, Tile	White Non-Fibrous Homogeneous		100% Other	None Detected
LF-058A / 23030755-073 Flooring/1st Floor, Grout/Mortar	Grey Non-Fibrous Heterogeneous		100% Other	None Detected
FC-059A / 23030755-074 Water Fountain Caulking/1st Floor	White Non-Fibrous Homogeneous		100% Other	None Detected
CLLI-060A / 23030755-075 2x4 Fissured Ceiling Tile/1st Floor	Tan Fibrous Heterogeneous	40% Cellulose 30% Glass	30% Other	None Detected
IWC-061A / 23030755-076 Interior Window Caulking/1st Floor	Grey Non-Fibrous Homogeneous		100% Other	None Detected
IWC-061B / 23030755-077 Interior Window Caulking/1st Floor	Black Non-Fibrous Homogeneous		97% Other	3% Chrysotile
DC-062A / 23030755-078 Interior Door Caulking/1st Floor, Caulk	White Non-Fibrous Homogeneous		98% Other	2% Chrysotile
DC-062A / 23030755-078 Interior Door Caulking/1st Floor, Insulation	Brown Fibrous Homogeneous	97% Cellulose	3% Other	None Detected
PM-063A / 23030755-079 1" Line/1st Floor	Various Non-Fibrous Heterogeneous	5% Glass	87% Other	8% Chrysotile
FLVCT-064A / 23030755-080 9" With Streaks FT/1st Floor, Floor Tile	White Non-Fibrous Homogeneous		97% Other	3% Chrysotile

Analyst: *Nick Ellis*

Approved Signatory: *Johnathan Wilson*

Analysis Date: 6/16/2023

Date: 6/16/2023



SanAir ID Number
23030755
 FINAL REPORT
 6/16/2023 11:05:54 AM

Name: Hurt & Proffitt, Inc.
Address: 2524 Langhorne Road
 Lynchburg, VA 24501
Phone: 434-841-3893 (c)

Project Number: 20230842
P.O. Number: 20230842
Project Name: Glen Cove Elementary
Collected Date: 6/1/2023 - 6/2/2023
Received Date: 6/6/2023 10:20:00 AM

Analyst: Pisula, Nicholas | Mayes, Jean | Moore, Brandi | Magalis, Lane | Williams, Darien

Asbestos Bulk PLM EPA 600/R-93/116

SanAir ID / Description	Stereoscopic		Components		Asbestos Fibers
	Appearance	% Fibrous	% Non-fibrous		
FLVCT-064A / 23030755-080 9" With Streaks FT/1st Floor, Mastic	Black Non-Fibrous Homogeneous		92% Other		8% Chrysotile
CLLI-065A / 23030755-081 2x4 Fissured CT/1st Floor	Grey Fibrous Heterogeneous	80% Glass	20% Other		None Detected
PE-066A / 23030755-082 1" Elbow/1st floor	White Non-Fibrous Homogeneous	20% Glass	80% Other		None Detected
WC-067A / 23030755-083 Wall Caulking/1st Floor	White Non-Fibrous Homogeneous		100% Other		None Detected
PEM-068A / 23030755-084 6" Elbow/1st Floor	Black Non-Fibrous Homogeneous		93% Other		7% Chrysotile
P-069A / 23030755-085 Plaster Stairwells/1st Floor, Plaster	Grey Non-Fibrous Homogeneous		100% Other		None Detected
P-069A / 23030755-085 Plaster Stairwells/1st Floor, Skim Coat	White Non-Fibrous Homogeneous		100% Other		None Detected
P-069B / 23030755-086 Plaster Stairwells/1st Floor, Plaster	Grey Non-Fibrous Homogeneous		100% Other		None Detected
P-069B / 23030755-086 Plaster Stairwells/1st Floor, Skim Coat	White Non-Fibrous Homogeneous		100% Other		None Detected
P-069C / 23030755-087 Plaster Stairwells/1st Floor, Plaster	Grey Non-Fibrous Homogeneous		100% Other		None Detected

Analyst: *Nick Ellis*

Approved Signatory: *Johnathan Wilson*

Analysis Date: 6/16/2023

Date: 6/16/2023



SanAir ID Number
23030755
 FINAL REPORT
 6/16/2023 11:05:54 AM

Name: Hurt & Proffitt, Inc.
Address: 2524 Langhorne Road
 Lynchburg, VA 24501
Phone: 434-841-3893 (c)

Project Number: 20230842
P.O. Number: 20230842
Project Name: Glen Cove Elementary
Collected Date: 6/1/2023 - 6/2/2023
Received Date: 6/6/2023 10:20:00 AM

Analyst: Pisula, Nicholas | Mayes, Jean | Moore, Brandi | Magalis, Lane | Williams, Darien

Asbestos Bulk PLM EPA 600/R-93/116

SanAir ID / Description	Stereoscopic		Components		Asbestos Fibers
	Appearance	% Fibrous	% Non-fibrous		
P-069C / 23030755-087 Plaster Stairwells/1st Floor, Skim Coat	White Non-Fibrous Homogeneous		100% Other		None Detected
SBC-070A / 23030755-088 Sink Coating/1st Floor	Black Non-Fibrous Homogeneous		98% Other		2% Chrysotile
BLM-071A / 23030755-089 1.5" Line/1st Floor	Black Non-Fibrous Homogeneous		95% Other		5% Chrysotile
BSC-072A / 23030755-090 Sink Caulking/1st Floor	White Non-Fibrous Homogeneous		100% Other		None Detected
HE-073A / 23030755-091 2.5" Elbow/1st Floor	Grey Non-Fibrous Homogeneous	15% Glass	85% Other		None Detected
HE-073B / 23030755-092 2.5" Elbow/1st Floor, Insulation	Grey Non-Fibrous Homogeneous	15% Glass	85% Other		None Detected
HE-073B / 23030755-092 2.5" Elbow/1st Floor, Wrap	White Fibrous Heterogeneous	90% Cellulose	10% Other		None Detected
CBM-074A / 23030755-093 Cove Base/1st Floor, Cove Base	Blue Non-Fibrous Homogeneous		100% Other		None Detected
CBM-074A / 23030755-093 Cove Base/1st Floor, Mastic	Various Non-Fibrous Heterogeneous		100% Other		None Detected
CBM-075A / 23030755-094 Cove Base/1st Floor, Cove Base	Black Non-Fibrous Homogeneous		100% Other		None Detected

Analyst: *Nick Ellis*

Approved Signatory: *Johnathan Wilson*

Analysis Date: 6/16/2023

Date: 6/16/2023



SanAir ID Number
23030755
 FINAL REPORT
 6/16/2023 11:05:54 AM

Name: Hurt & Proffitt, Inc.
Address: 2524 Langhorne Road
 Lynchburg, VA 24501
Phone: 434-841-3893 (c)

Project Number: 20230842
P.O. Number: 20230842
Project Name: Glen Cove Elementary
Collected Date: 6/1/2023 - 6/2/2023
Received Date: 6/6/2023 10:20:00 AM

Analyst: Pisula, Nicholas | Mayes, Jean | Moore, Brandi | Magalis, Lane | Williams, Darien

Asbestos Bulk PLM EPA 600/R-93/116

SanAir ID / Description	Stereoscopic		Components		Asbestos Fibers
	Appearance	% Fibrous	% Non-fibrous		
CBM-075A / 23030755-094 Cove Base/1st Floor, Mastic	Tan Non-Fibrous Homogeneous		100% Other		None Detected
WL-076A / 23030755-095 Drywall/1st Floor, Drywall	Various Non-Fibrous Heterogeneous	10% Cellulose 2% Glass	88% Other		None Detected
WL-076A / 23030755-095 Drywall/1st Floor, Joint Compound	White Non-Fibrous Homogeneous		100% Other		None Detected
WL-076B / 23030755-096 Drywall/1st Floor, Drywall	Various Non-Fibrous Heterogeneous	10% Cellulose 2% Glass	88% Other		None Detected
WL-076B / 23030755-096 Drywall/1st Floor, Joint Compound	White Non-Fibrous Homogeneous		100% Other		None Detected
WL-076C / 23030755-097 Drywall/1st Floor, Drywall	Various Non-Fibrous Heterogeneous	10% Cellulose 2% Glass	88% Other		None Detected
WL-076C / 23030755-097 Drywall/1st Floor, Joint Compound	White Non-Fibrous Homogeneous		100% Other		None Detected
DWFS-077A / 23030755-098 1st Floor	Various Non-Fibrous Heterogeneous	10% Cellulose 2% Glass	88% Other		None Detected
HV-078A / 23030755-099 3" Joint/1st Floor, Insulation	Off-White Non-Fibrous Homogeneous	20% Glass	80% Other		None Detected
HV-078A / 23030755-099 3" Joint/1st Floor, Wrap	White Fibrous Homogeneous	95% Cellulose	5% Other		None Detected

Analyst: *Nick Ellis*

Approved Signatory: *Johnathan Wilson*

Analysis Date: 6/16/2023

Date: 6/16/2023



SanAir ID Number
23030755
 FINAL REPORT
 6/16/2023 11:05:54 AM

Name: Hurt & Proffitt, Inc.
Address: 2524 Langhorne Road
 Lynchburg, VA 24501
Phone: 434-841-3893 (c)

Project Number: 20230842
P.O. Number: 20230842
Project Name: Glen Cove Elementary
Collected Date: 6/1/2023 - 6/2/2023
Received Date: 6/6/2023 10:20:00 AM

Analyst: Pisula, Nicholas | Mayes, Jean | Moore, Brandi | Magalis, Lane | Williams, Darien

Asbestos Bulk PLM EPA 600/R-93/116

SanAir ID / Description	Stereoscopic	Components		Asbestos Fibers
	Appearance	% Fibrous	% Non-fibrous	
HV-078A / 23030755-099 3" Joint/1st Floor, Insulation	Yellow Fibrous Homogeneous	97% Glass	3% Other	None Detected
LIJ-079A / 23030755-100 2" Line/1st Floor	Yellow Fibrous Heterogeneous	95% Glass	5% Other	None Detected
LEM-080A / 23030755-101 3" Line/1st Floor, Insulation	Yellow Fibrous Heterogeneous	95% Glass	5% Other	None Detected
LEM-080A / 23030755-101 3" Line/1st Floor, Mastic	White Non-Fibrous Homogeneous	5% Glass	91% Other	4% Chrysotile
LM-081A / 23030755-102 Line Mastic/1st Floor	Various Fibrous Heterogeneous	50% Cellulose 5% Glass	45% Other	< 1% Chrysotile
LIJ-082A / 23030755-103 1" Line/1st Floor	White Fibrous Heterogeneous	60% Cellulose 5% Glass	35% Other	None Detected
MG-083A / 23030755-104 Mortar And Grout/1st Floor, Mortar	White Non-Fibrous Heterogeneous		100% Other	None Detected
MG-083A / 23030755-104 Mortar And Grout/1st Floor, Grout	Brown Non-Fibrous Heterogeneous		100% Other	None Detected
CLLI-084A / 23030755-105 Ceiling Tile/Kitchen	Grey Fibrous Heterogeneous	80% Glass	20% Other	None Detected
TGM-085A / 23030755-106 Wall/Kitchen, Ceramic Tile	White Non-Fibrous Homogeneous		100% Other	None Detected

Analyst: *Nick Ellis*

Approved Signatory: *Johnathan Wilson*

Analysis Date: 6/16/2023

Date: 6/16/2023



SanAir ID Number
23030755
 FINAL REPORT
 6/16/2023 11:05:54 AM

Name: Hurt & Proffitt, Inc.
Address: 2524 Langhorne Road
 Lynchburg, VA 24501
Phone: 434-841-3893 (c)

Project Number: 20230842
P.O. Number: 20230842
Project Name: Glen Cove Elementary
Collected Date: 6/1/2023 - 6/2/2023
Received Date: 6/6/2023 10:20:00 AM

Analyst: Pisula, Nicholas | Mayes, Jean | Moore, Brandi | Magalis, Lane | Williams, Darien

Asbestos Bulk PLM EPA 600/R-93/116

SanAir ID / Description	Stereoscopic		Components		Asbestos Fibers
	Appearance	% Fibrous	% Non-fibrous		
TGM-085A / 23030755-106 Wall/Kitchen, Skim Coat	White Non-Fibrous Homogeneous		100% Other		None Detected
TGM-085A / 23030755-106 Wall/Kitchen, Plaster	Grey Non-Fibrous Heterogeneous		100% Other		None Detected
FLVCT-086A / 23030755-107 12" Floor Tile/1st Floor, Floor Tile	Green Non-Fibrous Homogeneous		100% Other		None Detected
FLVCT-086A / 23030755-107 12" Floor Tile/1st Floor, Mastic	Yellow Non-Fibrous Homogeneous		100% Other		None Detected
FLVCT-087A / 23030755-108 12" Floor Tile/1st Floor, Floor Tile	White Non-Fibrous Homogeneous		100% Other		None Detected
FLVCT-087A / 23030755-108 12" Floor Tile/1st Floor, Mastic	Yellow Non-Fibrous Homogeneous		100% Other		None Detected
CLLI-088A / 23030755-109 2x2 Ceiling Tile/Cafeteria	Tan Fibrous Heterogeneous	50% Cellulose 20% Glass	30% Other		None Detected
FLVCT-089A / 23030755-110 12" FT/1st Floor, Floor Tile	White Non-Fibrous Homogeneous		100% Other		None Detected
FLVCT-089A / 23030755-110 12" FT/1st Floor, Mastic	Yellow Non-Fibrous Homogeneous		100% Other		None Detected
FLVCT-089B / 23030755-111 12" FT/1st Floor, Floor Tile	White Non-Fibrous Homogeneous		100% Other		None Detected

Analyst: *Nick Ellis*

Approved Signatory: *Johnathan Wilson*

Analysis Date: 6/16/2023

Date: 6/16/2023



SanAir ID Number
23030755
 FINAL REPORT
 6/16/2023 11:05:54 AM

Name: Hurt & Proffitt, Inc.
Address: 2524 Langhorne Road
 Lynchburg, VA 24501
Phone: 434-841-3893 (c)

Project Number: 20230842
P.O. Number: 20230842
Project Name: Glen Cove Elementary
Collected Date: 6/1/2023 - 6/2/2023
Received Date: 6/6/2023 10:20:00 AM

Analyst: Pisula, Nicholas | Mayes, Jean | Moore, Brandi | Magalis, Lane | Williams, Darien

Asbestos Bulk PLM EPA 600/R-93/116

SanAir ID / Description	Stereoscopic		Components		Asbestos Fibers
	Appearance	% Fibrous	% Non-fibrous		
FLVCT-089B / 23030755-111 12" FT/1st Floor, Mastic	Yellow Non-Fibrous Homogeneous		100% Other		None Detected
CT-090A / 23030755-112 Ceiling Texture/1st Floor	White Non-Fibrous Homogeneous		100% Other		None Detected
FL-091A / 23030755-113 Flooring/1st Floor, Linoleum	Grey Non-Fibrous Homogeneous		100% Other		None Detected
FL-091A / 23030755-113 Flooring/1st Floor, Floor Tile	Grey Non-Fibrous Homogeneous		97% Other		3% Chrysotile
SC-092A / 23030755-114 Sink Coating/2nd Floor	Black Non-Fibrous Homogeneous		98% Other		2% Chrysotile
FLVCT-093A / 23030755-115 Floor Tile/1st Floor, Floor Tile	White Non-Fibrous Homogeneous		100% Other		None Detected
FLVCT-093A / 23030755-115 Floor Tile/1st Floor, Mastic	Tan Non-Fibrous Homogeneous		100% Other		None Detected
FLVCT-093B / 23030755-116 Floor Tile/1st Floor, Floor Tile	White Non-Fibrous Homogeneous		100% Other		None Detected
FLVCT-093B / 23030755-116 Floor Tile/1st Floor, Mastic	Tan Non-Fibrous Homogeneous		100% Other		None Detected
EDC-094A / 23030755-117 Exterior Door Caulking	Grey Non-Fibrous Homogeneous		100% Other		None Detected

Analyst: *Nick Ellis*

Approved Signatory: *Johnathan Wilson*

Analysis Date: 6/16/2023

Date: 6/16/2023



SanAir ID Number
23030755
 FINAL REPORT
 6/16/2023 11:05:54 AM

Name: Hurt & Proffitt, Inc.
Address: 2524 Langhorne Road
 Lynchburg, VA 24501
Phone: 434-841-3893 (c)

Project Number: 20230842
P.O. Number: 20230842
Project Name: Glen Cove Elementary
Collected Date: 6/1/2023 - 6/2/2023
Received Date: 6/6/2023 10:20:00 AM

Analyst: Pisula, Nicholas | Mayes, Jean | Moore, Brandi | Magalis, Lane | Williams, Darien

Asbestos Bulk PLM EPA 600/R-93/116

SanAir ID / Description	Stereoscopic Components		Asbestos Fibers
	Appearance	% Fibrous / % Non-fibrous	
EDC-094B / 23030755-118 Exterior Door Caulking	Grey Non-Fibrous Homogeneous	100% Other	None Detected
EDC-094C / 23030755-119 Exterior Door Caulking	Grey Non-Fibrous Homogeneous	100% Other	None Detected
ECT-095A / 23030755-120 Exterior Ceiling Texture	White Non-Fibrous Homogeneous	100% Other	None Detected
WC-096A / 23030755-121 Exterior Window Caulking	Grey Non-Fibrous Homogeneous	100% Other	None Detected
WC-096B / 23030755-122 Exterior Window Caulking	Grey Non-Fibrous Homogeneous	100% Other	None Detected
CT-097A / 23030755-123 Exterior Ceiling Texture	White Non-Fibrous Homogeneous	100% Other	None Detected
EJC-098A / 23030755-124 Exterior Expansion Joint	Black Non-Fibrous Homogeneous	100% Other	None Detected
EJC-098B / 23030755-125 Exterior Expansion Joint	Black Non-Fibrous Homogeneous	100% Other	None Detected
PM-063B / 23030755-126 1" Line/1st Floor			Not Analyzed
FL-091B / 23030755-127 Floor Tile/1st Floor, Linoleum	Grey Non-Fibrous Homogeneous	100% Other	None Detected

Analyst: *Nick Ellis*

Approved Signatory: *Johnathan Wilson*

Analysis Date: 6/16/2023

Date: 6/16/2023



SanAir ID Number
23030755
FINAL REPORT
6/16/2023 11:05:54 AM

Name: Hurt & Proffitt, Inc.
Address: 2524 Langhorne Road
Lynchburg, VA 24501
Phone: 434-841-3893 (c)

Project Number: 20230842
P.O. Number: 20230842
Project Name: Glen Cove Elementary
Collected Date: 6/1/2023 - 6/2/2023
Received Date: 6/6/2023 10:20:00 AM

Analyst: Pisula, Nicholas | Mayes, Jean | Moore, Brandi | Magalis, Lane | Williams, Darien

Asbestos Bulk PLM EPA 600/R-93/116

SanAir ID / Description	Stereoscopic	Components		Asbestos Fibers
	Appearance	% Fibrous	% Non-fibrous	
FL-091B / 23030755-127 Floor Tile/1st Floor, Floor Tile				Not Analyzed

Analyst: *Nick Lil*

Approved Signatory: *Johnathan Wilson*

Analysis Date: 6/16/2023

Date: 6/16/2023

Disclaimer

This report is the sole property of the client named on the SanAir Technologies Laboratory chain-of-custody (COC). Results in the report are confidential information intended only for the use by the customer listed on the COC. Neither results nor reports will be discussed with or released to any third party without our client's written permission. The final report shall not be reproduced except in full without written approval of the laboratory to assure that parts of the report are not taken out of context. The information provided in this report applies only to the samples submitted and is relevant only for the date, time, and location of sampling. The accuracy of the results is dependent upon the client's sampling procedure and information provided to the laboratory by the client. SanAir assumes no responsibility for the sampling procedure and will provide evaluation reports based solely on the sample(s) in the condition in which they arrived at the laboratory and information provided by the client on the COC, such as: project number, project name, collection dates, po number, special instructions, samples collected by, sample numbers, sample identifications, sample type, selected analysis type, flow rate, total volume or area, and start stop times that may affect the validity of the results in this report. Samples were received in good condition unless otherwise noted on the report. SanAir assumes no responsibility or liability for the manner in which the results are used or interpreted. This report does not constitute and shall not be used to claim product certification, approval, or endorsement by NVLAP, NIST, or any other U.S. governmental agencies and may not be certified by every local, state, and federal regulatory agencies.

Samples are held for a period of 60 days. Fibers smaller than 5 microns cannot be seen with this method due to scope limitations.

For NY state samples, method EPA 600/M4-82-020 is performed.

NYELAP Disclaimer:

Polarized- light microscopy is not consistently reliable in detecting asbestos in floor covering and similar non-friable organically bound materials. Quantitative transmission electron microscopy is currently the only method that can be used to determine if this material can be considered or treated as non-asbestos containing.

Asbestos Certifications

NVLAP lab code 200870-0

City of Philadelphia: ALL-460

PA Department of Environmental Protection Number: 68-05397

California License Number: 2915

Colorado License Number: AL-23143

Connecticut License Number: PH-0105

Massachusetts License Number: AA000222

Maine License Number: LB-0075, LA-0084

New York ELAP lab ID: 11983

Rhode Island License Number: PCM00126, PLM00126, TEM00126

Texas Department of State Health Services License Number: 300440

Commonwealth of Virginia 3333000323

Washington State License Number: C989

West Virginia License Number: LT000616

Vermont License: AL166318

Louisiana Department of Environmental Quality: 212253, Cert 05088

Revision Date: 8/14/2020



10501 Trade Ct., Suite 100
 N. Chesterfield, VA 23236
 804.897.1177 / 888.895.1177
 Fax 804.897.0070
 sanair.com

Asbestos
 Chain of Custody
 Form 140, Rev 7, 10/20/2022

SanAir ID Number
 23030755

Company: Hurt & Proffitt	Project #: 20230842	Collected by: Roy Wriston
Address: 5238 Valleypointe Parkway	Project Name: Glen Cove Elementary	Phone #: 540-588-0941
City, St., Zip: Roanoke, Virginia, 24019	Date Collected: 6-1-23/6-2/23	Fax #:
State of Collection: VA Account#:	P.O. Number: 20230842	Email: rwriston@handp.com

Bulk			Air			Soil		
ABB	PLM EPA 600/R-93/116	<input checked="" type="checkbox"/>	ABA	PCM NIOSH 7400	<input type="checkbox"/>	ABSE	PLM EPA 600/R-93/116 (Qual.)	<input type="checkbox"/>
	Positive Stop	<input checked="" type="checkbox"/>	ABA-2	OSHA w/ TWA*	<input type="checkbox"/>	Vermiculite		
ABEPA	PLM EPA 400 Point Count	<input type="checkbox"/>	ABTEM	TEM AHERA	<input type="checkbox"/>	ABB	PLM EPA 600/R-93/116	<input type="checkbox"/>
ABB1K	PLM EPA 1000 Point Count	<input type="checkbox"/>	ABATN	TEM NIOSH 7402	<input type="checkbox"/>	ABEPA3	PLM EPA 400 Point Count	<input type="checkbox"/>
ABBN	PLM EPA NOB**	<input type="checkbox"/>	ABT2	TEM Level II	<input type="checkbox"/>	ABCM	Cincinnati Method	<input type="checkbox"/>
ABBCH	TEM Chatfield**	<input type="checkbox"/>	Other:		<input type="checkbox"/>	Dust		
ABBTM	TEM EPA NOB**	<input type="checkbox"/>	New York ELAP			ABWA	TEM Wipe ASTM D-6480	<input type="checkbox"/>
ABQ	PLM Qualitative	<input type="checkbox"/>	ABEPA2	NY ELAP 198.1	<input type="checkbox"/>	ABDMV	TEM Microvac ASTM D-5755	<input type="checkbox"/>
			ABENY	NY ELAP 198.6 PLM NOB	<input type="checkbox"/>	Matrix Other		
			ABBNY	NY ELAP 198.4 TEM NOB	<input type="checkbox"/>			<input type="checkbox"/>
				Positive Stop	<input type="checkbox"/>			<input type="checkbox"/>

** Available on 24-hr. to 5-day TAT

Turn Around Times	3 HR (4 HR TEM) <input type="checkbox"/>	6 HR (8HR TEM) <input type="checkbox"/>	12 HR <input type="checkbox"/>	1 Day <input type="checkbox"/>
	<input type="checkbox"/> 2 Days	<input type="checkbox"/> 3 Days	<input type="checkbox"/> 4 Days	<input checked="" type="checkbox"/> 5 Days

Special Instructions: Analyze all layers

Sample #	Sample Identification/Location	Volume or Area	Sample Date	Flow Rate*	Start - Stop Time*
WLB-001A, B, C	Perimeter/2nd Floor				
CLLI-002A, B	2X4 Fissured Ceiling Tile/2nd Floor				
CLLI-003A, B	2X4 White Ceiling Tile/2nd Floor				
TSE-004A	1" Hard Elbow/2nd Floor				
TSV-005A	1" Hard Valve/2nd Floor				
TSL-006A	1" Line/2nd Floor				
TE-007A	2" Elbow/2nd Floor				
TV-008A	2" Valve/2nd Floor				
TL-009A	2" Line/2nd Floor				
CLLI-010A	2X4 Dotted Ceiling Tile/2nd Floor				
DLI-011A	HVAC Leg Insulation/2nd Floor				
FLVCT-012A	12" White Floor Tile/2nd Floor				

Relinquished by	Date	Time	Received by	Date	Time
<i>NW</i>	6-5-23	5:30pm	<i>IKM</i>	6/6/23	10:20am

If no technician is provided, then the primary contact for your account will be selected. Unless scheduled, the turnaround time for all samples received after 3 pm EST will be logged in the next business day. Weekend or holiday work must be scheduled ahead of time and is charged at 150% of the 3hr TAT or a minimum charge of \$150. A courier charge will be applied for same day and one-day turnaround times for offsite work. SanAir covers Ground and Next Day Air shipping. Shipments billed to SanAir with a faster shipping rate will result in additional charges.

23030755

Sample #	Sample Identification/Location	Volume or Area	Sample Date	Flow Rate*	Start - Stop Time*
FLVCT-013A	12" Blue Floor Tile/2nd Floor				
PE-014A	1" Elbow/2nd Floor				
PI-015A	1" Line/2nd Floor				
PE-016A	8" Elbow/2nd Floor				
DM-017A	Yellow Duct Mastic/2nd Floor				
WL-018A, B, C	Drywall/2nd Floor				
CBM-019A	Brown Cove Base/2nd Floor				
IWC-020A, B	Interior Window Caulk/2nd Floor				
PE-021A, B	5" Elbow/2nd Floor				
PW-022A	5" Line/2nd Floor				
PE-023A	2" Elbow/2nd Floor				
PIW-024A	2" Line/2nd Floor				
PE-025A, B	1" Elbow/2nd Floor				
PE-026A	6" Elbow/2nd Floor				
PE-027A	2.5" Elbow/2nd Floor				
RDF-028A, B	6" Roof Drain/2nd Floor				
FLVCT-029A	Tile under 12" Tile/2nd Floor				
PL-030A	2.5" Line/2nd Floor				
C-031A	Urinal Caulking/2nd Floor				
PE-032A	2.5" Elbow/2nd Floor				
PL-033A	6" Line/2nd Floor				
FLVCT-034A	9" White Floor Tile/2nd Floor				
DW-035A	Duct/2nd Floor				
DM-036A	Metal Duct Mastic/2nd Floor				
EJ-037A	Expansion Joint/2nd Floor				
FLVCT-038A	12" Green Floor Tile/2nd Floor				
FLVCT-039A	12" White Floor Tile/2nd Floor				
CM-040A	Carpet Mastic/2nd Floor				
PV-041A	5" Valve/2nd Floor				
WC-042A, B, C	Wall Coating/2nd Floor				
IDC-043A	Interior Door Caulk/2nd Floor				

Special Instructions	Analyze all layers
-----------------------------	--------------------

Relinquished by	Date	Time	Received by	Date	Time
<i>[Signature]</i>	6-5-23	5:30pm	<i>[Signature]</i>	6/6/23	10:20am

If no technician is provided, then the primary contact for your account will be selected. Unless scheduled, the turnaround time for all samples received after 3 pm EST will be logged in the next business day. Weekend or holiday work must be scheduled ahead of time and is charged at 150% of the 3hr TAT or a minimum charge of \$150. A courier charge will be applied for same day and one-day turnaround times for offsite work. SanAir covers Ground and Next Day Air shipping. Shipments billed to SanAir with a faster shipping rate will result in additional charges. Page 4 of 27

23030755

Form 140, Revision 1, 1/20/2017

Sample #	Sample Identification/Location	Volume or Area	Sample Date	Flow Rate*	Start - Stop Time*
CBM-044A	Black Cove Base/2nd Floor				
WPB-045A	Window Pane Bedding/2nd Floor				
TWC-046A	Window Caulking/2nd Floor				
PE-047A	6" Elbow/Gym				
PL-048A	6" Line/Gym				
LP-049A	6" Line/Gym				
PF-050A	Floor/Gym				
CBM-051A	Cove Base/Gym				
WCP-052A	Patch/Gym				
EJC-053A, B	Expansion Joint/Gym				
V-054A, B	Wall and Above Ceiling/1st Floor				
WTB-055A	Wall Tile Backing/Gym				
SDM-056A, B	Duct/Gym				
SC-057A	Curtain/Gym				
LF-058A	Flooring/1st Floor				
FC-059A	Water Fountain Caulking/1st Floor				
CLLI-060A	2X4 Fissured Ceiling Tile/1st Floor				
IWC-061A, B	Interior Window Caulking/1st Floor				
DC-062A	Interior Door Caulking/1st Floor				
PM-063A, B	1" Line/1st Floor				
FLVCT-064A	9" White with gray streaks FT/1st Floor				
CLLI-065A	2X4 White Fissured CT/1st Floor				
PE-066A	1" Elbow/1st Floor				
WC-067A	Wall Caulking/1st Floor				
PEM-068A	6" Elbow/1st Floor				
P-069A, B, C	Plaster Stairwells/1st Floor				
SBC-070A	Sink Coating/1st Floor				
BLM-071A	1.5" Line/1st Floor				
BSC-072A	Sink Caulking/1st Floor				
HE-073A, B	2.5" Elbow/1st Floor				
CBM-074A	Tan/Blue Cove Base/1st Floor				

Special Instructions

Analyze all layers

Relinquished by	Date	Time	Received by	Date	Time
<i>[Signature]</i>	6-5-23	5:30pm	<i>[Signature]</i>	6/6/23	10:30am

If no technician is provided, then the primary contact for your account will be selected. Unless scheduled, the turnaround time for all samples received after 3 pm EST will be logged in the next business day. Weekend or holiday work must be scheduled ahead of time and is charged at 150% of the 3hr TAT or a minimum charge of \$150. A courier charge will be applied for same day and one-day turnaround times for offsite work. SanAir covers Ground and Next Day Air shipping. Shipments billed to SanAir with a faster shipping rate will result in additional charges. Page of 39

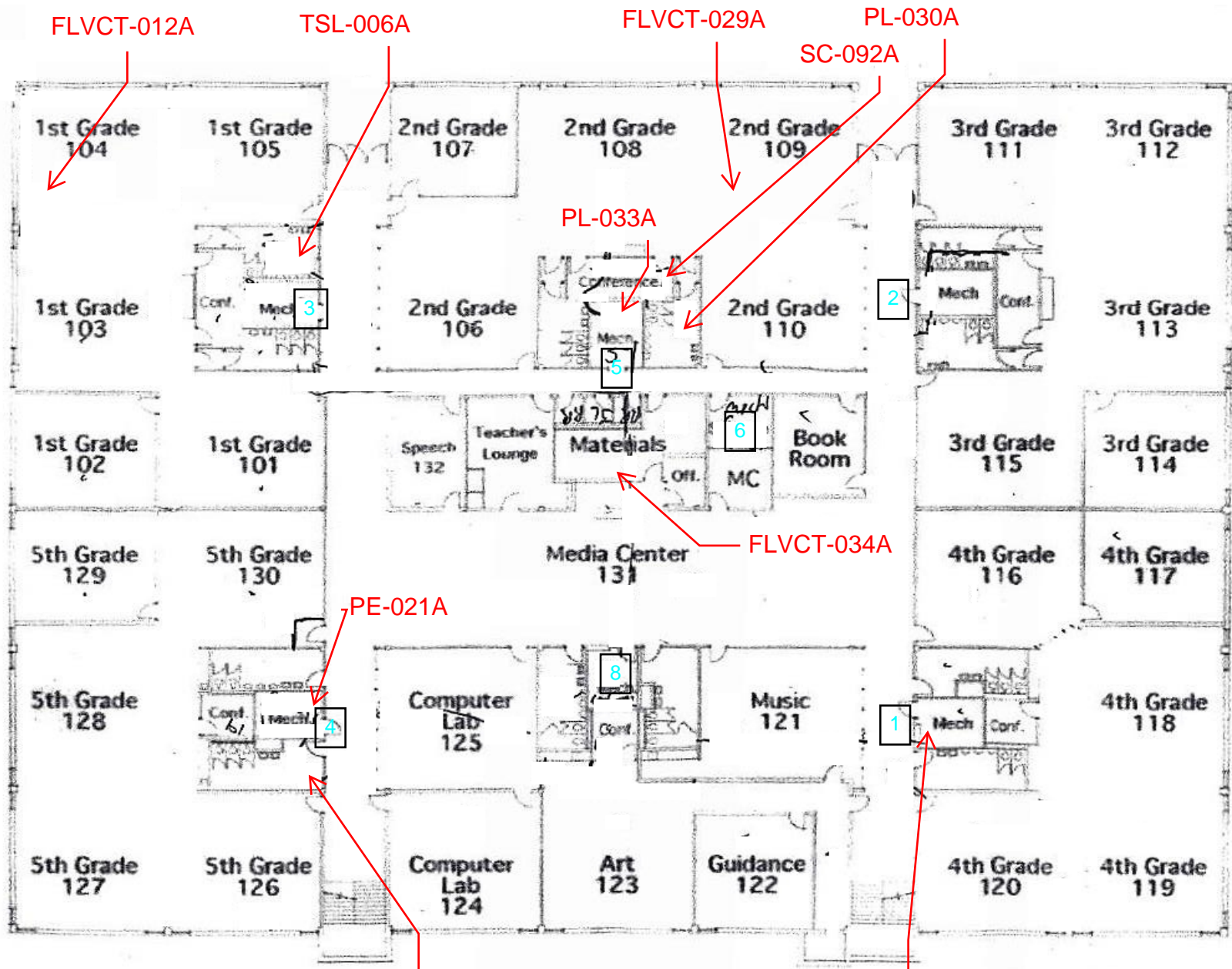
23030755

Sample #	Sample Identification/Location	Volume or Area	Sample Date	Flow Rate*	Start - Stop Time*
CBM-075A	Black Cove Base/1st Floor				
WL-076A, B, C	Drywall/1st Floor				
DWFS-077A	1st Floor				
HV-078A	3" Joint/1st Floor				
LIJ-079A	2" Line/1st Floor				
LEM-080A	3" Line/1st Floor				
LM-081A	Line Mastic/1st Floor				
LIJ-082A	1" Line/1st Floor				
MG-083A	Mortar and Grout/1st Floor				
CLLI-084A	Ceiling Tile/Kitchen				
TGM-085A	Wall/Kitchen				
FLVCT-086A	12" Green Floor Tile/1st Floor				
FLVCT-087A	12" White Floor Tile/1st Floor				
CLLI-088A	2X2 Ceiling Tile/Cafeteria				
FLVCT-089A, B	12" White with blue FT/1st Floor				
CT-090A	Ceiling Texture/1st Floor				
FL-091A, B	Brown Flooring/1st Floor				
SC-092A	Sink Coating/2nd Floor				
FLVCT-093A, B	Floor Tile/1st Floor				
EDC-094A, B, C	Exterior Door Caulking				
ECT-095A	Exterior Ceiling Texture				
WC-096A, B	Exterior Window Caulking				
CT-097A	Exterior Ceiling Texture				
EJC-098A, B	Exterior Expansion Joint				

Special Instructions	Analyze all layers
----------------------	--------------------

Relinquished by	Date	Time	Received by	Date	Time
<i>[Signature]</i>	6-5-23	5:30pm	<i>[Signature]</i>	6/6/23	10:20am

If no technician is provided, then the primary contact for your account will be selected. Unless scheduled, the turnaround time for all samples received after 3 pm EST will be logged in the next business day. Weekend or holiday work must be scheduled ahead of time and is charged at 150% of the 3hr TAT or a minimum charge of \$150. A courier charge will be applied for same day and one-day turnaround times for offsite work. SanAir covers Ground and Next Day Air shipping. Shipments billed to SanAir with a faster shipping rate will result in additional charges. Page 44 of 27



RED INDICATES APORXIMATE POSITIVE ASBESTOS SAMPLE LOCATION

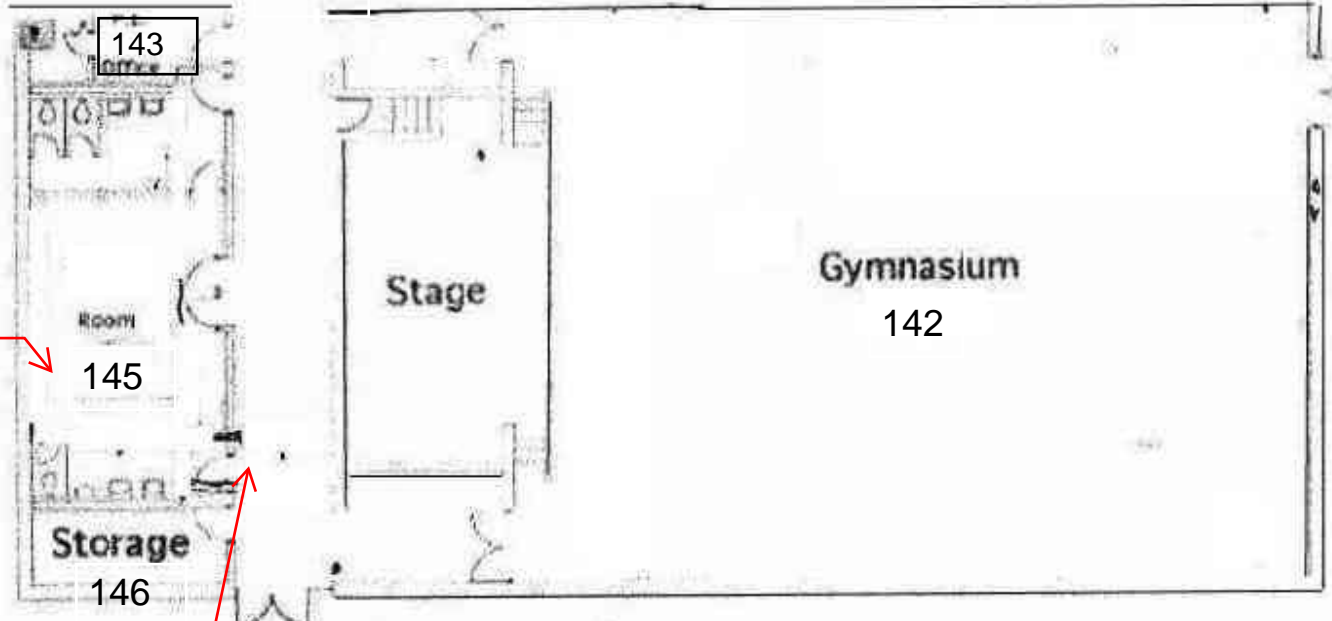
PE-026A, PE-027A

SECOND FLOOR

PE-021B

8 BLUE NUMBER IS MECH ROOM

To
Main ↑

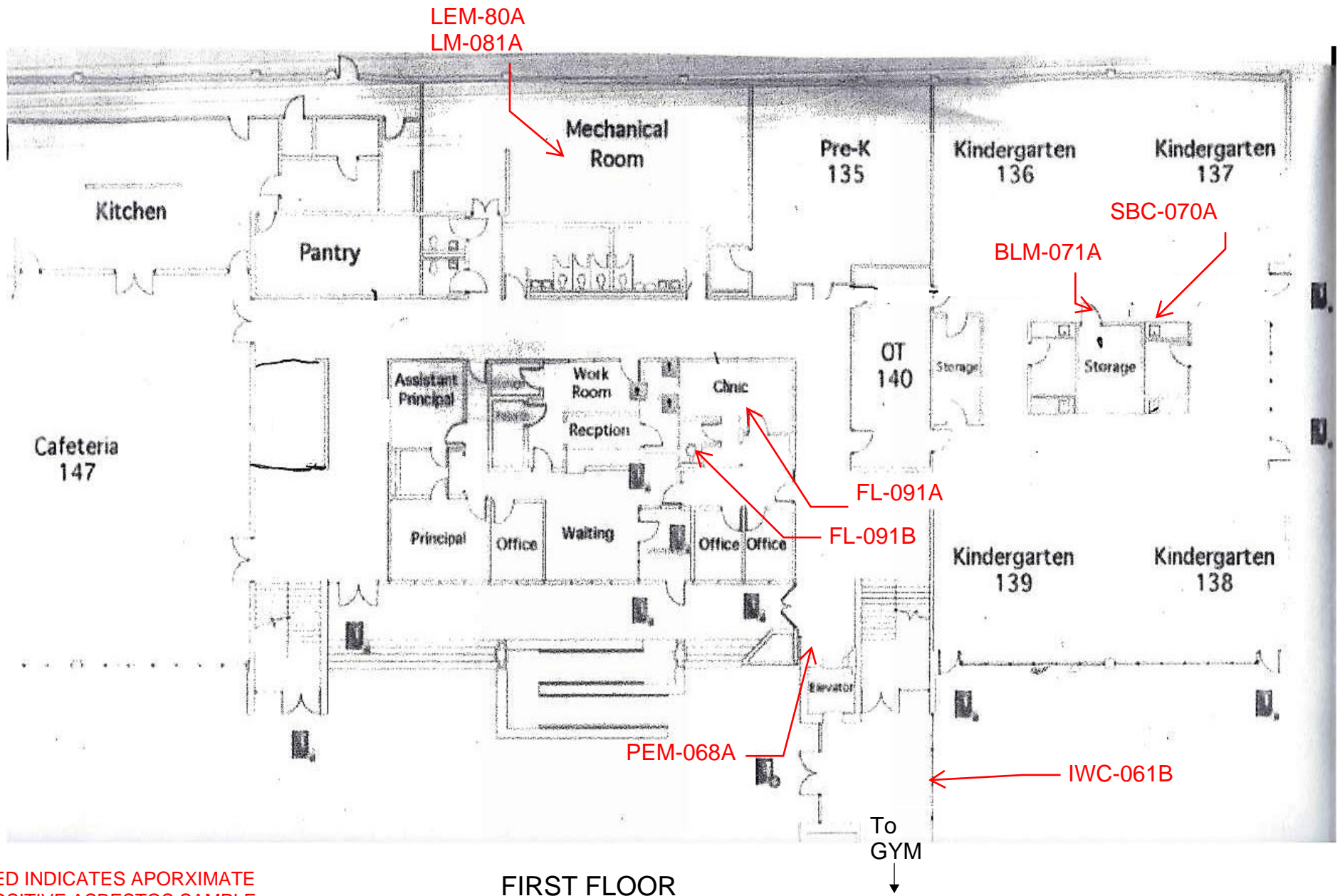


FLVCT-064A

PM-063A

RED INDICATES APORXIMATE
POSITIVE ASBESTOS SAMPLE
LOCATION

FIRST FLOOR



RED INDICATES APOXIMATE
 POSITIVE ASBESTOS SAMPLE
 LOCATION

FIRST FLOOR