

New Principals: Putting the “P” in Partnership

New Principal Session: In this session you will learning about working with SSD and special education services, resources and supports.

June 25, 2024



Network:

Password: SSDC0mmun1Ty

Presenters



Dr. Tami Yates
Executive Director of Partner Districts



Ms. Shinita Jones
Special Education Director, Jennings

Let's Get Started!

- (Add Mentimeter info the night before)

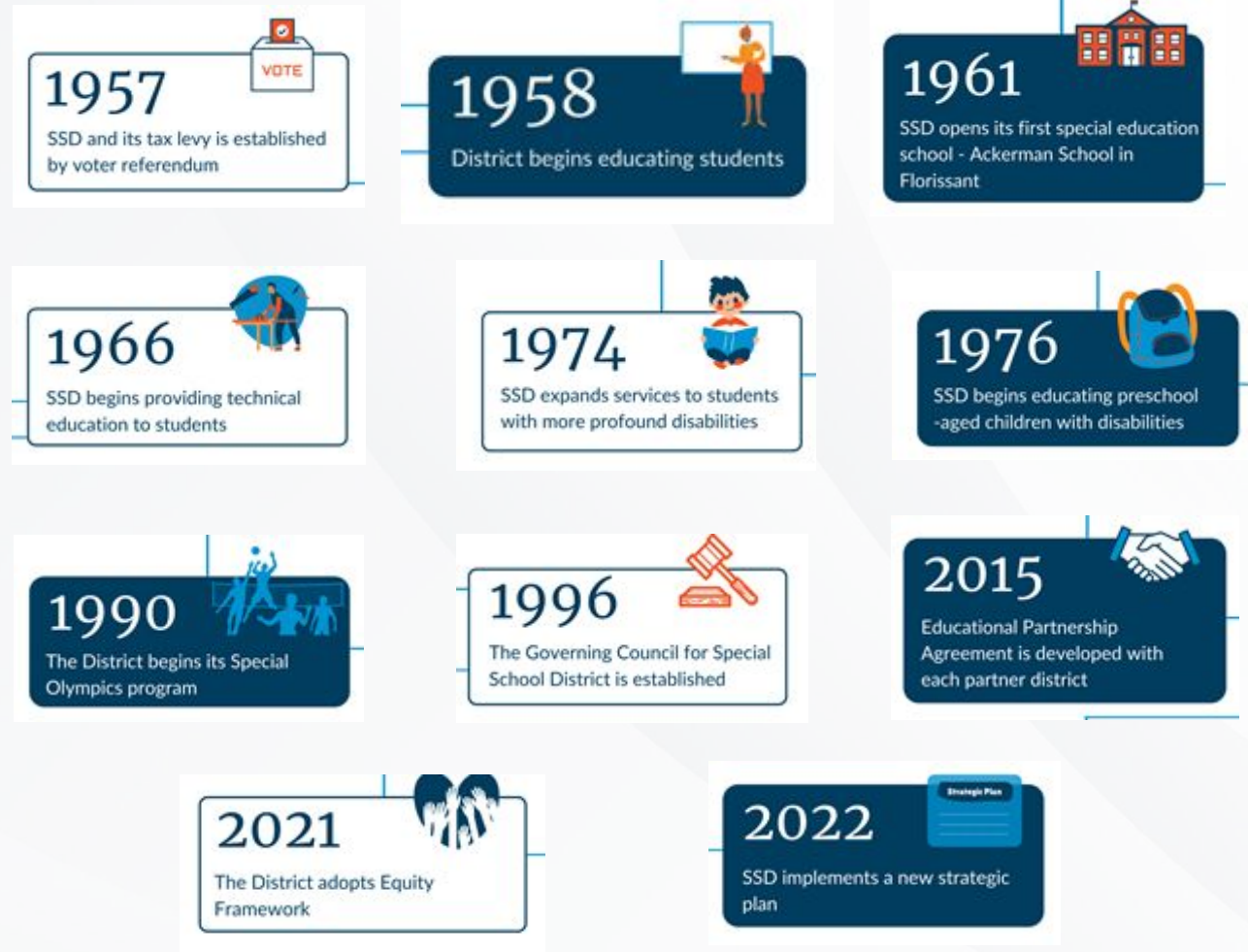
Outcomes

- What is SSD? History and background.
- How does SSD work in my district/building and what is my role?
- How do I partner with SSD and my SSD admin team?
- Partnership Agreement
- What resources can I access as a partner district administrator?
- What information/connections will I walk away with?

History of SSD

Special School District of St. Louis County (SSD) was **formed in December 1957** after St. Louis County voters overwhelmingly approved a **referendum** establishing a **countywide local school district to support the educational needs of children with disabilities.**

At the same time, voters indicated the value they placed on educating children with disabilities by including in the referendum a **countywide tax levy** to fund the District. This investment by the community provides a **separate dedicated funding source** to support SSD's programs and services. SSD's unique status as a **countywide public school district with its own tax base** provides stability as well as equal access to a quality education for students across the county.



Overview of SSD

SSD Mission & Vision

Special School District of St. Louis County, the largest specialized education provider in the state, equips and empowers students of all learning abilities to excel to their greatest potential. This is realized through an inclusive, collaborative approach, supported by our comprehensive resources and deep expertise - all of which is centered on each student's unique needs.

Mission

To support and empower students of all learning abilities to excel to their greatest potential.

Vision

All students realize their full potential in life and learning.

Values

Equity • Commitment • Collaboration



SPECIALIZED FOR SUCCESS



SSD At A Glance



24,728 STUDENTS



265 SCHOOLS
across St. Louis County

our students

648 Special Education
20,289 Partner Districts
868 Early Childhood
1,410 Career & Technical Education
953 SNAP (avg)
556 Homebound (avg)
47 Courts (avg)

47%
Caucasian

41%
African-American

6%
Hispanic

2%
Multi-Race

2%
Asian

1%
Native American/
Hawaiian/Pacific Islander



Attend school in their home district



Receive free/reduced price lunches

our staff

477 Part-time staff
5,296 Full-time staff
76% Hold Advanced Degrees
13 Average years of teaching experience



236 Administrative-level staff
1,743 Paraprofessional-level staff
2,747 Teacher-level staff
470 Operational staff
477 Other staff members

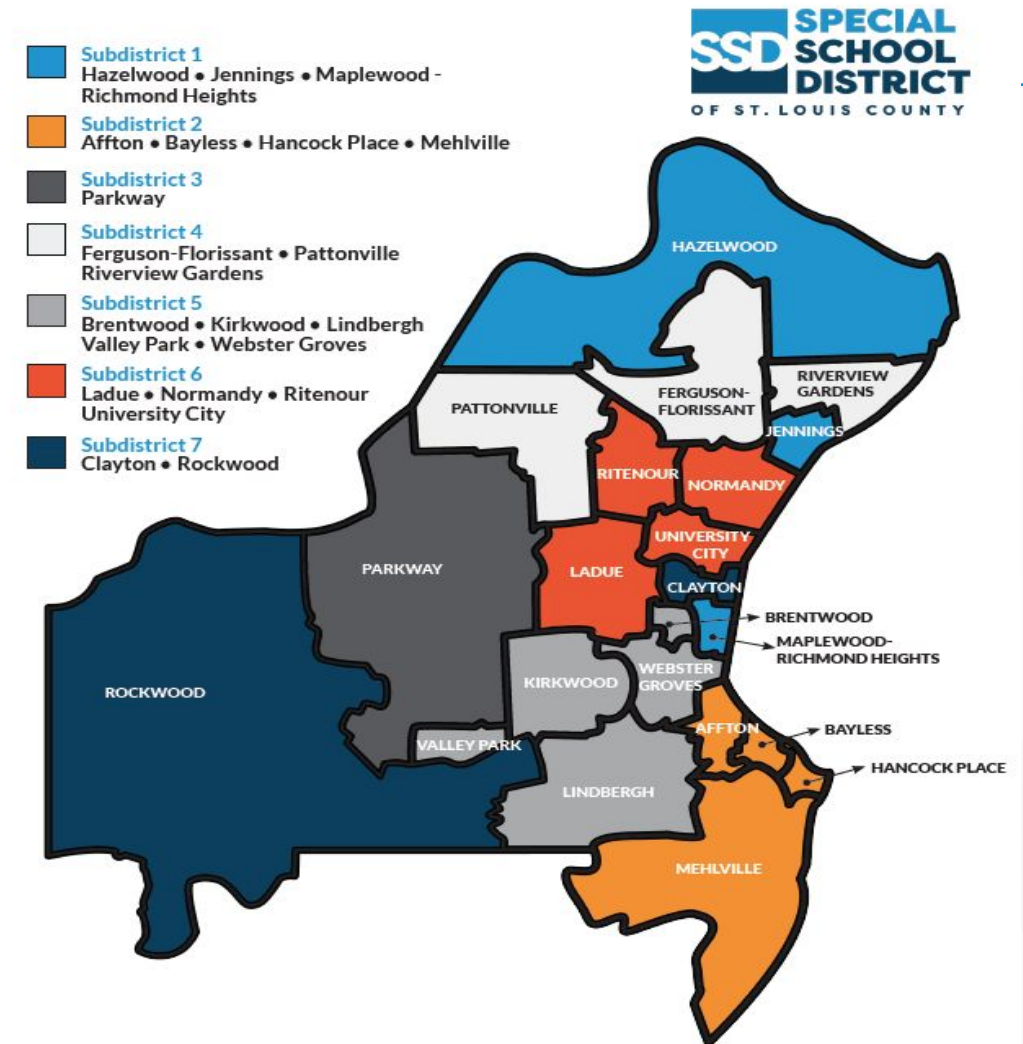
our schools



Partner Districts

SSD provides special education services to students in a variety of placements, which are governed by the federal Individuals with Disabilities Education Act (IDEA). Services are based entirely on a student's Individualized Education Plan (IEP).

More than 97 percent of students who receive services from SSD staff attend a school in the school district in which they live. This means that the vast majority of special education services provided by SSD are delivered by SSD staff in 265 schools in 22 public school districts in St. Louis County. Students with more significant disabilities are educated in one of [SSD's five special education schools](#).



SPECIAL SCHOOL DISTRICT • 12110 CLAYTON ROAD • TOWN & COUNTRY, MO 63131
314.989.8100 • 314.989.8552 TTY

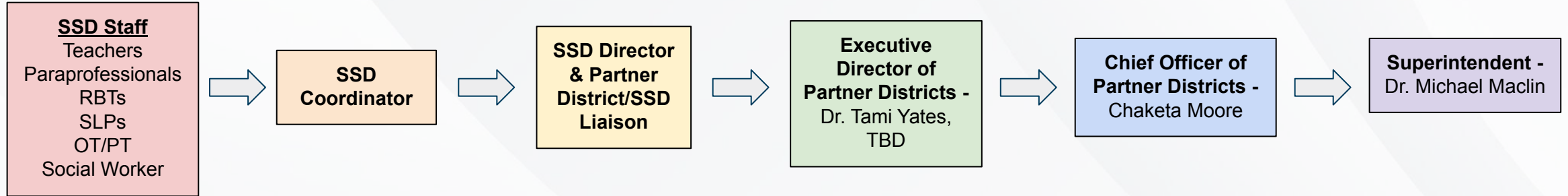
SSD Stakeholders in Partner Districts

Your partner district and school will be supported by the following stakeholders from SSD:

- Administrators:
 - Special Education Director (partner district-wide)
 - Special Education Coordinator (partner district-wide with assigned schools)
- Certified Staff:
 - SSD Instructional Coach (partner district-wide)
 - Special Education Teacher(s)
 - Speech-Language Pathologist(s)
 - Occupational & Physical Therapist(s)
- Support Staff (as appropriate)
 - Paraprofessional(s)
 - Registered Behavior Technician(s)
- Additional Staff As Needed



Chain of Support



Partnership Agreement (revised May 2022)

Background

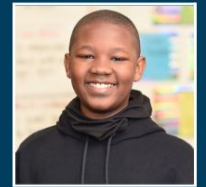
Special School District (SSD) of St. Louis County, the largest specialized education provider in the state, equips and empowers students of all learning abilities to excel to their greatest potential. This is realized through an inclusive, collaborative approach, supported by our comprehensive resources and deep expertise - all of which is centered on each student's unique needs.

SSD provides special education services for all St. Louis County students with disabilities and career technical education for area high school students. SSD's status as a public school district with its own tax levy provides St. Louis County and Partner Districts with a unique educational delivery system for special education and career technical education. Another unique aspect of SSD is its governing structure. The SSD Governing Council, which is made up of one member of the Board of Education from each of the 22 Partner Districts, approves SSD's budget and its Comprehensive School Improvement Plan (CSIP), and elects the members of the SSD Board of Education.

This governance structure coupled with a distinctive educational delivery system provides many opportunities for partnership among SSD and Partner Districts.

Educational Partnership Agreement of St. Louis County

REVISED JULY 2022



Categories

- 1: Staffing**
- 2: Teaching, Learning & Accountability**
- 3: Collaboration of Responsibilities & Resources**
- 4: Student Services**
- 5: Data & Technology**
- 6: Transportation**
- 7: Career and Technical Education (CTE)**

Check-In

- (Add Mentimeter info the night before)

Resources and Supports

THE WHAT:

[Partnership Agreement](#)
[Multi-Tiered Systems of Support](#)
[Tiered Models & Professional Learning Plans](#)
[Resources for Literacy](#)
[Resources for Numeracy](#)
[Resources for Social Emotional Learning](#)
[Special Education Process/FA & BIP](#)
[Co-Teaching](#)
[Classroom Universal Supports](#)
[Autism & Applied Behavior Analysis](#)
[Data Team Process](#)
[Career & Technical Education/Programming](#)
[Assistive Technology/Augmentative Communication](#)
[Early Childhood Special Education](#)
[Diversity, Equity, & Inclusion](#)
[Family and Community Engagement](#)

THE WHO:

[Partner District/SSD Contacts](#)
[Multi-Tiered Systems of Supports Facilitator](#)
[Literacy Coaches](#)
[Math Coaches](#)
[Social-Emotional Effective Practice Specialist](#)
[Autism Effective Practice Specialist](#)
[Paraprofessional Facilitator](#)
[Applied Behavior Analyst \(ABA\) Associates/Coordinators](#)
[Measurement & Assessment Coaches](#)
[Diversity, Equity, Inclusion, & Accessibility](#)
[FACE](#)

Check-Out

What is a wondering you have about SSD and/or our partnership? Themes:

-

What is a worry you have going into your year/role as it relates to all things special education? Themes:

-

Thank you ~

For your time today ~

For your participation today~

For your continued partnership~

For your work with students every day~