



**March 2024**

## **ARPA Monthly Progress Report**

for

# **East Ramapo Central School District**

Time Period: 3/19/2024 - 4/1/2024

Issued on 4/1/24 by:

**Jacobs Construction Management Services**

## Table of Contents

### **1. Construction Update**

- a. **ARPA Project Overview Statement & Description**
- b. **ARPA Schedule Overview (Level 3, 4 & 6) v.10 (DRAFT Update 4-1-24)**
- c. **Remaining Construction Sequence & Schedule Overview (DRAFT Update 4-1-24)**
- d. **ARPA Construction – Financial Update (DRAFT Update 4-1-24)**
- e. **Phase 1A – MEP Upgrades**  
Equipment procured for Margetts and Kakiat and stored in a Warehouse in Mahwah, NJ.
- f. **Phase 1B – Doors/Hardware & Window Replacement**  
Interior door installation is in progress at Kakiat & punch listing in progress at Elmwood, and Margetts.  
Window replacements starting at Elmwood the week of 4/8/24.
- g. **Phase 1B – ADA Toilet Room & Select Drinking Fountain Upgrades**  
Submittals have been returned and approved and contractors can proceed.
- h. **PHASE 3A - Flooring Abatement & Replacement Work + UV Casework/Flooring at Elmwood**  
Kakiat Casework installation complete with punch list items remaining.  
Remaining Casework Removal, Abatement, Flooring at Elmwood contracted for Summer 2024.
- i. **PHASE 3B – Doors/Hardware Replacement**  
Materials being shipped with installation scheduled to begin at Fleetwood on April 1<sup>st</sup>.
- j. **PHASE 3C – ADA Toilet Room & Select Drinking Fountain Upgrades**  
Submittals have been returned and approved and contractors can proceed.
- k. **PHASE 3D – Window Replacement**  
Shop drawings are being submitted, reviewed, and approved with material ordering to follow.

### **2. Health and Safety Update**

- a. **Project Safety Reports – Reports indicating no incidents to-date.**

### **3. Appendices**

- a. **Phase 1A – Change Orders & Payment Application - Status Logs**
- b. **Phase Kitchen Hoods - Submittal, Change Orders & Payment Application - Status Logs**
- c. **Phase 1A MEP – RFI, Submittal - Status Logs**
- d. **Phase 3A – RFI, Submittal - Status Logs**



## 1. Construction Update

### a. ARPA Project Overview Statement

**Project Statement:**

*The East Ramapo Central School District has embarked on a major district-wide capital improvement project through the American Rescue Plan Act of 2021 (ARPA) funding, expanding the program in the following areas:*

- 1) District-wide indoor air quality & select thermal envelope improvements*
- 2) District-wide security improvements*
- 3) Hazardous materials removals & replacements*
- 4) District-wide ADA improvements*
- 5) Other energy related saving measures*

**Project Areas Expanded:**

**1. Indoor Air Quality & Thermal Envelope Improvements:**

**MEP Upgrades**

- Major Mechanical upgrades at Two (2) Schools

**Window Replacements**

- Entire or partial at Ten (10) Schools

**2. Security Improvements:**

**Doors & Hardware Replacements**

- Up to Thirteen (13) Schools

**3. Hazardous Materials Removals & Replacements:**

**Flooring Abatement & Replacements**

- Eleven (11) Schools (+/-) 720,000 sf

**Kitchen Hood Abatement & Replacements**

- Eleven (11) Schools

**4. ADA Improvements:**

**ADA Upgrades**

- At Thirteen (13) Schools

### b. ARPA Project Description

**PHASE 1:**

**EMERGENCY PROJECT: Flooring Abatement & Replacements - (state contract)**

- Spring Valley High School +/- 120,000 sf

**PHASE 1A:**

**Flooring Abatement & Replacements - (state contract)**



- **Four (4) Schools +/- 300,000 sf**
  - Elmwood Elementary School
  - Kakiat Elementary School
  - Margetts Elementary School
  - Pomona Middle School
- **Remaining Flooring & UV Casework**
  - Elmwood Elementary School

**Kitchen Hood Abatement & Replacements - (multi-prime contracts)**

- **Phase #1 2022: Six (6) Schools**
  - Chestnut Ridge Elementary School
  - Elmwood Elementary School
  - Hempstead Elementary School
  - Kakiat Elementary School
  - Pomona Middle School
  - Margetts Elementary School
- **Phase #2 2023: Five (5) schools**
  - Eldorado Elementary School
  - Fleetwood Elementary School
  - Grandview Elementary School
  - Summit Park Elementary School
  - Lime Kiln Elementary School

**MEP Upgrades - (OMNIA Direct Procurement Contract)**

- Kakiat ES & Margetts ES

**PHASE 1B:**

- **ADA Upgrades - (TIPS Direct Procurement Contract)**
  - Ramapo High School
  - Spring Valley High School
  - Elmwood Elementary School
  - Kakiat Elementary School
  - Margetts Elementary School
- **Doors & Hardware Replacements - (TIPS Direct Procurement Contract)**
  - Ramapo High School
  - Spring Valley High School
  - Elmwood Elementary School
  - Kakiat Elementary School
  - Margetts Elementary School
- **Window Replacements - (TIPS Direct Procurement Contract)**
  - Margetts Elementary School
  - Elmwood Elementary School
  - Kakiat Elementary School



**PHASE 3A:**

**Flooring Abatement & Replacements - (Bayshore Direct Procurement Contract)**

- Seven (7) Schools
  - Eldorado Elementary School
  - Fleetwood Elementary School
  - Grandview Elementary School
  - Summit Park Elementary School
  - Hempstead Elementary School
  - Lime Kiln Elementary School
  - Elmwood Elementary School
- Includes Piping covers, Fixed & Movable Casework and Windowsills

**PHASE 3B:**

**Doors & Hardware Replacements - (TIPS Direct Procurement Contract)**

- Eight (8) Schools
  - Chestnut Ridge Middle School
  - Fleetwood Elementary School
  - Grandview Elementary School
  - Summit Park Elementary School
  - Hempstead Elementary School
  - Lime Kiln Elementary School
  - Pomona Middle School
  - Eldorado Elementary School

**PHASE 3C:**

**ADA Upgrades - (TIPS Direct Procurement Contract)**

- Eight (8) Schools
  - Chestnut Ridge Middle School
  - Fleetwood Elementary School
  - Grandview Elementary School
  - Summit Park Elementary School
  - Hempstead Elementary School
  - Lime Kiln Elementary School
  - Pomona Middle School
  - Eldorado Elementary School

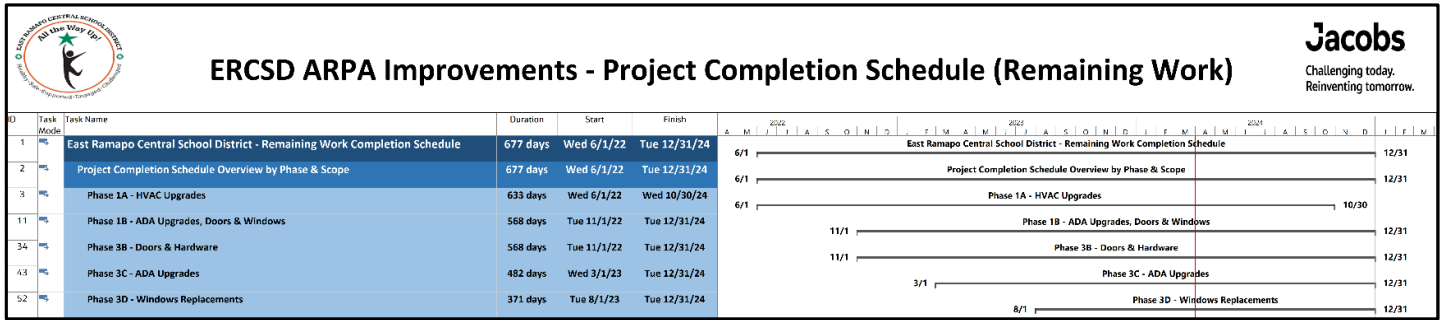
**PHASE 3D:**

**Window Replacements - (TIPS Direct Procurement Contract)**

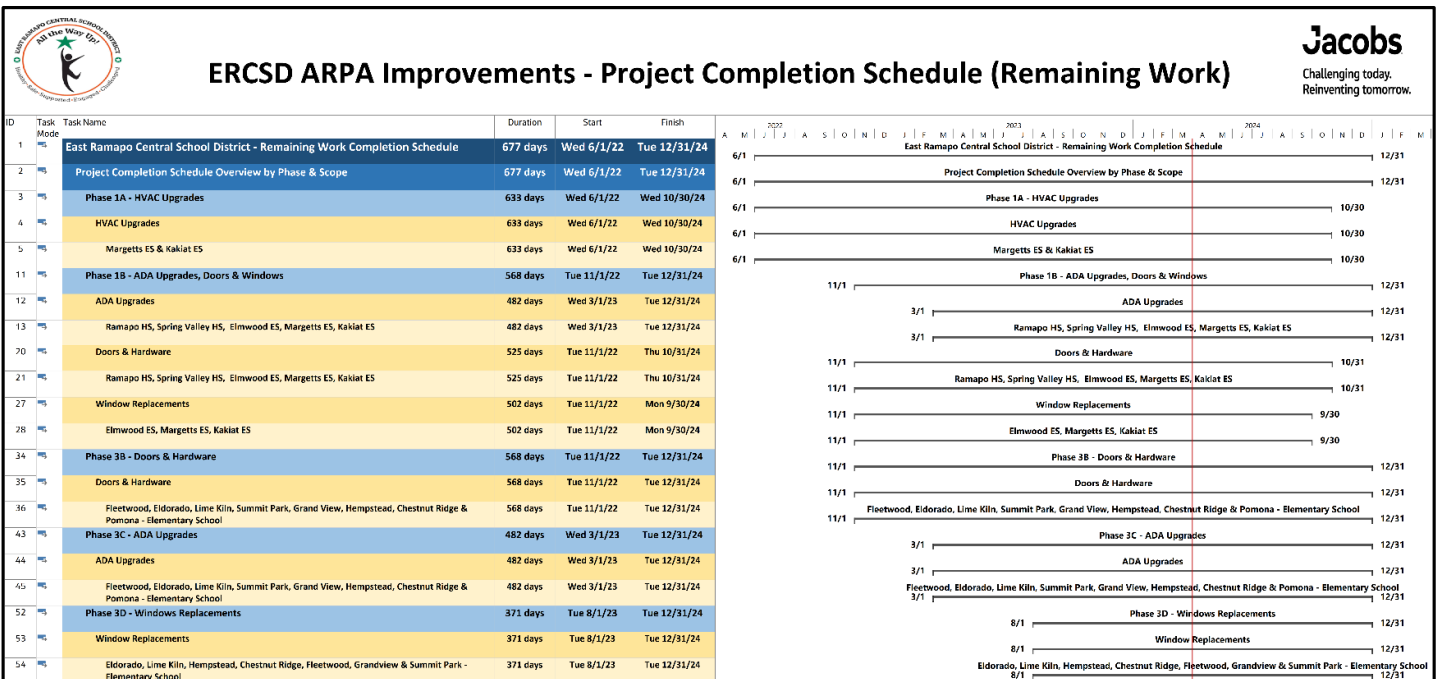
- Seven (7) Schools
  - Chestnut Ridge Middle School
  - Fleetwood Elementary School
  - Grandview Elementary School
  - Summit Park Elementary School
  - Hempstead Elementary School
  - Lime Kiln Elementary School
  - Eldorado Elementary School



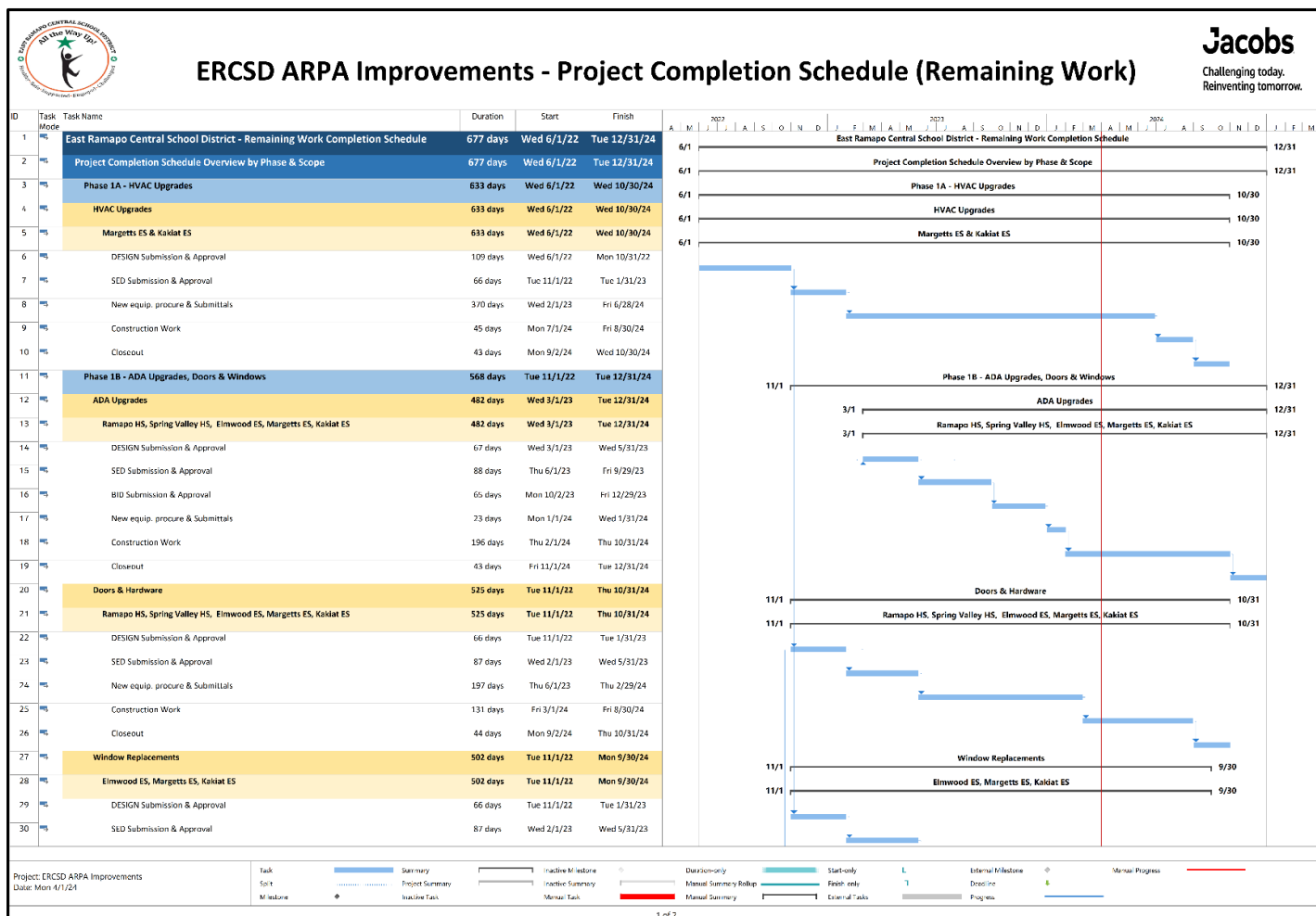
## b. Schedule Overview (Level 3) – v.10. DRAFT Update (4/1/24)



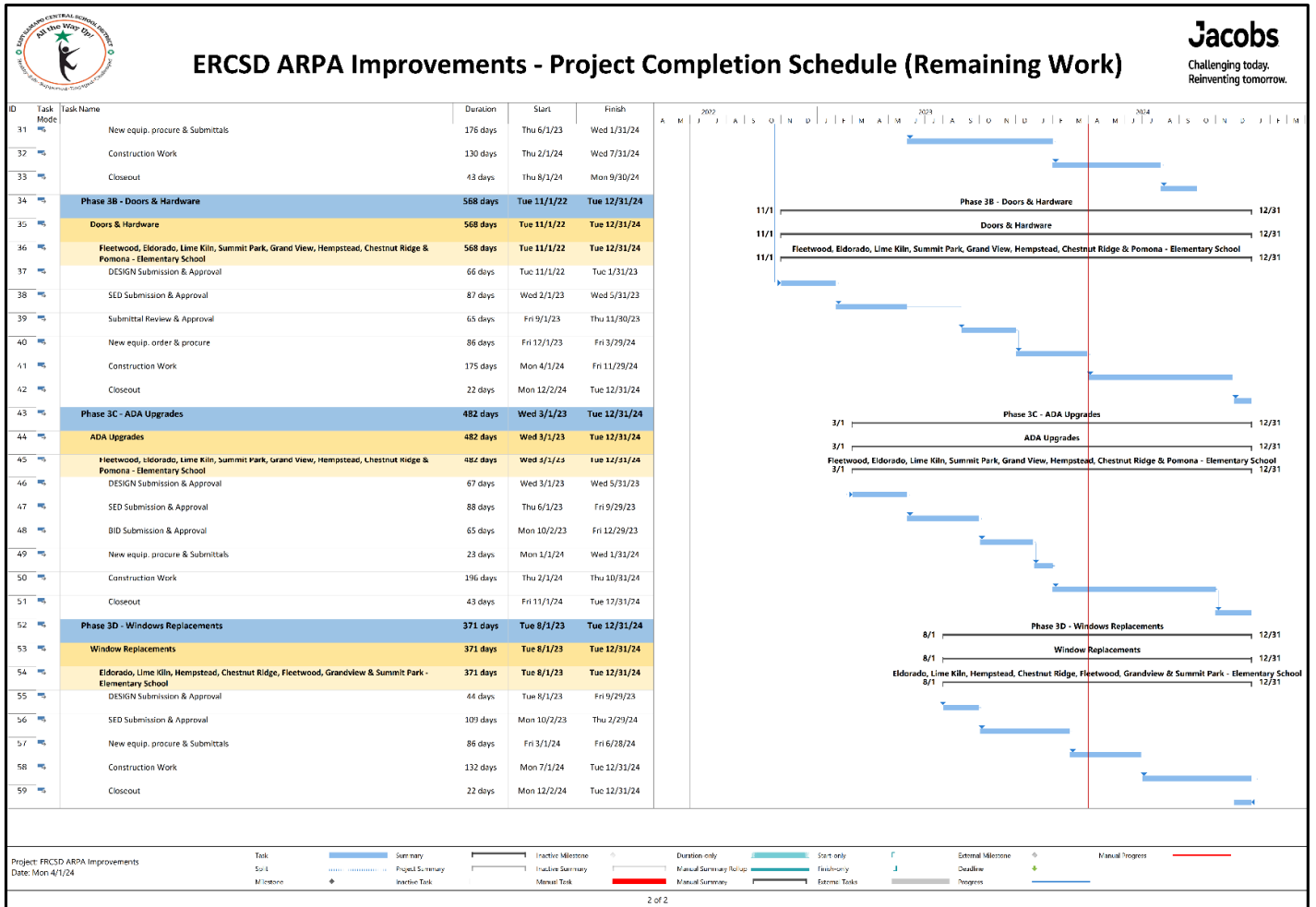
## b. ARPA Schedule Overview (Level 5) – v.10. DRAFT Update (4/1/24)



## b. Schedule Overview (Level 6) – v10. DRAFT Update (4/1/24) – (Page 1 of 2)



## b. Schedule Overview (Level 6) – v.10. DRAFT Update (4/1/24) – (Page 2 of 2)







### c. ARPA Project - Projected Construction Work Areas - 2024 - DRAFT

| ERCSD ARPA - 2024 Construction Sequence & Schedule Overview |   |        |        |        |        |        |                               |        |   |        |        |        | DRAFT  |
|---|---|--------|--------|--------|--------|--------|-------------------------------|--------|---|--------|--------|--------|--------|
| 4/1/2024  |   |        |        |        |        |        |                               |        |   |        |        |        |        |
| School  | Work Description  | Feb-24 | Mar-24 | Apr-24 | May-24 | Jun-24 | Jul-24                        | Aug-24 | Sep-24  | Oct-24 | Nov-24 | Dec-24 | Jan-25 |
| Elmwood   |   |        |        |        |        |        | vacant school                 |        |   |        |        |        |        |
|   | Doors   | 2      |        |        |        |        |                               |        |   |        |        |        |        |
| Abatement   | Windows   |        |        | 2      | 2      |        |                               |        |   |        |        |        |        |
|   | ADA + fountains   |        |        | 2      | 2      |        | 1                             | 1      |   |        |        |        |        |
| BOE 1/2/24  | MEP Casework  |        |        |        |        |        | 1                             | 1      |   |        |        |        |        |
| Margetts  |   |        |        |        |        |        | vacant school                 |        |   |        |        |        |        |
|   | Doors (ship 2/19)   |        | 2      |        |        |        |                               |        |   |        |        |        |        |
| Abatement   | Windows   |        |        |        |        | 2      | 2                             |        |   |        |        |        |        |
| BOE 1/16/24   | ADA + fountains   |        |        |        |        |        | 1                             | 1      |   |        |        |        |        |
|   | Unit Ventilator Replacements  |        |        |        |        |        | 1                             | 1      | 2   |        |        |        |        |
| Kakiat  |   |        |        |        |        |        | vacant school                 |        |   |        |        |        |        |
| (district work)   | Gym Floor Replacement   |        |        |        |        |        | 1                             | 1      |   |        |        |        |        |
|   | Doors   |        |        | 2      | 2      |        |                               |        |   |        |        |        |        |
| No Abatement  | Windows (confirm delivery date)   |        |        |        | 2      | 2      |                               |        |   |        |        |        |        |
| BOE 1/16/24   | ADA + fountains   |        |        |        |        |        | 1                             | 1      |   |        |        |        |        |
|   | Unit Ventilator Replacements  |        |        |        |        |        | 1                             | 1      | 2   |        |        |        |        |
| Ramapo  |   |        |        |        |        |        | occupied school - Summer 2024 |        |   |        |        |        |        |
| (district work)   | Gym Floor Replacement   |        |        |        |        |        | 1                             | 1      |   |        |        |        |        |
|   | Doors   |        |        |        | 2      | 2      |                               |        |   |        |        |        |        |
| BOE 1/16/24   | ADA + fountains   |        |        | 2      | 2      |        | 1                             | 1      | NOTE: Partial Occupancy - Nurse to Class 120 for Summer School. |        |        |        |        |
| Spring Valley   |   |        |        |        |        |        | vacant school                 |        |   |        |        |        |        |
| (district work)   | Gym Floor Replacement   |        |        |        |        |        | 1                             | 1      |   |        |        |        |        |
|   | Doors   |        |        |        |        |        | 1                             | 1      |   |        |        |        |        |
| BOE 1/16/24   | ADA + fountains + lift  |        |        |        |        |        | 1                             | 1      |   |        |        |        |        |
| Pomona  |   |        |        |        |        |        | vacant school                 |        |   |        |        |        |        |
| (District Work)   | Gym Floor Replacement   |        |        |        |        |        | 1                             | 1      |   |        |        |        |        |
|   | Doors   |        |        |        |        |        |                               | 2      |   |        |        |        |        |
| BOE 1/16/24   | ADA + fountains   |        |        | 2      |        |        | 1                             | 1      |   |        |        |        |        |
| Chestnut Ridge  | CSARCH PRIORITY #1 - review shop drawings & release by 20-FEB-24 (16 wk. lead-time) |        |        |        |        |        | vacant school                 |        |   |        |        |        |        |
|   | Doors   |        |        |        |        |        | 1                             |        |   |        |        |        |        |
| BOE 2/13/24   | Windows (1)   |        |        |        |        |        | 1                             |        |   |        |        |        |        |
| BOE 1/16/24   | ADA + fountains   |        |        | 2 +    | 2 +    |        | 1 +                           | 1 +    | 2 +   |        |        |        |        |
| Hempstead   |   |        |        |        |        |        | vacant school                 |        |   |        |        |        |        |
|   | Doors   |        |        |        | 2      |        |                               |        |   |        |        |        |        |
| BOE 2/13/24   | Windows (3)   |        |        |        |        |        |                               |        |   |        | 2      | 2      |        |
| BOE 1/16/24   | ADA + fountains   |        |        | 2 +    | 2 +    |        | 1 +                           | 1 +    | 2 +   |        |        |        |        |
| Eldorado  | CSARCH PRIORITY #1 - review shop drawings & release by 20-FEB-24 (16 wk. lead-time) |        |        |        |        |        | vacant school                 |        |   |        |        |        |        |
|   | Doors   |        |        |        |        | 2      |                               |        |   |        |        |        |        |
| BOE 2/13/24   | Windows (1)   |        |        |        |        |        | 1                             | 1      |   |        |        |        |        |
| BOE 1/16/24   | ADA + fountains   |        |        | 2 +    | 2 +    |        | 1 +                           | 1 +    | 2 +   |        |        |        |        |
| Fleetwood   |   |        |        |        |        |        | occupied school - Summer 2024 |        |   |        |        |        |        |
| 2   | Doors   |        |        | 2      |        |        |                               |        |   |        |        |        |        |
| BOE 2/13/24   | Windows (3)   |        |        |        |        |        |                               |        |   |        | 2      | 2      |        |
| BOE 1/16/24   | ADA + fountains   |        |        | 2 +    | 2 +    |        | 1 +                           | 1 +    | NOTE: Partial Occupancy - Nurse to Class 120 for Summer School. |        |        |        |        |
| Grandview   |   |        |        |        |        |        | occupied school - Summer 2024 |        |   |        |        |        |        |
|   | Doors   |        |        | 2      |        |        |                               |        |   |        |        |        |        |
| BOE 2/13/24   | Windows (2)   |        |        |        |        |        |                               |        | 2   | 2      |        |        |        |
| BOE 1/16/24   | ADA + fountains   |        |        | 2 +    | 2 +    |        | 1 +                           | 1 +    | NOTE: Partial Occupancy - Nurse to Class 120 for Summer School. |        |        |        |        |
| Summit Park   |   |        |        |        |        |        | occupied school - Summer 2024 |        |   |        |        |        |        |
|   | Doors   |        |        |        | 2      |        |                               |        |   |        |        |        |        |
| BOE 2/13/24   | Windows (2)   |        |        |        |        |        |                               |        | 2   | 2      |        |        |        |
| BOE 1/16/24   | ADA + fountains   |        |        | 2 +    | 2 +    |        | 1 +                           | 1 +    | NOTE: Partial Occupancy - Nurse to Class 120 for Summer School. |        |        |        |        |
| Lime Kiln   | CSARCH PRIORITY #1 - review shop drawings & release by 20-FEB-24 (16 wk. lead-time) |        |        |        |        |        | vacant school                 |        |   |        |        |        |        |
|   | Doors   |        |        |        |        | 2      |                               |        |   |        |        |        |        |
| BOE 2/13/24   | Windows (1)   |        |        |        |        |        | 1                             | 1      |   |        |        |        |        |
| BOE 1/16/24   | ADA + fountains   |        |        |        |        |        | 1                             | 1      |   |        |        |        |        |



## d. ARPA Construction - Financial Update 4.1.24

### 1. Phase 1 Projects

#### i. Phase 1 Spring Valley EMERGENCY PROJECT - Flooring Replacement Work

##### Awarded Contracts:

|                        |                        |                          |
|------------------------|------------------------|--------------------------|
| RENU:                  | \$ 2,326,580.00        | Bay Shore State Contract |
| Milburn:               | \$ 1,550,005.06        | Bay Shore State Contract |
| <b>COMBINED TOTAL:</b> | <b>\$ 3,876,585.06</b> |                          |

##### Change Orders To-Date (Approved):

|                        |                       |  |
|------------------------|-----------------------|--|
| RENU:                  | (\$ 51,540.33)        |  |
| Milburn:               | \$ 0.00               |  |
| <b>COMBINED TOTAL:</b> | <b>(\$ 51,540.33)</b> |  |

##### Paid To-Date:

|                        |                        |  |
|------------------------|------------------------|--|
| RENU:                  | \$ 2,275,039.67        |  |
| Milburn:               | \$ 1,546,480.59        |  |
| <b>COMBINED TOTAL:</b> | <b>\$ 3,821,520.26</b> |  |

#### ii. Phase 1A Flooring Replacement Work (Summer 2022)

##### Awarded Contracts:

|                        |                        |                          |
|------------------------|------------------------|--------------------------|
| RENU:                  | \$ 5,630,303.47        | Bay Shore State Contract |
| Milburn:               | \$ 4,818,037.66        | Bay Shore State Contract |
| <b>COMBINED TOTAL:</b> | <b>\$10,448,341.13</b> |                          |

##### Change Orders To-Date (Approved):

|                        |                     |  |
|------------------------|---------------------|--|
| RENU:                  | \$ 61,964.68        |  |
| Milburn:               | \$ 1,309.13         |  |
| <b>COMBINED TOTAL:</b> | <b>\$ 63,273.81</b> |  |

##### Paid To-Date:

|                        |                         |  |
|------------------------|-------------------------|--|
| RENU:                  | \$ 5,624,124.20         |  |
| Milburn:               | \$ 4,819,346.66         |  |
| <b>COMBINED TOTAL:</b> | <b>\$ 10,443,470.99</b> |  |

### 2. Kitchen Hoods Replacement Project

#### i. Kitchen Hoods & Equipment Replacement Project (Summer 2022)

##### Awarded Contracts: (Multi-Prime Bids)

|                        |                        |  |
|------------------------|------------------------|--|
| Renu Interiors:        | \$ 963,000.00          | GC-01 (General Construction Contract)    |
| Rockland Electric:     | \$ 280,000.00          | EC-02 (Electrical Contract)              |
| Bertussi Contracting:  | \$ 1,188,188.00        | MC-03 (Mechanical Contract)              |
| Mace Contracting:      | \$ 558,700.00          | PC-04 (Plumbing Contract)                |
| Joe Flihan Co.:        | \$ 344,732.00          | KC-05 (Kitchen Equipment State Contract) |
| <b>COMBINED TOTAL:</b> | <b>\$ 3,334,620.00</b> |  |

##### Change Orders To-Date (Approved):

|                        |                      |  |
|------------------------|----------------------|--|
| Renu Interiors:        | \$ 163,613.51        |  |
| Rockland Electric:     | \$ 26,915.98         |  |
| Bertussi Contracting:  | \$ (29,700.00)       |  |
| Mace Contracting:      | \$ -                 |  |
| <b>COMBINED TOTAL:</b> | <b>\$ 160,829.49</b> |  |

##### Paid To-Date:

|                        |                       |  |
|------------------------|-----------------------|--|
| Renu Interiors:        | \$1,070,283.05        |  |
| Rockland Electric:     | \$ 258,387.63         |  |
| Bertussi Contracting:  | \$ 1,090,143.41       |  |
| Mace Contracting:      | \$ 497,325.00         |  |
| Joe Flihan Co.:        | \$ 191,209.00         |  |
| <b>COMBINED TOTAL:</b> | <b>\$3,107,348.09</b> |  |



### 3. Phase 3A – Flooring Abatement & Replacements

#### Awarded Contracts 1:

RENU: \$ 4,731,207.00

Milburn: \$ 5,004,097.00

COMBINED TOTAL: \$ 9,735,304.00

#### Change Orders To-Date (Approved):

RENU: \$ 684,783.40

Milburn: \$ (64,792.21)

COMBINED TOTAL: \$ 619,991.19

#### Paid To-Date:

RENU: \$ 5,022,333.57

Milburn: \$ 4,646,111.66

COMBINED TOTAL: \$ 9,668,445.23

### 4. Phase 1B – Door/Hardware & Window Replacements

#### Awarded Contracts:

C&M Doors & Arrow: \$ 7,077,689

TOTAL: \$ 7,077,689

#### Paid To-Date:

C&M Doors: \$ 778,066.36

COMBINED TOTAL: \$ 778,066.36

### 5. Phase 3B – Doors/Hardware Replacements

#### Awarded Contracts:

Renu/Sunrise Doors: \$ 3,350,919

TOTAL: \$ 3,350,919

#### Paid To-Date:

Renu: \$ 249,007

COMBINED TOTAL: \$ 249,007

---

**Total Combined Paid To-Date: \$ 28,067,857.93**

#### Pending Work:

### 6. Phase 1A – HVAC Work

#### Awarded Contracts:

Trane - Margetts & Kakiat: \$ 15,320,290.29 (Turnkey & Equipment Contracts)

Renu/Milburn (Elmwood): \$ 591,952.97

TOTAL: \$ 15,912,243.26

### 7. Phase 3D – Window Replacements

#### Awarded Contracts:

C&M Doors & Arrow: \$ 11,367,750

TOTAL: \$ 11,367,750

### 8. Phase 1B & 3C – ADA Improvement Projects

#### Awarded Contracts:

Essential Constructs: \$ 9,847,657.79

TOTAL: \$ 9,847,657.79



9. Classroom Casework (free standing)

Pending Contracts:

Casework: \$ 259,000

TOTAL: \$ 259,000

---

**Total Remaining Work: \$ 47,142,251.31**

**Financial Summary:**

**Total Combined Paid To-Date : \$28,067,857.93**

**Total Remaining Work : \$47,142,251.31**

---

**Sub Total Work : \$75,210,109.24**

**Total Approved CO To-Date : \$ 792,554.16 (1.06%)**

---

**Grand Total (Including CO's) : \$76,002,663.40**

**PCO's under review : \$ (176,474.80)**

---

**Sub Total : \$ 75,826,188.60**

**Total ARPA Budget (Hard Cost) : \$77,115,829.00**

**Sub Total : \$75,826,188.60**

---

**Construction Contingency Remaining : \$ 1,289,640.40 (2.73%)**  
(including pending PCO's)



## 2. Health and Safety Update

### a. Project Safety Report

| <u>Safety</u>  | <u>This Period</u><br><u>3/19/24-</u><br><u>4/1/24</u> | <u>Cumulative</u><br><u>To-Date</u> |
|--|--|-------------------------------------|
| First AID Cases:                                     | 0  | 0                                   |
| Recordable Injuries:                                 | 0  | 0                                   |
| Recordable Illnesses:                                | 0  | 0                                   |
| Lost Workdays Cases:                                 | 0  | 0                                   |
| <b><u>Project Total Injuries/Cases Reported:</u></b> | <b>0</b>   | <b>0</b>                            |
| <b><u>OSHA Incident Rate (OIR):</u></b>              | <b>0</b>   | <b>0</b>                            |

**Note:**

1. OSHA incident Rate = Total number of injuries & illnesses multiplied by 3,874 (OSHA Labor Hours) divided by the number of hours worked by all employees.
2. Jacobs internal Safety field walk to occur on 23<sup>rd</sup> July 2024.



## **Appendices**

- a. Phase 1A – Change Orders & Payment Applications - Status Logs
- b. Phase Kitchen Hoods - RFI, Submittal, Change Orders & Payment Application - Status Logs
- c. Phase 1A MEP – RFI, Submittal - Status Logs
- d. Phase 3A – RFI, Submittal - Status Logs



### Phase 1A – Flooring Abatement - Pay Request's Summary - To Date

Jacobs

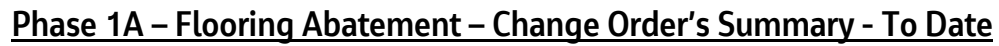
**Pay Requests Summary Till Date**

**Project Name : Phase 1A - Flooring Abatement**

| Sr. No. | Contract   | Number   | Period To  | From Company   | Current Payment Due | Status                                  | Remarks         |
|---------|--|--|------------|----------------|---------------------|---|-----------------|
| 1       | 1A - 01 - GC - MILBURN - NEW YORK STATE - 001 - RENU Interiors | 1A - 01 - GC - MILBURN - NEW YORK STATE - 001 - PA# 0001 | 7/31/2022  | RENU Interiors | \$2,702,224.80      | Billed                                  | -               |
| 2       | 1A - 01 - GC - MILBURN - NEW YORK STATE - 001 - RENU Interiors | 1A - 01 - GC - MILBURN - NEW YORK STATE - 001 - PA# 0002 | 8/31/2022  | RENU Interiors | \$2,050,195.04      | Billed                                  | -               |
| 3       | 1A - 01 - GC - MILBURN - NEW YORK STATE - 001 - RENU Interiors | 1A - 01 - GC - MILBURN - NEW YORK STATE - 001 - PA# 0003 | 9/30/2022  | RENU Interiors | \$27,181.95         | Billed                                  | -               |
| 4       | 1A - 01 - GC - MILBURN - NEW YORK STATE - 001 - RENU Interiors | 1A - 01 - GC - MILBURN - NEW YORK STATE - 001 - PA# 0004 | 10/31/2022 | RENU Interiors | \$28,435.87         | Billed                                  | -               |
| 5       | 1A - 01 - GC - MILBURN - NEW YORK STATE - 001 - RENU Interiors | 1A - 01 - GC - MILBURN - NEW YORK STATE - 001 - PA# 0005 | 5/31/2022  | RENU Interiors | \$11,309.13         | Billed                                  | -               |
| 6       | 1A - 01 - GC - RENU - BAYSHORE - 002 - RENU Interiors          | 1A - 01 - GC - RENU - BAYSHORE - 002 - PA# 0001          | 7/31/2022  | RENU Interiors | \$1,796,575.36      | Billed                                  | -               |
| 7       | 1A - 01 - GC - RENU - BAYSHORE - 002 - RENU Interiors          | 1A - 01 - GC - RENU - BAYSHORE - 002 - PA# 0002          | 8/31/2022  | RENU Interiors | \$2,244,478.10      | Billed                                  | -               |
| 8       | 1A - 01 - GC - RENU - BAYSHORE - 002 - RENU Interiors          | 1A - 01 - GC - RENU - BAYSHORE - 002 - PA# 0003          | 9/30/2022  | RENU Interiors | \$1,103,764.15      | Billed                                  | -               |
| 9       | 1A - 01 - GC - RENU - BAYSHORE - 002 - RENU Interiors          | 1A - 01 - GC - RENU - BAYSHORE - 002 - PA# 0004          | 10/31/2022 | RENU Interiors | \$120,449.30        | Billed                                  | -               |
| 10      | 1A - 01 - GC - RENU - BAYSHORE - 002 - RENU Interiors          | 1A - 01 - GC - RENU - BAYSHORE - 002 - PA# 0005          | 3/31/2023  | RENU Interiors | \$274,540.71        | Billed                                  |                 |
| 11      | 1A - 01 - GC - RENU - BAYSHORE - 002 - RENU Interiors          | 1A - 01 - GC - RENU - BAYSHORE - 002 - PA# 0006          | 6/30/2023  | RENU Interiors | \$76,102.83         | Billed                                  |                 |
| 12      | 1A - 01 - GC - RENU - BAYSHORE - 002 - RENU Interiors          | 1A - 01 - GC - RENU - BAYSHORE - 002 - PA# 0007          | 8/17/2023  | RENU Interiors | \$8,213.75          | Billed                                  |                 |
|         |  |  |            |                |                     |   | Total Items: 12 |
|         |  |  |            |                | \$10,443,470.99     | Total Billed Amount (\$)                |                 |
|         |  |  |            |                | \$0.00              | Total Open Amount (\$)                  |                 |
|         |  |  |            |                | \$10,443,470.99     | Grand Total (Billed + Open) Amount (\$) |                 |

powered by  
kahua™

Page 1 of 1



powered by  
**kahua**



## Phase KH - Kitchen Hoods Replacement - Pay Request's Summary - To Date

Project Name : Kitchen Hoods Replacement

Pay Requests Summary Till Date

Jacobs

| Sr. No.                                | Contract                                     | Number                        | Period To  | From Company           | Current Payment Due                                 | Status                                  | Remarks |
|--|--|-------------------------------|------------|------------------------|---|---|---------|
| 1                                      | KH - 01 - GC - 001 - General Construction    | KH - 01 - GC - 001 - PA# 0001 | 7/31/2022  | RENU Interiors         | \$87,218.55   | Billed                                  |         |
| 2                                      |  | KH - 01 - GC - 001 - PA# 0002 | 8/31/2022  |                        | \$177,667.10  | Billed                                  |         |
| 3                                      |  | KH - 01 - GC - 001 - PA# 0003 | 11/30/2022 |                        | \$182,620.16  | Billed                                  |         |
| 4                                      |  | KH - 01 - GC - 001 - PA# 0004 | 1/31/2023  |                        | \$46,647.37   | Billed                                  |         |
| 5                                      |  | KH - 02 - EC - 001 - PA# 0005 | 4/30/2023  |                        | \$22,041.36   | Billed                                  |         |
| 6                                      |  | KH - 02 - EC - 001 - PA# 0006 | 6/30/2023  |                        | \$23,916.96   | Billed                                  |         |
| 7                                      |  | KH - 02 - EC - 001 - PA# 0007 | 7/31/2023  |                        | \$244,094.99  | Billed                                  |         |
| 8                                      |  | KH - 02 - EC - 001 - PA# 0008 | 8/31/2023  |                        | \$162,528.75  | Billed                                  |         |
| 9                                      |  | KH - 02 - EC - 001 - PA# 0009 | 11/30/2023 |                        | \$1,733.75  | Billed                                  |         |
| 10                                     |  | KH - 02 - EC - 001 - PA# 0010 | 1/31/2024  |                        | \$121,816.06  | Billed                                  |         |
| 11                                     |  | KH - 02 - EC - 001 - PA# 0011 | 2/29/2024  |                        | \$56,330.68   | Open                                    |         |
|  |  |                               |            |                        | \$1,070,283.05                                      | Total Billed Amount (\$)                |         |
|  |  |                               |            |                        | \$56,330.68   | Total Open Amount (\$)                  |         |
| Total Items: 10                        |  |                               |            |                        |   |   |         |
| Sr. No.                                | Contract                                     | Number                        | Period To  | From Company           | Current Payment Due                                 | Status                                  | Remarks |
| 1                                      | KH - 02 - EC - 001 - Electrical Construction | KH - 02 - EC - 001 - PA# 0001 | 8/31/2022  | Rockland Electric      | \$14,131.25   | Billed                                  | -       |
| 2                                      |  | KH - 02 - EC - 001 - PA# 0002 | 10/31/2022 |                        | \$42,764.25   | Billed                                  | -       |
| 3                                      |  | KH - 02 - EC - 001 - PA# 0003 | 12/30/2022 |                        | \$77,244.50   | Billed                                  |         |
| 4                                      |  | KH - 02 - EC - 001 - PA# 0004 | 3/31/2022  |                        | \$15,294.39   | Billed                                  |         |
| 5                                      |  | KH - 02 - EC - 001 - PA# 0005 | 7/31/2022  |                        | \$53,912.50   | Billed                                  |         |
| 6                                      |  | KH - 02 - EC - 001 - PA# 0006 | 9/15/2022  |                        | \$55,049.74   | Billed                                  |         |
|  |  |                               |            |                        | \$258,387.63  | Total Billed Amount (\$)                |         |
|  |  |                               |            |                        | \$0.00  | Total Open Amount (\$)                  |         |
| Total Items: 6                         |  |                               |            |                        |   |   |         |
| Sr. No.                                | Contract                                     | Number                        | Period To  | From Company           | Current Payment Due<br>Retainage Amount - 5% (incl. | Status                                  | Remarks |
| 1                                      | KH - 03 - MC - 001 - Mechanical Construction | KH - 03 - MC - 001 - PA# 0001 | 10/31/2022 | Bertussi Contracting   | \$210,161.04  | Billed                                  |         |
| 2                                      |  | KH - 03 - MC - 001 - PA# 0002 | 2/1/2023   |                        | \$475,142.79  | Billed                                  |         |
| 3                                      |  | KH - 03 - MC - 001 - PA# 0003 | 8/31/2023  |                        | \$404,839.58  | Billed                                  |         |
| 4                                      |  | KH - 03 - MC - 001 - PA# 0004 | 11/30/2023 |                        | \$68,344.59   | Open                                    |         |
|  |  |                               |            |                        | \$1,090,143.41                                      | Total Billed Amount (\$)                |         |
|  |  |                               |            |                        | \$68,344.59   | Total Open Amount (\$)                  |         |
| Total Items: 4                         |  |                               |            |                        |   |   |         |
| Sr. No.                                | Contract                                     | Number                        | Period To  | From Company           | Current Payment Due<br>Retainage Amount - 5% (incl. | Status                                  | Remarks |
| 1                                      | KH - 03 - MC - 001 - Plumbing Construction   | KH - 04 - PC - 001 - PA# 0001 | 10/31/2022 | Mace Contracting Corp. | \$241,822.50  | Billed                                  |         |
| 2                                      | KH - 03 - MC - 001 - Plumbing Construction   | KH - 04 - PC - 001 - PA# 0002 | 10/31/2023 | Mace Contracting Corp. | \$255,502.50  | Billed                                  |         |
| 2                                      | KH - 03 - MC - 001 - Plumbing Construction   | KH - 04 - PC - 001 - PA# 0003 | 1/31/2024  | Mace Contracting Corp. | \$31,675.00   | Open                                    |         |
|  |  |                               |            |                        | \$497,325.00  | Total Billed Amount (\$)                |         |
|  |  |                               |            |                        | \$31,675.00   | Total Open Amount (\$)                  |         |
| Total Items: 2                         |  |                               |            |                        |   |   |         |
| Summary - Billed + Open - Amounts (\$) |  |                               |            |                        |   |   |         |
|  |  |                               |            |                        | \$2,916,139.09                                      | Grand Total Billed Amount (\$)          |         |
|  |  |                               |            |                        | \$156,350.27  | Grand Total Open Amount (\$)            |         |
|  |  |                               |            |                        | \$3,072,489.36                                      | Grand Total (Billed + Open) Amount (\$) |         |

powered by

kahua

Page 1 of 1



### Phase KH - Kitchen Hoods Replacement – Change Order's Summary to Date

Jacobs

**Approved Change Orders Summary Till Date**

**Project Name : Kitchen Hoods Replacement**

| Sr. No. | Contract                            | Number | Description  | Workflow Status | Total        | Current Contract Amount | Status                                    | Remarks   |
|---------|-------------------------------------|--------|--|-----------------|--------------|-------------------------|---|---|
| 1       | KH - 01 - GC - RENU Interiors       | 0001   | CO # 2 - R1 - Temporary Storage  | Locked          | \$23,300.00  | \$086,300.00            | Approved                                  | -   |
| 2       |                                     | 0002   | Additional Abatement @ Chestnut Ridge                                    | Locked          | \$17,847.43  | \$1,004,147.43          | Approved                                  |   |
| 3       |                                     | 0003   | Flashing of 4 HVAC EPDM pipe boots & 2 copper pitch pockets and flashing | Void            | \$0.00       | \$0.00                  | Void                                      | This change order should be directed to Rockland Electric. This is included in EC scope of work. Please reference the Construction documents - BRCHD ECGP01, Contract detail ZBEGP01. |
| 4       |                                     | 0004   | Life & Safety Plan Work East Ramapo                                      | Locked          | \$23,339.70  | \$1,028,087.13          | Approved                                  |   |
| 5       |                                     | 0005   | Additional Abatement at Fleetwood ES                                     | Void            | \$0.00       | \$0.00                  | Void                                      |   |
| 6       |                                     | 0006   | Additional Abatement at Grandview ES                                     | Void            | \$0.00       | \$0.00                  | Void                                      |   |
| 7       |                                     | 0007   | Additional Abatement at Summit Park ES                                   | Void            | \$0.00       | \$0.00                  | Void                                      |   |
| 8       |                                     | 0008   | Abatement CO based on CIC 09-01 GC                                       | In Review       | \$90,526.38  | \$1,126,613.51          | Approved                                  |   |
| 9       | KH - 02 - EG - Rockland Electric    | 0001   | Kitchen Refrigeration Units  | Locked          | \$16,099.36  | \$206,099.36            | Approved                                  |   |
| 10      |                                     | 0002   | Kitchen Refrigeration Repairs  | Locked          | \$948.61     | \$207,045.97            | Approved                                  |   |
| 11      |                                     | 0003   | Fire Alarm Start Up  | Locked          | \$2,357.72   | \$299,403.69            | Approved                                  |   |
| 12      |                                     | 0004   | Temporary Wiring T&M   | Locked          | \$4,497.88   | \$303,901.57            | Approved                                  |   |
| 13      |                                     | 0005   | Permanent Wiring T&M   | Locked          | \$2,936.41   | \$305,936.98            | Approved                                  |   |
| 14      |                                     | 0006   | Margetts 2x2 Fixtures  | In Review       | \$879.00     | \$305,936.98            | Approved                                  |   |
| 15      |                                     | 0007   | Additional Lighting  | In Review       | \$1,823.86   | \$305,936.98            | Open                                      | Under Review  |
| 15      |                                     | 0008   | PCO EC-8 Fire Alarm OT   | In Review       | \$2,738.80   | \$305,936.98            | Open                                      | Under Review  |
| 16      | KH - 03 - MC - Bertucci Contracting | 0001   | Credit CO for unused Allowance - 11 Schools                              | In Review       | -\$29,700.00 |                         | Approved                                  |   |
|         |                                     |        |  |                 |              | Total Rema: 10          |   |   |
|         |                                     |        |  |                 |              | \$160,829.49            | Total Approved Change Order's Amount (\$) |   |
|         |                                     |        |  |                 |              | \$4,259.36              | Total Open Change Order's Amount (\$)     |   |


powered by  
kahua™

Page 1 of 1

## Kitchen Hoods Replacement – Renu Interior - Submittal Register – Page 01 of 04


| Jacobs                                      |           | Project Name : EAST RAMAPO CENTRAL SCHOOL DISTRICT |  |   |  |   |  |                            |                    |         |                                 |
|---|-----------|--|--|---|--|---|--|----------------------------|--------------------|---------|---------------------------------|
| Challenging today.<br>Reinventing tomorrow. |           | Sub - Project Name : KITCHEN HOODS REPLACEMENT     |  |   |  |   |  |                            |                    |         |                                 |
|   |           | Client Name : EAST RAMAPO CENTRAL SCHOOL DISTRICT  |  |   |  |   |  |                            |                    |         |                                 |
|   |           | Contractor Name : RENU INTERIORS                   |  |   |  |   |  |                            |                    |         |                                 |
|   |           | All the Way Up!                                    |  |   |  |   |  |                            |                    |         |                                 |
|   |           | Supporting - Engaged - Changing                    |  |   |  |   |  |                            |                    |         |                                 |
| Submittals Required as per Contract         |           |  |  |   |  | Submissions on Kahua Till Date  |  |                            |                    |         |                                 |
| Sr. No.                                     | Spec. No. | Spec. Name   | Contract   | Contractor Name   | Clause No.   | Submittal Name  | Submitted by Prime Contractor till date (Yes/No) | Submittal No.              | Approved by CSArch | Remarks |                                 |
| 1   | 24119     | Selective Demolition                               | General Construction   | Renu Interiors  | 1.5  | Informational Submittals (Proposed Protection Measures, Schedule of Selective Demolition Activities, Pre-demolition Photographs or Video, Warranties) | Yes  | KH-01-GC-0021              | Yes                |         |                                 |
| 2   | 28213     | Asbestos Abatement                                 |  |   | 1.03 (Section A & B)   | Documentation (Certificates, Licenses, Respiratory Protection Program, NYS DOL Certificate etc.)  | Yes  | KH-01-GC-0001              | Yes                |         |                                 |
|   |           | 1.03 (Section C & D)                               |  |   | Documentation upon Final Close out of Project  | Yes   | KH-01-GC-036                                     | Incomplete                 |                    |         |                                 |
| 3   | 51200     | Structural Steel Framing                           |  |   | 1.5  | Action Submittals (Product Data, Shop Drawings, WPS & PQR, Delegated Design Submittal)  | Yes  | KH-01-GC-002, KH-01-GC-037 | Incomplete         |         |                                 |
|   |           | 1.6  |  |   | Informational Submittals (Qualification Data, Paint Compatibility Certificates, Mill & Product Test Reports, Survey of existing conditions, Field quality-control reports)   | Yes   | KH-01-GC-028                                     | Incomplete                 |                    |         |                                 |
| 4   | 61000     | Rough Carpentry                                    |  |   | 1.4  | Product Data & Research/Evaluation Reports  | Yes  | KH-01-GC-0022              | Yes                |         |                                 |
| 5   | 61600     | Sheathing  |  |   | 1.3  | Product Data  | Yes  | KH-01-GC-0029              | Incomplete         |         |                                 |
| 6   | 72100     | Thermal Insulation                                 |  |   | 1.3  | Action Submittals (Product Data)  | Yes  | KH-01-GC-030               | Incomplete         |         |                                 |
|   |           | 1.4  |  |   | Informational Submittals (Installer's Certification, Product Test Reports, Research Reports)   | Yes   | KH-01-GC-033                                     | Incomplete                 |                    |         |                                 |
|   |           | 1.4  |  |   | Action Submittals (Product Data, Shop Drawings)  | No  | -  | No                         |                    |         |                                 |
| 7   | 75323     | EPDM Roofing                                       |  |   | 1.5  | Informational Submittals (Qualification data, Manufacturer Certificates, Product Test Reports, Evaluation & Field Test Reports)                       | No   | -                          | No                 |         |                                 |
|   |           | 1.6  |  |   | Closeout Submittals -<br>A. Maintenance Data: For roofing system to include in maintenance manuals.<br>B. Certified statement from existing roof membrane manufacturer stating that existing roof warranty has not been affected by Work performed under this Section. | No  | -  | No                         |                    |         |                                 |
| 8   | 77100     | Roof Specialties                                   |  |   | 1.3  | Action Submittals (Product Data, Shop Drawings, Samples)  | Yes  | KH-01-GC-0031              | Incomplete         |         |                                 |
|   |           | 1.4  |  |   | Informational Submittals (Qualification Data, Certificates, Test Reports, Sample Warranty)   | No  | -  | No                         |                    |         |                                 |
|   |           | 1.5  |  |   | Closeout Submittals - Maintenance Data: For roofing specialties to include in maintenance manuals.   | Yes   | KH-01-GC-0036                                    | Incomplete                 |                    |         |                                 |
| 9   | 77200     | Roof Accessories                                   |  |   | 1.4  | Action Submittals (Product Data, Shop Drawings, Samples, Delegated-Design Submittal)  | Yes  | KH-01-GC-0024              | Yes                |         | Contractor to review & resubmit |
|   |           | 1.5  |  |   | Informational Submittals (Coordination Drawings, Sample Warranty)  | Yes   | KH-01-GC-0036                                    | Incomplete                 |                    |         |                                 |
|   |           | 1.6  |  |   | Closeout Submittals - Operation and Maintenance Data: For roof accessories to include in operation and maintenance manuals.  | Yes   | KH-01-GC-0036                                    | Incomplete                 |                    |         |                                 |
| 10  | 78413     | Penetration Firestopping                           |  |   | 1.4  | Action Submittals (Product Data & Schedule)   | Yes  | KH-01-GC-0017              | Yes                |         |                                 |
|   |           | 1.5  |  |   | Informational Submittals (Qualification Data, Test Reports)  | Yes   | KH-01-GC-0032                                    | Incomplete                 |                    |         |                                 |
|   |           | 1.6  |  |   | Closeout Submittals - Installer Certificates: From installer indicating that penetration firestopping systems have been installed in compliance with requirements and manufacturer's written instructions.   | No  | -  | No                         |                    |         |                                 |
| 11  | 79200     | Joint Sealants                                     |  |   | 1.2  | Action Submittals (Product Data, Samples for Initial Selection, Joint Sealant Schedule)   | Yes  | KH-01-GC-0018              | Incomplete         |         | R&R ON 12/13/23 to CSArch       |
|   |           | 1.3  |  |   | Informational Submittals (Test and Evaluation Reports)   | Yes   | KH-01-GC-0034                                    | Incomplete                 |                    |         |                                 |
|   |           | 1.4  |  |   | Closeout Submittals -<br>A. Warranty Documentation:<br>1. Manufacturer's special warranties.<br>2. Installer's special warranties.   | Yes   | KH-01-GC-0036                                    | Incomplete                 |                    |         |                                 |
| 12  | 83113     | Access Doors and Frames                            |  |   | 1.2  | Action Submittals (Product Data, Samples, Product Schedule)   | Yes  | KH-01-GC-0023              | Yes                |         |                                 |
|   |           | 1.3  |  |   | Informational Submittals (Qualification Data)  | No  |  | No                         |                    |         |                                 |
|   |           | 1.4  |  |   | Closeout Submittals - Record Documents: For fire-rated doors, list of applicable room name and number in which access door is located.   | No  | -  | No                         |                    |         |                                 |
| 13  | 92216     | Non-Structural Metal Framing                       |  |   | 1.2  | Action Submittals (Product Data)  | Yes  | KH-01-GC-0019              | Yes                |         |                                 |
|   |           | 1.3  |  |   | Informational Submittals (Product Certificates, Evaluation Reports)  | Yes   | KH-01-GC-0035                                    | Incomplete                 |                    |         |                                 |
| 14  | 92900     | Gypsum Board Type X                                |  |   | 1.2  | Action Submittals (Product Data, Samples)   | Yes  | KH-01-GC-004               | Yes                |         |                                 |
| 15.1  | 95113     | Acoustical Panel Ceilings                          |  |   | 1.4  | Action Submittals (Product Data, Samples)   | Yes  | KH-01-GC-0026              | Yes                |         |                                 |
|   |           | 1.5  |  |   | Informational Submittals (Coordinated Drawings, Product Test Reports, Evaluation & Field Quality Control Reports)  | No  |  | No                         |                    |         |                                 |
|   |           | 1.6  |  |   | Closeout Submittals - Maintenance Data: For finishes to include in maintenance manuals.  | Yes   | KH-01-GC-0036                                    | Incomplete                 |                    |         |                                 |
| 15.2  | 95113     | Acoustical Panel Ceilings                          | 1.7  | Maintenance Material Submittals -<br>A. Furnish extra materials that match products installed and that are packaged with protective covering for storage and identified with labels describing contents.<br>1. Acoustical Ceiling Units: Full-size panels equal to 2 percent of quantity installed.<br>2. Suspension-System Components: Quantity of each exposed component equal to 2 percent of quantity installed.<br>3. Hold-Down Clips: Equal to 2 percent of quantity installed. | Yes  | KH-01-GC-0036   | Incomplete                                       |                            |                    |         |                                 |
| 16  | 99123     | Interior Painting                                  | 1.4  | Action Submittals (Product Data, Samples, Product Schedule)   | Yes  | KH-01-GC-0020   | Yes  |                            |                    |         |                                 |
|   |           | 1.5  | Maintenance Material Submittals -<br>A. Furnish extra materials that match products installed and that are packaged with protective covering for storage and identified with labels describing contents.<br>1. Paint Products: 5 percent, but not less than 1 gal. of each material and color applied. | Yes   | KH-01-GC-0036  | Incomplete  |  |                            |                    |         |                                 |

## Kitchen Hoods Replacement – Rockland - Submittal Register – Page 02 of 04



**Jacobs**  
Challenging today.  
Reinventing tomorrow.

**Project Name : EAST RAMAPO CENTRAL SCHOOL DISTRICT**  
**Sub - Project Name : KITCHEN HOODS REPLACEMENT**  
**Client Name : EAST RAMAPO CENTRAL SCHOOL DISTRICT**  
**Contractor Name : ROCKLAND ELECTRIC**



| Submittals Required as per Contract |           |  |                         |   |           | Submissions on Kahua Till Date   |  |                     |                 |   |
|-------------------------------------|-----------|--|-------------------------|---|-----------|--|--|---------------------|-----------------|---|
| Sr. No.                             | Spec. No. | Spec. Name   | Contract                | Contractor Name   | Class No. | Submittal Name   | Submitted by Prime Contractor till date (Yes/No) | Submittal No.       | Approved by C&E | Remarks   |
| 1                                   | 20319     | Low-voltage Electrical Power Conductors & Cables         | Electrical Construction | Rockland  | 1.1       | Product Data, Product Schedule, Quantity Take-off, Field quality control reports               | Incomplete                                       | EH-01-EC-0010       | Yes             | Only product data for cables were submitted                                     |
| 2                                   | 20326     | Grounding & Bonding for Electrical Systems               |                         |   | 1.2       | Submittals - See below Snapshot  | Yes  | EH-01-EC-0011       | Yes             |   |
| 3                                   | 20329     | Hangers and Supports for Electrical Systems              |                         |   | 1.2       | Product data, Shop Drawings, Coordination Drawings   | Incomplete                                       | EH-01-EC-0012       | Yes             | Only product data submitted   |
| 4                                   | 20333     | Accessories and Boxes for Electrical Systems             |                         |   | 1.1       | Product data, Coordination Drawings  | Incomplete                                       | EH-01-EC-0013, 0014 | Yes             | Accessories not submitted. Boxes & Cords submitted. Only Product data submitted |
| 5                                   | 20354     | Shelves and Shelf Loads for Electrical Rooms and Cabling |                         |   | 1.1       | Product Data   | No   | -                   | No              |   |
| 6                                   | 20355     | Identification for Electrical Systems                    |                         |   | 1.1       | Product Data, Meeting/Status Schedule, Delivered - Design submittal for field-look-ahead study | No   | -                   | No              |   |
| 7                                   | 20370     | Wiring Devices   |                         |   | 1.1       | Product Data, Samples  | No   | -                   | No              |   |
| 8                                   | 20385     | Circuit Breakers and Circuit Breakers                    |                         |   | 1.2       | Product Data, Shop Drawings  | No   | -                   | No              |   |
|                                     |           |  |                         |   | 1.1       | Maintenance Material Submittals - See below Snapshot   | No   | -                   | No              |   |
| 9                                   | 20519     | LED Interior Lighting                                    |                         |   | 1.1       | Product Data, Shop Drawings, Product Schedule  | Incomplete                                       | EH-01-EC-0001       | Incomplete      | Only product data submitted   |
| 10                                  | 20100     | Fire Detector and Alarm, AIO #2                          | 1.1                     | Product Data, Shop Drawings   | Yes       | EH-01-EC-0009  | Yes  |                     |                 |   |
|                                     |           |  | 1.1                     | Closeout Submittals (Education & Maintenance Data) - See below Snapshot | Yes       | EH-01-EC-0014  | Yes  |                     |                 |   |

**Note :** Red Text represents Non Submission of Submittals Till date

**LEGEND:** For number mentioned below, refer serial number in above summary table & refer the snapshots respectively for Specification requirements

**10-->**

**A.** Operation and Maintenance Data for fire alarm systems and components to include in emergency, operation, and maintenance manuals. Include the following:

**RE DETECTION AND ALARM** 203100 - 2

Alarm: 203100 - 2

1. Comply with the "Accessories" section of the "Inspection, Testing and Maintenance" chapter in NFPA 72.

2. Provide "Fire Alarm and Emergency Communications System Record of Completion" document according to the "Commission" chapter in NFPA 72.

3. Complete wiring diagrams showing connections between all devices and equipment. Each conductor shall be numbered at every junction point with indication of origin and termination points.

4. Riser diagram.

5. Device address.

6. Recent copy of inter-specifier software. This software shall also be in an electronic format to allow an alternate Authorized Distributor to add, change, or modify in any way the existing system data base.

7. Provide "Inspection and Testing Form" according to the "Inspection, Testing and Maintenance" chapter in NFPA 72, and include the following:

- a. Equipment tested.
- b. Frequency of testing of installed components.
- c. Frequency of inspection of installed components.
- d. Requirements and recommendations related to results of maintenance.
- e. Manufacturer's user testing manuals.

8. Manufacturer's required maintenance related to system warranty requirements.

9. Alternative operating instructions for mounting on fire alarm control unit and each associated unit.

**08-->**

**1.1 MAINTENANCE MATERIAL SUBMITTALS**

**A.** Furnish extra materials that match products installed and that are packaged with protective covering for storage and identified with labels describing contents.

**ENCLOSED SWITCHES AND CIRCUIT BREAKERS** 203210 - 1

**SEARCH 209-2009** East Ramapo Central School District Kitchen Hood Replacement Project


- 1. Fuses: Equal to 10 percent of quantity installed for each size and type, but not fewer than three of each size and type.
- 2. Fuse Pullers: Two for each size and type.

**02-->**

**1.2 SUBMITTALS**

- A. Minimum 1/8" scale floor plan drawings depicting the building ground electrode system as to be installed.
- B. Detailed riser diagram depicting the building ground electrode system and bonding as to be installed.
- C. Product data sheets (cut sheets) for all ground bus bars and other components of the grounding system.
- D. Field test reports.

## Kitchen Hoods Replacement – Bertussi Contracting - Submittal Register – Page 03 of 04

| Jacobs                              |           | Project Name : EAST RAMAPO CENTRAL SCHOOL DISTRICT |                         | Sub - Project Name : KITCHEN HOODS REPLACEMENT   |            | Client Name : EAST RAMAPO CENTRAL SCHOOL DISTRICT  |  | Contractor Name : BERTUSSI CONTRACTING |                    |  |         |
|-------------------------------------|-----------|--|-------------------------|--|------------|--|--|--|--------------------|---|---------|
| Submittals Required as per Contract |           |  |                         |  |            | Submissions on Kahua Till Date   |  |  |                    | Bertussi's Final Submission   |         |
| Sr. No.                             | Spec. No. | Spec. Name   | Contract                | Contractor Name  | Clause No. | Submittal Name   | Submitted by Prime Contractor till date (Yes/NO) | Submittal No.                          | Approved by CSArch |   | Remarks |
| 1                                   | 230553    | Mechanical Identification                          | Mechanical Construction | Bertussi   | 1.2        | Action Submittals (Product Data, Egt. Label Schedule)  | No   | -                                      | No                 |   |         |
| 2                                   | 230593    | Testing, Adjusting and Balancing                   |                         |  | 1.3        | A. Qualification Data: AABC or NEBB certification.<br>B. Written statement of coordination with sheetmetal contractor.<br>C. Written statement of coordination with piping contractor.<br>D. Written statement of acceptance of location and quantity of air and water balancing devices.<br>E. Final TAB reports. | Yes  | KH-03-MC-0005, 0001                    | Yes                |   |         |
| 3                                   | 230713    | Duct Insulation                                    |                         |  | 1.2        | Action Submittals (Product data)   | Yes  | KH-03-MC-001, 004                      | Yes                |   |         |
| 4                                   | 231113    | Metal Ductwork                                     |                         |  | 1.2        | Action Submittals (Product Data, Shop Drawings)  | Yes  | KH-03-MC-002, 003, 0016, 0017, 0022    | Yes                | KH-03-MC-022 resubmitted as shop/as built drawings                                  |         |
|                                     |           |  |                         |  | 1.3        | Informational Submittals (Coordination Drawings)   | Yes  |  | Yes                |   |         |
| 5                                   | 233300    | Air Duct Accessories                               |                         |  | 1.2        | Action Submittals (Product data)   | No   | -                                      | No                 |   |         |
|                                     |           |  |                         |  | 1.3        | Closeout Submittals - Operation and Maintenance Data: For air duct accessories to include in operation and maintenance manuals.  | Yes  | KH-03-MC-0027                          | Incomplete         |   |         |
| 6                                   | 233423    | Power Ventilators                                  |                         |  | 1.2        | Action Submittals (Product data)   | No   | -                                      | No                 |   |         |
|                                     |           |  | 1.3                     | Closeout Submittals - Operation and Maintenance Data: For power ventilators to include in emergency, operation, and maintenance manuals. | No         | KH-03-MC-0027  | Incomplete                                       |  |                    |   |         |
| 7                                   | 233534    | FIELD WELDED RECTANGULAR GREASE DUCTS              | Mechanical Construction | Bertussi   | 1.3        | Action Submittals (Product Data, Shop Drawings)  | Yes  | KH-03-MC-001, 003, 0016, 0017, 0022    | Yes                | KH-03-MC-022 resubmitted as shop/as built drawings                                  |         |
|                                     |           |  |                         |  | 1.4        | Informational Submittals (Welding Certificates, Coordination Drawings)   | Yes  |  | Yes                |   |         |
| 8                                   | 233713    | Grillers, Registers & Diffusers                    |                         |  | 1.2        | Action Submittals (Product Data, Samples)  | Yes  | KH-03-MC-0010                          | Yes                | Only Grills required.   |         |
|                                     |           |  |                         |  | 1.4        | Action Submittals (Product Data, Shop Drawings)  | Yes  | KH-03-MC-0006, 0016, 0117, 0022        | Yes                | Shops submitted and approved for 11 schools   |         |
| 9                                   | 233813    | Commercial Kitchen Hoods                           |                         |  | 1.5        | Informational Submittals (Welding Certificates, Coordination Drawings)   | Yes  | KH-03-MC-0022                          | Yes                | KH-03-MC-022 resubmitted as shop/as built drawings                                  |         |
|                                     |           |  | 1.6                     | Maintenance Material Submittals - See below Snapshot   | Yes        | KH-03-MC-0027  | Incomplete                                       |  |                    |   |         |

**Note :** Red Text represents Non Submission of Submittals Till date



**LEGEND:** Refer serial number in above summary table & snapshot respectively for Sepcification requirement.

**09 ---> 1.6 MAINTENANCE MATERIAL SUBMITTALS**

**A.** Furnish extra materials that match products installed and that are packaged with protective covering for storage and identified with labels describing contents.

**1.** Grease Filters/Baffles: One complete set(s).

## Kitchen Hoods Replacement – Mace Contracting - Submittal Register – Page 04 of 04

|  <b>Challenging today.<br/>Reinventing tomorrow.</b> |           | <b>Project Name : EAST RAMAPO CENTRAL SCHOOL DISTRICT</b><br><b>Sub - Project Name : KITCHEN HOODS REPLACEMENT</b><br><b>Client Name : EAST RAMAPO CENTRAL SCHOOL DISTRICT</b><br><b>Contractor Name : MACE CONTRACTING</b> |                       |  |            |  |  |                        |                    |   |
|---|-----------|---|-----------------------|---|------------|--|--|------------------------|--------------------|---|
| Submittals Required as per Contract   |           |   |                       |   |            | Submissions on Kahua Till Date   |  |                        |                    |   |
| Sr. No.   | Spec. No. | Spec. Name  | Contract              | Contractor Name   | Clause No. | Submittal Name   | Submitted by Prime Contractor till date (Yes/No) | Submittal No.          | Approved by CSArch | Remarks   |
| 1   | 220529    | Supports & Sleeves  | Plumbing Construction | Mace  | 1.4        | Product Data, Manufacturer Installation Instructions & Shop Drawings   | Incomplete                                       | KH-04-PC-003           | Yes                | Only product data submitted   |
| 2   | 220553    | Plumbing Identification   |                       |   | 1.2        | Action Submittals (Product Data)   | Yes  | KH-04-PC-004           | Yes                |   |
| 3   | 271813    | Natural Gas Piping  |                       |   | 1.5        | Action Submittals - Product Data: For each type of the following:<br>1. Piping specialties.<br>2. Valves. Include pressure rating, capacity, settings, and electrical connection data of selected models.<br>3. Pressure regulators. Indicate pressure ratings and capacities.<br>4. Directional fittings. | Incomplete                                       | KH-04-PC-005, 006, 007 | Yes                | KH-04-PC-005, 006, 007 - Submittal was submitted for pipes & valves |
|   |           |   |                       |   | 1.6        | Closeout Submittals - Operation and Maintenance Data. For motorized gas valves and pressure regulators to include in emergency, operation, and maintenance manuals.  | No   | -                      | No                 |   |

**Note :** Red Text represents Non Submission of Submittals Till date



## Phase 1A – MEP Package – RFI Log - To Date (Page – 1 of 3)

| East Ramapo Central School District                 |          |                |           |   |   |           |   |
|---|----------|----------------|-----------|---|---|-----------|---|
| PHASE 1A - MEP - RFI LOG                            |          |                |           |   |   |           |   |
| Request For Information: 5 Business Days for Review |          |                |           |   |   |           |   |
| RFI No #  | School   | Date Submitted | Due Date  | QC - Question - 1   | CSArch - Answer - 1   | Returned  | Status  |
| 001   | Kalish   | 1/13/2023      | 1/26/2023 | Drawing ME5-A0001-Demo note (B11) calls for the existing lower assembly to be removed and for the listed to remain. Detail 3 on Drawing 3103 shows new lintels. Is a new lintel required only where new UVs are being installed where are old ones existing?  | New lintels are for new openings (where no UV existed before).  | 1/25/2023 | CLOSED  |
| 001   | Kalish   | 1/13/2023      | 1/26/2023 | Is there a specification for the new brick to be installed at new openings?   | Refer color, size, and texture to match existing with no observable difference in finish from 10' flat away. See attached spec section for veneer masonry for additional information.   | 1/25/2023 | CLOSED  |
| 001   | Kalish   | 1/13/2023      | 1/26/2023 | With most of the refrigeration scope removed, can the condensing units for the AC units that are to remain be installed on the exterior ground floor? All new condensing units will be set on concrete pads. This will eliminate needing to run refrigeration piping and electrical wiring up through the school and also eliminate the need to do extensive disassembly on the roof for new pads and penetrations.   | Franklin does not recommend this, the condensers were intended to sit on base pumps and in the winter, they would need to be above snow line, being this location is right outside classroom windows snow will be an issue. Foundation is also a concern for ground mounted equipment.  | 1/25/2023 | CLOSED  |
| 001   | Kalish   | 1/13/2023      | 1/26/2023 | With most of the refrigeration scope removed will the demolition of the existing electrical overhead still be required? Can the power for the remaining new loads be handled from existing panels or can a new panel be tapped off the existing?  | Scope of work indicated is to keep existing switchboard and tap for connection to new panelboard to serve new circuits.   | 1/25/2023 | CLOSED  |
| 001   | Kalish   | 1/13/2023      | 1/26/2023 | In the areas where ceiling removal and reinstallation is required has the ceiling material and materials above the ceiling been confirmed as Non-ACM (asst)?  | Yes, refer to report and Appendix A of the report.  | 1/25/2023 | CLOSED  |
| 001   | Kalish   | 1/13/2023      | 1/26/2023 | Is any of the existing piping insulation ACM or PACM?   | Green Modified (Show Insulation was confirmed Non-ACM. Refer to report and Appendix A of the report.  | 1/25/2023 | CLOSED  |
| 001   | Kalish   | 1/13/2023      | 1/26/2023 | Kalish: What happens for UV to Storage (ME5-C001-Dwg R3115 & R3116)   | Demolition of existing air handler feeding the gym. This is replaced with RTU.  | 1/25/2023 | CLOSED  |
| 001   | Kalish   | 1/13/2023      | 1/26/2023 | Clarify that there does not intend to replace lower based on mechanical drawings and contrary to architectural.   | -   |           | INCOMPLETE  |
| 001   | Kalish   | 1/13/2023      | 1/26/2023 | Review existing electrical feeders  | If referring to existing branch circuits feeding existing UVs, Franklin does not recommend existing circuits. The condition of existing panelboards appears to be poor and new equipment should be connected to new circuits and panelboards to ensure reliable operation.  | 1/25/2023 | INCOMPLETE RESPONSE (Instructor/Engineer to provide drawing no. 6 detail no.)                   |
| 001   | Kalish   | 1/13/2023      | 1/26/2023 | Kalish Missing UV in electrical drawings-Pls check 74, each shows 75 Electrical drawings skip 54 on the schedule, and skip 54 on the drawings.  | Unit UV-54 added to electrical scope.   | 1/25/2023 | INCOMPLETE RESPONSE (Instructor/Engineer to provide addendum sketch)                            |
| 001   | Kalish   | 1/13/2023      | 1/26/2023 | For UV replacement, can wall boxes be reused & not replaced?  | In general, we want to design around new buildings being required and if the existing can be reused, the contractor should submit an RFI at that time indicating existing box conditions and size being adequate for reuse. I would not design around reusing something like that (detail note).  | 1/25/2023 | CLOSED  |
| 001   | Kalish   | 1/13/2023      | 1/26/2023 | What possibilities, if any, exist for work access to interior work areas PRIOR to conclusion of classes in June? For example, could some, or classroom wings be made available in July?   | We have asked the district this question and have not heard back from the district yet. In order for the district to understand the type of access frame is looking for prior to the end of the school year we have provided a narrative of the type of construction activities this anticipate performing prior to the start of the school year. | 1/25/2023 | INCOMPLETE RESPONSE (No classrooms are available for construction outside of the summer months) |
| 001   | Margolis | 1/13/2023      | 1/26/2023 | Drawing ME5-A0001-Demo note (B11) calls for the existing lower assembly to be removed and for the listed to remain. Detail 3 on Drawing 3103 shows new lintels. Is a new lintel required only where new UVs are being installed where are old ones existing? Please clarify this aspect. These recommendations concerning existing existing spaces.   | New lintels are for new openings (where no UV existed before).  | 1/25/2023 | CLOSED  |
| 001   | Margolis | 1/20/2023      | 1/26/2023 | Is there a specification for the new brick to be installed at new openings?   | See response for Kalish.  | 1/25/2023 |   |
| 001   | Margolis | 1/13/2023      | 1/26/2023 | With most of the refrigeration scope removed, can the condensing units for the AC units that are to remain be installed on the exterior ground floor? All new condensing units will be set on concrete pads. This will eliminate needing to run refrigeration piping and electrical wiring up through the school and also eliminate the need to do extensive disassembly on the roof for new pads and penetrations.   | Similar response to that of Kalish, Franklin does not recommend.  | 1/25/2023 |   |
| 001   | Margolis | 1/13/2023      | 1/26/2023 | With most of the refrigeration scope removed will the demolition of the existing electrical overhead still be required? Can the power for the remaining new loads be handled from existing panels or can a new panel be tapped off the existing?  | Delisted & replacement not required. ME5 note scope to indicate connection to existing substation.  | 1/25/2023 | INCOMPLETE RESPONSE   |
| 001   | Margolis | 1/13/2023      | 1/26/2023 | In the areas where ceiling removal and reinstallation is required has the ceiling material and materials above the ceiling been confirmed as Non-ACM (asst)?  | Yes, refer to report and Appendix A of the report.  | 1/25/2023 | CLOSED  |
| 001   | Margolis | 1/13/2023      | 1/26/2023 | Is any of the existing piping insulation ACM or PACM?   | Yes, refer to report and Appendix A of the report.  | 1/25/2023 | CLOSED  |
| 001   | Margolis | 1/13/2023      | 1/26/2023 | With the AC being removed, and the possibility of not requiring an electrical service upgrade, can the existing feeders to the UVs be re-used other than detail 6 and replaced?   | We do not recommend reusing circuits. The condition of existing panelboards appears to be poor and new equipment should be connected to new circuits and panelboards to ensure reliable operation.  | 1/25/2023 | INCOMPLETE RESPONSE (Instructor/Engineer to provide drawing no. 6 detail no.)                   |
| 001   | Margolis | 1/13/2023      | 1/26/2023 | Please confirm if there are 3 existing UVs that are not shown on ME5112 that need to be removed   | There are none on the roof.   | 1/25/2023 | INCOMPLETE RESPONSE   |
| 001   | Margolis | 1/13/2023      | 1/26/2023 | For UV replacement, can wall boxes be reused & not replaced?  | In general, we want to design around new buildings being required and if the existing can be reused, the contractor should submit an RFI at that time indicating existing box conditions and size being adequate for reuse. I would not design around reusing something like that (detail note).  | 1/25/2023 | CLOSED  |
| 001   | Margolis | 1/13/2023      | 1/26/2023 | What possibilities, if any, exist for work access to interior work areas PRIOR to conclusion of classes in June? For example, could some, or classroom wings be made available in July?   | We have asked the district this question and have not heard back from the district yet. In order for the district to understand the type of access frame is looking for prior to the end of the school year we have provided a narrative of the type of construction activities this anticipate performing prior to the start of the school year. | 1/25/2023 | INCOMPLETE RESPONSE (No classrooms are available for construction outside of the summer months) |
| 002   | Margolis | 1/20/2023      | 1/26/2023 | The current drawings show detail line of a RTU. The RTU is currently a machine that serves the gym, cafeteria, and the corridor and wash for the windows. The new drawing doesn't show anything going back to serve the corridor wall wash. What is the plan for the corridor ventilation and wash?   |   |           |   |
| 002   | Margolis | 1/20/2023      | 1/26/2023 | Classroom 6 TBM have 11" radiators with glass. Can you please provide a detail on how you want to handle the window evaluation in this space?   | The windows for Classroom 6, need to be replaced in a future phase of work and the window sill/sill is to be replaced to accommodate the 40" height in that time. Can the detail of the UVs in these spaces be held off until the detail of the windows are completed in these classrooms?  | 3/2/2023  | INCOMPLETE RESPONSE (Instructor/Engineer to provide drawing no. 6 detail no.)                   |
| 002   | Margolis | 1/20/2023      | 1/26/2023 | The inside condition of the piping configuration is that the flexible isolation and UV are piped in series. Can you please provide a detail outlining the UV piping for this.   | See attached sketch.  | 3/2/2023  | CLOSED  |
| 002   | Margolis | 1/20/2023      | 1/26/2023 | The inside condition shows that all values are Zone values. The current drawings have three all being changed to 3 zone values. Is the fan motor system ready to be converted to constant volume system with this change?   | Yes, these parties have a VFD but the variable speed controls are not there (and there is no bypass in boiler rooms). Instead of doing boiler room modifications to make this a variable speed system we proposed using 3 way valves.   | 3/2/2023  | CLOSED  |
| 002   | Margolis | 1/20/2023      | 1/26/2023 | The inside condition shows that behind the UV's and tubing to discuss there is an open space box across the entire length of the classroom to feed the unit with flexible air. Can you please clarify how the new Category and UV's are to be installed to account for this open air plan?  | Can you please send us pictures of the situation you are referring to.  | 3/2/2023  | INCOMPLETE RESPONSE   |
| 002   | Margolis | 1/20/2023      | 1/26/2023 | For the controls system it shows integration into the old Johnson system. Due to the fact that the HVAC is going to be coming in and overlapping on top of this at some point in the near future the use of this integration is a waste in the district. We propose providing a brand new control platform for the new equipment and using the old control system. All equipment will be copied in place. For the time being before the HVAC comes in to pull into the integration the district will have two systems. Please clarify with the district whether they had no problem with this due to the fact that they do not use the existing system currently. | Democrat's plan for the HVAC is to install a Tridium Niagara 4 system and to replace the Supervisory control from Mercury to Tridium and have one front end interface for all schools.  | 3/2/2023  | CLOSED  |
| 003   | Kalish   | 1/20/2023      | 1/26/2023 | Is HVAC supposed to get cooling as shown?   | No, that condenser rated (B11) is on the schedule was a typo. This room is not getting cooling.   | 2/6/2023  | CLOSED  |
| 003   | Kalish   | 1/20/2023      | 1/26/2023 | Where is electrical coming from with service upgrade covered from scope. Please either provide updated panel schedules, or detail, update electrical drawings. This is for both schools.  | Updated electrical drawings should be sent this week for Margolis and Kalish.   | 2/6/2023  | INCOMPLETE RESPONSE   |
| 003   | Kalish   | 1/20/2023      | 1/26/2023 | The inside condition of the piping configuration is that the flexible isolation and UV are piped in series. Can you please provide a detail outlining the UV piping for this.   | See attached sketch in the response to.   | 2/6/2023  | CLOSED  |
| 003   | Kalish   | 1/20/2023      | 1/26/2023 | The inside condition shows that all values are Zone values. The current drawings have three all being changed to 3 zone values. Is the fan motor system ready to be converted to constant volume system with this change?   | Yes, these parties have a VFD but the variable speed controls are not there (and there is no bypass in boiler rooms). Instead of doing boiler room modifications to make this a variable speed system we proposed using 3 way valves.   | 2/6/2023  | CLOSED  |
| 003   | Kalish   | 1/20/2023      | 1/26/2023 | The Gym at Kalish is showing carbon monoxide detection. Is this supposed to be carbon dioxide?  | No that is a gas flow RTU, so we need the Carbon monoxide sensors. In general, we need occupancy sensors (not CO2) for HVAC and this project.   | 2/6/2023  | CLOSED  |
| 003   | Kalish   | 1/20/2023      | 1/26/2023 | AD201 note 9 - are we responsible for deming a PACM disk and at the utility?  | Please provide drawing references. AD201 is an elevation drawing.   | 2/6/2023  | INCOMPLETE (CONTRACTOR TO CLARIFY)  |



## Phase 1A – MEP Package – RFI Log - To Date (Page – 2 of 3)

| East Ramapo Central School District                 |                  |                |           |  |  |           |   |        |
|---|------------------|----------------|-----------|--|--|-----------|---|--------|
| PHASE 1A - MEP - RFI LOG                            |                  |                |           |  |  |           |   | Jacobs |
| Request For Information: 5 Business Days for Review |                  |                |           |  |  |           |   |        |
| RFI No #  | School           | Date Submitted | Due Date  | GC - Question - 1  | CSArch - Answer - 1  | Returned  | Status  |        |
| 002.1   | Kakiat           | 2/7/2023       | 2/12/2023 | PACM links are in Rooms 136C and 224A. On drawings H002 and H003.  | -  |           | INCOMPLETE (CONTRACTOR TO CLARIFY)  |        |
| 003   | Kakiat           | 1/12/2023      | 1/16/2023 | There is a discrepancy between the new work in classroom A11 for horizontal UV's in classroom 116 & 117 A01113 shows removal or cut corners in rooms 136/137 and the existing UV's are ceiling hung. If there is no laboratory going back, why remove radiation? Also, same drawings. The UV's not shown for Demo in Room 136/137  | Remove ceiling mounted UV's in Classroom 116 and Classroom 117 as indicated in Mechanical drawing M0111A and drawing A01113. Existing radiation rooms to remain.   | 2/6/2023  | CLOSED  |        |
| 003   | Kakiat           | 1/12/2023      | 1/16/2023 | The credit condition shows that behind the UV's and ceiling in classrooms there is an outer plenum box across the entire length of the classroom to feed the coil with outside air. Can you please clarify how the new Ceiling and UV's are to be installed to account for this space or plan on?  | Can you please send us pictures of the situation you are referring to.   | 2/6/2023  | INCOMPLETE RESPONSE   |        |
| 003.1   | Kakiat           | 2/7/2023       | 2/12/2023 | Room 194, the lower is clearly in front of fin tube radiation, and behind a double wall of sheetrock and plywood, not behind a UV. We have looked out the window and there is no tower directly behind the UV. Picture is attached.  |  |           |   |        |
| 003   | Kakiat           | 1/12/2023      | 1/16/2023 | A0113, classrooms 11, 12, & 13 show no demo for ceiling hung UV's. The site conditions show ceiling hung air in place.   | Remove ceiling mounted UV's per Mechanical Drawing M0113.  | 2/6/2023  | Include key notes   |        |
| 005   | Kakiat           | 1/13/2023      | 1/16/2023 | For the control system it shows integration into the old BMS system. Due to the fact that the RFI is going to be coming in and everything on top of this is some open in the near future the cost of this integration is a wait to be decided. We propose providing a hardwired open protocol platform for the new equipment and leaving the old system in place. All protocols will be signed in place. For the time being before the RFI comes in to put it into the external server the district will have two systems. -mean updating with the district enable they had no problem with this due to the fact that they do not use the existing system currently. | Amerson's plan for the CPC is to install a Tridium Niagara 4 system and to replace the supervisory controllers from Metasys to Tridium and have one front and interface for all schools.   | 2/6/2023  | CLOSED  |        |
| 004   | Kakiat & Margets | 2/7/2023       | 2/12/2023 | The project scope includes running new power conduits in BS - 11 from plans to abandon all existing conduit, conductors etc. in place. This will both save time and costs on the overall project installation.   | AMERSON DOES NOT RECOMMEND ABANDONING EXISTING WIRING. ALL WIRING SHOULD BE REMOVED BACK TO SOURCE, CONDUITS CHANGED IN CONCRETE CAN BE ABANDONED AND CUT AND CAPPED FLUSH TO FLOOR. COORDINATE ADDITIONAL PROJECT REQUIREMENTS WITH ARCHITECT.  | 2/25/2023 | INCOMPLETE (ASH TO CLARIFY)   |        |
| 004   | Kakiat & Margets | 2/7/2023       | 2/12/2023 | Please advise if it is acceptable to utilize MC feeder cable for panel board busbars where concealed. This will reduce the quantity of cable trays associated with the feeder installation and provide a cost savings to the district. Conduit & wire would be utilized where exposed in areas such as the boiler rooms or main electrical rooms.  | AMERSON TAKES NO EXCEPTION. ARCHITECT TO ADVISE IF SCHOOL DISTRICT OBJECTS TO MC CABLE IN CONCEALED LOCATIONS.   | 2/25/2023 | INCOMPLETE (ASH TO CLARIFY)   |        |
| 005   | Ramapo HS        | 2/7/2023       | 2/12/2023 | Who is the fire alarm vendor for the districts for all schools in phase 1  | Ramapo HS - Existing fire Alarm Control Panel is Fire- like (boreway) Spring Valley HS - Existing fire Alarm Control Panel is UL - 100 (we do not know who services the system).   | 2/15/2023 | INCOMPLETE RESPONSE   |        |
| 005   | Ramapo HS        | 2/7/2023       | 2/12/2023 | What is the fire alarm if any in the hot water at all districts  | -  |           |   |        |
| 005   | Ramapo HS        | 2/7/2023       | 2/12/2023 | What is the fire alarm for the chilled water systems at the high school  | Alert is provided at Spring Valley HS for this new chiller. We are specifying 200V AC. This matches the design documents from 2007 when the chiller was installed.   | 2/15/2023 | CLOSED  |        |
| 006   | Ramapo HS        | 2/14/2023      | 2/15/2023 | Who is the outside telecom/security vendor utilized by the school or if it is performed in house as it relates to camera and IP installation associated with video dome/camera scope   | The district utilized intralogs solutions for the recent if & security upgrades to Ramapo HS. They worked very closely with SCSO's Director of Security and Cyber Security, Brian Conley, Agent/Director and Coordinator of Safety and Security/SO Tom Caruso (the traditional way). During the upgrade process, please coordinate with them for additional information.   | 2/14/2023 | CLOSED  |        |
| 006   | Ramapo HS        | 2/14/2023      | 2/15/2023 | Provide specifications for lighting fixtures such as 2x4, led, etc. as it is impractical and cost prohibitive to remove, store & reinstall fixtures where new ceilings are being provided.   | The scope is to carefully remove, store, and reinstall all existing fixtures as there is no budget to do new fixtures. Contractor to proceed with scope as indicated on drawings.  | 2/14/2023 | CLOSED  |        |
| 007   | Kakiat           | 2/1/2023       | 2/14/2023 | Please provide a description or detail of a leveraged purchase, including size required.   | Interlock with Model with thread dimensions 1/8x18. See following pages for submittal.   | 3/7/2023  | CLOSED  |        |
| 008   | All 4 schools    | 2/1/2023       | 2/14/2023 | Confirming that Prefabricated and Joist Decking (Wings) can be used on all copper piping installations throughout the work at Kakiat, Margets, Ramapo HS, and Spring Valley HS.  | Wing Prefabricated and Joist Decking (Wings) are acceptable for copper pipe fitting. Installations at the locations noted above. Joist Decking (Wings) and other non-mechanical fitting systems are not permitted.   | 2/1/2023  | CLOSED  |        |
| 009   | Margets          | 2/28/2023      | 2/1/2023  | In RFI-1 for Margets request to be a full-scale lighting RFI-1 is mounted on the roof and to my knowledge, full-scale does not make outdoor rated units.   | RFI-1 should be a Recessed EXISTING Unit. Mechanical schedule to be updated immediately. Data sheet / Specification sheet attached.  | 2/1/2023  | CLOSED  |        |
| 010   | High Schools     | 2/14/2023      | 3/1/2023  | Please advise if it is acceptable to utilize MC feeder cable for panelboard busbars where concealed. This will reduce the quantity of cable trays associated with the feeder installation and provide a cost savings to the district. Conduit & wire would be utilized where exposed in areas such as the boiler rooms or main electrical rooms.   | Yes, MC feeder cable, with equivalent copper conductors to those indicated for conduit and wire feeders will be acceptable where isolated concealed above accessible ceilings. Use only conduit and wire where feeders are run exposed in mechanical and electrical rooms, and storage rooms and other rooms will require protection (see suspended ceiling).  | 3/1/2023  | CLOSED  |        |
| 011   | High Schools     | 2/14/2023      | 3/1/2023  | There are two sets of new W24x30 beams shown to installed below roof level. If possible, can these beams be designed to be installed above roof, essentially no exterior damage. In order to minimize the work in the ceiling and avoid having to install 10' long beams and 40' long beams through the interior space.  | Ramapo HS drawing 1401 dated 3/14/21 does not specify any W16x18 beams. W16x18 members are specified and span less than 10'. Please verify span of roof as per data drawings. We recommend supporting RFI-1 and RFI-2 at the roof and rather than creating an elevated drainage system that would need to span to existing columns. Adding drainage would require additional framing members and become more complicated framing and become more complex.  | 3/7/2023  | Closed. No action was not accepted by USA and will increase overall project cost. |        |
| 012   | Kakiat           | 2/14/2023      | 3/1/2023  | WORK in the nurse's office at Kakiat is called out on the drawings schedule as horizontal, but is shown as vertical with casework on the drawings. On Page M01113.   | Correct that is a typo in the mechanical schedule. This should be a 3000 CFM Vertical Unit Ventilation. Updated drawings will reflect this change.   | 3/7/2023  | CLOSED  |        |
| 013   | Ramapo HS        | 2/15/2023      | 3/6/2023  | This is for Ramapo HS. We would like to ensure the structural steel on the roof (B) rather than below the deck. Trying to make large steel beams inside an enclosed space will be a very difficult task. Putting the steel on the roof will help with framing, cost, and the extent of ceiling removal in the space. All steel beams are available would be galvanized. If you need more info, please let me know.   | Please refer to current drawings dated 2/14/23 which specify different construction than what is shown on the attached sheets. We recommend supporting RFI-1, RFI-2 and DOAS-1 at the roof level rather than creating an elevated drainage system that would need to span to existing columns. Adding drainage would require additional framing members and become more complicated than the proposed sketch. Lateral loads would need to be considered. Make adding horizontal bracing and potentially diagonal knee bracing. Also 1 and RFI-2 (page 2 of this RFI) are located in the mechanical room not on the roof. | 3/1/2023  | CLOSED  |        |
| 014   | Margets          | 3/7/2023       | 3/8/2023  | Requesting details for how the engineer would like the existing boardwalk radiator system modified to be in the new construction UVA. There are 6.6 UVA's with this condition.   | See this table to UVA Piping Schematic detail.   | 3/7/2023  | CLOSED  |        |
| 015   | Kakiat & Margets | 3/1/2023       | 3/6/2023  | Please provide a specification on what is required for hand surface countertops at the 2 elementary schools on the tops and install can be precast   | The technical specifications for the countertops will be provided with the project manual. The scope of design for counter material is one of the following manufacturers: a. Corian Solid Surface, DuPont, DuPont de Nemours, Inc. b. LG Reson, LTD. c. Wilsonart, LLC. Colors and patterns as selected by architect from manufacturer's full range. See drawings dated 2/14/2023 for details.  | 3/15/2023 | CLOSED  |        |
| 016   | Kakiat & Margets | 3/1/2023       | 3/6/2023  | Please provide updated electrical drawings as electrical can be precast in accordance with the most up to date drawings. Existing electrical drawings are dated August 2022.   | See electrical drawings for Margets and Kakiat 15 which are dated 2/24/2023 and were issued to frame via Newforma file transfer on 6/15/2023.  | 3/15/2023 | CLOSED  |        |
| 017   | Spring Valley HS | 3/15/2023      | 3/26/2023 | Please confirm the girl's gym does not have asbestos wall coverings. The girl's gym has the same style plaster on the walls as the boy's gym, and the boy's gym was built later and is noted as having asbestos containing plaster.  |  |           |   |        |
| 018   | Margets          | 3/16/2023      | 3/23/2023 | Please provide the spec of the grille in drawing A032.   | The technical specifications for the Grilles will be provided with the project manual. The technical design product shall be and Richard Smith (grille) or similar for grille. Type "P" for Use Forced air convective products by Proctor, Mobile Fabricators, Rogers Register Company. Grille sizes shall coordinate with lengths and locations of existing fan tube radiation elements, verify width with field conditions.  | 3/23/2023 | CLOSED  |        |
| 019   | Margets          | 3/29/2023      | 4/3/2023  | Please clarify what note DC 8 should be. It is not noted on the drawings.  | DC8 - SELECTIVE CEILING REMOVAL TO ACCOMMODATE MECH WORK. COORDINATE WITH MC FOR LOCATION. REFER TO ARCH DRAWINGS FOR MORE INFORMATION.  | 4/10/2023 | CLOSED  |        |
| 020   | Spring Valley HS | 4/7/2023       | 4/12/2023 | Please confirm via testing that room 136A, Boys Toilet in the girls gym does not have transfer panel asbestos containing piping. This asbestos looks suspiciously similar to the ceiling in storage 136A near the girls toilet room in the girls gym, which is confirmed Francis Panels containing asbestos. This condition may be existing in other bathrooms in the area as well, which we will likely be testing by.  |  |           |   |        |
| 021   | Spring Valley HS | 4/7/2023       | 4/12/2023 | There are concerns reusing the ductwork in the girls gym. The current ductwork goes through steel beams which the new ductwork will be required to be installed through. This may create other issues in the transitions. Also, the girls gym is on grade, so using mass fill is not feasible since the floor will likely not support them. This will require all the items and installation of new ductwork to be completed from below surface, which is much more time consuming and with extra safety requirements.   | The existing ductwork and diffusers are in bad shape and need to be replaced. The existing ductwork transitions through the steel can be reused. Provide new ductwork with new registers/grilles as designed between the steel. Existing ductwork to remain shall be thoroughly cleaned prior to connection with new ductwork and reuse. All ductwork shall be cleaned prior to painting in accordance with the specifications.  | 4/26/2023 | CLOSED  |        |



## Phase 1A – MEP Package – RFI Log - To Date (Page – 3 of 3)

| East Ramapo Central School District                 |                  |                |            |  |  |            |        |  |
|---|------------------|----------------|------------|--|--|------------|--------|--|
| PHASE 1A - MEP - RFI LOG                            |                  |                |            |  |  |            |        |  |
| Request For Information: 5 Business Days for Review |                  |                |            |  |  |            |        |  |
| RFI No #  | School           | Date Submitted | Due Date   | GC - Question - 1  | CSArch - Answer - 1  | Returned   | Status |  |
| 022   | Spring Valley HS | 4/7/2023       | 4/14/2023  | In the weight room the 18V units are mounted high in the air, in hand to access the closets. The 18V-58 unit is located in a corridor space, which add to the safety requirement of the project. 18V-58 is located 15-20 feet in the air in a closet, which can only be access via a baker scaffold. Trane recommends abandoning the unit in place, with the (discrete) cut and cap, the electrical unit off and the piping drained and isolated from the unit. The new unit is requested to be floor mounted per the drawings, so having the existing unit in place will not interfere with the new unit. | Remove all equipment, piping and ductwork as shown on documents. 18V-58 cannot stay in place as it will interfere with new ductwork and connection to OA louver.   | 4/18/2023  | CLOSED |  |
| 023   | Spring Valley HS | 4/7/2023       | 4/14/2023  | Please confirm if any mechanical dome is being done in the offices direct on the stripset below. Currently ceilings are shown as being removed, but I cannot find any drawings showing mechanical dome in this space. Just new work going back. Drawing is M&L. It seem like there is existing ductwork in this space.   | Yes, there is removals of all ductwork located above the ceiling in this area that is associated with EC-12 and EF-12A. A supplemental instruction will be issued.   | 4/18/2023  | CLOSED |  |
| 024   | Kaliat & Margets | 4/12/2023      | 4/19/2023  | Please provide AHRA Reports for Margetts and Kaliat  | The AHRA Reports are available in the Facilities Office located in the District Central Administration Building, located at 100 S. Madison Avenue, Spring Valley, NY 10977. Make an appointment with the Facilities (tel. 845.577.6300) Department to view the AHRA Reports.   | 4/17/2023  | CLOSED |  |
| 025   | Spring Valley HS | 5/9/2023       | 5/16/2023  | Please provide the quantity of glycol (gallons) for the chilled water and hot water systems.   | CLOSED / VAF   |            |        |  |
| 026   | Kaliat & Margets | 10/4/2023      | 10/11/2023 | Please provide the AIA billing requirements for Kaliat and Margetts  | Review the following sections of the Project Manual:<br>Section 012900 - Payment Procedures<br>Section 012973 - Schedule of Values<br>In addition review the following AIA Documents:<br>AIA G732 - Application for Payment (see Project Manual Section 006276.01)<br>AIA G703 - Continuation Sheet (see Project Manual Section 006276.02)   | 11/1/2023  | CLOSED |  |
| 027   | Margets          | 10/18/2023     | 10/25/2023 | VRF cassettes are to be installed in 3 offices. Have the ceilings been tested and do they contain ACM in the following offices:<br>Resource Room 28, Speech Room 28 and Psych Office Room 33   |  |            |        |  |
| 028   | Kaliat           | 10/19/2023     | 10/26/2023 | What is the flow rate for the circuit setters on the baseboard in CIG-01   | Use the same GPM as listed on unit ventilator schedule under heating coil performance. Classroom 108 is 1 of 4 classrooms that will have to be re-piped as shown in SK-1 detail, but the existing UV is not getting replaced. That circuit setter should be set to 9.18 GPM.   | 11/9/2023  | CLOSED |  |
| 029   | All 4 Schools    | 11/9/2023      | 11/16/2023 | Please provide the following information:<br>Owner's Environmental Consultant / Air Monitoring company. Please include: NYCDP filing, email address and ELAP for laboratory to be used for analysis.   |  |            |        |  |
| 030   | Kaliat           | 12/14/2023     | 12/21/2023 | Conflict in drawing regarding louver replacement   | Exterior louvers are required as part of the base bid at no additional cost to the owner. Specification Section 238223 Section 2.3 requires the installation of a new intake louver. Also, refer to the following drawings:<br><br>KES M000 - HVAC/Sheet Metal Notes 18 & 19. Note 18 indicates that exterior louvers are indicated for information only and directs the contractor to the architectural drawings for additional information. Note 19 requires that the louver sizes, locations, and details are coordinated with the GC.<br>Sheet KES M501 UV Schedule Note 2 and Note 6 indicates the use of existing outdoor air louvers unless otherwise noted – It was noted on the architectural drawings.<br><br>The architectural drawings require the clean-out and removal of bird screen how is that to be accomplished without the removal of the existing louver? Proper UV install requires that louver to be present directly and interface with the UV intake, provide a proper seal, along with keeping debris, moisture and vermin out of the building. How is this to be done with the existing louver? | 11/16/2023 | CLOSED |  |
| 031   | All 4 Schools    | 11/15/2023     | 11/22/2023 | Mechanical drawing M501, air cooled condenser schedule calls for ACCUR7 to be 4-ton, single phase. Note on approved submittals from 11/3/23 want ACCUR7 condenser tonnage to be increased to 6 tons which is three phase. Two concerns: U.V.#7 cfm rating is 2000 which may not be enough for 6 tons of cooling. Is there adequate power in the designated ACCU panel for three phase.   | UV Schedule shows UV#7 evaporator coil capacity as 68.41 MBH (5.7 tons) at 2000 CFM. The condensing unit had a nominal condensing coil capacity of 4 tons (1.5 ton range). Most application guides we found advised against a mismatch of this magnitude for indoor comfort/longevity of equipment purposes. If Trane feels they can appropriately install a system with this arrangement and keep equipment under warranty and operating appropriately, we can amend our comment. RP-1 has ample capacity. ACCU-7 is replacing ACCU-27 on RP-1 (ECC library changed rooms), which was designed 3 phase  | 12/27/2023 | CLOSED |  |
| 032   | Kaliat & Margets | 12/27/2023     | 12/29/2023 | Request for full set of CAD drawings for both Kaliat and Margetts schools.   |  |            |        |  |
| 034   | Margets          | 1/2/2024       | 1/9/2024   | Following Rooms on L2113 do not currently have any electrical circuitry, however contract drawings depict a disconnect/reconnect. R28A, O1/P1 & R35, R39 Reading   | Send nameplate, picture of existing sub panel (and panel schedule if available) with the load requested to add onto. It may be possible but engineering team needs to verify capacity of existing panel can handle additional load.<br>What is the intent, is it to lower home run length to UV-6,7,8 or to attempt to get rid of RP-1 entirely? It is very unlikely that existing sub panels will have enough capacity to handle all of the equipment on RP-1, even without alternates included.<br>Agreed 28A,35,39 do not have existing circuit, add 2#12,1#12G for each UV from RP-1.  | 2/7/2024   | CLOSED |  |
| 033.1   | Margets          | 3/5/2024       | 3/12/2024  | Send nameplate, picture of existing sub panel (and panel schedule if available) with the load requested to add onto. It may be possible but engineering team needs to verify capacity of existing panel can handle additional load.<br>What is the intent, is it to lower home run length to UV-6,7,8 or to attempt to get rid of RP-1 entirely? It is very unlikely that existing sub panels will have enough capacity to handle all of the equipment on RP-1, even without alternates included.<br>Agreed 28A,35,39 do not have existing circuit, add 2#12,1#12G for each UV from RP-1.                  | Please also confirm/specify feeder size into each sub panel, maximum amperage on each sub panel (make sure breaker on MDP verifies), and that spares are actually disconnected. Some of the poles labeled "spare" on panel directory have breakers that are turned on. Take off the panel cover and confirm those breakers are disconnected.<br>Does Trane have a preference which panel/poles we connect to or how many units we put on a circuit? (no more than 3). If so, please note preference. If not, engineering team can specify where connection is recommended and what goes on each circuit.   | 3/5/2024   | CLOSED |  |
| 044   | Kaliat & Margets | 1/24/2024      | 1/31/2024  | What style and color Corian shelving counter-tops are needed for Margetts and Kaliat?  | Front: Slightly eased at top, 1 inch laminated bullnose - comply with solid surface manufacturer's written instructions regarding fabrication of bullnose. Color: Corian - Deep Cloud. Coordinate location of architectural grilles in counter with casework.  | 2/9/2024   | CLOSED |  |
| 035   | Kaliat & Margets | 3/23/2024      | 3/30/2024  | Request to re-route condensate from (3) VRF cassettes to custodian closet drain. Pictures and drawings attached for reference.   | Condensate line to be supported and located at CMU wall, coordinate final location with district, provide a 45 degree fitting coming off the CMU wall terminating 12" above sink. Provide permanent label for piping describing the purpose of pipe, "CONDENSATE LINE FOR RM 29, 33, and 38". Hard pipe shall be used in Custodian Closet as it is exposed in an area where damage could occur. Piping sloped at least sloped at least 1/8" per ft. GC to coordinate piping path above ceiling to maintain specified drainage requirements.  | 3/12/2024  | CLOSED |  |
| 036   | Margets          | 3/19/2024      | 3/26/2024  | Request to re-route (3) OA intake from VRF cassettes to (1) combined OA intake located on the roof. This is due to the roof overhang on the side of the building where the OA intakes are on the drawings.   | Re-routing of (3) OA intake from cassettes to (1) combined OA intake located on the roof is acceptable given the following criteria are met:<br>1. A lowered penthouse with a roof curb is provided.<br>2. The roof curb at the lowered penthouse is properly supported and flashed into existing roofing system (roof work must maintain any existing warranties), see details 5 & 6 on sheet MES A450 for additional information.<br>3. Ductwork would have to be rerouted so the rise to the roof is more than 10' from any roof edge.<br>4. Trane to provide preliminary path for ductwork, size and location of lower penthouse on roof for review by design team. Alternatively, OA ductwork can possibly be located to the overhang soffit.   | 3/19/2024  | CLOSED |  |
| 037   | Margets          | 3/13/2024      | 3/20/2024  | Request to re-locate rooftop electrical panel (RP-1) closer to confirmed rooftop equipment (3 Condensers, 1 VRF Condenser).<br>(This will reduce the run from mechanical room to RP 1 and move the panel closer to the condenser on the roof. (see pictures)<br>Proposed RP-1 location field verified with Jacobs.<br>*Classrooms 6,7,8 UVs to be powered from existing panels inside electrical room closet 4. (RFI 31)   |  |            |        |  |



## Phase 1A – MEP Package – Submittal Log – To Date (Page – 1 of 1)


| East Ramapo Central School District              |   |                              |                |                  |               |             |              |        |
|--|---|------------------------------|----------------|------------------|---------------|-------------|--------------|--------|
| Phase 1A MEP - Submittal Log                     |   |                              |                |                  |               |             |              | Jacobs |
| Initial Review: 10 WD/ Re Submittal Review: 7 WD |   |                              |                |                  |               |             |              |        |
| Submittal Spec Section / Submittal No.           | Description   | School                       | Date Submitted | Due Date (10 WD) | Date Returned | Status -000 | Final Status |        |
| 238223/001                                       | Metal Storage Shelving Systems                            | Margetts ES                  | 3/22/2023      | 4/5/2023         | 4/21/2023     | AAN         | AAN          |        |
| 236200/001                                       | Variable Refrigerant Volume Systems (VRF)                 | Kakiat ES                    | 2/13/2023      | 2/27/2023        | 3/31/2023     | AAN         | AAN          |        |
| 236200/002                                       | Variable Refrigerant Volume Systems (VRF)                 | Margetts ES                  | 2/13/2023      | 2/27/2023        | 3/31/2023     | AAN         | AAN          |        |
| 236423/001                                       | Scroll Water Chillers - Air Cooled                        | Spring Valley HS, Ramapo HS  | 3/22/2023      | 4/5/2023         | 4/25/2023     | NET         | NET          |        |
| 237223/001                                       | Packaged Rooftop DOAS Unit with Energy Recovery           | Ramapo HS                    | 3/17/2023      | 3/31/2023        | 4/14/2023     | NET         | NET          |        |
| 237223/002                                       | Packaged Rooftop DOAS Unit with Energy Recovery           | Spring Valley HS             | 3/21/2023      | 4/4/2023         | 4/19/2023     | AAN         | AAN          |        |
| 237413/001                                       | Packaged Rooftop Air Conditioning Units                   | Spring Valley HS, Ramapo HS  | 3/21/2023      | 4/4/2023         | 4/6/2023      | NET         | NET          |        |
| 237416.14/001                                    | Packaged Rooftop Units with Energy Recovery               | Kakiat ES                    | 3/10/2023      | 3/24/2023        | 3/10/2023     | NET         | NET          |        |
| 237416.14/002                                    | Packaged Rooftop Units with Energy Recovery               | Margetts ES, Elmwood ES      | 3/10/2023      | 3/24/2023        | 3/13/2023     | NET         | NET          |        |
| 238129/001                                       | Variable Refrigerant Flow System - Shop Drawings RHS VRF  | Spring Valley HS, Ramapo HS  | 3/13/2023      | 3/27/2023        | 5/11/2023     | AAN         | AAN          |        |
| 238129/002                                       | Variable Refrigerant Flow System - SVHS ACCU-2 VRF System | Spring Valley HS             | 3/30/2023      | 4/13/2023        | 4/19/2023     | AAN         | AAN          |        |
| 238129/003                                       | Variable Refrigerant Flow System - PD ACCU-1              | Ramapo HS                    | 4/2/2023       | 4/16/2023        | 4/19/2023     | AAN         | AAN          |        |
| 238129/004                                       | Variable Refrigerant Flow System - PD ACCU-1              | Spring Valley HS             | 4/2/2023       | 4/16/2023        | 4/21/2023     | AAN         | AAN          |        |
| 238216/002                                       | Coils - Shop Drawings                                     | Spring Valley HS, Ramapo HS  | 4/2/2023       | 4/16/2023        | 4/19/2023     | MCN         | MCN          |        |
| 238216/003                                       | Coils - Resubmittal - Product Data                        | Spring Valley HS, Ramapo HS  | 4/26/2023      | 5/10/2023        | 5/5/2023      | NET         | NET          |        |
| 238219/001                                       | Blower Coil Units   | Spring Valley HS, Ramapo HS  | 3/13/2023      | 3/27/2023        | 5/11/2023     | MCN         | MCN          |        |
| 238223/001                                       | Unit Ventilators  | Margetts ES                  | 2/23/2023      | 3/9/2023         | 2/23/2023     | AAN         | AAN          |        |
| 238223/002                                       | Unit Ventilators  | Kakiat ES, Elmwood ES        | 3/10/2023      | 3/24/2023        | 3/21/2023     | R&R         | R&R          |        |
| 238239/001                                       | Unit Heaters  | Spring Valley HS, Ramapo HS  | 3/30/2023      | 4/13/2023        | 5/10/2023     | AAN         | AAN          |        |
| 237313/001                                       | Air Handling Units  | Spring Valley HS             | 4/3/2023       | 4/17/2023        | 5/8/2023      | R&R         | R&R          |        |
| 237313/002                                       | Air Handling Units  | Ramapo HS                    | 4/3/2023       | 4/17/2023        | 5/8/2023      | R&R         | R&R          |        |
| 105613/002                                       | Metal Storage Shelving Systems                            | Kakiat ES                    | 10/12/2023     | 10/26/2023       | 11/17/2023    | R&R         | R&R          |        |
| 105613/003                                       | Metal Storage Shelving Systems                            | Kakiat ES                    | 12/19/2023     | 1/2/2024         | 2/13/2024     | MCN         | MCN          |        |
| 230910-001                                       | Automatic Temperature Controls                            | Kakiat ES                    | 10/27/2023     | 11/10/2023       | 11/3/2023     | AAN         | AAN          |        |
| 230910-002                                       | Automatic Temperature Controls                            | Margets ES & Elmwood         | 10/30/2023     | 11/13/2023       | 11/14/2023    | AAN         | AAN          |        |
| 236200/003                                       | Variable Refrigerant Volume Systems (VRF)                 | Elmwood ES                   | 10/12/2023     | 10/26/2023       | 11/21/2023    | AAN         | AAN          |        |
| 237313.13-001                                    | Indoor, Basic Air-Handling Units (Kes Mes Ewes)           | Kakiat, Margets & Elmwood ES | 10/6/2023      | 10/20/2023       | 11/3/2023     | NET         | NET          |        |
| 238223/003                                       | Unit Ventilators  | Elmwood ES                   | 10/6/2023      | 10/20/2023       | 11/3/2023     | NET         | NET          |        |
| 262416/001                                       | Panelboards - Product Data                                | Margets ES                   | 12/14/2023     | 12/28/2023       | 12/22/2023    | AAN         | AAN          |        |
| 262416/002                                       | Panelboards - Product Data                                | Kakiat ES                    | 12/15/2023     | 12/29/2023       | 12/22/2023    | AAN         | AAN          |        |
| 260526/001                                       | Grounding & Bonding - Product Data                        | Margets ES                   | 1/12/2024      | 1/26/2024        | 2/7/2024      | AAN         | AAN          |        |
| 260526/002                                       | Grounding & Bonding - Product Data                        | Kakiat ES                    | 1/15/2024      | 1/29/2024        | 2/7/2024      | AAN         | AAN          |        |
| 02081  | Asbestos Abatement Pre-Work Submittals                    | Margetts & Kakiat            | 2/21/2024      | 3/6/2024         |               |             |              |        |
| 089119   | Fixed Louvers   | Margetts                     | 3/6/2024       | 3/20/2024        |               |             |              |        |

## Phase 3A – RFI Log - To Date (Page – 1 of 1)

| East Ramapo Central School District                 |  |                |           |  |   |           | Jacobs |  |
|---|--|----------------|-----------|--|---|-----------|--------|--|
| PHASE 3A - RFI LOG                                  |  |                |           |  |   |           |        |  |
| Request For Information: 5 Business Days for Review |  |                |           |  |   |           |        |  |
| RFI No #  | School   | Date Submitted | Due Date  | GC - Question  | CSArch - Answer   | Returned  | Status |  |
| 001   | All Six Schools                                      | 6/22/2023      | 6/29/2023 | Record RH - MS Teams Meeting 6.7.23  | Responses to questions compiled by Renu/Milburn regarding ERCSD Phase 3A Flooring and review via Microsoft Teams call on 6/7/2023. Original memo prepared by Renu/Milburn is attached for reference.  | 6/28/2023 | CLOSED |  |
| 002   | All Six Schools                                      | 6/22/2023      | 6/29/2023 | In some of the rooms where we are scheduled for floor removal there are large window air conditioner units that are currently supported by casework on schedule to be removed. Please advise who will be removing and reinstalling these units prior to work start. Thank you.   | The district is in the process of removing the window air conditioning units from the work areas  | 6/27/2023 | CLOSED |  |
| 003   | All Six Schools                                      | 6/22/2023      | 6/29/2023 | <b>Clarify Scope at UV Casework</b><br><ul style="list-style-type: none"> <li>Hempstead (Chase w Duct) - Refer to CIC 02GC-002HES for additional information regarding casework at Hempstead ES.</li> <li>Libraries (some have electric - Clarify question/comment, provide additional information.</li> <li>We would like to get exploratory access to one of each type of UV style before work start - maybe hit on the June 19th weekend</li> </ul> <b>Shelving</b><br><ul style="list-style-type: none"> <li>Some (poor condition) Shelving is nailed in - may be best to replace with something off the shelf rather than reinstall. - Provide list of locations where shelving is a concern and contractor recommends replacement for district to evaluate.</li> </ul> <b>Clarify Districts removal scope</b><br><ul style="list-style-type: none"> <li>Smart Boards</li> <li>Classroom Computers</li> <li>Computer towers in IT Rooms</li> <li>GIANT A/C's (that happen to be demo'd casework)</li> </ul> | The district will be removing, storing and reinstalling after construction is complete the following items from the work areas:<br>Floor mounted smart boards (per base bid drawings contractor remove and safely store existing floor mounted supports for smart boards & then reinstall after new flooring installation), classroom computers, and computer towers.<br>Wall mounted smart boards shall remain in classrooms during construction and shall be properly protected.<br>See attached for additional comments in red font.   | 6/28/2023 | CLOSED |  |
| 004   | Eldorado   | 6/22/2023      | 6/29/2023 | Eldorado Steinwells  | The intent is to not abate landings with stone tiles as a finish. Stone finish is to remain on the stair landings and treads.   | 6/29/2023 | CLOSED |  |
| 005   | Hempstead  | 6/22/2023      | 6/29/2023 | The plans call for removal and reinstall of the built in cubbies. the cubbies are not modular and were built in place. Removal would mean complete dismantling. Please advise if this casework could be left in place.   | The "cubbies"/casework should be removed and reinstalled as required by the contract documents. These "cubbies"/casework are substantially built, secured at the top and not to the side walls. Identify any locations where the "cubbies"/casework are in danger of damage from removal so that the district can review these locations in the field.  | 6/28/2023 | CLOSED |  |
| 006   | Eldorado   | 6/22/2023      | 6/29/2023 | Plans call for NO abatement in room 235(254sf) however the conditions are the same throughout the library- room 234 (1906sf) 233 (247sf ) 236 (329sf) 238 (161sf) Faculty room 240 (759 sf) Room 141 is the only room with exposed 9x9's and it does not look like they run under the carpet. See attached photos  | The following is per our offices conversations with Todd McAfee at QuES&T:<br>Room 235 - requires no abatement as it has no ACM flooring (per contract drawings)<br>Room 233 - requires abatement 9x9 ACM tile under carpet (per contract drawings)<br>Room 236 - requires abatement 9x9 ACM tile under carpet (per contract drawings)<br>Room 237 - requires abatement 9x9 ACM tile under carpet (per contract drawings)<br>Room 241 - 9x9 exposed ACM tile, this is an active server room and abatement/construction activities need to be coordinated with the district.<br>NOTE: All other spaces in the Library (Room 234) and Faculty Room 240 have no ACM flooring (existing flooring is either carpet on concrete slab or non-ACM 1'x1' tile on concrete slab)- shown as being abated in contract documents provide credit back to owner. | 6/29/2023 | CLOSED |  |
| 007   | Summit Park  | 6/28/2023      | 7/5/2023  | At Summit Park - Rooms 119 and 120, the flooring does not appear to go under the corian countertop casework, please confirm if this casework can be left in place and the flooring can go up to the casework base. Please see the attached photo. please confer w Gino.  | Per the contract documents existing casework in Classrooms 199 and 120 is to remain in place. Per documents protect during removals, remove any existing resilient base adhered to casework and provide new resilient base.   | 6/28/2023 | CLOSED |  |
| 008   | Hempstead (9x9" tile under Cubbies and Book Shelves) | 6/30/2023      | 7/1/2023  | Per CIC 02 002 HES - on the lower floor: Cubbies and book shelving in rooms is to be removed and reinstalled. at multiple locations we have encountered 9x9" tile underneath removed casework. please advise on how to proceed - would you like to apply our abatement allowance?  | Cubbies removal are part of base scope of work. Owner would like to see pricing for additional abatement. Please refer to CIC 02 005 HES issued for records.  | 7/13/2023 | CLOSED |  |
| 009   | Summit Park (Tan Cove Glue)                          | 6/30/2023      | 7/7/2023  | For Summit Park - Guest indicated black cove base glue was positive for ACM. At a couple test locations we have encountered tan cove base glue, please advise if you would like to re-test sections of the Tan Cove glue locations for ACM in their interest of speeding up work.  | Per CSARCH discussions with Todd McAfee of QuES&T:<br>The positive sample was described on the results by the laboratory as being beige/brown in color meaning that the samples that tested positive had both the older and newer adhesives mixed together. Todd McAfee visited Summit Park on 6/30/2023 and probed several areas and noted a mix of beige and brown adhesive in all areas probed. He did not see enough other differing varieties of material to justify additional sampling. Beige/brown adhesive was identified as ACM and should be treated as such.  | 7/3/2023  | CLOSED |  |
| 010   | Summit Park (Hot Tile under Casework 158 & 159)      | 7/3/2023       | 7/10/2023 | Approx. 35 sf of assumed ACM tile has been uncovered at Summit Park Library (158 & 159) - Please advise on how you would like to proceed.  | Owner would like to see pricing for additional abatement. Please refer to CIC 02-005-SPFS issued for records.   | 7/13/2023 | CLOSED |  |
| 011   | Hempstead  | 7/3/2023       | 7/10/2023 | Please confirm Directions on the items on the following page ( Please see photos for reference)  | Owner would like to see pricing for additional abatement. Please refer to CIC 02-005-HES issued for records.  | 7/13/2023 | CLOSED |  |
| 012   | Hempstead  | 7/20/2023      | 7/27/2023 | Please advise how to proceed at rooms with unusual UV Piping (see the photos below for Reference. Renu recommends mock-ups at atypical locations.-SQ)  | The district has selected the floor mounted fin-tube enclosure, will this eliminate any of the piping concerns? Can mock-up be provided for areas that are still a concern?<br>The school/rooms of concern were provided in a separate e-mail by RENU and are as follows: Eldorado room 102 has pipes coming out of floor, Grandview 119/120 are only 20" to the floor, Hempstead 314, 313, 312 and 311 have pipes running along the floor, Line kiln 105 and 107 have pipes coming out floor, Summit park 190 has fin tube at 24" 183 protruding pipes and 167 pipes coming out floor  | 7/31/2023 | CLOSED |  |
| 013   | All Six Schools                                      | 9/29/2023      | 10/6/2023 | Please advise specifically which transition you would like to replace the currently installed ADA compliant transition   | The Roppe 4177 Tile Carpet Joiner is for use when transitioning from carpet to tile and this is not the application on site and therefore unacceptable. Provide the new surface edge protection between new LVT and existing bluestone stair tread. Contractor to verify in field for height differential of flooring materials and to select appropriate profile from MFR: Schluter-VINPRO, brushed chrome anodized (or approved ADA compliant equal).   | 11/8/2023 | CLOSED |  |



## Phase 3A – Submittal Log – To Date (Page – 1 of 1)

| East Ramapo Central School District              |   |                         |                |                  |               |   |              |
|--|---|-------------------------|----------------|------------------|---------------|---|--------------|
| Phase 3A - Submittal Log                         |   |                         |                |                  |               |  |              |
| Initial Review: 10 WD/ Re Submittal Review: 7 WD |   |                         |                |                  |               |   |              |
| Submittal Spec Section / Submittal No.           | Description   | School                  | Date Submitted | Due Date (10 WD) | Date Returned | Status -000   | Final Status |
| 028200-001                                       | Asbestos Abatement - Waste Permit                                   | Hempstead ES            | 6/21/2023      | 7/5/2023         |               |   |              |
| 028200-002                                       | Logistic & Posting  | Hempstead ES            | 6/21/2023      | 7/5/2023         |               |   |              |
| 028200-003                                       | Updated Schedule & Logistics Drawing                                | Hempstead ES            | 6/26/2023      | 7/10/2023        |               |   |              |
| 028200-004                                       | Updated Phasing Logistics Drawing                                   | Hempstead ES            | 6/28/2023      | 7/12/2023        | 7/9/2023      | NET   | NET          |
| 028200-005                                       | Asbestos Abatement Pre-Work Submittals Sub-IAR                      | Lime Kiln & Summit Park | 7/6/2023       | 7/20/2023        | 7/9/2023      | NET   | NET          |
| 096723-001                                       | Resinous Flooring - Product Data                                    | All Schools             | 6/26/2023      | 7/10/2023        | 6/30/2023     | AAN   | AAN          |
| 096766-001                                       | Gym Floor Rendering Shop Drawings (Fluid Applied Athletic Flooring) | All Schools             | 8/22/2023      | 9/5/2023         |               |   |              |
| 123216-001                                       | Casework - Product Data   | All Schools             | 8/11/2023      | 8/25/2023        |               |   |              |
| 123216-002                                       | Casework - Shop Drawings  | All Schools             | 8/11/2023      | 8/25/2023        |               |   |              |
|  |   |                         |                |                  |               |   |              |
|  |   |                         |                |                  |               |   |              |
|  |   |                         |                |                  |               |   |              |

Daily Construction Field Reports & CIC's are available upon request.

**END OF REPORT**