



MAY 2023

ARPA Monthly Progress Report

for

East Ramapo Central School District

Time Period: 5/16/2023 - 6/6/2023

Issued on 6/6/23 by:

Jacobs Construction Management Services

Table of Contents

1. Construction Update

- a. ARPA Project Overview Statement & Description
- b. ARPA Schedule Overview (Level 3, 4 & 6) v.6 (DRAFT 6-6-23)
- c. ARPA Construction – Financial Update (DRAFT 6-6-23)
- d. Phase 1 - Spring Valley EMERGENCY PROJECT - Flooring Replacement Work
Work has been completed.
- e. Phase 1A - Flooring Abatement & Replacement, Kitchen Hoods & MEP Upgrades
 - i. Flooring Abatement & Replacement (Summer 2022)
Work has been completed. Punch list items are 99% complete.
 - ii. Kitchen Hoods & Equipment Replacement Project (Summer 2022 & 2023)
Phase 1 - Schools are completed (6 schools).
Phase 2 - Summer 2023 Work Schedule (DRAFT 04-11-23)
 - iii. MEP Upgrades
Progress Update
- f. Phase 1B – ADA Upgrades, Doors & Hardware Replacements, Window Replacements
 - i. Progress Update
- g. Phase 2 – MEP Upgrades
 - i. Progress Update
- h. Phase 3A – Flooring Abatement & Replacements
 - i. Progress Update
- i. Phase 3B – Doors & Hardware Replacements
 - i. Progress Update
- j. Phase 3C – MEP Upgrades & ADA Upgrades
 - i. Progress Update
- k. Phase 3D – Window Replacements
 - i. Progress Update

2. Health and Safety Update

- a. Project Safety Reports

3. Appendices

- a. Phase 1A – Change Orders & Payment Application - Status Logs
- b. Kitchen Hoods Phase 2 - Summer 2023 Work Schedule (DRAFT 4-11-23)
- c. Phase Kitchen Hoods - Submittal, Change Orders & Payment Application - Status Logs
- d. Phase 1A MEP – RFI, Submittal - Status Logs



1. Construction Update

a. ARPA Project Overview Statement

Project Statement:

The East Ramapo Central School District has embarked on a major district-wide capital improvement project through the American Rescue Plan Act of 2021 (ARPA) funding, in combination with an Energy Performance Contract (EPC) which together endeavor to expand the program in the following areas:

- 1) District-wide indoor air quality & select thermal envelope improvements*
- 2) District-wide security improvements*
- 3) Hazardous materials removals & replacements*
- 4) District-wide ADA improvements*
- 5) other energy related saving measures*

Project Areas Expanded:

1. Indoor Air Quality & Thermal Envelope Improvements:

MEP Upgrades

- Thirteen (13) Schools

Window Replacements

- Two (2) - Three (3), up to eight (8) Schools

2. Security Improvements:

Doors & Hardware Replacements

- Thirteen (13) Schools

3. Hazardous Materials Removals & Replacements:

Flooring Abatement & Replacements

- Eleven (11) Schools (+/-) 720,000 sf

Kitchen Hood Abatement & Replacements

- Eleven (11) Schools

4. ADA Improvements:

ADA Upgrades

- Up to Thirteen (13) Schools



ARPA Project Description

PHASE 1:

EMERGENCY PROJECT: Flooring Abatement & Replacements - (state contract)

- Spring Valley High School +/- 120,000 sf

PHASE 1A:

Flooring Abatement & Replacements - (state contract)

- **Four (4) Schools +/- 300,000 sf**
 - Elmwood Elementary School
 - Kakiat Elementary School
 - Margetts Elementary School
 - Pomona Middle School

Kitchen Hood Abatement & Replacements - (multi-prime contracts)

- **Phase #1 2022: Six (6) Schools**
 - Chestnut Ridge Elementary School
 - Elmwood Elementary School
 - Hempstead Elementary School
 - Kakiat Elementary School
 - Pomona Middle School
 - Margetts Elementary School
- **Phase #2 2023: Five (5) schools** (Scheduled for Summer 2023)
 - Eldorado Elementary School
 - Fleetwood Elementary School
 - Grandview Elementary School
 - Summit Park Elementary School
 - Lime Kiln Elementary School

MEP Upgrades - (state contract)

- Ramapo HS, Spring Valley HS, Kakiat ES & Margetts ES
- Summer 2024

PHASE 1B:

ADA Upgrades - (multi-prime contracts)

- Ramapo High School
- Spring Valley High School
- Elmwood Elementary School
- Kakiat Elementary School
- Margetts Elementary School
- Spring / Summer 2024

Doors & Hardware Replacements - (state contract)

- Ramapo High School
- Spring Valley High School
- Elmwood Elementary School



- Kakiat Elementary School
- Margetts Elementary School
- Winter / Spring / Summer 2024

Window Replacements - (state contract)

- Up to Two (2) Schools
 - Margetts Elementary School
 - Elmwood Elementary School
- Fall/Winter 2023/Spring 2024

PHASE 2:

MEP Upgrades - (contract type pending)

- Chestnut Ridge - Chiller Replacement
- Summer 2024 – Pending Scope & Budget Evaluation

PHASE 3A:

Flooring Abatement & Replacements - (state contract)

- Six (6) Schools
 - Eldorado Elementary School
 - Fleetwood Elementary School
 - Grandview Elementary School
 - Summit Park Elementary School
 - Hempstead Elementary School
 - Lime Kiln Elementary School
- Includes UV casework & countertop abatement, restoration & replacements
- Summer 2023 (one additional school: Elmwood Summer 2024)

PHASE 3B:

Doors & Hardware Replacements - (state contract)

- Eight (8) remaining Schools
- Spring / Summer / Fall 2024

PHASE 3C:

MEP Upgrades - (contract type pending)

- Seven (7) remaining Schools
- Spring / Summer / Fall 2024 - Pending Scope & Budget Evaluation

ADA Upgrades - (multi-prime contracts)

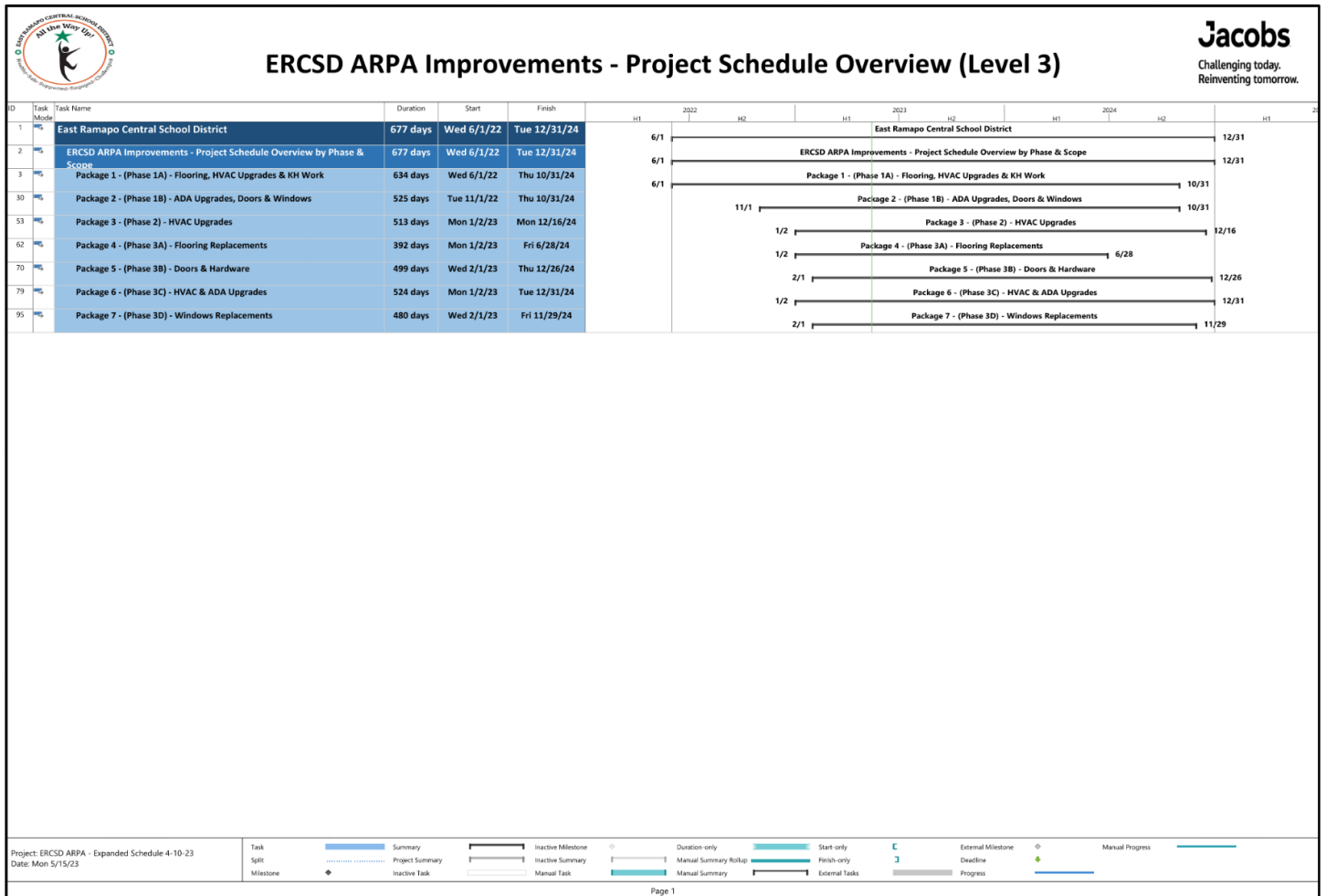
- Eight (8) Schools
- Spring / Summer / Fall 2024 - Pending Scope & Budget Evaluation

PHASE 3D:

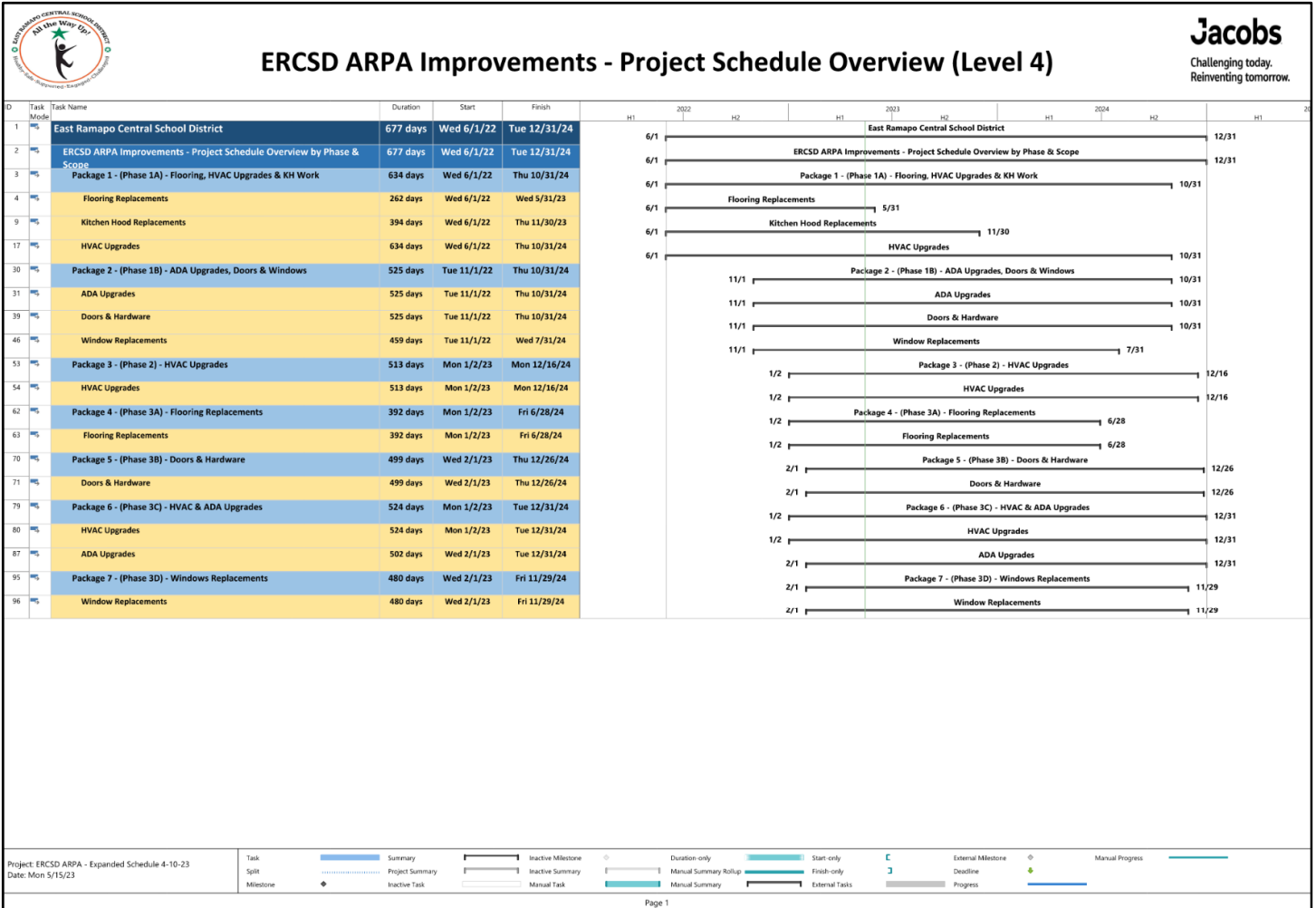
Window Replacements - (contract type pending)

- Up to Five (5) Schools
- Spring / Summer / Fall 2024 - Pending Scope & Budget Evaluation

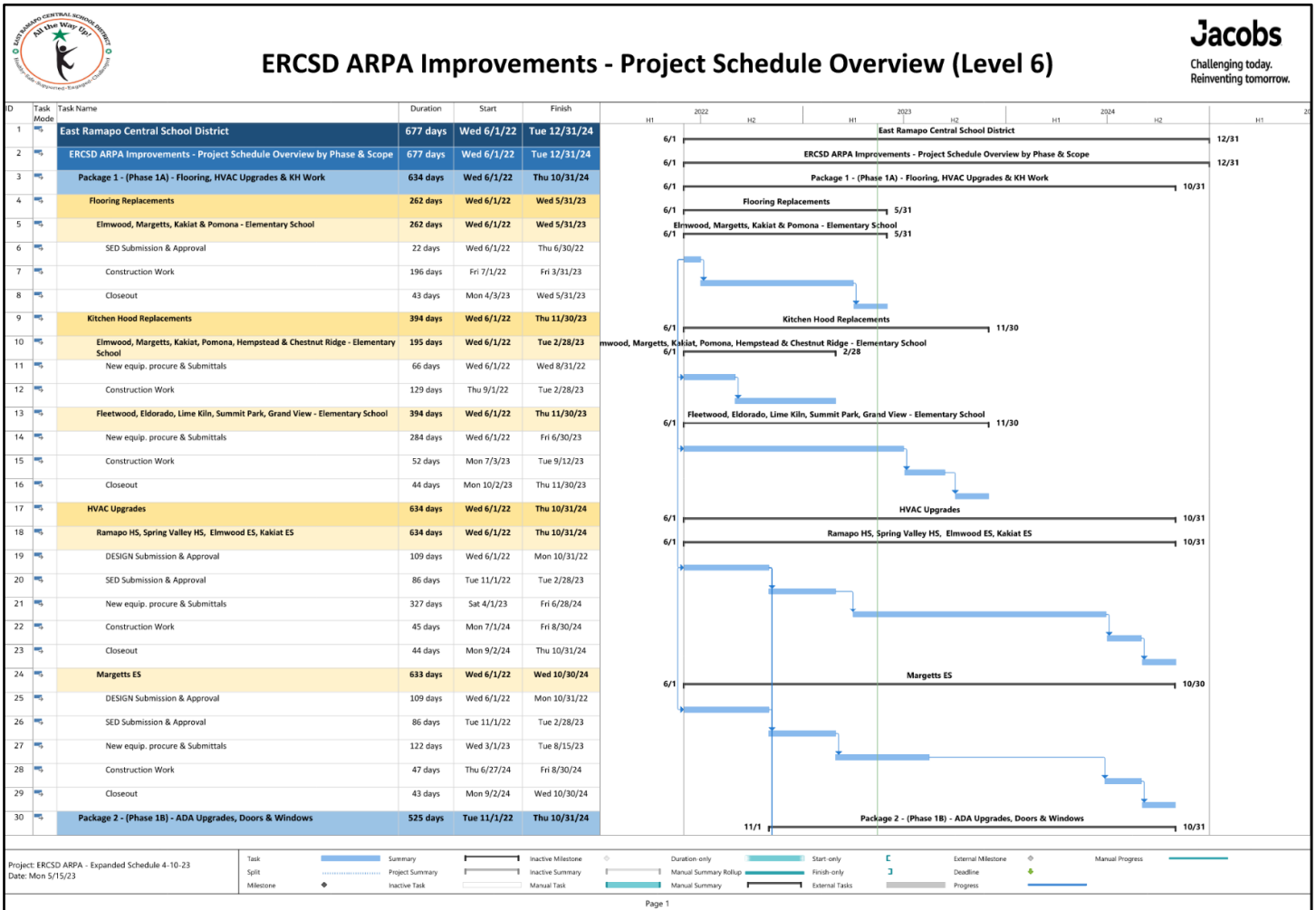
b. Schedule Overview (Level 3) – v.6. DRAFT (6/6/2023)



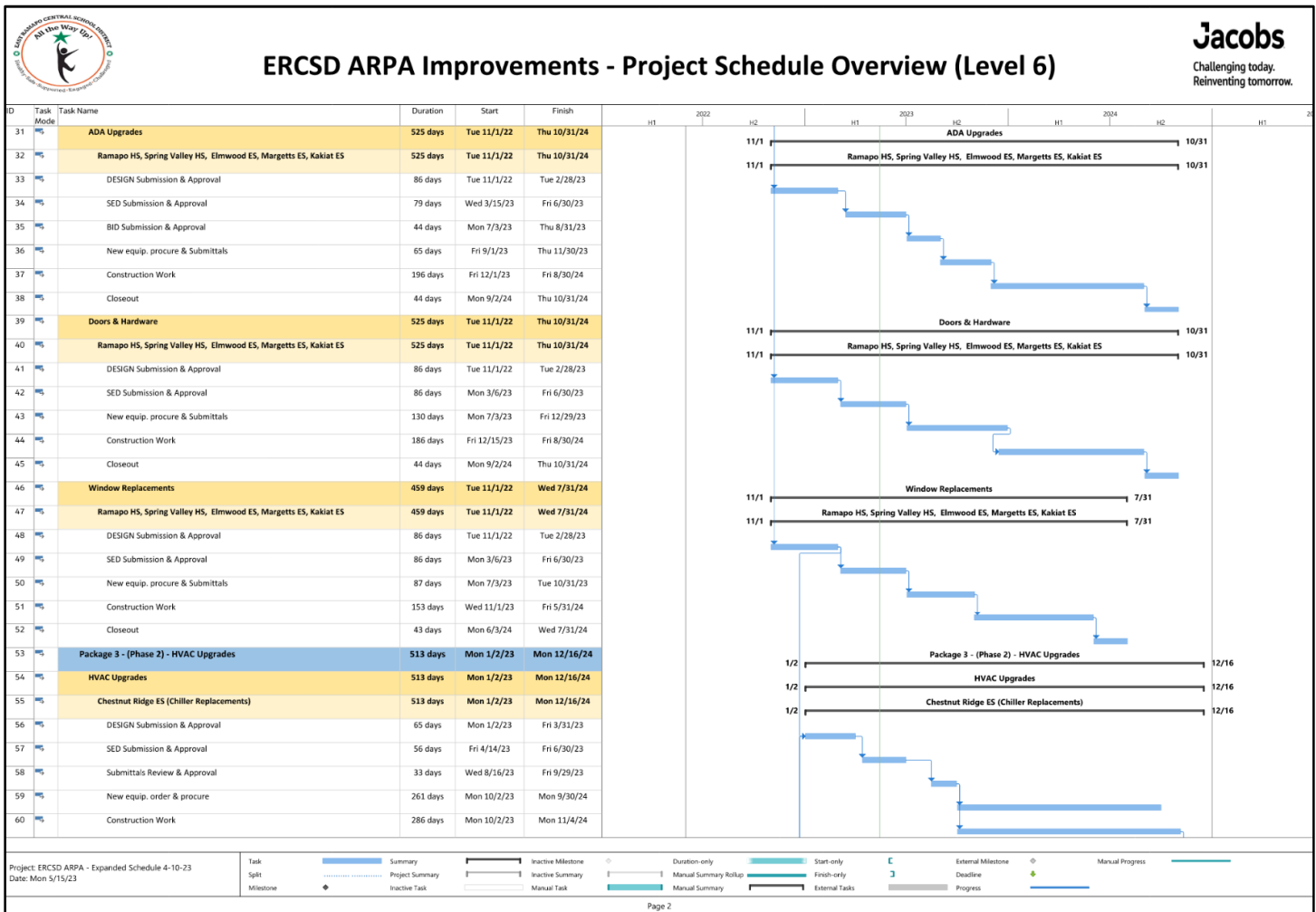
b. ARPA Schedule Overview (Level 4) – v.6. DRAFT (6/6/2023)



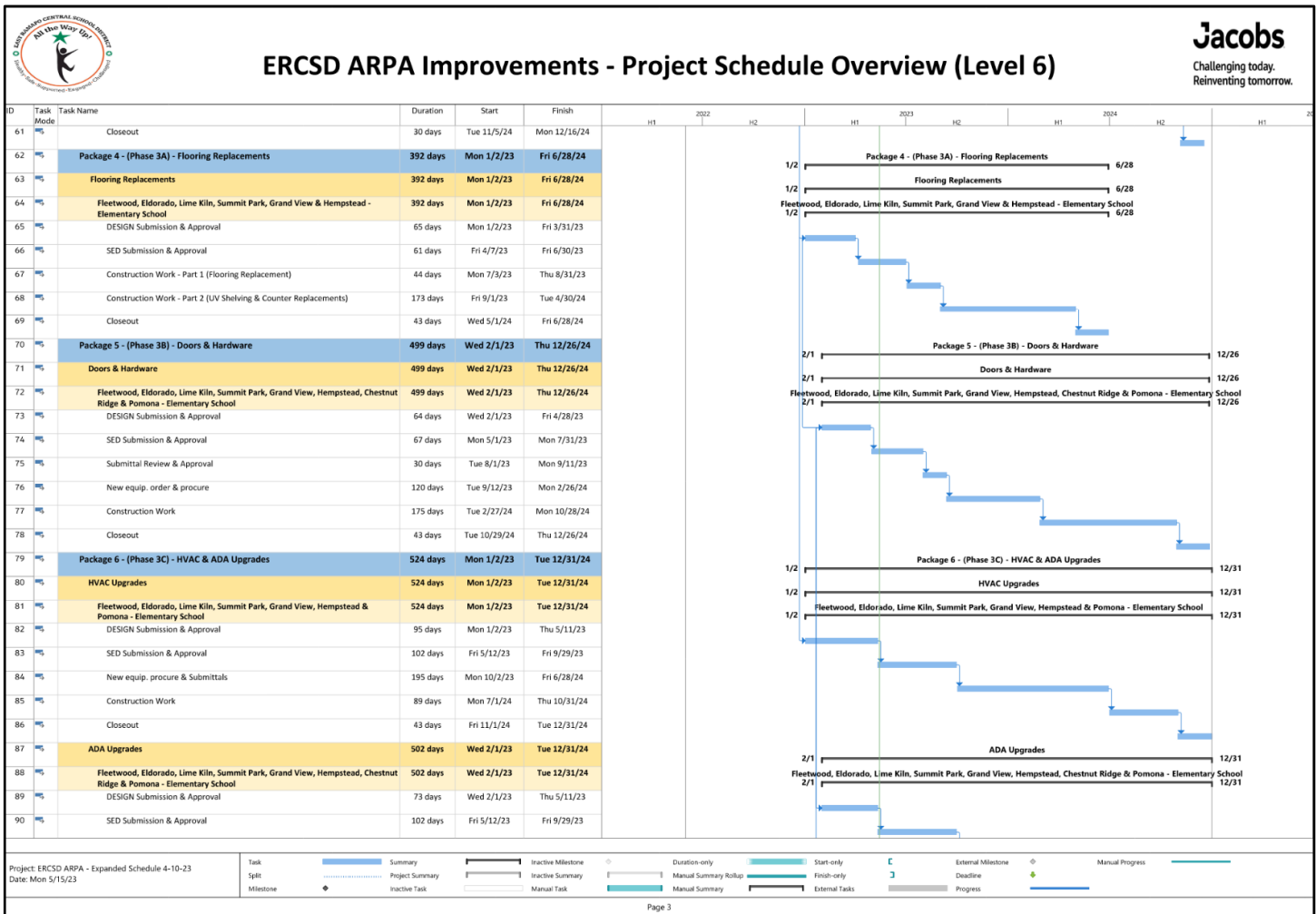
b. Schedule Overview (Level 6) – v.6. DRAFT (6/6/2023) – (Page 1 of 4)



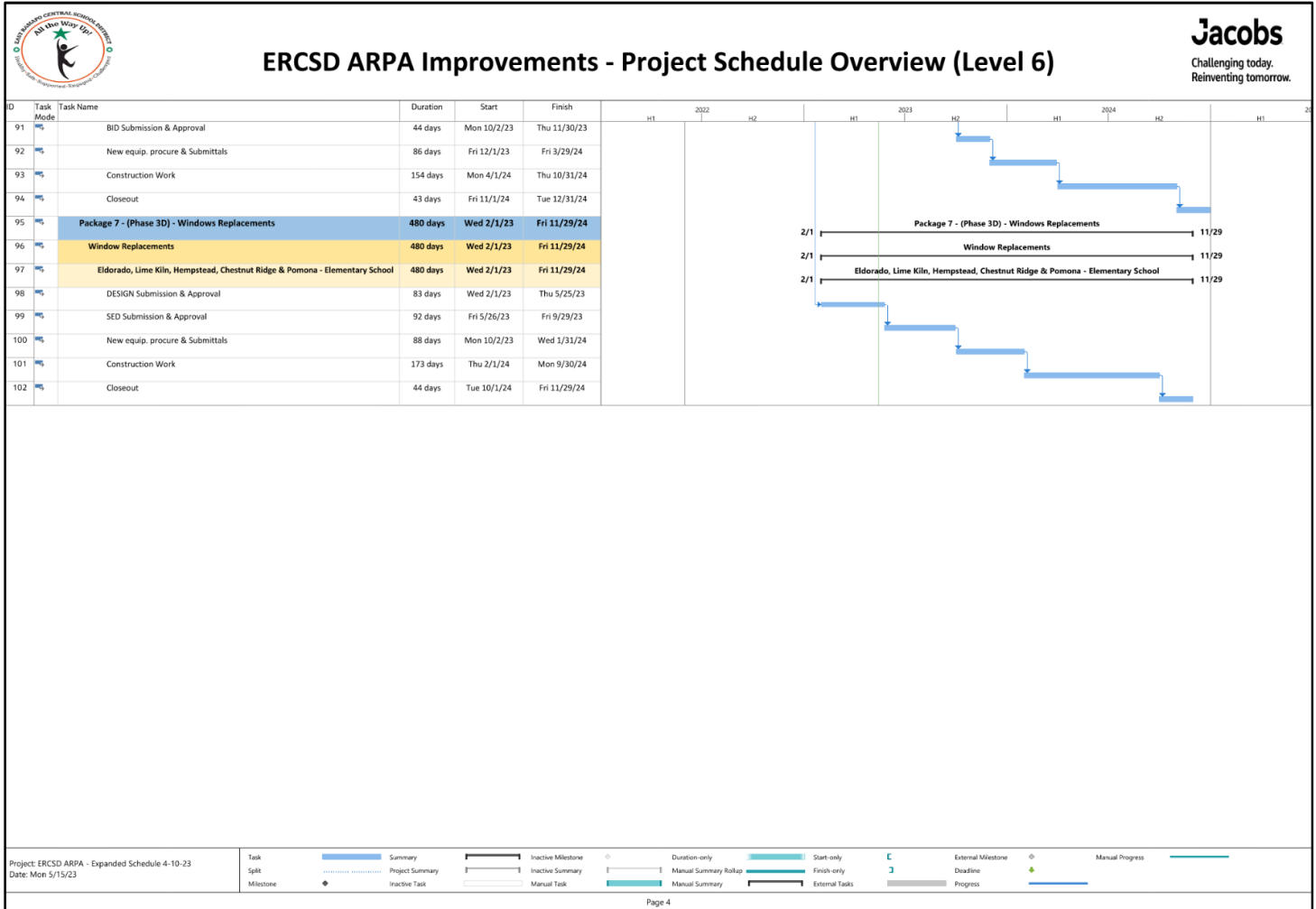
b. Schedule Overview (Level 6) – v.6. DRAFT (6/6/2023) – (Page 2 of 4)



b. Schedule Overview (Level 6) – v.6. DRAFT (6/6/2023) – (Page 3 of 4)



b. Schedule Overview (Level 6) – v.6. DRAFT (6/6/2023) – (Page 4 of 4)





c. **ARPA Construction - Financial Update 6.6.23**

1. **Phase 1 Projects**

i. **Phase 1 Spring Valley EMERGENCY PROJECT - Flooring Replacement Work**

Awarded Contracts:

RENU: \$ 2,326,580.00 Bay Shore State Contract

Milburn: \$ 1,550,005.06 Bay Shore State Contract

COMBINED TOTAL: \$ 3,876,585.06

Change Orders To-Date:

RENU: (\$ 51,540.33)

Milburn: \$ 0.00

COMBINED TOTAL: (\$ 51,540.82)

Paid To-Date:

RENU: \$ 2,275,039.67

Milburn: \$ 1,546,480.59

COMBINED TOTAL: \$ 3,821,520.26

ii. **Phase 1A Flooring Replacement Work (Summer 2022)**

Awarded Contracts:

RENU: \$ 5,630,303.47 Bay Shore State Contract

Milburn: \$ 4,818,037.66 Bay Shore State Contract

COMBINED TOTAL: \$10,448,341.13

Change Orders To-Date:

RENU: \$ 117,880.13 (Approved)

Milburn: \$ 0.0

COMBINED TOTAL: \$ 117,880.13

Paid To-Date:

RENU: \$ 5,539,807.62

Milburn: \$ 4,808,037.66

COMBINED TOTAL: \$ 10,347,845.28

2. **Kitchen Hoods Replacement Project**

i. **Kitchen Hoods & Equipment Replacement Project (Summer 2022)**

Awarded Contracts: (Multi-Prime Bids)

Renu Interiors: \$ 963,000.00 GC-01 (General Construction Contract)

Rockland Electric: \$ 280,000.00 EC-02 (Electrical Contract)

Bertussi Contracting: \$ 1,188,188.00 MC-03 (Mechanical Contract)

Mace Contracting: \$ 558,700.00 PC-04 (Plumbing Contract)

COMBINED TOTAL: \$ 2,989,888.00

Change Orders To-Date

Renu Interiors: \$ 65,087.13 (Approved)

Rockland Electric: \$ 19,081.38 (Approved)

Bertussi Contracting: \$ -

Mace Contracting: \$ -

COMBINED TOTAL: \$ 84,168.51

Paid To-Date:

Renu Interiors: \$ 516,194.54

Rockland Electric: \$ 149,434.39

Bertussi Contracting: \$ 685,303.83

Mace Contracting: \$ 241,822.50

Joe Flihan Co.: \$ 191,209.00

COMBINED TOTAL: \$ 1,783,964.26

Total Combined Paid-To Date: \$ 15,953,329.80

Note: Awarded Contracts & Expenditure's To-Date are within budgetary allocations.

3. **Phase 3A – Flooring Abatement & Replacements**

Awarded Contracts:

RENU: \$5,141,495 Bay Shore State Contract

Milburn: \$5,079,310 Bay Shore State Contract

COMBINED TOTAL: \$ 10,220,805



e. Phase 1A – Kitchen Hoods & Equipment Replacement Project

Progress Update

Phase 1 consisted of 6 Schools that were completed in the Fall – Winter 2022. Phase 2 consists of the 5 remaining Schools that are scheduled to begin in Summer 2023 and be completed in September 2023. Refer to appendices for Kitchen Hoods Schedule.

e. Phase 1A - MEP Upgrades

Progress Update

Construction documents were reviewed and approved by NYSED on February 28, 2023.

TRANE is developing cost proposals including Base Bid and Alternate work for each of the 5 Schools. Trane has reached out to a total of 16 Mechanical contractors, many of which are unavailable due to market saturation.

TRANE has secured a sub-Mechanical contractor to perform the work at (4) schools currently in the Summer of 2024.

Cost proposals for Margetts and Kakiat will be reviewed at our Owner, Architect, Construction Manager Meeting on Thursday, May 18, 2023. We will also have cost projections for Ramapo and Spring Valley High Schools to make the necessary budget reallocations are based on market cost. The intent is to then present and develop a board resolution for the Board of Education meeting scheduled on June 20, 2023 (Margetts and Kakiat).

TRANE proposals for Ramapo and Spring Valley High Schools are targeted to be scheduled for board approval at the July 2023, Board of Education Meeting.

f. Phase 1B - ADA Upgrades, Doors & Hardware Replacements, Window Replacements

Progress Update

Construction documents were reviewed and approved by NYSED on May 2, 2023.

Based on the previously released letter of commitment, C&M Door is proceeding in the development of their cost proposal to include Doors and Hardware replacements at 5 Schools and Window replacement at 2 Schools.

The C&M Door cost proposal was received on May 9, 2023 and is within the budget for the specific scope of work. The work is scheduled for Winter/Spring/Summer 2024.

ADA work will be multi-Prime contract work and will be bid within the next 60 days.

g. Phase 2 – MEP Upgrades

Progress Update

Construction documents were submitted to NYSED on Friday, March 17, 2023 and are expected to be approved by the end of May 2023.

Jacobs submitted the NYSED submission drawings for estimating on May 9, 2023 and estimates are expected to arrive on or after May 17, 2023.

We anticipate that this work will be BID in a multi-prime scenario following the NYSED approval.



h. Phase 3A – Flooring Abatement & Replacements

Progress Update

Construction documents were submitted to NYSED on April 7, 2023 and are pending approval.

Renu & Milburn Cost Proposals were received and approved by Board of Education on May 2, 2023

i. Phase 3B – Doors & Hardware Replacements

Progress Update

Construction documents were submitted to NYSED on May 12, 2023.

Based on the previously released letter of commitment, Sun Rise Door is proceeding in the development of their cost proposal to include Doors & Hardware replacements at 8 Schools.

The Cost proposal is expected to be received by the end of June 2023. Anticipated work start date is expected in Spring 2024 and extend into the Fall of 2024.

j. Phase 3C – ADA Upgrades

Progress Update

Construction documents are targeted for submission to NYSED on June 16, 2023.

ADA work will be multi-Prime contract work and will be BID once NYSED approval is received.

k. Phase 3D – Window Replacements

Progress Update

Construction documents are targeted for submission to NYSED on June 30, 2023.

This scope of work will be evaluated in the next 60 – 90 days with the district to determine the extent of the work that will be pursued.



2. Health and Safety Update

a. Project Safety Report

<u>Safety</u>	<u>This Period</u> <u>5/16/23-</u> <u>6/6/23</u>	<u>Cumulative</u> <u>To-Date</u>
First AID Cases:	0	0
Recordable Injuries:	0	0
Recordable Illnesses:	0	0
Lost Workdays Cases:	0	0
<u>Project Total Injuries/Cases Reported:</u>	0	0
<u>OSHA Incident Rate (OIR):</u>	0	0

Note: OSHA incident Rate = Total number of injuries & illnesses multiplied by 3,874 (OSHA LaborHours) divided by the number of hours worked by all employee.



Appendices

- a. Phase 1A – Change Orders & Payment Applications - Status Logs
- b. Kitchen Hoods Phase 2 - Summer 2023 Work Schedule (DRAFT 4-11-23)
- c. Phase Kitchen Hoods - RFI, Submittal, Change Orders & Payment Application - Status Logs
- d. Phase 1A MEP – RFI, Submittal - Status Logs



Phase 1A – Flooring Abatement - Pay Request's Summary - To Date

Jacobs

Pay Requests Summary Till Date

Project Name : Phase 1A - Flooring Abatement

Sr. No.	Contract	Number	Period To	From Company	Current Payment Due	Status	Remarks
1	1A - 01 - GC - MILBURN - NEW YORK STATE - 001 - RENU Interiors	1A - 01 - GC - MILBURN - NEW YORK STATE - 001 - PA# 0001	7/31/2022	RENU Interiors	\$2,702,224.80	Billed	-
2	1A - 01 - GC - MILBURN - NEW YORK STATE - 001 - RENU Interiors	1A - 01 - GC - MILBURN - NEW YORK STATE - 001 - PA# 0002	8/31/2022	RENU Interiors	\$2,050,195.04	Billed	-
3	1A - 01 - GC - MILBURN - NEW YORK STATE - 001 - RENU Interiors	1A - 01 - GC - MILBURN - NEW YORK STATE - 001 - PA# 0003	9/30/2022	RENU Interiors	\$27,181.95	Billed	-
4	1A - 01 - GC - MILBURN - NEW YORK STATE - 001 - RENU Interiors	1A - 01 - GC - MILBURN - NEW YORK STATE - 001 - PA# 0004	10/31/2022	RENU Interiors	\$28,435.87	Billed	-
5	1A - 01 - GC - RENU - BAYSHORE - 002 - RENU Interiors	1A - 01 - GC - RENU - BAYSHORE - 002 - PA# 0001	7/31/2022	RENU Interiors	\$1,796,575.36	Billed	-
6	1A - 01 - GC - RENU - BAYSHORE - 002 - RENU Interiors	1A - 01 - GC - RENU - BAYSHORE - 002 - PA# 0002	8/31/2022	RENU Interiors	\$2,244,478.10	Billed	-
7	1A - 01 - GC - RENU - BAYSHORE - 002 - RENU Interiors	1A - 01 - GC - RENU - BAYSHORE - 002 - PA# 0003	9/30/2022	RENU Interiors	\$1,103,764.15	Billed	-
8	1A - 01 - GC - RENU - BAYSHORE - 002 - RENU Interiors	1A - 01 - GC - RENU - BAYSHORE - 002 - PA# 0004	10/31/2022	RENU Interiors	\$120,449.30	Billed	-
9	1A - 01 - GC - RENU - BAYSHORE - 002 - RENU Interiors	1A - 01 - GC - RENU - BAYSHORE - 002 - PA# 0005	3/31/2023	RENU Interiors	\$274,540.71	Billed	
							Total Items: 8
					\$10,347,845.28	Total Billed Amount (\$)	
					\$0.00	Total Open Amount (\$)	
					\$10,347,845.28	Grand Total (Billed + Open) Amount (\$)	

powered by
kahua™

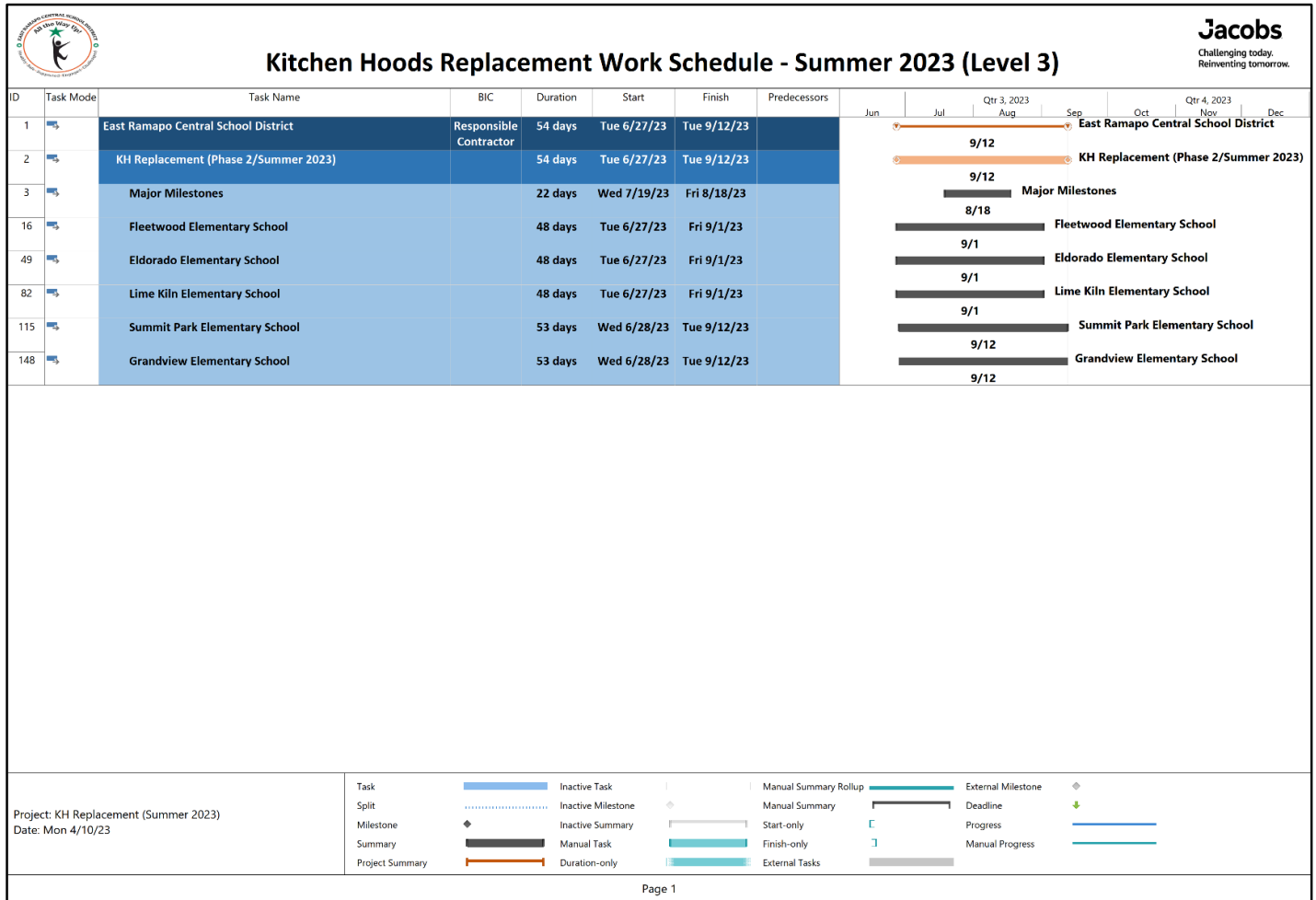
Page 1 of 1



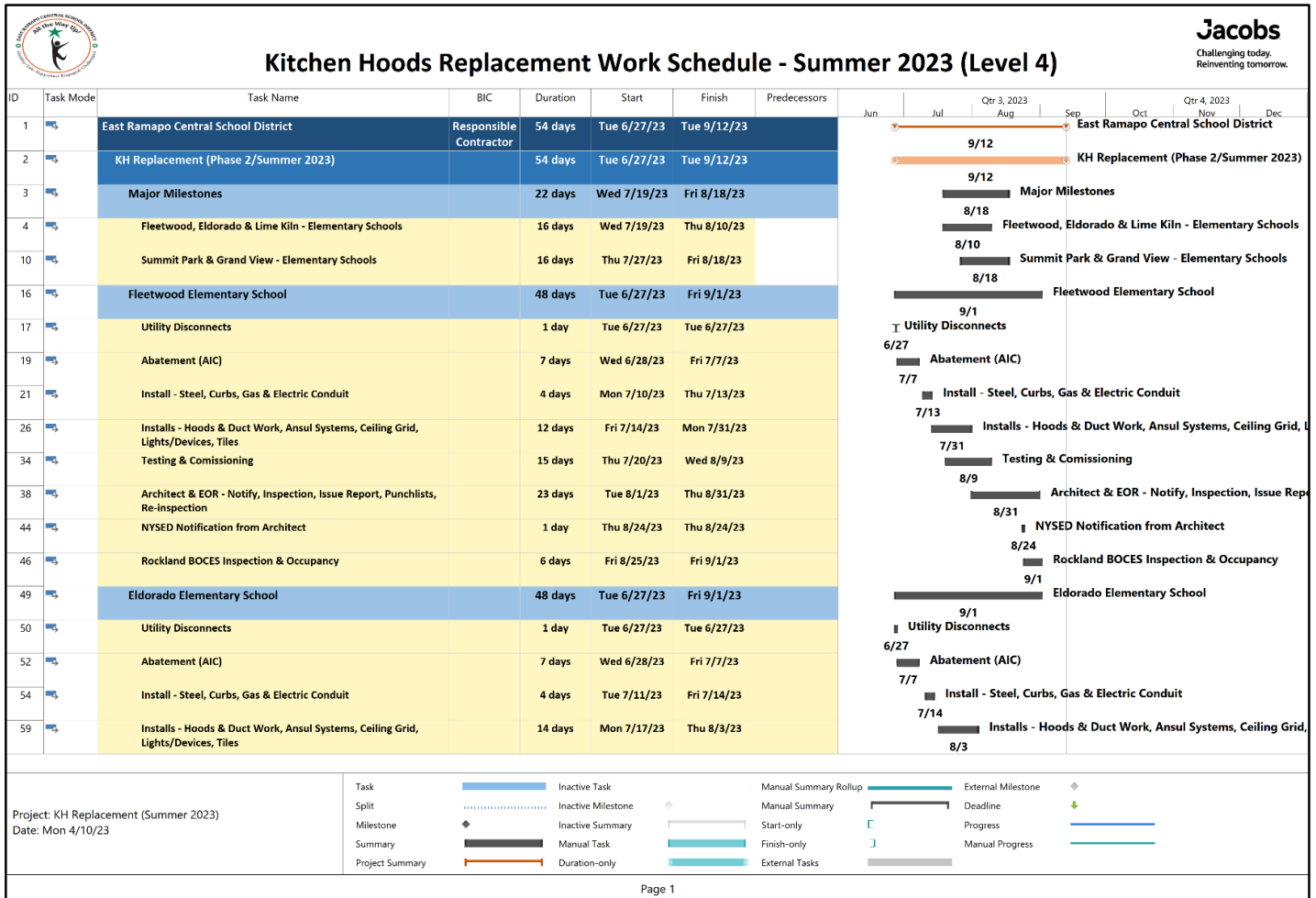
Phase 1A – Flooring Abatement – Change Order's Summary - To Date

Change Orders Summary Till Date								
Project Name : Phase 1A - Flooring Abatement								
Sr. No.	Contract	Number	Description	Workflow Status	Total	Current Contract Amount	Status	Remarks
1	1A - 01 - GC - RENU - BAYSHORE - 062 - RENU Interiors	0001	Kakiat - PCO # 8	Locked	\$33,120.00	\$5,743,274.47	Approved	-
2	1A - 01 - GC - RENU - BAYSHORE - 062 - RENU Interiors	0002	Elmwood - PCO # 6	Locked	\$7,054.00	\$5,743,274.47	Approved	-
3	1A - 01 - GC - RENU - BAYSHORE - 062 - RENU Interiors	0003	Elmwood - PCO # 11	Locked	\$5,433.00	\$5,743,274.47	Approved	-
4	1A - 01 - GC - RENU - BAYSHORE - 062 - RENU Interiors	0004	Pomona - PCO # 5	Locked	\$15,612.00	\$5,743,274.47	Approved	-
5	1A - 01 - GC - RENU - BAYSHORE - 062 - RENU Interiors	0005	Pomona - PCO # 10	Locked	\$17,952.00	\$5,743,274.47	Approved	-
6	1A - 01 - GC - RENU - BAYSHORE - 062 - RENU Interiors	0006	Margetta - PCO # 14	Locked	\$33,600.00	\$5,743,274.47	Approved	-
7	1A - 01 - GC - RENU - BAYSHORE - 062 - RENU Interiors	0007	Margetta - PCO # 24 - Change Order - Plumbing	Locked	\$1,440.00	\$5,744,714.47	Approved	-
8	1A - 01 - GC - RENU - BAYSHORE - 062 - RENU Interiors	0008	Elmwood - PCO # 22 - Change Order - Plumbing	Locked	\$2,160.00	\$5,745,874.47	Approved	-
9	1A - 01 - GC - RENU - BAYSHORE - 062 - RENU Interiors	0012	Kakiat Steam Academy 4 Science Rooms	Locked	\$1,309.13	\$5,746,183.60	Approved	-
10	1A - 01 - GC - RENU - BAYSHORE - 062 - RENU Interiors	0009	Kakiat - PCO # 26 - Move funds between schools	Sent for Review	\$148,398.00	\$5,746,183.60	Open	-
11	1A - 01 - GC - RENU - BAYSHORE - 062 - RENU Interiors	0010	Kakiat - PCO # 23 - Change Order - Plumbing	Sent for Review	\$9,360.00	\$5,746,183.60	Open	-
12	1A - 01 - GC - RENU - BAYSHORE - 062 - RENU Interiors	0011	Pomona - PCO # 25 - Change Order - Plumbing	Sent for Review	\$44,640.00	\$5,746,183.60	Open	-
						Total Items: 1		
						\$117,880.13	Total Approved Change Order's Amount (\$)	

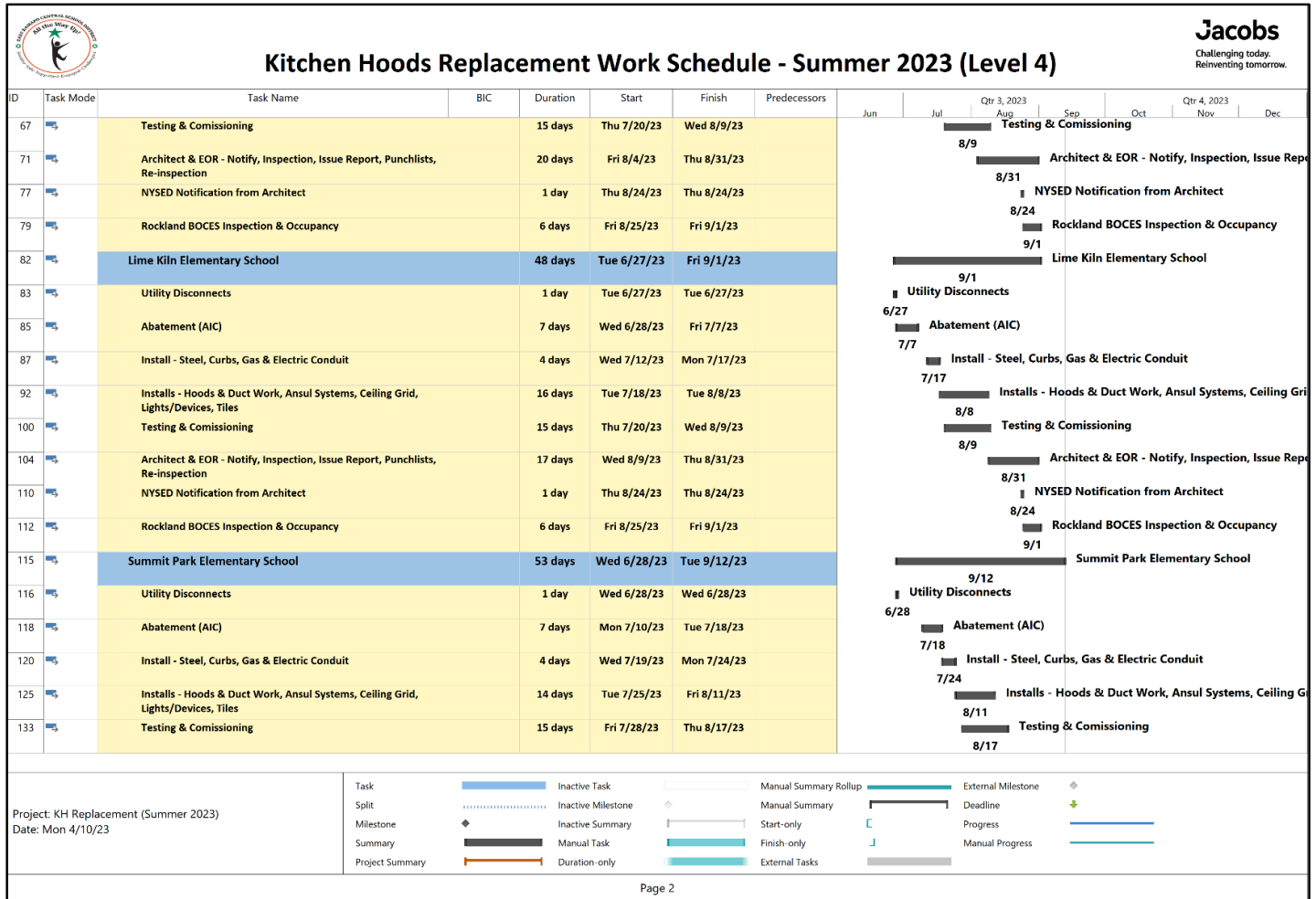
KH Master Schedule (Level – 3) – Summer 2023 (Draft – 4.11.2023)



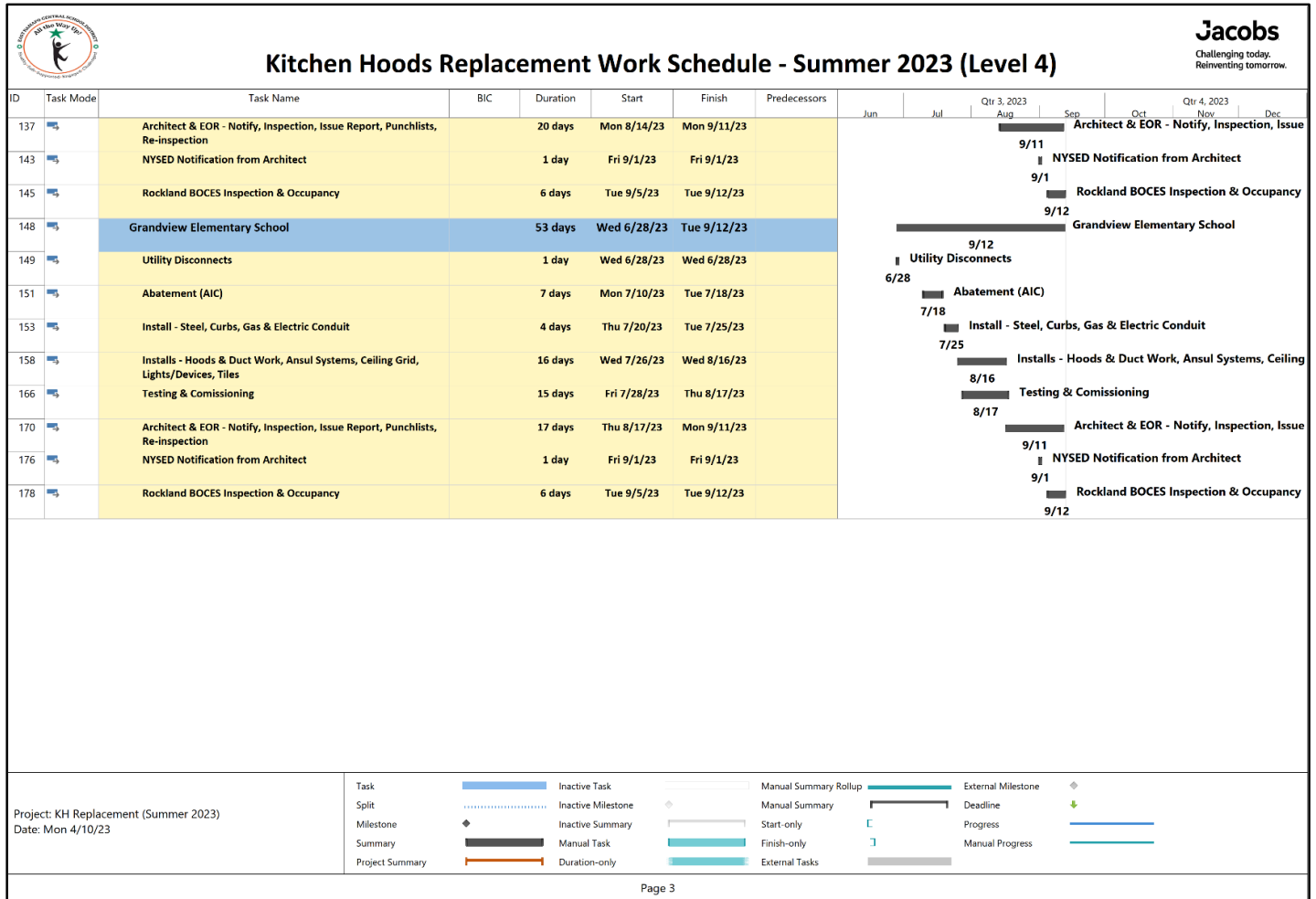
KH Master Schedule (Level – 4) – Summer 2023 (Draft – 4.11.2023) – Page 1 of 3



KH Master Schedule (Level – 4) – Summer 2023 (Draft – 4.11.2023) – Page 2 of 3



KH Master Schedule (Level – 4) – Summer 2023 (Draft – 4.11.2023) – Page 3 of 3






Jacobs

Phase KH - Kitchen Hoods Replacement – Submittal Register – Page 01 of 03


<div> <div> Jacobs Challenging today. Reinventing tomorrow. </div> <div> Project Name : EAST RAMAPO CENTRAL SCHOOL DISTRICT Sub - Project Name : KITCHEN HOODS REPLACEMENT Client Name : EAST RAMAPO CENTRAL SCHOOL DISTRICT </div> <div> </div> </div>										
Submittals Required as per Contract							Submissions on Kahua Till Date			
Sr. No.	Spec. No.	Spec. Name	Contract	Contractor Name	Clause No.	Submittal Name	Submitted by Prime Contractor till date (Yes/No)	Submittal No.	Approved by CSArch	Remarks
1	24119	Selective Demolition	General Construction	Renu	1.5	Informational Submittals (Proposed Protection Measures, Schedule of Selective Demolition Activities, Pre-demolition Photographs or Video, Warranties)	Incomplete	KH-01-GC-0021	No	Safety Protocol Policies and Procedures submitted. Under Review by CSArch
2	28213	Asbestos Abatement			1.03 (Section A & B)	Documentation (Certificates, Licenses, Respiratory Protection Program, NYS DCL Certificate etc.)	Yes	KH-03-GC-001	Yes	
					1.03 (Section C & D)	Documentation upon Final Close out of Project	No	-	No	
3	51200	Structural Steel Framing			1.3	Action Submittals (Product Data, Shop Drawings, WPS & PQIR, Delegated Design Submittal)	Yes	KH-03-GC-002	Yes	
					1.6	Informational Submittals (Qualification Data, Plant Compatibility Certificates, Mill & Product Test Reports, Survey of existing conditions, field quality-control reports)	Incomplete	-	Incomplete	
4	61000	Rough Carpentry			1.1	Product Data & Research/Evaluation Reports	Yes	KH-01-GC-0022	No	CSArch Remarks - Review & Resubmit
5	61600	Sheathing			1.3	Product Data	No	-	No	
6	72100	Thermal Insulation			1.3	Action Submittals (Product Data)	No	-	No	
					1.4	Informational Submittals (Installer's Certification, Product Test Reports, Research Reports)	No	-	No	
					1.4	Action Submittals (Product Data, Shop Drawings)	No	-	No	
7	75323	EPDM Roofing			1.5	Informational Submittals (Qualification Data, Manufacturer Certificates, Product Test Reports, Evaluation & Field Test Reports)	No	-	No	
					1.6	Closeout Submittals - A. Maintenance Data: For roofing system to include in maintenance manuals. B. Certified statement from roofing roof membrane manufacturer stating that existing roof warranty has not been affected by Work performed under this Section.	No	-	No	
					1.3	Action Submittals (Product Data, Shop Drawings, Samples)	No	-	No	
8	77100	Roof Specialties			1.4	Informational Submittals (Qualification Data, Certificates, Test Reports, Sample Warranty)	No	-	No	
					1.5	Closeout Submittals - Maintenance Data: For roofing specialties to include in maintenance manuals.	No	-	No	
9	77200	Roof Accessories			1.1	Action Submittals (Product Data, Shop Drawings, Samples, Delegated-Design Submittal)	Incomplete	KH-01-GC-0024	No	TIS 1303 Pourable Sealer 5.10 Product Data (All Roof Penetrations) submitted. Under Review by CSArch
					1.5	Informational Submittals (Coordination Drawings, Sample Warranty)	No	-	No	
					1.6	Closeout Submittals - Operation and Maintenance Data: for roof accessories to include in operation and maintenance manuals.	No	-	No	
10	78413	Penetration Firestopping			1.4	Action Submittals (Product Data & Schedule)	Yes	KH - 01 - GC - 0017	No	Product Data submitted. Under Review by CSArch
					1.5	Informational Submittals (Qualification Data, Test Reports)	No	-	No	
					1.6	Closeout Submittals - Installer Certificates: From installer indicating that penetration firestopping systems have been installed in compliance with requirements and manufacturer's written instructions.	No	-	No	
11	79200	Joint Sealants			1.2	Action Submittals (Product Data, Samples for Initial Selection, Joint Sealant Schedule)	Yes	KH - 01 - GC - 0018	No	Product Data submitted. Under review by CSArch
					1.3	Informational Submittals (Test and Evaluation Reports)	No	-	No	
					1.4	Closeout Submittals - A. Warranty Documentation; 2. Manufacturer's special warranties; 2. Installer's special warranties.	No	-	No	
12	83113	Access Doors and Frames			1.2	Action Submittals (Product Data, Samples, Shop Drawings, Product Schedule)	Yes	KH - 01 - GC - 0023	No	Product Data and Shop Drawing Under Review by CSArch
					1.3	Informational Submittals (Qualification Data)	No	-	No	
					1.4	Closeout Submittals - Record Documents: For fire rated doors, list of applicable room name and number in which access door is located.	No	-	No	
13	92216	Non-Structural Metal Framing			1.7	Action Submittals (Product Data)	No	KH-01-GC-0019	No	Under Review by CSArch
					1.3	Informational Submittals (Product Certificates, Evaluation Reports)	No	-	No	
14	92900	Gypsum Board Type X			1.2	Action Submittals (Product Data, Samples)	Yes	KH-01-GC-004	Yes	
					1.4	Action Submittals (Product Data, Samples)	Yes	KH-03-GC-003	Yes	
15	95113	Acoustical Panel Ceilings			1.3	Informational Submittals (Coordinated Drawings, Product Test Reports, Evaluation & Field Quality Control Reports)	No	-	No	



Phase KH - Kitchen Hoods Replacement – Submittal Register – Page 02 of 03

Jacobs Challenging today. Reinventing tomorrow.		Project Name : EAST RAMAPO CENTRAL SCHOOL DISTRICT								
		Sub - Project Name : KITCHEN HOODS REPLACEMENT								
		Client Name : EAST RAMAPO CENTRAL SCHOOL DISTRICT								
Submittals Required as per Contract							Submissions on Kahua Till Date			
Sr. No.	Spec. No.	Spec. Name	Contract	Contractor Name	Clause No.	Submittal Name	Submitted by Prime Contractor Till Date (Yes/No)	Submittal No.	Approved by CSArch	Remarks
15	95113	Acoustical Panel Ceilings	General Construction	Renu	1.6	Closeout Submittals - Maintenance Data: For finishes to include in maintenance manuals.	No		No	
					1.7	Maintenance Material Submittals - A. Furnish extra materials that match products installed and that are packaged with protective covering for storage and identified with labels describing contents. 1. Acoustical Ceiling Units: full-size panels equal to 2 percent of quantity installed. 2. Subsystem/system components: Quantity of each exposed component equal to 2 percent of quantity installed. 3. Hold-Down Clips: equal to 2 percent of quantity installed.	No	-	No	
	1.4	Action Submittals (Product Data, Samples, SDS, Product Schedule)			Yes	KI-03-GC-0020	No	Under Review by CSArch		
16	99123	Interior Painting			1.5	Maintenance Material Submittals - A. furnish extra materials that match products installed and that are packaged with protective covering for storage and identified with labels describing contents. 1. Paint Products: 5 percent, but not less than 1 gal. of each material and color applied.	No	-	No	
			1.7	Action Submittals (Product Data)	Yes	KH-04-PC-004	Yes			
17	220529	Supports & Sleeves	Plumbing Construction	Mace	1.4	Product Data, Manufacturer Installation Instructions & Shop Drawings	Incomplete	KH-04-PC-003	Incomplete	Only product data submitted
18	220553	Plumbing Identification			1.5	Action Submittals - Product Data: For each type of the following: 1. Piping specifications. 2. Valves, indicate pressure rating, capacity, settings, and electrical connection data of selected models. 3. Pressure regulators, indicate pressure ratings and capacities. 4. Isolation fittings.	Incomplete	KH-04-PC-005, 006, 007	Incomplete	KH-04-PC-005, 006, 007 - Submittal was submitted for pipes & valves
19	221613	Natural Gas Piping			1.6	Closeout Submittals - Operation and Maintenance Data: For motorized gas valves and pressure regulators to include in emergency, operation, and maintenance manuals.	No	-	No	
					1.2	Action Submittals (Product Data, tag, Label schedule)	No	-	No	N/A
20	230553	Mechanical Identification	Mechanical Construction	Bertussi	1.3	A. Qualification Data: AISC or NCB certification. B. Written statement of coordination with sheetmetal contractor. C. Written statement of coordination with piping contractor. D. Written statement of acceptance of location and quantity of air and water balancing devices. E. Final TAB reports.	No	-	No	KH-03-MC-005 - Submittal was submitted with sample formats of TAB reports
21	230593	Testing, Adjusting and Balancing			1.2	Action Submittals (Product data)	Yes	KI-03-MC-001, 004	Yes	
22	230713	Duct Insulation			1.2	Action Submittals (Product Data, Shop drawings)	Yes	KH-03-MC-002, 003, 0016, 0017	Yes	Shops submitted and approved for 6 schools
23	233113	Metal Ductwork			1.3	Informational Submittals (Coordination Drawings)	Yes		Yes	
24	233300	Air Duct Accessories			1.2	Action Submittals (Product data)	No	-	No	N/A
					1.3	Closeout Submittals - Operation and Maintenance Data: for air duct accessories to include in operation and maintenance manuals.	No	-	No	
25	233423	Power Ventilators			1.2	Action Submittals (Product data)	No	-	No	N/A
			1.3	Closeout Submittals - Operation and Maintenance Data: for power ventilators to include in emergency, operation, and maintenance manuals.	No	-	No			
26	233534	FIBER WELDED RECTANGULAR GREASE DUCTS	Mechanical Construction	Bertussi	1.3	Action Submittals (Product Data, Shop Drawings)	Incomplete	KI-03-MC-0056, 0017	Incomplete	Shops submitted and approved for 6 schools
					1.4	Informational Submittals (Welding Certificate, Coordination Drawings)	Incomplete		Incomplete	
27	233713	Grillers, Registers & Diffusers			1.2	Action Submittals (Product Data, Samples)	Yes	KH-04-MC-0010	Yes	Only Grill required.
28	233813	Commercial Kitchen Hoods			1.4	Action Submittals (Product Data, Shop Drawings)	Yes	KH-04-MC-0014	Yes	
					1.5	Informational Submittals (Welding Certificate, Coordination Drawings)	Incomplete	KH-04-MC-0016, 0017	Incomplete	Shops submitted and approved for 6 schools
					1.6	Maintenance Material Submittals - See below Snapshot	No	-	No	
29	260519	Low-Voltage Electrical Power Conductors & Cables	Electrical Construction	Rockland	1.3	Product Data, Product Schedule, Qualification Data, Field quality-control reports	Incomplete	KH-02-EC-0020	Incomplete	Only product data submitted
30	260526	Grounding & Bonding for Electrical Systems			1.2	Submittals - See below Snapshot	No	-	No	
31	260529	Hangers and Supports for Electrical Systems			1.2	Product data, Shop Drawings, Coordination Drawings	Incomplete	KH-02-EC-0017	Incomplete	Only product data submitted
32	260533	Raceways and Boxes for Electrical Systems			1.3	Product data, Coordination Drawings	Incomplete	KH-02-EC-0019, 0021	Incomplete	Raceways not submitted, boxes & conduits - submitted. Only Product Data Submitted
33	260544	Sleeves and Sleeve Seals for Electrical Raceways and Cabling			1.2	Product Data	No	-	No	
34	260553	Identification for Electrical Systems			1.2	Product Data, Identification Schedule, Delegated Design submittal: For Arch. flash hazard study	No	-	No	
35	262726	Wiring Devices			1.2	Product Data, Samples	No	-	No	

Phase KH - Kitchen Hoods Replacement – Submittal Register – Page 03 of 03

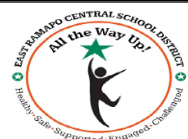


**Challenging today.
Reinventing tomorrow.**

Project Name : EAST RAMAPO CENTRAL SCHOOL DISTRICT

Sub - Project Name : KITCHEN HOODS REPLACEMENT

Client Name : EAST RAMAPO CENTRAL SCHOOL DISTRICT



Submittals Required as per Contract						Submissions on Kahua Till Date			
Spec. No.	Spec. Name	Contract	Contractor Name	Clause No.	Submittal Name	Submitted by Prime Contractor till date (Yes/No)	Submittal No.	Approved by CSArch	Remarks
262816	Enclosed Switches and Circuit Breakers	Electrical	Rockland	1.2	Product Data, Shop Drawings	No	-	No	
				1.3	Maintenance Material Submittals - See below Snapshot	No	-	No	
265119	LED Interior Lighting			1.3	Product Data, Shop Drawings, Product Schedule	Incomplete	KH-02-EC-0001	Incomplete	Only product data submitted
283100	Fire Detection and Alarm- ADD #2			1.3	Product Data, Shop Drawings	Yes	KH-02-EC-0009	Yes	
				1.4	Closureout Submittals (Operation & Maintenance Data) - See below Snapshot	No	-	No	

Note : Red Text represents Non Submission of Submittals Till date

LEGEND: For number mentioned below, refer serial number in above summary table & refer the snapshots respectively for Sepcification requirements

A. Operation and Maintenance Data: For fire-alarm systems and components to include in emergency, operation, and maintenance manuals. Include the following:

RE DETECTION AND ALARM 283100 - 2

Arch Project No. 209-2003 East Ramapo Central School District Kitchen Hood Replacement Project

- Comply with the "Records" section of the "Inspection, Testing and Maintenance" chapter in NFPA 72.
- Provide "Fire Alarm and Emergency Communications System Record of Completion Documents" according to the "Completion Documents" Article in the "Documentation" section of the "Fundamentals" chapter in NFPA 72.
- Complete wiring diagrams showing connections between all devices and equipment. Each conductor shall be numbered at every junction point with indication of origination and termination points.
- Riser diagram.
- Device addresses.
- Record copy of site-specific software. This software shall also be in an electronic format to allow an alternate Authorized Distributor to add, change, or modify in any way, the existing system data base.
- Provide "Inspection and Testing Form" according to the "Inspection, Testing and Maintenance" chapter in NFPA 72, and include the following:
 - Equipment tested.
 - Frequency of testing of installed components.
 - Frequency of inspection of installed components.
 - Requirements and recommendations related to results of maintenance.
 - Manufacturer's user training manuals.
- Manufacturer's required maintenance related to system warranty requirements.
- Abbreviated operating instructions for mounting at fire-alarm control unit and each annunciator unit.

1.3 MAINTENANCE MATERIAL SUBMITTALS

A. Furnish extra materials that match products installed and that are packaged with protective covering for storage and identified with labels describing contents.

ENCLOSED SWITCHES AND CIRCUIT BREAKERS 262816 - 1

CSArch 209-2003 East Ramapo Central School District Kitchen Hood Replacement Project

- Fuses: Equal to 10 percent of quantity installed for each size and type, but no fewer than three of each size and type.
- Fuse Pullers: Two for each size and type.

1.6 MAINTENANCE MATERIAL SUBMITTALS

A. Furnish extra materials that match products installed and that are packaged with protective covering for storage and identified with labels describing contents.

- Grease Filters/Baffles: One complete set(s).

02--> C. Documentation with confirmation signature of Consultant's representative of the following shall be provided by the Abatement Contractor at the final closureout of the project.

- Testing of barriers and enclosure systems using smoke tubes shall be performed prior to the beginning of abatement activities and at least once a day thereafter until satisfactory clearance air monitoring results have been achieved.
- Inspection of all plastic barriers.
- Removal of all polyethylene barriers.
- Consultant's inspections prior to encapsulation.
- Removal of waste materials.
- Decontamination of equipment (list items).
- Consultant's final inspection/final air tests.

D. The Abatement Contractor shall provide records of all project information, to include the following which shall be submitted upon completion of the project and prior to approval of 028213 028213 - 7

the Abatement Contractor's payment application:

- The location and description of the abatement project.
- The name, address, and social security number of the person(s) who supervised the asbestos project.
- Certified payroll documentation Pursuant to Article 8, Section 200 of the NYS Labor Law.
- Copies of EPA/NYS/DOH Asbestos Certificates for all Workers and Supervisors employed on the Project.
- Copies of Medical Approval and Respirator Fit testing for all Asbestos Workers and Supervisors employed on the Project.
- Copies of Abatement Contractor's Daily Sign-in Sheets & Logs for persons entering and leaving the work area. Title 12 NYCRR Part 55 7.3.
- Copies of Abatement Contractor's personal air sampling laboratory results.
- The amounts and type of asbestos materials that was removed, enclosed, encapsulated, or abated.
- The name and address of the deposit or waste disposal site or sites where the asbestos waste materials were deposited or disposed of and all related manifests, receipts and other documentation associated with the disposal of asbestos waste.
- The name and address of any transporters used to transport waste and all related manifests, receipts and other documentation associated with the transport of asbestos waste.
- All other information that may be required by state, federal or local regulations.
- Copy of the Supervisor's Daily Project Log of events as described in 1.08 B, above.

Phase 1A – MEP Package – RFI Log - To Date (Page – 1 of 3)

Current Date		6/5/2023		East Ramapo Central School District				
TOTAL		025		PHASE 1A - MEP - RFI LOG				
Due < 2 DAYS								
OVERDUE								
Request For Information: 5 Business Days for Review								
RFI No #	School	Date Submitted	Due Date	GC - Question - 1	CSArch - Answer - 1	Returned	Status	
001	Kaliot	1/13/2023	1/20/2023	Drawing MES AD203- Demo note DA11 calls for the existing lower assembly to be removed and for the lintel to remain. Detail 3 in Drawing S702 shows new lintels. Is a new lintel required only where new UVs are being installed where one did not exist previously?	New lintels are for new openings (where no UV existed before).	1/23/2023	CLOSED	
001	Kaliot	1/13/2023	1/20/2023	Is there a specification for the new brick to be installed at new openings?	Brick color, size, and texture to match existing with no observable difference in finish from 10 feet away. See attached spec section for veneer masonry for additional information.	1/23/2023	CLOSED	
001	Kaliot	1/13/2023	1/20/2023	With most of the Refrigeration scope removed, can the condensing units for the AC units that are to remain be installed on the exterior ground floor? All new condensing units will be set on concrete pads. This will eliminate needing to run refrigeration piping and interlock wiring up through the school and also eliminate the need to do asbestos abatement on the roof for new pads and penetrations.	Energia does not recommend this, the condensers were intended to work as heat pumps and in the winter, they would need to be above snow line, being this location is right outside classroom windows noise will be an issue. Vandalism is also a concern for ground mounted equipment.	1/23/2023	CLOSED	
001	Kaliot	1/13/2023	1/20/2023	With most of the refrigeration scope removed will the demolition of the existing electrical switchboard still be required? Can the power for the remaining new loads be handled from existing panels or can a new panel be tapped off the existing?	Scope of work indicated is to keep existing switchboard and tap for connection to new panelboard to serve new circuits.	1/23/2023	CLOSED	
001	Kaliot	1/13/2023	1/20/2023	In the areas where ceiling removal and reinstallation is required has the ceiling material and materials above the ceiling been confirmed as Non-ACM areas?	Yes, refer to report and Appendix A of the report.	1/23/2023	CLOSED	
001	Kaliot	1/13/2023	1/20/2023	Is any of the existing piping insulation ACM or PACM?	Gray Multilaid Elbow Insulation was confirmed Non-ACM. Refer to report and Appendix A of the report.	1/23/2023	CLOSED	
001	Kaliot	1/13/2023	1/20/2023	Kaliot: What happens for UV in Storage 001C Dwg F0115 & F115	Demolition of existing air handler feeding the gym. This is replaced with RTU.	1/23/2023	CLOSED	
001	Kaliot	1/13/2023	1/20/2023	Clarify that Trane does not intend to replace Louver based on mechanical drawings and contrary to architects.	-		INCOMPLETE	
001	Kaliot	1/13/2023	1/20/2023	Reuse existing electrical feeders	If referring to reusing branch circuits feeding existing UVs, Energia does not recommend reusing circuits. The condition of existing panelboards appears to be poor and new equipment should be connected to new circuits and panelboards to ensure resilient installation.	1/23/2023	INCOMPLETE RESPONSE (Architect/Engineer to provide drawing no. & detail no.)	
	Kaliot	1/13/2023	1/20/2023	Kaliot Missing UV in electrical drawings- Elec shows 74, mech shows 75 Electrical drawings skip 54 on the schedule, and skips 54 on the drawings.	Unit UV-54 added to electrical scope.	1/23/2023	INCOMPLETE RESPONSE (Architect/Engineer to provide addendum sketch)	
	Kaliot	1/13/2023	1/20/2023	For UV replacements, can wall boxes be reused & not replaced?	In general, we want to design around new backboxes being required and if the existing can be reused, the contractor should submit an RFI at that time indicating existing box conditions and size being adequate for reuse. I would not design around reusing something like that (small cost).	1/23/2023	CLOSED	
001	Kaliot	1/13/2023	1/20/2023	What possibilities, if any, exist for work access to indoor work areas PRIOR to conclusion of classes in June? For example, could some, any classroom wings be made available in May?	We have asked the district this question and have not heard back from the district yet. In order for the district to understand the type of access Trane is looking for prior to the end of the school year can Trane provide a narrative of the type of construction activities they anticipate performing prior to the end of the school year?	1/23/2023	INCOMPLETE RESPONSE (No classrooms are available for construction outside of the summer window)	
001	Margets	1/13/2023	1/20/2023	Drawing MES AD203- Demo note DA11 calls for the existing lower assembly to be removed and for the lintel to remain. Detail 3 in Drawing S702 shows new lintels. Is a new lintel required only where new UVs are being installed where one did not exist previously? From a time aspect, Trane recommends cleaning and reusing existing louvers.	New lintels are for new openings (where no UV existed before).	1/23/2023	CLOSED	
001	Margets	1/13/2023	1/20/2023	Is there a specification for the new brick to be installed at new openings?	See response for Kaliot.	1/23/2023		
001	Margets	1/13/2023	1/20/2023	With most of the Refrigeration scope removed, can the condensing units for the AC units that are to remain be installed on the exterior ground floor? All new condensing units will be set on concrete pads. This will eliminate needing to run refrigeration piping and interlock wiring up through the school and also eliminate the need to do asbestos abatement on the roof for new pads and penetrations.	Similar response to that at Kaliot, Energia does not recommend.	1/23/2023		
001	Margets	1/13/2023	1/20/2023	With most of the refrigeration scope removed will the demolition of the existing electrical switchboard still be required? Can the power for the remaining new loads be handled from existing panels or can a new panel be tapped off the existing?	Switchboard replacement not required. Will revise scope to indicate connection to existing switchboard.	1/23/2023	INCOMPLETE RESPONSE	
001	Margets	1/13/2023	1/20/2023	In the areas where ceiling removal and reinstallation is required has the ceiling material and materials above the ceiling been confirmed as Non-ACM areas?	Yes, refer to report and Appendix A of the report.	1/23/2023	CLOSED	
001	Margets	1/13/2023	1/20/2023	Is any of the existing piping insulation ACM or PACM?	Yes, refer to report and Appendix J of the report.	1/23/2023	CLOSED	
001	Margets	1/13/2023	1/20/2023	With the AC being removed, and the possibility of not requiring an electrical service upgrade, can the existing feeders to the UVs be re-used rather than demolish and replaced?	We do not recommend reusing circuits. The condition of existing panelboards appears to be poor and new equipment should be connected to new circuits and panelboards to ensure resilient installation.	1/23/2023	INCOMPLETE RESPONSE (Architect/Engineer to provide drawing no. & detail no.)	
001	Margets	1/13/2023	1/20/2023	Please confirm if there are 3 existing UVs that are not shown on MDS12 that need to be removed	These are new Unit Ventilators.	1/23/2023	INCOMPLETE RESPONSE	
001	Margets	1/13/2023	1/20/2023	For UV replacements, can wall boxes be reused & not replaced?	In general, we want to design around new backboxes being required and if the existing can be reused, the contractor should submit an RFI at that time indicating existing box conditions and size being adequate for reuse. I would not design around reusing something like that (small cost).	1/23/2023	CLOSED	
001	Margets	1/13/2023	1/20/2023	What possibilities, if any, exist for work access to indoor work areas PRIOR to conclusion of classes in June? For example, could some, any classroom wings be made available in May?	We have asked the district this question and have not heard back from the district yet. In order for the district to understand the type of access Trane is looking for prior to the end of the school year can Trane provide a narrative of the type of construction activities they anticipate performing prior to the end of the school year?	1/23/2023	INCOMPLETE RESPONSE (No classrooms are available for construction outside of the summer window)	
002	Margets	1/23/2023	1/30/2023	The current drawings show demolition of a AHU. The AHU is currently a multiuse that serves the gym, Cafeteria, and the corridor wall wash for the windows. The new drawings don't show anything going back to serve the corridor wall wash. What is the plan for the corridor ventilation and heat?	-			
002	Margets	1/23/2023	1/30/2023	Classroom 6,7&8 have 21" radiators with glass. Can you please provide a detail on how you want to handle the window modification in this space?	The windows for Classrooms 6, 7 and 8 are to be replaced in a future phase of work and the window (if wall) is scheduled to be raised to accommodate the UV height at that time. Can the install of the UVs in these spaces be held off until the install of the windows are completed in these classrooms?	3/2/2023	INCOMPLETE RESPONSE (Architect/Engineer to provide drawing no. & detail no.)	
002	Margets	1/23/2023	1/30/2023	The onsite condition of the piping configuration is that the finitube radiation and UV are piped in series. Can you please provide a detail outlining the UV piping for this.	See attached sketch	3/2/2023	CLOSED	
002	Margets	1/23/2023	1/30/2023	The onsite condition shows that all valves are 2way valves. The current drawings have these all being changed to 3 way valves. Is the hot water system ready to be converted to constant volume system with this change?	Yes, these pumps have a VFD but the variable speed controls are not there (and there is no bypass in Boiler Room). Instead of doing boiler room modifications to make this a variable speed system we proposed using 3-way valves.	3/2/2023	CLOSED	
002	Margets	1/23/2023	1/30/2023	The onsite condition shows that behind the UV's and cabinetry in classroom there is an open plenum box across the entire length of the classroom to feed the unit with Outside Air. Can you please clarify how the new Cabinetry and UV's are to be installed to account for this open air plenum?	Can you please send us pictures of the situation you are referring to.	3/2/2023	INCOMPLETE RESPONSE	

Phase 1A – MEP Package – RFI Log - To Date (Page – 2 of 3)

Current Date		6/5/2023		East Ramapo Central School District					<div>Jacobs</div>	
TOTAL		025		PHASE 1A - MEP - RFI LOG						
Due < 2 DAYS										
OVERDUE										
Request For Information: 5 Business Days for Review										
RFI No #	School	Date Submitted	Due Date	GC - Question - 1	CSArch - Answer - 1	Returned	Status			
002	Margets	3/23/2023	3/30/2023	For the controls system it shows integration into the old Johnson system. Due to the fact that the EPC is going to be coming in and overlaying on top of this at some point in the near future the cost of this integration is a waste to the district. We propose providing a bacnet open protocol platform for the new equipment and leaving the old system in place. All pneumatics will be capped in place. For the time being before the EPC comes in to pull it into the enterprise server the district will have two systems. From speaking with the district onsite they had no problem with this due to the fact that they do not use the existing system currently.	Ameresco's plan for the EPC is to install a Tridium Niagara 4 system and to replace the supervisory controllers from Metasys to Tridium and have one front end interface for all schools.	3/2/2023	CLOSED			
003	Kaliot	3/23/2023	3/30/2023	Is UV-35 supposed to get cooling as shown?	No, that condenser listed ACCU-35 on the schedule was a typo. That room is not getting cooling.	2/6/2023	CLOSED			
003	Kaliot	3/23/2023	3/30/2023	Where is electrical coming from with service upgrade removed from scope. Please either provide updated panel schedules, or ideally, update electrical drawings. This is for both schools	Updated electrical drawings should be sent this week for Margets and Kaliot.	2/6/2023	INCOMPLETE RESPONSE			
003	Kaliot	3/23/2023	3/30/2023	The onsite condition of the piping configuration is that the fin tube radiation and UV are piped in series. Can you please provide a detail outlining the UV piping for this.	See attached sketch in the response file.	2/6/2023	CLOSED			
003	Kaliot	3/23/2023	3/30/2023	The onsite condition shows that all valves are 2way valves. The current drawings have these all being changed to 3 way valves. Is the hot water system ready to be converted to constant volume system with this change?	Yes, these pumps have a VFD but the variable speed controls are not there (and there is no bypass in Boiler Room). Instead of doing boiler room modifications to make this a variable speed system we proposed using 3-way valves.	2/6/2023	CLOSED			
003	Kaliot	3/23/2023	3/30/2023	The Gym at Kaliot is showing carbon monoxide detection. Is this supposed to be carbon dioxide?	No that is a gas fired RTU, so we need the Carbon monoxide sensors. In general, we used occupancy sensors (not CO2) for DCV on this project.	2/6/2023	CLOSED			
003	Kaliot	3/23/2023	3/30/2023	AD021 note 9- are we responsible for deming a PACM sink and all the utilities?	Please provide drawing reference, AD021 is an elevation drawing.	2/6/2023	INCOMPLETE (CONTRACTOR TO CLARIFY)			
003.1	Kaliot	2/7/2023	2/12/2023	PACM sinks are in Rooms 136C and 224A, On drawings H002 and H004.	-		INCOMPLETE (CONTRACTOR TO CLARIFY)			
003	Kaliot	3/23/2023	3/30/2023	There is a discrepancy between the new work in classroom A11 for horizontal UV's in classroom 136 A117 AD111 shows removal or rad covers in rooms 136/137 and the existing UV's are ceiling hung. If there is no cabinetry going back, why remove radiators? Also, same drawings, The UV's not shown for Demo in Room 136/137	Remove ceiling mounted UV's in Classroom 136 and Classroom 137 as indicated in Mechanical drawing MD111A and drawing AD611. Existing radiator covers to remain.	2/6/2023	CLOSED			
003	Kaliot	3/23/2023	3/30/2023	The onsite condition shows that behind the UV's and cabinetry in classroom there is an open plenum box across the entire length of the classroom to feed the unit with Outside air. Can you please clarify how the new Cabinetry and UV's are to be installed to account for this open air plenum?	Can you please send us pictures of the situation you are referring to.	2/6/2023	INCOMPLETE RESPONSE			
003.2	Kaliot	2/7/2023	2/12/2023	Room 204, the louver is clearly in front of fin tube radiation, and behind a double wall of sheetrock and plywood, not behind a UV. We have looked out the window and there is no louver directly behind the UV. Picture is attached.						
003	Kaliot	3/23/2023	3/30/2023	AD111, classrooms 11, 12, & 13 show no demo for ceiling hung UV's. The site conditions show ceiling hung UV's in space.	Remove ceiling mounted UV's per Mechanical Drawing MD111.	2/6/2023	Include key notes			
003	Kaliot	3/23/2023	3/30/2023	For the controls system it shows integration into the old Johnson system. Due to the fact that the EPC is going to be coming in and overlaying on top of this at some point in the near future the cost of this integration is a waste to the district. We propose providing a bacnet open protocol platform for the new equipment and leaving the old system in place. All pneumatics will be capped in place. For the time being before the EPC comes in to pull it into the enterprise server the district will have two systems. From speaking with the district onsite they had no problem with this due to the fact that they do not use the existing system currently.	Ameresco's plan for the EPC is to install a Tridium Niagara 4 system and to replace the supervisory controllers from Metasys to Tridium and have one front end interface for all schools.	2/6/2023	CLOSED			
004	Kaliot & Margets	2/7/2023	2/14/2023	The project scope includes running new power circuits in BX. Trane plans to abandon all existing conduit, conductors, etc. in place. This will both save time and cost on the overall project installation	ENERGIA DOES NOT RECOMMEND ABANDONING EXISTING WIRING. ALL WIRING SHOULD BE REMOVED BACK TO SOURCE. CONDUITS ENCASED IN CONCRETE CAN BE ABANDONED AND CUT AND CAPPED FLUSH TO FLOOR. COORDINATE ADDITIONAL FINISH REQUIREMENTS WITH ARCHITECT	2/25/2023	INCOMPLETE (AOR TO CLARIFY)			
004	Kaliot & Margets	2/7/2023	2/14/2023	Please advise if it is acceptable to utilize MC feeder cable for panel board feeders where concealed. This will reduce the quantity of ceiling removals associated with the feeder installation and provide a cost savings to the district. Conduit & wire would be utilized where exposed in areas such as the boiler rooms or main electrical rooms.	ENERGIA TAKES NO EXCEPTION. ARCHITECT TO ADVISE IF SCHOOL DISTRICT OBJECTS TO MC CABLE IN CONCEALED LOCATIONS.	2/25/2023	INCOMPLETE (AOR TO CLARIFY)			
005	Ramapo HS	2/7/2023	2/14/2023	Who is the fire alarm vendor for the districts for all schools in phase 1	Ramapo HS - Existing Fire Alarm Control Panel is Fire-Lite (Honeywell). Spring Valley HS - Existing Fire Alarm Control Panel is EST - 2. (We do not know who services the systems).	2/15/2023	INCOMPLETE RESPONSE			
005	Ramapo HS	2/7/2023	2/14/2023	What is the % glycol if any in the hot water at all districts	-					
005	Ramapo HS	2/7/2023	2/14/2023	What is the % glycol for the chilled water systems at the high school	Glycol is provided at Spring Valley HS for the new chiller. We are specifying 50% PG. This matches the design documents from 2007 when the chillers were installed.	2/15/2023	CLOSED			
006	Ramapo HS	2/14/2023	2/21/2023	Who is the outside telecom/security vendor utilized by the school or if it is performed in house as it relates to cameras and IT relocations associated with ceiling demo/reinstall work	The district utilized Intellogic Solutions for the recent IT & security upgrades to Ramapo HS. They worked very closely with DRCSO's Director of IT and Cyber Security, Bhavin Gandhi (bgandhi@percud.org) and Coordinator of Safety and Security/DRD Tom Carton (tcarton@percud.org), during the upgrade process. Please coordinate with them for additional information.	2/14/2023	CLOSED			
006	Ramapo HS	2/14/2023	2/21/2023	Provide specifications for lighting fixtures such as 2x4, 4x4, etc. as it is impractical and cost prohibitive to remove, store & reinstall fixtures where new ceilings are being provided.	The scope is to carefully remove, store, and reinstall all existing fixtures as there is no budget to do new fixtures. Contractor to proceed with scope as indicated on drawings.	2/14/2023	CLOSED			
007	Kaliot	2/17/2023	2/24/2023	Please provide a description or detail of a louvered penthouse, including size required.	Greenheck WH Model with throat dimensions 18x18. See following pages for submittal.	3/7/2023	CLOSED			
008	All 4 Schools	2/17/2023	2/24/2023	Confirming that ProPress and Zoomlock fittings can be used on all copper piping installations throughout the work at Kaliot, Margets, Ramapo HS, and Spring Valley HS.	ProPress and ProPress Zoomlock MAX are acceptable for copper pipe fitting installations at the locations noted above. Zoomlock PUSH and other non-mechanical fitting systems are not permitted.	2/17/2023	CLOSED			
009	Margets	2/20/2023	2/27/2023	Is ERV-1 for Margets meant to be a Mitsubishi Lossnay UMR? It is mounted on the roof and to my knowledge, Mitsubishi does not make outdoor rated units.	ERV-1 should be a Renewaire EV450RT Unit. Mechanical schedule to be updated immediately. Data sheet / Specification sheet attached	2/21/2023	CLOSED			
010	High Schools	2/24/2023	3/3/2023	Please advise if it is acceptable to utilize MC feeder cable for panelboard feeders where concealed. This will reduce the quantity of ceiling removals associated with the feeder installation and provide a cost savings to the district. Conduit & wire would be utilized where exposed in areas such as the boiler rooms or main electrical rooms.	Yes, MC feeder cable, with equivalent copper conductors to those indicated for conduit and wire feeders will be acceptable where installed concealed above accessible ceilings. Use only conduit and wire where feeders are run exposed in mechanical and electrical rooms, and storage rooms and similar rooms with exposed structure (no suspended ceilings).	3/15/2023	CLOSED			
011	High Schools	2/24/2023	3/3/2023	There are two pairs of new W14x38 beams shown to be installed below roof level. If possible, can these beams be designed to be installed above roof, essentially as exterior damage, in order to minimize the work in the ceiling and avoid having to swing 35' long beams and 40' long beams through the interior space.	Ramapo HS drawing S401 dated 2/14/23 does not specify any W14x38 beams. W12x26 members are specified and span less than 17'. Please verify use of most up to date drawings. We recommend supporting ERV-1 and ERV-2 at the roof level rather than creating an elevated drainage system that would need to span to existing columns. Adding drainage would require additional framing and become more complex	3/7/2023	Closed: Vt opinion was not accepted by EOR and will increase overall project cost.			
012	Kaliot	2/24/2023	3/3/2023	UV#24 in the Nurse's office at Kaliot is called out on the drawings schedule as horizontal, but its shown as vertical with casework on the drawings. On Page M311B.	Correct that is a typo in the mechanical schedule, this should be a 1000 CFM Vertical Unit Ventilator. Updated drawings will reflect this change.	3/7/2023	CLOSED			



Phase 1A – MEP Package – RFI Log - To Date (Page – 3 of 3)

Current Date	6/5/2023	East Ramapo Central School District							Jacobs
TOTAL	025								
Due < 2 DAYS									
OVERDUE									
PHASE 1A - MEP - RFI LOG									
Request For Information: 5 Business Days for Review									
RFI No #	School	Date Submitted	Due Date	GC - Question - 1	CSArch - Answer - 1	Returned	Status		
013	Ramapo HS	3/27/2023	3/6/2023	This is for Ramapo HS. We would like to mount the structural steel on the roof (s) rather than below the deck. Trying to swing larger steel beams inside an occupied space will be a very difficult task. Putting the steel on the roof will help with timing, cost, and the extent of ceiling removal in the space. All steel beams put outside would be galvanized. If you need more info, please let me know.	Please refer to current drawings dated 2/14/23 which specify different construction that what is shown on the attached sheets. We recommend supporting ERV-3, ERV-2 and DDA5-3 at the roof level rather than creating an elevated drainage system that would need to span to existing columns. Adding drainage would require additional framing members and become more complex than the proposed sketch. Lateral loads would need be considered likely adding horizontal bracing and potentially diagonal knee braces. AHU-1 and AHU-2 (page 3 of this RFI) are located in the mechanical room not on the roof.	3/31/2023	CLOSED		
014	Margets	3/1/2023	3/8/2023	Requesting details for how the engineer would like the existing baseboard radiation system modified to tie in the new construction UPVs. There are 6-8 UPVs with this condition.	See fin tube to UV Piping Schematic detail.	3/21/2023	CLOSED		
015	Kakiat & Margets	3/1/2023	3/8/2023	Please provide a specification on what is required for hard surface countertops at the 2 elementary schools so the taps and install can be priced	The technical specification for the countertops will be provided with the project manual. The basis of design for counter material is one of the following manufacturers: a. Corian Solid Surface, DuPont; DuPont de Nemours, Inc. b. LG Hausys, LTD. c. Wilsonart, LLC. Colors and patterns as selected by architect from manufacturer's full range. See drawings dated 3/14/2023 for details.	3/15/2023	CLOSED		
016	Kakiat & Margets	3/1/2023	3/8/2023	Please provide updated electrical drawings so electrical can be priced in accordance with the most up to date drawings. Existing electrical drawings are dated August 2022.	See electrical drawings for Margets and Kakiat ES which are dated 02/14/2023 and were issued to Trans via New Forms file transfer on 03/10/2023.	3/15/2023	CLOSED		
017	Spring Valley HS	3/13/2023	3/20/2023	Please confirm the girl's gym does not have asbestos wall coverings. The girl's gym has the same style plaster on the walls as the boy's gym, and the boy's gym was built later and is noted as having asbestos containing plaster.					
018	Margets	3/16/2023	3/23/2023	Please provide the spec of the grille in drawing A202.	The technical specification for the Grilles will be provided with the project manual. The basis-of-design product shall be Architectural Grille (provide aluminum bar grilles, Type "F", full face frame) or comparable products by Precision Metal Fabricators, Reggio Register Company. Grille sizes shall coordinate with lengths and locations of existing fin-tube radiation elements, verify width with field conditions.	3/21/2023	CLOSED		
019	Margets	3/29/2023	4/5/2023	Please clarify what note DC-8 should be. It is not noted on the drawings.	DC8- SELECTIVE CEILING DEMOLITION TO ACCOMMODATE MECH WORK. COORDINATE WITH MC FOR LOCATION. REFER TO MECH DRAWINGS FOR MORE INFORMATION.	4/10/2023	CLOSED		
020	Spring Valley HS	4/7/2023	4/14/2023	Please confirm via testing that room 13A, Boys Toilet in the girls gym does not have transite panel asbestos containing ceiling. This situation looks negatively similar to the ceiling in storage BBA near the girls locker room in the girls gym, which is confirmed Transite Panels containing asbestos. This condition may be existing in other bathrooms in the area as well, which we will likely be working in.					
021	Spring Valley HS	4/7/2023	4/14/2023	Trans recommends reusing the ductwork in the girls gym. The current ductwork goes through steel beams which the new ductwork will be required to transition through. This may cause airflow issues at the transitions. Also, the gym is not on grade, so using man lifts is not feasible since the floor will likely not support them. This will require all the demo and installation of new ductwork to be completed from baker scaffold, which is much more time consuming and adds extra safety requirements.	The existing ductwork and diffusers are in bad shape and need to be replaced. The existing ductwork transitions through the steel can be reused. Provide new ductwork with new registers/grilles as designed between the steel. Existing ductwork to remain shall be thoroughly cleaned prior to connection with new ductwork and reuse. All ductwork shall be cleaned prior to painting in accordance with the specifications.	4/26/2023	CLOSED		
022	Spring Valley HS	4/7/2023	4/14/2023	In the weight room the H&V units are mounted high in the air, in hard to access the closets. The HV-5B unit is located in a confined space, which add to the safety requirement of the project. HV-5A is in located 15-20 feet in the air in a closet, which can only be access via a baker scaffold. Trans recommends abandoning the unit in place, with the ductwork cut and capped, the electrical safed off and the piping drained and isolated from the unit. The new unit is expected to be floor mounted per the drawings, so leaving the existing units in place will not interfere with the new unit.	Remove all equipment, piping and ductwork as shown on documents. HV-5A cannot stay in place as it will interfere with new ductwork and connection to QA tower.	4/10/2023	CLOSED		
023	Spring Valley HS	4/7/2023	4/14/2023	Please confirm if any mechanical demo is being done in the offices circled on the snippet below. Currently ceilings are shown as being removed, but I cannot find any drawings showing mechanical demo in this space, just new work going back. Drawing is M111. It seem like there is existing ductwork in this space.	Yes, there is removals of all ductwork located above the ceilings in this area that is associated with EC-12 and EF-12A. A supplemental instruction will be issued.	4/11/2023	CLOSED		
024	Kakiat & Margets	4/12/2023	4/19/2023	Please provide AHERA Reports for Margets and Kakiat	The AHERA Reports are available in the Facilities Office located in the District Central Administration Building, located at 105 S. Madison Avenue, Spring Valley, NY 10977. Make an appointment with the Facilities Dept. (tel: 845.577.6586) Department to view the AHERA Reports.	4/27/2023	CLOSED		
025	Spring Valley HS	5/9/2023	5/16/2023	Please provide the quantity of glycol (gallons) for the chilled water and hot water systems.					



Phase 1A – MEP Package – Submittal Log – To Date

Current Date	6/5/2023	East Ramapo Central School District						
TOTAL	21	Phase 1A MEP - Submittal Log						
Due < 2 DAYS	0							
OVERDUE	1							
TO CONTRACTOR	3	Initial Review: 10 WD/ Re Submittal Review: 7 WD						
Submittal Spec Section / Submittal No.	Description	School	Date Submitted	Due Date (10 WD)	Date Returned	Status -000	Final Status	
238223/001	Metal Storage Shelving Systems	Margetts ES	3/22/2023	4/5/2023	4/21/2023	AAN	AAN	
236200/001	Variable Refrigerant Volume Systems (VRF)	Kakiat ES	2/13/2023	2/27/2023	3/31/2023	AAN	AAN	
236200/002	Variable Refrigerant Volume Systems (VRF)	Margetts ES	2/13/2023	2/27/2023	3/31/2023	AAN	AAN	
236423/001	Scroll Water Chillers - Air Cooled	Spring Valley HS, Ramapo HS	3/22/2023	4/5/2023	4/25/2023	NET	NET	
237223/001	Packaged Rooftop DOAS Unit with Energy Recovery	Ramapo HS	3/17/2023	3/31/2023	4/14/2023	NET	NET	
237223/002	Packaged Rooftop DOAS Unit with Energy Recovery	Spring Valley HS	3/21/2023	4/4/2023	4/19/2023	AAN	AAN	
237413/001	Packaged Rooftop Air Conditioning Units	Spring Valley HS, Ramapo HS	3/21/2023	4/4/2023	4/6/2023	NET	NET	
237416.14/001	Packaged Rooftop Units with Energy Recovery	Kakiat ES	3/10/2023	3/24/2023	3/10/2023	NET	NET	
237416.14/002	Packaged Rooftop Units with Energy Recovery	Margetts ES, Elemwood ES	3/10/2023	3/24/2023	3/13/2023	NET	NET	
238129/001	Variable Refrigerant Flow System - Shop Drawings RHS VRF	Spring Valley HS, Ramapo HS	3/13/2023	3/27/2023	5/11/2023	AAN	AAN	
238129/002	Variable Refrigerant Flow System - SVHS ACCU-2 VRF System	Spring Valley HS	3/30/2023	4/13/2023	4/19/2023	AAN	AAN	
238129/003	Variable Refrigerant Flow System - PD ACCU-1	Ramapo HS	4/2/2023	4/16/2023	4/19/2023	AAN	AAN	
238129/004	Variable Refrigerant Flow System - PD ACCU-1	Spring Valley HS	4/2/2023	4/16/2023	4/21/2023	AAN	AAN	
238216/002	Coils - Shop Drawings	Spring Valley HS, Ramapo HS	4/2/2023	4/16/2023				
238216/003	Coils - Resubmittal - Product Data	Spring Valley HS, Ramapo HS	4/26/2023	5/10/2023	5/5/2023	NET	NET	
238219/001	Blower Coil Units	Spring Valley HS, Ramapo HS	3/13/2023	3/27/2023	5/11/2023	MCN	MCN	
238223/001	Unit Ventilators	Margetts ES	2/23/2023	3/9/2023	2/23/2023	AAN	AAN	
238223/002	Unit Ventilators	Kakiat ES, Elemwood ES	3/10/2023	3/24/2023	3/21/2023	R&R	R&R	
238239/001	Unit Heaters	Spring Valley HS, Ramapo HS	3/30/2023	4/13/2023	5/10/2023	AAN	AAN	
237313/001	Air Handling Units	Spring Valley HS	4/3/2023	4/17/2023	5/8/2023	R&R	R&R	
237313/002	Air Handling Units	Ramapo HS	4/3/2023	4/17/2023	5/8/2023	R&R	R&R	

Daily Construction Field Reports & CIC's are available upon request.

END OF REPORT