

Flute Major Scales

Circle of Fourths (Flats)

ORDER OF FLATS = B E A D G C F
(BEAD Greatest Common Factor)

C Major (Concert C)



F Major (Concert F)



B \flat Major (Concert B \flat)



E \flat Major (Concert E \flat)



A \flat Major (Concert A \flat)



D \flat Major (Concert D \flat)



G \flat Major (Concert G \flat)



C \flat Major (Concert C \flat)



ENHARMONICS:

A \flat = G# B \flat = A# C \flat = B D \flat = C# E \flat = D# F \flat = E G \flat = F#
 A# = B \flat B# = C C# = D \flat D# = E \flat E# = F F# = G \flat G# = A \flat

Flute Major Scales

Circle of Fifths (Sharps)

ORDER OF SHARPS = F C G D A E B
(Flowers Can Grow During AnEthing Except Blizzards)

C Major (Concert C)



G Major (Concert G)



D Major (Concert D)



A Major (Concert A)



E Major (Concert E)



B Major (Concert B)



F# Major (Concert F#)



C# Major (Concert C#)



ENHARMONICS:

A# = B_b B# = C C# = D_b D# = E_b E# = F F# = G_b G# = A_b
A_b = G# B_b = A# C_b = B D_b = C# E_b = D# F_b = E G_b = F#

Oboe Major Scales

Circle of Fourths (Flats)

ORDER OF FLATS = B E A D G C F
(BEAD Greatest Common Factor)

C Major (Concert C)



F Major (Concert F)



B \flat Major (Concert B \flat)



E \flat Major (Concert E \flat)



A \flat Major (Concert A \flat)



D \flat Major (Concert D \flat)



G \flat Major (Concert G \flat)



C \flat Major (Concert C \flat)



ENHARMONICS:

A \flat = G# B \flat = A# C \flat = B D \flat = C# E \flat = D# F \flat = E G \flat = F#

A# = B \flat B# = C C# = D \flat D# = E \flat E# = F F# = G \flat G# = A \flat

Oboe Major Scales

Circle of Fifths (Sharps)

ORDER OF SHARPS = F C G D A E B
(Flowers Can Grow During Anything Except Blizzards)

C Major (Concert C)



G Major (Concert G)



D Major (Concert D)



A Major (Concert A)



E Major (Concert E)



B Major (Concert B)



F# Major (Concert F#)



C# Major (Concert C#)



ENHARMONICS:

A# = B_b B# = C C# = D_b D# = E_b E# = F F# = G_b G# = A_b
A_b = G# B_b = A# C_b = B D_b = C# E_b = D# F_b = E G_b = F#

Clarinet Major Scales

Circle of Fourths (Flats)

ORDER OF FLATS = B E A D G C F
(BEAD Greatest Common Factor)

C Major (Concert B_♭)

Musical notation for C Major (Concert B_♭) in 4/4 time. The scale is written on a single staff in treble clef. The notes are: C4, D4, E4, F4, G4, A4, B4, C5, B4, A4, G4, F4, E4, D4, C4. The key signature has one flat (B_♭). The label "RH4" is centered below the staff.

F Major (Concert E_♭)

Musical notation for F Major (Concert E_♭) in 4/4 time. The scale is written on a single staff in treble clef. The notes are: F4, G4, A4, B4, C5, B4, A4, G4, F4, E4, D4, C4, B3, A3, F4. The key signature has two flats (B_♭, E_♭). The label "RH4" is centered below the staff.

B_♭ Major (Concert A_♭)

Musical notation for B_♭ Major (Concert A_♭) in 4/4 time. The scale is written on a single staff in treble clef. The notes are: B_♭4, C5, D5, E5, F5, E5, D5, C5, B_♭4, A_♭4, G_♭4, F4, E4, D4, B_♭4. The key signature has three flats (B_♭, E_♭, A_♭). The label "RH4" is centered below the staff.

E_♭ Major (Concert D_♭)

Musical notation for E_♭ Major (Concert D_♭) in 4/4 time. The scale is written on a single staff in treble clef. The notes are: E_♭4, F4, G4, A4, B4, C5, B4, A4, G4, F4, E_♭4, D_♭4, C_♭4, B_♭3, E_♭4. The key signature has four flats (B_♭, E_♭, A_♭, D_♭). The label "RH4" is centered below the staff.

A_♭ Major (Concert G_♭)

Musical notation for A_♭ Major (Concert G_♭) in 4/4 time. The scale is written on a single staff in treble clef. The notes are: A_♭4, B_♭4, C5, D5, E5, F5, E5, D5, C5, B_♭4, A_♭4, G_♭4, F4, E4, A_♭4. The key signature has five flats (B_♭, E_♭, A_♭, D_♭, G_♭). The label "RH4" is centered below the staff.

D_♭ Major (Concert C_♭)

Musical notation for D_♭ Major (Concert C_♭) in 4/4 time. The scale is written on a single staff in treble clef. The notes are: D_♭4, E_♭4, F4, G4, A4, B4, C5, B4, A4, G4, F4, E_♭4, D_♭4, C_♭4, B_♭3, D_♭4. The key signature has six flats (B_♭, E_♭, A_♭, D_♭, G_♭, C_♭). The label "RH4" is centered below the staff.

G_♭ Major (Concert E)

Musical notation for G_♭ Major (Concert E) in 4/4 time. The scale is written on a single staff in treble clef. The notes are: G_♭4, A_♭4, B_♭4, C5, D5, E5, F5, E5, D5, C5, B_♭4, A_♭4, G_♭4, F4, E4, G_♭4. The key signature has seven flats (B_♭, E_♭, A_♭, D_♭, G_♭, C_♭, F_♭). The label "RH4" is centered below the staff.

C_♭ Major (Concert A)

Musical notation for C_♭ Major (Concert A) in 4/4 time. The scale is written on a single staff in treble clef. The notes are: C_♭4, D_♭4, E_♭4, F4, G4, A4, B4, C_♭5, B_♭4, A_♭4, G_♭4, F4, E_♭4, D_♭4, C_♭4, B_♭3, C_♭4. The key signature has eight flats (B_♭, E_♭, A_♭, D_♭, G_♭, C_♭, F_♭, C_♭). The label "RH4" is centered below the staff.

ENHARMONICS:

A_♭ = G# B_♭ = A# C_♭ = B D_♭ = C# E_♭ = D# F_♭ = E G_♭ = F#
A# = B_♭ B# = C C# = D_♭ D# = E_♭ E# = F F# = G_♭ G# = A_♭

Clarinet Major Scales

Circle of Fifths (Sharps)

ORDER OF SHARPS = F C G D A E B
 (Flowers Can Grow During Anything Except Blizzards)

C Major (Concert B_b)

Musical notation for C Major (Concert B_b) in 4/4 time. The scale is written on a single staff. The notes are: C4, D4, E4, F4, G4, A4, B4, C5, B4, A4, G4, F4, E4, D4, C4. The right hand is labeled RH4.

G Major (Concert F)

Musical notation for G Major (Concert F) in 4/4 time. The scale is written on a single staff. The notes are: G4, A4, B4, C5, D5, E5, F5, G5, F5, E5, D5, C5, B4, A4, G4. The right hand is labeled RH4.

D Major (Concert C)

Musical notation for D Major (Concert C) in 4/4 time. The scale is written on a single staff. The notes are: D4, E4, F4, G4, A4, B4, C5, D5, C5, B4, A4, G4, F4, E4, D4. The right hand is labeled RH3. Fingerings are indicated: L (left hand), R (right hand).

A Major (Concert G)

Musical notation for A Major (Concert G) in 4/4 time. The scale is written on a single staff. The notes are: A4, B4, C5, D5, E5, F5, G5, A5, G5, F5, E5, D5, C5, B4, A4. The right hand is labeled RH4.

E Major (Concert D)

Musical notation for E Major (Concert D) in 4/4 time. The scale is written on a single staff. The notes are: E4, F4, G4, A4, B4, C5, D5, E5, D5, C5, B4, A4, G4, F4, E4. The right hand is labeled RH4. Fingerings are indicated: R (right hand), L (left hand).

B Major (Concert A)

Musical notation for B Major (Concert A) in 4/4 time. The scale is written on a single staff. The notes are: B4, C5, D5, E5, F5, G5, A5, B5, A5, G5, F5, E5, D5, C5, B4. The right hand is labeled RH4.

F# Major (Concert E)

Musical notation for F# Major (Concert E) in 4/4 time. The scale is written on a single staff. The notes are: F#4, G#4, A#4, B5, C#5, D#5, E#5, F#6, E#5, D#5, C#5, B5, A#4, G#4, F#4. The right hand is labeled RH4.

C# Major (Concert B)

Musical notation for C# Major (Concert B) in 4/4 time. The scale is written on a single staff. The notes are: C#4, D#4, E#4, F#5, G#5, A#5, B6, C#7, B#5, A#5, G#5, F#5, E#4, D#4, C#4. The right hand is labeled RH3. Fingerings are indicated: L (left hand), R (right hand).

ENHARMONICS:

A# = B_b B# = C C# = D_b D# = E_b E# = F F# = G_b G# = A_b
 A_b = G# B_b = A# C_b = B D_b = C# E_b = D# F_b = E G_b = F#

Bassoon Major Scales

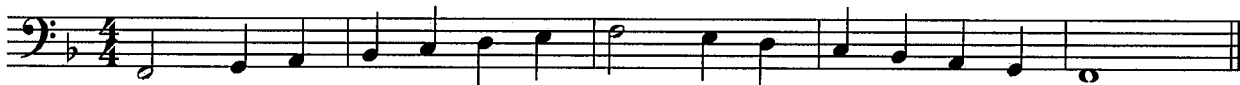
Circle of Fourths (Flats)

ORDER OF FLATS = B E A D G C F
(BEAD Greatest Common Factor)

C Major (Concert C)



F Major (Concert F)



B \flat Major (Concert B \flat)



E \flat Major (Concert E \flat)



A \flat Major (Concert A \flat)



D \flat Major (Concert D \flat)



G \flat Major (Concert G \flat)



C \flat Major (Concert C \flat)



ENHARMONICS: A \flat = G# B \flat = A# C \flat = B D \flat = C# E \flat = D# F \flat = E G \flat = F#
A# = B \flat B# = C C# = D \flat D# = E \flat E# = F F# = G \flat G# = A \flat

Bassoon Major Scales

Circle of Fifths (Sharps)

ORDER OF SHARPS = F C G D A E B
(Flowers Can Grow During AnEthing Except Blizzards)

C Major (Concert C)



G Major (Concert G)



D Major (Concert D)



A Major (Concert A)



E Major (Concert E)



B Major (Concert B)



F# Major (Concert F#)



C# Major (Concert C#)



ENHARMONICS:

A# = B_b B# = C C# = D_b D# = E_b E# = F F# = G_b G# = A_b
A_b = G# B_b = A# C_b = B D_b = C# E_b = D# F_b = E G_b = F#

Oboe Major Scales

Circle of Fourths (Flats)

ORDER OF FLATS = B E A D G C F
(BEAD Greatest Common Factor)

C Major (Concert C)



F Major (Concert F)



Bb Major (Concert Bb)



Eb Major (Concert Eb)



Ab Major (Concert Ab)



Db Major (Concert Db)



Gb Major (Concert Gb)



Cb Major (Concert Cb)



ENHARMONICS:

A_b = G[#] B_b = A[#] C_b = B D_b = C[#] E_b = D[#] F_b = E G_b = F[#]
A[#] = B_b B[#] = C C[#] = D_b D[#] = E_b E[#] = F F[#] = G_b G[#] = A_b

Oboe Major Scales

Circle of Fifths (Sharps)

ORDER OF SHARPS = F C G D A E B
(Flowers Can Grow During Anything Except Blizzards)

C Major (Concert C)



G Major (Concert G)



D Major (Concert D)



A Major (Concert A)



E Major (Concert E)



B Major (Concert B)



F# Major (Concert F#)



C# Major (Concert C#)



ENHARMONICS:

A# = B_b B# = C C# = D_b D# = E_b E# = F F# = G_b G# = A_b
A_b = G# B_b = A# C_b = B D_b = C# E_b = D# F_b = E G_b = F#

Alto Saxophone Major Scales

Circle of Fourths (Flats)

ORDER OF FLATS = B E A D G C F
(BEAD Greatest Common Factor)

C Major (Concert E_b)



F Major (Concert A_b)



B_b Major (Concert D_b)



E_b Major (Concert G_b)



A_b Major (Concert C_b)



D_b Major (Concert E)



G_b Major (Concert A)



C_b Major (Concert D)



ENHARMONICS:

A_b = G# B_b = A# C_b = B D_b = C# E_b = D# F_b = E G_b = F#
A# = B_b B# = C C# = D_b D# = E_b E# = F F# = G_b G# = A_b

Alto Saxophone Major Scales

Circle of Fifths (Sharps)

ORDER OF SHARPS = F C G D A E B
(Flowers Can Grow During Anthing Except Blizzards)

C Major (Concert E_b)



G Major (Concert B_b)



D Major (Concert F)



A Major (Concert C)



E Major (Concert G)



B Major (Concert D)



F# Major (Concert A)



C# Major (Concert E)



ENHARMONICS:

A# = B_b B# = C C# = D_b D# = E_b E# = F F# = G_b G# = A_b
A_b = G# B_b = A# C_b = B D_b = C# E_b = D# F_b = E G_b = F#

Tenor Saxophone Major Scales

Circle of Fourths (Flats)

ORDER OF FLATS = B E A D G C F
(BEAD Greatest Common Factor)

C Major (Concert B_♭)



F Major (Concert E_♭)



B_♭ Major (Concert A_♭)



E_♭ Major (Concert D_♭)



A_♭ Major (Concert G_♭)



D_♭ Major (Concert C_♭)



G_♭ Major (Concert E)



C_♭ Major (Concert A)



ENHARMONICS:

A_♭ = G# B_♭ = A# C_♭ = B D_♭ = C# E_♭ = D# F_♭ = E G_♭ = F#
A# = B_♭ B# = C C# = D_♭ D# = E_♭ E# = F F# = G_♭ G# = A_♭

Tenor Saxophone Major Scales

Circle of Fifths (Sharps)

ORDER OF SHARPS = F C G D A E B
 (Flowers Can Grow During Anything Except Blizzards)

C Major (Concert B_b)



G Major (Concert F)



D Major (Concert C)



A Major (Concert G)



E Major (Concert D)



B Major (Concert A)



F# Major (Concert E)



C# Major (Concert B)



ENHARMONICS:

A# = B_b B# = C C# = D_b D# = E_b E# = F F# = G_b G# = A_b
 A_b = G# B_b = A# C_b = B D_b = C# E_b = D# F_b = E G_b = F#

Trumpet/Baritone T.C. Major Scales

Circle of Fourths (Flats)

ORDER OF FLATS = B E A D G C F
(BEAD Greatest Common Factor)

C Major (Concert B_♭)



F Major (Concert E_♭)



B_♭ Major (Concert A_♭)



E_♭ Major (Concert D_♭)



A_♭ Major (Concert G_♭)



D_♭ Major (Concert C_♭)



G_♭ Major (Concert E)



C_♭ Major (Concert A)



ENHARMONICS:

A_♭ = G# B_♭ = A# C_♭ = B D_♭ = C# E_♭ = D# F_♭ = E G_♭ = F#
A# = B_♭ B# = C C# = D_♭ D# = E_♭ E# = F F# = G_♭ G# = A_♭

Trumpet/Baritone T.C. Major Scales

Circle of Fifths (Sharps)

ORDER OF SHARPS = F C G D A E B
(Flowers Can Grow During Anything Except Blizzards)

C Major (Concert B_b)



G Major (Concert F)



D Major (Concert C)



A Major (Concert G)



E Major (Concert D)



B Major (Concert A)



F# Major (Concert E)



C# Major (Concert B)



ENHARMONICS:

A# = B_b B# = C C# = D_b D# = E_b E# = F F# = G_b G# = A_b
A_b = G# B_b = A# C_b = B D_b = C# E_b = D# F_b = E G_b = F#

French Horn Major Scales

Circle of Fourths (Flats)

ORDER OF FLATS = B E A D G C F
(BEAD Greatest Common Factor)

C Major (Concert F)



F Major (Concert B \flat)



B \flat Major (Concert E \flat)



E \flat Major (Concert A \flat)



A \flat Major (Concert D \flat)



D \flat Major (Concert G \flat)



G \flat Major (Concert C \flat)



C \flat Major (Concert E)



ENHARMONICS: A \flat = G# B \flat = A# C \flat = B D \flat = C# E \flat = D# F \flat = E G \flat = F#
A# = B \flat B# = C C# = D \flat D# = E \flat E# = F F# = G \flat G# = A \flat

French Horn Major Scales

Circle of Fifths (Sharps)

ORDER OF SHARPS = F C G D A E B
(Flowers Can Grow During Anything Except Blizzards)

C Major (Concert F)



G Major (Concert C)



D Major (Concert G)



A Major (Concert D)



E Major (Concert A)



B Major (Concert E)



F# Major (Concert B)



C# Major (Concert F#)



ENHARMONICS:

A# = B_b B# = C C# = D_b D# = E_b E# = F F# = G_b G# = A_b
A_b = G# B_b = A# C_b = B D_b = C# E_b = D# F_b = E G_b = F#

Trombone/Baritone B.C. Major Scales

Circle of Fourths (Flats)

ORDER OF FLATS = B E A D G C F
(BEAD Greatest Common Factor)

C Major (Concert C)



F Major (Concert F)



B \flat Major (Concert B \flat)



E \flat Major (Concert E \flat)



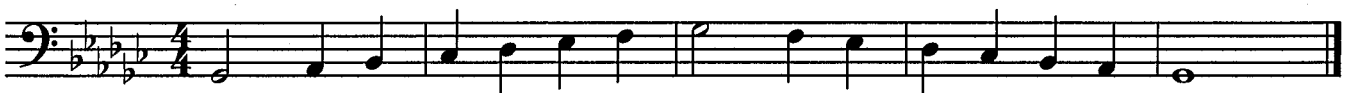
A \flat Major (Concert A \flat)



D \flat Major (Concert D \flat)



G \flat Major (Concert G \flat)



C \flat Major (Concert C \flat)



ENHARMONICS:

A \flat = G# B \flat = A# C \flat = B D \flat = C# E \flat = D# F \flat = E G \flat = F#
A# = B \flat B# = C C# = D \flat D# = E \flat E# = F F# = G \flat G# = A \flat

Trombone/Baritone B.C. Major Scales

Circle of Fifths (Sharps)

ORDER OF SHARPS = F C G D A E B
(Flowers Can Grow During AnEanything Except Blizzards)

C Major (Concert C)



G Major (Concert G)



D Major (Concert D)



A Major (Concert A)



E Major (Concert E)



B Major (Concert B)



F# Major (Concert F#)



C# Major (Concert C#)



ENHARMONICS:

A# = B_b B# = C C# = D_b D# = E_b E# = F F# = G_b G# = A_b
A_b = G# B_b = A# C_b = B D_b = C# E_b = D# F_b = E G_b = F#

Tuba Major Scales

Circle of Fourths (Flats)

ORDER OF FLATS = B E A D G C F
(BEAD Greatest Common Factor)

C Major (Concert C)



F Major (Concert F)



B \flat Major (Concert B \flat)



E \flat Major (Concert E \flat)



A \flat Major (Concert A \flat)



D \flat Major (Concert D \flat)



G \flat Major (Concert G \flat)



C \flat Major (Concert C \flat)



ENHARMONICS:

A \flat = G# B \flat = A# C \flat = B D \flat = C# E \flat = D# F \flat = E G \flat = F#
A# = B \flat B# = C C# = D \flat D# = E \flat E# = F F# = G \flat G# = A \flat

Tuba Major Scales

Circle of Fifths (Sharps)

ORDER OF SHARPS = F C G D A E B
(Flowers Can Grow During Anything Except Blizzards)

C Major (Concert C)



G Major (Concert G)



D Major (Concert D)



A Major (Concert A)



E Major (Concert E)



B Major (Concert B)



F# Major (Concert F#)



C# Major (Concert C#)



ENHARMONICS:

A# = B_b B# = C C# = D_b D# = E_b E# = F F# = G_b G# = A_b
A_b = G# B_b = A# C_b = B D_b = C# E_b = D# F_b = E G_b = F#

Mallet Percussion Major Scales

Circle of Fourths (Flats)

ORDER OF FLATS = B E A D G C F
(BEAD Greatest Common Factor)

C Major (Concert C)



C Major Arpeggio



F Major (Concert F)



F Major Arpeggio



B_♭ Major (Concert B_♭)



B_♭ Major Arpeggio



E_♭ Major (Concert E_♭)



E_♭ Major Arpeggio



ENHARMONICS:

A_♭ = G# B_♭ = A# C_♭ = B D_♭ = C# E_♭ = D# F_♭ = E G_♭ = F#
A# = B_♭ B# = C C# = D_♭ D# = E_♭ E# = F F# = G_♭ G# = A_♭

Mallet Percussion Major Scales

Circle of Fifths (Sharps)

ORDER OF SHARPS = F C G D A E B
 (Flowers Can Grow During Anything Except Blizzards)

C Major (Concert C)



C Major Arpeggio



G Major (Concert G)



G Major Arpeggio



D Major (Concert D)



D Major Arpeggio



A Major (Concert A)



A Major Arpeggio



ENHARMONICS:

A_b = G# B_b = A# C_b = B D_b = C# E_b = D# F_b = E G_b = F#
 A# = B_b B# = C C# = D_b D# = E_b E# = F F# = G_b G# = A_b