



## Waco Independent School District

Community Advisory Committee  
(CAC) for the Waco ISD Facilities  
Long-Range Master Plan  
Meeting 7

5.3.2021



### **Start/Finish On-Time**

- + Meetings begin within 5 mins of start time
- + Timekeepers will move us along
- + Use Chat for comments, questions



### **Participate/ Communicate**

- + All ideas are important
- + Use Chat to share feedback or ideas
- + Please complete any homework



### **Help Limit Distractions**

- + Mute during presentation
- + Use Chat to register questions
- + Use Raise Hand feature for your turn



### **Parking Lot**

- + Capture, or “Park” ideas or questions here for later
- + Keeps track of items not related to current agenda or discussion



### **Honesty, Courtesy, Respect**

- + Golden Rule: Do unto others...
- + Participate as you would in person
- + Listen to others and be engaged



### **Have Fun**

- + Learn new information
- + Meet new people
- + Make an impact on your community!

---

# Meeting Etiquette

**Meeting Schedule:**

- 1. ~~January 11~~
- 2. ~~January 25~~
- 3. ~~February 8~~
- 4. ~~March 1~~
- 5. ~~March 22~~
- 6. ~~April 12~~
- 7. ~~April 12~~ — Elementary Schools
- 8. May 3 – Demographer Update, Summary of Projects**
- 9. May 24 – Bond Capacity, Prioritization of Projects

	Sunday	Monday	Tuesday	Wednesday	Thursday	Friday	Saturday
<b>Jan 2021</b>	3	4	5	6	7	8	9
	10	11 meeting 1	12	13	14	15	16
	17	18 School Closed	19	20	21	22	23
	24	25 meeting 2	26	27	28	29	30
	31	1	2	3	4	5	6
<b>Feb 2021</b>	7	8 meeting 3	9	10	11	12	13
	14	15 School Closed	16	17	18	19	20
	21	22	23	24	25	26	27
	28	1 meeting 4	2	3	4	5	6
<b>March 2021</b>	7	8 School Closed	9 School Closed	10 School Closed	11 School Closed	12 School Closed	13
	14	15	16	17	18	19	20
	21	22 meeting 5	23	24	25	26	27
	28	29	30	31	1	2 School Closed	3
<b>April 2021</b>	4	5	6	7	8	9	10
	11	12 meeting 6	13	14	15	16	17
	18	19	20	21	22	23	24
	25	26	27	28	29	30	1
<b>May 2021</b>	2	3 meeting 7	4	5	6	7	8
	9	10	11	12	13	14	15
	16	17	18	19	20	21	22
	23	24 meeting 8	25	26	27	28	29
	30	31 School Closed	1	2	3	4	5

# Meeting Schedule



**Welcome**  
**Demographers Review**  
**Elementary Schools Strategy**  
**Facility Master Plan Goals**  
**Wrap-Up & Next Steps**

# Agenda – CAC Meeting 7





Welcome



O'CONNELL  
ROBERTSON

# Demographics



O'CONNELL  
ROBERTSON



Waco  
Independent  
School  
District

# Spring 2021 Demographic Update



TEMPLETON  
DEMOGRAPHICS

hanleywood | metrostudy



# Annual Enrollment Change

Year (Oct.)	EE/PK	K	1st	2nd	3rd	4th	5th	6th	7th	8th	9th	10th	11th	12th	Total	Total Growth	% Growth
2016/17	1,023	1,191	1,269	1,188	1,224	1,147	1,125	1,079	938	1,032	1,207	1,086	877	695	15,081		
2017/18	977	1,163	1,175	1,186	1,124	1,180	1,069	997	1,027	927	1,295	963	899	838	14,821	-260	-1.7%
2018/19	1,034	1,156	1,135	1,115	1,140	1,080	1,122	994	1,001	1,008	1,203	999	919	866	14,772	-49	-0.3%
2019/20	1,032	1,167	1,198	1,113	1,116	1,112	1,080	1,081	1,002	984	1,258	977	945	841	14,906	134	0.9%
2020/21	771	1,114	1,153	1,112	1,084	1,061	1,054	993	1,069	972	1,176	1,088	991	939	14,577	-329	-2.2%

\*Yellow Box = largest grade per year  
Green Box = second largest grade per year

	K	1st	2nd	3rd	4th	5th	6th	7th	8th	9th	10th	11th	12th	Elem	MS	HS
3 year avg	0.986	1.000	0.953	0.979	0.962	0.966	0.938	1.000	0.978	1.247	0.816	0.972	0.957	0.974	0.972	0.998
2017/18	0.976	0.987	0.935	0.946	0.964	0.932	0.886	0.952	0.988	1.255	0.798	0.828	0.956	0.957	0.942	0.959
2018/19	0.994	0.976	0.949	0.961	0.961	0.951	0.930	1.004	0.981	1.298	0.771	0.954	0.963	0.965	0.972	0.997
2019/20	1.010	1.036	0.981	1.001	0.975	1.000	0.963	1.008	0.983	1.248	0.812	0.946	0.915	1.000	0.985	0.980
2020/21	0.955	0.988	0.928	0.974	0.951	0.948	0.919	0.989	0.970	1.195	0.865	1.014	0.994	0.957	0.959	1.017

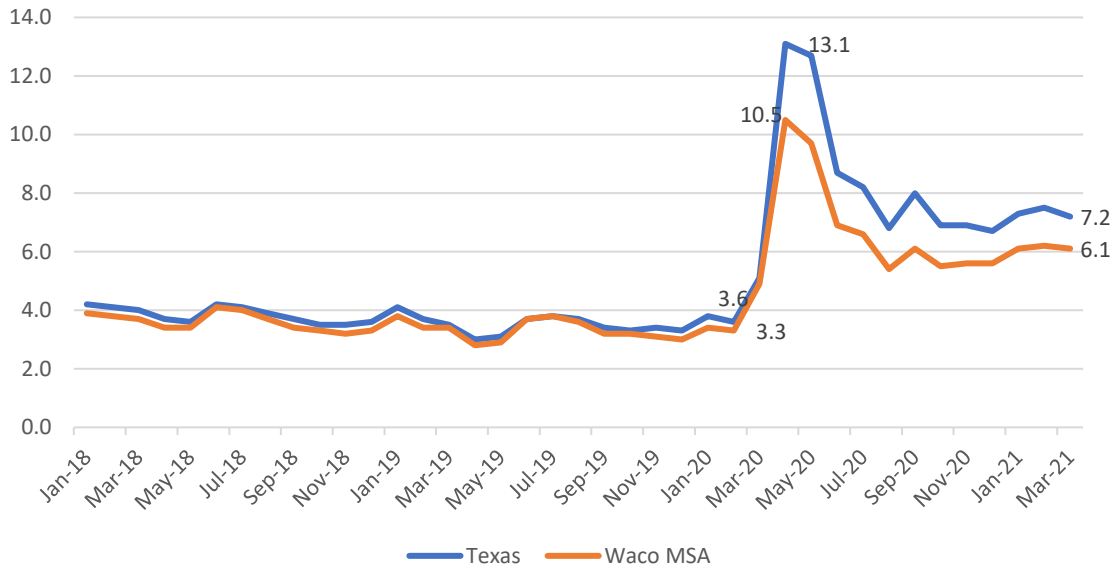
- Waco ISD lost 329 students this fall
- WISD declines in EE/PK, KG and early elementary grades due to a Covid-19 impact
- Most districts in Central Texas saw an average 4%-5% decline from projected enrollment due to Covid-19



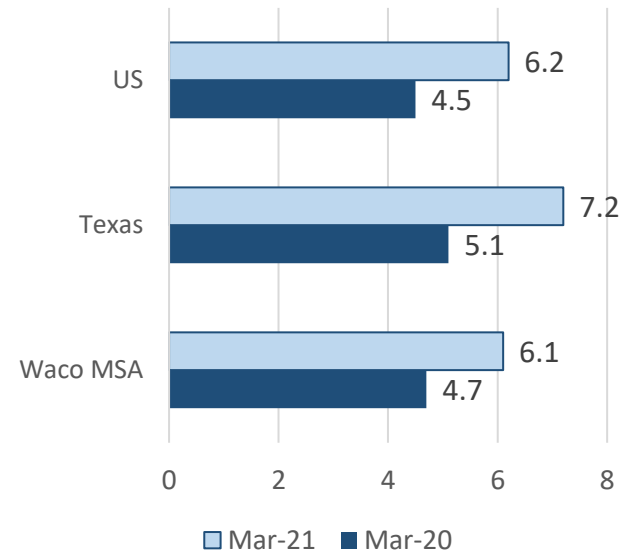


# Local Economic Update

### Unemployment Rates, Jan 2018 - March 2021



### Unemployment Rates, Year Over Year





## Local Economic Activity



### Amazon Distribution Center

- Amazon is building a \$215 million 700,200 sqft distribution center in Waco Industrial Park off Exchange Parkway
- The facility will add 1,000 workers with a starting wage of \$15 an hour plus benefits
- Groundwork started on the site in July and should open fall 2021

### Hello Bello

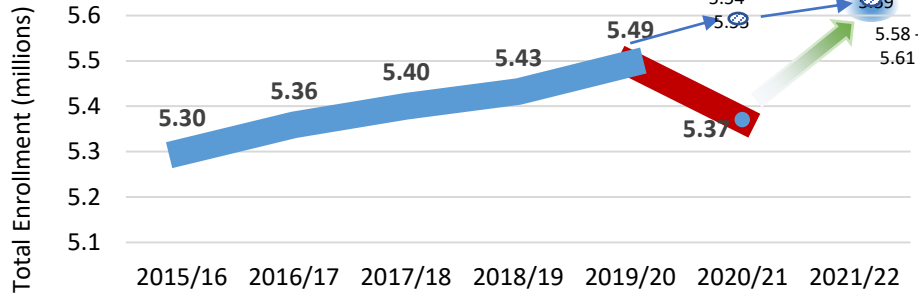
- Hello Bello plans to open its first diaper distribution & Manufacturing center in Waco
- Will take over 312,000 sq. ft. facility located at 2101 Texas Central Pkwy
- Facility will create 145 new positions
- Company plans to invest \$31 million into facility
- Grand opening anticipated summer 2021





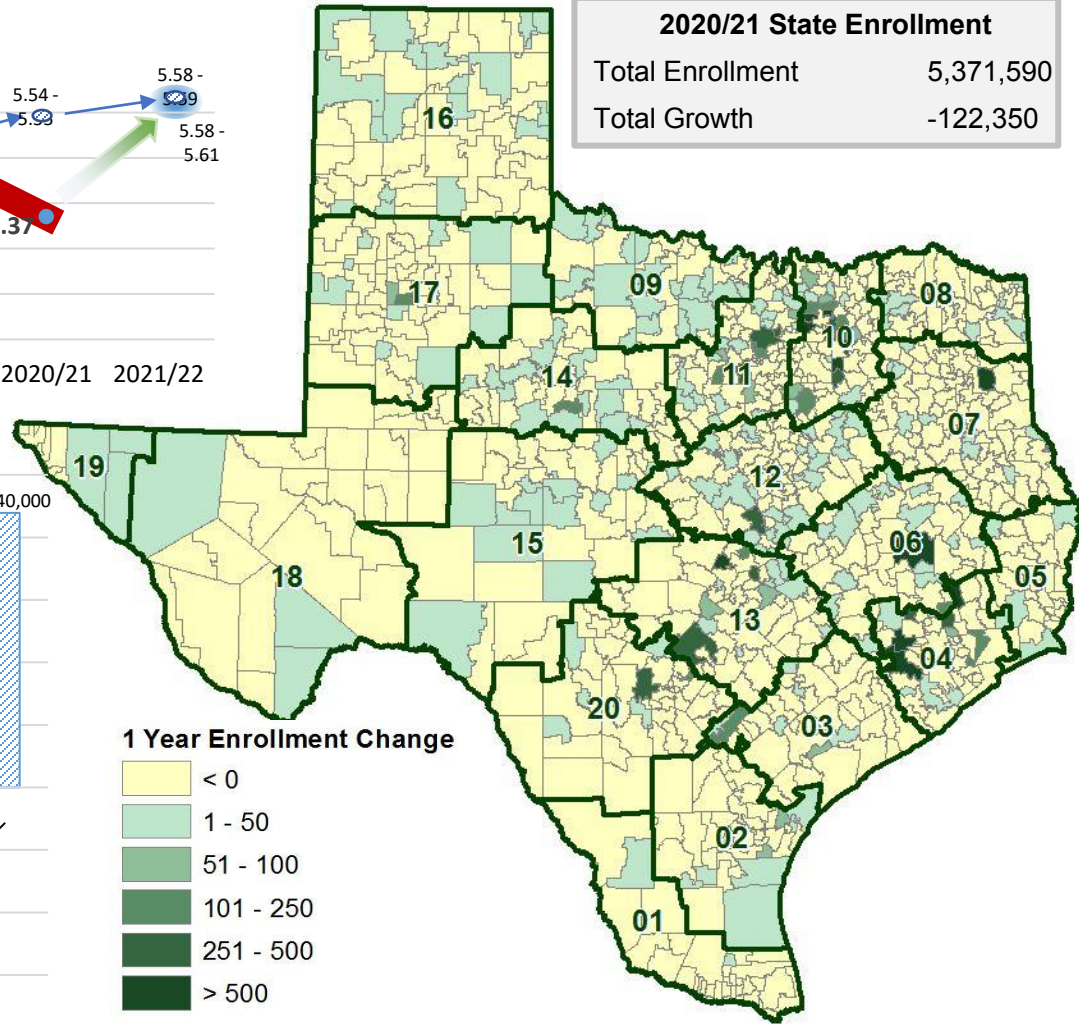
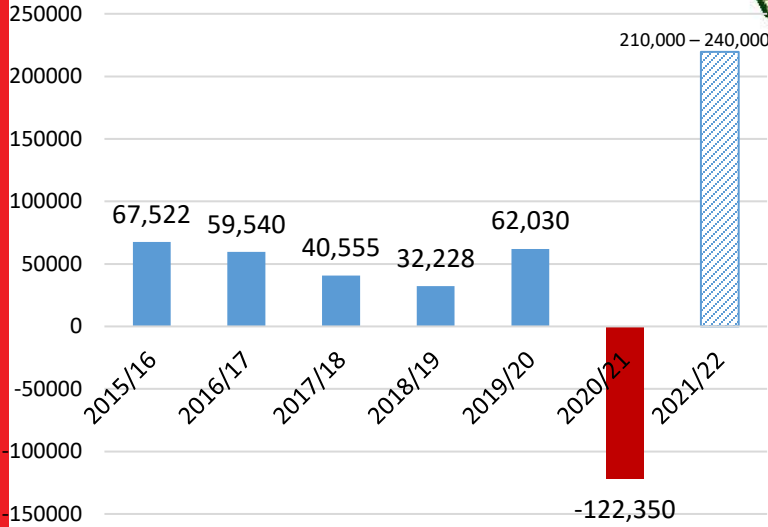
# State Enrollment Trends

## Texas ISD Enrollment



2020/21 State Enrollment	
Total Enrollment	5,371,590
Total Growth	-122,350

## Texas ISD Enrollment Change

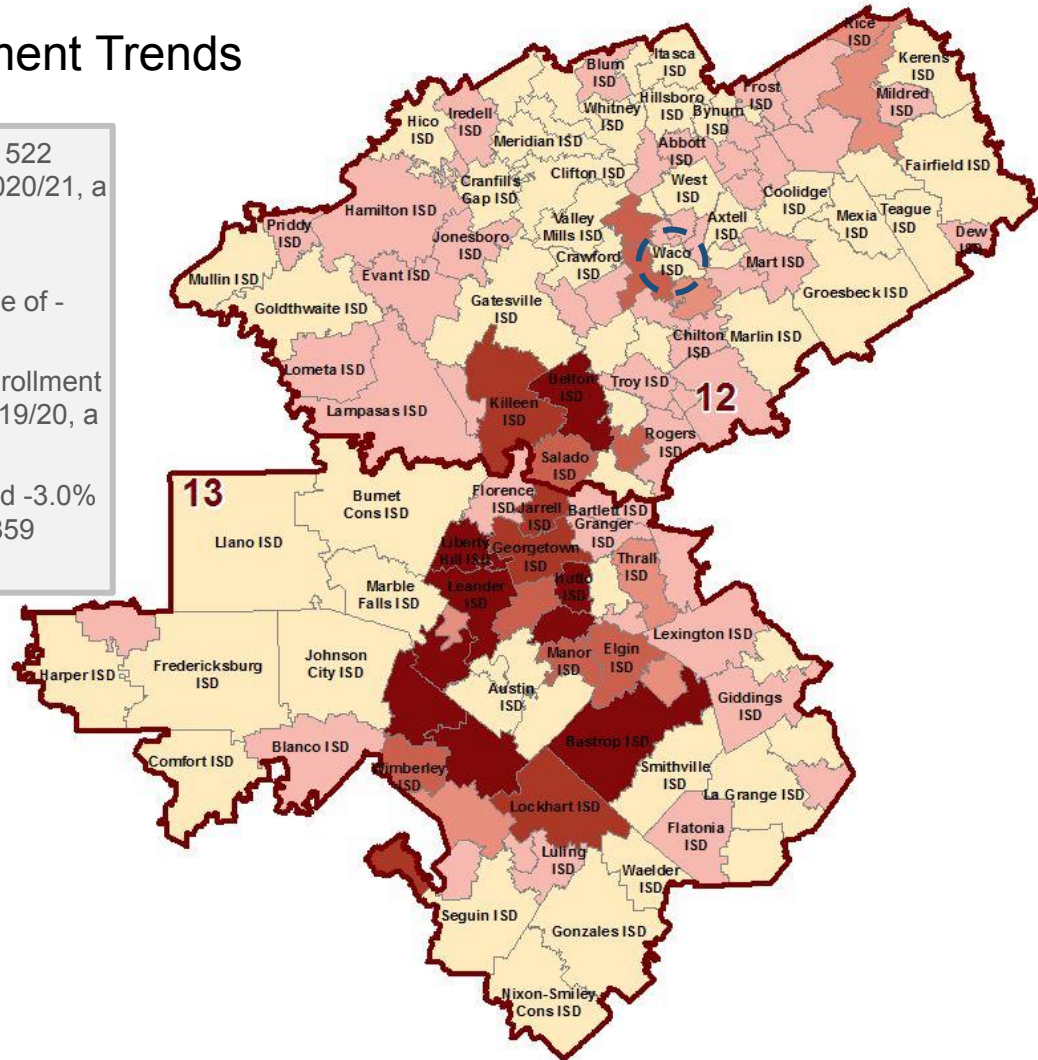
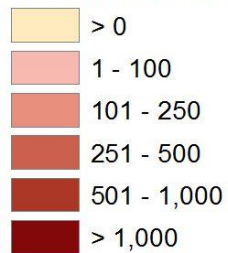




## Region 12 & 13 Enrollment Trends

- Waco ISD enrollment declined by 522 students between 2015/16 and 2020/21, a decrease of -3.5%
- WISD enrollment declined by 471 students from 2019/20, a decrease of -3.2%
- Region 12 has seen an overall enrollment decline of 3,312 students from 2019/20, a decline of -1.8%
- Region 13 enrollment has declined -3.0% from 2019/20, a difference of 11,859 students

### 5 Yr Enrollment Change





# District Demographic Snapshot

2021 Total District  
Population Estimate

**112,982**

**8.7%**

**103,902**

2010 Census  
District Population

Total District Population  
Below Age 19

**34,000**

**6.1%**

**32,052**

2010 Census District  
Population Below Age 19

2021 Total District  
Median Household Income

**\$36,445**

**32.1%**

**\$27,580**

2010 Census Total District  
Median Household Income

2021 District Households

**42,456**

**9.6%**

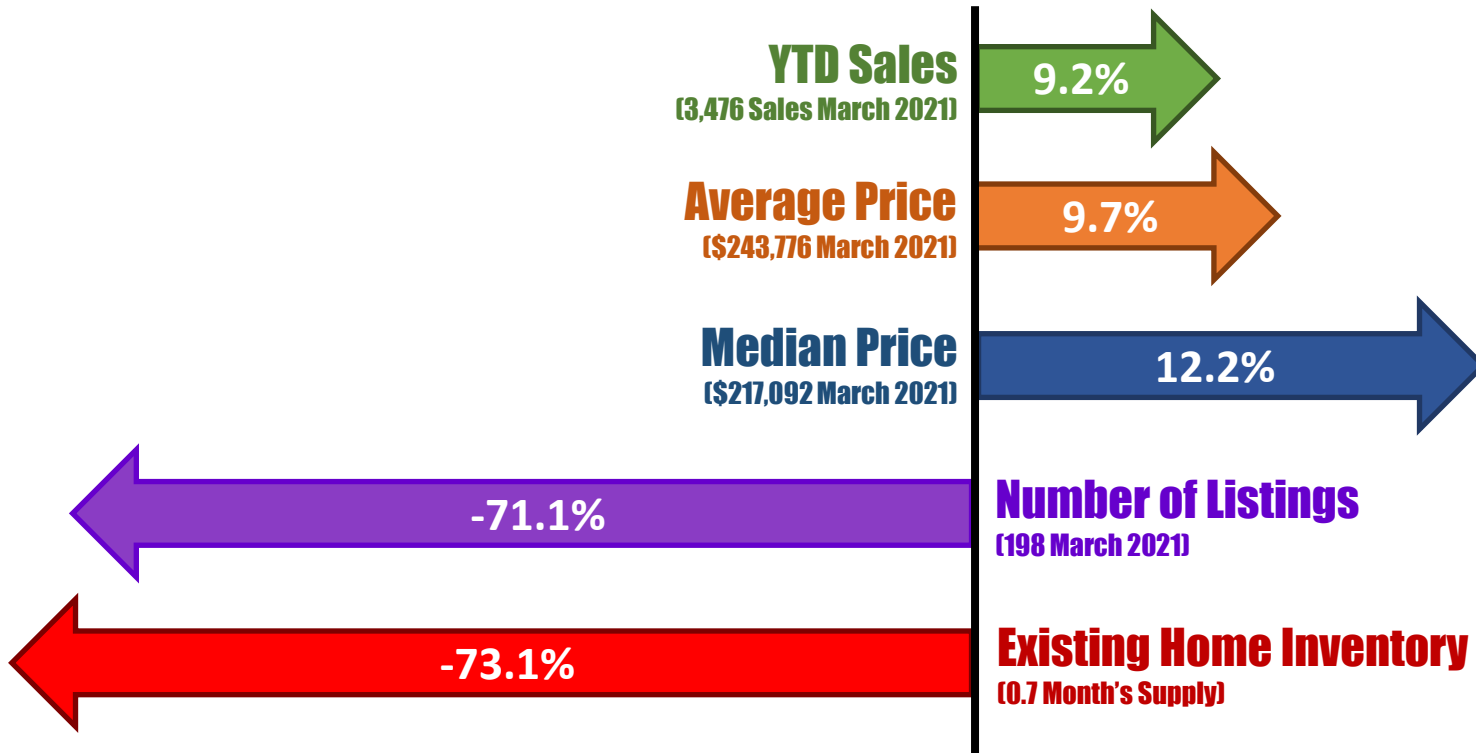
**38,727**

2010 District Households



# Waco Housing Market

MLS Year-Over-Year Single Family Housing Activity



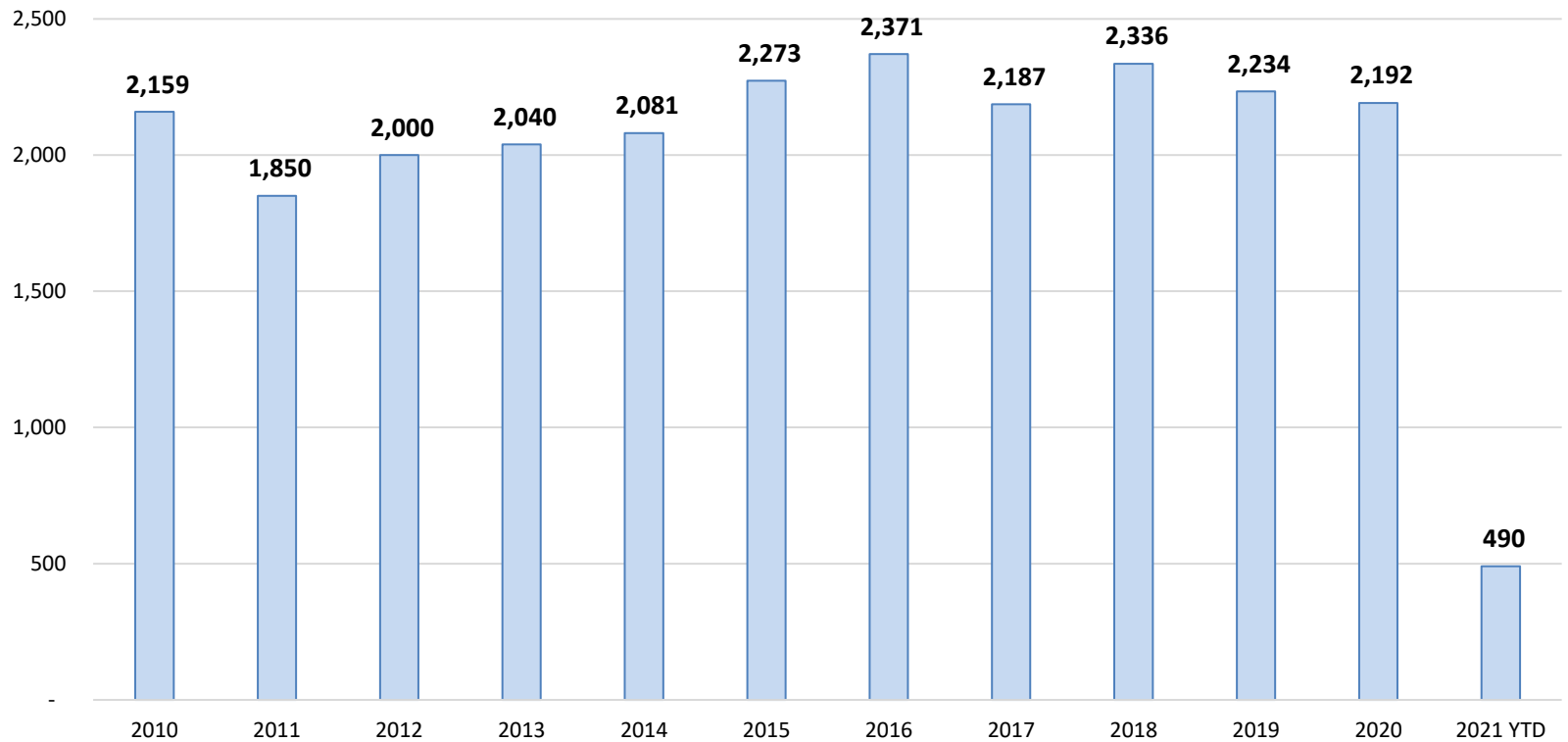
Source: Texas A&M Real Estate Center in partnership with the Waco BoR



# Waco ISD Housing Activity

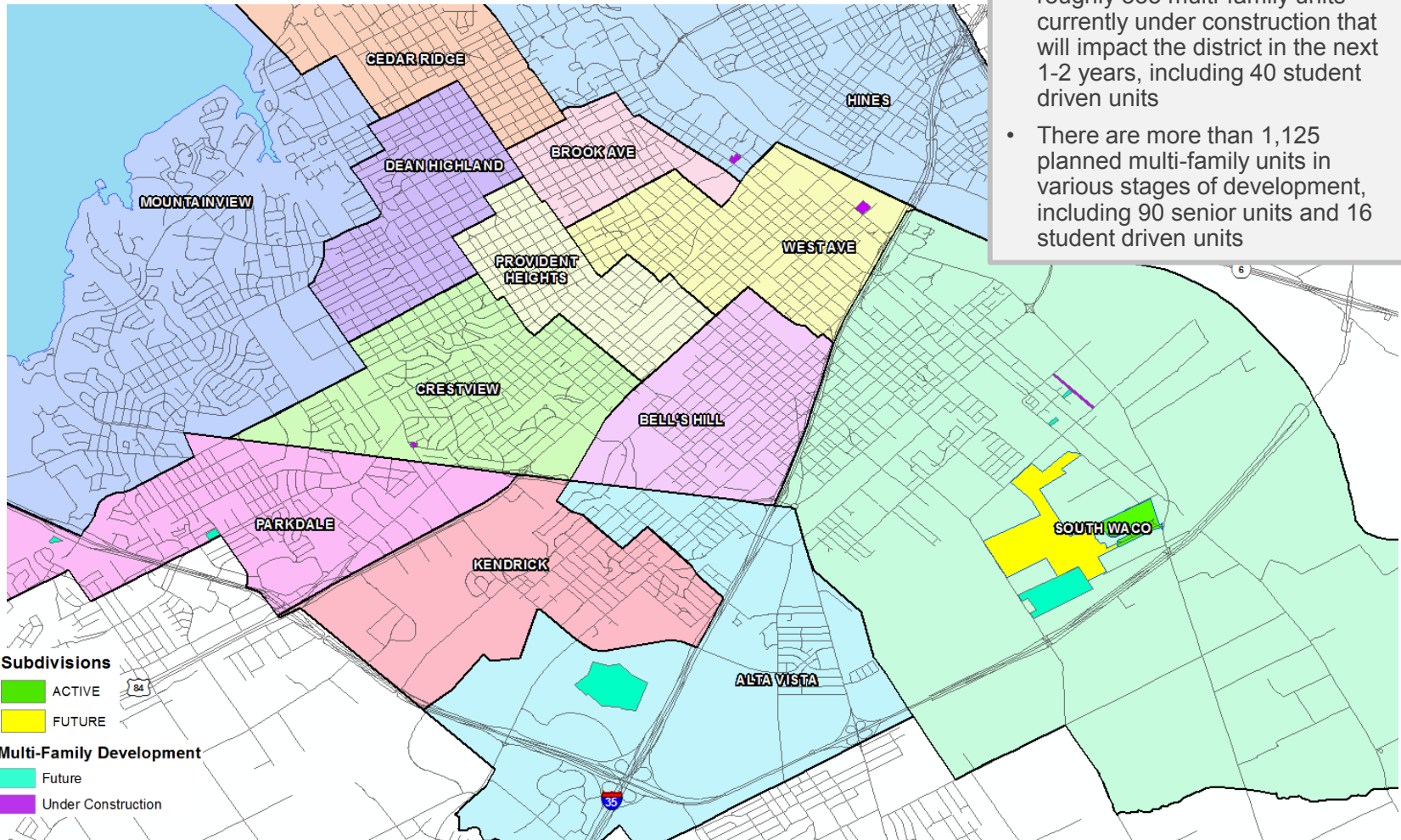
## Annual Home Sales, 2010 – March 2021

Total Annual Home Transactions, 2010 - March 2021





# District Housing Overview

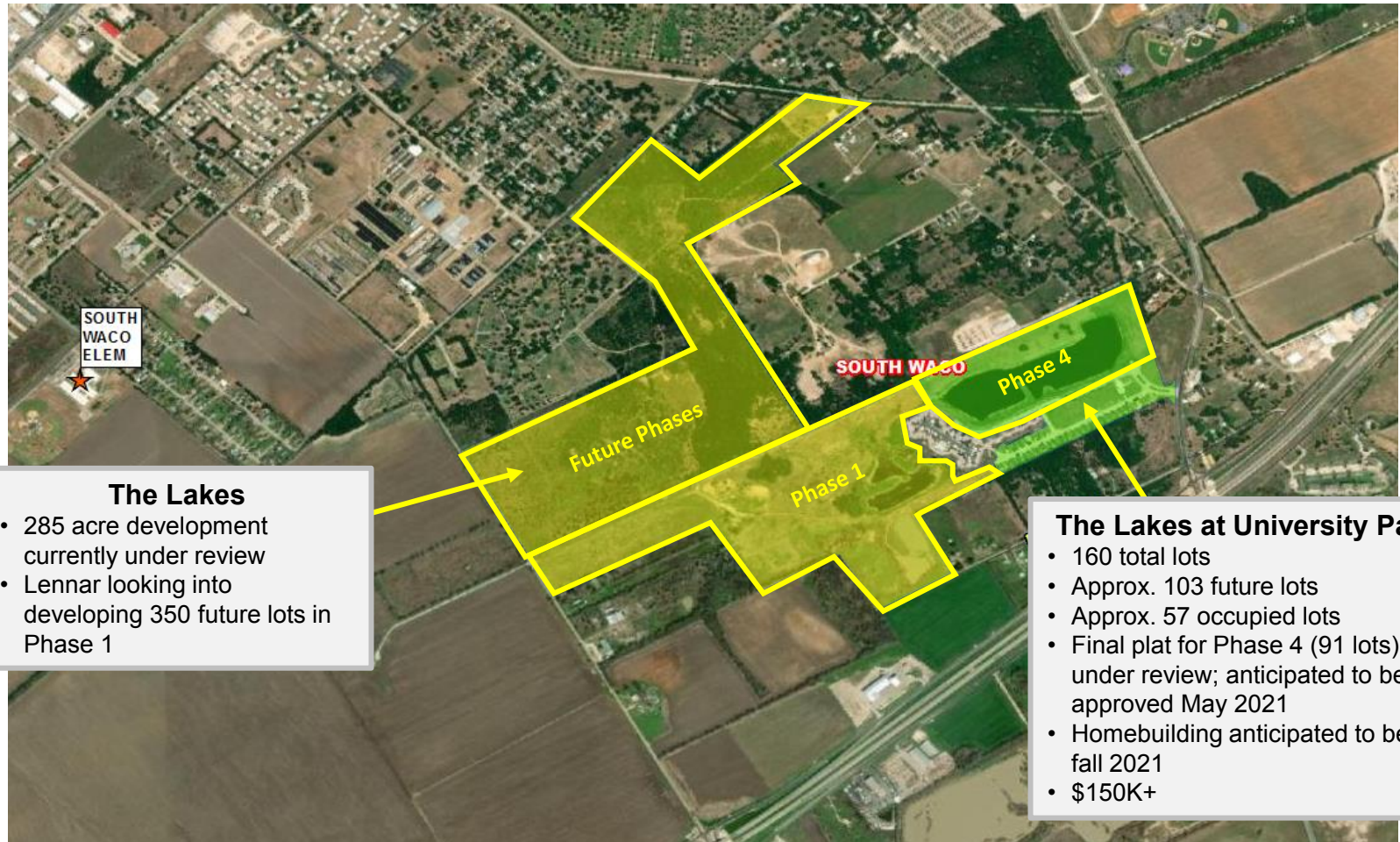


- Within Waco ISD there are roughly 335 multi-family units currently under construction that will impact the district in the next 1-2 years, including 40 student driven units
- There are more than 1,125 planned multi-family units in various stages of development, including 90 senior units and 16 student driven units





# Residential Activity



### The Lakes

- 285 acre development currently under review
- Lennar looking into developing 350 future lots in Phase 1

### The Lakes at University Parks

- 160 total lots
- Approx. 103 future lots
- Approx. 57 occupied lots
- Final plat for Phase 4 (91 lots) under review; anticipated to be approved May 2021
- Homebuilding anticipated to begin fall 2021
- \$150K+



# TEA Transfer Report

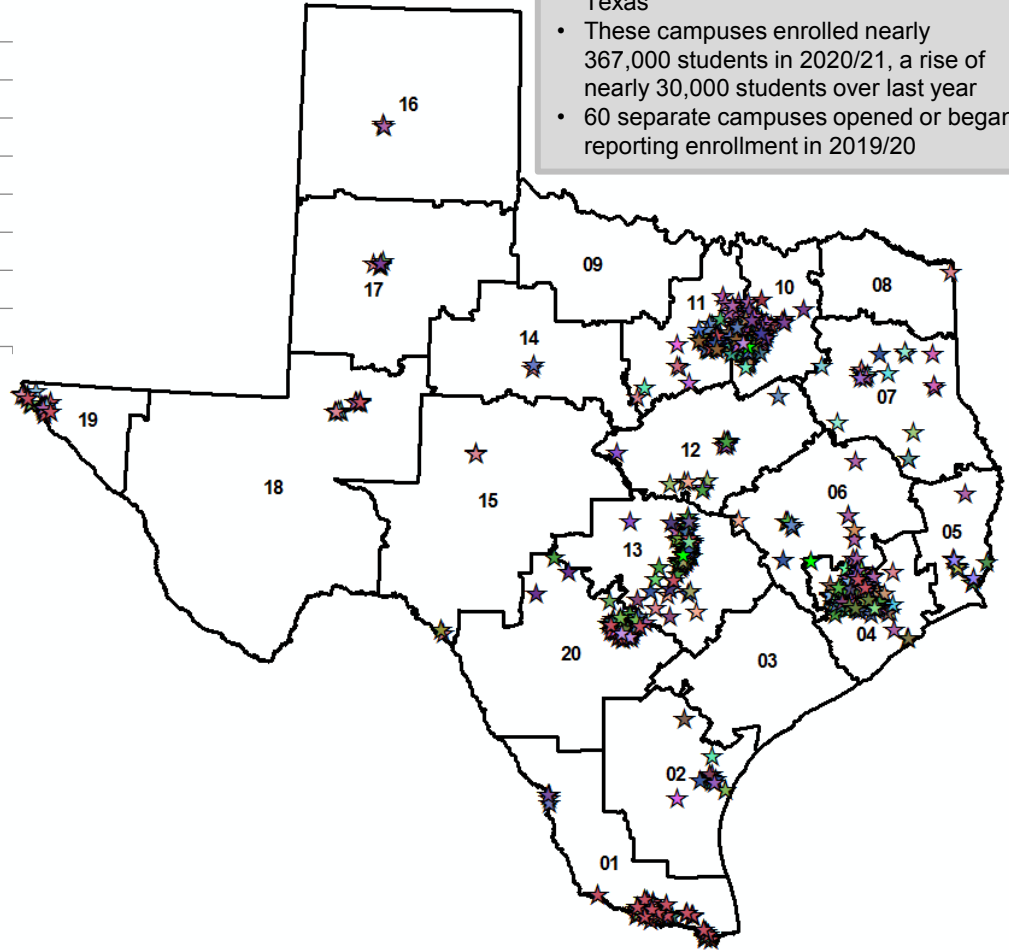
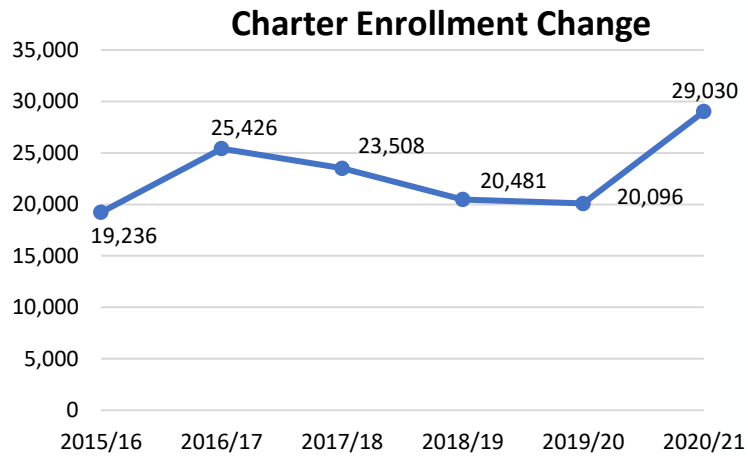
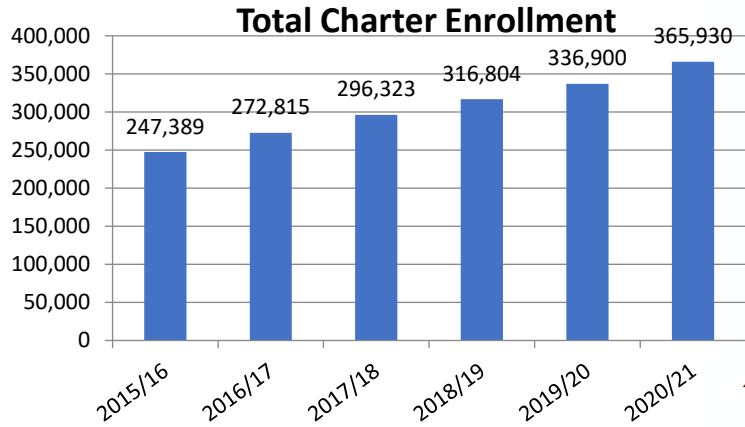
Transfers In From	2015/16	2016/17	2017/18	2018/19	2019/20	2020/21	5 Yr Change
Bosqueville ISD	3	8	3	3	11	10	+7
China Spring ISD	12	16	21	19	27	26	+14
Connally ISD	35	28	31	38	50	44	+9
La Vega ISD	27	34	40	41	41	33	+6
Midway ISD	60	64	64	94	104	82	+22
Robinson ISD	9	14	12	20	20	23	+14
<b>Total Transfers In*</b>	<b>179</b>	<b>187</b>	<b>209</b>	<b>261</b>	<b>298</b>	<b>257</b>	<b>+78</b>

Transfers Out To	2015/16	2016/17	2017/18	2018/19	2019/20	2020/21	5 Yr Change
Bosqueville ISD	52	41	45	41	44	44	-8
China Spring ISD	11	10	11	3	14	10	-1
Connally ISD	11	10	20	17	22	13	+2
Hallsville ISD	12	12	14	21	23	42	+30
Harmony Science Academy	648	669	928	1,031	973	1,014	+366
La Vega ISD	22	24	23	23	26	36	+14
Lorena ISD	3	8	12	3	3	3	0
McGregor ISD	6	12	17	15	16	11	+5
Midway ISD	217	184	176	148	117	109	-108
Premier High Schools	128	99	103	118	123	99	-29
Rapoport Academy Public School	588	609	641	643	667	645	+57
Robinson ISD	37	58	66	66	78	63	+26
Texas College Preparatory Academie	9	17	16	3	3	3	-6
University of Texas Charter School	134	121	135	105	101	89	-45
Waco Charter School	217	202	215	205	235	216	-1
<b>Total Transfers Out*</b>	<b>2,149</b>	<b>2,115</b>	<b>2,475</b>	<b>2,512</b>	<b>2,512</b>	<b>2,476</b>	<b>+327</b>

\*Totals include additional districts per TEA rounding rules



# Charter Schools in Texas



- There are currently more than 830 charter school campuses open across Texas
- These campuses enrolled nearly 367,000 students in 2020/21, a rise of nearly 30,000 students over last year
- 60 separate campuses opened or began reporting enrollment in 2019/20





# Ten Year Forecast by Grade Level

Year (Oct.)	EE/PK	K	1st	2nd	3rd	4th	5th	6th	7th	8th	9th	10th	11th	12th	Total	Total Growth	% Growth
2016/17	1,023	1,191	1,269	1,188	1,224	1,147	1,125	1,079	938	1,032	1,207	1,086	877	695	15,081		
2017/18	977	1,163	1,175	1,186	1,124	1,180	1,069	997	1,027	927	1,295	963	899	838	14,821	-260	-1.7%
2018/19	1,034	1,156	1,135	1,115	1,140	1,080	1,122	994	1,001	1,008	1,203	999	919	866	14,772	-49	-0.3%
2019/20	1,032	1,167	1,198	1,113	1,116	1,112	1,080	1,081	1,002	984	1,258	977	945	841	14,906	134	0.9%
2020/21	771	1,114	1,153	1,112	1,084	1,061	1,054	993	1,069	972	1,176	1,088	991	939	14,577	-329	-2.2%
2021/22	988	1,109	1,150	1,111	1,114	1,064	1,033	988	993	1,052	1,206	994	1,060	963	14,825	248	1.7%
2022/23	994	1,123	1,117	1,100	1,084	1,090	1,043	970	988	980	1,311	1,002	954	996	14,752	-73	-0.5%
2023/24	991	1,117	1,136	1,078	1,082	1,058	1,070	985	978	972	1,229	1,092	960	913	14,661	-91	-0.6%
2024/25	985	1,112	1,138	1,095	1,059	1,055	1,028	1,000	981	965	1,216	1,029	1,052	923	14,639	-23	-0.2%
2025/26	1,013	1,142	1,120	1,088	1,067	1,039	1,031	953	1,001	973	1,193	1,015	988	1,007	14,630	-9	-0.1%
2026/27	1,009	1,143	1,160	1,079	1,070	1,038	1,022	961	950	986	1,208	996	975	954	14,551	-79	-0.5%
2027/28	1,037	1,172	1,164	1,114	1,052	1,039	1,016	950	961	938	1,207	1,008	957	937	14,552	1	0.0%
2028/29	1,062	1,206	1,190	1,119	1,092	1,025	1,013	953	954	953	1,174	1,005	969	920	14,636	84	0.6%
2029/30	1,069	1,207	1,228	1,141	1,091	1,058	1,004	949	957	943	1,193	984	966	933	14,724	88	0.6%
2030/31	1,083	1,227	1,230	1,183	1,114	1,063	1,038	945	950	946	1,180	998	946	928	14,831	107	0.7%

Yellow box = largest grade per year  
 Green box = second largest grade per year





# Ten Year Forecast by Elementary Campus

Campus	Capacity	ENROLLMENT PROJECTIONS											
		2019/20	Fall 2020/21	2021/22	2022/23	2023/24	2024/25	2025/26	2026/27	2027/28	2028/29	2029/30	2030/31
Alta Vista Elementary	580	501	478	503	513	498	499	496	492	489	482	481	490
Bell's Hill Elementary	1090	737	737	748	743	731	734	727	717	717	723	734	751
Brook Avenue Elementary	500	373	375	388	390	384	377	386	377	376	375	379	381
Cedar Ridge Elementary	650	537	514	553	549	540	545	532	532	543	550	549	553
Crestview Elementary	750	572	471	473	456	460	454	448	454	451	461	463	473
Highland Elementary	870	702	635	667	675	669	659	666	679	687	711	716	731
Hillcrest PDS Magnet School	440	441	441	438	439	436	431	436	430	435	439	446	456
Hines Elementary	720	491	455	442	427	438	416	414	426	437	449	454	464
Kendrick Elementary	500	524	518	518	514	524	525	519	519	521	528	530	541
Lake Air Montessori School	920	787	748	764	769	787	803	820	826	815	831	841	854
Mountainview Elementary	520	399	399	420	419	416	408	409	411	424	425	433	438
Parkdale Elementary	570	664	625	632	617	615	610	625	624	643	660	682	698
Provident Heights Elementary	520	380	363	388	391	392	387	389	395	402	405	415	418
South Waco Elementary	820	544	480	505	520	524	530	533	538	543	545	555	564
West Avenue Elementary	490	355	293	307	300	300	301	314	312	315	325	328	336
<b>ELEMENTARY TOTALS</b>	<b>9,940</b>	<b>8,007</b>	<b>7,532</b>	<b>7,747</b>	<b>7,724</b>	<b>7,714</b>	<b>7,679</b>	<b>7,713</b>	<b>7,731</b>	<b>7,797</b>	<b>7,908</b>	<b>8,003</b>	<b>8,148</b>
Elementary Absolute Growth		56	-475	215	-23	-10	-35	34	18	65	112	95	145
Elementary Percent Growth		0.70%	-5.93%	2.85%	-0.30%	-0.12%	-0.46%	0.44%	0.24%	0.84%	1.43%	1.20%	1.81%





# Ten Year Forecast by Secondary Campus

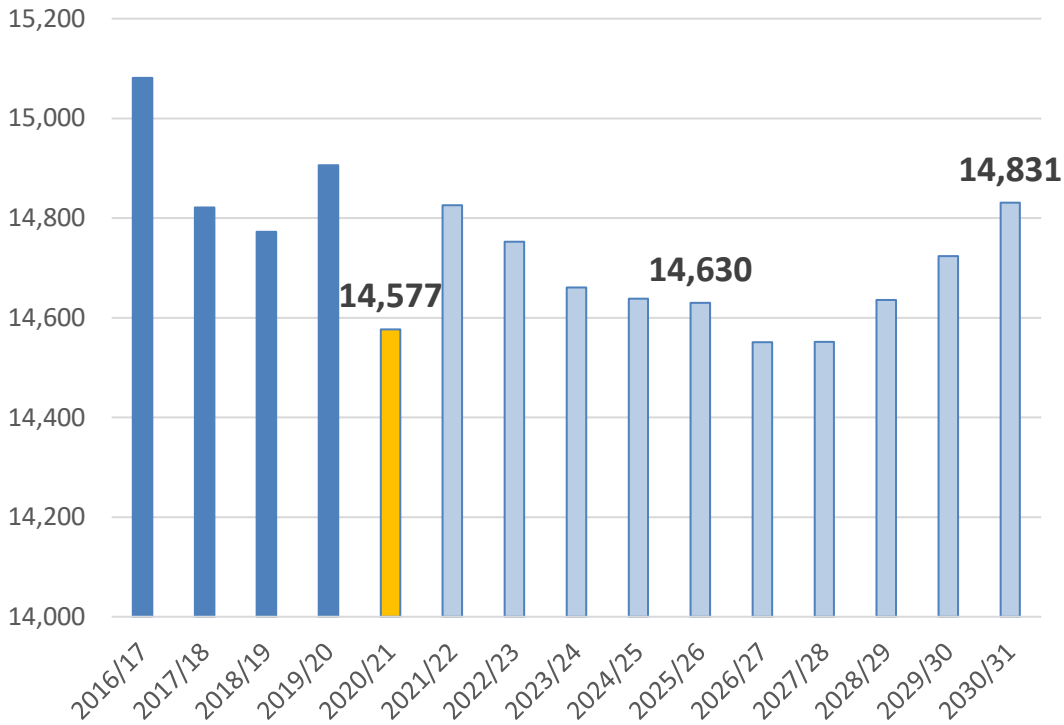
Campus	Capacity	ENROLLMENT PROJECTIONS											
		2019/20	Fall 2020/21	2021/22	2022/23	2023/24	2024/25	2025/26	2026/27	2027/28	2028/29	2029/30	2030/31
Cezar Chavez Middle School	1,060	924	919	925	905	892	876	896	896	918	922	915	894
Carver Middle School	940	432	465	466	462	431	435	427	431	411	401	401	405
Indian Spring Middle School	930	561	524	520	476	489	500	493	480	474	473	479	476
Tennyson Middle School	790	920	942	942	920	939	926	896	878	841	861	847	854
<b>JUNIOR HIGH TOTALS</b>	<b>3,720</b>	<b>2,837</b>	<b>2,850</b>	<b>2,853</b>	<b>2,763</b>	<b>2,751</b>	<b>2,737</b>	<b>2,712</b>	<b>2,685</b>	<b>2,644</b>	<b>2,657</b>	<b>2,642</b>	<b>2,629</b>
Junior High Absolute Growth		44	13	3	-90	-12	-14	-25	-27	-41	13	-15	-13
Junior High Percent Growth		1.58%	0.46%	0.11%	-3.15%	-0.43%	-0.51%	-0.91%	-1.00%	-1.53%	0.49%	-0.56%	-0.49%
Brazos High School	370	185	146	185	172	168	175	171	171	172	172	172	172
University High School	2,150	1,689	1,896	1,896	1,869	1,879	1,884	1,883	1,864	1,824	1,837	1,857	1,869
Waco High School	2,480	2,089	2,132	2,120	2,201	2,126	2,140	2,127	2,076	2,091	2,038	2,026	1,989
<b>HIGH SCHOOL TOTALS</b>	<b>5,000</b>	<b>3,963</b>	<b>4,174</b>	<b>4,201</b>	<b>4,242</b>	<b>4,173</b>	<b>4,199</b>	<b>4,181</b>	<b>4,111</b>	<b>4,087</b>	<b>4,047</b>	<b>4,055</b>	<b>4,030</b>
High School Absolute Growth		35	211	27	41	-69	26	-17	-70	-24	-41	8	-25
High School Percent Growth		0.89%	5.32%	0.64%	0.98%	-1.64%	0.63%	-0.41%	-1.68%	-0.58%	-1.00%	0.20%	-0.61%
Bill Logue Detention Center		9	4	8	7	7	7	7	7	7	7	7	7
Challenge Academy		27	6	6	6	6	6	6	6	6	6	6	6
Wiley Opportunity Center	420	64	11	11	11	11	11	11	11	11	11	11	11
<b>ALTERNATIVE TOTALS</b>	<b>420</b>	<b>100</b>	<b>21</b>	<b>25</b>	<b>24</b>	<b>24</b>	<b>24</b>	<b>24</b>	<b>24</b>	<b>24</b>	<b>24</b>	<b>24</b>	<b>24</b>
<b>DISTRICT TOTALS</b>	<b>19,080</b>	<b>14,907</b>	<b>14,577</b>	<b>14,826</b>	<b>14,753</b>	<b>14,661</b>	<b>14,639</b>	<b>14,630</b>	<b>14,552</b>	<b>14,552</b>	<b>14,636</b>	<b>14,724</b>	<b>14,831</b>
District Absolute Growth		135	-330	249	-73	-92	-22	-9	-79	1	84	88	107
District Percent Growth		0.9%	-2.2%	1.7%	-0.5%	-0.6%	-0.2%	-0.1%	-0.5%	0.0%	0.6%	0.6%	0.7%





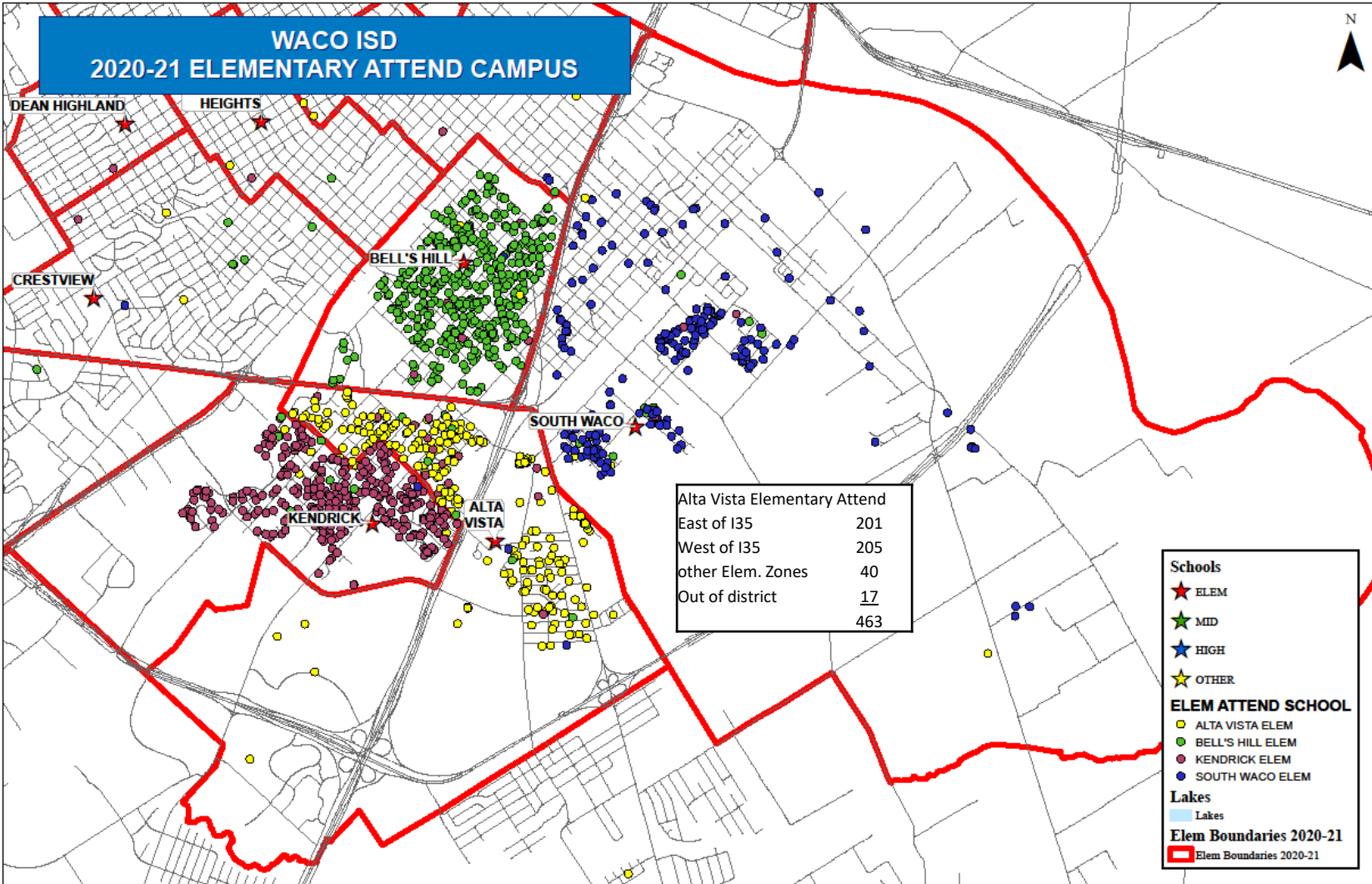
# Key Takeaways

District Enrollment



- Waco ISD enrollment is down 330 students due to Covid-19 pandemic concerns.
- The district’s Kindergarten class is expected to continue to decline due to a drop in the number of births within Waco ISD.
- Waco ISD has more than 450 planned future lots under review in South Waco Elementary zone
- 2025/26 enrollment: 14,630
- 2030/31 enrollment: 14,831

# WACO ISD 2020-21 ELEMENTARY ATTEND CAMPUS



**Schools**

- ★ ELEM
- ★ MID
- ★ HIGH
- ★ OTHER

**ELEM ATTEND SCHOOL**

- ALTA VISTA ELEM
- BELL'S HILL ELEM
- KENDRICK ELEM
- SOUTH WACO ELEM

**Lakes**

- Lakes

**Elem Boundaries 2020-21**

- Elem Boundaries 2020-21





Questions?



# Elementary School Strategy

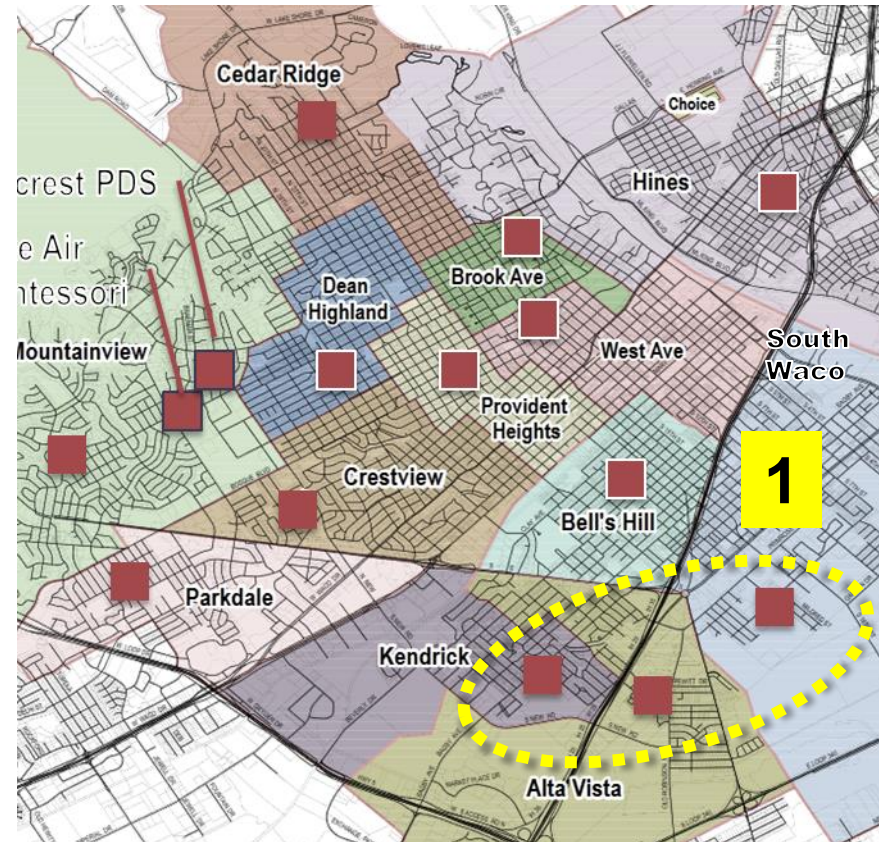


O'CONNELL  
ROBERTSON



# Facilities Master Plan – Immediate Priority

1. Alta Vista ES, Kendrick ES, and South Waco ES are close in proximity
2. Low facility conditions assessment (FCA) + educational suitability (ESA) scores
3. Enrollment is mis-aligned: either
  - a. Under permanent capacity
  - b. Using portables to meet enrollment



**3**

Campus	Capacity	ENROLLMENT PROJECTIONS											
		2019/20	Fall 2020/21	2021/22	2022/23	2023/24	2024/25	2025/26	2026/27	2027/28	2028/29	2029/30	2030/31
Alta Vista Elementary	580	501	478	503	513	498	499	496	492	489	482	481	490
Kendrick Elementary	500	524	518	518	514	524	525	519	519	521	528	530	541
South Waco Elementary	820	544	480	505	520	524	530	533	538	543	545	555	564

## Proposed Immediate Priority





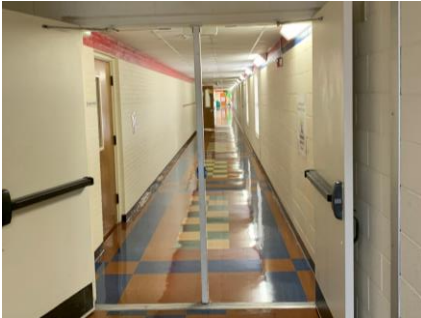
10.04 acres

Google

# Kendrick ES



# Kendrick Elementary School



- Originally Built in 1952 (2002 gym)
- Capacity = 500 students
- FCA Need for 15 years = \$16.0M
- Cafeteria = 2,200 sf (2,800 sf at modern ES for 500)
- Library = 1,970 sf (3,000 sf at modern ES for 500)
- Classrooms are +/- 840 sf (725 sf at Modern ES)
- Top 5 ESA Needs: Collaborative Spaces, Library / Media Center, Security, Academic + Academic Support, and Building Exterior

Full site is 20.31 acres – approximately half is school



## South Waco ES

# South Waco Elementary School



- Originally Built in 1989
- Capacity = 820 students
- FCA Need for 15 years = \$13.9M
- Cafeteria = 3,750 sf (4,700 sf at modern ES of 820)
- Library = 2,050 sf (4,000 sf at modern ES of 820)
- Classrooms are +/- 650sf (725 sf at Modern ES)
- Top 5 ESA Needs: Collaborative Spaces, Technology, Security, Academic + Academic Support, and FFE





# Alta Vista ES



# Alta Vista Elementary School



- Originally Built in 1910 (1989 addition, 2018 Inspiration)
- Capacity = 580 students
- FCA Need for 15 years = \$10.2M
- Cafeteria = 2,550 sf (2,300 sf at modern ES of 580)
- Library = 1,540 sf (3,400 sf at modern ES of 580)
- Classrooms are +/- 650 sf (725 sf at Modern ES)
- Top 5 ESA Needs: Collaborative Spaces, Library / Media Center, Technology, Academic + Academic Support, and Controllability of Systems

### Minor to Moderate Need

- West Avenue
- Provident Heights
- Brook Avenue
- Dean Highland
- JH Hines
- Bell's Hill
- Lake Air Montessori

Maintain existing campuses through FCA + ESA needs

### Moderate to Significant Need

- Crestview
- Alta Vista
- Parkdale
- Cedar Ridge
- Mountainview
- South Waco
- Kendrick
- Hillcrest PDS

New and/or Renovated Elementary Schools over time

## ES Long Term Vision Goals

- Address Schools with the highest need
- Provide additional educational support staff + increase operational efficiencies
- Align campuses and capacity to demographers projected 10-year need over multiple bond programs

# Facility Master Plan

### Immediate Priority

Address Kendrick ES, South Waco ES, and Alta Vista ES

### Long Term Priority

Continue an implementation plan of the long-term vision goals across the portfolio of Waco ISD elementary school campuses.

# Activity





# To show this poll

1

Install the app from  
[pollev.com/app](https://pollev.com/app)

2

Start the presentation

Still not working? Get help at [pollev.com/app/help](https://pollev.com/app/help)  
or

[Open poll in your web browser](#)

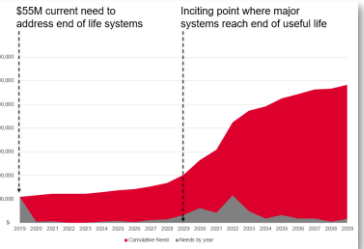
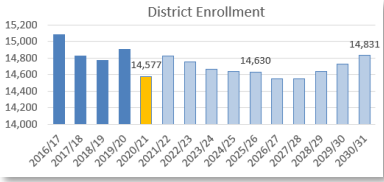
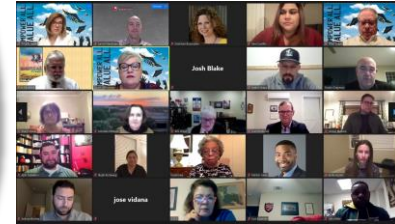
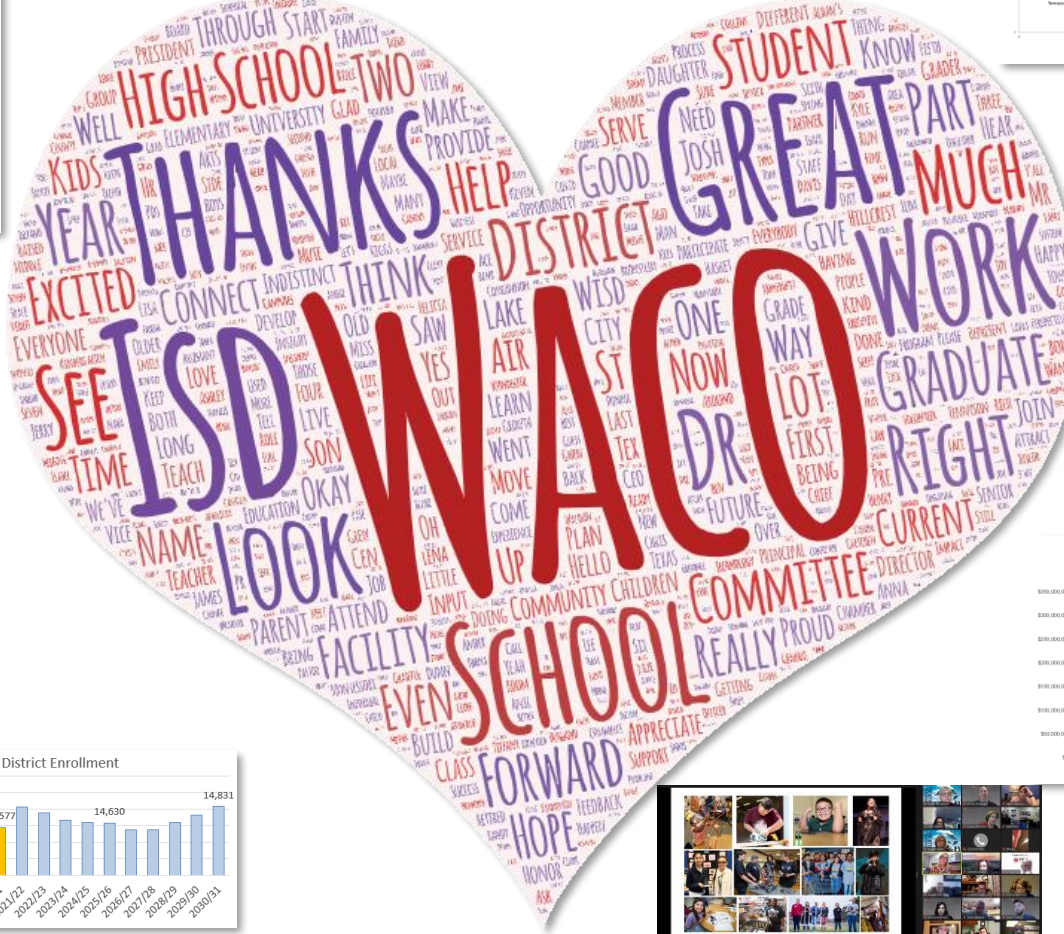
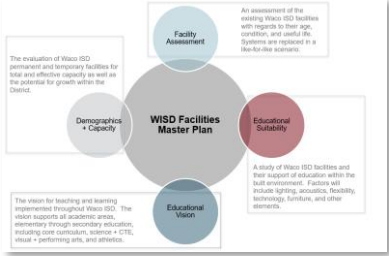


# Facility Master Plan Goals



O'CONNELL  
ROBERTSON

# Waco ISD Facilities Master Plan



# Waco ISD

## Facilities Master Plan Guiding Principles

### 1. Create facilities throughout Waco ISD in support of the District's vision for academic excellence.

- Student pride and attraction
- Teacher retention
- Individualized + Personal Learning
- 21<sup>st</sup> Century Learning
- Welcoming + Sustainable Environments

### 2. Ensure equity across primary and secondary campuses for academic and co-curricular programs

- Work for All Students
- Support Athletics + PFA Spaces
- CTE Support
- Special Education Support
- Provide centralized modern libraries
- Technology Support

### 3. Maintain and protect the community's investment in facilities while improving operational efficiency.

- Address Facility Needs
- Safe and healthy environments
- Minimize operational costs while maximizing student opportunity





## Immediate Priorities

- Waco High School
- Middle School Replacement for Carver / Indian Springs
- Middle School Replacement for Tennyson
- Elementary Schools: South Waco, Kendrick, and Alta Vista
- District Wide Goals
- Capital Improvement Projects from Facility Conditions Assessment



## Long Term Priorities

- Continued developed of the best opportunities for Waco ISD students from pre-kindergarten to student choice at high school
- Implementation plan of the long-term vision goals across the portfolio of Waco ISD elementary school campuses.
- District Wide Goals
- Capital Improvement Projects from FCA

# Waco ISD Facilities Master Plan

How well do the guiding principles and priorities align with your expectations of support the long-term vision of the district?

**Breakout Group Guidelines:**

- Automatic split into small groups
- 20 minutes to discuss with 1 minute warning
- Each group will have an O'Connell Robertson moderator to discuss the prompt
- O'Connell Robertson will summarize the small group's discussion
- Automatic regroup and sharing with large group
- Add additional detail of your group's findings in the chat



# To show this poll

1

Install the app from  
[pollev.com/app](https://pollev.com/app)

2

Start the presentation

Still not working? Get help at [pollev.com/app/help](https://pollev.com/app/help)  
or

[Open poll in your web browser](#)



# Wrap-Up & Next Steps



O'CONNELL  
ROBERTSON

**Meeting Schedule:**

1. ~~January 11~~
2. ~~January 25~~
3. ~~February 8~~
4. ~~March 1~~
5. ~~March 22~~
6. ~~April 12~~
7. ~~May 3~~
8. ~~May 24 - Bond Capacity, Prioritization of Projects~~

	Sunday	Monday	Tuesday	Wednesday	Thursday	Friday	Saturday
<b>Jan 2021</b>	3	4	5	6	7	8	9
	10	11 meeting 1	12	13	14	15	16
	17	18 School Closed	19	20	21	22	23
	24	25 meeting 2	26	27	28	29	30
	31	1	2	3	4	5	6
<b>Feb 2021</b>	7	8 meeting 3	9	10	11	12	13
	14	15 School Closed	16	17	18	19	20
	21	22	23	24	25	26	27
	28	1 meeting 4	2	3	4	5	6
<b>March 2021</b>	7	8 School Closed	9 School Closed	10 School Closed	11 School Closed	12 School Closed	13
	14	15	16	17	18	19	20
	21	22 meeting 5	23	24	25	26	27
	28	29	30	31	1	2 School Closed	3
<b>April 2021</b>	4	5	6	7	8	9	10
	11	12 meeting 6	13	14	15	16	17
	18	19	20	21	22	23	24
	25	26	27	28	29	30	1
<b>May 2021</b>	2	3 meeting 7	4	5	6	7	8
	9	10	11	12	13	14	15
	16	17	18	19	20	21	22
	23	24 meeting 8	25	26	27	28	29
	30	31 School Closed	1	2	3	4	5

# Meeting Schedule



# Questions + Feedback



O'CONNELL  
ROBERTSON



Thank  
You!



O'CONNELL  
ROBERTSON

Next Meeting: Monday, May 24<sup>th</sup> @ 6:30pm