

Focused on Learning for Every Student Every Day.



Welcome... To KinderCamp 2024

Hello! I'm...

Mrs. Jenna Rucker —
School Principal

I'm heading into my 5th year here
at Richland Elementary School!



Today we will...



Get to know your school and get to know each other!



Connect with PTO, sign up for opportunities to volunteer



Hear about all the great learning experiences your child had in their sessions, and a bit about kindergarten



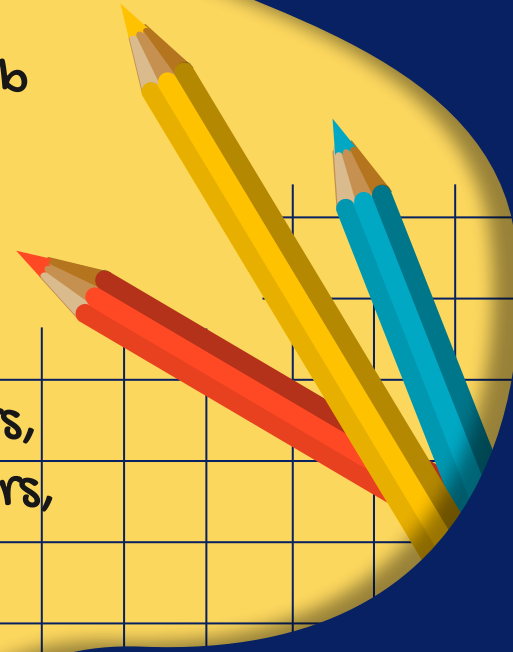
Modified building tour - see the physical building if you never have before

1
Let's get to know
Richland
Elementary School!

Did you know?

Richland Elementary School is the original high School of the district?

- A K-3 Public School serving students in the Gibsonia area
- Home to almost 500 students in kindergarten through third grade ; Richland is home to our K-3 District Autistic Support Hub
- Class size typically ranges from approximately 18-25 students
- Typical number of homeroom teachers (K-3) is approximately 21-23 with usually 5-6 sections per grade level
- Approximately 35-40 additional staff members, including the office staff, nurses, School counselor, special education teachers, reading specialists, intervention specialist, special area teachers, speech pathologist, occupational therapist, physical therapist, para-educators, cafeteria staff, and custodial staff



Click [HERE](#) to visit our homePage!

Did you know?

We've been making upgrades to our building and learning spaces:

- We have a new playground as of summer of 2023
- A new entryway mural as of Spring of 2022
- A newly renovated Library as of Summer of 2022
- Located in Gibsonsia, Richland Elementary School serves students in kindergarten through third grades. In 2023, U.S. News and World Report ranked Richland #52, the top 1.7%, of Pennsylvania Elementary Schools. We strive to provide the best academic experience possible for your child.



Click [HERE](#) to visit our homePage!



Eden Hall Grades 4-6



High School
Grades 9-12



Wexford
Grades K-3



MIDDLE SCHOOL
GRADES 7-8



Richland
Grades K-3



Hance
Grades K-3



Pine Richland School
District Mission: Focus on
Learning for Every
Student Every day



1
Let's get to know
EACH OTHER!

Do you know?

Mrs. Gina Hoffman

Year round office secretary

Can answer or guide you on any needs throughout the school year and summer

Extension 4802 when you call the building number (724)442-1558



Mrs. Marcy Russell

Ten month secretary

Focuses on attendance - daily calls and records, letters and truancy compliance

Extension 4801 when you call the building number (724)443-1558



Do you know?

Mrs. Beth Cassandro: bcassandro@pinerichland.org

Certified School Nurse
Health Office Hours
Monday through Friday
8:30 am to 4:15 pm
724-443-1558, Ext. 4805

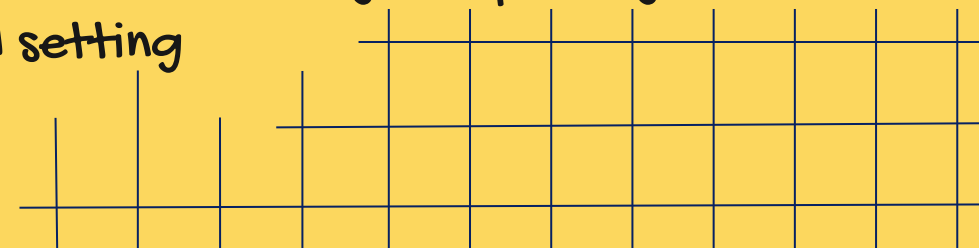
PR Website
"At your Service"
"Health Services"



Medication Policy

- Medication must be accompanied by a medication permission form which includes a physician and parent signature.
- Medications are not available in school unless provided by parents in the original container.
- This includes over the counter medication.
- Forms are available from the nurse or district website.

**video created with COVID protocols in place that are no longer impacting the school setting



Do you know?

Mrs. Amy Molitor: amolitor@pinerichland.org

- Individual Counseling
- Group Counseling
- Classroom Lessons
- Educational Support - MTSS
- RAMS Way Team Coach
- SO4 Plan Case Manager
- SAP Team Leader



Office Team Contact Information:



Jenna Rucker - Principal

jerucker@pinerichland.org

Beth Cassandro - School Nurse

bcassandro@pinerichland.org

Amy Molitor - School Counselor

amolitor@pinerichland.org

Gina Hoffman - Building Secretary

vhoffman@pinerichland.org

Marcy Russell - Building Secretary

mrussell@pinerichland.org

Do you know?

Your Kindergarten Teaching Team:

Mrs. Becky Fickes

rfickes@pinerichland.org

Mrs. Janel Kilpela

jkilpela@pinerichland.org

Mrs. Patty Kuremsky

pkuremsky@pinerichland.org



Focused on Learning for Every Student Every Day.



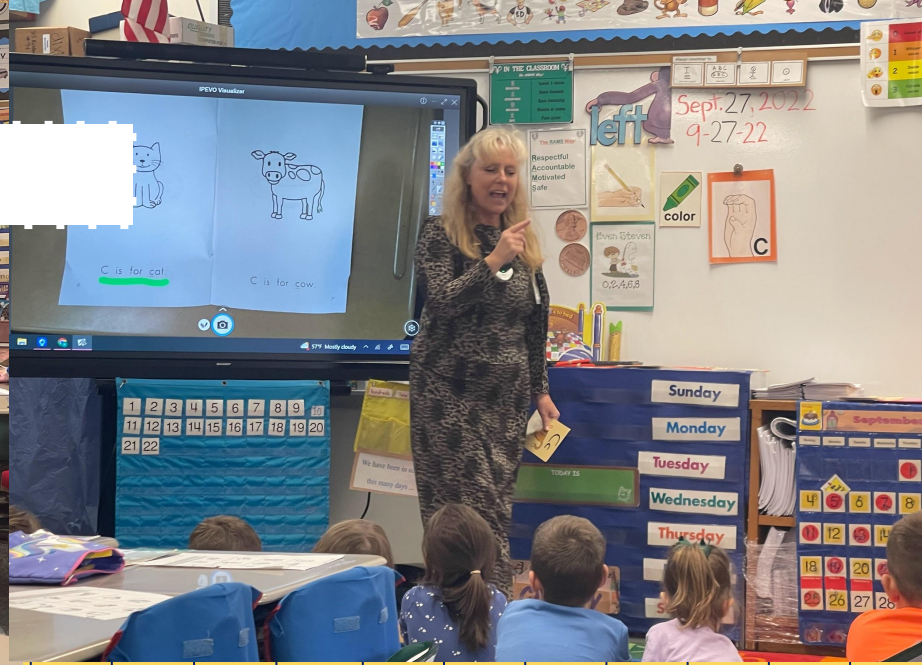
Mrs. Kilpela



Mrs. Fickes



Mrs. Kuremsky



2

Get connected to
the PTO

Did you know? The PTO does that!

Student Enrichment

- Funding assemblies and field trips
- Helping with RAMS Way initiatives and running the School Store
- Coordinating after-school programs such as Cooking & Baking, Spanish and Chess classes
- Refreshing outdoor and indoor recess activities
- Celebrating student birthdays with the Birthday Book Cart
- Coordinating book fair, holiday shop, and more



Did you know? The PTO does that!

Staff Appreciation

- Providing welcome back breakfast
- Organizing and providing Teacher Appreciation Week celebrations
- Providing back-to-school StartUp Funds for teachers
- Offering classroom support for events and parties
- Supplying new books and classroom materials



Did you know? The PTO does that!

Building Community

- Planning and hosting Family Fun Night, Movie Night and Heart Ball
- Organizing Dine Out Nights/Meet Up Days
- Assisting with school and community involvement projects such as Turkey Fund



Did you know? The PTO does that!



Fundraising

- Coordinating fundraisers throughout the year such as Gift of Time, BLOOM flowers and Spirit Wear sales
- Holding our first, ever Booster-thon Fun Run
- Raising money for building improvements, curriculum materials, recess equipment, classroom needs, and more



The PTO Supports Summer Reading

Join us at the Playground!

Join us for a summer storytime under the playground pavilion. Richland families are invited to meet at the Richland Elementary playground on July 10 from 10:00 am - 12:00 pm for a summer storytime, popsicles, crafts and playground play. Please RSVP by emailing ginamazzarese@gmail.com



PTO Summer Reading Program

The PTO Summer Reading Program encourages students to read at least one book this summer and complete a project about the book. The project can be a poster, report or drawing. Students who submit their project at the start of next school year will receive an invitation to a before-school breakfast and posters (no larger than 22 x 14) will be displayed in the hallways.



[Check out the reading list here.](#)

Support The RES PTO by Volunteering



HOW CAN YOU HELP?



- Volunteer for an event
- Follow on Social Media
- Become a Classroom Parent
- Find Community Partners
- Donate \$ or Supplies
- Support our Fundraisers
- Join a Committee
- Sponsor Staff Appreciation
- Email to participate at richlandramspto@gmail.com

[Sign Up to Volunteer!](#)

We are looking for help with Book Fair, Field Day, After School Programs, Mileage Club, Science Fair, Fundraising, Picture Day, Science Lab and More!



Support The RES PTO Through Fundraising

SUPPORT RICHLAND ELEMENTARY PTO

Get your kid's labels with
the PR logo on them!



mabel's labels
FUNDRAISING



HOW TO ORDER:

1. Head over to campaigns.mabelslabels.com
2. Search for our organization
**Richland Elementary School PTO
(Gibsonia)**
3. Click Shop Now, and **Logo Label Pack**
will be one of the first options.



Go to campaigns.mabelslabels.com
and choose our organization from the list!

All label designs benefit our school!



SUPPORT
THE
RES PTO

PR WATER
BOTTLE
\$3

PR SLIDES
\$10
(SIZES 10/11 & 12/13
REMAINING)



Support The RES PTO Through All Year Fundraising



RES has 2 staff lounges and a mailroom. Help us keep them stocked all year with our Amazon wish list.



Chick-fil-A Receipts

Turn in receipts you collect from the Wexford and Cranberry Chick-fil-A locations, and the PTO will be able to collect 20% of the totals to earn money towards school events. Place receipts in an envelope marked "Chick-fil-A PTO" and send to school.



RICHLAND ELEMENTARY

Parent Teacher Organization (PTO)

Let's stay in touch!



richlandramspto@gmail.com



Richland Elementary PTO



www.pinerichland.org/Page/5555

2024-2025 PTO Executive Board

Members:

President

Lauren Oeler

Vice President, Enrichment

Kristen Schaffert

Vice President, Membership

Apryl Pratt

Treasurer

Kristen Trombetta

Secretary

Sarah Hoover

Email the board: richlandramspto@gmail.com

Our Mission

The Richland Elementary School's Parent Teacher Organization (PTO) promotes the well-being and enrichment of our students through activities that stimulate the physical, emotional and cultural growth of our children. The PTO's projects benefit students by developing united efforts between teachers and parents and fostering a closer relationship between home and school life.

The Richland Elementary PTO Welcomes YOU!

We invite you to become involved at your child's school through the many opportunities provided by the Richland Elementary PTO. Check the links in the menu for Executive Board Contact information as well as committee information and PTO business.

Volunteer Policy - click [HERE](#)

Independent Volunteers

Direct contact with kids.

Need Clearances!!

Assistive Volunteers

No unsupervised contact with kids

Training Sessions and information can be found on the district website.

****Volunteers for cafeteria or other purpose outside of the classrooms are not permitted to go to classrooms during the school day.***



Stretch Break:

Your goal is to meet someone new and possibly even exchange numbers to setup a summer playdate! Connecting with each other is a goal of KinderCamp!

When the video concludes, please return to your seats!



3

What are the kids up to
at kindercamp and what
will kindergarten look
like?

KinderCamp Learning Stations:

Simon Says - following directions and resiliency

Free Play - sharing, cooperation and communication with peers

Watermelon Cutting Activity - scissor skills

KinderCamp Learning Stations:

Early Numeracy - do they know numbers and 1:1 correspondence

Self Portrait - following directions and speech/articulation

Story Reading - Comprehension and retell check

Goals of KinderCamp:

Begin building relationships

Become familiar with Richland Elementary

Students to meet teachers and staff

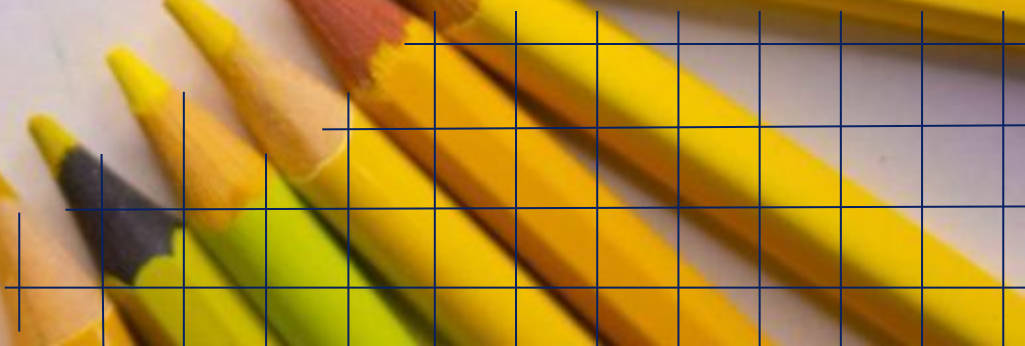
Get a snapshot of students as learners

Provide feedback to families based on the skills that are observed

Help students experience the riding the bus!



School Year Kindergarten Information:



Daily Kindergarten Schedule: AM

		Day 1	Day 2	Day 3	Day 4	Day 5
8:30-9:00	30	Team Collaboration/Meetings				
9:00-9:20	20	Arrival Time for Students				
9:20-9:25	10 (5)	Read Aloud	Read Aloud	Read Aloud	Read Aloud	Read Aloud
9:25-9:55	30	95% & Heggerty	95% & Heggerty	Music - Cycle A	Library	Art - Cycle B
9:55-10:10	10	Science/SS	Science/SS	95% & Heggerty	95% & Heggerty	95% & Heggerty
10:10-10:40	30	RAM	RAM	RAM	RAM	RAM
10:40-11:20	40	Wonders	Wonders	Wonders	Wonders	Wonders
11:20-11:50	30	Math	Math	Math	Math	Math
11:50-12:00	10	Dismissal				

Schedule is a sample from the 2023-2024 school year:

Kindergarten: AM

- Bus Transportation to School Only
- Arrival 9:00 am – 9:20 am - side auditorium doors
- Instructional Day Begins 9:20am
- Dismissal 12:00pm - do not arrive before 11:45 - Front Door pick up line (Auditorium)

Daily Schedule

KINDERGARTEN THROUGH THIRD GRADE

9:00-9:15 a.m.	Doors Open - Students Arrive
9:15 a.m.	Warning Bell Rings
9:20 a.m.	Instructional Day Begins
12:00 p.m.	Dismissal Begins for AM Kindergarten
1:05 p.m.	Instructional Day Begins – PM Kindergarten
3:40 p.m.	Instructional Day Ends
3:45 p.m.	Dismissal Begins K-3
3:55-4:10 p.m.	Buses Depart

Kindergarten 2-Hour Delay Schedule

Morning Session: 11:20 a.m. - 1:05 p.m.

Afternoon Session: 2:05 p.m. - 3:50 p.m.

Daily Kindergarten Schedule: PM

		Day 1	Day 2	Day 3	Day 4	Day 5
12:30-1:00	30	Team Collaboration/Meetings				
1:00-1:15	15	Arrival Time for Students				
1:15-1:20	10 (5)	Read Aloud	Read Aloud	Read Aloud	Read Aloud	Read Aloud
1:20-1:50	30	95% & Heggerty	95% & Heggerty	Music - Cycle	Library	Art - Cycle B
1:50-2:00	10	Science/SS	Science/SS	95% & Heggerty	95% & Heggerty	95% & Heggerty
2:00-2:30	30	RAM	RAM	RAM	RAM	RAM
2:30-3:10	40	Wonders	Wonders	Wonders	Wonders	Wonders
3:10-3:40	30	Math	Math	Math	Math	Math
3:40-3:45	10	Dismissal				

Schedule is a sample from the 2023-2024 school year:

Kindergarten: PM

- Bus Transportation Home Only
- Arrival 12:55-1:05pm
- Front Door Drop Off (Auditorium doors)
- Instructional Day Begins 1:05pm
- Dismissal 3:45pm (car & bus riders)

Daily Schedule

KINDERGARTEN THROUGH THIRD GRADE

9:00-9:15 a.m.	Doors Open - Students Arrive
9:15 a.m.	Warning Bell Rings
9:20 a.m.	Instructional Day Begins
12:00 p.m.	Dismissal Begins for AM Kindergarten
1:05 p.m.	Instructional Day Begins – PM Kindergarten
3:40 p.m.	Instructional Day Ends
3:45 p.m.	Dismissal Begins K-3
3:55-4:10 p.m.	Buses Depart

Kindergarten 2-Hour Delay Schedule

Morning Session: 11:20 a.m. - 1:05 p.m.

Afternoon Session: 2:05 p.m. - 3:50 p.m.

Kindergarten: PM

Critical - Orange band must be on backpack all year for PM students only!

- Helps driver recognize student is in Kindergarten and ***must*** be greeted by an adult at bus stop in the PM
- Keep this on backpack in a visible area
- Request new band if needed through Mrs. Hoffman in the main office

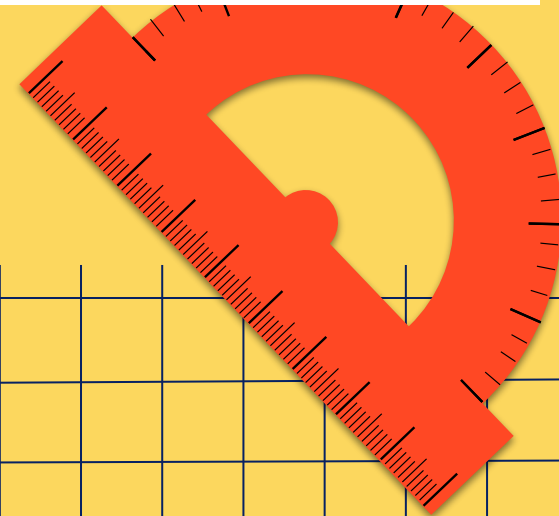


John Stoughton
Director of Transportation
jstoughton@pinerichland.org

Kindergarten: PM

Dismissal:

- ***Inform your child's teacher how your child will typically get home - bus (pm only) or car rider***
- ***If there is a change on a particular day, please send a note in your child's folder AND email the teacher AND secretaries***
- ***This is only needed if it is a change in your child's regular transportation***



Delays, Cancellations, or Learning from Home

Kindergarten 2-Hour Delay Schedule:

AM session - 11:15-1:00

PM session - 2:05-3:45

Information:

PR-TV

www.pinerichland.org

Local TV

Pine-Richland Twitter or Facebook



Erin Hasinger
Director of Communications
ehasinger@pinerichland.org

▪ Safety Procedures

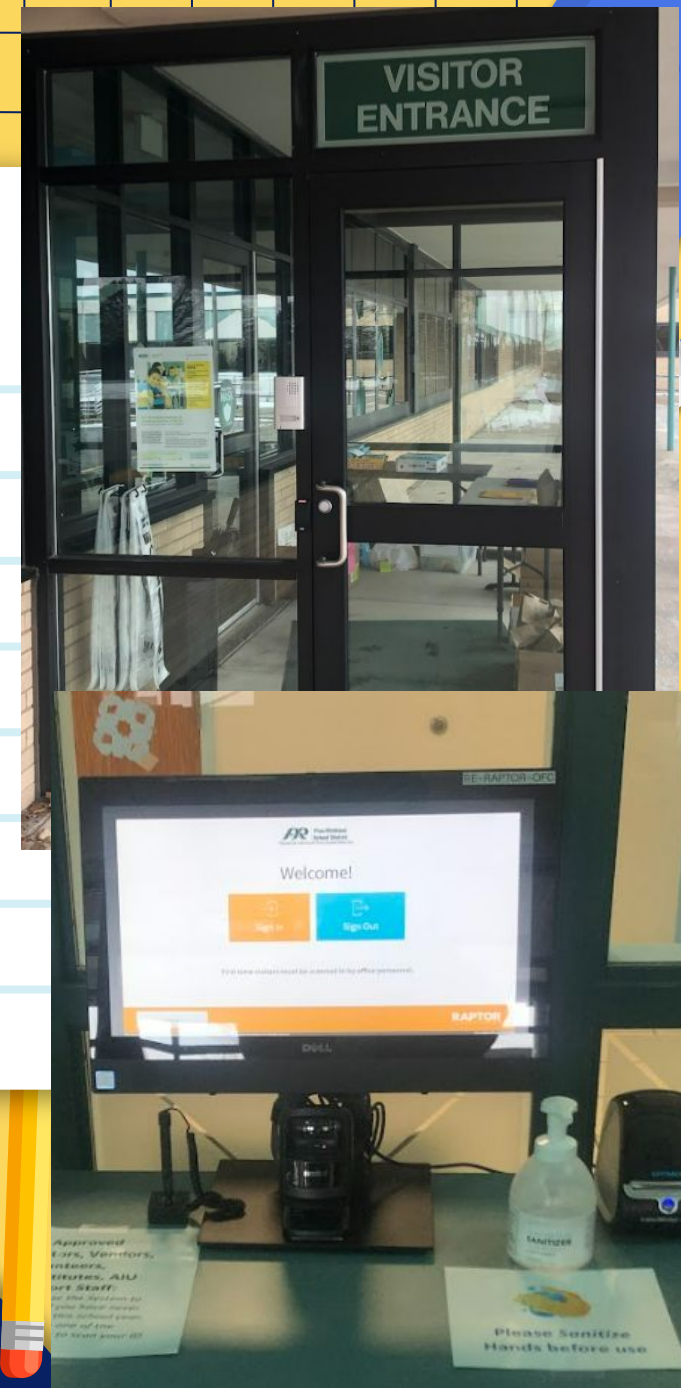
- ❑ Building locked
- ❑ Ring bell to enter
- ❑ Must sign-in with license and have a visitor's badge (ID)
- ❑ Office staff will get your child

▪ Early Dismissal

- ❑ Send a written note or email or upload into Sapphire
- ❑ Ring bell to speak to front office secretaries - Office staff will get your child

▪ Odds and Ends

- ❑ Backpacks labeled
- ❑ Written excuse when absent - upload to Sapphire
- ❑ Written note for any change in dismissal i.e. riding home with a friend via car or bus.



Curriculum and Resources

Kindergarten



Literacy:

Phonemic Awareness: Phonemic awareness is the ability to understand that spoken words are made up of individual sounds called phonemes, and it's one of the best early predictors for reading success. (Heggerty - click [HERE](#))

Kindergarten



Literacy:

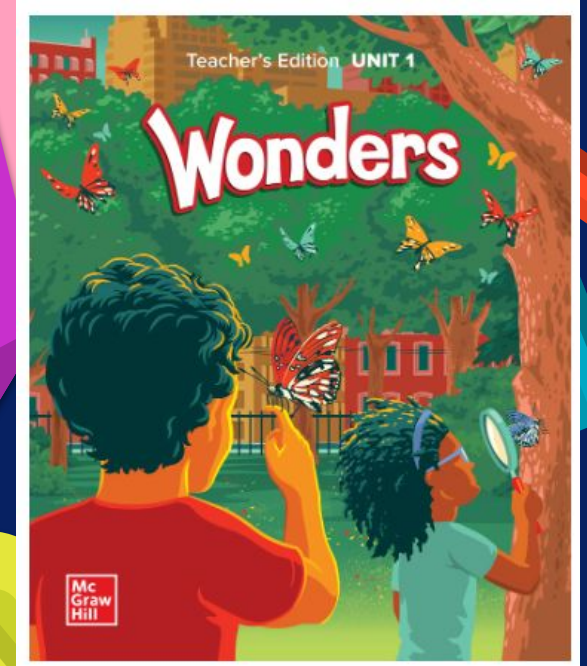
Phonics:

- The relationship between the letters (graphemes) of written language and the individual sounds (phonemes) of spoken language. This is called the alphabetic principle.
- Using the letter-sound pairings to sound out printed words.
- The understanding that there are systematic and predictable relationships between written letters and spoken sounds.
- Click [HERE](#) to read more about our resource, 95% Group



Literacy:

- **The English Language Arts program encompasses the areas of reading, writing, language, spelling, and speaking. Students are involved in activities beginning in Kindergarten that are designed to help them explore their interests, share their experiences, and develop a lifelong love of reading.**

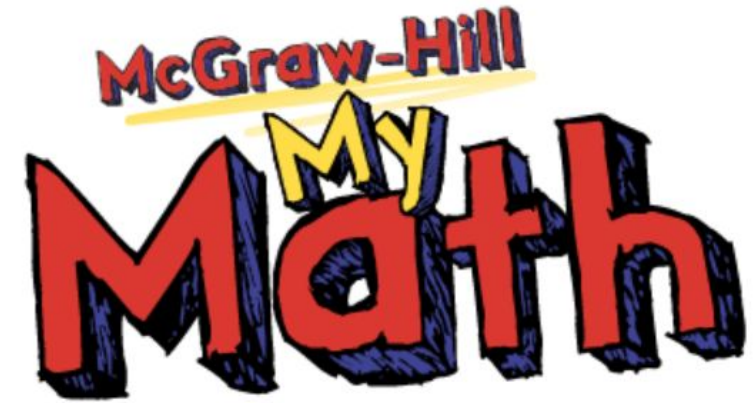


Math:

Made for Student Success


Built around the Standards for Mathematical Practices, McGraw-Hill My Math engages students with the focus, coherence and rigor required by state standards. The program has an intuitive lesson format and digital tools to develop customized content. Digital accessibility with any device help you to plan, sequence, and deliver instruction that works best for your students anytime, anywhere.

Kindergarten



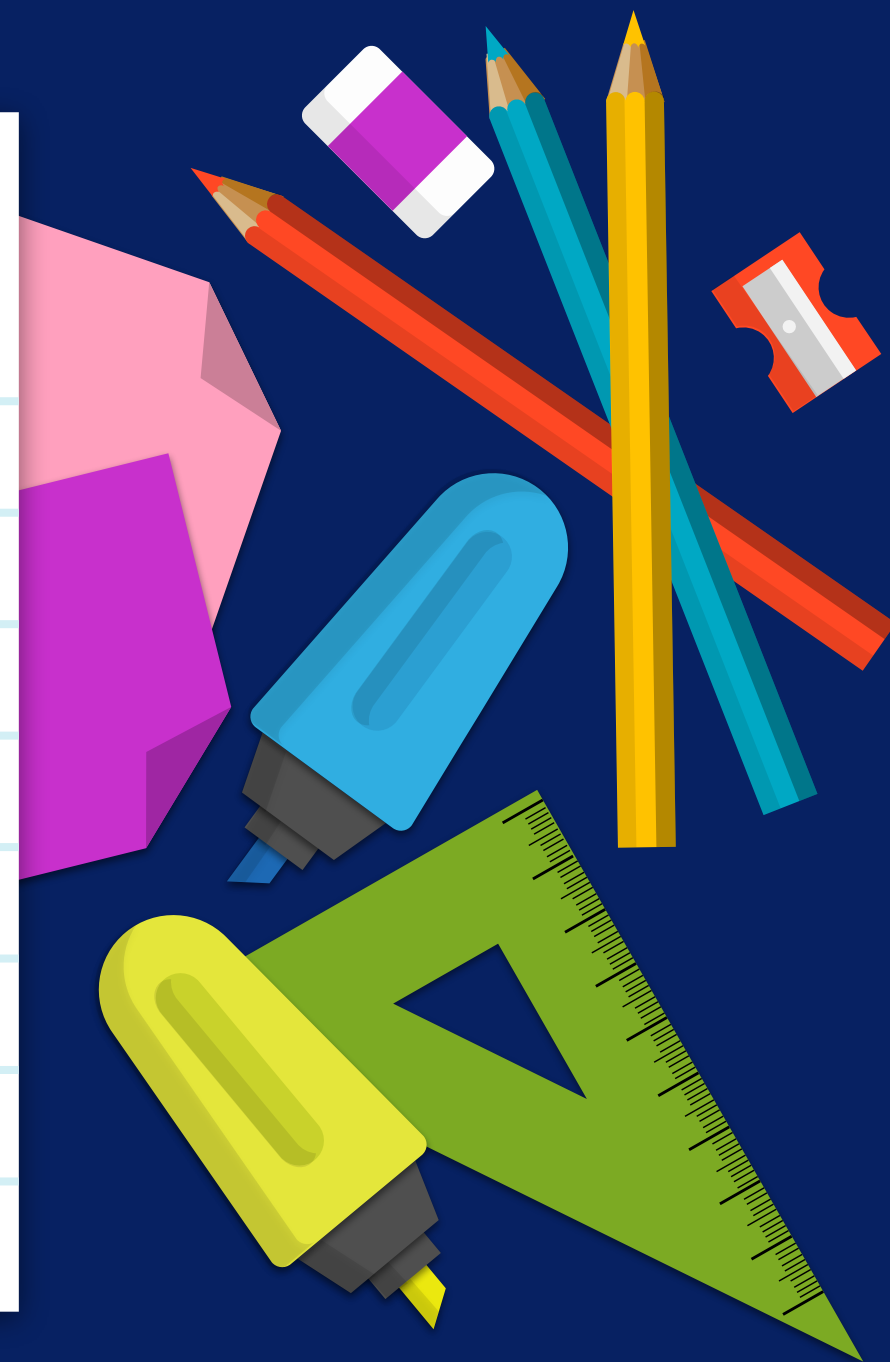
Units of Study:

- Unit 1: Counting and Cardinality
- Unit 2: Operations and Algebraic Thinking
- Unit 3: Numbers and Operations in Base 10
- Unit 4: Geometry
- Unit 5: Measurement and Data
- Unit 6: Calendar Math



Special Area Classes:
Library – 30 minutes/5
day cycle
Art or Music– 30
minutes/5 day cycle

Kindergarten





RAM Time:

“Reading and Math”

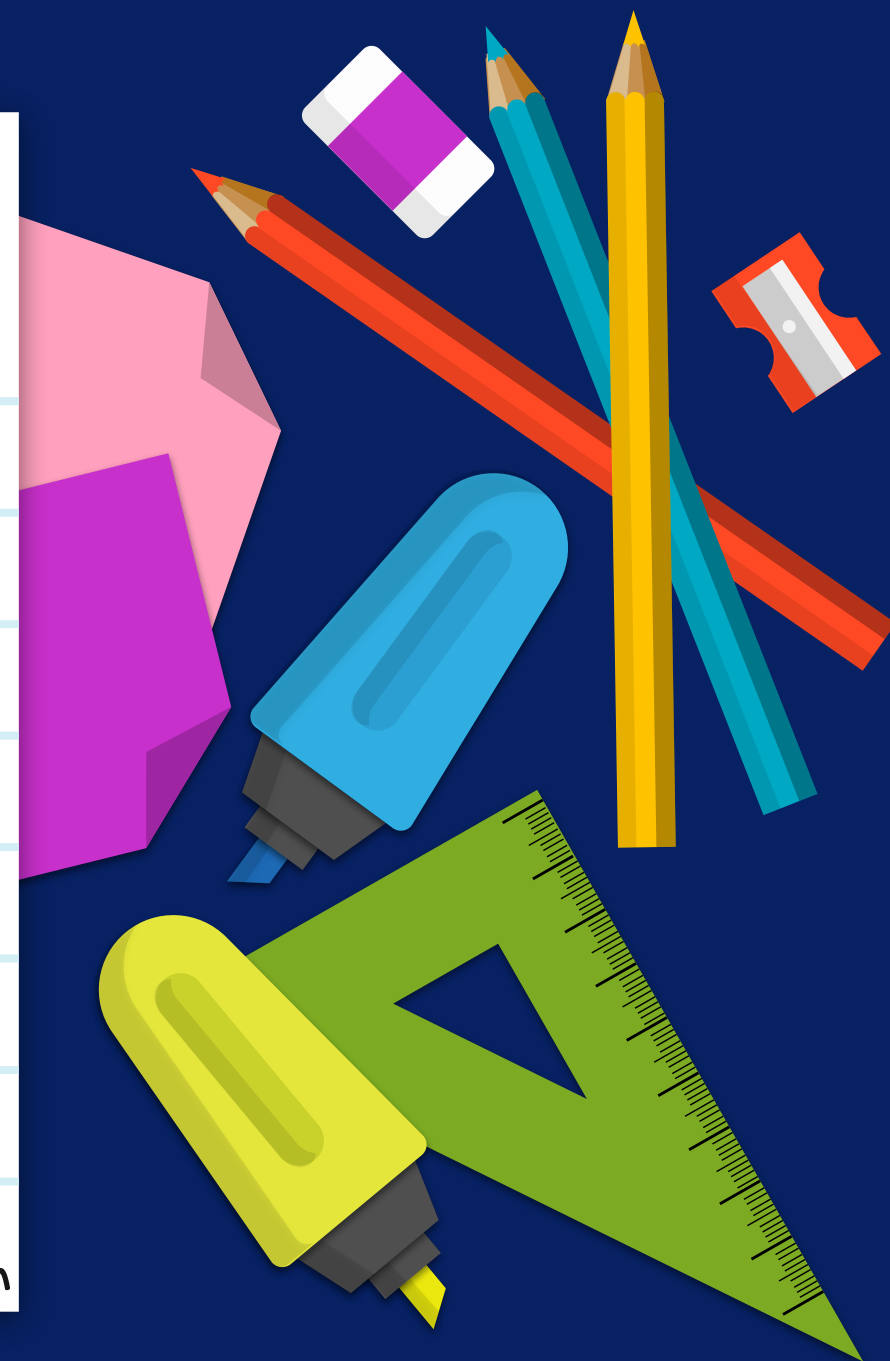
**Common intervention and
enrichment time**

20-30 minutes for AM and PM K

No core instruction missed

**Supplemental to core
instruction from curriculum**

Kindergarten






Assessments:

- **Informal and Formal Assessments**
 - Throughout the year
 - Progress Reports quarterly
- **STAR 360 Early Literacy**
 - Letter Identification
 - Letters as Sound Symbols
 - Initial Medial & Ending Sounds
 - Phonemic Awareness
 - Alphabetic Principle

Kindergarten





RAMS Way
Building a positive
school culture with
consistent
expectations for all!



Kindergarten

Behavioral Matrix

Click [HERE](#) to read

more about PBIS:

Lessons to learn

Assemblies to celebrate

School store to spend tickets


Shoutouts to acknowledge

Pine-Richland School District
Focused on Learning for Every Student Every Day

The RAMS Way

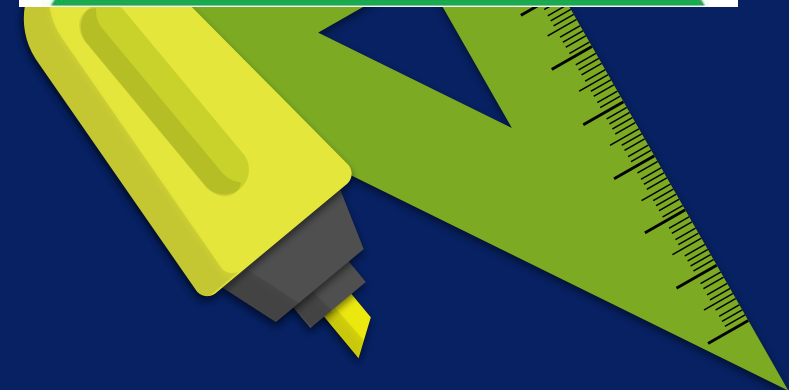
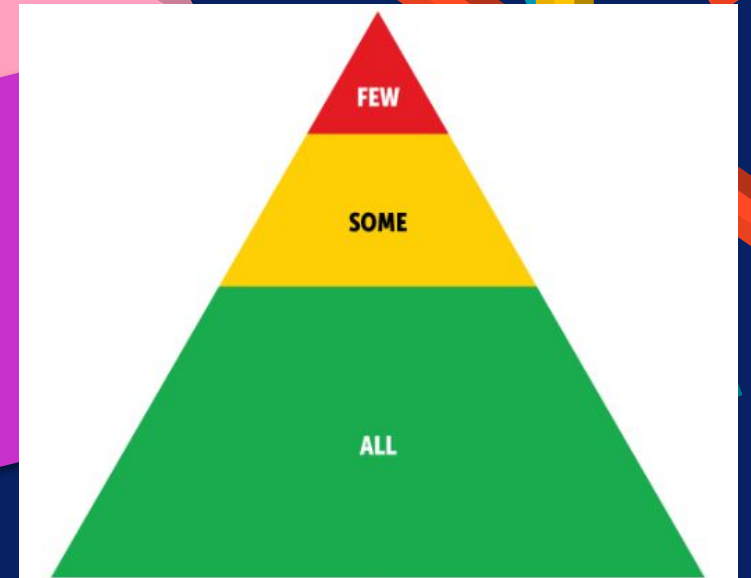


Kindergarten



**MTSS - Multi-tiered System
of Supports:**
systematic, collaborative team
approach to ensuring all students
are accessing learning and growth
opportunities

Kindergarten





4
Building Tour and
Light Refreshments
in the Cafeteria

Countdown to Kindergarten

School Preparations:

- KinderCamp
- A.M/P.M Placement Notification (late June)
- Student Placement (Mid August Notification)
- Find Your Classroom Day - August 14th 9-3pm - visit the building and find the students' classroom together!
- RE - Kindergarten Parent Meet the Teacher Night
Aug. 20, 2024- 6:00 PM - 7:00 PM
- First Day of School August 22, 2024

How to help with the transition:

- *Communication/Connect with school*
- *Website, Friday Flash*
- *Support feelings*
- *Realistic Expectations*
- *Make connections with peers*
- *Routines (Get lots of sleep!)*
- *Memory Box, New Traditions, Map of Neighborhood, Safety Plan*

What if my child is nervous?

- *Talking with your child is the best way to combat nervousness before the first day of school!*
- *Make sure your child knows that it's totally normal to feel nervous*
- *Encourage your child to be open and honest about his/her feelings about coming to school*
- *Reassure your child that school is new for their classmates too*
- *There will be a lot of new people and new things, so there will be a lot of learning happening for everyone*
- *Read books over the summer about school and kindergarten*
- *If there is any way that we can support your child, please call or email the school office. We are here for you!*

Books to read and things to do over the summer:

- <https://www.romper.com/p/15-books-to-read-the-night-before-kindergarten-18207802>
- <https://www.readbrightly.com/9-books-to-help-get-your-kids-ready-for-pre-school-or-kindergarten/>
- <https://bookriot.com/best-kindergarten-read-aloud-books/>

Practice:

- **Identifying letters and their sounds**
- **Identifying numbers and corresponding them with amounts (counting items)**
- **Cutting with scissors**
- **Name writing**
- **Read!**

Keep Learning:

Additional Resources:

PRSD Strategic Plan 2023-2027
Home Page At Your Service Link
OUR END of Year Video
Stepping Stones - Key partner that provides programming before and after school as well as the half day opposite your child's kindergarten half day. We are separate entities, but they do operate in our building for convenience to families. Registration for PRSD opened 6/3 and is first come first served.

****All Links Originated from the "AT YOUR SERVICE" Directory of the district website where more information is linked!**

Sign Up for Communications and HERE Community Web Portal - for access to grades and records in Sapphire

Policies and Regulations:

Academic Calendar - 24-25

Attendance - 10 parent excused days per school year, includes educational trips (approved vacations) and sick days without a medical note

Discipline Code

Food Service

Student Handbooks

Volunteers

RAMS Way



Thank you!

Do you have any questions?

Jenna L. Rucker

jerucker@pinerichland.org

Virginia (Gina) Hoffman

vhoffman@pinerichland.org

Credits.

Presentation Template: Slidesmania

Images: Unsplash

Fonts used in this presentation: Gochi Hand and
Baloo 2



Free themes and templates for Google Slides or PowerPoint

NOT to be sold as is or modified!

Read [FAQ](#) on slidesmania.com

Do not remove the slidesmania.com text on the sides.

Sharing is caring!

