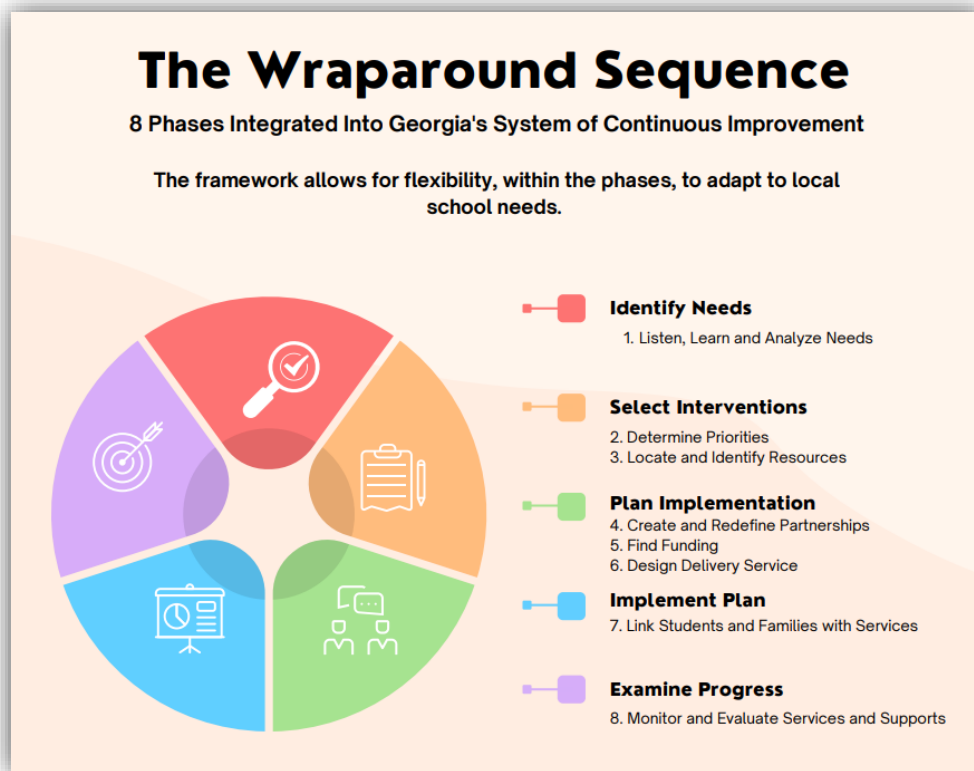


WRAPAROUND

The Wraparound Services Initiative is a response to the growing need across the state to address non-academic barriers to student learning. By developing and coordinating services and supports through dedicated programs, services, or centers, school leaders and their team members will learn the key steps of the wraparound sequence.

Through coaching, school-based staff develop sustainable wraparound practices, inclusive of mental health supports, while ensuring school improvement teams align and embed these services into school plans. The coaching process incorporates the eight phases of the wraparound sequence, seamlessly integrated into Georgia's System of Continuous Improvement. This approach ensures a holistic support system for students, promoting their overall wellbeing and academic success.



Coaching on the Wraparound Sequence steps will include the following:

- Systems and structures (the “what”) that must be in place for sustained improvement in student outcomes,
- Problem-solving model (the “how”) to provide a clear process for identifying improvement needs,
- Planning for improvement,
- Implementing,
- Monitoring, and
- Evaluating the improvement efforts.