

RADON INSPECTION

**The Rogue River High School
1898 East Evans Creek Road
Rogue River, Oregon
97537**

Prepared For:

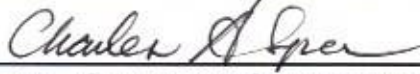
**Scott Hanson, Facility Manager
1898 East Evans Creek Road
Rogue River, Oregon 97537**

EIS Job No. 2020044. Rogue River High School Radon Report

Prepared By:

**Charles A. Spear
Environmental Professional
Environmental Inspection Services
11981 Fargo Road
Aurora, Oregon 97002
Cell # (503) 680-6398**

E MAIL: charles_a_spear@yahoo.com



Charles A. Spear, Environmental Professional

June 15, 2020



EIS
ENVIRONMENTAL INSPECTION SERVICES



TABLE OF CONTENTS

<u>DESCRIPTION</u>	<u>PAGE NO.</u>
1.0 EXECUTIVE SUMMARY.....	1-2
2.0 RADON ENVIRONMENTAL RISK	3
3.0 RADON HEALTH EFFECTS	4
4.0 RADON DESCRIPTION	4
5.0 RADON CHARACTERISTICS	5
6.0 RADON TESTING ACTIVITY	5-7
7.0 RADON TEST RESULT TABLE	8-9
8.0 RADON MEASUREMENT RISK ASSESSMENT	10
9.0 RADON LABORATORY ANALYSIS	11
10.0 QUALITY ASSURANCE / QUALITY CONTROL	12-13
11.0 RECOMMENDATIONS & CONCLUSIONS	14
12.0 PUBLIC AWARENESS.....	15-16
13.0 LIMITATIONS	17

APPENDIX 1.0
RADON ANALYTICAL TEST RESULTS

APPENDIX 2.0
CHAIN'S OF CUSTODY (COC'S)

APPENDIX 3.0
SCHOOL SAMPLING FLOOR PLAN

APPENDIX 4.0
RADON REGULATION

APPENDIX 5.0
CONSULTANT RESUME

1.0 EXECUTIVE SUMMARY

June 15, 2020

EIS JOB No. 2020044. Rogue River High School radon report

Scott Hanson, Facility Manager
Rogue River School District
1898 East Evans Creek Road
Rogue River, Oregon 97537

RE: Short term radon testing of The Rogue River High School
located at 1898 East Evans Creek Road in Rogue River, Oregon
97537

Dear Scott Hanson,

This letter summarizes the finding of a short term (48-72 hour) radon sampling test episode conducted at the subject High school known as the Rogue River High School located at 1898 East Evans Creek Road in Rogue River, Oregon 97537 between Wednesday, June 3, 2020 and Friday, June 5, 2020. The fifty-six (56) radon samplers were received by PRO-LAB on Wednesday, June 10, 2020, 2020, and analyzed by PRO-LAB laboratory on Thursday, June 11, 2020. The radon test results were reported to EIS on Friday, June 12, 2020. The average radon concentration level was 0.34 pCi/L.

The radon sampling episode was conducted by Charles A. Spear, field representative of Environmental Inspection Services (EIS) with no custodial escort through the entire Rogue River High School building. No elevated radon considerations were noted for the High School building based on the short term simultaneous test results of the fifty-six (56) measured detached samplers. The EPA action limit for radon concentration is 4.0 pCi/L. No radon concentrations exceeded 2.3 pCi/L. The one (1) highest radon concentration was 2.3 pCi/L and is listed as follows:

<u>Serial No.</u>	<u>Location</u>	<u>Analytical Test Result</u>
4947000	Spanish	2.3 pCi/L

All radon concentration measurements are below the action limit of 4.0 pCi/L and no radon concentration approached the radon concentration of 3.0 pCi/L.

In the United States radioactivity is measured in Curies. A curie is the amount of radioactivity released from one gram of radium. A picocurie is a millionth of a curie, or a trillionth of a curie. Radon is measured and reported in picocuries per liter of air (pCi/L). The aforementioned one (1) radon sampler concentration was listed as the highest concentration tester and all tester concentrations were all below the EPA radon concentration action limit of 4 pCi/L. EIS does not recommend additional short term radon testing at this school at this time based on these analytical test results.

All radon concentration sampler test results are summarized in Appendix 1.0. The radon test results for the high school building are based on these initial short term simultaneous test results. The average building radon concentration level for this high school is 0.34 pCi/L. The EPA notes there is no safe level of radon. If there are questions concerning the radon testing at the district please initially contact the Rogue River Administrative office at 541-778-2334.



Charles Arthur Spear
Environmental Professional

2.0 RADON ENVIRONMENTAL RISK

The U.S. Environmental Protection Agency (EPA) and other major national and international scientific organizations have concluded that radon is a human carcinogen and poses a serious environmental health problem. The EPA recommends that schools take action to reduce the level of radon concentration if radon concentration levels are 4 pCi/L or higher.

The U.S. Surgeon General has warned about the health risk from the exposure to radon in indoor air. The surgeon general has urged Americans to test their homes because radon is the leading cause of lung cancer for non-smokers in the United States and breathing in radon over prolonged periods can present a significant health risk. The USEPA has estimated that approximately 21,000 lung cancer-related deaths occur annually with an estimated 275 lung cancer deaths annually in Oregon.

The US EPA has states that "Any exposure has some risk of causing lung cancer. The lower the radon risk level in your home, the lower your family's risk of lung cancer." The EPA has noted that depending on your geographic location the radon levels of air you breathe outside the home may be as High as 0.74 pCi./L. The national average of outside radon levels are 0.4 pCi/L and it has been estimated by The National Academy of Sciences that outdoor radon levels cause approximately 800 of the 21,000 radon induced lung cancer deaths in the US each year.

Radon Act 51 passed by Congress set the national outdoor level of radon gas (0.4pCi/L) as the target radon level for indoor radon levels. Unfortunately, two-thirds of all homes exceeded this level. The USEPA was tasked with setting practical guidelines and recommendations for the nation. The USEPA thereby set a practical level of 4pCi/L as an action level for radon.

3.0 RADON HEALTH EFFECTS

Radon is a known human carcinogen. The prolonged exposure to elevated radon concentrations does cause an increased risk of lung cancer. The precise magnitude of radon health risks are uncertain and research continues regarding these health risks. The EPA has estimated that radon may cause nearly 14,000 lung cancer deaths in the United States each year. However,, this number could range from nearly 7,000 to 30,000 deaths per year.

The U.S. Surgeon general has warned that radon is the second-leading cause of lung cancer deaths. The individual risks from radon exposure have been attributed to three factors; the level of radon, the duration of radon exposure, and the individual smoking habits. The risk of death from lung cancer has been determined to be much higher for smokers than non-smokers.

The EPA has noted that the home is to be the most likely significant source of radon exposure. Additionally, the EPA has also noted that the second largest potential contributor to radon exposure is likely to be schools. The EPA has recommended that school buildings be tested for radon. In 1989 and 1990, the EPA conducted the School Protocol Development Study as a nationwide effort to further examine how best to conduct radon measurements in schools.

4.0 RADON DESCRIPTION

Radon is a gas and the radon decay products are referred to as solid particles (progeny). The radon particles may become suspended in the air when they are formed. Some particles "plate-out" (attach) to surfaces as aerosols, dust, and/or smoke particle in air. The inhalation of the particles has attributed to lung tissue damage and may affect DNA.

Radon gas is an extremely toxic, chemically inert, odorless, colorless, and tasteless naturally-occurring radioactive element having the symbol Rn. Radon has the atomic number 86; an atomic weight of 222; a melting point of -71 degrees Celsius; a boiling point of -62 degrees; and 18 radioactive isotopes. It is derived from the radioactive decay of radium and is used in cancer treatment; as a tracer in leak detection; and in radiology.

In the United States radioactivity is measured in Curies. A curie is the amount of radioactivity released from one gram of radium. A picocurie is a millionth of a curie, or a trillionth of a curie. Radon is measured and reported in picocuries per liter of air (pCi/L).

5.0 RADON CHARACTERISTICS

The concentrations of radon in a building are dependent on factors to include the concentration of uranium and radium in the soil; the type of underlying geology; soil permeability; available migration pathways such as subsurface utilities; foundation openings; air temperature and pressure differentials and building ventilation.

Radon may migrate into a study area by either a pressure driven transport or no pressure differentials. The subject high school building was built on concrete foundation and slab on slab foundations. Radon may migrate through foundations by the availability of expansion joints and cracks in the foundation. Radon may also migrate into a building through basements, utility trenches, pipe runs, HVAC systems, and other building ventilation systems. Radon contributions from building materials off-gassing are not often the source of measurable radon.

6.0 RADON TESTING ACTIVITY

The EPA has shown that radon concentration levels may vary from room to room in schools in the same building. It is also known that radon measurements for a particular room are not always precise indicators of radon measurements in adjacent rooms. ORS 332.166-167 has therefore required that radon measurement teams measure radon in schools with initial radon measurements conducted in all frequently occupied rooms in contact with the soil or above a basement crawlspace.

The OHA requires a simultaneous initial test of all frequently occupied rooms to include such rooms as offices, classrooms, conference rooms, resource room, gymnasium, a library, cafeteria, and break rooms. The OHA requires a minimum of one detector per every 2,000 square feet of open floor space or a portion of the room as required. All radon testers were placed away from windows and doors and in closed door conditions. The EPA has also noted that radon levels in upper floors are not likely to exceed the levels of lower rooms. The EPA has determined that testing the ground level floors is sufficient for initial radon concentration determinations.

EPA recommends that initial measurements be performed by the utilization of short term testers placed in the lowest section of the subject buildings and performed under closed door conditions. An initial short term test ensures that school students and workers may be informed quickly if radon measurements reveal elevated radon test levels. If the short term measurement is greater than 4 picocuries per liter (pCi/L) or 0.02 working levels (WL), a followup measurement is recommended. The purpose of the follow up measurement is to determine whether or not radon mitigation is necessary for the measurement area.

All school locations were tested utilizing a short term activated charcoal adsorption test kit supplied by Pro Lab. Duplicates and blanks were placed two feet from the ground and away from windows and doors. The testers were placed according to the school floor plan with duplicates placed adjacent to the room testers in order to duplicate the total building envelope conditions. All testers were placed in closed building conditions and all windows and doors were closed except for normal entrance and exit from the rooms. Normal room ventilation and typical ambient air conditions were maintained throughout the radon testing sequence.

A total of fifty-six (56) short term radon test units were placed throughout the high school building frequently occupied areas to include the offices, classrooms, resource rooms, gymnasiums, cafeteria, and shops. All radon measurements varied between thirty (30) low radon concentration measurements of 0.2 pCi/L to one (1) higher radon concentration measurement of 2.3 pCi/L. All radon measurements were with a low radon measurement varying between concentrations of 0.2 pCi/L and a single low radon concentration of 2.3 pCi/L. All radon concentration sampler test results are summarized in Appendix 1.0.

The radon samplers were opened on Wednesday, June 3, 2020 and capped on Friday, June 5, 2020. The capped radon samplers were packaged; logged on a chain of custody form; and shipped to ProLab Laboratories. Radon test results were reported to EIS on Friday, June 12, 2020. Radon concentration measurements varied between low concentrations of 0.2 pCi/L and a higher radon concentration of 2.3 pCi/L with an average radon concentration of the school of 0.34 pCi/L. No radon concentrations exceeded the EPA action limit of 4 pCi/L and no radon concentrations approached the EPA action limit with radon concentration measurements exceeding 3.0 pCi/L. No additional short term radon re-testing is recommended at the High school at this time.

The EPA recommends that initial radon concentration measurements be short-term tests placed in the lowest frequently occupied areas of the school buildings and placed under closed door conditions. Open common rooms and multi-purpose rooms are often continuously open for student ingress and egress purposes and subsequently radon tests in the rooms are conducted under normal occupant conditions. The short term testing provides the school a snap shot of current radon concentration conditions throughout the school and provides data for the purposes of informing the occupants of radon concentrations at the time of the evaluation.

Radon concentrations greater than 4 pCi/L should be followed by a short term tester retest. The EPA recommends remedial action if the average of the initial and second short term test results are equal or greater than 4 pCi/L. Measurements were not conducted in bathrooms, kitchens, laundry rooms, or bathrooms. The effects of cooking and exhaust fan fluctuations do effect radon measurements.

Radon measurements are also not conducted in bathrooms because high humidity may affect the sensitivity of short term radon detectors and because exhaust fan operations may temporarily alter radon or decay product concentration levels. Radon measurements were also not conducted in stairwells and hallways due to the continuous variances in ventilation, air movements, and hallway barometric pressures.

7.0 RADON TEST RESULTS SUMMARY TABLE

The radon sampling episode was conducted by Charles A. Spear, field representative of Environmental Inspection Services (EIS) with custodian escort through the entire High school building. A total of fifty-six (56) short term radon test units were placed throughout the High school building frequently occupied areas to include the weight room, music room, and library.

All radon measurements varied between thirty (30) low radon concentration measurements of 0.2 pCi/L to one (1) higher radon concentration measurement of 2.3 pCi/L. The highest one (1) radon measurement was higher at a concentration of 2.3 pCi/L. All radon concentration sampler test results are summarized in Appendix 1.0.

No elevated radon considerations were noted for the high school building based on the short term simultaneous test results of the fifty-six (56) measured detached samplers. The EPA action limit for radon concentration is 4.0 pCi/L. No radon concentrations exceeded 2.3 pCi/L. The single highest radon concentration was 2.3 pCi/L.

<u>Serial No.</u>	<u>Location</u>	<u>Analytical Test Result</u>
4947000	Spanis class	2.3 pCi/L

All radon concentration measurements are below the action limit of 4.0 pCi/L.

In the united States radioactivity is measured in Curies. A curie is the amount of radioactivity released from one gram of radium. A picocurie is a millionth of million, or a trillionth of a curie. Radon is measured and reported in picocuries per liters of air (pCi/L). All radon sampler concentrations were listed below the EPA radon concentration action limit of 4 pCi/L. EIS does not recommend additional short term radon testing at this school based on these analytical test results.

The following radon concentration table summarizes all the analytical test results;

<u>radon concentration measurement</u>	<u>Tester No.s</u>
0.2 pCi/L	30
0.3 pCi/L	11
0.4 pCi/L	5
0.5 pCi/L	4
0.6 pCi/L	2
0.7 pCi/L	1
0.8 pCi/L	2
2.3 pCi/L	1

Total 56

At or exceeding 4.0 pCi/L - None

Approaching 4.0 pCi/L (between 3.0 pCi/L and 3.9 pCi/L) - None

Radon concentration levels have been noted to vary slightly from room to room. All frequently occupied rooms in contact with the ground were tested.

This radon sampling episode noted the following;

Total number of measured testers	- fifty-six (56)
Elevated readings (at or greater than 4.0 pCi/l	- none
Moderately high readings (between 3.0 pCi/L and 3.9 pCi/L	- none
Low readings (at or less than 1.0 pCi/L)	- fifty-five (55)
Average reading	- 0.34 pCi/L

8.0 RADON MEASUREMENT RISK ASSESSMENT

No elevated radon considerations above the EPA Action limit of 4 pCi/L were noted for the high school building based on the short term simultaneous test results of the fifty-six (56) measured detached samplers.

The subject school improvement is referred to as the Rogue River high school Building located at 1898 East Evans Creek Road in Rogue River, Oregon, 97537. The fifty-six (56) radon samplers for samplers placed in the high school were received by PRO-LAB on Wednesday, June 10, 2020 and analyzed by PRO-LAB laboratory on Thursday, June 11, 2020. The radon test results were reported to EIS on Friday, June 12, 2020. The radon sampling episode was conducted by Charles A. Spear, field representative of Environmental Inspection Services (EIS) with no custodian escort through the entire high school building.

The U.S surgeon general has warned about the health risk from the exposure to radon in indoor air. The surgeon general has urged Americans to test their homes because radon is the leading cause of lung cancer for non-smokers in the United States and breathing in radon over prolonged periods can present a significant health risk. The USEPA has estimated that approximately 21,000 lung cancer-related deaths occur annually with an estimated 275 lung cancer deaths annually in Oregon.

9.0 RADON LABORATORY ANALYSIS

The radon in test samplers was measured at the Pro-Lab Laboratory located at 1675 North Commerce Parkway in Weston, Florida using the liquid scintillation Method (EPA 402-R-92-004). The selected radon sampler devices utilized at the high school building are described as passive activated charcoal adsorption devices (AC).

The short term testers utilize activated carbon to absorb the radon gas in the air. The test unit has activated carbon with a perforation screen to filter out radon decay products. The absorber is resealed by EIS and shipped to Pro-Lab for processing and evaluation. The selected passive radon tester devices do not uniformly adsorb radon during the testing episode and are not described as integrating devices.

The total of fifty-six (56) radon test units supplied by a certified laboratory known as Pro-Lab were utilized at the high school building. The testers were placed within the basement functional frequently occupied high school building areas such as the offices, classrooms, cafeteria, gymnasiums, shops, and resource rooms between Wednesday, June 3, 2020 and Friday, June 5, 2020. The total of fifty-six (56) short term samplers were capped and submitted to Pro-lab laboratories for radon analysis and analyzed by the Pro-Lab laboratories on Thursday, June 11, 2020. Radon test results were reported to EIS on Friday, June 12, 2020. No elevated radon concentrations were detected in all the samplers.

No elevated radon considerations were noted for the high School building based on the short term simultaneous test results of the fifty-six (56) measured detached samplers. The EPA action limit for radon concentration is 4.0 pCi/L. No radon concentrations exceeded 2.3 pCi/L. The single highest radon concentration was 2.3 pCi/L and is listed as follows:

<u>Serial No.</u>	<u>Location</u>	<u>Analytical Test Result</u>
4947000	Spanish class	2.3 pCi/L

10.0 QUALITY ASSURANCE / QUALITY CONTROL

Radon and all working measurements often do not produce identical test results. There are also variances between co-located measurements such as duplicate samplers. It is therefore essential to place and document duplicates in order to monitor measurement variability and precision. The primary objective of simultaneous or duplicate measurements is to assess the precision error of the measurement method and to examine variances in duplicate samplers. This precision error is the "random" component of error as opposed to calibration error which is considered systematic. The variance between duplicate test results may be caused by the random nature of counting radioactive decay; slight differences in the adsorptive material of the samplers; or handling differences.

Quality Assurance measurements were conducted during the initial testing episode. Minimum acceptable standards of precision and accuracy were maintained during the entire course of the radon testing period. The Quality Assurance protocol included the inclusion of side by side detectors (duplicates) and unexposed control detectors (Blanks).

BLANKS - The "blanks" are defined as tester measurements by analyzing unexposed (closed) radon detectors that accompany exposed detectors to the field. The school district may utilize blanks in order to assess any change in analysis caused by anything outside the immediate room conditions. Background levels may be due to leakage of radon into the tester, detector response to gamma radiation or other causes.

DUPLICATE - The duplicate samplers are placed in order to provide a check on the quality of the measurement results. The duplicate test results provide data for the purpose of testing the relative precision of the sampler tests. Large precision errors may be caused by detector manufacture, and/or improper data transcription or handling by suppliers, laboratories, or technicians performing the placements. The duplicate samplers are "side by side" measurements at least ten percent of the total measurement locations. The sampler locations are distributed systematically throughout the entire population of samplers.

The duplicates were placed as pairs of detectors deployed in the same location side by side during the identical testing periods. Duplicate placements were at least ten percent of the measurement locations. The duplicates were placed, shipped, and manifested with chains of custody to Pro-lab for analysis in the same manner as the other devices so that processing at the laboratory could not distinguish the testers. Duplicate and blank samplers are listed as follows;

<u>Sample serial No.</u>	<u>Sample location</u>	<u>Sample test result</u>
4958244	Commons-dup	0.2 pCi/L
4949232	Resource-dup	0.4 pCi/L
4955356	Gym-dup	0.2 pCi/L
4947478	Gym-blank	0.2 pCi/L
4958402	Cafe-dup	0.2 pCi/L
4958394	Drafting-dup	0.6 pCi/L
4947259	Drafting-blank	0.2 pCi/L
4947530	Mart-dup	0.2 pCi/L

SPIKES- Spike samples are described as detectors that have been exposed to known radon concentrations in a radon test calibration chamber. These "spiked" samples are labeled and submitted to the laboratory in the same manner as ordinary samples to preclude special processing. The results of the spiked samples analysis are used to monitor the overall accuracy of the entire measurement system.

The spike samples are handled and spiked by the PRO-LAB laboratory and results remain as internal tests and confidential per regulation. Spike samples are routinely conducted per the laboratory proficiency requirements. An independent company, Bowser Morner located at 4514 Taylorsville Road (phone No. 937-236-8805) conducts routine controls for proLab.

Bowser Morner participated in spike testing using liquid scintillation charcoal devices (NRPP device Code # 7084). None of the values of absolute individual Relative Error of the reported measurements was greater than 25%; therefore, the lab passed the performance test. The letter was signed by Rebecca J. Turek Manager of the Radon Reference laboratory of Bowser-Morner, Inc. A copy of the results of the performance test are attached as Appendix 1.0.

11.0 RECOMMENDATIONS & CONCLUSIONS


Initial radon measurements were all below the EPA action limit of 4 pCi/L and immediate followup radon measurements are not required at this time. There is a relatively low probability that radon mitigation is warranted with these favorable test results as cited in EPA document EPA 400-R-92-011; U.S. EPA 1992g. (Building alterations, structural foundation changes and/or other surface or sub-slab disturbances may effect radon concentrations).

The total of fifty-six (56) radon test units supplied by a certified laboratory known as Pro-Lab were utilized at the high school building. The testers were placed within functional frequently occupied high school building areas such as the offices, classrooms, gymnasiums, cafeteria, common rooms, and shops Wednesday, June 3, 2020 and Friday, June 5, 2020. The total of fifty-six (56) short term samplers were capped and submitted to Pro-lab laboratories for radon analysis and analyzed by the Pro-Lab laboratories on Thursday, June 11, 2020. Radon test results were reported to EIS on Friday, June 12, 2020. No elevated radon concentrations were detected in all the samplers.

No elevated radon considerations were noted for the high school building based on the short term simultaneous test results of the fifty-six (56) measured detached samplers. The EPA action limit for radon concentration is 4.0 pCi/L. No radon concentrations exceeded 2.3 pCi/L. The single highest radon concentration was 2.3 pCi/L.

All radon concentration sampler test results are summarized in Appendix 1.0. The radon test results for the Rogue River high school building are based on these initial short term simultaneous test results. In the opinion of EIS, no additional radon testing is recommended at the Rogue River High school at this time based on this data. EIS does not recommend additional short term radon testing at this school at this time based on these analytical test results. If there are questions concerning the radon testing at the district please initially contact the Rogue River Administrative office at 541-778-2334.

Respectfully,



Charles A. Spear
Environmental Professional

12.0 PUBLIC AWARENESS

ORS 332.166-167 requires that school districts make all test results available: to the Rogue River High school board; the Oregon Health Authority with a post to the website and to parents, guardians, students, school employees, school volunteers, administrators, and community representatives at the school or district school or website.

The EPA,OHA Oregon Radon Awareness Program and numerous non-governmental groups recommend that the school district take action to reduce the radon level in those rooms where the average of the initial and follow-up short-term test kit results or the results of the long-term test kit used in the followup is 4.0 pCi/L or higher.

Although not required of school districts under ORS 332.166-167 , it is recommended that school administration direct appropriate staff to adjust the building's HVAC system and then re-test if elevated radon concentration measurements are submitted for a target school. If the HVAC adjustment doesn't reduce the radon concentration measurement levels below 4 pCi/l then radon mitigation performed by a radon mitigation professional is recommended.

The percentage of health evaluations at the National Institute for Occupational Safety and Health at the Centers for Disease Control and Prevention (CDC) conducted related to indoor air quality has increased from 0.5 percent of all evaluations in 1978 to 52 percent of all evaluations since 1990. Evaluations related to air quality have increased from one of every 200 evaluations to now one of every two evaluations.

12.1 - Radon related questions and concerns should be forwarded to your state radon school. The following web sites, hotlines, and publications are submitted for reference:

12.2 - world wide web sites:

<http://www.epa.gov/radon> - EPA's primary radon web site

<http://www.epa.gov/iaq/whereyoulive.html>. - information for state web sites

<http://www.epa.gov/iaq/radon/pubs/index.html> - Full text versions of the most popular radon publications

<http://www.epa.gov/iaq> - EPA air quality risk documents

<http://www.epa.gov/safewater/radon.html>

12.3 - Toll free radon information hotlines :

1-800-SOS-RADON (767-7236) - Radon test kit services

1-800-55RADON (557-2366) - Radon questions & answers

1-800-644-6999 - Radon reduction information for homes

1-866-528-3187 - Linea Directa de Informacion sobre Radon en Espanol.

1-800-426-4791 - Safe Drinking Water Hotline

12.4 - Printed documents:

- Home Buyers and Sellers Guide to Radon
(EPA 402/K-09/002, January 2009)

-State radon schools;

see <http://www.epa.gov/iaq/whereyoulive.html>

- National Service center for Environmental Publications (NSCEP) at 1-800-490-9198, <http://www.epa.gov/nscep/> or via email at nscep@bps-lmit.com

13.0 LIMITATIONS

This report was prepared in accordance with generally accepted ASTM standards of environmental practice at the time this investigation was performed. Evaluations of the conditions at the site for the purpose of this investigation are made from a limited number of observation and sample points and may be subjective in some cases. The client is solely responsible for providing any notices or disclosures to concerned public agencies or to the public.

Environmental Inspection Services has prepared this report based on information collected from available analytical test results. The scope of this investigation is limited and did include a limited number of radon testers and no subsurface or sub-slab radon screening of soil and groundwater. No radon mitigation or long term radon testing was performed on the subject property.

This report is not a substitution for a formal radon mitigation and/or radon mitigation effort. The findings and conclusions are not to be regarded as scientific certainties. Findings are based on professional judgement concerning independent laboratory data significance. This report is an expression of professional opinion and is not a warranty expressed or implied.

APPENDIX 1.0
RADON ANALYTICAL TEST RESULTS

ENVIROMENTAL INSPECTION SERVICES

11981 FARGO RD NE
AURORA, OR 97002
503.680.6398

charles_a_spear@yahoo.com

ROGUE RIVER HIGH SCHOOL

1898 EAST EVANS CREEK ROAD. ROGUE RIVER, OR 97537

Vial #	Location	Start Date	Start Time	End Date	End Time	LEVEL
4958244	COMMONS-DUP	6/3/2020	10:21 AM	6/5/2020	11:15 AM	0.2
4947110	OFFICE	6/3/2020	10:22 AM	6/5/2020	11:15 AM	0.2
4947491	MAIN OFFICE	6/3/2020	10:22 AM	6/5/2020	11:15 AM	0.2
4947516	OFFICE II	6/3/2020	10:23 AM	6/5/2020	11:15 AM	0.2
4947219	AD OFFICE	6/3/2020	10:23 AM	6/5/2020	11:20 AM	0.2
4947236	STAFF	6/3/2020	10:25 AM	6/5/2020	11:25 AM	0.3
4947026	FAC WORK	6/3/2020	10:25 AM	6/5/2020	11:15 AM	0.3
4947058	MATH II	6/3/2020	10:27 AM	6/5/2020	11:30 AM	0.2
4949337	HEALTH	6/3/2020	10:30 AM	6/5/2020	11:30 AM	0.2
4947010	MATH 12	6/3/2020	10:35 AM	6/5/2020	11:30 AM	0.2
4918343	ENG ANNUAL	6/3/2020	10:40 AM	6/5/2020	11:25 AM	0.3
4955698	ENGLISH	6/3/2020	10:40 AM	6/5/2020	11:25 AM	0.2
4947229	ENGLISH 13	6/3/2020	10:41 AM	6/5/2020	11:25 AM	0.2
4949280	GIRLS AD	6/3/2020	10:41 AM	6/5/2020	11:20 AM	0.3
4947126	HISTORY	6/3/2020	10:43 AM	6/5/2020	11:30 AM	0.2
4947343	SOCIAL STUDY	6/3/2020	10:43 AM	6/5/2020	11:33 AM	0.2
4947344	RESOURCE	6/3/2020	10:44 AM	6/5/2020	11:30 AM	0.4
4947468	RESOURCE	6/3/2020	10:44 AM	6/5/2020	11:30 AM	0.4
4947061	RESOURCE	6/3/2020	10:44 AM	6/5/2020	11:30 AM	0.4
4949232	RESOURCE-DUP	6/3/2020	10:44 AM	6/5/2020	11:30 AM	0.4
4947007	LANGUAGE	6/3/2020	10:45 AM	6/5/2020	11:30 AM	0.3
4947000	SPANISH	6/3/2020	10:45 AM	6/5/2020	11:30 AM	2.3
4918276	ECON	6/3/2020	10:50 AM	6/5/2020	11:35 AM	0.2
4949649	ENG	6/3/2020	10:50 AM	6/5/2020	11:33 AM	0.3
4947051	SCIENCE/MATH	6/3/2020	10:51 AM	6/5/2020	11:33 AM	0.2
4949192	SPEECH	6/3/2020	10:51 AM	6/5/2020	11:33 AM	0.3
4947297	OFF-BUSN	6/3/2020	10:55 AM	6/5/2020	11:35 AM	0.2
4947270	BUSINESS	6/3/2020	11:03 AM	6/5/2020	11:35 AM	0.2
4947490	COMP REPAIR	6/3/2020	11:03 AM	6/5/2020	11:40 AM	0.2
4918333	BIOLOGY	6/3/2020	11:04 AM	6/5/2020	11:40 AM	0.2
4947064	CHEMISTRY	6/3/2020	11:05 AM	6/5/2020	11:40 AM	0.2
4947077	GIRLS GYM	6/3/2020	10:50 AM	6/5/2020	11:35 AM	0.2
4958411	GIRLS GYM	6/3/2020	10:50 AM	6/5/2020	11:35 AM	0.2
4947261	GIRLS GYM	6/3/2020	10:50 AM	6/5/2020	11:40 AM	0.2
4955356	GIRLS GYM-DUP	6/3/2020	10:50 AM	6/5/2020	11:35 AM	0.2
4947478	GIRLS GYM-BLANK	6/3/2020	10:50 AM	6/5/2020	11:35 AM	0.2
4947005	CAFÉ	6/3/2020	10:53 AM	6/5/2020	11:35 AM	0.2
4947385	CAFÉ	6/3/2020	10:53 AM	6/5/2020	11:35 AM	0.3
4947191	CAFÉ	6/3/2020	10:53 AM	6/5/2020	11:35 AM	0.2
4958402	CAFÉ-DUP	6/3/2020	10:55 AM	6/5/2020	11:35 AM	0.2
4958450	MECH	6/3/2020	12:10 PM	6/5/2020	12:10 PM	0.3
4947280	MECH	6/3/2020	12:10 PM	6/5/2020	12:10 PM	0.5
4947167	MECH	6/3/2020	12:10 PM	6/5/2020	12:10 PM	0.4
4947008	DRAFTING	6/3/2020	12:08 PM	6/5/2020	12:10 PM	0.6
4947396	DRAFTING	6/3/2020	12:08 PM	6/5/2020	12:10 PM	0.5
4958394	DRAFT-DUP	6/3/2020	12:08 PM	6/5/2020	12:10 PM	0.6
4947259	DRAFT-BLANK	6/3/2020	12:08 PM	6/5/2020	12:10 PM	0.2
4947359	WOOD	6/3/2020	12:11PM	6/5/2020	12:12: PM	0.5
4947042	WOOD	6/3/2020	12:11PM	6/5/2020	12:12: PM	0.5
4947517	WOOD	6/3/2020	12:11PM	6/5/2020	12:12: PM	0.3
4958430	MART	6/3/2020	11:40 AM	6/5/2020	12:00: PM	0.2
4947445	MART	6/3/2020	11:40 AM	6/5/2020	12:00: PM	0.3
4947530	MART-DUP	6/3/2020	11:40 AM	6/5/2020	12:00: PM	0.2
4947120	LUNCH	6/3/2020	11:46 AM	6/5/2020	12:00: PM	0.7
4955639	TECH OFFICE	6/3/2020	11:50 AM	6/5/2020	12:00: PM	0.8
4947300	BUSN OFF	6/3/2020	11:50 AM	6/5/2020	12:00: PM	0.8

APPENDIX 2.0

CHAIN'S OF CUSTODY (COC'S)

RADON TEST CHAIN OF CUSTODY

CLIENT ADDRESS Environmental Inspection Services
11881 Forge Road
Aurora, Oregon 97002

TEST ADDRESS Rogue River High School
1898 East Evans Creek Road
Rogue River, OR. 97537

Serial No.	Location	Cap off time	Date	Cap on time	Date	Results
4958244	Commons (dup)	10:21 AM	6/3/20	11:15 AM	6/5/20	
4947110	Office	10:22 AM		11:15 AM		
4947491	Main office	10:22 AM		11:15 AM		
4947516	Office 11	10:23 AM		11:15 AM		
4947219	AD office	10:23 AM		11:20 AM		
4947236	Staff	10:25 AM		11:25 AM		
4947026	Fac work	10:25 AM		11:45 AM		
4947058	Math 11	10:27 AM		11:30 AM		
4949337	Health	10:30 AM		11:30 AM		
4947010	Math 12	10:35 AM		11:30 AM		
4918343	Eng Annual	10:40		11:25 AM		
4955698	English	10:40 AM		11:25 AM		
4947229	English 13	10:41 AM		11:25 AM		
4949280	Girls AD	10:46 AM		11:20 AM		
4947126	History	10:43 AM		11:30 AM		
✓ 4947343	Social study	10:43 AM		11:33 AM		
4947344	Resource	10:44 AM		11:30 AM		
4947468	↓	10:44 AM	✓	11:30 AM	✓	

RADON TEST CHAIN OF CUSTODY

CLIENT ADDRESS Environmental Inspection Services
11981 Fargo Road
Aurora, Oregon 97002

TEST ADDRESS Rogue River High School
1898 East Eugene Creek Road
Rogue River, Or. 97537

Serial No.	Location	Cap off time	Date	Cap on time	Date	Results
4947061	Resource	10:44am	6/3/20	11:30am	6/5/20	
4949232	Resource (dup)	10:44am		11:30am		
4947007	Language	10:45 am		11:30am		
4947000	Spanish	10:45 m		11:30am		
4918276	ELon	10:50m		11:35 AM		
4949649	Eng	10:50m		11:33 AM		
4947051	Science/math	10:51 am		11:33 am		
4949192	speech	10:51am		11:33 am		
4947297	Off (Bus)	10:55am		11:35 am		
4947270	business	11:03am		11:35 am		
4947490	Comp repair	11:03am		11:40m		
4918333	Biology	11:04am		11:40am		
4947064	Chemistry	11:05		11:40 m		
✓ 4947077	Girls Gym	10:50am		11:35am		
✓ 4958411	↓	10:50am		11:35 am		
4947261	↓	10:50am		11:40am		
✓ 4955356	Girls Gym (dup)	10:50 am		11:35 AM		
✓ 4947478	Girls Gym (blank)	10:50 am		11:35 AM		
4947005	Cafe	10:53am		11:35 am		

RADON TEST CHAIN OF CUSTODY

CLIENT ADDRESS Environmental Inspection Services
11981 Fargo Road
Aurora, Oregon 97002

TEST ADDRESS Rogue River High School
1898 East Evans Creek Road
Rogue River, Oregon 97537

Serial No.	Location	Cap off time	Date	Cap on time	Date	Results
4947385	Cafe	10:53 am	6/3/20	11:35 am	6/5/30	
4947191	↓	10:53 am		11:35 am		
4958402	Cafe (dup)	10:55 am		11:35 am		
4958450	Mech	12:10 pm		12:10 pm		
4947280	↓	12:10 pm		12:10 pm		
4947167	↓	12:10 pm		12:10 pm		
4947008	Drafting	12:08 pm		12:10 pm		
4947396	↓	12:08 pm		12:10 pm		
4958394	Draft (dup)	12:08 pm		12:10 pm		
4947259	Draft (blank)	12:08 pm		12:10 pm		
4947339	Wood	12:11 pm		12:12 pm		
4947042	↓	12:11 pm		12:12 pm		
4947517	↓	12:11 pm		12:12 pm		
4958430	mant	11:40 am		12:00 pm		
4947445	mant	11:40 am		12:00 pm		
4947530	Wood dup	11:40 am		12:00 pm		
4947120	lunch	11:46 am		12:00 pm		
4955639	Tech off	11:50 am		12:00 pm		
✓ 4947300	busN off	11:50	✓	12:00 pm	✓	

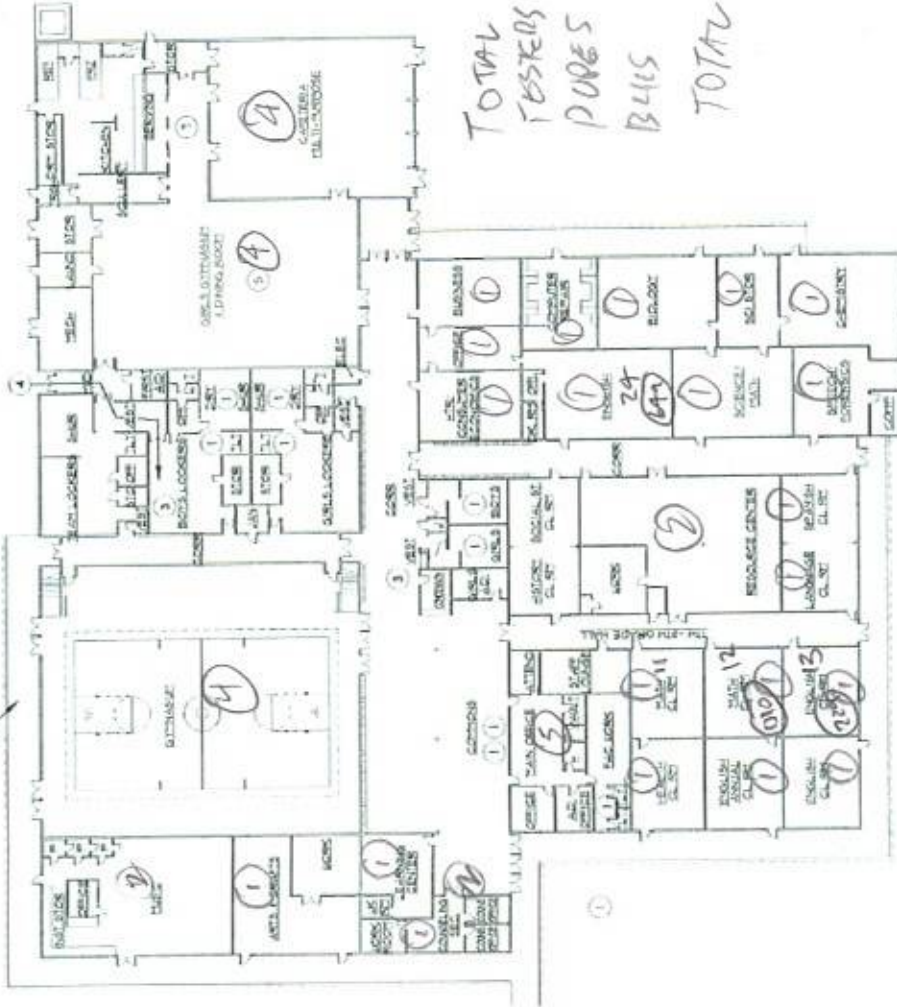
APPENDIX 3.0

SCHOOL SAMPLING FLOOR PLAN

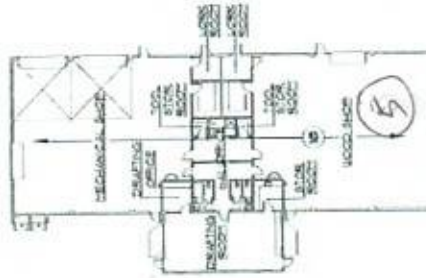
KEY NOTES

HIGH SCHOOL

1. ADA non-compliance, or architectural barrier.
2. Not Used
3. Replace lockers
4. Supervision difficult, security/student safety concerns
5. Consider painting upper wall and ceiling to "brighten" space - dark and oppressive area
6. Re-roof walkway roofing
7. Difficult area for positive student flow - a "pinch point" that should be relieved.
8. Repair holes in upper wall
9. Fire Life & Safety concern regarding egress.
10. Re-roofing necessary.



MULTI-PURPOSE BUILDING
FLOOR PLAN
84,750 SF. TOTAL



INDUSTRIAL ARTS BUILDING
812 SF. TOTAL

ROGUE RIVER HIGH SCHOOL



0' 20' 40' 80'
SCALE: 1"=40'-0"

PROJECT: ROGUE RIVER SCHOOL DISTRICT
NEEDS ASSESSMENT
ROGUE RIVER, OREGON

HCE
ARCHITECTS, ENGINEERS
SURVEYORS & PLANNERS
175 PARK AVE., COOS BAY, OREGON 97420
TEL: 202.226.4444 FAX: 202.226.4444

PRELIMINARY
NOT FOR
CONSTRUCTION

PROJECT NO.
15121

DATE: MAY 2015

REVISION

DATE

BY

REVISION

DATE

BY

5

Copyright © 2015, HCE, Inc.

APPENDIX 4.0
RADON REGULATION

ORS 332.341¹

Provision of information to school districts about elevated levels of radon

- (1) The Oregon Health Authority shall disseminate information related to elevated levels of radon to each school district in this state. Information disseminated under this section must include:
 - (a) Information about radon and the dangers associated with elevated levels of radon;
 - (b) The level of radon at which the United States Environmental Protection Agency recommends schools take action to reduce indoor radon concentrations;
 - (c) Processes by which schools may be tested for elevated levels of radon; **and**
 - (d) Model plans developed pursuant to ORS 332.345 (Tests of schools for elevated levels of radon).
- (2) Dissemination of information under subsection (1)(c) of this section must take into account industry standards for testing buildings for elevated levels of radon.
- (3) Upon request, the State Board of Education shall assist the authority in disseminating the information described in this section. Dissemination of information may occur by any reasonable means, including posting the information on a website maintained by the authority or the Department of Education and providing each school district with instructions on how to access the information. [Formerly 332.166]

Note: 332.341 (Provision of information to school districts about elevated levels of radon) and 332.345 (Tests of schools for elevated levels of radon) were enacted into law by the Legislative Assembly but were not added to or made a part of ORS chapter 332 or any series therein by legislative action. See Preface to Oregon Revised Statutes for further explanation.

News Release

FOR IMMEDIATE RELEASE
Thursday, January 13, 2005

Contact: HHS Press Office
(202) 690-6343

Surgeon General Releases National Health Advisory On Radon

U.S. Surgeon General Richard H. Carmona warned the American public about the risks of breathing indoor radon by issuing a national health advisory today. The advisory is meant to urge Americans to prevent this silent radioactive gas from seeping into their homes and building up to dangerous levels. Dr. Carmona issued the advisory during a two-day Surgeon General's Workshop on Healthy Indoor Environment.

"Indoor radon is the second-leading cause of lung cancer in the United States and breathing it over prolonged periods can present a significant health risk to families all over the country," Dr. Carmona said. "It's important to know that this threat is completely preventable. Radon can be detected with a simple test and fixed through well-established venting techniques."

Radon is an invisible, odorless and tasteless gas, with no immediate health symptoms, that comes from the breakdown of uranium inside the earth. Simple test kits can reveal the amount of radon in any building. Those with high levels can be fixed with simple and affordable venting techniques. According to U.S. Environmental Protection Agency (EPA) estimates, one in every 15 homes nationwide have a high radon level at or above the recommended radon action level of 4 pCi/L per liter of air.

National Health Advisory on Radon

Radon gas in the indoor air of America's homes poses a serious health risk. More than 20,000 Americans die of radon-related lung cancer every year. Millions of homes have an elevated radon level. If you also smoke, your risk of lung cancer is much higher. Test your home for radon every two years, and retest any time you move, make structural changes to your home, or occupy a previously unused level of a house. If you have a radon level of 4 pCi/L or more, take steps to remedy the problem as soon as possible.

"Americans need to know about the risks of indoor radon and have the information and tools they need to take action. That's why EPA is actively promoting the Surgeon General's advice urging all Americans to get their homes tested for radon. If families do find elevated levels in their homes, they can take inexpensive steps that will reduce exposure to this risk," said Jeffrey R. Holmstead, Assistant Administrator, Office of Air and Radiation, U.S. Environmental Protection Agency (EPA).

"Based on national averages, we can expect that many of the homes owned or financed by federal government programs would have potentially elevated radon levels. The federal government has an opportunity to lead by example on this public health risk. We can accomplish this by using the outreach and awareness avenues we have, such as EPA's Web site, to share information and encourage action on radon to reduce risks," said Edwin Piñero, Federal Environmental Executive, Office of the Federal Environmental Executive (OFEE).

A national Public Service Announcement (PSA) that was released to television stations across America in January, National Radon Action Month, is reinforcing this recently updated health advisory. In the television spot, the camera scans a neighborhood with rooftop banners that remind the occupants of the importance to test their homes for radon. The television PSA can be viewed at: <http://www.epa.gov/radon/rnpa.html>.

For more information about radon go to EPA's Web site www.epa.gov/radon; or call your state radon office; or call a national toll-free hotline at 1-800-SOS-RADON (1-800-767-7236).

The Surgeon General's Workshop on Healthy Indoor Environment is bringing together the best scientific minds in the nation to discuss the continuing problem of unhealthful buildings. Indoor environments are structures including workplaces, schools, offices, houses and apartment buildings, and vehicles. According to a recent study, Americans spend between 85 and 95 percent of their time indoors.

In just the past 25 years, the percentage of health evaluations that the National Institute for Occupational Safety and Health at the Centers for Disease Control and Prevention (CDC) has conducted related to indoor-air quality has increased from 0.5 percent of all evaluations in 1978, to 52 percent of all evaluations since 1990. This means that in those years, the evaluations related to air quality concerns have increased from one of every 200 evaluations to one of every two.

The problem is also adversely affecting our children's health as millions of homes and apartments and one in five schools in America have indoor air quality problems. This can trigger various allergies and asthma. Asthma alone accounts for 14 million missed school days each year. The rate of asthma in young children has risen by 160 percent in the past 15 years, and today one out of every 13 school-age children has asthma. Dr. Carmona is especially focusing on how unhealthy indoor environment affects children, as he promotes 2005 as The Year of the Healthy Child.

###

Note: All HHS press releases, fact sheets and other press materials are available at <http://www.hhs.gov/news>.

Last Revised: January 12, 2005

APPENDIX 5.0
CONSULTANT RESUME

RESUME

CHARLES ARTHUR SPEAR

**CENTER FOR ENVIRONMENTAL RESEARCH
& TECHNOLOGY RADON TRAINING**

**CERTIFIED ENVIRONMENTAL CONSULTANT (CEC)
ENVIRONMENTAL ASSESSMENT ASSOCIATION**

**REGISTERED ENVIRONMENTAL ASSESSOR
(Former) REA - 01241**

AHERA INSPECTOR (EPA CERTIFICATION NO. IR-20-2439A

**CERTIFIED ENVIRONMENTAL INSPECTOR
CEI - 10364**

Professional Background

Charles A. Spear, President and founder of Environmental Inspection Services has over 30 years technical experience ranging from facility and school district radon testing to site remediation. Technical employment included food technologist to hazardous waste site remediation at Federal SUPERFUND sites from California to Maryland. Mr. Spear has successfully performed over 3,000 Phase One, Phase Two, and Phase Three Environmental Site Assessment inspections and multiple radon inspections and surveys on properties from California to Alaska and east to Maryland.

Mr. Spear has managed such projects as spilled mustard gas and organophosphate demilitarization and remediation as a decontamination sergeant of the U.S. Army Chemical Corps Technical Escort Unit Drill & Transfer Unit at Umatilla Army Depot and removal of leaking solvent underground storage tanks in California and Oregon. Additional experience included supervision as a USARMY NBC Specialist of focused remediation at the Federal Superfund site known as Aberdeen Proving Grounds, Maryland (Michaelsville Landfill). EIS does not conduct or perform geological work. Geologic work is referred to a state registered geologist.

Specifically, Mr. Spear has worked with clients such as: numerous school districts, Housing & Urban Development, the International Fabric Care Industry (IFI), the U.S. Environmental Protection Agency, The U.S. Department of Defense, The Oregon Department of Environmental Quality (ODEQ), The Oregon Department of Forestry, INTEL, Sun Microsystems, IBM, Rohm & Haas, General Electric, AT&T, Texaco, Unocal, BP, Lockheed Missile and Space Center, FMC Corporation, Oregon Department of Fish & Wildlife, Washington Department of Fish & Wildlife, City of Beaverton, City of Hillsboro, City of Corvallis, Housing Authority of Portland, Northwest Oregon Housing Authority, Washington County Department of Housing, Housing & Urban Development, numerous lenders and mortgage companies, many private development and site remedial site projects, and many attorneys and investors.

Mr. Spear managed complex solvent tank farm removals at Xidex Corporation in Sunnyvale, California and was the site cleanup manager at the Rose City Plating Site currently developed as the Oregon Convention Center. Mr. Spear is a certified hazardous waste professional who has coupled military experience as a Nuclear, Biological and Chemical Specialist (U.S. Army MOS 54E20) with experience as a professional industrial and process research engineer in both the corrugated paper and petroleum industries.

Mr. Spear has managed food industry quality control as an inplant food technologist and prepared cost reduction programs as a corrugated boxboard industrial engineer in Dallas, Texas. He is currently registered with the states of California, Washington, and Oregon and is an active member of the national respected Environmental Assessment Association. Due diligence projects have been performed throughout the United States from Fairbanks, Alaska to San Diego, California.

Professional experience includes the following:

Professional Experience

- * Dry Cleaner Inspections
- * Environmental Consultation
- * Waste Reduction Audits
- * Regulatory Compliance Audits
- * Drum Yard Clearances
- * Tank Farm Removals/Replacements
- * Lab Packaging & Supervision
- * Environmental Site Assessments
- * Superfund Site Remediation
- * Hazardous Waste site Project Design & Management
- * Habitat/Wetlands Restoration
- * AHERA asbestos inspections for school districts
- * Landfill Remediation
- * Agricultural assessments
- * Indoor air quality inspections

Professional Employment/Consultation

- * C.F.S. Continental Coffee, Inc., Food technologist, Chicago, Illinois
- * Holiday Industries, Research Engineer, Grand Prairie, Texas
- * Alton Packaging Corporation, Industrial Engineer, Dallas, Texas
- * U.S. Army Chemical Corps., Nuclear, Biological, Chemical Specialist - Special assignment - Umatilla Army Depot (DATS)
Oregon and permanent assignment U.S. Army Chemical Corps. Technical Escort Unit in Edgewood, Maryland
- * Rollins Environmental Services, Remedial Project Manager
- * Crown Environmental Services, Technical Director, Redmond, California
- * Dames & Moore, Remedial design Engineer, Portland, Oregon
- * Pegasus Environmental Management Services, Director of Technical Services
- * Pacific Tank & Construction, Manager of Estimation, Portland, Oregon
- * Enviro-Logic Inc., Director of Environmental Site Assessment Division
- * Environmental Inspection Services Founder / President

Professional Education

- * Environmental Research & Technology radon training
- * American Standard for Testing & Materials ASTM E1527-13 Training
- * Bachelor of Science, Chemistry, Northeastern Illinois University, 1978
- * U.S. Army Chemical School, Ft. McClellan, Alabama, 1983
- * U.S. Army Technical Escort Unit, Accident / Incident Response Training Center 1983
- * Registered Environmental Assessor REA - 01241 (Former classification)
- * Certified environmental Inspector CEI - 10364
- * AHERA Certified Asbestos Inspector IR-19-2439A
- * ODEQ Soil Matrix Assessor & UST Decommission Supervisor ID No. 10305
- * Washington DOE Registered Environmental Assessor
- * Wetland Specialist - Training Wetlands Institute 1997
- * EPA / HUD Lead-Based Paint (LBP) Certified Inspector & Risk Assessor

Additional Education

- * Joint Military Material Packaging & Transportation
- * Asbestos Abatement Seminar attendance 1987
- * Thin Layer Chromatography, 1989
- * Oregon Registered Underground storage Tank Supervisor, 1998
- * Oregon Registered Soil Matrix Assessor, 1998
- * Washington Registered Assessor, 1991
- * Washington Registered Underground Storage Tank Supervisor, 1991
- * Wetland Training Institute Delineation Course Study University of Portland 1997
- * 40-Hour HAZMAT Certified
- * AHERA-Certified Inspector

Special Skills

- * School District radon surveys and radon control planning
- * Facility Environmental Compliance Audits
- * ASTM standard Environmental Site Assessments
- * Computer Programming
- * Organic surfactant chemical synthesis and analysis
- * Hazardous Waste Site remediation/ estimating/ standards development
- * Design of filtration systems, batch and continuous process optimization studies
- * QA/QC Procedures
- * SUPERFUND Site Management
- * Industrial/ Research Engineering
- * Hazardous Waste Site Remediation/ Consultation
- * Wetlands Delineation and Habitat Restoration

Certification

- * U.S. Army MOS 54E20 - U.S. Army Chemical Corps.
- * International Fire Code Institute (IFCI) Certified UST Supervisor
- * International Fire Code Institute (IFCI) Certified Soil Matrix Assessor
- * Certified Hazardous Waste Manager
- * 40-hour OSHA Training
- * 40-hour OSHA Supervisor Training
- * Registered Environmental Assessor (DOE)
- * DEQ Registered UST Supervisor
- * DEQ Registered Soil Matrix Assessor
- * Resolution Trust Corporation (RTC) approved Environmental Assessor
- * California Registered Environmental Assessor (REA-01241)- program discontinued
- * Department of Ecology (DOE) Registered Environmental Assessor
- * Environmental Assessment Association, Certified Environmental Inspector & Transaction Specialist (CEI-10364)
- * Environmental Assessment Association, Certified Environmental Consultant (CEC)
- * AHERA Certified Asbestos Inspector
- * Wetland Delineator Graduate Wetland Training Institute, University of Portland 1997
- * EPA / HUD LBP Inspector & Risk Assessor
- * ASTM Training class, May, 2004