



STOUGHTON AREA SCHOOL DISTRICT EXECUTIVE SUMMARY

PROVIDED BY FINDORFF

City of Stoughton, Wisconsin 6/21/24

Welcome Vikings!

Welcome to the first edition of the Stoughton Area School District Executive Summary! Make sure to tune in to this bi-weekly newsletter to stay up to date on all the exciting progress, photos, and announcements as construction progresses in your community. Following the last day of school on June 7th, the River Bluff Middle School groundbreaking ceremony marked the unofficial kickoff of construction. We were excited to have the River Bluff staff, school board, and EUA design team join in the celebration to commemorate the start of this project, and all the great projects that will be rolling out across the school district.

We are also happy to announce that two youth apprentices from Stoughton High School will join the Findorff team this summer to help with the construction efforts in the district. Please join us in congratulating Nelson Kuhls and Julian Molnar! Both Nelson and Julian will gain valuable experience working in the field with multiple tradespeople learning skills to be successful in the construction industry.



Above: River Bluff staff, school board, and district leadership photographed outside River Bluff Middle School at groundbreaking ceremony June 7, 2024



Left to right: Steve Smith (Findorff Superintendent), Julian Molnar, Nick Molnar (Julian's Father & Findorff Concrete Superintendent), Matt Claggett (Findorff Senior PM)



Front: Nelson Kuhls & Family, Back: Steve Smith (Findorff Superintendent) & Matt Claggett (Findorff Senior PM)

Questions?

Senior Project Manager, Matt Claggett / 608.729.2155 / mclaggett@findorff.com

Findorff
BUILDING & BEYOND



STOUGHTON AREA SCHOOL DISTRICT EXECUTIVE SUMMARY

PROVIDED BY FINDORFF

City of Stoughton, Wisconsin 6/21/24

River Bluff Campus

The River Bluff Middle School athletic facility addition will feature a new gym, wrestling room, fitness room, and restroom spaces. The addition will also incorporate a new main entrance to the school positioned in front of the new parking lot and student drop-off lanes. Following the demo of the existing Armory Building, this project is already underway with the first foundation walls poured earlier this week! The campus will also see upgrades to the District Office that include improvements to the existing mechanical, electrical, and plumbing (MEP) systems, refreshed finishes throughout the office and common spaces, and the addition of a new entrance area that will add an elevator to provide access to all three levels.



Above: a rendering prepared by the EUA, the project's architects, of the future River Bluff Middle School addition



Above: a photo captured of the progress at River Bluff taken at a similar vantage point of the rendering above

Questions?

Senior Project Manager, Matt Claggett / 608.729.2155 / mclaggett@findorff.com

Findorff
BUILDING & BEYOND



STOUGHTON AREA SCHOOL DISTRICT EXECUTIVE SUMMARY

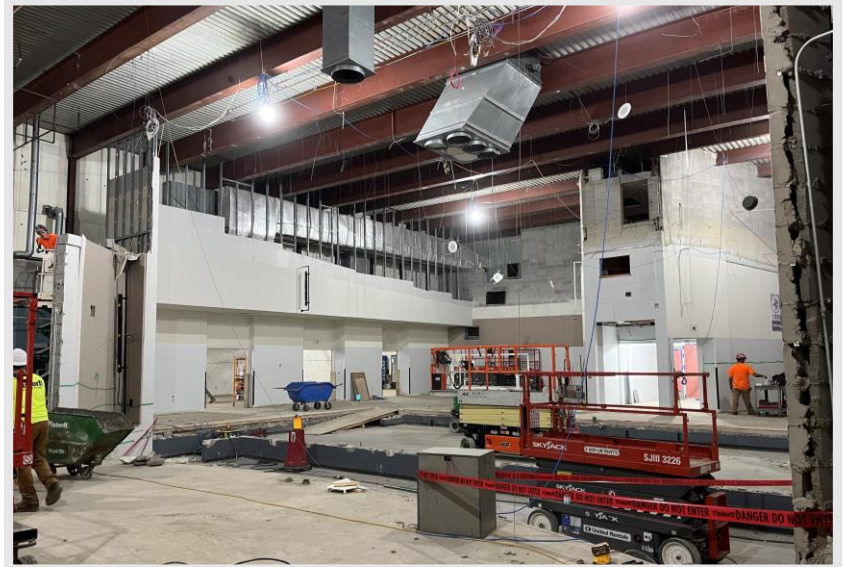
PROVIDED BY FINDORFF

City of Stoughton, Wisconsin 6/21/24

Stoughton High School

Demolition at Stoughton High School is underway and great strides have been made in the new commons. On Tuesday (6/18) the old PAC seating and stage area were poured in place with 55 cubic yards of concrete bringing new life and a sense of openness to the space. This is just the beginning of the transformation the High School commons and kitchen will undergo. The future commons will feature new finishes including wood wall paneling and five massive overhead skylights to provide natural light to the space.

The High School will also see improvements to most of the classrooms, corridors, and common spaces including all new floors, paint, ceilings, and lights along with upgrades to the building's mechanical systems with new air handling and condensing units



Above: a photo taken of the demo progress in the High School commons



Above: a rendering provided by EUA, the building's architects, of the future Stoughton High School commons space

Questions?

Senior Project Manager, Matt Claggett / 608.729.2155 / mclaggett@findorff.com

Findorff
BUILDING & BEYOND



STOUGHTON AREA SCHOOL DISTRICT EXECUTIVE SUMMARY

PROVIDED BY FINDORFF

City of Stoughton, Wisconsin 6/21/24

Yahara Site

At the Yahara site, the old Yahara Elementary has been successfully demolished. In its place, a new building for the district's facilities staff will be erected. The new "Maintenance Building" will spread roughly 17,500 square feet. This structure will feature several offices and storage spaces along side a large shop and garage. Solar panels will cover the new Maintenance Building's roof to help supply power to the building. The site has been prepped for the new construction and materials are flowing in each day. Get ready to watch this structure grow from the ground up!

The existing Yahara Gym still stands and will continue to be a home for Viking athletics! Along with some minor mechanical, electrical, and plumbing (MEP) upgrades, the gym's main entrance will be refreshed with new finishes and doors to enclose the building along the elevation it was separated from the old elementary school.



Above: an aerial of the Yahara Site captured by a Findorff drone flight on (6/18)

Questions?

Senior Project Manager, Matt Claggett / 608.729.2155 / mclaggett@findorff.com

Findorff
BUILDING & BEYOND



STOUGHTON AREA SCHOOL DISTRICT EXECUTIVE SUMMARY

PROVIDED BY FINDORFF

City of Stoughton, Wisconsin 6/21/24

Kegonsa Elementary

Kegonsa Elementary is set to undergo a complete interior make-over this summer that will rejuvenate the school with new flooring, paint, ceilings, and light fixtures throughout all the classrooms, corridors, and most common spaces. Kegonsa will see MEP upgrades as well that include new drinking fountains, boiler system, cabinet unit heaters, and mechanical air handler and condensing units to cool and manage airflow in the school. The school will also benefit from new doors and frames at most of the building's entrances. All this work will be completed this summer, and the school will be ready for students and staff for the start of the 2024-2025 school year!

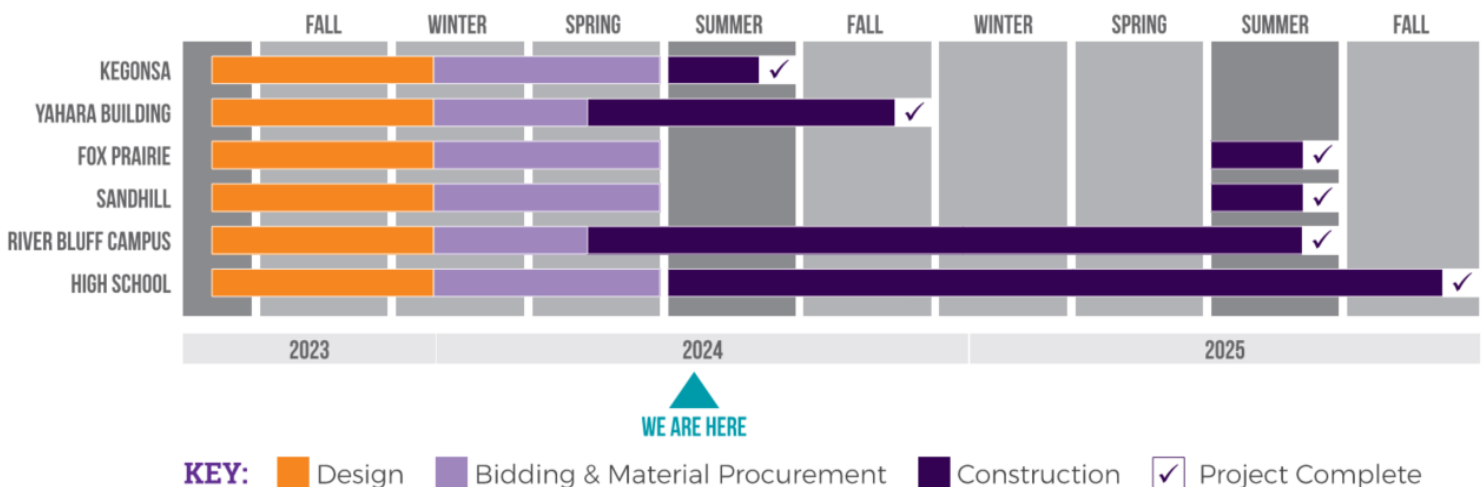


Above: a photo of the demo progress at Kegonsa Elementary

Look Ahead

The work is not complete this year! Next summer Fox Prairie and Sandhill Elementary schools will undergo renovations. Fox Prairie will receive the heaviest renovations that will include new flooring, paint, ceilings, casework, interior doors, casework, and much more! The bulk of the work at Sandhill includes upgrades to the building's mechanical, electrical, and plumbing (MEP) systems along with some minor improvements to exterior finishes.

Below is a high-level schedule breakdown of the work set to take place in the Stoughton Area School District. As you can see, work designing and planning began long before construction kicked off this summer!



Questions?

Senior Project Manager, Matt Claggett / 608.729.2155 / mclaggett@findorff.com

Findorff
BUILDING & BEYOND