

STEMCIVICS REMOTE ONLINE LEARNING PLAN

2024-2025



STEMCivics Charter School District

EMERGENCY HEALTH CLOSURE PLAN

The following document provides guidance in the event of a public health related emergency closure. The procedures established below will be activated when a state and/or local health department issues an order of closure to a school. These procedures are optional for school closures that are initiated by the school or district.

INTRODUCTION

Schools, by their nature, have a high-density human population. In few other facilities are so many people placed together in close proximity for such extended periods of time.

The concentration of people of all ages, backgrounds, and interests brings together great opportunities and possibilities of the unexpected, the difficult, and the unusual.

Needless to say, it is to our benefit and in the interest of our students and their safety to be prepared. We must expect the unexpected, deal with the difficult, and prepare for the unusual.

To this end, this plan will help to prepare you for action. It does not, nor can it be expected to, answer all questions. It does not deal with every possible situation or condition. What it does is familiarize you with some of what can occur at school and sensitize you to the notion that everything and anything is possible. You are reminded that there is no substitute for good judgment, clear thinking, calmness, and reason.

Employees are expected and required to adhere to the provisions of this document. However, no policy manual could ever anticipate all of the infinite fact situations that an employee could

face in the course of organizational and human affairs. In the event that an employee reasonably and honestly believes that to follow a policy or rule in this manual would cause an illegal, unjust or significantly inappropriate outcome, the employee may be excused from adherence to the policy or rule in question. In the event that an employee perceives that such a situation exists and consequently chooses to deviate from the requirements of this manual, the burden will be on the employee to prove that the circumstances he or she faced made it unreasonable to follow policy or rules. If the employee can establish that such was the case, the employee's deviations from the policy or rule will be excused.

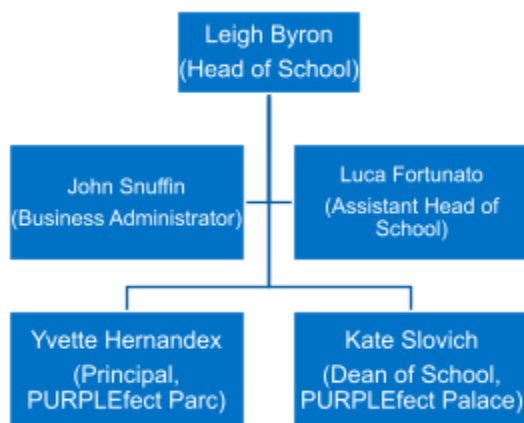
The following suggested procedures and guidelines apply to health-related school closures, including, but not limited to, COVID-19.

DEMOGRAPHIC

STEMCivics primarily services students from Trenton and surrounding areas. Of the 568 students enrolled, 60.92% are Black or African American, 31.34% are Hispanic, 4.58% Unknown, 4.58% 2 or More Races, 0.70% American Indian/Alaskan, 0.35% Asian and 0.18% White. Of the gender representation, 50% identify as females, 49.82% identify as males, 0.18% Unknown. There is 11.97% of the population who have classified learning disabilities with special individual learning plans, 4.9% are English Language Learners, and 33.8% are economically disadvantaged. There are 3 students who are currently migrant or homeless within the district.

CHAIN OF COMMAND

Leigh Byron will alert the dean of school and/or principal(s) of any order of school closure from the health office. Leigh Byron is the only school official authorized to speak to the media.



NOTIFICATION OF SCHOOL CLOSURE

Parents, staff and students will be notified via Facebook, email, and Honeywell Instant Alert.

Staff will also be alerted on WhatsApp.

Honeywell message will be changed to: “Your child did not log into the online learning platform yesterday. No school work was completed. This may affect their attendance and grades. Please contact your child’s dean for more information.”

ONLINE LEARNING PLAN

Parents and students will be notified of the structure and expectations of remote learning via email. The schools’ voicemail messages will be changed to direct parents to these sources of information.

Consequences of non-participation will result in zero credit for work assigned during the school closure.

Students with extenuating circumstances that prevent them from completing online learning should reach out to the school for assistance. STEMCivics has sent parents a list of community resources that can assist with connectivity, including WIFI, phone, and electricity programs.

Paper-based lessons will be available at lunch pick-up location.

Teachers must complete the Online Learning Issues Report by 5pm each day.

Instructional Plan

Grades 6-12

- Lesson Plans will need to be submitted every Monday by 9AM into OnCourse utilizing the Online Learning Lesson Plan outlined below.
- Google Classroom to post instructional videos, assignments, assessments.(See resources below)
- Teachers must respond to student emails or calls within 90 minutes during the school day
- Teachers can utilize Google Hangouts (high school) or Zoom Meeting (middle school) to answer student's questions during office hours
- Teachers will be available during the regularly scheduled school day
 - Middle School: 7:50am-2:16pm (Zoom morning meeting from 7:50-8am)
 - High School: 7:40am-2:34pm (Google Hangout meeting from 8:45am-9am with department meetings to follow)

Student Schedule

Students should expect to spend approximately 40 minutes on each class on "A" or "B" day. On Friday ("A/B") students should expect to spend approximately 20 minutes per class on weekly mini-assessments.

High School Schedule

MONDAY	TUESDAY	WEDNESDAY	THURSDAY	FRIDAY
A	B	A	B	A&B:
MATH HISTORY ENGINEERING PE	ELA SCIENCE MUSIC LATIN (ELECTIVE CLASSES) CAREER EXPLORATION COMPUTER SCIENCE	MATH HISTORY ENGINEERING PE	ELA SCIENCE MUSIC LATIN (ELECTIVE CLASSES) CAREER EXPLORATION COMPUTER SCIENCE	ALL CLASSES (MINI REVIEW LESSONS)

PURPLEfect Parc Middle School Schedule				
Monday	Tuesday	Wednesday	Thursday	Friday
ELA Science PE	Math SS Special	ELA Science PE	Math SS Special	All Content Review

Note that AP, Dual Enrollment, Accelerated, and Honors courses will be offered throughout remote instruction. Student schedules will be designed to meet their individual needs.

Grading

- Teachers must update grades every Friday by 2:30pm (MS- Sunday by 5:00 PM)
- Students will be graded on a Pass/Fail basis for marking periods 3 and 4
- Students may elect to keep their letter grade if it benefits their GPA
- Students may submit marking period 3 work until June 5th for credit
- Students may elect to show mastery of 3rd marking period skills via a teacher designed assessment or approved online assessment in lieu of completing missing work. Students that opt for this route will receive a “Pass” for the 3rd marking period.
- Students’ skill mastery will be assessed through a variety of methods including, but not limited to, project-based assignments, major assessments, minor assessments, online

assessments, oral examinations, end-of-quarter exams and teacher evaluation of overall progress.

Work Submission

- Students must submit daily work by 11:59 PM on the due date to be assigned full credit
- Parents will be notified via phone and/or email by teacher when students are not performing or completing assignments appropriately. If the student remains inactive, the dean and/or guidance counselor will follow up with the parent/guardian.
- MS designated a team to contact parents weekly to discuss grades, student progress, technological issues or needs and important information and updates.

ELL Students

- ELL students may participate in daily online tutoring sessions with their teacher between the hours of 11am-3pm, by appointment over Google Meet or phone.
- Students may utilize live closed-captioning in all Google Meets sessions with teachers and classmates.
- Student and parent communications are distributed in the home language of the student.
- Translators are available to assist students and parents with any school-related concerns.
- For grades 9-12, the needs of ELLs will continue to be met through distance learning in an ESL course on Google Classroom. ESL instruction is provided in an amount and frequency identical to grade-level English Language Arts.
- For grades 6-8, the needs of ELLs will be met through modified lessons and assignments provided by the “push-in” ESL teacher for use in grade-level English Language Arts and other courses.
- All teachers at STEMCivics are familiar with sheltered instruction strategies to differentiate their lessons for ELL students and will continue to use these methods throughout online instruction. Teachers will regularly conference with the ELL specialist to best serve these students.
- ELL students are eligible to borrow a Chromebook from the school and information about free internet access has been disseminated in students’ home languages.

Students with Disabilities

- Tele-services are available for all students who require supportive services, such as speech and counseling and are documented via google classroom or OnCourse notes
- Students with IEPs have access to special education teachers, by appointment, during the school day via Google Meet and Zoom Cloud Meetings all of which are recorded.
- Students requiring pull-out classes have weekly scheduled online sessions with their special education teachers. Individual meetings for MS students can be scheduled upon request from the student. All meetings are recorded.
- Students with disabilities receive regular calls to parents to ensure they are comfortable with the level of support their child is receiving by the case manager or administrative assistant
- Special Education teachers modify assignments for each student based on the specifics within their IEP and document in google classroom/OnCourse. Students are able to request hard copies of assignments in lieu of completing virtual assignments.
- Virtual IEP meetings are being held via google meets. Students in need of re-evaluations will continue their IEP until face-to-face interactions are permitted at which they will be conducted. Initial referrals will be evaluated on other evidence including teacher interviews, parent interviews, standardized test scores, doctor referrals and student grades. Students will be evaluated by the School Psychologist and LDTC once face-to-face interactions are permitted.

Digital Divide

- Students were surveyed and 40% of the high school student body is currently using a cell phone to access online learning
- Loaner chromebooks have been made available at no cost to any student in need of a device
- Teachers are designing lessons that are easy to access and complete on a cell phone (i.e., google forms, online educational apps, Nearpod, Flipgrid)
- Paper lessons are available for pickup in the school mailbox each Wednesday
- Students and parents have received information on free or low-cost internet options available in the community

Suggested Online Lesson Plan Model

- 5-10 minute video of skill being measured.
 - This can be done personally and/or used from an accredited resource.

- 8 minutes of collaboration between students, when applicable
 - i.e. responding to questions on Google Classroom and/or commenting using other online applications, such as a discussion board
- 20-30 minutes of independent work for the students to complete that is evidence of completing the objective

Online Learning Lesson Plan Format

Objective:

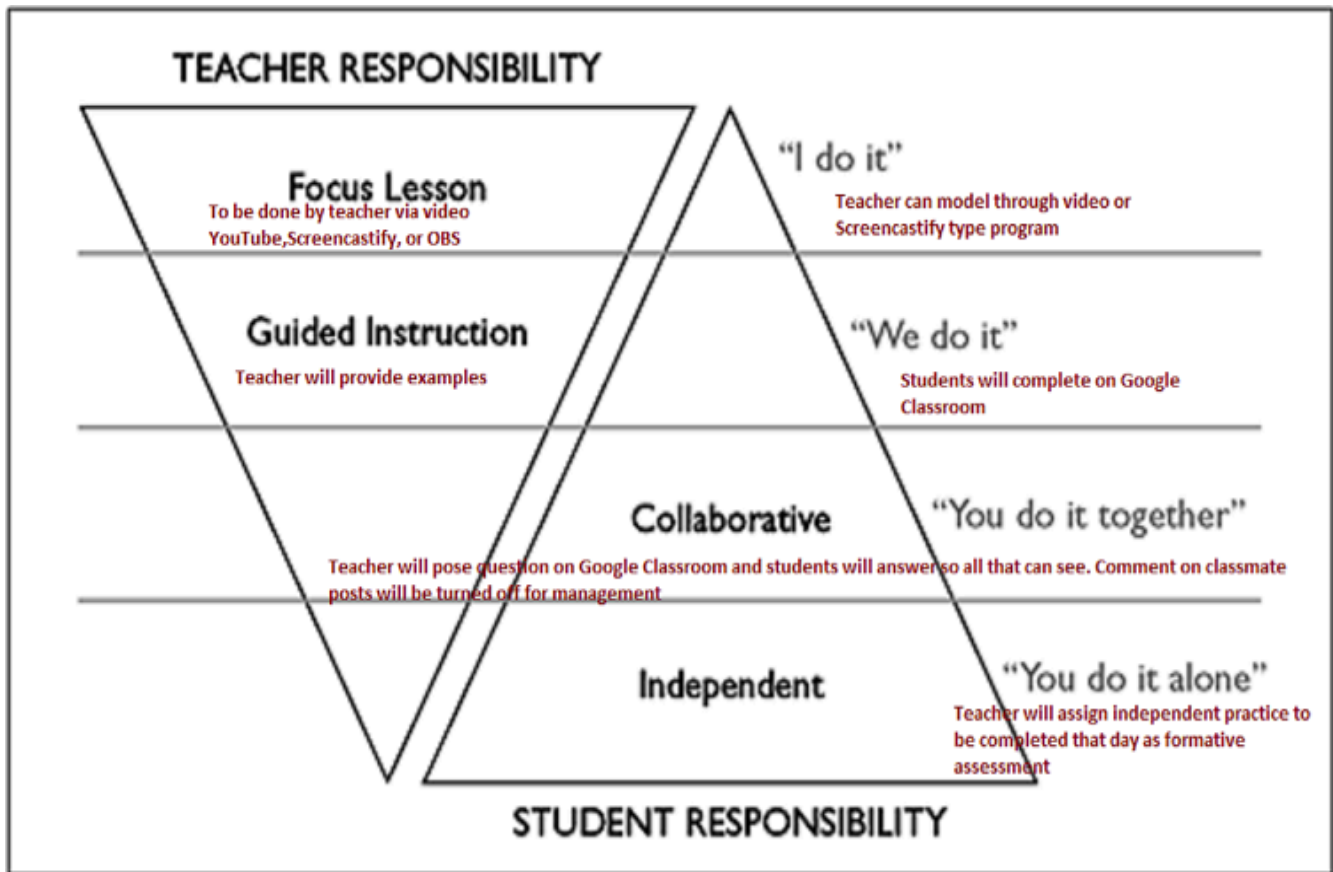
Link(s) to Video/Article:

Questions to Check for Understanding:

Assignment:

NJSLS:

The gradual release model will still be used with the following modifications:



Resources For Teachers

Subject	These links are live and contain Flex E Text Books All have ability to be uploaded to Google Classroom
Math by Level	Grade 8 Algebra I Geometry Algebra II PreCalculus https://phet.colorado.edu/en/simulations/category/new
Math by Subject	Arithmetic Measurement Algebra Geometry Probability

	Statistics Trigonometry Analysis Calculus
Science	Earth Science Life Science Physical Science Biology Chemistry Physics https://phet.colorado.edu/en/simulations/category/new
English	Writing https://commonlit.org https://newsela.com https://artsandculture.google.com/
Social Studies	Economics Geography Government History Philosophy Sociology https://artsandculture.google.com/
PE/ Health	Health
Engineering	Engineering https://phet.colorado.edu/en/simulations/category/new
Physics	https://www.khanacademy.org/science/physics NOVA interactive site https://www.pbslearningmedia.org/ https://phet.colorado.edu/en/simulations/category/new

Online Resources that increase teacher/student interaction and engagement

1. <https://info.flipgrid.com/> Student participation and responses to lesson
2. <https://www.screencastify.com/> Creation of teacher directed lesson by creation of video
3. https://app.seesaw.me/#/login?force_login=signup Annotation of multimedia
4. <https://www.khanacademy.org/coach/dashboard> Science, Math, and Engineering Video and Discussion Questions

- KHAN HOW TO Presentation

https://docs.google.com/presentation/d/19Lth2WB8GcklAdIZxqA0p3WVJz2I_qtrBwP8nevKynM/edit#slide=id.g7b57d2cdb5_0_20

5. <https://www.brainpop.com/> Some free videos that can be used in conjunction with teacher direction
6. <https://www.desmos.com/> Math and Science lessons
7. <https://www.ixl.com/math/> Math
8. <https://www.peardeck.com/microsoft> Recording using Microsoft (PowerPoint etc.)
9. <https://padlet.com/> Multimedia display with interactive component
10. <https://bookcreator.com/>
11. <https://anchor.fm/> Creating Podcast
12. <https://www.discoveryeducation.com/>
13. <https://phet.colorado.edu/en/simulations/category/new> Interactive Science/Math Lessons
14. <https://www.wevideo.com/> Video Editor
15. <https://wakelet.com/> Compile various media into one location (similar to Google Classroom)
16. <https://kahoot.com/>
17. <https://insertlearning.com/> Gives the ability to add learning strategies/tools to ANY website
18. <https://edpuzzle.com/> Make any video into instructional with teacher guided instruction
19. <https://classworkzoom.com/>
20. <https://parlayideas.com/how-it-works/> Online Discussion Questions for group discussions
21. <https://gosynth.com/> Podcast creator (Beta)
22. <https://www.edu.buncee.com/about> Create interactive multimedia presentations
23. <https://www.kamiapp.com/> Annotate Documents and PDF for interactive learning
24. <https://edji.it/#/home> Collaborative Annotation of documents
25. <https://www.qimkit.com/> Live Question/Answer
26. <https://deck.toys>

SPECIAL EDUCATION & ELL

Special education teachers will continue to provide services in compliance with individual education plans. Compensatory instruction will be given upon return to school, as necessary.

- Teachers must provide video lessons to SPED teachers a day in advance so SPED/ELL teachers can modify and upload modified videos to Google Classroom. SPED/ELL teachers will be added as co-teachers in all Google Classrooms and modify work accordingly.
- SPED/ELL teachers should establish office hours for online video conferences via Google Hangouts with their students and an administrator will be present for these conferences.
- Middle school only: SPED teachers are available between 8am-12:30pm and 12:40-2:16pm on Fridays for special education to accommodate extended time. Individual meetings can be requested should students need additional support.
- The district provides communication to parents and students in English and Spanish and Spanish-speaking staff regularly contact families, as needed
- To address educational challenges of ELL students, STEM Civics has enacted the following modified grading procedures:

A student is given a passing grade (P) if he or she performs the following tasks:

1. is prepared for class with needed materials
2. tries all the work assigned to him or her
 - A. uses reference materials (math dictionary, picture dictionary, vocabulary sheets, word walls, google translate and/or bilingual dictionary)
 - B. attempts as much of an assignment as he or she can
 - C. completes portions of modified work
 - D. is attentive during instruction/ group work

E. copies notes when necessary

F. communicates needs and feelings verbally or nonverbally

- A student is given a failing grade (F) if he or she generally does not perform the above tasks

To issue a Pass/Fail grade, go to the "Exceptions" column of your grade book, and click the pencil icon. You will see a dialog with a drop down menu. Select Pass or Fail from that menu.

If these students have been and continue to perform well in your class, you may continue to issue a letter grade instead of utilizing pass/fail. Please choose the option that benefits these students the most.

FIELD TRIPS AND EXTRACURRICULAR EVENTS

In the event of a school closure, all sports, field trips, service trips and extracurricular events will be canceled. Parents will be notified by the athletic director and/or civic engagement coordinator.

- As a precautionary measure, all trips for the district have been canceled at this time.
- Sports are continuing and will follow the guidance of the Mercer County Health Department and the Burlington County Athletic League for future closures
- Sporting events must have less than 250 people in attendance

ATTENDANCE

- Per the guidance document released on March 6th:

Requirements to Implement a Public Health-Related School Closure NJDOH guidance identifies school closure as a potential strategy to limit transmission within a community. In the event a board of education is provided a written directive by either the NJDOH or the health officer of the jurisdiction to institute a public health-related closure, the board of education may utilize home instruction to provide instructional services to enrolled students. The provision of home instruction services should be guided by N.J.A.C. 6A:16-10.1 and may include direct services, online instruction, services provided through contract with another district board of education, or any other means developed by the district to meet the needs of its students. **Any day in which students impacted by a public health-related closure have access to home instruction services provided consistent with the guidance in this memo will count as a day in which the board of education has provided public school facilities toward its compliance with the 180-day requirement in accordance with N.J.S.A. 18A:7F-9.**

- Front office will run daily attendance report via teacher's classroom attendance reports
- Students will be marked "Present" **for the day** if they have logged in to their daily assigned Google Classroom at any time prior to 11:59pm
- Student will be marked "Present" **for class** if they have completed the "Do Now" question posted in each Google Classroom
- Attendance will not be a factor in promotion, retention, graduation, discipline, or any other decisions that will affect the student
- Attendance administrator will call families weekly to notify of student non-participation

STUDENT SUPPORT SERVICES

STEMCivics contracts through Delta-T for speech and child study team services. Delta-T will continue to provide these services to students at their homes or other location, unless ordered to close by a state agency. The coordinator of the guidance department will arrange for home visits.

In addition, parents/guardians have been provided with the following referrals for students who require additional services. The providers listed below take insurance and offer services on a sliding scale.

Counseling

Perform Care

(877) 652-7624

300 Horizon Dr Suite 306, Trenton, NJ 08691

<http://www.performcarenj.org/index.aspx>

Princeton House Behavioral Health

609-497-3300

<https://www.princetonhcs.org/care-services/princeton-house-behavioral-health>

Millhill Child and Family Development

609-989-7333

<https://www.millhillcenter.org/>

Physical Therapy

RWJ Rehabilitation Hamilton

3100 Quakerbridge Road

Hamilton, NJ 08619

(609) 584-6640

<https://www.rwjbh.org/our-locations/outpatient-rehab-center/rwj-rehabilitation-hamilton/>

Capital Health Regional Medical Center

750 Brunswick Avenue

Trenton, NJ 08638

609-394-6000

<https://www.capitalhealth.org/medical-services/rehab-services/physical-therapy>

Speech Therapy

RWJ Rehabilitation Hamilton

3100 Quakerbridge Road

Hamilton, NJ 08619

(609) 584-6640

<https://www.rwjbh.org/our-locations/outpatient-rehab-center/rwj-rehabilitation-hamilton/>

Capital Health Regional Medical Center

750 Brunswick Avenue

Trenton, NJ 08638

609-394-6000

<https://www.capitalhealth.org/medical-services/rehab-services/speech-pathology>

Occupational Therapy

RWJ Rehabilitation Hamilton

3100 Quakerbridge Road

Hamilton, NJ 08619

(609) 584-6640

<https://www.rwjbh.org/our-locations/outpatient-rehab-center/rwj-rehabilitation-hamilton/>

Capital Health Regional Medical Center

750 Brunswick Avenue

Trenton, NJ 08638

609-394-6000

<https://www.capitalhealth.org/medical-services/rehab-services/occupational-therapy>

Childcare

High School Students

Boys and Girls Club

1040 Spruce Street

Lawrenceville, NJ

(609) 695-6060

Middle School Students

Boys and Girls Club

212 Centre Street

Trenton, NJ

(609) 392-3191

YMCA

431 Pennington Ave

Trenton, NJ 08618

FREE AND REDUCED-PRICED LUNCH

Over of STEMCivics students receive free or reduced lunch. In order to continue to provide this service, the schools will serve breakfast and lunch for pick-up at the following locations on Mondays and Thursdays between 10:30am-12pm:

Middle School: 720 Bellevue Ave. (rear driveway)

High School: 1555 Pennington Road (gym entrance)

On food distribution days, students may pick up meals for 3 days on Monday and meals for 2 days on Thursday. Food will be provided in individual, sealed packages and masks and gloves have been provided to food service workers. Signs have been placed that indicate workers will stay 6 feet from students/parents during food pickup, and cones/barriers mark out safe distances. Parents/students are encouraged to wear masks during food pickup.

In the event the campuses are not an approved location, Karson Food will drop off the STEMCivics breakfasts and lunches at the following community locations:

High School Students

Boys and Girls Club
1040 Spruce Street
Lawrenceville, NJ
(609) 695-6060

Middle School Students

Boys and Girls Club
212 Centre Street
Trenton, NJ
(609) 392-3191

A STEMCivics representative will be available each day to distribute and track the breakfast and lunch distribution.

FINANCIALS

STEMCivics is financially solvent and can cover all debts for one month without a disbursement from the home district. In the event that a closure delays the disbursements beyond one month, a short-term loan will be obtained through the Bank of America, with which STEMCivics has an established relationship.

- The board will meet remotely in the event of a closure and has successfully completed tests of this online meeting process

TRANSPORTATION

STEMCivics is not a transportation district. As such, there are no accommodations to be made for disruption of bus service.

High School Only: Due to the high school's location outside of the students' home district, the school will close voluntarily if the spread of coronavirus leads to disruption of the public bus service and school attendance drops below 2/3 of the student body.

IMMUNOCOMPROMISED STAFF & STUDENTS

Immunocompromised and/or high-risk staff and students have been given the option to work from home, prior to any school closure orders. This will operate as a test-run for school closure procedures and continue to protect the health of the most vulnerable in our community.

PREVENTION

- Daily cleaning of the schools & weekend deep cleaning
- High-touch surfaces cleaned with Clorox each night
- Wipes, hand sanitizer, and/or Lysol spray distributed to all classrooms
- Hand sanitizer placed in common areas
- Hand washing posters displayed in all bathrooms and common areas
- Computers wiped down throughout the day
- Face masks to be worn by staff and students
- All school events in excess of 250 people and school trips are canceled
- Staggered arrival and dismissal times at the high school limit the number of students in the building at one time

FACILITIES

- School maintenance personnel are on site at each school on a daily basis to manage building maintenance and upkeep
- Monthly pest control services will continue, as scheduled, unless the vendor is restricted from operating
- Student lockers will be cleaned out and all items placed in plastic bags for student pickup, by appointment

SUMMER PROGRAMMING

- Our current SpEd population does not have ESY as part of their IEP
- STEMCivics will continue to utilize Educere to address credit recovery
- Biannual assessments via Iready diagnostics will be used as a basis for evaluating student academic level and progress

- Iready will be administered in the first marking period of 2020 to attain data relevant to student progress
- Curriculum pacing guides will be restructured and adjusted to meet the needs of the students and address any slide related to school closure
- RTI programs will be continued and adjusted to include remote capacity and will provide intervention and basic skills for those determined to have learning loss
- Both quantitative and qualitative data will be used in the metrics to identify areas of need

Preliminary Graduation Plan

Two separate ceremonies will be held, dividing the class alphabetically, in order to reduce the number of people gathering for the event. Social distancing guidelines will be followed throughout the event.

Date & Time: July 8 & 9, 6pm

Location: Outdoors, in the rear parking lot of the high school

- Event will be limited to 45 minutes or less
- Graduates will be seated in chairs 6 feet apart
- Number of guests will be limited to ensure social distancing can be observed
- The ceremony will be “no contact” (graduates will pick up their diploma from a table)
- Chairs/tents will not be provided to guests to discourage gathering in close proximity
- Each event will have no more than 40 graduates and their invited guests
- Staff will be limited to 3-5 essential personnel
- Hand sanitizer and masks will be available at the event
- Communication to parents/students will encourage masks and social distancing
- Throwing of caps will be prohibited
- Essential Staff will stand on stage/at podium 6 feet from each other and graduates

ESSENTIAL PERSONNEL

- Meal & computer distribution team, as referenced above
- School maintenance and custodial management: 1 per school
- Administrative:
 - Head of School
 - Business Administrator
 - Dean/Principal (1 per school)

APPENDIX A.

Karson Food Service Memo

KARSON FOOD SERVICE, INC.

3409 Rose Avenue, Ocean, NJ, 07712

732-922-1900

March 10, 2020

To: School Food Service Managers/Administrators

From: Bob Kardane-Karson Food Service, Inc.

In response to the Department of Education directive for schools to have a plan to feed students getting free and reduced meals, should the school close due to a local outbreak of the Coronavirus, Karson Foods recommends the following steps be taken.

The school should:

1. Secure a single designated spot (school parking lot, Church, Municipal Building, etc.) for the meals to be dropped at and picked up by the student or their family member.
2. Assign a staff member to meet the Karson Food truck at a time that corresponds with the schools normal delivery time.
3. Karson Foods will drop at the designated spot a compliant, grab and go cold lunch with the sandwich, fruit, and vegetable all wrapped together as one component. The milk will come in a milk crate and will be packed separately. If breakfast is also being offered, that will be picked up with the lunch, and will be for the next days' consumption, just like our service now. The breakfast will also be a compliant breakfast, with all the items wrapped as one component, with the milk packed separately.

As your food service provider, we at Karson Food Service, Inc. understand the challenges that you will face should your school be forced to close, and we will do everything we can to help you get through this difficult time.

Sincerely,

Bob Kardane

Appendix B.

Absentee Questionnaire for COVID-19

This form is to be completed by office staff if/when he/she receives a phone call for illness-related reasons. This information is to be forwarded to the school nurse for informational purposes only.

Student Name: _____ Grade: _____ Date: _____

Does your child:	Yes	No
1. have a fever _____(Temperature:_____)	_____	_____
2. have a cough _____	_____	_____
3. shortness of breath _____	_____	_____
4. under care of doctor _____	_____	_____
5. travelled out of the country _____	_____	_____
6. contact with people who traveled out of country _____	_____	_____

Please forward to the school nurse on a daily basis after taking attendance by 11 am.

Appendix D.

STEMCivics Weekly Pandemic Census

When 15 percent or more of the school student and/or staff population is absent due to pandemic related symptoms, use this form to report weekly to Mercer County Health Services Public Health Division's Communicable Disease Programs.

School _____ Phone Number _____ Week Ending _____

K-8th _____

City: _____ School District: STEMCivics

Reporting Individual _____ Phone _____

Students

Number of students absent with flu-like illness this week _____

Total number of students enrolled in your school _____

ADA for the week _____

Staff/Faculty

Number of staff/faculty absent with flu-like illness this week _____

Total number of staff/faculty employed in your school _____

Assistance Needed/Comments:

***For Administrative Use Only**

Appendix E.

High School Online Tutoring Schedule

A	B	C	D	E	F
	Monday	Tuesday	Wednesday	Thursday	Friday
CYNTHIA BIELSKIE		ALG1 IDOF 11:30 Alg 1 Tutoring TUESDAY10:45		PRE ALG IDOF MEETING Pre-Alg Tutoring 10:45	
BRIAN PRICE, - 1pm daily meet	Accuplacer - 11am	2pm - Senior Support		Accuplacer - 11am	
JANA GRAHAM		IXL Meeting- Juniors@2pm IXL Meeting- Seniors@3pm			
RACHNA GARG		Pre-Calculus-11-11:45am Garg Pre-Calculus Hon - 12-12:30pm Garg Calculus -12:30-1pm		Pre-Calculus-11-11:45am Garg Pre-Calculus Hon - 12-12:30pm Garg Calculus -12:30-1pm Garg/Miss V. Statistics 1/2 - 1-2pm	
ENGLISH					
BEN FINKELSTEIN	English 1 - 10:30-11:30				
EBONY SEMMON	ENGLISH II	ENGLISH II	ENGLISH II	ENGLISH II	ENGLISH II
PATRICIA DYCH	DYCH 11:00 AM		English III 1 pm		
YVETTE HERNANDEZ					
SCIENCE					
JENNIFER PFAFF	Pfaff Meeting 1		Pfaff Meeting 2		
KELLY BARNA			Barna Biology 1pm		
LEO WANG					
AIZA NAWAZ	Physics Meeting Gr12				
HISTORY					
TIM HART		MWH 11:30 GRADE 9		MWH 11:30 GRADE 9	
SHAWN KENNEDY		KENNEDY 12:30		Kennedy 12:30 Group B	
JEFFREY WEISSMAN				WEISSMAN GRADE 11 1PM WEISSMAN GRADE 11 1:30 PM	
MUSIC					
JODI GERVER	Meet w/ AS & JS 2:00pm	Music 1:00 Extra Help	Music 1:00pm Extra Help	Music 1:00pm Extra Help	
ENGINEERING/MATH		Honors Geometry Extra Help 11:30 PRE ENGINEERING 10:30 AM		Honors Geometry Extra Help 11:30 PRE ENGINEERING 10:30 AM	
WOHEE IRIS KIM					
JEANETTE WITTMER					
DASOM KIM		Civil Engineering 10:30am		Civil Engineering 10:30am	
LATIN					
ANDREW IDE		Latin Noon and 1:00	Latin 12:00 and 1:00	Latin 1:00	Friday 1:00
PE/HEALTH					
JIM BECKER					
BILL HILL	Tuesday 1:30-2		Thursday 1:30-2		
MATT STURM	Tuesday 1-1:30 Sturm 11th > Tuesday 1:30-2 Sturm 12th >	https://meet.google.com/yjy-hxdg-dth https://meet.google.com/bwj-tpzi-sgq		Friday 1-1:30 Sturm 11th > Friday 1:30-2 Sturm 12th >	https://meet.google.com/yjy-hxdg-dth https://meet.google.com/bwj-tpzi-sgq
ESL					
MAXWELL KRAMER	11AM-3PM OFFICE HOURS DAILY BY APPT	11AM-3PM OFFICE HOURS DAILY BY APPT	11AM-3PM OFFICE HOURS DAILY BY APPT	11AM-3PM OFFICE HOURS DAILY BY APPT	11AM-3PM OFFICE HOURS DAILY BY APPT
SPED					

* SPED schedule has been redacted to ensure student privacy