



2020/21 REOPENING GUIDEBOOK

---

WORK  
TOGETHER  
TO  
LEARN  
TOGETHER

---





# 2020-21 EAGLE COUNTY SCHOOLS STUDENT CALENDAR

|  |                             |                             |
|--|-----------------------------|-----------------------------|
| <ul style="list-style-type: none"> <li><span style="display: inline-block; width: 15px; height: 10px; background-color: #ADD8E6; border: 1px solid black; margin-right: 5px;"></span> Teachers Only – No School for Students</li> <li><span style="display: inline-block; width: 15px; height: 10px; background-color: #FFFF00; border: 1px solid black; margin-right: 5px;"></span> FIRST DAY of School</li> <li><span style="display: inline-block; width: 15px; height: 10px; background-color: #D8BFD8; border: 1px solid black; margin-right: 5px;"></span> Teachers Only – No School, Elem. Test Days</li> <li><span style="display: inline-block; width: 15px; height: 10px; background-color: #90EE90; border: 1px solid black; margin-right: 5px;"></span> School Not in Session</li> <li><span style="display: inline-block; width: 15px; height: 10px; background-color: #333333; border: 1px solid black; margin-right: 5px;"></span> End of First Semester</li> <li><span style="display: inline-block; width: 15px; height: 10px; background-color: #FFD700; border: 1px solid black; margin-right: 5px;"></span> End of Second Semester/LAST DAY of School</li> </ul> | <b>AUGUST</b>               | <b>SEPTEMBER</b>            |
|  | SUN MON TUE WED THU FRI SAT | SUN MON TUE WED THU FRI SAT |
|  | 1                           | 1 2 3 4 5                   |
|  | 2 3 4 5 6 7 8               | 6 7 8 9 10 11 12            |
|  | 9 10 11 12 13 14 15         | 13 14 15 16 17 18 19        |
|  | 16 17 18 19 20 21 22        | 20 21 22 23 24 25 26        |
| 23 24 25 26 27 28 29   | 27 28 29 30                 |                             |
| 30 31  |                             |                             |
| <b>OCTOBER</b>   | <b>NOVEMBER</b>             | <b>DECEMBER</b>             |
| SUN MON TUE WED THU FRI SAT  | SUN MON TUE WED THU FRI SAT | SUN MON TUE WED THU FRI SAT |
| 1 2 3  | 1 2 3 4 5 6 7               | 1 2 3 4 5                   |
| 4 5 6 7 8 9 10   | 8 9 10 11 12 13 14          | 6 7 8 9 10 11 12            |
| 11 12 13 14 15 16 17   | 15 16 17 18 19 20 21        | 13 14 15 16 17 18 19        |
| 18 19 20 21 22 23 24   | 22 23 24 25 26 27 28        | 20 21 22 23 24 25 26        |
| 25 26 27 28 29 30 31   | 29 30                       | 27 28 29 30 31              |
| <b>JANUARY</b>   | <b>FEBRUARY</b>             | <b>MARCH</b>                |
| SUN MON TUE WED THU FRI SAT  | SUN MON TUE WED THU FRI SAT | SUN MON TUE WED THU FRI SAT |
| 1 2  | 1 2 3 4 5 6                 | 1 2 3 4 5 6                 |
| 3 4 5 6 7 8 9  | 7 8 9 10 11 12 13           | 7 8 9 10 11 12 13           |
| 10 11 12 13 14 15 16   | 14 15 16 17 18 19 20        | 14 15 16 17 18 19 20        |
| 17 18 19 20 21 22 23   | 21 22 23 24 25 26 27        | 21 22 23 24 25 26 27        |
| 24 25 26 27 28 29 30   | 28                          | 28 29 30 31                 |
| 31   |                             |                             |
| <b>APRIL</b>   | <b>MAY</b>                  | <b>JUNE</b>                 |
| SUN MON TUE WED THU FRI SAT  | SUN MON TUE WED THU FRI SAT | SUN MON TUE WED THU FRI SAT |
| 1 2 3  | 1                           | 1 2 3 4 5                   |
| 4 5 6 7 8 9 10   | 2 3 4 5 6 7 8               | 6 7 8 9 10 11 12            |
| 11 12 13 14 15 16 17   | 9 10 11 12 13 14 15         | 13 14 15 16 17 18 19        |
| 18 19 20 21 22 23 24   | 16 17 18 19 20 21 22        | 20 21 22 23 24 25 26        |
| 25 26 27 28 29 30  | 23 24 25 26 27 28 29        | 27 28 29 30                 |
|  | 30 31                       |                             |

**HIGHLIGHTS**

- 8/10 – 8/24: Teachers Only – No School for Students
- 8/18 – 8/21: Testing for Elementary Students, By Appointment
- 8/25: First Day of School – Check Your Student’s Schedule
- 9/07: Labor Day – School Not in Session
- 10/12 – 10/16: School Not in Session
- 11/23 – 11/27: Thanksgiving Break – School Not in Session
- 12/17: End of 1st Semester
- 12/18: Teachers Only – No School for Students
- 12/21 – 1/01: Winter Break – School Not in Session

**HIGHLIGHTS**

- 1/04: Teachers Only – No School for Students
  - 1/18: Martin Luther King Jr. Holiday – School Not in Session
  - 2/15 – 2/19: Mid-Winter Break – School Not in Session
  - 3/19 – 3/22: Teachers Only – No School for Students
  - 4/19 – 4/23: Spring Break – School Not in Session
  - 5/31: Memorial Day – School Not in Session
  - 6/03: End of 2nd Semester & Last Day of School
  - 6/04: Teachers Only – No School for Students
- BOE APPROVED 7/22/20 | 166 STUDENT CONTACT DAYS





Dear Families and Staff of Eagle County Schools,

SY2020-21 will be a unique challenge due to the ongoing presence of COVID-19 in our community. In order to "learn together," we'll need to "work together" at an unprecedented level. Collectively, we must pull together and be vigilant about following the rules of containment in order to keep the community's health status in the Comfortable or Cautious categories as determined by Eagle County Public Health. Visit (and bookmark) [sites.google.com/eaglecounty.us/covidperformanceindicators/](https://sites.google.com/eaglecounty.us/covidperformanceindicators/) to view this measure of key performance indicators. Public Health updates this weekly and it will serve as our compass in navigating the school year.

### **Working Together**

For parents, working together means performing a simple symptoms check on your children before sending them off to school. Keep them home if they, or anyone in your immediate household, shows symptoms, especially cough, shortness of breath or fever. Help us by being patient with changes in schedules, being quick to respond to calls regarding illness that happen during the day, and keeping your emergency contact information up-to-date.

For staff, working together means being open to different tasks and processes that are required this year. It also means doing your own self-symptom check and staying home if symptomatic. Being prepared for transitions. Altering your own classroom behavior to maintain more distance than previously necessary.

For everyone, we will encounter surprises and things we can't plan for during this school year. We will all pull together to do what is best for students and staff.

### **Learning Together**

This year will be different. However, our foundation remains: Hearts & Minds. We have to reach a student's heart before we can inspire their mind. We'll continue our equity training, taking away barriers from those most distant from educational justice due to poverty and language barriers.

Teachers, students, and parents are ALL excited and ready to return to in-person instruction. Significant safeguards have been put in place, but it all starts with three simple steps: stay home if sick, wear face coverings, and maintain as much distance as possible. From there, we'll be vigilant to isolate those who develop symptoms and cooperate with Public Health to minimize the potential for further transmission.

In the event we utilize remote learning, it will include schedules, attendance, assignments, and accountability. We've simplified our classroom communications and streamlined technology around a single Learning Management System (LMS).

Sincerely,

A handwritten signature in black ink that reads "Philip Qualman". The signature is written in a cursive, flowing style.

Philip Qualman, Superintendent

# QUICK SUMMARY

Eagle County Schools is approaching this year with caution, safety, and hope. Here is an outline of some of the more obvious changes to normal routines.

## ALL ADULTS AND CHILDREN WILL WEAR A FACE COVERING

### CHANGES FOR FAMILIES

- Please screen your child for symptoms before sending them to the bus or dropping them off at school.
- If your child has any symptoms, please keep them home and seek medical care.
- If a student develops symptoms of COVID-19, they will be isolated until a parent or guardian can pick them up. Temperatures at or above 100.4°F may require transportation by ambulance if parents or guardians are not reachable.
- If a child needs to be picked up, please notify schools ahead of your arrival so they are ready for pick-up.
- Emergency contact numbers must be kept up-to-date. Call your school's registrar immediately upon changes to telephone numbers or address.
- Limited visitors or volunteers will be permitted by appointment only.
- Our buildings will be locked until staff arrive at 7:30 AM.
- Schools will have specific pick-up, drop-off, and bus zones.

### CHANGES FOR STUDENTS

- Students should avoid handshakes, high-fives, fist-bumps, and hugs.
- Additional hand sanitizing stations will be placed at entrances and in classrooms.
- In as many ways possible, we will practice social distancing throughout the day.
- If you ride a bus, you will be screened at schools prior to entry.
- If you ride in a car, you will be screened at drop-off.
- After screening, students will grab breakfast (if applicable) and go to their classroom to eat.
- Students will have assigned seats whenever possible.
- Students will be seated individually and use individual materials whenever possible.
- During lunch, if cafeterias are used, students will sit on one side of the table with social distance between seats.
- Water fountains will not be used except to refill bottles.
- In special areas, like libraries, teachers will sanitize between groups. In classrooms, teachers will sanitize high touch surfaces throughout the day.

# TABLE OF CONTENTS

|   |           |  |           |
|---|-----------|--|-----------|
| <b>HEALTH GUIDELINES</b>                      | <b>6</b>  | <b>SCHOOL ROLES</b>                          | <b>22</b> |
| One Plan with Three Models                    | 7         | Health Screenings at Entry                   | 23        |
| Layers of Protection                          | 8         | Cleaning and Disinfecting                    | 24        |
| Key Protocols                                 | 9         | Worksite Health and Safety                   | 25        |
| <b>SCHOOL BASICS</b>                          | <b>11</b> | <b>COVID-19 RESPONSE</b>                     | <b>26</b> |
| Elementary Model: One Room Schoolhouse        | 12        | When Symptoms of COVID-19 Develop            | 27        |
| Middle School Model: Reduced Class Sizes      | 12        | Thresholds for Going Remote                  | 28        |
| K-8 Model: Modified Efforts                   | 12        | Whole-School Remote                          | 29        |
| High School Model For BMHS, EVHS, VSSA (5-12) | 13        | District-Wide Remote                         | 30        |
| High School Model For RCHS                    | 13        | Returning After Symptoms of COVID-19         | 30        |
| Enrollment Options                            | 14        | <b>CURRICULUM AND INSTRUCTION</b>            | <b>31</b> |
| Class Sizes                                   | 15        | Flexible Curriculum, Instruction, Assessment | 32        |
| Nutritional Services                          | 15        | Accountability, Streamlining, Training       | 32        |
| Bus Transportation                            | 16        | Graduation Requirements                      | 33        |
| Athletics/Activities                          | 16        | Definitions                                  | 34        |
| <b>PARENT ROLES</b>                           | <b>17</b> | <b>RESOURCES</b>                             | <b>35</b> |
| Home Screenings                               | 18        | Login Information                            | 36        |
| Drop-Off and Pick-Up                          | 18        | Stay Connected                               | 36        |
| Contact Information                           | 18        | Notes  | 37        |
| <b>STUDENT ROLES</b>                          | <b>19</b> | Directory                                    | 38        |
| Face Coverings Required                       | 20        |  |           |
| Student Hygiene                               | 21        |  |           |
| Social Distancing                             | 21        |  |           |



---

WORK  
TOGETHER  
— TO —  
LEARN  
TOGETHER

---

# ONE PLAN WITH THREE MODELS

**Returning to school in the presence of COVID-19 requires a flexible approach to learning that balances the benefits of in-person instruction with student and staff health and continuity of learning.**

Every decision lands somewhere along this continuum, and changes based on the prevailing health conditions of the community. Eagle County School District strives to provide exceptional educational experiences, while maximizing a return to normalcy and minimizing the health risk to staff and students.

With input from parents, staff, and the community, and incorporating guidelines from Public Health and the Colorado Department of Education, **ECSD plans to return to school on August 25, 2020.**

We want to return to in-person instruction. But we can't do this without community support, and won't do it at the expense of the health of our students and staff. *Opening schools, and keeping them open, requires the cooperation of everyone in the community.*

We need to **work together** to keep the epidemiological indicator in the green or yellow zones. Green, we're back to normal. Yellow, we're back with restrictions. Red, we're back to remote learning.

## The County COVID-19 Epidemiological Indicator Guides Instructional/School Delivery Model for ECS



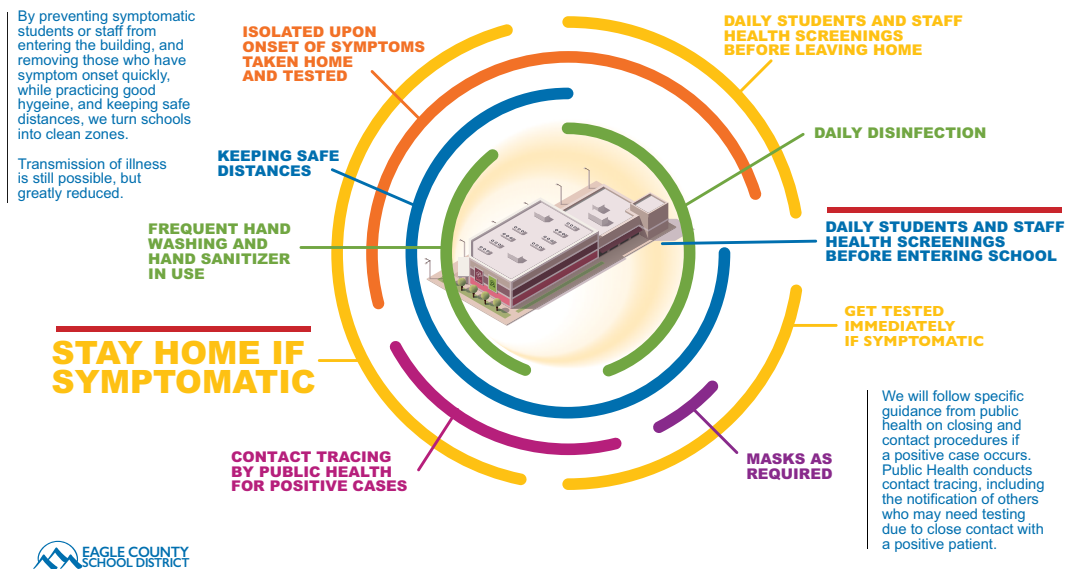


# LAYERS OF PROTECTION

Like security zones in an airport, our protocols combine to create layers of protection. Parents screen at home. Schools screen before access. Visitors are limited. Staff and students wear face coverings. Personal hygiene and frequent cleaning limits germs. Those who become sick are isolated immediately. Contact tracing by Public Health advises further containment measures.

It's not feasible to cover every possible scenario and situation that may arise due to the ongoing presence of COVID-19 in our community. The district has a layered approach to planning that provides district and levels guidance that are supplemented by school protocols. Individual schools will supplement this guidebook with additional information specific to the school community.

## CREATING A CLEAN ZONE THROUGH LAYERS OF PROTECTION





## KEY PROTOCOLS

# ENTERING A CLEAN ZONE



**SYMPTOM CHECKS  
BEFORE ENTRY**



**FACE COVERINGS  
REQUIRED**



**KEEPING SAFE  
DISTANCES**



**HAND SANITIZER  
IN USE**



**DISINFECTED AREA**



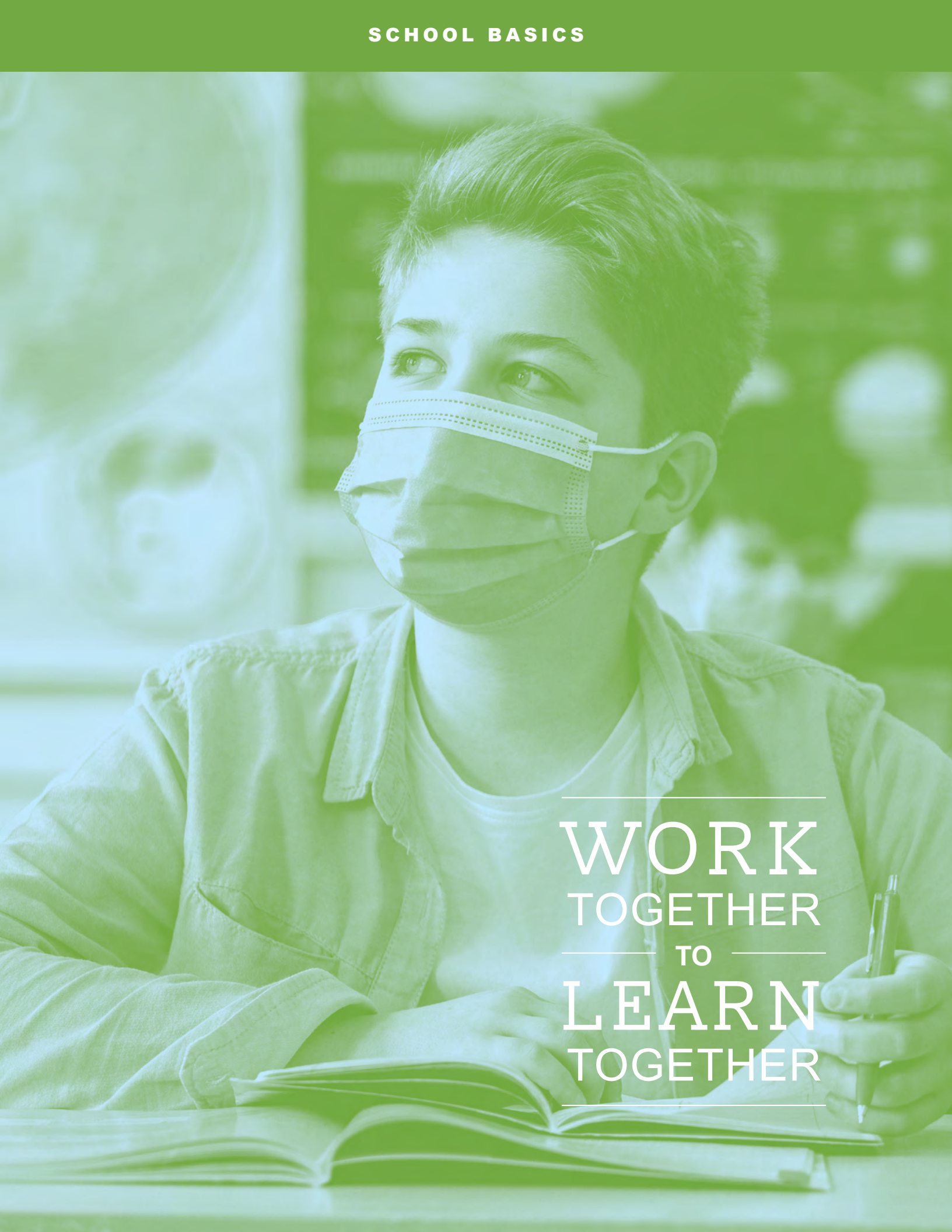
## KEY PROTOCOLS

Public Health has said a school environment is generally safer than other public spaces where people gather. This is because schools restrict access to the ill, are under constant adult supervision, and can rapidly remove those who become sick from the group.

1. **Do not allow students, staff, vendors, parents, guardians, or guests on-site if:**
  - They are showing symptoms of COVID-19
  - Have been in “close contact” with someone confirmed or suspected to have COVID-19 in the previous 14 days.
2. **All students,\* staff, volunteers, and guests must wear face coverings in school settings as required.**
3. **Access to visitors, vendors, and non-essential volunteers will be limited.**
4. **Stay home when sick, practice social distancing, including at bus stops, and ensuring good hand hygiene.**
5. **Each school will have isolation rooms for students who develop symptoms while at school.**
6. **Student attendance will be taken with latitude for doctor’s notes for absences due to symptoms congruent with COVID-19.**
7. **Staff leave policies will be flexible including, a COVID-19 sick bank, paid leave, accrued paid leave, sick leave bank, FMLA, and unemployment benefits if alternative work options are unattainable.**
8. **Train staff in health and safety protocols, including how to screen for symptoms, wearing PPE, frequent cleaning and proper hand washing, and what to do if someone develops symptoms of COVID-19.**
9. **All facilities will operate in accordance with state and local safety and health rules.**
10. **High-risk individuals should consult with their doctor before returning to in-person instruction.**

*\*When developmentally appropriate*





---

WORK  
TOGETHER  
— TO —  
LEARN  
TOGETHER

---

## **ELEMENTARY MODEL: ONE ROOM SCHOOLHOUSE**

Hold in-person instruction four days a week. Wednesdays will be used for staff planning time, meetings, and other student learning.

Organize students into small cohort groups and keep them with the same teacher all day, as much as possible to increase social distancing.

Stagger schedules for recess to reduce numbers and define areas to maintain social distancing.

Emphasize relationships between students and teachers.

## **MIDDLE SCHOOL MODEL: REDUCED CLASS SIZES**

Hold in-person instruction four days a week. Wednesdays will be used for staff planning time, meetings, and other student learning.

Organize students into manageable cohorts by grade level and limit access to other grades to increase social distancing.

Students will rotate to core subject teachers (English, Math, Science, Social Studies) and maintain grade-level cohorts.

## **K-8 MODEL: MODIFIED EFFORTS**

Homestake Peak and the Eagle County Charter Academy have unique K-8 models and will modify elementary and middle school efforts as needed to increase social distancing.



## **HIGH SCHOOL MODEL FOR BMHS, EVHS, VSSA (5-12)**

A hybrid A/B model to allow all students ½ time in-person instruction and ½ time remote learning. Half of the student population in the building at a time allows for increased social distancing.

1,000 students, dozens of teachers, and hundreds of classes prevent distancing or grouping by cohort. Students will be divided into two groups by last names.

When students are not at school, they will be tasked with completing learning activities independently in a “flipped classroom” model. Teachers will be trained in flipped classroom instruction to maximize in-person time and provide more direction for remote learning time.

Schools will be able to offer the same rich variety of curriculum as they always have, including AP, DE, Arts, Technology, PE, Culinary, Vocational, etc. Students will have the option of taking a class on their off day if the schedule is limited.

## **HIGH SCHOOL MODEL FOR RCHS**

Red Canyon High School (both campuses) has a unique project-based schedule and low class sizes and requires limited schedule accommodations in response to COVID-19.

# ENROLLMENT OPTIONS

## Neighborhood School

We recommend remaining enrolled in your neighborhood school or the school you have chosen to attend. All schools are prepared to transition to short-term remote learning in response to a COVID-19 caused closure or absence. Remaining with your neighborhood school maintains relationships with teachers, friends, and the school community.

Contact your school principal if you are interested in this option but prefer to start remotely for a short period of time.

## World Academy

World Academy is our free, proven, entirely online school. It's been in operation for over 12 years and provides aligned curriculum with limited, but local, teacher support and opportunities for local socialization and participation in district sports and activities. World Academy is self-paced and intended for students who are interested in **long-term online school**. Students can transition in/out at term breaks. Contact Troy Dudley [Troy.Dudley@eagleschools.net](mailto:Troy.Dudley@eagleschools.net) if you are interested in this option.



## CLASS SIZES

The shift to 4-day, in-person instruction and hybrid schedules at high schools are efforts to reduce class sizes and provide smaller cohorts of students. Within schools, we are maximizing social distance by aligning desks and tables to face the same direction, and making use of the entire classroom space (no group spaces).

We are adapting learning tables, work stations, small group space and collaborative learning areas to maximize social distance.

## NUTRITIONAL SERVICES

### Cafeteria

All levels will stagger lunch times to reduce the number of students in the cafeteria at a given time. Lunch lines and seating will be marked-off to indicate where students should walk and sit. Elementary and middle schools will remain in their cohort groups.

At this time there will not be any self-serve salad bars, a la carte options will be limited, and staff will distribute condiments. Students will use their Student ID to scan barcodes and numbers for lunch instead of using a pin pad. Grab and go lunches will be available for students on a remote schedule.

### Meal Practices:

- **Grab-n-go services**
- **Staggered lunch times**
- **Single-use utensils**
- **Maintain cohort groups**
- **Practice social distancing**

## BUS TRANSPORTATION

Parents are encouraged to find alternatives to bus transportation to help reduce ridership and expand social distance on buses. Walking, biking, and parent driving are encouraged.

### If your student needs to ride the bus:

- Parents must pre-screen students before they leave home.
- All passengers and drivers will wear face coverings.
- Riders are kept as far apart as possible, will load rear to front with assigned seats.
- Windows will be open as much as possible to maximize airflow.
- Buses are disinfected between routes.

## ATHLETICS/ACTIVITIES

Eagle County School District understands and values the importance of athletics and activities in the lives and development of our students. Every effort will be made to keep these programs on track. High school athletics and activities are governed by CHSAA (Colorado High School Activities Association). The latest guidelines are available at [chsaanow.com/coronavirus](https://chsaanow.com/coronavirus).

### Athletic Directors

Will utilize the most up-to-date guidelines from CHSAA on schedules, practices and competitions.

### Parents

Should anticipate the need to be flexible and supportive of athletic/activity schedules.

### Coaches

Will have the most sport-specific information on practices and competitions.

### Middle Schools

Middle School athletics will follow guidelines for high school sports and activities.



WORK  
TOGETHER  
TO  
LEARN  
TOGETHER



## HOME SCREENINGS

Parents should check their children for signs of illness each morning before leaving home, especially if riding a bus. Students with **ANY** illness must stay home. Inform your child's school of any illness. We will be working with public health to monitor illness spread and track symptoms.

### Symptoms to look for:

- Cough
- Difficulty breathing
- A fever of 100.4 or higher
- Sore throat
- Loss of taste or smell
- Muscle or body aches
- Nausea/vomiting/diarrhea
- Congestion/runny nose
- Chills
- Unusual fatigue

## DROP-OFF AND PICK-UP

Schools will establish drop-off and pick-up protocols to keep students as far apart as possible.

This can include one-way traffic flows, greeting students at vehicles, having distance markers, and staggering entry times.

Parents should avoid entering schools unnecessarily, especially at drop-off and pick-up. Please call first and schedule a specific appointment.

## CONTACT INFORMATION

Keep contact information up-to-date and make emergency pick-up plans with family, friends, or neighbors to assist as needed.

# STUDENT ROLES



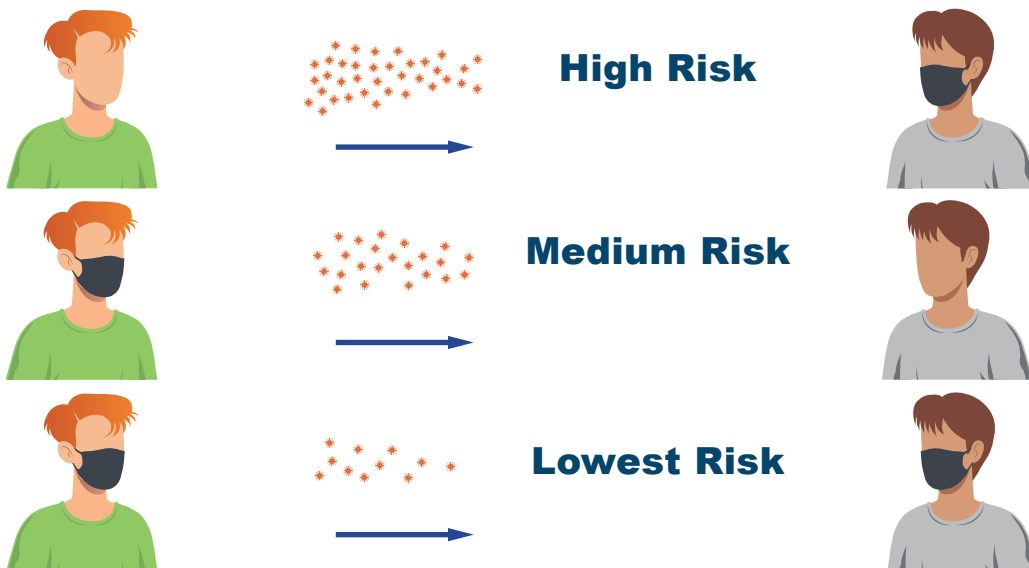
WORK  
TOGETHER  
TO  
LEARN  
TOGETHER

## FACE COVERINGS REQUIRED\*

Wearing cloth face covering helps reduce the spread of COVID-19 and is required of staff and students not working alone.

### COVID-19 Carrier

### Healthy Person



**Both parties wearing face coverings creates the lowest risk of spreading of COVID-19.**

\*Face coverings should not be worn by:

- Those with certain disabilities
- Those with respiratory conditions
- Those who are hearing impaired
- Those so advised by a medical professional

Clear plastic face shields can be worn in addition to face coverings, but are not considered as effective at disease control. Young students should use face coverings that they can use independently as much as possible.



## STUDENT HYGIENE

Students and staff are advised to wash hands for 20 seconds or use hand sanitizer at these times:

- Arrival to school
- Before meals or snacks
- After being outside
- After restroom use
- After nose blowing or sneezing
- Before going home
- Young children will be supervised

## SOCIAL DISTANCING

Efforts to promote social distancing depend on student age and ability. Some extracurricular and club activities may not happen this year.

1. Avoid handshakes, high-fives, fist-bumps, and hugs.
2. Don't congregate in groups outside of class or before school.
3. Maintain social distance at bus stops and don't rush to load the bus.
4. There will be limited field trips, assemblies, or other large gatherings.
5. No in-person performances, school wide parent meetings, or pep rallies.
6. Significant modifications or suspension of activities like band or choir.
7. Increased space between desks, with seats facing the same direction.
8. Reduce hallway congestion with staggered release times.
9. Limit cross-school transfer for special classes.
10. These guidelines are for student and staff safety and health.



WORK  
TOGETHER  
— TO —  
LEARN  
TOGETHER

# HEALTH SCREENINGS AT ENTRY

All staff and students will be observationally checked for signs of illness upon entry each day. Those with ANY illness must stay home. Temperatures will be taken on entry. Those exhibiting symptoms or fever will be isolated for pick-up.

## **We will look for and ask about these symptoms:**

- Cough
- Difficulty breathing
- Fever of 100.4°F or higher
- Sore throat
- Loss of taste or smell
- Muscle or body aches
- Nausea/vomiting/diarrhea
- Congestion/runny nose
- Chills
- Unusual fatigue

**Students or staff *must be excluded* from the school if they have any of these symptoms. Parents should screen at home first and rapidly respond to requests to pick-up a sick student.**



# CLEANING AND DISINFECTING

Cleaning efforts are coordinated with facilities staff and follow our plan on file with the CDE. Staff will help clean, sanitize, & disinfect during the day, custodians will disinfect at night.

**Cleaning** removes germs, food, dirt, fluids, and other material to improve sanitation and disinfection. Wash hands after cleaning.

**Sanitizing** reduces germs on surfaces to safe levels.

**Disinfecting** kills germs on surfaces.

## High-Touch Surfaces

High-touch surfaces will be cleaned and sanitized throughout the day and when students change locations. These include:

|                   |   |
|-------------------|---|
| Door knobs        | Restrooms                                 |
| Faucet handles    | Work surfaces<br>(desks/tables/keyboards) |
| Check-in counters |   |

**Ventilation** has been adjusted to maximize fresh air intake.

## Teaching Materials

Use of hands-on and shared teaching material will be minimized. Students will be assigned their own Chromebook to reduce sharing. The CDC does not consider books to be high-risk for transferring the virus.

**Carpets** will be vacuumed using HEPA filters.

## Outdoor Areas

High-touch surfaces made of plastic or metal (like handrails) will be cleaned routinely. However, use of disinfectants outdoors is not effective and not a good use of resources.

## WORKSITE HEALTH AND SAFETY

Keeping staff healthy is paramount to keeping schools open. Extensive absences may affect our in-person learning and further require flexible modalities. Absences of other staff may reduce services.

School districts have a general obligation to provide a safe and healthy work environment. We must follow guidelines by Public Health specifically related to COVID-19.

- Staff will be screened for symptoms, including a temperature check, each day.
- Staff should stay home if sick, or go home immediately if they become sick at work.
- Face coverings by staff are required except when working alone in an office or vehicle.
- Maintain 6-feet of social distance between people to the maximum ***extent possible***.
- Frequent cleaning of high-touch surfaces during the day is ***everyone's responsibility***.
- Encourage frequent hand washing and keep stations well-stocked.
- Maintain isolation rooms at all facilities to isolate the symptomatic.
- District to provide to staff PPE materials appropriate for the task being performed (gloves, face coverings, face shields, and/or goggles).
- Cordon off areas where a suspected positive person has been until it can be cleaned, sanitized, and disinfected.
- Follow the district's COVID-19 cleaning plan.



WORK  
TOGETHER  
TO  
LEARN  
TOGETHER



If a person believes they've been in close contact with someone infected by COVID-19, *they should not go to work, child care, or school for 14 days* and watch their health for onset of symptoms.

## WHEN SYMPTOMS OF COVID-19 DEVELOP

- 1. Move the student away from others and to the established isolation room.**
- 2. Contact parents for immediate pick-up and encourage testing for COVID-19.**
- 3. Notify other parents and share Public Health contact information and guidelines.**
- 4. We will inform Public Health of a possible exposure so they can conduct thorough contact tracing.**
- 5. Classmates may be deemed "close contacts" and asked to self-quarantine for 14 school days.**
- 6. A symptomatic staff member will notify supervisors, take leave, get tested, and self-quarantine.**

# THRESHOLDS FOR GOING REMOTE

During the school year, the district may close a classroom/cohort, grade level, school, or the entire district. At that time, students would transition to synchronous remote learning. All decisions to close are made in collaboration with Public Health.

## Elementary Schools

- If there is a single positive COVID-19 test in a classroom, then that class and teacher will need to quarantine for 14 days.
- If students or staff from a classroom are sent home with symptoms, then Eagle County Public Health will provide guidance after reviewing each incident.
- If there are multiple positive COVID-19 cases of students and staff in different grade levels of the school (up to 5% of the total school population), then that school building will close for 14 days.

## Middle Schools

- If there is a single positive COVID-19 test in a grade level, then that grade level will need to quarantine for 14 days.
- If students or staff from a grade level are sent home with symptoms, then Eagle County Public Health will provide guidance after reviewing each incident.
- If all three grade levels in a school are under quarantine, then the school building will close for 14 days.

## Battle Mountain High School, Eagle Valley High School, and Vail Ski & Snowboard Academy

- If there is a single positive COVID-19 test in Group A or B, then that Group will need to quarantine for 14 days, excluding most teachers.
- If students or staff from in Group A or B are sent home with symptoms, then Eagle County Public Health will provide guidance after reviewing each incident.
- If there are multiple positive COVID-19 cases of students and staff in the school (up to 5% of the total school population), then that school building will close for 14 days.

## Red Canyon High School

- If there is a single positive COVID-19 test in one class on one campus, then that class on that campus will need to quarantine for 14 days.
- If students or staff from one class on one campus are sent home with symptoms, then Eagle County Public Health will provide guidance after reviewing each incident.
- If there are multiple positive COVID-19 cases of students and staff in different grade levels of the school (up to 5% of the total school population), then that school building will close for 14 days.

## WHOLE-SCHOOL REMOTE

**In the event that a whole school transitions to remote learning due to COVID-19, all levels will:**

- Take attendance daily**
- Use Schoology to deliver and organize instructional materials**
- Maintain synchronous learning schedules**
- Maintain traditional grading practices**

Elementary Schools, Middle Schools, and Red Canyon High School will shift in-school instruction to synchronous online delivery.

Battle Mountain High School, Eagle Valley High School, and Vail Ski & Snowboard Academy will maintain the hybrid schedule, but shift in-school instruction to synchronous online delivery.



## DISTRICT-WIDE REMOTE

- If the Eagle County Weekly Key Performance Indicator points to “Concerned,” then all Eagle County Schools will move to remote learning until the Key Performance Indicator moves back to “Cautious.”
- If the number of unfilled staff leaves becomes unmanageable by remaining staff members, then all Eagle County Schools will move to remote learning for 14 days.

## RETURNING AFTER SYMPTOMS OF COVID-19

1. At least three days have passed after **RECOVERY** – no fever, cough, other symptoms **AND...**
2. 10 days have passed since symptom onset **OR...**
3. It’s been three days since **RECOVERY** and a health care provider certifies the student or staff member does not have COVID-19.



---

WORK  
TOGETHER  
— TO —  
LEARN  
TOGETHER

---

## **FLEXIBLE CURRICULUM, INSTRUCTION, ASSESSMENT**

To be flexible in transitioning from in-person to remote learning, we will focus on power standards within the curricular frameworks and maintain traditional grading practices. We will manage engagement by blending or rotating subjects and allowing the response (assignments) to be possible in multiple mediums. Instruction will attend to the whole child with emphasis on the social-emotional impact of the pandemic. Schools will connect academics with cultural diversity that includes those farthest from educational opportunities.

## **ACCOUNTABILITY, STREAMLINING, TRAINING**

Take daily attendance and report absences as normal, even if we experience remote learning.

Maintain synchronous class schedules during remote learning.

Simplify and increase communication with one standard learning management platform, Schoology.

Provide parent and student training on Schoology and educational technology at the beginning of the school year.


# GRADUATION REQUIREMENTS

High School will start in a hybrid A/B alternating schedule so that all students receive two days of in-person instruction while social distancing is required. This will be evaluated on a quarterly basis with the intent to transition to a normal schedule as soon as it is safe to do so.

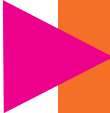
**IF** we stay in a hybrid model for most of the year, the Board of Education will reduce graduation credit requirements by one elective credit. Core requirements remain unchanged.




## DEFINITIONS



The hybrid alternating schedule at our traditional high schools divides the students in half. Half come to school on A days. The other half come on B days. When students aren't in school, they're engaged in online learning directed by teachers.



Synchronous scheduling means that online or remote learning follows a set schedule just as if the school day was held in-person. Students may have math for one period and science for another, both according to a schedule.



Schoology is a learning management system (LMS) that works as a dashboard. Daily assignments, schedules, and resources are all located in one place to streamline technology-based learning.



---

WORK  
TOGETHER  
— TO —  
LEARN  
TOGETHER

---

## LOGIN INFORMATION

### Parents:

This year is going to require an unprecedented level of collaboration between students, parents, and staff members. Each of your child's teachers can be reached via email, [FIRSTNAME.LASTNAME@eagleschools.net](mailto:FIRSTNAME.LASTNAME@eagleschools.net). If you're unsure of a teacher's first name, please check our Staff Directory, available on [eagleschools.net](http://eagleschools.net) under the "District Info" tab.

All schools will use Schoology as the primary technology platform for remote lessons and assignments. PowerSchool is used to monitor your child's grades. Keep the login information for these accounts to make keeping up with your child's flexible school year easier.

Chromebooks issued by the district will come preloaded with software.

Schoology Login: \_\_\_\_\_

PowerSchool Login: \_\_\_\_\_

## STAY CONNECTED

Follow the social media accounts for Eagle County Schools and your specific school. We use social media as a daily conversation with parents, staff, and the community.

**Facebook:** [eagle.schools](https://www.facebook.com/eagle.schools)

**Twitter:** [@eagleCOschools](https://twitter.com/eagleCOschools)

**Instagram:** [@eagle.schools](https://www.instagram.com/eagle.schools)





# DIRECTORY

## **AVON ELEMENTARY SCHOOL**

(970) 328-2950

Principal Dana Harrison

(970) 328-2982

[Dana.Harrison@eagleschools.net](mailto:Dana.Harrison@eagleschools.net)

## **BRUSH CREEK ELEMENTARY SCHOOL**

(970) 328-8930

Principal Brooke Cole

(970) 328-4068

[Emily.Cole@eagleschools.net](mailto:Emily.Cole@eagleschools.net)

## **EAGLE COUNTY CHARTER ACADEMY (K8)**

(970) 926-0656

Principal Kim Walter

(970) 390-9975

[Kimberly.Walter@eagleschools.net](mailto:Kimberly.Walter@eagleschools.net)

## **EAGLE VALLEY ELEMENTARY SCHOOL**

(970) 328-6981

Principal Tiffany Dougherty

(970) 328-8924

[Tiffany.Dougherty@eagleschools.net](mailto:Tiffany.Dougherty@eagleschools.net)

## **EDWARDS ELEMENTARY SCHOOL**

(970) 328-2970

Principal Matt Abramowitz

(970) 328-2979

[Matthew.Abramowitz@eagleschools.net](mailto:Matthew.Abramowitz@eagleschools.net)

## **GYPSUM ELEMENTARY SCHOOL**

(970) 328-8940

Principal Mitchell Forsberg

(970) 328-8959

[Mitchell.Forsberg@eagleschools.net](mailto:Mitchell.Forsberg@eagleschools.net)

## **HOMESTAKE PEAK SCHOOL (K8)**

(970) 328-2940

Principal Stephanie Gallegos

(970) 328-2949

[Stephanie.Gallegos@eagleschools.net](mailto:Stephanie.Gallegos@eagleschools.net)

## **RED HILL ELEMENTARY SCHOOL**

(970) 328-8970

Principal Eric Olsen

(970) 328-8979

[Eric.Olsen@eagleschools.net](mailto:Eric.Olsen@eagleschools.net)

## **RED SANDSTONE ELEMENTARY**

(970) 328-2910

Principal Marcie Laidman

(970) 328-2919

[Marcelle.Laidman@eagleschools.net](mailto:Marcelle.Laidman@eagleschools.net)

## **BERRY CREEK MIDDLE SCHOOL**

(970) 328-2960

Principal Amy Vanwel

(970) 328-2969

[Amy.Vanwel@eagleschools.net](mailto:Amy.Vanwel@eagleschools.net)

## **EAGLE VALLEY MIDDLE SCHOOL**

(970) 328-6224

Principal Eric Mandeville

(970) 328-8919

[Eric.Mandeville@eagleschools.net](mailto:Eric.Mandeville@eagleschools.net)

## **GYPSUM CREEK MIDDLE SCHOOL**

(970) 328-8980

Principal David Russell

(970) 328-8989

[David.Russell@eagleschools.net](mailto:David.Russell@eagleschools.net)

## **VAIL SKI & SNOWBOARD ACADEMY (5-12)**

(970) 328-2830

Principal Wade Hill

(970) 328-2839

[Wade.Hill@eagleschools.net](mailto:Wade.Hill@eagleschools.net)

## **BATTLE MOUNTAIN HIGH SCHOOL**

(970) 328-2930

Principal Rob Parish

(970) 328-2939

[Robert.Parish@eagleschools.net](mailto:Robert.Parish@eagleschools.net)

## **EAGLE VALLEY HIGH SCHOOL**

(970) 328-8960

Principal Greg Doan

(970) 328-8969

[Gregory.Doan@eagleschools.net](mailto:Gregory.Doan@eagleschools.net)

## **RED CANYON HIGH SCHOOL & WORLD ACADEMY**

(970) 328-2852

Principal Troy Dudley

(970) 328-2859

[Troy.Dudley@eagleschools.net](mailto:Troy.Dudley@eagleschools.net)

### Sources:

Eagle County Public Health

Colorado Department of Education

Colorado Department of Public Health

US Center for Disease Control

American Academy of Pediatrics

Colorado Association of School Executives

American Association of School Administrators

Colorado Association of School Boards

A variety of district plans from all over the world



**948 Chambers Avenue  
PO Box 740  
Eagle, Colorado 81631**

**970 328-6321 (Phone)  
970 328-1024 (Fax)  
[info@eagleschools.net](mailto:info@eagleschools.net)**

