



GSL eNews

Monday, November 28, 2022

CALENDAR PREVIEW

Next 4 Weeks

November

28-December 12

Annual GSL Student Food Drive Led by 5th Grade

28-December 1

1st Trimester Middle School Art Show

28-December 2

ERB Testing for Grade 3, 8:30-10 a.m.

ERB Testing for Grade 4, 9-10:30 a.m.

29-December 2

ERB Testing for Grades 5-8, 8:30-10 a.m.

29

Middle School Chapel, 8:05 a.m.

30

Lower School Chapel, 8:05 a.m.

December

1

All-School Chapel, 8:05 a.m.

Preschool Chapel, 8:35 a.m.

2

Celebration, Hosted by Jessica Muller
8:05 a.m., GSL Church

3

It's Holiday Storytime at GSL!
9 a.m., Anchor Library

5-6

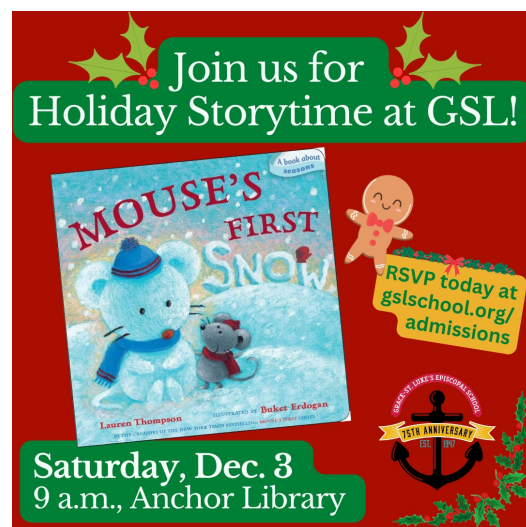
Auditions for Middle School Spring Play
3:10-4:30 p.m., Performing Arts Space

6



2022 Grandparents' Day Photos

We had such a wonderful time last week with all of our grandparents and special friends! A big thank you to all families who participated in this fantastic GSL tradition. [Click here](#) to view our 2022 Grandparents' Day photo album on Facebook!



It's Holiday Storytime at GSL!

Sat., December 3 at 9 a.m.

Anchor Library (250 Lemaster)

For current and prospective families of children who will be age 2-4 by June 1, 2023. Come join us, and please tell your friends! We'll have a read-

Middle School Chapel, 8:05 a.m.

7

Lower School Chapel, 8:05 a.m.

8

All-School Hanukkah Chapel, 8:05 a.m.

4th Grade Parents Tour 5th Grade, 8:30 a.m.

Preschool Chapel, 8:35 a.m.

9

Celebration, Hosted by Allyson Campbell
8:05 a.m., GSL Church

12-16

Lost & Found Items on Display

13

Middle School Chapel, 8:05 a.m.

14

Lower School Chapel, 8:05 a.m.

3rd Grade Christmas Around the World
Presentations, 10:45 a.m. - 12:15 p.m.,
McClure Hall

15

Dress Uniform for Grades 1-8

All-School Christmas Chapel: Lessons & Carols
8:05 a.m., GSL Church

Preschool Chapel, 8:35 a.m.

Lower School Advent-Christmas Chapel
6-6:45 p.m., GSL Church

16

Red & Green Dress Down Day

Celebration: Christmas Chapel Holiday Sing-Along
with Dr. Surber
8:05 a.m., Anchor Gym

Last Day of School Before Holiday Break

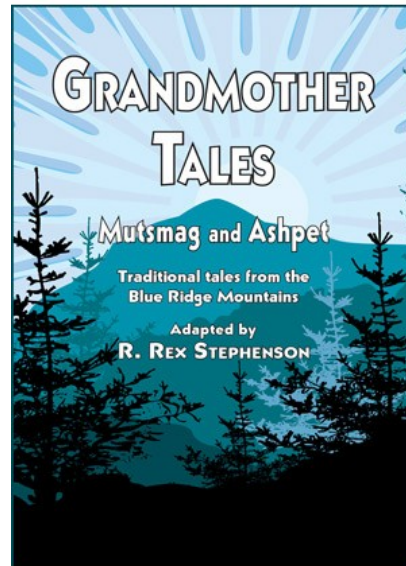
19-January 2

School Closed for Holiday Break

January

Tuesday 3: Classes Resume!

aloud and a make-and-take craft!
[Click here to RSVP.](#)



Middle School Auditions for Spring Play Grandmother Tales December 5-6, 3:10-4:30 p.m., Performing Arts Room

Open to all Middle School students. No need to
prepare anything!
First Rehearsal: Monday, Dec. 12 from 3-5 p.m. in
the Performing Arts Room
Production Dates: March 2-4
[Click here](#) for tentative rehearsal schedule.

QUICK LINKS

- [Create a Family Library Account](#)
- [Refer a Friend to GSL](#)
- [ACE: After School & Enrichment](#)
- [Lunch Service](#)
- [2022-23 Important Dates Calendar](#)
- [Preschool Handbook](#)
- [Lower & Middle School Handbook](#)

Weekly eNews Distribution

To add an email address to the eNews distribution
list, please email [Associate Director of
Communications Marci Woodmansee](#).

Contacting ACE After School Hours

To connect with ACE after school hours, call the
Auxiliary Programs line at 901.677.2245.

Annual Food Drive at GSL Through December 12

Fifth grade students invite the GSL community to participate in



the Annual Food Drive, which runs through December 12. The goal is for every participant to bring in five items!

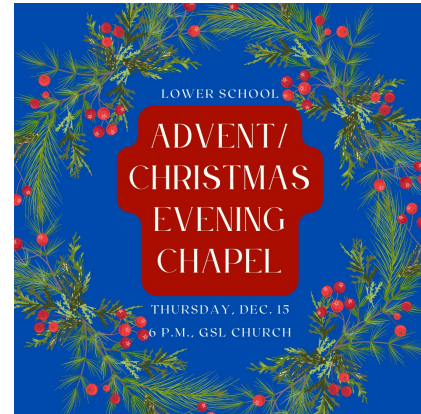
Donated items will be collected by teachers and advisors in the classrooms and will be given to the Mid-South Food Bank and GSL Church Food Pantry. New this year: In addition to gathering typical most-needed items such as canned meats, soups, peanut butter, beans, and rice, we're also accepting non-food items such as paper towels, cleaners, and personal hygiene products. **[Click here to view the food drive flyer, which includes a list of the most-needed items.](#)**

Thank you in advance for helping our community!
Questions? Email **[Felicity Letsou](#)**.

Advent/Christmas Evening Chapel, Led by Lower School

Thursday, Dec. 15, 6 p.m., GSL Church

This holiday event will feature readings, singing, and acolyting by Lower School students in a service for all of our school families to enjoy, as a way to experience GSL's weekly morning chapel custom in the evening. With organ music by Grace-St. Luke's Church Music Director Patrick Scott, trumpet by GSL SK-6th Grade Music Teacher Braden Jensen, and favorite Episcopal hymns and carols. The entire community is invited to this event; please join us!



Save the Date for the GSL Annual Anchor Auction!

Friday, April 21

Grind City Brewing Company

The Anchor Auction is the Parents' Association largest fundraiser for GSL, so please mark your calendars & make plans to attend!

We are still accepting new sponsors! If you would like to join the special group below and become an Anchor Auction Sponsor, **[click here](#)** or contact **[Kelly Martin](#)** or **[Christina Ross](#)**.

***We are thankful for our current list of generous
Anchor Auction Sponsors!***

75th Anniversary Sponsor (\$5,000)
Independent Bank

Saint Sponsor (\$2,500)

The Engbretson Center for Women, Dr. Shannon Riedley-Malone
Jim Keras Subaru
Montgomery Martin Contractors
Rachel's Flowers & Gifts

Luker Sponsor (\$1,000)

Indigo
Martin Music
Paragon Bank

Venue Sponsor (\$750)

Gerber Taylor

Catering Sponsor (\$500)

Duncan Eye
Zachary Johnston, DDS Family & Cosmetic Dentistry

***Bring Refillable Bottles;
Water Fountains Temporarily Closed***

Due to illnesses on campus at this time, we are keeping the water fountains closed. The water bottle filling stations are OPEN, so please remind your children to bring their water bottles and fill them up as needed at the filling stations. We appreciate your help and support as we work to keep everyone safe and minimize the spread of illness so our students can stay in school! Questions? [Email](#) Nurse Calzia.



[CLICK HERE TO GIVE TO GSL TODAY!](#)

