
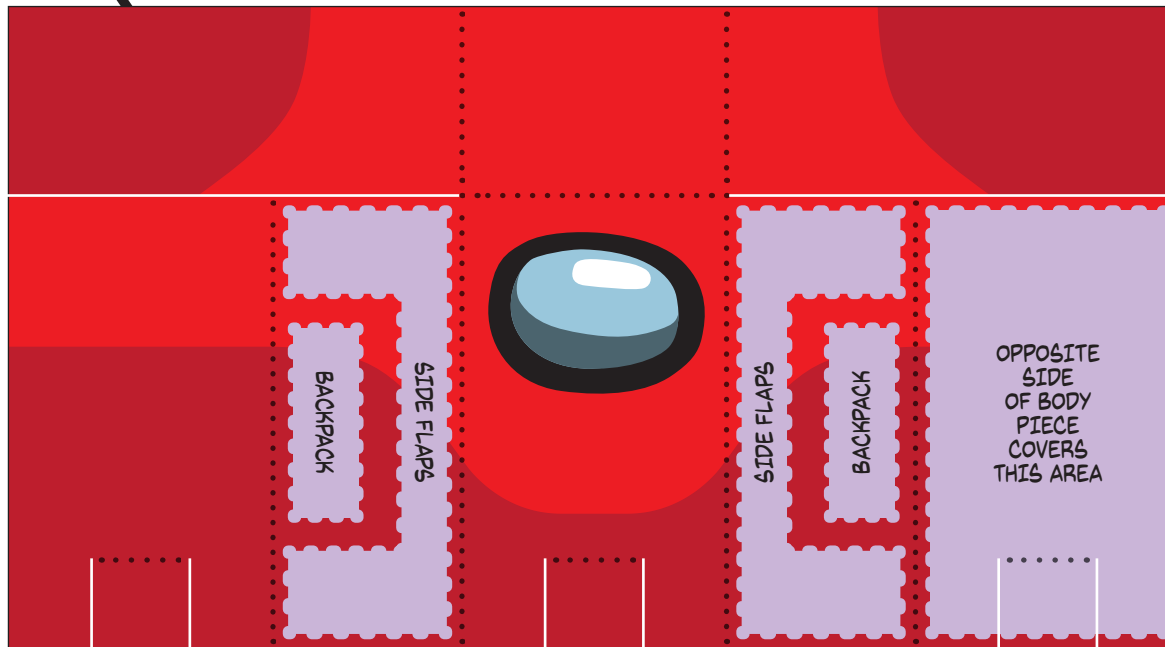


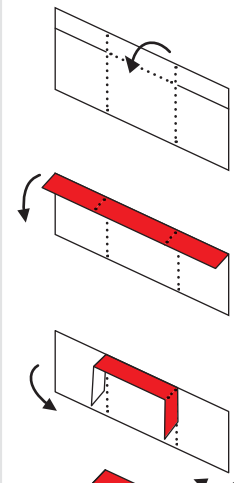
READ FIRST!

VIDEO TUTORIALS AVAILABLE ON YOUTUBE!
CAREFULLY CUT OUT ALL THE PIECES WITH SCISSORS.
PRE-CREASE ALL FOLD LINES BEFORE APPLYING GLUE.
 DOTTED LINES ARE **MOUNTAIN FOLDS!**
 ——— WHITE LINES ARE **CUT LINES!**
 **GLUE ZONES!**

This Kooky Craftables project is "fan art." The material presented consists of my illustration and paper craft engineering but it is inspired by products and/or characters that I did not invent. Not for resale.

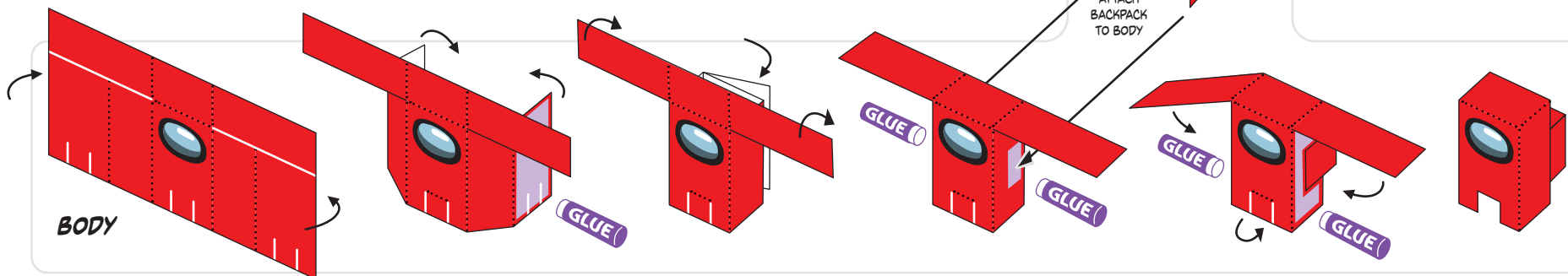


BACKPACK




"SUPER SUS" CRAFT TIP!

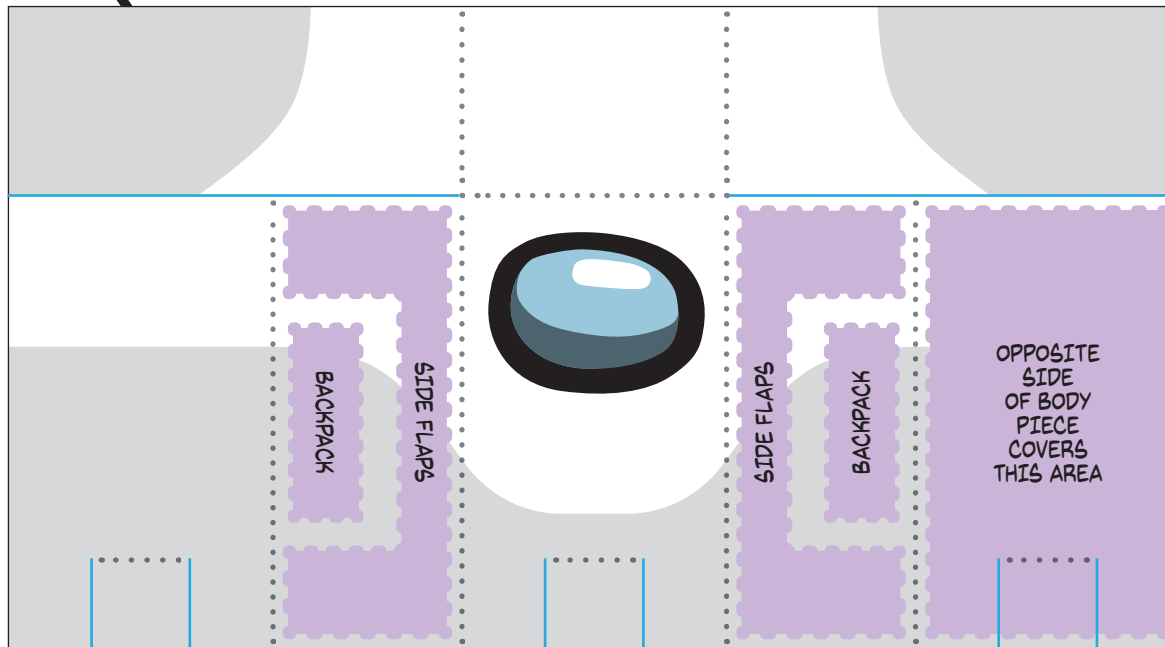
A GREAT SECRET FOR PRODUCING PERFECT FOLDS IS TO PUSH THE ROUND EDGE OF A PAPER CLIP RIGHT ON THE DOTTED LINES (USING A RULER AS A GUIDE) **BEFORE** YOU FOLD THE PAPER.



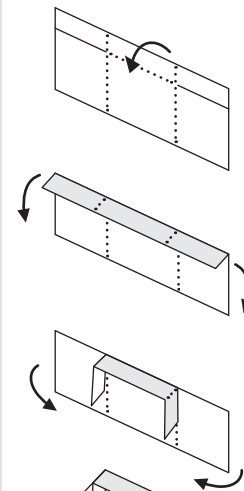
READ FIRST!

VIDEO TUTORIALS AVAILABLE ON YOUTUBE!
 CAREFULLY **CUT OUT** ALL THE PIECES WITH SCISSORS.
PRE-CREASE ALL FOLD LINES BEFORE APPLYING GLUE.
 DOTTED LINES ARE **MOUNTAIN FOLDS!**
 ——— WHITE LINES ARE **CUT LINES!**
 **GLUE ZONES!**

This Kooky Craftables project is "fan art." The material presented consists of my illustration and paper craft engineering but it is inspired by products and/or characters that I did not invent. Not for resale.



BACKPACK

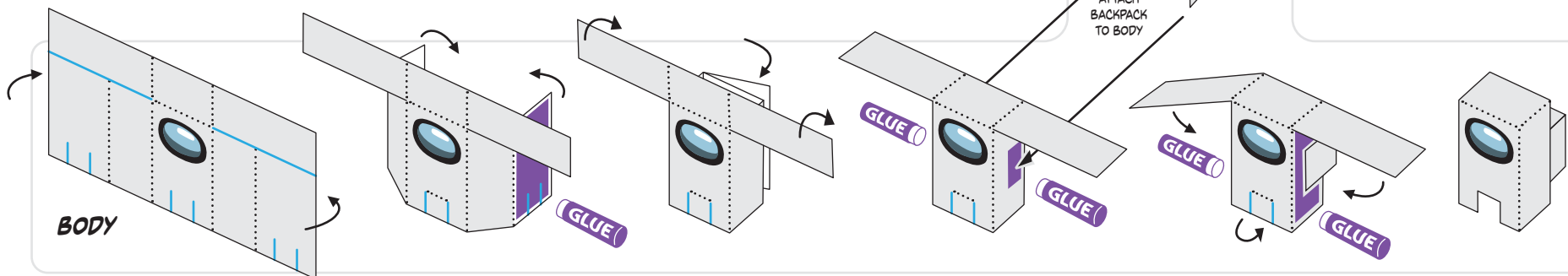


"SUPER SUS" CRAFT TIP!


A GREAT SECRET FOR PRODUCING PERFECT FOLDS IS TO PUSH THE ROUND EDGE OF A PAPER CLIP RIGHT ON THE DOTTED LINES (USING A RULER AS A GUIDE) **BEFORE** YOU FOLD THE PAPER.



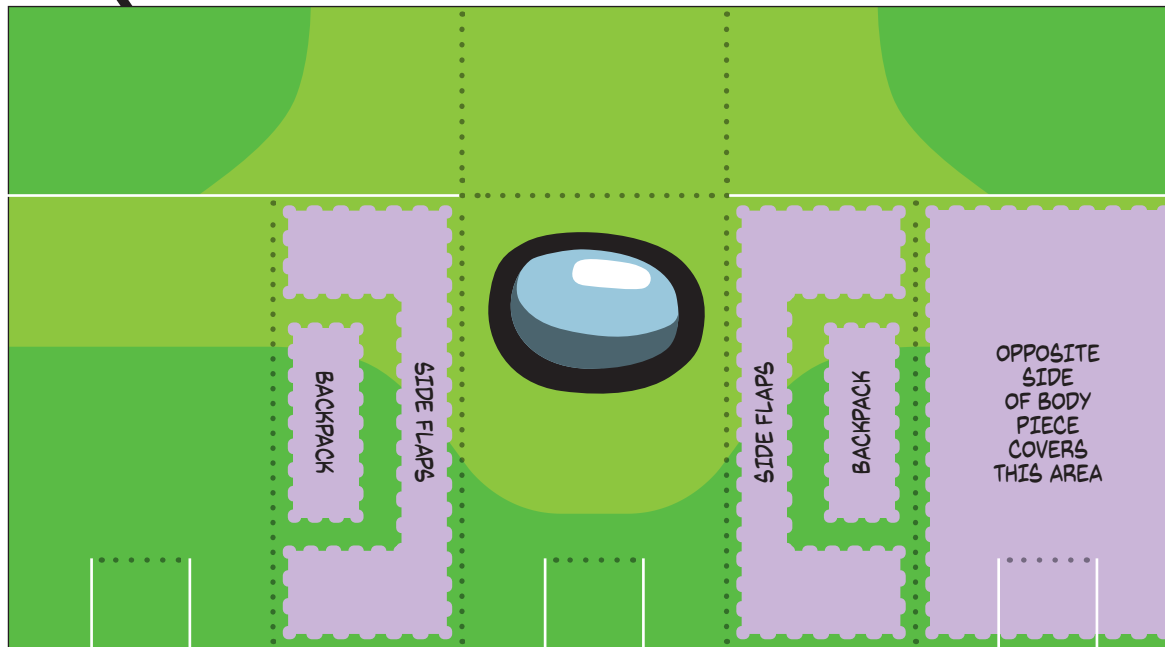
ATTACH BACKPACK TO BODY



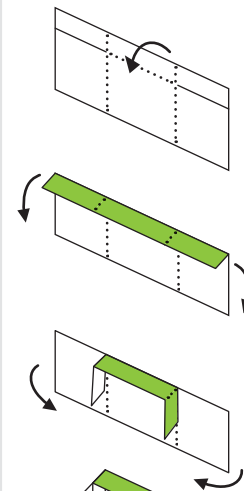
READ FIRST!

VIDEO TUTORIALS AVAILABLE ON YOUTUBE!
 CAREFULLY **CUT OUT** ALL THE PIECES WITH SCISSORS.
PRE-CREASE ALL FOLD LINES BEFORE APPLYING GLUE.
 DOTTED LINES ARE **MOUNTAIN FOLDS!**
 _____ WHITE LINES ARE **CUT LINES!**
 **GLUE ZONES!**

This Kooky Craftables project is "fan art." The material presented consists of my illustration and paper craft engineering but it is inspired by products and/or characters that I did not invent. Not for resale.



BACKPACK

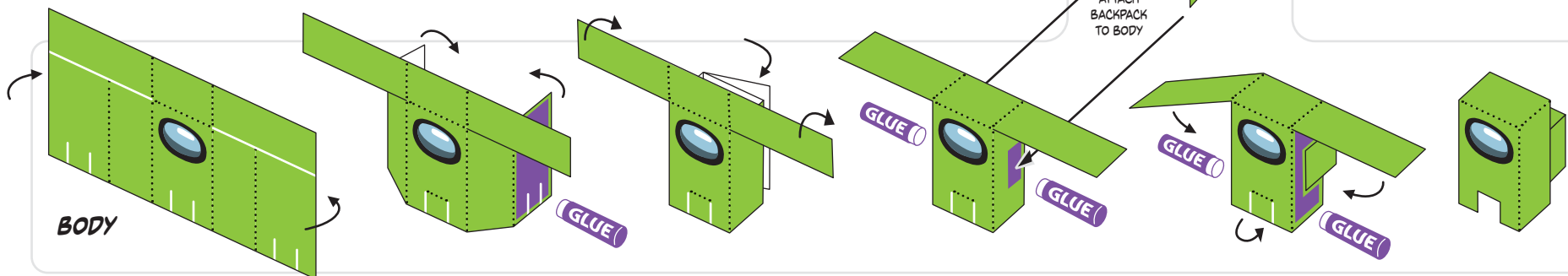


"SUPER SUS" CRAFT TIP!


A GREAT SECRET FOR PRODUCING PERFECT FOLDS IS TO PUSH THE ROUND EDGE OF A PAPER CLIP RIGHT ON THE DOTTED LINES (USING A RULER AS A GUIDE) **BEFORE** YOU FOLD THE PAPER.



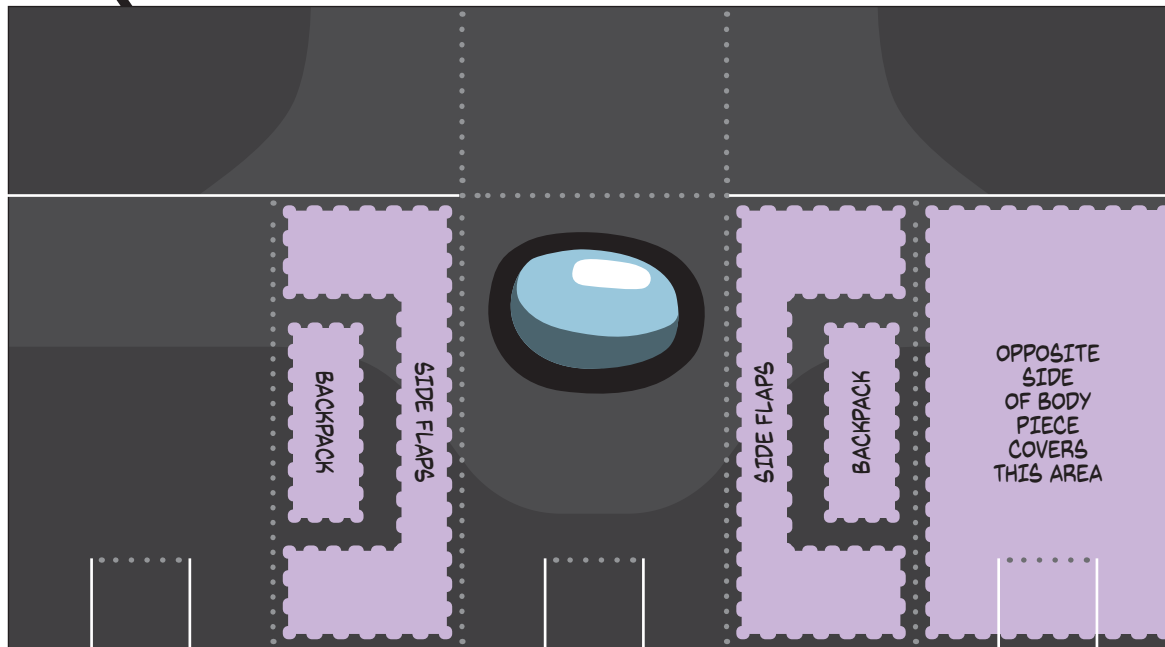
ATTACH BACKPACK TO BODY



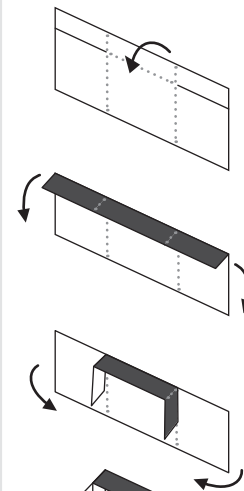
READ FIRST!

VIDEO TUTORIALS AVAILABLE ON YOUTUBE!
 CAREFULLY **CUT OUT** ALL THE PIECES WITH SCISSORS.
PRE-CREASE ALL FOLD LINES BEFORE APPLYING GLUE.
 DOTTED LINES ARE **MOUNTAIN FOLDS!**
 ——— WHITE LINES ARE **CUT LINES!**
 **GLUE ZONES!**

This Kooky Craftables project is "fan art." The material presented consists of my illustration and paper craft engineering but it is inspired by products and/or characters that I did not invent. Not for resale.

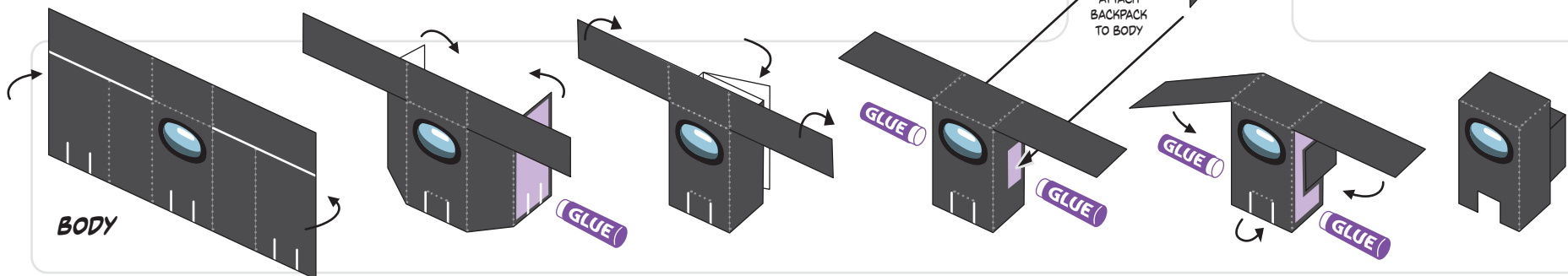


BACKPACK





"SUPER SUS" CRAFT TIP!

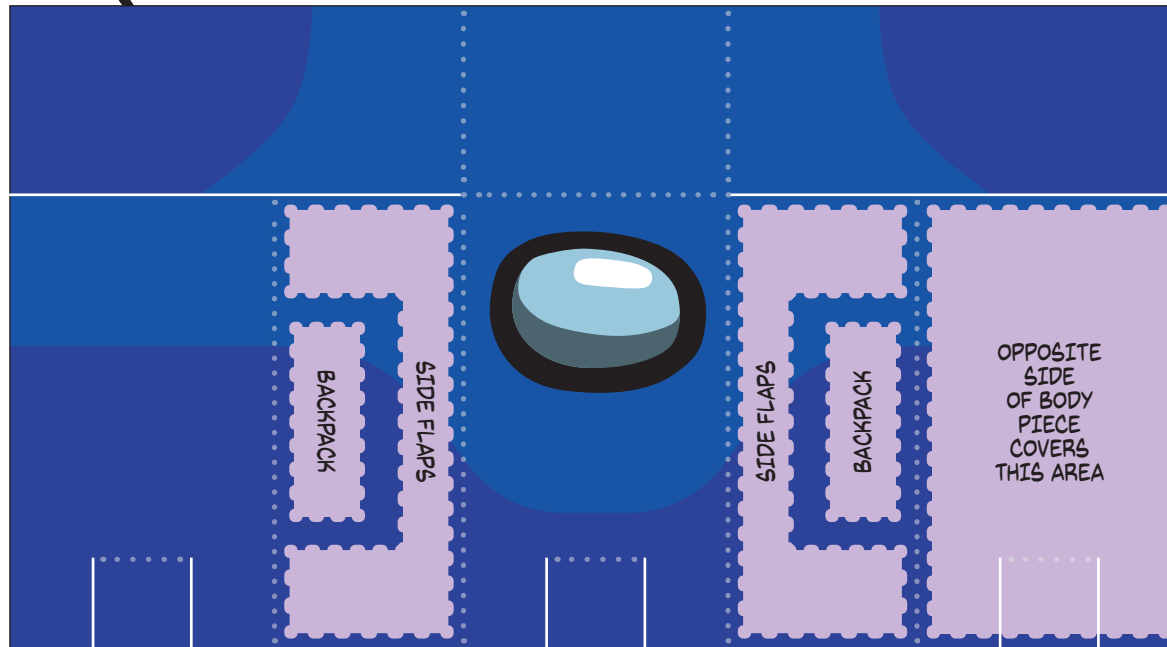
A GREAT SECRET FOR PRODUCING PERFECT FOLDS IS TO PUSH THE ROUND EDGE OF A PAPER CLIP RIGHT ON THE DOTTED LINES (USING A RULER AS A GUIDE) **BEFORE** YOU FOLD THE PAPER.



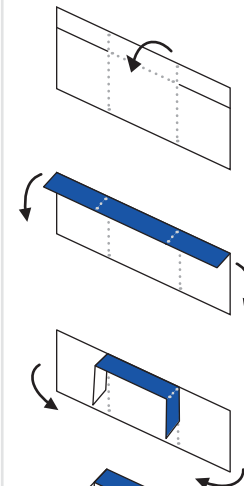
READ FIRST!

 **VIDEO TUTORIALS** AVAILABLE ON YOUTUBE!
 CAREFULLY **CUT OUT** ALL THE PIECES WITH SCISSORS.
PRE-CREASE ALL FOLD LINES BEFORE APPLYING GLUE.
 DOTTED LINES ARE **MOUNTAIN FOLDS!**
 _____ WHITE LINES ARE **CUT LINES!**
 **GLUE ZONES!**

This Kooky Craftables project is "fan art." The material presented consists of my illustration and paper craft engineering but it is inspired by products and/or characters that I did not invent. Not for resale.

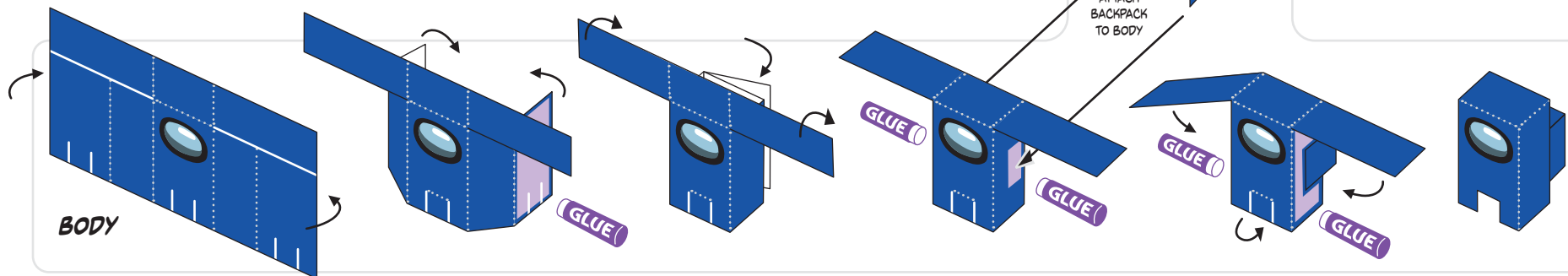
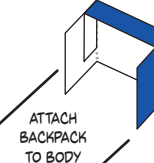


BACKPACK





"SUPER SUS" CRAFT TIP!

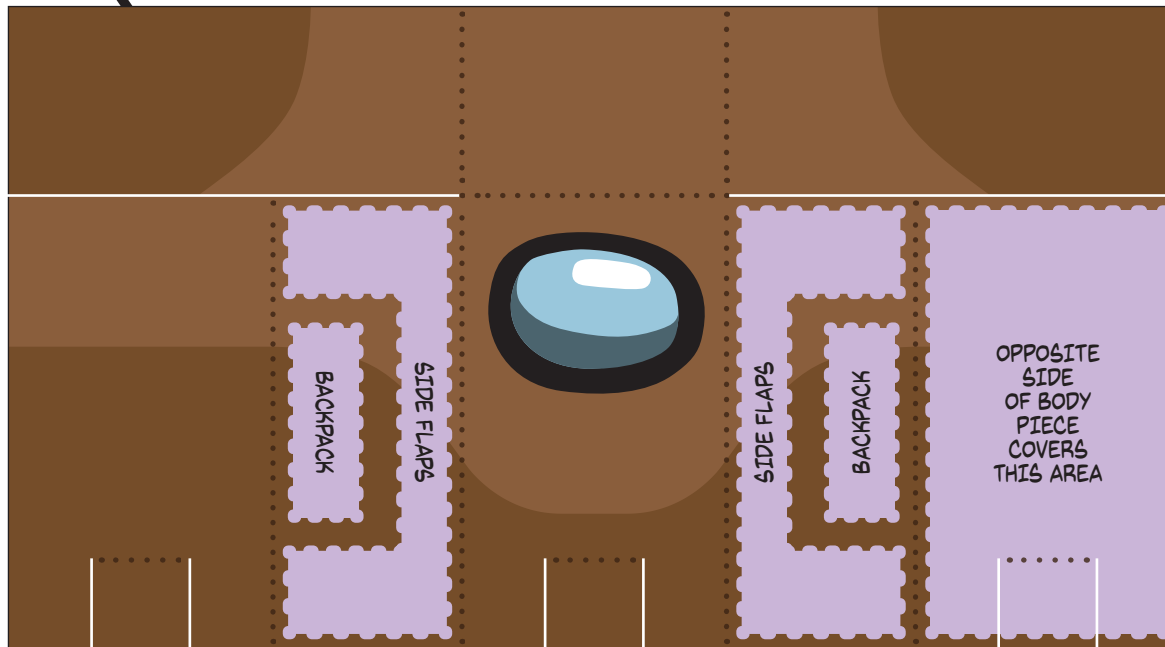
A GREAT SECRET FOR PRODUCING PERFECT FOLDS IS TO PUSH THE ROUND EDGE OF A PAPER CLIP RIGHT ON THE DOTTED LINES (USING A RULER AS A GUIDE) **BEFORE** YOU FOLD THE PAPER.



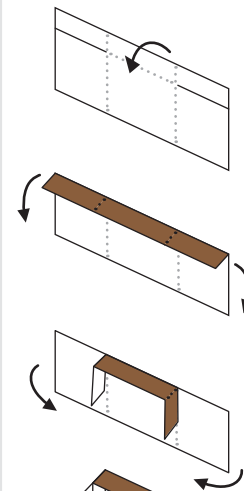
READ FIRST!

 **VIDEO TUTORIALS** AVAILABLE ON YOUTUBE!
CAREFULLY **CUT OUT** ALL THE PIECES WITH SCISSORS.
PRE-CREASE ALL FOLD LINES BEFORE APPLYING GLUE.
..... DOTTED LINES ARE **MOUNTAIN FOLDS!**
—— WHITE LINES ARE **CUT LINES!**
 **GLUE ZONES!**

This Kooky Craftables project is "fan art." The material presented consists of my illustration and paper craft engineering but it is inspired by products and/or characters that I did not invent. Not for resale.



BACKPACK

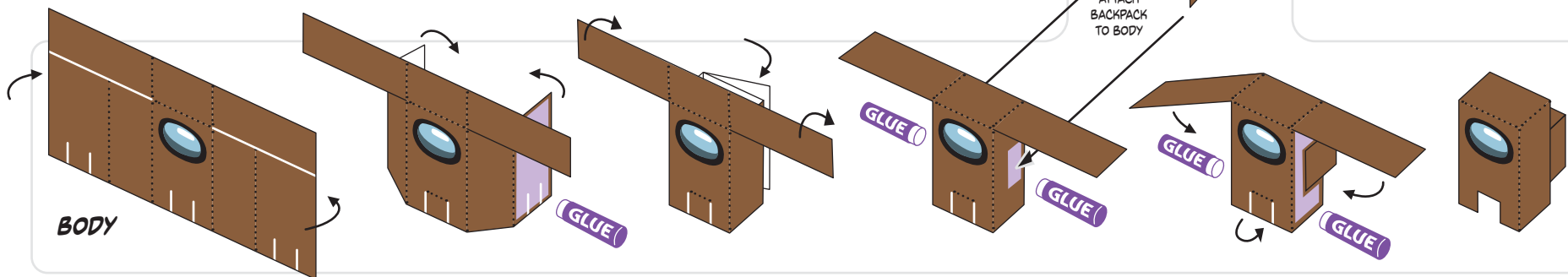


"SUPER SUS" CRAFT TIP!


A GREAT SECRET FOR PRODUCING PERFECT FOLDS IS TO PUSH THE ROUND EDGE OF A PAPER CLIP RIGHT ON THE DOTTED LINES (USING A RULER AS A GUIDE) **BEFORE** YOU FOLD THE PAPER.



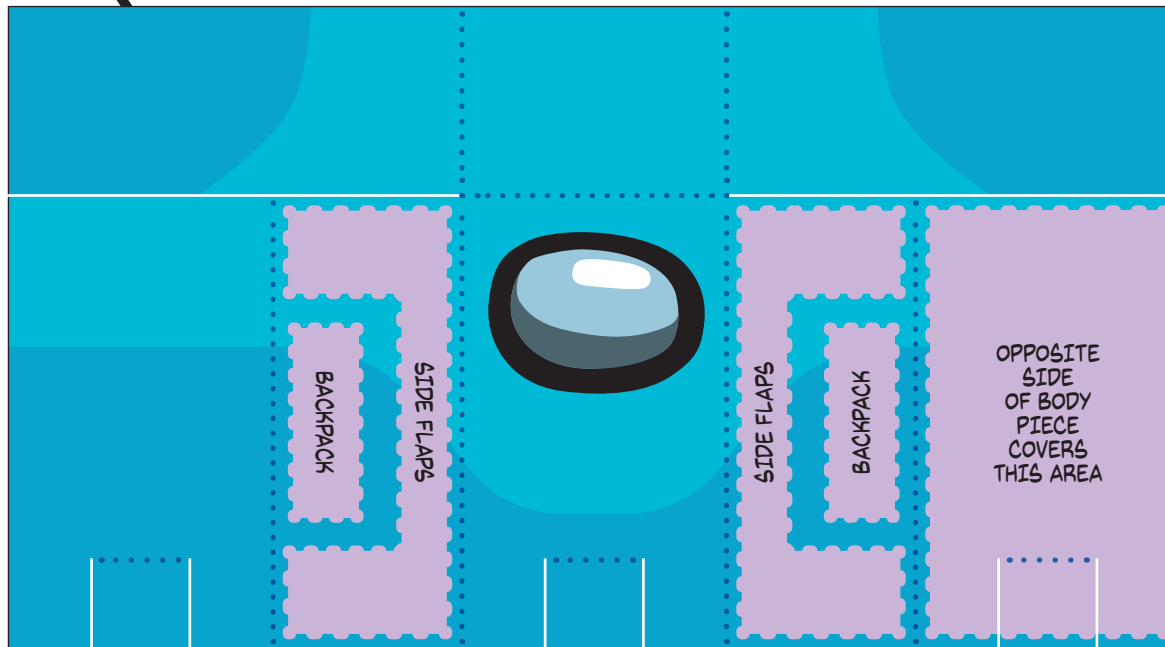
ATTACH BACKPACK TO BODY



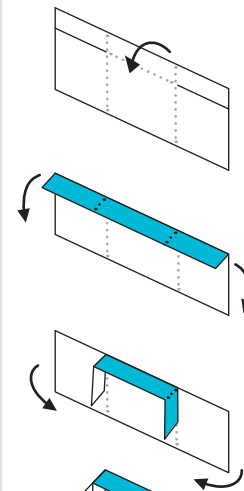
READ FIRST!

VIDEO TUTORIALS AVAILABLE ON YOUTUBE!
CAREFULLY **CUT OUT** ALL THE PIECES WITH SCISSORS.
PRE-CREASE ALL FOLD LINES BEFORE APPLYING GLUE.
..... DOTTED LINES ARE **MOUNTAIN FOLDS!**
—— WHITE LINES ARE **CUT LINES!**
 **GLUE ZONES!**

This Kooky Craftables project is "fan art." The material presented consists of my illustration and paper craft engineering but it is inspired by products and/or characters that I did not invent. Not for resale.

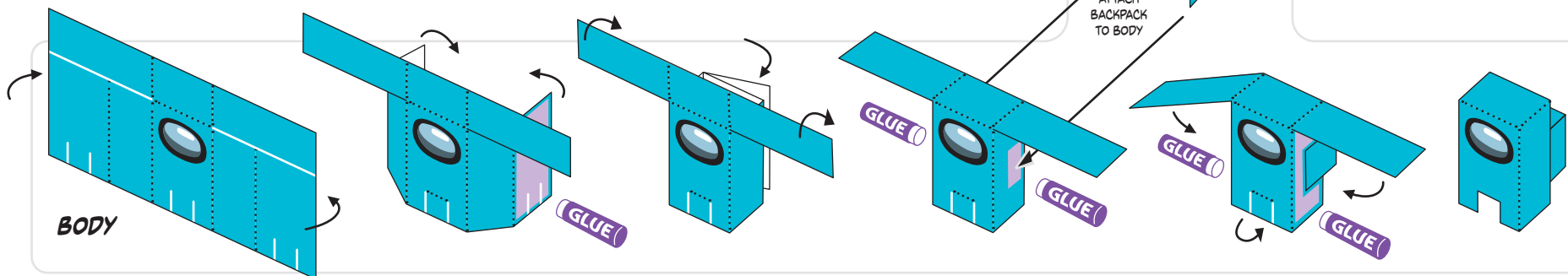


BACKPACK





"SUPER SUS" CRAFT TIP!

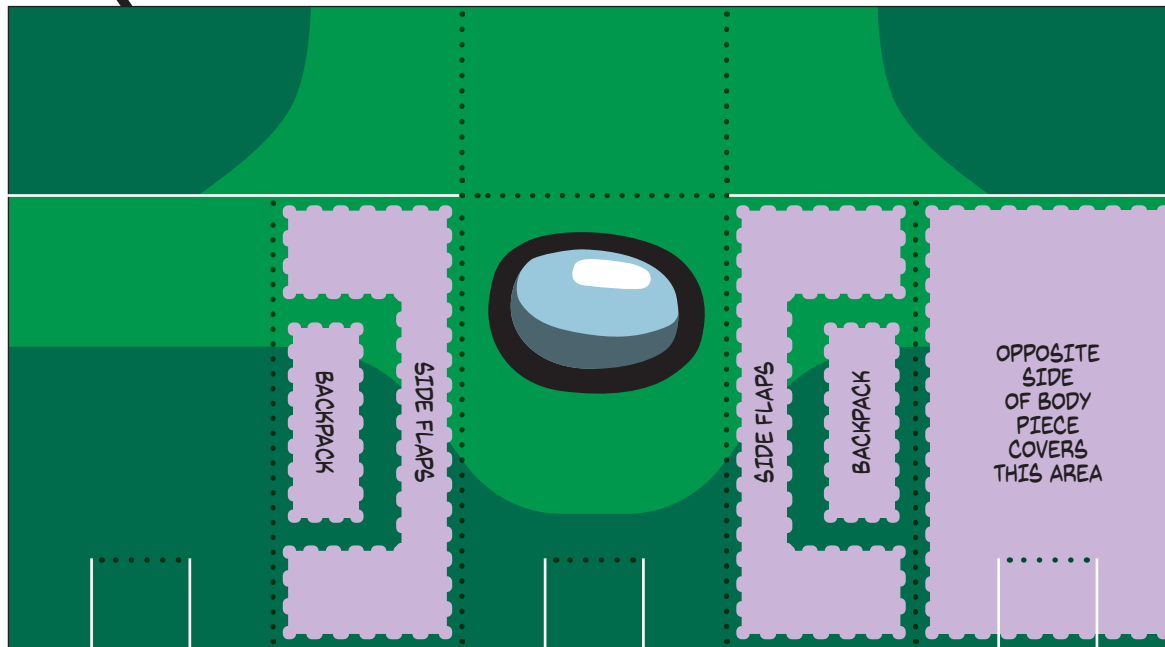
A GREAT SECRET FOR PRODUCING PERFECT FOLDS IS TO PUSH THE ROUND EDGE OF A PAPER CLIP RIGHT ON THE DOTTED LINES (USING A RULER AS A GUIDE) **BEFORE** YOU FOLD THE PAPER.



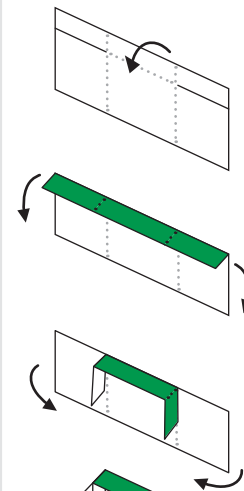
READ FIRST!

 **VIDEO TUTORIALS** AVAILABLE ON YOUTUBE!
 CAREFULLY **CUT OUT** ALL THE PIECES WITH SCISSORS.
PRE-CREASE ALL FOLD LINES BEFORE APPLYING GLUE.
 DOTTED LINES ARE **MOUNTAIN FOLDS!**
 _____ WHITE LINES ARE **CUT LINES!**
 **GLUE ZONES!**

This Kooky Craftables project is "fan art." The material presented consists of my illustration and paper craft engineering but it is inspired by products and/or characters that I did not invent. Not for resale.



BACKPACK

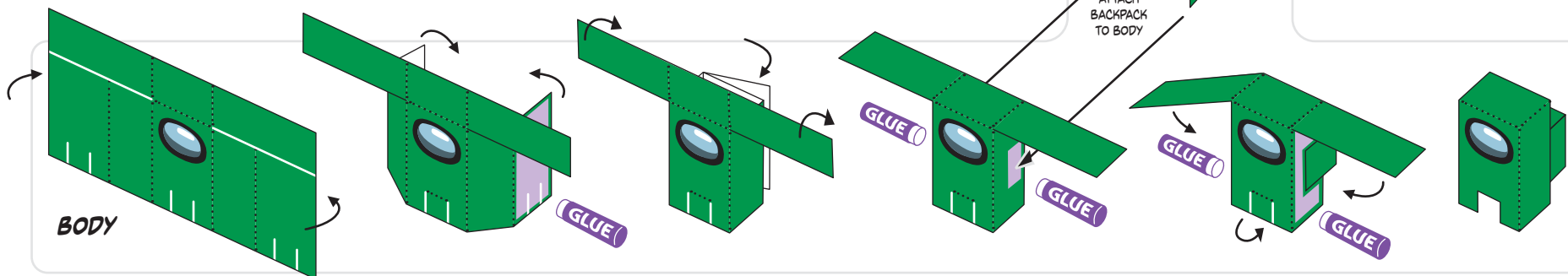


"SUPER SUS" CRAFT TIP!



A GREAT SECRET FOR PRODUCING PERFECT FOLDS IS TO PUSH THE ROUND EDGE OF A PAPER CLIP RIGHT ON THE DOTTED LINES (USING A RULER AS A GUIDE) **BEFORE** YOU FOLD THE PAPER.



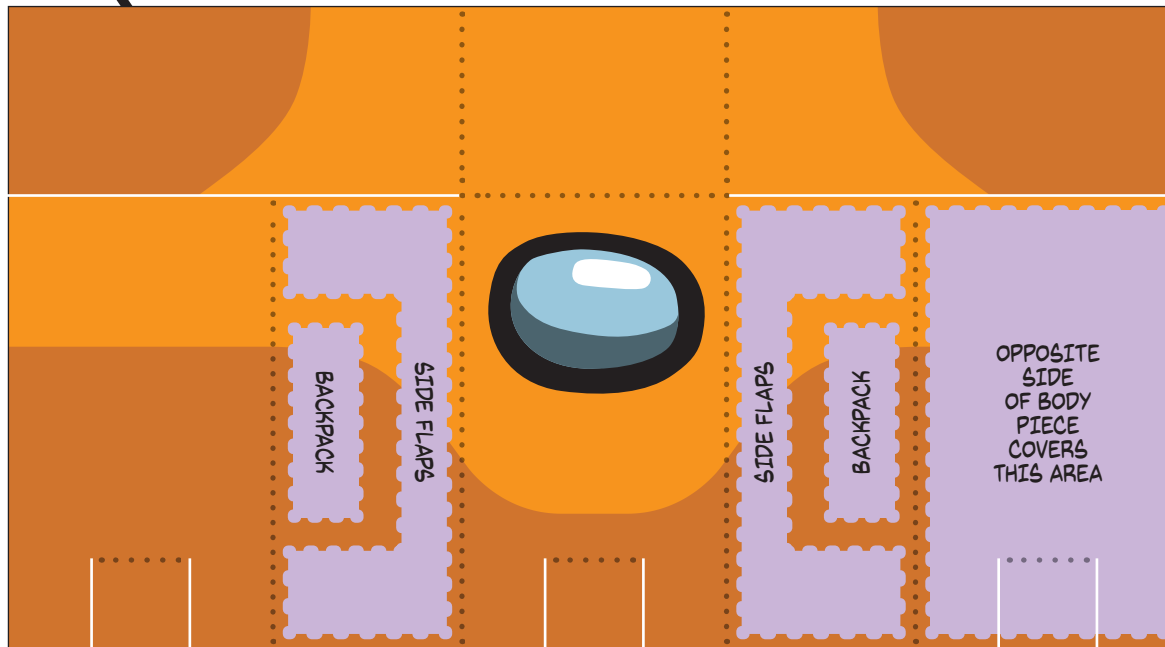
ATTACH BACKPACK TO BODY



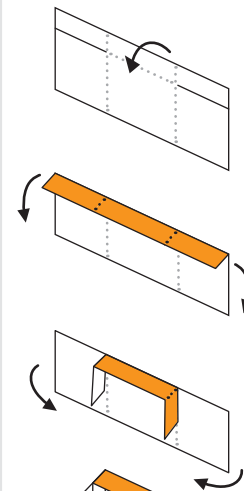
READ FIRST!

 **VIDEO TUTORIALS** AVAILABLE ON YOUTUBE!
CAREFULLY **CUT OUT** ALL THE PIECES WITH SCISSORS.
PRE-CREASE ALL FOLD LINES BEFORE APPLYING GLUE.
..... DOTTED LINES ARE **MOUNTAIN FOLDS!**
—— WHITE LINES ARE **CUT LINES!**
 **GLUE ZONES!**

This Kooky Craftables project is "fan art." The material presented consists of my illustration and paper craft engineering but it is inspired by products and/or characters that I did not invent. Not for resale.



BACKPACK

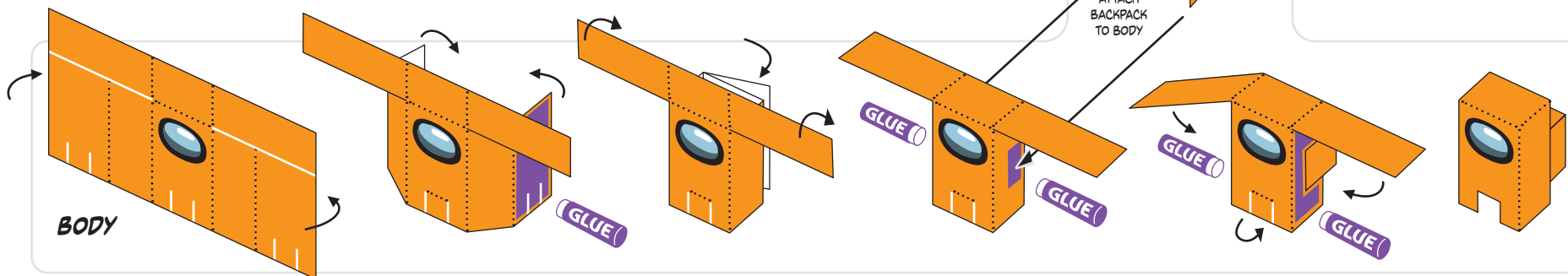


"SUPER SUS" CRAFT TIP!


A GREAT SECRET FOR PRODUCING PERFECT FOLDS IS TO PUSH THE ROUND EDGE OF A PAPER CLIP RIGHT ON THE DOTTED LINES (USING A RULER AS A GUIDE) **BEFORE** YOU FOLD THE PAPER.



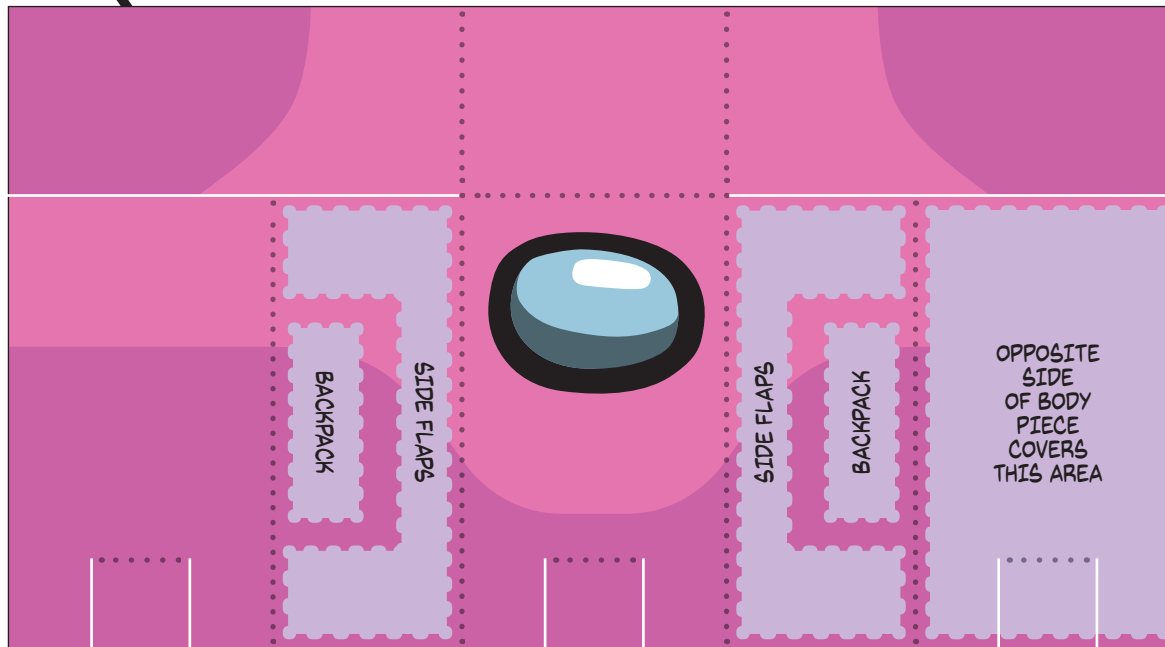
ATTACH BACKPACK TO BODY



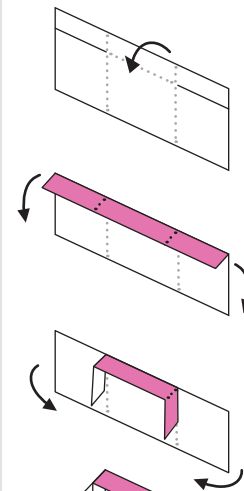
READ FIRST!

VIDEO TUTORIALS AVAILABLE ON YOUTUBE!
CAREFULLY **CUT OUT** ALL THE PIECES WITH SCISSORS.
PRE-CREASE ALL FOLD LINES BEFORE APPLYING GLUE.
..... DOTTED LINES ARE **MOUNTAIN FOLDS!**
—— WHITE LINES ARE **CUT LINES!**
 **GLUE ZONES!**

This Kooky Craftables project is "fan art." The material presented consists of my illustration and paper craft engineering but it is inspired by products and/or characters that I did not invent. Not for resale.

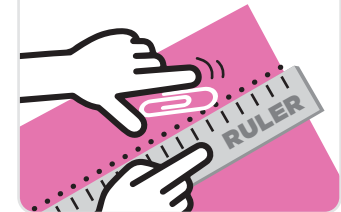


BACKPACK

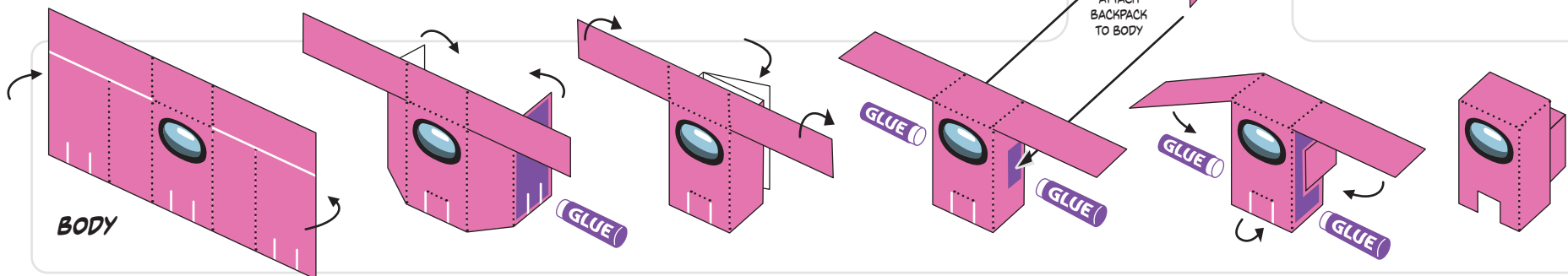


"SUPER SUS" CRAFT TIP!


A GREAT SECRET FOR PRODUCING PERFECT FOLDS IS TO PUSH THE ROUND EDGE OF A PAPER CLIP RIGHT ON THE DOTTED LINES (USING A RULER AS A GUIDE) **BEFORE** YOU FOLD THE PAPER.



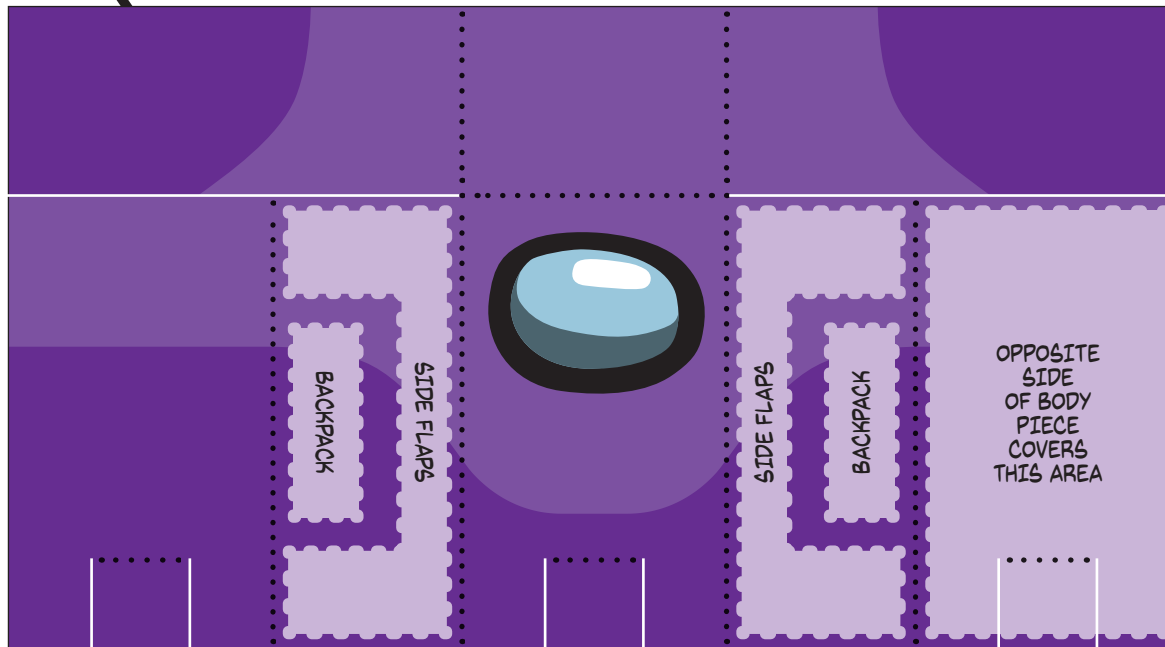
ATTACH BACKPACK TO BODY



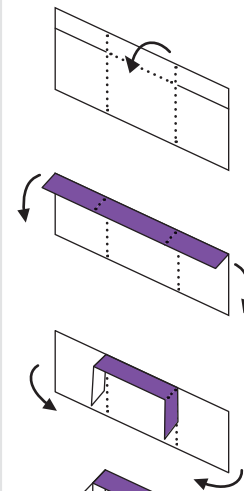
READ FIRST!

VIDEO TUTORIALS AVAILABLE ON YOUTUBE!
 CAREFULLY **CUT OUT** ALL THE PIECES WITH SCISSORS.
PRE-CREASE ALL FOLD LINES BEFORE APPLYING GLUE.
 DOTTED LINES ARE **MOUNTAIN FOLDS!**
 ——— WHITE LINES ARE **CUT LINES!**
 **GLUE ZONES!**

This Kooky Craftables project is "fan art." The material presented consists of my illustration and paper craft engineering but it is inspired by products and/or characters that I did not invent. Not for resale.

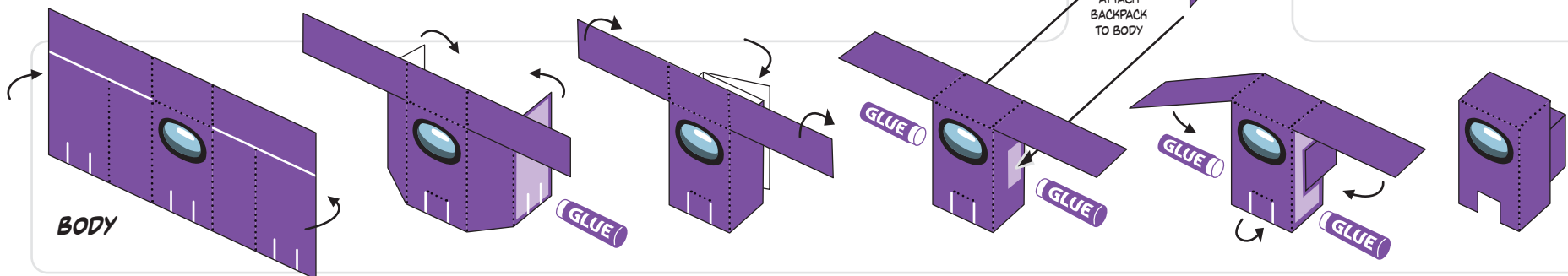


BACKPACK

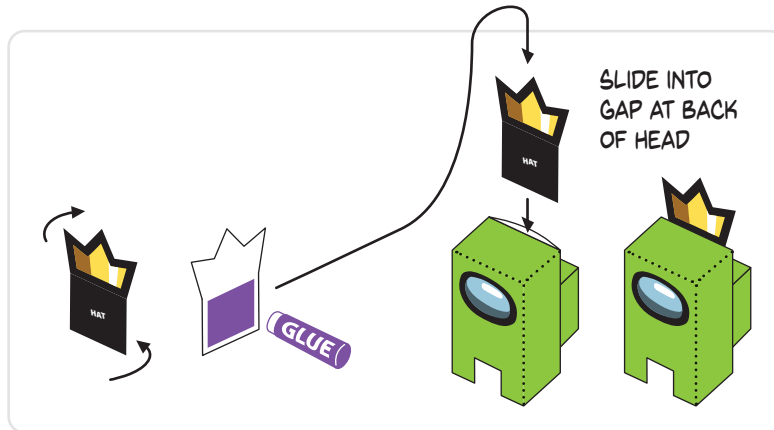


"SUPER SUS" CRAFT TIP!

A GREAT SECRET FOR PRODUCING PERFECT FOLDS IS TO PUSH THE ROUND EDGE OF A PAPER CLIP RIGHT ON THE DOTTED LINES (USING A RULER AS A GUIDE) **BEFORE** YOU FOLD THE PAPER.



READ FIRST!





Get free paper craft in your INBOX!

Subscribe to the monthly e-newsletter at KookyCraftables.com

Paper craft books by the creator of KookyCraftables.com

Papercuttables

Build 15 unique Papercuttables, and become a crafty participant in an exciting action-packed story! Race against time in order to save your creations from a dark and mysterious force set out to destroy the land of the Papercuttables once and for all!

Papercuttables is an 80-page paper craft book by David Landis and published by SCHOLASTIC – the largest publisher of children's books in the world!



papercuttables.com

Desktop Gremlins Vol. 1

Build 20 astounding paper sculptures! Desktop Gremlins are paper craft monsters, mischief-makers and magical creatures that are easy to build, fun to display, and awesome to share! Each character has a different story and extraordinary reasons to be sitting on your desk.


Desktop Gremlins is a 96-page paper craft book by David Landis.

desktopgremlins.com

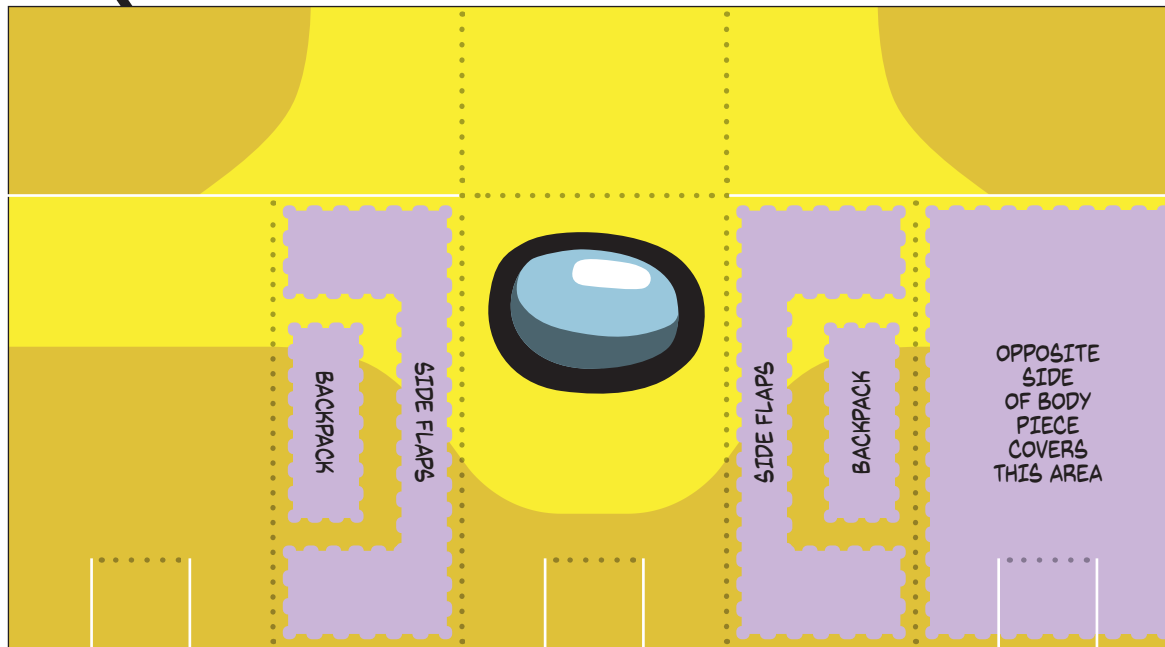
Learn more at landisproductions.com



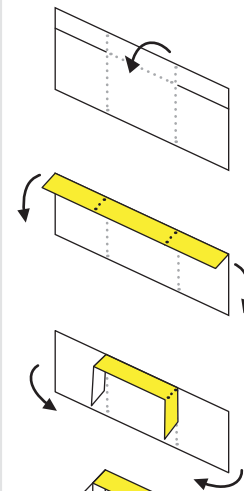
READ FIRST!

VIDEO TUTORIALS AVAILABLE ON YOUTUBE!
 CAREFULLY **CUT OUT** ALL THE PIECES WITH SCISSORS.
PRE-CREASE ALL FOLD LINES BEFORE APPLYING GLUE.
 DOTTED LINES ARE **MOUNTAIN FOLDS!**
 _____ WHITE LINES ARE **CUT LINES!**
 **GLUE ZONES!**

This Kooky Craftables project is "fan art." The material presented consists of my illustration and paper craft engineering but it is inspired by products and/or characters that I did not invent. Not for resale.



BACKPACK



"SUPER SUS" CRAFT TIP!

A GREAT SECRET FOR PRODUCING PERFECT FOLDS IS TO PUSH THE ROUND EDGE OF A PAPER CLIP RIGHT ON THE DOTTED LINES (USING A RULER AS A GUIDE) **BEFORE** YOU FOLD THE PAPER.



ATTACH BACKPACK TO BODY

