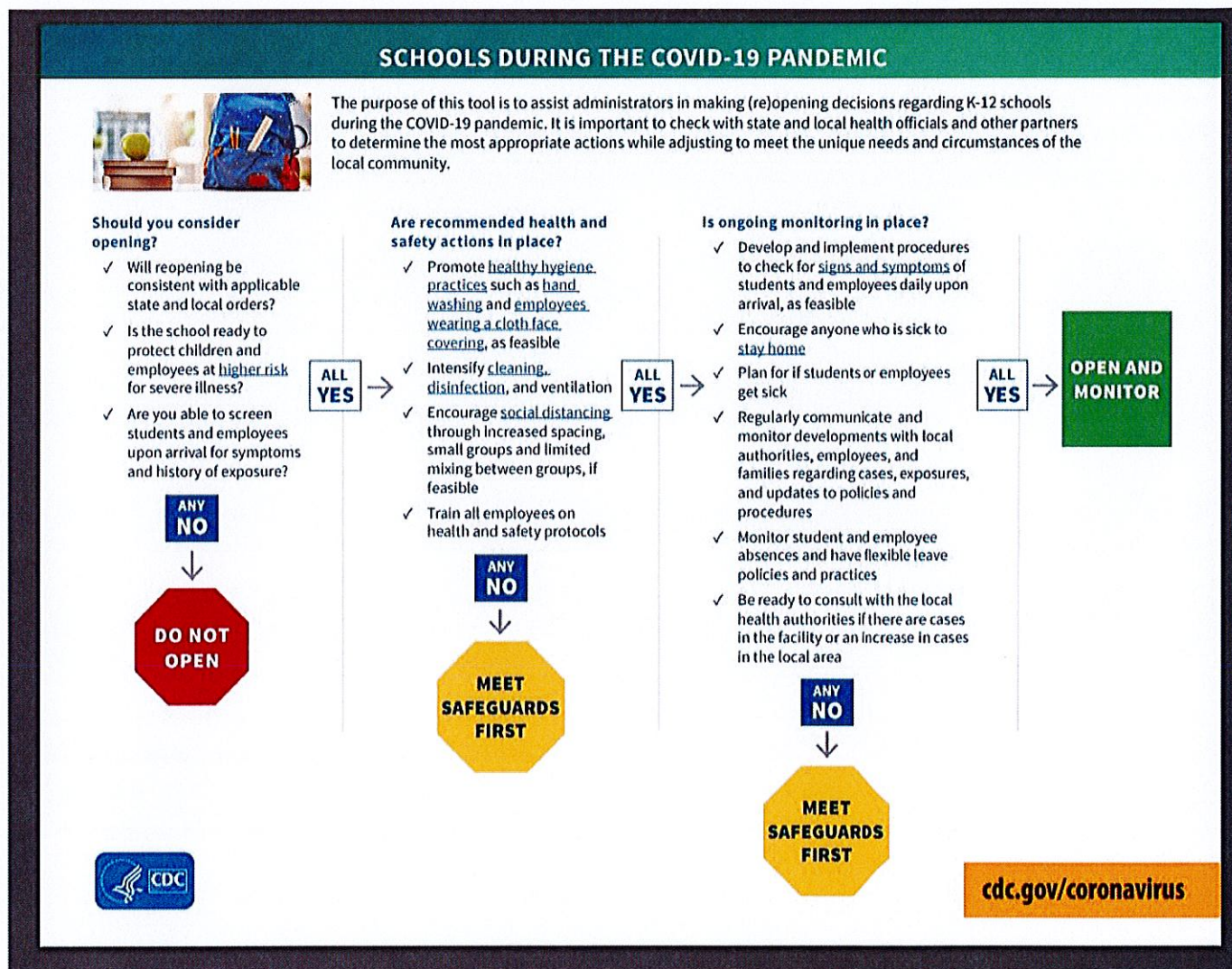




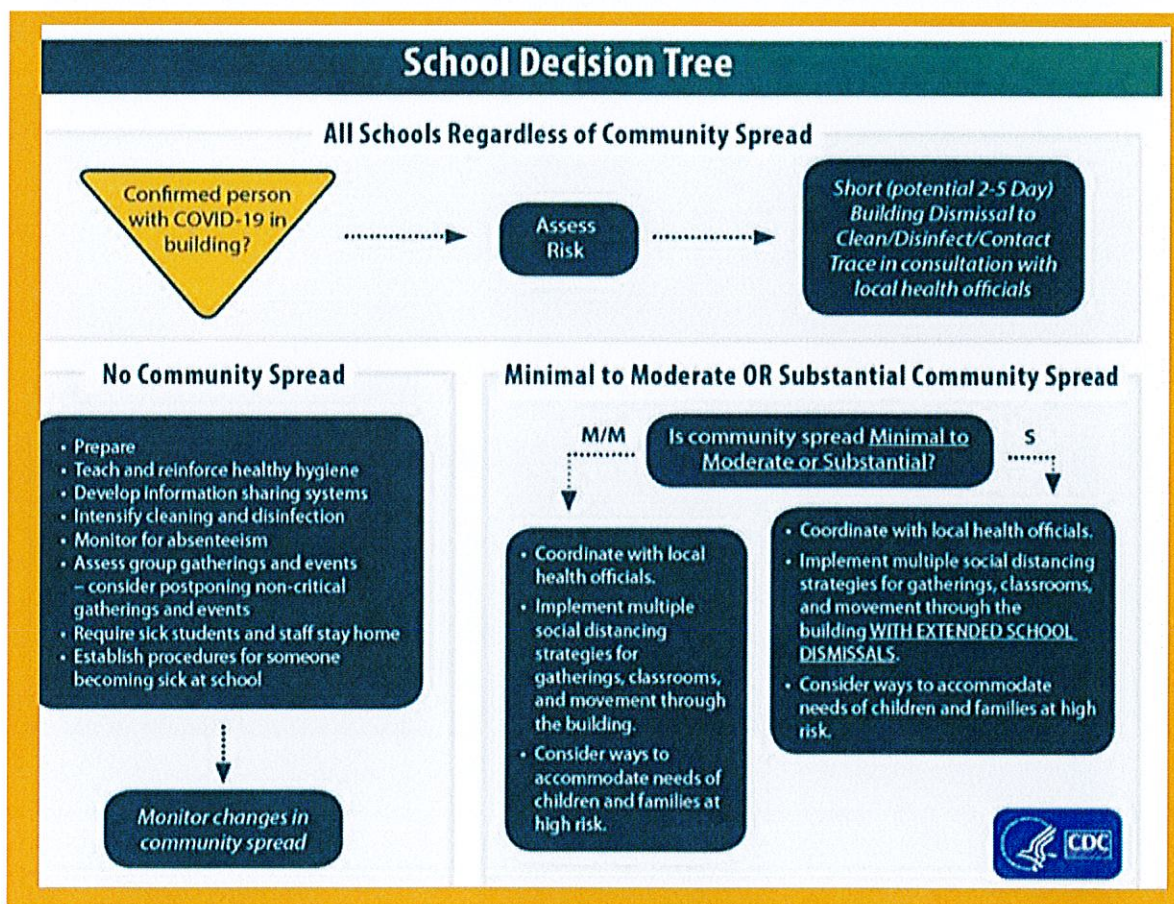
Academic Preparation for 2020-2021 School Year

CDC Guidelines for Schools

All information subject to change relative to changes in CDC, SD Dept. of Health, SD Dept. of Education, and American Academy of Pediatrics guidelines.

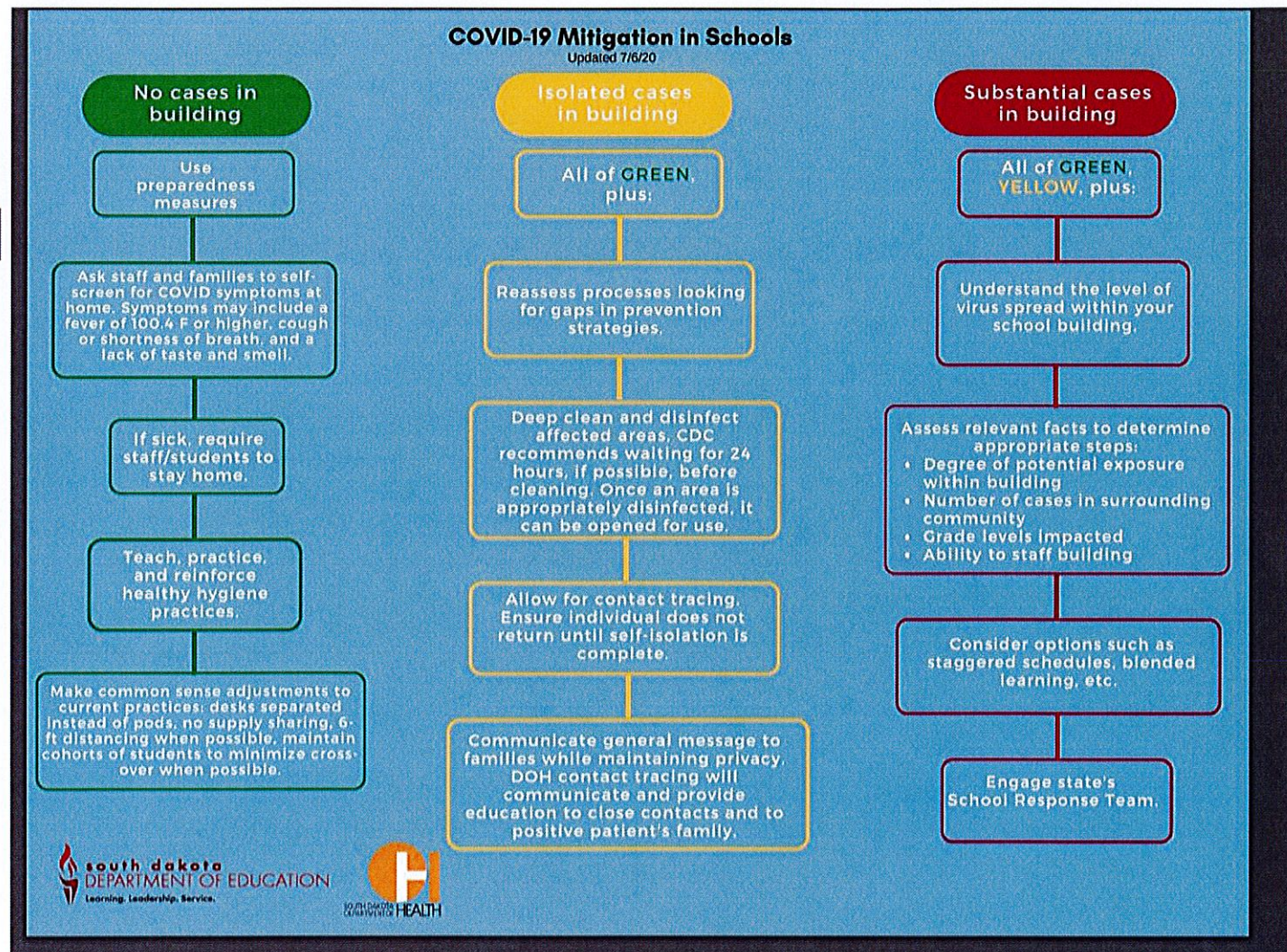


CDC Guidelines for Schools – Decision Tree



SD DOE Starting Well Toolkit

All information subject to change relative to changes in CDC, SD Dept. of Health, SD Dept. of Education, and American Academy of Pediatrics guidelines.



SD DOE Starting Well Toolkit

All information subject to change relative to changes in CDC, SD Dept. of Health, SD Dept. of Education, and American Academy of Pediatrics guidelines.

COVID-19 School Scenarios

Planning for the school year under multiple conditions

Prepared by the South Dakota Department of Health - Revised July 7, 2020



Scenario One: No active cases in your community, and no cases in your school building

The South Dakota Departments of Health and Education recommend that school takes place with appropriate preparedness measures (e.g., requiring students/staff who are sick to stay home; teaching and reinforcing healthy hygiene practices; cleaning and disinfection efforts).

Scenario Two: Active cases in your community, but no cases in your school buildings

The South Dakota Departments of Health and Education recommend that school takes place with appropriate preparedness measures (e.g., requiring students/staff who are sick to stay home; teaching and reinforcing healthy hygiene practices; cleaning and disinfection efforts).

Scenario Three: Student or staff member identified by Department of Health as close contact of a positive COVID-19 case outside of the school community

The South Dakota Departments of Health and Education recommend that school should continue with appropriate preparedness measures in place.

Scenario Four: Active case is identified in one of your school buildings

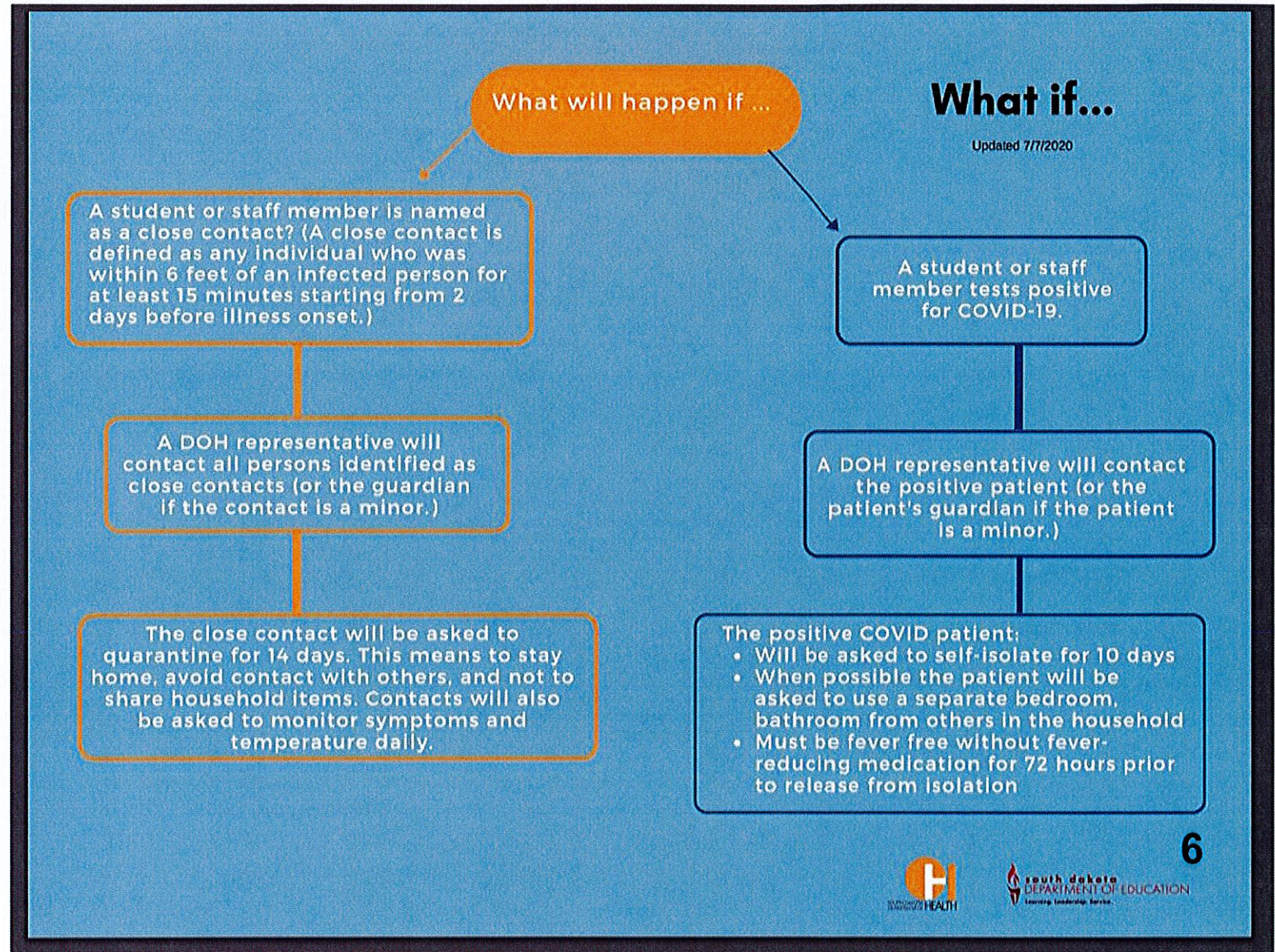
The South Dakota Departments of Health and Education recommend that school officials reassess processes - looking for gaps in prevention strategies. In the short-term, the Centers for Disease Control and Prevention (CDC) recommends closing off areas used by the sick person and waiting 24 hours (if feasible) before cleaning and disinfecting. Once area is appropriately disinfected, it can be opened for use.

Scenario Five: Multiple active cases identified in your buildings at the same time

The South Dakota Departments of Health and Education recommend that school officials review relevant data to understand level of virus spread within the school building and conduct a risk/benefit analysis of factors such as degree of potential exposure within building; case trends in surrounding community; grade levels impacted; remote learning options; scheduling options; ability to staff buildings, etc. in determining the next steps. School leaders can request technical assistance from the DOH/DOE School Response Team if desired.

SD DOE Starting Well Toolkit

All information subject to change relative to changes in CDC, SD Dept. of Health, SD Dept. of Education, and American Academy of Pediatrics guidelines.



GREEN PHASE

A school reopening under the green phase will allow all students and staff to return to five days per week of face-to-face instruction with health and safety precautions following CDC and South Dakota Department of Health Guidelines.

All information subject to change relative to changes in CDC, SD Dept. of Health, SD Dept. of Education, and American Academy of Pediatrics guidelines.

Social Distancing and Other Safety Protocols

- All students will be provided a tri-fold, plexiglass desk shield.
- Seating will be assigned for each situation throughout the day.
- Surfaces will be disinfected as needed between sessions.
- Water fountains will be shut down; students will be able to use fountain touchless fill feature for water bottles.
- Children will be spread out as much as possible and given alternative space when needed.
- Masks and face shield will be recommended where appropriate for all students and staff while in the school building.
- Non-essential visitors will be restricted: limiting volunteers, parents, presenters, and outside organizations.
- Any visitors will stay in the entryway of the respective building.
- Traffic in the hallway will be one direction; masks will continue to be encouraged during passing time.
- Parent meetings will be conducted virtually whenever possible.
- Students not allowed in the building prior to 8am unless prior arrangements have been made with teacher/administrator.
- Any food/treats intended to be shared must be pre-packaged (manufactured) and individually wrapped.

Monitoring Students and Staff

- Encourage daily at-home temperature checks.
- Provide screening checklist to families and staff for at-home health checks.
- Instruct students and staff to stay home if they are sick.
- Students or staff who present with a fever will be asked to return home for observation by a family member. Students and staff may return to school if fever free for 72 hours (without using fever reducing medication) and/or granted clearance from a medical provider.
- Have a 10-day “Stay Ay Home” order for any student or staff testing positive for Covid or medical clearance from a physician.
- Any person returning to school after experiencing a confirmed case of COVID-19 must have a health professional’s (Department of Health or medical provider) acknowledgement that returning to school is safe for both the individual who recovered and others in the building.

All information subject to change relative to changes in CDC, SD Dept. of Health, SD Dept. of Education, and American Academy of Pediatrics guidelines.

Cleaning, Sanitizing, and Disinfecting

- **Consistent cleaning cycle for high frequency areas, door knobs, handrails, desks, restrooms, fountains, etc.**
- **Disinfectant cleaner provided to each classroom to use as needed.**
- **Frequently scheduled hand washing or use of in-classroom hand sanitizer.**
- **Buses to be disinfected twice daily.**
- **Signage to be posted throughout the facilities.**
- **Hand sanitizers available when students enter the building at every door and in every classroom.**
- **Students will be directed to use sanitizer upon entering each room.**
- **Students will sanitize desks and seating area prior to leaving the room.**

All information subject to change relative to changes in CDC, SD Dept. of Health, SD Dept. of Education, and American Academy of Pediatrics guidelines.

Hygiene Education

- Display poster guidance of proper hygiene practices in classrooms, restrooms, and halls.
- Instruct students the first day about proper hygiene practices and reinforce throughout the year.
- Train staff on proper hygiene and cleaning procedures.
- Use school announcements to include training and reminders on hand washing and best practices.
- Provide all students access hand sanitizers when entering district transportation and/or buildings.
- Ensure all students either have their own materials (i.e. computers, calculators, etc.) or shared devices are cleaned between uses.

All information subject to change relative to changes in CDC, SD Dept. of Health, SD Dept. of Education, and American Academy of Pediatrics guidelines.

Physical Education Classes/ Recess

Middle School/High School:

- Weather permitting, all physical education classes will be conducted outdoors and all equipment will be cleaned before/after use.
- All activities will be designed and implemented to maintain social distancing guidelines.
- Access to locker rooms will be restricted (details to be determined).

Elementary School:

- Weather permitting, all physical education classes will be conducted outdoors and all equipment will be cleaned before/after use.
- All activities will be designed and implemented to maintain social distancing guidelines.
- Limit one classroom at the playground at a time.
- Playground will be routinely cleaned.

Music Education Classes

- To be determined pending additional guidelines

All information subject to change relative to changes in CDC, SD Dept. of Health, SD Dept. of Education, and American Academy of Pediatrics guidelines.

Lunch

- **Lunch – To be determined; limited number at table (4) – students to use tri-fold desk shields.**
- **Details to be determined pending additional guidelines**

All information subject to change relative to changes in CDC, SD Dept. of Health, SD Dept. of Education, and American Academy of Pediatrics guidelines.

Transportation

- Parents and students will have the option to utilize private transportation if possible.
- All students will be encouraged to use hand sanitizer when entering school transportation.
- Members of the household will be encouraged to sit together on school transportation when possible.
- Students are recommended to wear a mask when using school transportation.
- Students getting picked up by private transportation will go to the proper drop-off/pick-up zone. Parents/family members will stay in their vehicles. Parents may be asked to notify the school if student(s) will be picked up by private transportation.
- Student dismissal will be staggered within and between schools.
- Students will be encourage to enter and exit the building using the nearest appropriate entrance.
- Bus windows may be opened if weather allows.
- Hand sanitizer will be available on the bus.

All information subject to change relative to changes in CDC, SD Dept. of Health, SD Dept. of Education, and American Academy of Pediatrics guidelines.

Attendance Policies

- **Students and/or parents will be expected to stay in communication with instructors if out for any period of time and all work needs to be made up in a timely manner.**
- **Other attendance specifications to be determined.**

All information subject to change relative to changes in CDC, SD Dept. of Health, SD Dept. of Education, and American Academy of Pediatrics guidelines.

Protecting Students and Staff at Higher Risk

- Encourage masks and face shields where appropriate for all students and staff while in the school building.
- Staff concerns will be addressed on a case-by-case basis.
- Unique safety protocols for students with complex needs or other vulnerable populations will be addressed on a case-by-case basis.
- Appropriate accommodations will be made to fully support safety and learning.
- If parent/guardian chooses to have child learn from home, the child will be enrolled in remote learning through MobyMax (JK-5) or Edgenuity (grades 6-12) for the entire semester.

All information subject to change relative to changes in CDC, SD Dept. of Health, SD Dept. of Education, and American Academy of Pediatrics guidelines.

YELLOW PHASE

If the district is transitioned to the yellow phase, a hybrid model of instruction will be utilized such as a model where Group A students attending two days per week (Mondays and Tuesdays) and Group B students attending two days (Thursdays and Fridays) with Wednesdays and days not in school utilizing remote learning. This is to allow for greater social distancing.

This model will utilize portions of the Green Phase plans along with additional health and safety precautions.

All information subject to change relative to changes in CDC, SD Dept. of Health, SD Dept. of Education, and American Academy of Pediatrics guidelines.

Hybrid Learning Model

Specifics to be determined --- potential sample model:

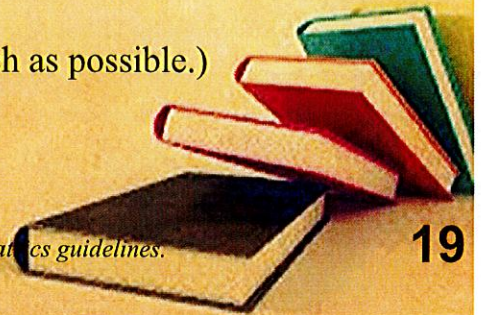
Student Groups A and B:

- **Group A students attend Mondays and Tuesdays.**
- **Group B students attend Thursdays and Fridays.**
- **Wednesdays are cyber days for all students (along with other days not in school). Teachers could potentially work from home on Wednesdays to deliver and administer lessons. Maintenance would deep clean on Wednesdays, weekends, and evenings.**

Schedule adjusted to accommodate weeks with holidays, scheduled absences, etc.

(Potentially allow families some flexibility in coordinating groups to ease child care concerns as much as possible.)

All information subject to change relative to changes in CDC, SD Dept. of Health, SD Dept. of Education, and American Academy of Pediatrics guidelines.



YELLOW PHASE Changes

- Continued daily cleaning/sanitizing.
- No assemblies, presenters, visitors or outside organizations.
- Greater social distancing possible during the school day due to half of the number of students being present on any given day.
- Any staff or students returning to school after a confirmed case of Covid must have written medical clearance to return.
- Masks will be highly recommended for staff and students in the Yellow phase.
- Protocols for students with exceptionalities will be addressed on a case-by-case basis and appropriate accommodations will be made to fully support safety and learning.
- Greater social distancing on bus due to half of the number of students being present on any given day.
- Students highly encouraged to wear masks while on school transportation.

All information subject to change relative to changes in CDC, SD Dept. of Health, SD Dept. of Education, and American Academy of Pediatrics guidelines.

RED PHASE

- Staff and students working remotely
- Transition to E-learning
- Student expected to log in according to scheduled times
 - MS/HS - according to regular class schedule
 - Elementary - as determined
- Attendance dependant on login and completion of assigned activities
- Regular communication required; it is expected that parents, students and staff respond to communication attempts in a timely manner.

Overall Considerations – All Phases

- **Handwashing takes a high priority; this will take considerable time but is essential for the health and safety of all.**
- **Students will wash hands or use hand sanitizer BEFORE going to specials and RETURNING from specials.**
- **Students will wash hands or use hand sanitizer BEFORE going out for recess and RETURNING from recess (only one classroom out on the playground at a time).**
- **Students will wash hands or use hand sanitizer BEFORE going to the cafeteria for lunch and RETURNING from the cafeteria.**
- **Students/staff will be discouraged from shaking hands, hugging, high fives, fist bumps, etc.**
- **Activities that combine classes or grade levels will be limited.**

Overall Considerations – All Phases

- **Students and staff should use social distancing to the best ability possible.**
- **Desks should be spread out as much as possible and face the same direction if possible.**
- **Activities that combine classes or grade levels will be limited.**
- **Sharing of items such as pencils, pens, scissors, calculators will be limited. Any items that are shared should be wiped down between uses.**
- **Changes to instruction may be inevitable to accommodate circumstances.**

School Activities/Athletics

- The SDHSAA is working on protocol for activities/athletics. No specific details have been determined at this time.