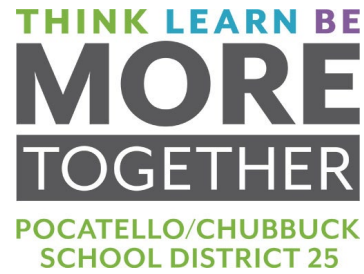


## SUMMARY OF HIGHLAND HIGH SCHOOL REBUILD

### Which Highland facilities were lost in the April 2023 fire?

In total, Highland lost approximately 75,000 square feet of space due to a fire in April 2023. Ruled accidental and electrical in nature, the fire left behind a trail of lost or damaged facilities, including the gymnasium, cafeteria, weight room, band/orchestra room, and choir room. The district estimates the project will be completed by the fall of 2027.



### What will the rebuild project include?

The Highland High School rebuild project includes: (a) replacing facilities lost or damaged in the fire, (b) adding, remodeling, and modernizing science classrooms, (c) replacing and increasing the size of the gymnasium and activity space, (d) constructing an auditorium.

### What are the Board of Trustees' priorities for the rebuild project?

Throughout their discussions, the Board has focused on guiding goals to:

- Educate learners in facilities design for today's standards;
- Return all learners and extracurricular programs to campus;
- Modernize science and music classrooms to meet the evolving needs of a growing student population;
- Restore the gymnasium as a central hub of physical, academic, social, and cultural development, increasing the capacity and versatility of the facility to resume as the community-building heart of the school.
- Restore functional gathering spaces critical to elevating the high school experience;
- Build a functional auditorium to meet educational, cultural, and community needs;
- Make prudent and fiscally responsible decisions.

The Board has framed its work on this issue with the belief that rebuilding Highland High School is not just an investment in educational facilities; it is an investment in the community's economic vitality. Every time we modernize our schools' infrastructure, we build the capacity to create jobs, attract businesses, and elevate property values, laying the foundation for a prosperous future. The district continues to pledge an unwavering commitment to stretch every taxpayer dollar as far as it will go as we work together to position PCSD 25 for a strong, successful future. As the building efforts begin, the Board and District encourages all members of the community to rally together in support of this transformative endeavor. Every individual has a vital role to play in shaping the future of Highland High School and ensuring its legacy endures for generations to come.

### About the DRAFT concept drawings:

The enclosed concept drawings are a draft and subject to modifications. The White model concept drawings are simplified architectural or design sketches that use minimal detail and color, typically in shades of white, to convey the basic form and structure of a concept.

### How will the project be funded?

In 2024, the Idaho Legislature passed a landmark bill projected to provide \$43 million to the Pocatello/Chubbuck School District to fund facilities construction. The district will use this funding, in combination with insurance replacement settlement, to reconstruct Highland High School.

### Where can I find more information about the fire and the rebuild project?

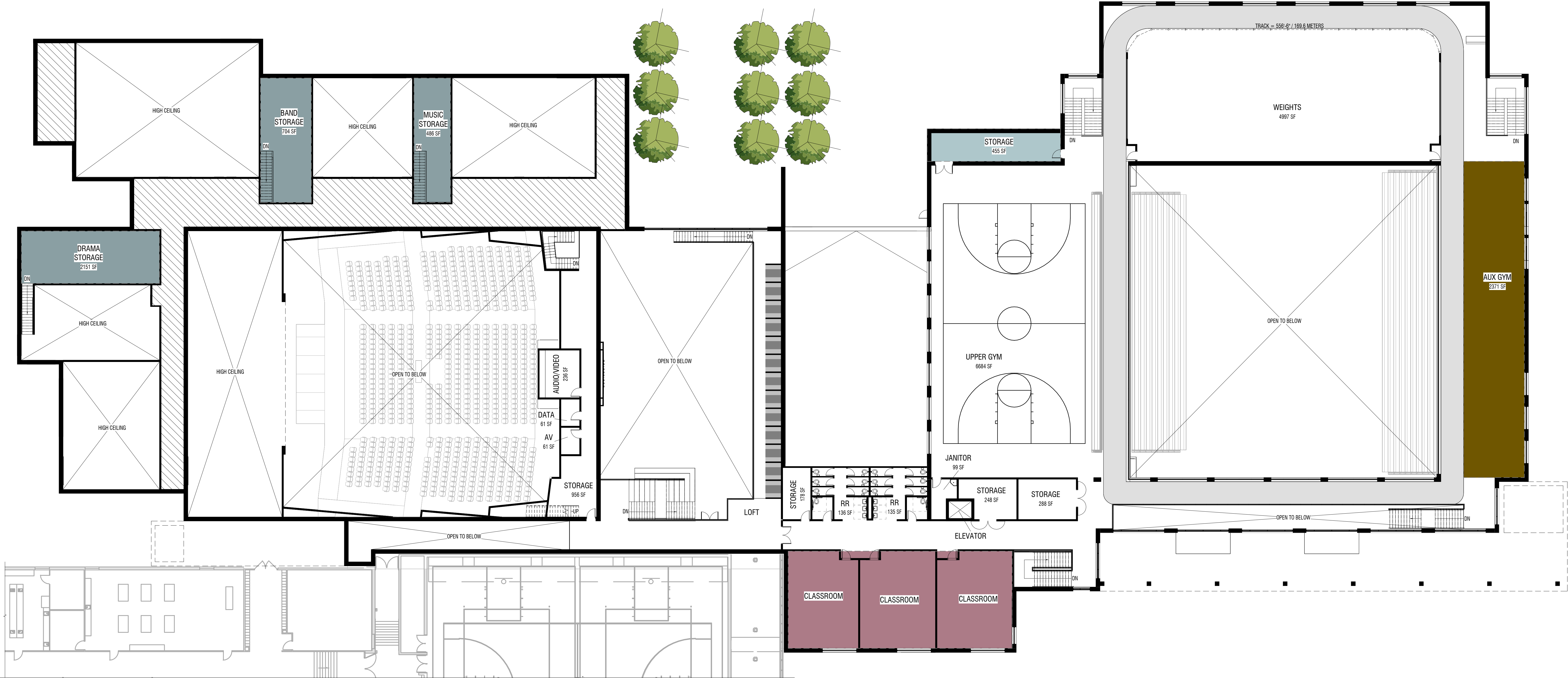
To review a comprehensive history on the issue, please visit [sd25.us/highland-fire-updates](https://sd25.us/highland-fire-updates).

DRAFT 6.24.2024 - Subject to Modifications

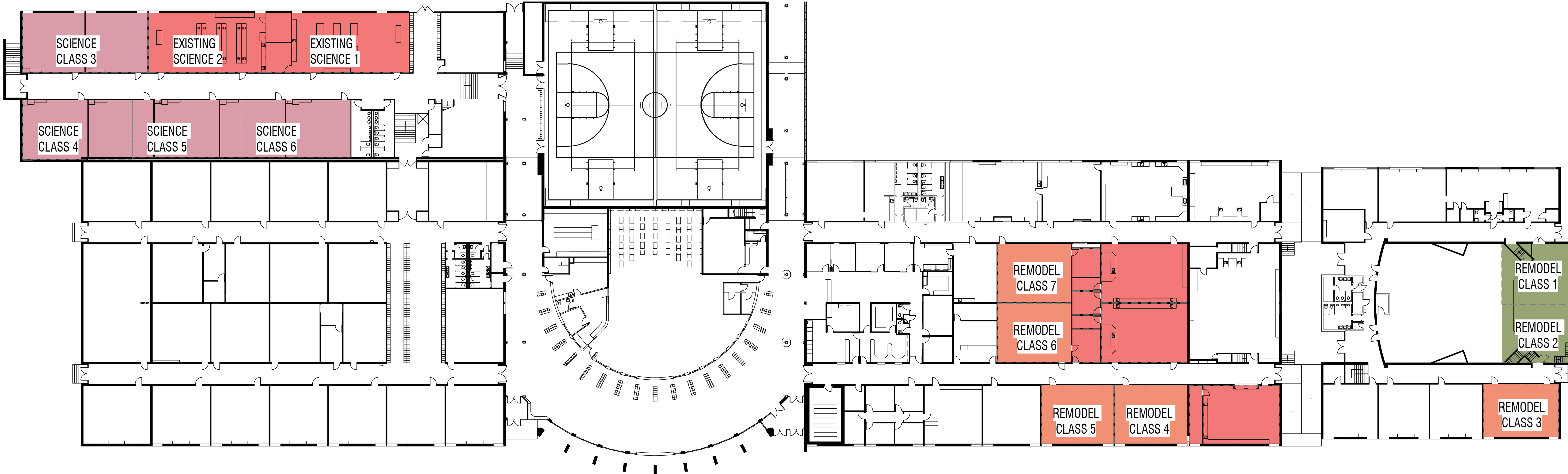




DRAFT 6.24.2024 - Subject to Modifications



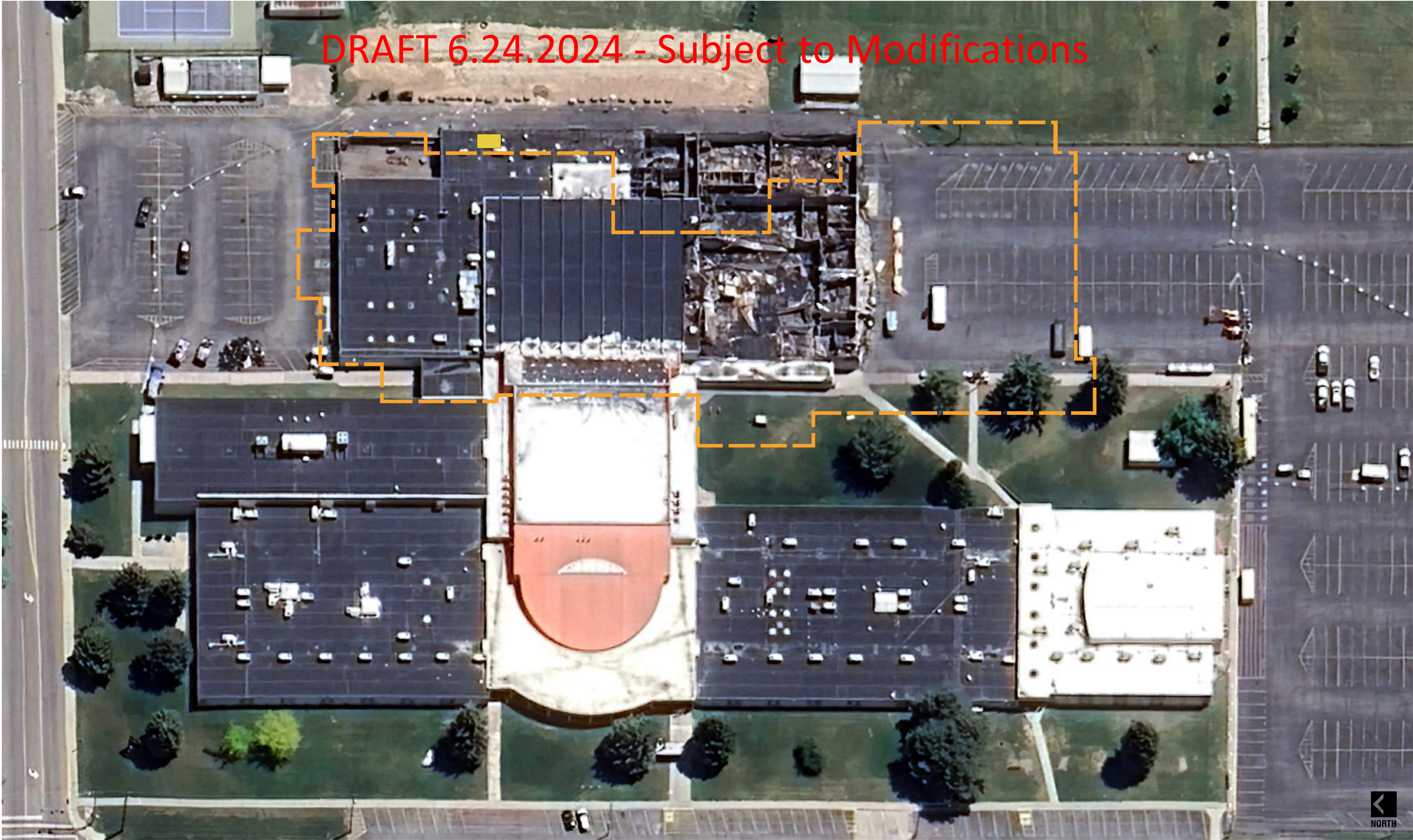
DRAFT 6.24.2024 - Subject to Modifications



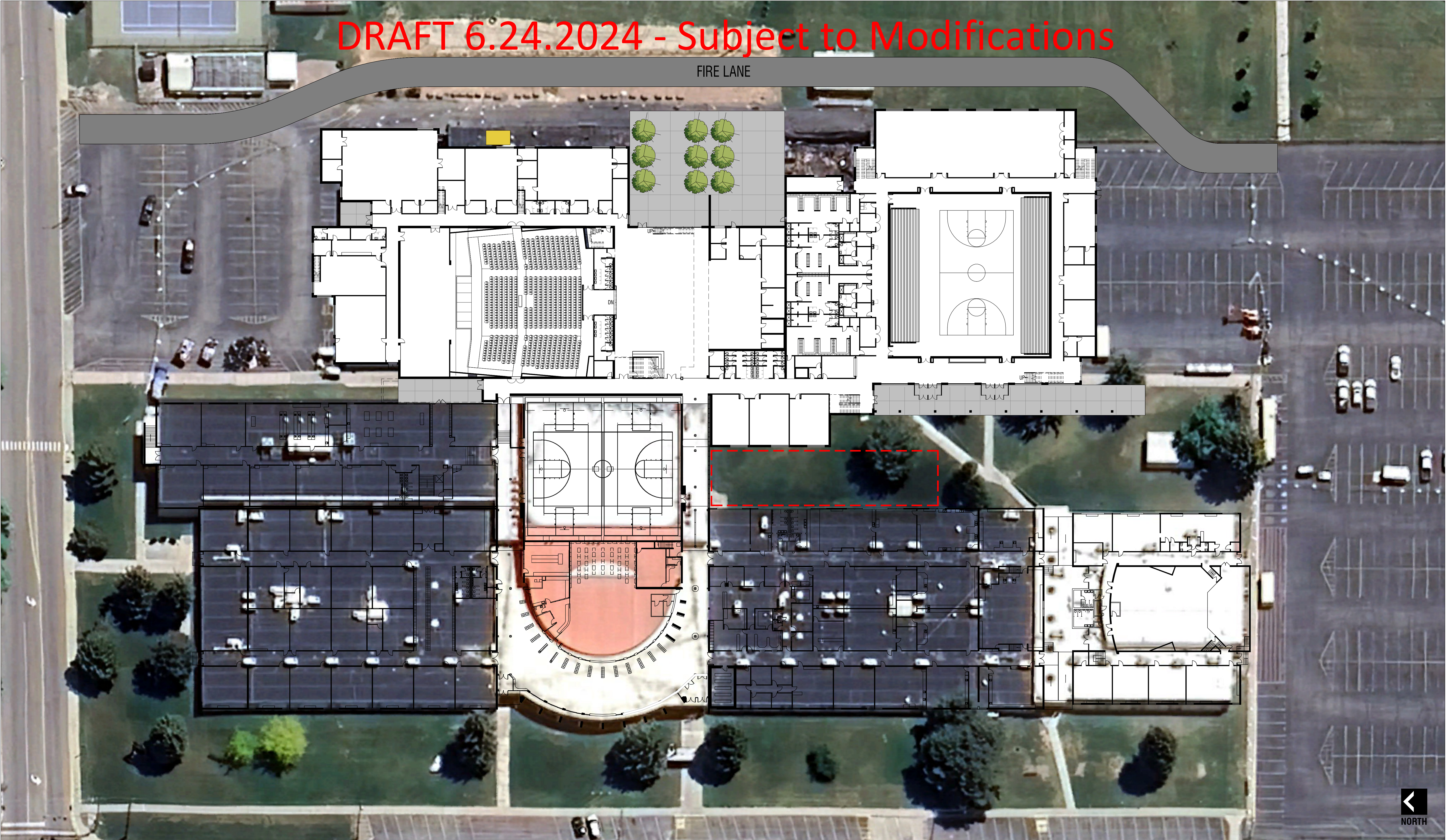
A1 FINISH FLOOR - LEVEL 1 - EXISTING  
1 : 300



DRAFT 6.24.2024 - Subject to Modifications

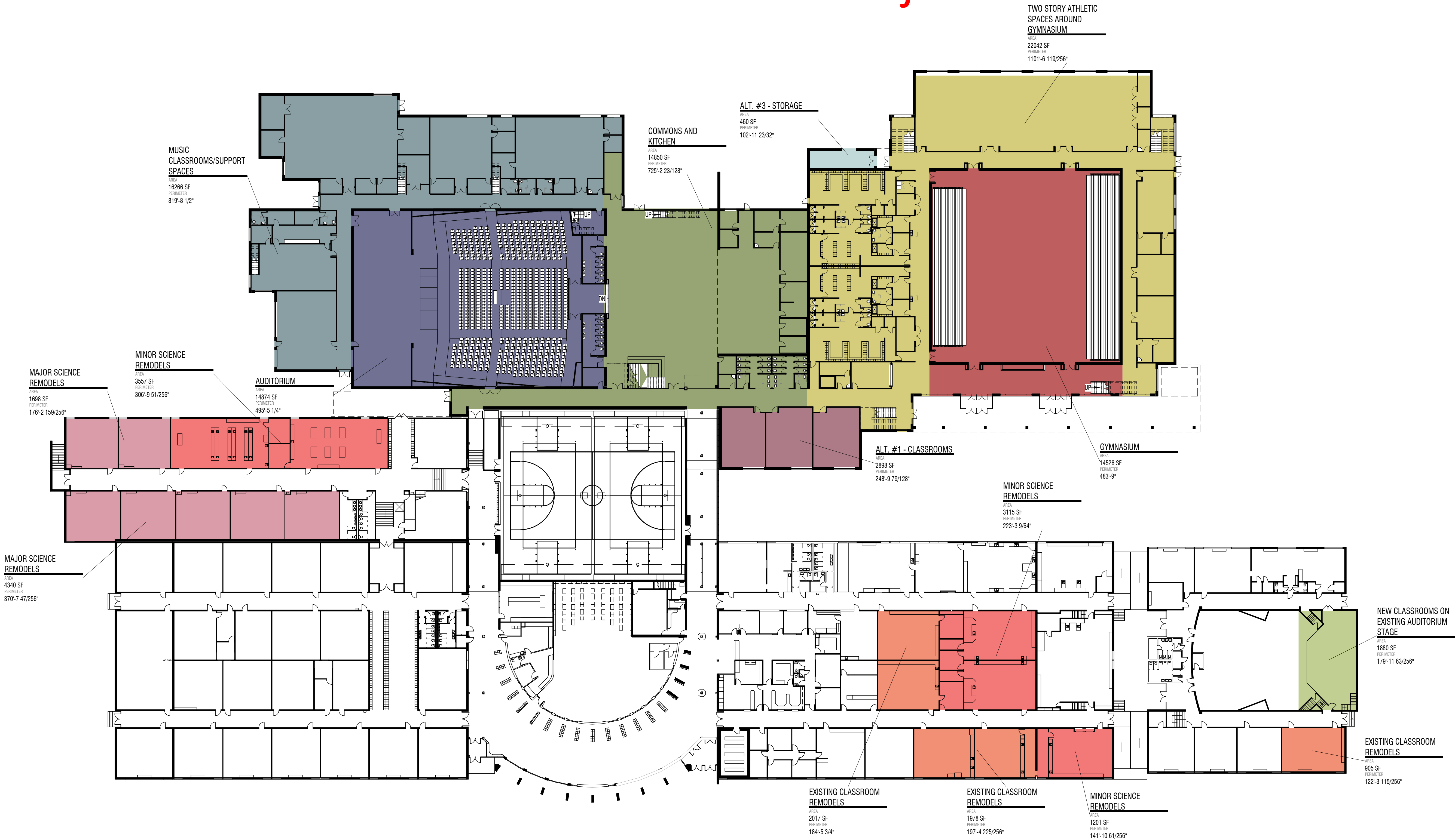








DRAFT 6.24.2024 - Subject to Modifications



ZONES LEGEND

|  |   |
|--|---|
|  | ALT. #1 - CLASSROOMS                        |
|  | ALT. #3 - STORAGE                           |
|  | AUDITORIUM                                  |
|  | COMMONS AND KITCHEN                         |
|  | EXISTING CLASSROOM REMODELS                 |
|  | GYMNASIUM                                   |
|  | MAJOR SCIENCE REMODELS                      |
|  | MINOR SCIENCE REMODELS                      |
|  | MUSIC CLASSROOMS/SUPPORT SPACES             |
|  | NEW CLASSROOMS ON EXISTING AUDITORIUM STAGE |
|  | TWO STORY ATHLETIC SPACES AROUND GYMNASIUM  |

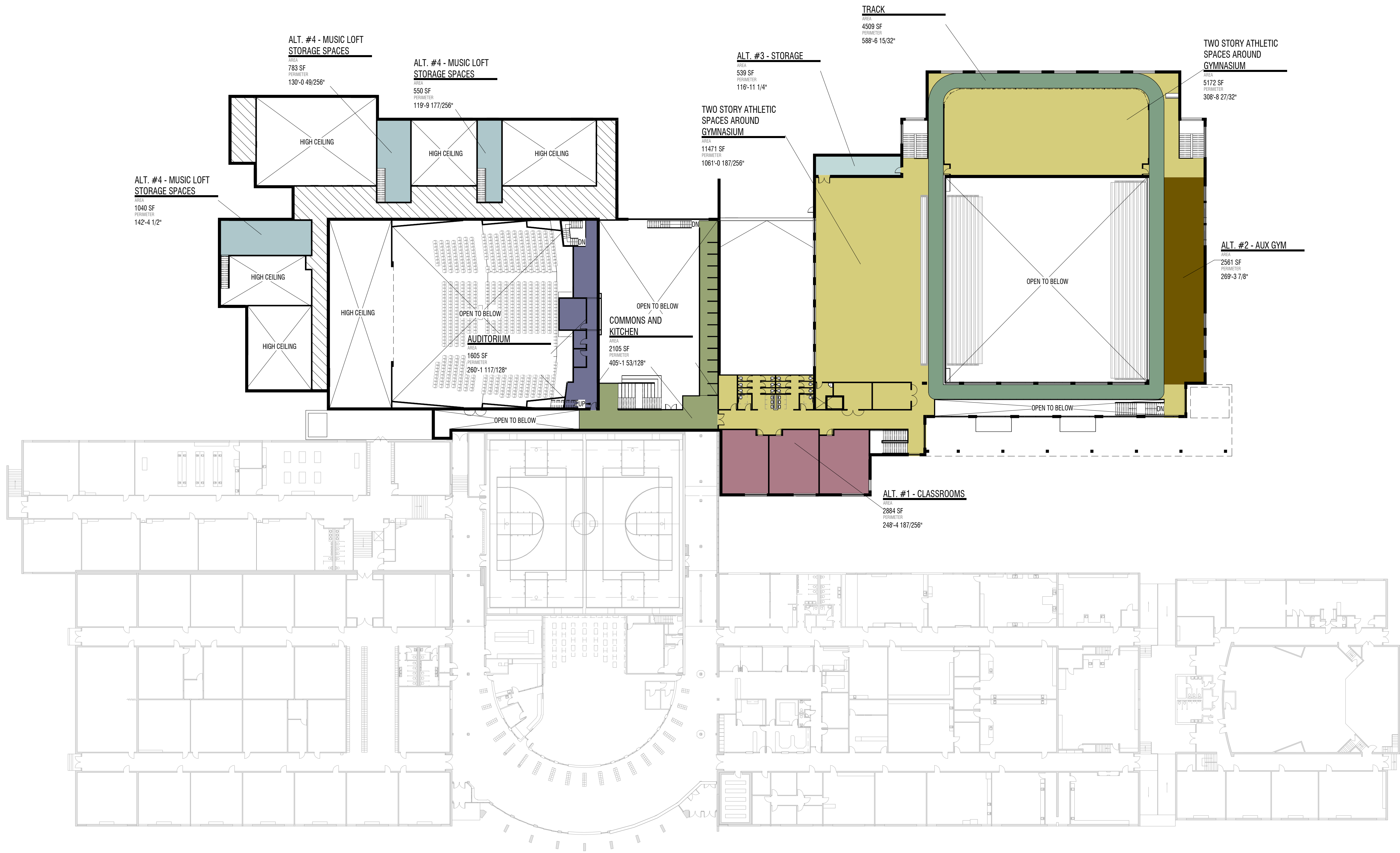
ZONES SQUARE FOOTAGE

|   |           |
|---|-----------|
| LEVEL 1                                     |           |
| ALT. #1 - CLASSROOMS                        | 2898 SF   |
| ALT. #3 - STORAGE                           | 460 SF    |
| AUDITORIUM                                  | 14874 SF  |
| COMMONS AND KITCHEN                         | 14850 SF  |
| EXISTING CLASSROOM REMODELS                 | 4900 SF   |
| GYMNASIUM                                   | 14526 SF  |
| MAJOR SCIENCE REMODELS                      | 6038 SF   |
| MINOR SCIENCE REMODELS                      | 7873 SF   |
| MUSIC CLASSROOMS/SUPPORT SPACES             | 16266 SF  |
| NEW CLASSROOMS ON EXISTING AUDITORIUM STAGE | 1880 SF   |
| TWO STORY ATHLETIC SPACES AROUND GYMNASIUM  | 22042 SF  |
|   | 106068 SF |
| LEVEL 2                                     |           |
| ALT. #1 - CLASSROOMS                        | 2884 SF   |
| ALT. #2 - AUX GYM                           | 2561 SF   |
| ALT. #3 - STORAGE                           | 539 SF    |
| ALT. #4 - MUSIC LOFT STORAGE SPACES         | 2373 SF   |
| AUDITORIUM                                  | 1605 SF   |
| COMMONS AND KITCHEN                         | 2105 SF   |
| TRACK                                       | 4509 SF   |
| TWO STORY ATHLETIC SPACES AROUND GYMNASIUM  | 16871 SF  |
|   | 33447 SF  |
|   | 140055 SF |

ALTERNATE SQUARE FOOTAGE

|   |           |
|---|-----------|
| LEVEL 1                                     |           |
| AUDITORIUM                                  | 14874 SF  |
| COMMONS AND KITCHEN                         | 14850 SF  |
| EXISTING CLASSROOM REMODELS                 | 4900 SF   |
| GYMNASIUM                                   | 14526 SF  |
| MAJOR SCIENCE REMODELS                      | 6038 SF   |
| MUSIC CLASSROOMS/SUPPORT SPACES             | 16266 SF  |
| NEW CLASSROOMS ON EXISTING AUDITORIUM STAGE | 1880 SF   |
| TWO STORY ATHLETIC SPACES AROUND GYMNASIUM  | 22042 SF  |
|   | 95377 SF  |
| LEVEL 2                                     |           |
| AUDITORIUM                                  | 1605 SF   |
| COMMONS AND KITCHEN                         | 2105 SF   |
| TRACK                                       | 4509 SF   |
| TWO STORY ATHLETIC SPACES AROUND GYMNASIUM  | 16871 SF  |
|   | 25090 SF  |
|   | 120467 SF |

DRAFT 6.24.2024 - Subject to Modifications



**ZONES LEGEND**

- ALT. #1 - CLASSROOMS
- ALT. #2 - AUX GYM
- ALT. #3 - STORAGE
- ALT. #4 - MUSIC LOFT STORAGE SPACES
- AUDITORIUM
- COMMONS AND KITCHEN
- TRACK
- TWO STORY ATHLETIC SPACES AROUND GYMNASIUM

**ZONES SQUARE FOOTAGE**

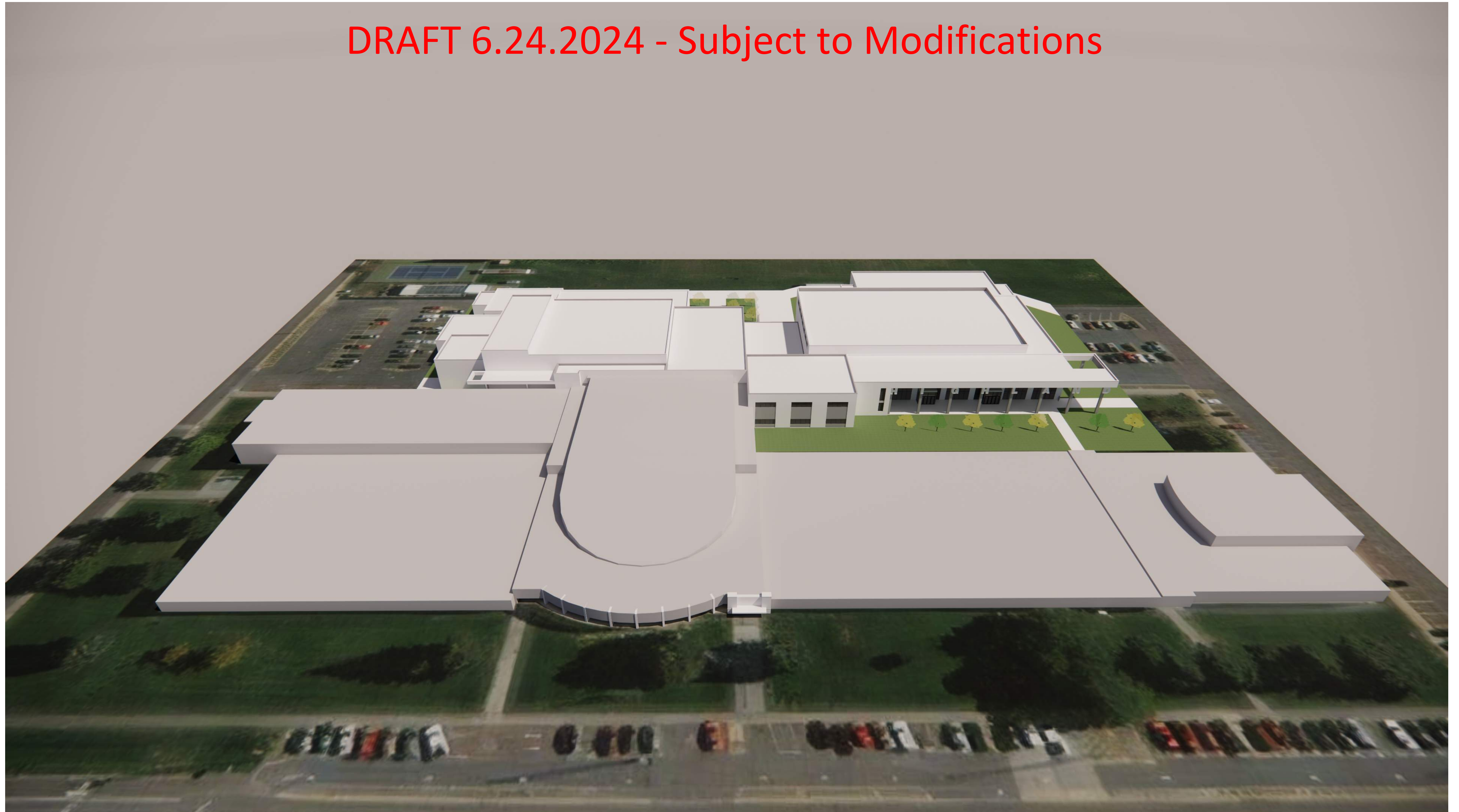
|   |           |
|---|-----------|
| <b>LEVEL 1</b>                              |           |
| ALT. #1 - CLASSROOMS                        | 2884 SF   |
| ALT. #2 - AUX GYM                           | 2561 SF   |
| ALT. #3 - STORAGE                           | 539 SF    |
| AUDITORIUM                                  | 14874 SF  |
| COMMONS AND KITCHEN                         | 14850 SF  |
| EXISTING CLASSROOM REMODELS                 | 4900 SF   |
| GYMNASIUM                                   | 14526 SF  |
| MAJOR SCIENCE REMODELS                      | 6038 SF   |
| MINOR SCIENCE REMODELS                      | 7873 SF   |
| MUSIC CLASSROOMS/SUPPORT SPACES             | 16266 SF  |
| NEW CLASSROOMS ON EXISTING AUDITORIUM STAGE | 1880 SF   |
| TWO STORY ATHLETIC SPACES AROUND GYMNASIUM  | 22042 SF  |
|   | 106608 SF |
| <b>LEVEL 2</b>                              |           |
| ALT. #1 - CLASSROOMS                        | 2884 SF   |
| ALT. #2 - AUX GYM                           | 2561 SF   |
| ALT. #3 - STORAGE                           | 539 SF    |
| ALT. #4 - MUSIC LOFT STORAGE SPACES         | 2373 SF   |
| AUDITORIUM                                  | 1605 SF   |
| COMMONS AND KITCHEN                         | 2105 SF   |
| TRACK                                       | 4509 SF   |
| TWO STORY ATHLETIC SPACES AROUND GYMNASIUM  | 16871 SF  |
|   | 33447 SF  |
|   | 140055 SF |

**ALTERNATE SQUARE FOOTAGE**

|   |           |
|---|-----------|
| <b>LEVEL 1</b>                              |           |
| AUDITORIUM                                  | 14874 SF  |
| COMMONS AND KITCHEN                         | 14850 SF  |
| EXISTING CLASSROOM REMODELS                 | 4900 SF   |
| GYMNASIUM                                   | 14526 SF  |
| MAJOR SCIENCE REMODELS                      | 6038 SF   |
| MUSIC CLASSROOMS/SUPPORT SPACES             | 16266 SF  |
| NEW CLASSROOMS ON EXISTING AUDITORIUM STAGE | 1880 SF   |
| TWO STORY ATHLETIC SPACES AROUND GYMNASIUM  | 22042 SF  |
|   | 95377 SF  |
| <b>LEVEL 2</b>                              |           |
| AUDITORIUM                                  | 1605 SF   |
| COMMONS AND KITCHEN                         | 2105 SF   |
| TRACK                                       | 4509 SF   |
| TWO STORY ATHLETIC SPACES AROUND GYMNASIUM  | 16871 SF  |
|   | 25090 SF  |
|   | 120467 SF |



DRAFT 6.24.2024 - Subject to Modifications



\*White model concept drawings are simplified architectural or design sketches that use minimal detail and color, typically in shades of white, to convey the basic form and structure of a concept.



DRAFT 6.24.2024 - Subject to Modifications



\*White model concept drawings are simplified architectural or design sketches that use minimal detail and color, typically in shades of white, to convey the basic form and structure of a concept.



DRAFT 6.24.2024 - Subject to Modifications



\*White model concept drawings are simplified architectural or design sketches that use minimal detail and color, typically in shades of white, to convey the basic form and structure of a concept.



DRAFT 6.24.2024 - Subject to Modifications



\*White model concept drawings are simplified architectural or design sketches that use minimal detail and color, typically in shades of white, to convey the basic form and structure of a concept.



DRAFT 6.24.2024 - Subject to Modifications



\*White model concept drawings are simplified architectural or design sketches that use minimal detail and color, typically in shades of white, to convey the basic form and structure of a concept.



DRAFT 6.24.2024 - Subject to Modifications



\*White model concept drawings are simplified architectural or design sketches that use minimal detail and color, typically in shades of white, to convey the basic form and structure of a concept.



DRAFT 6.24.2024 - Subject to Modifications



\*White model concept drawings are simplified architectural or design sketches that use minimal detail and color, typically in shades of white, to convey the basic form and structure of a concept.

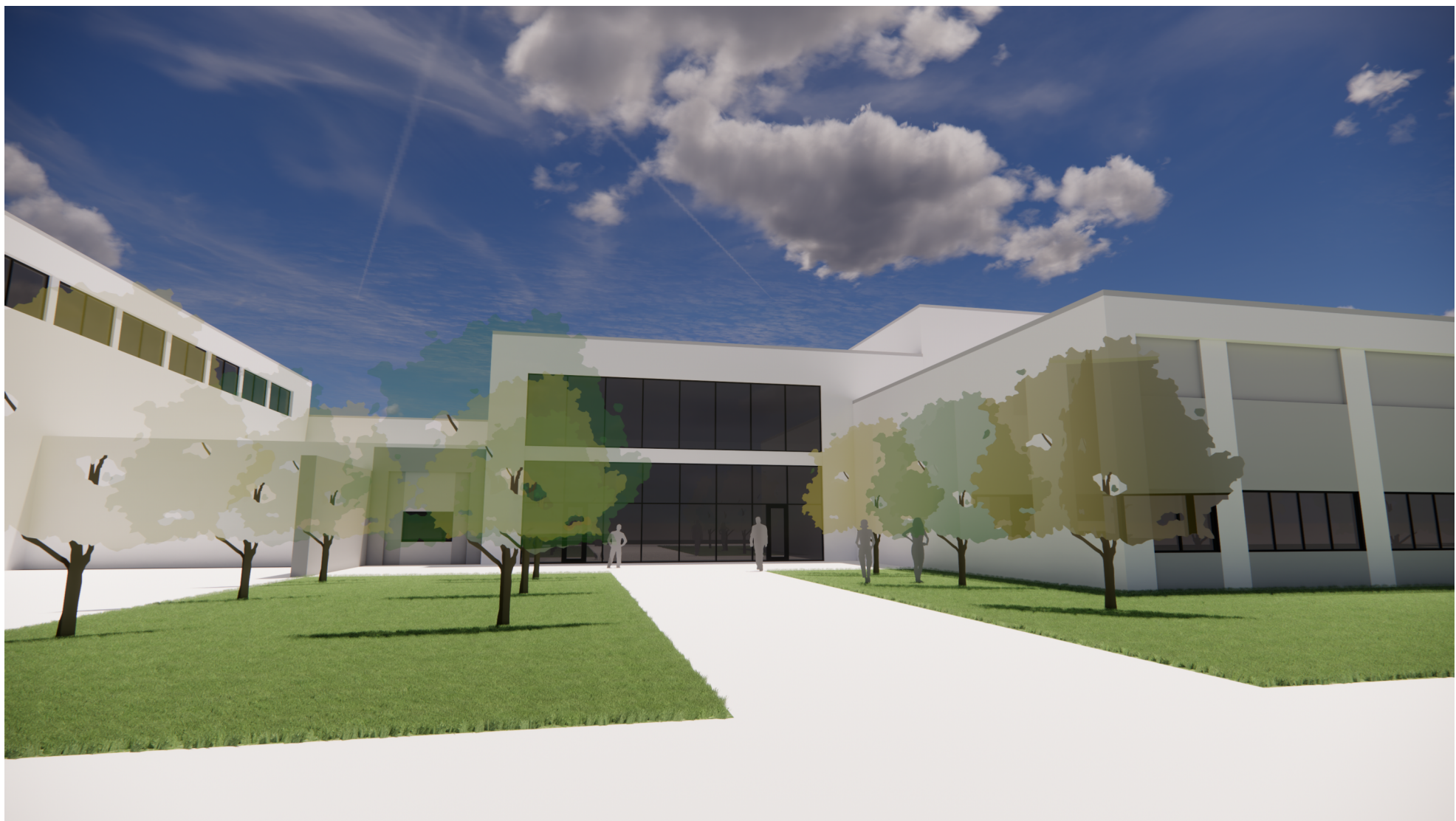




**DRAFT 6.24.2024 - Subject to Modifications**

\*White model concept drawings are simplified architectural or design sketches that use minimal detail and color, typically in shades of white, to convey the basic form and structure of a concept.



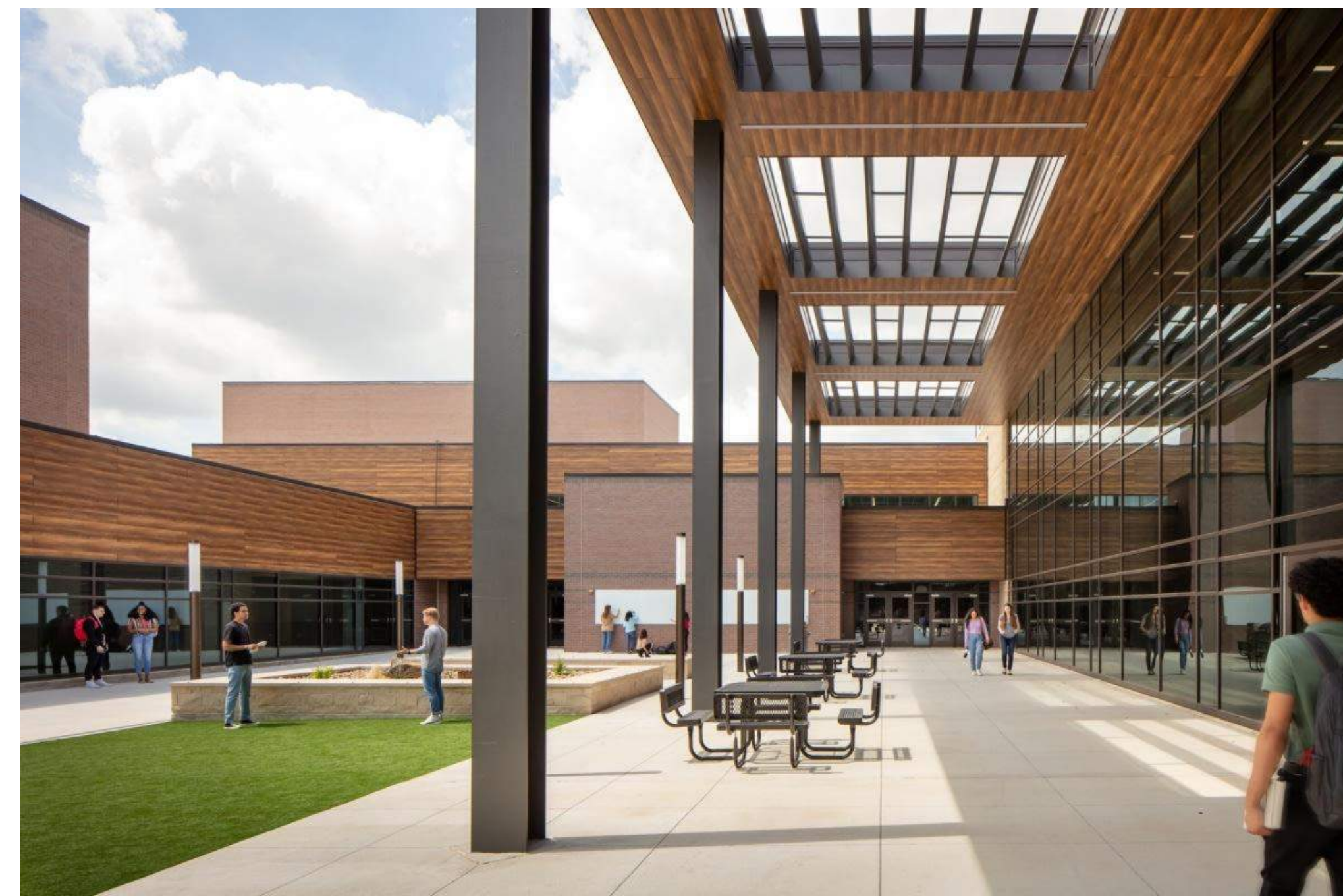


DRAFT 6.24.2024 - Subject to Modifications

\*White model  
concept drawings  
are simplified  
architectural or  
design sketches that  
use minimal detail  
and color, typically  
in shades of white,  
to convey the basic  
form and structure  
of a concept.



Examples:



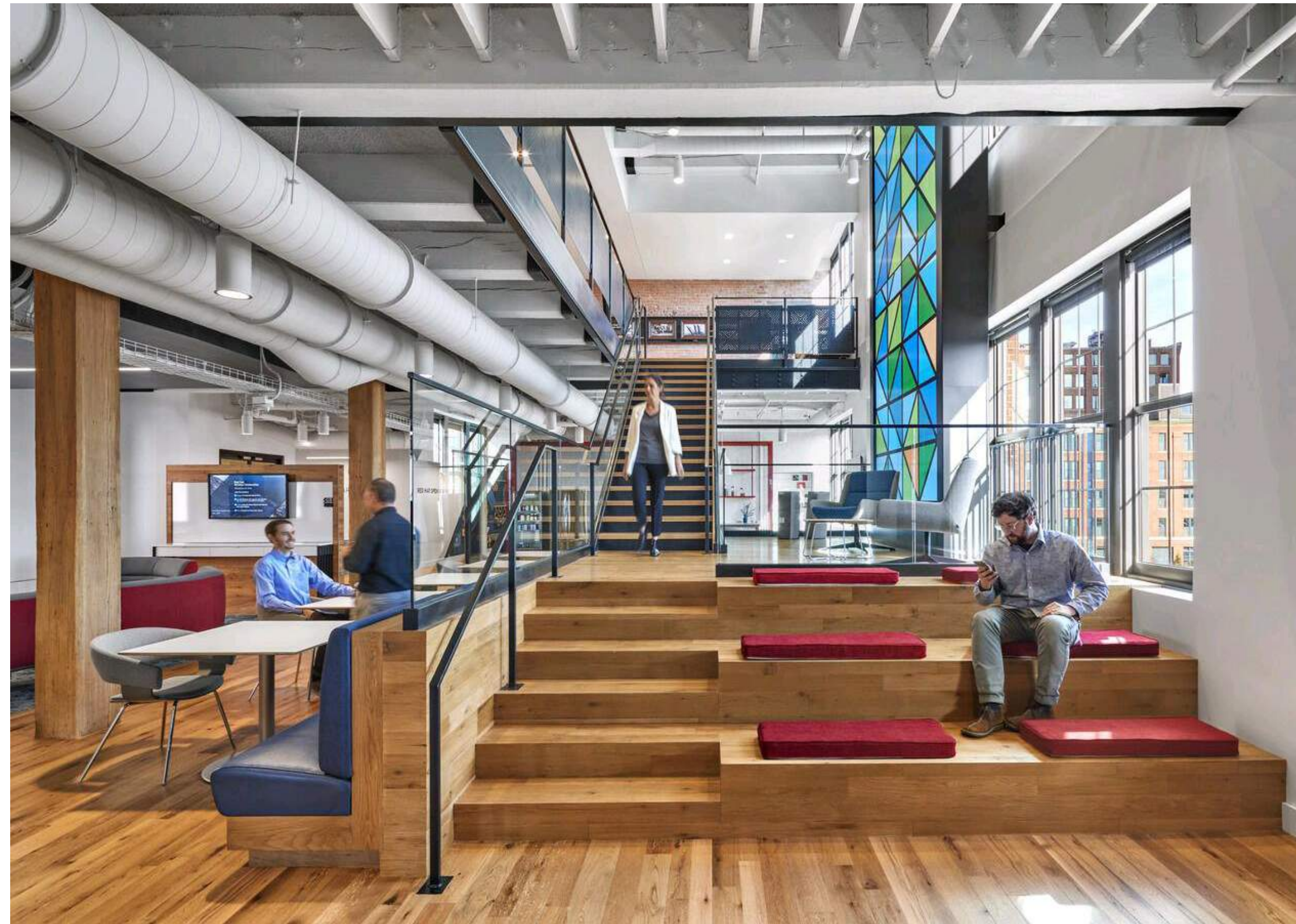
About the Canopy:

- Helps with Way finding/ path finding
- Protection for patrons entering and waiting
- Hangout/Gathering place
- Matches scale of Gymnasium and double height entry
- Controls West Sun

**DRAFT 6.24.2024 -  
Subject to  
Modifications**

**\*White model  
concept drawings  
are simplified  
architectural or  
design sketches that  
use minimal detail  
and color, typically  
in shades of white,  
to convey the basic  
form and structure  
of a concept.**





EXAMPLE OF COLLABORATION STAIR DESIGN.



## DRAFT 6.24.2024 - Subject to Modifications

Examples of "learning staircases" allowing for greater socialization, sense of community and diverse instructional opportunities

\*White model concept drawings are simplified architectural or design sketches that use minimal detail and color, typically in shades of white, to convey the basic form and structure of a concept.





DRAFT 6.24.2024 - Subject to Modifications

\*White model concept drawings are simplified architectural or design sketches that use minimal detail and color, typically in shades of white, to convey the basic form and structure of a concept.





DRAFT 6.24.2024 - Subject to Modifications

\*White model concept drawings are simplified architectural or design sketches that use minimal detail and color, typically in shades of white, to convey the basic form and structure of a concept.





DRAFT 6.24.2024 - Subject to Modifications

\*White model concept drawings are simplified architectural or design sketches that use minimal detail and color, typically in shades of white, to convey the basic form and structure of a concept.





DRAFT 6.24.2024 - Subject to Modifications

\*White model concept drawings are simplified architectural or design sketches that use minimal detail and color, typically in shades of white, to convey the basic form and structure of a concept.





DRAFT 6.24.2024 - Subject to Modifications

\*White model concept drawings are simplified architectural or design sketches that use minimal detail and color, typically in shades of white, to convey the basic form and structure of a concept.