



TRANSPORTATION OPTIONS AT GFS (2024 - 2025)

Germantown Friends School, nationally recognized for its Quaker values, commitment to excellence, and unique location in historic Germantown, proudly serves families from a wide variety of neighborhoods within the city of Philadelphia and from the surrounding suburbs. In total, GFS draws families from more than 80 zip codes in the Delaware Valley region. The GFS Transportation Department is dedicated to providing reliable, convenient, and safe transportation options for all of our families. Our Transportation Department is here to assist you with any needs you may have.

Private Transportation Information

GFS offers fee-based private transportation between three regions and our Main Campus in Germantown. There are two levels of service utilizing the same vehicles. GFS contracts with Philly Trans to provide these services. Private Transportation options are available to all students in Early Childhood through grade 12. Any and all families who reside outside of these predetermined (mapped) service areas are welcome to come into the service areas on their own to take advantage of the private transportation options from anywhere within them.

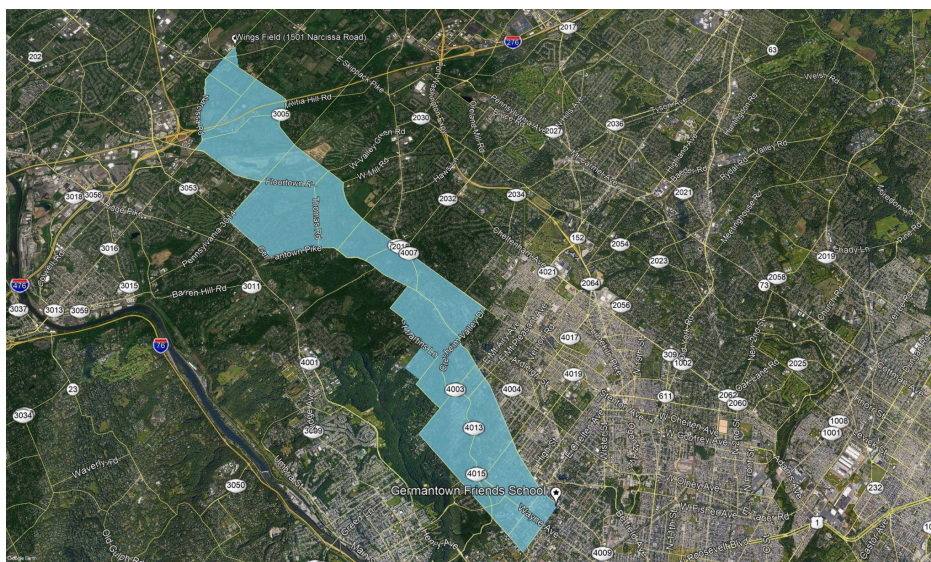
Option/Level 1: Door-to-Door Service (Chestnut Hill/Mt. Airy/Blue Bell Route ONLY)

Currently, there is one door-to-door transportation route: Chestnut Hill/Mt. Airy/Blue Bell. GFS door-to-door transportation is the most customized option, offering morning pick-up and afternoon drop-off at your front door for families residing in specific areas. Door-to-door stops are serviced along the same routes and with the same vehicles as other private transportation options. There is currently one departure time for this route from Main Campus immediately following the school day dismissal time.

ONE-WAY
\$2,225

ROUND-TRIP
\$4,450

DOOR-TO-DOOR PER
RIDE
\$40



Chestnut Hill/Mt.Airy/Wyndmoor/Blue Bell Route

- Boundaries: Coulter Street to the south, Germantown Avenue to Cresheim Valley Drive to Stenton Avenue to the east, Wissahickon Avenue to Germantown Pike to the west, and Narcissa Road to the north. Door-to-door is available within this service area.

This route offers the following established neighborhood stop:

- Blue Bell (Wings Field, 1501 Narcissa Rd., Blue Bell, PA 19422)
- Pricing for this stop on this route only:

ONE-WAY	ROUND-TRIP	NEIGHBORHOOD STOP
\$1,625	\$3,250	PER RIDE
		\$25

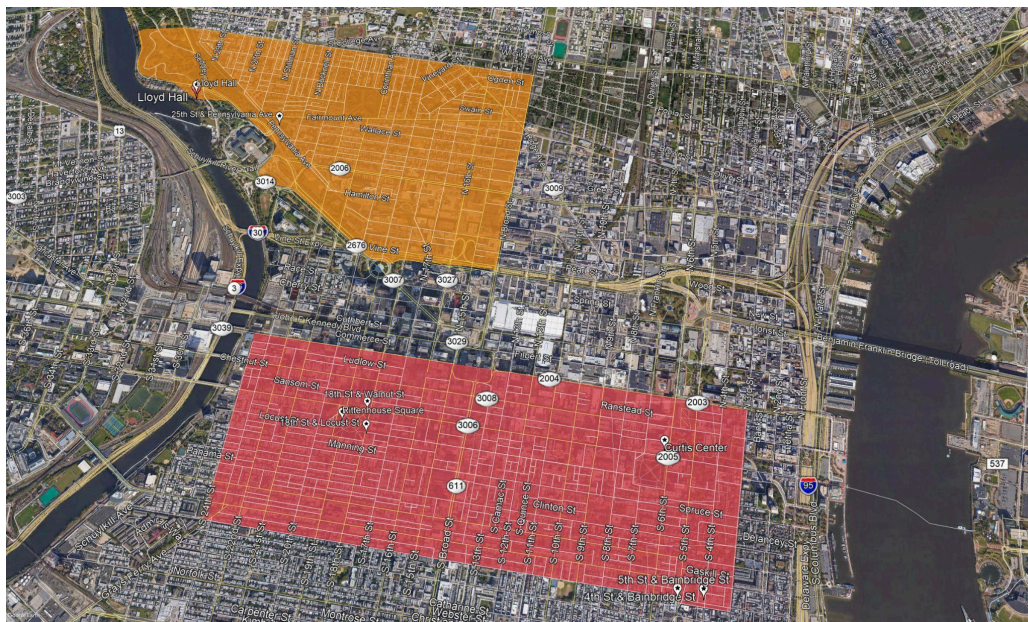
Option/Level 2: Art Museum/Fairmount/Center City Orange/Center City Blue

This service transports students to and from a handful of centrally located, predetermined neighborhood stops. Rides can be arranged for morning pick-up and/or drop-off after school, departing campus immediately following the school day dismissal.

For Early Childhood and Lower Students **ONLY** attending ASpire or Clubs, there is a departure at 4:30 p.m. with limited stops combining all three (3) of these geographic routes. Stops are listed on the registration form.

For Middle School Students **ONLY** after middle school sports, there is a 4:45 p.m./5 p.m. departure with limited stops combining all three (3) of these geographic locations. Stops are listed on the registration form.

ONE-WAY	ROUND-TRIP	NEIGHBORHOOD STOP
1,625	\$3,250	PER RIDE
		\$25



Fairmount/Art Museum Neighborhood Stops Route

- Boundaries: Poplar Street to the north, Kelly Drive to the west, Ben Franklin Parkway and Vine Street to the south, and Broad Street to the east.
- Door-to-door is not available within this service area in order to lessen the duration of the ride for all children.

This route offers the following established neighborhood stop:

- 25th & Pennsylvania Avenue (Northeast corner)
- Additional stops will be determined by ridership

Center City/Downtown Neighborhood Stops Route (CC Blue and CC Orange Routes)

- Boundaries: 3rd Street to the east, Market to the north, Bainbridge Street to the south, and 24th Street to the west.
- Door-to-door is not available within this service area in order to lessen the duration of the ride for all children.

This route offers the following established neighborhood stops:

- Rittenhouse Square: 18th & Walnut Street
- Queen Village: 5th & Bainbridge Street
- The Curtis Center: 6th & Walnut Street
- Additional stops will be determined by ridership
- **The Center City Route has been divided into Center City Blue (East of Broad) and Center City Orange (West of Broad)**

Carpooling

Many families arrange to share driving by setting up carpools. The GFS Veracross Directory has a listing of families by zip code and can be a helpful resource. The school division offices and the Parents Association may also be of assistance in connecting families.

General Bus Information

Philadelphia Residents

School District Bussing: Grades 1-6

Philadelphia residents who live more than 1.5 miles from GFS qualify for free bus transportation for students in grades 1-6. Currently, there are five (5) Philadelphia School District (PSD) bus routes that transport GFS students exclusively and are determined by the PSD. The pick-up/drop-off location can be up to a half-mile from the student's home. These routes generally have the same driver from Philly Transportation ("Philly Trans," the yellow school bus company contracted by the PSD) each day. The GFS Transportation Department, which acts as a liaison between the PSD, Philly Trans, and GFS families, will forward the names of all enrolled families to the district. They, in turn, will create the routes and schedules and notify you directly of your child's pick-up and drop-off times and location in late August.

Note: The Philadelphia School District does not allow 7th and 8th graders to ride the school buses with younger siblings. PSD also does not offer any public school busing to Early Childhood or Kindergarten students.

Note: The Philadelphia School District may offer a **Flat Rate pilot program** that allows families to opt out of traditional bus service and receive a monetary stipend in exchange. *This program is not run nor administered by Germantown Friends School.* There are eligibility criteria that must be met and certain steps families must take. The Philadelphia School District has not indicated if the program will continue for the 2024-25 academic school year. Families still need to register their children by completing the appropriate form every year if you are interested in this program as your child(ren) need to be entered into their database by GFS. Families must register and notify the Philadelphia School District that they want to opt-out of "traditional" school bus services by completing forms on their website. For more information please go to their [website](#).

Public Transportation (SEPTA): Grades 7-12

Once a Philadelphia resident enters grade 7, school district busing is no longer provided. Instead, students in grades 7-12, who live more than 1.5 miles from GFS, qualify for a yearly SEPTA fare card, which is issued at the beginning of the school year at the Front Desk in the Main Building. SEPTA Fare cards can now be used on all forms of SEPTA transit including Regional Rail. The Philadelphia School District issues them once and the student does not need another one unless they change schools or lose them. Students need to keep their issued Fare Card for the duration of their time at GFS. If they are lost they should report it to the Front Desk or Pam Richardson (transportation@germantownfriends.org). For further information, visit www.septa.org.

Several SEPTA bus routes serve the area surrounding GFS. The 23 bus stops at the corner of Germantown & Coulter. The H and XH routes stop at the corner of Greene & Coulter. For students, faculty, and staff who travel via SEPTA Regional Rail, GFS contracts with Philly Trans to provide a free shuttle between campus and the Queen Lane Station each afternoon. The Queen Lane Station, on the Chestnut Hill West Regional Rail line, is adjacent to the GFS playing fields at Midvale and Wissahickon Avenues. There is a morning shuttle from Wayne Junction (a major stop on the Airport; Warminster; West Trenton; Lansdale/Doylestown; Chestnut Hill East Line; and Fox Chase Regional Rail lines). There are two (2) departure times from Wayne Junction: 7:25 a.m. and 7:50 a.m. Many students choose to travel home via Regional Rail from the Queen Lane Station directly after sports dismissal.

Suburban Township Residents

School District Bussing: Kindergarten-Grade 12

Each township provides transportation in different ways. Some transport only GFS students door to door; some send students to a central location, then re-route them to GFS; and some bus GFS students along with students from neighboring independent schools. Suburban school districts do not generally transport students if the distance exceeds 10 miles. Please check with your local school district or the GFS Transportation Department for more details or to confirm transportation options from your home to GFS.

The GFS Transportation Department, which acts as a liaison with the suburban school districts, will forward the names of all enrolled families to the districts. The districts will create the routes and schedules and notify families directly of a child's pick-up and drop-off times and location in late August. The following suburban school districts and/or townships provide transportation to GFS for grades Kindergarten-12:

- Abington School District
- Cheltenham School District
- Colonial School District
- Lower Merion School District
- Lower Moreland School District
- Haverford Township
- Springfield Township
- Upper Dublin School District
- Upper Darby School District
- Upper Merion School District
- Upper Moreland School District
- William Penn School District
- Wissahickon School District