



Success at Each Switchback

Presented by Dr. Eliza Sorte-Thomas

elizathomaseducator@gmail.com

Essential Ideas for Our Time



**Profile of
two Hikers**

01

03

**The Journey v.
The Summit**

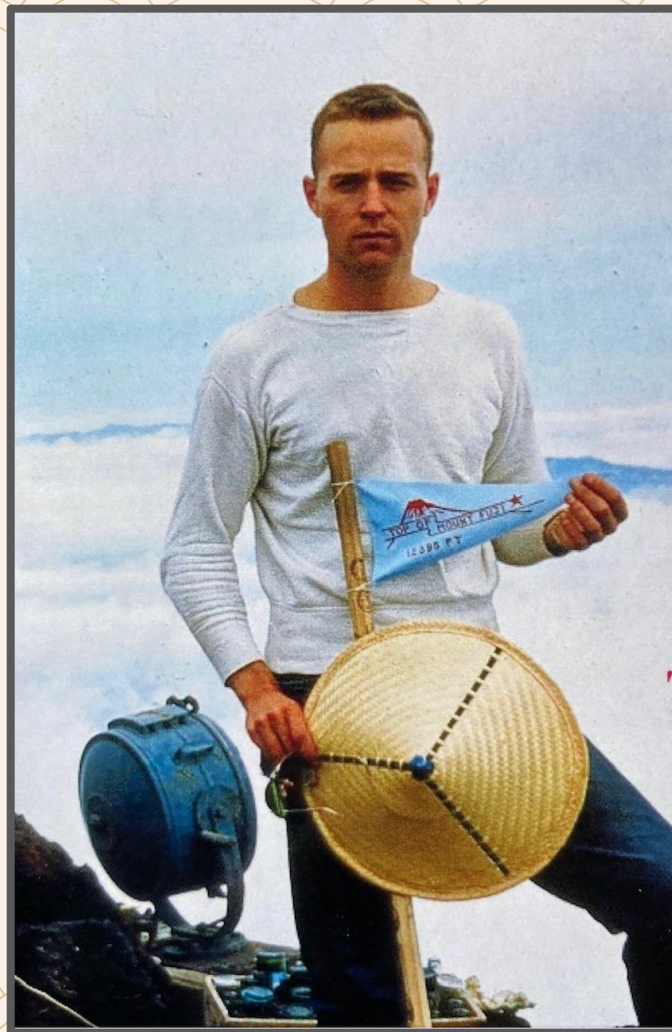
Switchbacks

02

04

**Choice Boards
for the Climb**













Profile of Two Hikers

Resilient

Honest

Hard-Working

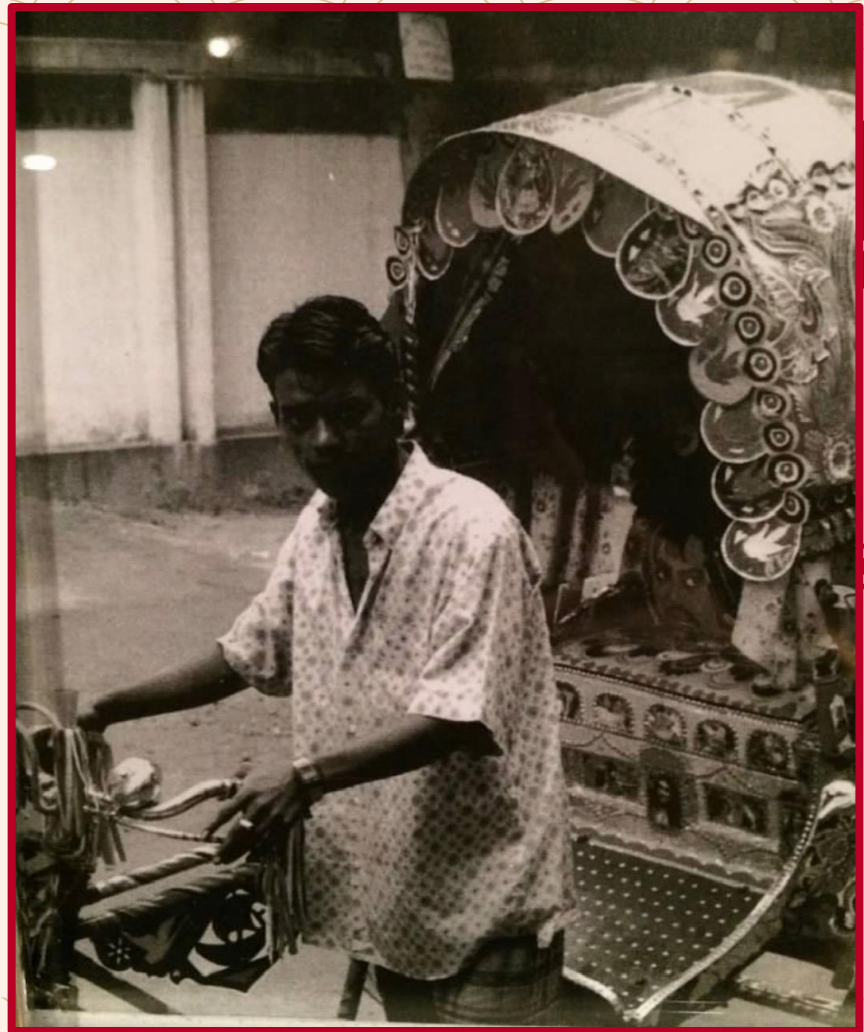
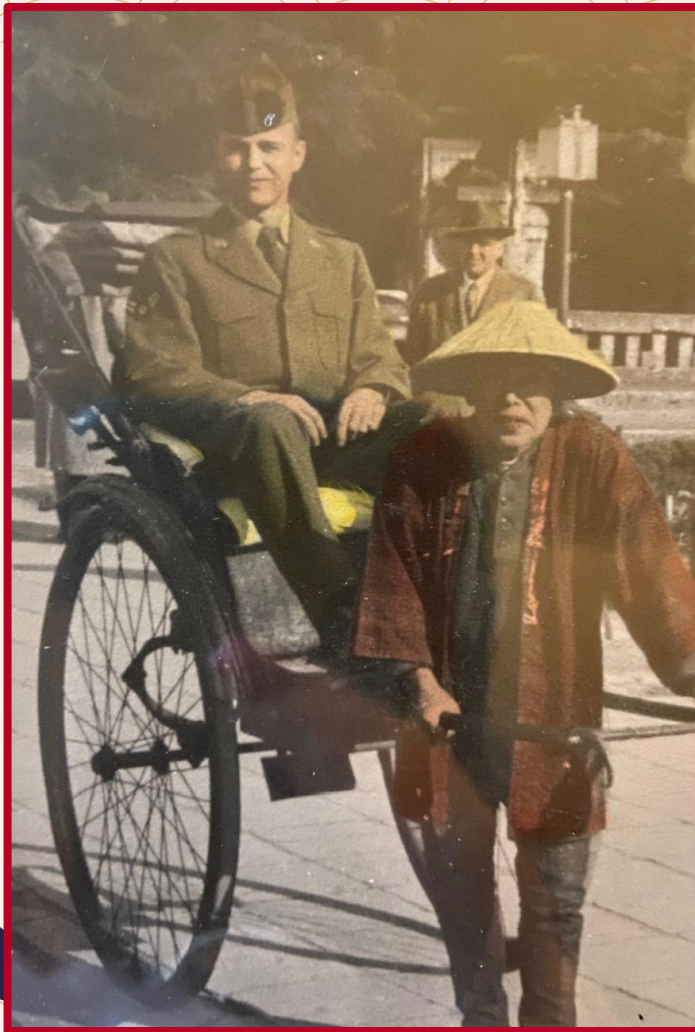
Reflective



Loyal

Funny

Curious



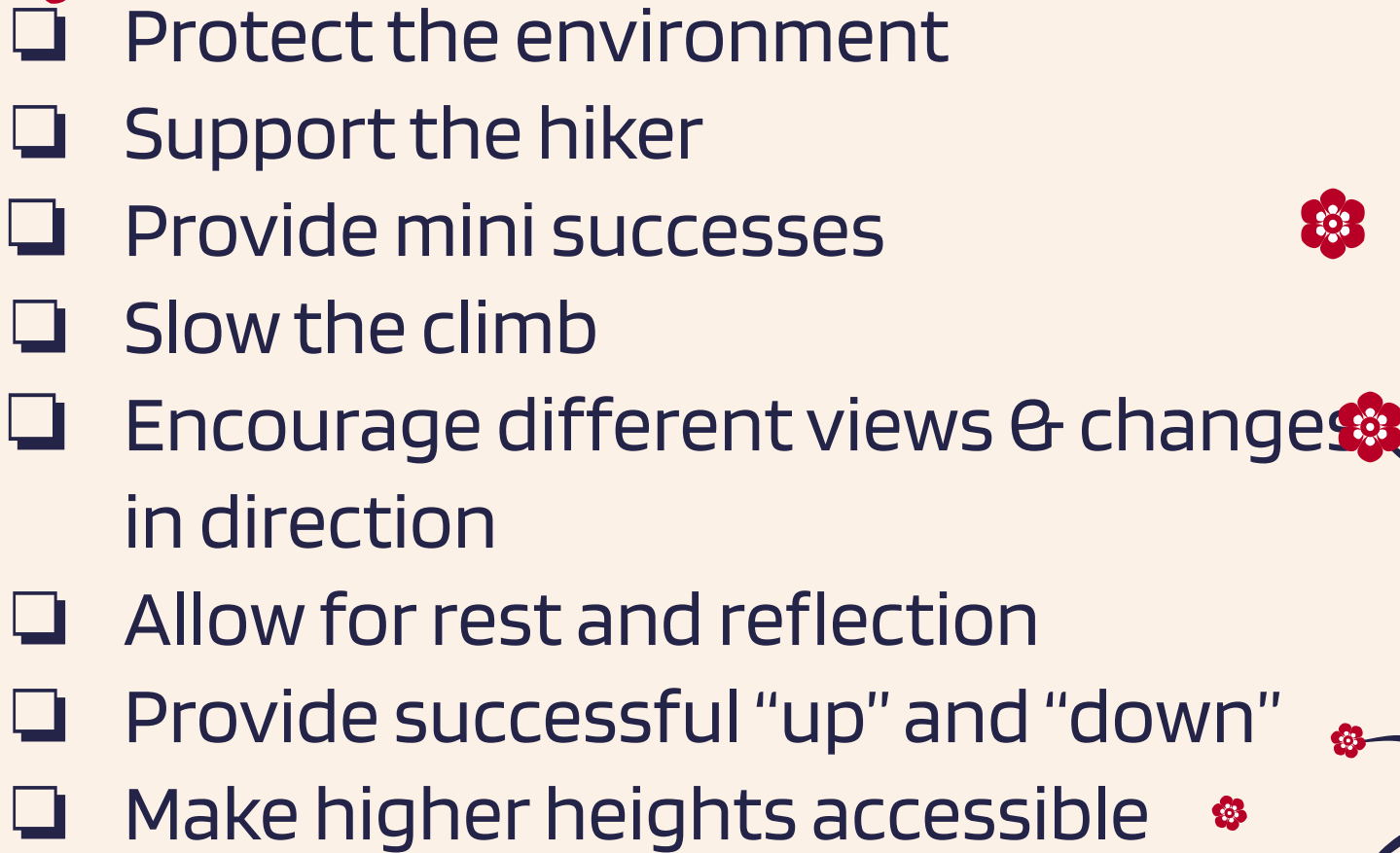
Who are our “hikers”? Who might need to give us a “lift”?

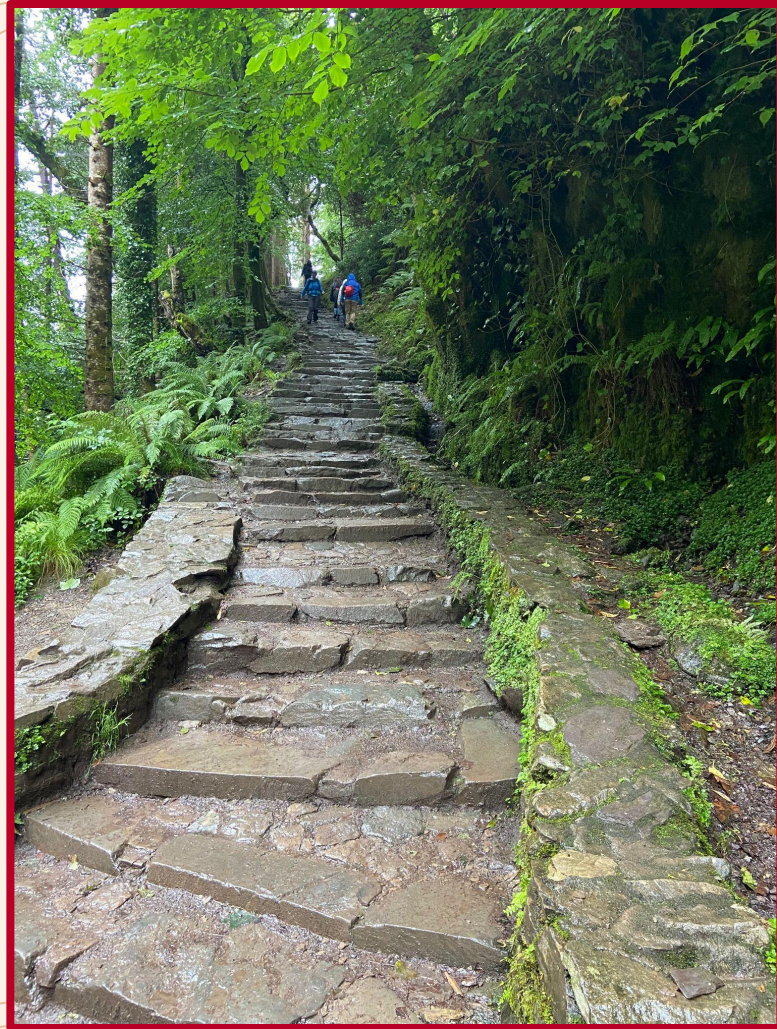
- Who is on the trail with you?
- Who might give you a lift to the start of the trail?
- Who is leading the charge?
- Who is in the middle?
- Who do you need to encourage to keep going?



Switchbacks & Their Purpose



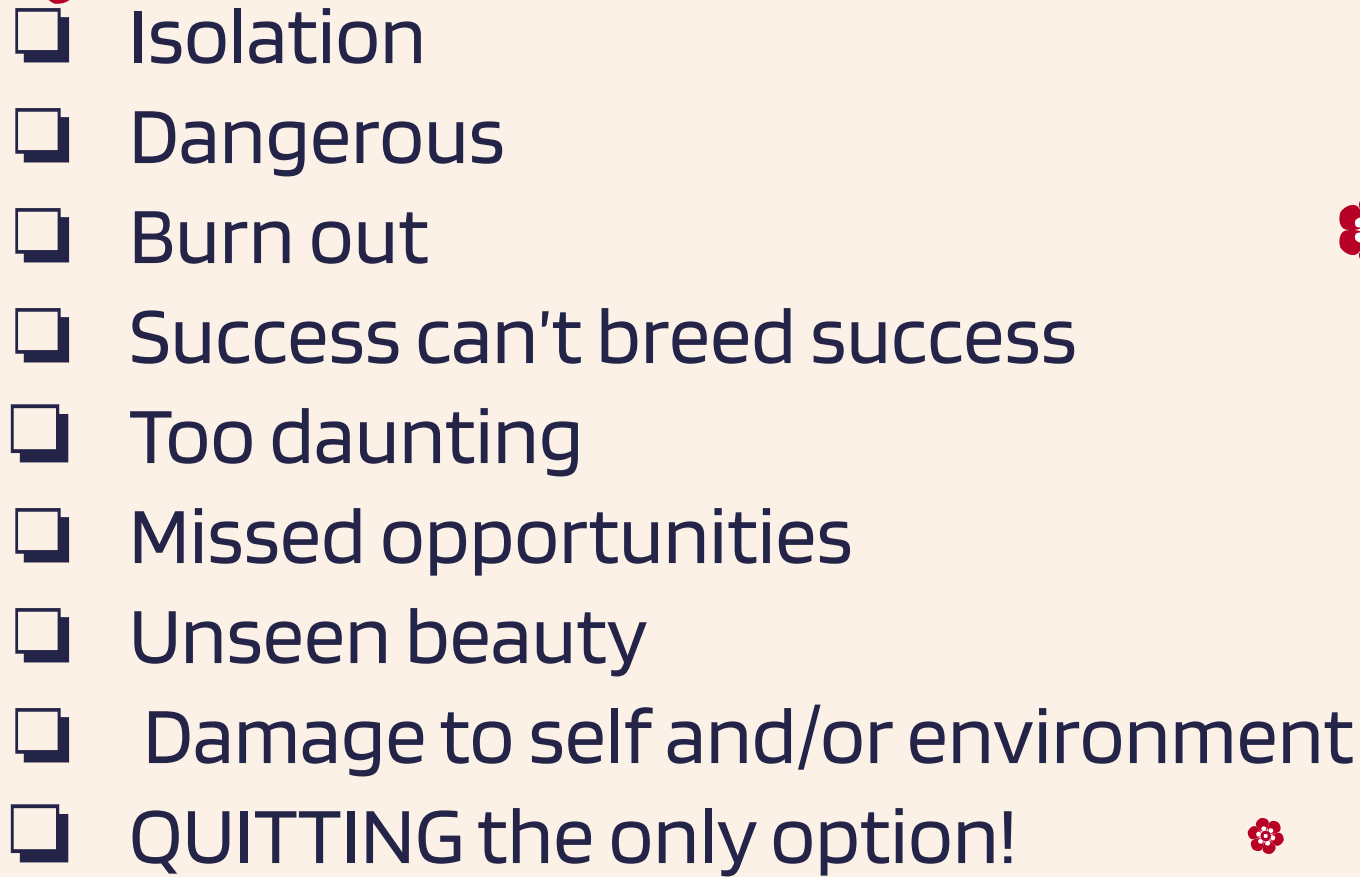
- 
- ❑ Protect the environment
 - ❑ Support the hiker
 - ❑ Provide mini successes
 - ❑ Slow the climb
 - ❑ Encourage different views & changes in direction
 - ❑ Allow for rest and reflection
 - ❑ Provide successful “up” and “down”
 - ❑ Make higher heights accessible





Consequences of No Switchbacks



- 
- ❑ Isolation
 - ❑ Dangerous
 - ❑ Burn out
 - ❑ Success can't breed success
 - ❑ Too daunting
 - ❑ Missed opportunities
 - ❑ Unseen beauty
 - ❑ Damage to self and/or environment
 - ❑ QUITTING the only option!







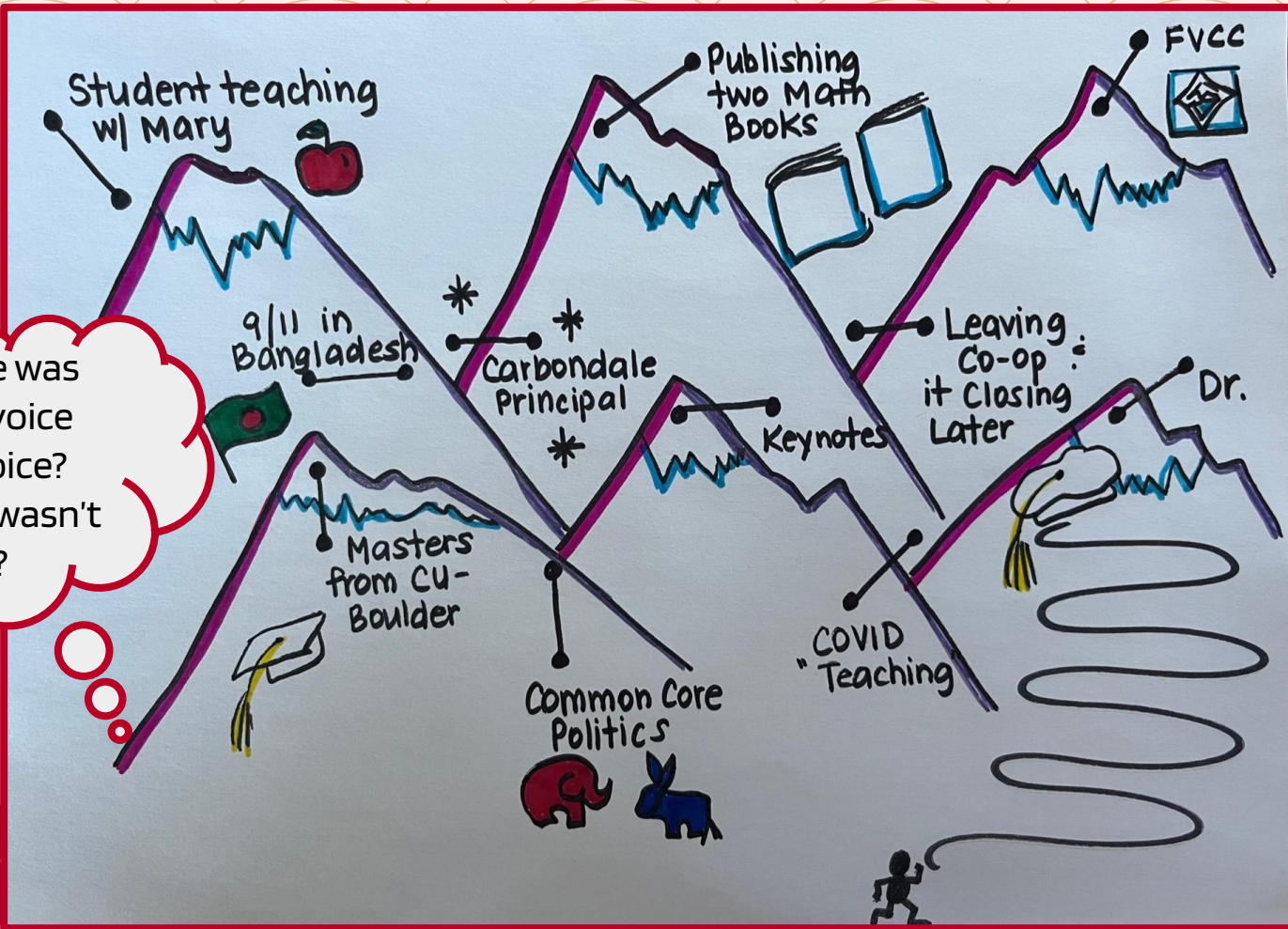
Peaks & Valleys

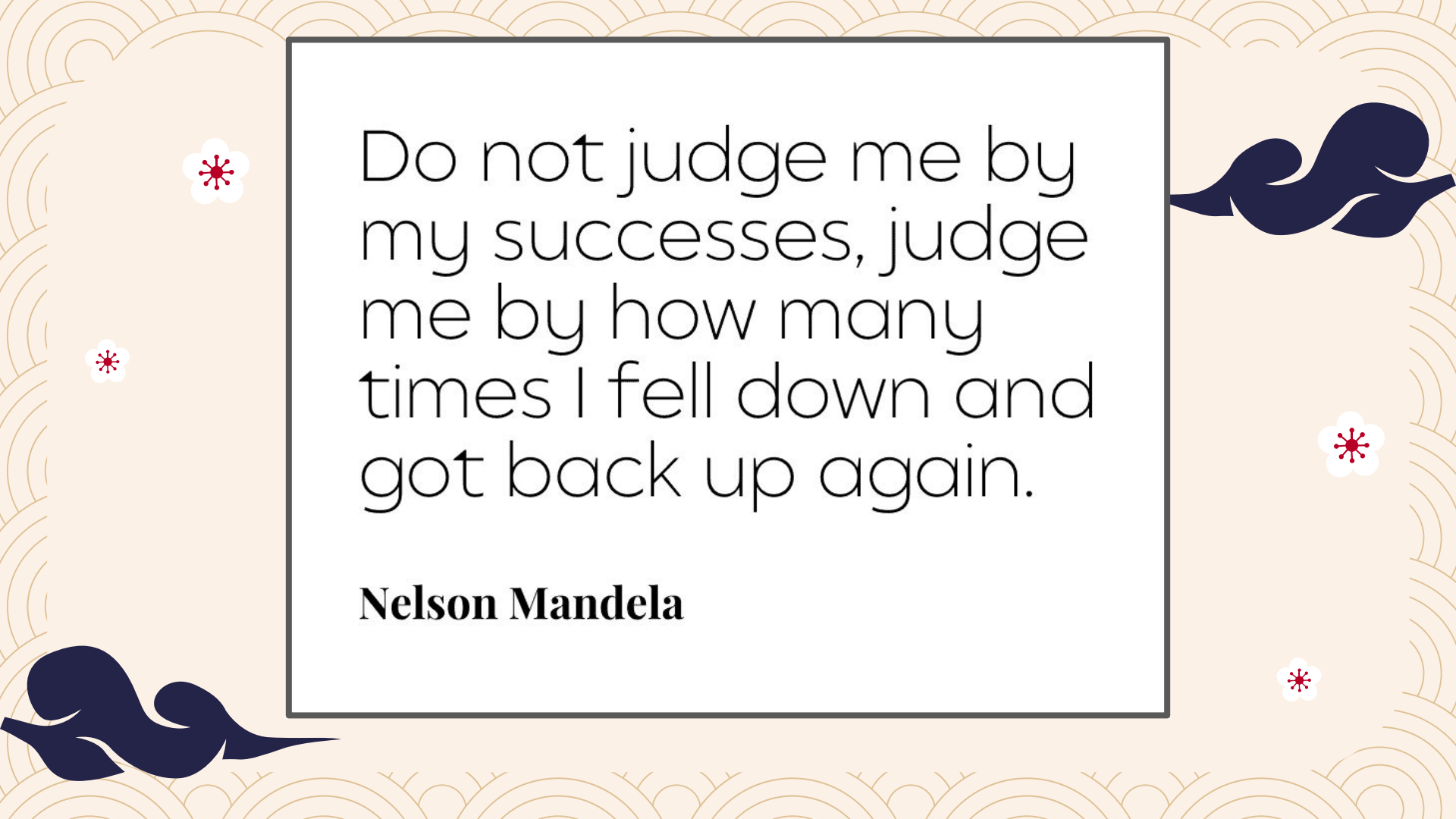


What are some of your peaks & valleys?

- What did you learn during the switchbacks of your life (personally and professionally?)
- Where can you pause along your “journey” to celebrate the mini accomplishments?
- What can you celebrate now that you’re not climbing or falling?

Where was
your voice
& choice?
Where wasn't
it?





Do not judge me by
my successes, judge
me by how many
times I fell down and
got back up again.

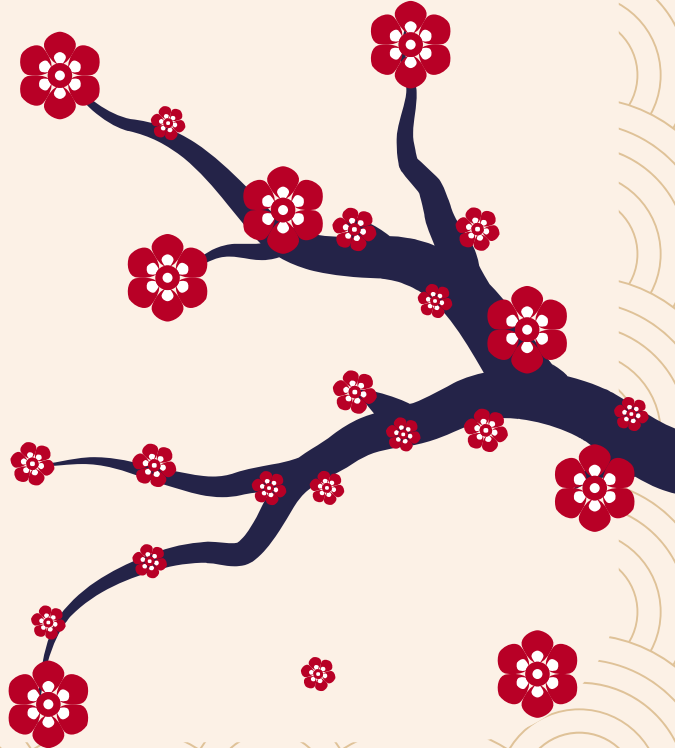
Nelson Mandela





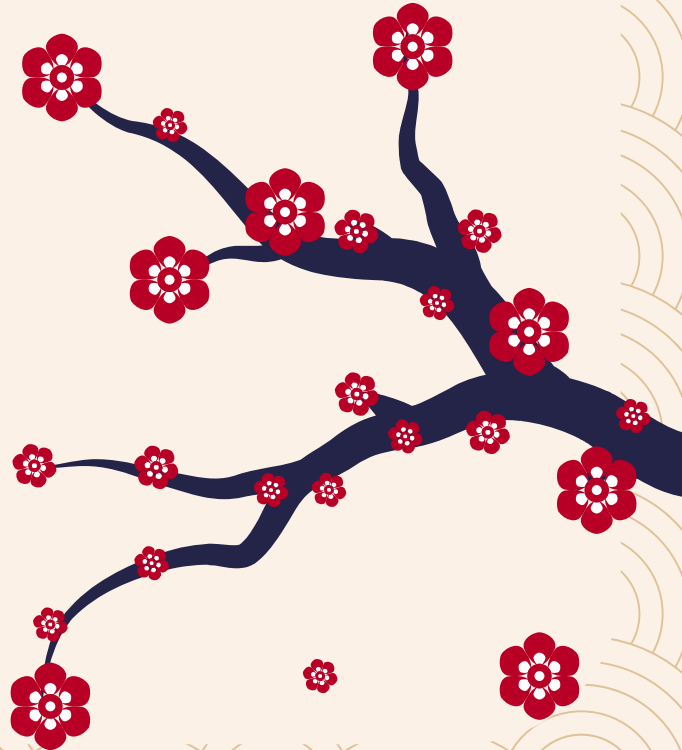
**FALLING IS
NOT FAILURE.**

**FALLING AND
NOT GETTING
BACK UP IS.**





NEVER LET
A STUMBLE IN
THE ROAD
BE THE END OF
THE JOURNEY

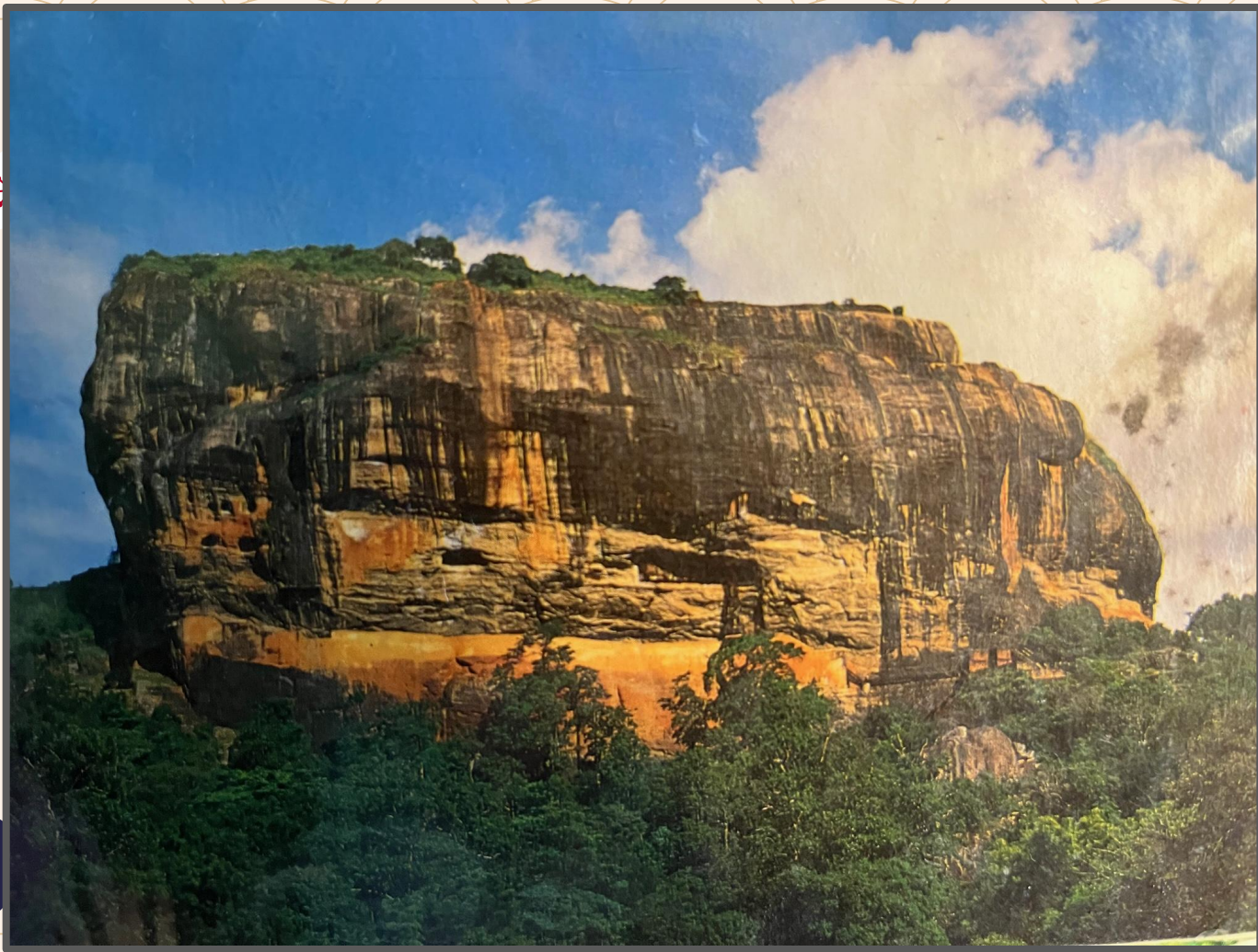




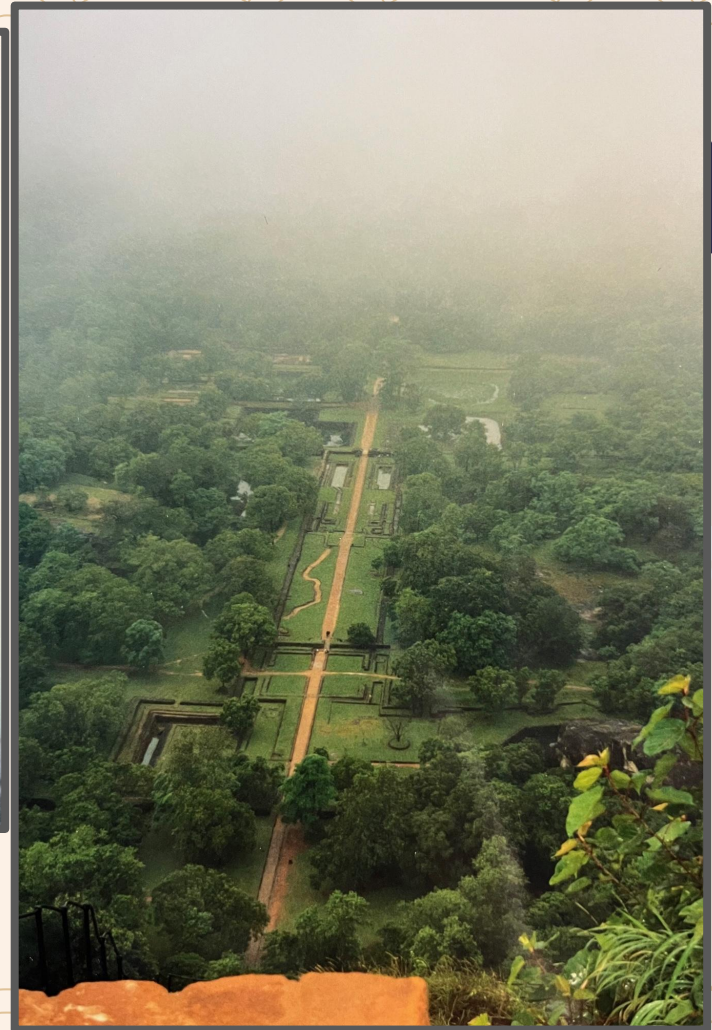
The Journey v. The Summit

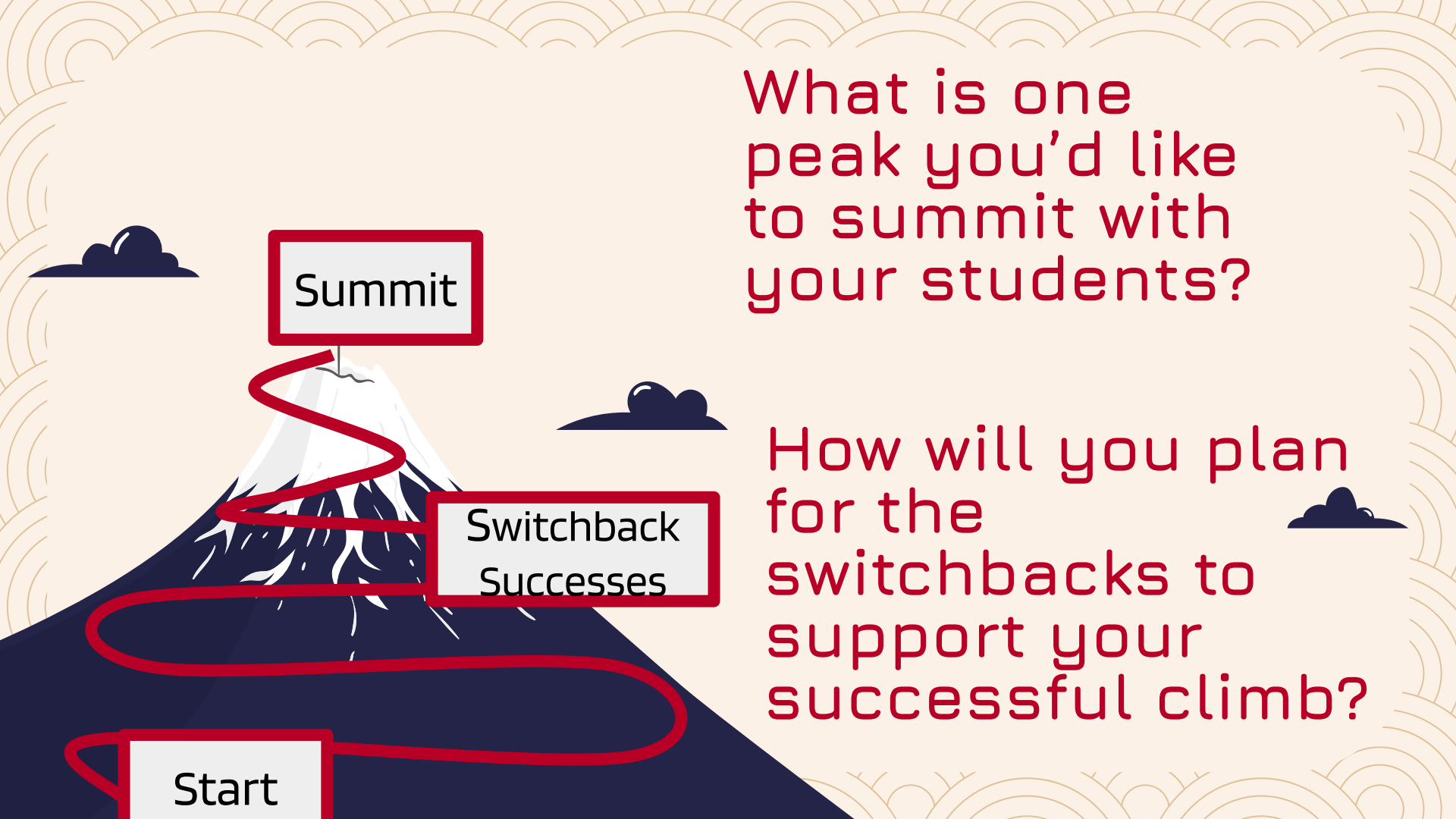












Summit

Switchback
Successes

Start

What is one
peak you'd like
to summit with
your students?

How will you plan
for the
switchbacks to
support your
successful climb?

Weather = attitude

Sun = warm relationships

Switchbacks = the school year w/ opportunities to celebrate (icons = assessment, reflections, feedback, portfolio evidence, etc.)

Backpack = strategies, materials, tools

Water & Snacks = professional development

Hiking Boots = highly qualified

Bear Spray = classroom management (haha!)

Walking Stick = supports

Map = scope and sequence/pacing/curriculum

Summit = standards

Other Peaks = choices to summit

Hiker = teachers and learners





Our
Choiceboards
for the Climb



We Have Choices. Make Good Ones.

Planning Your 2024-2025 Hikes

**What peaks do you
want to hike?**

Which are safe? Which
will be a challenge?
Which one first?
What supplies do you
need?


**Who do you
want to take
on the hike?**

Who's available?
Who needs the hike?
Who will need
support?
Who will you need to
keep up with?

**What photos do
you want to take?**

Which switchbacks make
good documentation
opportunities?
Which photos will be
selfies?
Which do you need to ask
someone to take?


Switchbacks to the Summit Choiceboards for EDU 222



Thoughts
to Ponder
Options &
Rubric



Learning
Outcomes
Review



Student
Presentations,
“Grades,” and
Student
Reflection

Get Climbing!

**There are
mountains
to climb!**

