

**Rushton
Elementary School**
6001 W. 52nd St. Mission,
KS

CONSTRUCTION UPDATE TODAY'S DATE 06/21/2024

OWNER: Shawnee Mission School
District

ARCHITECT: incite Design Studio

CM: JE DUNN

CURRENT PROGRESS

- Corridor Floor Polishing
- Area A Casework Installation
- Area A Final Paint
- Landscaping on North side
- Pre-Punch Activities in Area D

2 WEEK LOOK AHEAD

- Concrete Polishing
- Pre-Punch Areas A and B
- Circle Drive Paving
- Owner/Design Team Punch Area D
- East Play Field Sidewalk

SHAWNEE MISSION SCHOOL DISTRICT
RUSHTON ELEMENTARY SCHOOL
OPENING FALL 2024



SMSD Rushton Elementary School



**Rushton
Elementary School**
6001 W. 52nd St. Mission,
KS



Corridor Concrete Polishing

== WE EXIST TO ==
ENRICH LIVES
»» THROUGH INSPIRED ««
PEOPLE AND PLACES



Courtyard Landscaping



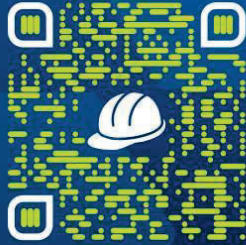
SMSD Rushton Elementary School





BUILDING THE FUTURE

A K-12 CONSTRUCTION EDUCATION INITIATIVE OF JE DUNN



BUILDINGTHEFUTURE.JEDUNN.COM



North Elevation

OWNER: Shawnee Mission School District

ARCHITECT: incite Design Studio

CM: JE DUNN



Area A Corridor



SMSD Rushton Elementary School



**Rushton
Elementary School**
6001 W. 52nd St. Mission,
KS

CONSTRUCTION UPDATE TODAY'S DATE 05/24/2024

OWNER: Shawnee Mission School
District

ARCHITECT: incite Design Studio

CM: JE DUNN

CURRENT PROGRESS

- Gym Floor Striping Ongoing
- Area A Casework Installation
- Area D 1st Floor Corridor Flooring
- Continued Sitework on North Side
- Fencing and Landscaping on South side

2 WEEK LOOK AHEAD

- Concrete Polishing
- Front Entrance Sidewalks
- Parking Lot Paving
- Area A Corridor Flooring
- Landscaping on North and East Sides

SHAWNEE MISSION SCHOOL DISTRICT
RUSHTON ELEMENTARY SCHOOL
OPENING FALL 2024



SMSD Rushton Elementary School



**Rushton
Elementary School**
6001 W. 52nd St. Mission,
KS



SE Corner Fencing

== WE EXIST TO ==
ENRICH LIVES
»» THROUGH INSPIRED ««
PEOPLE AND PLACES



Courtyard Landscaping



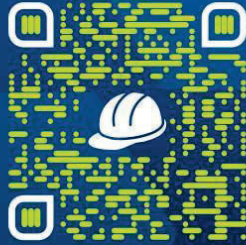
SMSD Rushton Elementary School





BUILDING THE FUTURE

A K-12 CONSTRUCTION EDUCATION INITIATIVE OF JE DUNN



BUILDINGTHEFUTURE.JEDUNN.COM



Gym Floor Striping

OWNER: Shawnee Mission School District

ARCHITECT: incite Design Studio

CM: JE DUNN



Cafeteria Storefront Framing



SMSD Rushton Elementary School



**Rushton
Elementary School**
6001 W. 52nd St. Mission,
KS

CONSTRUCTION UPDATE

TODAY'S DATE
3/15/2024

OWNER: Shawnee Mission School
District

ARCHITECT: incite Design Studio

CM: JE DUNN

CURRENT PROGRESS

- Area A Drywall Finishing
- Area B Ceilings Install
- Kitchen Epoxy Flooring Install
- Gym Equipment & Tectum Install
- Area A Tile & Casework Install
- Exterior Sidewalk Install

2 WEEK LOOK AHEAD

- Area A Painting
- Area B Casework Install
- Topping Slab Install
- Gym Floor Install
- Area D Ceiling Tile Install
- Area D Flooring Install

SHAWNEE MISSION SCHOOL DISTRICT
RUSHTON ELEMENTARY SCHOOL
OPENING FALL 2024



SMSD Rushton Elementary School



Rushton
Elementary School
6001 W. 52nd St. Mission,
KS



Gym Installation Progress

== WE EXIST TO ==
ENRICH LIVES
»» THROUGH INSPIRED ««
PEOPLE AND PLACES



Area C Light Fixture Install



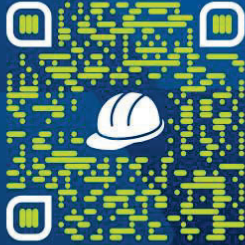
SMSD Rushton Elementary School





BUILDING THE FUTURE

A K-12 CONSTRUCTION EDUCATION INITIATIVE OF JE DUNN



BUILDINGTHEFUTURE.JEDUNN.COM

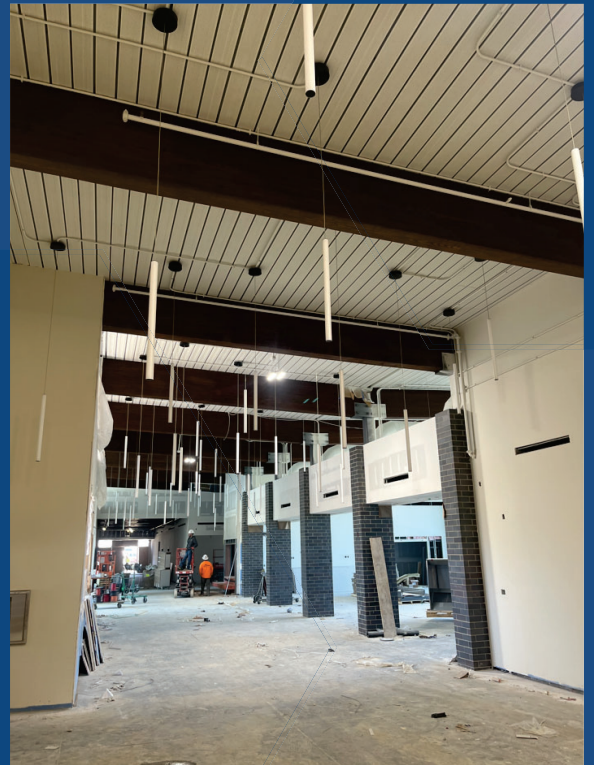


North Sidewalk Installation

OWNER: Shawnee Mission School District

ARCHITECT: incite Design Studio

CM: JE DUNN



Main Corridor Fixture Install



SMSD Rushton Elementary School



**Rushton
Elementary School**
6001 W. 52nd St. Mission,
KS

CONSTRUCTION UPDATE

TODAY'S DATE
3/01/2024

OWNER: Shawnee Mission School
District

ARCHITECT: incite Design Studio

CM: JE DUNN

CURRENT PROGRESS

- Area A Drywall Install
- Area A Exterior Window Install
- Area B Painting Ongoing
- Kitchen Epoxy Floor/wall Install
- Elevator Installed
- Area D Ceiling & Light Fixture Install

2 WEEK LOOK AHEAD

- Area A Drywall Finishing and Paint
- Area B Ceiling and Light Fixture Install
- Area C Ceiling and Light fixture Install
- Polished concrete topping slab
beginning 3/18
- Area D floor Install beginning 3/18

SHAWNEE MISSION SCHOOL DISTRICT
RUSHTON ELEMENTARY SCHOOL
OPENING FALL 2024



SMSD Rushton Elementary School



**Rushton
Elementary School**
6001 W. 52nd St. Mission,
KS

== WE EXIST TO ==
ENRICH LIVES
»» THROUGH INSPIRED ««
PEOPLE AND PLACES



Area D Ceiling Install



Area C Bathroom Tile Install



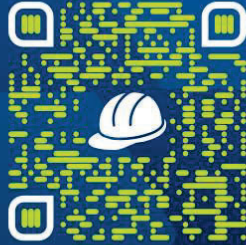
SMSD Rushton Elementary School





BUILDING THE FUTURE

A K-12 CONSTRUCTION EDUCATION INITIATIVE OF JE DUNN



BUILDINGTHEFUTURE.JEDUNN.COM



Media Center Curtain Wall Progress

OWNER: Shawnee Mission School District

ARCHITECT: incite Design Studio

CM: JE DUNN



Outdoor Classroom Progress



SMSD Rushton Elementary School



**Rushton
Elementary School**
6001 W. 52nd St. Mission,
KS

CONSTRUCTION UPDATE

TODAY'S DATE
1/18/2024

OWNER: Shawnee Mission School District

ARCHITECT: incite Design Studio

CM: JE DUNN

CURRENT PROGRESS

- Area D Drywall Finishing
- Area D Rooftop Condition Units have been Turned on
- Area A Framing Ongoing
- Area A Overhead MEP ongoing

2 WEEK LOOK AHEAD

- Area D paint beginning 1/22/2024
- Area C Drywall Install
- Cafeteria Curtain wall Install
- Exterior masonry continuing

SHAWNEE MISSION SCHOOL DISTRICT
RUSHTON ELEMENTARY SCHOOL
OPENING FALL 2024



SHAWNEE MISSION
SCHOOL DISTRICT

JEDUNN
CONSTRUCTION

ids incite Design Studio



SMSD Rushton Elementary School

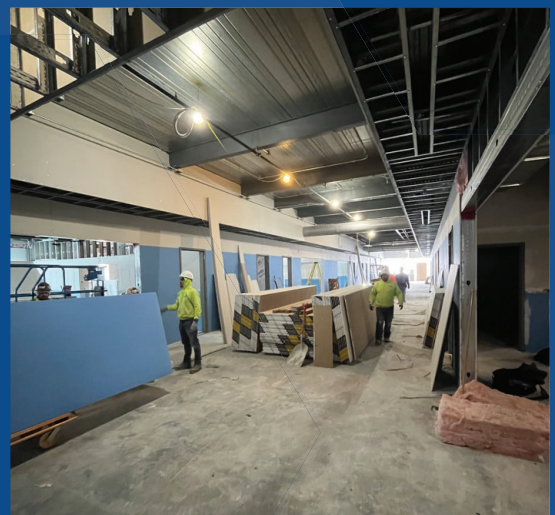


**Rushton
Elementary School**
6001 W. 52nd St. Mission,
KS



Exterior Masonry & Stone Install

== WE EXIST TO ==
ENRICH LIVES
»» THROUGH INSPIRED ««
PEOPLE AND PLACES



Area D level 1 Drywall



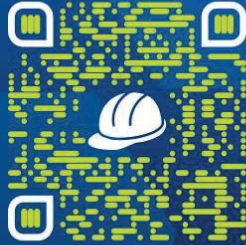
SMSD Rushton Elementary School





BUILDING THE FUTURE

A K-12 CONSTRUCTION EDUCATION INITIATIVE OF JE DUNN



BUILDINGTHEFUTURE.JEDUNN.COM

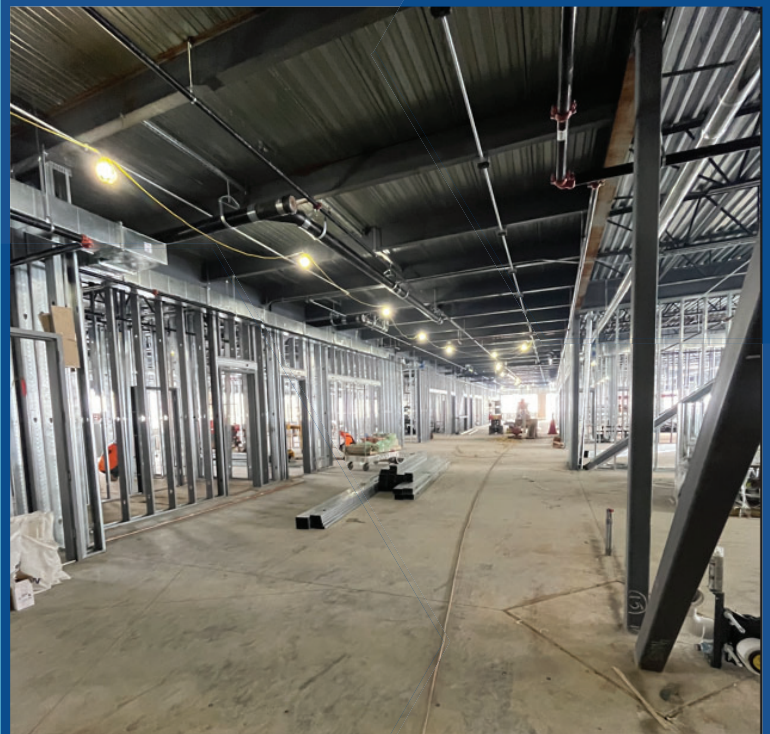


Wachter level 2 Drywall Finishing

OWNER: Shawnee Mission School District

ARCHITECT: incite Design Studio

CM: JE DUNN



Area A Framing & Overhead MEP Progress



SMSD Rushton Elementary School



**Rushton
Elementary School**
6001 W. 52nd St. Mission,
KS

CONSTRUCTION UPDATE

TODAY'S DATE
12/18/2023

OWNER: Shawnee Mission School District

ARCHITECT: incite Design Studio

CM: JE DUNN

CURRENT PROGRESS

- Roof Completion
- Area A Overhead MEP
- Area D/C Exterior Glass Install
- Area B Masonry Install

2 WEEK LOOK AHEAD

- Area A Interior Framing
- Area A Masonry Install
- Turn on HVAC in Area D/C
- Drywall Area D/C

SHAWNEE MISSION SCHOOL DISTRICT
RUSHTON ELEMENTARY SCHOOL
OPENING FALL 2024



SHAWNEE MISSION
SCHOOL DISTRICT

JEDUNN
CONSTRUCTION

ids incite Design Studio



SMSD Rushton Elementary School



**Rushton
Elementary School**
6001 W. 52nd St. Mission,
KS



Area D Masonry Completed

== WE EXIST TO ==
ENRICH LIVES
»» THROUGH INSPIRED ««
PEOPLE AND PLACES



Area D Drywall Install start



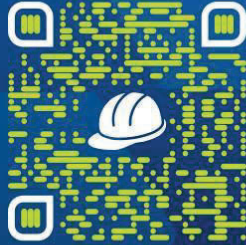
SMSD Rushton Elementary School





BUILDING THE FUTURE

A K-12 CONSTRUCTION EDUCATION INITIATIVE OF JE DUNN



BUILDINGTHEFUTURE.JEDUNN.COM



Area C/B masonry

OWNER: Shawnee Mission School District

ARCHITECT: incite Design Studio

CM: JE DUNN



Area A Overhead MEP



SMSD Rushton Elementary School















**Rushton
Elementary School**
6001 W. 52nd St. Mission,
KS

CONSTRUCTION UPDATE

TODAY'S DATE
9/15/2023

OWNER: Shawnee Mission School District

ARCHITECT: incite Design Studio

CM: JE DUNN

CURRENT PROGRESS

- Approaching completion of Area D roof
- Approaching completion of exterior framing/sheathing
- Area D Overhead MEP
- Begin Masonry and Stone Install

2 WEEK LOOK AHEAD

- Begin area C roof install
- Continue masonry install
- Area D Door Frame Install
- Area D Interior Framing Install

SHAWNEE MISSION SCHOOL DISTRICT
RUSHTON ELEMENTARY SCHOOL
OPENING FALL 2024



SHAWNEE MISSION
SCHOOL DISTRICT

JEDUNN
CONSTRUCTION

ids incite Design Studio



SMSD Rushton Elementary School



**Rushton
Elementary School**
6001 W. 52nd St. Mission,
KS



Area D Overhead MEP

== WE EXIST TO ==
ENRICH LIVES
»» THROUGH INSPIRED ««
PEOPLE AND PLACES



Area D Roof Progress



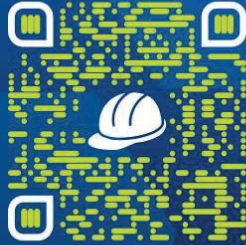
SMSD Rushton Elementary School





BUILDING THE FUTURE

A K-12 CONSTRUCTION EDUCATION INITIATIVE OF JE DUNN



BUILDINGTHEFUTURE.JEDUNN.COM



Area A/B Exterior Framing Progress

OWNER: Shawnee Mission School District

ARCHITECT: incite Design Studio

CM: JE DUNN



Masonry & Stone Progress



SMSD Rushton Elementary School



Hocker Grove Middle School WEEKLY PROGRESS REPORT 09/15/2023



Concrete Bench



Courtyard Sidewalk

This Week: 09/11/23—09/15/23

- Completed Courtyard Concrete & Flatwork
- Completed Storefront Install in Front Office
- Continued MEP Rough-In at Auxiliary Classroom
- Continued Metal Panel Install at Front Entrance
- Continued Storefront Install at Addition

Next Week: 09/18/23—09/22/23

- Complete Storefront Window Install at Addition
- Continue MEP Rough-In at Addition
- Continue Metal Panel Install at Front Entrance
- Begin Painting Steel at Addition



MEP Rough-In at Addition



Addition Storefront Framing

Hocker Grove Middle School WEEKLY PROGRESS REPORT 09/08/2023



Concrete Bench



Courtyard Storefront Window Framing

This Week: 09/04/23—09/08/23

- Completed Courtyard Concrete & Flatwork
- Continued MEP Rough-In at Auxiliary Classroom
- Continued Metal Panel Install at Front Entrance
- Began Storefront Window Install at Addition

Next Week: 09/11/23—09/15/23

- Continue MEP Rough-In at Auxiliary Classroom
- Continue Metal Panel Install at Front Entrance
- Continue Storefront Window Install at Addition
- Begin Storefront Install in Front Office



MEP Rough-In at Addition Ceiling



Addition Storefront Window Framing

**Rushton
Elementary School**
6001 W. 52nd St. Mission,
KS

CONSTRUCTION UPDATE 8.18.23

OWNER: Shawnee Mission School District

ARCHITECT: incite Design Studio

CM: JE DUNN

CURRENT PROGRESS

- Begin and continue exterior framing in Area D
- Finish install of Area A structural steel
- Pour Gym slab on grade
- Continue roof deck installation in Area A and B
- Begin roof and window blocking in Area D

2 WEEK LOOK AHEAD

- Begin air barrier installation in Area D
- Begin Brick installation in Area D
- Prep for roofing installation in Area D
- Continue exterior framing to Area C

SHAWNEE MISSION SCHOOL DISTRICT
RUSHTON ELEMENTARY SCHOOL
OPENING FALL 2024



SHAWNEE MISSION
SCHOOL DISTRICT

JEDUNN
CONSTRUCTION

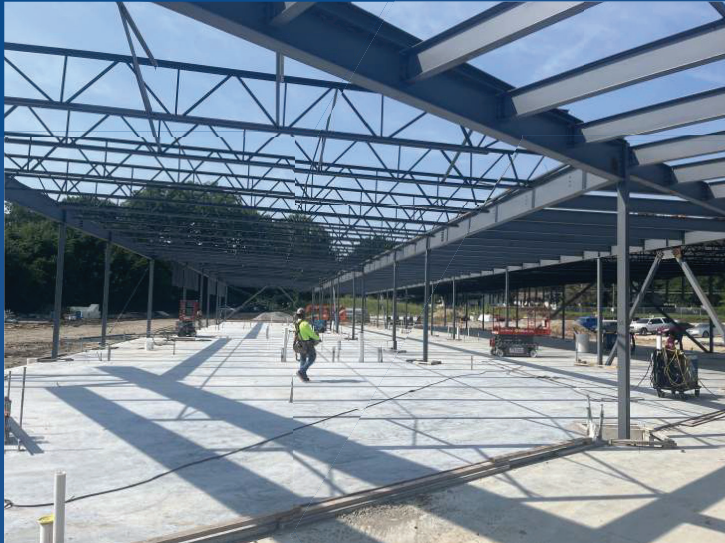
ids incite Design Studio



SMSD Rushton Elementary School



**Rushton
Elementary School**
6001 W. 52nd St. Mission,
KS



Area A Structural Steel progress

== WE EXIST TO ==
ENRICH LIVES
»» THROUGH INSPIRED ««
PEOPLE AND PLACES



Upper level Area D



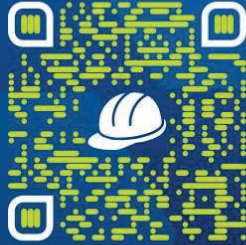
SMSD Rushton Elementary School





BUILDING THE FUTURE

A K-12 CONSTRUCTION EDUCATION INITIATIVE OF JE DUNN



BUILDINGTHEFUTURE.JEDUNN.COM



Gym slab on grade pour

OWNER: Shawnee Mission School District

ARCHITECT: incite Design Studio

CM: JE DUNN



West side of Area D sheathing



SMSD Rushton Elementary School



**Rushton
Elementary School**
6001 W. 52nd St. Mission,
KS

CONSTRUCTION UPDATE 07.21.23

OWNER: Shawnee Mission School
District

ARCHITECT: incite Design Studio

CM: JE DUNN

CURRENT PROGRESS

- Completed structural steel framing in Area D
- Started Area A Structural Steel
- Completed GluLam beam installation
- Completed Area D slab on deck

2 WEEK LOOK AHEAD

- Begin metal stud framing in Area D
- Begin wood blocking and sheathing in Area D
- Continue Structural Steel in Area A
- Begin air barrier in Area D
- Prep for brick installation in Area D
- Continue metal decking installation in Area C & B

SHAWNEE MISSION SCHOOL DISTRICT
RUSHTON ELEMENTARY SCHOOL
OPENING FALL 2024



SHAWNEE MISSION
SCHOOL DISTRICT

JEDUNN
CONSTRUCTION

ids incite Design Studio



SMSD Rushton Elementary School



**Rushton
Elementary School**
6001 W. 52nd St. Mission,
KS



Area D Slab on Deck Preparation

== WE EXIST TO ==
ENRICH LIVES
»» THROUGH INSPIRED ««
PEOPLE AND PLACES



GluLam Beam Install



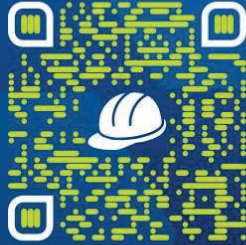
SMSD Rushton Elementary School





BUILDING THE FUTURE

A K-12 CONSTRUCTION EDUCATION INITIATIVE OF JE DUNN



BUILDINGTHEFUTURE.JEDUNN.COM



PHOTO DESCRIPTION & LOCATION

OWNER: Shawnee Mission School District

ARCHITECT: incite Design Studio

CM: JE DUNN



Structural Steel in Area C & D



SMSD Rushton Elementary School



**Rushton
Elementary School**
6001 W. 52nd St. Mission,
KS

CONSTRUCTION UPDATE

TODAY'S DATE
07/07/2023

OWNER: Shawnee Mission School District

ARCHITECT: incite Design Studio

CM: JE DUNN

CURRENT PROGRESS

- Pour north half of Area A
- Continue structural steel install in D/C/B
- Complete MEP underground in Area A

2 WEEK LOOK AHEAD

- Install Glulam beams in Area B
- Pour remaining slab of Area A
- Begin structural steel in Area A
- Begin structural steel framing in Area D
- Prep for slab on deck in Area D

SHAWNEE MISSION SCHOOL DISTRICT
RUSHTON ELEMENTARY SCHOOL
OPENING FALL 2024



SMSD Rushton Elementary School



**Rushton
Elementary School**
6001 W. 52nd St. Mission,
KS



Slab Pour Area A

== WE EXIST TO ==
ENRICH LIVES
>>> THROUGH INSPIRED <<<
PEOPLE AND PLACES



Area D Structural Steel (looking west)



SMSD Rushton Elementary School



**Rushton
Elementary School**
6001 W. 52nd St. Mission,
KS



Area C Structural Steel

SAFETY
EVERYONE.
EVERYWHERE.
ALL THE TIME.



Area C/D Structural Steel



SMSD Rushton Elementary School



**Rushton
Elementary School**
6001 W. 52nd St. Mission,
KS

CONSTRUCTION UPDATE

TODAY'S DATE
06/23/2023

OWNER: Shawnee Mission School District

ARCHITECT: incite Design Studio

CM: JE DUNN

CURRENT PROGRESS

- Completed Gym Precast Installation
- Continued Area D and Area C Structural Steel
- Completed All Concrete Footings.
- Began Underground MEP in Area A
- Completed the Last Recessed Slab Pour

2 WEEK LOOK AHEAD

- Continue Structural Steel in Area D and Area C
- Complete MEP Underground in Area A
- Complete the Slab-on-Grade Pours in Area A and Area B
- Begin Underground MEP in the Gym

SHAWNEE MISSION SCHOOL DISTRICT
RUSHTON ELEMENTARY SCHOOL
OPENING FALL 2024



SMSD Rushton Elementary School



**Rushton
Elementary School**
6001 W. 52nd St. Mission,
KS



Precast GYM & FEMA Shelter

== WE EXIST TO ==
ENRICH LIVES
»» THROUGH INSPIRED ««
PEOPLE AND PLACES



Area C Structural Steel



SMSD Rushton Elementary School



**Rushton
Elementary School**
6001 W. 52nd St. Mission,
KS



Area D Structural Steel

SAFETY
EVERYONE.
EVERYWHERE.
ALL THE TIME.



Area B Slab-on-Grade Prep.



SMSD Rushton Elementary School



**Rushton
Elementary School**
6001 W. 52nd St. Mission,
KS

CONSTRUCTION UPDATE

TODAY'S DATE
04/26/2024

OWNER: Shawnee Mission School
District

ARCHITECT: incite Design Studio

CM: JE DUNN

CURRENT PROGRESS

- Gym Flooring Installation
- Area A Casework Installation
- Installing Kitchen Equipment
- Continued Sitework in the Courtyard
- Overhead Inspection Areas A, B & C.

2 WEEK LOOK AHEAD

- Area A Ceiling Tile
- Area B Admin Flooring
- Area A Casework Install
- Lower Area D Flooring Install
- Kitchen Equipment Install

SHAWNEE MISSION SCHOOL DISTRICT
RUSHTON ELEMENTARY SCHOOL
OPENING FALL 2024



SMSD Rushton Elementary School

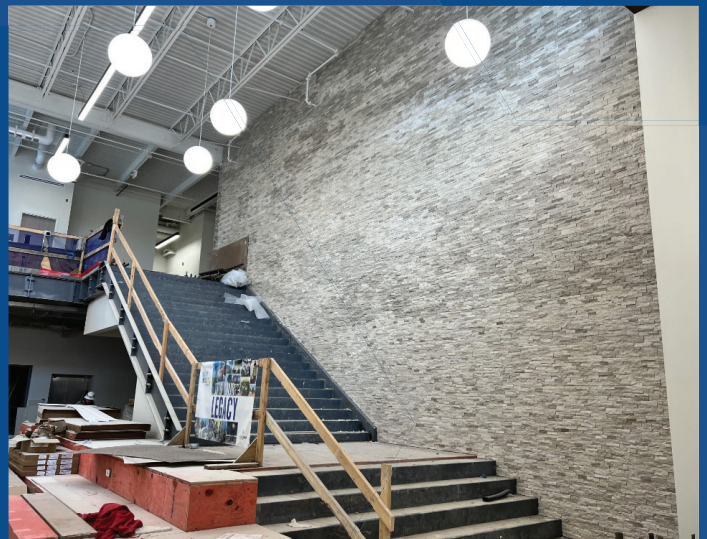


**Rushton
Elementary School**
6001 W. 52nd St. Mission,
KS



Gym Flooring

== WE EXIST TO ==
ENRICH LIVES
»» THROUGH INSPIRED ««
PEOPLE AND PLACES



Stone Tile Wall Monumental Stair



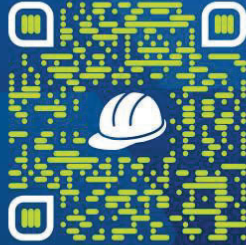
SMSD Rushton Elementary School





BUILDING THE FUTURE

A K-12 CONSTRUCTION EDUCATION INITIATIVE OF JE DUNN



BUILDINGTHEFUTURE.JEDUNN.COM



Kitchen Equipment Install

OWNER: Shawnee Mission School District

ARCHITECT: incite Design Studio

CM: JE DUNN



Media Center AC1



SMSD Rushton Elementary School



**Rushton
Elementary School**
6001 W. 52nd St. Mission,
KS

CONSTRUCTION UPDATE

TODAY'S DATE
05/10/2024

OWNER: Shawnee Mission School
District

ARCHITECT: incite Design Studio

CM: JE DUNN

CURRENT PROGRESS

- Gym Flooring Finish Ongoing
- Area A Casework Installation
- Installing Kitchen Equipment
- Continued Sitework in the Courtyard
- Flooring in Admin and Media Center

2 WEEK LOOK AHEAD

- Area A Flooring
- Asphalt on West and East Sides
- Area A Doors and Hardware
- Gym Floor Striping
- North Side Sidewalk

SHAWNEE MISSION SCHOOL DISTRICT
RUSHTON ELEMENTARY SCHOOL
OPENING FALL 2024



SMSD Rushton Elementary School



**Rushton
Elementary School**
6001 W. 52nd St. Mission,
KS



Admin Flooring

== WE EXIST TO ==
ENRICH LIVES
»» THROUGH INSPIRED ««
PEOPLE AND PLACES



Gym Floor Finsihing



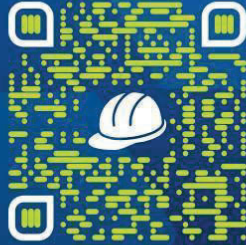
SMSD Rushton Elementary School





BUILDING THE FUTURE

A K-12 CONSTRUCTION EDUCATION INITIATIVE OF JE DUNN



BUILDINGTHEFUTURE.JEDUNN.COM



Media Center Flooring

OWNER: Shawnee Mission School District

ARCHITECT: incite Design Studio

CM: JE DUNN



Bathroom Accessories Installation



SMSD Rushton Elementary School

