



Long-Range Facilities Planning Committee



Long-Range Facilities Planning Committee Meeting #2 February 27, 2024

Dr. Ken Helvey, Senior Associate
Jenny Preston, Senior Associate



Welcome & Find Your Team

Getting to Know Tonight's Teammates

*Share with your team one fact you learned from
our last meeting that you believe the community
needs to know...*

Tonight's Outcomes

- Review follow-up information
- Connect Celina ISD Core Principles & Learner Experience with Key Decision Points
- Prepare for our research and district tours

Agenda

- Review Our Charge and Norms
- Review Our Core Principles
- Requests for Information/What Have We Left Out?
- Our Learner Experience
- Rubrics & Facility Tours
- Interest Group Sign-ups
- Requests for Information (RFI)
- Homework & Next Steps

Our Charge

Explore what our district is to become by providing direction on programs and aligning a facility plan that supports the community's vision.

What do we want to become?

Norms

- Be fully present at the meetings and be attentive to behaviors which affect physical and mental engagement
- Invite and welcome contributions of every member and listen to each other
- Strive to achieve consensus
- Be respectful to all
- Silence your cell phone



Celina Independent School District

THE LEARNER EXPERIENCE

Love the learner; drive the rigor

Minimum one year's growth

Responsibility for one's own learning

Aware of one's own strengths and actively seeks learning opportunities

Interdependent self-managers

Aware of one's own self-worth and recognizes the worth of every person

Systems - Structure - Scaffolding - Accountability

Areas and Key Decisions

- ❑ Early Childhood Education
- ❑ STEM/STEAM and CTE
- ❑ Elementary Models
- ❑ Professional Development Space
- ❑ Family/Welcome Center
- ❑ Community Rooms
- ❑ Fine Arts/Fine Arts Facilities
- ❑ Athletics Competition Space
- ❑ Administration Space
- ❑ Additional MS & HS Recommendations

Request for Information

What did we leave off

- Other sports besides football
 - A new gym
 - Arena x2
 - Natatorium x 3 (swim lanes)
 - Softball fields
 - Large district stadium that includes building in the end zone – banquet – creating complex that knocks a lot off the list



Request for Information

What did we leave off

- Multi-use spaces rather than spaces reserved only for things like professional development
 - Room in the other facility for graduation and parents to sit and listen to concerts
- Transportation center(s) – current site too small and going away
- Tech/Data Center
- Technology needs

A satellite map of Celina, Ohio, with a yellow line indicating a route. The route starts at the top left, goes south on a road labeled 'St', then turns east onto a road labeled 'le St'. It continues east, passing 'Celina Primary School' and 'Celina High School Baseball Field'. It then turns south, passing 'CISD Transportation Department' and 'Celina Star Cafe'. The route ends at a road labeled '455', where 'Lamar National Bank' is located. Other landmarks include 'Animal Hospital of Celina' at the top and 'Milestones Therapy, PLLC' on the left. A large green field is visible on the right side of the map.

This aerial view shows the proposed layout for Centennial Park, overlaid on a photograph of the site. The park is bounded by East Walnut Street to the north, East Main Street to the west, East Ash Street to the south, and Preston Road to the east. Key features include a large green field (1), a blue pool (2), a playground (3), and various buildings (4, 5, 6, 7, 8, 9, 10, 11, 12, 13, 14, 15, 16). The layout is surrounded by green landscaping and parking areas. The streets shown are East Walnut Street, East Main Street, South New Mexico Drive, South Arkansas Drive, East Ash Street, West F.M. 455, and Preston Road.

Unlocking Potential in
Every Space, Every Place

NORTH6

Animal Hospital of Celina

Celina Primary School

Celina High School Baseball Field

CISD Transportation Department

Celina Star Cafe

Lamar National Bank

455

LYNN STAMBAUGH PARKWAY

Planned Office and Retail

PRESTON ROAD

Planned Single Family
North6 Luxury Estates
\$2 to \$5 million

Planned Single Family
Cattleman's Crossing
112 Lots
\$1 to \$3 million

455 FARM ROAD

4

Planned Single Family
North6 Luxury Estates
\$2 to \$5 million

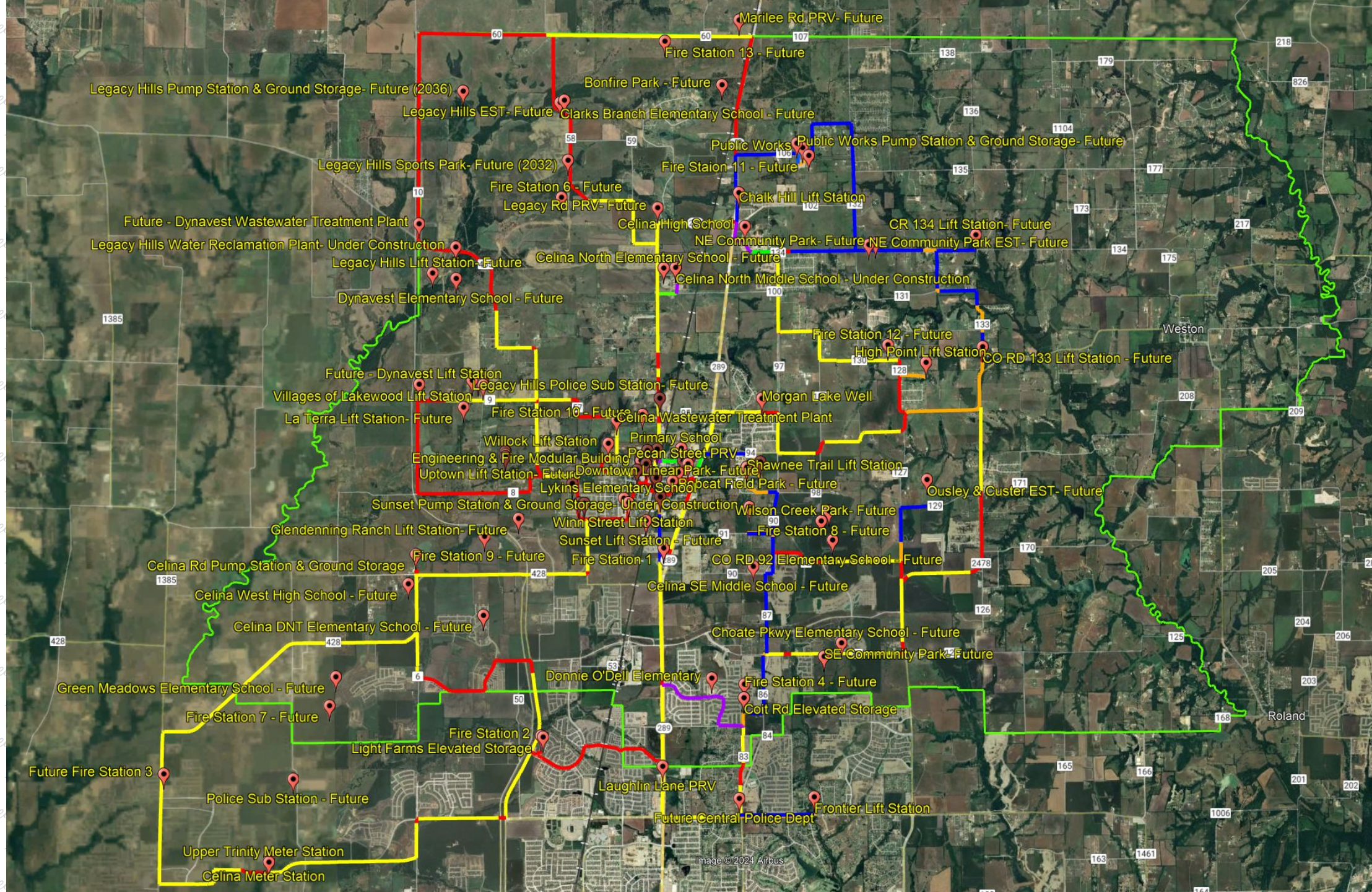
Planned Office and Retail

**Planned Single Family
Cattleman's Crossing
112 Lots
\$1 to \$3 million**



Possibilities for Pecan/Preston Corner

- Other sports besides football
 - A new gym/Arena x2
 - Natatorium x 3 (swim lanes)
 - Softball fields/Rec facilities
 - Large district stadium that knocks a lot off the list
- Multi-use spaces rather than spaces reserved only for things like professional development
- Transportation center(s)
- Tech/Data Center/Technology needs

[illegible]

A vertical bar chart consisting of four stacked rectangular segments. From top to bottom, the colors are orange, blue, green, and red. The segments are separated by thin white lines. The orange segment is the tallest, followed by the blue segment, then the green segment, and the red segment is the shortest.

[illegible]

A vertical bar chart consisting of four stacked rectangular segments. From top to bottom, the colors are orange, blue, green, and red. The segments are separated by thin white lines. The orange segment is the tallest, followed by the blue segment, then the green segment, and the red segment is the shortest.

Request for Information

What did we leave off

- Early childhood options – not just qualified
 - Have pre-school in high school with CTE – with “Ready. Set, Teach” – (Plano ISD has this)
- SPED facilities
 - Creating a special classroom for autism or a hybrid-homeschool curriculum
 - SPED/504 services/accommodations
 - Consider special pops and service provider needs

Request for Information

What did we leave off

- HS upgrades
 - Cafeteria
 - Tech programs/coding
 - CTE center – each high school – home economics, life skills classes
 - Pulling practices for fine arts performances will be an issue for sizing for all programs
 - Thinking bigger, more interactive ideas for CTE programs like culinary arts – restaurant is nice
 - CTE center at each high school – HVAC, plumbing, electrician, automotive

As a table, what is one thing you would like to tell your circle of friends about what you learned tonight?

Rubrics & Facility Tours

Community is...

- Honoring Bobcat achievements
- Providing a supportive atmosphere
- Uniting stakeholders

Yes	No

In what ways does this facility support Community?

Excellence is...

- Championing what is best for every student to achieve success
- Valuing passionate professionals with a growth mindset
- Streamlining processes across campuses

Yes	No

In what ways does this facility support Excellence?

Innovation is...

- Cultivating forward thinking
- Providing a wide range of tools and resources
- Creating paths for success

Yes	No

In what ways does this facility support Innovation?

Leadership is...

- Growing and empowering servant leaders at every level
- Collaborating and sharing leadership opportunities
- Communicating intentionally, transparently and effectively with stakeholders

Yes	No

In what ways does this facility support Leadership?

Stewardship is...

- Keeping every student at the center of decisions
- Strategically planning and providing time to implement programs with fidelity
- Engaging every student with mentorship opportunities and community involvement

Yes	No

In what ways does this facility support Stewardship?

The Learner Experience

Love the learner; drive the rigor

Responsibility for one's own learning

Interdependent self-managers

System-Structures-Scaffolding-Accountability

How do our facilities compliment
the learner experience?



Process and Timeline

- Feb. 13 - District Overview, Demographics and Process
- Feb. 27 - Research Process
- Feb. 28 - April 8 - Research and District Facility Tours
- April 9 - District Facility Tour Reports
- April 23 - Consensus on Recommendations
- May 7 - Continue Consensus and Finalize Recommendations

Requests for Information

- Send questions and or requests for information (RFI's) to **KarenCantrell@celinaisd.com**
- Staff reviews questions/RFI's for clarification
- Responses will be shared with committee before next meeting
- This process will be followed after each meeting

Homework/Next Steps

- Review and reflect on the information presented today
- Send any additional questions, comments or RFIs to Karen
- Next meeting is April 9
- High-five your table mates & Wear the C