

# HEAD LICE INFORMATION

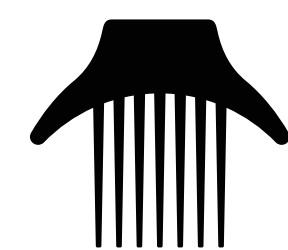
## Where do Head Lice Come From?

Head lice crawl from one head to another. The most common method of transfer is by direct head contact between two people. It is very unlikely that they can be spread with just brief contact with an infested person.



## What are Head Lice?

- Head lice are small parasitic insects.
- Head lice live on or very close to the scalp and die within 24 hours away from a human host.
- They do not live on pets.
- They do not fly, jump, hop or swim.
- They infest people regardless of social and ethnic status.
- They are not an indication of poor hygiene.
- Nits are head lice eggs. They stick to the hair shaft.
- Nits can stay stuck to the hair shaft until it grows out.
- Nits are smaller than a pin head and look pearly white.
- Nits hatch at about 7 to 10 days.
- Head lice do not carry diseases.



## Signs and Symptoms of Head Lice

Tickling feeling of something moving in the hair

Itching & Scratching

Sores on head caused by excessive scratching

## Treating Head Lice

- Ask your local pharmacist or health care provider for advice on treatment options.
- Use all products as directed.
- Treat all members of the household who have live lice in their hair.
- Do not use any home remedies without approval from your doctor.

## To Prevent another Head Lice Infestation:

- Remove all the nits from hair. Nits may have to be removed by hand.
- Recheck head every day for 2-3 weeks.



## Supplemental Measures

Although head lice do not survive long if they fall off a person and cannot feed, you can follow these steps to help avoid re-infestation by lice that have recently fallen off the hair or crawled onto clothing or furniture.

- Machine wash clothing, bed linens, and items that the infested person wore or used during the 2 days before treatment. Dry items on hot cycle.
- Vacuum floors and furniture.
- Soak combs and hair brushes in hot water for 5-10 minutes.

## Returning To School

- The student will be re-examined by school staff to ensure live lice are no longer present when he/she returns to school.
- The student will be sent home if live lice are present when he/she returns to school.

Contact your school nurse if you have any specific questions or concerns about head lice.