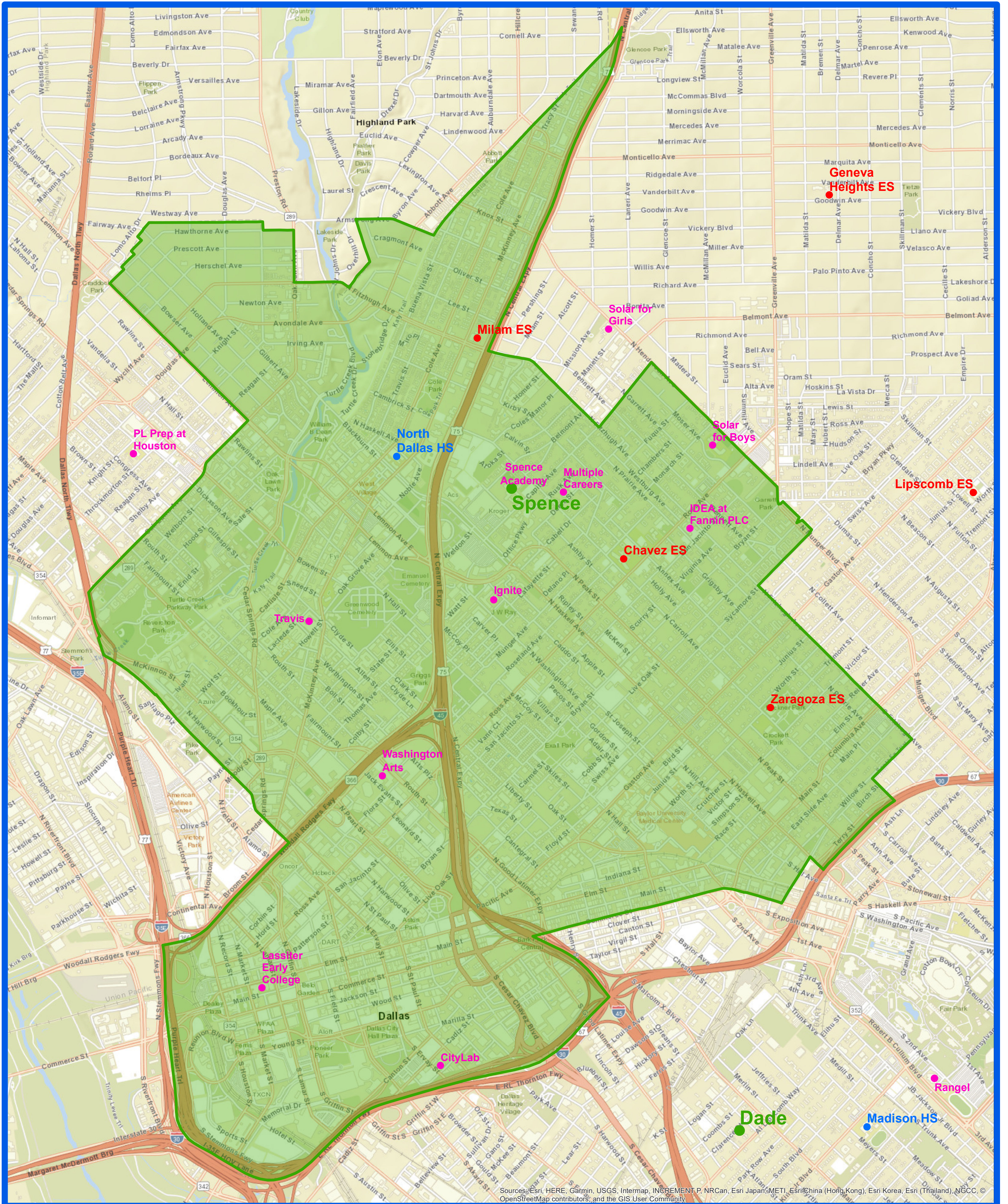


2018-19 Alex W. Spence Talented and Gifted Academy Attendance Zone Grades 6-8



Sources: Esri, HERE, Garmin, USGS, Intermap, INCREMENT P, NRCan, Esri Japan, METI, Esri China (Hong Kong), Esri Korea, Esri (Thailand), NGCC, © OpenStreetMap contributors, and the GIS User Community

Outer boundary of zones may include students living on both sides of the street.