

BOND 2020

“SUCCESS is a Project that’s always **UNDER CONSTRUCTION**”

DISTRICT 4 SCHOOLS

Presented by:



CONSTRUCTION SERVICES

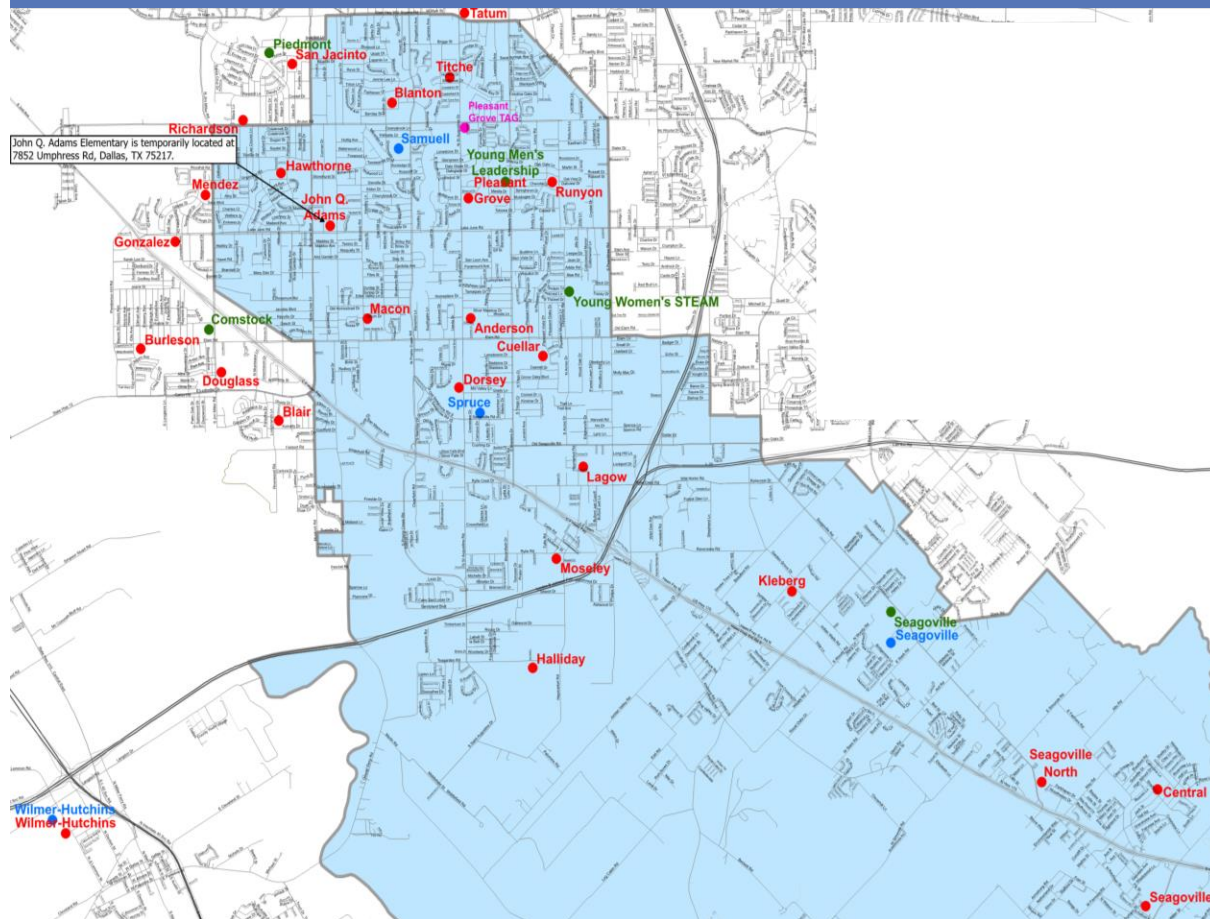
Brent Alfred, Chief Construction Officer
Mike Garcia, Executive Director

Agenda

- Welcome
- Introductions (Dallas ISD)
- District 4 Campus Sites
- Bond Investment In District 4
- Projected Area Growth in Seagoville and DISD Solutions
- Site Reviews
- Questions

DISTRICT 4 BOUNDARIES and SCHOOLS

Dallas ISD District 4 Trustee Camile D. White



ELEMENTARY SCHOOLS

John Q. Adams
William M. Anderson
Annie Webb Blanton
Central Elementary
Gilbert Cuellar Sr.
Julius Dorsey Leadership Academy
Ebby Halliday
Nathaniel Hawthorne
Kleberg
Richard Lagow
BH Macon
Nancy Moseley
Pleasant Grove
John W. Runyon
School for the Talented and Gifted Pleasant Grove
Seagoville
Seagoville North
Edward Titche

MIDDLE SCHOOLS

Seagoville Middle School
Young Men's Leadership at Fred Florence
Young Women's STEAM Academy at Balch Springs

HIGH SCHOOLS

W. W. Samuel
Seagoville High School
H. Grady Spruce

DISD District 4 2020 Bond Investment

\$343,851,237.90

AMOUNT OF MONEY ENCUMBERED IN DISTRICT 4 PROJECTS

Recently Completed:
Anderson
Central
Hawthorne
TAG Pleasant Grove

Construction:
Titche
Blanton
JQ Adams

Bidding, & City Review:
Samuell
YMLA Fred Florence
Seagoville
Spruce
Seagoville MS

Design:
Mosely
Dorsey
Runyon
Lagow
Kleberg

Bond Investment in District 4 H Grady Spruce High School

- **Budget:** \$52,000,000
- **Enrollment:** 1,528
- **Capacity:** 2,426
- **Competition Gym Addition**
- **Secure Vestibule and Admin. Renovation**
- **DISD Resource Center**
- **Site improvements**
- **Opening: Spring 2026**

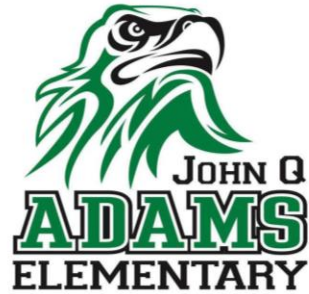


Bond Investment In District 4 W.W. Samuell High School

- Budget: \$31, 954, 475.00
- Enrollment: 1,910
- Capacity: 2,331
- Secure vestibule, cameras, card readers
- New Competition Gym/Storm Shelter Addition with locker and training rooms
- Select HVAC upgrades
- Partial roof replacement and related MEP work
- New Fire Alarm
- Site Improvements
- Opening: Spring 2026



Bond Investment in District 4 John Quincy Adams Elementary



- **Budget:** \$44,651,220.00
- **Enrollment:** 1676
- **Capacity:** 2426
- **Opens August 2024**



Bond Investment in District 4 Young Men's Leadership Academy at Fred Florence

- **Budget:** \$15,672, 475.00
- **Enrollment:** 1676
- **Capacity:** 2426
- **Kitchen Addition Opening: August 2025**



BOND 2020

“SUCCESS is a Project that’s always **UNDER CONSTRUCTION**”

SEAGOVILLE AREA SCHOOLS

Presented by:



CONSTRUCTION SERVICES

Brent Alfred, Chief Construction Officer
Mike Garcia, Executive Director

Seagoville Area

Projected Growth

TEA ORG #	SCHOOLS	ACREAGE	BUILDING SQ. FT.	YEAR BUILT	CRI	FCI	+Current Capacity	21-22 Enrollment	Current Enrollment	With 6 Grade Enrollment	With up to Grade 8	With New ES Relief ^	10 Year Growth Projection
126	CENTRAL	11.36	41,865	1987	28	54	633	502	556	631	N/A	555	706
305	HALLIDAY, EBBY	8.93	96,196	2011	22	8	821	626	633	736	900	N/A	577
167	KLEBERG*	12.09	58,444	1987	13	39	684	821	804	910	N/A	659	704
208	SEAGOVILLE ES	11.29	65,577	1988	24	40	744	620	599	677	N/A	N/A	684
244	SEAGOVILLE NORTH*	14.15	106,462	2012	16	10	817	792	788	887	N/A	941	1116
TBD	NEW ELEMENTARY	TBD	TBD	2027	TBD	0	750	TBD	TBD	750	750	N/A	TBD
69	SEAGOVILLE MS	49.58	138,318	1986	9	17	1418	1479	1308	1030	N/A	1122	1328
15	SEAGOVILLE HS	49.58	234,792	1980	9	28	1373	1636	1855	N/A	N/A	N/A	2021

*New elementary (PK-8) between Kleberg and Seagoville North to reduce enrollment and alleviate MS.

+Capacity will be adjusted with new additions at elementary schools.

^ Using the highest PASA projection, or current enrollment, whichever is higher minus the new school, and Halliday to 8th relief

Seagoville Area Growth: Central Elementary School

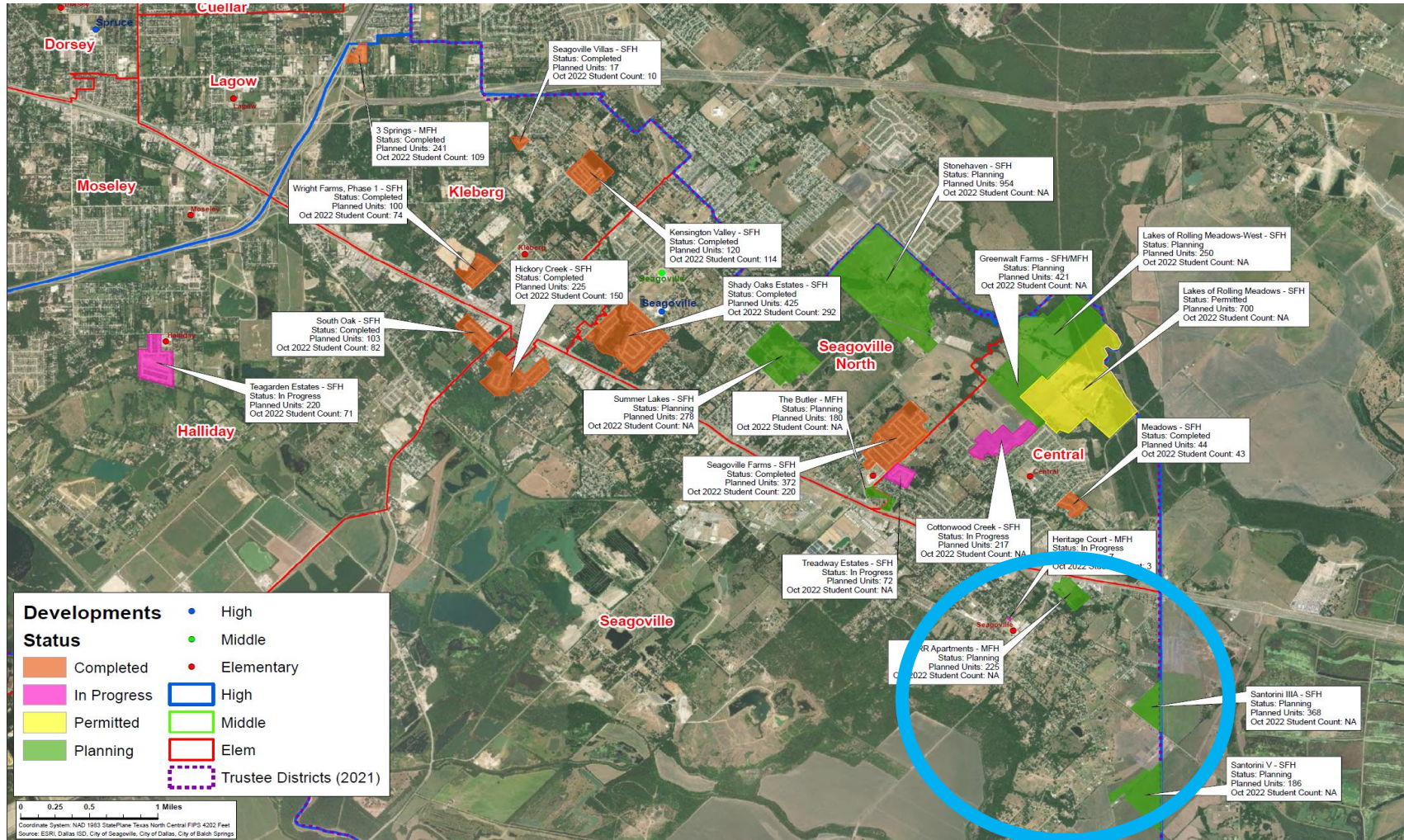


Central ES

- **Budget:** \$6,500,000
- **Enrollment:** 556
- **Capacity:** 633
- **Projected Capacity 10 years:** 706
- **Program Change:** 6th grade addition
- **6 Classroom Addition + Science Lab & Storm Shelter**
- **Opening: Spring 2027**



SEAGOVILLE AREA PROJECTED GROWTH: Seagoville ES



SEAGOVILLE AREA PROJECTED GROWTH: Seagoville ES

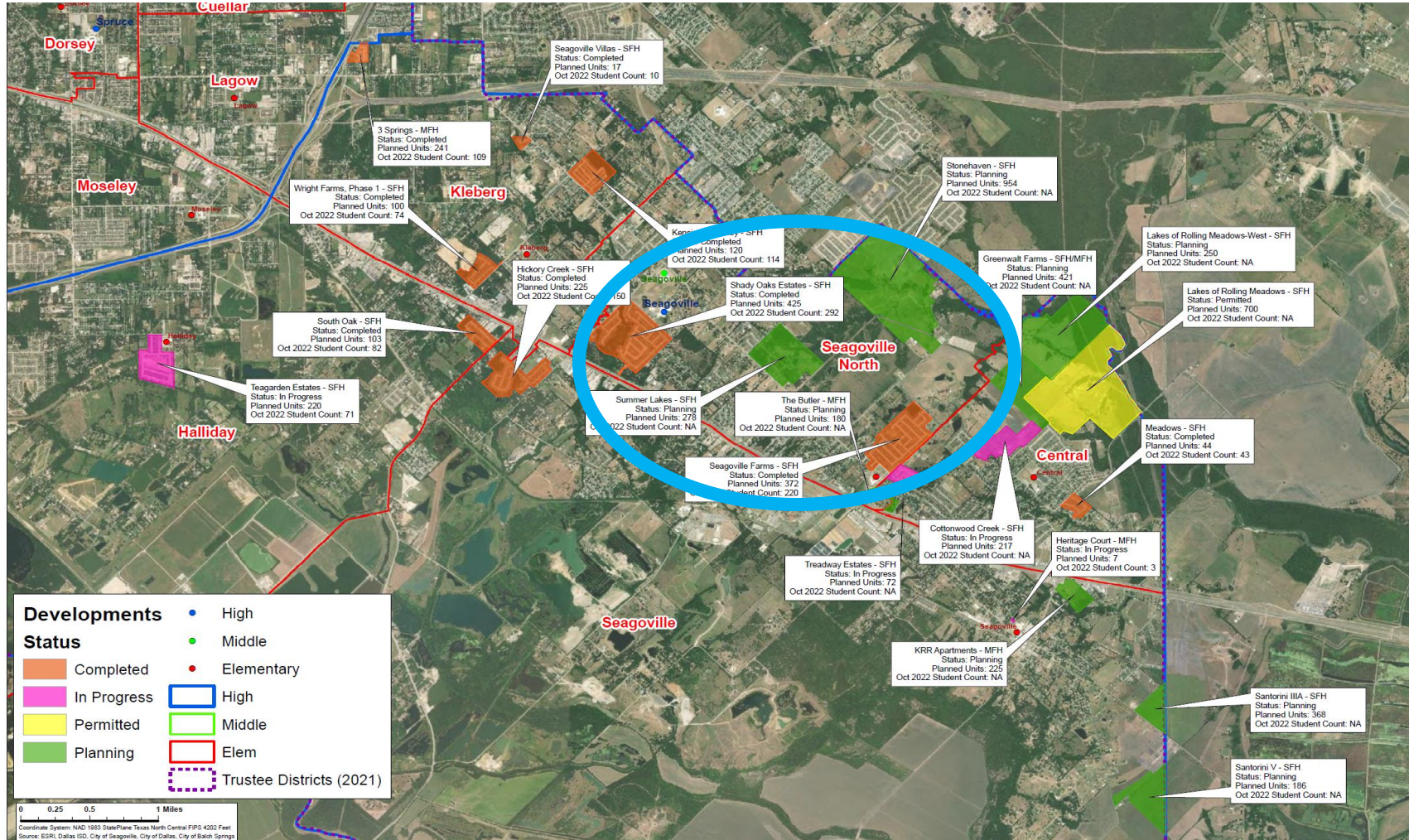


Seagoville ES

- Budget: \$4,000,000.00
- Enrollment: 599
- Capacity: 744
- Projected 10 year enrollment: 684
- Program Change: 6th grade addition
- Renovation to create Secure Vestibule, SPED, Art and Music Classrooms + Science Lab
- Opening: Fall 2026



SEAGOVILLE AREA PROJECTED GROWTH: Seagoville North ES



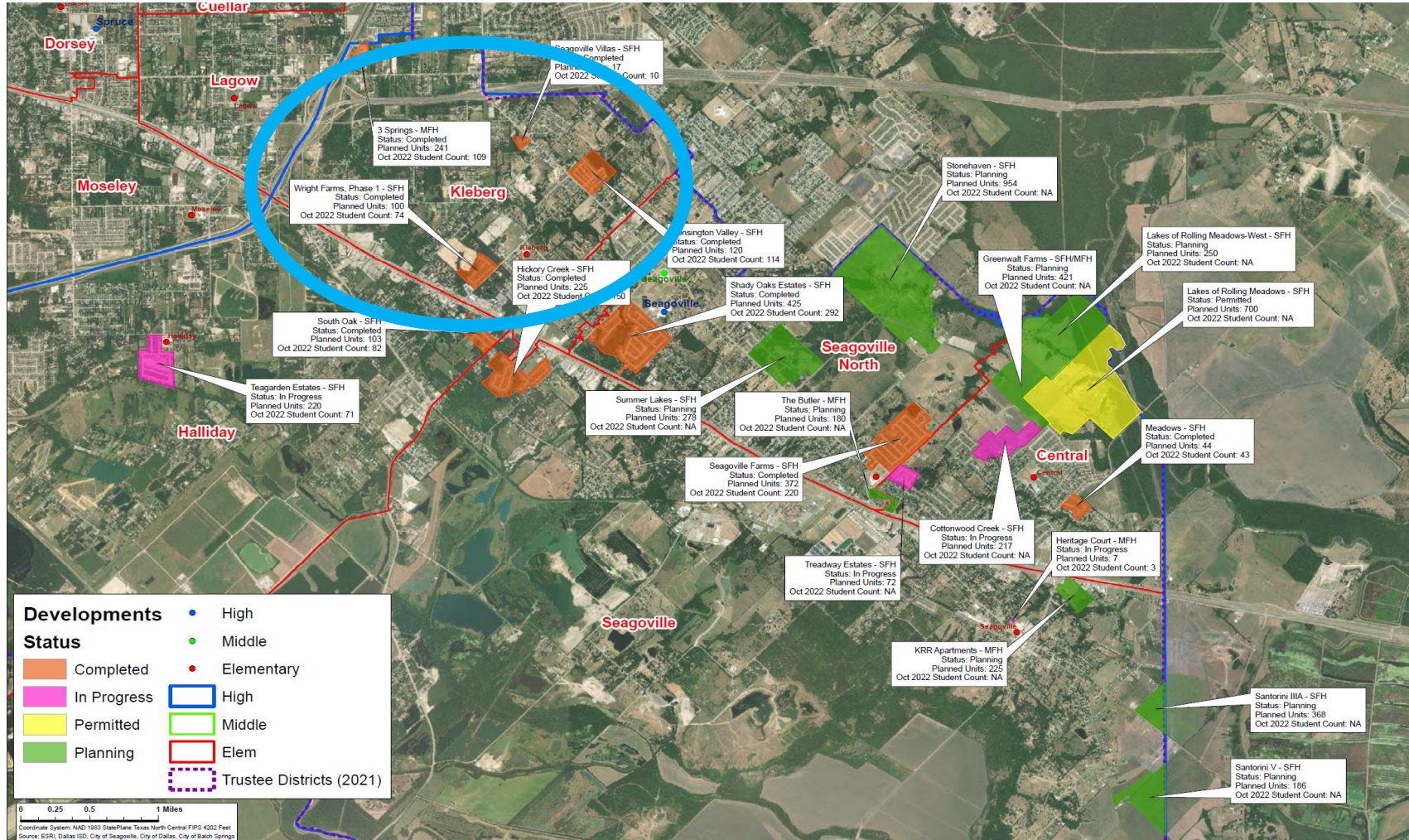
Seagoville Area Projected Growth: Seagoville North ES



- **Budget:** \$13,000,000
- **Enrollment:** 788
- **Capacity:** 817
- **Projected Enrollment** 1116
- **Program Change:** 6th grade addition
- **14 Classroom Addition + Storm Shelter**
- **Opening: Spring 2027**



SEAGOVILLE AREA PROJECTED GROWTH: Kleberg ES



Proposed Programmatic Changes: Kleberg ES

Kleberg ES

- Budget: \$4,000,000
- Enrollment: 804
- Capacity: 684
- Capacity in 10 Years: 704
- Program Change: 6th grade addition
- 4 Classroom Addition + Storm Shelter
- Opening: Spring 2026



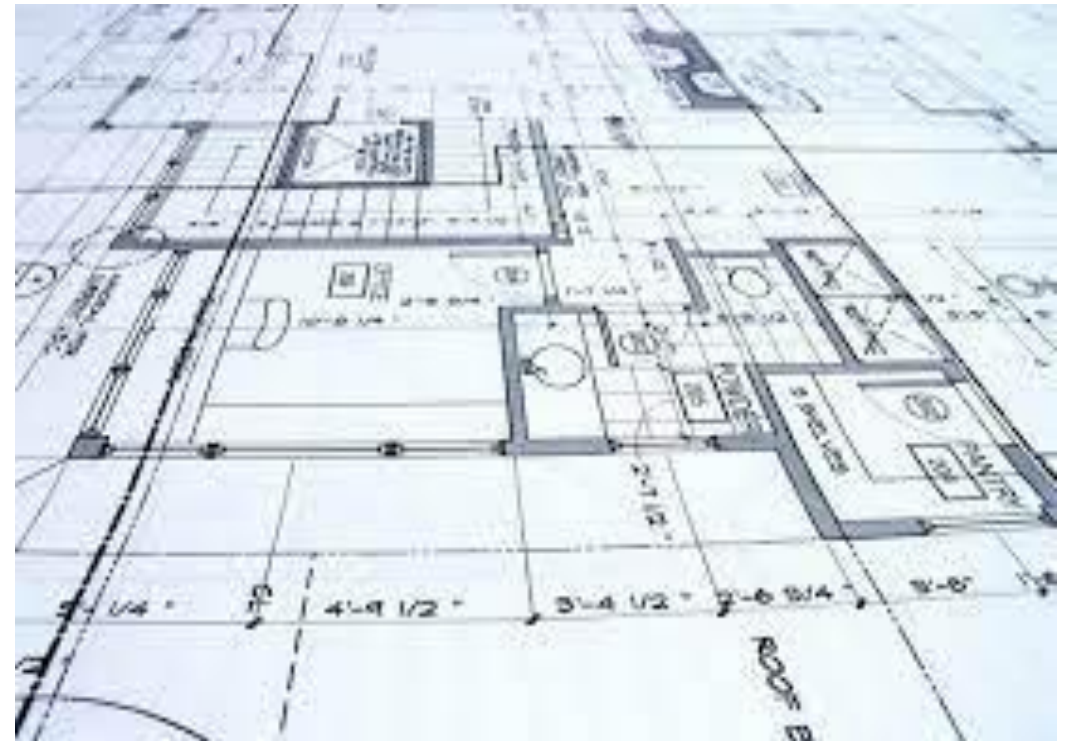
SEAGOVILLE AREA PROJECTED GROWTH: Ebby Halliday



- **Enrollment: 633**
- **Capacity: 900**
- **Capacity in 10 Years: 577**
- **Program: PK – 8 Addition**
- **Middle School Science Labs**
- **Middle School Theater Classroom or Dance Studio**
- **Middle School Band, Choir or Orchestra Room**
- **Middle School Art Classroom**
- **Elementary School Art Classroom**
- **Elementary School Music Classroom**
- **Stem/Computer Labs**
- **Competition Gym with Locker Rooms**
- **Opening: Fall 2027**

SEAGOVILLE AREA PROJECTED GROWTH: New School

- **Enrollment: TBD**
- **Capacity: 750**
- **Capacity in 10 Years: TBD**
- **Program: PK – 8 New**
- **Middle School Science Labs**
- **Middle School Theater Classroom or Dance Studio**
- **Middle School Band, Choir or Orchestra Room**
- **Middle School Art Classroom**
- **Elementary School Art Classroom**
- **Elementary School Music Classroom**
- **Stem/Computer Labs**
- **Competition Gym with Locker Rooms**
- **Opening: Fall 2027**



Current Bond Investment In District 4 Seagoville High School



Construction Services

- **Budget:** \$33, 395, 232.00
- **Enrollment:** 1,885
- **Current Capacity:** 1373
- **2026 Capacity** 1823 With Addition
- **10 Year Capacity** 2021
- **15 Classroom and 3 Science Labs Storm Shelter Addition**
- **Security Updates**
- **Site improvements**
- **Opening: Spring 2026**



DISD District 4 Seagoville Area Solution

\$64,000,000

ADDITIONAL MONEY PROPOSED FOR DISTRICT 4 PROJECTS

**MOVE 6TH GRADE TO ELEMENTARY SCHOOLS
KLEBERG
CENTRAL
SEAGOVILLE ELEMENTARY SCHOOL
SEAGOVILLE NORTH ELEMENTARY**

**PRE-K 8 MODEL :
EBBY HALLIDAY
NEW SEAGOVILLE SCHOOL**



THANK YOU

Questions?