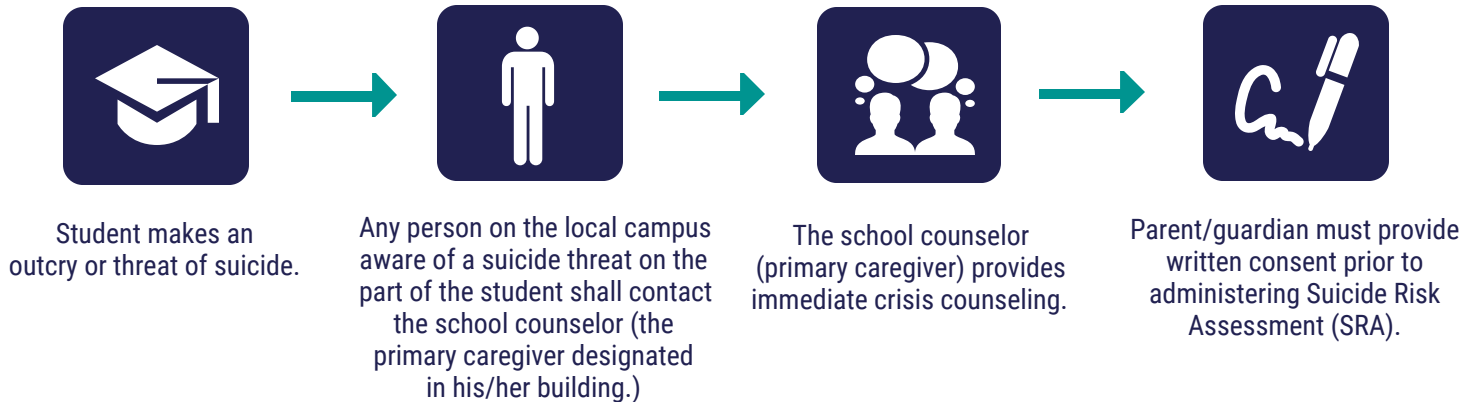


Suicide Threat of a Student

SUICIDE THREAT OF A STUDENT FFE (LOCAL)

A suicide threat is defined as any spoken, written, or behavioral indication of self-destructive tendencies with the intent of taking one's own life. School personnel shall take all threats seriously and shall implement the following procedures:



School counselor (primary caregiver) shall:

- Work with the campus Safety and Security Team to immediately remove all dangerous substances and/or implements from the student and the area.
- NOT leave the student alone or return to class unsupervised until an adult family member, preferably a guardian, has been notified and an intervention plan agreed upon.
- Inform the building administrator of the crisis situation.
- Report the threat of suicide to the Mental Health Services Department (School-Based Clinician).
- Request the services of specialized suicide and crisis personnel through the Mental Health Services Department. The School-Based MHS Clinician can assist.
- NOT release the student from school prior to notification and consent of any adult family member, preferably a guardian.
- NOT transport a suicidal student to a hospital or home but may accompany a parent who assumes responsibility for transportation.

Mental Health Services team member will:

- Assist in the development of a **Safety Plan** for the student.
- Secure consent from parent/guardian for counseling services by Mental Health Services.
- Assist the campus with case management of the suicide threat.
- Provide campus with crisis assistance as needed for other students/staff.
- Submit appropriate documentation in the Mental Health Services database.