

# Conrad Global H-TECH



Emmett J. Conrad Global H-TECH is tailor-made for students interested in science, technology, engineering and mathematics (STEM). What's more, the Conrad Global H-TECH has a focus on gaming – one of the most exciting fields in

technology today. As students collaborate, design, and create solutions, they will acquire the communication, teamwork and problem-solving skills so valued in the 21st century workplace.

Students can choose to follow one of the following technology pathways:

- Gaming
- Network Administration
- IT/Software Programming
- Associate of Science for Allied Health

## Enrollment Criteria

Conrad Global H-TECH is designed to serve incoming ninth-grade students who are:

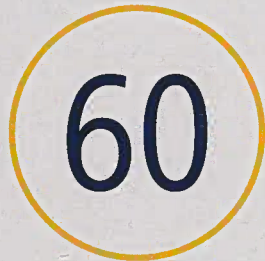
- Determined to attend college.
- First-generation college students.
- Historically underrepresented in higher education.

The academy will accept up to 125 ninth-grade students per year, and students will move together as a cohort as they progress through high school.

Students will attend ninth and tenth grade at Conrad High School in a dedicated wing of the building. For their junior and senior years, students will attend classes on the Richland College campus. Transportation will be provided at no charge.

**To apply, go to [dallasisd.org/yourchoices](http://dallasisd.org/yourchoices).**

## P-TECH Benefits



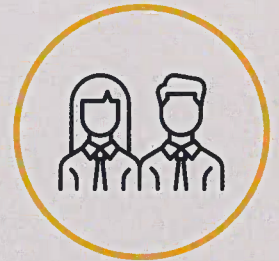
Number of potential college credits students can earn from Conrad Global H-TECH



Potential savings on two years of community college tuition and books



Instruction in a small, personalized learning environment



Opportunity to participate in a high-quality work experience via a professional internship