

RESTROOM EXPECTATIONS



VOICE LEVEL 1

KEEP RESTROOM CLEAN

REPORT MESSSES

REPORT INAPPROPRIATE BEHAVIOR

RETURN TO CLASS/LINE PROMPTLY

USE 2 PUMPS OF SOAP

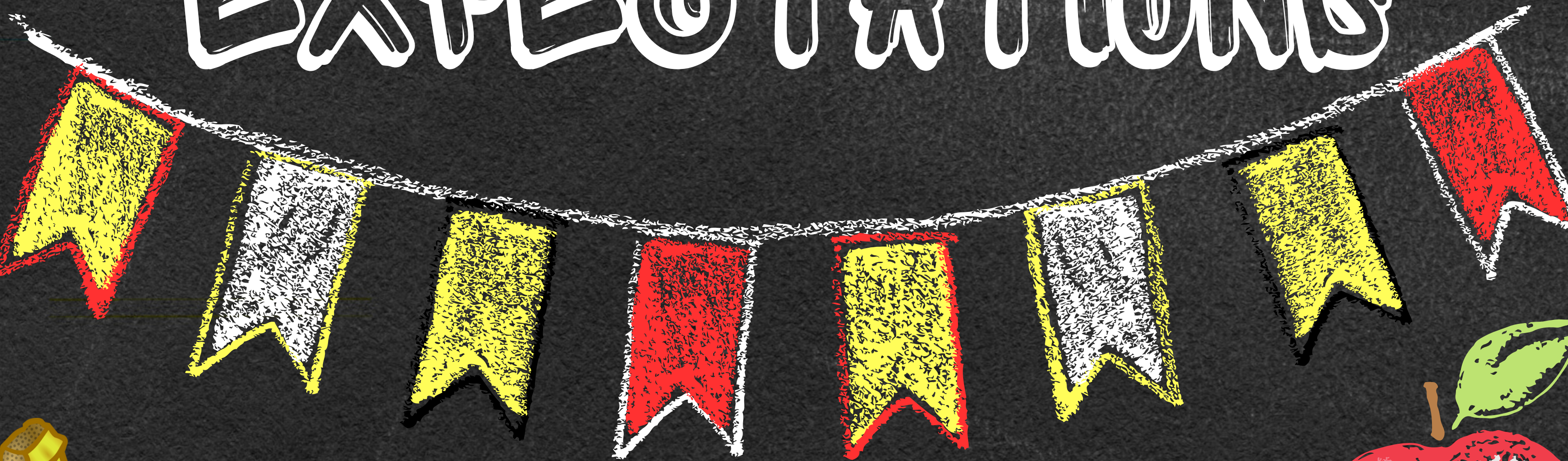
USE 2 PAPER TOWELS

NO HORSEPLAY





CAFETERIA EXPECTATIONS



VOICE LEVEL 2

K-3: VOICE LEVEL 0 LAST 10 MIN

4-5: VOICE LEVEL 0 LAST 5 MIN

TOUCH/EAT YOUR FOOD ONLY

STAY IN YOUR SEAT

RAISE HAND IF YOU NEED SOMETHING

FOLLOW SUPERVISOR DIRECTIONS

CLEAN UP AFTER YOURSELF

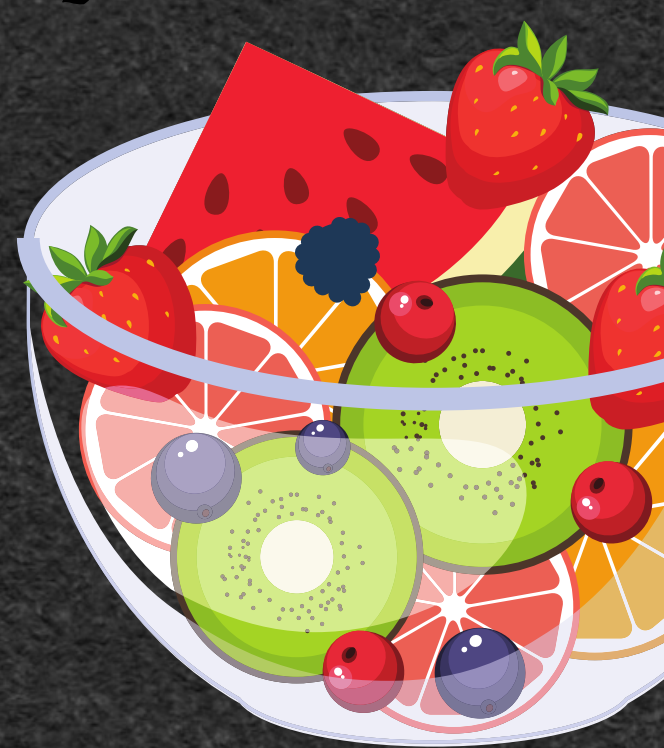


USE MANNERS

NO HORSEPLAY



BREAKFAST EXPECTATIONS



NO TOYS OR PHONES
CLEAN UP AFTER YOURSELF

PLACE YOUR BELONGINGS UNDER BENCH

WALK DIRECTLY TO GET YOUR FOOD

STAY IN YOUR SEAT—NO SWITCHING

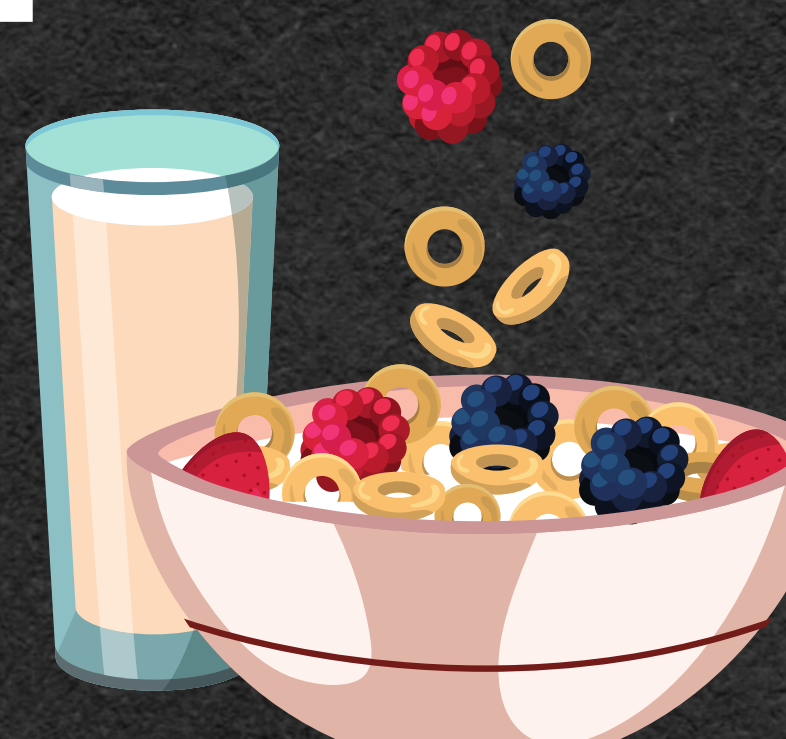
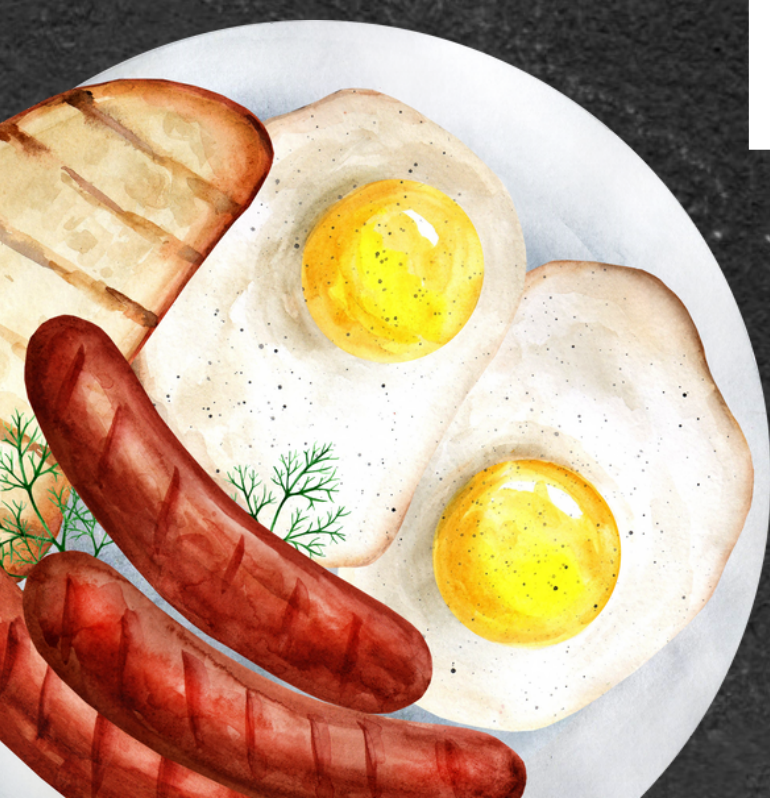
ASK FOR PERMISSION TO LEAVE CAFETERIA

SIT WITH LEGS UNDER YOUR TABLE

KEEP HANDS TO YOURSELF

NO TOYS OR PHONES

VOICE LEVEL 2





HALLWAY EXPECTATIONS



VOICE LEVEL 0



KEEP HANDS AND FEET TO YOURSELF

WALK ON THE RIGHT SIDE OF HALLWAY

KEEP YOUR HANDS AT YOUR SIDE

FACE FORWARD



STAY BEHIND YOUR CLASSMATE

LISTEN TO STAFF THE 1ST TIME




SET AN EXAMPLE

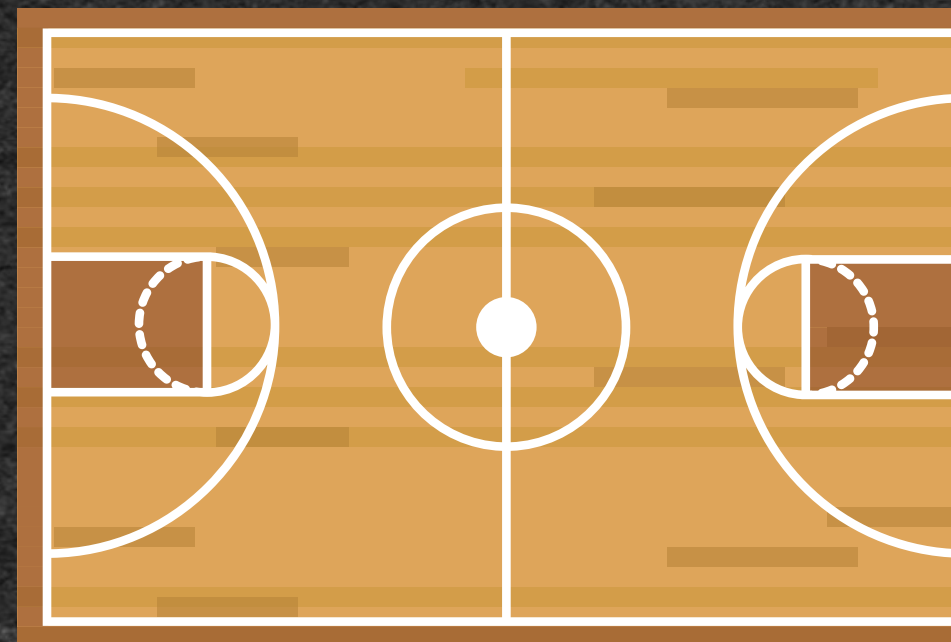




RECESS EXPECTATIONS



NO HORSEPLAY
BE KIND TO OTHERS



SHOW GOOD SPORTSMANSHIP
ONLY GO DOWN THE SLIDE—NOT UP
STAY ON YOUR GRADE LEVEL'S SIDE OF GYM
FOLLOW SUPERVISOR DIRECTIONS
SHARE THE RECESS BALLS AND EQUIPMENT
LINE UP WHEN RECESS IS OVER
WALK TO LUNCH AT VOICE LEVEL 0
TELL ADULT IF YOU HAVE A PROBLEM THAT CAN'T BE
RESOLVED WITH PEERS



CLASSROOM EXPECTATIONS



BE ON TIME TO CLASS AND READY TO LEARN

LISTEN AND PARTICIPATE IN THE LESSON

TAKE CARE OF CLASSROOM MATERIALS

FOLLOW DIRECTIONS FROM ADULTS

USE KIND WORDS AND ACTIONS

ALWAYS DO YOUR BEST



COMPLETE WORK ON TIME



ASK FOR HELP WHEN NEEDED

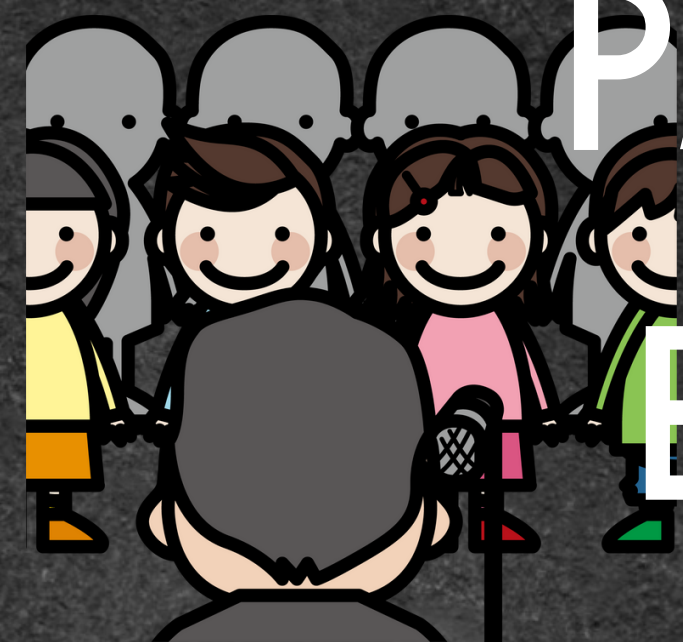
HAVE A POSITIVE ATTITUDE



ASSEMBLY EXPECTATIONS



LISTEN TO AND FACE THE SPEAKER
BE KIND TO OTHERS AND THE SPEAKER
KEEP HANDS AND FEET TO YOURSELF
STAY WITH YOUR TEACHER/CLASS
QUIET FEET ON THE BLEACHERS
FOLLOW TEACHER DIRECTIONS
PARTICIPATE WHEN ASKED
ENTER AND EXIT SILENTLY





OFFICE EXPECTATIONS



ENTER QUIETLY

WAIT YOUR TURN

STAY IN FRONT OF THE DESK

USE KIND WORDS AND GOOD MANNERS

HAVE A PURPOSE

RETURN TO CLASS PROMPTLY



TECHNOLOGY EXPECTATIONS

BRING DEVICE CHARGED TO SCHOOL

AT SCHOOL:

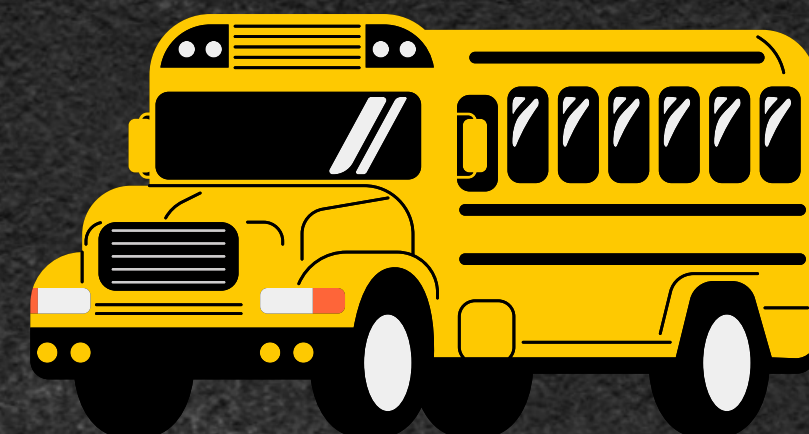
ONLY GO TO SITES YOUR TEACHER DIRECTS YOU TO

AT HOME:

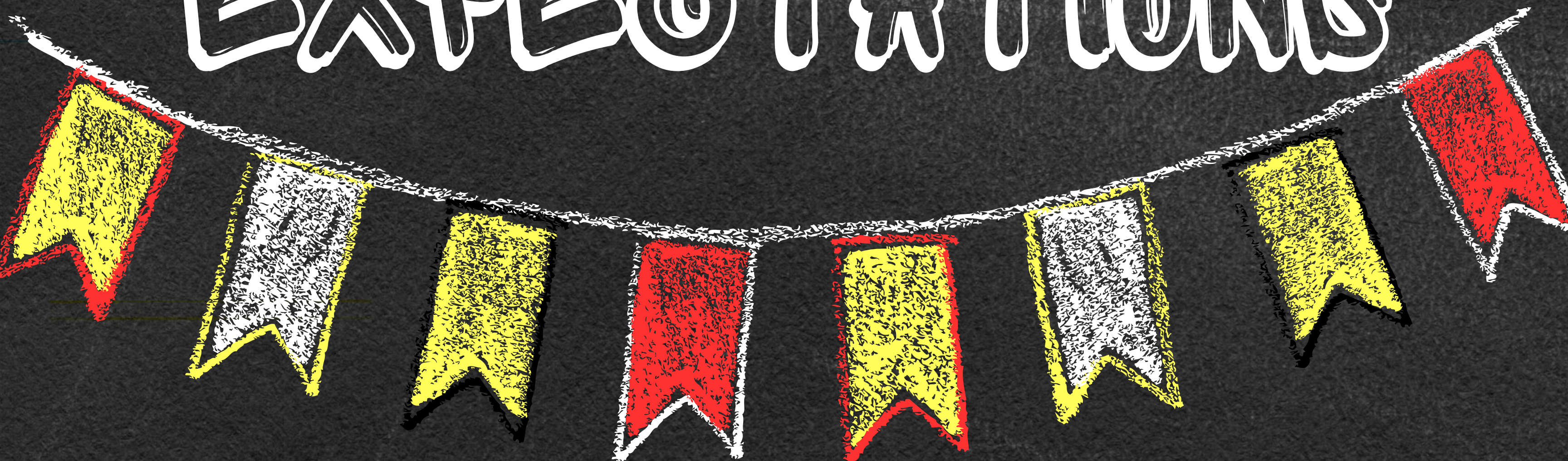
ONLY SEARCH AND VISIT SCHOOL-APPROPRIATE SITES

TAKE CARE OF YOUR DEVICE AND REPORT ANY DAMAGE
IMMEDIATELY





BUS EXPECTATIONS



BE KIND TO STUDENTS AND DRIVER

SPEAK QUIETLY TO SEAT PARTNER

VOICE LEVEL 0 AT RAILROAD CROSSING

SIT BACK TO BACK/BOTTOM TO BOTTOM

RESPECT AND LISTEN TO THE BUS DRIVER

KEEP HANDS AND FEET TO YOURSELF

WALK TO AND FROM THE BUS

KEEP THE AISLE CLEAR



SCHOOL ZONE



MORNING ROUTINE EXPECTATIONS

IF YOU ARE EATING BREAKFAST:

- BREAKFAST IS SERVED 7:30–7:50AM
- BUS RIDERS/WALKERS/CAR RIDERS:
 - REPORT DIRECTLY TO CAFETERIA WHEN YOU ARRIVE AFTER 7:30AM



IF YOU ARE NOT EATING BREAKFAST:

- ONLY ENTER BUILDING AFTER 7:50 BELL RINGS

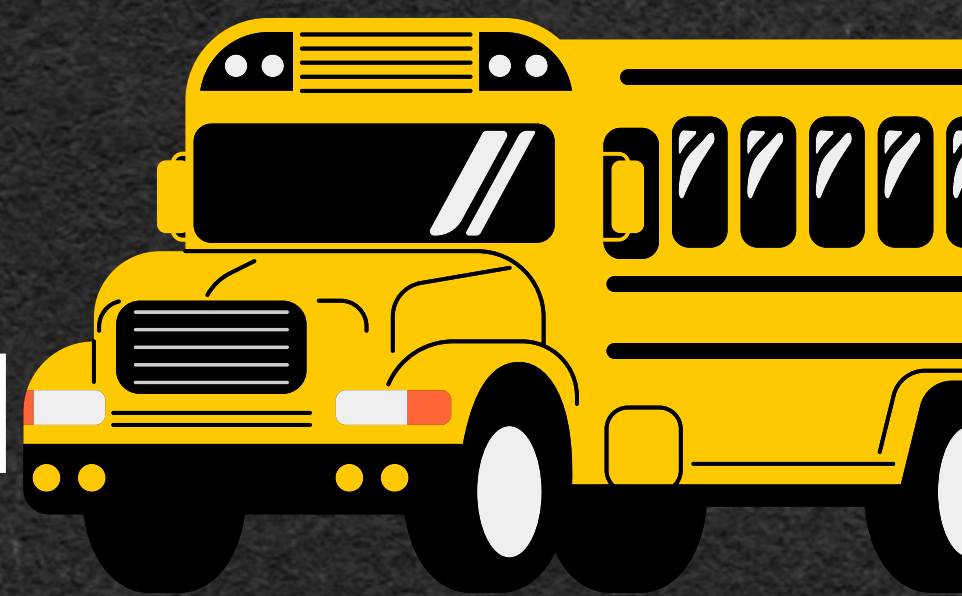
PARENTS: WE DO NOT SUPERVISE STUDENTS UNTIL 7:50AM UNLESS THEY ARE AT BREAKFAST

WHEN 7:50AM BELL RINGS:

- REPORT DIRECTLY TO YOUR CLASSROOM
- DO NOT GO VISIT OTHER TEACHERS/CLASSROOMS

BE ON TIME!

LEARNING BEGINS AT 8AM





CAR RIDER POLICY



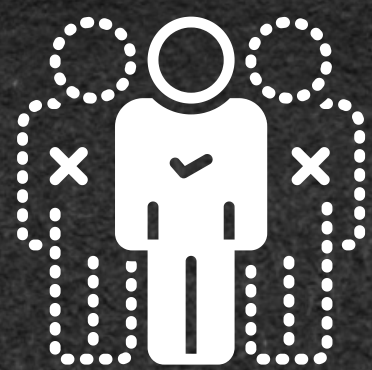
**CAR RIDERS WILL BE PICKED UP/DROPPED OFF
IN THE BACK OF THE SCHOOL.**

**PARENTS MAY PARK IN A PARKING SPOT IN THE
BACK PARKING LOT AND WALK THEIR CHILD
TO/FROM THE SCHOOL.**

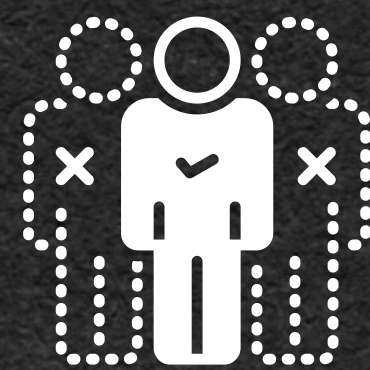
OR

**PARENTS MAY WAIT IN THE DESIGNATED
PICKUP/DROP OFF LINE FOR THEIR CHILD TO GET
INTO/OUT OF THEIR CAR.**

**PARENTS MAY NO LONGER PARK ALONG SIDE THE
PARKING LOT BY THE GARBAGE BINS TO
PICKUP/DROP OFF THEIR CHILD
DUE TO SAFETY CONCERNS.**



ATTENDANCE POLICY



**STUDENTS THAT MISS MORE THAN
5 DAYS OF SCHOOL DURING EACH
SEMESTER WILL BE COUNTED AS
UNEXCUSED UNLESS THEY HAVE A
DOCTOR'S NOTE.**

**IF YOU CHILD WILL BE ABSENT—
CONTACT THE SCHOOL BY 9AM:
217-672-3612.**

**IF YOU LEAVE A MESSAGE—PLEASE
STATE THE REASON FOR YOUR
CHILD'S ABSENCE.**



TARDY POLICY



**STUDENTS WILL BE IN THEIR
CLASSROOM BY 8AM OR THEY WILL
BE MARKED TARDY.**

**AFTER 5 TARDIES TO SCHOOL, THE
STUDENT WILL SERVE A LUNCH
DETENTION FOR EACH ADDITIONAL
TARDY.**

**EACH SEMESTER THE TARDY COUNT
WILL START OVER**



VISITOR POLICY



**ALL VISITORS MUST BRING A VALID ID AND
CHECK IN THE OFFICE TO RECEIVE A BADGE.**

**TEACHERS MUST PRE-APPROVE ALL VISITORS TO
THE CLASSROOM.**

**PARENTS MAY NOT COME AND EAT LUNCH WITH
THEIR CHILD DUE TO INCREASED SAFETY
MEASURES.**

**PARENTS/VISITORS ARE STILL ABLE TO COME TO
CLASSROOM PARTIES DUE TO INCREASED
AWARENESS AND SECURITY ON THESE
PARTICULAR DATES.**

WLED

CARDINAL

PLEDGE



I WILL BE
RESPECTFUL, RESPONSIBLE, AND READY
FOR MY OWN
ACTIONS, WORDS, AND LEARNING.
THE CHOICE IS MINE.
THIS IS THE CARDINAL PLEDGE.
ONE COMMUNITY
ONE DISTRICT
ONE FAMILY

