

# Pease Communications & Technology Academy Newsletter



Excellence, Passion, Pro-Active, Accountability Focused, Collaborative  
Citizenship, Compassion, Diligence, Fairness, Honesty, Integrity, Respect, Responsibility, Safety



**Mission:** We inspire and nurture our children through a balanced instructional program to create the future leaders of the world.

**Vision:** Our vision is to transform our educational beliefs by creating inclusive learning opportunities where students are actively engaged in a self-regulated and safe environment.



Excellence, Passion, Pro-Active, Accountability Focused, Collaborative  
Citizenship, Compassion, Diligence, Fairness, Honesty, Integrity, Respect, Responsibility, Safety





# Important Links

## PEASE COMMUNICATIONS & TECHNOLOGY ACADEMY



At Pease Communications & Technology Academy, academic and emotional growth are tied in with engagement and ownership by students, parents, community members, faculty, and staff as they feel valued and empowered at school. Our responsibility is to ensure that each student receives a top quality education tailored to their specific needs and based on essential standards while integrating specialized communications and technology skills. We will hold ourselves and our students accountable for their progress and learning. Along with teaching inquiry, empathy, and reflection, we will nurture the development of values such as respect, responsibility, diligence, integrity, kindness, and persistence. Pease Communications & Technology Academy Tigers will feel safe, confident, and excited about their learning because they will know that every adult on our staff cares about them and is passionate about their education and growth.

[Skyward Family Access](#)

[SchoolCafe](#)

[Pease PTA Facebook](#)

[Pease Parent Handbook](#)

[Pease Academy Website](#)

[Midland ISD Parent Info.](#)

[Google Classroom](#)

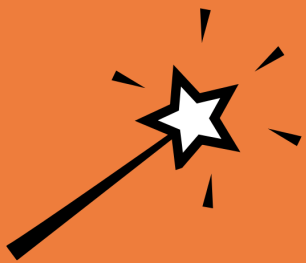


Excellence, Passion, Pro-Active, Accountability Focused, Collaborative  
Citizenship, Compassion, Diligence, Fairness, Honesty, Integrity, Respect, Responsibility, Safety



# Red Ribbon Spirit Week Dress

**Monday**  
**10/24**  
Magical Shirt  
& Jeans



**Tuesday**  
**10/25**  
Pajamas



**Wednesday**  
**10/26**  
Red Shirt  
& Jeans



**Thursday**  
**10/27**  
Superhero Shirt  
& Jeans



**Friday**  
**10/28**  
Sports Shirt  
& Jeans



# Bookish Pumpkin Contest

Decorate a pumpkin as your favorite book or book character

## Entry Rules

- No real pumpkins please! They will go bad and get smelly
- Must be student made: Students can have parent/guardian help, but we're looking for student work
- One pumpkin per student
- Last day to enter a pumpkin will be Monday Oct. 24, 2022
- Contest winners will be announced Thursday Oct. 27, 2022
- All pumpkins will be sent home Friday Oct. 28, 2022



SIGN YOUR CHILD UP FOR THE  
AWARD-WINNING  
basin PBS  
INTERSESSION CAMP

In partnership with  
**Casa de Amigos**  
Helping People Help Themselves



## Fall Theme "Changing Seasons"

Need a smart idea for childcare during intersession?  
Sign your student up for the  
AWARD-WINNING BASIN PBS INTERSESSION CAMP!  
Limited spots available.  
Must pre-register - NO day of registration

**MONDAY, OCTOBER 31 - THURSDAY, NOVEMBER 3**  
**7:30AM - 3:00PM**

**De Zavala Elementary School**  
705 N. Lee Street, Midland

Breakfast & lunch provided  
Curriculum provided by Basin PBS

Scan the QR code with  
your phones camera to  
register your child for  
INTERSESSION CAMP!  
Or sign up by going to:  
BasinPBS.org



Sponsored by  
**DIAMONDBACK**  
Energy

CORE VALUES

Excellence, Passion, Pro-Active, Accountability Focused, Collaborative  
Citizenship, Compassion, Diligence, Fairness, Honesty, Integrity, Respect, Responsibility, Safety



SLIDESMANIA.COM

# Fine Arts Program

"Spooky Science"  
Grades 5-6

October 27<sup>th</sup> 5:30 - 6:15 pm



Excellence, Passion, Pro-Active, Accountability Focused, Collaborative  
Citizenship, Compassion, Diligence, Fairness, Honesty, Integrity, Respect, Responsibility, Safety



# Upcoming Events

**10/1 to  
10/31**  
Kinder GT  
Nominations

GT Nomination window for Kindergarten student is open.

**Friday  
10/28**  
Report  
Cards

Cycle 2 grading closes on Friday 10/28. Login to Skyward to view grades.

**Monday  
10/24**  
Decorate a  
Pumpkin  
Contest

Last day to enter your pumpkin for the decoration contest is Monday 10/24. Winners will be announced on 10/27. All pumpkins will be sent home on Friday 10/28.

**Week of  
10/31**  
Fall  
Intersession

Invited students will participate in enrichment and intervention instructional activities October 31<sup>st</sup> to November 4<sup>th</sup>.

**Wed-Fri  
11/23**  
Thanksgiving  
Break

Schools are closed in observance of Thanksgiving Holiday November 23-25. Students and teachers return to school on 11/28.



Excellence, Passion, Pro-Active, Accountability Focused, Collaborative  
Citizenship, Compassion, Diligence, Fairness, Honesty, Integrity, Respect, Responsibility, Safety



# Attendance Reminders

- Classes begin at 7:45 am. Any student arriving after 7:45 am will be sent to the front office for a tardy slip even if arriving at the Magnolia or Scharbauer doors.
- If your child is absent, then you have three days to send in a doctor or dentist note to excuse the absence.
- If you have questions about transportation, then call the office for help with the bus schedule options.
- Our computer system automatically generates attendance letters to send home based on Texas attendance laws and MISD policies. If generated, you will receive an email and a paper copy will be sent home.
- At the second and third letter, we will call you for a phone conference.







## Benton St. Pedestrian Bridge Construction

New bridge to be placed across the draw on the opposite side (east) of the old Benton St. bridge. Old bridge will stay in service till after the new one has been built and opened. New bridge to be set (tentatively) on November 20th. New bridge to be opened (tentatively) on January 11, 2023. Old bridge to be demolished on January 12, 2023.



Excellence, Passion, Pro-Active, Accountability Focused, Collaborative  
Citizenship, Compassion, Diligence, Fairness, Honesty, Integrity, Respect, Responsibility, Safety



# Kids Heart Challenge

Our school has officially started Kids Heart Challenge with the American Heart Association and we need your help! Over the next few weeks students will be learning about their heart and raising awareness and funds for the American Heart Association. Our school's goal is to raise \$11000 in donations and for every student to complete Finn's Mission.

## HERE'S HOW TO GET STARTED

Step 1. Download the APP- KIDS HEART CHALLENGE or visit

<http://www.heart.org/KidsHeartChallenge> to sign up!

Step 2. Complete FINN'S MISSION – this will be your map!

# Dismissal Reminders

- Only use the crosswalk to cross the road and DO NOT unload students if not parked next to the sidewalk.
- Pull all the way up to the furthest staff member.
- It is against the law to be on your phone in an active school zone.



Excellence, Passion, Pro-Active, Accountability Focused, Collaborative  
Citizenship, Compassion, Diligence, Fairness, Honesty, Integrity, Respect, Responsibility, Safety



# Reminders & Updates

- Breakfast is served during arrival from 7:30-7:45 am in the classrooms. The tardy bell rings at 7:45 am and class begins.
- Dismissal is at 3:00 pm. Students picked up before 3 pm will be marked as a leave early on attendance.
- Breakfast is free for all students, lunch is not. To sign up for free or reduced lunch, [use this link](#).
- We are a uniform campus. All "free dress" and spirit days will follow MISD dress code guidelines.
- Students have PE and/or recess every day. Please make sure your students wear running and climbing appropriate shoes every day.
- Our teachers and students use Google Classroom as part of our instructional program and as a communication tool. Please have your student login and show you the tools.
- Please [use this link](#) for more information on helpful things to look for in Skyward.



## Overall Rating



85 out of 100

This measures how much students are learning in each grade and whether or not they are ready for the next grade. It also shows how well a school or district prepares their students for success after high school in college, the workforce, or the military.

[Tell Me More](#)

[ADDITIONAL DETAILS](#)

# School Rating

Amazing Pease Parents,

I am extremely happy to announce Pease's accountability score from TEA for the 21-22 school year. Pease went from being an F campus to be a B Campus! This is the result of your children's hard work, the tremendous dedication of our teachers and staff and your support at home.

This year, our goal is to become an A campus and we know that it is possible. However, this is not an easy task and we will need all of your support to make this happen. Please remember to ask your children to ready every day at home, do their homework and always do their best in school.



# Dress Code & Uniform

## Tops



Polo tops and dresses in solid colors of black, gray, white, or orange may be worn with or without turtlenecks or long sleeves under them in the same color options.

## Bottoms



Pants, shorts, skirts, skorts, dresses, and jumpers must be no shorter than 3 inches above the knee in the colors of black or khaki. Cargo style bottoms are not allowed.

## Other



Logos on tops must be 2" x 2" in size or smaller. Leggings and socks solid colors are black, grey, white, or orange. Belts are optional, colors may be black or brown. Bandanas and head scarves may not be worn in the building.

## Outerwear



Coats and hats may be worn to school as needed to address cold weather, and then put away once inside the building. Inside sweaters and warm tops may be worn if they follow the color and logo guidelines of tops.



Excellence, Passion, Pro-Active, Accountability Focused, Collaborative  
Citizenship, Compassion, Diligence, Fairness, Honesty, Integrity, Respect, Responsibility, Safety



# Arrival and Dismissal

Magnolia Ave.

Grades K-1: The car line begins on Magnolia Ave. and wraps around Benton St. to the north. Students will use the double glass doors at the middle of the building on Magnolia Ave.

FRONT

All students will go to the youngest sibling's dismissal.

Grades 2-6: The car line begins in the drive through on Scharbauer Dr. and wraps around Peterson St. to the north. Students will use the doors by the end of the drive through lane. Students must load/unload from the lane closest to the sidewalk.

Peterson St.

Right at School meets in the Research Area and dismisses from the playground door on Magnolia Ave.



Bus riders will wait in the cafeteria. Walkers enter through their side of the school and dismiss from their home's side of the cafeteria.

GYM

Scharbauer Dr.

Students arriving after 7:45 will sign-in tardy at the office. Students will relocate to the office after 3:15 if no more cars are in the dismissal pickup line.

CORE VALUES

Excellence, Passion, Pro-Active, Accountability Focused, Collaborative

Citizenship, Compassion, Diligence, Fairness, Honesty, Integrity, Respect, Responsibility, Safety



Pease Bus Schedule 2022-2023			
Route #	Bus #	AM Drop-Off	PM Pick-Up
4	684	7:24 AM	3:36 PM
8	688	7:08 AM	3:32 PM
12	692	7:43 AM	3:44 PM
14	694	7:27 AM	3:26 PM
15	695	7:21 AM	3:10 PM
16	696	7:20 AM	3:06 PM
20	1000	7:20 AM	3:39 PM
25	1005	7:25 AM	3:41 PM
26	1006	7:26 AM	3:38 PM
27	1007	7:27 AM	3:18 PM
28	1008	7:26 AM	3:36 PM
31	1011	7:19 AM	3:06 PM
32	1012	7:12 AM	2:53 PM
36	1016	7:16 AM	2:56 PM
38	1018	7:31 AM	3:08 PM
39	1019	7:22 AM	2:53 PM
40	1020	7:30 AM	3:37 PM
41	1021	7:28 AM	3:28 PM
42	1022	7:13 AM	3:28 PM
45	1025	7:17 AM	3:07 PM

# Bus Schedule

If you need help finding school bus for your child, then please call the office so that we can assist you with current bus route information.



Excellence, Passion, Pro-Active, Accountability Focused, Collaborative  
 Citizenship, Compassion, Diligence, Fairness, Honesty, Integrity, Respect, Responsibility, Safety





## MISD Student Meal Application Step by Step Guide

1. Login and/or create a SchoolCafe account  
([schoolcafe.com/MIDLANDISD](http://schoolcafe.com/MIDLANDISD))  
SchoolCafe app also available through Apple or Google
2. Once in SchoolCafe, select Apply for Benefits
3. Follow application steps.
4. **Submit application**



## Free & Reduced Lunch

Free and Reduced Price Meals are available to families. We encourage anyone interested in meals benefits to apply. A number of parents may think they don't qualify when they actually do. Because of this, we welcome all applications. To apply, please complete a "Free and Reduced Meal Price Application Form." We encourage applications to be completed online by creating a SchoolCafe account.

Once the applications have been processed, you will be notified by mail of your child's status. Until notification you must provide your child with a lunch or lunch money.

Only complete one application per family.

