

BRIDGES

CONNECTING OUR CITY OF SOUTH MILWAUKEE COMMUNITY



- ▶ Bridges Magazine Wins Award
- ▶ Bucyrus Commons Opens
- ▶ New Superintendent of Schools





TABLE OF CONTENTS

South Milwaukee School District News

- 5 Message from the New School Superintendent
- 6 South Milwaukee's Youngest Pioneers
- 8 Student Graduates Early and Gets To Work
- 10 Modern Career Education
- 11 The Future Is Electric for Youth Apprentice
- 12 Pride in Our Community, One Race at a Time
- 14 Reflections from Art Honor Students
- 16 Graduation Marks the End of an Era for Family Intertwined in Theatre Program
- 18 School District Highlights

Milwaukee Area Technical College News

- 20 Rolling Out the Royal Blue Carpet:
New Turf Field at MATC Oak Creek Campus

City of South Milwaukee News

- 22 Bucyrus Commons Grand Opening May 21
- 23 Get Ready for Crusherfest June 3-4
- 23 Taking Care of Your Trees from WE Energies
- 24 Police Department Fundraises To Establish K9 Unit
- 25 Mural Project Adds Excitement to Downtown
- 25 Welcome New South Milwaukee Businesses
- 26 City Staff Spotlight
- 27 A Salute to the South Milwaukee Municipal Band
- 28 South Milwaukee Public Library Programming
- 29 Adopt Your Drain Program
- 30 Business Spotlight: Immortal Toys and Collectables
- 32 Out and About in South Milwaukee
- 34 South Milwaukee Quality of Water Report
- 39 Community Calendar

BRIDGES MAGAZINE WINS AWARD



We are thrilled to announce that the Wisconsin School Public Relations Association (WSPRA) acknowledged **Bridges Magazine** with a 2022 Award of Merit for its May 2022 issue. **Bridges** is a joint effort between the South Milwaukee School District, the City of South Milwaukee and MATC. These awards are given in recognition of excellence in a variety of categories, and our entry was submitted by the SM School District. The award was presented at the WSPRA annual meeting on Nov. 12, 2022.

“Our goal with **Bridges** is to share the work and stories of our students with the community of South Milwaukee,” District Communication Coordinator Daniel Bader says. “We strive to share accurate, honest, timely news with our residents. We appreciate the recognition from a group like WSPRA.”

Bridges is also most appreciative of the support it receives from its main stakeholders as well as its advertisers. We look forward to publishing many more issues of this valuable and informative magazine.

EVERYBODY KNOWS MATC, BUT DO YOU REALLY KNOW MATC?

ASSOCIATE DEGREE

92% of MATC's 2020-21 graduates are employed within six months earning an average of **\$52,714**



Oak Creek Campus

6665 South Howell Avenue
414-297-MATC (6282) | Wisconsin Relay System 711

MATC is an Affirmative Action/Equal Opportunity Institution and complies with all requirements of the Americans With Disabilities Act. MATC is accredited by the Higher Learning Commission, Commission on Institutions of Higher Education, the national standard in accrediting colleges and schools for distinction in academics and student services.

SPRING/SUMMER 2023

BRIDGES

CONNECTING OUR CITY OF SOUTH MILWAUKEE COMMUNITY

Bridges is the official magazine of the City of South Milwaukee and the School District of South Milwaukee. *Bridges* provides news and feature stories about the people, businesses, places and events that make our community a very special place to live, work, visit and invest in.

Funded by the City and School District, the magazine receives additional financial support from MATC and local advertisers.

We welcome story ideas, content suggestions and advertising inquiries, but reserve the right to reject or edit content to assure compatibility with our editorial mission, advertisement criteria and other publication standards. Please email all inquiries and suggestions to info@smbridgesmagazine.com.

This publication is guided by a professional advisory committee comprised of representatives from the City of South Milwaukee and the School District of South Milwaukee.

CONTRIBUTING WRITERS: Patrick Brever and Katie Crosby (City of South Milwaukee), Dan Bader (South Milwaukee School District), Mark Feldmann (MATC) and Barb Caprile (Caprile Marketing/Design).

CITY OF SOUTH MILWAUKEE

Jim Shelenske, Mayor

Tamara Mayzik, City Administrator

Patrick Brever, Assistant City Administrator

2424 15th Avenue • South Milwaukee, WI 53172

414.762.2222 • smwi.org

SOUTH MILWAUKEE SCHOOL DISTRICT

901 15th Avenue • South Milwaukee, WI 53172

414.766.5000 • sds.milwaukee.k12.wi.us

Bridges magazine design/production: Caprile Marketing/Design



ON THE COVER

Alejandra Blemontes graduated early from South Milwaukee High School and began work as a pharmacy technician to gain valuable work skills before attending college. Read more on page 8 about this talented young woman who plans to become a nurse.

C3 Designs
 (414) 764-3892
 www.c3-designs.com

Brighten up your day by visiting
 Mari's Flowers, Wine & Gifts today!



Mari's
 A passion for flowers

Open Mon
 9am-2pm
 Tue, Thu & Fri
 8:30am-4:30pm
 Weds & Sat
 8:30am-12:30pm

mari@marisonbrady.com
 414-431-2030 • 905 Milwaukee Ave.

Your local corner bar with great drinks,
 delicious food and amazing people ...
WE CAN'T WAIT TO MEET YOU!

**OPEN FOR DINE IN
 AND CARRY OUT**

Enjoy our famous Fry Bread
 Tacos, tasty fish fry and more!
 Please see our full menu and
 hours (subject to change)
 on Facebook
facebook.com/trackerspub/

From our family to yours,
 thanks for your support!
 Anthony and Jen

TRACKER'S PUB & GRUB
 A Veteran-Owned
 and -Operated Business

Check out our amazing military decor,
 paying tribute to our Veterans!

1401 Rawson • 414-301-9058

**VODNIK
 HANDYMAN
 SERVICES LLC**

Serving South Milwaukee
 and surrounding communities

Fully insured – no job is too small!
 Ready to tackle your next
 handyman project!

- Plumbing & electrical jobs • Drywall
- Carpentry • Bathroom remodels
- General maintenance

**CALL TODAY FOR
 A FREE ESTIMATE!**
414-759-2331
vodnikhandyman@gmail.com

Like me on Facebook@
 Vodnik Handyman Services LLC

BBB Rating: A-
 As of 2/27/2021
 Click for Profile

Accepts credit cards

Homestead
 REALTY, Inc.

**THINKING OF BUYING
 OR SELLING A HOME?**
 It's where you live!
 I'm your neighborhood Realtor.
 Proudly serving our South
 Shore communities.

**TAKING ACTION...
 DELIVERING RESULTS!**
LET'S TALK – CALL TODAY!

Andrea Hueppe
HOMESTEAD REALTY, INC.
 414-405-8695
ahueppe@homesteadrealtyinc.com
 Lic. #81370-94



ONE LINE
\$29⁹⁹ /MO.
UNLIMITED DATA

EVEN WITH JUST ONE LINE

Visit our store to learn about all our current promotions!

Connect Cell, UScellular® Authorized Agent
 7836 S. Howell Ave, Oak Creek, 414-856-9200

Pricing is per line/month after \$10 Auto Pay/Paperless Billing discount. Data on the plan may be temporarily slowed in times of congestion and may be slower than other traffic. Taxes, fees and add. terms apply.

Things we want you to know: Requires the Unlimited Basic plan and credit approval. Additional terms apply. See uscellular.com/terms for details including obligations to serve Kansas customers. Store locations listed are owned and operated by a UScellular Authorized Agent. ©2023 UScellular

18719252



A LEADER IN THE INDUSTRY

- Residential
- Commercial
- Industrial • Medical

We are your next door neighbors!

Making every day bright!



Call us today for your FREE ESTIMATE!

INSURED AND BONDED
 sunshinecleaningcompany.com

414.215.7347

RESIDENTIAL • COMMERCIAL



“Where Service Is Always in Season”

Free Estimates • Fully Insured
Dependable Service • Low Prices

- Spring Clean-Ups
- Lawn Mowing Maintenance
- Landscape Installation-Design & Maintain
- Pruning & Fertilizing • Mulching & Bed Edging
- Thatching & Aerating
- Soil Re-Grading

NOW HIRING!

Serving Oak Creek and Surrounding Areas

(414) 550-7481

dandblawnservice.com

▶ Meet South Milwaukee’s Youngest Pioneers: Blazing a Trail at Just 3-Years-Old

You don’t expect a classroom full of 3-year-olds to be pioneers – but at Blakewood Elementary, 17 students are just that. They’re the inaugural class in a partnership between the School District and Acelero Learning.

Acelero Learning is a provider of the federal Head Start program which provides daily instruction and health activities for economically disadvantaged children, and social services for their parents.

“Some children have more resources than others to reach their full potential before they start kindergarten,” says Christina Herrera, vice president of Wisconsin Acelero Learning Head Start.

For example, a family with a stay-at-home parent has more time to read to their child throughout the day or attend play groups or activities in the community during the week. Those activities help them on their way to becoming readers and build new social skills. Single-parent or working families might not have the same opportunities.

“We’re here to offer more resources so they can start kindergarten at the same level,” Herrera explains. For the Acelero families, it can mean more than education for their children. “We offer family services to partner with families on the goals they have for themselves and their family,” Herrera says. “Maybe a family is living with another family member, but they want to find their own

housing. We’ll offer them help and resources to find that housing ... We believe partnering with the whole family is essential in supporting children.”

From the School District’s vantage point, it’s a chance to potentially meet its future students and provide a service to families in South Milwaukee.

“It’s an opportunity to serve 3-year-olds in South Milwaukee,” Leo Eckman, director of Special Education and Pupil Services, reports. Before Blakewood’s classroom opened in September, families had to go to sites in Cudahy or possibly farther for open seats.

“By bringing it into the school, it gives an opportunity for them to start in the school district they might attend for their educational career,” Eckman says. And, he adds, it would help students he serves – those that require specialized education. “My interest in it is trying to find inclusive opportunities for students with special needs. Part of the vision for early childhood education is inclusive opportunities.”

Expanding access to early childhood education has a big impact on society in general. “If our country could offer universal 3-year-old kindergarten programming, the research says that would be the best thing we could do for public health,” Eckman states. “While we’re not there yet as a country or a state, we’re looking to capitalize on the opportunities we have.”





Message from the New South Milwaukee School District Superintendent

Deidre Roemer To Join South Milwaukee School District on July 1

Dear South Milwaukee Community,



It is an absolute honor to join the South Milwaukee learning community as the next Superintendent on July 1, 2023. I was drawn to apply for the position from the minute I read the Moral Imperative: "We act with a relentless commitment to remove barriers and care for all students so they feel accepted and will learn without exception."

That mission aligns with my personal beliefs and the work I have led for the last several years in a neighboring district.

As I learned more and more about the School District of South Milwaukee, I was incredibly impressed by the board, the staff and the students I met. When I asked each group about what makes the School District of South Milwaukee special, they each shared a celebration of the diversity of the student body, the way the staff and the students look out for one another, and the fantastic opportunities to participate in educational programs and student leadership. The fact that there are four certified Career and Technical Education Pathways and 14 Advanced Placement courses is excellent.

I also listened to the SMWay Podcast and heard about the Professional Learning Communities, Career and Technical Education options, the Social Emotional Learning work, and a great understanding of the budget. If you haven't taken a listen, I would highly recommend it! Each episode and interview process assured me that the

mission statement drives the work in the District and is important to everyone.

In my previous work, I led our professional development for teachers, our leadership development for school leaders, our academic programming, and our social-emotional learning work. I am excited to learn more about each of these areas and share some of what I have learned and led as well. In addition, I have previous experience leading the Special Education department and was a special education teacher for many years

in five different states. I am also an associate professor at the University of Wisconsin- Milwaukee. There I get to work with math, science and humanities pre-service teachers on learning how to build inclusive classroom communities that hold all students to high standards.

My family is also excited to share this new journey with me. I have been married to my husband, Rick, for the last 15 years.

Our daughter, Emily, is a sophomore at the University of Wisconsin-LaCrosse. Our boys, Nick and Henry, will be freshmen in high school next year. We also have two incredible dogs and a cat that share our home. When we are not working, we love to hike, travel and enjoy family sing-alongs.

I look forward to officially joining the School District of South Milwaukee and the South Milwaukee community in July. I have already made it to the "Sound of Music" at the high school (it was an excellent show!), and plan to attend some school and community events this spring. Feel free to say hello if you see me about town!

"As I learned more and more about the School District of South Milwaukee, I was incredibly impressed by the board, the staff and the students I met."

“Originally I was looking at (the University of Wisconsin-Madison), but I wanted to challenge myself,” she says.

Carroll, she feels, has a more rigorous program than UWM and a 100-percent passing rate on the National Council for Licensure Exam – a test all hopeful registered nurses have to take.

She credits her parents for the drive she and Ana have. Her father works at ACE Worldwide, her mother stays home with the children. Education is really important to them, Belmontes offers. “Neither of them got to finish high school,” she says. “For us (becoming nurses), it’s their biggest accomplishment. We’re doing this for them. We’re accomplishing things they couldn’t do.”

While she’s in college she’ll still work at the restaurant – on days that she’s not working at Walgreens as a pharmacy technician, a job she’ll become certified in when she turns 18. She started there through South Milwaukee’s Youth Apprenticeship Program.

“I need to know about the types of medicine people are taking and the symptoms they’re having,” she explains. “Every day I’m learning something new.”

Ale is learning about all types of medications that are being taken by Walgreens’ customers.



CALL TODAY
(414) 304 - 5570

Locally Owned Experienced Realtors

Whether you are a buyer or seller, we provide an exceptional experience with competitive costs saving you money! Ask us how!

Request a free residential evaluation of your property!

Hometowne Realty LLC
911 Milwaukee Ave, Suite A jjanikowski59@gmail.com

Follow us on Facebook at Hometowne Realty LLC
Proudly serving South Eastern Wisconsin

**Your Neighbors,
Justen & Alana Wink-
Owners**

Like us on Facebook
lawncarebywink@gmail.com

**LAWN CARE BY
WINK**

YOU AND YOUR PROPERTY ARE OUR PRIORITY!
LICENSED AND INSURED FOR YOUR COMMERCIAL AND RESIDENTIAL NEEDS!

WE OFFER:

- LAWN MAINTENANCE
- SEASONAL CLEANUPS
- SHRUB TRIMMING
- EDGING
- AERATION
- MULCH

CALL (414) 852-2506 FOR YOUR FREE ESTIMATE!



Left: Alejandra (“Ale”) Blemontes answers a customer’s question about a cough syrup at the walk-up window at the Walgreens store where she works. Above: Ale answers the phone during her shift at Walgreens.

R.N. Dreams: Student Graduates Early And Gets To Work

Alejandra Blemontes knows how to work. At just 17, she has graduated early from South Milwaukee High School, works as a pharmacy technician, picks up waitress shifts at her godparents’ restaurant, and is enrolled in college to be a registered nurse. She’s an example of a student who has taken full advantage of South Milwaukee’s Career and Technical Education program. The CTE program is a suite of offerings geared to train students for well-paid careers in industries that desperately need employees. The program gives students the necessary certifications and training to start working right after graduation.

“My freshman year, I knew I wanted to get into the (certified nursing assistant) program,” she explains. She worked with her guidance counselor, George Cleveland, to map out a plan for her goal. “I doubled up (classes) my sophomore year. By my junior year, I was done with math. That’s when I did my CNA,” Belmontes says. “In my senior year, I was starting college.”

On top of all of that work, Belmontes was also a member of the Poms dance team and worked as a waitress at her godparents’ Mexican restaurant, Buena Vista, in Milwaukee – a gig she’s had since she was 14.

She’s modeling herself after her older sister, Ana, also an SM alum, who is a nurse, but it was actually her younger siblings – a sister and brother, ages 15 and 5 respectively, who inspired her to her ultimate goal of becoming a neonatal nurse.

“My two younger siblings have cystic fibrosis,” Belmontes shares. “(My sister) wasn’t expected to make it past the age of 7.” Her brother had fewer complications from the disease, a condition that attacks the lungs and makes it difficult to breathe. “I took care of him a lot as a newborn,” Belmontes reflects. “I’ve always had an interest in babies. From being a little girl, I just adored them.”

If admiration and love of her siblings have helped her form her goal, she has a calculating steeliness all of her own that is charting her path. For example, she was dual-enrolled at MATC working on a licensed practical nurse certification tuition-free – something available to South Milwaukee students – but instead is headed to college after receiving a scholarship to Carroll University because it was a quicker path to becoming a registered nurse, a job that comes with more responsibilities, but also more pay.

The Future Is ELECTRIC For Youth Apprentices

One of Josh Pitzo's first questions as a child set the tone for who he would become. That question? "How does it work?" Well, he actually said: "how's it do's" and he said it pointing to the roller coasters as the family drove past Six Flags.

Now a senior in the Career and Technical Education program at South Milwaukee High School, Pitzo is learning how everything works. He's following a construction and trades focus and is part of the Youth Apprenticeship Program.

Pitzo spends his afternoons employed at Faith Technologies in Menasha, Wis. – a electrical planning, engineering, design and installation company.

Youth apprentices are still high school students. They spend part of the day at the high school in the classes they need to graduate, and the other half is a paid position at a worksite.

"I show up at the normal time, 7:30 a.m. every morning. I have four classes, total, (then) I leave and go to work, and I work until 2:30 p.m. or whenever I get out," Pitzo explains. Most recently, he has been working on installing chargers for electric FedEx delivery trucks at a local job site.

"I learn while working. They tell me what to do and I do it," Pitzo says. The chargers pack 600 volts of electricity and are part of the nation's effort to move away from internal combustion engines. "This is all new stuff," Pitzo says.

Working in the electrical field, however, is not new to Pitzo. His dad and uncle are both electricians. "My dad would take me with him on side jobs," Pitzo remembers, and he'd watch his father work.

Pitzo had his eye on the CTE program as soon as he got to high school. If South Milwaukee didn't have a career and tech program, he's not sure how much he would like school. "I just like working with my hands. I struggle to sit down and focus on computer tasks," he says.

He looks forward to graduation and continuing his training as an electrician. It'll take four years just to become a full registered apprentice, but he'll be paid while he's learning. He'd like to be the person who creates bids for jobs and has an interest in project management. He knows there will be training courses and other structured learning he'll have to do, but he wants to be working while doing it – not going to college.

"I'll have four years of experience and they'll look at me as someone who has experience, and not just someone with a degree and no experience," Pitzo admits with enthusiasm.



Josh Pitzo



Visiting Josh's worksite to learn about his project installing electrical charging stations for FedEx vehicles.

EBERHARDY & EBERHARDY, LLP

Proudly Serving Southeast Wisconsin



Paul and Sara Eberhardy

PRACTICE AREAS INCLUDE:

- Estate planning
- Fiduciary services (guardianship, conservatorship and probate matters)
- Probate
- Bankruptcy Chapter 7

Trust the law firm of Eberhardy & Eberhardy, LLP for personal, compassionate service. We offer flexible scheduling and a free half-hour consultation, in person or by telephone, to discuss your needs.

Eberhardy & Eberhardy, LLP

2211 10th Avenue, Suite B
South Milwaukee, Wis.
(414) 744-1283 • fax (414) 744-1911
eberhardylaw.com

Chester W. Grobschmidt SENIOR CENTER



Make New Friends at the Senior Center!

- Friendly camaraderie • Classes
- Bingo • Fitness Center • Zumba
- Senior Meal Site • Sheepshead
- Stockbox Program • Sewing
- And so much more!

2424 15th Avenue • South Milwaukee
414.768.8045
smwi.org/senior-center/



Youth Apprentice Josh Pitzo (center) shows Technology and Engineering Teacher Scott Jaeckel (right) his worksite. Pitzo was working to install electric charging stations for FedEx vehicles.

Modern Career Education: Across the Graduation Stage and Into a Dream Job

For many, the smell of sawdust or the whine of a lathe was the smell of high school. For a long time, shop classes – as they were once called – were fading from a high school education as employers wanted students with college degrees.

That need from area businesses has changed again. Today's employers want certifications and experience, and the smell of sawdust is now drifting out of the Career and Technical Education wing of the high school. That smell might mingle with the smell of baking bread from the culinary training program, or hospital sanitizer from the nursing classrooms. Modern career education courses are meant to get students the skills they need to cross the graduation stage and into a career.

"I think back to when I was in high school it was more college-bound, college-bound, college-bound. You needed to go to college," remembers Christie Gajewski, South Milwaukee's director of instruction. "I think what's shifting is now there are many pathways to be successful, and a four-year degree doesn't necessarily mean that's the only way."

Students have multiple career paths, says Chris Daniels,

the District's work-based learning coordinator and the youth apprenticeship coordinator for the South Shore Suburban Consortium – a collection of districts training their students for future careers.

He said students have the opportunity to earn 17 different certifications: from becoming a certified nursing assistant, earning a ServSafe certification for restaurants to OSHA-10 safety certification for construction sites.

"Students don't just take a class or two, it's really meant to be a sequence of classes with other opportunities culminating in work-based learning," Daniels explains. The guidance department at the high school works with students starting in their freshman year to line up courses that could end in early graduation, and a career or a paid youth apprenticeship with a firm while finishing their senior year.

"High school is kind of the launch pad for adulthood, really," Gajewski reports. "We're trying to make sure kids have what they need so they can either go to college or directly into a career and be successful citizens."



We Care

Planning funeral services and commemorating the life of a loved one are important aspects of mourning. We are using technology and best practices in safety and health to provide families with options and assurance.

*

Our staff is available by phone and email to discuss options for remote broadcast of services, online memorial pages and current guidelines for funeral services that safeguard the health and safety of family, friends and the community.

MOLTHEN-BELL

FUNERALS • CREMATIONS

The most trusted name in bereavement services in South Milwaukee

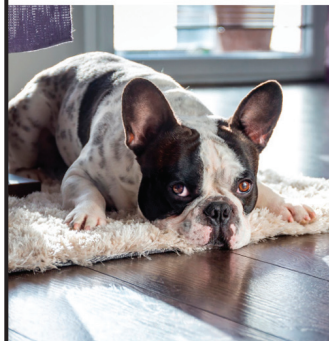
700 Milwaukee • 414-762-0154 • molthenbell.com
molthenbell_cares@wisconsinfh.com

THE FLOORING
STORE AT
YOUR DOOR



FLOOR COVERINGS

international



YOUR CAR WILL LOVE US!



HIGH-QUALITY PAINT
CORRECTION & PROTECTION

- Ceramic Coating
- Paint Correction
- Interior Cleaning • Wash & Wax

Call Gabe for a free quote!
(We are right here in So. Milwaukee.)

414-499-6347

Find us on Instagram:
@caramics_detailing

*Our mobile showroom brings
the flooring store to you!*

CARPETING • HARDWOOD
LUXURY VINYL

262-424-0768

mkesouth.floorcoveringsinternational.com

Plenty of options for
kid & pet friendly flooring

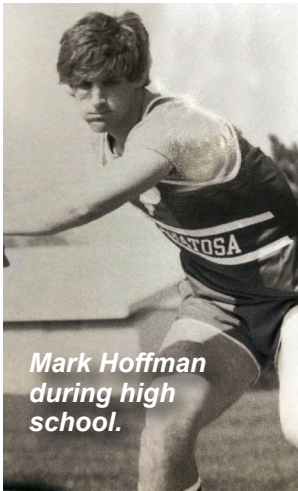


Launching a Legacy

Our Dream, Our Commitment, Our Future

District To Honor Coaches, Fundraising Challenge Issued

When the new South Milwaukee High School opened in 2004, Track coaches Mark Hoffman and Stan Druckrey remember how beautiful the track and field were. “We were able to host big meets, which we weren’t able to do before,” Hoffman remembers. “It was nice to have the buzz around the school.”



Mark Hoffman during high school.

The coaches will soon have that feeling again – the baseball field, softball field, Spaltholz Football Field and the track that runs around it are getting big upgrades this spring and summer. Thanks to a \$1 million donation from the Bucyrus Foundation, a commitment by the School Board, and countless hours of fundraising work by the Launching a Legacy Committee, the Field Surface Improvement Project is underway.

Arguably, there’s no comparable legacy at South Milwaukee than that established and embodied by Druckrey and Hoffman’s track and field program. Druckrey has taught students how to compete in the sport for 51 years, and Hoffman for 33 years. That’s why, when finished, that track will be dedicated to Druckrey and Hoffman in appreciation for their combined 84 years of commitment to the children of South Milwaukee.

The Launching a Legacy campaign is celebrating their careers by offering the coaches’ former students and community a fundraising challenge – a 4 x 400 donation relay race, Druckrey versus Hoffman. Every \$50 contributed

toward a coach’s team is worth 1 meter, resulting in each leg of the relay worth \$20,000. June 1 is the first leg, or deadline,

July 1 is the second, August 1 is the third and September 1 is the finish line. If both teams meet their challenge, \$160,000 will have been raised toward the \$3.3 million cost of the Field Surface Improvement Project.

Donors can also join the \$1,000 Club, with a note to have their donation credited for 20 meters for Team Druckrey or Team Hoffman, with the added bonus of getting into all home SM athletic contests for a lifetime. The intent to dedicate the new track and the fundraising challenge was announced at the Track & Field fundraiser on April 22. Hoffman and Druckrey were invited to reflect on their careers prior to the announcement.

“For me, it’s part of life. I was a runner, I really enjoyed it and had some success,” Druckrey says. “Someone has to give that knowledge, and I feel like I’m one of the best to do that. I couldn’t imagine not doing it.”

Over the years a lot has changed, Hoffman explains. “Society has changed. The technology is way different. Deep down at the core, students have not changed. I think kids are all looking for the same thing they’ve always been looking for.

“They’re looking for positive reinforcement,” he says. “With track and field, it’s an activity that includes a lot of different types of kids. (But) It doesn’t matter if it’s track or football or math. It’s just another vehicle to improve their lives.”



Row: Coach Druckrey; Row 2: Dick Clark, Leroy Stolpa, Ar Magulski, Rick Sima



To join Team Hoffman or Team Druckrey, visit launchinglegacy.info.



SOUTH MILWAUKEE ★ HERITAGE DAYS PARADE

Save the Date Saturday, July 29th



**The Heritage Days Parade Committee
Wishes to Thank all 2022 & 2023 Supporters!!**

The Parade Committee is working diligently to offer
a safe & fun parade for our community.

Please watch our Facebook page
for the latest updates!

 [FACEBOOK.COM/SMHERITAGEPARADE](https://www.facebook.com/smheritageparade)

SMHERITAGEDAYS.ORG

★ DID YOU KNOW ★

\$40,000 - That's what it costs to put on the
parade each year. We need YOUR help to keep
this South Milwaukee tradition alive!
Consider making a donation today:



Send a
Check to:

SM Heritage Days Parade
c/o City Hall
2424 15th Ave
South Milw., WI 53172



Donate Online
Via PayPal:

smheritageparade@gmail.com

We are a 501(c)3 tax deferred foundation, please reach out if you would like documentation.

**NEED A
UNIQUE
WEDDING OR
BIRTHDAY
GIFT?**



VISIT THE BUSINESSES IN HISTORIC DOWNTOWN
GREENDALE, WISCONSIN
"Where History Comes To Life!"
SHOP • DINE • EXPLORE



Visit our
Greendale
"Originals."

GALLERIA  GREENDALE
ORIGINAL ART & ACCESSORIES



SAVE 20%
ON ONE IN-STORE ITEM

NOW THROUGH JUNE 15, 2023
WITH THIS COUPON.

Excluding sales tax. Not valid on
prior purchases or gift certificates.
Limit one coupon per person per purchase.

Featuring Gorgeous
ART TO WEAR
NEW FOR SPRING!

KIMONOS • VESTS • TUNICS • HANDBAGS
RAIN COATS • SCARVES • JEWELRY
Plus, decorative accessories and more!

5640 Parking Street • Greendale • 414-344-8244

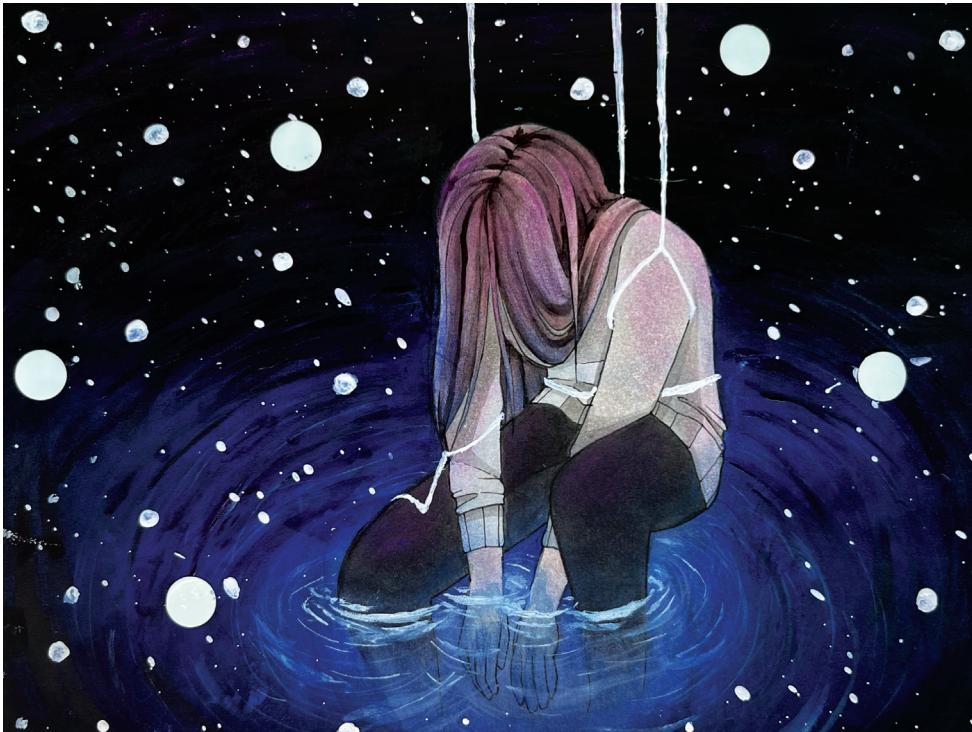
info@galleriagreendale.com • galleriagreendale.com

OPEN MON.-FRI. 11:30 A.M.-5:30 P.M. • SAT. 10 A.M.-3 P.M. • SUN. CLOSED



**Beautiful work
by more than
80 talented
U.S. artists!**

MANY THANKS FOR SUPPORTING OUR LOCAL ARTISTS!



Above: SM High School junior Iz Post created this multimedia that explores the theme of gender dysphoria, the name given to a condition where someone identifies as a gender other than what was assigned to them at birth.

Right: Senior Nevena Banovic created "Figure in a Veil" from clay that is an homage to examples of thin cloth work that Renaissance master could bring forth from marble slabs.



▶ Reflections From Advanced Placement Art Students

Art is meant to challenge you, to ask a question, and express and share, visually, how the artist feels.

Junior Iz Post, 17, has spent a year of Advanced Placement Studio Art exploring the theme of experience of gender dysphoria – the name given to a condition where someone identifies as a gender other than what was assigned to them at birth.

"My theme revolves around how society contributes to gender dysphoria," Post explains. "I've kind of just been mainly building on my feelings – how I've felt society has made me feel like I've had to be a girl."

Post uses "themselves" as the subject of the painting, held by cords or strings, almost like a marionette, sitting – more slumped – into a pool of water. All around the subject is dark with bursts of white. The work is multimedia, formed with Copic markers, colored pencils, acrylic paint and glow-in-the-dark stickers.

"I kind of use myself to symbolize my feelings."
Senior Nevena Banovic, 17, created "Figure in a Veil" out

of clay during her AP Studio experience. Banovic draws inspiration from art she sees around her. "Figure in a Veil" is an homage of sorts to stunning examples of thin cloth work that Renaissance masters could bring forth from marble slabs.

"I was super focused" working on the piece," Banovic says. The contradictory feelings of happiness she experienced and sadness symbolized by someone in a mourning veil are all in the piece.

Clay is not Banovic's preferred medium. "Drawing is my go-to," Banovic explains. Realism – where an artist tries to duplicate an image with intense accuracy – is her preferred form.

"I usually look at any photo I can come across . . . I like the way some people have emotions spread across their faces." Details, too, can be her enemy.

"I have a really hard time accepting the good about the work. The negative things pop out. It's hard for me to see the positive," she admits.



Left: Shelby Stiemke hugging her dad after her last performance in "The Sound of Music" at South Milwaukee High School.



Right: Don Stiemke directing at the Milwaukee Domes.

accompaniment. Various family members followed our parents' footsteps, teaching music or as professional musicians. For "The Sound of Music" to be the last South Milwaukee musical with a Stiemke in it raises the emotional quotient another notch or two.

If one should ask what all the emotion is about, and why there are tears, yearnings and reminiscing as we follow Shelby through her last year at SMHS, one answer lies in the unique way that theater affects its participants. We're all familiar with the benefits of teamwork and cooperation. Usually, we use the language of sports to get to this concept. The bonding created when football teams work out and practice together leads to a connection that can last a lifetime. The result is a stronger culture leading to a better quality of community life.

Shelby gets this – she has been a member of the SMHS track and cross country teams for years, and has learned consistency, mental focus and the value of teamwork. She has forged friendships in both sports and music.

But I propose there is a difference when you participate in theater. There is an additional component that manifests itself when you're in a theatrical production. The underlying mindset of a sports event demands that someone must lose, unless you

are competing against your own best efforts. The underlying mindset of a theatrical performance is to work together so that **everyone wins**. If you collaborate and cooperate, performer and audience alike are entertained, uplifted, inspired, educated or made better.

So, after weeks of making sure the lighting cues are memorized, costumes are functional, sets are sturdy, the overture sounds great, you've figured out your character or you've got those dance steps down, there's this desire that not only are you having fun, but the audience will, too. **Everyone ends up getting to be part of something greater than themselves.**

This underlying mindset adds additional poignancy when an era finally comes to an end. Even if it is for one person, in one family, in one high school, in one community.

Shelby Stiemke in "The Sound of Music" 2023.




FIRSTWEBER
REALTORS®
The human side of real estate.

Cheryl Spychalla

MLS 

414-870-1685
cspychalla@firstweber.com
CherylSpychalla.FirstWeber.com

South Milwaukee Resident

**The Real Estate Market is
HOT HOT HOT!!!**

**Thinking of selling your home?
Contact me for a
No Cost, No Obligation
Comparative Market Analysis.**

**Visit my web page for a quick
look at what your home is worth
and view testimonials.**



**DON'T MISS THIS YEAR'S
DOWNTOWN
MARKET**

**Every Thurs. 3-7 p.m.
June 1 thru Oct. 5**

**At the new Bucyrus Commons
11th and Madison Aves.**

- Fresh produce • Baked goods
 - Arts & crafts • Prepared foods
 - Live music • So much more!
- Meet your friends at the Market!

Mark your calendars now &

SHOP LOCAL!

Visit smmarket.org



Shelby Stiemke



"The Sound of Music" directors for the 1967 production: Donald Stiemke, Connie U'Ren and Art Drews.

▶ Graduation Marks the End of an Era for Family Intertwined in Theatre Program

By Diane Stiemke-Mandella, South Milwaukee High School Alum

An era is ending at South Milwaukee High School. The citizens of South Milwaukee may not have realized it, and SMHS students and faculty will likely not be marking the moment when the final curtain falls, but for our family, this year is iconic. Shelby Erickson-Stiemke will be the last Stiemke family member to leave the South Milwaukee school system when she graduates from SMHS in June.

Our father, Donald G. Stiemke, who passed away in 1992, was the High School choral director at South Milwaukee for 31 years. Shelby is his granddaughter. Our whole family has been involved in music education at South Milwaukee over the years. My four siblings (Dave, Paula, Phil, Brian Dale) and I all participated in the SMHS choirs, shows, concerts, lessons and classes during our high school years under our father's instruction. Our mother, Gert Stiemke, taught music at Lakeview Elementary School and occasionally was a substitute teacher for dad's classes.

After our parents passed away, I volunteered with the South Milwaukee Legacy for almost a decade, focusing on honoring the musical aspects of SMHS heritage. Brian and his former wife, Maren, enrolled their two daughters, Kara and Shelby, at South Milwaukee. They wanted a quality school, with a quality music program.

Brian has said that a good theater arts program can teach students to listen, persevere, improve creative thinking, strive for excellence, perform under pressure and improvise.

But they also hoped that Don's and Gert's granddaughters might spend their school-age years in the same space in which their grandfather gave of his passion, dedication and joy for so long. Both Kara and Shelby enthusiastically participated in as many concerts and shows as they could during their school years.

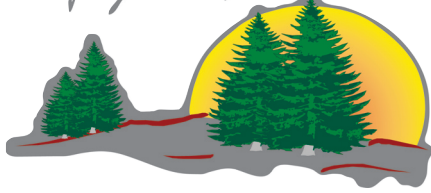
Another reason for the granddaughters to attend SMHS was to experience the astounding transformation of the high school itself. Back when my father taught, performances were presented in the old high school multipurpose cafeteria. The audience all sat on the same level on metal bi-fold chairs. The sound system had dubious volume control and was prone to moments of jolting static followed by cutting out altogether.

For decades, my parents dreamed of a true auditorium, where the theatrical experience didn't involve so much pain and loathing. By the time South Milwaukee built and restored the new 6-12 campus, my parents had passed away, but it was a source of celebration for us siblings.

This year's production of "The Sound of Music" was the third time SMHS chose it for the spring musical. The first time (1967), it was put on by our dad, Connie U'Ren, Art Drews, Annette Kuligowski and Al Pung. Its heartfelt message, based on the true story of the musical Von Trapp family, resonates with our own musical family in a powerful, often emulative way. Our gatherings often included making music with four-part harmony providing our own

MENG'S LANDSCAPING

Simply the Best!



YOUR LANDSCAPE SPECIALIST!

Offering complete landscaping services: landscape design, retaining walls, patios, shrub pruning, planting, spring and fall cleanups, core aeration, fertilizing and lawn care, and so much more!

Get Your
Yard
Ready for
Spring!



(414) 750-1387 • mengsnow.com
simplymengs@gmail.com

CONFIDENTAL



Grant Park Dental | Downtown Dental Group

DR. COSTELLO NAMED TOP DENTIST

AGAIN

Our success over the last 30 years in Downtown and the South Shore is a testament to our caring team and the level of service provided by Dr. Michael Costello and Dr. Vikoriia Senych to families and individuals. Call to schedule a visit to one of our convenient locations and discover for yourself why ConfiDENTAL is consistently recognized as one of Milwaukee's best dental practices.

COMPREHENSIVE DENTAL CARE INCLUDING:

Family Dentistry | Restorative Dentistry | Cosmetic Dentistry
Clear Align | Dental Implants | Dental Emergencies

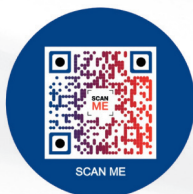
DOWNTOWN DENTAL GROUP - 414.278.6070 | GRANT PARK DENTAL - 414.764.6070
confidentalmke.com



YOUR LOCAL REALTORS OF 22 YEARS

We help dream homes for families come true!

ARE YOU READY FOR YOUR DREAM HOME?



WE KNOW THE MARKET!!

Call/Text/Email

414-840-0201

ChampagneRealtors@gmail.com

The Champagne Team
Marty & Abby



▶ South Milwaukee School District Highlights

8th Grade Trip to D.C.

A tradition has been reborn! This spring, three busloads of 8th graders and a handful of 9th graders toured Washington D.C. The students were given a tour of the Capitol Building, saw the White House and Supreme Court building, visited Mt. Vernon – George Washington’s estate, and toured numerous museums over a three-day trip.

High School Teacher Named Finalist for Presidential Award

High School Math Teacher Cori Moran is one of seven Wisconsin Educators named finalists for the 2023 Presidential Awards for Excellence in Mathematics and Science Teaching. According to the Department of Instruction, the award “is considered the highest honor given by the U.S. government for science, technology, engineering, mathematics and/or computer science teachers. The seven teachers were nominated for their pedagogical and content knowledge, and for leadership in their field.”

South Milwaukee Student Senate Honored at WASC

The South Milwaukee Student Senate was honored at the Wisconsin

Association of School Councils in April at Lambeau Field. The senate won several gold and silver awards for various competitions and won the overall competition, the Inspire Award.

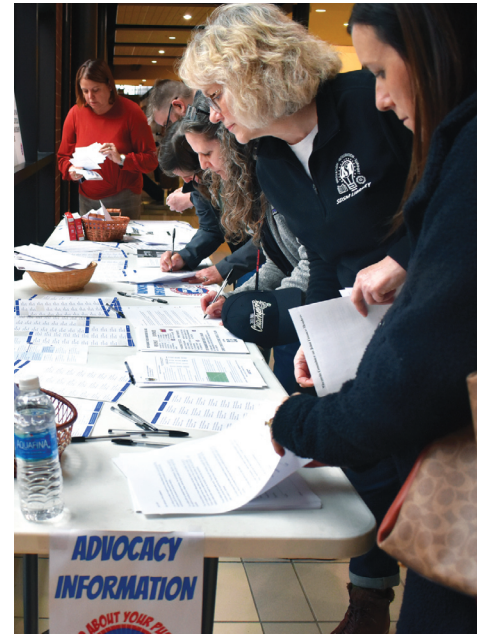
The conference is host to a number of competitions like impromptu speech and writing, and other presentations like examples of Standards of Excellence from a year’s worth of activity as a senate, digital or physical scrapbooks, T-shirt designs and graphic designs.

Also at the conference, Ms. Julie Lietz was named Regional Advisor of the Year, and Mr. Ante Udovicic was awarded Administrator of the Year.

South Milwaukee Supports Public Education

An estimated 200 people attended the “Speak Up for Public Education” event at SM High School on Wednesday, April 19, to support public education. There were songs celebrating schools, and members of the community painted giant banners in support and filled out posters about what our students deserve.

Parents, students, teachers, administrators and elected officials mailed more than 400 postcards and letters to members of the Wisconsin



More than 400 letters and postcards were mailed to elected officials calling on the State Legislature to increase funding for schools.

Committee on Joint Finance asking them to fully fund public schools. The School Board recently cut \$1.1 million from the District budget by eliminating positions and drastically reducing building budgets to partially close a \$1.6 million gap. It will use fund balance for the other \$500,000.

Schools have had zero increases in spendable per-pupil funding from the Legislature in the current biennium, despite an estimated \$7 billion budget surplus in Madison. The School Board has joined with districts in the region calling for a \$1,510 increase in the per-pupil revenue limit and a 60-percent special education reimbursement rate in the biennium currently being discussed.

Hintz, Vega Win Reelection, Jurowski Elected to School Board

School Board members Patrick Hintz and Augie Vega were re-elected to the School Board in April, and voters chose Nathan Jurowski to fill a seat vacated by Sarah Brooks whose term had expired.

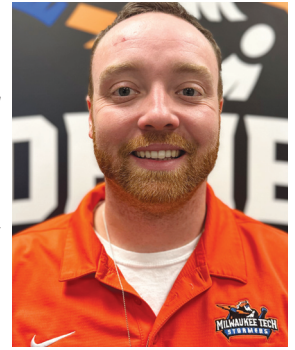
The South Milwaukee Student Senate won the overall Inspire Award at the Wisconsin Association of School Councils at Lambeau Field in April.



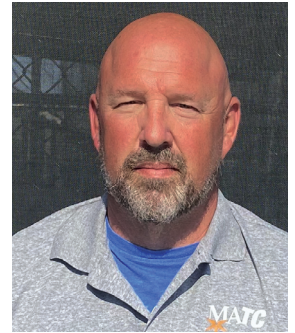


The new athletic field includes blue-colored turf and the Stormers' logo behind home plate.

Right: New Stormers' baseball coach Caleb Bounds.



Below: Joe Kuntner is the new softball head coach.



So far, the new field is a hit. "We're very excited about the season, and we're very fortunate to have these facilities," says Caleb Bounds, MATC's new baseball coach who was hired last July. "I think we're going to have a very competitive team, and we have a real shot to win a lot of games."

Thanks to the new turf field, Bounds says he had to cancel only one practice in the fall because of bad weather. "We actually went on it and practiced after it rained," he says. "To have a unique field, to be able to practice every day, to get out there earlier and to play more games are big selling points to students we're recruiting."

"Players in the Midwest understand the weather," Bounds adds. "We also know it's not just us who are affected. But thanks to this field, we'll be able to play more than other teams and that will only help us achieve our goals."

Also, having the turf field will save the college between \$20,000 and \$30,000 in annual maintenance, Mrozek says.

The baseball team played one game on the turf field last season – a playoff game on May 12, 2022. While waiting for the turf to be delivered and installed, the team played home games at the Rock Complex in Franklin and at Henry Aaron Field in Glendale.

"Essentially they were nomads," Mrozek says. "They were a team without a home, yet they still had a very successful season."

Under previous head coach Zac Charbonneau, the Stormers finished with an overall record of 34-18-1 and were 5-4-1 in conference play. They won two games at the NJCAA Region IV Tournament before being eliminated. In 2021, the Stormers finished 19-17 – their first season with a winning record in at least 10 years.

The baseball team opened the 2023 season on February 25 at North Arkansas College in Harrison, Arkansas. After eight games down south, MATC played a doubleheader against Kishwaukee College on Friday, March 10, at the new field.

"There is something to having a home, playing at your own campus, playing on a field that has your name on it and that has your colors on it," Mrozek says. "For us, it's a real home field."

See baseball and softball game schedules at matcstormers.com.

NEW SEASON, NEW COACHES

Milwaukee Area Technical College will have some new faces in the dugout this spring.

Caleb Bounds is the new Stormers' baseball coach. He was hired last July to replace Zac Charbonneau, who left for the University of Wisconsin-Parkside after four seasons. Joe Kuntner is the college's new softball head coach.

Bounds previously coached at Rock Valley College in Rockford, Illinois, helping the Golden Eagles to the lowest ERA in program history. "He's a great fit," says MATC Athletic Director Randy Casey. "He's got a junior college background and he has a wealth of experience as a player and a coach, and is bringing that experience to us."

Before working at Rock Valley, Bounds coached at Columbia College, an NAIA college in Columbia, Missouri, and was also the head coach of the Chillicothe Mudcats of the MINK (Missouri, Iowa, Nebraska, Kansas) Summer League. Bounds played baseball at William Woods University and at North Central Missouri College.

Kuntner comes to MATC with 22 years of coaching experience as a head and assistant coach at the college, high school, club and little league levels. For the last four years, Kuntner has been the recruiting coordinator at Delta Sports Performance Center. During that time he helped place four softball players at the NCAA Division I level, and more than 20 players at the college level.

"We are excited to welcome Joe Kuntner to the MATC family," Casey says. "He is a great fit for our program. His coaching and recruiting experiences provide us a chance to be successful."

Ethan Rossow slides headfirst into third base during a game last season. Rossow is one of several players returning for the 2023 season.



Milwaukee Area Technical College's Daniel Flores swings away during a game last season. Flores is back with the Stormers for the 2023 baseball season.



▶ ROLLING OUT THE ROYAL BLUE CARPET

MATC Baseball and Softball Teams Will Play on New Turf Field At OC Campus This Spring By Mark Feldmann

Milwaukee Area Technical College has dreamed about a field like this for more than a decade.

For years, the MATC baseball team played on a natural grass field at the college's Oak Creek Campus on South Howell Ave. Located on the west side of the campus, the field was subjected to the whims of Wisconsin weather – with its wet, cold and even snowy springs – making meaningful maintenance almost impossible and severely limiting the number of practices and games.

“Keeping the grass field in shape was very intensive,” says Travis Mrozek, MATC’s assistant athletic director. “Special clay and sand were required, and there was a lot of watering and fertilizing needed. If you got just a little rain, the field would feel like a sponge. There would be standing water and players could get hurt playing on it like that.”

“With the winters and springs we often got, we were lucky to play four or five dates in a season,” Mrozek adds. “When that happens, that doesn’t help recruit students. Kids

will go where they can play, plain and simple.”

This spring, the Stormers have a brand new place to play and call home. MATC’s baseball and softball teams plan to play all their home games at an artificial turf field at the Oak Creek Campus, Mrozek says.

“There’s a real excitement to start using it,” he says.

After a feasibility study showed the benefits of a turf field, the project was added to the college’s three-year facilities plan in June 2020. The \$2.2 million project included covering the entire field with bright green turf outlined in dark blue, erecting a new scoreboard, constructing new dugouts, and adding new bullpens and batting cages, Mrozek says.

MATC paid for \$1.5 million of the project, and a \$700,000 water retention grant from the Milwaukee Metropolitan Sewerage District covered the remaining costs.

MATC also had to get permission from Boise State University to install colored turf on the field, Mrozek says. Boise State, famous for its deep blue turf football field, owns the trademark on using any type of colored artificial surface.

**Coming June 3rd & 4th 2023
3rd Annual ...**

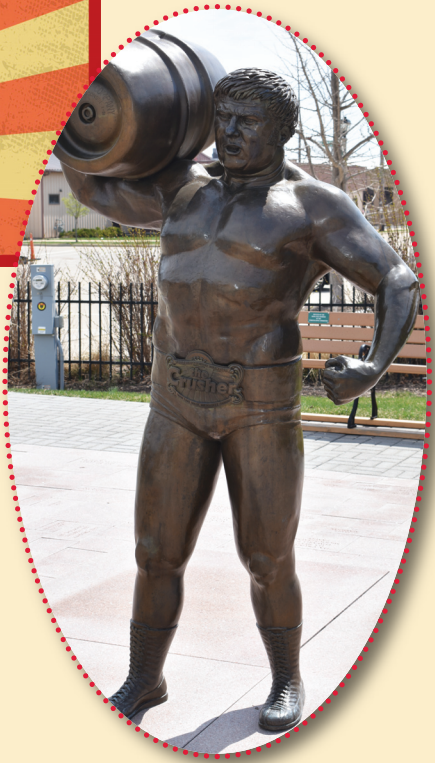
Crusherfest

JOIN THE FUN AT CRUSHERFEST ON SATURDAY-SUNDAY, JUNE 3-4.

The festival at the new Bucyrus Commons will offer live wrestling, music, Crusher merchandise, beer, delicious food, the Mr. Saloon competition, famous wrestlers and autographs, 50/50 raffle, and a 10 a.m. polka mass on Sunday. Don't miss this unique South Milwaukee event honoring the late, great "Crusher"

(Reginald Lisowski: 1926-2005) born in our great City and the "Wrestler that made Milwaukee Famous!"

Visit crusherfest.org for more information.



Check Your Trees from WE Energies

With the arrival of spring, it's time to check the trees in your yard. Winter's snow, ice and strong winds can take their toll on your trees. Now that spring is almost here, it's an excellent time to survey your landscaping. Look for hanging and/or dead branches, overgrown limbs and anything growing into the overhead electric lines. A few small steps can ensure the health of your trees and reduce the risk of anything falling on the lines.

You Can Be Proactive

The ultimate goal is to prevent problems before it gets too late. You can be proactive by staying away from the power lines when planting new trees. You should also have existing ash trees checked for Emerald Ash Borer. The insect is a killer – and brings down massive trees far from WE Energies' legal easement. Eliminating those infected trees could prevent massive problems in a storm.

If your trees need work, keep a few guidelines in mind:

- Use a professional for tree trimming and removal.

- Check with WE Energies if you are unsure the work is clear of the lines.
- Make safety your top priority.

What is Handled by WE Energies

- WE Energies proactively schedules tree trimming on a six-to-eight year cycle. Homeowners receive a letter and/or a door hanger when work is anticipated.
- If you have a tree causing concern, call 800.242.9137 and a WE Energies forester will visit your property to evaluate the situation.
- Crews perform work needed to maintain reliable electric service. The preference is to prune branches, but the utility may need to remove a tree. You are not charged for this service, but because you own the trees on your property, the removal of most debris is your responsibility.
- WE Energies does not trim branches close to phone or cable lines. Call those providers if you have concerns.

For more information, visit we-energies.com/safety/tree-safety.





▶ Bucyrus Commons Grand Opening Sunday, May 21: Community Invited to Ribbon-Cutting Ceremony

On Sunday, May 21, three years of planning, designing and construction will culminate in the grand opening and ribbon-cutting for the new Bucyrus Commons space in downtown South Milwaukee.

The space at 11th and Madison Avenues has been used for the Downtown Market, European Beer Gardens, and as the home of events like Crusherfest and Festival of Trees.

The site now includes a handsome open-air pavilion, permanent restrooms and an event stage.

The project began with a \$2 million contribution from the Bucyrus Foundation to be put toward the Bucyrus Club redevelopment and construction of the Bucyrus Commons. With the opening of the Commons, the plans will have

officially been fulfilled. The initial investment has sparked new energy and momentum in downtown South Milwaukee.

The grand opening, being referred to as “Afternoon at the Commons,” will be held from 1 to 5 p.m. The family-friendly event will include a ribbon-cutting ceremony, kids’ activities (e.g., bouncy house, face painting), a magician, great food and a performance by the popular WhiskeyBelles. The event kicks off with the ribbon-cutting and a flag ceremony at 1 p.m., followed by the magician’s performance at 1:30 p.m. and the WhiskeyBelles at 2:15 p.m.

Come help us celebrate this new space!



The new covered pavilion at the Bucyrus Commons will offer protection from the elements during the Downtown Market this summer.

“AFTERNOON AT THE COMMONS”
Sunday, May 21 • 1-5 p.m.
Everyone is invited!

The new Bucyrus Commons will be officially opened with an assortment of activities for all! The entire South Milwaukee community is invited to come downtown to see this exciting and handsome new space, including a covered pavilion for the Thursday Market, a band shell and a beautiful grassy area to relax on and enjoy the music!



Mural Project Adds Color, Excitement and Interest To Downtown Milwaukee

Earlier this year, the City of South Milwaukee put out a call for artists to paint a mural on the west wall of the South Milwaukee Human Concerns building at 1029 Milwaukee Avenue. The mural will be a new neighbor to accompany the Bucyrus Commons and Da Crusher Statue. The project is completely funded through a grant from the Bucyrus Foundation.

The goal of the desired mural design is to bring the community together, attract visitors to the downtown, and to represent new beginnings for the City of South Milwaukee.

The submission deadline for interested muralists was in March. In total, 113 mural designs were received, including international submittals.

A seven-person mural design committee has been assembled to narrow down the submissions and ultimately move forward with one artist. If all remains on schedule, the new mural could be unveiled as early as this fall.

Check out some of the exciting and original design submissions seen here!



Examples of some of the 113 mural designs submitted to paint on the exterior of the South Milwaukee Human Concerns building at 1029 Milwaukee Avenue.



Welcome New South Milwaukee Businesses

Please say welcome to these new South Milwaukee businesses that have joined our vibrant business community over the past year!

- **4Ks Creations**
1231 Milwaukee Avenue
- **A Green Dog Grooming**
1131 Marquette Avenue
- **A-1 Heating & Cooling**
3206 9th Avenue
- **Atwood Hwy. BBQ Company**
925 Madison Avenue
- **Bakehouse23 MKE**
1309 Milwaukee Avenue
- **BPH Inc./Global Power**
2201 12 Avenue
- **Christoper & De Leon Law Office**
2013 14th Avenue
- **Duprees**
915 Milwaukee Ave.
- **Immortal Toys and Collectables**
907B Milwaukee Avenue
- **Les Fashionistas**
1211 N. Chicago Avenue
- **McCullough Massage & Healing Center**
1300 Milwaukee Avenue
- **Mi Casita**
800 Milwaukee Avenue
- **Milwaukee Avenue Music**
1011 Milwaukee Avenue, Suite 100
- **Mr. Fix It Auto Repair & Sales**
1216 Missouri Avenue
- **OLK Inc.**
920 Milwaukee Avenue
- **Omen**
1310 Milwaukee Avenue
- **Omen Alternative Music & Media**
1311 Milwaukee Avenue
- **Pearl Aesthetics**
1227 Milwaukee Avenue
- **SDK Firearms Defense Training**
916 Milwaukee Avenue, Suite E
- **Sista Sista Clothing & Jewelry**
916 Milwaukee Avenue, Suite A



Officer Dan Fournier shows off one of the special Rocket K9 T-shirts on sale at the SM Police Department for only \$10.

Below' Your purchase of a Rocket T-shirt or plush toy will benefit the new K9 program.



▶ South Milwaukee Police Department Fundraises To Establish K9 Unit

Last fall, the South Milwaukee Police Department announced it was fundraising to establish a K9 unit. Residents and local organizations immediately responded with their support. Individual donations came rushing in and sales of our K9 plush dogs and T-shirts took off. The City's elementary schools also participated by holding a penny war and voting on the future K9's name. The penny war brought in more than \$5,600 dollars – and the dog's selected name, by a landslide, was "Rocket."

In order to assist with fundraising, the SM Police Department created a 501(c)(3) organization to collect and manage funds. Donations will be critical to launch and sustain this program. Donations can be dropped off or mailed to the SMPD at 242415th Ave. in South Milwaukee. Checks can be made out to the "SMPD K9 Program."

According to Police Chief Jessup, "We are constantly striving to provide the best police service possible and I believe the addition of a K9 will enhance the police-community relationship. It will provide additional capability during certain types of investigations and will be a great way for children to engage with our officers during community events. We look forward to making this new initiative happen and are excited about the possibilities."

From Mayor Shelenske, "Thank you to those who have already donated or purchased a T-shirt or plush dog. I am very proud of the work the SMPD does,

and I am excited at the prospect of expanding its capabilities with the addition of a K9 unit."

Throughout the spring, the SMPD has been engaged in an internal selection process to choose the officer who will work with the dog, and Officer Matt Edwards has been appointed as Rocket's new handler. The chosen dog breed is a Dutch Shepherd, born in Holland and trained at the Jessifany Canine Services in Iron Ridge, Wis. (well known for training the best dogs to become K9 officers).

We can't wait to see Officer Edwards and Rocket in action later in the year! Thanks to the entire South Milwaukee community for its support of the City's new K9 program!



Officer Matt Edwards has been appointed as Rocket's new handler. Here he is seen with Rocket at Jessifany Canine Services in Iron Ridge, Wis.



A Salute to the South Milwaukee Municipal Band

The South Milwaukee Municipal Band has been bringing music to the City since it was established in 1935. The band has a rich history that includes performing at VFW conventions around the country, and marching in the famous Schlitz Circus Parade and South Milwaukee's own Spectacle of Music.

The "Muni Band" continues to be active today, supporting the City of South Milwaukee at patriotic events, and delighting audiences at area retirement and care facilities, summer outdoor concerts, and other venues. The band's repertoire includes patriotic music, Broadway and movie tunes, marches, classical concert band arrangements, and more.

The band's director, Alex Brandon, graduated from Carroll University with a bachelor's degree in liberal arts-music, and he earned his teaching certification for instrumental and general music from the University of Wisconsin-Milwaukee. Alex teaches elementary band in the Oak Creek-Franklin School District. He also serves in the Navy Reserves and occasionally performs for funeral honors and other naval ceremonies.

Comprised of volunteer musicians from South Milwaukee and surrounding communities, the band is sponsored by the South Milwaukee Recreation Department. The group rehearses on Tuesday evenings (7:30-9 p.m.) in the South Milwaukee Middle School band room. New members are always welcomed. Membership is open to high school students and adults. Enjoy the fellowship with other musicians while enriching your musical skills.

We are lifelong musicians who enjoy sharing our talents with the community. Come join in the fun with the South Milwaukee Municipal Band!

For more information, contact Jody Daharsh at 414.764.6279.

DBHW Wealth Partners

TRUST US FOR ALL YOUR INVESTMENT AND FINANCIAL PLANNING NEEDS

We're here to help you pursue your financial success!

All of our energy, commitment and efforts are focused on YOU and your complete satisfaction.

Let us help make sure your investments align with your goals.

CALL TODAY TO SCHEDULE AN APPOINTMENT.



SEE OUR NEWLY EXPANDED & RENOVATED SPACE!

DBHW WEALTH PARTNERS

1125 Milwaukee • South Milwaukee • 414-764-7330
dbhwwealthpartners.com • Monday-Friday 8 a.m.-4 p.m.

IS YOUR GOLF GAME READY FOR THE NEW SEASON?



PRIVATE GOLF INSTRUCTION

With Teaching Professional
Bruce Krajcir

- LESSONS FOR ALL SKILL LEVELS
- SINGLE-LESSON OR MULTIPLE-LESSON RATES
- FLEXIBLE TIMES

Book your lesson(s)
TODAY!

**CALL BRUCE AT
414-322-3500**



Newly appointed City Deputies (from left): Deputy Treasurer Danielle Heller and Deputy City Clerk Shannon Hahn are ready to assist you at City Hall.

City Staff Spotlight

The City of South Milwaukee is pleased to congratulate two new deputies at City Hall. Both are passionate about their work and are ready to serve the residents of South Milwaukee!

Deputy Treasurer Danielle Heller

I grew up in South Milwaukee and attended the former St. Sylvester's school for all of elementary and middle school, and graduated from South Milwaukee High School in 2000. I graduated from Wisconsin Lutheran College with a bachelor's degree in history and secondary education. After college, I taught English in Japan for two years through the Japan Exchange and Teaching Program. I loved living in Japan and hope to return to visit someday. I'm married with children who keep me very busy outside of work.

I started working part-time for the City of South Milwaukee in 2011 and have worked in various departments since then. I have worked full-time in the Treasurer's Office since 2016. Working for the citizens of South Milwaukee has been rewarding and I sincerely enjoy the work that I do.

What was your first job?

My first job was at Dairy Queen in South Milwaukee. I learned how to use a cash register and gained valuable customer service experience.

What is your favorite thing about working in local government?

My favorite thing about working in local government is helping citizens and seeing how the work we do contributes to improving the community.

What do you love most about South Milwaukee?

I love the history of South Milwaukee and how my family fits into its story. My relatives helped care for Grant Park in its early stages, worked at Bucyrus-Erie and Kyle/Cooper (Eaton), served veterans at American Legion Post 27, and volunteered on the auxiliary police force. I'm so proud to be part of their legacy here.

Describe South Milwaukee in three words.

Friendly, hard-working and naturally beautiful.

If you were to check out one book from the South Milwaukee Public Library, what would it be?

I would check out "Thief River Falls" by Brian Freeman, or a similar mystery/crime thriller.

Deputy City Clerk Shannon Hahn

I was born and raised in the City of Milwaukee. I have three children that consume a lot of my spare time. I am always listening to music. I enjoy attending concerts and I like to see local bands perform.

I have worked in local government for over a decade. I was the "Jane of All Trades" in my last municipal role, where I gained knowledge that will help me here in South Milwaukee. I am really glad to be with this new team and look forward to my future with all of you.

What was your first job?

I was 14 years old when I got my first job. I was a cashier at a little locally owned grocery store in Milwaukee.

What is your favorite thing about working in local government?

I like working with the residents and getting to know the "regulars" – helping them and stepping up when they need us the most. I also love working the elections.

What do you love most about South Milwaukee?

I like that Grant Park is close by so I can spend time there again. It reminds me of my childhood. I used to frequent the park often with family and friends.

Describe South Milwaukee in three words.

Bustling, charming and lively.

If you were to check out one book from the South Milwaukee Public Library, what would it be?

Anything by Jodi Picoult. I really enjoy her novels. I haven't read a bad one yet.

Ms. Kim's Amazing Animals

Thursday, July 13 • 10 a.m.

Come meet and learn about Ms. Kim's amazing animals! For kids of all ages and their caregivers.

Storytime at the Bucyrus Museum

Tuesday, July 18 • 10 a.m.

This program is off-site at the Bucyrus Museum at 1919 12th Ave. in South Milwaukee. Free admission to the museum is included with storytime. For kids of all ages and their caregivers.

Wehr Nature Center

Tuesday, July 25 • 10 a.m.

Learn about bees with Wehr Nature Center! For kids of all ages and their caregivers.

Ice Cream Storytime

Tuesday, August 1 • 10 a.m.

Make your own ice cream sundae! For kids of all ages and their caregivers.

Subscribe to the South Milwaukee Public Library's quarterly Newsletter!

Call the Library 414.768.8195 or sign up online at smlibrary.org/newsletter/

Celebrating 20 years representing Erie Insurance!

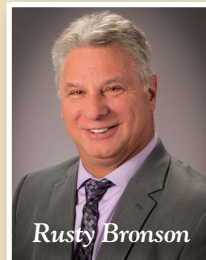
BRONSON

INSURANCE SERVICES LLC

YOUR Independent Agency for ALL of Your INSURANCE Needs:

- Auto • Home • Renters • Life • Commercial
- Flood • Transportation • Medicare Supplements
- Workers' Compensation

Representing some of the best insurance companies in the region: **ERIE**, **Progressive**, **Main Street America** and several outstanding carriers!



Rusty Bronson

LOOKING FOR A NEW MEDICARE SUPPLEMENT? CALL US TODAY, WE CAN HELP!

"We always look out for the client's best interest. PERIOD."

Call (414) 885-5000 or text (414) 928-8478

Email rusty@bronsoninsurance.com

2345 W. Ryan Rd. • Suite H • Oak Creek

Adopt Your Drain Program

The Adopt Your Drain program in South Milwaukee prevents pollutants from reaching our fresh waterways. Adopt Your Drain allows you to find a storm drain near you to clear of debris every couple of weeks, especially before and after rainfall. This program also helps prevent flooding in intersections by allowing water to flow into storm drains. Visit adoptyourdrain.com to find out more information about how to adopt the drain nearest you.



Tony's Grant Park Garage
WHERE BAWSON AVENUE ENDS AND SERVICE BEGINS

Tires • Brakes • Oil Changes

Tony's Award Winner

COMPLETE AUTOMOTIVE & TRUCK REPAIR

414 762-9120

CALL • YOUR FRIENDLY NEIGHBORHOOD GARAGE, just like the good ol' days • US

Tune-ups • Exhaust • Alignments

We Fix • Check • More • ASE Certified Mechanics • NAPA Auto Parts

ON THE WEB: TONYSGRANTPARKGARAGE.COM 1523 N. CHICAGO AVE. • SOUTH MILWAUKEE

City of South Milwaukee Public Library

Upcoming Programming

Here is a sampling of spring/summer Library programs for children, teens and adults. Please visit smlibrary.org or call 414.768.8195 for more information – dates/events are subject to change.

ADULT PROGRAMS

Annual Plant Swap

Saturday, May 20 • 10 a.m.-12 p.m.

Bring a plant, take a plant! Share your plants, bulbs, seedlings, starts or cuttings with other gardeners and houseplant aficionados. All types of plants are welcome. Please label your plants with all known information when bringing them to the swap, and bring a bag or box to bring your new plants home.

All Together Now!

Summer Reading 2023

Mon., June 12 to Sat., August 12

Summer Reading isn't just for kids! Receive an entry into prize drawings for every book you read or listen to this summer. Participate online on Beanstack at smlibrary.beanstack.org or with paper entries at the Library. Winners will be notified the week after summer reading ends.

Habitat Helpers: Gardening for Hummingbirds and Butterflies

Thursday, July 13 • 5:30 p.m.

Learn how to make your outdoor space come alive with hummingbirds and butterflies. Participants will discover how to create a hummingbird and butterfly habitat in their own yard, garden, or deck. We will discuss the best plants to use that attract these flyers, what the best type hummingbird feeder to use, if butterfly houses actually work and effective planting strategies. Presented by Wehr Nature Center.

Snacks Around the World

Thursday, August 10 • 5:30 p.m.

Try candies and snacks from around the world and rate your favorites! If you have food allergies, please be aware that the snacks we are trying may

contain nuts, wheat, milk, and/or soy. Registration is required and opens Thursday, July 27.

TEEN PROGRAMS

All Together Now!

Summer Reading 2023

Mon., June 12 to Sat., August 12

Receive an entry into prize drawings for every hour you read this summer. Participate online on Beanstack at smlibrary.beanstack.org or with paper entries at the library. Winners will be notified the week after summer reading ends.

Pokémon Terrariums

Monday, July 10 • 2 p.m.

Make your own Pokémon terrarium! Registration is required and opens Monday, July 3.

Snacks Around the World

Thursday, August 10 • 2 p.m.

Try candies and snacks from around the world and rate your favorites! If you have food allergies, please be aware that the snacks we are trying may contain nuts, wheat, milk and/or soy. Registration is required and opens Thursday, July 27.

KIDS' PROGRAMS

STEAM Programs

Mondays: June 19, July 10 and

July 24 • 4 p.m.

Join us for a science/art-based program! For kids aged 4-12 years old. Registration may be required.

Music & Movement

Wednesdays June 14-August 2
10 a.m.

Join us for music, dancing, flannel board activities, and a short story! For kids ages 0-3 years old and their caregivers.

LEGO Club

Thursdays June 15, July 20 and
August 17 • 4 p.m.

Join us on the third Thursday of the month to build with LEGOs! For kids ages 5-12.

Library at the South Milwaukee Downtown Market

Thursdays June 29, July 27,
August 31, September 28 • 3-6 p.m.

Join us on the last Thursday of each month at the South Milwaukee Downtown Market for a craft. We will be there from 3-6 p.m. or until the crafts are gone. See you at the Market!

Moana Party

Tuesday, June 13 • 10 a.m.

Join us for a short storytime, crafts, and activities about Moana! Moana will be there to take pictures, so bring your cameras. For kids of all ages and their caregivers.

Magician Rick Allen

Tuesday, June 20 • 10 a.m.

Join us for a magic show with Rick Allen. For kids of all ages and their caregivers.

Fourth of July Storytime and Crafts

Tuesday, June 27 • 10 a.m.

Join us for storytime and crafts celebrating the Fourth of July. For kids ages 2-8 and their caregivers.

Brass Bell Music Instrumental Discovery Zone

Tuesday, July 11 • 10 a.m.

Brass Bell Music will be here with their musical instruments that kids and adults can try out. For kids of all ages and their caregivers.



These kids are eager to explore the toy offerings at Immortal Toys and Collectables.

something right by providing that opportunity for them.”

Peter and Enilda Burgos personify the type of South Milwaukee business owners that the City hopes to find more of – people who are invested in South Milwaukee and recognize its character, charm and value. “Everyone is watching your back here,” reports Peter, “and having them wanting you to succeed is a really great feeling.”

Immortal Toys and Collectables
 907 Milwaukee Ave. • 414.301.4340
 facebook.com/
 immortaltoysandcollectables
 @immortaltoysandcollectables
 immortaltoys22@gmail.com



The shelves at Immortal Toys and Collectables on Milwaukee Street in downtown South Milwaukee are filled to the ceiling with vintage toys as well as modern favorites. The shop is owned by South Milwaukee residents Fermin (Peter) and his wife Enilda Burgos who love the community.

50th Anniversary Celebration



WE'RE GOLD BECAUSE OF YOU!

Thanks to support from residents like you, South Milwaukee Human Concerns has provided help and hope for 50 years through our food pantry!

To recognize this important milestone, please join the celebration:

**SATURDAY, SEPTEMBER 16
 2 – 8 P.M.**

**The New Bucyrus Commons Pavilion
 1022 Madison Avenue**

- Music by Cactus Brothers
(National recording and touring artists)
- Food and drink *(Sales benefit SMHC)*
- Non-perishable food donations welcome
- Raffle baskets and 50/50

Thanks to event sponsors



Spirits of Norway Vineyard
 A BOUTIQUE WINERY IN THE TOWN OF NORWAY, WISCONSIN

smhumanconcerns.org

SMHC receives no taxpayer funding and is completely supported by donations and the invaluable help of volunteers.



Business Spotlight: Immortal Toys and Collectables Feeding His Passion and Dream, And Loving South Milwaukee

Fermin (Peter) Burgos co-owns Immortal Toys and Collectables with his wife Enilda.



As Downtown South Milwaukee continues to expand with exciting new businesses popping up all over, one of the City's newest retail stores is also becoming one of its most popular.

Introducing **Immortal Toys and Collectables**, at 907 Milwaukee Avenue, where you can step back in time to find your favorite toys from the '80s and '90s to the present. Co-owned by the husband-and-wife team of Fermin (Peter) Burgos and his wife Enilda, Immortal Toys and Collectables packs an amazing variety of nostalgic toys into its compact Milwaukee Avenue storefront.

Remember days gone by and discover the toys you loved the most when you were a kid! These toys are now enjoying a renaissance of being appreciated by a new generation, along with bringing back fond memories of your childhood. And creating this business has been Peter's passion and lifelong dream.

"I love having my first business in South Milwaukee," says Peter, "with the City's small-town feel. My wife and I also enjoy being a part of the revitalization of the business district along Milwaukee Avenue."

So how did Peter get started in this fascinating business? While the store officially opened on September 1 of last year, the store's concept had been brewing in Peter's head for awhile. For the past few years, he had been collecting toys from his childhood that led him to start sharing his collection with other collectors online and with multiple toy groups that he was a part of. "Then my wife suggested opening a brick and mortar location – although I think this was her way of angling to get our basement back!" laughs Peter. The couple live in South Milwaukee so they are familiar with the area, and they grabbed the empty spot on Milwaukee Street that they turned into Immortal Toys – a name he felt represented his undying love of toys and collecting.

Some of the most popular lines of toys that are carried at Immortal Toys include Funko Pops, Star Wars, a multitude of wrestling figures and Transformers. But just how does Peter find the toys he sells?

"I find my inventory by attending estate sales, flea markets, auctions and rummage sales – and from toy distributors and other collectors," explains Peter. "Sometimes people walk in off the street with vintage toys to sell that I evaluate and decide whether or not they are a good fit in the store," he adds.

While this entrepreneur is enjoying his first year of retail business, he already has high hopes of expanding the store to be able to offer additional merchandise. Yet, we are wondering how Peter and Enilda can fit everything into their busy schedules. They both work additional day jobs and spend a significant amount of time taking care of elderly parents. Plus, they are parents themselves of four adult children and have seven grandchildren. "We do not have a lot of free time," explains Peter, "but when we do, we enjoy spending it with our immediate family."

Immortal Toys and Collectables has already become a destination, attracting customers from all over the Milwaukee area and beyond. And not only because of the toy store's unique concept, but because of Peter's business philosophy. "I treat people with respect and do not pressure them to buy anything in my store," he says. "I want people to visit my store and experience an immediate nostalgic feeling remembering toys and toy stores of the past – a place where you can walk in and see the toys that you played with as a child, but also find modern, popular toys of today!"

Peter's business philosophy is obviously working. "At the end of the day," he says, "I don't care if someone buys something, but if they leave feeling joyful over their experience of being in my store, then I know I've done



BRIDGES

CONNECTING OUR CITY OF SOUTH MILWAUKEE COMMUNITY

ADVERTISE IN THE AUTUMN 2023 ISSUE OF BRIDGES MAGAZINE

Reserve your ad space today in the Autumn/October issue of Bridges, mailed to EVERY household and business in the City of South Milwaukee.

Bridges is the official City and South Milwaukee School District Magazine. Extra copies are distributed to local advertisers, high-traffic locations and area realtors – more than 11,000 total copies mailed and distributed!

Directly reach your target audience in South Milwaukee with the City's official magazine. No other local publication has our reach!

~

Call 414.215.7999 or email info@smbbridgesmagazine.com for more information.

BUCYRUS MUSEUM

Visit the Bucyrus Museum in the historic Bucyrus Club.

Come and explore the 130+ year story of Bucyrus, from 1880 to the modern machine times of today. From our rope shovel simulator, hands on kiosks, and machine models of every vintage, the Bucyrus Museum offers something for all ages.



Open 10 am to 3 pm – Tuesday, Thursday, and Saturday.
Available for reservations for groups and special events.

Please call 414-671-3850

during regular business hours for more information.

Bucyrus Museum

1919 12th Avenue • South Milwaukee WI, 53172

www.bucyrusmuseum.org

THANK YOU, BUCYRUS MUSEUM!

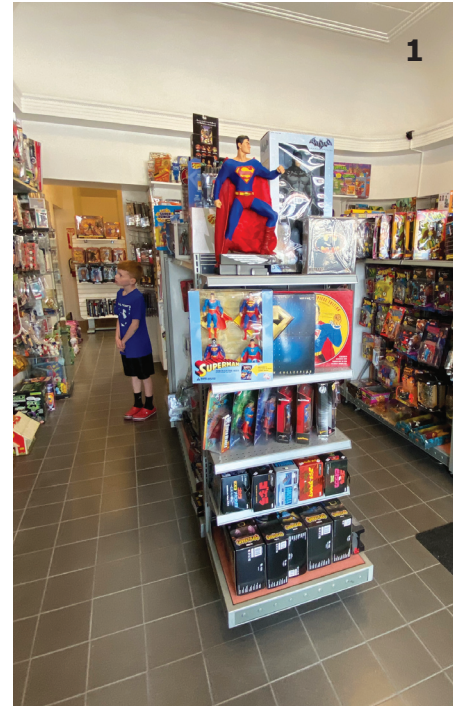
The Bucyrus Museum is a proud supporter of the Bucyrus Commons Project, South Milwaukee Community Dinner, South Milwaukee Public Library and South Milwaukee Little League.

OUT AND ABOUT IN THE CITY OF SOUTH MILWAUKEE

LET'S CELEBRATE SPRING ... AND SOON TO BE SUMMER!

Warmer weather means outdoor dining, special events, the Downtown Market, fireworks and parades, outdoor music, and so much more! Get ready for the season by reserving the dates of your favorite upcoming events as seen in our Community Calendar on pg. 39.

1. This youngster is checking out all the vintage toys at South Milwaukee's new toy shop, Immortal Toys and Collectables (see pg. 30).
2. Captain Dan Fournier from the SM Police Department shows off the T-shirt being sold to benefit the new K9 program (see pg. 24).
3. Mayor Shelenske (third from left in red shirt) helped Rebecca Garcia cut the ribbon at the grand opening of Pearl Aesthetics, 1227 Milwaukee Ave.
4. School Board members Patrick Hintz and Augie Vega were re-elected in April, and Nathan Jurowski was elected as a new member (see pg. 18).
5. The new Bucyrus Commons in Downtown South Milwaukee will host a dedication on Sunday, May 21, for the community (see pg. 22).
6. Steele Solutions will be moving its headquarters to South Milwaukee.
7. MATC baseball and softball athletes will play on a new turf this spring at the Oak Creek Campus (see pg. 20).



Water Source

South Milwaukee Water Utility is supplied by surface water from Lake Michigan.



To obtain a summary of the source water assessment please contact, Ben Huffman at 414-768-8070.

Treatment process

South Milwaukee Water Utility uses an ultra-filtration pressurized membrane system. The membrane technology provides a verifiable barrier against viruses, turbidity, suspended solids, and pathogen contamination such as cryptosporidium for the City's drinking water supply.

Educational Information

The sources of drinking water (both tap water and bottled water) include rivers, lakes, streams, ponds, reservoirs, springs, and wells. As water travels over the surface of the land or through the ground, it dissolves naturally occurring minerals and, in some cases, radioactive material, and can pick up substances resulting from the presence of animals or from human activity.

Contaminants that may be present in source water include:

- Microbial contaminants, such as viruses and bacteria, which may come from sewage treatment plants, septic systems, agricultural livestock operations, and wildlife.
- Inorganic contaminants, such as salts and metals, which can be naturally-occurring or result from urban stormwater runoff, industrial or domestic wastewater discharges, oil and gas production, mining, or farming.
- Pesticides and herbicides, which may come from a variety of sources such as agriculture, urban stormwater runoff, and residential uses.
- Organic chemical contaminants, including synthetic and volatile organic chemicals, which are by-products of industrial processes and petroleum production, and can also come from gas stations, urban stormwater runoff and septic systems.
- Radioactive contaminants, which can be naturally-occurring or be the result of oil and gas production and mining activities.

In order to ensure that tap water is safe to drink, the EPA prescribes regulations that limit the amount of certain contaminants in water provided by public water systems. FDA regulations establish limits for contaminants in bottled water, which shall provide the same protection for public health.

Health Information

Drinking water, including bottled water, may reasonably be expected to contain at least small amounts of some contaminants. The presence of contaminants does not necessarily indicate that water poses a health risk. More information about contaminants and potential health effects can be obtained by calling the Environmental Protection Agency's safe drinking water hotline (800-426-4791).

Some people may be more vulnerable to contaminants in drinking water than the general population. Immuno-compromised persons such as persons with cancer undergoing chemotherapy, persons who have undergone organ transplants, people with HIV/AIDS or other immune system disorders, some elderly, and infants can be particularly at risk from infections. These people should seek advice about drinking water from their health care providers. EPA/CDC guidelines on appropriate means to lessen the risk of infection by cryptosporidium and other microbial contaminants are available from the Environmental Protection Agency's safe drinking water hotline (800-426-4791).

Additional Health Information: Concerning Lead in our Water

The Utility is required to periodically test the drinking water in homes at 30 predetermined sites in the distribution system for lead and copper, which enters the drinking water by corrosion of home plumbing. For the last test year, 2020, and since the introduction of polyphosphates in 1994, the water supply complies with the lead and copper action levels.

If present, elevated levels of lead can cause serious health problems, especially for pregnant women and young children. Lead in drinking water is primarily from materials and components associated with service lines and home plumbing. South Milwaukee Waterworks is responsible for providing high quality drinking water, but cannot control the variety of materials used in plumbing components. When your water has been sitting for several hours, you can minimize the potential for lead exposure by flushing your tap for 30 seconds to 2 minutes before using water for drinking or cooking. If you are concerned about lead in your water, you may wish to have your water tested.

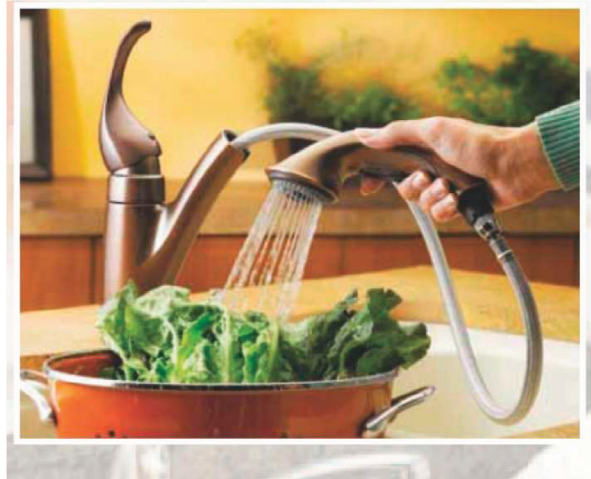
Information on lead in drinking water, testing methods, and steps you can take to minimize exposure is available from the **Safe Drinking Water Hotline (800-426-4791)** or at www.epa.gov/safewater/lead.

Other Compliance: Turbidity Monitoring

In accordance with s. NR 810.29, Wisconsin Administrative Code, the treated surface water is monitored for turbidity to confirm that the filtered water is less than 0.1 NTU/0.3NTU. Turbidity is a measure of the cloudiness of water. We monitor for it because it is a good indicator of the effectiveness of our filtration system. In 2022, the Utility's finished water turbidity meter malfunctioned and was replaced with a new unit. All finished water turbidity levels remained below 0.1 NTU. During the year, the highest single entry point turbidity measurement was 0.08 NTU.

2022 Annual Consumer Report

Quality of Tap Water



SOUTH MILWAUKEE WATER UTILITY'S DRINKING WATER MEETS OR SURPASSES ALL FEDERAL AND STATE DRINKING WATER STANDARDS

This is an annual report on the quality of water delivered by South Milwaukee Water Utility. It meets the federal Safe Drinking Water Act (SDWA) requirement for “Consumer Confidence Reports” and contains information on the source of our water, its constituents, and the health risks associated with any contaminants. Safe water is vital to our community.

Providing this annual water quality report to our customers is an important part of our ongoing water quality efforts. If you have any questions about the Utility or this report, please call the Utility office at (414) 768-8070 or visit our web site at: www.smwi.org. Regular monthly meetings of the Water/Wastewater Commission also provide opportunities for public participation and additional information. These meetings are scheduled on the second Monday of the month at 6:00 pm at the Water Utility (100 Marshall Ave).

Ben Huffman, Superintendent
South Milwaukee Water Utility

Este informe contiene información importante acerca de su agua potable. Haga que alguien lo traduzca para usted, o hable con alguien que lo entienda.

Dlaim ntawv tshaabzu nuav muaj lug tseemceeb heev nyob rua huv kws has txug cov dlej mej haus. Kuas ib tug paab txhais rua koj, los nrug ib tug kws paub lug thaam.

Detected Contaminants: Your water was tested for many contaminants last year. We are allowed to monitor for some contaminants less frequently than once a year. The following tables list only those contaminants which were detected in your water. If a contaminant was detected last year, it will appear in the following tables without a sample date. If the contaminant was not monitored last year, but was detected within the last 5 years, it will appear in the tables below along with the sample date.

NOTE: Not listed are other compounds for which the water was tested but undetected. This information is available upon request at the Utility office. South Milwaukee Water Utility did not test for radon in 2022. South Milwaukee Water Utility did not test for cryptosporidium in 2022.

Contaminant (units)	Site	MCL	MCLG	Level Found	Range	Sample Date (if prior to 2022)	Violation	Typical Source of Contaminant
Disinfection Byproducts								
HAA5 (ppb)	304	60	60	14	10 – 17		No	By-product of drinking water chlorination
TTHM (ppb)	304	80	0	30.6	16.4 – 43.8		No	By-product of drinking water chlorination
HAA5 (ppb)	307	60	60	21	15 – 29		No	By-product of drinking water chlorination
TTHM (ppb)	307	80	0	39.7	21.8 – 60.5		No	By-product of drinking water chlorination
HAA5 (ppb)	402	60	60	17	13 – 18		No	By-product of drinking water chlorination
TTHM (ppb)	402	80	0	33.6	21.4 – 52.2		No	By-product of drinking water chlorination
HAA5 (ppb)	407	60	60	19	12 – 24		No	By-product of drinking water chlorination
TTHM (ppb)	407	80	0	37.7	18.7 – 64.0		No	By-product of drinking water chlorination
Presence of Other Contaminants								
Bromodichloromethane (ug/L)	80			8.2				
Bromoform (ug/L)	80			0.19				
Chloroform (ug/L)	80			11.0				
Dibromochloromethane (ug/L)	80			3.8				
Inorganic Contaminants								
ARSENIC	10	n/a		0.68	0.68	3/1/2021	No	Erosion of natural deposits; Runoff from orchards; Runoff
BARIUM (ppm)	2	2		0.022	0.022		No	Discharge of drilling wastes; Discharge from metal refineries; Erosion of natural deposits
COPPER (ppm)	AL=1.3	1.3		0.210	0 of 30 + action level	9/17/2020	No	Corrosion of household plumbing; Erosion of natural deposits; Leaching from wood preservatives
FLUORIDE (ppm)	4	4		0.5	0.5		No	Erosion of natural deposits; Water additive which promotes strong teeth; Discharge from fertilizer and aluminum factories
LEAD (ppb)	AL=15	0		5.70	0 of 30 + action level	9/17/2020	No	Corrosion of household plumbing systems; Erosion of natural deposits
NICKEL (ppb)	100			0.63	0.63	3/1/2021	No	Nickel occurs naturally in soils, ground water and surface waters, and is often used in electroplating stainless steel and alloy products
SODIUM (ppm)	n/a	n/a		17.0	17.0		No	n/a
NITRATE (N03-N) (ppm)	10	10		0.46	0.46		No	Runoff from fertilizer use; Leaching from septic tanks, sewage; Erosion of natural deposits
Synthetic Organic Contaminants including Pesticides and Herbicides								
Atrazine (ppb)	3	3		0.0		7/20/2020	No	Runoff from herbicide
Hexachlorocyclopentadiene (ppb)	50	50		0.0		4/13/2020	No	Discharge from chemical factories
Radioactive Contaminants								
COMBINED URANIUM (ppb)	30	0		0.8	0.8	4/13/2020	No	Erosion of natural deposits
GROSS Alpha, Excl. R&U (pCi/l)	15	0		1.0	1.0	4/13/2020	No	Erosion of natural deposits
Unregulated Contaminants: Unregulated contaminants are those for which EPA has not established drinking water standards. The purpose of unregulated contaminant monitoring is to assist EPA in determining the occurrence of unregulated contaminants in drinking water and whether future regulation is warranted. EPA requires us to participate in this monitoring.								
Metolachlor (Dual) (ppm)	n/a	n/a		0.02	0.01 – 0.02	7/20/2020		
Bromochloroacetic acid (ppm)	n/a	n/a		4.0	3.4 – 4.5	2/19/2019		
Bromodichloroacetic acid (ppm)	n/a	n/a		5.9	5.3 – 6.4	2/19/2019		
Chlorodibromoacetic acid (ppm)	n/a	n/a		1.42	1.3 – 1.5	2/19/2019		
Monobromoacetic acid (ppm)	n/a	n/a		0.59	0.48 – 0.65	2/19/2019		
Dibromoacetic acid (ppm)	n/a	n/a		0.81	0.66 – 0.88	2/19/2019		
Dichloroacetic acid (ppm)	n/a	n/a		8.45	7.2 – 9.6	2/19/2019		
Bromochloroacetic acid (ppm)	n/a	n/a		7.43	6.6 – 8.3	2/19/2019		

Definition of Terms

AL: Action Level: The concentration of a contaminant which, if exceeded, triggers treatment or other requirements which a water system must follow.

HA and HAL: HA: Health Advisory. An estimate of acceptable drinking water levels for a chemical substance based on health effects information. HAL: Health Advisory Level is a concentration of a contaminant which, if exceeded, poses a health risk and may require a system to post a public notice. Health Advisories are determined by US EPA.

HI: Hazard Index: A Hazard Index is used to assess the potential health impacts associated with mixtures of contaminants. Hazard Index guidance for a class of contaminants or mixture of contaminants may be determined by the US EPA or Wisconsin Department of Health Services. If a Health Index is exceeded a system may be required to post a public notice.

Level 1 Assessment: A study of the water system to identify potential problems and determine, if possible, why total coliform bacteria have been found in our water system.

Level 2 Assessment: A very detailed study of the water system to identify potential problems and determine, if possible, why an E. coli MCL violation has occurred or why total coliform bacteria have been found in our water system, or both, on multiple occasions.

MCL: Maximum Contaminant Level: The highest level of a contaminant that is allowed in drinking water. MCLs are set as close to the MCLGs as feasible using the best available treatment technology.

MCLG: Maximum Contaminant Level Goal: The level of a contaminant in drinking water below which there is no known or expected risk to health. MCLGs allow for a margin of safety.

MFL: Million fibers per liter

MRDL: Maximum Residual Disinfectant Level: The highest level of a disinfectant allowed in drinking water. There is convincing evidence that addition of a disinfectant is necessary for control of microbial contaminants.

MRDLG: Maximum Residual Disinfectant Level Goal: The level of a drinking water disinfectant below which there is no known or expected risk to health. MRDLGs do not reflect the benefits of the use of disinfectants to control microbial contaminants.

mrem/year: Millirems per year: (a measure of radiation absorbed by the body)

NTU: Nephelometric Turbidity Units

pCi/l: Picocuries per liter (a measure of radioactivity)

ppm: Parts per million, or milligrams per liter (mg/l)

ppb: Parts per billion, or micrograms per liter (ug/l)

ppt: Parts per trillion, or nanograms per liter

ppq: Parts per quadrillion, or picograms per liter

PHGS: Public Health Groundwater Standards are found in NR 140 Groundwater Quality. The concentration of a contaminant which, if exceeded, poses a health risk and may require a system to post a public notice.

RPHGS: Recommended Public Health Groundwater Standards: Groundwater standards proposed by the Wisconsin Department of Health Services. The concentration of a contaminant which, if exceeded, poses a health risk and may require a system to post a public notice.

SMCL: Secondary Maximum Contaminant Levels: Secondary drinking water standards for contaminants that affect taste, odor, or appearance of the drinking water. The SMCLs do not represent health standards.

TCR: Total Coliform Rule

TT: Treatment Technique: A required process intended to reduce the level of a contaminant in drinking water.

Contaminants with a Public Health Groundwater Standard, Health Advisory Level, or a Secondary Maximum Contaminant Level The following table lists contaminants which were detected in your water and that have either a Public Health Groundwater Standard (PHGS), Health Advisory Level (HAL), or a Secondary Maximum Contaminant Level (SMCL), or both. There are no violations for detections of contaminants that exceed Health Advisory Levels, Public Health Groundwater Standards or Secondary Maximum Contaminant Levels. Secondary Maximum Contaminant Levels are levels that do not present health concerns but may pose aesthetic problems such as objectionable taste, odor, or color. Public Health Groundwater Standards and Health Advisory Levels are levels at which concentrations of the contaminant present a health risk.

Contaminant (units)	SMCL (ppm)	PHGS or HAL	Level Found	Range	Sample Date (if prior to 2022)	Violation	Typical Source of Contaminant
Sulphate (ppm)	250	n/a	23.0	23.0		No	Runoff/leaching from natural deposits, industrial wastes

COMMUNITY CALENDAR

Special events and activities are subject to change.
Please call ahead or visit digital platforms to confirm dates and times.

MAY

- **Sun., May 21: Afternoon at the Bucyrus Commons-Grand Opening, 1-5 p.m.** See pg. 22.
- **Wed., May 24: Senior Honors Awards Night, 6:30-8:30 p.m.** at South Milwaukee High School
- **Fri., May 26: No School, Professional Development**
- **Mon., May 29: Memorial Day, City Offices Closed**
- **Mon., May 29: Memorial Day, No School**
- **Wed., May 31: South Milwaukee Performing Arts Center 2023-2024 Season Preview, 6:30 p.m.**

JUNE

- **Thur., June 1: First Day of the Downtown Market, 3-7 p.m.** at the new Bucyrus Commons, 11th and Madison Aves. (every Thursday through Oct. 5).
- **Thur., June 1: Reverend Raven & the Chain Smokin' Altar Boys, 5-7 p.m.** at the Downtown Market, sponsored by South Milwaukee Performing Arts Center.
- **Sat.-Sun., June 3-4: Crusherfest** Join in this fun community celebration featuring music, wrestling, food, and more. See pg. 23.
- **Sun., June 4: The Squeezettes, 12-3 p.m.** at Crusherfest in Downtown SM, Sponsored by SMPAC.
- **Mon., June 5: Rec. Dept. Summer Exercise Classes Begin**
- **Thur., June 8: Last Day of School Early Release** MS/HS 11:55 a.m. release, Elementary School 11:45 a.m. release
- **Thur., June 8: Class of 2023 Commencement Ceremony, 7-9 p.m.** at South Milwaukee High School
- **Thur., June 8: Dog House Charlie, 5-7 p.m.** at the SM Downtown Market, sponsored by SM Performing Arts Center.
- **Tue., June 20: First Day of Summer School**
- **Thur., June 22: The Kal Bergendahl Project, 5-7 p.m.** at the Downtown Market, sponsored by South Milwaukee Performing Arts Center.

JULY

- **Sat., July 1: Fall 2023 High School Sports Registration Begins** Check website for details: sdsm.k12.wi.us.
- **Mon.-Tue., July 3-4: No Summer School**
- **Tue., July 4: Independence Day, City offices closed**
- **Tue., July 4: City's Independence Day Celebration** (plans are in the works, watch for details soon).
- **Mon., July 10: Returning Students School Enrollment Annual Update begins.**
- **Sat., July 15: SMPAC Youth Theatre presents "Peter Pan Jr." (cast ages 6-11)**

- **Mon., July 24: DARE Golf Outing, Grant Park Golf Course, 8 a.m.,** registration form can be found at bit.ly/SMdareGolfReg23
- **Fri., July 28: Last Day of Summer School**
- **Fri.-Sun., July 28-30: SMPAC Youth Theatre presents Disney's "Little Mermaid Jr." (cast ages 12-18)**
- **Sat., July 29: Heritage Days, with a parade and much more!** Visit smheritagedays.org for information.
- **Sat., July 29: Sweet Sheiks at South Milwaukee Lionsfest, 12-3 p.m.,** sponsored by South Milwaukee Performing Arts Center.
- **Mon., July 31: Rec. Dept. Exercise Class Registration Begins**

AUGUST

- **Tue., Aug. 1: Fall Sports Begin**
- **Thur., Aug. 3: Community Night Out, City Hall, 2424 15th Ave.** (plans being finalized, watch for information soon).
- **Sat., Aug. 26: Cheaterama at Bucyrus Commons**
- **Mon., Aug. 28: Rec. Dept. Fall Exercise Classes Begin**
- **Tue., Aug. 29: HS/MS Open House, 5-7 p.m.**
- **Wed., Aug. 30: Elementary Open House, 5-7 p.m.**

SEPTEMBER

- **Mon., Sept. 4: Labor Day, City Offices Closed**
- **Tue., Sept. 5: First Day of School**
- **Wed., Sept. 13: Half Day of School, MS/HS 11:55 a.m. release, Elementary School 11:45 a.m. release.**
- **Sat., Sept. 16: Human Concerns 50th Anniversary Celebration** (see pg. 31)
- **Thur., Sept. 21: South Milwaukee Performing Arts Series Season Opener.** Visit the southmilwaukeekeepac.org after May 31 for the full season schedule.
- **Fri., Sept. 22: Homecoming Football Game**

OCTOBER

- **Wed., Oct. 4: Half Day of School, MS/HS 11:55 a.m. release, Elementary School 11:45 a.m. release**
- **Mon., Oct. 9: No School, Professional Development**
- **Wed., Oct. 18: Parent/Teacher Conferences**
- **Wed., Oct. 18: South Milwaukee Performing Arts Series Show** Visit southmilwaukeekeepac.org for details after May 31.
- **Thur., Oct. 19: Parent/Teacher Conferences**
- **Fri., Oct. 20: No School**
- **Sat., Oct. 28: Trick or Treat, 5-7 p.m.**

2022 South Milwaukee Water Utility Boil Water Advisory

On June 13, 2022, a severe thunderstorm passed through the City of South Milwaukee with winds exceeding 60 mph, hail, and lighting. This led to significant tree damage and property damage, causing widespread power outages to approximately 45,000 households in Southeastern WI. This storm did extensive damage to the Water Utility's ability to pump drinking water to the distribution system. Crews worked around the clock for several nights to repair the damaged equipment. Unfortunately, a series of equipment failures occurred on the morning of Sunday, June 19th. These failures resulted in a system-wide pressure loss of greater than 25%. This pressure loss required the Utility to notify the Wisconsin Department of Natural Resources which subsequently issued a "boil advisory." During this time, the City of South Milwaukee was partially supplied with water from the Oak Creek Water Utility for approximately 16 hours.

One of the requirements to lift the boil advisory was to conduct additional bacteriological testing. During the initial round of testing, one of the samples was collected incorrectly. This resulted in a positive result. This positive result was followed up with two additional samples collected from the same location, which were both negative for bacteria. A total of 24 additional samples were collected over a two-day period, all of which were negative.

Lead Service Line inventory

The South Milwaukee Water Utility is working on completing an inventory of the lead water service lines in the city. The EPA is requiring this inventory be completed by October of 2024. If our records are incomplete regarding your property, you may receive a knock on your door by one of our servicemen, or a notice left if you weren't available. Our workers will have identification clearly visible. However, if you do not feel comfortable letting them in if they come to your home, feel free to call the Water Utility to set up an appointment after receiving the notice on your door.

Lead Service Line Replacements

The South Milwaukee Water Utility has submitted an Intent to Apply for State of Wisconsin Safe Drinking Water Loan Program for Lead Service Line Replacements for State fiscal year 2024. The completed application is due at the end of June. After the application is submitted, the state will evaluate the applications and will provide detailed funding information to the Utility. Once this information is provided, the Utility will be drafting a lead service replacement plan.

Financial Assistance Program

Customers having difficulty paying their water/sewer bills may be eligible for assistance through the following state programs:

WI Help for Homeowners: 1-855-246-6394

Low Income Household Water Assistance Program: 1-833-426-9472

For links to these programs' websites and for other useful information, visit the Water Utility's department page on the city's website: www.smwi.org



The City of South Milwaukee
 2424 15th Avenue
 South Milwaukee, WI 53172

PRSR STD
 U.S. Postage
PAID
 Milwaukee, WI
 Permit No. ????

South Milwaukee
 Welcomes the New Spring Season
 with **BRIDGES Magazine!**




FREE online classes from your public library!
All you need is a library card.



- Career Development
- Job Search Skills
- Computer Skills
- World Languages
- Hobbies / Special Interests
- Tutoring and Test Prep
- Personal Finances / Investing
- Improve Your English

Need a library card? Scan here to sign up online!

www.LevelUpLearning.info

South Milwaukee Public Library

- Free notary service for South Milwaukee residents.
- Remote printing: send from anywhere, pick up your prints at the library.
- Fun community programming for all ages.

1907 10th Ave • 414-768-8195
www.smlibrary.org

Take a virtual tour of the library!

