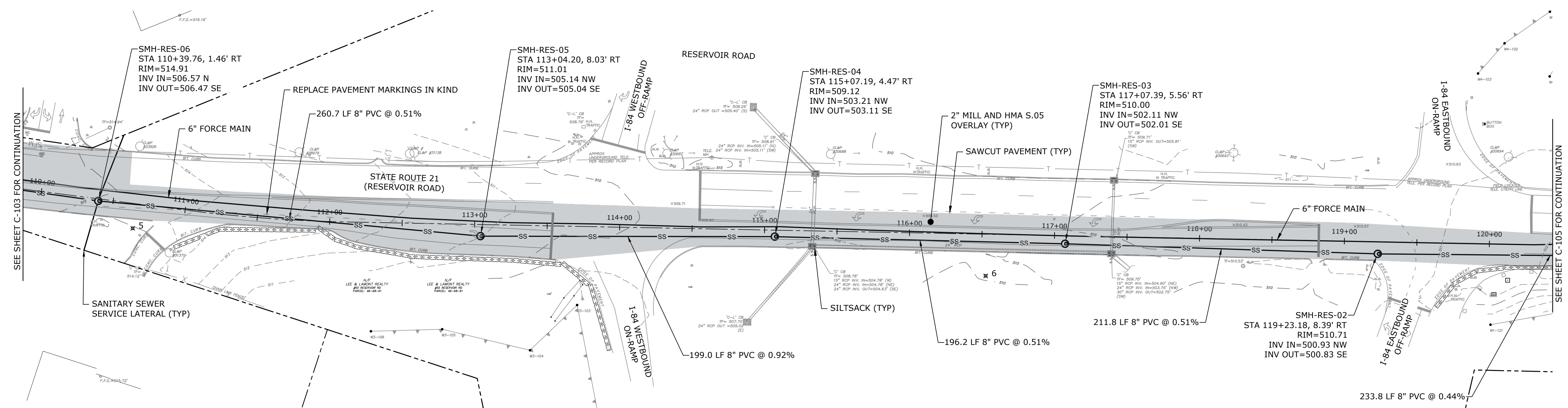




**FOR BIDDING**

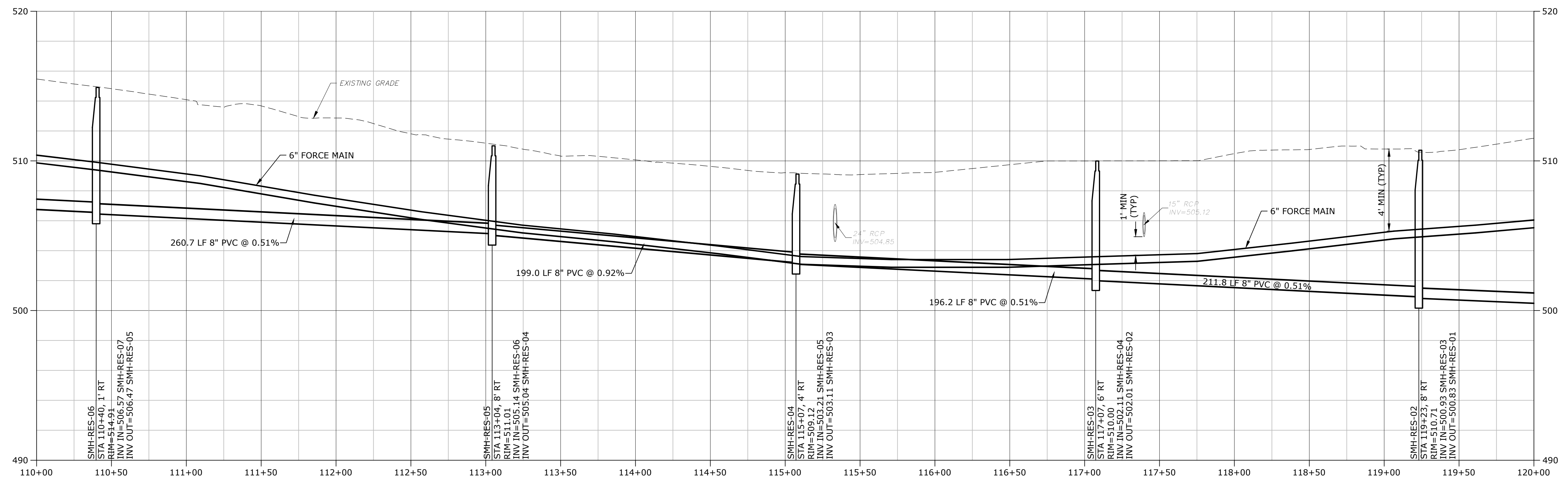
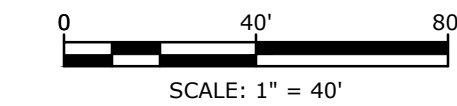


CONTROL POINTS/BENCHMARKS				
POINT NUMBER	DESCRIPTION	NORTHING	EASTING	ELEV.
5	SPIKE	N 872,817.00	E 1,087,070.85	514.92
6	SPIKE	N 872,283.88	E 1,087,321.72	510.03

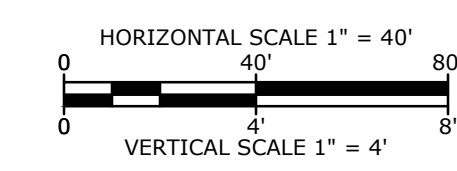
**PLAN VIEW - RESERVOIR ROAD 2**  
SCALE: 1" = 40'

**LEGEND:**

- 2" MILL AND HMA S0.5 OVERLAY (STATE ROAD)
- FULL WIDTH 2" MILL AND HMA S0.5 OVERLAY (TOWN ROAD)



**PROFILE VIEW - RESERVOIR ROAD 2**  
SCALE: HOR: 1" = 40' VERT: 1" = 4'



**Town Of  
Vernon**

**Exit 67 Sewer  
Extension**

Vernon, CT

PROJECT NO:	V0037-017
DATE:	JANUARY 2024
FILE:	V0037-017-C-100-PLNPR.dwg
DRAWN BY:	RRB
DESIGNED/CHECKED BY:	LAC
APPROVED BY:	MM

**SANITARY SEWER  
PLAN & PROFILE  
RESERVOIR ROAD - 2**

SCALE: AS SHOWN

Last Saved: 1/16/2024 1:58pm By: SrisoneM  
 Plotted On: Jan 16, 2024 1:58pm By: SrisoneM  
 Tighe & Bond: J:\V0037-Vernon\WIP\017 - Exit 67 Sewer Extension Design\Drawings\AutoCAD\Sheet\0037-017-C-100-PLNPR.dwg