

**FOR BIDDING**

**Town Of  
Vernon**

**Exit 67 Sewer  
Extension**

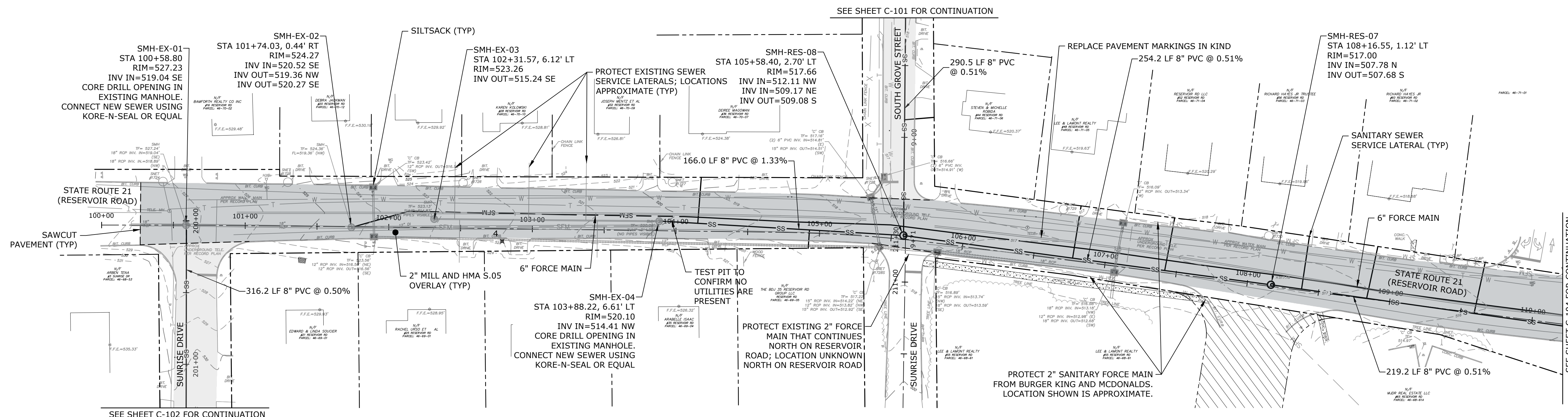
Vernon, CT

PROJECT NO:	V0037-017
DATE:	JANUARY 2024
FILE:	V0037-017-C-100-PLNPR.dwg
DRAWN BY:	RRB
DESIGNED/CHECKED BY:	LAC
APPROVED BY:	MM

**SANITARY SEWER  
PLAN & PROFILE  
RESERVOIR ROAD - 1**

SCALE: AS SHOWN

**C-103**

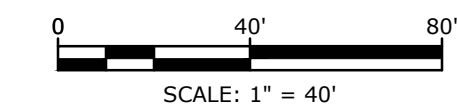


**PLAN VIEW - RESERVOIR ROAD 1**

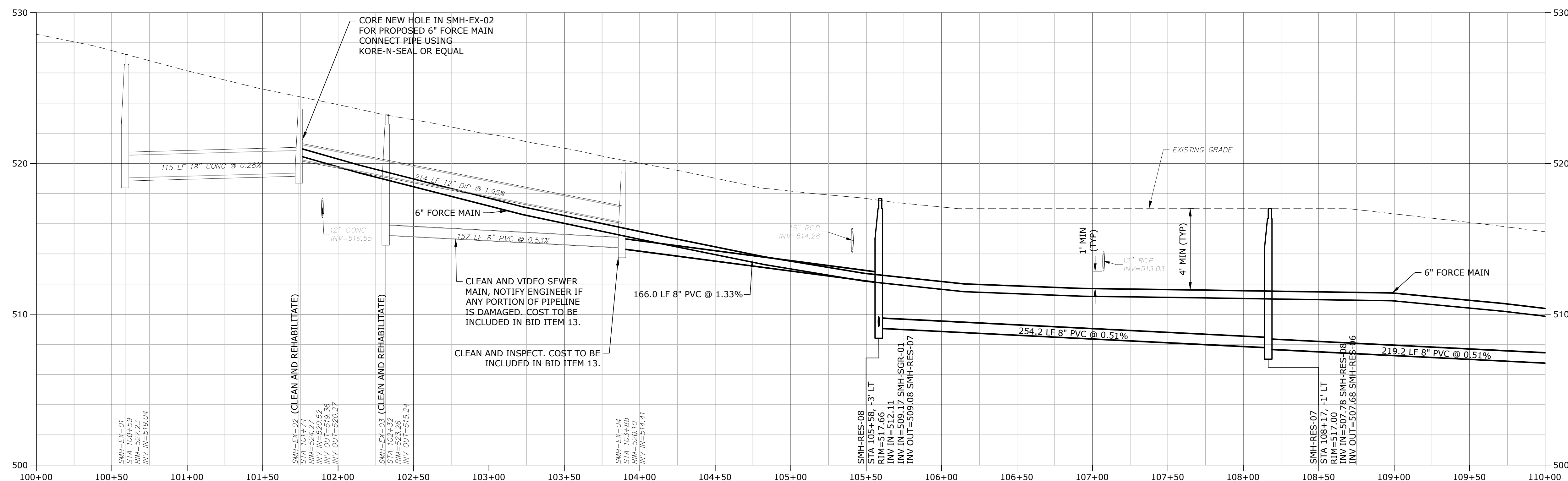
SCALE: 1" = 40'

**LEGEND:**

- 2" MILL AND HMA S0.5 OVERLAY (STATE ROAD)
- FULL WIDTH 2" MILL AND HMA S0.5 OVERLAY (TOWN ROAD)

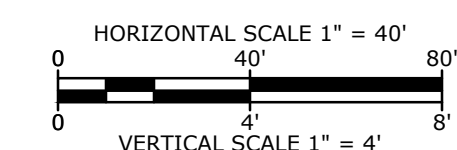


CONTROL POINTS/BENCHMARKS				
POINT NUMBER	DESCRIPTION	NORTHING	EASTING	ELEV:
4	SPIKE	N 873,541.60	E 1,086,770.58	522.47



**PROFILE VIEW - RESERVOIR ROAD 1**

SCALE: HOR: 1" = 40' VERT: 1" = 4'



Last Saved: 1/16/2024 1:58pm By: SrisonehM  
 Plotted On: Jan 16, 2024 1:58pm By: SrisonehM  
 Tighe & Bond: J:\V0037-Vernon-WWP\017-Exit 67 Sewer Extension-Design\Drawings\AutoCAD\Sheet\0037-017-C-100-PLNPR.dwg