

Elementary Academy

Detroit Edison Public School Academy



Student and Parent Newsletter Monday, June 17– June 20, 2024 Quarter 4 Week 44

Elementary Academy Pioneers Level Up

Elementary Principal, Dr. Peart

kpeart@npfeschools.org

(313) 833-1100, Ext. 1141

Door opens at 7:50 AM for K-8

Tardy after 8:05 AM

Dismissal is at 3:35 PM for K-8

School Theme: Level UP

What It Means to Level Up

- L** - Learn from mistakes
- E** - Effort increases to push forward
- V** - Vary strategies to succeed
- E** - Earn new knowledge at each level
- L** - Let go of a fixed mindset

U - Use hints, tools, and resources to overcome obstacles

P - Persevere to keep leveling up

Important Dates & Information:

- June 18, 2024** 5th Grade Gathering
- June 20, 2024**– 5th grade Promotion Ceremony 8:30 AM
Semi formal attire; Please have students arrive to school at 7:50 AM.
- June 20, 2024** ½ day Field Day last day of school for students

Cell phone collection

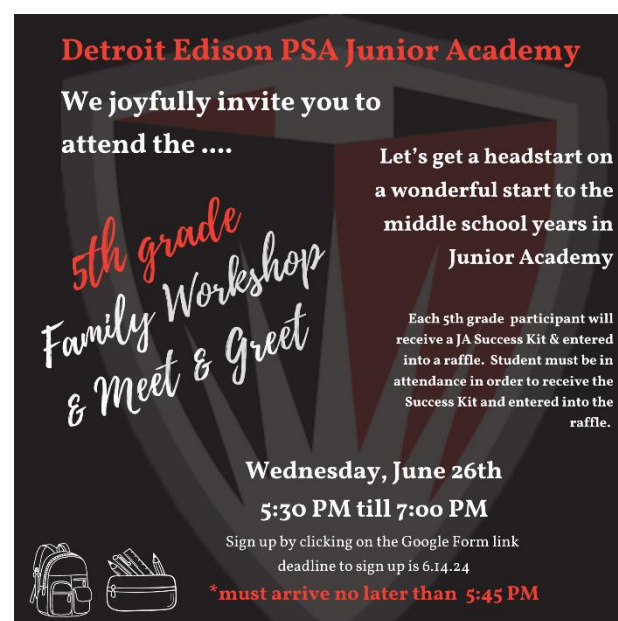
Cell will be collected during first period and returned during last period. If you need to contact your child, please contact the school.

5th grade Promotion

Heregy heregy 5th grade lock-in and promotional ceremony will be approaching soon. Please calendar the important dates below. More information is forth coming.

- 5th grade promotion ceremony will be held on June 20, 2023 at 8:30 AM
Students will be given 2 tickets per household. Students should arrive to school at 7:50 AM in semi formal attire.

Join Ms. Collins, JA Principal for the 5th Grade Family Workshop and Meet and Greet



ACTION REQUESTED: Parents as Partners, Your Voice Matters, Please complete the survey:

We need your help to make our school even more amazing! We're excited to invite you to participate in our school survey - your chance to have a say in shaping the future of our academic learning environment. We want to hear about your experiences, ideas, and what you think could make our school even better. Your feedback will guide us in creating positive changes that benefit everyone. Please complete the survey by Friday, June 14, 2024 using the following link:

<https://eprovesurveys.advanc-ed.org/surveys/#/action/256759/p58143>

By completing the survey your child will be able to enter a raffle for a prize. You will need to provide a pic of the page once you have completed the survey.

ACTION REQUESTED: 5th Grade Parents Only please complete the Lock In Survey-

Your voice and recommendations matter to us. If your child attended our annual 5th grade lockin please complete the survey below. Thank you to our parent volunteers who supported us at the Lockin, much appreciated!!

https://docs.google.com/forms/d/e/1FAIpQLSdJLAvf-SvQg_5RIQzJR4AdodOpHdhw2duoYwIjLm9s7DseUA/viewform?ts=66324617&edit_requested=true

Thank you for your support of NPFE schools!

School wide Cooperative Challenge for the week

Use a Peace Path

This week our school-wide cooperative challenge is to use the Peace Path. The Peace Path helps us solve conflicts peacefully by using our words. Locate the Peace Path Poster in your classroom today.

End of Year Testing

Shout out to the following classes who met the goal that 65% or more of our students will meet their NWEA GOALS fall to spring targets in both reading and math:

Reading: Eligado, Rodolfo, Szumski, Bartolome, Lockard, Mora, Naidoo, Angle, Mathis, Reyes

Math: Eligado, Rodolfo, Szumski, Bartolome, Lockard, Mora, Naidoo, Angle, Reyes

Academics and Safety

As the school year is winding down we must finish strong. Parents and Guardians please speak with your child about meeting school expectations. We take academics and safety seriously. Students are expected to come to school prepared, focused, and ready to learn. Student must keep their hands to themselves and threats of any kind will not be tolerated. School personnel will enforce the code of conduct

Please check Deanslist weekly to monitor your child's progress within their classes.. Families remind students that they are required to meet the behavioral expectations of DEPSA.

Attendance Notice: DON'T GET TO 15 ABSENCES

The number of chronically absent students is alarming. Currently 33% of students are identified as Chronically Absent. Your child can be retained for poor attendance. Chronic absenteeism can cause poor grades and is defined as missing at least 10 percent (18 days) of days in a school year for any reason, including excused and unexcused absences.

Thank you families for sending your child to school and communicating with staff regarding your child's absence. Please note that an excused absence counts towards your child being chronically absent. You must send your child to school or your child could possibly be retained.

If you need support please contact Ms. Bowie, Student Support Specialist at tbowie@npfeschools.org.

SEND YOUR CHILD TO SCHOOL DAILY!

