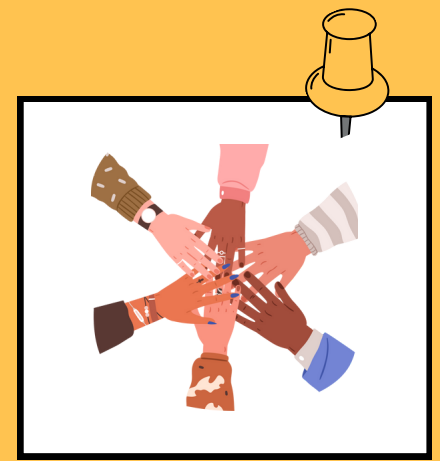


BEIRIGER ELEMENTARY SCHOOL

Multi-Tiered System of Support



In order to reach more students in a collaborative manner, Beiriger staff has combined efforts to provide a cohesive system of support for our students. MTSS allows us to view the whole student without regard to academic, social emotional, or behavioral ability. With supportive services in place, we will be able to successfully address the needs of students that require services such as: RTI, Title I, High Ability, Special Education, 504 Plan, ELL, Mental Health or other services. The team will render services to All Students, with One System of Continuum of Support. This support system works as it has administrative leadership, an integrated educational framework, family and community engagement, and an inclusive policy structure and practice.

Each team member offers unique skills and talents to best meet the needs of all learners. The MTSS members are as follows:

Tiffany Borman, General Education Teacher
Ambre Cain, Principal
Laurie Cain, Library Assistant
Deb Carver, Assistant Principal
Stephanie Cortez, Special Education Paraprofessional
Kylie Duhamell, Special Education Teacher
Bonnie Griffee, Curriculum & Technology Coach
Amanda Hudson, School Psychologist
Mike Kepchur, Behavioral Analyst
Elizabeth Lovasko, Speech Language Pathologist
Amanda Madison, Therapeutic and Intense Teacher
Celia Padilla, Case Manger
Melissa Pride, Counselor
Helen Riccio, Registered Nurse
Tracie Rivera, Special Education Paraprofessional
Amy Scheeringa, English Language Learner Teacher
Tessa Trueblood, General Education Teacher

