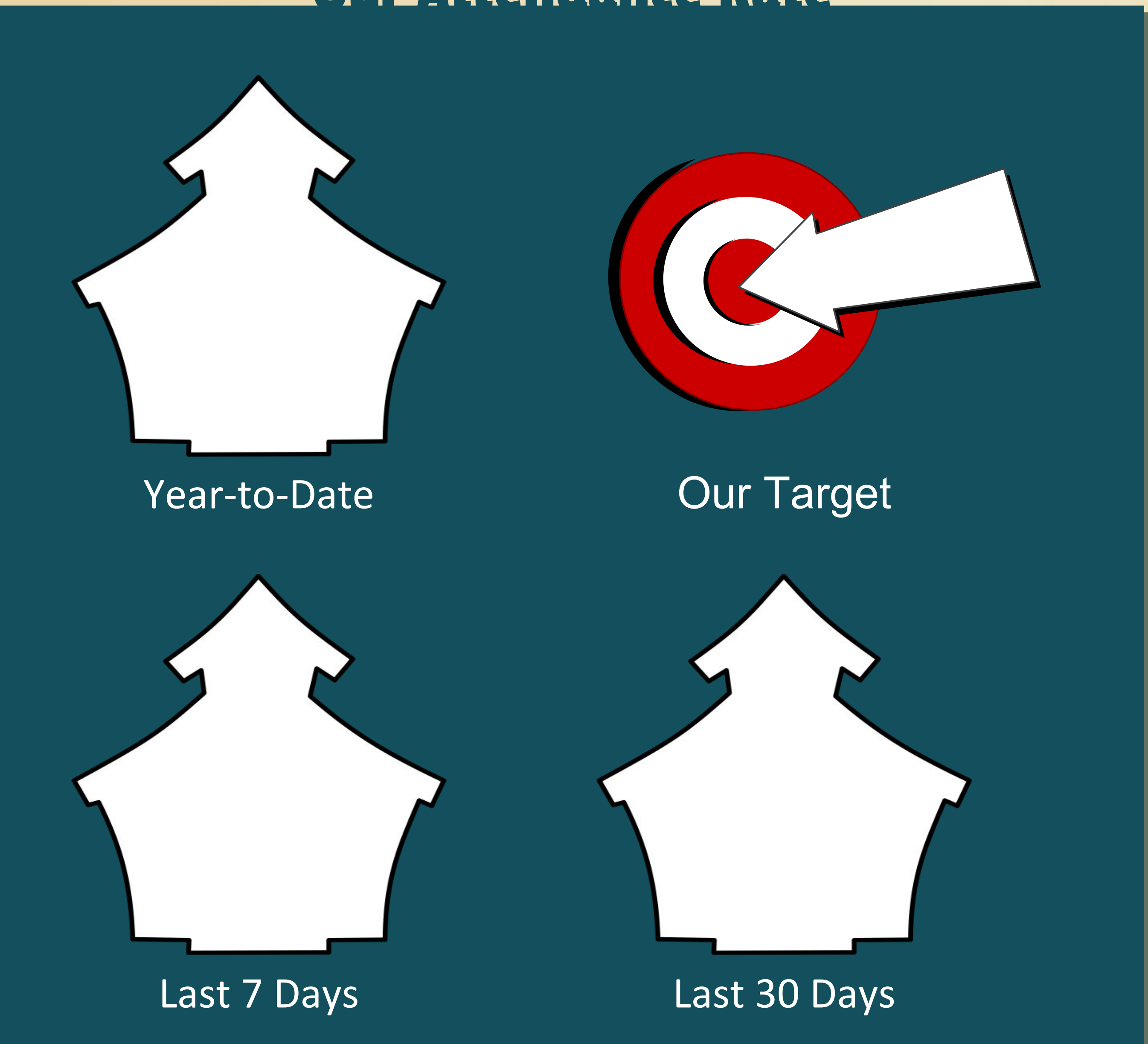


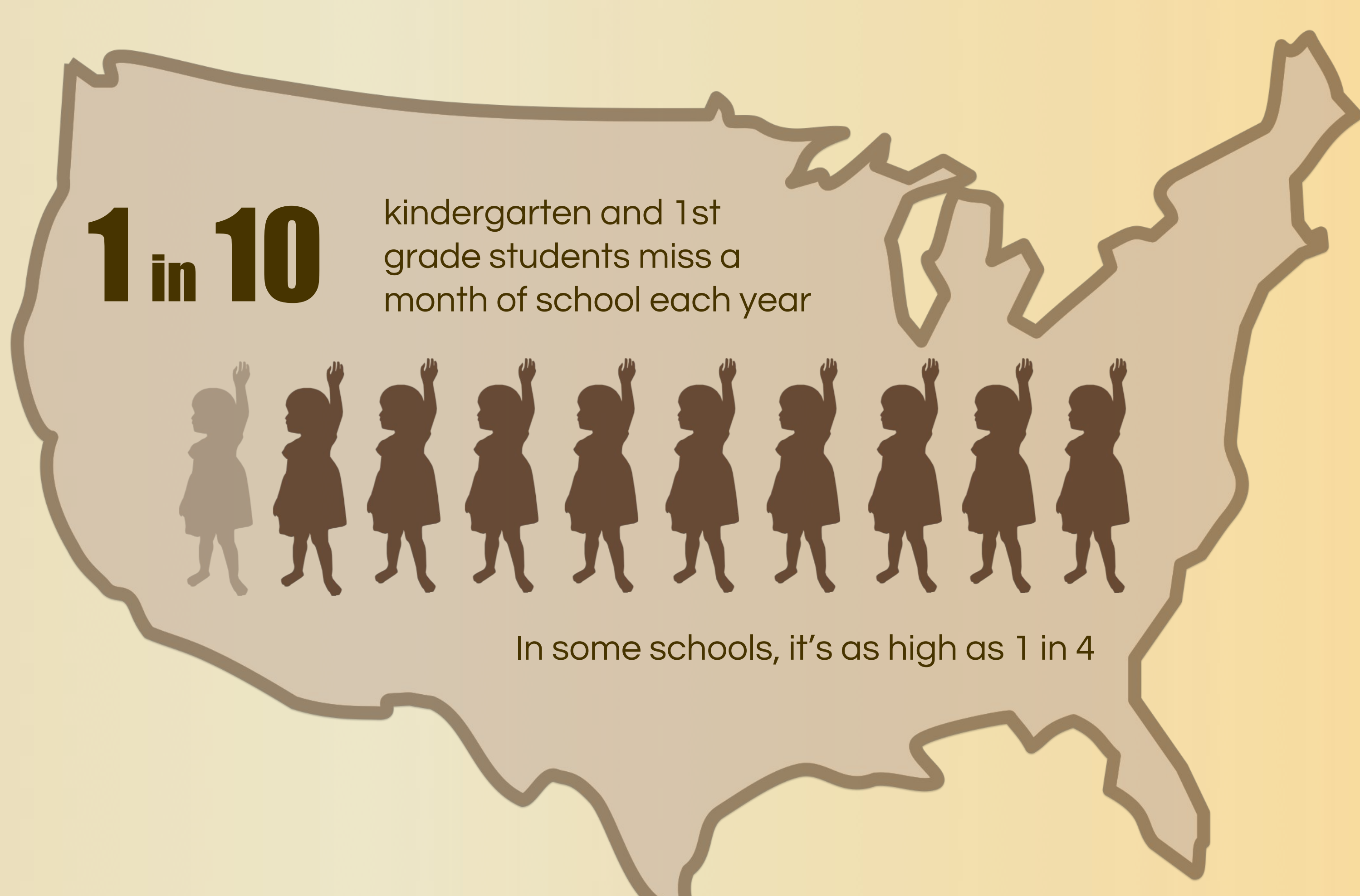
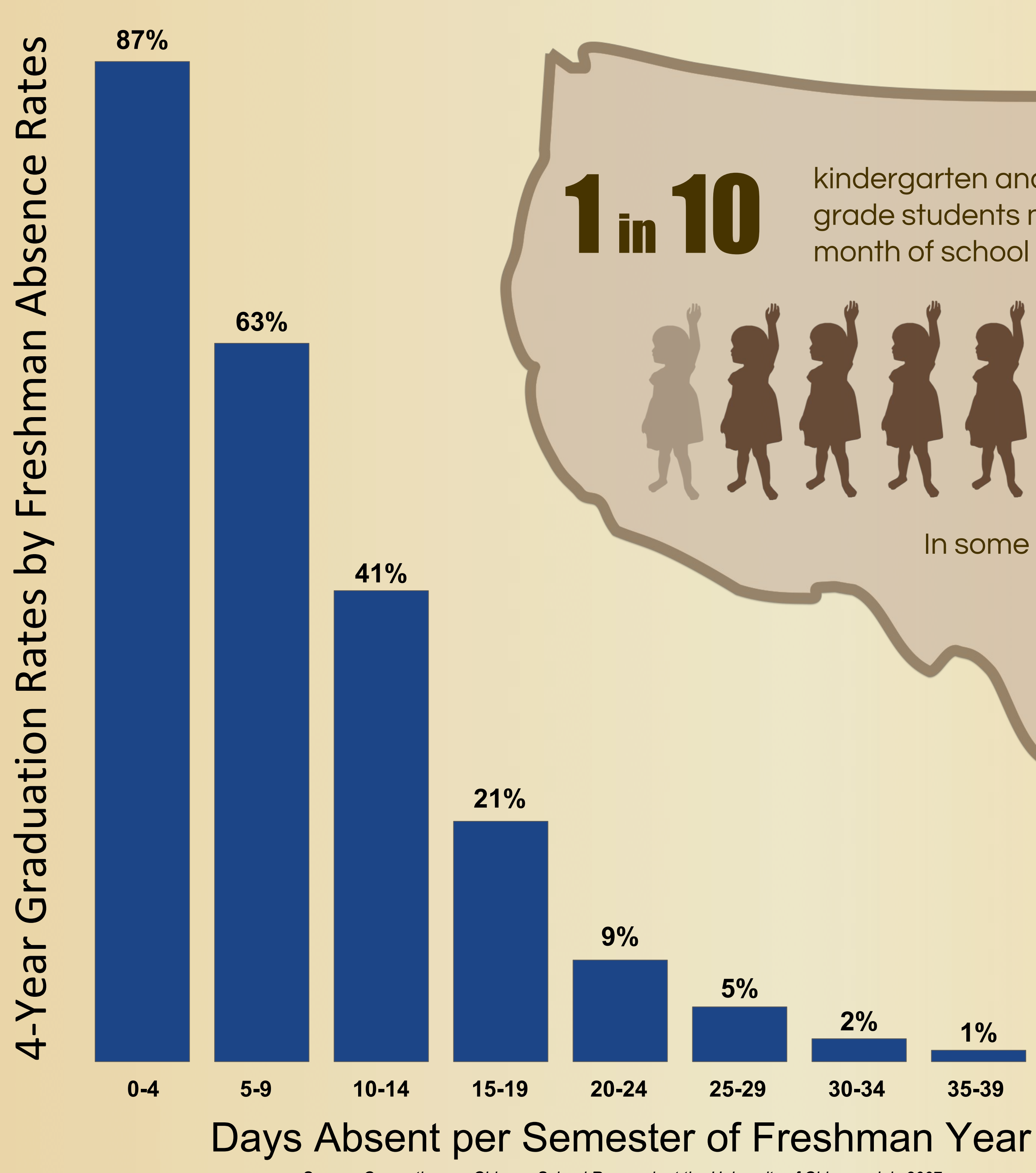
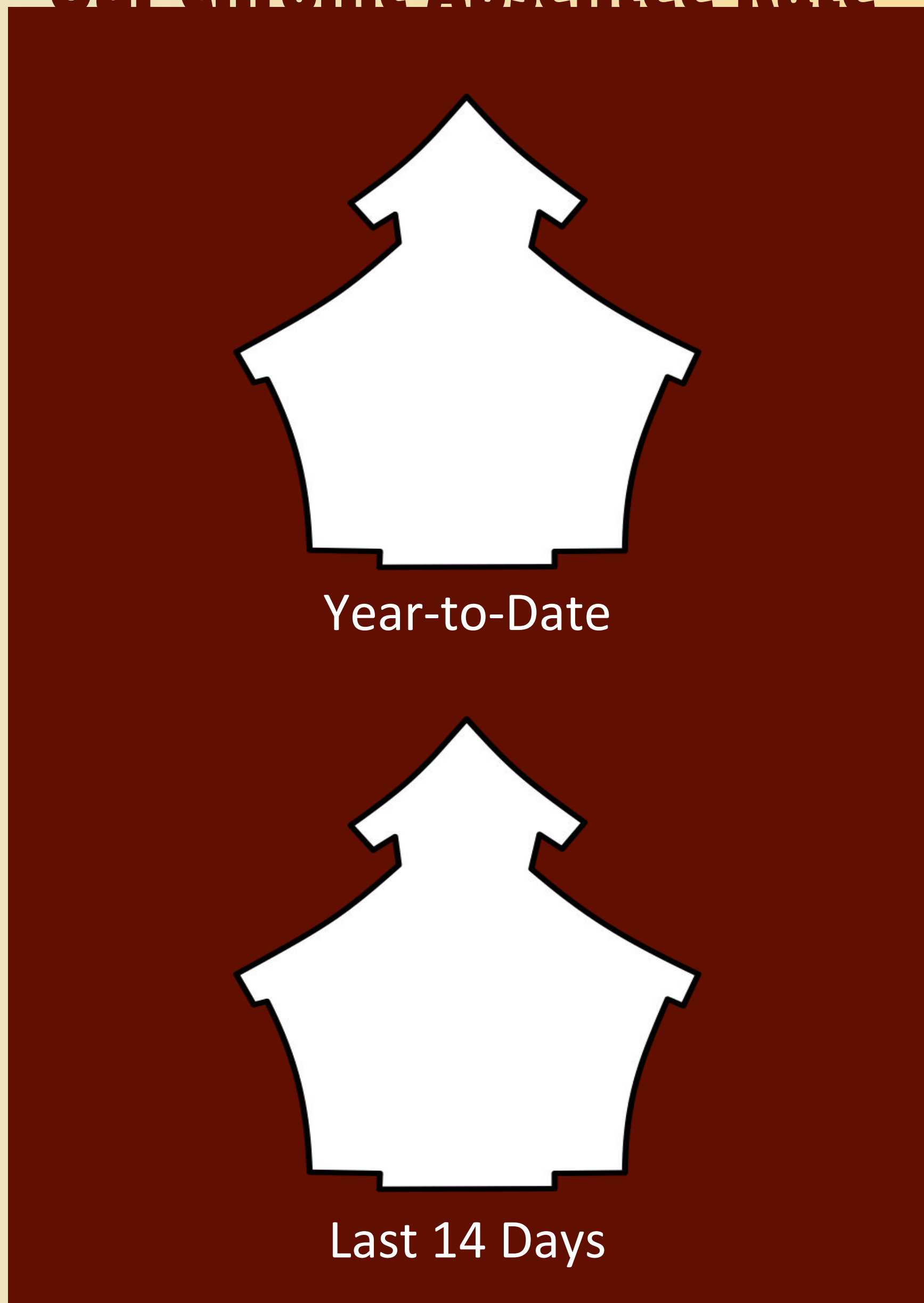
ATTENDANCE MATTERS

at Inderkum High School

Our Attendance Rate



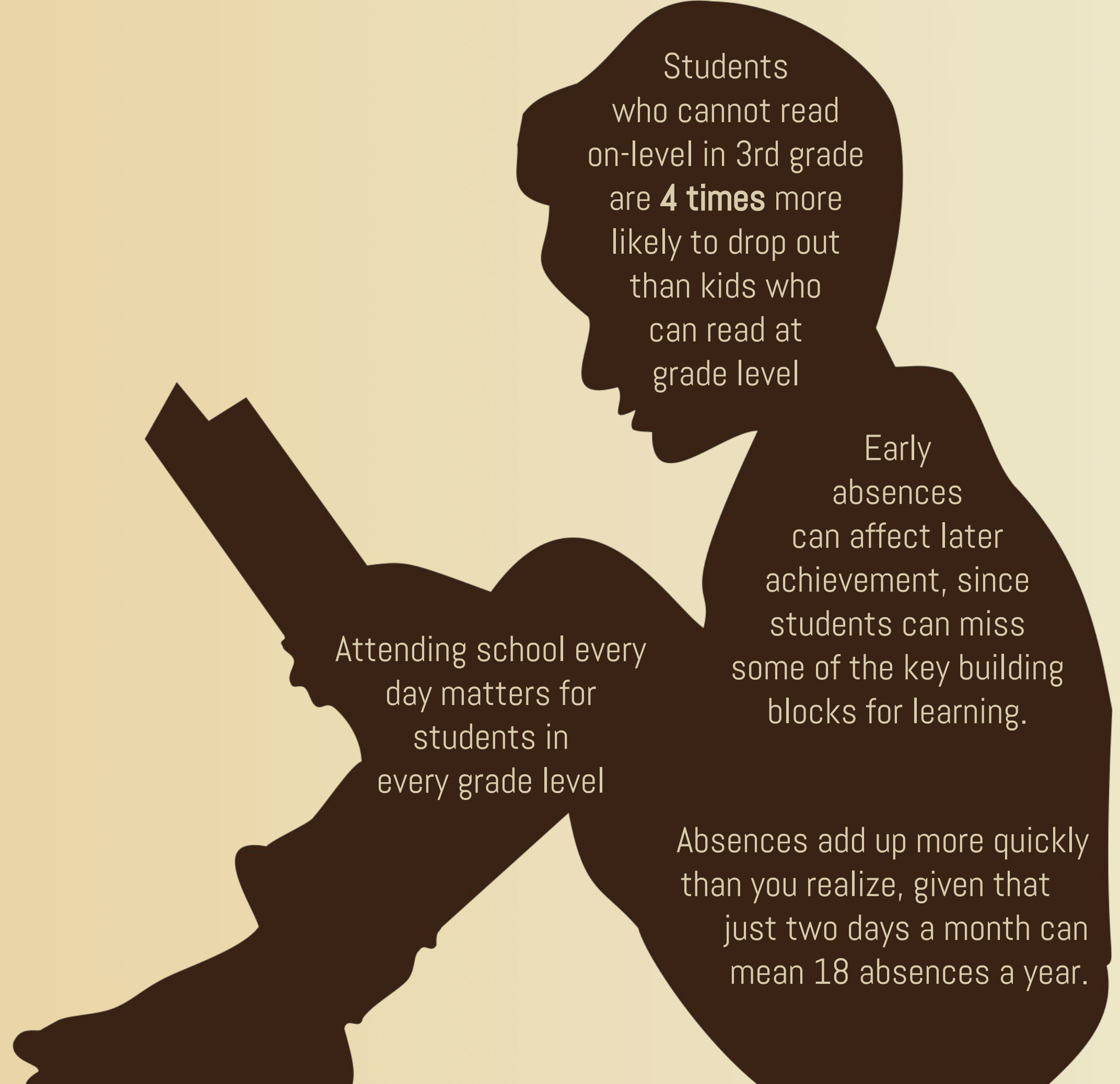
Our Chronic Absentee Rate



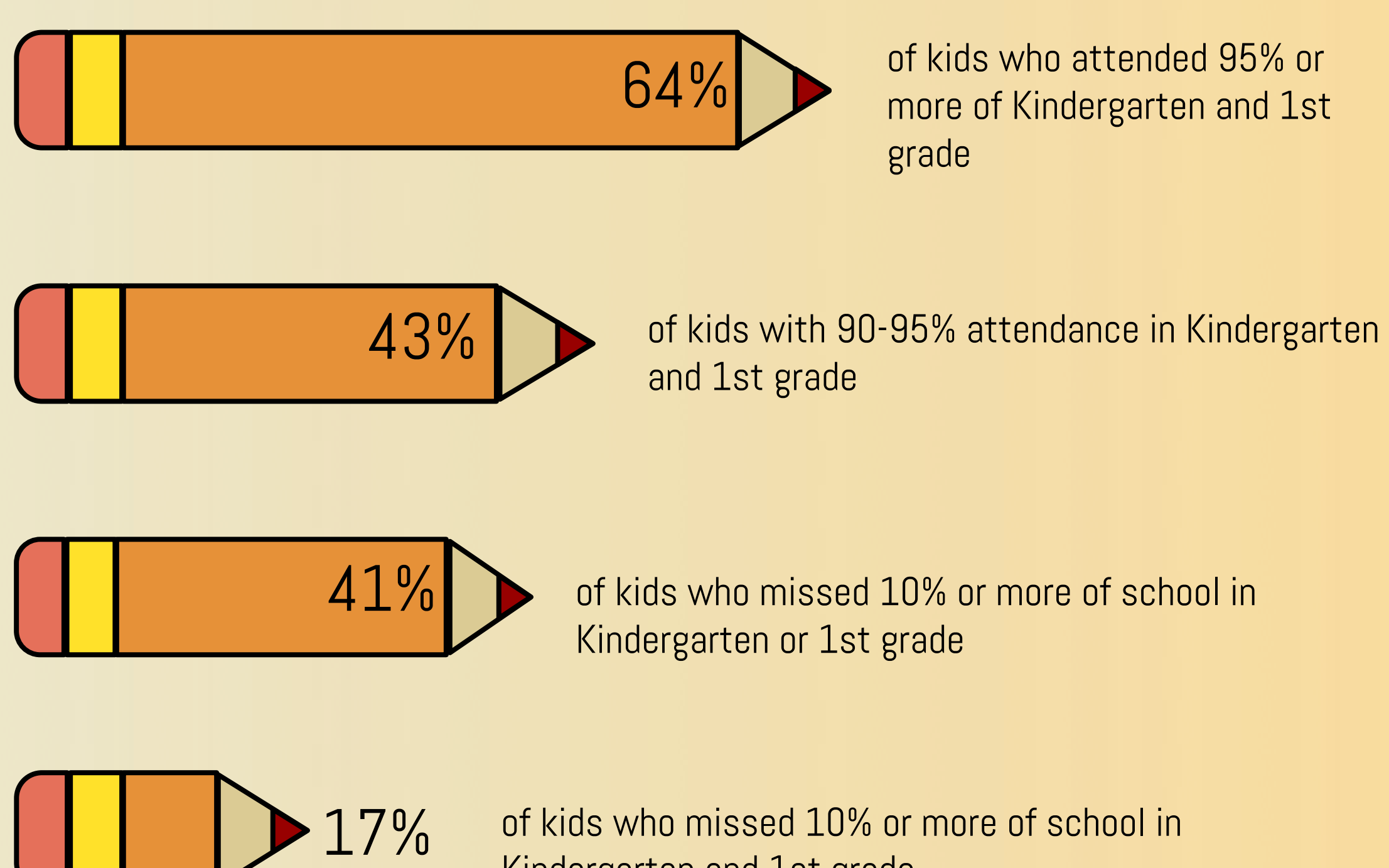
Each year, nearly **230,000** elementary students are chronically absent across the State of California



More than **75%** of chronically absent students in California are also students of poverty



Who can read on grade level at the end of 3rd Grade?



Source: Applied Survey Research & Attendance Works (April 2011)

Important Terms

Attendance Rate

Percent of students who were in school each day

Excused Absence

Valid excuses may include illness, doctor or dentist appointments, personal reasons justified by a parent or guardian and other reasons within the discretion of school administrators.

Chronic Absence

In California, chronic absence is defined as being absent for **ANY** reason (excused or unexcused or suspended from school) for at least 10% of the school year.

Truancy

In California, a student is truant if (s)he is absent or tardy by more than 30 minutes without a valid excuse on 3 occasions in a school year.

Average Daily Attendance (ADA)

ADA is the number of days of school a student attends divided by the total number of days of instruction. A student attending every day would equal one ADA. ADA is typically calculated school-wide, rather than the student-level.