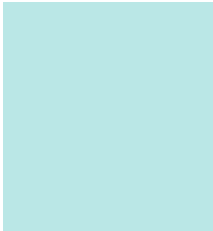




Worthington Academy

Aspire Pathway

Connect, Grow, and Aspire



Individual



Flexible



Blended



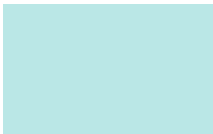
Personal Planning



Connect



Technology



College And Career



Please contact Sean Flynn at sflynn@wscloud.org or Ron Waterwash at rwaterwash@wscloud.org with any questions.

Connect, Grow, and Aspire



Focus



Program Information

Academic Focus

A blended learning environment that supports the individual needs of students including credit recovery, credit advancement, and personalized intervention.

Career and College Exploration

Students have opportunities to explore career and college activities, opportunity for skill development, work experience, and potential credit through CBIP or Credit Flex.

Counseling Services

Counseling services are available to focus on development of self-esteem, reframing our situations to be structured for success, and work with students and families.

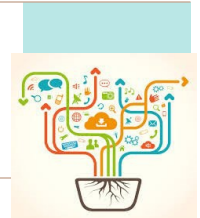
Goal Setting

Short and Long term goals are established at Family Pathway Meeting. Goals are monitored by students, staff, and communicated with family members.

Location



Worthington Academy is located in the west end of Phoenix Middle School. With a secure separate entrance, students experience a repurposed space focused on student learning. Access to technology, flexibility, and building community were inspirations for the space design.



Content



Students have access to the APEX catalog of courses built around Social Studies, English Language Arts, Science, and Mathematics. Personalized learning plans will help students gain credit through both required and elective courses. Explore more information about Apex at <http://www.apexlearning.com/>.



Hours

A morning session from 8:45 – 11:30am and afternoon session from 12:15 – 3:00pm are offered to students. Students have flexibility to take elective courses back at their home high school, participate in co-curricular activities, and all aspects of student life. Worthington Academy works with students and families to develop a flexible plan that meets their individual needs.



Contact

Please see your school counselor for additional information or contact Sean Flynn at sflynn@wscloud.org or (614) 450-4100.