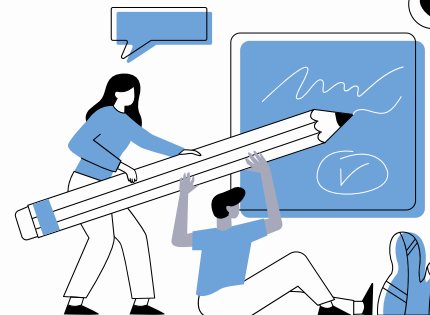




# Middle School Academic Profile



2024 / 2025

Humanitree is a unique and innovative school that stands out for its state-of-the-art facilities, cutting-edge technology, and commitment to providing students with a well-rounded education.

Designed by world renowned architect Rosan Bosch, the school offers a project-based learning approach that fosters creativity, critical thinking, and collaboration among students. Through real-life experiences gained from field trips and guest speakers, students at Humanitree gain a deeper understanding of the world around them and develop skills that prepare them for success in the 21st century.

Technology plays a central role in enhancing education. The school has a VR Studio, Professional Green Room, Editing and Podcasting suites and Cinema. Humanitree is an Apple distinguished school which gives students the opportunity to use Apple products in a creative and innovative way whilst engaging in subject content.

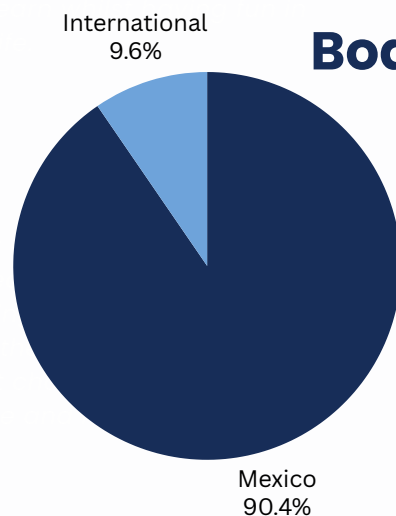
Humanitree's commitment to attracting and retaining the very best students means scholarships are awarded to outstanding students in areas such as academic ability, artistic, technological, entrepreneurial and sporting prowess.

All these factors make Humanitree School an exceptional choice for parents who seek an innovative and forward-thinking education for their children.

## OUR AIM



## Student Body



### UNIVERSITY CHOICE

Humanitree's aim is to provide comprehensive university and college services to students so that they can achieve their goal of being accepted into their top-choice universities.

### PROJECT BASED LEARNING

Engage students in hands-on, authentic real-world projects that help develop critical thinking, problem-solving and collaboration skills

### LIFE SKILLS

Learning life skills equips students with the necessary knowledge and abilities to navigate the challenges of adulthood, such as managing finances, maintaining healthy relationships and making informed decisions.

# Middle School Subjects

## Enrollment

- Humanitree Hive & Flight has 209 students in the school
- Maximum classroom size 16

### Hive 1 - 3

- English
- Maths
- Spanish
- Science
- Computer Science
- Design Technology
- Mexican History
- Humanities
- PE
- Art
- Drama
- Music



**GAVIN JUDD**

ACADEMIC DIRECTOR

gjudd@humanitree.edu.mx

**RYAN GALLETTY**

TEACHING, LEARNING &  
CURRICULUM COORDINATOR

rgalletly@humanitree.edu.mx



**DR BENJAMIN PICKLES**

STUDENT WELLBEING &  
PASTORAL COORDINATOR

bpickles@humanitree.edu.mx



**ARIADNA CAMARGO**

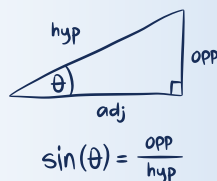
HIVE PSYCHOLOGIST

acamargo@humanitree.edu.mx



### Hive 4 - Core subjects

- English
- Maths
- Spanish
- Science
- Mexican History
- Humanities
- PE



### Hive 4 - Elective subjects

- Additional Maths
- Music
- Business Studies
- Art
- French
- Design Technology
- Sports Science
- Sociology/Psychology
- Computer Science
- Drama
- ICT



**Humanitree**  
Av Constituyentes 1100, Lomas Altas  
Miguel Hidalgo, 11950 Ciudad de México, CDMX  
www.humanitree.edu.mx