



**Concord-Carlisle Regional School District
Concord, MA**

School Year 2023-24 Enrollment Projection Report

Copyright, New England School Development Council, 2023

Table of Contents

Section	Page
Enrollment Summary.....	1
Historical Enrollment Table.....	2
Grades K - 12 Historical Enrollment Graph.....	3
Grades K - 8 Historical Enrollment by Town.....	4
Grades 9 - 12 Historical Enrollment Graph.....	5
Projected Enrollment Table.....	6
Grades K - 12 Projected Enrollment Graph.....	7
Grades K - 8 Projected Enrollment by Town.....	8
Grades 9 - 12 Projected Enrollment Graph.....	9
Historical & Projected Enrollment Graph.....	10
Historical & Projected Enrollment in Grade Combinations Line Graph.....	11
Historical & Projected Enrollment in Grade Combinations Stacked Column Graph.....	12
Birth to Kindergarten Graph.....	13
Additional Information	14
New England's PK-12 Enrollment Trends.....	15
Methodology, Reliability and Use of this Document.....	16

Concord-Carlisle RSD Enrollment Summary

NESDEC is pleased to send you this report displaying the past, present, and projected enrollments for your District. It is important to update enrollment projections every year to identify changes in enrollment patterns. Ten-year projections are designed to provide your District with yearly, up-to-date enrollment information that can be used by boards and administrators for effective planning and allocation of resources.

Included in this report are graphs representing historical and projected grade-by-grade enrollments, as well as historical and projected enrollments in grade combinations. We received the enrollment data from the District, and we assume that the method of collecting this data has been consistent from year to year.

Enrollment projections are more reliable in Years #1-4 in the future and less reliable in the “out-years.” Projections six to ten years out may serve as a guide to future enrollments and are useful for planning purposes. In light of this, NESDEC has added a “Spring Update Refresher” enrollment projection at no cost to affiliates. For more information, please refer to the Methodology, Reliability and Use of this Document section.

The NESDEC enrollment projection fell within 7 students of the K-12 total, 3,729 projected vs. 3,722 enrolled. The enrollment projection for Grades 9-12 fell within 31 students, 1,252 projected vs. 1,221 enrolled.

Over the next three years, Grades 9-12 enrollments are projected to decrease by a total of 91 students.

Historical Enrollment

School District: Concord-Carlisle RSD, MA

11/6/2023

Historical Enrollment By Grade																			
Birth Year	Births*	School Year	PK	K	1	2	3	4	5	6	7	8	9	10	11	12	UNGR	K-12	PK-12
2008	136	2013-14	43	302	292	301	328	323	313	289	321	312	317	312	293	306	0	4009	4052
2009	148	2014-15	35	250	304	300	312	320	314	313	287	328	338	311	310	296	0	3983	4018
2010	142	2015-16	41	279	259	314	293	301	319	314	300	288	333	333	309	313	0	3955	3996
2011	127	2016-17	42	260	295	270	318	294	303	311	324	296	301	334	325	315	0	3946	3988
2012	132	2017-18	40	283	262	302	282	308	308	301	325	325	295	307	337	333	0	3968	4008
2013	157	2018-19	39	266	296	269	304	277	310	311	308	328	330	306	298	340	0	3943	3982
2014	120	2019-20	39	261	279	303	281	302	280	318	305	310	344	325	318	294	0	3920	3959
2015	137	2020-21	48	228	270	282	297	277	293	284	309	305	339	340	322	311	0	3857	3905
2016	151	2021-22	73	255	252	273	303	294	277	294	282	317	316	332	339	325	0	3859	3932
2017	141	2022-23	66	249	268	261	274	294	285	286	286	277	316	318	329	340	< 10 **	3789	3855
2018	129	2023-24	79	265	259	285	273	278	293	281	280	287	274	316	309	322	< 10 **	3730	3809

*Birth data provided by Public Health Vital Records Departments in each state.

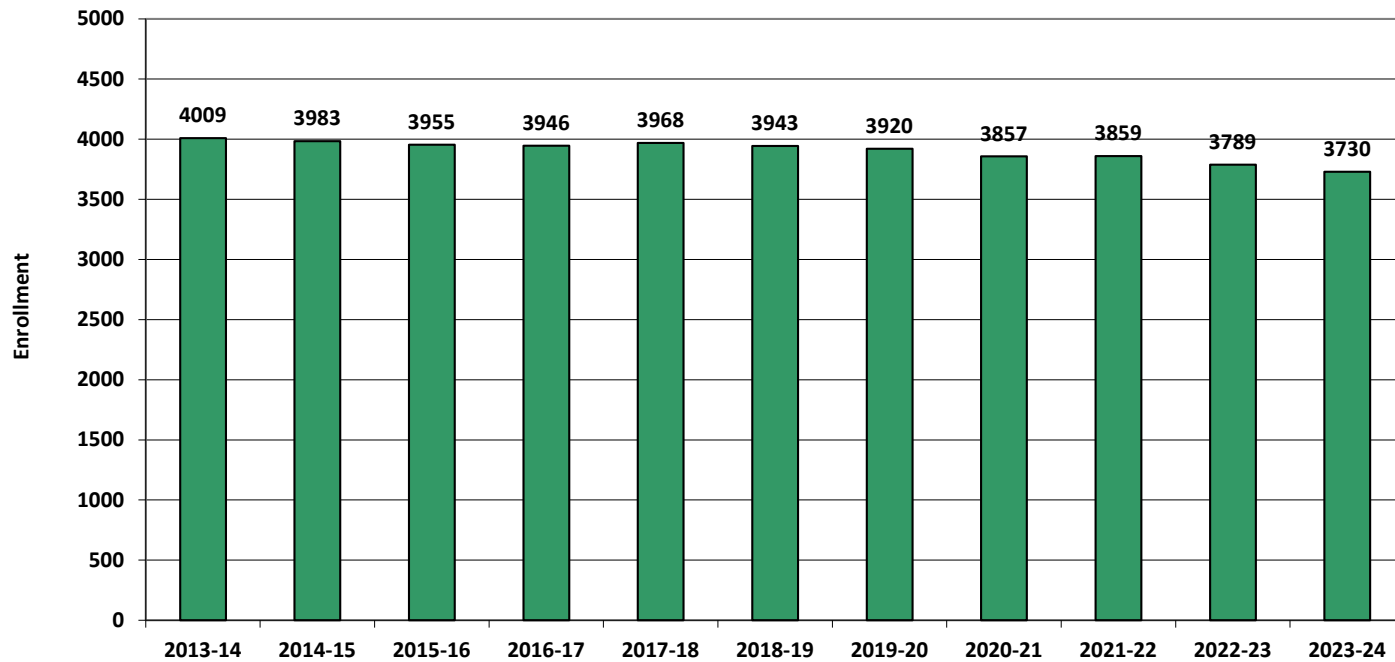
** < 10 Not reported, to protect subgroups with fewer than 10 students.

Historical Enrollment in Grade Combinations									
School Year	PK-5	K-5	PK-2	K-2	3-5	6-8	K-8	6-12	9-12
2013-14	1902	1859	938	895	964	922	2781	2150	1228
2014-15	1835	1800	889	854	946	928	2728	2183	1255
2015-16	1806	1765	893	852	913	902	2667	2190	1288
2016-17	1782	1740	867	825	915	931	2671	2206	1275
2017-18	1785	1745	887	847	898	951	2696	2223	1272
2018-19	1761	1722	870	831	891	947	2669	2221	1274
2019-20	1745	1706	882	843	863	933	2639	2214	1281
2020-21	1695	1647	828	780	867	898	2545	2210	1312
2021-22	1727	1654	853	780	874	893	2547	2205	1312
2022-23	1697	1631	844	778	853	849	2480	2152	1303
2023-24	1732	1653	888	809	844	848	2501	2069	1221

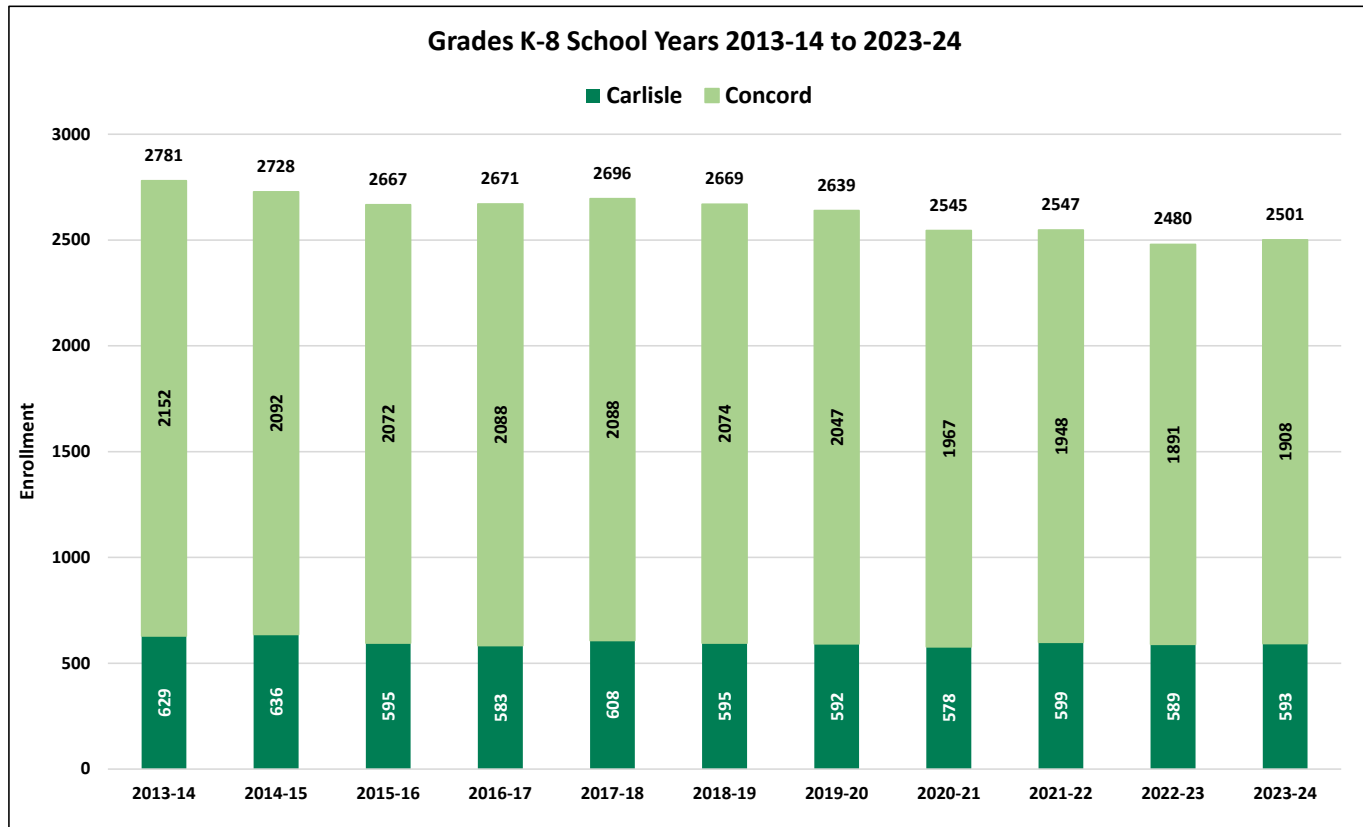
Historical Percentage Changes			
School Year	K-12	Diff.	%
2013-14	4009		
2014-15	3983	-26	-0.6%
2015-16	3955	-28	-0.7%
2016-17	3946	-9	-0.2%
2017-18	3968	22	0.6%
2018-19	3943	-25	-0.6%
2019-20	3920	-23	-0.6%
2020-21	3857	-63	-1.6%
2021-22	3859	2	0.1%
2022-23	3789	-70	-1.8%
2023-24	3730	-59	-1.6%
Change		-279	-7.0%

Historical Enrollment

Grades K-12, School Years 2013-14 to 2023-24



Historical Enrollment By Town



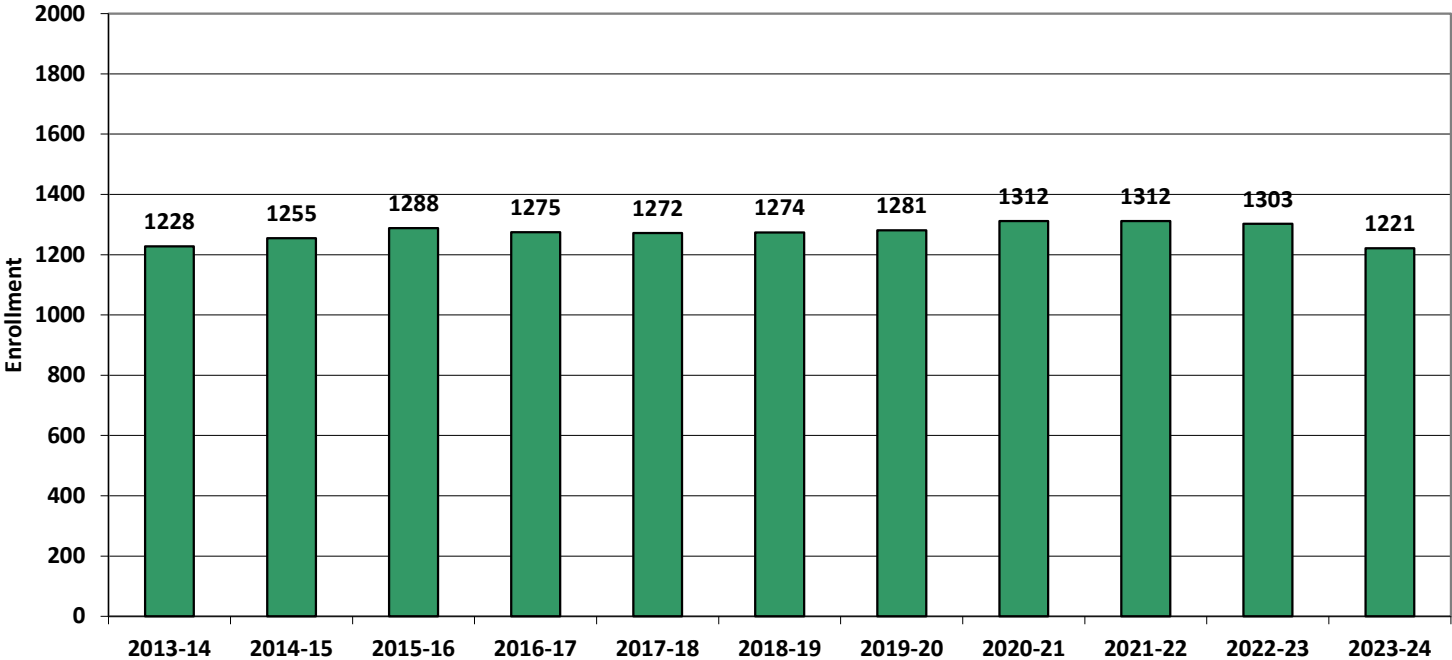
Town	2013-14	2014-15	2015-16	2016-17	2017-18	2018-19	2019-20	2020-21	2021-22	2022-23	2023-24
Carlisle	23%	23%	22%	22%	23%	22%	22%	23%	24%	24%	24%
Concord	77%	77%	78%	78%	77%	78%	78%	77%	76%	76%	76%

* percentages rounded



Historical Enrollment

Grades 9-12, School Years 2013-14 to 2023-24



Projected Enrollment

School District: Concord-Carlisle RSD, MA

11/6/2023

Enrollment Projections By Grade*																				
Birth Year	Births*		School Year	PK	K	1	2	3	4	5	6	7	8	9	10	11	12	UNGR	K-12	PK-12
2018	129		2023-24	79	265	259	285	273	278	293	281	280	287	274	316	309	322	< 10 **	3730	3809
2019	146		2024-25	79	271	280	268	294	273	275	296	276	280	293	274	314	308	< 10 **	3710	3789
2020	130		2025-26	80	242	286	289	276	295	270	278	291	276	286	293	272	313	< 10 **	3675	3755
2021	173	(prov.)	2026-27	81	319	255	296	298	276	292	273	273	291	282	286	291	271	< 10 **	3711	3792
2022	142	(prov.)	2027-28	82	266	337	264	305	299	273	295	268	273	297	282	284	290	< 10 **	3741	3823
2023	144	(est.)	2028-29	82	268	281	347	272	304	296	276	290	268	278	297	280	283	< 10 **	3748	3830
2024	147	(est.)	2029-30	84	273	283	290	356	272	301	299	271	290	273	295	278	295	< 10 **	3768	3852
2025	147	(est.)	2030-31	84	274	289	292	299	355	269	304	294	271	296	273	276	294	< 10 **	3794	3878
2026	151	(est.)	2031-32	85	279	290	299	300	300	351	272	299	294	276	296	271	275	< 10 **	3810	3895
2027	146	(est.)	2032-33	87	272	295	300	308	300	297	355	268	299	300	276	294	270	< 10 **	3842	3929
2028	147	(est.)	2033-34	88	273	287	305	309	307	297	300	349	268	305	300	274	293	< 10 **	3875	3963

Note: Ungraded students (UNGR) often are high school students whose anticipated years of graduation are unknown, or students with special needs - UNGR not included in Grade Combinations for 7-12, 9-12, etc.

 Based on an estimate of births

 Based on children already born

 Based on students already enrolled

*Birth data provided by Public Health Vital Records Departments in each state.

** < 10 Not reported, to protect subgroups with fewer than 10 students.

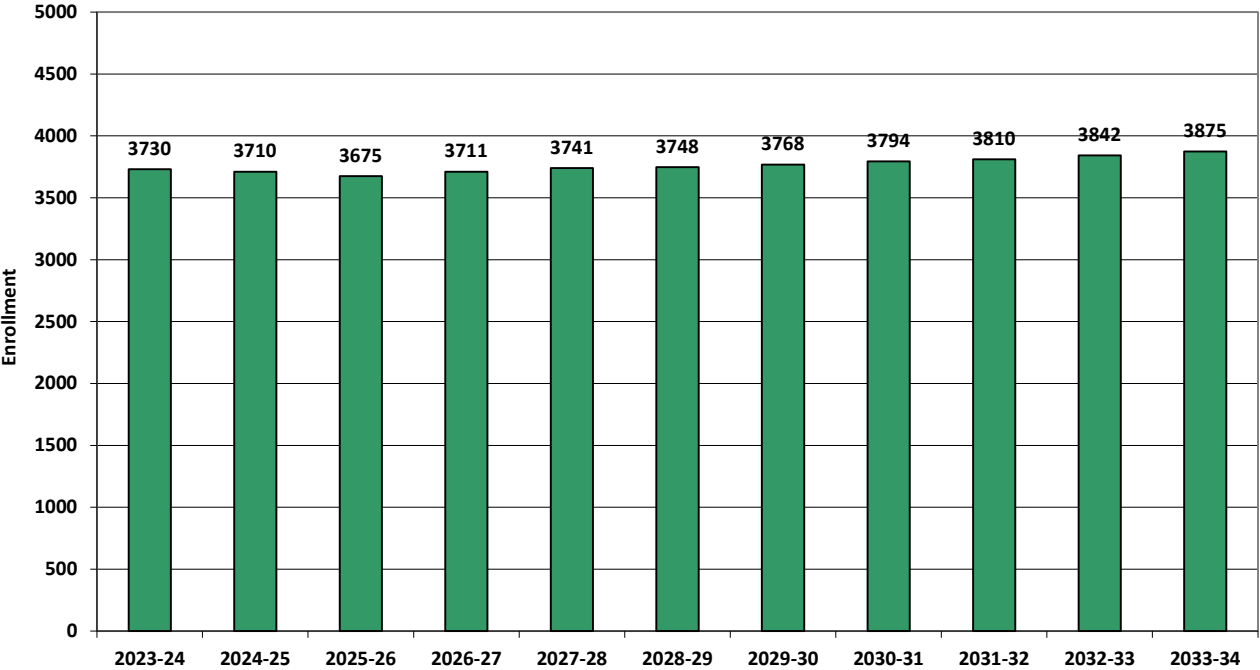
Projected Enrollment in Grade Combinations*									
School Year	PK-5	K-5	PK-2	K-2	3-5	6-8	K-8	6-12	9-12
2023-24	1732	1653	888	809	844	848	2501	2069	1221
2024-25	1740	1661	898	819	842	852	2513	2041	1189
2025-26	1738	1658	897	817	841	845	2503	2009	1164
2026-27	1817	1736	951	870	866	837	2573	1967	1130
2027-28	1826	1744	949	867	877	836	2580	1989	1153
2028-29	1850	1768	978	896	872	834	2602	1972	1138
2029-30	1859	1775	930	846	929	860	2635	1985	1125
2030-31	1862	1778	939	855	923	869	2647	2008	1139
2031-32	1904	1819	953	868	951	865	2684	1983	1118
2032-33	1859	1772	954	867	905	922	2694	2062	1140
2033-34	1866	1778	953	865	913	917	2695	2089	1172

Projected Percentage Changes			
School Year	K-12	Diff.	%
2023-24	3730	0	0.0%
2024-25	3710	-20	-0.5%
2025-26	3675	-35	-0.9%
2026-27	3711	36	1.0%
2027-28	3741	30	0.8%
2028-29	3748	7	0.2%
2029-30	3768	20	0.5%
2030-31	3794	26	0.7%
2031-32	3810	16	0.4%
2032-33	3842	32	0.8%
2033-34	3875	33	0.9%
Change		145	3.9%

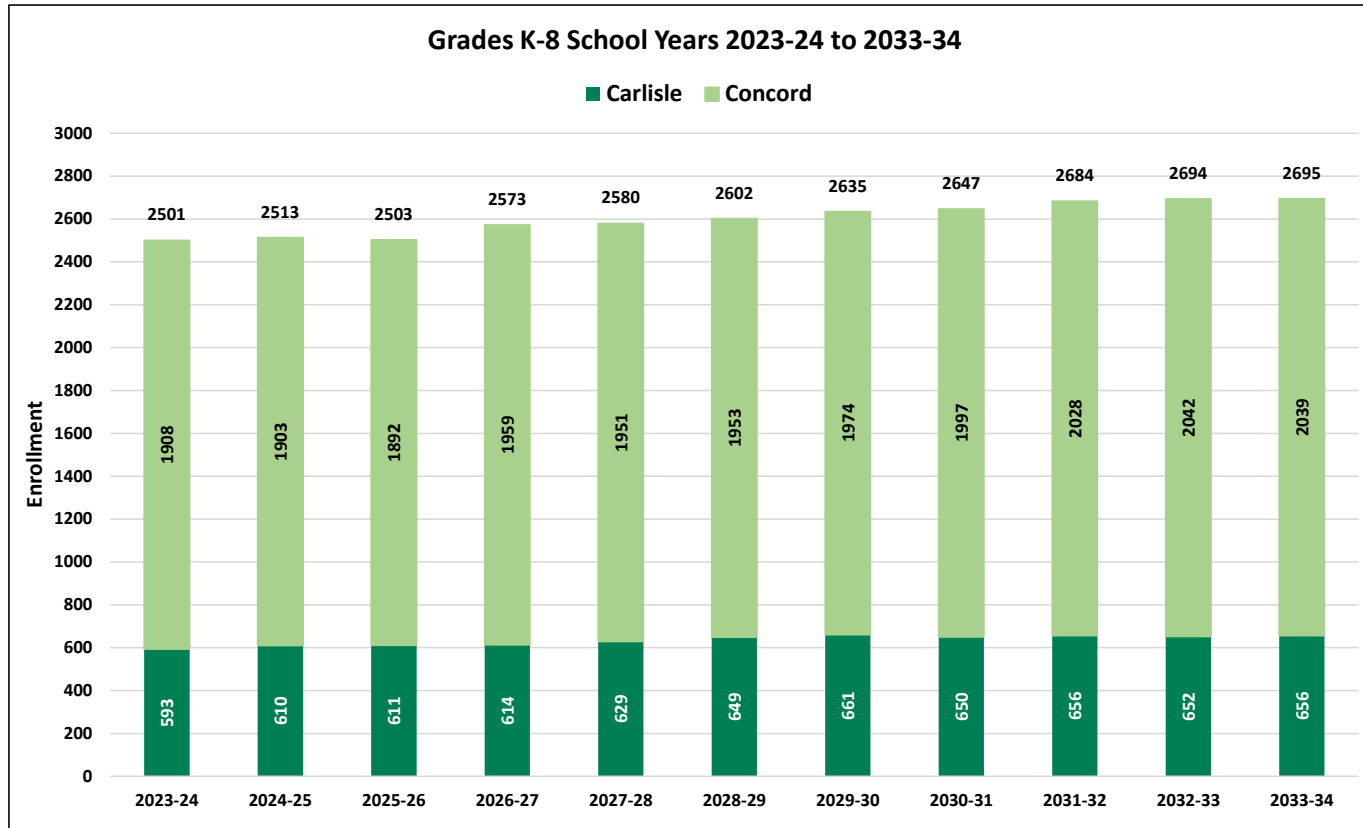
*Projections should be updated annually to reflect changes in in/out-migration of families, real estate sales, residential construction, births, and similar factors.

NESDEC **Projected Enrollment**

Grades K-12, School Years 2023-24 to 2033-34



Projected Enrollment By Town



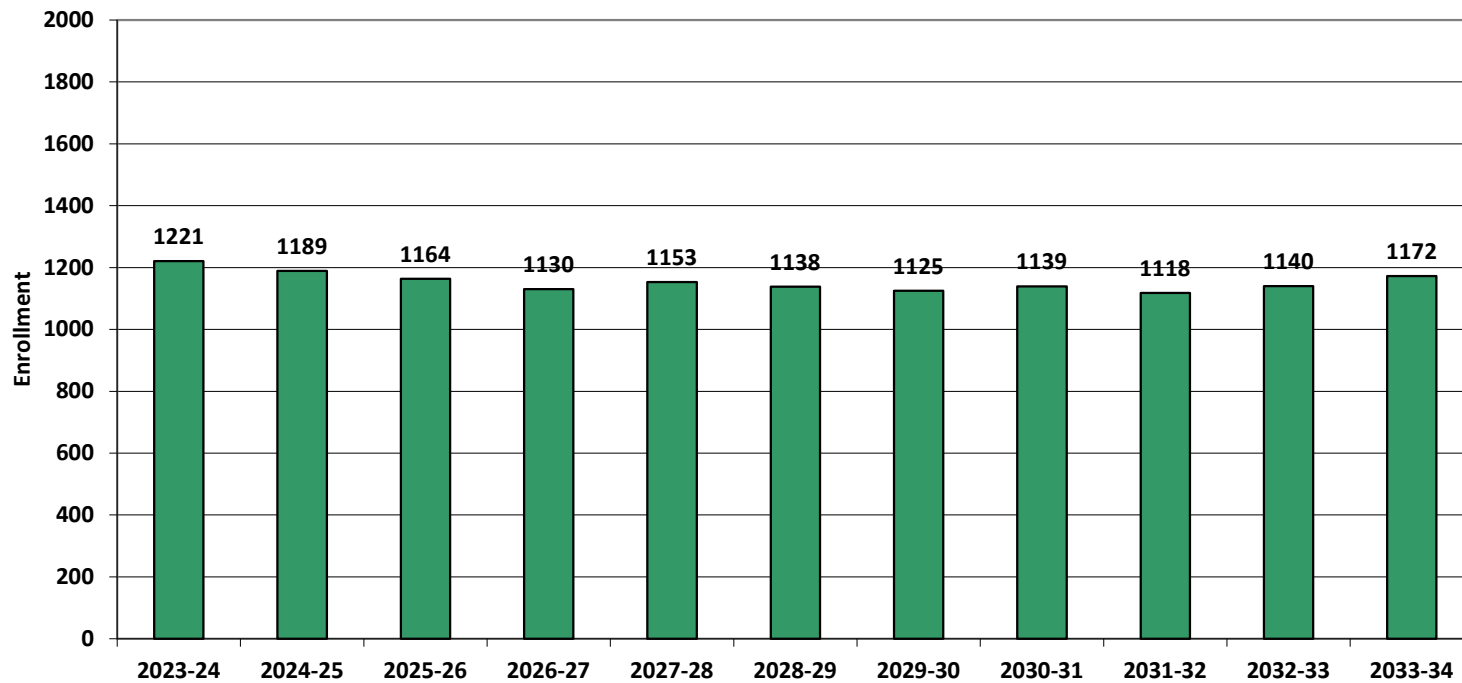
Town	2023-24	2024-25	2025-26	2026-27	2027-28	2028-29	2029-30	2030-31	2031-32	2032-33	2033-34
Carlisle	24%	24%	24%	24%	24%	25%	25%	25%	24%	24%	24%
Concord	76%	76%	76%	76%	76%	75%	75%	75%	76%	76%	76%
	100%	100%	100%	100%	100%	100%	100%	100%	100%	100%	100%

* percentages rounded

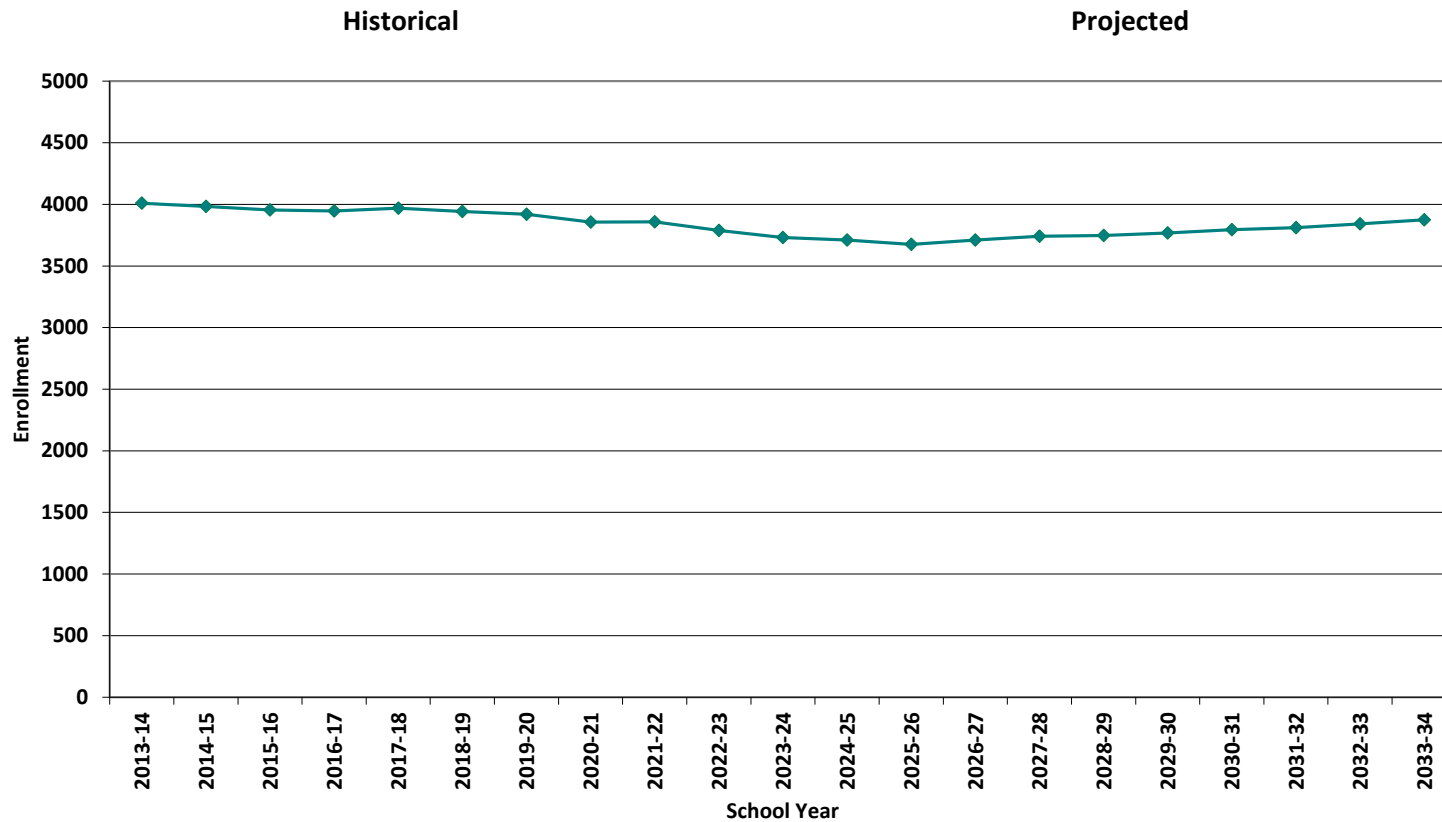


Projected Enrollment

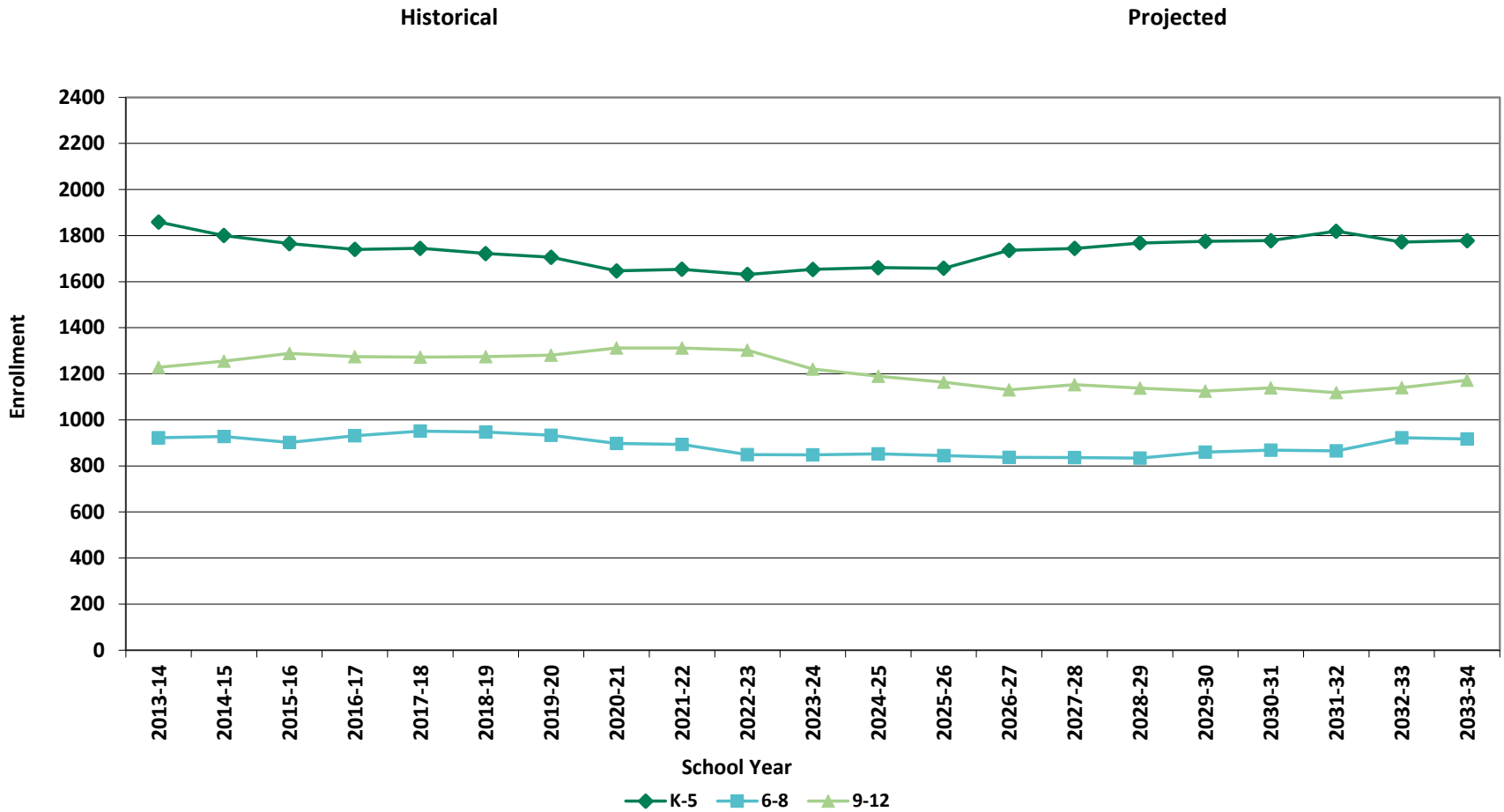
Grades 9-12, School Years 2023-24 to 2033-34



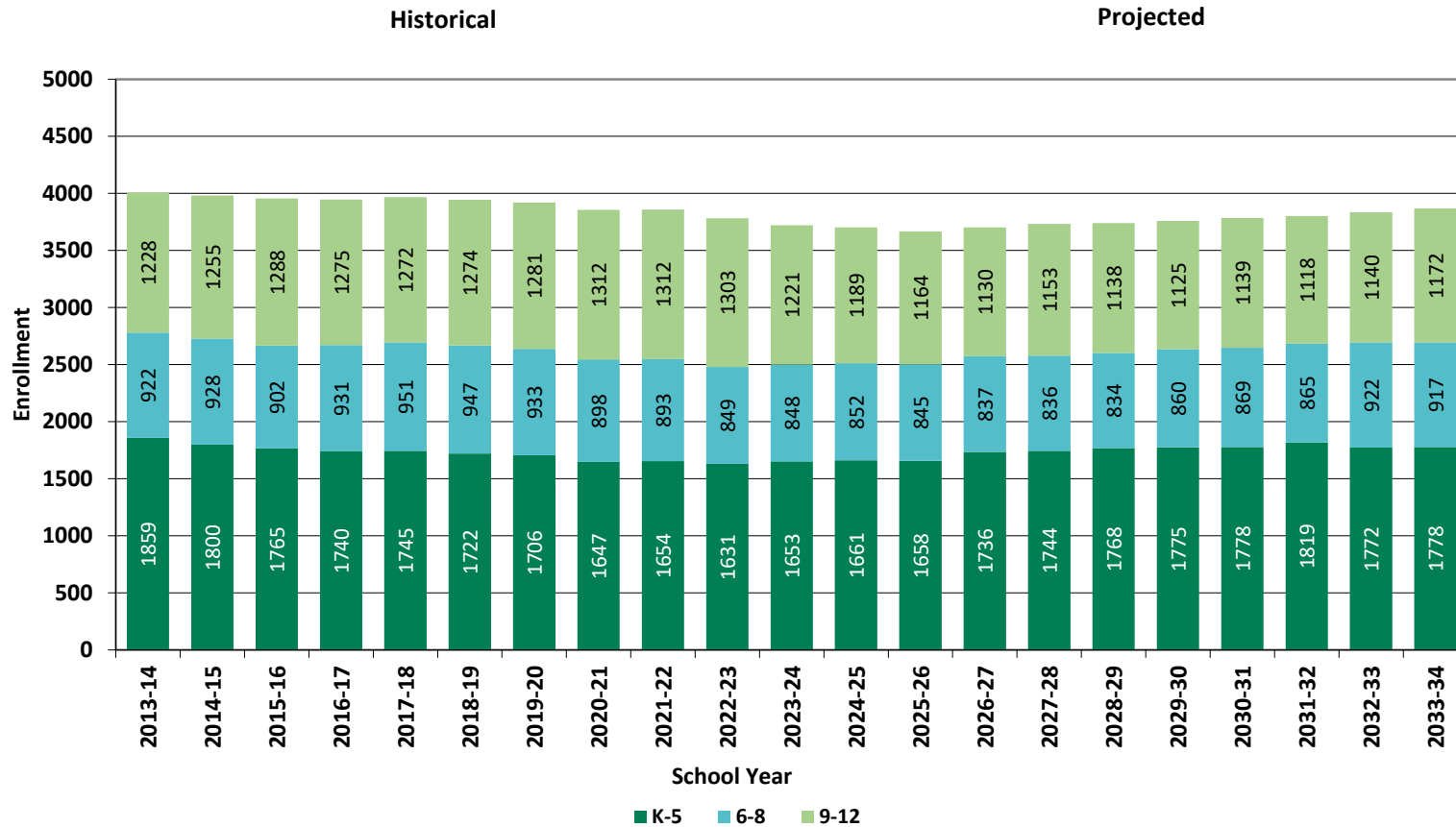
Historical & Projected Enrollment



Historical & Projected Enrollments in Grade Combinations

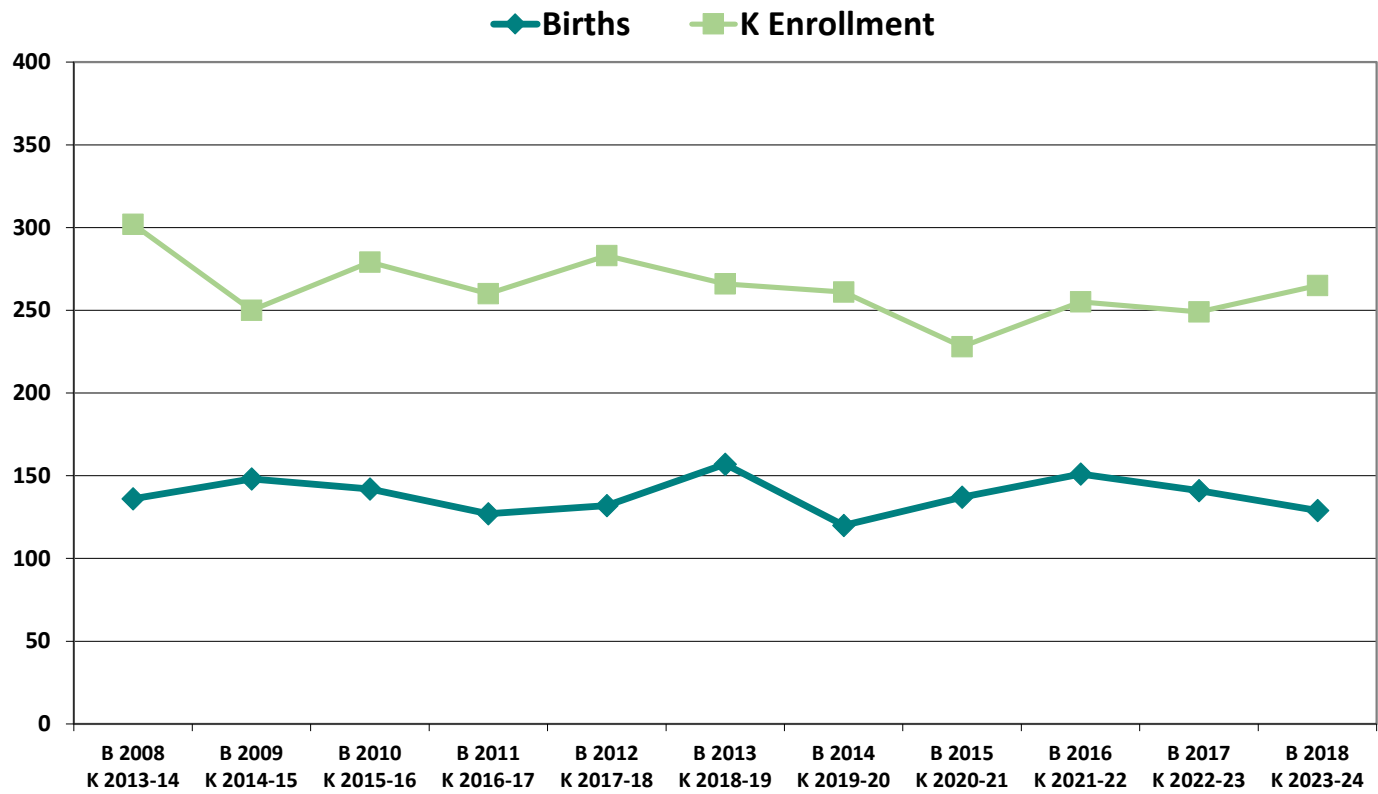


Historical & Projected Enrollments in Grade Combinations



NESEDEC

Birth-to-Kindergarten Relationship



Additional Information

Combined Building Permits Issued		
(Source: HUD)		
Year	Single-Family	Multi-Units
2019	38	2
2020	35	0
2021	37	0
2022	32	0
2023	24 to date	0 to date

Combined District						
School Year	9 - 12 CTE	9 - 12 Non-Public	9 - 12 Choice-In	9 - 12 Choice-Out	9 - 12 Out-of-District SPED	9 - 12 Homeschool
2019-20	29	241	0	0	40	12
2020-21	25	105	17	< 10 **	33	19
2021-22	n/a	212	0	< 10 **	31	16
2022-23	32	211	22	< 10 **	29	14
2023-24	42	n/a	24	< 10 **	37	< 10 **

*The above data was provided by the District, with the exception of building permit data (provided by HUD).

"n/a" signifies that information was not provided by District.

** < 10 Not reported, to protect subgroups with fewer than 10 students.

New England's PK-12 Enrollments Trends

From 2021 to 2030, the US Department of Education anticipates changes in PK-12 enrollment of -3.2% in the South, -6.0% in the West, -3.9% in the Midwest, -6.0% in the Northeast, and a total of -4.4% nationwide.

State	Fall 2021 PK - 12	Fall 2030 Projected	PK-12 Decline	% Change 2021-2030
USA	49,452,864	47,252,500	-2,200,364	-4.4%
CT	508,686	475,600	-33,086	-6.5%
ME	173,215	161,800	-11,415	-6.6%
MA	921,180	879,900	-41,280	-4.5%
NH	170,005	144,600	-25,405	-14.9%
RI	138,566	130,200	-8,366	-6.0%
VT	83,975	74,600	-9,375	-11.2%

Source: U.S. Department of Education, National Center for Education Statistics, Enrollment in public elementary and secondary schools, by region, state, and jurisdiction: Selected years, fall 1990 through fall 2030, Table 203.20, March 2023.

Although most New England Districts are seeing a decline in the number of births, NESDEC's experience indicates that the impact on enrollment varies from District to District. Almost half of New England Districts have been growing in PK-12 enrollment, and a similar number are declining (often in rural areas), with the other Districts remaining stable.

PROJECTION METHODOLOGY

Cohort component (survival) technique is a frequently used method of preparing enrollment forecasts. NESDEC uses this method, but modifies it in order to move away from forecasts that are wholly computer- or formula-driven. Such modification permits the incorporation of important, current district-specific demographic information into the generation of enrollment forecasts (such as in/out-migration of students, resident births, HUD-reported building permits, etc.). Percentages are calculated from the historical enrollment data to determine a reliable percentage of increase or decrease in enrollment between any two grades. For example, if 100 students enrolled in Grade 1 in 2022-23 increased to 104 students in Grade 2 in 2023-24, the percentage of survival would be 104%, or a ratio of 1.04. Ratios are calculated between each pair of grades or years in school over several recent years.

After study and analysis of the historical ratios, and based upon a reasonable set of assumptions regarding births, migration rates, retention rates, etc., ratios most indicative of future growth patterns are determined for each pair of grades. The ratios thus selected are applied to the present enrollment statistics to project into future years. The ratios are the key factors in the reliability of the projections, assuming validity of the data at the starting point.

RELIABILITY OF ENROLLMENT PROJECTIONS

Projections can serve as useful guides to school administrators for educational planning. Enrollment projections are more reliable in Years #1-4 in the future and less reliable in the "out-years." Projections six to ten years out may serve as a guide to future enrollments and are useful for planning purposes, but they should be viewed as subject to change given the likelihood of potential shifts in underlying assumptions/trends, such as student migration, births as they relate to Kindergarten enrollment, and other factors.

Projections that are based upon **the children who already are in the district** (the current K-12 population only) will be the most reliable. The second level of reliability will be for those children already **born into the community but not yet old enough to be in school**. The least reliable category is the group for which an estimate must be made **to predict the number of births**, thereby adding additional uncertainty. See these three multi-colored groupings on the "Projected Enrollment" tab.

Annual updates allow for early identification of recent changes in historical trends. When the actual enrollment in a grade is significantly different (higher or lower) from the projected number, it is important (yet difficult) to determine whether this is a one-year aberration or whether a new trend may have begun. **In light of this possibility, NESDEC urges all school districts to have updated enrollment forecasts developed by NESDEC each October.** This service is available at no cost to affiliated school districts.

USING THIS INFORMATION ELECTRONICALLY

If you would like to extract the information contained in this report for your own documents or presentations, you can use screenshots, which can be inserted into PowerPoint slides, Word documents, etc. Because screenshots create graphics, the image is not editable. Please feel free to contact us if you need assistance in this matter, by phone (508-481-9444) or by email (ep@nesdec.org).