



**Concord-Carlisle Regional School District  
Concord, MA**

**2022-23 Enrollment Projection Report**

# Table of Contents

Section	Page
Executive Summary.....	1
Historical Enrollment Table.....	2
Historical Enrollment Graph.....	3
Historical Enrollment by Town.....	4
Projected Enrollment Table.....	5
Projected Enrollment Graph.....	6
Projected Enrollment by Town.....	7
Historical & Projected Enrollment Graph.....	8
Historical & Projected Enrollment in Grade Combinations Line Graph.....	9
Historical & Projected Enrollment in Grade Combinations Stacked Column Graph.....	10
Birth to Kindergarten Relationship Graph.....	11
Additional Information .....	12
New England's PK-12 Enrollment Trends.....	13
Reliability and Use of this Document .....	14

# Enrollment Summary

The global pandemic continues to influence our nation's public health and economic stability in unpredictable ways. As such, it is still too early to identify many of the factors that could impact school enrollments. Over the past school year, we have seen fluctuations in the real estate market and job trends, which have impacted student attendance patterns. Moreover, during the past school year, we have seen how school enrollment patterns can differ substantially from one district to another, with some districts losing students while others experience an influx of students.

We are pleased to send you this report displaying the past, present, and projected enrollments for the District. These ten-year projections are designed to provide the District with yearly, up-to-date enrollment information that can be used by boards and administrators for effective planning and allocation of resources. Included in this report are graphs representing historical and projected grade-by-grade enrollments, as well as historical and projected enrollments in grade combinations. We have received the figures given to us by the District, and we assume that the method of collecting the enrollment data has been consistent from year to year.

Enrollment projections are more reliable in Years #1-4 in the future and less reliable in the "out-years." Projections six to ten years out may serve as a guide to future enrollments and are useful for planning purposes. In light of this, NESDEC has added a "Second Semester Refresher" enrollment projection at no cost to affiliates. (For more information please refer to the Reliability and Use of This Document section)

The NESDEC enrollment projection fell within 81 students of the K-12 total, 3,864 students projected vs. 3,783 enrolled. The enrollment projection for Grades 9-12 fell within 21 students, 1,324 projected vs. 1,303 enrolled.

Over the next three years, Grades 9-12 enrollments are projected to decrease by a total of 104 students.

# Historical Enrollment

School District: Concord-Carlisle RSD, MA

1/19/2023

Historical Enrollment By Grade																			
Birth Year	Births*	School Year	PK	K	1	2	3	4	5	6	7	8	9	10	11	12	UNGR	K-12	PK-12
2007	129	2012-13	58	274	275	311	317	310	293	324	304	321	309	295	302	310	0	3945	4003
2008	136	2013-14	43	302	292	301	328	323	313	289	321	312	317	312	293	306	0	4009	4052
2009	148	2014-15	35	250	304	300	312	320	314	313	287	328	338	311	310	296	0	3983	4018
2010	142	2015-16	41	279	259	314	293	301	319	314	300	288	333	333	309	313	0	3955	3996
2011	127	2016-17	42	260	295	270	318	294	303	311	324	296	301	334	325	315	0	3946	3988
2012	132	2017-18	40	283	262	302	282	308	308	301	325	325	295	307	337	333	0	3968	4008
2013	157	2018-19	39	266	296	269	304	277	310	311	308	328	330	306	298	340	0	3943	3982
2014	120	2019-20	39	261	279	303	281	302	280	318	305	310	344	325	318	294	0	3920	3959
2015	137	2020-21	48	228	270	282	297	277	293	284	309	305	339	340	322	311	0	3857	3905
2016	151	2021-22	73	255	252	273	303	294	277	294	282	317	316	332	339	325	0	3859	3932
2017	141	2022-23	66	249	268	261	274	294	285	286	286	277	79	65	70	75	< 10 **	3789	3855

\*Birth data provided by Public Health Vital Records Departments in each state.

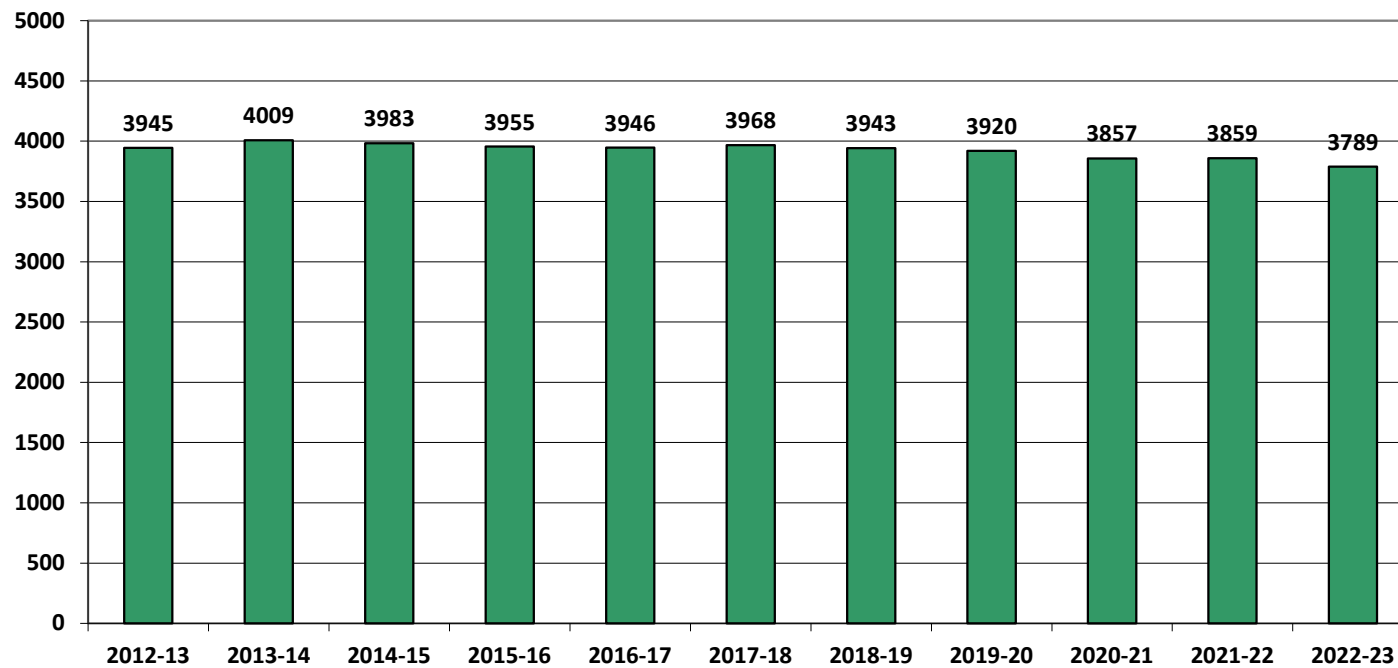
\*\* < 10 Not reported, to protect subgroups with fewer than 10 students.

Historical Enrollment in Grade Combinations									
Year	PK-5	K-5	PK-8	K-8	5-8	6-8	7-8	6-12	9-12
2012-13	1838	1780	2787	2729	1242	949	625	2165	1216
2013-14	1902	1859	2824	2781	1235	922	633	2150	1228
2014-15	1835	1800	2763	2728	1242	928	615	2183	1255
2015-16	1806	1765	2708	2667	1221	902	588	2190	1288
2016-17	1782	1740	2713	2671	1234	931	620	2206	1275
2017-18	1785	1745	2736	2696	1259	951	650	2223	1272
2018-19	1761	1722	2708	2669	1257	947	636	2221	1274
2019-20	1745	1706	2678	2639	1213	933	615	2214	1281
2020-21	1695	1647	2593	2545	1191	898	614	2210	1312
2021-22	1727	1654	2620	2547	1170	893	599	2205	1312
2022-23	1697	1631	2546	2480	1134	849	563	2152	1303

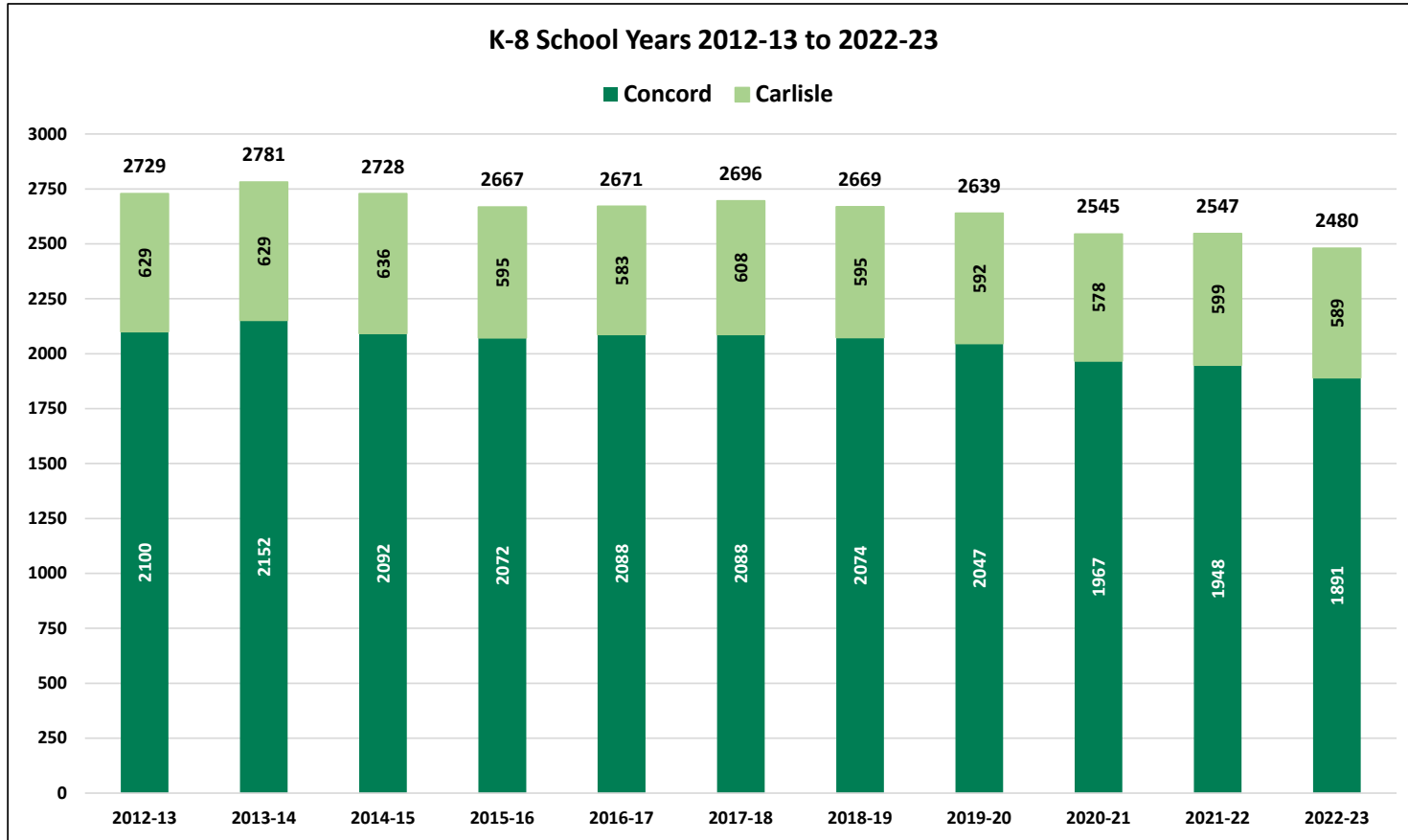
Historical Percentage Changes			
Year	K-12	Diff.	%
2012-13	3945	0	0.0%
2013-14	4009	64	1.6%
2014-15	3983	-26	-0.6%
2015-16	3955	-28	-0.7%
2016-17	3946	-9	-0.2%
2017-18	3968	22	0.6%
2018-19	3943	-25	-0.6%
2019-20	3920	-23	-0.6%
2020-21	3857	-63	-1.6%
2021-22	3859	2	0.1%
2022-23	3789	-70	-1.8%
Change		-156	-4.0%

# Historical Enrollment

K-12, School Years 2012-13 to 2022-23



# Historical Enrollment By Town



Town	2012-13	2013-14	2014-15	2015-16	2016-17	2017-18	2018-19	2019-20	2020-21	2021-22	2022-23
Concord	77%	77%	77%	78%	78%	77%	78%	78%	77%	76%	76%
Carlisle	23%	23%	23%	22%	22%	23%	22%	22%	23%	24%	24%

\* percentages rounded

# Projected Enrollment

School District: Concord-Carlisle RSD, MA

1/19/2023

Enrollment Projections By Grade*																				
Birth Year	Births*		School Year	PK	K	1	2	3	4	5	6	7	8	9	10	11	12	UNGR	K-12	PK-12
2017	141		2022-23	66	249	268	261	274	294	285	286	286	277	316	318	329	340	< 10 **	3789	3855
2018	129		2023-24	66	244	265	275	268	272	294	289	284	286	289	316	318	329	< 10 **	3735	3801
2019	146		2024-25	66	271	259	272	283	266	272	298	286	284	298	289	316	318	< 10 **	3718	3784
2020	130		2025-26	66	242	288	266	279	282	266	276	295	286	296	298	289	316	< 10 **	3685	3751
2021	173	(prov.)	2026-27	68	316	258	295	274	277	283	269	273	295	298	296	298	289	< 10 **	3727	3795
2022	144	(est.)	2027-28	68	267	336	264	302	274	277	286	267	273	307	298	296	298	< 10 **	3751	3819
2023	144	(est.)	2028-29	68	268	284	344	271	300	276	280	284	267	285	307	298	296	< 10 **	3766	3834
2024	147	(est.)	2029-30	69	273	285	291	352	269	300	279	278	284	278	285	307	298	< 10 **	3785	3854
2025	148	(est.)	2030-31	70	273	291	292	298	349	269	304	277	278	296	278	285	307	< 10 **	3803	3873
2026	151	(est.)	2031-32	70	280	291	298	300	296	349	272	301	277	290	296	278	285	< 10 **	3819	3889
2027	147	(est.)	2032-33	70	273	298	298	305	298	296	354	270	301	289	290	296	278	< 10 **	3852	3922

Note: Ungraded students (UNGR) often are high school students whose anticipated years of graduation are unknown, or students with special needs - UNGR not included in Grade Combinations for 7-12, 9-12, etc.

Based on an estimate of births

Based on children already born

Based on students already enrolled

\*Birth data provided by Public Health Vital Records Departments in each state.

\*\* < 10 Not reported, to protect subgroups with fewer than 10 students.

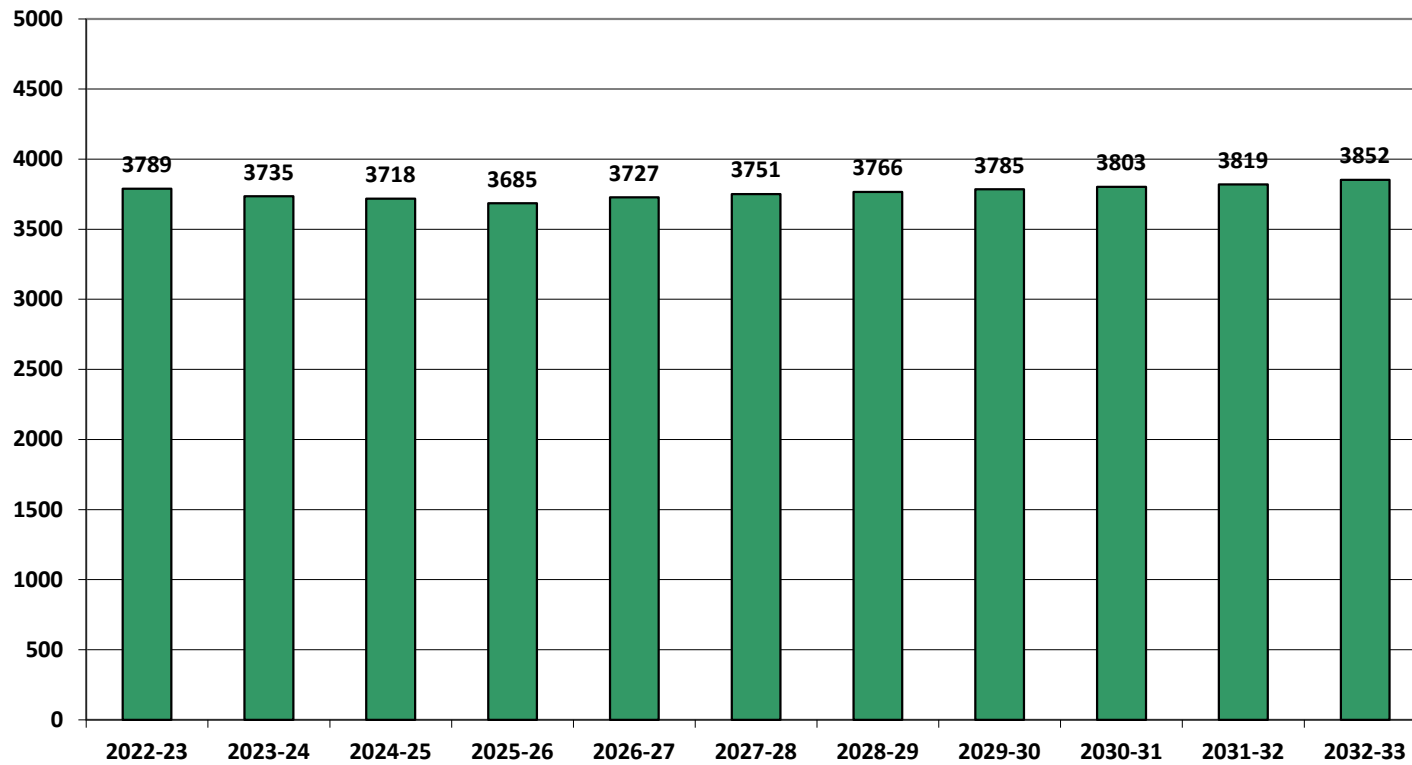
Projected Enrollment in Grade Combinations*									
Year	PK-5	K-5	PK-8	K-8	5-8	6-8	7-8	6-12	9-12
2022-23	1697	1631	2546	2480	1134	849	563	2152	1303
2023-24	1684	1618	2543	2477	1153	859	570	2111	1252
2024-25	1689	1623	2557	2491	1140	868	570	2089	1221
2025-26	1689	1623	2546	2480	1123	857	581	2056	1199
2026-27	1771	1703	2608	2540	1120	837	568	2018	1181
2027-28	1788	1720	2614	2546	1103	826	540	2025	1199
2028-29	1811	1743	2642	2574	1107	831	551	2017	1186
2029-30	1839	1770	2680	2611	1141	841	562	2009	1168
2030-31	1842	1772	2701	2631	1128	859	555	2025	1166
2031-32	1884	1814	2734	2664	1199	850	578	1999	1149
2032-33	1838	1768	2763	2693	1221	925	571	2078	1153

Projected Percentage Changes			
Year	K-12	Diff.	%
2022-23	3789	0	0.0%
2023-24	3735	-54	-1.4%
2024-25	3718	-17	-0.5%
2025-26	3685	-33	-0.9%
2026-27	3727	42	1.1%
2027-28	3751	24	0.6%
2028-29	3766	15	0.4%
2029-30	3785	19	0.5%
2030-31	3803	18	0.5%
2031-32	3819	16	0.4%
2032-33	3852	33	0.9%
Change	63	1.7%	

\*Projections should be updated annually to reflect changes in in/out-migration of families, real estate sales, residential construction, births, and similar factors.

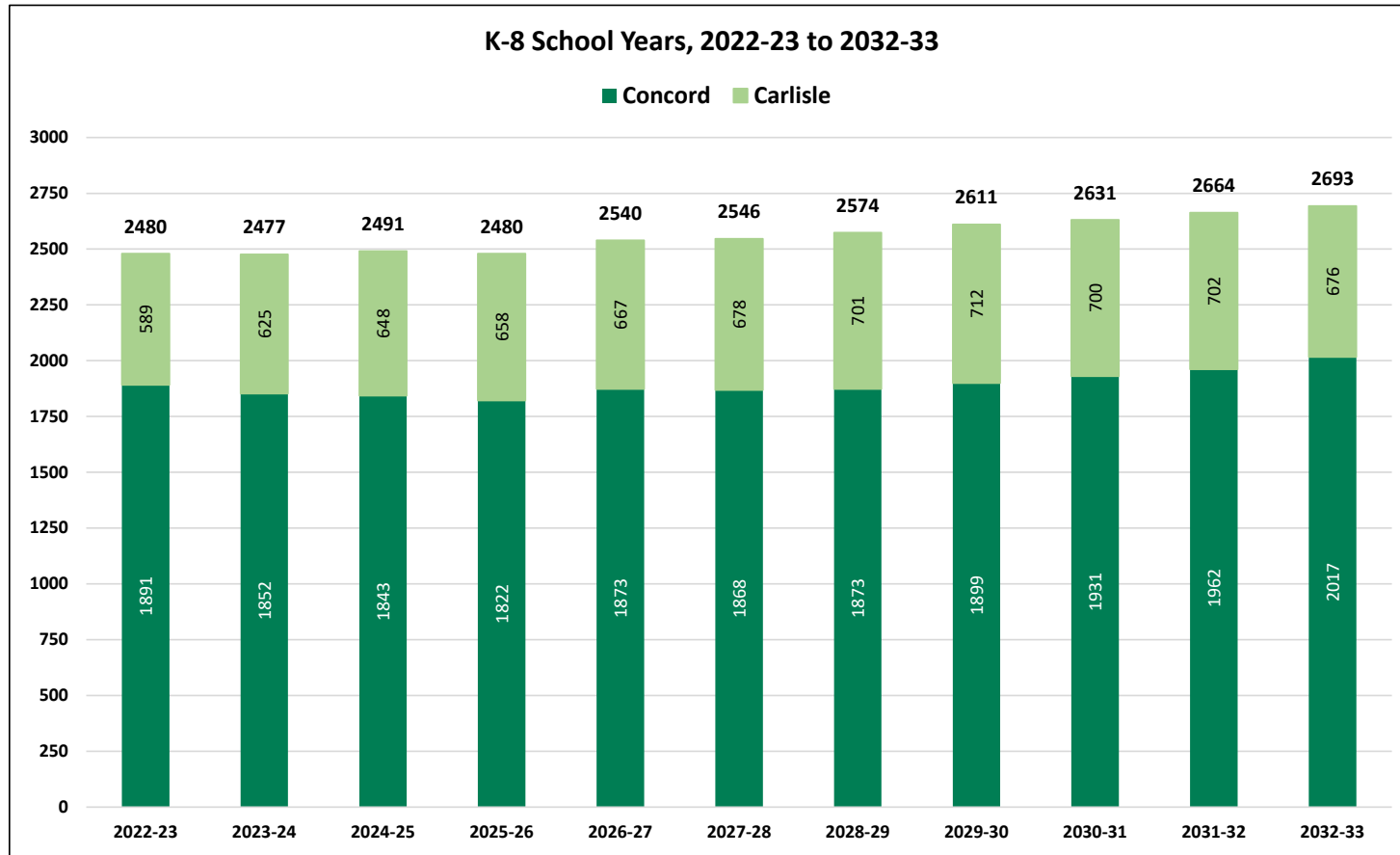
# Projected Enrollment

**K-12, School Years 2022-23 to 2032-33**





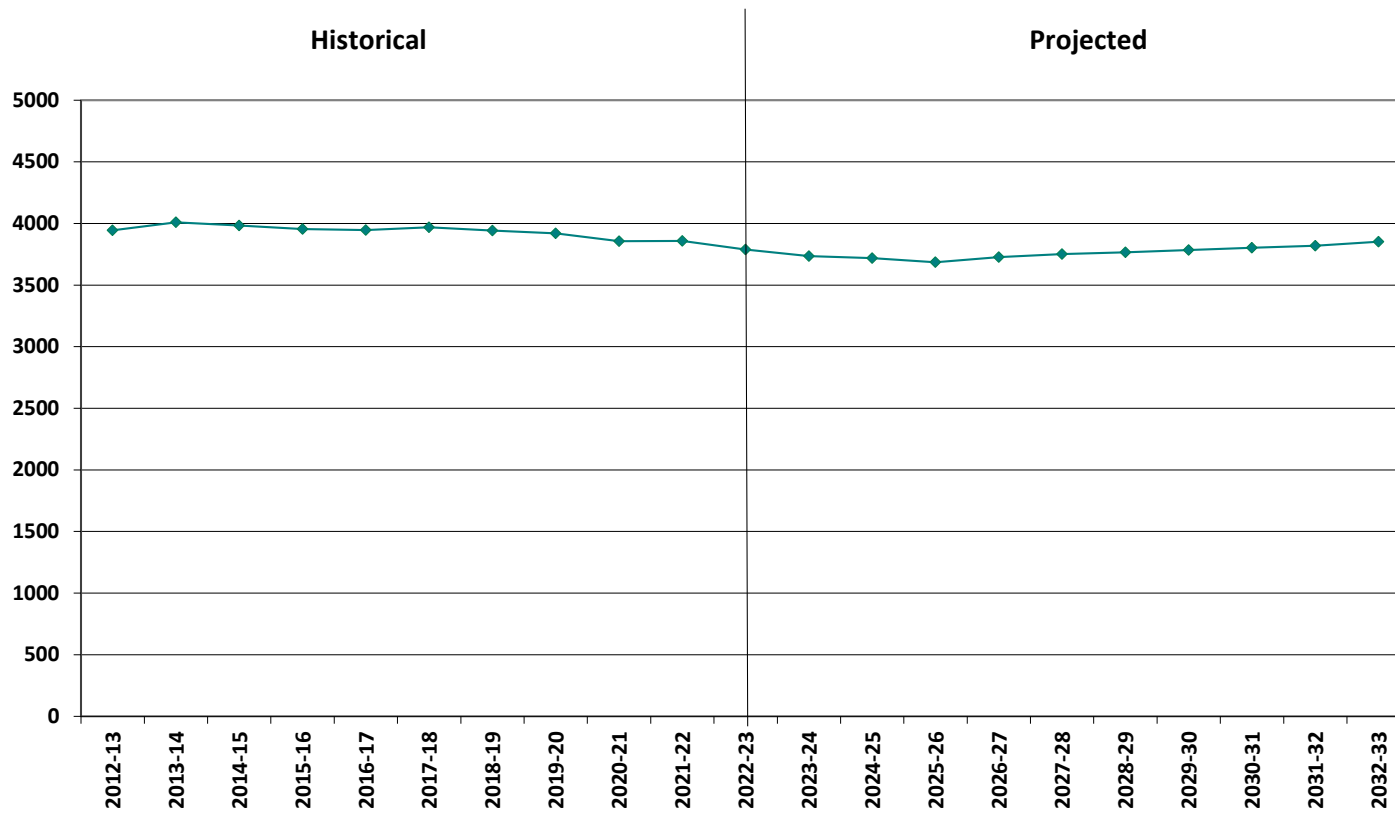
# Projected Enrollment By Town



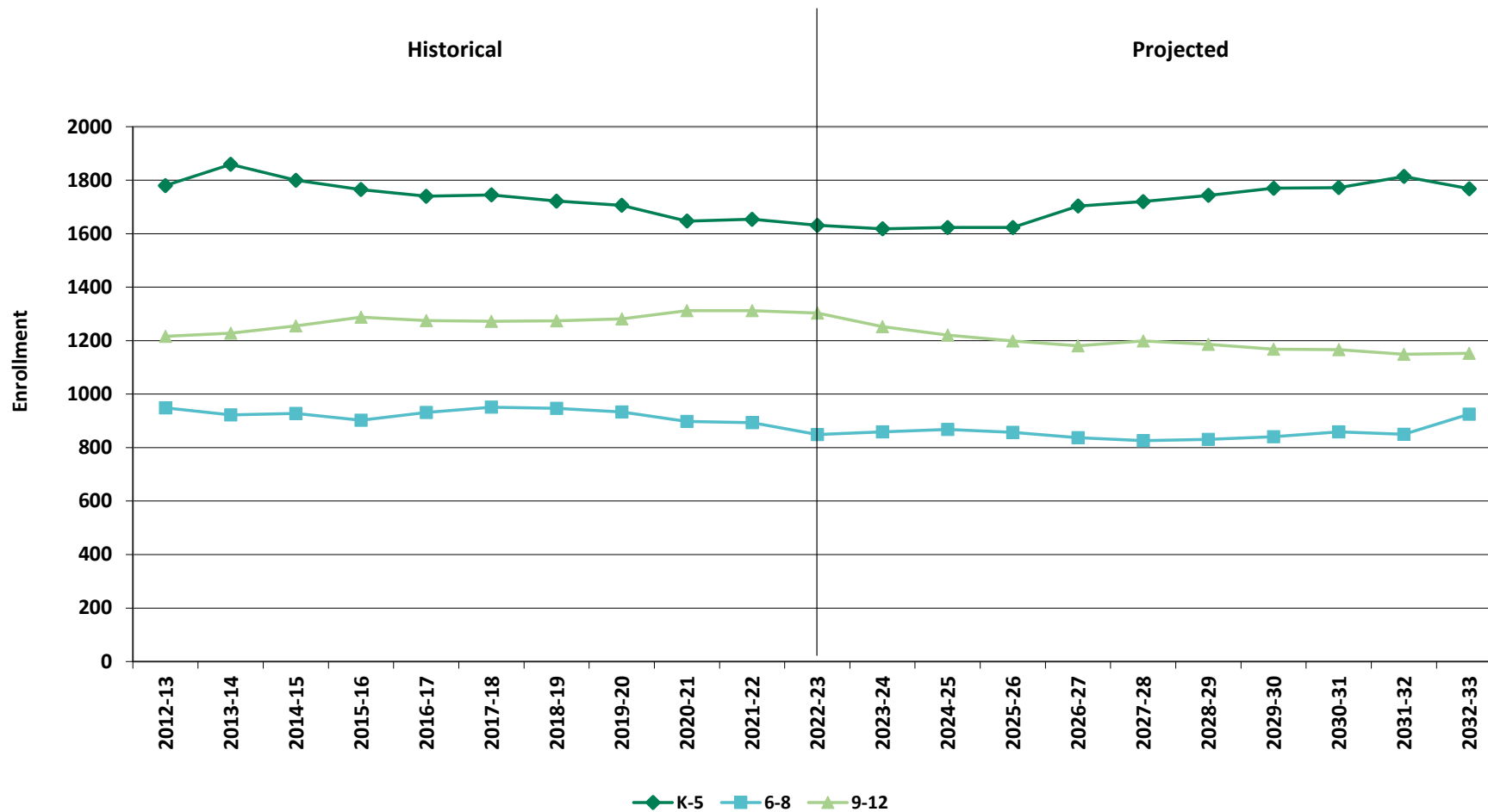
Town	2022-23	2023-24	2024-25	2025-26	2026-27	2027-28	2028-29	2029-30	2030-31	2031-32	2032-33
Concord	76%	75%	74%	73%	74%	73%	73%	73%	73%	74%	75%
Carlisle	24%	25%	26%	27%	26%	27%	27%	27%	27%	26%	25%

\* percentages rounded

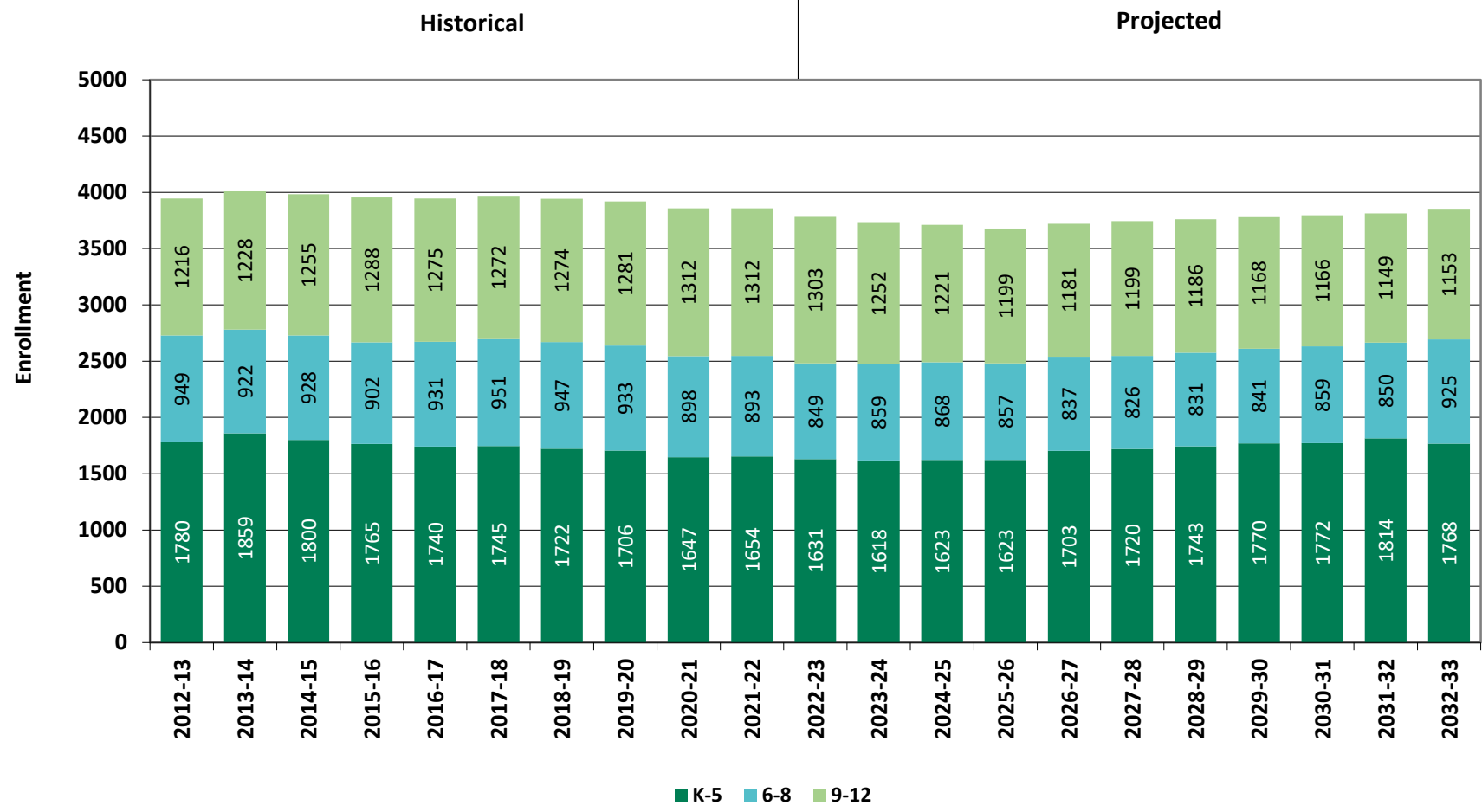
# Historical & Projected Enrollment



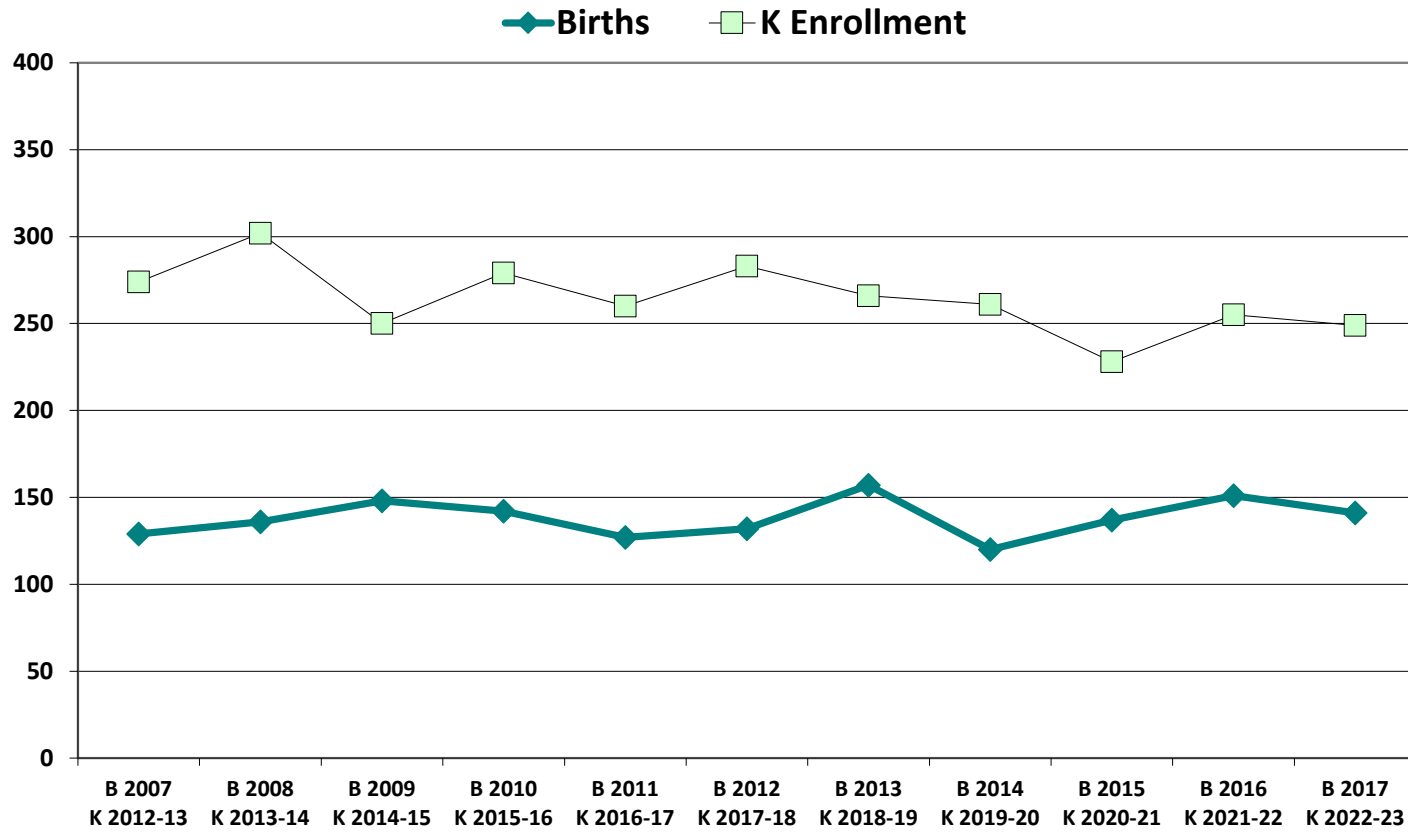
## Historical & Projected Enrollments in Grade Combinations



# Historical & Projected Enrollments in Grade Combinations



## Birth-to-Kindergarten Relationship



# Additional Information

Combined Building Permits Issued (Source: HUD)		
Year	Single-Family	Multi-Units
2012	43	102
2018	66	0
2019	38	2
2020	35	0
2021	127	0
2022	33 to date	0 to date

Enrollment History*		
Year	Career-Tech 9-12 Total	Non-Public 9-12 Total
2012-13	n/a	n/a
2018-19	n/a	n/a
2019-20	n/a	364
2020-21	n/a	303
2021-22	n/a	270
2022-23	35	211

Residents in Non-Public Independent and Parochial Schools (General Education)*														
Oct. 1 Enrollment	K	1	2	3	4	5	6	7	8	9	10	11	12	9-12 TOTAL
	0	0	0	0	0	0	0	0	0	54	55	35	67	211

9-12 Home-Schooled Students*	
2022	14

9-12 Residents in Charter or Magnet Schools, or Choiced-out*	
2022	< 10 **

9-12 Special Education Outplaced Students*	
2022	29

9-12 Tuitioned-In, Choiced-In, & Other Non-Residents*	
2022	22

\*The above data were provided by the District, with the exception of building permit data (provided by HUD).

"n/a" signifies that information was not provided by District.

\*\* < 10 Not reported, to protect subgroups with fewer than 10 students.

## New England's PK-12 Enrollment Trends

From 2020 to 2030, the US Department of Education anticipates changes in PK-12 enrollment of -2.4% in the South, -6.5% in the West, -3.8% in the Midwest, -6.2% in the Northeast, and a total of -4.3% nationwide.

State	Fall 2020 PK - 12	Fall 2030 Projected	PK-12 Decline	% Change 2020-2030
CT	509,058	475,600	-33,458	-6.6%
ME	172,455	161,800	-10,655	-6.2%
MA	921,712	879,900	-41,812	-4.5%
NH	169,027	144,600	-24,427	-14.5%
RI	139,184	130,200	-8,984	-6.5%
VT	82,401	74,600	-7,801	-9.5%

**Source:** U.S. Department of Education, National Center for Education Statistics, *Enrollment In Public Schools fall 1990 to fall 2030*, Table 203.20, March 2022.

Although most New England Districts are seeing a decline in the number of births, NESDEC's experience indicates that the impact on enrollment varies from District to District. Almost half of New England Districts have been growing in PK-12 enrollment, and a similar number are declining (often in rural areas), with the other Districts remaining stable.

# Reliability and Use of this Document

## PROJECTION METHODOLOGY

Cohort component (survival) technique is a frequently used method of preparing enrollment forecasts. NESDEC uses this method, but modifies it in order to move away from forecasts that are wholly computer- or formula-driven. Such modification permits the incorporation of important, current district-specific information into the generation of enrollment forecasts (such as in/out-migration of students, resident births, HUD-reported building permits, etc.). Percentages are calculated from the historical enrollment data to determine a reliable percentage of increase or decrease in enrollment between any two grades. For example, if 100 students enrolled in Grade 1 in 2018-19 increased to 104 students in Grade 2 in 2019-20, the percentage of survival would be 104%, or a ratio of 1.04. Ratios are calculated between each pair of grades or years in school over several recent years.

After study and analysis of the historical ratios, and based upon a reasonable set of assumptions regarding births, migration rates, retention rates, etc., ratios most indicative of future growth patterns are determined for each pair of grades. The ratios thus selected are applied to the present enrollment statistics to project into future years. The ratios are the key factors in the reliability of the projections, assuming validity of the data at the starting point.

## RELIABILITY OF ENROLLMENT PROJECTIONS

Projections can serve as useful guides to school administrators for educational planning. Enrollment projections are more reliable in Years #1-4 in the future and less reliable in the "out-years." Projections six to ten years out may serve as a guide to future enrollments and are useful for planning purposes, but they should be viewed as subject to change given the likelihood of potential shifts in underlying assumptions/trends, such as student migration, births as they relate to Kindergarten enrollment, and other factors.

Projections that are based upon **the children who already are in the district** (the current K-12 population only) will be the most reliable. The second level of reliability will be for those children already **born into the community but not yet old enough to be in school**. The least reliable category is the group for which an estimate must be made **to predict the number of births**, thereby adding additional uncertainty. See these three multi-colored groupings on the "Projected Enrollment" tab.

Annual updates allow for early identification of recent changes in historical trends. When the actual enrollment in a grade is significantly different (higher or lower) from the projected number, it is important (yet difficult) to determine whether this is a one-year aberration or whether a new trend may have begun. **In light of this possibility, NESDEC urges all school districts to have updated enrollment forecasts developed by NESDEC each October.** This service is available at no cost to affiliated school districts.

## USING THIS INFORMATION ELECTRONICALLY

If you would like to extract the information contained in this report for your own documents or presentations, you can use screenshots, which can be inserted into PowerPoint slides, Word documents, etc. Because screenshots create graphics, the image is not editable. Please feel free to contact us if you need assistance in this matter, by phone (508-481-9444) or by email ([ep@nesdec.org](mailto:ep@nesdec.org)).