

Scan the QR Code To Ask A Question.

Type your question on the Padlet
and we will address it at the end.



LR



Lumberton ISD Safety & Security Town Hall Meeting



LR

Welcome – Dr. Tony Tipton – Superintendent

Topics of Discussion for the Town Hall Meeting

- **Standard Response Protocol**
- **Threat Assessment**
- **Bullying Response Protocol**
- **Standard Reunification Method**
- **Access Denial**
- **Addressing TEA Safety/Security Mandates**
- **Communication**
- **Comprehensive School Safety Reporting Program**
 - **Crime Stoppers**
- **Safety/Security Summit**
 - **Evening Follow Up with Parents**

Three Year Safety & Security Audit



Partnerships – It Takes All Of Us Working Together.



Safety & Security Comprehensive Reporting System



- C** - Comprehensive - 360 degree program
- O** - Ongoing - no finish line
- V** - Verified - human touch verification
- E** - Evaluated - routinely ensured
- R** - Reporting
- S** - System



1. Standard Response Protocol

SRP-2021

Standard Response Protocol



HOLD



SECURE



LOCKDOWN



EVACUATE



SHELTER



2. Threat Assessment



School Behavioral Threat Assessment

- **Pathway to violence**
- **Evidence based**
- **Proactive = Prevention**
- **S.B. 11**

Threat Assessment Involves:

- **Identifying**
- **Inquiring**
- **Assessing**
- **Managing**

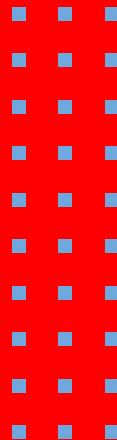
LISD District Threat Assessment Team

- **Multi-disciplinary**
- **Formal training**
- **Trains staff**
- **Trains students**



3. Reunification

What is it and how does it look?



Standard Reunification Method

- Reunification = parents pick up their students in a formalized control release
- Likely to occur at a different location than the school student attends



Standard Reunification Method

A critical aspect of incident response is the accountable reunification of students with their parents or guardians.



Standard Reunification Method

Order:

- Event takes place on campus
- Students are evacuated
- Parents notified
- Parents arrive & identify themselves
- Students are reunified with parents
- Interviews and counseling as needed



LR

TEXAS  STATE[®]
TEXAS SCHOOL SAFETY CENTER



STANDARD[™]
REUNIFICATION METHOD



LR



WATCH FOR IT!

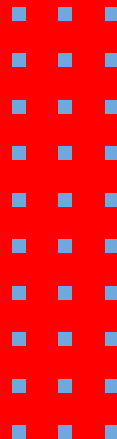
Reunification Tri-Fold
Coming Home With Your
Child/Children Soon!

LR



4. Access Denial

The Safety Of Students & Staff First.



In the event of a suspected or confirmed emergency:

All non-emergency personnel will be denied access to the campus by gates, cones, and, or people

- Parents
- Guardians
- Daycares
- LISD employees not involved in the emergency response
- Siblings





5. Addressing TEA's Safety & Security Mandates

TEA Mandate

-On June 30, 2022 Commissioner Mike Morath provided guidance related to actions school districts must take prior to the start of the new school year that will make their campuses more secure:

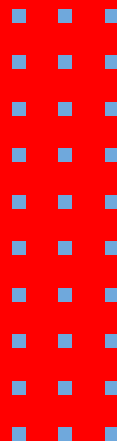
- Conduct a Summer Targeted Partial Safety Audit
- Conduct an Exterior Door Safety Audit
- Convene the LEA's Safety and Security Committee to review:
 - the multi-hazard emergency operations plan (EOP), and
 - as a component of the EOP, the LEA's active threat plan
- Ensure all campus staff (including substitutes) are trained on their specific LEA and campus safety procedures
- Schedule all mandatory drills for the school year
- Ensure all threat assessment team members are trained
- Review and, if necessary, update access control procedures
 - For the new school year, access control procedures must include exterior door sweeps (ensuring doors are closed and locked) at every instructional facility at least once each week while instruction is being conducted.





6. Communication

In A Crisis Situation, What You Can Expect From LISD.





**Education is our
business, but safety is
our priority"**

Dr. Tony Tipton





**LISD WANTS TO
COMMUNICATE
WITH YOU!**



#stayinformed



District/Campus Communication, Emergency Information, School Closing Information & Transportation Communication



Follow us on
Facebook
Lumberton ISD



Follow us on
Twitter
@LISDRaiders



Follow us on LinkedIn
Lumberton
Independent
School District



Download The
Remind App



Txt Msgs Thru School
Messenger
- Txt Y to 67587

**In an emergency LISD will send
notifications in the following order:**

- Notification to all LISD Staff
- Notification to Parents through
School Messenger
- Post on District Website
- Post on Social Media



email Through
School Messenger



Voice Recorded
Calls
Through School
Messenger



Check the District
website newsfeed
www.lumbertonisd.org



Subscribe to our
YouTube Channel -
Lumberton Independent
School District



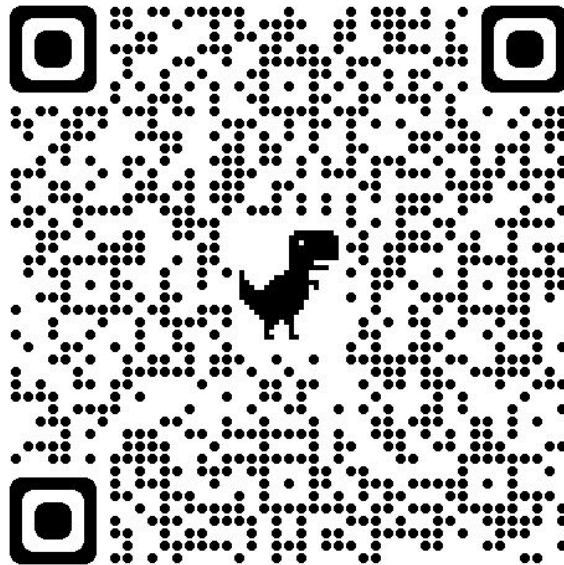
Download Ride 360 for
transportation tracking
& communication.

**All contact information
must be kept current in Frontline. Contact your child's campus with any changes.**



District Web Page Dedicated to Safety & Security

<https://tinyurl.com/LISDKEEPRAIDERSSAFE>



LR

7. Comprehensive School Safety Reporting Program

LISD Report Card on School Safety!

See Something... Say Something!



- Anonymous Alerts
- iWatch Texas
- School Safety Report Card
- Crime Stoppers



Anonymous Alerts



iWatch Texas



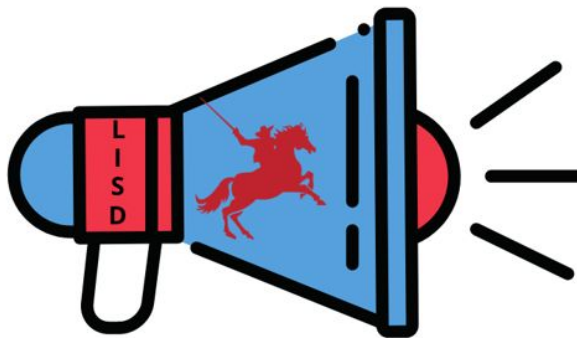
School Safety Report Card



Crime Stoppers

Comprehensive School Safety Reporting System





**In an emergency
LISD will send notifications
in the following order:**

- **Notification to all LISD Staff**
- **Notification to Parents through School Messenger**
 - **Voice Message**
 - **Email Message**
 - **Text Message**
- **Post on District Website**
- **Post on Social Media**



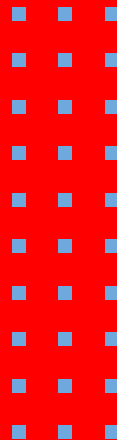
RAIDERS TODAY. LEADERS TOMORROW.

LR



8. Crime Stoppers

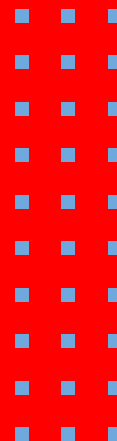
Jeremy Raley





9. LISD Safety/Security Summit

Coming June 2023!



FIRST-ANNUAL SCHOOL SAFETY & SECURITY SUMMIT

for Texas

SAVE THE DATE!

Wednesday, June 21, 2023 - Lumberton ISD

**TITLE SPONSORSHIP & VENDOR
BOOTHS AVAILABLE**

**CALLS FOR PRESENTATIONS
GO OUT JANUARY 2023**



School Safety & Mental Health Experts

Presentations & keynotes from school safety experts, law enforcement, governmental agencies, school administrators, mental health consultants, counselors, medical professionals, & more.



Security Demonstrations

See demonstrations from various safety/security vendors with product samples. Participate in expert roundtable & panel discussions. Test our MILO Use-of-Force Simulator with Law Enforcement students.



Elected Officials

Visit with local, regional, & state elected officials about ongoing safety/security concerns that affect schools in Texas.

*Free Attendance
Registration Required*



Who should attend?

**Superintendents, Principals,
Counselors, School Board
Members, First Responders,
Elected Officials, Safety Experts**

103 S. LHS Drive
Lumberton, TX 77657
409-923-7580
www.lumbertonisd.org

SPONSORSHIP & PRESENTER INFO:
MAJOHNSON@LUMBERTONISD.ORG
409-923-7580 EXT 7578

Scan QR Code to be added to our email list for updates



LR

Questions????

LR

This is a slide title

- Here you have a list of items
- And some text
- But remember not to overload your slides with content

Your audience will listen to you or read the content, but won't do both.

Big concept

Bring the attention of your audience over a key concept using icons or illustrations



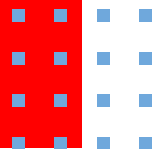
You can also split your content

White

Is the color of milk and fresh snow, the color produced by the combination of all the colors of the visible spectrum.

Black

Is the color of ebony and of outer space. It has been the symbolic color of elegance, solemnity and authority.



In two or three columns

Yellow

Is the color of gold, butter and ripe lemons. In the spectrum of visible light, yellow is found between green and orange.

Blue

Is the colour of the clear sky and the deep sea. It is located between violet and green on the optical spectrum.

Red

Is the color of blood, and because of this it has historically been associated with sacrifice, danger and courage.

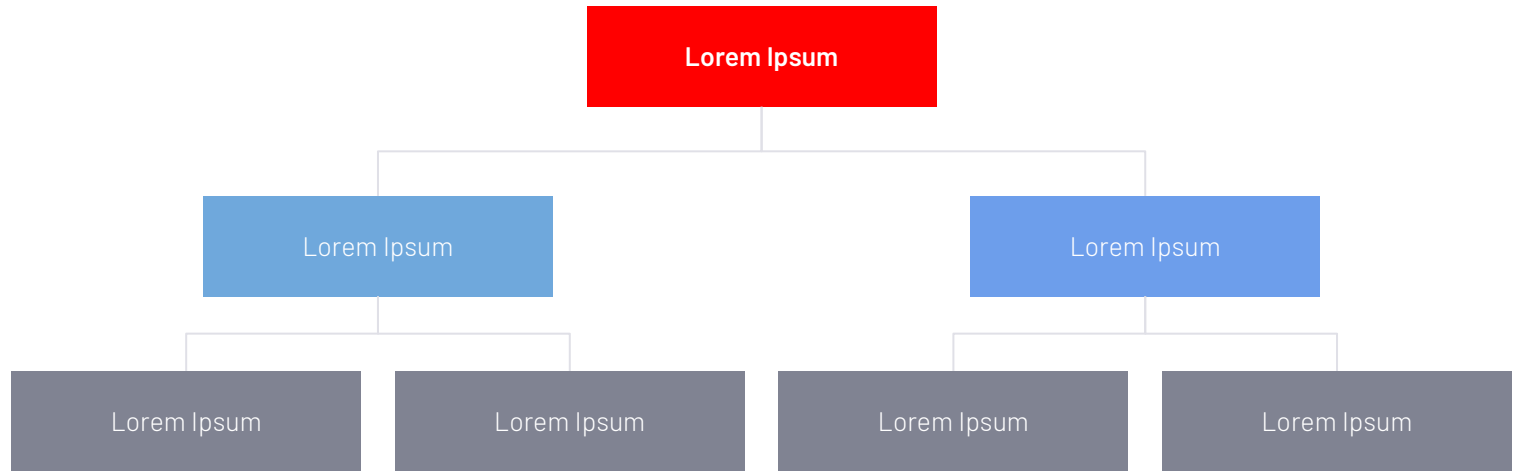
A picture is worth a thousand words

A complex idea can be conveyed with just a single still image, namely making it possible to absorb large amounts of data quickly.



**Want big impact?
Use big image.**

Use diagrams to explain your ideas



And tables to compare data

	A	B	C
Yellow	10	20	7
Blue	30	15	10
Orange	5	24	16



our office



89,526,124

Whoa! That's a big number, aren't you proud?



That's a lot of money

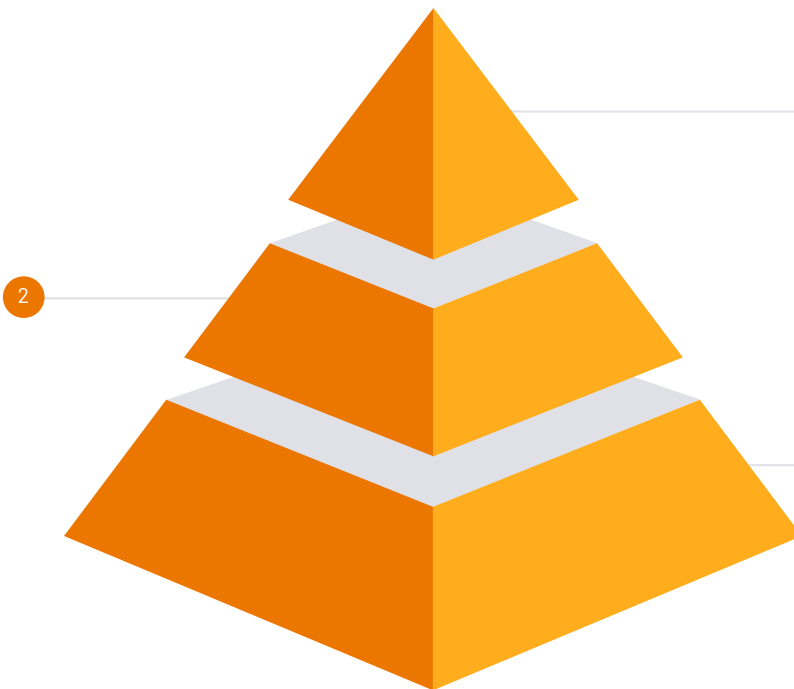
And a lot of users

Total success!

Our process is easy

Vestibulum congue tempus

Lorem ipsum dolor sit amet, consectetur adipiscing elit, sed do eiusmod tempor. Donec facilisis lacus eget mauris.



Vestibulum congue tempus

Lorem ipsum dolor sit amet, consectetur adipiscing elit, sed do eiusmod tempor. Donec facilisis lacus eget mauris.

Vestibulum congue tempus

Lorem ipsum dolor sit amet, consectetur adipiscing elit, sed do eiusmod tempor. Donec facilisis lacus eget mauris.

Let's review some concepts

Yellow

Is the color of gold, butter and ripe lemons. In the spectrum of visible light, yellow is found between green and orange.

Blue

Is the colour of the clear sky and the deep sea. It is located between violet and green on the optical spectrum.

Red

Is the color of blood, and because of this it has historically been associated with sacrifice, danger and courage.

Yellow

Is the color of gold, butter and ripe lemons. In the spectrum of visible light, yellow is found between green and orange.

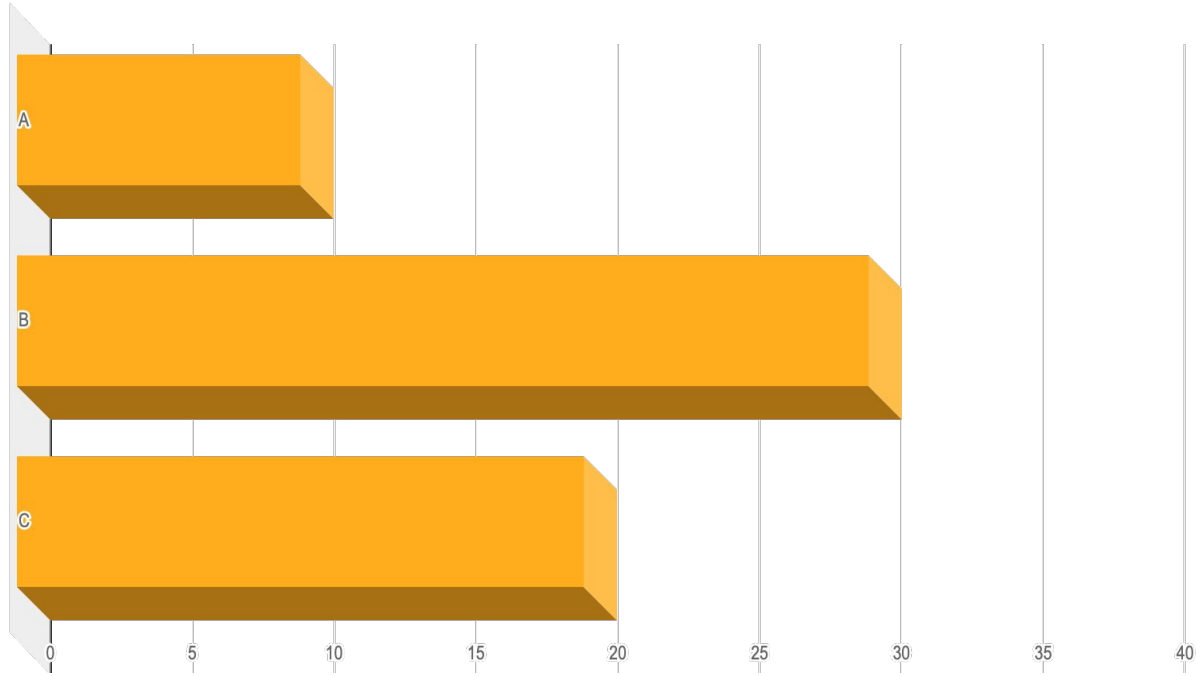
Blue

Is the colour of the clear sky and the deep sea. It is located between violet and green on the optical spectrum.

Red

Is the color of blood, and because of this it has historically been associated with sacrifice, danger and courage.

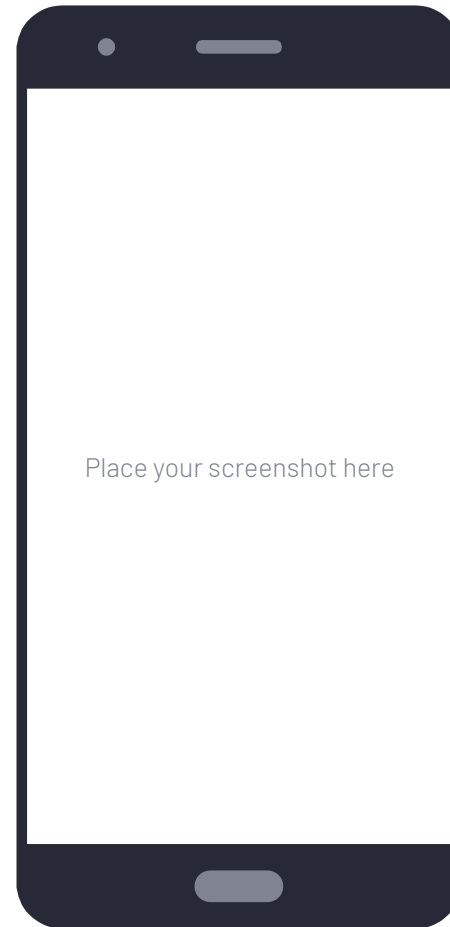




You can insert
graphs from Excel

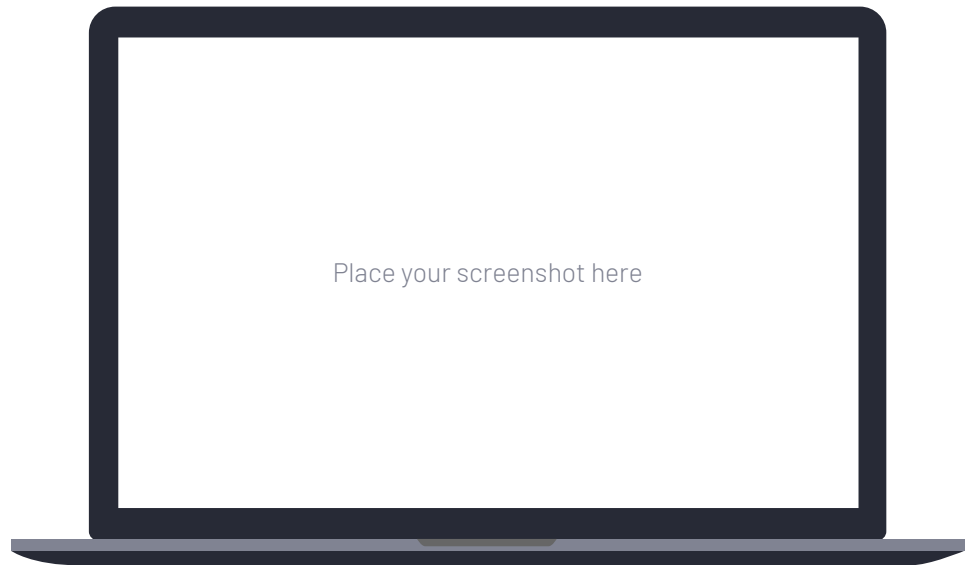
Mobile project

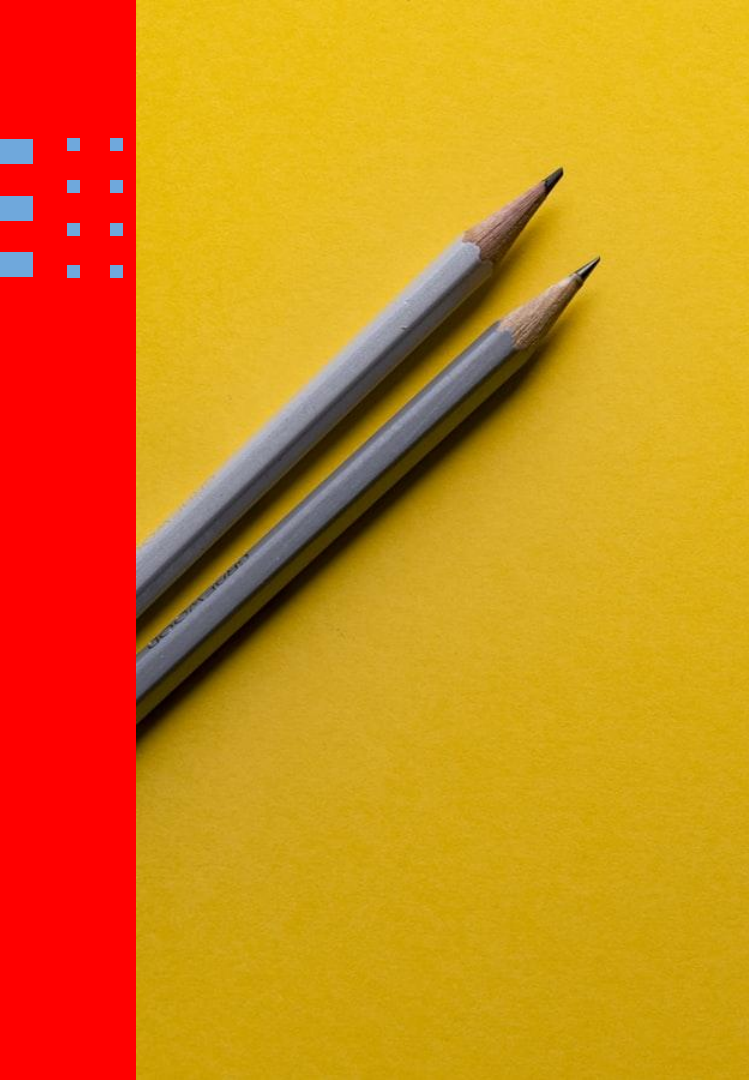
Show and explain your web, app or software projects using these gadget templates.



Desktop project

Show and explain your web, app or software projects using these gadget templates.





Thanks!

Any questions?

You can find me at:

- @username
- user@mail.me

Credits

Special thanks to all the people who made and released these awesome resources for free:

- Presentation template by SlidesCarnival
- Photographs by Unsplash

Presentation design

This presentation uses the following typographies:

- Titles: Barlow Semibold
- Body copy: Barlow Light

Download for free at:

<https://www.fontsquirrel.com/fonts/barlow>

You don't need to keep this slide in your presentation. It's only here to serve you as a design guide if you need to create new slides or download the fonts to edit the presentation in PowerPoint®





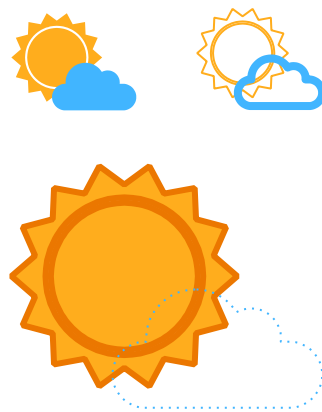
SlidesCarnival icons are editable shapes.

This means that you can:

- Resize them without losing quality.
- Change fill color and opacity.
- Change line color, width and style.

Isn't that nice? :)

Examples:



Find more icons at
slidescarnival.com/extra-free-resources-icons-and-maps

Diagrams and infographics





You can also use any emoji as an icon!
And of course it resizes without losing quality.

How? Follow Google instructions

<https://twitter.com/googledocs/status/730087240156643328>



many more...



Free templates for all your presentation needs

For PowerPoint and
Google Slides

100% free for personal
or commercial use

Ready to use,
professional and
customizable

Blow your audience
away with attractive
visuals

