



Scarborough Conservation Open Space Plan

OPEN SPACE AD-HOC COMMITTEE
MEETING 1
05/07/2024

AGENDA

- 1.Introductions
- 2.Project Overview
- 3.Existing Open Space Land
- 4.What Qualifies as Open Space?
- 5.Approach: Data + Community Values
- 6.Existing Conditions Data
- 7.Community Engagement Overview

INTRODUCTIONS

TOWN STAFF

Autumn Speer, Planning Director

Jami Fitch, Sustainability Manager

Emerson Goodrich, Sustainability Fellow

CONSULTANTS

Jessica Kimball, Project Manager

Judy Colby-George, GIS Specialist

Madeline Tripp, Support Staff

Mindee Goodrum, Natural Resources Specialist

COMMITTEE

Liam Erikson, Coastal Waters and Harbors Advisory Committee

Patricia Brigham, Community Services Advisory Board

Maggie Vishneau, Conservation Commission

Robyn Saunders, Long Range Planning Committee

Doug Williams, Parks & Conservation Land Board

Mike Kane, Scarborough Fish and Game

Andrew Mackie, Scarborough Land Trust

Crescie Maurer, Scarborough Land Trust, Marsh Committee

Daryen Granata, Shellfish Committee

Karin Shupe, Town Council

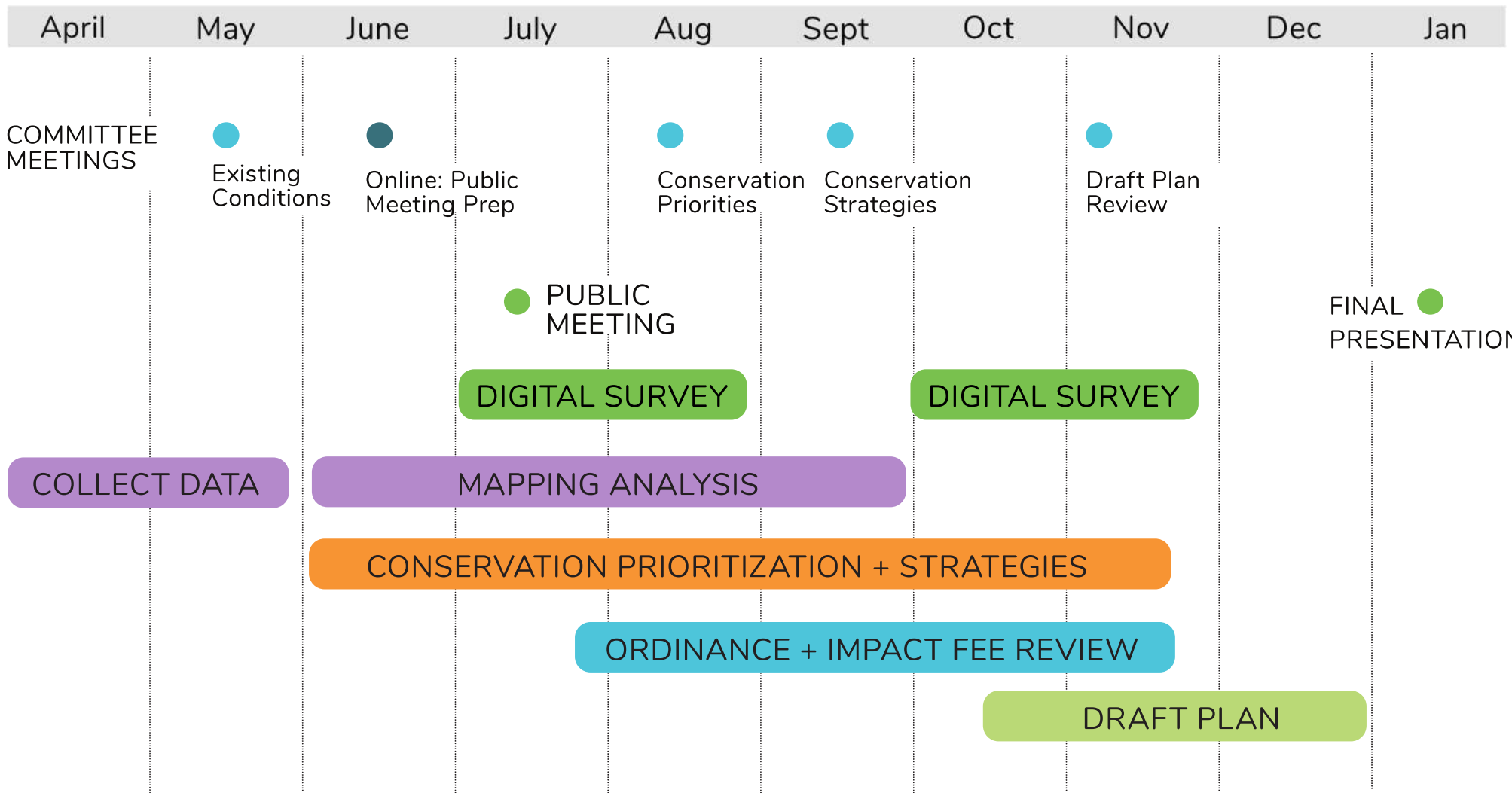
VIEWSHED

PLAN GOALS

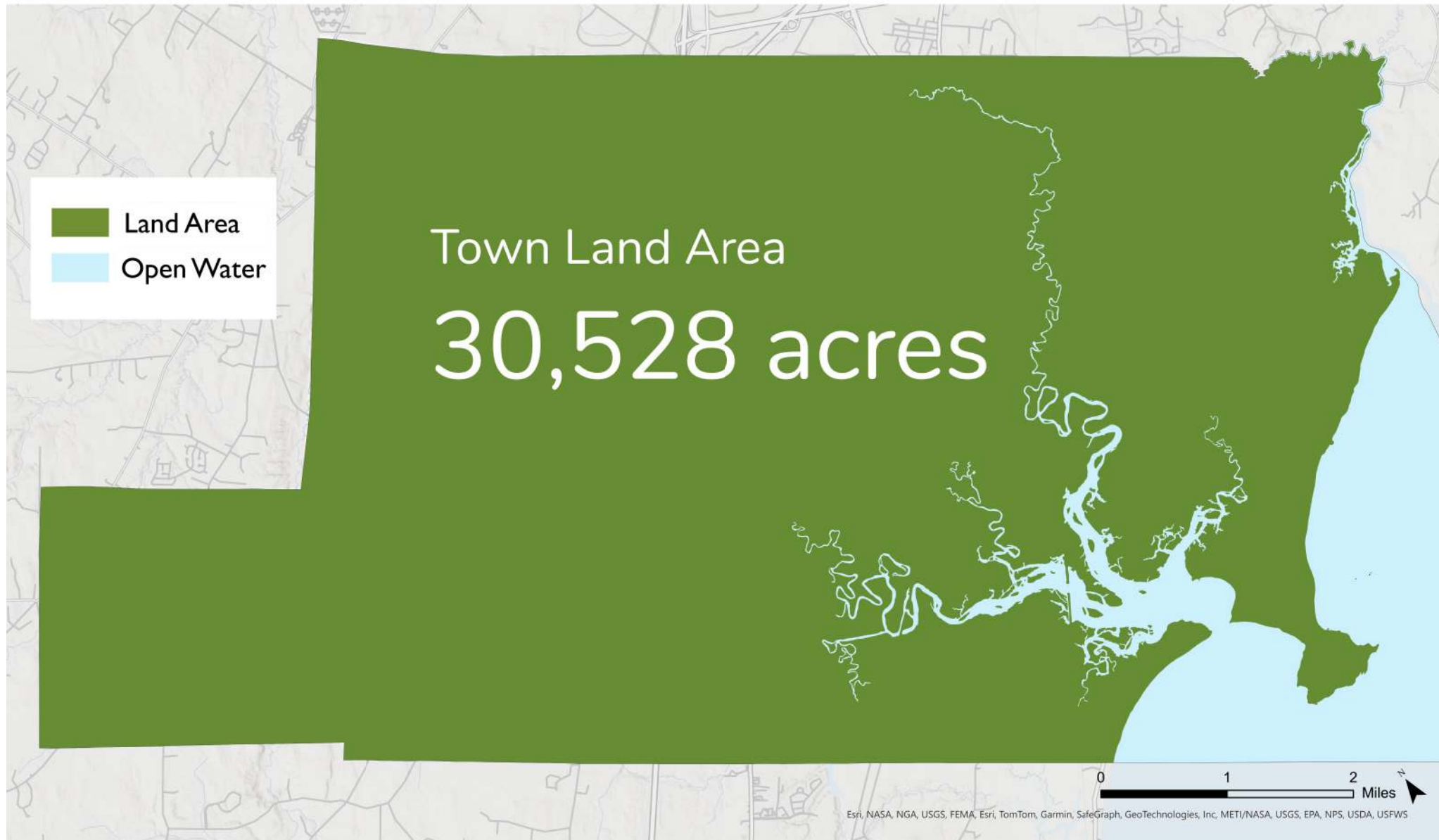
- Comprehensive inventory of open space resources
- Outline strategies for achieving the Town's 30x30 goal (30% by 2030)
- Identify the highest priority areas for conservation
- Provide strategies to expand the conservation of open space
- Recommend potential ordinance improvements + impact fee structure
- Guide capital investments & funding opportunities

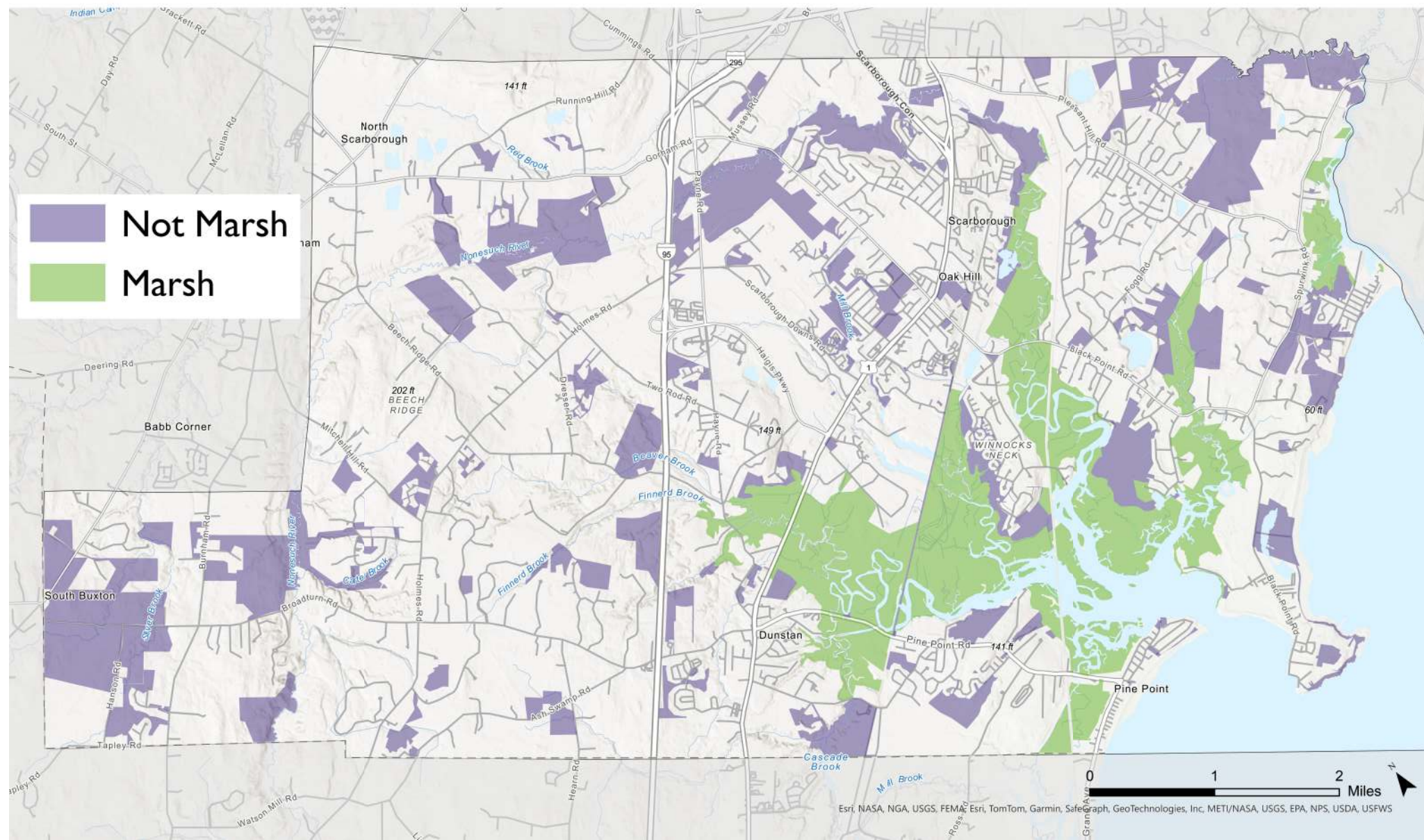
PROCESS DRIVEN BY: **Geospatial Data**
Community Engagement

SCHEDULE



How large is our community?

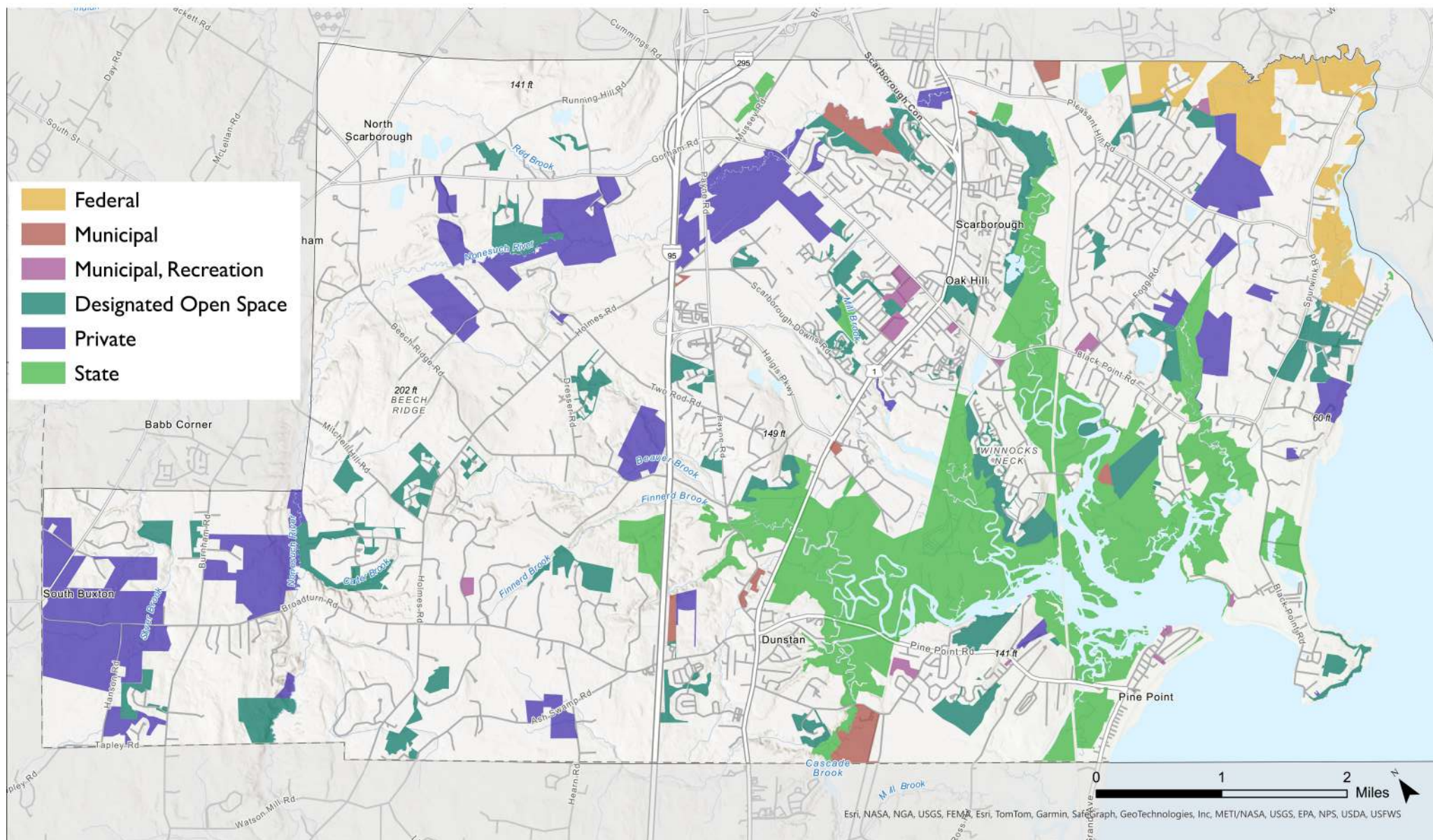


[illegible]

What land is currently conserved as open space?

TODAY	TOTAL	TOWN AREA	30,528 acres
		CONSERVED LAND	4,700 acres (15 %)
		CONSERVED MARSH	2,750 acres (9 %)
		TOTAL CONSERVED	7,500 acres (24 %)
2030		AREA NEEDED TO MEET 30x30 GOAL	1,700 acres (6 %)

What land is currently conserved as open space?



Does this all classify as open space?

FEDERAL

Land owned by the Federal government.

- **Rachel Carson Preserve**

527 acres

2% of town

7% of open space

MUNICIPAL

Undeveloped Town land. May or may not be protected.

- **Hunnewell Hill**

300 acres

1% of town

4% of open space

PRIVATE

Privately owned land (MFT / SLT).

- **Pleasant Hill Preserve**
- **Comstock Farm**

2,100 acres

7% of town

28% of open space

STATE

Land owned and managed by state agencies.

- **Scarborough Marsh**

3,000 acres

10% of town

40% of open space

RECREATION

Town recreation areas (parks, school fields, boat launches).

- **Blue Point Park**
- **SEDCO Field**

100 acres

<1% of town

1.5% of open space

DESIGNATED

Conserved land within subdivisions.

1,500 acres

5% of town

20% of open space

PRIVATE

VIEWSHED

Private Open Space

- Maine Farmland Trust
- Scarborough Land Trust
- Other/Unknown

Comstock Farm

Fuller Farm

Broadturn Farm

Warren Woods

Pleasant Hill Preserve



Esri, NASA, NGA, USGS, FEMA, Esri, TomTom, Garmin, SatGraph, GeoTechnologies, Inc, METI/NASA, USGS, EPA, NPS, USDA, USFWS

Does this all classify as open space?



Scarborough would like to strategically conserve an additional 1,700 acres by 2030.

What land area is left to expand open space?

Undeveloped Areas - Current Conserved Lands



= 6,000 acres

APPROACH

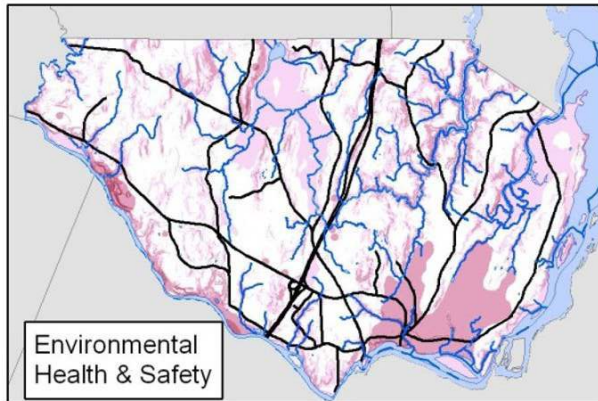
In order to establish strategies for conservation and prioritize areas in the community to focus conservation efforts, we will use:

Geospatial Data (mapping)

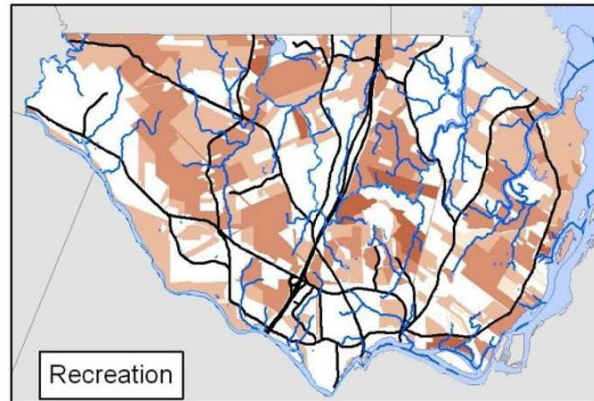
+

Community Values (outreach)

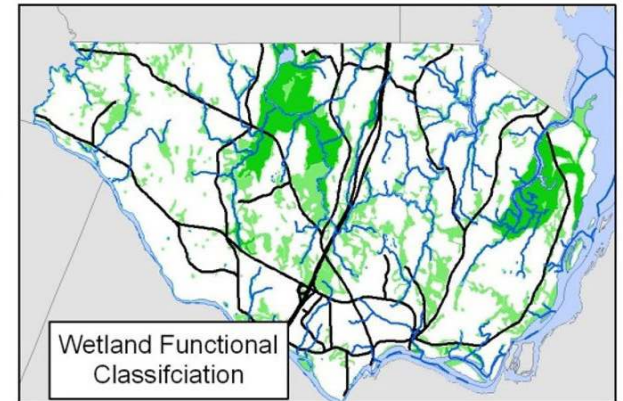
APPROACH: DATA + VALUES



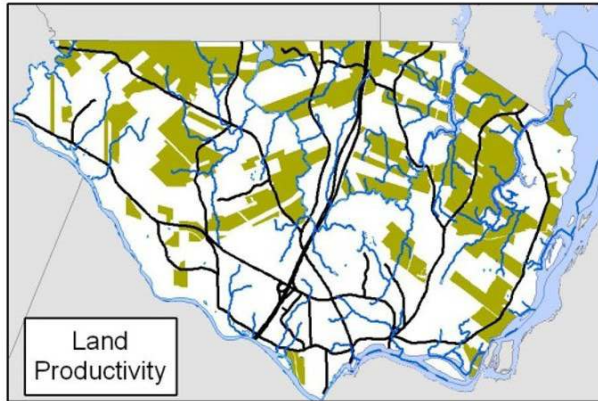
+



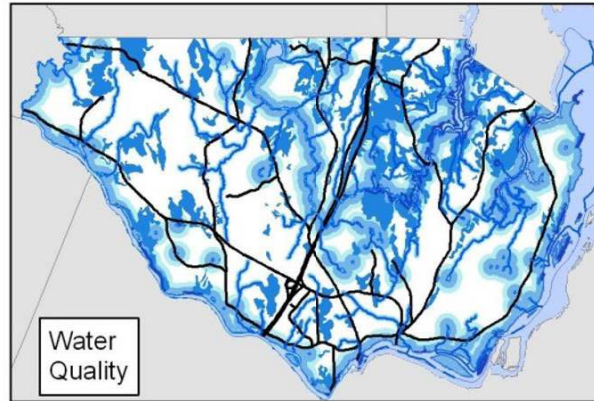
+



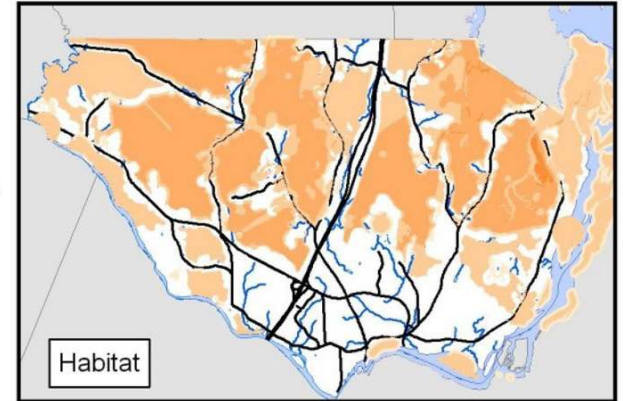
+



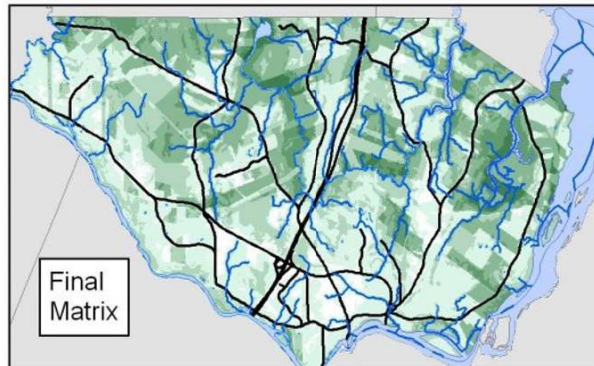
+



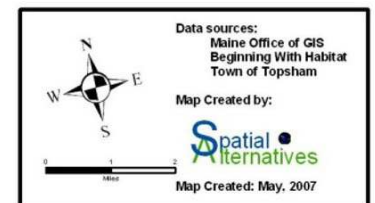
+



=



Example:
Topsham Natural Areas
Priority Mapping



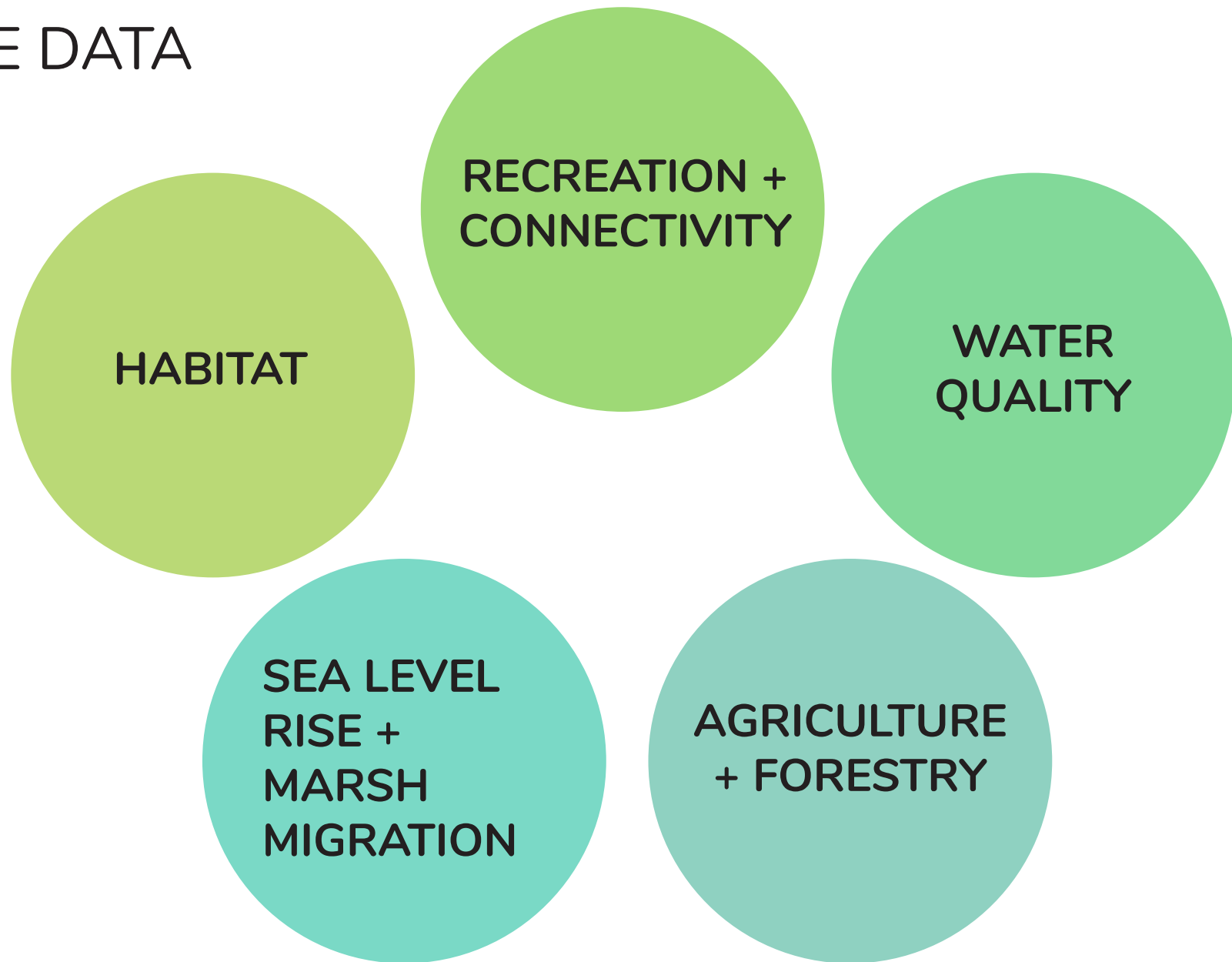
APPROACH: DATA + VALUES

The result will be a community-wide map identify the low / medium / high areas to prioritize for future land conservation.

The way we rate areas for potential conservation will be based on the values or interests identified by the community.

We start with the existing conditions data....

THE DATA



THE DATA

HABITAT

Ecosystems of Significance
Inland Wading Bird & Waterfowl Habitat
Tidal Wading Bird & Waterfowl Habitat
Deer Wintering Areas
Endangered, Threatened, or Species of Concern
Habitat Focus Areas
Significant Vernal Pools

SLR + MARSH MIGRATION

Current Marsh
Marsh Migration with:
• 1 ft of Sea Level Rise
• 2 ft of Sea Level Rise
• 3 ft of Sea Level Rise

RECREATION + CONNECTIVITY

Town-owned Parks
Public Access Conservation Land
Trails

WATER QUALITY

National Wetland Inventory
Streams & Rivers
Waterbodies
Great Ponds
250 ft Buffers

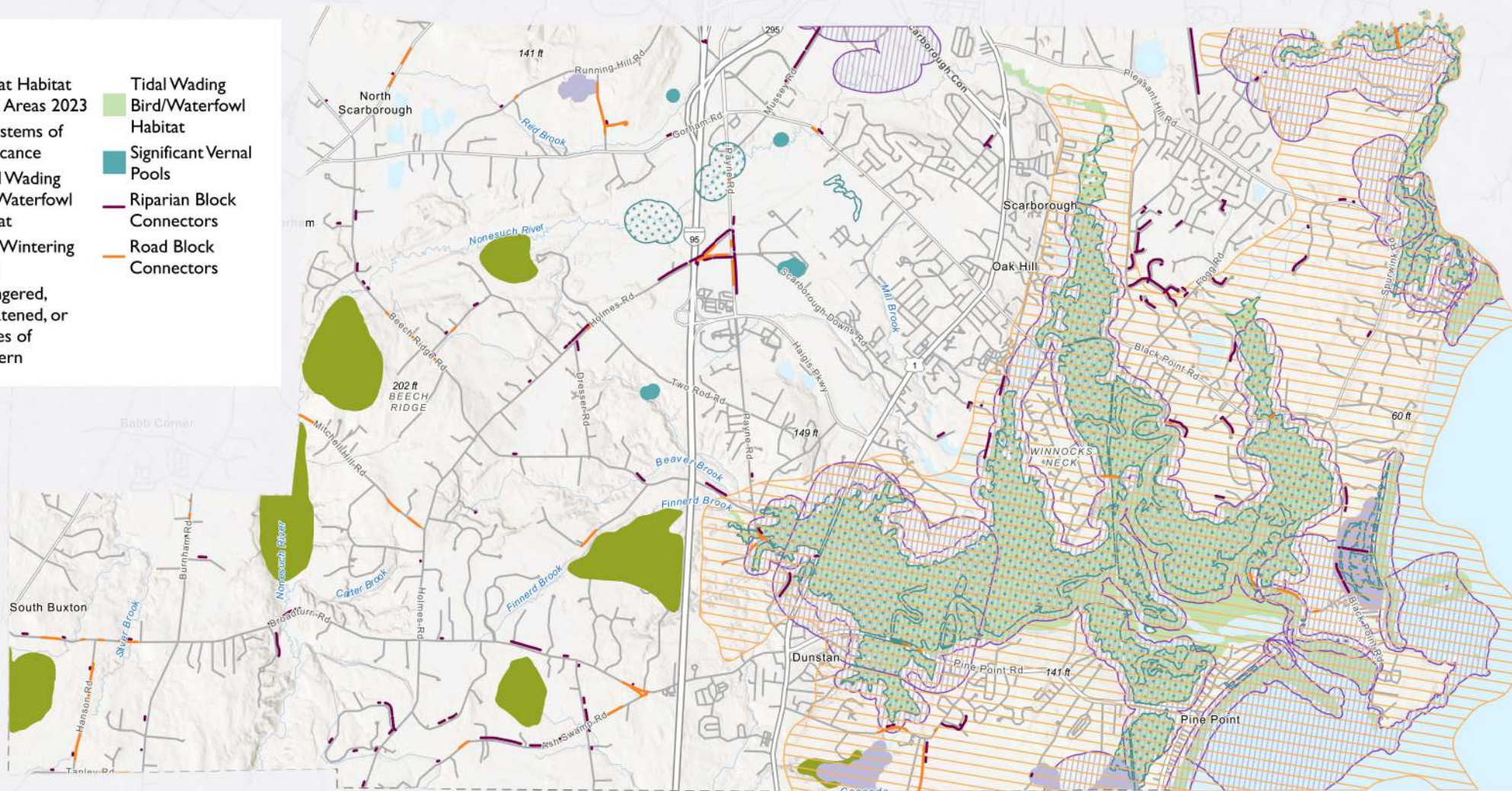
AGRICULTURE + FORESTRY

Tree Growth Parcels
Open Space Parcels
Farmland Parcels
Prime Farmland Soils

HABITAT

Legend

-  Habitat Habitat Focus Areas 2023
-  Ecosystems of Significance
-  Inland Wading Bird/Waterfowl Habitat
-  Deer Wintering Areas
-  Endangered, Threatened, or Species of Concern
-  Tidal Wading Bird/Waterfowl Habitat
-  Significant Vernal Pools
-  Riparian Block Connectors
-  Road Block Connectors



Esri, NASA, NGA, USGS, FEMA, Esri, TomTom, Garmin, SafeGraph, GeoTechnologies, Inc, METI/NASA, USGS, EPA, NPS, USDA, USFWS

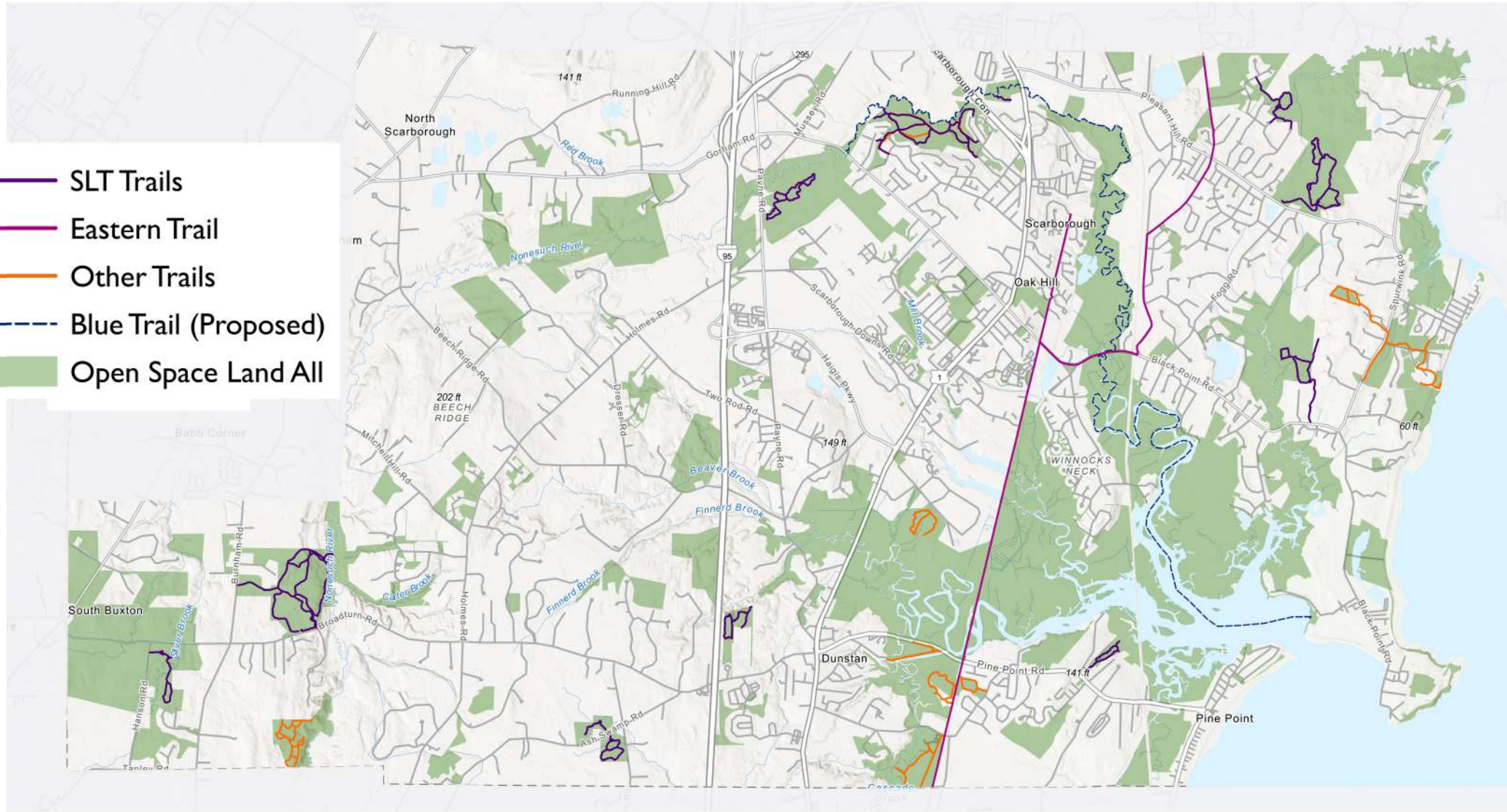
WATER RESOURCES / QUALITY



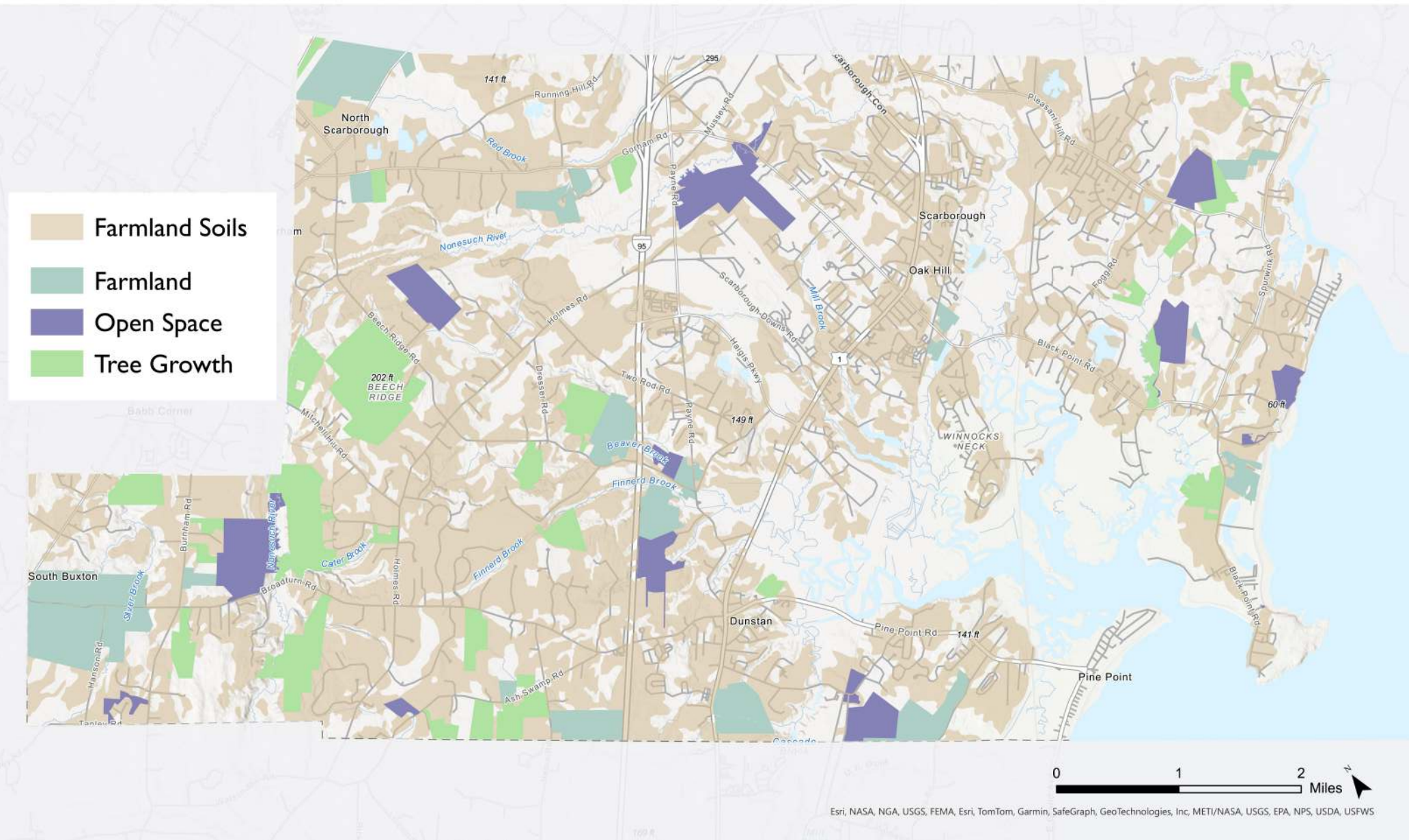
SEA LEVEL RISE + MARSH MIGRATION



RECREATION + CONNECTIVITY



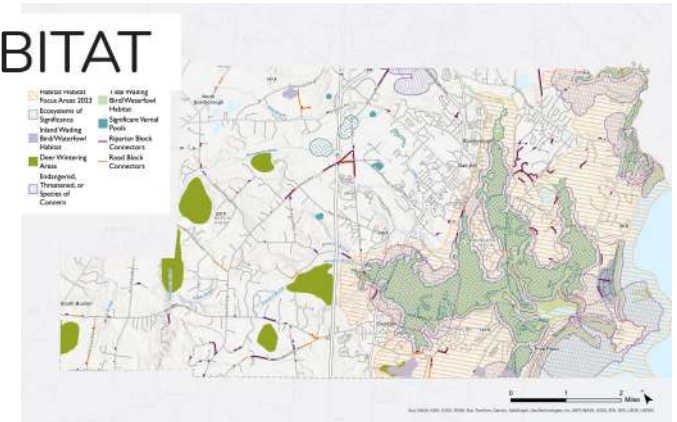
AGRICULTURE + FORESTRY



POTENTIAL MATRIX

high / medium / low value areas to
prioritize open space conservation

HABITAT



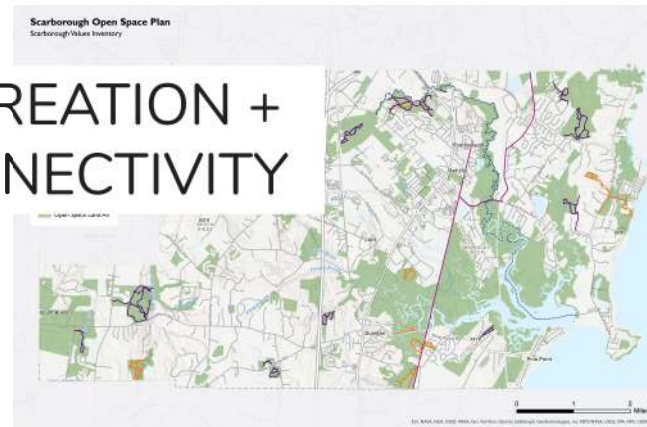
WATER QUALITY



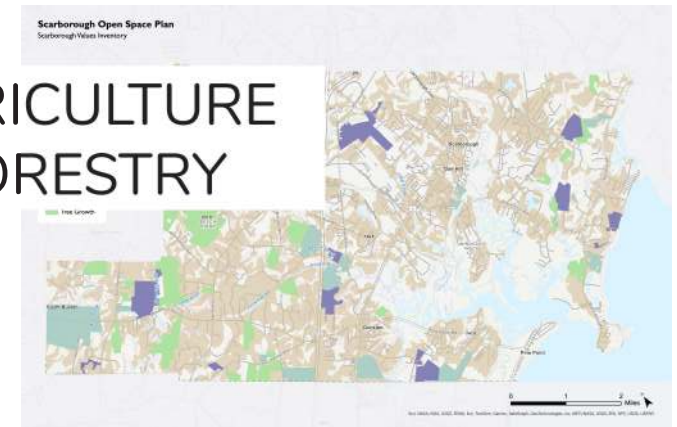
SLR + MARSH MIGRATION



RECREATION + CONNECTIVITY



AGRICULTURE + FORESTRY



PUBLIC ENGAGEMENT

What are the community's values?

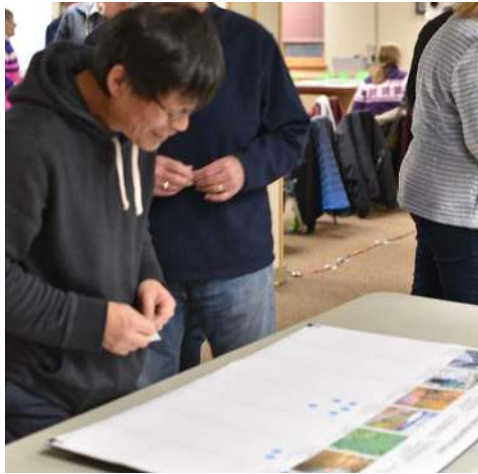
What do people want to prioritize most?

Are there specific areas, habitats, or connectivity efforts that should guide conservation strategies?



PUBLIC MEETING

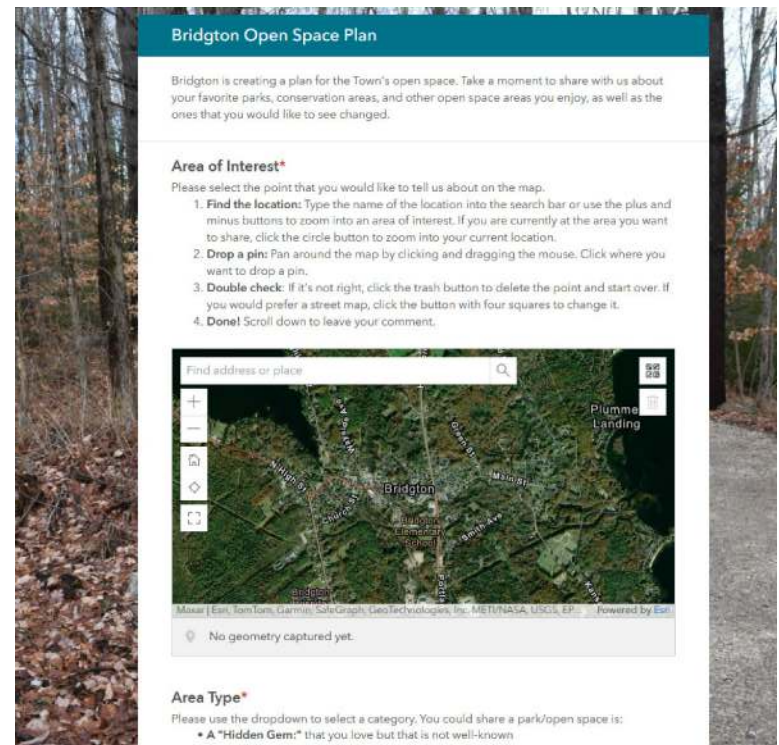
- July Forum Activities:
- Budget Exercise
 - Mapping Open Space



ONLINE OUTREACH

TWO ROUNDS OF DIGITAL FEEDBACK

- July/Aug: Community Survey & Digital Mapping
(to match community meeting)
- Sept/Oct: Feedback on Conservation Priorities Matrix



The screenshot shows a web-based digital mapping interface titled "Bridgton Open Space Plan". The page is framed by a background image of a forest path. The interface includes a teal header with the title, a paragraph explaining the purpose of the plan, and two main sections: "Area of Interest" and "Area Type".

Bridgton Open Space Plan

Bridgton is creating a plan for the Town's open space. Take a moment to share with us about your favorite parks, conservation areas, and other open space areas you enjoy, as well as the ones that you would like to see changed.

Area of Interest*

Please select the point that you would like to tell us about on the map.

1. **Find the location:** Type the name of the location into the search bar or use the plus and minus buttons to zoom into an area of interest. If you are currently at the area you want to share, click the circle button to zoom into your current location.
2. **Drop a pin:** Pan around the map by clicking and dragging the mouse. Click where you want to drop a pin.
3. **Double check:** If it's not right, click the trash button to delete the point and start over. If you would prefer a street map, click the button with four squares to change it.
4. **Done!** Scroll down to leave your comment.

The map shows a satellite view of Bridgton, Maine, with labels for "Bridgton", "Plumme Landing", and "Bridgton". A search bar at the top left of the map area says "Find address or place". Below the map, there is a status bar that says "No geometry captured yet." and a "Powered by Esri" logo.

Area Type*

Please use the dropdown to select a category. You could share a park/open space is:

- A "Hidden Gem:" that you love but that is not well-known

Further Discussion