

FACILITIES COMMITTEE MEETING #2 / 05.15.24

NKSD FACILITY COMMITTEE MEETING #2 / AGENDA



AGENDA

INTRODUCTION

UPDATES FROM FCM#1

CLARIFYING ROLES

2022 LEVY PROJECTS

FINANCIAL OVERVIEW

COMMUNICATIONS

PEARSON ELEMENTARY SCHOOL

OVERVIEW

INITIAL OBSERVATIONS

FEEDBACK

SUQUAMISH ELEMENTARY SCHOOL

OVERVIEW

INITIAL OBSERVATIONS

FEEDBACK

NEXT STEPS

NKSD FACILITY COMMITTEE MEETING #2 / ROLES



2022 LEVY PROJECTS /

NKSD FACILITY COMMITTEE MEETING #2 / DAVID WOLFLE ES

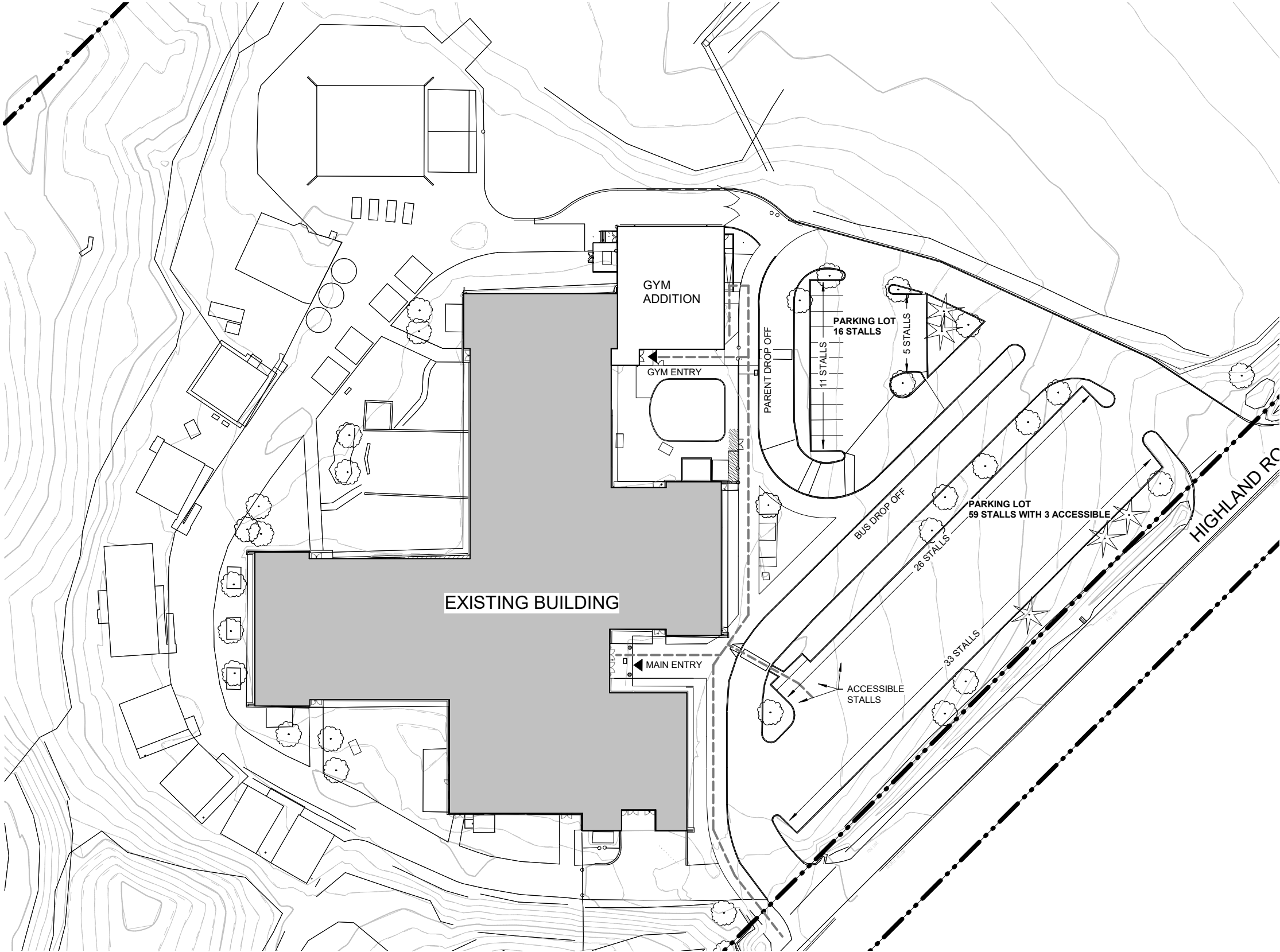
APPROX. 4200 SF

ORIGINALLY PLANNED FOR 3,600 SF
INCREASED SIZE IN ORDER TO BETTER
SUPPORT COMMUNITY USE

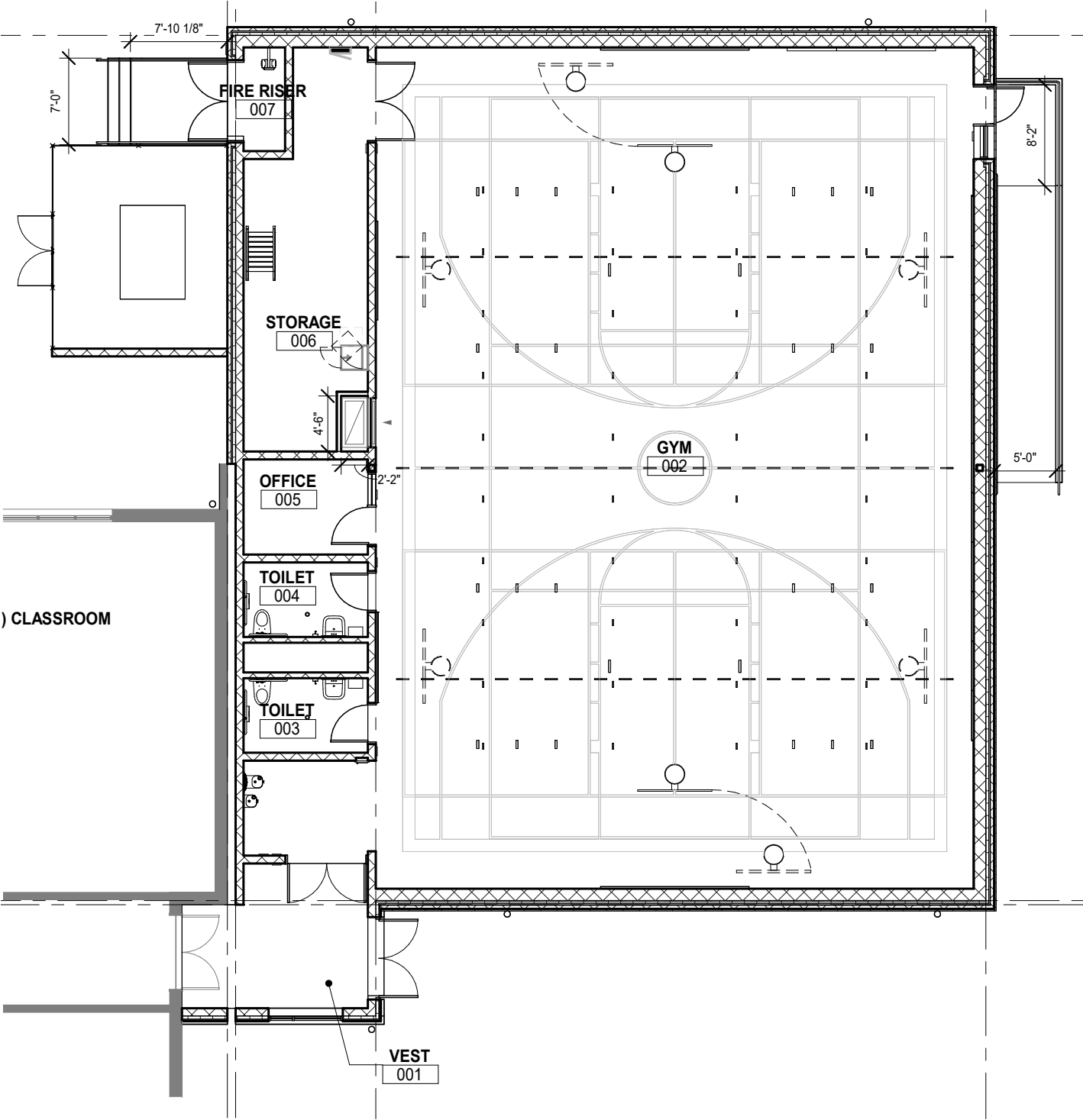
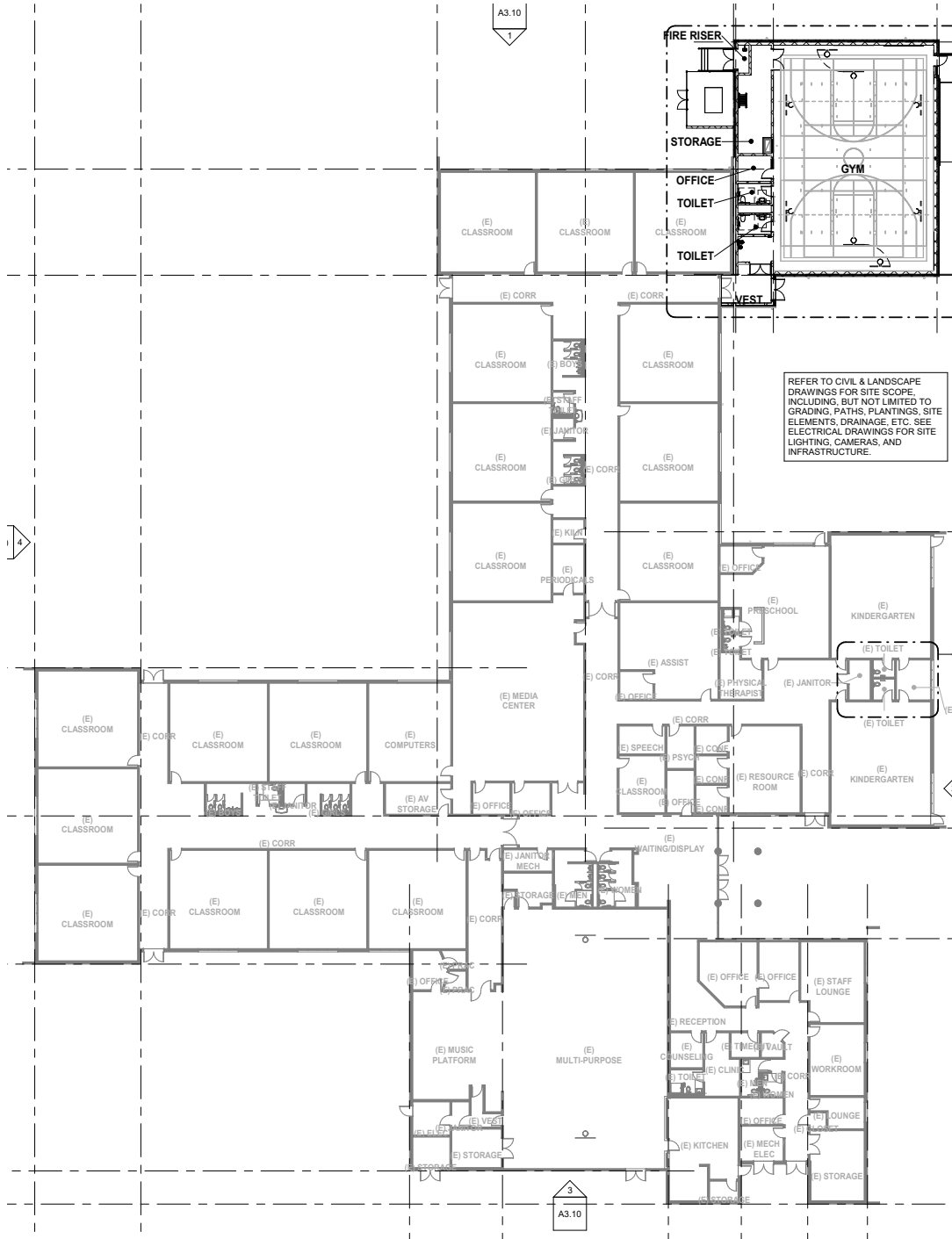
DESIGN STARTED JUNE 2022

LAND USE AND BUILDING PERMITS
WERE RECEIVED OCTOBER 2023
BOND VOTE FEBRUARY 2024

READY TO BID



NKSD FACILITY COMMITTEE MEETING #2 / FLOOR PLAN



NKSD FACILITY COMMITTEE MEETING #2 / INTERIOR



NKSD FACILITY COMMITTEE MEETING #2 / SUQUAMISH ES

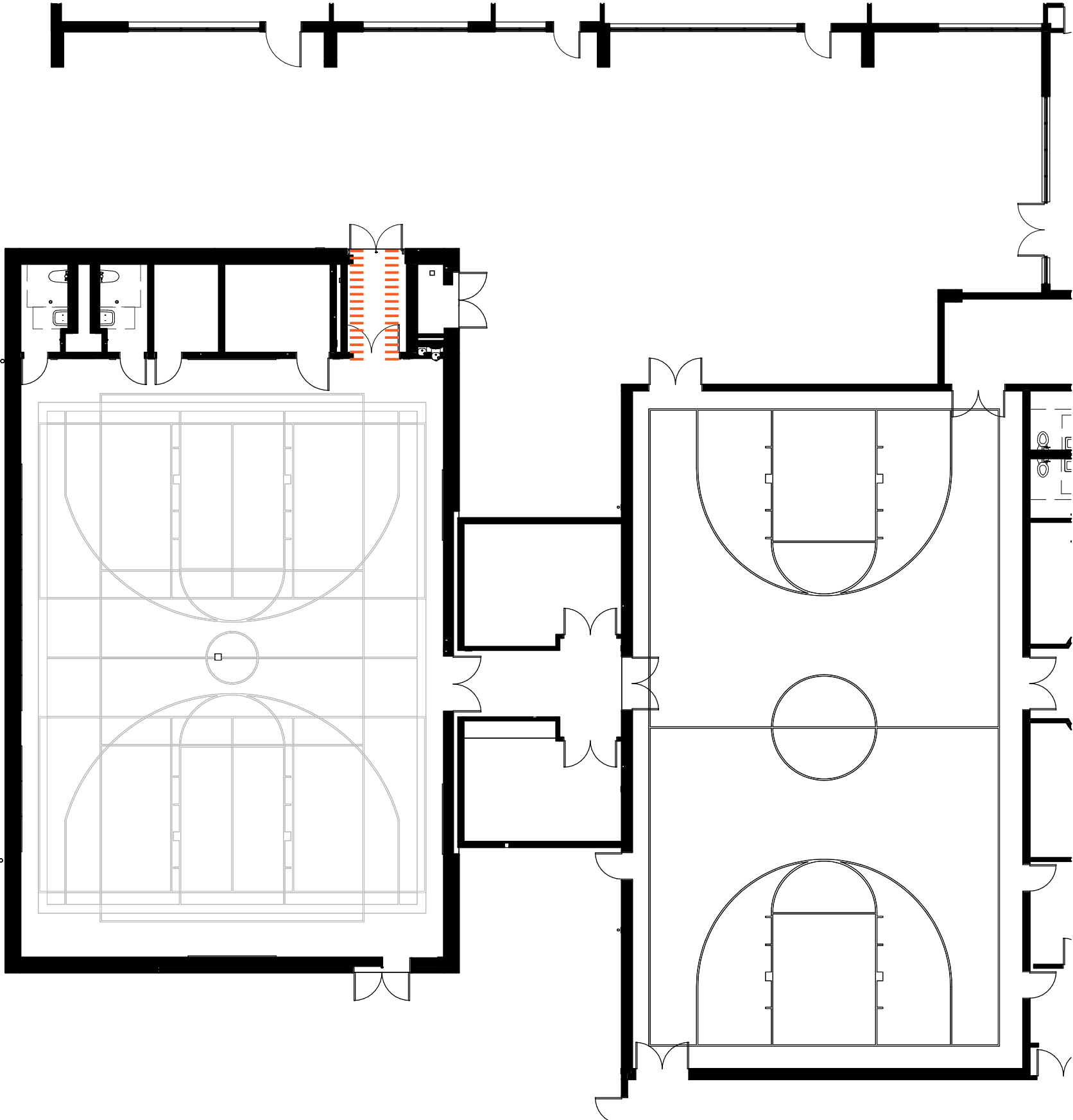
APPROX. 4200 SF

ORIGINALLY PLANNED FOR 3,600 SF
INCREASED SIZE IN ORDER TO BETTER
SUPPORT COMMUNITY USE

DESIGN STARTED JUNE 2022

LAND USE AND BUILDING PERMITS
RECEIVED DECEMBER 2023

BIDS RECEIVED MARCH 5, 2024



NKSD FACILITY COMMITTEE MEETING #2 / INTERIOR



NKSD FACILITY COMMITTEE MEETING #2 / POULSBO ES

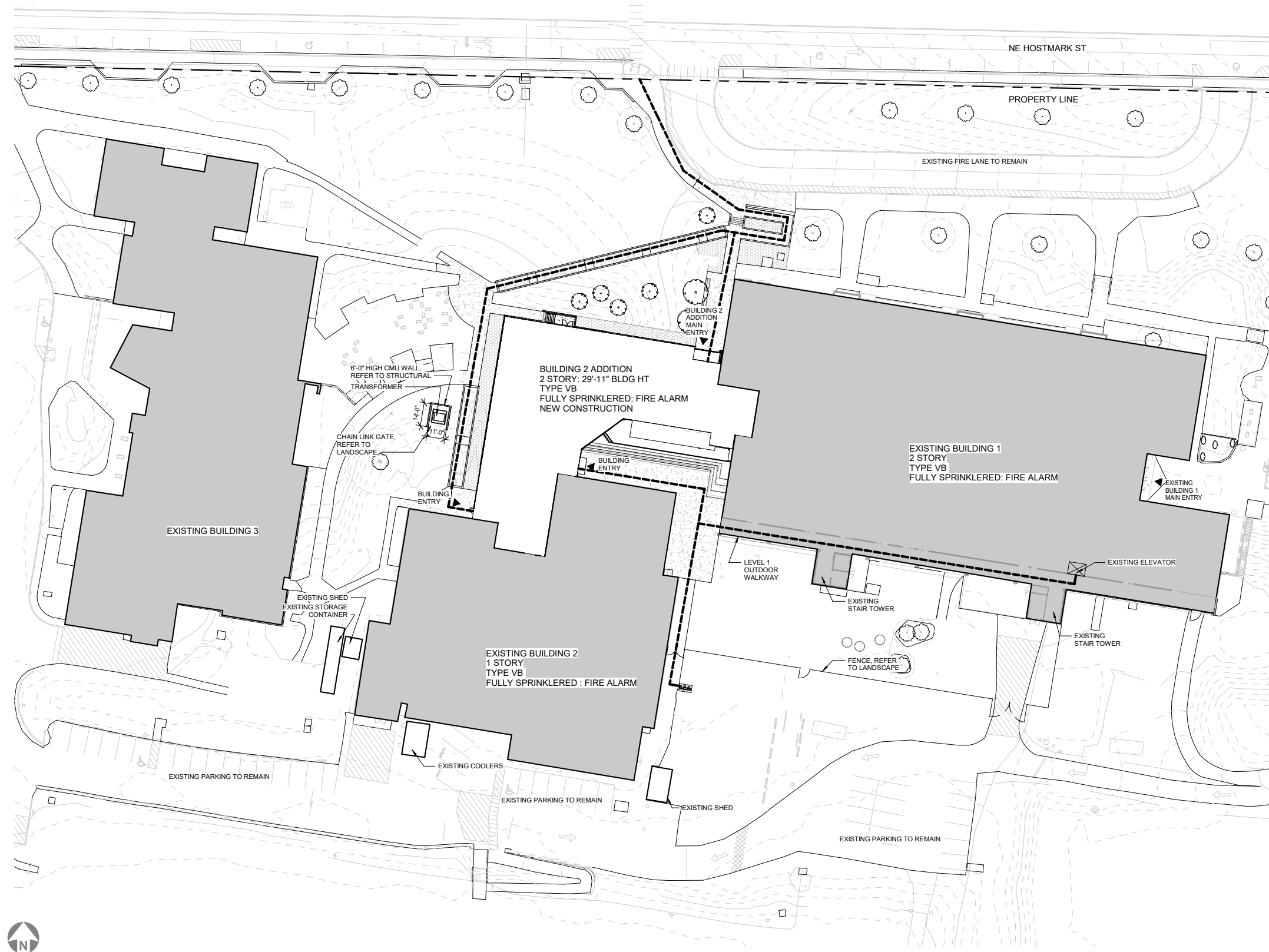
APPROX. 18,400 SF

DESIGN STARTED AUGUST 2022
PERMITTED THROUGH CITY OF POULSBO

LAND USE AND BUILDING PERMITS
APPROVED APRIL 2023

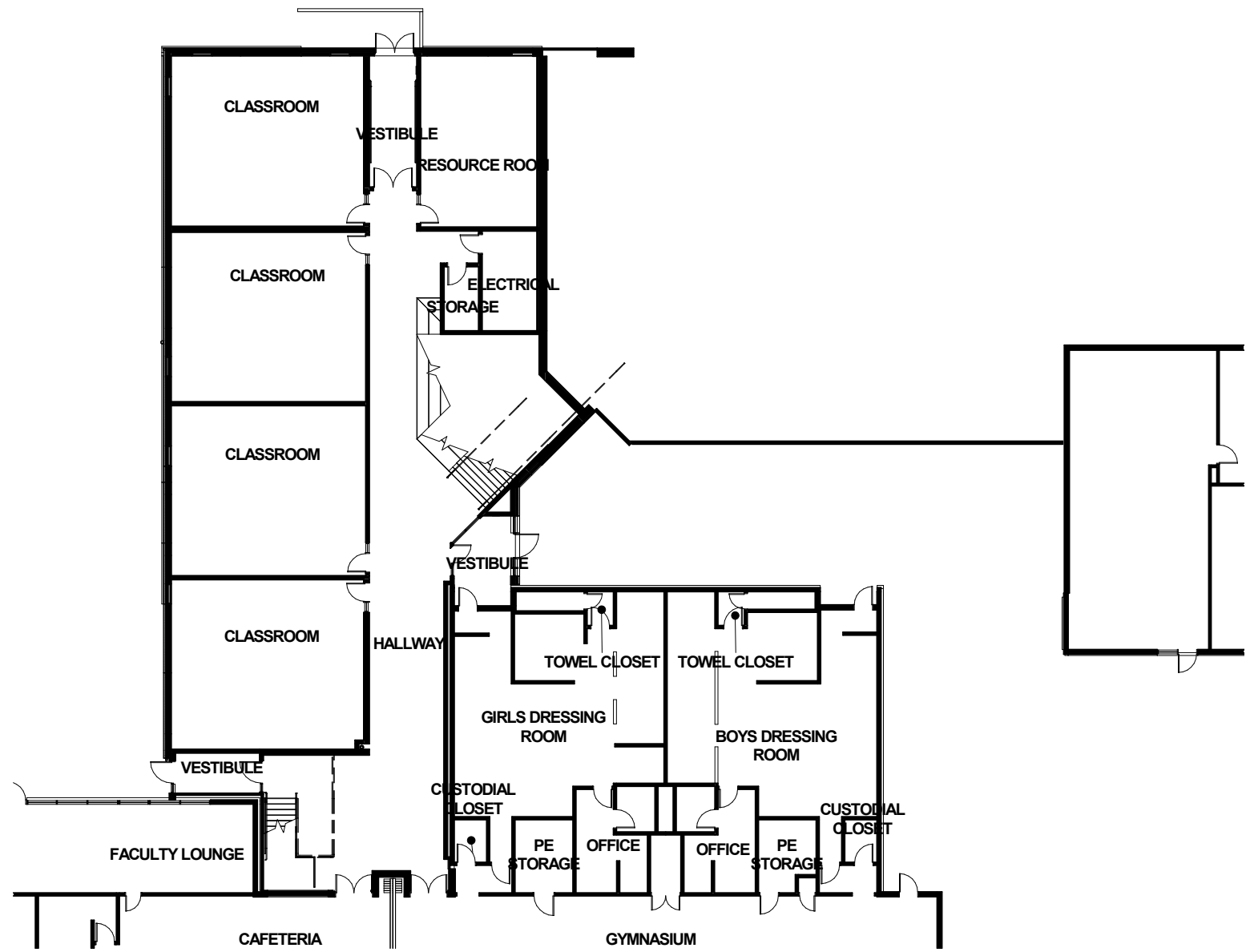
BIDS RECEIVED MAY 31, 2023
RECEIVED 9 BIDS

LOW BID: \$11,109,000
HIGHEST BID: \$12,346,000

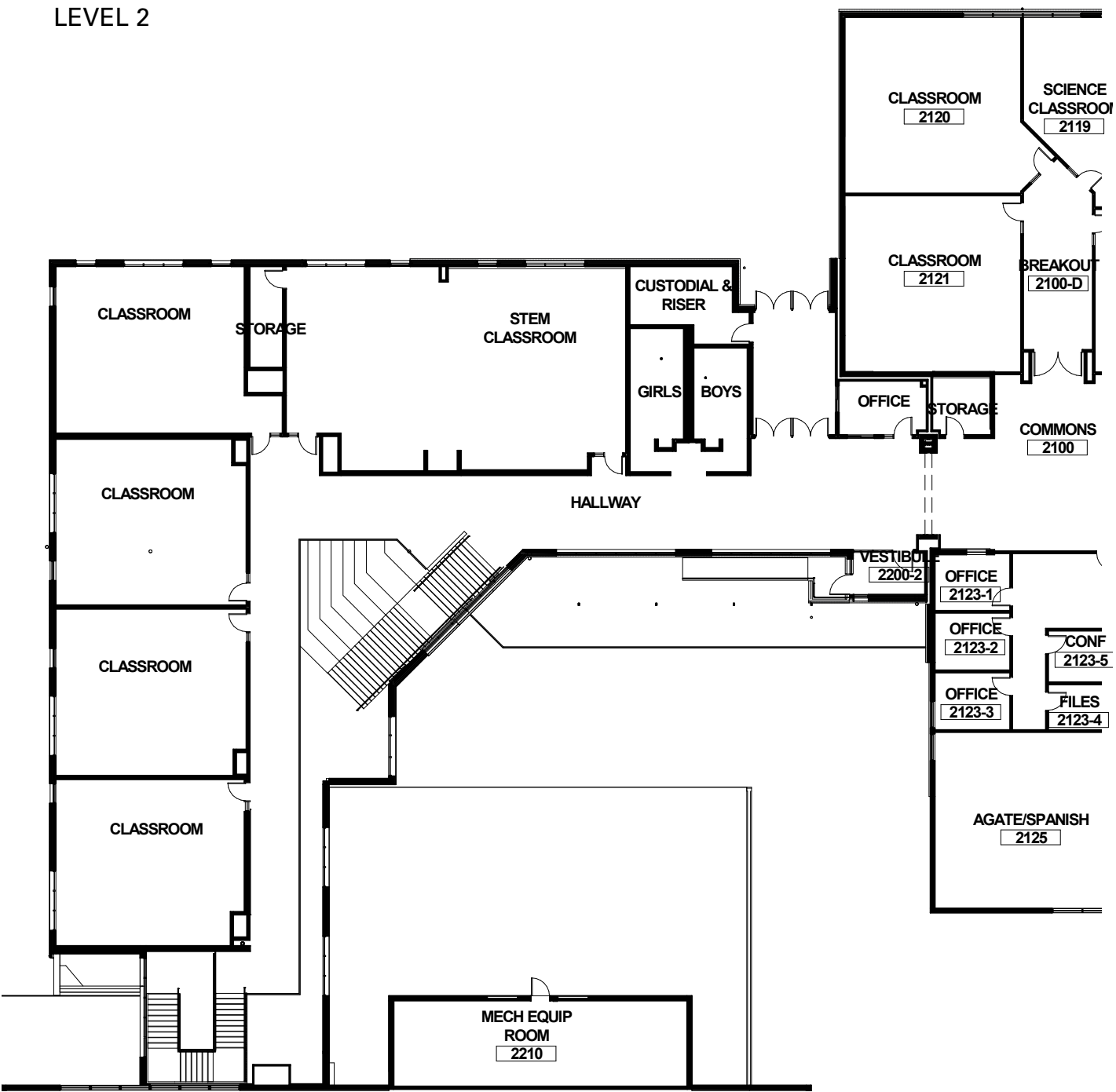


NKSD FACILITY COMMITTEE MEETING #2 / FLOOR PLANS

LEVEL 1



LEVEL 2




NKSD FACILITY COMMITTEE MEETING #2 / ENTRY



NKSD FACILITY COMMITTEE MEETING #2 / INTERIOR

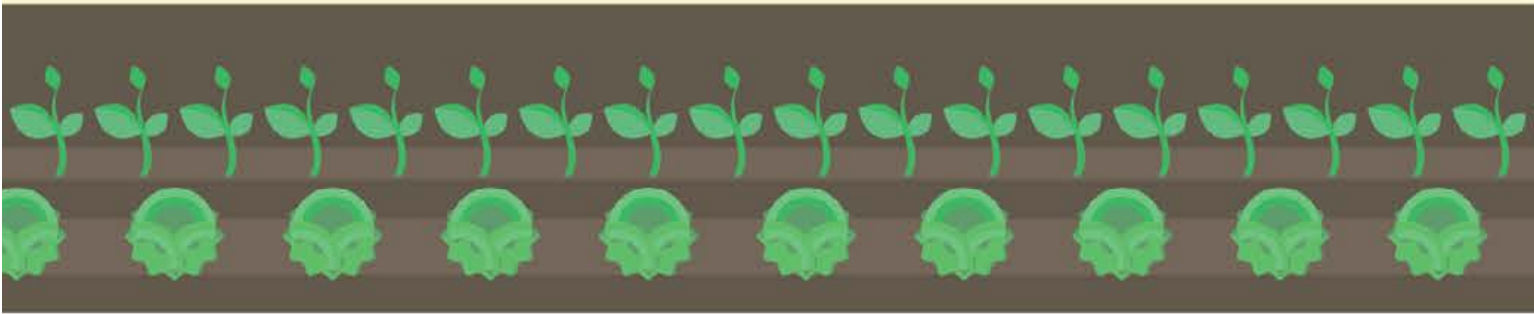



FINANCE OVERVIEW /

LEVIES 

50% + 1


SIMPLE MAJORITY

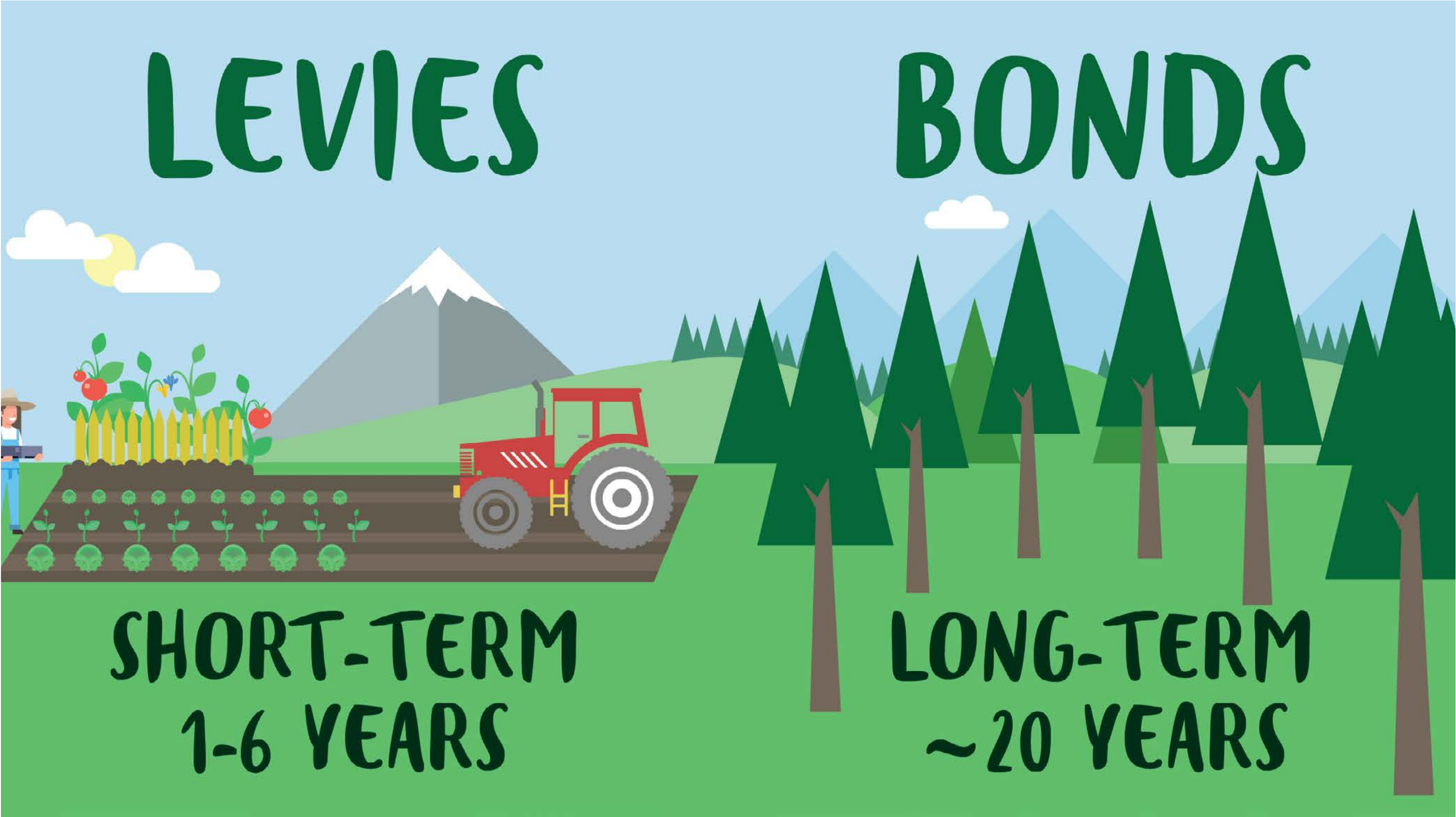


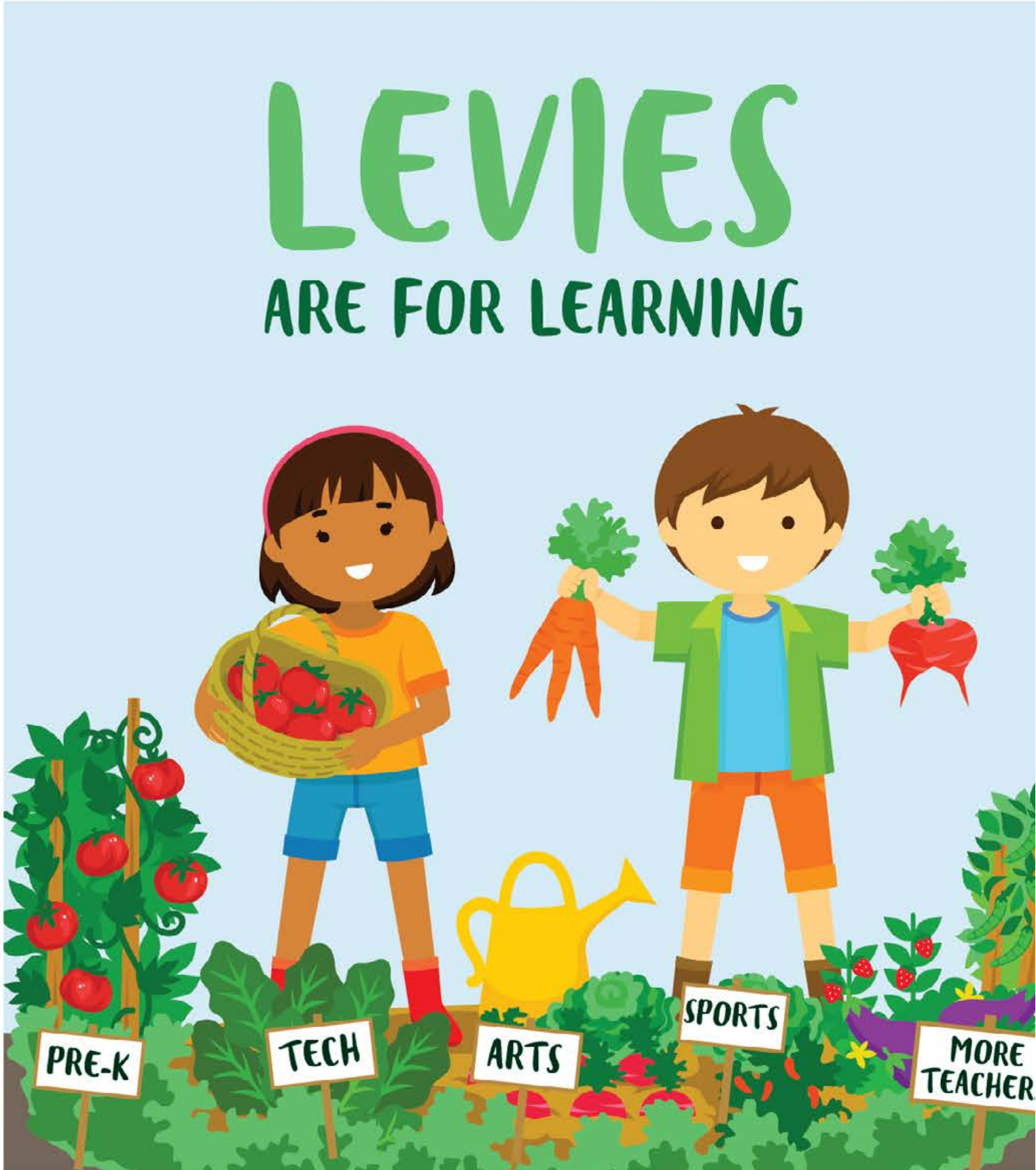
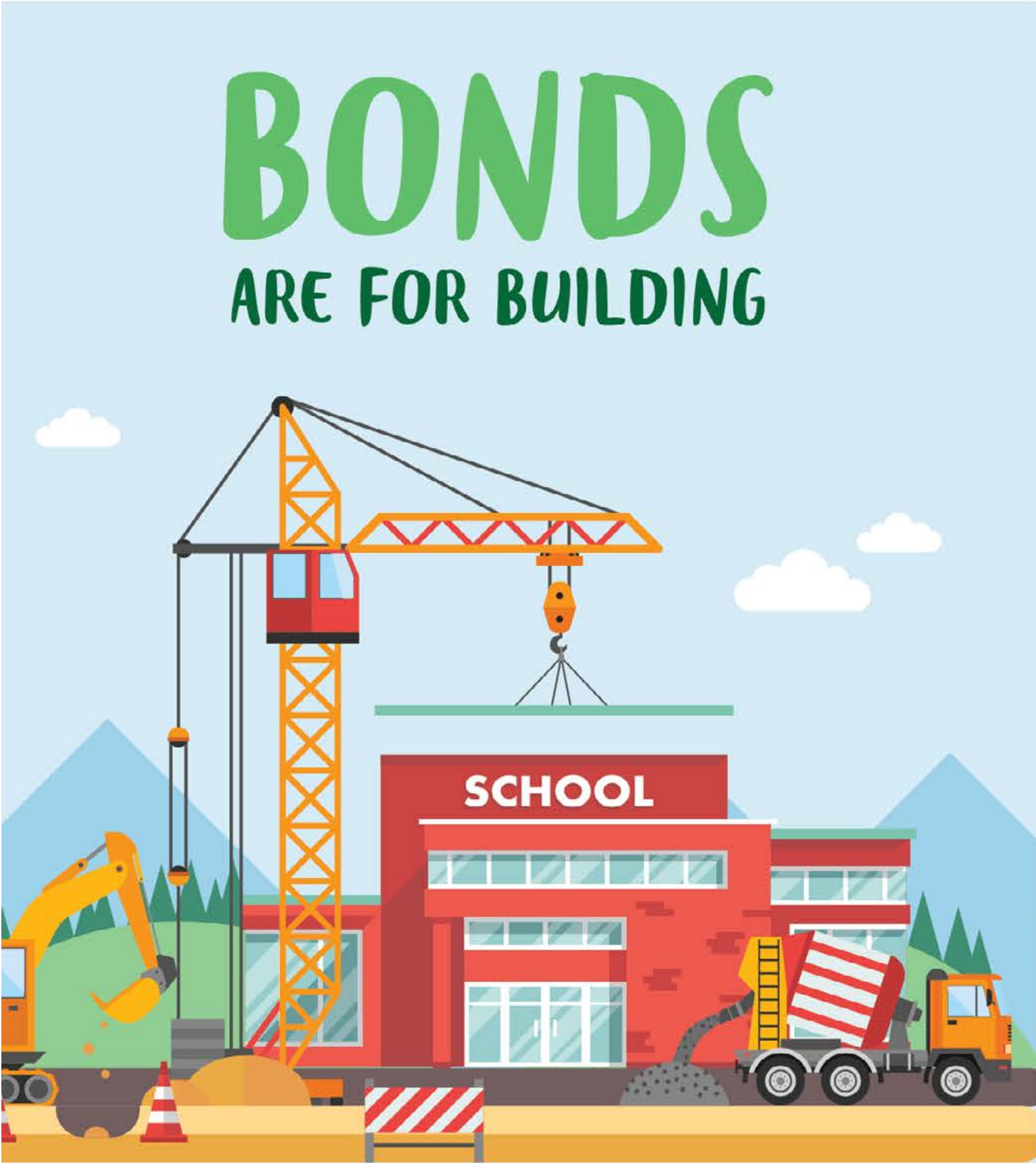
BONDS 

60% + 1

SUPER MAJORITY







BONDS

ARE FOR BUILDING



LEVIES

ARE FOR LEARNING



EXCEPT...

EDUCATIONAL PROGRAMS
& OPERATIONS LEVIES

FUND ESSENTIAL STAFF SUCH AS:

- + TEACHERS
- + NURSES
- + SOCIAL WORKERS
- + PARA-EDUCATORS
- + COLLEGE AND CAREER COUNSELORS
- + SECURITY PERSONNEL
- + CUSTODIANS
- + BUS DRIVERS

CAPITAL LEVIES

FUND CAPITAL PROJECTS (NOT MAINTENANCE)

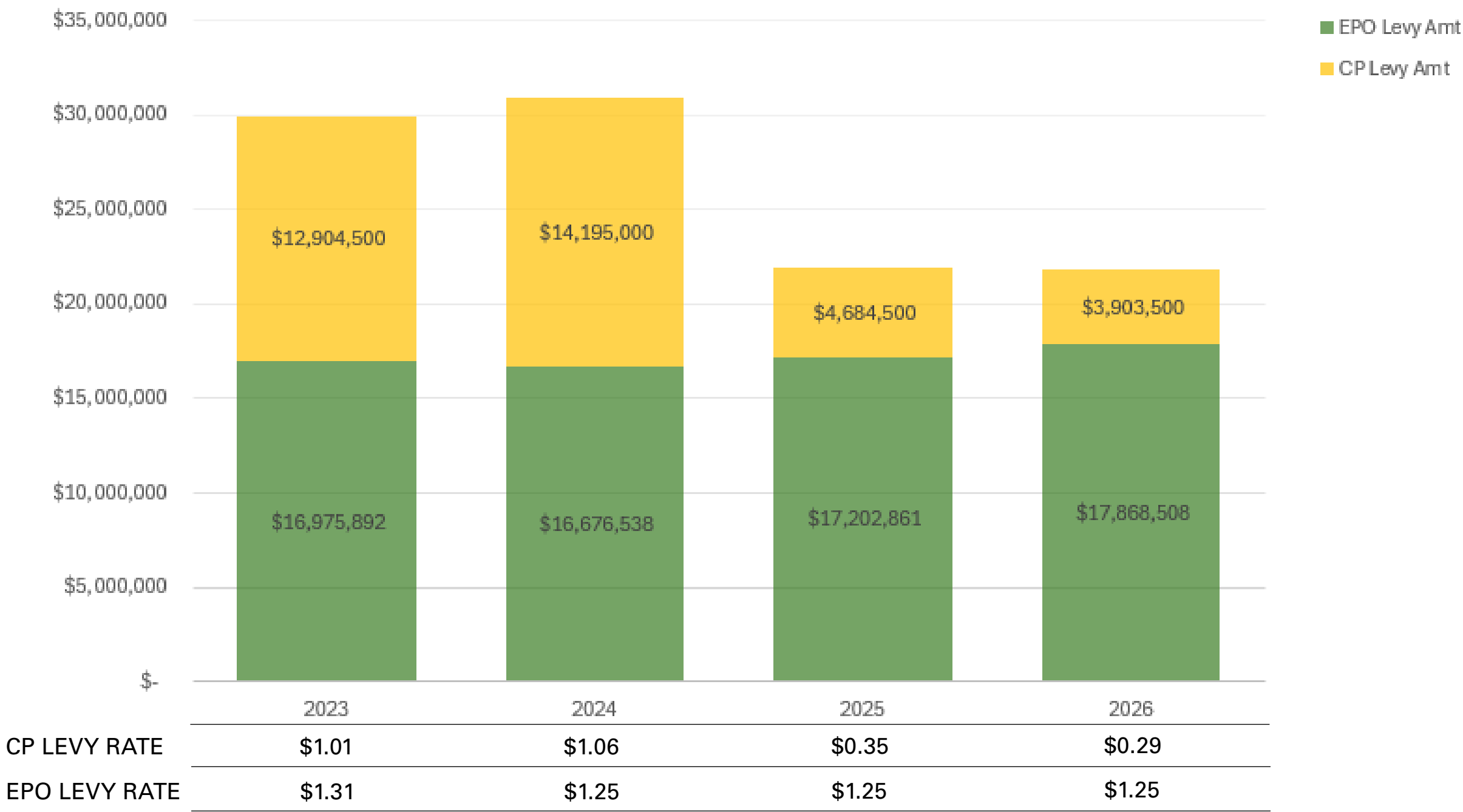
- + CAPITAL RENEWAL PROJECTS
- + RENOVATION PROJECTS
- + MODERN TECHNOLOGY
- + ENHANCED BUILDING SECURITY

NKSD FACILITY COMMITTEE MEETING #2 /

KEY DATES

- + JULY 25TH: BOARD RESOLUTION VOTE
- + AUGUST 6TH: PROVIDE RESOLUTION TO COUNTY

CURRENT LEVY ACTUAL AND ANTICIPATED REVENUE



COMMUNICATIONS /

NKSD FACILITY COMMITTEE MEETING #2 / WEB PAGE



About the Committee

A Facilities Advisory Committee (FAC) develops recommendations for school facilities in the short and long term.

NKSD's FAC comprises community members, parents, students, and school staff members who study available information and projections to understand current school building conditions and plan for future school facility's needs.

Simply put, NKSD's FAC helps ensure that the district's facilities are safe, adequate, and well-maintained and that we are planning for future needs.

FAC recommendations are informed by:

- School facility needs assessment data.
- Present and future educational program needs
- Building condition reports
- Input from students, families, citizens, and staff.
- School enrollment history and Projections
- Community development information
- Capital funding options.
- and more...

Upcoming Meetings & Events

< MAY 2024 >						
SUN	MON	TUE	WED	THU	FRI	SAT
28	29	30	1	2	3	4
5	6	7	8	9	10	11
12	13	14	15	16	17	18
19	20	21	22	23	24	25
26	27	28	29	30	31	1

May 15 2024

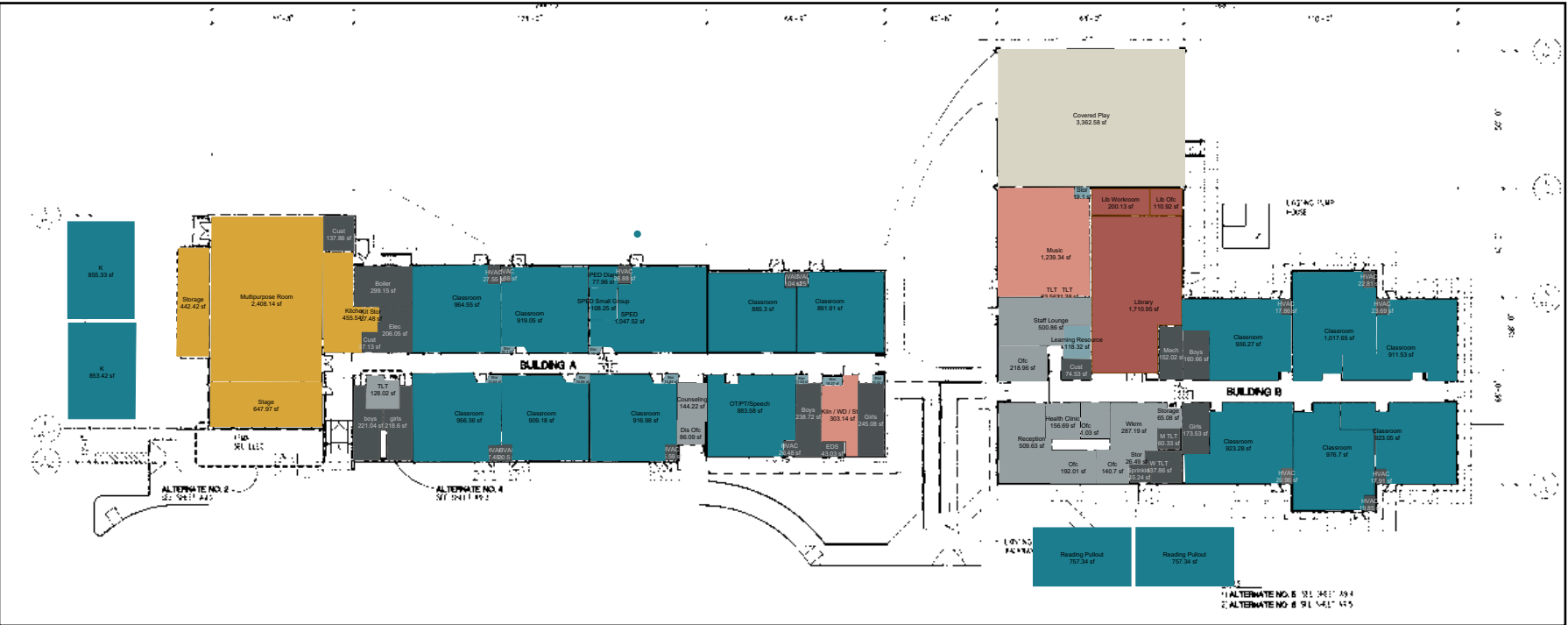
**Facilities Advisory
Committee Meeting**

🕒 6:00 PM - 7:30 PM

FAC nkschools.org/fac
CAPITAL PROJECTS nkschools.org/capitalprojects

HILDER PEARSON ELEMENTARY SCHOOL /

NKSD FACILITY COMMITTEE MEETING #2 / HILDER PEARSON ES



HILDER PEARSON ELEMENTARY SCHOOL

ADDRESS:	15650 CENTRAL VALLEY RD POULSBO, WA 98370
GRADES:	K-5
CONSTRUCTION DATES:	1951 - LOWER BUILDING 1953 - MULTI-PURPOSE ROOM 1961 - UPPER BUILDING 1961 - LOWER CLASSROOMS 2003 - HVAC UPGRADES
SITE AREA:	10.12 ACRES
BUILDING AREA (GSF):	32,814 SF
ENROLLMENT:	291 STUDENTS
TEACHING STATION COUNT:	17 TS
PORTABLES:	4 CLASSROOMS
SITE FEATURES:	COVERED PLAY, 2 PLAYGROUNDS, 1 FIELD

Enrollment Forecasts by Elementary School/Program

School	Current Enrollment	Forecasts →					
	2022–23	2023–24	2024–25	2025–26	2026–27	2027–28	2032–33
Gordon ES	402	404	400	396	405	390	408
Pearson ES	285	290	290	286	284	275	309
Poulsbo ES	421	422	415	429	442	435	459
Suquamish ES	323	341	338	329	331	323	343
Vinland ES	518	534	556	583	603	611	731
Wofle ES	287	272	270	265	267	263	289
NK Options	57	57	57	57	57	57	57
NKOA/PAL	27	26	26	26	26	26	26
K–5	2,320	2,347	2,350	2,370	2,416	2,382	2,623

NKSD FACILITY COMMITTEE MEETING #2 / HILDER PEARSON ES - INITIAL OBSERVATIONS



INITIAL OBSERVATIONS

- + ACCESSIBILITY AND CODE ISSUES CAMPUS WIDE
- + PORTABLES CHALLENGING & CREATES SECURITY ISSUES
- + SPACES DO NOT ADEQUATELY SUPPORT SPED
- + BRICK/CMU/CONCRETE/STUCCO/T-111 WOOD SIDING, ALUM WINDOW HEAD, JAMB & SILL SEALANT JOINT FAILING. CRACKING AND STAINING OF MATERIALS ALSO PRESENT
- + MEMBRANE ROOFS SHOW SIGN OF REACHING IT'S USEFUL LIFE, MOSS ON THE ROOF, DOWNSPOUTS LEAKING, PONDING WATER PRESENT OVER COVERED WALKWAY
- + INTERIOR FINISHES WORN, FLOOR CRACKING PRESENT THROUGHOUT BOTH BUILDINGS
- + WATER SOURCED HEAT PUMPS AT END OF USEFUL LIFE, CURRENTLY ONE IS NOT OPERATING AND BUILDING AUTOMATION CONTROLS ARE OBSOLETE
- + BOILER WATER LOOP PIPES LEAKING BETWEEN BUILDINGS
- + FFE SHOWING SIGNS OF AGE AND WEAR/TEAR

NKSD FACILITY COMMITTEE MEETING #2 / HILDER PEARSON ES - FEEDBACK



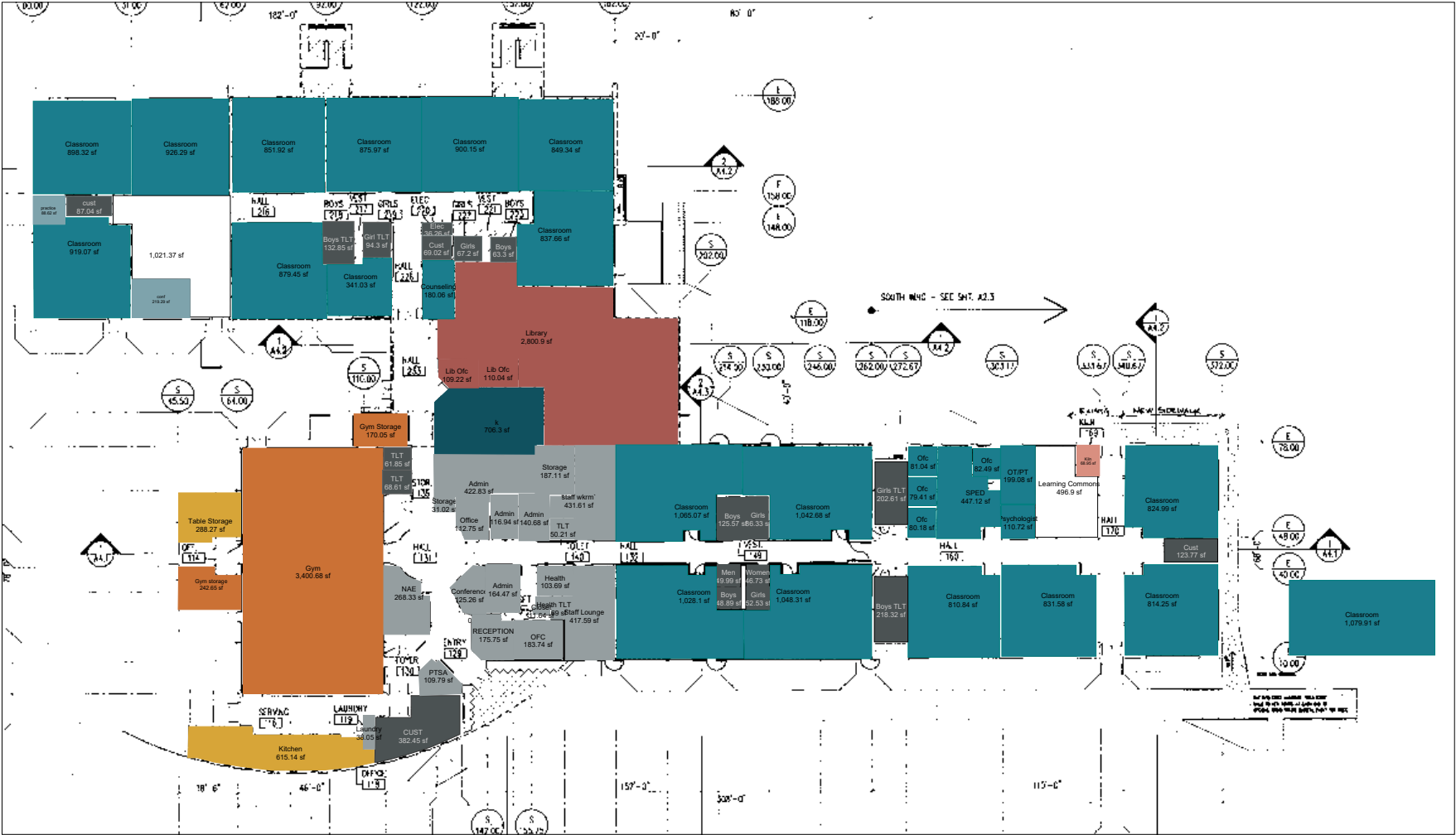
TOP CHALLENGES

1. PROXIMITY TO THE ROAD, PARKING LOT SIZE, PICK-UP AND DROP-OFF
2. SITE SECURITY / LACK OF FENCING
3. SITE NOT ACCESSIBLE TO PEOPLE WITH LIMITED MOBILITY
4. SCHOOL SECURITY / NO SECURE VESTIBULES
5. NOT ENOUGH RESTROOMS FOR STAFF/STUDENTS
6. NO SMALL GROUP LEARNING OR PUSH-IN SPACES
7. LACK OF MAKERSPACES
8. MINIMAL SPACES FOR STUDENT SERVICES - ELL, NATIVE AMERICAN LIAISON, PSYCHOLOGIST, BEFORE/AFTER SCHOOL PROGRAMS, SPED
9. HVAC SYSTEM INCONSISTENT
10. NO DESIGNATED COMMUNITY SPACES



SUQUAMISH ELEMENTARY SCHOOL /

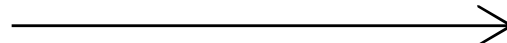
NKSD FACILITY COMMITTEE MEETING #2 / SUQUAMISH ES



SUQUAMISH ELEMENTARY SCHOOL

ADDRESS:	18950 PARK BLVD NE
	SUQUAMISH, WA 98392
GRADES:	PRE-K-5
CONSTRUCTION DATES:	1961 - MAIN BUILDING
	1978 - EAST ADDITION & COVERED PLAY
	1989 - SOUTH ADDITION
	1994 - NORTH ADDITION
	2024 - GYM ADDITION
SITE AREA:	7.26 ACRES
BUILDING AREA (GSF):	44,830 SF
ENROLLMENT:	327 STUDENTS
TEACHING STATION COUNT:	19 TS
PORTABLES:	2 CLASSROOMS
SITE FEATURES:	COVERED PLAY,
	1 PLAYGROUNDS, 2 FIELDS

Enrollment Forecasts by Elementary School/Program

School	Current Enrollment	Forecasts 					
	2022-23	2023-24	2024-25	2025-26	2026-27	2027-28	2032-33
Gordon ES	402	404	400	396	405	390	408
Pearson ES	285	290	290	286	284	275	309
Poulsbo ES	421	422	415	429	442	435	459
Suquamish ES	323	341	338	329	331	323	343
Vinland ES	518	534	556	583	603	611	731
Wofle ES	287	272	270	265	267	263	289
NK Options	57	57	57	57	57	57	57
NKOA/PAL	27	26	26	26	26	26	26
K-5	2,320	2,347	2,350	2,370	2,416	2,382	2,623

NKSD FACILITY COMMITTEE MEETING #2 / SUQUAMISH ES - INITIAL OBSERVATIONS



INITIAL OBSERVATIONS

- + ACCESSIBILITY AND CODE ISSUES CAMPUS WIDE
- + PORTABLE CHALLENGING AND CREATES SECURITY ISSUES
- + SPACES DO NOT ADEQUATELY SUPPORT SPED
- + WATER SOURCED HEAT PUMPS AT END OF USEFUL LIFE AND BUILDING AUTOMATION CONTROLS ARE OBSOLETE
- + STRUCTURE IN GOOD CONDITION, SLAB CRACKING
- + MINOR CRACKING AT EXTERIOR MATERIALS
- + WINDOW JOINT FAILURES
- + ROOFS IN FAIR CONDITION, SOME PONDING AND BLISTERS VISIBLE. CONDENSATION PRESENT AT SKY LIGHTS
- + SANITARY WASTE LINE LEAKING AT COVERED PLAY
- + CASEWORK AGE AND CONDITION INCONSISTENT
- + BURIED PROPANE TANK FOR BOILERS IS NOT UP TO CODE
- + MULTIPLE DATED OPERABLE WALLS, CREATE ACOUSTIC CHALLENGES
- + FFE SHOWING SIGNS OF AGE AND WEAR/TEAR

NKSD FACILITY COMMITTEE MEETING #2 / SUQUAMISH ES - FEEDBACK



TOP CHALLENGES

1. BUILDING PRESENTATION NOT WELCOMING
2. PARKING AND PEDESTRIAN CONFLICTS - PICK-UP AND DROP-OFF
3. ACCESS TO CAMPUS WITHOUT HAVING TO GO TO OFFICE
4. ENTIRE SITE NOT ACCESSIBLE TO PEOPLE WITH LIMITED MOBILITY
5. SIGHT LINES OBSTRUCTED
6. HVAC SYSTEM INCONSISTENT
7. WI-FI IS NOT SECURE
8. NO DEDICATED STAFF RESTROOMS



THANK YOU.