

We Are Sweet Home

Board of Education Study Session At Maplemere Elementary Schools

Tonight's Presentations

- Student WIG Presentations
- Student Leader Presentation
- Maplemere Update by Mr. Ryan
- Superintendent Report



We Are Sweet Home

Thank you Maplemere!

Superintendent's Report

**Accountability Report Released This Afternoon
District in Local Support and Improvement
Formerly Known as District in Good Standing.**



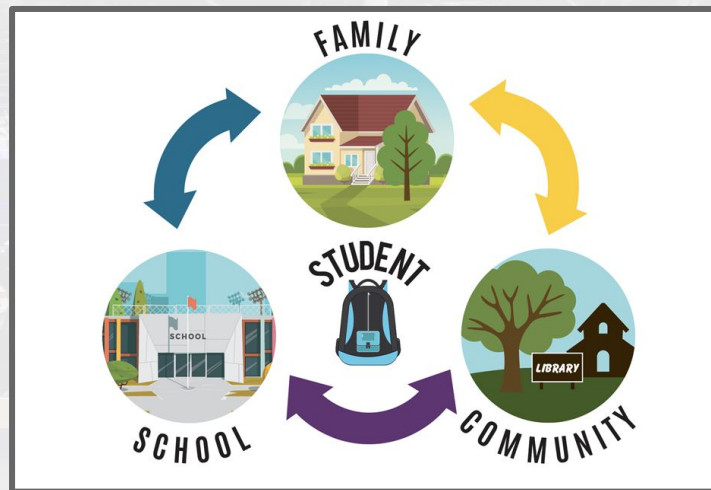
We Are Sweet Home

Sweet Home Education Foundation (SHEF) Faculty/Staff Basketball Game



We Are Sweet Home

Arabic Speaking Family Liaison



- Hiring process is taking place this week.
- Designed to serve all English Language Learner Families in the District, with Arabic-speaking population are highest.
- Bridge gap in family and community engagement. Housed at the High School.



We Are Sweet Home

Building Use Committee Meeting Jan. 11

- Focus on Transportation in effort to ease driver shortage.
- Will review impact of walking distances, common pickup and dropoff spots, and bell schedules.
- Committee will report to the Board in early 2023.



We Are Sweet Home

UPK At Sweet Home

- Goal is to offer UPK to every eligible student in the Sweet Home Central School District willing to enroll in the full-day program.
- Benefits of Full-Day UPK for all Eligible Students include:
 - Higher literacy and math achievement
 - Quicker acceptance of school life
 - Kindergarten readiness
 - Higher attendance rate throughout their school career
 - Higher graduation rates and higher levels of achievement throughout their school career
 - Lower the chance of social and emotional issues at school
 - Etc...
- Looking to continue our relationship with Four Seasons at St. Leo's. Proximal to Maplemere.
- Looking to add additional sections at Heritage Heights, Glendale and Willow Ridge.

**PRE-K
FOR ALL**



We Are Sweet Home

EdLaw 2D Compliance

- Vendors must be approved and EDLaw 2D compliant in order for us to use their products. Protects identifiable information and calls for transparency.
- Vendors must sign contract with BOCES or our District.
- District Office worked closely with Technology Coaches to develop process and forms for compliance purposes.
- Process being rolled out this week throughout the District.

We Are Sweet Home

Superintendent's Report

Questions from the Board??

