

March 2, 2020

Mr. Eric Hamilton  
Edina Public Schools  
5701 Normandale Road  
Edina, MN 55424



**RE: Lead-in-Water Sampling  
IEA Project #201911146**

Dear Mr. Hamilton:

At the request of Edina Public Schools, IEA collected one-hundred and sixty-five (165) water samples from identified potable water sources on December 4, 2019, for lead analyses from the following two (2) buildings:

- Countryside Elementary (76 samples)
- Creek Valley Elementary (89 samples)

The purpose of the sampling is to document lead content in the sampled locations and compare to the district designated action level of 20 parts per billion (ppb). An additional follow-up sample was collected on February 12, 2020, in Room 224 after the fixture was replaced.

## INTRODUCTION

Minnesota Statute 121A.335 requires public school buildings serving pre-kindergarten through grade 12 to test for lead in potable water fixtures every five years. The *3Ts for Reducing Lead in Drinking Water Toolkit* (2018) and the Lead Contamination Control Act (LCCA) of 1988 were created by the Environmental Protection Agency (EPA) to identify and reduce lead in drinking water. Lead is a metal that usually enters drinking water through the distribution system, including pipes, solders, faucets, and valves. Lead content in water may increase when the water is allowed to sit undisturbed in the system. Exposure to lead is a health concern.

The EPA recommends taking action when elevated lead levels are noted in water fixtures. The MDH and MDE recommend taking a fixture out of service if levels are 20 parts per billion (ppb) or higher. The MDH and MDE also recommend taking action according to their guidelines for fixtures with levels of 2 parts per billion (ppb) or higher.

## METHODOLOGY

IEA collected 165 first-draw (unless otherwise noted) samples of approximately 250 milliliters (ml) of water. "First draw" means the samples are collected before the fixture is used or flushed during the day. The first-draw sample results reflect a worst-case scenario, i.e., the highest lead level that would be consumed by building occupants. MDH recommends fixtures not be used 6 to 18 hours prior to sampling fixtures.

INSTITUTE FOR ENVIRONMENTAL ASSESSMENT, INC.  
[www.ieasafety.com](http://www.ieasafety.com)

BROOKLYN PARK  
9201 West Broadway, #600  
Brooklyn Park, MN 55445  
763-315-7900 / FAX 763-315-7920  
800-233-9513

MANKATO  
610 North Riverfront Drive  
Mankato, MN 56001  
507-345-8818 / FAX 507-345-5301  
800-233-9513

ROCHESTER  
210 Woodlake Drive SE  
Rochester, MN 55904  
507-281-6664 / FAX 507-281-6695  
800-233-9513

BRAINERD  
601 NW 5<sup>th</sup> Street, Ste. #4  
Brainerd, MN 56401  
218-454-0703 / FAX 218-454-0703  
800-233-9513

MARSHALL  
1420 East College Drive  
Marshall, MN 56258  
507-476-3599 / FAX 507-537-6985  
800-233-9513

VIRGINIA  
5525 Emerald Avenue  
Mountain Iron, MN 55768  
218-410-9521  
800-233-9513

Water samples were analyzed by Minnesota Valley Testing Laboratories (MVTl) in New Ulm, Minnesota, which uses EPA-approved analytical methods and quality control/assurance procedures. Samples were analyzed using the ICP/MS EPA Method 200.8.

## RESULTS & DISCUSSION

The lead-in-water sampling results ranged from below the level of detection (<0.5 ppb) to 98.3 ppb. There are two (2) sample results greater than the district designated action level of 20 ppb. See *Table 1: Water Testing Results Exceeding 20 ppb*. The laboratory reports are provided in Appendix A. Laboratory results are reported in micrograms per liter (µg/L) which is equivalent to ppb.

**Table 1: Water Testing Results Exceeding 20 ppb during December 4, 2019 Sampling**

Sample Number	Building	Sampling Location	Fixture Type	Results (ppb)	Follow-up Action
19-A61636	Creek Valley Elementary	Room 227 Sink	Faucet	22.7	Retested February 12, 2020 1.55 ppb
19-A61641	Creek Valley Elementary	Room 206 Sprayer	Sprayer	98.3	Removed from Service

ppb – parts per billion

## RECOMMENDATIONS

After follow-up actions, sampled fixtures showed lead levels below the designated action level of 20 ppb. Based on the sample result(s), no further action is required at this time.

The MDH recommends labeling any water fixtures not included in the sampling program, including bathroom taps, hose bibbs, laboratory faucets/sinks or custodial closet sinks.

If the school receives its water from a Community Public Water Supply, such as a municipal water supply, MDH encourages the school to work with them to assess the source contribution of lead coming into the school.

It is recommended that a copy of the district's Lead in Water Testing Report be made available to staff and the public through the district's administrative offices. Per Minnesota Statutes, section 121A.335, a school district that has tested its buildings for the presence of lead shall make the results of the testing available to the public for review and must notify parents of the availability of the information.

## GENERAL CONDITIONS

The analysis and opinions expressed in this report are based upon data obtained from the district at the indicated locations. This report does not reflect variations in conditions that may occur across the site, property, or facility. Actual conditions may vary and may not become evident without further assessment.

The report is prepared for the exclusive use of our client for specific application to the project discussed and has been prepared in accordance with generally accepted environmental, health and safety practices. Other than as provided in the preceding sentence and in our Proposal #8529 dated October 18, 2019, regarding lead-in-water sampling at district locations, including the General Conditions attached thereto, no warranties are extended or made.

Please contact IEA if you would like assistance with any of the above recommendations or have questions regarding this report.

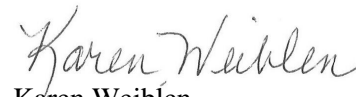
Sincerely,

IEA, Inc.



Mary Ferrian, CSP, CPSI  
EHS Division Manager

Reviewed by:



Karen Weiblen  
EHS/IEQ Consultant

MF/khb 03022020

Enc.

# **Appendix A**

## *Laboratory Testing Report*



# MINNESOTA VALLEY TESTING LABORATORIES, INC.

1126 N. Front St. ~ New Ulm, MN 56073 ~ 800-782-3557 ~ Fax 507-359-2890

2616 E. Broadway Ave. ~ Bismarck, ND 58501 ~ 800-279-6885 ~ Fax 701-258-9724

1201 Lincoln Highway ~ Nevada, IA 50201 ~ 800-362-0855 ~ Fax 515-382-3885

www.mvttl.com

MEMBER

ACIL

Report Date: 13 Dec 2019

HEIDI SOLBERG  
IEA/BROOKLYN PARK  
9201 W BDWY STE #600  
BROOKLYN PARK MN 55445

Work Order #: 12-18672  
Account #: 002190  
Purchase Order #: 201911146

Date Received: 4 Dec 2019  
Date Sampled: 4 Dec 2019  
Temperature at Receipt: 21.1C

PROJECT NAME: COUNTRYSIDE ELEM.  
PROJECT NUMBER: 201911146

LAB NUMBER	SAMPLE DESCRIPTION	LEAD RESULTS	MCL	DATE ANALYZED	ANALYST
19-A61492	12042019CE-1 KITCHEN SINK #1 (MIDDLE OF ROOM)	1.27 ug/L	15.0	9 Dec 19	KAM
19-A61493	12042019CE-2 KITCHEN SINK #2 (BY WINDOW)	0.78 ug/L	15.0	9 Dec 19	KAM
19-A61494	12042019CE-3 KITCHEN SPRAYER	1.87 ug/L	15.0	9 Dec 19	KAM
19-A61495	12042019CE-4 HALLWAY BY ROOM 213 WC	< 0.5 ug/L	15.0	9 Dec 19	KAM
19-A61496	12042019CE-5 HALLWAY BY ROOM 213 BF	< 0.5 ug/L	15.0	9 Dec 19	KAM
19-A61497	12042019CE-6 ROOM 213 SINK LEFT	< 0.5 ug/L	15.0	9 Dec 19	KAM
19-A61498	12042019CE-7 ROOM 213 SINK RIGHT	< 0.5 ug/L	15.0	9 Dec 19	KAM
19-A61499	12042019CE-8	< 0.5 ug/L	15.0	9 Dec 19	KAM

Approved by:

Dan O'Connell

Chemistry Laboratory Managers New Ulm, MN

David Smahel

Analyses performed under our Minnesota Department of Health Accreditation conform to the current TNI standards. The reporting limit was elevated for any analyte requiring a dilution as coded below:

@ = Due to sample matrix  
! = Due to sample quantity

# = Due to concentration of other analytes  
+ = Due to internal standard response

CERTIFICATION: MN LAB # 027-015-125 ND WW/DW # R-040



# MINNESOTA VALLEY TESTING LABORATORIES, INC.

1126 N. Front St. ~ New Ulm, MN 56073 ~ 800-782-3557 ~ Fax 507-359-2890

2616 E. Broadway Ave. ~ Bismarck, ND 58501 ~ 800-279-6885 ~ Fax 701-258-9724

1201 Lincoln Highway ~ Nevada, IA 50201 ~ 800-362-0855 ~ Fax 515-382-3885

www.mvttl.com

MEMBER

ACIL

Report Date: 13 Dec 2019

HEIDI SOLBERG  
IEA/BROOKLYN PARK  
9201 W BDWY STE #600  
BROOKLYN PARK MN 55445

Work Order #: 12-18672  
Account #: 002190  
Purchase Order #: 201911146

Date Received: 4 Dec 2019  
Date Sampled: 4 Dec 2019  
Temperature at Receipt: 21.1C

PROJECT NAME: COUNTRYSIDE ELEM.  
PROJECT NUMBER: 201911146

LAB NUMBER	SAMPLE DESCRIPTION	LEAD RESULTS	MCL	DATE ANALYZED	ANALYST
	ROOM 213 DF				
19-A61500	12042019CE-9 ROOM 211 SINK LEFT	< 0.5 ug/L	15.0	9 Dec 19	KAM
19-A61501	12042019CE-10 ROOM 211 SINK RIGHT	< 0.5 ug/L	15.0	9 Dec 19	KAM
19-A61502	12042019CE-11 ROOM 211 DF	< 0.5 ug/L	15.0	9 Dec 19	KAM
19-A61503	12042019CE-12 ROOM 209 SINK RIGHT	< 0.5 ug/L	15.0	9 Dec 19	KAM
19-A61504	12042019CE-13 ROOM 209 SINK LEFT	< 0.5 ug/L	15.0	9 Dec 19	KAM
19-A61505	12042019CE-14 ROOM 209 DF	< 0.5 ug/L	15.0	9 Dec 19	KAM
19-A61506	12042019CE-15 STAFF 201 SINK	< 0.5 ug/L	15.0	9 Dec 19	KAM

Approved by:

Dan O'Connell

David Smahel

Chemistry Laboratory Managers New Ulm, MN

Analyses performed under our Minnesota Department of Health Accreditation conform to the current TNI standards.  
The reporting limit was elevated for any analyte requiring a dilution as coded below:

@ = Due to sample matrix

# = Due to concentration of other analytes

! = Due to sample quantity

+ = Due to internal standard response

CERTIFICATION: MN LAB # 027-015-125 ND WW/DW # R-040



# MINNESOTA VALLEY TESTING LABORATORIES, INC.

1126 N. Front St. ~ New Ulm, MN 56073 ~ 800-782-3557 ~ Fax 507-359-2890

2616 E. Broadway Ave. ~ Bismarck, ND 58501 ~ 800-279-6885 ~ Fax 701-258-9724

1201 Lincoln Highway ~ Nevada, IA 50201 ~ 800-362-0855 ~ Fax 515-382-3885

www.mvttl.com

MEMBER

ACIL

Report Date: 13 Dec 2019

HEIDI SOLBERG  
IEA/BROOKLYN PARK  
9201 W BDWY STE #600  
BROOKLYN PARK MN 55445

Work Order #: 12-18672  
Account #: 002190  
Purchase Order #: 201911146

Date Received: 4 Dec 2019  
Date Sampled: 4 Dec 2019  
Temperature at Receipt: 21.1C

PROJECT NAME: COUNTRYSIDE ELEM.  
PROJECT NUMBER: 201911146

LAB NUMBER	SAMPLE DESCRIPTION	LEAD RESULTS	MCL	DATE ANALYZED	ANALYST
19-A61507	12042019CE-16 STAFF 201 HOT WATER DISPENSER	< 0.5 ug/L	15.0	9 Dec 19	KAM
19-A61508	12042019CE-17 200 SINK LEFT	< 0.5 ug/L	15.0	9 Dec 19	KAM
19-A61509	12042019CE-18 GYM 2112 N DF	< 0.5 ug/L	15.0	9 Dec 19	KAM
19-A61510	12042019CE-19 HEALTH OFFICE SINK	< 0.5 ug/L	15.0	9 Dec 19	KAM
19-A61511	12042019CE-20 HALLWAY BY 217 WC	< 0.5 ug/L	15.0	9 Dec 19	KAM
19-A61512	12042019CE-21 HALLWAY BY 217 BF	< 0.5 ug/L	15.0	9 Dec 19	KAM
19-A61513	12042019CE-22 ROOM 214 LEFT SINK	< 0.5 ug/L	15.0	9 Dec 19	KAM
19-A61514	12042019CE-23	< 0.5 ug/L	15.0	9 Dec 19	KAM

Approved by:

Dan O'Connell

David Smahel

Chemistry Laboratory Managers New Ulm, MN

Page: 3

Analyses performed under our Minnesota Department of Health Accreditation conform to the current TNI standards. The reporting limit was elevated for any analyte requiring a dilution as coded below:

@ = Due to sample matrix  
! = Due to sample quantity

# = Due to concentration of other analytes  
+ = Due to internal standard response

CERTIFICATION: MN LAB # 027-015-125 ND WW/DW # R-040



# MINNESOTA VALLEY TESTING LABORATORIES, INC.

1126 N. Front St. ~ New Ulm, MN 56073 ~ 800-782-3557 ~ Fax 507-359-2890

2616 E. Broadway Ave. ~ Bismarck, ND 58501 ~ 800-279-6885 ~ Fax 701-258-9724

1201 Lincoln Highway ~ Nevada, IA 50201 ~ 800-362-0855 ~ Fax 515-382-3885

www.mvttl.com

MEMBER

ACIL

Report Date: 13 Dec 2019

HEIDI SOLBERG  
IEA/BROOKLYN PARK  
9201 W BDWY STE #600  
BROOKLYN PARK MN 55445

Work Order #: 12-18672  
Account #: 002190  
Purchase Order #: 201911146

Date Received: 4 Dec 2019  
Date Sampled: 4 Dec 2019  
Temperature at Receipt: 21.1C

PROJECT NAME: COUNTRYSIDE ELEM.  
PROJECT NUMBER: 201911146

LAB NUMBER	SAMPLE DESCRIPTION	LEAD RESULTS	MCL	DATE ANALYZED	ANALYST
	ROOM 214 RIGHT SINK				
19-A61515	12042019CE-24 ROOM 200 RIGHT SINK	< 0.5 ug/L	15.0	9 Dec 19	KAM
19-A61516	12042019CE-25 ROOM 214 DF LEFT	< 0.5 ug/L	15.0	9 Dec 19	KAM
19-A61517	12042019CE-26 HALLWAY BY 109 DF	< 0.5 ug/L	15.0	9 Dec 19	KAM
19-A61518	12042019CE-28 HALLWAY BY 109 BF	< 0.5 ug/L	15.0	9 Dec 19	KAM
19-A61519	12042019CE-29 ROOM 106 SINK	< 0.5 ug/L	15.0	9 Dec 19	KAM
19-A61520	12042019CE-30 ROOM 106 DF	< 0.5 ug/L	15.0	9 Dec 19	KAM
19-A61521	12042019CE-31 ROOM 104 SINK	< 0.5 ug/L	15.0	9 Dec 19	KAM

Approved by:

Dan O'Connell

David Smahel

Chemistry Laboratory Managers New Ulm, MN

Page: 4

Analyses performed under our Minnesota Department of Health Accreditation conform to the current TNI standards. The reporting limit was elevated for any analyte requiring a dilution as coded below:

@ = Due to sample matrix

# = Due to concentration of other analytes

! = Due to sample quantity

+ = Due to internal standard response

CERTIFICATION: MN LAB # 027-015-125 ND WW/DW # R-040





# MINNESOTA VALLEY TESTING LABORATORIES, INC.

1126 N. Front St. ~ New Ulm, MN 56073 ~ 800-782-3557 ~ Fax 507-359-2890

2616 E. Broadway Ave. ~ Bismarck, ND 58501 ~ 800-279-6885 ~ Fax 701-258-9724

1201 Lincoln Highway ~ Nevada, IA 50201 ~ 800-362-0855 ~ Fax 515-382-3885

www.mvttl.com

MEMBER

ACIL

Report Date: 13 Dec 2019

HEIDI SOLBERG  
IEA/BROOKLYN PARK  
9201 W BDWY STE #600  
BROOKLYN PARK MN 55445

Work Order #: 12-18672  
Account #: 002190  
Purchase Order #: 201911146

Date Received: 4 Dec 2019  
Date Sampled: 4 Dec 2019  
Temperature at Receipt: 21.1C

PROJECT NAME: COUNTRYSIDE ELEM.  
PROJECT NUMBER: 201911146

LAB NUMBER	SAMPLE DESCRIPTION	LEAD RESULTS	MCL	DATE ANALYZED	ANALYST
19-A61522	12042019CE-32 ROOM 104 DF	< 0.5 ug/L	15.0	9 Dec 19	KAM
19-A61523	12042019CE-33 ROOM 102 SINK	< 0.5 ug/L	15.0	9 Dec 19	KAM
19-A61524	12042019CE-34 ROOM 102 DF	< 0.5 ug/L	15.0	9 Dec 19	KAM
19-A61525	12042019CE-35 ROOM 100 SINK	< 0.5 ug/L	15.0	9 Dec 19	KAM
19-A61526	12042019CE-36 ROOM 100 DF	< 0.5 ug/L	15.0	9 Dec 19	KAM
19-A61527	12042019CE-37 ROOM 101 SINK	< 0.5 ug/L	15.0	9 Dec 19	KAM
19-A61528	12042019CE-38 ROOM 101 DF	< 0.5 ug/L	15.0	9 Dec 19	KAM
19-A61529	12042019CE-39 ROOM 103 SINK	1.00 ug/L	15.0	9 Dec 19	KAM

Approved by:

Dan O'Connell

David Smahel

Chemistry Laboratory Managers New Ulm, MN

Page: 5

Analyses performed under our Minnesota Department of Health Accreditation conform to the current TNI standards. The reporting limit was elevated for any analyte requiring a dilution as coded below:

@ = Due to sample matrix

# = Due to concentration of other analytes

! = Due to sample quantity

+ = Due to internal standard response

CERTIFICATION: MN LAB # 027-015-125 ND WW/DW # R-040



# MINNESOTA VALLEY TESTING LABORATORIES, INC.

1126 N. Front St. ~ New Ulm, MN 56073 ~ 800-782-3557 ~ Fax 507-359-2890

2616 E. Broadway Ave. ~ Bismarck, ND 58501 ~ 800-279-6885 ~ Fax 701-258-9724

1201 Lincoln Highway ~ Nevada, IA 50201 ~ 800-362-0855 ~ Fax 515-382-3885

www.mvttl.com

MEMBER

ACIL

Report Date: 13 Dec 2019

HEIDI SOLBERG  
IEA/BROOKLYN PARK  
9201 W BDWY STE #600  
BROOKLYN PARK MN 55445

Work Order #: 12-18672  
Account #: 002190  
Purchase Order #: 201911146

Date Received: 4 Dec 2019  
Date Sampled: 4 Dec 2019  
Temperature at Receipt: 21.1C

PROJECT NAME: COUNTRYSIDE ELEM.  
PROJECT NUMBER: 201911146

LAB NUMBER	SAMPLE DESCRIPTION	LEAD RESULTS	MCL	DATE ANALYZED	ANALYST
19-A61530	12042019CE-40 ROOM 103 DF	< 0.5 ug/L	15.0	9 Dec 19	KAM
19-A61531	12042019CE-41 ROOM 111 SINK	< 0.5 ug/L	15.0	9 Dec 19	KAM
19-A61532	12042019CE-42 ROOM 111 DF	< 0.5 ug/L	15.0	9 Dec 19	KAM
19-A61533	12042019CE-43 ROOM 113 SINK	< 0.5 ug/L	15.0	9 Dec 19	KAM
19-A61534	12042019CE-44 ROOM 113 DF	0.53 ug/L	15.0	9 Dec 19	KAM
19-A61535	12042019CE-45 ROOM 115 SINK	< 0.5 ug/L	15.0	9 Dec 19	KAM
19-A61536	12042019CE-46 ROOM 115 DF	< 0.5 ug/L	15.0	9 Dec 19	KAM
19-A61537	12042019CE-47	0.70 ug/L	15.0	9 Dec 19	KAM

Approved by:

Dan O'Connell

David Smahel

Chemistry Laboratory Managers New Ulm, MN

Page: 6

Analyses performed under our Minnesota Department of Health Accreditation conform to the current TNI standards. The reporting limit was elevated for any analyte requiring a dilution as coded below:

@ = Due to sample matrix

# = Due to concentration of other analytes

! = Due to sample quantity

+ = Due to internal standard response

CERTIFICATION: MN LAB # 027-015-125 ND WW/DW # R-040



# MINNESOTA VALLEY TESTING LABORATORIES, INC.

1126 N. Front St. ~ New Ulm, MN 56073 ~ 800-782-3557 ~ Fax 507-359-2890

2616 E. Broadway Ave. ~ Bismarck, ND 58501 ~ 800-279-6885 ~ Fax 701-258-9724

1201 Lincoln Highway ~ Nevada, IA 50201 ~ 800-362-0855 ~ Fax 515-382-3885

www.mvttl.com

MEMBER

ACIL

Report Date: 13 Dec 2019

HEIDI SOLBERG  
IEA/BROOKLYN PARK  
9201 W BDWY STE #600  
BROOKLYN PARK MN 55445

Work Order #: 12-18672  
Account #: 002190  
Purchase Order #: 201911146

Date Received: 4 Dec 2019  
Date Sampled: 4 Dec 2019  
Temperature at Receipt: 21.1C

PROJECT NAME: COUNTRYSIDE ELEM.  
PROJECT NUMBER: 201911146

LAB NUMBER	SAMPLE DESCRIPTION	LEAD RESULTS	MCL	DATE ANALYZED	ANALYST
	ROOM 116 SINK				
19-A61538	12042019CE-48 ROOM 116 DF	< 0.5 ug/L	15.0	9 Dec 19	KAM
19-A61539	12042019CE-49 ROOM 114 SINK	< 0.5 ug/L	15.0	9 Dec 19	KAM
19-A61540	12042019CE-50 ROOM 114 DF	< 0.5 ug/L	15.0	9 Dec 19	KAM
19-A61541	12042019CE-51 ROOM 112 SINK	< 0.5 ug/L	15.0	9 Dec 19	KAM
19-A61542	12042019CE-52 ROOM 112 DF	< 0.5 ug/L	15.0	9 Dec 19	KAM
19-A61543	12042019CE-53 ROOM 313 DF	< 0.5 ug/L	15.0	9 Dec 19	KAM
19-A61544	12042019CE-54 HALLWAY BY ROOM 307 WC	< 0.5 ug/L	15.0	9 Dec 19	KAM

Approved by:

Dan O'Connell

David Smahel

Chemistry Laboratory Managers New Ulm, MN

Analyses performed under our Minnesota Department of Health Accreditation conform to the current TNI standards.  
The reporting limit was elevated for any analyte requiring a dilution as coded below:

@ = Due to sample matrix

# = Due to concentration of other analytes

! = Due to sample quantity

+ = Due to internal standard response

CERTIFICATION: MN LAB # 027-015-125 ND WW/DW # R-040



# MINNESOTA VALLEY TESTING LABORATORIES, INC.

1126 N. Front St. ~ New Ulm, MN 56073 ~ 800-782-3557 ~ Fax 507-359-2890

2616 E. Broadway Ave. ~ Bismarck, ND 58501 ~ 800-279-6885 ~ Fax 701-258-9724

1201 Lincoln Highway ~ Nevada, IA 50201 ~ 800-362-0855 ~ Fax 515-382-3885

www.mvttl.com

MEMBER

ACIL

Report Date: 13 Dec 2019

HEIDI SOLBERG  
IEA/BROOKLYN PARK  
9201 W BDWY STE #600  
BROOKLYN PARK MN 55445

Work Order #: 12-18672  
Account #: 002190  
Purchase Order #: 201911146

Date Received: 4 Dec 2019  
Date Sampled: 4 Dec 2019  
Temperature at Receipt: 21.1C

PROJECT NAME: COUNTRYSIDE ELEM.  
PROJECT NUMBER: 201911146

LAB NUMBER	SAMPLE DESCRIPTION	LEAD RESULTS	MCL	DATE ANALYZED	ANALYST
19-A61545	12042019CE-55 HALLWAY BY ROOM 307 BF	< 0.5 ug/L	15.0	9 Dec 19	KAM
19-A61546	12042019CE-56 ROOM 313 SINK	< 0.5 ug/L	15.0	9 Dec 19	KAM
19-A61547	12042019CE-57 ROOM 316 SINK	< 0.5 ug/L	15.0	9 Dec 19	KAM
19-A61548	12042019CE-58 ROOM 316 DF	< 0.5 ug/L	15.0	9 Dec 19	KAM
19-A61549	12042019CE-59 ROOM 314 SINK	< 0.5 ug/L	15.0	9 Dec 19	KAM
19-A61550	12042019CE-60 ROOM 314 DF	< 0.5 ug/L	15.0	9 Dec 19	KAM
19-A61551	12042019CE-61 ROOM 312 SINK	< 0.5 ug/L	15.0	9 Dec 19	KAM
19-A61552	12042019CE-62 ROOM 312 DF	< 0.5 ug/L	15.0	9 Dec 19	KAM

Approved by:

Dan O'Connell

David Smahel

Chemistry Laboratory Managers New Ulm, MN

Page: 8

Analyses performed under our Minnesota Department of Health Accreditation conform to the current TNI standards. The reporting limit was elevated for any analyte requiring a dilution as coded below:

@ = Due to sample matrix

# = Due to concentration of other analytes

! = Due to sample quantity

+ = Due to internal standard response

CERTIFICATION: MN LAB # 027-015-125 ND WW/DW # R-040



# MINNESOTA VALLEY TESTING LABORATORIES, INC.

1126 N. Front St. ~ New Ulm, MN 56073 ~ 800-782-3557 ~ Fax 507-359-2890

2616 E. Broadway Ave. ~ Bismarck, ND 58501 ~ 800-279-6885 ~ Fax 701-258-9724

1201 Lincoln Highway ~ Nevada, IA 50201 ~ 800-362-0855 ~ Fax 515-382-3885

www.mvttl.com

MEMBER

ACIL

Report Date: 13 Dec 2019

HEIDI SOLBERG  
IEA/BROOKLYN PARK  
9201 W BDWY STE #600  
BROOKLYN PARK MN 55445

Work Order #: 12-18672  
Account #: 002190  
Purchase Order #: 201911146

Date Received: 4 Dec 2019  
Date Sampled: 4 Dec 2019  
Temperature at Receipt: 21.1C

PROJECT NAME: COUNTRYSIDE ELEM.  
PROJECT NUMBER: 201911146

LAB NUMBER	SAMPLE DESCRIPTION	LEAD RESULTS	MCL	DATE ANALYZED	ANALYST
19-A61553	12042019CE-63 ROOM 307 SINK	0.52 ug/L	15.0	9 Dec 19	KAM
19-A61554	12042019CE-64 ROOM 307 DF	< 0.5 ug/L	15.0	9 Dec 19	KAM
19-A61555	12042019CE-65 ROOM 305 SINK	< 0.5 ug/L	15.0	9 Dec 19	KAM
19-A61556	12042019CE-66 ROOM 305 DF	< 0.5 ug/L	15.0	9 Dec 19	KAM
19-A61557	12042019CE-67 ROOM 303 SINK	< 0.5 ug/L	15.0	9 Dec 19	KAM
19-A61558	12042019CE-68 ROOM 303 DF	< 0.5 ug/L	15.0	9 Dec 19	KAM
19-A61559	12042019CE-69 ROOM 301 SINK	< 0.5 ug/L	15.0	9 Dec 19	KAM
19-A61560	12042019CE-70	< 0.5 ug/L	15.0	9 Dec 19	KAM

Approved by:

Dan O'Connell

David Smahel

Chemistry Laboratory Managers New Ulm, MN

Page: 9

Analyses performed under our Minnesota Department of Health Accreditation conform to the current TNI standards. The reporting limit was elevated for any analyte requiring a dilution as coded below:

@ = Due to sample matrix

# = Due to concentration of other analytes

! = Due to sample quantity

+ = Due to internal standard response

CERTIFICATION: MN LAB # 027-015-125 ND WW/DW # R-040



# MINNESOTA VALLEY TESTING LABORATORIES, INC.

1126 N. Front St. ~ New Ulm, MN 56073 ~ 800-782-3557 ~ Fax 507-359-2890

2616 E. Broadway Ave. ~ Bismarck, ND 58501 ~ 800-279-6885 ~ Fax 701-258-9724

1201 Lincoln Highway ~ Nevada, IA 50201 ~ 800-362-0855 ~ Fax 515-382-3885

www.mvttl.com

MEMBER

ACIL

Report Date: 13 Dec 2019

HEIDI SOLBERG  
IEA/BROOKLYN PARK  
9201 W BDWY STE #600  
BROOKLYN PARK MN 55445

Work Order #: 12-18672  
Account #: 002190  
Purchase Order #: 201911146

Date Received: 4 Dec 2019  
Date Sampled: 4 Dec 2019  
Temperature at Receipt: 21.1C

PROJECT NAME: COUNTRYSIDE ELEM.  
PROJECT NUMBER: 201911146

LAB NUMBER	SAMPLE DESCRIPTION	LEAD RESULTS	MCL	DATE ANALYZED	ANALYST
	ROOM 301 DF				
19-A61561	12042019CE-71 ROOM 300 SINK	0.84 ug/L	15.0	10 Dec 19	KAM
19-A61562	12042019CE-72 ROOM 300 DF	< 0.5 ug/L	15.0	10 Dec 19	KAM
19-A61563	12042019CE-73 ROOM 302 SINK	< 0.5 ug/L	15.0	10 Dec 19	KAM
19-A61564	12042019CE-75 ROOM 304 SINK-FAR LEFT	< 0.5 ug/L	15.0	10 Dec 19	KAM
19-A61565	12042019CE-76 ROOM 304 SINK-MIDDLE	< 0.5 ug/L	15.0	10 Dec 19	KAM
19-A61566	12042019CE-77 ROOM 304 SINK-FAR RIGHT	< 0.5 ug/L	15.0	10 Dec 19	KAM
19-A61567	12042019CE-78 ROOM 304 DF	< 0.5 ug/L	15.0	10 Dec 19	KAM

Approved by:

Dan O'Connell

David Smahel

Chemistry Laboratory Managers New Ulm, MN

Analyses performed under our Minnesota Department of Health Accreditation conform to the current TNI standards. The reporting limit was elevated for any analyte requiring a dilution as coded below:

@ = Due to sample matrix

! = Due to sample quantity

# = Due to concentration of other analytes

+ = Due to internal standard response

CERTIFICATION: MN LAB # 027-015-125 ND WW/DW # R-040



# MINNESOTA VALLEY TESTING LABORATORIES, INC.

1126 N. Front St. ~ New Ulm, MN 56073 ~ 800-782-3557 ~ Fax 507-359-2890

2616 E. Broadway Ave. ~ Bismarck, ND 58501 ~ 800-279-6885 ~ Fax 701-258-9724

1201 Lincoln Highway ~ Nevada, IA 50201 ~ 800-362-0855 ~ Fax 515-382-3885

www.mvttl.com

MEMBER

ACIL

Report Date: 16 Dec 2019

HEIDI SOLBERG  
IEA/BROOKLYN PARK  
9201 W BDWY STE #600  
BROOKLYN PARK MN 55445

Work Order #: 12-18694  
Account #: 002190  
Purchase Order #: 201911146

Date Received: 4 Dec 2019  
Date Sampled: 4 Dec 2019  
Temperature at Receipt: 19.6C

PROJECT NAME: CREEK VALLEY ELEM.  
PROJECT NUMBER: 201911146

LAB NUMBER	SAMPLE DESCRIPTION	LEAD RESULTS	MCL	DATE ANALYZED	ANALYST
19-A61568	12042019CVE-1 KITCHEN SINK #1	4.94 ug/L	15.0	10 Dec 19	KAM
19-A61569	12042019CVE-2 KITCHEN SPRAYER	3.52 ug/L	15.0	10 Dec 19	KAM
19-A61570	12042019CVE-3 KITCHEN STEAMER	4.66 ug/L	15.0	10 Dec 19	KAM
19-A61571	12042019CVE-4 KITCHEN SINK #2-BY SERVING LINE	0.50 ug/L	15.0	10 Dec 19	KAM
19-A61572	12042019CVE-5 CAFETERIA DF	2.13 ug/L	15.0	10 Dec 19	KAM
19-A61573	12042019CVE-6 ROOM 307 SINK	0.83 ug/L	15.0	10 Dec 19	KAM
19-A61574	12042019CVE-7 ROOM 307 DF	< 0.5 ug/L	15.0	10 Dec 19	KAM
19-A61575	12042019CVE-8 ROOM 306 SINK	0.99 ug/L	15.0	10 Dec 19	KAM

Approved by:

Dan O'Connell

David Smahel

Chemistry Laboratory Managers New Ulm, MN

Analyses performed under our Minnesota Department of Health Accreditation conform to the current TNI standards. The reporting limit was elevated for any analyte requiring a dilution as coded below:

@ = Due to sample matrix

! = Due to sample quantity

# = Due to concentration of other analytes

+ = Due to internal standard response

CERTIFICATION: MN LAB # 027-015-125 ND WW/DW # R-040

MVTL guarantees the accuracy of the analysis done on the sample submitted for testing. It is not possible for MVTL to guarantee that a test result obtained on a particular sample will be the same on any other sample unless all conditions affecting the sample are the same, including sampling by MVTL. As a mutual protection to clients, the public and ourselves, all reports are submitted as the confidential property of clients, and authorization for publication of statements, conclusions or extracts from or regarding our reports is reserved pending our written approval.

AN EQUAL OPPORTUNITY EMPLOYER



# MINNESOTA VALLEY TESTING LABORATORIES, INC.

1126 N. Front St. ~ New Ulm, MN 56073 ~ 800-782-3557 ~ Fax 507-359-2890

2616 E. Broadway Ave. ~ Bismarck, ND 58501 ~ 800-279-6885 ~ Fax 701-258-9724

1201 Lincoln Highway ~ Nevada, IA 50201 ~ 800-362-0855 ~ Fax 515-382-3885

www.mvttl.com

MEMBER

ACIL

Report Date: 16 Dec 2019

HEIDI SOLBERG  
IEA/BROOKLYN PARK  
9201 W BDWY STE #600  
BROOKLYN PARK MN 55445

Work Order #: 12-18694  
Account #: 002190  
Purchase Order #: 201911146

Date Received: 4 Dec 2019  
Date Sampled: 4 Dec 2019  
Temperature at Receipt: 19.6C

PROJECT NAME: CREEK VALLEY ELEM.  
PROJECT NUMBER: 201911146

LAB NUMBER	SAMPLE DESCRIPTION	LEAD RESULTS	MCL	DATE ANALYZED	ANALYST
19-A61576	12042019CVE-9 ROOM 306 DF	< 0.5 ug/L	15.0	10 Dec 19	KAM
19-A61577	12042019CVE-10 HALLWAY BY 303 WC	< 0.5 ug/L	15.0	10 Dec 19	KAM
19-A61578	12042019CVE-11 HALLWAY BY 303 BF	< 0.5 ug/L	15.0	10 Dec 19	KAM
19-A61579	12042019CVE-12 ROOM 303 SINK	< 0.5 ug/L	15.0	10 Dec 19	KAM
19-A61580	12042019CVE-13 ROOM 303 DF	0.62 ug/L	15.0	10 Dec 19	KAM
19-A61581	12042019CVE-14 ROOM 302 SINK	< 0.5 ug/L	15.0	10 Dec 19	KAM
19-A61582	12042019CVE-15 ROOM 302 DF	< 0.5 ug/L	15.0	10 Dec 19	KAM
19-A61583	12042019CVE-16	< 0.5 ug/L	15.0	10 Dec 19	KAM

Approved by:

Dan O'Connell

David Smahel

Chemistry Laboratory Managers New Ulm, MN

Page: 2

Analyses performed under our Minnesota Department of Health Accreditation conform to the current TNI standards. The reporting limit was elevated for any analyte requiring a dilution as coded below:

@ = Due to sample matrix

# = Due to concentration of other analytes

! = Due to sample quantity

+ = Due to internal standard response

CERTIFICATION: MN LAB # 027-015-125 ND WW/DW # R-040





# MINNESOTA VALLEY TESTING LABORATORIES, INC.

1126 N. Front St. ~ New Ulm, MN 56073 ~ 800-782-3557 ~ Fax 507-359-2890

2616 E. Broadway Ave. ~ Bismarck, ND 58501 ~ 800-279-6885 ~ Fax 701-258-9724

1201 Lincoln Highway ~ Nevada, IA 50201 ~ 800-362-0855 ~ Fax 515-382-3885

www.mvttl.com

MEMBER

ACIL

Report Date: 16 Dec 2019

HEIDI SOLBERG  
IEA/BROOKLYN PARK  
9201 W BDWY STE #600  
BROOKLYN PARK MN 55445

Work Order #: 12-18694  
Account #: 002190  
Purchase Order #: 201911146

Date Received: 4 Dec 2019  
Date Sampled: 4 Dec 2019  
Temperature at Receipt: 19.6C

PROJECT NAME: CREEK VALLEY ELEM.  
PROJECT NUMBER: 201911146

LAB NUMBER	SAMPLE DESCRIPTION	LEAD RESULTS	MCL	DATE ANALYZED	ANALYST
	ROOM 301 SINK				
19-A61584	12042019CVE-17 ROOM 301 DF	1.72 ug/L	15.0	10 Dec 19	KAM
19-A61585	12042019CVE-18 ROOM 305 SINK	0.94 ug/L	15.0	13 Dec 19	KAM
19-A61586	12042019CVE-19 ROOM 305 DF	< 0.5 ug/L	15.0	10 Dec 19	KAM
19-A61587	12042019CVE-20 ROOM 401 SINK	< 0.5 ug/L	15.0	10 Dec 19	KAM
19-A61588	12042019CVE-21 ROOM 401 WC	0.95 ug/L	15.0	10 Dec 19	KAM
19-A61589	12042019CVE-22 ROOM 402 SINK	< 0.5 ug/L	15.0	10 Dec 19	KAM
19-A61590	12042019CVE-24 ROOM 403 SINK	< 0.5 ug/L	15.0	10 Dec 19	KAM

Approved by:

Dan O'Connell

David Smahel

Chemistry Laboratory Managers New Ulm, MN

Page: 3

Analyses performed under our Minnesota Department of Health Accreditation conform to the current TNI standards. The reporting limit was elevated for any analyte requiring a dilution as coded below:

@ = Due to sample matrix

# = Due to concentration of other analytes

! = Due to sample quantity

+ = Due to internal standard response

CERTIFICATION: MN LAB # 027-015-125 ND WW/DW # R-040



# MINNESOTA VALLEY TESTING LABORATORIES, INC.

1126 N. Front St. ~ New Ulm, MN 56073 ~ 800-782-3557 ~ Fax 507-359-2890

2616 E. Broadway Ave. ~ Bismarck, ND 58501 ~ 800-279-6885 ~ Fax 701-258-9724

1201 Lincoln Highway ~ Nevada, IA 50201 ~ 800-362-0855 ~ Fax 515-382-3885

www.mvttl.com

MEMBER

ACIL

Report Date: 16 Dec 2019

HEIDI SOLBERG  
IEA/BROOKLYN PARK  
9201 W BDWY STE #600  
BROOKLYN PARK MN 55445

Work Order #: 12-18694  
Account #: 002190  
Purchase Order #: 201911146

Date Received: 4 Dec 2019  
Date Sampled: 4 Dec 2019  
Temperature at Receipt: 19.6C

PROJECT NAME: CREEK VALLEY ELEM.  
PROJECT NUMBER: 201911146

LAB NUMBER	SAMPLE DESCRIPTION	LEAD RESULTS	MCL	DATE ANALYZED	ANALYST
19-A61591	12042019CVE-25 ROOM 403 WC	0.73 ug/L	15.0	10 Dec 19	KAM
19-A61592	12042019CVE-26 HALLWAY BY 403 WC	< 0.5 ug/L	15.0	10 Dec 19	KAM
19-A61593	12042019CVE-27 HALLWAY BY 403 BF	< 0.5 ug/L	15.0	10 Dec 19	KAM
19-A61594	12042019CVE-28 ROOM 405 SINK	1.60 ug/L	15.0	10 Dec 19	KAM
19-A61595	12042019CVE-29 ROOM 405 DF	< 0.5 ug/L	15.0	10 Dec 19	KAM
19-A61596	12042019CVE-30 ROOM 405 SINK	2.71 ug/L	15.0	13 Dec 19	KAM
19-A61597	12042019CVE-31 ROOM 406 DF	< 0.5 ug/L	15.0	10 Dec 19	KAM
19-A61598	12042019CVE-32 ROOM 407 SINK	1.08 ug/L	15.0	10 Dec 19	KAM

Approved by:

Dan O'Connell

David Smahel

Chemistry Laboratory Managers New Ulm, MN

Page: 4

Analyses performed under our Minnesota Department of Health Accreditation conform to the current TNI standards. The reporting limit was elevated for any analyte requiring a dilution as coded below:

@ = Due to sample matrix

# = Due to concentration of other analytes

! = Due to sample quantity

+ = Due to internal standard response

CERTIFICATION: MN LAB # 027-015-125 ND WW/DW # R-040



# MINNESOTA VALLEY TESTING LABORATORIES, INC.

1126 N. Front St. ~ New Ulm, MN 56073 ~ 800-782-3557 ~ Fax 507-359-2890

2616 E. Broadway Ave. ~ Bismarck, ND 58501 ~ 800-279-6885 ~ Fax 701-258-9724

1201 Lincoln Highway ~ Nevada, IA 50201 ~ 800-362-0855 ~ Fax 515-382-3885

www.mvttl.com

MEMBER

ACIL

Report Date: 16 Dec 2019

HEIDI SOLBERG  
IEA/BROOKLYN PARK  
9201 W BDWY STE #600  
BROOKLYN PARK MN 55445

Work Order #: 12-18694  
Account #: 002190  
Purchase Order #: 201911146

Date Received: 4 Dec 2019  
Date Sampled: 4 Dec 2019  
Temperature at Receipt: 19.6C

PROJECT NAME: CREEK VALLEY ELEM.  
PROJECT NUMBER: 201911146

LAB NUMBER	SAMPLE DESCRIPTION	LEAD RESULTS	MCL	DATE ANALYZED	ANALYST
19-A61599	12042019CVE-33 ROOM 407 DF	< 0.5 ug/L	15.0	10 Dec 19	KAM
19-A61600	12042019CVE-34 ROOM 408 SINK	0.67 ug/L	15.0	13 Dec 19	KAM
19-A61601	12042019CVE-35 ROOM 408 DF	< 0.5 ug/L	15.0	10 Dec 19	KAM
19-A61602	12042019CVE-36 ROOM 408F SINK	1.25 ug/L	15.0	10 Dec 19	KAM
19-A61603	12042019CVE-37 ROOM 408F DF	< 0.5 ug/L	15.0	10 Dec 19	KAM
19-A61604	12042019CVE-38 ROOM 408E SINK	1.33 ug/L	15.0	10 Dec 19	KAM
19-A61605	12042019CVE-39 ROOM 408E DF	< 0.5 ug/L	15.0	10 Dec 19	KAM
19-A61606	12042019CVE-40	0.61 ug/L	15.0	10 Dec 19	KAM

Approved by:

Dan O'Connell

David Smahel

Chemistry Laboratory Managers New Ulm, MN

Page: 5

Analyses performed under our Minnesota Department of Health Accreditation conform to the current TNI standards. The reporting limit was elevated for any analyte requiring a dilution as coded below:

@ = Due to sample matrix

# = Due to concentration of other analytes

! = Due to sample quantity

+ = Due to internal standard response

CERTIFICATION: MN LAB # 027-015-125 ND WW/DW # R-040



# MINNESOTA VALLEY TESTING LABORATORIES, INC.

1126 N. Front St. ~ New Ulm, MN 56073 ~ 800-782-3557 ~ Fax 507-359-2890

2616 E. Broadway Ave. ~ Bismarck, ND 58501 ~ 800-279-6885 ~ Fax 701-258-9724

1201 Lincoln Highway ~ Nevada, IA 50201 ~ 800-362-0855 ~ Fax 515-382-3885

www.mvttl.com

MEMBER

ACIL

Report Date: 16 Dec 2019

HEIDI SOLBERG  
IEA/BROOKLYN PARK  
9201 W BDWY STE #600  
BROOKLYN PARK MN 55445

Work Order #: 12-18694  
Account #: 002190  
Purchase Order #: 201911146

Date Received: 4 Dec 2019  
Date Sampled: 4 Dec 2019  
Temperature at Receipt: 19.6C

PROJECT NAME: CREEK VALLEY ELEM.  
PROJECT NUMBER: 201911146

LAB NUMBER	SAMPLE DESCRIPTION	LEAD RESULTS	MCL	DATE ANALYZED	ANALYST
	ROOM 507 SINK LEFT				
19-A61607	12042019CVE-41 ROOM 507 SINK RIGHT	0.72 ug/L	15.0	10 Dec 19	KAM
19-A61608	12042019CVE-42 ROOM 507 DF RIGHT	< 0.5 ug/L	15.0	10 Dec 19	KAM
19-A61609	12042019CVE-43 ROOM 507 DF LEFT	0.56 ug/L	15.0	10 Dec 19	KAM
19-A61610	12042019CVE-44 ROOM 506 SINK LEFT	0.58 ug/L	15.0	10 Dec 19	KAM
19-A61611	12042019CVE-45 ROOM 506 SINK RIGHT	0.98 ug/L	15.0	10 Dec 19	KAM
19-A61612	12042019CVE-46 ROOM 506 DF LEFT	< 0.5 ug/L	15.0	10 Dec 19	KAM
19-A61613	12042019CVE-47 ROOM 506 DF RIGHT	< 0.5 ug/L	15.0	10 Dec 19	KAM

Approved by:

Dan O'Connell

David Smahel

Chemistry Laboratory Managers New Ulm, MN

Page: 6

Analyses performed under our Minnesota Department of Health Accreditation conform to the current TNI standards. The reporting limit was elevated for any analyte requiring a dilution as coded below:

@ = Due to sample matrix

! = Due to sample quantity

# = Due to concentration of other analytes

+ = Due to internal standard response

CERTIFICATION: MN LAB # 027-015-125 ND WW/DW # R-040



# MINNESOTA VALLEY TESTING LABORATORIES, INC.

1126 N. Front St. ~ New Ulm, MN 56073 ~ 800-782-3557 ~ Fax 507-359-2890

2616 E. Broadway Ave. ~ Bismarck, ND 58501 ~ 800-279-6885 ~ Fax 701-258-9724

1201 Lincoln Highway ~ Nevada, IA 50201 ~ 800-362-0855 ~ Fax 515-382-3885

www.mvttl.com

MEMBER

ACIL

Report Date: 16 Dec 2019

HEIDI SOLBERG  
IEA/BROOKLYN PARK  
9201 W BDWY STE #600  
BROOKLYN PARK MN 55445

Work Order #: 12-18694  
Account #: 002190  
Purchase Order #: 201911146

Date Received: 4 Dec 2019  
Date Sampled: 4 Dec 2019  
Temperature at Receipt: 19.6C

PROJECT NAME: CREEK VALLEY ELEM.  
PROJECT NUMBER: 201911146

LAB NUMBER	SAMPLE DESCRIPTION	LEAD RESULTS	MCL	DATE ANALYZED	ANALYST
19-A61614	12042019CVE-48 ROOM 510 SINK	0.99 ug/L	15.0	10 Dec 19	KAM
19-A61615	12042019CVE-49 ROOM 509G SINK	1.29 ug/L	15.0	10 Dec 19	KAM
19-A61616	12042019CVE-50 NURSE (505) SINK	0.95 ug/L	15.0	10 Dec 19	KAM
19-A61617	12042019CVE-51 ROOM 503 SINK	0.86 ug/L	15.0	10 Dec 19	KAM
19-A61618	12042019CVE-52 ROOM 103 SINK	0.63 ug/L	15.0	10 Dec 19	KAM
19-A61619	12042019CVE-53 ROOM 103 DF	< 0.5 ug/L	15.0	13 Dec 19	KAM
19-A61620	12042019CVE-54 ROOM 104 SINK	< 0.5 ug/L	15.0	13 Dec 19	KAM
19-A61621	12042019CVE-56 ROOM 105 SINK	1.04 ug/L	15.0	13 Dec 19	KAM

Approved by:

Dan O'Connell

David Smahel

Chemistry Laboratory Managers New Ulm, MN

Page: 7

Analyses performed under our Minnesota Department of Health Accreditation conform to the current TNI standards. The reporting limit was elevated for any analyte requiring a dilution as coded below:

@ = Due to sample matrix

# = Due to concentration of other analytes

! = Due to sample quantity

+ = Due to internal standard response

CERTIFICATION: MN LAB # 027-015-125 ND WW/DW # R-040



# MINNESOTA VALLEY TESTING LABORATORIES, INC.

1126 N. Front St. ~ New Ulm, MN 56073 ~ 800-782-3557 ~ Fax 507-359-2890

2616 E. Broadway Ave. ~ Bismarck, ND 58501 ~ 800-279-6885 ~ Fax 701-258-9724

1201 Lincoln Highway ~ Nevada, IA 50201 ~ 800-362-0855 ~ Fax 515-382-3885

www.mvttl.com

MEMBER

ACIL

Report Date: 16 Dec 2019

HEIDI SOLBERG  
IEA/BROOKLYN PARK  
9201 W BDWY STE #600  
BROOKLYN PARK MN 55445

Work Order #: 12-18694  
Account #: 002190  
Purchase Order #: 201911146

Date Received: 4 Dec 2019  
Date Sampled: 4 Dec 2019  
Temperature at Receipt: 19.6C

PROJECT NAME: CREEK VALLEY ELEM.  
PROJECT NUMBER: 201911146

LAB NUMBER	SAMPLE DESCRIPTION	LEAD RESULTS	MCL	DATE ANALYZED	ANALYST
19-A61622	12042019CVE-57 ROOM 105 DF	< 0.5 ug/L	15.0	10 Dec 19	KAM
19-A61623	12042019CVE-58 HALLWAY BY 105 WC	< 0.5 ug/L	15.0	10 Dec 19	KAM
19-A61624	12042019CVE-59 HALLWAY BY 105 BF	< 0.5 ug/L	15.0	10 Dec 19	KAM
19-A61625	12042019CVE-60 ROOM 108 SINK	0.87 ug/L	15.0	10 Dec 19	KAM
19-A61626	12042019CVE-61 ROOM 108 DF	< 0.5 ug/L	15.0	13 Dec 19	KAM
19-A61627	12042019CVE-62 ROOM 109 SINK	0.96 ug/L	15.0	13 Dec 19	KAM
19-A61628	12042019CVE-63 ROOM 109 DF	< 0.5 ug/L	15.0	10 Dec 19	KAM
19-A61629	12042019CVE-64	0.87 ug/L	15.0	13 Dec 19	KAM

Approved by:

Dan O'Connell

David Smahel

Chemistry Laboratory Managers New Ulm, MN

Page: 8

Analyses performed under our Minnesota Department of Health Accreditation conform to the current TNI standards. The reporting limit was elevated for any analyte requiring a dilution as coded below:

@ = Due to sample matrix

# = Due to concentration of other analytes

! = Due to sample quantity

+ = Due to internal standard response

CERTIFICATION: MN LAB # 027-015-125 ND WW/DW # R-040



# MINNESOTA VALLEY TESTING LABORATORIES, INC.

1126 N. Front St. ~ New Ulm, MN 56073 ~ 800-782-3557 ~ Fax 507-359-2890

2616 E. Broadway Ave. ~ Bismarck, ND 58501 ~ 800-279-6885 ~ Fax 701-258-9724

1201 Lincoln Highway ~ Nevada, IA 50201 ~ 800-362-0855 ~ Fax 515-382-3885

www.mvttl.com

MEMBER

ACIL

Report Date: 16 Dec 2019

HEIDI SOLBERG  
IEA/BROOKLYN PARK  
9201 W BDWY STE #600  
BROOKLYN PARK MN 55445

Work Order #: 12-18694  
Account #: 002190  
Purchase Order #: 201911146

Date Received: 4 Dec 2019  
Date Sampled: 4 Dec 2019  
Temperature at Receipt: 19.6C

PROJECT NAME: CREEK VALLEY ELEM.  
PROJECT NUMBER: 201911146

LAB NUMBER	SAMPLE DESCRIPTION	LEAD RESULTS	MCL	DATE ANALYZED	ANALYST
	ROOM 110 SINK				
19-A61630	12042019CVE-65 ROOM 110 DF	< 0.5 ug/L	15.0	10 Dec 19	KAM
19-A61631	12042019CVE-66 ROOM 201 SINK	0.54 ug/L	15.0	10 Dec 19	KAM
19-A61632	12042019CVE-67 ROOM 201 DF	< 0.5 ug/L	15.0	10 Dec 19	KAM
19-A61633	12042019CVE-68 ROOM 102 SINK	6.57 ug/L	15.0	10 Dec 19	KAM
19-A61634	12042019CVE-69 ROOM 106 SINK LEFT	1.71 ug/L	15.0	13 Dec 19	KAM
19-A61635	12042019CVE-70 ROOM 106 SINK RIGHT	1.58 ug/L	15.0	13 Dec 19	KAM
19-A61636	12042019CVE-71 ROOM 227 SINK	22.7 ug/L	15.0	10 Dec 19	KAM

Approved by:

Dan O'Connell

David Smahel

Chemistry Laboratory Managers New Ulm, MN

Page: 9

Analyses performed under our Minnesota Department of Health Accreditation conform to the current TNI standards. The reporting limit was elevated for any analyte requiring a dilution as coded below:

@ = Due to sample matrix

# = Due to concentration of other analytes

! = Due to sample quantity

+ = Due to internal standard response

CERTIFICATION: MN LAB # 027-015-125 ND WW/DW # R-040



# MINNESOTA VALLEY TESTING LABORATORIES, INC.

1126 N. Front St. ~ New Ulm, MN 56073 ~ 800-782-3557 ~ Fax 507-359-2890

2616 E. Broadway Ave. ~ Bismarck, ND 58501 ~ 800-279-6885 ~ Fax 701-258-9724

1201 Lincoln Highway ~ Nevada, IA 50201 ~ 800-362-0855 ~ Fax 515-382-3885

www.mvttl.com

MEMBER

ACIL

Report Date: 16 Dec 2019

HEIDI SOLBERG  
IEA/BROOKLYN PARK  
9201 W BDWY STE #600  
BROOKLYN PARK MN 55445

Work Order #: 12-18694  
Account #: 002190  
Purchase Order #: 201911146

Date Received: 4 Dec 2019  
Date Sampled: 4 Dec 2019  
Temperature at Receipt: 19.6C

PROJECT NAME: CREEK VALLEY ELEM.  
PROJECT NUMBER: 201911146

LAB NUMBER	SAMPLE DESCRIPTION	LEAD RESULTS	MCL	DATE ANALYZED	ANALYST
19-A61637	12042019CVE-72 ROOM 213 SINK	1.73 ug/L	15.0	10 Dec 19	KAM
19-A61638	12042019CVE-73 GYM SE DF	1.30 ug/L	15.0	10 Dec 19	KAM
19-A61639	12042019CVE-74 ROOM 206 LEFT SINK	2.76 ug/L	15.0	10 Dec 19	KAM
19-A61640	12042019CVE-76 ROOM 206 RIGHT SINK	5.01 ug/L	15.0	10 Dec 19	KAM
19-A61641	12042019CVE-77 ROOM 206 SPRAYER	98.3 ~ug/L	15.0	13 Dec 19	KAM
~Sample diluted due to result above calibration or linear range.					
19-A61642	12042019CVE-78 HALLWAY BY 206 WC	< 0.5 ug/L	15.0	10 Dec 19	KAM
19-A61643	12042019CVE-79 HALLWAY BY 206 BF	< 0.5 ug/L	15.0	10 Dec 19	KAM

Approved by:

Dan O'Connell

Chemistry Laboratory Managers New Ulm, MN

David Smahel

Analyses performed under our Minnesota Department of Health Accreditation conform to the current TNI standards.  
The reporting limit was elevated for any analyte requiring a dilution as coded below:

@ = Due to sample matrix  
! = Due to sample quantity

# = Due to concentration of other analytes  
+ = Due to internal standard response

CERTIFICATION: MN LAB # 027-015-125 ND WW/DW # R-040





# MINNESOTA VALLEY TESTING LABORATORIES, INC.

1126 N. Front St. ~ New Ulm, MN 56073 ~ 800-782-3557 ~ Fax 507-359-2890

2616 E. Broadway Ave. ~ Bismarck, ND 58501 ~ 800-279-6885 ~ Fax 701-258-9724

1201 Lincoln Highway ~ Nevada, IA 50201 ~ 800-362-0855 ~ Fax 515-382-3885

www.mvttl.com

MEMBER

ACIL

Report Date: 16 Dec 2019

HEIDI SOLBERG  
IEA/BROOKLYN PARK  
9201 W BDWY STE #600  
BROOKLYN PARK MN 55445

Work Order #: 12-18694  
Account #: 002190  
Purchase Order #: 201911146

Date Received: 4 Dec 2019  
Date Sampled: 4 Dec 2019  
Temperature at Receipt: 19.6C

PROJECT NAME: CREEK VALLEY ELEM.  
PROJECT NUMBER: 201911146

LAB NUMBER	SAMPLE DESCRIPTION	LEAD RESULTS	MCL	DATE ANALYZED	ANALYST
19-A61644	12042019CVE-80 ROOM 210 SINK	1.14 ug/L	15.0	13 Dec 19	KAM
19-A61645	12042019CVE-81 ROOM 210 DF	< 0.5 ug/L	15.0	10 Dec 19	KAM
19-A61646	12042019CVE-82 ROOM 209 SINK	0.72 ug/L	15.0	13 Dec 19	KAM
19-A61647	12042019CVE-83 ROOM 209 DF	< 0.5 ug/L	15.0	10 Dec 19	KAM
19-A61648	12042019CVE-84 ROOM 208 SINK	2.09 ug/L	15.0	13 Dec 19	KAM
19-A61649	12042019CVE-85 ROOM 208 DF	0.90 ug/L	15.0	10 Dec 19	KAM
19-A61650	12042019CVE-86 ROOM 205 SINK	1.32 ug/L	15.0	13 Dec 19	KAM
19-A61651	12042019CVE-87 ROOM 205 DF	< 0.5 ug/L	15.0	11 Dec 19	KAM

Approved by:

Dan O'Connell

David Smahel

Chemistry Laboratory Managers New Ulm, MN

Page: 11

Analyses performed under our Minnesota Department of Health Accreditation conform to the current TNI standards. The reporting limit was elevated for any analyte requiring a dilution as coded below:

@ = Due to sample matrix

# = Due to concentration of other analytes

! = Due to sample quantity

+ = Due to internal standard response

CERTIFICATION: MN LAB # 027-015-125 ND WW/DW # R-040



# MINNESOTA VALLEY TESTING LABORATORIES, INC.

1126 N. Front St. ~ New Ulm, MN 56073 ~ 800-782-3557 ~ Fax 507-359-2890

2616 E. Broadway Ave. ~ Bismarck, ND 58501 ~ 800-279-6885 ~ Fax 701-258-9724

1201 Lincoln Highway ~ Nevada, IA 50201 ~ 800-362-0855 ~ Fax 515-382-3885

www.mvttl.com

MEMBER

ACIL

Report Date: 16 Dec 2019

HEIDI SOLBERG  
IEA/BROOKLYN PARK  
9201 W BDWY STE #600  
BROOKLYN PARK MN 55445

Work Order #: 12-18694  
Account #: 002190  
Purchase Order #: 201911146

Date Received: 4 Dec 2019  
Date Sampled: 4 Dec 2019  
Temperature at Receipt: 19.6C

PROJECT NAME: CREEK VALLEY ELEM.  
PROJECT NUMBER: 201911146

LAB NUMBER	SAMPLE DESCRIPTION	LEAD RESULTS	MCL	DATE ANALYZED	ANALYST
19-A61652	12042019CVE-88 ROOM 202 SINK	8.23 ug/L	15.0	11 Dec 19	KAM
19-A61653	12042019CVE-89 ROOM 204 SINK	0.92 ug/L	15.0	13 Dec 19	KAM
19-A61654	12042019CVE-90 ROOM 204 DF	< 0.5 ug/L	15.0	11 Dec 19	KAM
19-A61655	12042019CVE-91 ROOM 203 SINK	0.86 ug/L	15.0	13 Dec 19	KAM
19-A61656	12042019CVE-92 ROOM 203 DF	< 0.5 ug/L	15.0	11 Dec 19	KAM

Approved by:

Dan O'Connell

David Smahel

Chemistry Laboratory Managers New Ulm, MN

Page: 12

Analyses performed under our Minnesota Department of Health Accreditation conform to the current TNI standards. The reporting limit was elevated for any analyte requiring a dilution as coded below:

@ = Due to sample matrix

# = Due to concentration of other analytes

! = Due to sample quantity

+ = Due to internal standard response

CERTIFICATION: MN LAB # 027-015-125 ND WW/DW # R-040



# MINNESOTA VALLEY TESTING LABORATORIES, INC.

1126 N. Front St. ~ New Ulm, MN 56073 ~ 800-782-3557 ~ Fax 507-359-2890

2616 E. Broadway Ave. ~ Bismarck, ND 58501 ~ 800-279-6885 ~ Fax 701-258-9724

1201 Lincoln Highway ~ Nevada, IA 50201 ~ 800-362-0855 ~ Fax 515-382-3885

www.mvttl.com

MEMBER  
ACIL

Report Date: 24 Feb 2020

Lab Number: 20-A6564

Work Order #: 202012-4516

Account #: 002190

PO #: 201810599

Date Received: 18 Feb 2020

Time Received: 9:10

Date Sampled: 12 Feb 2020

Project Number: 201810599

Temperature at Receipt: AMBIENT

HEIDI SOLBERG

IEA/BROOKLYN PARK

9201 W BDWY STE #600

BROOKLYN PARK MN 55445

Project Name: CREEK VALLEY ELEM.

Sample Description: 2122020CVE-1 ROOM 224 SINK

MF 2-12-2020

Analyte	Results	MCL	RAL	Method	Analyzed	Analyst
Lead	1.55 ug/L	15.0	NA	200.8	2/21/20 10:58	RMV

\*\* No collection time supplied by the client.

MCL is defined as the Maximum Contaminant Level allowed by the Safe Drinking Water Act. RAL is the Recommended Allowable Limit. For further information, contact your state or local health department or call the EPA Safe Drinking Water Hotline 1-800-426-4791.

Approved by:

  
Dan O'Connell

  
David Smahel

Chemistry Laboratory Managers New Ulm, MN

Analyses performed under our Minnesota Department of Health Accreditation conform to the current TNI standards.

The reporting limit was elevated for any analyte requiring a dilution as coded below:

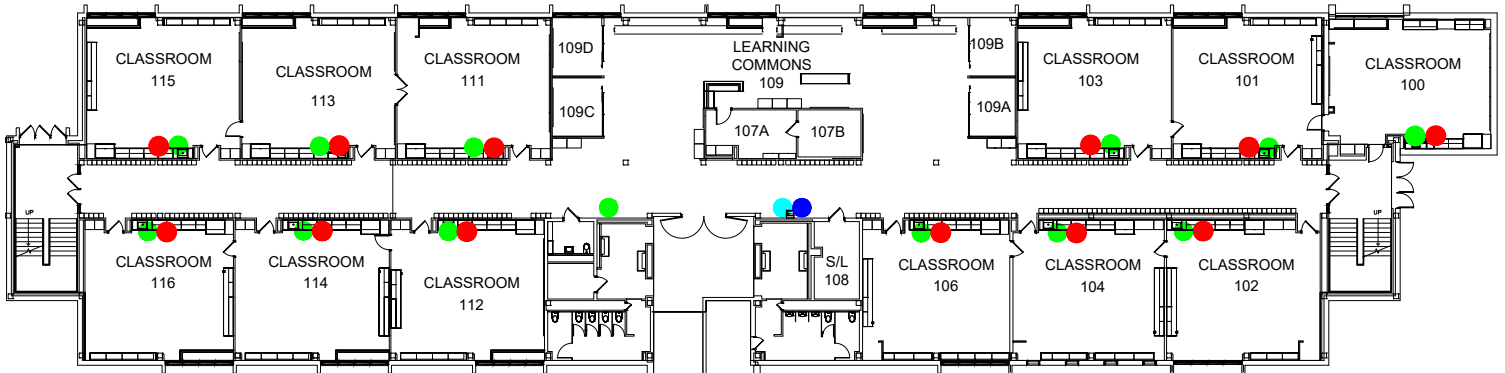
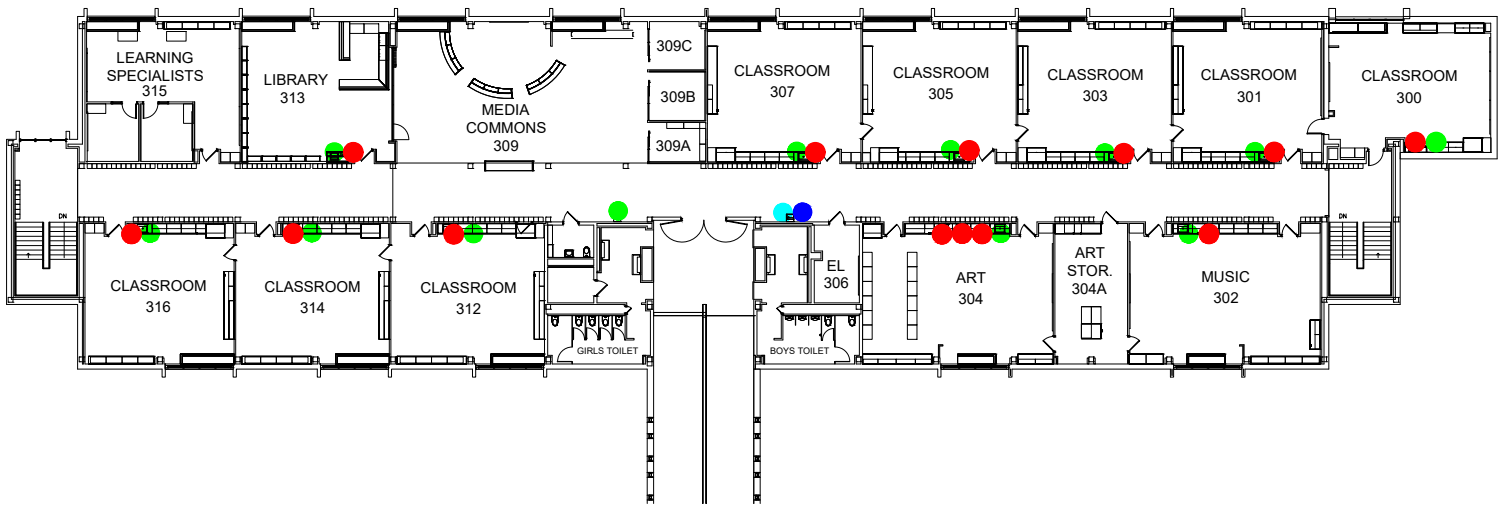
@ = Due to sample matrix

# = Due to concentration of other analytes

! = Due to sample quantity

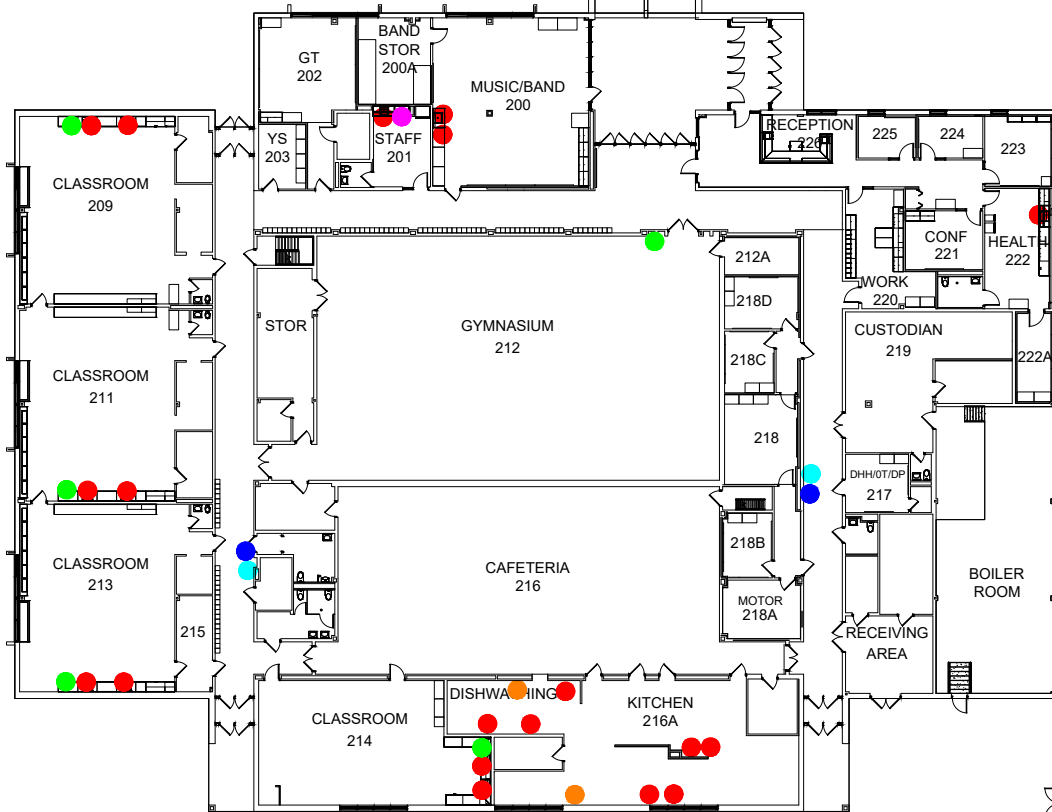
+ = Due to internal standard response

CERTIFICATION: MN LAB # 027-015-125 ND WW/DW # R-040



## LEGEND

- SINK
- HOT WATER DISPENSER
- WATER BOTTLE FILLER
- DRINKING FOUNTAIN
- SPRAYER
- WATER COOLER



# LEGEND

- SINK
- HOT WATER DISPENSER
- WATER BOTTLE FILLER
- DRINKING FOUNTAIN
- SPRAYER
- WATER COOLER
- STEAMER

