

A large rainbow parachute is being held up by children in a classroom. The parachute is made of many colorful panels (red, orange, yellow, green, blue, purple) and is being held up by several children whose legs and feet are visible at the bottom. The background is a blurred classroom setting with wooden chairs and a carpeted floor.

# Community Meeting #2

## Pleasanton USD Transitional Kindergarten Classroom Buildings

WALNUT GROVE ELEMENTARY SCHOOL

June 11, 2024

IHED



# Introduction

- **Pleasanton Unified School District**
  - John Chwastyk, Executive Director of Facilities and Construction
  - Aaron Kael, Assistant Director of Facilities and Construction
- **Van Pelt Construction Services (Bond Program Managers)**
  - Eric Van Pelt, Program Manager
  - Jenny Choi, Project Manager
- **HED - Architect**
  - Rob Filary, Principal in Charge

# Meeting Expectations & Goals

- **Goals**

- Provide the community with information on the New TK Grade Level & new classroom buildings
- Discuss why new TK Classrooms are needed
- Receive comments from the community

- **Meeting Goals and Norms**

- Please hold all questions until the end of the presentation.
- Tonight's meeting is in person and on Zoom. Please raise your hand if you have comments and we will pass the microphone to you. This will ensure Zoom attendees are able to hear.
- Staff will stay as late as needed to ensure that all attendees have an opportunity to ask questions and share concerns.
- Staff will address any unanswered questions at a later date.

# Background

- **District Wide Transitional Kindergarten (TK) Expansion Projects were part of Measure I-1 and Bond Measure I Bonds**
  - Fairlands ES and Donlon ES are the first two sites scheduled to be completed in the TK Expansion Project
  - Completed over 15 Meetings with Site Committee and Administration
  - Demographic Survey to support enrollment rate
- **What is TK?**
  - The Universal Transitional Kindergarten (TK) program is a newly implemented State program that provides early childhood education to all 4-year-olds. This will add an additional grade level to all elementary schools.
- **Why New TK Buildings**
  - Larger classrooms with restrooms and specialty playground equipment
- **How Will This Impact the Site**
  - 1 Current TK classroom with 24 students
  - 3 total new classrooms (2 classrooms net add)
  - By 2026, anticipated school enrollment with TK will be less than 2022/23 school year

# Walnut Grove Elementary School TK Classrooms

# Walnut Grove Elementary School | Facilities Master Plan

Proposed Master Plan Diagram

WALNUT GROVE ELEMENTARY SCHOOL



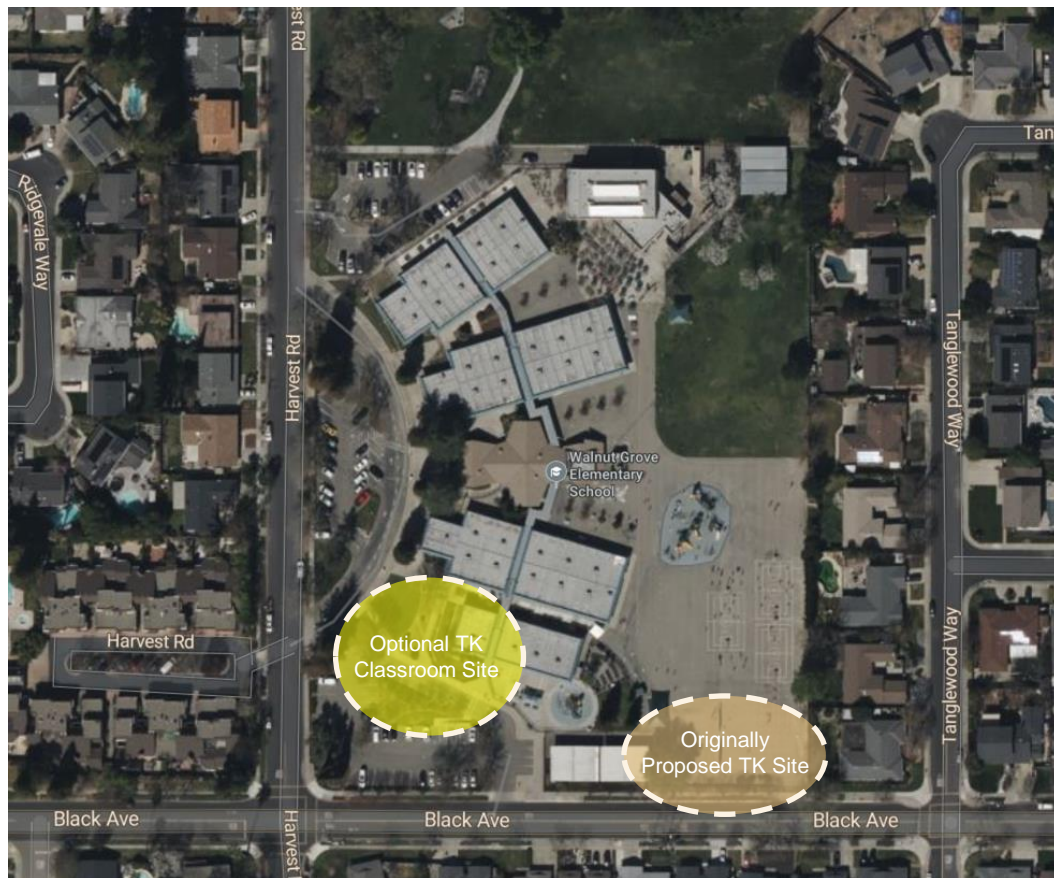
<b>Classrooms</b>	
#	Indicates Grade Level
TK	Transitional Kindergarten
K	Kindergarten
SDC	Special Education:
M/M	Mild/Moderate
M/S	Moderate/Severe
<b>Electives / Labs</b>	
EXP	Exploration Lab
FLEX	Flex Lab
MU	Music Room
<b>Shared Spaces</b>	
MPR	Multi-Purpose Room
LIB	Library
SERV	Serving Area (Food Service)
<b>Student Services</b>	
LC	Learning Center
RSP	Resource Specialist
SP	Speech
<b>Admin / Faculty</b>	
CO	Conference
FL	Faculty Lounge
FW	Faculty Workroom
H	Health Room
KIT	Kitchen (Food Service)
M	Main Office / Front Desk
O	Office
WR	Satellite Faculty Workroom
<b>Leased Spaces / Other</b>	
EDCC	Extended Day Child Care (Leased)
<b>Support Spaces</b>	
ST	Storage
T	Toilet/Restroom
U	Utility
C	Custodian
★ Main Entry    ●●●● New Fencing	
→ Drop-Off	
<b>Teaching Stations:</b>	
PS (Preschool)	0
TK (Transitional Kinder)	5
Kindergarten	5
Grades 1-3	14
Grades 4-5	7
SDC mild/mod	0
SDC mod/sev	1
<b>Sub-Total:</b>	<b>32</b>
<b>Additional Spaces:</b>	
Exploration Lab / Music / Art	3
After School Care	2
<b>Total:</b>	<b>37</b>



# Walnut Grove Elementary School | Site Map

## WHAT WE HEARD

- TK Entry on Black Avenue could lead to additional drop-off traffic congestion.
- Desire not to lose existing playground area along Black Avenue.
- Is there another site area on the Campus that is underutilized?
- Investigate TK Classrooms at the southwest corner of the site

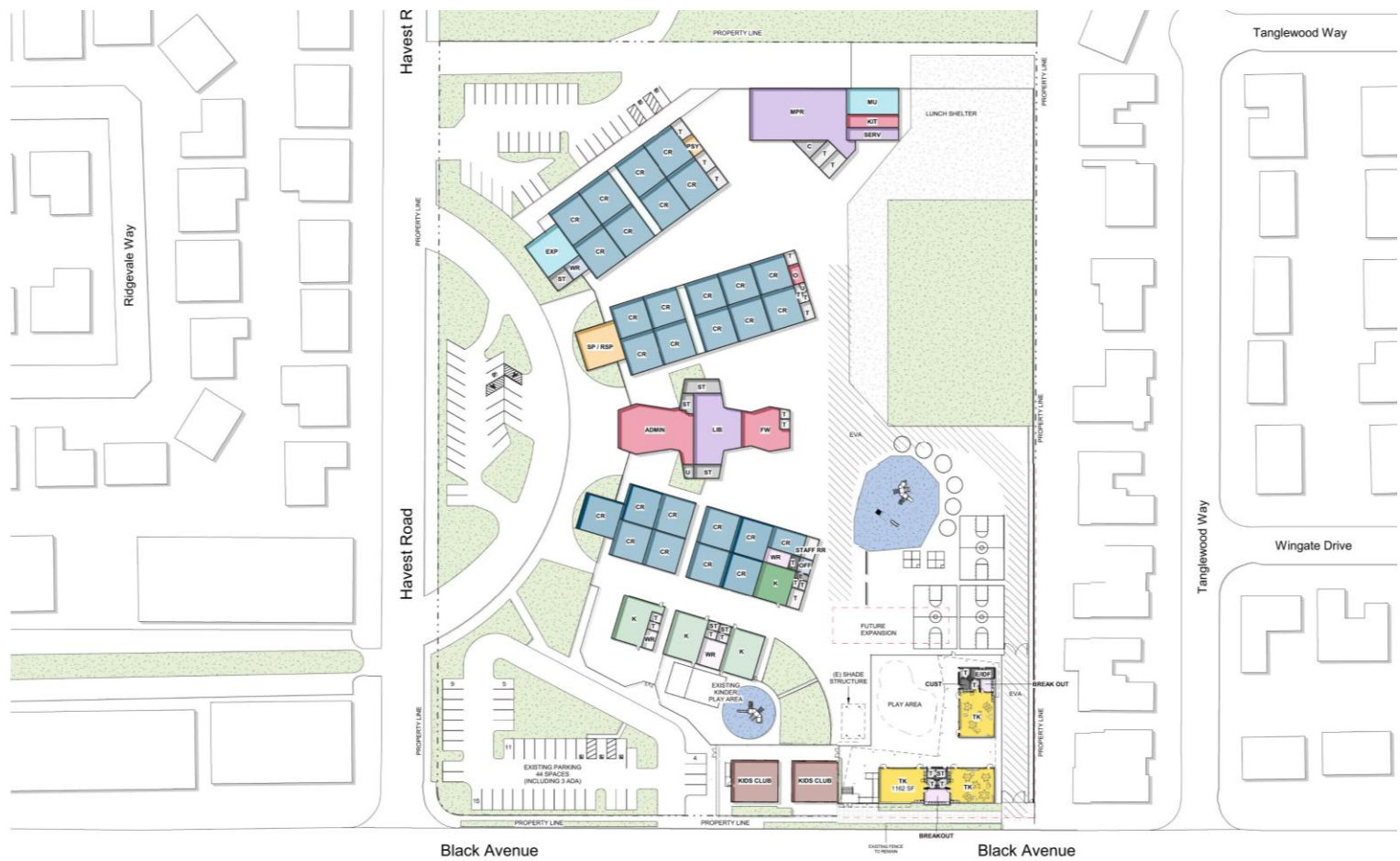


# Walnut Grove Elementary School | Originally Proposed Site





# Walnut Grove Elementary School | Originally Proposed Site Plan



# Walnut Grove Elementary School | Enlarged Site Plan

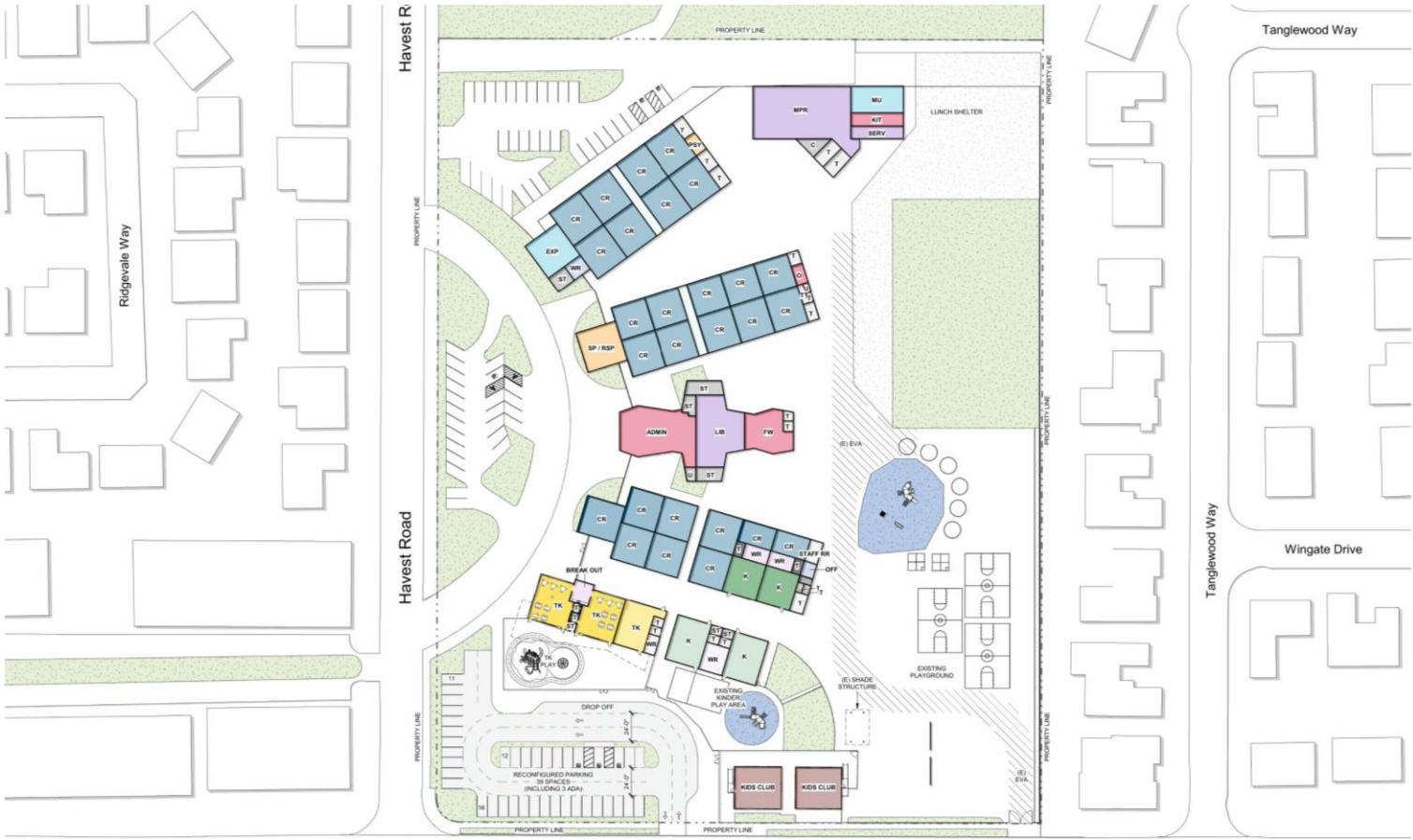


# Walnut Grove Elementary School | New Site Option





# Walnut Grove Elementary School | New Site Plan Option





# Walnut Grove Elementary School | Enlarged Site Plan



## Next Steps

- Complete Design and submit for DSA approval in Spring 2025
- Community Outreach Meeting & Start of Construction in Fall 2025
- Tentative Construction Completed in Fall 2026

# Questions:

Email: [Eric@vpcsonline.com](mailto:Eric@vpcsonline.com)