

LEA Name : Pine-Richland SD
Address : 702 Warrendale Rd
Gibsonia, PA 15044

County : Allegheny
AUN Number : 103021003
LEA Type : SD

Annual Financial Report Accuracy Certification Statement

For Fiscal Year Ending
6/30/2023

Pennsylvania Department of Education
&

Office of Comptroller Operations

PDE-2056: Intermediate Unit
PDE-2057: School District, AVTS/CTC, Charter School,
and Special Program Jointure

CERTIFICATION: By signing this page I agree that the electronic data submitted is a complete and accurate statement of the financial operations and status of the local education agency for the fiscal year. It has been prepared in accordance with generally accepted accounting principles and established Commonwealth of PA reporting guidelines.



Chief School Administrator Signature

Date

10/31/23



Board Secretary Signature

Date

10/31/23

Christopher Juzwick

(724)625-7773 Ext :6303

Contact Person

Contact Person Telephone Number

cjuzwick@pinerichland.org

(724)625-1490

Contact Person E-mail Address

Contact Person Fax Number

Audit Certification

Annual Financial Report:

For Fiscal Year Ending 6/30/2023

(Pursuant to PA School Code Section 218(b))

LEA Name : Pine-Richland SD
AUN Number : 103021003
County : Allegheny

Audit Certification Due:
12/31/2023

This certification is applicable to the Annual Financial Report data submitted through the Consolidated Financial Reporting System (CFRS).

CERTIFICATION: By signing this page I agree that the financial statements of the school have been properly audited as noted above pursuant to Article XIV, and in the auditor's professional opinion, the Annual Financial Report (PDE-2057) submitted through CFRS is materially consistent with the audited financial statements.

Chief School Administrator


Signature

1/29/23
Date

Board Secretary


Signature

11/29/23
Date

Christopher Juzwick

Contact Person

cjuzwick@pinerichland.org

Contact Person E-mail Address

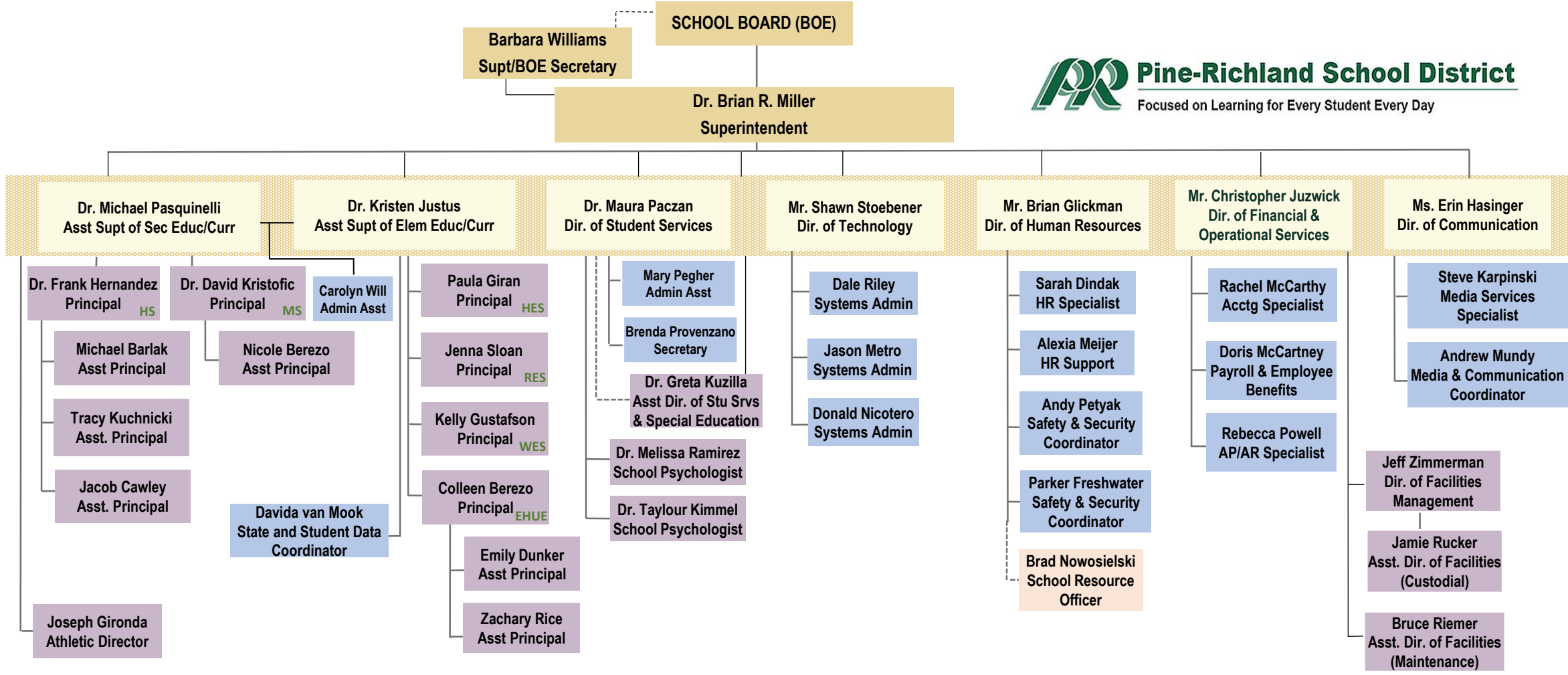
(724)625-7773

Contact Person Telephone Number

Ext : 6303

(724)625-1490

Contact Person Fax Number



ALCs

BLT-Cs

STAFF

STRATEGIC INITIATIVE LEADERSHIP COUNCIL(S)

*The structure is currently under review to determine which one of these two positions will be considered.



Book	Policy Manual
Section	600 Finances
Title	GASB Statement 34
Code	622
Status	Active
Adopted	January 20, 2009
Last Reviewed	March 1, 2021
Prior Revised Dates	4/20/2015

Purpose

The Board recognizes the need to implement the required accounting and financial reporting standards stipulated by the Pennsylvania Department of Education.

The primary objectives of implementing the GASB Statement 34 are to assure compliance with state requirements, and properly account for both the financial and economic resources of the district.

Authority

Participation of the school district in any such activity shall be in accordance with Board policy and the Governmental Accounting Standards Board, Statement Number 34.[\[1\]](#)[\[2\]](#)

Delegation of Responsibility

The responsibility to coordinate the compilation and preparation of all information necessary to implement this policy is delegated to the Director of Financial and Operational Services or his/her designee.

The designated individual shall be responsible for implementing the necessary procedures to establish and maintain a fixed asset inventory, including depreciation schedules. Depreciation shall be directly reported to the appropriate Fund-Function account code, when applicable. Depreciation that cannot be directly reported may be allocated using generally accepted and approved methods of allocation (i.e. percentage of square footage, percentage of time used/occupied, etc.) if possible. Any remaining depreciation may be recorded as unallocated. Depreciation shall be computed on a straight-line basis over the useful lives of the assets, using an averaging convention. Normal maintenance and repairs shall be charged to expense as incurred; major renewals and betterments that materially extend the life or increase the value of the asset shall be capitalized. A schedule of accumulated depreciation shall be consistent from year to year.

The Director of Financial and Operational Services or his/her designee shall prepare the required Management Discussion and Analysis (MD&A). The MD&A shall be in the form required by GASB Statement Number 34.

The school district's independent auditors shall review the MD&A, in accordance with SAS No. 52, "Required Supplementary Information."

Guidelines

In order to associate debt with acquired assets and to avoid net asset deficits, any asset that has been acquired with debt proceeds shall be capitalized, regardless of the cost of the asset. The asset life of these assets shall be considered relative to the time of the respective debt amortizations.

For all other assets not acquired by debt proceeds, the dollar value of any single item for inclusion in the fixed assets accounts shall be not less than \$5,000.

Depreciable capital assets are nonconsumable material purchases with a life expectancy of greater than one (1) year. The actual useful life will be based upon specific utilization. Items may be grouped by year of acquisition and include: buildings, building improvements, portable classrooms, vehicles, leasehold improvements, technology, audiovisual equipment, kitchen equipment, athletic equipment, musical instruments, library books, maintenance and grounds equipment, and furniture and fixtures.

Nondepreciable capital assets include: land; land improvements (cost incurred to ready land for its intended use and that does not lose its value such as excavation, fill grading, landscaping, etc.); construction-in-progress; easements; rights of way; historical treasures; and works of art.

Infrastructure assets are long-lived capital assets that normally can be preserved for a significantly greater number of years than most capital assets. Infrastructure assets are normally stationary in nature, such as roads and bridges. Buildings, except those that are an ancillary part of a network of infrastructure assets, should not be considered infrastructure assets. Other examples of noninfrastructure assets that are incidental to a school's property include: fencing, retaining walls, irrigation systems, athletic courts, fields and tracks, private use sewer facilities and water lines, area lighting, drives, parking lots, sidewalks, curbs, and gutters.

Management should consider, in conjunction with the local auditor, the use of salvage value on those capitalized assets that have a resale value at the end of their useful life.

All capitalized assets shall be recorded at historical cost at acquisition date. For any asset acquired prior to the date of initial inventory, historical cost will be established based on replacement cost indexed backwards to the date of acquisition. These estimates will be performed by an authorized outside agency or Board-authorized valuation firm.

Capital assets that are sold or disposed of will be removed from the district's inventory tracking database. Depreciation will be calculated and recorded to the date of sale or disposition. Resulting differences in proceeds/deficits will be recorded as a Gain/Loss, respectively, on the sale or disposition of the asset.

Donated assets, gifts of property, shall be recorded at fair market value at the time of receipt.

Assets that fall below the capitalization threshold for GASB 34 reporting purposes may still be significant for insurance, warranty service, and obsolescence/replacement policy tracking purposes. The district may record and maintain these non-GASB 34 asset inventories in subsidiary ledgers.

Legal

[1. 24 P.S. 218](#)

[2. 24 P.S. 613](#)

Governmental Accounting Standards Board, Statement No. 34

<u>Val Number</u>	<u>Description</u>	<u>Justification</u>
30116	<p>Revenue Detail: A large amount has been reported as Earnings on Investments in Fund 32, account 6500, which should only include interest earnings of this fund. Correct or provide a brief explanation of the revenue reported.</p> <p>Revenue Detail 6500, Fund 32: \$367,159.00</p>	<p>All interest earnings from fund 32 were from liquid accounts. The total interest earning was large due to the high interest rates in 2022-2023 fiscal year.</p>
41110	<p>Expenditure Detail - There is an entry in function 5110-990 object "Other". Please explain what constitutes "Other". Note: Bond issuance costs, underwriter's discounts, and paying agent fees should be coded to 2390-810.</p> <p>Expenditure 5110-990, Fund 39: \$1,209,654.00</p>	<p>Back in 2004, all swap proceeds were deposited into a capital projects fund (internal - fund 34 / AFR - fund 39) and held separately from general fund activity. This is a swap termination fee paid during the fiscal year from the proceeds which were held.</p>
50160	<p>SOIN: All Governmental Fund General Obligation Bonds must include an amount for Interest Paid during Fiscal Year. Correct data or enter a justification.</p>	<p>No Interest was paid on the 1996 CABS General Obligation Bond</p>
50271	<p>SOIN: Payment of Accreted Interest for General Obligation Bonds/Notes-Capital Appreciation Bonds (GOB-CAB) must be reported consistently within two separate data entry fields in the SOIN: (1) Debt Details-Interest Paid During FY, and (2) Accreted Interest Detail-Reductions During FY. The data reported in these two fields is not comparable. Please correct or provide a justification.</p> <p>SOIN: Govt Funds, GOB – CAB, Debt Details-Principal and Interest: Interest Paid During FY: \$0.00 SOIN: Govt Funds, GOB – CAB, Accreted Interest Detail: Reductions During FY: \$2,435,961.00</p>	<p>No Interest was paid on the 1996 CABS General Obligation Bond</p>
50450	<p>SESS - 2350 Legal and Accounting Services: SESS Schedule amounts for Special Education vary from prior year by 40% or more. Correct the data or enter a justification.</p> <p>SESS Schedule 2350: \$35,444.00 Prior Year SESS Schedule 2350: \$24,662.00</p>	<p>Although there was an increase in Legal and Accounting Services is 40% the increase is \$10,782. This could be one Due Process case in relation.</p>

Amounts Expressed in Whole Dollars

	<u>General Fund</u> <u>(10)</u>	<u>Student Sponsored</u> <u>Activity Fund</u> <u>(21)</u>	<u>Public Purpose Trust</u> <u>(27)</u>	<u>Other Compt Approved</u> <u>(28)</u>	<u>Athletic / Activity</u> <u>(29)</u>
Assets And Deferred Outflows Of Resources					
Assets					
0100 Cash and Cash Equivalents	7,155,656				
0110 Investments	35,097,678				
0120 Taxes Receivable	1,411,881				
0130 Due From Other Funds					
0141 Due From Other Governments	77,407				
0142 State Revenue Receivable	3,228,618				
0143 Federal Revenue Receivable	398,042				
0145 Other Intergovernmental Revenue Receivable					
0146 Due from Primary Government					
0147 Due from Component Unit					
0150 Other Receivables	46,281				
0170 Inventories					
0180 Prepaid Expenses (Expenditures)	898,299				
0190 Other Current Assets					
Total Assets	\$48,313,862				
0910 Deferred Outflows of Resources					
Total Assets And Deferred Outflows Of Resources	\$48,313,862				

Amounts Expressed in Whole Dollars

<u>Capital Reserve (690.</u>	<u>Capital Reserve (1431)</u>	<u>Other Capital Projects</u>	<u>Debt Service</u>	<u>Permanent</u>
<u>1850)</u>	<u>(32)</u>	<u>Fund</u>	<u>(40)</u>	<u>(90)</u>
<u>(31)</u>		<u>(39)</u>		

Assets And Deferred Outflows Of Resources

Assets

0100 Cash and Cash Equivalents		559,610
0110 Investments		10,109,313
0120 Taxes Receivable		
0130 Due From Other Funds		26,924
0141 Due From Other Governments		
0142 State Revenue Receivable		
0143 Federal Revenue Receivable		
0145 Other Intergovernmental Revenue Receivable		
0146 Due from Primary Government		
0147 Due from Component Unit		
0150 Other Receivables		148,815
0170 Inventories		
0180 Prepaid Expenses (Expenditures)		
0190 Other Current Assets		

Total Assets	\$10,844,662
---------------------	---------------------

0910 Deferred Outflows of Resources

Total Assets And Deferred Outflows Of Resources	\$10,844,662
--	---------------------

Amounts Expressed in Whole Dollars

Total Governmental Funds

Assets And Deferred Outflows Of Resources

Assets	
0100 Cash and Cash Equivalents	7,715,266
0110 Investments	45,206,991
0120 Taxes Receivable	1,411,881
0130 Due From Other Funds	26,924
0141 Due From Other Governments	77,407
0142 State Revenue Receivable	3,228,618
0143 Federal Revenue Receivable	398,042
0145 Other Intergovernmental Revenue Receivable	
0146 Due from Primary Government	
0147 Due from Component Unit	
0150 Other Receivables	195,096
0170 Inventories	
0180 Prepaid Expenses (Expenditures)	898,299
0190 Other Current Assets	
Total Assets	\$59,158,524
0910 Deferred Outflows of Resources	
Total Assets And Deferred Outflows Of Resources	\$59,158,524

Amounts Expressed in Whole Dollars

	<u>General Fund</u> <u>(10)</u>	<u>Student Sponsored</u> <u>Activity Fund</u> <u>(21)</u>	<u>Public Purpose Trust</u> <u>(27)</u>	<u>Other Compt Approved</u> <u>(28)</u>	<u>Athletic / Activity</u> <u>(29)</u>
Liabilities And Deferred Inflows Of Resources And Fund Balances					
Liabilities					
0400 Due to Other Funds	26,924				
0411 Due to Other Governments					
0412 Due to Primary Government					
0413 Due to Component Unit					
0420 Accounts Payable	603,560				
0430 Contracts Payable	111,835				
0440 Current Portion of Long-Term Debt					
0450 Short-Term Payables					
0461 Accrued Salaries and Benefits	10,012,297				
0462 Payroll Deductions and Withholding					
0480 Unearned Revenues					
0490 Other Current Liabilities					
Total Liabilities	\$10,754,616				
0950 Deferred Inflows of Resources	1,173,083				
Fund Balances					
0810 Nonspendable Fund Balance	898,299				
0820 Restricted Fund Balance					
0830 Committed Fund Balance	192,471				
0840 Assigned Fund Balance	27,696,986				
0850 Unassigned Fund Balance	7,598,407				
Total Fund Balances	\$36,386,163				
Total Liabilities, Deferred Inflows Of Resources And Fund Balances	\$48,313,862				

LEA : 103021003 Pine-Richland SD

Printed 11/30/2023 8:53:23 AM

Amounts Expressed in Whole Dollars

<u>Capital Reserve (690.</u>	<u>Capital Reserve (1431)</u>	<u>Other Capital Projects</u>	<u>Debt Service</u>	<u>Permanent</u>
<u>1850)</u>	<u>(32)</u>	<u>Fund</u>	<u>(40)</u>	<u>(90)</u>
<u>(31)</u>		<u>(39)</u>		

Liabilities And Deferred Inflows Of Resources And Fund Balances

Liabilities

0400 Due to Other Funds	
0411 Due to Other Governments	
0412 Due to Primary Government	
0413 Due to Component Unit	
0420 Accounts Payable	540,211
0430 Contracts Payable	342,468
0440 Current Portion of Long-Term Debt	
0450 Short-Term Payables	
0461 Accrued Salaries and Benefits	
0462 Payroll Deductions and Withholding	
0480 Unearned Revenues	
0490 Other Current Liabilities	

Total Liabilities	\$882,679
--------------------------	------------------

0950 Deferred Inflows of Resources

Fund Balances

0810 Nonspendable Fund Balance	
0820 Restricted Fund Balance	
0830 Committed Fund Balance	
0840 Assigned Fund Balance	9,961,983
0850 Unassigned Fund Balance	

Total Fund Balances	\$9,961,983
----------------------------	--------------------

Total Liabilities, Deferred Inflows Of Resources And Fund Balances	\$10,844,662
---	---------------------

LEA : 103021003 Pine-Richland SD

Printed 11/30/2023 8:53:23 AM

Amounts Expressed in Whole Dollars

Total Governmental Funds

Liabilities And Deferred Inflows Of Resources And Fund Balances

Liabilities

0400 Due to Other Funds	26,924
0411 Due to Other Governments	
0412 Due to Primary Government	
0413 Due to Component Unit	
0420 Accounts Payable	1,143,771
0430 Contracts Payable	454,303
0440 Current Portion of Long-Term Debt	
0450 Short-Term Payables	
0461 Accrued Salaries and Benefits	10,012,297
0462 Payroll Deductions and Withholding	
0480 Unearned Revenues	
0490 Other Current Liabilities	

Total Liabilities \$11,637,295

0950 Deferred Inflows of Resources	1,173,083
------------------------------------	-----------

Fund Balances

0810 Nonspendable Fund Balance	898,299
0820 Restricted Fund Balance	
0830 Committed Fund Balance	192,471
0840 Assigned Fund Balance	37,658,969
0850 Unassigned Fund Balance	7,598,407

Total Fund Balances \$46,348,146

Total Liabilities, Deferred Inflows Of Resources And Fund Balances \$59,158,524

Amounts Expressed in Whole Dollars	<u>General Fund</u> <u>(10)</u>	<u>Student Sponsored</u> <u>Activity Fund</u> <u>(21)</u>	<u>Public Purpose Trust</u> <u>(27)</u>	<u>Other Compt Approved</u> <u>(28)</u>	<u>Athletic / Activity</u> <u>(29)</u>
Revenues					
6000 Revenue from Local Sources	81,212,537				
7000 Revenue from State Sources	20,602,743				
8000 Revenue from Federal Sources	1,462,739				
Total Revenues	\$103,278,019				
Expenditures					
1000 Instruction	55,376,080				
2000 Support Services	26,129,459				
3000 Operation of Non-Instructional Services	2,351,147				
4000 Facilities Acquisition, Construction and Improvement Services	2,069,666				
5110 Debt Service	8,723,275				
5130 Refund of Prior Year Revenues / Receipts	286,870				
5140 Leases and Other Right-to-Use Arrangements	297,720				
Total Expenditures	\$95,234,217				
Excess (Deficiency) Of Revenues Over Expenditures	\$8,043,802				
Other Financing Sources (Uses)					
9110 Face Value of Bonds Issued					
9120 Proceeds from Refunding of Bonds					
9130 Bond Premiums					
9200 Proceeds from Extended Term Financing, Leases, and Other Right-to-Use Arrangements					
9300 Interfund Transfers - IN	1,668,455				
9400 Sale of or Compensation for Loss of Fixed Assets					
9710 Transfers from Component Units					
9720 Transfers from Primary Governments					
9910 Other Financing Sources Not Listed in the 9000 Series					
9990 Insurance Recoveries	6,733				
5120 Debt Service – Refunded Bonds					
5150 Bond Discounts					
5200 Interfund Transfers – Out	7,379,221				
5300 Transfers Out to Component Units/Primary Governments					
Total Other Financing Sources (Uses)	(\$5,704,033)				

Amounts Expressed in Whole Dollars	<u>Capital Reserve (690.1850)</u> <u>(31)</u>	<u>Capital Reserve (1431)</u> <u>(32)</u>	<u>Other Capital Projects</u> <u>Fund</u> <u>(39)</u>	<u>Debt Service</u> <u>(40)</u>	<u>Permanent</u> <u>(90)</u>
Revenues					
6000 Revenue from Local Sources		367,159	117,806		
7000 Revenue from State Sources					
8000 Revenue from Federal Sources					
Total Revenues		\$367,159	\$117,806		
Expenditures					
1000 Instruction					
2000 Support Services		549,768	62,000		
3000 Operation of Non-Instructional Services		10,444			
4000 Facilities Acquisition, Construction and Improvement Services		5,694,201			
5110 Debt Service			1,209,654		
5130 Refund of Prior Year Revenues / Receipts					
5140 Leases and Other Right-to-Use Arrangements					
Total Expenditures		\$6,254,413	\$1,271,654		
Excess (Deficiency) Of Revenues Over Expenditures		(\$5,887,254)	(\$1,153,848)		
Other Financing Sources (Uses)					
9110 Face Value of Bonds Issued					
9120 Proceeds from Refunding of Bonds					
9130 Bond Premiums					
9200 Proceeds from Extended Term Financing, Leases, and Other Right-to-Use Arrangements					
9300 Interfund Transfers - IN		7,379,221			
9400 Sale of or Compensation for Loss of Fixed Assets					
9710 Transfers from Component Units					
9720 Transfers from Primary Governments					
9910 Other Financing Sources Not Listed in the 9000 Series					
9990 Insurance Recoveries					
5120 Debt Service – Refunded Bonds					
5150 Bond Discounts					
5200 Interfund Transfers – Out			1,668,455		
5300 Transfers Out to Component Units/Primary Governments					
Total Other Financing Sources (Uses)		\$7,379,221	(\$1,668,455)		

Amounts Expressed in Whole Dollars	<u>Total Governmental Funds</u>
Revenues	
6000 Revenue from Local Sources	81,697,502
7000 Revenue from State Sources	20,602,743
8000 Revenue from Federal Sources	1,462,739
Total Revenues	\$103,762,984
Expenditures	
1000 Instruction	55,376,080
2000 Support Services	26,741,227
3000 Operation of Non-Instructional Services	2,361,591
4000 Facilities Acquisition, Construction and Improvement Services	7,763,867
5110 Debt Service	9,932,929
5130 Refund of Prior Year Revenues / Receipts	286,870
5140 Leases and Other Right-to-Use Arrangements	297,720
Total Expenditures	\$102,760,284
Excess (Deficiency) Of Revenues Over Expenditures	\$1,002,700
Other Financing Sources (Uses)	
9110 Face Value of Bonds Issued	
9120 Proceeds from Refunding of Bonds	
9130 Bond Premiums	
9200 Proceeds from Extended Term Financing, Leases, and Other Right-to-Use Arrangements	
9300 Interfund Transfers - IN	9,047,676
9400 Sale of or Compensation for Loss of Fixed Assets	
9710 Transfers from Component Units	
9720 Transfers from Primary Governments	
9910 Other Financing Sources Not Listed in the 9000 Series	
9990 Insurance Recoveries	6,733
5120 Debt Service – Refunded Bonds	
5150 Bond Discounts	
5200 Interfund Transfers – Out	9,047,676
5300 Transfers Out to Component Units/Primary Governments	
Total Other Financing Sources (Uses)	\$6,733

Amounts Expressed in Whole Dollars	<u>General Fund</u> <u>(10)</u>	<u>Student Sponsored</u> <u>Activity Fund</u> <u>(21)</u>	<u>Public Purpose Trust</u> <u>(27)</u>	<u>Other Compt Approved</u> <u>(28)</u>	<u>Athletic / Activity</u> <u>(29)</u>
Special And Extraordinary Items					
9920 Special Items – Gains					
9930 Extraordinary Items – Gains					
5520 Special Items – Losses					
5530 Extraordinary Items – Losses					
Net Change In Fund Balances	\$2,339,769				
Fund Balance					
0001 Fund Balance - Beginning of Fiscal Year	34,046,394				
Fund Balance - End Of Year	\$36,386,163				

Amounts Expressed in Whole Dollars	<u>Capital Reserve (690.</u> <u>1850)</u> <u>(31)</u>	<u>Capital Reserve (1431)</u> <u>(32)</u>	<u>Other Capital Projects</u> <u>Fund</u> <u>(39)</u>	<u>Debt Service</u> <u>(40)</u>	<u>Permanent</u> <u>(90)</u>
Special And Extraordinary Items					
9920 Special Items – Gains					
9930 Extraordinary Items – Gains					
5520 Special Items – Losses					
5530 Extraordinary Items – Losses					
Net Change In Fund Balances		\$1,491,967	(\$2,822,303)		
Fund Balance					
0001 Fund Balance - Beginning of Fiscal Year		8,470,015	2,822,303		
Fund Balance - End Of Year		\$9,961,982			

Amounts Expressed in Whole Dollars	<u>Total Governmental Funds</u>
Special And Extraordinary Items	
9920 Special Items – Gains	
9930 Extraordinary Items – Gains	
5520 Special Items – Losses	
5530 Extraordinary Items – Losses	
Net Change In Fund Balances	\$1,009,433
Fund Balance	
0001 Fund Balance - Beginning of Fiscal Year	45,338,712
Fund Balance - End Of Year	\$46,348,145

Amounts Expressed in Whole Dollars	<u>Food Service</u> <u>(51)</u>	<u>Child Care</u> <u>Operations</u> <u>(52)</u>	<u>Other Enterprise</u> <u>(58)</u>	<u>TOTAL</u>	<u>Internal Service</u> <u>(60)</u>
Assets And Deferred Outflows Of Resources					
Current Assets					
0100 Cash and Cash Equivalents	1,316,942		11,706	1,328,648	
0110 Investments					
0130 Due From Other Funds	16,516			16,516	
0141 Due From Other Governments					
0142 State Revenue Receivable					
0143 Federal Revenue Receivable					
0146 Due from Primary Government					
0147 Due from Component Unit					
0150 Other Receivables	2,322			2,322	
0170 Inventories	29,540			29,540	
0180 Prepaid Expenses (Expenditures)					
0190 Other Current Assets					
Total Current Assets	\$1,365,320		\$11,706	\$1,377,026	
Noncurrent Assets					
0211 Land					
0212 Site Improvements (Net)					
0220 Buildings and Building Improvements (Net)					
0230 Tangible Property and Intangible Right-To-Use Assets (Net)	187,472			187,472	
0250 Construction in Progress					
0260 Long Term Prepayments					
0290 Other Noncurrent Assets					
Total Noncurrent Assets	\$187,472			\$187,472	
0910 Deferred Outflows of Resources					
Total Assets And Deferred Outflows Of Resources	\$1,552,792		\$11,706	\$1,564,498	

Amounts Expressed in Whole Dollars	<u>Food Service</u> <u>(51)</u>	<u>Child Care</u> <u>Operations</u> <u>(52)</u>	<u>Other Enterprise</u> <u>(58)</u>	<u>TOTAL</u>	<u>Internal Service</u> <u>(60)</u>
Liabilities And Deferred Inflows Of Resources And Net Position					
Current Liabilities					
0400 Due to Other Funds					
0411 Due to Other Governments					
0413 Due to Component Unit					
0420 Accounts Payable	33,782			33,782	
0430 Contracts Payable					
0440 Current Portion of Long-Term Debt					
0450 Short-Term Payables					
0461 Accrued Salaries and Benefits					
0462 Payroll Deductions and Withholding					
0480 Unearned Revenues	2,496			2,496	
0490 Other Current Liabilities	114,053			114,053	
Total Current Liabilities	\$150,331			\$150,331	
Noncurrent Liabilities					
0510 Bonds Payable					
0520 Extended-Term Financing Agreements Payable					
0530 Lease and Other Right-To-Use Obligations					
0540 Accumulated Compensated Absences					
0550 Authority Lease Obligations					
0560 Other Post-Employment Benefits (OPEB)					
0570 Net Pension Liability					
0599 Other Noncurrent Liabilities					
Total Noncurrent Liabilities					
Total Liabilities	\$150,331			\$150,331	
0950 Deferred Inflows of Resources					
Net Position					
0791 Net Investment in Capital Assets	187,472			187,472	
0008 Restricted Net Position (0792 – 0798)					
0799 Unrestricted Net Position	1,214,989		11,706	1,226,695	
Total Net Position	\$1,402,461		\$11,706	\$1,414,167	
Total Liabilities And Deferred Inflows Of Resources And Net Position	\$1,552,792		\$11,706	\$1,564,498	

Amounts Expressed in Whole Dollars	<u>Food Service</u> <u>(51)</u>	<u>Child Care Operations</u> <u>(52)</u>	<u>Other Enterprise</u> <u>(58)</u>	<u>TOTAL</u>	<u>Internal Service</u> <u>(60)</u>
Operating Revenues					
6600 Food Service Revenue	1,521,193			1,521,193	
0071 Charges for Services					
0072 Other Operating Revenue			600	600	
Total Operating Revenues	\$1,521,193		\$600	\$1,521,793	
Operating Expenses					
100 Personnel Services – Salaries					
200 Personnel Services – Employee Benefits					
300 Purchased Professional and Technical Services					
400 Purchased Property Services	43,314			43,314	
500 Other Purchased Services	1,750,941			1,750,941	
600 Supplies	201,885		3,990	205,875	
740 Depreciation	26,766			26,766	
770 Amortization Expense					
810 Dues and Fees	5,032			5,032	
880 Refunds of Prior Years' Receipts					
890 Miscellaneous Expenditures					
Total Operating Expenses	\$2,027,938		\$3,990	\$2,031,928	
Operating Income (Loss)	(\$506,745)		(\$3,390)	(\$510,135)	
Non Operating Revenues (Expenses)					
6500 Earnings on Investments	37,536		134	37,670	
6830 Federal Revenue from Intermediary Sources					
6920 Contributions and Donations from Private Sources					
6930 Gains or Losses on Sale of Fixed Assets					
6991 Refunds of a Prior Year Expenditure					
7000 Revenue from State Sources	120,545			120,545	
8000 Revenue from Federal Sources	689,658			689,658	
9990 Insurance Recoveries					
820 Claims and Judgments Against the LEA					
830 Interest					
TOTAL Non Operating Revenues (Expenses)	\$847,739		\$134	\$847,873	
Income (Loss) Before Contributions And Transfers	\$340,994		(\$3,256)	\$337,738	

Amounts Expressed in Whole Dollars	<u>Food Service</u> <u>(51)</u>	<u>Child Care Operations</u> <u>(52)</u>	<u>Other Enterprise</u> <u>(58)</u>	<u>TOTAL</u>	<u>Internal Service</u> <u>(60)</u>
Contributions, Transfers, and Special and Extraordinary Items					
5200 Interfund Transfers – Out					
5300 Transfers Out to Component Units/Primary Governments					
5520 Special Items – Losses					
5530 Extraordinary Items – Losses					
9300 Interfund Transfers - IN					
9500 Capital Contributions					
9700 Transfers IN From Component Units/Primary Governments					
9920 Special Items – Gains					
9930 Extraordinary Items – Gains					
Change In Net Position	\$340,994		(\$3,256)	\$337,738	
0002 Net Position - Beginning of Fiscal Year	1,061,467		14,962	1,076,429	
0003 Accounting Changes / Residual Equity Transfers					
Net Position - End Of Year	\$1,402,461		\$11,706	\$1,414,167	

LEA : 103021003 Pine-Richland SD

Printed 11/30/2023 8:53:58 AM

Amounts Expressed in Whole Dollars	<u>Food Service</u> <u>(51)</u>	<u>Child Care Operations</u> <u>(52)</u>	<u>Other Enterprise</u> <u>(58)</u>	<u>TOTAL</u>	<u>Internal Service(60)</u>
Cash Flows From Operating Activities					
0011 Cash Receipts From Users	1,541,907		600	1,542,507	
0012 Cash Receipts From Assessments Made to Other Funds					
0013 Cash Receipts From Earnings on Investments					
0014 Cash Receipts From Other Operating Revenue					
0015 Cash Payments To Employees For Services					
0016 Cash Payments For Insurance Claims					
0017 Cash Payments To Suppliers For Goods and Services	1,878,684			1,878,684	
0018 Cash Payments For Other Operating Expenses	5,032		3,990	9,022	
Net Cash Provided By (Used For) Operating Activities	(\$341,809)		(\$3,390)	(\$345,199)	
Cash Flows From Non-Capital Financing Activities					
0021 Receipts From Local Sources - 6000					
0022 Receipts From State Sources - 7000	524,476			524,476	
0023 Receipts From Federal Sources -8000	199,486			199,486	
0024 Notes and Loans Received (Repaid)					
0025 Interest Paid on Notes/Loans - 5100-830					
0026 Operating Transfers In (Out)/Residual Equity Trans	6,258			6,258	
0027 Operating Transfers In (Out) Primary Government / Comp Unit					
0028 Receipts From Refund of Prior Year Expenditures - 6991					
0029 Special and Extraordinary Gains (losses)					
0030 Receipts from Insurance Recoveries -9990					
Net Cash Prov By (Used for) Non-Capital Financing Activities	\$730,220			\$730,220	
Cash Flows From Capital and Related Financing Activities					
0031 Payments For Fac Acq, Const, and Imp - 4000	(11,704)			(11,704)	
0032 Gain / (Loss) on Sale of Fixed Assets - 6930					
0033 Proceeds From Extended Term Financing - 9200					
0034 Principal Paid on Financing Agreements					
0035 Interest Paid on Financing Agreements - 5100-830					
0036 (Inc) Dec in Contributed Capital					
Net Cash Prov By (Used for) Capital and Related Financing Activities	(\$11,704)			(\$11,704)	
Cash Flows From Investing Activities					
0041 Earnings on Investments - 6500	37,536		134	37,670	
0042 Purchase of Inv Securities / Deposits to Inv Pools					
0043 Receipts From Investment Pool Withdrawals					
0044 Proceeds from Sale and Maturity of Inv Securities					

LEA : 103021003 Pine-Richland SD

Printed 11/30/2023 8:53:58 AM

0045 Loans Received (Paid)

Net Cash Prov By (Used for) Investing Activities	\$37,536	\$134	\$37,670
---	-----------------	--------------	-----------------

	<u>Food Service</u> <u>(51)</u>	<u>Child Care Operations</u> <u>(52)</u>	<u>Other Enterprise</u> <u>(58)</u>	<u>TOTAL</u>	<u>Internal Service</u> <u>(60)</u>
Net Increase (Decrease) in Cash Flows	414,243		(3,256)	410,987	
0004 Cash and Cash Equivalents Beginning of Year	902,699		14,962	917,661	
Cash and Cash Equivalents at Year End	\$1,316,942		\$11,706	\$1,328,648	

Reconciliation of Operating Income (Loss) To Net Cash Provided by (Used For) Operating Activities

0005 Operating Income (Loss) per REP	(506,745)		(3,390)	(510,135)	
Adjustments					
0051 Depreciation and Net Amortization	26,766			26,766	
0052 Provision for Uncollectible Accounts					
0053 Other Adjustments	139,343			139,343	
Effect of Changes in Assets, Liabilities, Deferred Outflows and Deferred Inflows					
0054 (Inc) Dec In Accounts Receivable (0120-0150)	(1,194)			(1,194)	
0055 Advances to Other Funds					
0056 (Inc) Dec in Inventories (0170)	2,469			2,469	
0057 (Inc) Dec in Prepaid Expenses (0180)					
0058 (Inc) Dec in Other Current or Noncurrent Assets					
0064 Deferred Outflows (0910)					
0059 Inc (Dec) in Accounts Payable (0400-0450)	(24,356)			(24,356)	
0060 Inc (Dec) in Accrued Salaries/Benefits (0461)					
0065 Inc (Dec) in Net Pension Liabilities (0570)					
0066 Inc (Dec) in Other Postemp Benefit Oblig (0560)					
0061 Inc (Dec) in Payroll Deductions/Withholding (0462)					
0062 Inc (Dec) in Unearned Revenue (0480)					
0063 Inc (Dec) in Other Current or Noncurrent Liabilities	21,908			21,908	
0067 Deferred Inflows (0950)					
Total Adjustments	\$164,936			\$164,936	
Cash Provided By (Used for) Total	(\$341,809)		(\$3,390)	(\$345,199)	

**COMBINED STATEMENT OF CASH FLOWS
SCHEDULE OF NONCASH INVESTING, CAPITAL, AND FINANCING ACTIVITIES**

Explanation of Transaction and Balance Sheet Effect	Amount
Total	

LEA : 103021003 Pine-Richland SD

Printed 11/30/2023 8:53:59 AM

Amounts Expressed in Whole Dollars

Private Purpose Trust
(71)

Investment Trust
(72)

Pension Trust
(73)

Student Activity Custodial
(81)

Assets And Deferred Outflows Of Resources

Assets

0100 Cash and Cash Equivalents				139,828
0110 Investments				
0130 Due From Other Funds				
0140 Due from Other Governments, Primary Government and Component Units				
0150 Other Receivables				
0170 Inventories				
0180 Prepaid Expenses (Expenditures)				
0190 Other Current Assets				
0220 Buildings and Building Improvements (Net)				
0230 Tangible Property and Intangible Right-To-Use Assets (Net)				

Total Assets				\$139,828
---------------------	--	--	--	------------------

0910 Deferred Outflows of Resources

Total Assets And Deferred Outflows Of Resources				\$139,828
--	--	--	--	------------------

LEA : 103021003 Pine-Richland SD

Printed 11/30/2023 8:53:59 AM

Amounts Expressed in Whole Dollars

Other Custodial
(89)

Fiduciary Component Units
(98)

Total Fiduciary Funds

Assets And Deferred Outflows Of Resources

Assets

0100 Cash and Cash Equivalents			139,828
0110 Investments			
0130 Due From Other Funds			
0140 Due from Other Governments, Primary Government and Component Units			
0150 Other Receivables			
0170 Inventories			
0180 Prepaid Expenses (Expenditures)			
0190 Other Current Assets			
0220 Buildings and Building Improvements (Net)			
0230 Tangible Property and Intangible Right-To-Use Assets (Net)			

Total Assets			\$139,828
---------------------	--	--	------------------

0910 Deferred Outflows of Resources

Total Assets And Deferred Outflows Of Resources			\$139,828
--	--	--	------------------

LEA : 103021003 Pine-Richland SD

Printed 11/30/2023 8:53:59 AM

Amounts Expressed in Whole Dollars

Private Purpose Trust
(71)

Investment Trust
(72)

Pension Trust
(73)

Student Activity Custodial
(81)

Liabilities, Deferred Inflows Of Resources And Net Position

Liabilities

- 0400 Due to Other Funds
- 0410 Due to Other Governments, Primary Government and Component Units
- 0420 Accounts Payable
- 0430 Contracts Payable
- 0450 Short-Term Payables
- 0460 Payroll Accruals and Withholdings
- 0480 Unearned Revenues
- 0490 Other Current Liabilities

Total Liabilities

- 0950 Deferred Inflows of Resources

Net Position

- 0791 Net Investment in Capital Assets
- 0009 Restricted Net Position (0792 – 0798) 139,828
- 0799 Unrestricted Net Position

Total Net Position \$139,828

Total Liabilities, Deferred Inflows Of Resources And Net Position \$139,828

LEA : 103021003 Pine-Richland SD

Printed 11/30/2023 8:53:59 AM

Amounts Expressed in Whole Dollars	<u>Other Custodial</u> <u>(89)</u>	<u>Fiduciary Component Units</u> <u>(98)</u>	<u>Total Fiduciary Funds</u>
Liabilities, Deferred Inflows Of Resources And Net Position			
Liabilities			
0400 Due to Other Funds			
0410 Due to Other Governments, Primary Government and Component Units			
0420 Accounts Payable			
0430 Contracts Payable			
0450 Short-Term Payables			
0460 Payroll Accruals and Withholdings			
0480 Unearned Revenues			
0490 Other Current Liabilities			
Total Liabilities			
0950 Deferred Inflows of Resources			
Net Position			
0791 Net Investment in Capital Assets			
0009 Restricted Net Position (0792 – 0798)			139,828
0799 Unrestricted Net Position			
Total Net Position			\$139,828
Total Liabilities, Deferred Inflows Of Resources And Net Position			\$139,828

Amounts Expressed in Whole Dollars	<u>Private Purpose Trust</u> (71)	<u>Investment Trust</u> (72)	<u>Pension Trust</u> (73)	<u>Student Activity</u> <u>Custodial</u> (81)	<u>Other Custodial</u> (89)	<u>Fiduciary Component</u> <u>Units</u> (98)
Additions						
0091 Gifts and Contributions				227,177		
0095 Net Investment Earnings				903		
0092 Other Additions						
Deductions						
0093 Scholarships Awarded						
0094 Other Deductions				196,535		
Change In Net Position				\$31,545		
0006 Net Position – Beginning of Fiscal Year				108,283		
0007 Net Position Held in Trust for Pension Benefits						
Net Position - End of Fiscal Year				\$139,828		

Amounts Expressed in Whole Dollars	<u>Total Fiduciary Funds</u>
Additions	
0091 Gifts and Contributions	227,177
0095 Net Investment Earnings	903
0092 Other Additions	
Deductions	
0093 Scholarships Awarded	
0094 Other Deductions	196,535
Change in Net Position	\$31,545
0006 Net Position – Beginning of Fiscal Year	108,283
0007 Net Position Held in Trust for Pension Benefits	
Net Position - End of Fiscal Year	\$139,828

	<u>Revenue Reported In Current Year</u>	<u>Current Year Tax Accrual</u>	<u>Prior Year Tax Accrual</u>	<u>Taxes Collected In Current Year</u>
<u>Revenue from Local Sources</u>				
6111 Current Real Estate Taxes	62,389,416.00			62,389,416.00
6112 Interim Real Estate Taxes	1,814,545.00			1,814,545.00
6113 Public Utility Realty Taxes	69,770.00			69,770.00
6120 Current Per Capita Taxes, Section 679	82,688.00			82,688.00
6141 Current Act 511 Per Capita Taxes	82,148.00			82,148.00
6151 Current Act 511 Earned Income Taxes	9,554,165.00	49,592.60	86,821.98	9,591,394.38
6153 Current Act 511 Real Estate Transfer Taxes	1,548,960.00	79,986.53	173,098.04	1,642,071.51
6411 Delinquent Real Estate Taxes	2,387,360.00	187,628.11	84,909.64	2,284,641.53
6451 Delinquent Act 511 Earned Income Taxes	303,219.00			303,219.00
6500 Earnings on Investments	1,404,154.00			
6700 Revenues from LEA Activities	286,288.00			
6832 Federal IDEA Revenue Received as Pass Through	793,078.00			
6910 Rentals	154,237.00			
6920 Contributions and Donations from Private Sources	84,264.00			
6991 Refunds of a Prior Year Expenditure	46,239.00			
6992 Energy Efficiency Revenues and Incentives	26,582.00			
6999 Other Revenues Not Specified Above	185,424.00			
TOTAL Revenue from Local Sources	\$81,212,537.00	\$317,207.24	\$344,829.66	\$78,259,893.42

**Revenue Reported
In Current Year**

Revenue from State Sources

7111 Basic Education Funding-Formula	5,995,710.00		
7112 Basic Education Funding-Social Security	1,424,241.00		
7160 Tuition for Orphans Subsidy	13,160.00		
7271 Special Education funds for School-Aged Pupils	1,872,833.00		
7311 Pupil Transportation Subsidy	1,122,801.00		
7312 Nonpublic and Charter School Pupil Transportation Subsidy	202,895.00		
7320 Rental and Sinking Fund Payments / Building Reimbursement Subsidy	1,049,853.00		
7330 Health Services (Medical, Dental, Nurse, Act 25)	90,036.00		
7340 State Property Tax Reduction Allocation	1,572,308.00		
7505 Ready to Learn Block Grant	418,675.00		
7599 Other State Revenue Not Listed Elsewhere in the 7000 Series	18,183.00		
7820 State Share of Retirement Contributions	6,822,048.00		
TOTAL Revenue from State Sources	\$20,602,743.00		

**Revenue Reported
In Current Year**

Revenue from Federal Sources

8514 Title I - Improving the Academic Achievement of the Disadvantaged	142,643.00			
8515 Title II - Preparing, Training, and Recruiting High Quality Teachers and Principals	63,470.00			
8517 Title IV - 21st Century Schools	10,993.00			
8744 ARP ESSER - Elementary and Secondary School Emergency Relief Fund	870,595.00			
8751 ARP ESSER Learning Loss	27,973.00			
8752 ARP ESSER Summer Programs	11,355.00			
8810 School-Based Access Medicaid Reimbursement Program (SBAP) Reimbursements (Access)	330,425.00			
8820 Medical Assistance Reimbursement for Administrative Claiming (Quarterly) Program	5,285.00			
TOTAL Revenue from Federal Sources	\$1,462,739.00			

**Revenue Reported
In Current Year**

Other Financing Sources

9330 Capital Projects Fund Transfers	1,668,455.00			
9990 Insurance Recoveries	6,733.00			
TOTAL Other Financing Sources	\$1,675,188.00			
TOTAL FROM ALL SOURCES	\$104,953,207.00	\$317,207.24	\$344,829.66	\$78,259,893.42

LEA : 103021003 Pine-Richland SD

Printed 11/30/2023 8:54:03 AM

	<u>General Fund (10)</u>	<u>Student Sponsored Activity Fund (21)</u>	<u>Public Purpose Trust (27)</u>	<u>Other Compt Approved (28)</u>	<u>Athletic / Activity (29)</u>	<u>Capital Reserve (690, 1850) (31)</u>
6000 Revenue from Local Sources						
6111 Current Real Estate Taxes	62,389,416.00					
6112 Interim Real Estate Taxes	1,814,545.00					
6113 Public Utility Realty Taxes	69,770.00					
6120 Current Per Capita Taxes, Section 679	82,688.00					
6141 Current Act 511 Per Capita Taxes	82,148.00					
6151 Current Act 511 Earned Income Taxes	9,554,165.00					
6153 Current Act 511 Real Estate Transfer Taxes	1,548,960.00					
6411 Delinquent Real Estate Taxes	2,387,360.00					
6451 Delinquent Act 511 Earned Income Taxes	303,219.00					
6500 Earnings on Investments	1,404,154.00					
6700 Revenues from LEA Activities	286,288.00					
6832 Federal IDEA Revenue Received as Pass Through	793,078.00					
6910 Rentals	154,237.00					
6920 Contributions and Donations from Private Sources	84,264.00					
6991 Refunds of a Prior Year Expenditure	46,239.00					
6992 Energy Efficiency Revenues and Incentives	26,582.00					
6999 Other Revenues Not Specified Above	185,424.00					
6000 Total Revenue from Local Sources	\$81,212,537.00					
7000 Revenue from State Sources						
7111 Basic Education Funding-Formula	5,995,710.00					
7112 Basic Education Funding-Social Security	1,424,241.00					
7160 Tuition for Orphans Subsidy	13,160.00					
7271 Special Education funds for School-Aged Pupils	1,872,833.00					
7311 Pupil Transportation Subsidy	1,122,801.00					
7312 Nonpublic and Charter School Pupil Transportation Subsidy	202,895.00					
7320 Rental and Sinking Fund Payments / Building Reimbursement Subsidy	1,049,853.00					
7330 Health Services (Medical, Dental, Nurse, Act 25)	90,036.00					
7340 State Property Tax Reduction Allocation	1,572,308.00					
7505 Ready to Learn Block Grant	418,675.00					
7599 Other State Revenue Not Listed Elsewhere in the 7000 Series	18,183.00					
7820 State Share of Retirement Contributions	6,822,048.00					
7000 Total Revenue from State Sources	\$20,602,743.00					
8000 Revenue from Federal Sources						
8514 Title I - Improving the Academic Achievement of the Disadvantaged	142,643.00					

LEA : 103021003 Pine-Richland SD

Printed 11/30/2023 8:54:03 AM

	<u>Capital Reserve</u> <u>(1431) (32)</u>	<u>Other Capital</u> <u>Projects Fund (39)</u>	<u>Debt Service (40)</u>	<u>Permanent (90)</u>	<u>Total</u>
6000 Revenue from Local Sources					
6111 Current Real Estate Taxes					62,389,416.00
6112 Interim Real Estate Taxes					1,814,545.00
6113 Public Utility Realty Taxes					69,770.00
6120 Current Per Capita Taxes, Section 679					82,688.00
6141 Current Act 511 Per Capita Taxes					82,148.00
6151 Current Act 511 Earned Income Taxes					9,554,165.00
6153 Current Act 511 Real Estate Transfer Taxes					1,548,960.00
6411 Delinquent Real Estate Taxes					2,387,360.00
6451 Delinquent Act 511 Earned Income Taxes					303,219.00
6500 Earnings on Investments	367,159.00	117,806.00			1,889,119.00
6700 Revenues from LEA Activities					286,288.00
6832 Federal IDEA Revenue Received as Pass Through					793,078.00
6910 Rentals					154,237.00
6920 Contributions and Donations from Private Sources					84,264.00
6991 Refunds of a Prior Year Expenditure					46,239.00
6992 Energy Efficiency Revenues and Incentives					26,582.00
6999 Other Revenues Not Specified Above					185,424.00
6000 Total Revenue from Local Sources	\$367,159.00	\$117,806.00			\$81,697,502.00
7000 Revenue from State Sources					
7111 Basic Education Funding-Formula					5,995,710.00
7112 Basic Education Funding-Social Security					1,424,241.00
7160 Tuition for Orphans Subsidy					13,160.00
7271 Special Education funds for School-Aged Pupils					1,872,833.00
7311 Pupil Transportation Subsidy					1,122,801.00
7312 Nonpublic and Charter School Pupil Transportation Subsidy					202,895.00
7320 Rental and Sinking Fund Payments / Building Reimbursement Subsidy					1,049,853.00
7330 Health Services (Medical, Dental, Nurse, Act 25)					90,036.00
7340 State Property Tax Reduction Allocation					1,572,308.00
7505 Ready to Learn Block Grant					418,675.00
7599 Other State Revenue Not Listed Elsewhere in the 7000 Series					18,183.00
7820 State Share of Retirement Contributions					6,822,048.00
7000 Total Revenue from State Sources					\$20,602,743.00
8000 Revenue from Federal Sources					
8514 Title I - Improving the Academic Achievement of the Disadvantaged					142,643.00

LEA : 103021003 Pine-Richland SD

Printed 11/30/2023 8:54:03 AM

	<u>General Fund (10)</u>	<u>Student Sponsored Activity Fund (21)</u>	<u>Public Purpose Trust (27)</u>	<u>Other Compt Approved (28)</u>	<u>Athletic / Activity (29)</u>	<u>Capital Reserve (690, 1850) (31)</u>
8000 Revenue from Federal Sources						
8515 Title II - Preparing, Training, and Recruiting High Quality Teachers and Principals	63,470.00					
8517 Title IV - 21st Century Schools	10,993.00					
8744 ARP ESSER - Elementary and Secondary School Emergency Relief Fund	870,595.00					
8751 ARP ESSER Learning Loss	27,973.00					
8752 ARP ESSER Summer Programs	11,355.00					
8810 School-Based Access Medicaid Reimbursement Program (SBAP) Reimbursements (Access)	330,425.00					
8820 Medical Assistance Reimbursement for Administrative Claiming (Quarterly) Program	5,285.00					
8000 Total Revenue from Federal Sources	\$1,462,739.00					
9000 Other Financing Sources						
9310 General Fund Transfers						
9330 Capital Projects Fund Transfers	1,668,455.00					
9990 Insurance Recoveries	6,733.00					
9000 Total Other Financing Sources	\$1,675,188.00					
Total From All Sources	\$104,953,207.00					

LEA : 103021003 Pine-Richland SD

Printed 11/30/2023 8:54:03 AM

	<u>Capital Reserve</u> <u>(1431) (32)</u>	<u>Other Capital</u> <u>Projects Fund (39)</u>	<u>Debt Service (40)</u>	<u>Permanent (90)</u>	<u>Total</u>
8000 Revenue from Federal Sources					
8515 Title II - Preparing, Training, and Recruiting High Quality Teachers and Principals					63,470.00
8517 Title IV - 21st Century Schools					10,993.00
8744 ARP ESSER - Elementary and Secondary School Emergency Relief Fund					870,595.00
8751 ARP ESSER Learning Loss					27,973.00
8752 ARP ESSER Summer Programs					11,355.00
8810 School-Based Access Medicaid Reimbursement Program (SBAP) Reimbursements (Access)					330,425.00
8820 Medical Assistance Reimbursement for Administrative Claiming (Quarterly) Program					5,285.00
8000 Total Revenue from Federal Sources					\$1,462,739.00
9000 Other Financing Sources					
9310 General Fund Transfers	7,379,221.00				7,379,221.00
9330 Capital Projects Fund Transfers					1,668,455.00
9990 Insurance Recoveries					6,733.00
9000 Total Other Financing Sources	\$7,379,221.00				\$9,054,409.00
Total From All Sources	\$7,746,380.00	\$117,806.00			\$112,817,393.00

	<u>General Fund (10)</u>	<u>Student Sponsored Activity Fund (21)</u>	<u>Public Purpose Trust (27)</u>	<u>Other Compt Approved (28)</u>	<u>Athletic / Activity (29)</u>	<u>Capital Reserve (690. 1850) (31)</u>
Revenue from Local Sources	81,212,537.00					
Revenue from State Sources	20,602,743.00					
Revenue from Federal Sources	1,462,739.00					
Other Financing Sources	1,675,188.00					
Total From All Sources	\$104,953,207.00					

	<u>Capital Reserve (1431)</u> <u>(32)</u>	<u>Other Capital Projects</u> <u>Fund (39)</u>	<u>Debt Service (40)</u>	<u>Permanent (90)</u>	<u>Total</u>
Revenue from Local Sources	367,159.00	117,806.00			81,697,502.00
Revenue from State Sources					20,602,743.00
Revenue from Federal Sources					1,462,739.00
Other Financing Sources	7,379,221.00				9,054,409.00
Total From All Sources	\$7,746,380.00	\$117,806.00			\$112,817,393.00

LEA : 103021003 Pine-Richland SD

Printed 11/30/2023 8:54:09 AM

General Fund (10)

	<u>Total</u>
1000 Instruction	
100 Personnel Services – Salaries	
100 Personnel Services – Salaries	29,324,485.00
Total Personnel Services – Salaries	\$29,324,485.00
200 Personnel Services – Employee Benefits	
210 Group Insurance – Contracted Provider	6,348,737.00
220 Social Security Contributions	2,191,570.00
230 PSERS Retirement Contributions	10,310,965.00
250 Unemployment Compensation	28,199.00
260 Workers’ Compensation	106,156.00
280 Other Post-Employment Benefits (OPEB)	301,895.00
Total Personnel Services – Employee Benefits	\$19,287,522.00
300 Purchased Professional and Technical Services	
322 Professional Educational Services – Ius	1,458,541.00
329 Professional Educational Services – Other	938,674.00
360 Employee Training and Development Services	5,501.00
Total Purchased Professional and Technical Services	\$2,402,716.00
400 Purchased Property Services	
410 Cleaning Services	1,613.00
430 Repairs and Maintenance Services	11,001.00
440 Rentals	831.00
Total Purchased Property Services	\$13,445.00
500 Other Purchased Services	
510 Student Transportation Services	63,102.00
562 Tuition To Pennsylvania Charter Schools	790,048.00
564 Tuition To Career and Technology Centers	687,133.00
567 Tuition To Approved Private Schools (APS) and PA Chartered Schools for the Deaf and Blind	1,639,635.00
569 Tuition – Other	226,855.00
580 Travel	19,994.00
Total Other Purchased Services	\$3,426,767.00
600 Supplies	
610 General Supplies	516,483.00
630 Food	38.00
640 Books and Periodicals	216,607.00
650 Supplies & Fees – Technology Related	146,120.00
Total Supplies	\$879,248.00
800 Other Objects	
810 Dues and Fees	41,897.00
Total Other Objects	\$41,897.00
Total 1000 Instruction	\$55,376,080.00

General Fund (10)

1100 Regular Programs – Elementary / Secondary	<u>Elementary</u>	<u>Secondary</u>	<u>Federal</u>	<u>Total</u>
100 Personnel Services – Salaries				
100 Personnel Services – Salaries	11,832,410.00	12,122,094.00	162,275.00	24,116,779.00
Total Personnel Services – Salaries	\$11,832,410.00	\$12,122,094.00	\$162,275.00	\$24,116,779.00
200 Personnel Services – Employee Benefits				
210 Group Insurance – Contracted Provider	2,367,137.00	2,168,784.00	43,945.00	4,579,866.00
220 Social Security Contributions	883,189.00	914,154.00	12,031.00	1,809,374.00
230 PSERS Retirement Contributions	4,157,108.00	4,303,483.00	57,218.00	8,517,809.00
250 Unemployment Compensation	10,678.00	10,638.00	117.00	21,433.00
260 Workers' Compensation	39,288.00	42,086.00	627.00	82,001.00
280 Other Post-Employment Benefits (OPEB)	199,518.00	59,387.00		258,905.00
Total Personnel Services – Employee Benefits	\$7,656,918.00	\$7,498,532.00	\$113,938.00	\$15,269,388.00
300 Purchased Professional and Technical Services				
329 Professional Educational Services – Other	384,933.00	388,128.00	8,000.00	781,061.00
Total Purchased Professional and Technical Services	\$384,933.00	\$388,128.00	\$8,000.00	\$781,061.00
400 Purchased Property Services				
410 Cleaning Services		1,613.00		1,613.00
430 Repairs and Maintenance Services	2,982.00	8,019.00		11,001.00
440 Rentals		831.00		831.00
Total Purchased Property Services	\$2,982.00	\$10,463.00		\$13,445.00
500 Other Purchased Services				
510 Student Transportation Services	9,133.00	49,464.00		58,597.00
562 Tuition To Pennsylvania Charter Schools	152,135.00	264,824.00		416,959.00
567 Tuition To Approved Private Schools (APS) and PA Chartered Schools for the Deaf and Blind		18,720.00		18,720.00
569 Tuition – Other	600.00	9,963.00		10,563.00
580 Travel	1,495.00	18,441.00		19,936.00
Total Other Purchased Services	\$163,363.00	\$361,412.00		\$524,775.00
600 Supplies				
610 General Supplies	183,311.00	245,159.00	12,788.00	441,258.00
640 Books and Periodicals	106,497.00	100,443.00	2,638.00	209,578.00
650 Supplies & Fees – Technology Related	67,485.00	68,644.00	1,733.00	137,862.00
Total Supplies	\$357,293.00	\$414,246.00	\$17,159.00	\$788,698.00
800 Other Objects				
810 Dues and Fees	6,446.00	30,809.00		37,255.00
Total Other Objects	\$6,446.00	\$30,809.00		\$37,255.00
Total 1100 Regular Programs – Elementary / Secondary	\$20,404,345.00	\$20,825,684.00	\$301,372.00	\$41,531,401.00

General Fund (10)

1110 Regular Programs

	<u>Elementary</u>	<u>Secondary</u>	<u>Federal</u>	<u>Total</u>
100 Personnel Services – Salaries				
100 Personnel Services – Salaries	11,832,410.00	12,122,094.00		23,954,504.00
Total Personnel Services – Salaries	\$11,832,410.00	\$12,122,094.00		\$23,954,504.00
200 Personnel Services – Employee Benefits				
210 Group Insurance – Contracted Provider	2,367,137.00	2,168,784.00		4,535,921.00
220 Social Security Contributions	883,189.00	914,154.00		1,797,343.00
230 PSERS Retirement Contributions	4,157,108.00	4,303,483.00		8,460,591.00
250 Unemployment Compensation	10,678.00	10,638.00		21,316.00
260 Workers' Compensation	39,288.00	42,086.00		81,374.00
280 Other Post-Employment Benefits (OPEB)	199,518.00	59,387.00		258,905.00
Total Personnel Services – Employee Benefits	\$7,656,918.00	\$7,498,532.00		\$15,155,450.00
300 Purchased Professional and Technical Services				
329 Professional Educational Services – Other	384,933.00	388,128.00		773,061.00
Total Purchased Professional and Technical Services	\$384,933.00	\$388,128.00		\$773,061.00
400 Purchased Property Services				
410 Cleaning Services		1,613.00		1,613.00
430 Repairs and Maintenance Services	2,982.00	8,019.00		11,001.00
440 Rentals		831.00		831.00
Total Purchased Property Services	\$2,982.00	\$10,463.00		\$13,445.00
500 Other Purchased Services				
510 Student Transportation Services	9,133.00	49,464.00		58,597.00
562 Tuition To Pennsylvania Charter Schools	152,135.00	264,824.00		416,959.00
567 Tuition To Approved Private Schools (APS) and PA Chartered Schools for the Deaf and Blind		18,720.00		18,720.00
569 Tuition – Other	600.00	9,963.00		10,563.00
580 Travel	1,495.00	18,441.00		19,936.00
Total Other Purchased Services	\$163,363.00	\$361,412.00		\$524,775.00
600 Supplies				
610 General Supplies	183,311.00	245,159.00		428,470.00
640 Books and Periodicals	106,497.00	100,443.00		206,940.00
650 Supplies & Fees – Technology Related	67,485.00	68,644.00	1,733.00	137,862.00
Total Supplies	\$357,293.00	\$414,246.00	\$1,733.00	\$773,272.00
800 Other Objects				
810 Dues and Fees	6,446.00	30,809.00		37,255.00
Total Other Objects	\$6,446.00	\$30,809.00		\$37,255.00
Total 1110 Regular Programs	\$20,404,345.00	\$20,825,684.00	\$1,733.00	\$41,231,762.00

General Fund (10)

	<u>Elementary</u>	<u>Secondary</u>	<u>Federal</u>	<u>Total</u>
1190 Federally-Funded Regular Programs				
100 Personnel Services – Salaries				
100 Personnel Services – Salaries			162,275.00	162,275.00
Total Personnel Services – Salaries			\$162,275.00	\$162,275.00
200 Personnel Services – Employee Benefits				
210 Group Insurance – Contracted Provider			43,945.00	43,945.00
220 Social Security Contributions			12,031.00	12,031.00
230 PSERS Retirement Contributions			57,218.00	57,218.00
250 Unemployment Compensation			117.00	117.00
260 Workers' Compensation			627.00	627.00
Total Personnel Services – Employee Benefits			\$113,938.00	\$113,938.00
300 Purchased Professional and Technical Services				
329 Professional Educational Services – Other			8,000.00	8,000.00
Total Purchased Professional and Technical Services			\$8,000.00	\$8,000.00
600 Supplies				
610 General Supplies			12,788.00	12,788.00
640 Books and Periodicals			2,638.00	2,638.00
Total Supplies			\$15,426.00	\$15,426.00
Total 1190 Federally-Funded Regular Programs			\$299,639.00	\$299,639.00

LEA : 103021003 Pine-Richland SD

Printed 11/30/2023 8:54:09 AM

General Fund (10)

1200 Special Programs – Elementary / Secondary	<u>Elementary</u>	<u>Secondary</u>	<u>Federal</u>	<u>Total</u>
100 Personnel Services – Salaries				
100 Personnel Services – Salaries	2,551,599.00	2,068,518.00	578,500.00	5,198,617.00
Total Personnel Services – Salaries	\$2,551,599.00	\$2,068,518.00	\$578,500.00	\$5,198,617.00
200 Personnel Services – Employee Benefits				
210 Group Insurance – Contracted Provider	982,548.00	657,448.00	128,033.00	1,768,029.00
220 Social Security Contributions	186,234.00	152,389.00	42,901.00	381,524.00
230 PSERS Retirement Contributions	874,444.00	712,248.00	203,259.00	1,789,951.00
250 Unemployment Compensation	3,661.00	2,615.00	409.00	6,685.00
260 Workers' Compensation	13,811.00	7,046.00	3,251.00	24,108.00
280 Other Post-Employment Benefits (OPEB)	40,512.00	2,478.00		42,990.00
Total Personnel Services – Employee Benefits	\$2,101,210.00	\$1,534,224.00	\$377,853.00	\$4,013,287.00
300 Purchased Professional and Technical Services				
322 Professional Educational Services – Ius	769,420.00	678,300.00	3,552.00	1,451,272.00
329 Professional Educational Services – Other	5,516.00	152,097.00		157,613.00
Total Purchased Professional and Technical Services	\$774,936.00	\$830,397.00	\$3,552.00	\$1,608,885.00
500 Other Purchased Services				
510 Student Transportation Services	232.00	4,273.00		4,505.00
562 Tuition To Pennsylvania Charter Schools	124,730.00	248,359.00		373,089.00
567 Tuition To Approved Private Schools (APS) and PA Chartered Schools for the Deaf and Blind	549,432.00	1,065,126.00	6,357.00	1,620,915.00
569 Tuition – Other	53,143.00	163,149.00		216,292.00
580 Travel		58.00		58.00
Total Other Purchased Services	\$727,537.00	\$1,480,965.00	\$6,357.00	\$2,214,859.00
600 Supplies				
610 General Supplies	15,728.00	47,618.00	10,736.00	74,082.00
630 Food		38.00		38.00
640 Books and Periodicals	1,579.00	90.00	4,303.00	5,972.00
650 Supplies & Fees – Technology Related	3,097.00	1,290.00	3,871.00	8,258.00
Total Supplies	\$20,404.00	\$49,036.00	\$18,910.00	\$88,350.00
800 Other Objects				
810 Dues and Fees	20.00	4,622.00		4,642.00
Total Other Objects	\$20.00	\$4,622.00		\$4,642.00
Total 1200 Special Programs – Elementary / Secondary	\$6,175,706.00	\$5,967,762.00	\$985,172.00	\$13,128,640.00

General Fund (10)

1210 Life Skills Support

	<u>Elementary</u>	<u>Secondary</u>	<u>Federal</u>	<u>Total</u>
100 Personnel Services – Salaries				
100 Personnel Services – Salaries		59,635.00	135,658.00	195,293.00
Total Personnel Services – Salaries		\$59,635.00	\$135,658.00	\$195,293.00
200 Personnel Services – Employee Benefits				
210 Group Insurance – Contracted Provider		53.00	42,266.00	42,319.00
220 Social Security Contributions		4,562.00	10,011.00	14,573.00
230 PSERS Retirement Contributions		19,969.00	47,833.00	67,802.00
250 Unemployment Compensation		58.00	117.00	175.00
260 Workers' Compensation		192.00	447.00	639.00
Total Personnel Services – Employee Benefits		\$24,834.00	\$100,674.00	\$125,508.00
500 Other Purchased Services				
510 Student Transportation Services		252.00		252.00
Total Other Purchased Services		\$252.00		\$252.00
600 Supplies				
610 General Supplies	194.00	39,379.00		39,573.00
Total Supplies	\$194.00	\$39,379.00		\$39,573.00
Total 1210 Life Skills Support	\$194.00	\$124,100.00	\$236,332.00	\$360,626.00

General Fund (10)

1220 Sensory Support

300 Purchased Professional and Technical Services

322 Professional Educational Services – lus

Total Purchased Professional and Technical Services

Total 1220 Sensory Support

<u>Elementary</u>	<u>Secondary</u>	<u>Federal</u>	<u>Total</u>
631,597.00	566,736.00		1,198,333.00
\$631,597.00	\$566,736.00		\$1,198,333.00
\$631,597.00	\$566,736.00		\$1,198,333.00

General Fund (10)

1230 Emotional Support

	<u>Elementary</u>	<u>Secondary</u>	<u>Federal</u>	<u>Total</u>
100 Personnel Services – Salaries				
100 Personnel Services – Salaries	312,878.00	105,645.00	62,079.00	480,602.00
Total Personnel Services – Salaries	\$312,878.00	\$105,645.00	\$62,079.00	\$480,602.00
200 Personnel Services – Employee Benefits				
210 Group Insurance – Contracted Provider	92,008.00	21,264.00	21,039.00	134,311.00
220 Social Security Contributions	23,379.00	7,899.00	4,574.00	35,852.00
230 PSERS Retirement Contributions	112,182.00	37,250.00	22,416.00	171,848.00
250 Unemployment Compensation	233.00	117.00		350.00
260 Workers' Compensation	6,310.00	565.00	1,496.00	8,371.00
Total Personnel Services – Employee Benefits	\$234,112.00	\$67,095.00	\$49,525.00	\$350,732.00
600 Supplies				
610 General Supplies	3,092.00	1,267.00		4,359.00
650 Supplies & Fees – Technology Related	265.00			265.00
Total Supplies	\$3,357.00	\$1,267.00		\$4,624.00
Total 1230 Emotional Support	\$550,347.00	\$174,007.00	\$111,604.00	\$835,958.00

General Fund (10)

1240 Academic Support

	<u>Elementary</u>	<u>Secondary</u>	<u>Federal</u>	<u>Total</u>
100 Personnel Services – Salaries				
100 Personnel Services – Salaries	1,174,148.00	1,275,848.00	380,763.00	2,830,759.00
Total Personnel Services – Salaries	\$1,174,148.00	\$1,275,848.00	\$380,763.00	\$2,830,759.00
200 Personnel Services – Employee Benefits				
210 Group Insurance – Contracted Provider	276,721.00	242,423.00	64,728.00	583,872.00
220 Social Security Contributions	86,805.00	95,437.00	28,316.00	210,558.00
230 PSERS Retirement Contributions	412,351.00	445,981.00	133,010.00	991,342.00
250 Unemployment Compensation	861.00	865.00	292.00	2,018.00
260 Workers' Compensation	4,176.00	4,143.00	1,308.00	9,627.00
280 Other Post-Employment Benefits (OPEB)	30,817.00			30,817.00
Total Personnel Services – Employee Benefits	\$811,731.00	\$788,849.00	\$227,654.00	\$1,828,234.00
500 Other Purchased Services				
510 Student Transportation Services	232.00	4,021.00		4,253.00
580 Travel		58.00		58.00
Total Other Purchased Services	\$232.00	\$4,079.00		\$4,311.00
600 Supplies				
610 General Supplies	12,442.00	6,972.00		19,414.00
630 Food		38.00		38.00
640 Books and Periodicals	1,579.00	90.00		1,669.00
650 Supplies & Fees – Technology Related	2,832.00	1,290.00		4,122.00
Total Supplies	\$16,853.00	\$8,390.00		\$25,243.00
800 Other Objects				
810 Dues and Fees	20.00	4,622.00		4,642.00
Total Other Objects	\$20.00	\$4,622.00		\$4,642.00
Total 1240 Academic Support	\$2,002,984.00	\$2,081,788.00	\$608,417.00	\$4,693,189.00

General Fund (10)

	<u>Elementary</u>	<u>Secondary</u>	<u>Federal</u>	<u>Total</u>
1241 Learning Support – Public				
100 Personnel Services – Salaries				
100 Personnel Services – Salaries	996,002.00	990,122.00	380,226.00	2,366,350.00
Total Personnel Services – Salaries	\$996,002.00	\$990,122.00	\$380,226.00	\$2,366,350.00
200 Personnel Services – Employee Benefits				
210 Group Insurance – Contracted Provider	247,249.00	217,192.00	64,728.00	529,169.00
220 Social Security Contributions	73,505.00	73,759.00	28,316.00	175,580.00
230 PSERS Retirement Contributions	349,537.00	346,582.00	133,010.00	829,129.00
250 Unemployment Compensation	712.00	700.00	292.00	1,704.00
260 Workers' Compensation	3,415.00	3,364.00	1,308.00	8,087.00
280 Other Post-Employment Benefits (OPEB)	30,817.00			30,817.00
Total Personnel Services – Employee Benefits	\$705,235.00	\$641,597.00	\$227,654.00	\$1,574,486.00
600 Supplies				
610 General Supplies	9,183.00	3,208.00		12,391.00
640 Books and Periodicals	458.00	90.00		548.00
650 Supplies & Fees – Technology Related	1,305.00	1,158.00		2,463.00
Total Supplies	\$10,946.00	\$4,456.00		\$15,402.00
Total 1241 Learning Support – Public	\$1,712,183.00	\$1,636,175.00	\$607,880.00	\$3,956,238.00

General Fund (10)

1243 Gifted Support

	<u>Elementary</u>	<u>Secondary</u>	<u>Federal</u>	<u>Total</u>
100 Personnel Services – Salaries				
100 Personnel Services – Salaries	178,146.00	285,726.00	537.00	464,409.00
Total Personnel Services – Salaries	\$178,146.00	\$285,726.00	\$537.00	\$464,409.00
200 Personnel Services – Employee Benefits				
210 Group Insurance – Contracted Provider	29,472.00	25,231.00		54,703.00
220 Social Security Contributions	13,300.00	21,678.00		34,978.00
230 PSERS Retirement Contributions	62,814.00	99,399.00		162,213.00
250 Unemployment Compensation	149.00	165.00		314.00
260 Workers' Compensation	761.00	779.00		1,540.00
Total Personnel Services – Employee Benefits	\$106,496.00	\$147,252.00		\$253,748.00
500 Other Purchased Services				
510 Student Transportation Services	232.00	4,021.00		4,253.00
580 Travel		58.00		58.00
Total Other Purchased Services	\$232.00	\$4,079.00		\$4,311.00
600 Supplies				
610 General Supplies	3,259.00	3,764.00		7,023.00
630 Food		38.00		38.00
640 Books and Periodicals	1,121.00			1,121.00
650 Supplies & Fees – Technology Related	1,527.00	132.00		1,659.00
Total Supplies	\$5,907.00	\$3,934.00		\$9,841.00
800 Other Objects				
810 Dues and Fees	20.00	4,622.00		4,642.00
Total Other Objects	\$20.00	\$4,622.00		\$4,642.00
Total 1243 Gifted Support	\$290,801.00	\$445,613.00	\$537.00	\$736,951.00

General Fund (10)

1260 Physical Support

300 Purchased Professional and Technical Services

322 Professional Educational Services – lus

Total Purchased Professional and Technical Services

Total 1260 Physical Support

	<u>Elementary</u>	<u>Secondary</u>	<u>Federal</u>	<u>Total</u>
	119,177.00	106,939.00		226,116.00
	\$119,177.00	\$106,939.00		\$226,116.00
	\$119,177.00	\$106,939.00		\$226,116.00

General Fund (10)

1280 Early Intervention Support

300 Purchased Professional and Technical Services

322 Professional Educational Services – lus

Total Purchased Professional and Technical Services

Total 1280 Early Intervention Support

	<u>Elementary</u>	<u>Secondary</u>	<u>Federal</u>	<u>Total</u>
	18,646.00		3,552.00	22,198.00
	\$18,646.00		\$3,552.00	\$22,198.00
	\$18,646.00		\$3,552.00	\$22,198.00

General Fund (10)

	<u>Elementary</u>	<u>Secondary</u>	<u>Federal</u>	<u>Total</u>
1290 Special Programs - Other Support				
100 Personnel Services – Salaries				
100 Personnel Services – Salaries	1,064,573.00	627,390.00		1,691,963.00
Total Personnel Services – Salaries	\$1,064,573.00	\$627,390.00		\$1,691,963.00
200 Personnel Services – Employee Benefits				
210 Group Insurance – Contracted Provider	613,819.00	393,708.00		1,007,527.00
220 Social Security Contributions	76,050.00	44,491.00		120,541.00
230 PSERS Retirement Contributions	349,911.00	209,048.00		558,959.00
250 Unemployment Compensation	2,567.00	1,575.00		4,142.00
260 Workers' Compensation	3,325.00	2,146.00		5,471.00
280 Other Post-Employment Benefits (OPEB)	9,695.00	2,478.00		12,173.00
Total Personnel Services – Employee Benefits	\$1,055,367.00	\$653,446.00		\$1,708,813.00
300 Purchased Professional and Technical Services				
322 Professional Educational Services – Ius		4,625.00		4,625.00
329 Professional Educational Services – Other	5,516.00	152,097.00		157,613.00
Total Purchased Professional and Technical Services	\$5,516.00	\$156,722.00		\$162,238.00
500 Other Purchased Services				
562 Tuition To Pennsylvania Charter Schools	124,730.00	248,359.00		373,089.00
567 Tuition To Approved Private Schools (APS) and PA Chartered Schools for the Deaf and Blind	549,432.00	1,065,126.00	6,357.00	1,620,915.00
569 Tuition – Other	53,143.00	163,149.00		216,292.00
Total Other Purchased Services	\$727,305.00	\$1,476,634.00	\$6,357.00	\$2,210,296.00
600 Supplies				
610 General Supplies			10,736.00	10,736.00
640 Books and Periodicals			4,303.00	4,303.00
650 Supplies & Fees – Technology Related			3,871.00	3,871.00
Total Supplies			\$18,910.00	\$18,910.00
Total 1290 Special Programs - Other Support	\$2,852,761.00	\$2,914,192.00	\$25,267.00	\$5,792,220.00

LEA : 103021003 Pine-Richland SD

Printed 11/30/2023 8:54:09 AM

General Fund (10)

1300 Vocational Education

Elementary

Secondary

Federal

Total

500 Other Purchased Services

564 Tuition To Career and Technology Centers

687,133.00

687,133.00

Total Other Purchased Services

\$687,133.00

\$687,133.00

Total 1300 Vocational Education

\$687,133.00

\$687,133.00

General Fund (10)

1400 Other Instructional Programs – Elementary / Secondary

100 Personnel Services – Salaries

	<u>Elementary</u>	<u>Secondary</u>	<u>Federal</u>	<u>Total</u>
100 Personnel Services – Salaries		9,089.00		9,089.00
Total Personnel Services – Salaries		\$9,089.00		\$9,089.00
200 Personnel Services – Employee Benefits				
210 Group Insurance – Contracted Provider		842.00		842.00
220 Social Security Contributions		672.00		672.00
230 PSERS Retirement Contributions		3,205.00		3,205.00
250 Unemployment Compensation	20.00	61.00		81.00
260 Workers' Compensation	12.00	35.00		47.00
Total Personnel Services – Employee Benefits	\$32.00	\$4,815.00		\$4,847.00
Total 1400 Other Instructional Programs – Elementary / Secondary	\$32.00	\$13,904.00		\$13,936.00

General Fund (10)

	<u>Elementary</u>	<u>Secondary</u>	<u>Federal</u>	<u>Total</u>
1430 Homebound Instruction				
100 Personnel Services – Salaries				
100 Personnel Services – Salaries		9,089.00		9,089.00
Total Personnel Services – Salaries		\$9,089.00		\$9,089.00
200 Personnel Services – Employee Benefits				
210 Group Insurance – Contracted Provider		842.00		842.00
220 Social Security Contributions		672.00		672.00
230 PSERS Retirement Contributions		3,205.00		3,205.00
250 Unemployment Compensation	20.00	61.00		81.00
260 Workers' Compensation	12.00	35.00		47.00
Total Personnel Services – Employee Benefits	\$32.00	\$4,815.00		\$4,847.00
Total 1430 Homebound Instruction	\$32.00	\$13,904.00		\$13,936.00

General Fund (10)

1500 Nonpublic School Programs

<u>Elementary</u>	<u>Secondary</u>	<u>Federal</u>	<u>Total</u>
-------------------	------------------	----------------	--------------

300 Purchased Professional and Technical Services

322 Professional Educational Services – lus		7,269.00	7,269.00
---	--	----------	----------

360 Employee Training and Development Services		5,501.00	5,501.00
--	--	----------	----------

Total Purchased Professional and Technical Services		\$12,770.00	\$12,770.00
--	--	--------------------	--------------------

600 Supplies

610 General Supplies		1,143.00	1,143.00
----------------------	--	----------	----------

640 Books and Periodicals		1,057.00	1,057.00
---------------------------	--	----------	----------

Total Supplies		\$2,200.00	\$2,200.00
-----------------------	--	-------------------	-------------------

Total 1500 Nonpublic School Programs		\$14,970.00	\$14,970.00
---	--	--------------------	--------------------

LEA : 103021003 Pine-Richland SD

Printed 11/30/2023 8:54:14 AM

General Fund (10)

2000 Support Services

Total

100 Personnel Services – Salaries

100 Personnel Services – Salaries 8,643,022.00

Total Personnel Services – Salaries

\$8,643,022.00

200 Personnel Services – Employee Benefits

210 Group Insurance – Contracted Provider 1,953,532.00

220 Social Security Contributions 634,145.00

230 PSERS Retirement Contributions 2,969,455.00

240 Tuition Reimbursement 38,857.00

250 Unemployment Compensation 10,999.00

260 Workers' Compensation 28,952.00

280 Other Post-Employment Benefits (OPEB) 61,655.00

299 All Other Employee Benefits 24,265.00

Total Personnel Services – Employee Benefits

\$5,721,860.00

300 Purchased Professional and Technical Services

310 Official / Administrative Services 266,417.00

322 Professional Educational Services – Ius 42,798.00

323 Professional Educational Services – Other Educational Agencies 15,565.00

329 Professional Educational Services – Other 850,642.00

330 Other Professional Services 433,002.00

340 Technical Services 112,514.00

350 Security / Safety Services 190,974.00

360 Employee Training and Development Services 54,172.00

390 Other Purchased Professional and Technical Services 4,005.00

Total Purchased Professional and Technical Services

\$1,970,089.00

400 Purchased Property Services

410 Cleaning Services 74,460.00

420 Utility Services 152,444.00

430 Repairs and Maintenance Services 137,878.00

440 Rentals 32,644.00

460 Extermination Services 12,449.00

Total Purchased Property Services

\$409,875.00

500 Other Purchased Services

510 Student Transportation Services 116.00

513 Contracted Carriers 5,349,686.00

520 Insurance – General 85,689.00

522 Automotive Liability Insurance 5,911.00

523 General Property and Liability Insurance 171,721.00

530 Communications 142,743.00

549 Other Advertising/Public Relations 14,720.00

550 Printing and Binding 26,364.00

580 Travel 23,014.00

595 IU Payments By Withholding 86,896.00

599 Other Miscellaneous Purchased Services 910.00

Total Other Purchased Services

\$5,907,770.00

LEA : 103021003 Pine-Richland SD

Printed 11/30/2023 8:54:14 AM

General Fund (10)

2000 Support Services

Total

600 Supplies

610 General Supplies	629,154.00
620 Energy	1,328,096.00
630 Food	24,575.00
640 Books and Periodicals	62,538.00
650 Supplies & Fees – Technology Related	1,299,449.00

Total Supplies	\$3,343,812.00
-----------------------	-----------------------

700 Property

762 Capitalized Equipment - Replacement	5,412.00
---	----------

Total Property	\$5,412.00
-----------------------	-------------------

800 Other Objects

810 Dues and Fees	80,504.00
820 Claims and Judgments Against the LEA	46,840.00
890 Miscellaneous Expenditures	275.00

Total Other Objects	\$127,619.00
----------------------------	---------------------

Total 2000 Support Services	\$26,129,459.00
------------------------------------	------------------------

LEA : 103021003 Pine-Richland SD

Printed 11/30/2023 8:54:14 AM

General Fund (10)

	<u>Elementary</u>	<u>Secondary</u>	<u>Federal</u>	<u>Total</u>
2100 Support Services – Students				
100 Personnel Services – Salaries				
100 Personnel Services – Salaries	724,724.00	833,729.00		1,728,895.00
Total Personnel Services – Salaries	\$724,724.00	\$833,729.00		\$1,728,895.00
200 Personnel Services – Employee Benefits				
210 Group Insurance – Contracted Provider	155,573.00	200,160.00		405,029.00
220 Social Security Contributions	53,740.00	61,821.00		128,184.00
230 PSERS Retirement Contributions	253,929.00	292,978.00		606,604.00
250 Unemployment Compensation	670.00	929.00		1,812.00
260 Workers' Compensation	2,364.00	2,897.00		5,828.00
299 All Other Employee Benefits	1,073.00	962.00		2,035.00
Total Personnel Services – Employee Benefits	\$467,349.00	\$559,747.00		\$1,149,492.00
300 Purchased Professional and Technical Services				
322 Professional Educational Services – lus	1,953.00	1,752.00		3,705.00
329 Professional Educational Services – Other	82,208.00	73,766.00		155,974.00
340 Technical Services		94,106.00		94,106.00
Total Purchased Professional and Technical Services	\$84,161.00	\$169,624.00		\$253,785.00
500 Other Purchased Services				
510 Student Transportation Services		116.00		116.00
550 Printing and Binding	31.00	28.00		59.00
580 Travel		269.00		269.00
Total Other Purchased Services	\$31.00	\$413.00		\$444.00
600 Supplies				
610 General Supplies	11,201.00	9,905.00		21,306.00
630 Food	41.00	102.00		143.00
640 Books and Periodicals	1,624.00	259.00		2,386.00
650 Supplies & Fees – Technology Related	67,305.00	74,986.00	9,849.00	152,140.00
Total Supplies	\$80,171.00	\$85,252.00	\$9,849.00	\$175,975.00
800 Other Objects				
810 Dues and Fees	785.00	29,227.00		30,012.00
Total Other Objects	\$785.00	\$29,227.00		\$30,012.00
Total 2100 Support Services – Students	\$1,357,221.00	\$1,677,992.00	\$9,849.00	\$3,338,603.00

General Fund (10)

2110 Supervision of Student Services

100 Personnel Services – Salaries

	<u>Elementary</u>	<u>Secondary</u>	<u>Federal</u>	<u>Total</u>
100 Personnel Services – Salaries	47,389.00	42,523.00		89,912.00
Total Personnel Services – Salaries	\$47,389.00	\$42,523.00		\$89,912.00

200 Personnel Services – Employee Benefits

210 Group Insurance – Contracted Provider	10,982.00	9,854.00		20,836.00
220 Social Security Contributions	3,459.00	3,104.00		6,563.00
230 PSERS Retirement Contributions	16,709.00	14,993.00		31,702.00
250 Unemployment Compensation	58.00	52.00		110.00
260 Workers' Compensation	137.00	123.00		260.00

Total Personnel Services – Employee Benefits	\$31,345.00	\$28,126.00		\$59,471.00
---	--------------------	--------------------	--	--------------------

Total 2110 Supervision of Student Services	\$78,734.00	\$70,649.00		\$149,383.00
---	--------------------	--------------------	--	---------------------

General Fund (10)

	<u>Elementary</u>	<u>Secondary</u>	<u>Federal</u>	<u>Total</u>
2111 Supervision of Student Services – Head of Component				
100 Personnel Services – Salaries				
100 Personnel Services – Salaries	47,389.00	42,523.00		89,912.00
Total Personnel Services – Salaries	\$47,389.00	\$42,523.00		\$89,912.00
200 Personnel Services – Employee Benefits				
210 Group Insurance – Contracted Provider	10,982.00	9,854.00		20,836.00
220 Social Security Contributions	3,459.00	3,104.00		6,563.00
230 PSERS Retirement Contributions	16,709.00	14,993.00		31,702.00
250 Unemployment Compensation	58.00	52.00		110.00
260 Workers' Compensation	137.00	123.00		260.00
Total Personnel Services – Employee Benefits	\$31,345.00	\$28,126.00		\$59,471.00
Total 2111 Supervision of Student Services – Head of Component	\$78,734.00	\$70,649.00		\$149,383.00

LEA : 103021003 Pine-Richland SD

Printed 11/30/2023 8:54:14 AM

General Fund (10)

	<u>Elementary</u>	<u>Secondary</u>	<u>Federal</u>	<u>Total</u>
2120 Guidance Services				
100 Personnel Services – Salaries				
100 Personnel Services – Salaries	530,832.00	659,748.00		1,190,580.00
Total Personnel Services – Salaries	\$530,832.00	\$659,748.00		\$1,190,580.00
200 Personnel Services – Employee Benefits				
210 Group Insurance – Contracted Provider	121,375.00	169,474.00		290,849.00
220 Social Security Contributions	39,306.00	48,869.00		88,175.00
230 PSERS Retirement Contributions	185,490.00	231,567.00		417,057.00
250 Unemployment Compensation	489.00	767.00		1,256.00
260 Workers' Compensation	1,647.00	2,253.00		3,900.00
Total Personnel Services – Employee Benefits	\$348,307.00	\$452,930.00		\$801,237.00
300 Purchased Professional and Technical Services				
340 Technical Services		94,106.00		94,106.00
Total Purchased Professional and Technical Services		\$94,106.00		\$94,106.00
500 Other Purchased Services				
510 Student Transportation Services		116.00		116.00
580 Travel		269.00		269.00
Total Other Purchased Services		\$385.00		\$385.00
600 Supplies				
610 General Supplies	2,406.00	2,013.00		4,419.00
630 Food		65.00		65.00
640 Books and Periodicals	1,527.00	172.00		1,699.00
650 Supplies & Fees – Technology Related		14,593.00	9,849.00	24,442.00
Total Supplies	\$3,933.00	\$16,843.00	\$9,849.00	\$30,625.00
800 Other Objects				
810 Dues and Fees	189.00	28,693.00		28,882.00
Total Other Objects	\$189.00	\$28,693.00		\$28,882.00
Total 2120 Guidance Services	\$883,261.00	\$1,252,705.00	\$9,849.00	\$2,145,815.00

LEA : 103021003 Pine-Richland SD

Printed 11/30/2023 8:54:14 AM

General Fund (10)

	<u>Elementary</u>	<u>Secondary</u>	<u>Federal</u>	<u>Total</u>
2140 Psychological Services				
100 Personnel Services – Salaries				
100 Personnel Services – Salaries	146,503.00	131,458.00		277,961.00
Total Personnel Services – Salaries	\$146,503.00	\$131,458.00		\$277,961.00
200 Personnel Services – Employee Benefits				
210 Group Insurance – Contracted Provider	23,216.00	20,832.00		44,048.00
220 Social Security Contributions	10,975.00	9,848.00		20,823.00
230 PSERS Retirement Contributions	51,730.00	46,418.00		98,148.00
250 Unemployment Compensation	123.00	110.00		233.00
260 Workers' Compensation	580.00	521.00		1,101.00
299 All Other Employee Benefits	1,073.00	962.00		2,035.00
Total Personnel Services – Employee Benefits	\$87,697.00	\$78,691.00		\$166,388.00
300 Purchased Professional and Technical Services				
322 Professional Educational Services – Ius	1,953.00	1,752.00		3,705.00
329 Professional Educational Services – Other	82,208.00	73,766.00		155,974.00
Total Purchased Professional and Technical Services	\$84,161.00	\$75,518.00		\$159,679.00
500 Other Purchased Services				
550 Printing and Binding	31.00	28.00		59.00
Total Other Purchased Services	\$31.00	\$28.00		\$59.00
600 Supplies				
610 General Supplies	8,795.00	7,892.00		16,687.00
630 Food	41.00	37.00		78.00
640 Books and Periodicals	97.00	87.00		184.00
650 Supplies & Fees – Technology Related	67,305.00	60,393.00		127,698.00
Total Supplies	\$76,238.00	\$68,409.00		\$144,647.00
800 Other Objects				
810 Dues and Fees	596.00	534.00		1,130.00
Total Other Objects	\$596.00	\$534.00		\$1,130.00
Total 2140 Psychological Services	\$395,226.00	\$354,638.00		\$749,864.00

General Fund (10)

2160 Social Work Services

Elementary

Secondary

Federal

Total

100 Personnel Services – Salaries

100 Personnel Services – Salaries

73,215.00

Total Personnel Services – Salaries

\$73,215.00

200 Personnel Services – Employee Benefits

210 Group Insurance – Contracted Provider

22,508.00

220 Social Security Contributions

5,403.00

230 PSERS Retirement Contributions

25,816.00

250 Unemployment Compensation

58.00

260 Workers' Compensation

249.00

Total Personnel Services – Employee Benefits

\$54,034.00

600 Supplies

610 General Supplies

153.00

Total Supplies

\$153.00

Total 2160 Social Work Services

\$127,402.00

General Fund (10)

2170 Student Accounting Services

Elementary

Secondary

Federal

Total

100 Personnel Services – Salaries

100 Personnel Services – Salaries

97,227.00

Total Personnel Services – Salaries

\$97,227.00

200 Personnel Services – Employee Benefits

210 Group Insurance – Contracted Provider

26,788.00

220 Social Security Contributions

7,220.00

230 PSERS Retirement Contributions

33,881.00

250 Unemployment Compensation

155.00

260 Workers' Compensation

318.00

Total Personnel Services – Employee Benefits

\$68,362.00

600 Supplies

610 General Supplies

47.00

640 Books and Periodicals

503.00

Total Supplies

\$550.00

Total 2170 Student Accounting Services

\$166,139.00

General Fund (10)

2200 Support Services – Instructional Staff

	<u>Elementary</u>	<u>Secondary</u>	<u>Federal</u>	<u>Total</u>
100 Personnel Services – Salaries				
100 Personnel Services – Salaries	584,189.00	305,161.00		889,350.00
Total Personnel Services – Salaries	\$584,189.00	\$305,161.00		\$889,350.00
200 Personnel Services – Employee Benefits				
210 Group Insurance – Contracted Provider	110,708.00	97,946.00		208,654.00
220 Social Security Contributions	43,366.00	22,340.00		65,706.00
230 PSERS Retirement Contributions	184,593.00	107,410.00		292,003.00
240 Tuition Reimbursement	5,733.00	13,321.00		19,054.00
250 Unemployment Compensation	967.00	325.00		1,292.00
260 Workers' Compensation	1,992.00	994.00		2,986.00
280 Other Post-Employment Benefits (OPEB)	10,870.00	9,754.00		20,624.00
299 All Other Employee Benefits	246.00	221.00		467.00
Total Personnel Services – Employee Benefits	\$358,475.00	\$252,311.00		\$610,786.00
300 Purchased Professional and Technical Services				
322 Professional Educational Services – Ius	10,436.00	9,364.00		19,800.00
323 Professional Educational Services – Other Educational Agencies	8,204.00	7,361.00		15,565.00
360 Employee Training and Development Services	12,326.00	9,916.00	13,188.00	35,430.00
Total Purchased Professional and Technical Services	\$30,966.00	\$26,641.00	\$13,188.00	\$70,795.00
400 Purchased Property Services				
430 Repairs and Maintenance Services	2,096.00	5,209.00		7,305.00
Total Purchased Property Services	\$2,096.00	\$5,209.00		\$7,305.00
500 Other Purchased Services				
550 Printing and Binding	580.00	515.00		1,095.00
580 Travel	3,578.00	3,155.00		6,733.00
Total Other Purchased Services	\$4,158.00	\$3,670.00		\$7,828.00
600 Supplies				
610 General Supplies	5,226.00	2,252.00	2,830.00	10,308.00
630 Food	5,971.00	14,538.00		20,509.00
640 Books and Periodicals	21,034.00	19,069.00		40,103.00
650 Supplies & Fees – Technology Related	32,128.00	37,810.00		69,938.00
Total Supplies	\$64,359.00	\$73,669.00	\$2,830.00	\$140,858.00
800 Other Objects				
810 Dues and Fees	874.00	850.00		1,724.00
Total Other Objects	\$874.00	\$850.00		\$1,724.00
Total 2200 Support Services – Instructional Staff	\$1,045,117.00	\$667,511.00	\$16,018.00	\$1,728,646.00

General Fund (10)

2210 Supervision of Educational Media Services

	<u>Elementary</u>	<u>Secondary</u>	<u>Federal</u>	<u>Total</u>
100 Personnel Services – Salaries				
100 Personnel Services – Salaries	76,004.00	68,198.00		144,202.00
Total Personnel Services – Salaries	\$76,004.00	\$68,198.00		\$144,202.00
200 Personnel Services – Employee Benefits				
210 Group Insurance – Contracted Provider	19,521.00	17,516.00		37,037.00
220 Social Security Contributions	5,514.00	4,948.00		10,462.00
230 PSERS Retirement Contributions	26,799.00	24,047.00		50,846.00
250 Unemployment Compensation	87.00	78.00		165.00
260 Workers' Compensation	239.00	215.00		454.00
Total Personnel Services – Employee Benefits	\$52,160.00	\$46,804.00		\$98,964.00
Total 2210 Supervision of Educational Media Services	\$128,164.00	\$115,002.00		\$243,166.00

General Fund (10)

2219 Supervision of Educational Media Services – All Other Supervision

	<u>Elementary</u>	<u>Secondary</u>	<u>Federal</u>	<u>Total</u>
100 Personnel Services – Salaries				
100 Personnel Services – Salaries	76,004.00	68,198.00		144,202.00
Total Personnel Services – Salaries	\$76,004.00	\$68,198.00		\$144,202.00
200 Personnel Services – Employee Benefits				
210 Group Insurance – Contracted Provider	19,521.00	17,516.00		37,037.00
220 Social Security Contributions	5,514.00	4,948.00		10,462.00
230 PSERS Retirement Contributions	26,799.00	24,047.00		50,846.00
250 Unemployment Compensation	87.00	78.00		165.00
260 Workers' Compensation	239.00	215.00		454.00
Total Personnel Services – Employee Benefits	\$52,160.00	\$46,804.00		\$98,964.00
Total 2219 Supervision of Educational Media Services – All Other Supervision	\$128,164.00	\$115,002.00		\$243,166.00

General Fund (10)

	<u>Elementary</u>	<u>Secondary</u>	<u>Federal</u>	<u>Total</u>
2220 Technology Support Services				
400 Purchased Property Services				
430 Repairs and Maintenance Services	675.00	3,933.00		4,608.00
Total Purchased Property Services	\$675.00	\$3,933.00		\$4,608.00
600 Supplies				
630 Food	5,923.00	14,495.00		20,418.00
Total Supplies	\$5,923.00	\$14,495.00		\$20,418.00
Total 2220 Technology Support Services	\$6,598.00	\$18,428.00		\$25,026.00

General Fund (10)

2250 School Library Services

	<u>Elementary</u>	<u>Secondary</u>	<u>Federal</u>	<u>Total</u>
100 Personnel Services – Salaries				
100 Personnel Services – Salaries	340,173.00	146,848.00		487,021.00
Total Personnel Services – Salaries	\$340,173.00	\$146,848.00		\$487,021.00
200 Personnel Services – Employee Benefits				
210 Group Insurance – Contracted Provider	73,140.00	64,344.00		137,484.00
220 Social Security Contributions	25,144.00	10,628.00		35,772.00
230 PSERS Retirement Contributions	119,945.00	51,779.00		171,724.00
250 Unemployment Compensation	268.00	181.00		449.00
260 Workers' Compensation	1,122.00	495.00		1,617.00
Total Personnel Services – Employee Benefits	\$219,619.00	\$127,427.00		\$347,046.00
500 Other Purchased Services				
550 Printing and Binding	580.00	515.00		1,095.00
Total Other Purchased Services	\$580.00	\$515.00		\$1,095.00
600 Supplies				
610 General Supplies	4,107.00	1,248.00		5,355.00
640 Books and Periodicals	20,849.00	18,902.00		39,751.00
650 Supplies & Fees – Technology Related	22,358.00	29,044.00		51,402.00
Total Supplies	\$47,314.00	\$49,194.00		\$96,508.00
800 Other Objects				
810 Dues and Fees	200.00	245.00		445.00
Total Other Objects	\$200.00	\$245.00		\$445.00
Total 2250 School Library Services	\$607,886.00	\$324,229.00		\$932,115.00

General Fund (10)

2260 Instruction and Curriculum Development Services

	<u>Elementary</u>	<u>Secondary</u>	<u>Federal</u>	<u>Total</u>
100 Personnel Services – Salaries				
100 Personnel Services – Salaries	100,429.00	90,115.00		190,544.00
Total Personnel Services – Salaries	\$100,429.00	\$90,115.00		\$190,544.00
200 Personnel Services – Employee Benefits				
210 Group Insurance – Contracted Provider	17,928.00	16,086.00		34,014.00
220 Social Security Contributions	7,538.00	6,764.00		14,302.00
230 PSERS Retirement Contributions	35,199.00	31,584.00		66,783.00
250 Unemployment Compensation	74.00	66.00		140.00
260 Workers' Compensation	317.00	284.00		601.00
280 Other Post-Employment Benefits (OPEB)	10,870.00	9,754.00		20,624.00
299 All Other Employee Benefits	246.00	221.00		467.00
Total Personnel Services – Employee Benefits	\$72,172.00	\$64,759.00		\$136,931.00
300 Purchased Professional and Technical Services				
322 Professional Educational Services – Ius	10,436.00	9,364.00		19,800.00
323 Professional Educational Services – Other Educational Agencies	8,204.00	7,361.00		15,565.00
Total Purchased Professional and Technical Services	\$18,640.00	\$16,725.00		\$35,365.00
400 Purchased Property Services				
430 Repairs and Maintenance Services	327.00	294.00		621.00
Total Purchased Property Services	\$327.00	\$294.00		\$621.00
500 Other Purchased Services				
580 Travel	1,330.00	1,193.00		2,523.00
Total Other Purchased Services	\$1,330.00	\$1,193.00		\$2,523.00
600 Supplies				
610 General Supplies	1,119.00	1,004.00	2,830.00	4,953.00
630 Food	48.00	43.00		91.00
640 Books and Periodicals	86.00	78.00		164.00
650 Supplies & Fees – Technology Related	9,770.00	8,766.00		18,536.00
Total Supplies	\$11,023.00	\$9,891.00	\$2,830.00	\$23,744.00
800 Other Objects				
810 Dues and Fees	327.00	293.00		620.00
Total Other Objects	\$327.00	\$293.00		\$620.00
Total 2260 Instruction and Curriculum Development Services	\$204,248.00	\$183,270.00	\$2,830.00	\$390,348.00

General Fund (10)

	<u>Elementary</u>	<u>Secondary</u>	<u>Federal</u>	<u>Total</u>
2270 Instructional Staff Professional Development Services				
200 <u>Personnel Services – Employee Benefits</u>				
210 Group Insurance – Contracted Provider	119.00			119.00
240 Tuition Reimbursement	5,733.00	13,321.00		19,054.00
Total Personnel Services – Employee Benefits	\$5,852.00	\$13,321.00		\$19,173.00
300 <u>Purchased Professional and Technical Services</u>				
360 Employee Training and Development Services	12,326.00	9,916.00	13,188.00	35,430.00
Total Purchased Professional and Technical Services	\$12,326.00	\$9,916.00	\$13,188.00	\$35,430.00
400 <u>Purchased Property Services</u>				
430 Repairs and Maintenance Services	1,094.00	982.00		2,076.00
Total Purchased Property Services	\$1,094.00	\$982.00		\$2,076.00
500 <u>Other Purchased Services</u>				
580 Travel	2,248.00	1,962.00		4,210.00
Total Other Purchased Services	\$2,248.00	\$1,962.00		\$4,210.00
600 <u>Supplies</u>				
640 Books and Periodicals	99.00	89.00		188.00
Total Supplies	\$99.00	\$89.00		\$188.00
800 <u>Other Objects</u>				
810 Dues and Fees	347.00	312.00		659.00
Total Other Objects	\$347.00	\$312.00		\$659.00
Total 2270 Instructional Staff Professional Development Services	\$21,966.00	\$26,582.00	\$13,188.00	\$61,736.00

General Fund (10)

	<u>Elementary</u>	<u>Secondary</u>	<u>Federal</u>	<u>Total</u>
2290 Other Instructional Staff Services				
100 Personnel Services – Salaries				
100 Personnel Services – Salaries	67,583.00			67,583.00
Total Personnel Services – Salaries	\$67,583.00			\$67,583.00
200 Personnel Services – Employee Benefits				
220 Social Security Contributions	5,170.00			5,170.00
230 PSERS Retirement Contributions	2,650.00			2,650.00
250 Unemployment Compensation	538.00			538.00
260 Workers' Compensation	314.00			314.00
Total Personnel Services – Employee Benefits	\$8,672.00			\$8,672.00
Total 2290 Other Instructional Staff Services	\$76,255.00			\$76,255.00

LEA : 103021003 Pine-Richland SD

Printed 11/30/2023 8:54:14 AM

General Fund (10)

	<u>Elementary</u>	<u>Secondary</u>	<u>Federal</u>	<u>Total</u>
2300 Support Services – Administration				
100 Personnel Services – Salaries				
100 Personnel Services – Salaries	925,873.00	765,963.00		2,414,788.00
Total Personnel Services – Salaries	\$925,873.00	\$765,963.00		\$2,414,788.00
200 Personnel Services – Employee Benefits				
210 Group Insurance – Contracted Provider	209,788.00	133,959.00		452,831.00
220 Social Security Contributions	68,641.00	57,868.00		176,819.00
230 PSERS Retirement Contributions	317,294.00	261,657.00		831,873.00
250 Unemployment Compensation	770.00	606.00		1,804.00
260 Workers' Compensation	3,100.00	2,744.00		8,295.00
280 Other Post-Employment Benefits (OPEB)	4,940.00	25,698.00		30,638.00
299 All Other Employee Benefits	3,520.00	3,658.00		9,158.00
Total Personnel Services – Employee Benefits	\$608,053.00	\$486,190.00		\$1,511,418.00
300 Purchased Professional and Technical Services				
310 Official / Administrative Services				266,417.00
329 Professional Educational Services – Other	12,184.00	4,637.00		35,321.00
330 Other Professional Services				333,276.00
340 Technical Services				18,408.00
Total Purchased Professional and Technical Services	\$12,184.00	\$4,637.00		\$653,422.00
400 Purchased Property Services				
440 Rentals		3,816.00		3,816.00
Total Purchased Property Services		\$3,816.00		\$3,816.00
500 Other Purchased Services				
520 Insurance – General				15,304.00
530 Communications	331.00	297.00		7,008.00
549 Other Advertising/Public Relations				12,330.00
550 Printing and Binding	4,916.00	4,743.00		23,775.00
580 Travel	516.00	1,683.00		5,553.00
Total Other Purchased Services	\$5,763.00	\$6,723.00		\$63,970.00
600 Supplies				
610 General Supplies	37,147.00	20,002.00		60,609.00
630 Food	504.00	885.00		1,832.00
640 Books and Periodicals	1,218.00			1,596.00
650 Supplies & Fees – Technology Related	1,149.00			12,172.00
Total Supplies	\$40,018.00	\$20,887.00		\$76,209.00
800 Other Objects				
810 Dues and Fees	3,049.00	4,393.00		33,320.00
820 Claims and Judgments Against the LEA				46,840.00
Total Other Objects	\$3,049.00	\$4,393.00		\$80,160.00
Total 2300 Support Services – Administration	\$1,594,940.00	\$1,292,609.00		\$4,803,783.00

LEA : 103021003 Pine-Richland SD

Printed 11/30/2023 8:54:14 AM

General Fund (10)

2320 Board Treasurer Services

Elementary

Secondary

Federal

Total

500 Other Purchased Services

520 Insurance – General

1,458.00

Total Other Purchased Services

\$1,458.00

Total 2320 Board Treasurer Services

\$1,458.00

General Fund (10)

	<u>Elementary</u>	<u>Secondary</u>	<u>Federal</u>	<u>Total</u>
2330 Tax Assessment and Collection Services				
300 <u>Purchased Professional and Technical Services</u>				
310 Official / Administrative Services				241,815.00
Total Purchased Professional and Technical Services				\$241,815.00
500 <u>Other Purchased Services</u>				
520 Insurance – General				13,546.00
530 Communications				2,424.00
Total Other Purchased Services				\$15,970.00
Total 2330 Tax Assessment and Collection Services				\$257,785.00

LEA : 103021003 Pine-Richland SD

Printed 11/30/2023 8:54:14 AM

General Fund (10)

2350 Legal and Accounting Services

Elementary

Secondary

Federal

Total

300 Purchased Professional and Technical Services

310 Official / Administrative Services

24,602.00

330 Other Professional Services

333,276.00

Total Purchased Professional and Technical Services

\$357,878.00

Total 2350 Legal and Accounting Services

\$357,878.00

General Fund (10)

	<u>Elementary</u>	<u>Secondary</u>	<u>Federal</u>	<u>Total</u>
2360 Office of the Superintendent / Executive Director Services				
100 Personnel Services – Salaries				
100 Personnel Services – Salaries				637,952.00
Total Personnel Services – Salaries				\$637,952.00
200 Personnel Services – Employee Benefits				
210 Group Insurance – Contracted Provider				91,907.00
220 Social Security Contributions				43,965.00
230 PSERS Retirement Contributions				223,223.00
250 Unemployment Compensation				335.00
260 Workers' Compensation				2,142.00
299 All Other Employee Benefits				1,320.00
Total Personnel Services – Employee Benefits				\$362,892.00
500 Other Purchased Services				
530 Communications	331.00	297.00		628.00
580 Travel				2,238.00
Total Other Purchased Services	\$331.00	\$297.00		\$2,866.00
600 Supplies				
610 General Supplies				1,038.00
630 Food				308.00
640 Books and Periodicals				350.00
Total Supplies				\$1,696.00
800 Other Objects				
810 Dues and Fees				7,576.00
Total Other Objects				\$7,576.00
Total 2360 Office of the Superintendent / Executive Director Services	\$331.00	\$297.00		\$1,012,982.00

LEA : 103021003 Pine-Richland SD

Printed 11/30/2023 8:54:14 AM

General Fund (10)

2370 Community Relations Services

Elementary Secondary Federal Total

100 Personnel Services – Salaries

100 Personnel Services – Salaries 85,000.00

Total Personnel Services – Salaries \$85,000.00

200 Personnel Services – Employee Benefits

210 Group Insurance – Contracted Provider 17,177.00

220 Social Security Contributions 6,345.00

230 PSERS Retirement Contributions 29,699.00

250 Unemployment Compensation 93.00

260 Workers' Compensation 309.00

299 All Other Employee Benefits 660.00

Total Personnel Services – Employee Benefits \$54,283.00

300 Purchased Professional and Technical Services

329 Professional Educational Services – Other 18,500.00

340 Technical Services 18,408.00

Total Purchased Professional and Technical Services \$36,908.00

500 Other Purchased Services

530 Communications 2,578.00

550 Printing and Binding 14,116.00

580 Travel 223.00

Total Other Purchased Services \$16,917.00

600 Supplies

610 General Supplies 2,151.00

640 Books and Periodicals 28.00

650 Supplies & Fees – Technology Related 2,994.00

Total Supplies \$5,173.00

800 Other Objects

810 Dues and Fees 430.00

Total Other Objects \$430.00

Total 2370 Community Relations Services \$198,711.00

General Fund (10)

2380 Office of the Principal Services

	<u>Elementary</u>	<u>Secondary</u>	<u>Federal</u>	<u>Total</u>
100 Personnel Services – Salaries				
100 Personnel Services – Salaries	925,873.00	765,963.00		1,691,836.00
Total Personnel Services – Salaries	\$925,873.00	\$765,963.00		\$1,691,836.00
200 Personnel Services – Employee Benefits				
210 Group Insurance – Contracted Provider	209,788.00	133,959.00		343,747.00
220 Social Security Contributions	68,641.00	57,868.00		126,509.00
230 PSERS Retirement Contributions	317,294.00	261,657.00		578,951.00
250 Unemployment Compensation	770.00	606.00		1,376.00
260 Workers' Compensation	3,100.00	2,744.00		5,844.00
280 Other Post-Employment Benefits (OPEB)	4,940.00	25,698.00		30,638.00
299 All Other Employee Benefits	3,520.00	3,658.00		7,178.00
Total Personnel Services – Employee Benefits	\$608,053.00	\$486,190.00		\$1,094,243.00
300 Purchased Professional and Technical Services				
329 Professional Educational Services – Other	12,184.00	4,637.00		16,821.00
Total Purchased Professional and Technical Services	\$12,184.00	\$4,637.00		\$16,821.00
400 Purchased Property Services				
440 Rentals		3,816.00		3,816.00
Total Purchased Property Services		\$3,816.00		\$3,816.00
500 Other Purchased Services				
550 Printing and Binding	4,916.00	4,743.00		9,659.00
580 Travel	516.00	1,683.00		2,199.00
Total Other Purchased Services	\$5,432.00	\$6,426.00		\$11,858.00
600 Supplies				
610 General Supplies	37,147.00	20,002.00		57,149.00
630 Food	504.00	885.00		1,389.00
640 Books and Periodicals	1,218.00			1,218.00
650 Supplies & Fees – Technology Related	1,149.00			1,149.00
Total Supplies	\$40,018.00	\$20,887.00		\$60,905.00
800 Other Objects				
810 Dues and Fees	3,049.00	4,393.00		7,442.00
Total Other Objects	\$3,049.00	\$4,393.00		\$7,442.00
Total 2380 Office of the Principal Services	\$1,594,609.00	\$1,292,312.00		\$2,886,921.00

General Fund (10)

	<u>Elementary</u>	<u>Secondary</u>	<u>Federal</u>	<u>Total</u>
2400 Support Services – Pupil Health				
100 Personnel Services – Salaries				
100 Personnel Services – Salaries				606,575.00
Total Personnel Services – Salaries				\$606,575.00
200 Personnel Services – Employee Benefits				
210 Group Insurance – Contracted Provider				123,531.00
220 Social Security Contributions				45,071.00
230 PSERS Retirement Contributions				210,048.00
250 Unemployment Compensation				599.00
260 Workers' Compensation				1,813.00
Total Personnel Services – Employee Benefits				\$381,062.00
300 Purchased Professional and Technical Services				
322 Professional Educational Services – lus				19,293.00
329 Professional Educational Services – Other				65,992.00
330 Other Professional Services				1,300.00
Total Purchased Professional and Technical Services				\$86,585.00
400 Purchased Property Services				
430 Repairs and Maintenance Services				680.00
Total Purchased Property Services				\$680.00
500 Other Purchased Services				
580 Travel				2.00
Total Other Purchased Services				\$2.00
600 Supplies				
610 General Supplies				15,662.00
630 Food				31.00
Total Supplies				\$15,693.00
Total 2400 Support Services – Pupil Health				\$1,090,597.00

LEA : 103021003 Pine-Richland SD

Printed 11/30/2023 8:54:14 AM

General Fund (10)

2420 Medical Services

Elementary

Secondary

Federal

Total

300 Purchased Professional and Technical Services

322 Professional Educational Services – lus

19,293.00

330 Other Professional Services

1,300.00

Total Purchased Professional and Technical Services

\$20,593.00

Total 2420 Medical Services

\$20,593.00

LEA : 103021003 Pine-Richland SD

Printed 11/30/2023 8:54:14 AM

General Fund (10)

2440 Nursing Services

Elementary Secondary Federal Total

100	<u>Personnel Services – Salaries</u>			
	100 Personnel Services – Salaries			606,575.00
Total Personnel Services – Salaries				\$606,575.00
200	<u>Personnel Services – Employee Benefits</u>			
	210 Group Insurance – Contracted Provider			123,531.00
	220 Social Security Contributions			45,071.00
	230 PSERS Retirement Contributions			210,048.00
	250 Unemployment Compensation			599.00
	260 Workers' Compensation			1,813.00
Total Personnel Services – Employee Benefits				\$381,062.00
300	<u>Purchased Professional and Technical Services</u>			
	329 Professional Educational Services – Other			65,992.00
Total Purchased Professional and Technical Services				\$65,992.00
400	<u>Purchased Property Services</u>			
	430 Repairs and Maintenance Services			345.00
Total Purchased Property Services				\$345.00
500	<u>Other Purchased Services</u>			
	580 Travel			2.00
Total Other Purchased Services				\$2.00
600	<u>Supplies</u>			
	610 General Supplies			10,308.00
	630 Food			31.00
Total Supplies				\$10,339.00
Total 2440 Nursing Services				\$1,064,315.00

LEA : 103021003 Pine-Richland SD

Printed 11/30/2023 8:54:14 AM

General Fund (10)

2490 Other Health Services

Elementary

Secondary

Federal

Total

400 Purchased Property Services

430 Repairs and Maintenance Services

335.00

Total Purchased Property Services

\$335.00

600 Supplies

610 General Supplies

5,354.00

Total Supplies

\$5,354.00

Total 2490 Other Health Services

\$5,689.00

General Fund (10)

	<u>Elementary</u>	<u>Secondary</u>	<u>Federal</u>	<u>Total</u>
2500 Support Services – Business				
100 Personnel Services – Salaries				
100 Personnel Services – Salaries				325,996.00
Total Personnel Services – Salaries				\$325,996.00
200 Personnel Services – Employee Benefits				
210 Group Insurance – Contracted Provider				69,028.00
220 Social Security Contributions				24,174.00
230 PSERS Retirement Contributions				114,946.00
250 Unemployment Compensation				232.00
260 Workers' Compensation				1,106.00
299 All Other Employee Benefits				660.00
Total Personnel Services – Employee Benefits				\$210,146.00
300 Purchased Professional and Technical Services				
329 Professional Educational Services – Other				6,417.00
Total Purchased Professional and Technical Services				\$6,417.00
400 Purchased Property Services				
440 Rentals				28,218.00
Total Purchased Property Services				\$28,218.00
500 Other Purchased Services				
530 Communications				14,050.00
550 Printing and Binding				1,373.00
580 Travel				351.00
Total Other Purchased Services				\$15,774.00
600 Supplies				
610 General Supplies				27,229.00
630 Food				893.00
640 Books and Periodicals				18,176.00
650 Supplies & Fees – Technology Related				41,054.00
Total Supplies				\$87,352.00
800 Other Objects				
810 Dues and Fees				12,686.00
890 Miscellaneous Expenditures				275.00
Total Other Objects				\$12,961.00
Total 2500 Support Services – Business				\$686,864.00

General Fund (10)

2510 Fiscal Services

Elementary Secondary Federal Total

100	<u>Personnel Services – Salaries</u>				
	100 Personnel Services – Salaries				325,996.00
Total Personnel Services – Salaries					\$325,996.00
200	<u>Personnel Services – Employee Benefits</u>				
	210 Group Insurance – Contracted Provider				69,028.00
	220 Social Security Contributions				24,174.00
	230 PSERS Retirement Contributions				114,946.00
	250 Unemployment Compensation				232.00
	260 Workers' Compensation				1,106.00
	299 All Other Employee Benefits				660.00
Total Personnel Services – Employee Benefits					\$210,146.00
300	<u>Purchased Professional and Technical Services</u>				
	329 Professional Educational Services – Other				6,000.00
Total Purchased Professional and Technical Services					\$6,000.00
500	<u>Other Purchased Services</u>				
	550 Printing and Binding				1,373.00
	580 Travel				351.00
Total Other Purchased Services					\$1,724.00
600	<u>Supplies</u>				
	610 General Supplies				2,388.00
	630 Food				893.00
	640 Books and Periodicals				18,176.00
	650 Supplies & Fees – Technology Related				41,054.00
Total Supplies					\$62,511.00
800	<u>Other Objects</u>				
	810 Dues and Fees				12,056.00
Total Other Objects					\$12,056.00
Total 2510 Fiscal Services					\$618,433.00

General Fund (10)

2512 Budgeting Services

Elementary

Secondary

Federal

Total

300 Purchased Professional and Technical Services

329 Professional Educational Services – Other

6,000.00

Total Purchased Professional and Technical Services

\$6,000.00

Total 2512 Budgeting Services

\$6,000.00

General Fund (10)

2513 Receiving and Disbursing Funds Services

Elementary Secondary Federal Total

100	<u>Personnel Services – Salaries</u>			
	100 Personnel Services – Salaries			41,230.00
Total Personnel Services – Salaries				\$41,230.00
200	<u>Personnel Services – Employee Benefits</u>			
	210 Group Insurance – Contracted Provider			20,184.00
	220 Social Security Contributions			2,956.00
	230 PSERS Retirement Contributions			14,538.00
	250 Unemployment Compensation			58.00
	260 Workers' Compensation			140.00
Total Personnel Services – Employee Benefits				\$37,876.00
500	<u>Other Purchased Services</u>			
	550 Printing and Binding			1,373.00
	580 Travel			15.00
Total Other Purchased Services				\$1,388.00
600	<u>Supplies</u>			
	610 General Supplies			674.00
	650 Supplies & Fees – Technology Related			770.00
Total Supplies				\$1,444.00
800	<u>Other Objects</u>			
	810 Dues and Fees			979.00
Total Other Objects				\$979.00
Total 2513 Receiving and Disbursing Funds Services				\$82,917.00

General Fund (10)

2514 Payroll Services

	<u>Elementary</u>	<u>Secondary</u>	<u>Federal</u>	<u>Total</u>
100 Personnel Services – Salaries				
100 Personnel Services – Salaries				61,601.00
Total Personnel Services – Salaries				\$61,601.00
200 Personnel Services – Employee Benefits				
210 Group Insurance – Contracted Provider				7,520.00
220 Social Security Contributions				4,640.00
230 PSERS Retirement Contributions				21,721.00
250 Unemployment Compensation				58.00
260 Workers' Compensation				209.00
Total Personnel Services – Employee Benefits				\$34,148.00
600 Supplies				
610 General Supplies				1,260.00
640 Books and Periodicals				18,176.00
Total Supplies				\$19,436.00
800 Other Objects				
810 Dues and Fees				160.00
Total Other Objects				\$160.00
Total 2514 Payroll Services				\$115,345.00

General Fund (10)

2515 Financial Accounting Services

Elementary Secondary Federal Total

100	<u>Personnel Services – Salaries</u>			
	100 Personnel Services – Salaries			69,740.00
Total Personnel Services – Salaries				\$69,740.00
200	<u>Personnel Services – Employee Benefits</u>			
	210 Group Insurance – Contracted Provider			21,160.00
	220 Social Security Contributions			5,128.00
	230 PSERS Retirement Contributions			24,590.00
	250 Unemployment Compensation			58.00
	260 Workers' Compensation			237.00
Total Personnel Services – Employee Benefits				\$51,173.00
500	<u>Other Purchased Services</u>			
	580 Travel			73.00
Total Other Purchased Services				\$73.00
600	<u>Supplies</u>			
	610 General Supplies			425.00
	630 Food			893.00
	650 Supplies & Fees – Technology Related			40,284.00
Total Supplies				\$41,602.00
800	<u>Other Objects</u>			
	810 Dues and Fees			288.00
Total Other Objects				\$288.00
Total 2515 Financial Accounting Services				\$162,876.00

LEA : 103021003 Pine-Richland SD

Printed 11/30/2023 8:54:14 AM

General Fund (10)

2519 Other Fiscal Services

Elementary

Secondary

Federal

Total

800 Other Objects

810 Dues and Fees

10,059.00

Total Other Objects

\$10,059.00

Total 2519 Other Fiscal Services

\$10,059.00

LEA : 103021003 Pine-Richland SD

Printed 11/30/2023 8:54:14 AM

General Fund (10)

	<u>Elementary</u>	<u>Secondary</u>	<u>Federal</u>	<u>Total</u>
2530 Warehousing and Distributing Services				
400 <u>Purchased Property Services</u>				
440 Rentals				3,610.00
Total Purchased Property Services				\$3,610.00
500 <u>Other Purchased Services</u>				
530 Communications				14,050.00
Total Other Purchased Services				\$14,050.00
800 <u>Other Objects</u>				
890 Miscellaneous Expenditures				275.00
Total Other Objects				\$275.00
Total 2530 Warehousing and Distributing Services				\$17,935.00

General Fund (10)

	<u>Elementary</u>	<u>Secondary</u>	<u>Federal</u>	<u>Total</u>
2540 Printing, Publishing and Duplicating Services				
400 <u>Purchased Property Services</u>				
440 Rentals				24,608.00
Total Purchased Property Services				\$24,608.00
600 <u>Supplies</u>				
610 General Supplies				24,841.00
Total Supplies				\$24,841.00
800 <u>Other Objects</u>				
810 Dues and Fees				630.00
Total Other Objects				\$630.00
Total 2540 Printing, Publishing and Duplicating Services				\$50,079.00

LEA : 103021003 Pine-Richland SD

Printed 11/30/2023 8:54:14 AM

General Fund (10)

2590 Other Support Services – Business

Elementary

Secondary

Federal

Total

300 Purchased Professional and Technical Services

329 Professional Educational Services – Other

417.00

Total Purchased Professional and Technical Services

\$417.00

Total 2590 Other Support Services – Business

\$417.00

General Fund (10)

	<u>Elementary</u>	<u>Secondary</u>	<u>Federal</u>	<u>Total</u>
2600 Operation and Maintenance of Plant Services				
800 Other Objects				
810 Dues and Fees				1,263.00
Total Other Objects				\$1,263.00
Total 2600 Operation and Maintenance of Plant Services	\$259,055.00	\$230,123.00		\$6,255,941.00

General Fund (10)

	<u>Elementary</u>	<u>Secondary</u>	<u>Federal</u>	<u>Total</u>
2611 Supervision of Operation and Maintenance of Plant Services – Head of Component				
100 Personnel Services – Salaries				
100 Personnel Services – Salaries				109,762.00
Total Personnel Services – Salaries				\$109,762.00
200 Personnel Services – Employee Benefits				
210 Group Insurance – Contracted Provider				21,313.00
220 Social Security Contributions				8,214.00
230 PSERS Retirement Contributions				38,702.00
250 Unemployment Compensation				175.00
260 Workers' Compensation				665.00
299 All Other Employee Benefits				840.00
Total Personnel Services – Employee Benefits				\$69,909.00
500 Other Purchased Services				
599 Other Miscellaneous Purchased Services				910.00
Total Other Purchased Services				\$910.00
600 Supplies				
610 General Supplies	71.00	63.00		134.00
630 Food				458.00
Total Supplies	\$71.00	\$63.00		\$592.00
800 Other Objects				
810 Dues and Fees				160.00
Total Other Objects				\$160.00
Total 2611 Supervision of Operation and Maintenance of Plant Services – Head of Component	\$71.00	\$63.00		\$181,333.00

General Fund (10)

2619 Supervision of Operation and Maintenance of Plant Services – All Other Supervision

Elementary Secondary Federal Total

100	<u>Personnel Services – Salaries</u>			
	100 Personnel Services – Salaries			70,210.00
Total Personnel Services – Salaries				\$70,210.00
200	<u>Personnel Services – Employee Benefits</u>			
	210 Group Insurance – Contracted Provider			13,657.00
	220 Social Security Contributions			5,191.00
	230 PSERS Retirement Contributions			24,756.00
	250 Unemployment Compensation			58.00
	260 Workers' Compensation			238.00
	299 All Other Employee Benefits			660.00
Total Personnel Services – Employee Benefits				\$44,560.00
500	<u>Other Purchased Services</u>			
	550 Printing and Binding			62.00
	580 Travel			2,956.00
Total Other Purchased Services				\$3,018.00
600	<u>Supplies</u>			
	610 General Supplies	697.00	625.00	1,322.00
Total Supplies		\$697.00	\$625.00	\$1,322.00
800	<u>Other Objects</u>			
	810 Dues and Fees			172.00
Total Other Objects				\$172.00
Total 2619 Supervision of Operation and Maintenance of Plant Services – All Other Supervision		\$697.00	\$625.00	\$119,282.00

General Fund (10)

	<u>Elementary</u>	<u>Secondary</u>	<u>Federal</u>	<u>Total</u>
2620 Operation of Buildings Services				
100 Personnel Services – Salaries				
100 Personnel Services – Salaries				1,772,521.00
Total Personnel Services – Salaries				\$1,772,521.00
200 Personnel Services – Employee Benefits				
210 Group Insurance – Contracted Provider				528,525.00
220 Social Security Contributions				126,179.00
230 PSERS Retirement Contributions				595,795.00
250 Unemployment Compensation				3,013.00
260 Workers' Compensation				5,591.00
280 Other Post-Employment Benefits (OPEB)				10,393.00
299 All Other Employee Benefits				6,360.00
Total Personnel Services – Employee Benefits				\$1,275,856.00
300 Purchased Professional and Technical Services				
330 Other Professional Services				94,426.00
Total Purchased Professional and Technical Services				\$94,426.00
400 Purchased Property Services				
410 Cleaning Services				56,767.00
420 Utility Services				152,444.00
430 Repairs and Maintenance Services				113,894.00
440 Rentals				319.00
460 Extermination Services				12,449.00
Total Purchased Property Services				\$335,873.00
500 Other Purchased Services				
523 General Property and Liability Insurance				171,721.00
530 Communications				47,346.00
580 Travel				970.00
Total Other Purchased Services				\$220,037.00
600 Supplies				
610 General Supplies	229,316.00	192,268.00		421,584.00
620 Energy				1,309,575.00
650 Supplies & Fees – Technology Related				3,000.00
Total Supplies	\$229,316.00	\$192,268.00		\$1,734,159.00
800 Other Objects				
810 Dues and Fees				190.00
Total Other Objects				\$190.00
Total 2620 Operation of Buildings Services	\$229,316.00	\$192,268.00		\$5,433,062.00

General Fund (10)

	<u>Elementary</u>	<u>Secondary</u>	<u>Federal</u>	<u>Total</u>
2630 Care and Upkeep of Grounds Services				
300 <u>Purchased Professional and Technical Services</u>				
329 Professional Educational Services – Other				125.00
Total Purchased Professional and Technical Services				\$125.00
400 <u>Purchased Property Services</u>				
410 Cleaning Services				17,693.00
Total Purchased Property Services				\$17,693.00
600 <u>Supplies</u>				
610 General Supplies	24,470.00	33,128.00		57,598.00
Total Supplies	\$24,470.00	\$33,128.00		\$57,598.00
Total 2630 Care and Upkeep of Grounds Services	\$24,470.00	\$33,128.00		\$75,416.00

LEA : 103021003 Pine-Richland SD

Printed 11/30/2023 8:54:14 AM

General Fund (10)

	<u>Elementary</u>	<u>Secondary</u>	<u>Federal</u>	<u>Total</u>
2640 Care and Upkeep of Equipment Services				
400 <u>Purchased Property Services</u>				
430 Repairs and Maintenance Services				303.00
440 Rentals				291.00
Total Purchased Property Services				\$594.00
Total 2640 Care and Upkeep of Equipment Services				\$594.00

General Fund (10)

	<u>Elementary</u>	<u>Secondary</u>	<u>Federal</u>	<u>Total</u>
2650 Vehicle Operation and Maintenance Services (Other Than Student Transportation Vehicles)				
400 <u>Purchased Property Services</u>				
430 Repairs and Maintenance Services				12,323.00
Total Purchased Property Services				\$12,323.00
500 <u>Other Purchased Services</u>				
522 Automotive Liability Insurance				5,911.00
Total Other Purchased Services				\$5,911.00
600 <u>Supplies</u>				
620 Energy				18,521.00
Total Supplies				\$18,521.00
800 <u>Other Objects</u>				
810 Dues and Fees				500.00
Total Other Objects				\$500.00
Total 2650 Vehicle Operation and Maintenance Services (Other Than Student Transportation Vehicles)				\$37,255.00

LEA : 103021003 Pine-Richland SD

Printed 11/30/2023 8:54:14 AM

General Fund (10)

	<u>Elementary</u>	<u>Secondary</u>	<u>Federal</u>	<u>Total</u>
2660 Safety and Security Services				
100 Personnel Services – Salaries				
100 Personnel Services – Salaries				92,743.00
Total Personnel Services – Salaries				\$92,743.00
200 Personnel Services – Employee Benefits				
210 Group Insurance – Contracted Provider				20,470.00
220 Social Security Contributions				6,885.00
230 PSERS Retirement Contributions				31,820.00
250 Unemployment Compensation				155.00
260 Workers' Compensation				317.00
Total Personnel Services – Employee Benefits				\$59,647.00
300 Purchased Professional and Technical Services				
350 Security / Safety Services				190,974.00
Total Purchased Professional and Technical Services				\$190,974.00
400 Purchased Property Services				
430 Repairs and Maintenance Services				2,125.00
Total Purchased Property Services				\$2,125.00
500 Other Purchased Services				
580 Travel				971.00
Total Other Purchased Services				\$971.00
600 Supplies				
610 General Supplies	4,501.00	4,039.00		8,540.00
650 Supplies & Fees – Technology Related				48,346.00
Total Supplies	\$4,501.00	\$4,039.00		\$56,886.00
700 Property				
762 Capitalized Equipment - Replacement				5,412.00
Total Property				\$5,412.00
800 Other Objects				
810 Dues and Fees				241.00
Total Other Objects				\$241.00
Total 2660 Safety and Security Services	\$4,501.00	\$4,039.00		\$408,999.00

LEA : 103021003 Pine-Richland SD

Printed 11/30/2023 8:54:14 AM

General Fund (10)

	<u>Elementary</u>	<u>Secondary</u>	<u>Federal</u>	<u>Total</u>
2700 Student Transportation Services				
100 Personnel Services – Salaries				
100 Personnel Services – Salaries				50,684.00
Total Personnel Services – Salaries				\$50,684.00
200 Personnel Services – Employee Benefits				
210 Group Insurance – Contracted Provider				7,194.00
220 Social Security Contributions				3,807.00
230 PSERS Retirement Contributions				17,871.00
250 Unemployment Compensation				74.00
260 Workers' Compensation				172.00
299 All Other Employee Benefits				840.00
Total Personnel Services – Employee Benefits				\$29,958.00
300 Purchased Professional and Technical Services				
329 Professional Educational Services – Other				299,998.00
Total Purchased Professional and Technical Services				\$299,998.00
500 Other Purchased Services				
513 Contracted Carriers			96,331.00	5,349,686.00
Total Other Purchased Services			\$96,331.00	\$5,349,686.00
600 Supplies				
610 General Supplies				1,410.00
650 Supplies & Fees – Technology Related				16,720.00
Total Supplies				\$18,130.00
800 Other Objects				
810 Dues and Fees				160.00
Total Other Objects				\$160.00
Total 2700 Student Transportation Services			\$96,331.00	\$5,748,616.00

General Fund (10)

2710 Supervision of Student Transportation Services

Elementary

Secondary

Federal

Total

100 Personnel Services – Salaries

100 Personnel Services – Salaries

50,684.00

Total Personnel Services – Salaries

\$50,684.00

200 Personnel Services – Employee Benefits

210 Group Insurance – Contracted Provider

7,194.00

220 Social Security Contributions

3,807.00

230 PSERS Retirement Contributions

17,871.00

250 Unemployment Compensation

74.00

260 Workers' Compensation

172.00

299 All Other Employee Benefits

840.00

Total Personnel Services – Employee Benefits

\$29,958.00

600 Supplies

610 General Supplies

1,195.00

650 Supplies & Fees – Technology Related

1,295.00

Total Supplies

\$2,490.00

800 Other Objects

810 Dues and Fees

160.00

Total Other Objects

\$160.00

Total 2710 Supervision of Student Transportation Services

\$83,292.00

General Fund (10)

2719 Supervision of Student Transportation Services – All Other Supervision

Elementary

Secondary

Federal

Total

100 Personnel Services – Salaries

100 Personnel Services – Salaries

50,684.00

Total Personnel Services – Salaries

\$50,684.00

200 Personnel Services – Employee Benefits

210 Group Insurance – Contracted Provider

7,194.00

220 Social Security Contributions

3,807.00

230 PSERS Retirement Contributions

17,871.00

250 Unemployment Compensation

74.00

260 Workers' Compensation

172.00

299 All Other Employee Benefits

840.00

Total Personnel Services – Employee Benefits

\$29,958.00

600 Supplies

610 General Supplies

1,195.00

650 Supplies & Fees – Technology Related

1,295.00

Total Supplies

\$2,490.00

800 Other Objects

810 Dues and Fees

160.00

Total Other Objects

\$160.00

Total 2719 Supervision of Student Transportation Services – All Other Supervision

\$83,292.00

LEA : 103021003 Pine-Richland SD

Printed 11/30/2023 8:54:14 AM

General Fund (10)

2720 Vehicle Operation Services

Elementary

Secondary

Federal

Total

500 Other Purchased Services

513 Contracted Carriers

96,331.00

3,570,135.00

Total Other Purchased Services

\$96,331.00

\$3,570,135.00

600 Supplies

610 General Supplies

215.00

650 Supplies & Fees – Technology Related

15,425.00

Total Supplies

\$15,640.00

Total 2720 Vehicle Operation Services

\$96,331.00

\$3,585,775.00

General Fund (10)

2730 Monitoring Services

Elementary

Secondary

Federal

Total

300 Purchased Professional and Technical Services

329 Professional Educational Services – Other

299,998.00

Total Purchased Professional and Technical Services

\$299,998.00

Total 2730 Monitoring Services

\$299,998.00

General Fund (10)

2740 Vehicle Servicing and Maintenance Services

Elementary

Secondary

Federal

Total

500 Other Purchased Services

513 Contracted Carriers

339,323.00

Total Other Purchased Services

\$339,323.00

Total 2740 Vehicle Servicing and Maintenance Services

\$339,323.00

LEA : 103021003 Pine-Richland SD

Printed 11/30/2023 8:54:14 AM

General Fund (10)

2750 Nonpublic Transportation

Elementary

Secondary

Federal

Total

500 Other Purchased Services

513 Contracted Carriers

1,440,228.00

Total Other Purchased Services

\$1,440,228.00

Total 2750 Nonpublic Transportation

\$1,440,228.00

LEA : 103021003 Pine-Richland SD

Printed 11/30/2023 8:54:14 AM

General Fund (10)

2800 Support Services – Central

Elementary Secondary Federal Total

100	<u>Personnel Services – Salaries</u>			
	100 Personnel Services – Salaries			581,498.00
Total Personnel Services – Salaries				\$581,498.00
200	<u>Personnel Services – Employee Benefits</u>			
	210 Group Insurance – Contracted Provider			103,300.00
	220 Social Security Contributions			43,915.00
	230 PSERS Retirement Contributions			205,037.00
	240 Tuition Reimbursement			19,803.00
	250 Unemployment Compensation			1,785.00
	260 Workers' Compensation			1,941.00
	299 All Other Employee Benefits			3,245.00
Total Personnel Services – Employee Benefits				\$379,026.00
300	<u>Purchased Professional and Technical Services</u>			
	329 Professional Educational Services – Other			286,815.00
	330 Other Professional Services			4,000.00
	360 Employee Training and Development Services		735.00	18,742.00
	390 Other Purchased Professional and Technical Services			4,005.00
Total Purchased Professional and Technical Services				\$735.00 \$313,562.00
400	<u>Purchased Property Services</u>			
	430 Repairs and Maintenance Services			1,248.00
Total Purchased Property Services				\$1,248.00
500	<u>Other Purchased Services</u>			
	520 Insurance – General			70,385.00
	530 Communications			74,339.00
	549 Other Advertising/Public Relations			2,390.00
	580 Travel			5,209.00
Total Other Purchased Services				\$152,323.00
600	<u>Supplies</u>			
	610 General Supplies			3,452.00
	630 Food			709.00
	640 Books and Periodicals			277.00
	650 Supplies & Fees – Technology Related			956,079.00
Total Supplies				\$960,517.00
800	<u>Other Objects</u>			
	810 Dues and Fees			1,339.00
Total Other Objects				\$1,339.00
Total 2800 Support Services – Central			\$735.00	\$2,389,513.00

General Fund (10)

2810 Planning, Research, Development and Evaluation Services	<u>Elementary</u>	<u>Secondary</u>	<u>Federal</u>	<u>Total</u>
100 Personnel Services – Salaries				
100 Personnel Services – Salaries				360,762.00
Total Personnel Services – Salaries				\$360,762.00
200 Personnel Services – Employee Benefits				
210 Group Insurance – Contracted Provider				60,442.00
220 Social Security Contributions				27,013.00
230 PSERS Retirement Contributions				127,205.00
250 Unemployment Compensation				1,610.00
260 Workers' Compensation				1,191.00
299 All Other Employee Benefits				2,585.00
Total Personnel Services – Employee Benefits				\$220,046.00
300 Purchased Professional and Technical Services				
329 Professional Educational Services – Other				283,541.00
Total Purchased Professional and Technical Services				\$283,541.00
400 Purchased Property Services				
430 Repairs and Maintenance Services				1,248.00
Total Purchased Property Services				\$1,248.00
500 Other Purchased Services				
520 Insurance – General				21,076.00
530 Communications				74,339.00
Total Other Purchased Services				\$95,415.00
600 Supplies				
610 General Supplies				1,311.00
650 Supplies & Fees – Technology Related				916,563.00
Total Supplies				\$917,874.00
800 Other Objects				
810 Dues and Fees				120.00
Total Other Objects				\$120.00
Total 2810 Planning, Research, Development and Evaluation Services				\$1,879,006.00

General Fund (10)

2830 Staff Services

Elementary Secondary Federal Total

100	<u>Personnel Services – Salaries</u>			
	100 Personnel Services – Salaries			220,736.00
Total Personnel Services – Salaries				\$220,736.00
200	<u>Personnel Services – Employee Benefits</u>			
	210 Group Insurance – Contracted Provider			42,858.00
	220 Social Security Contributions			16,902.00
	230 PSERS Retirement Contributions			77,832.00
	240 Tuition Reimbursement			19,803.00
	250 Unemployment Compensation			175.00
	260 Workers' Compensation			750.00
	299 All Other Employee Benefits			660.00
Total Personnel Services – Employee Benefits				\$158,980.00
300	<u>Purchased Professional and Technical Services</u>			
	329 Professional Educational Services – Other			3,274.00
	330 Other Professional Services			4,000.00
	360 Employee Training and Development Services		735.00	18,742.00
	390 Other Purchased Professional and Technical Services			4,005.00
Total Purchased Professional and Technical Services				\$735.00 \$30,021.00
500	<u>Other Purchased Services</u>			
	520 Insurance – General			49,309.00
	549 Other Advertising/Public Relations			2,390.00
	580 Travel			5,209.00
Total Other Purchased Services				\$56,908.00
600	<u>Supplies</u>			
	610 General Supplies			2,141.00
	630 Food			709.00
	640 Books and Periodicals			277.00
	650 Supplies & Fees – Technology Related			39,516.00
Total Supplies				\$42,643.00
800	<u>Other Objects</u>			
	810 Dues and Fees			1,219.00
Total Other Objects				\$1,219.00
Total 2830 Staff Services				\$735.00 \$510,507.00

General Fund (10)

2831 Supervision of Staff Services

Elementary

Secondary

Federal

Total

100 Personnel Services – Salaries

100 Personnel Services – Salaries

164,361.00

Total Personnel Services – Salaries

\$164,361.00

200 Personnel Services – Employee Benefits

210 Group Insurance – Contracted Provider

33,205.00

220 Social Security Contributions

12,261.00

230 PSERS Retirement Contributions

57,954.00

250 Unemployment Compensation

117.00

260 Workers' Compensation

557.00

299 All Other Employee Benefits

660.00

Total Personnel Services – Employee Benefits

\$104,754.00

300 Purchased Professional and Technical Services

330 Other Professional Services

4,000.00

Total Purchased Professional and Technical Services

\$4,000.00

500 Other Purchased Services

580 Travel

20.00

Total Other Purchased Services

\$20.00

600 Supplies

610 General Supplies

320.00

630 Food

449.00

650 Supplies & Fees – Technology Related

15,929.00

Total Supplies

\$16,698.00

800 Other Objects

810 Dues and Fees

539.00

Total Other Objects

\$539.00

Total 2831 Supervision of Staff Services

\$290,372.00

General Fund (10)

2832 Recruitment and Placement Services

Elementary

Secondary

Federal

Total

300 Purchased Professional and Technical Services

390 Other Purchased Professional and Technical Services

4,005.00

Total Purchased Professional and Technical Services

\$4,005.00

500 Other Purchased Services

549 Other Advertising/Public Relations

2,390.00

Total Other Purchased Services

\$2,390.00

600 Supplies

610 General Supplies

399.00

630 Food

162.00

650 Supplies & Fees – Technology Related

14,756.00

Total Supplies

\$15,317.00

800 Other Objects

810 Dues and Fees

520.00

Total Other Objects

\$520.00

Total 2832 Recruitment and Placement Services

\$22,232.00

General Fund (10)

2833 Staff Accounting Services

Elementary

Secondary

Federal

Total

100 Personnel Services – Salaries

100 Personnel Services – Salaries

56,375.00

Total Personnel Services – Salaries

\$56,375.00

200 Personnel Services – Employee Benefits

210 Group Insurance – Contracted Provider

8,518.00

220 Social Security Contributions

4,230.00

230 PSERS Retirement Contributions

19,878.00

250 Unemployment Compensation

58.00

260 Workers' Compensation

193.00

Total Personnel Services – Employee Benefits

\$32,877.00

600 Supplies

610 General Supplies

1,318.00

Total Supplies

\$1,318.00

Total 2833 Staff Accounting Services

\$90,570.00

General Fund (10)

2834 Staff Development Services – Non-Instructional, Certified Staff Only

	<u>Elementary</u>	<u>Secondary</u>	<u>Federal</u>	<u>Total</u>
200 Personnel Services – Employee Benefits				
210 Group Insurance – Contracted Provider				1,135.00
220 Social Security Contributions				411.00
240 Tuition Reimbursement				19,803.00
Total Personnel Services – Employee Benefits				\$21,349.00
300 Purchased Professional and Technical Services				
360 Employee Training and Development Services			735.00	7,880.00
Total Purchased Professional and Technical Services			\$735.00	\$7,880.00
500 Other Purchased Services				
580 Travel				2,966.00
Total Other Purchased Services				\$2,966.00
600 Supplies				
630 Food				98.00
640 Books and Periodicals				277.00
Total Supplies				\$375.00
Total 2834 Staff Development Services – Non-Instructional, Certified Staff Only			\$735.00	\$32,570.00

General Fund (10)

	<u>Elementary</u>	<u>Secondary</u>	<u>Federal</u>	<u>Total</u>
2836 Staff Development Services – Non-Instructional, Non-Certified Staff Only				
300 <u>Purchased Professional and Technical Services</u>				
360 Employee Training and Development Services				10,862.00
Total Purchased Professional and Technical Services				\$10,862.00
500 <u>Other Purchased Services</u>				
580 Travel				2,223.00
Total Other Purchased Services				\$2,223.00
Total 2836 Staff Development Services – Non-Instructional, Non-Certified Staff Only				\$13,085.00

LEA : 103021003 Pine-Richland SD

Printed 11/30/2023 8:54:14 AM

General Fund (10)

2839 Other Staff Services

Elementary

Secondary

Federal

Total

300 Purchased Professional and Technical Services

329 Professional Educational Services – Other

3,274.00

Total Purchased Professional and Technical Services

\$3,274.00

500 Other Purchased Services

520 Insurance – General

49,309.00

Total Other Purchased Services

\$49,309.00

600 Supplies

610 General Supplies

104.00

650 Supplies & Fees – Technology Related

8,831.00

Total Supplies

\$8,935.00

800 Other Objects

810 Dues and Fees

160.00

Total Other Objects

\$160.00

Total 2839 Other Staff Services

\$61,678.00

LEA : 103021003 Pine-Richland SD

Printed 11/30/2023 8:54:14 AM

General Fund (10)

2900 Other Support Services

Elementary

Secondary

Federal

Total

500 Other Purchased Services

595 IU Payments By Withholding

86,896.00

Total Other Purchased Services

\$86,896.00

Total 2900 Other Support Services

\$86,896.00

LEA : 103021003 Pine-Richland SD

Printed 11/30/2023 8:54:14 AM

General Fund (10)

2910 Support Services Not Listed Elsewhere In the 2000 Series

Elementary

Secondary

Federal

Total

500 Other Purchased Services

595 IU Payments By Withholding

86,896.00

Total Other Purchased Services

\$86,896.00

Total 2910 Support Services Not Listed Elsewhere In the 2000 Series

\$86,896.00

LEA : 103021003 Pine-Richland SD

Printed 11/30/2023 8:54:22 AM

General Fund (10)

	<u>Total</u>
3000 Operation of Non-Instructional Services	
100 Personnel Services – Salaries	
100 Personnel Services – Salaries	1,042,063.00
Total Personnel Services – Salaries	\$1,042,063.00
200 Personnel Services – Employee Benefits	
210 Group Insurance – Contracted Provider	110,741.00
220 Social Security Contributions	78,574.00
230 PSERS Retirement Contributions	349,580.00
250 Unemployment Compensation	4,416.00
260 Workers' Compensation	3,692.00
299 All Other Employee Benefits	3,630.00
Total Personnel Services – Employee Benefits	\$550,633.00
300 Purchased Professional and Technical Services	
329 Professional Educational Services – Other	71,263.00
330 Other Professional Services	42,136.00
350 Security / Safety Services	21,185.00
Total Purchased Professional and Technical Services	\$134,584.00
400 Purchased Property Services	
410 Cleaning Services	5,799.00
430 Repairs and Maintenance Services	11,655.00
440 Rentals	21,425.00
Total Purchased Property Services	\$38,879.00
500 Other Purchased Services	
510 Student Transportation Services	136,732.00
520 Insurance – General	12,725.00
530 Communications	59.00
550 Printing and Binding	1,929.00
580 Travel	57,737.00
Total Other Purchased Services	\$209,182.00
600 Supplies	
610 General Supplies	197,456.00
630 Food	2,494.00
650 Supplies & Fees – Technology Related	28,823.00
Total Supplies	\$228,773.00
700 Property	
752 Capital Equipment – Original and Additional	31,725.00
762 Capitalized Equipment - Replacement	5,565.00
Total Property	\$37,290.00
800 Other Objects	
810 Dues and Fees	38,793.00
860 Grants To Municipal and Community Service Organizations	38,500.00
880 Refunds of Prior Years' Receipts	32,450.00

LEA : 103021003 Pine-Richland SD

Printed 11/30/2023 8:54:22 AM

General Fund (10)

3000 Operation of Non-Instructional Services

	<u>Total</u>
Total Other Objects	\$109,743.00
Total 3000 Operation of Non-Instructional Services	\$2,351,147.00

LEA : 103021003 Pine-Richland SD

Printed 11/30/2023 8:54:22 AM

General Fund (10)

3200 Student Activities

Elementary Secondary Federal Total

100	<u>Personnel Services – Salaries</u>				
	100 Personnel Services – Salaries				1,042,063.00
Total Personnel Services – Salaries					\$1,042,063.00
200	<u>Personnel Services – Employee Benefits</u>				
	210 Group Insurance – Contracted Provider				110,741.00
	220 Social Security Contributions				78,574.00
	230 PSERS Retirement Contributions				349,580.00
	250 Unemployment Compensation				4,416.00
	260 Workers' Compensation				3,692.00
	299 All Other Employee Benefits				3,630.00
Total Personnel Services – Employee Benefits					\$550,633.00
300	<u>Purchased Professional and Technical Services</u>				
	329 Professional Educational Services – Other				71,263.00
	330 Other Professional Services				42,136.00
	350 Security / Safety Services				21,185.00
Total Purchased Professional and Technical Services					\$134,584.00
400	<u>Purchased Property Services</u>				
	410 Cleaning Services				5,799.00
	430 Repairs and Maintenance Services				11,655.00
	440 Rentals				21,425.00
Total Purchased Property Services					\$38,879.00
500	<u>Other Purchased Services</u>				
	510 Student Transportation Services				136,732.00
	520 Insurance – General				12,725.00
	530 Communications				59.00
	550 Printing and Binding				1,929.00
	580 Travel				57,737.00
Total Other Purchased Services					\$209,182.00
600	<u>Supplies</u>				
	610 General Supplies				197,456.00
	630 Food				2,494.00
	650 Supplies & Fees – Technology Related				28,823.00
Total Supplies					\$228,773.00
700	<u>Property</u>				
	752 Capital Equipment – Original and Additional				31,725.00
	762 Capitalized Equipment - Replacement				5,565.00
Total Property					\$37,290.00
800	<u>Other Objects</u>				
	810 Dues and Fees				38,793.00
Total Other Objects					\$38,793.00
Total 3200 Student Activities					\$2,280,197.00

LEA : 103021003 Pine-Richland SD

Printed 11/30/2023 8:54:22 AM

General Fund (10)

3300 Community Services

Elementary

Secondary

Federal

Total

800 Other Objects

860 Grants To Municipal and Community Service Organizations

38,500.00

880 Refunds of Prior Years' Receipts

32,450.00

Total Other Objects

\$70,950.00

Total 3300 Community Services

\$70,950.00

General Fund (10)

4000 Facilities Acquisition, Construction and Improvement Services

Total

400 Purchased Property Services

450 Construction Services

2,069,666.00

Total Purchased Property Services

\$2,069,666.00

Total 4000 Facilities Acquisition, Construction and Improvement Services

\$2,069,666.00

LEA : 103021003 Pine-Richland SD

Printed 11/30/2023 8:54:28 AM

General Fund (10)

	<u>Elementary</u>	<u>Secondary</u>	<u>Federal</u>	<u>Total</u>
4600 Existing Building Improvement Services				
400 <u>Purchased Property Services</u>				
450 Construction Services			818,126.00	2,069,666.00
Total Purchased Property Services			\$818,126.00	\$2,069,666.00
Total 4600 Existing Building Improvement Services			\$818,126.00	\$2,069,666.00

General Fund (10)

5000 Other Expenditures and Financing Uses

Total

800 Other Objects

830 Interest	2,961,954.00
880 Refunds of Prior Years' Receipts	286,870.00

Total Other Objects	\$3,248,824.00
----------------------------	-----------------------

900 Other Uses of Funds

910 Redemption of Principal	6,059,041.00
932 Capital Reserve Fund Transfers Applicable To Fund 32	7,379,221.00

Total Other Uses of Funds	\$13,438,262.00
----------------------------------	------------------------

Total 5000 Other Expenditures and Financing Uses	\$16,687,086.00
---	------------------------

LEA : 103021003 Pine-Richland SD

Printed 11/30/2023 8:54:36 AM

General Fund (10)

5100 Debt Service / Other Expenditures and Financing Uses	<u>Elementary</u>	<u>Secondary</u>	<u>Federal</u>	<u>Total</u>
800 Other Objects				
830 Interest				2,961,954.00
880 Refunds of Prior Years' Receipts				286,870.00
Total Other Objects				\$3,248,824.00
900 Other Uses of Funds				
910 Redemption of Principal				6,059,041.00
Total Other Uses of Funds				\$6,059,041.00
Total 5100 Debt Service / Other Expenditures and Financing Uses				\$9,307,865.00

LEA : 103021003 Pine-Richland SD

Printed 11/30/2023 8:54:36 AM

General Fund (10)

	<u>Elementary</u>	<u>Secondary</u>	<u>Federal</u>	<u>Total</u>
5110 Debt Service				
800 Other Objects				
830 Interest				2,948,275.00
Total Other Objects				\$2,948,275.00
900 Other Uses of Funds				
910 Redemption of Principal				5,775,000.00
Total Other Uses of Funds				\$5,775,000.00
Total 5110 Debt Service				\$8,723,275.00

LEA : 103021003 Pine-Richland SD

Printed 11/30/2023 8:54:36 AM

General Fund (10)

5130 Refund of Prior Year Revenues / Receipts	<u>Elementary</u>	<u>Secondary</u>	<u>Federal</u>	<u>Total</u>
800 <u>Other Objects</u>				
880 Refunds of Prior Years' Receipts				286,870.00
Total Other Objects				\$286,870.00
Total 5130 Refund of Prior Year Revenues / Receipts				\$286,870.00

LEA : 103021003 Pine-Richland SD

Printed 11/30/2023 8:54:36 AM

General Fund (10)

	<u>Elementary</u>	<u>Secondary</u>	<u>Federal</u>	<u>Total</u>
5140 Leases and Other Right-to-Use Arrangements				
800 Other Objects				
830 Interest				13,679.00
Total Other Objects				\$13,679.00
900 Other Uses of Funds				
910 Redemption of Principal				284,041.00
Total Other Uses of Funds				\$284,041.00
Total 5140 Leases and Other Right-to-Use Arrangements				\$297,720.00

LEA : 103021003 Pine-Richland SD

Printed 11/30/2023 8:54:36 AM

General Fund (10)

	<u>Elementary</u>	<u>Secondary</u>	<u>Federal</u>	<u>Total</u>
5200 Interfund Transfers – Out				
900 Other Uses of Funds				
932 Capital Reserve Fund Transfers Applicable To Fund 32				7,379,221.00
Total Other Uses of Funds				\$7,379,221.00
Total 5200 Interfund Transfers – Out				\$7,379,221.00

LEA : 103021003 Pine-Richland SD

Printed 11/30/2023 8:54:36 AM

General Fund (10)

5230 Capital Projects Fund Transfers

Elementary

Secondary

Federal

Total

900 Other Uses of Funds

932 Capital Reserve Fund Transfers Applicable To Fund 32

7,379,221.00

Total Other Uses of Funds

\$7,379,221.00

Total 5230 Capital Projects Fund Transfers

\$7,379,221.00

Capital Reserve Fund - § 1431 (32)

2000 Support Services

300 Purchased Professional and Technical Services

330 Other Professional Services 4,716.00

Total Purchased Professional and Technical Services \$4,716.00

400 Purchased Property Services

410 Cleaning Services 13,615.00

430 Repairs and Maintenance Services 48,834.00

Total Purchased Property Services \$62,449.00

600 Supplies

610 General Supplies 250,008.00

650 Supplies & Fees – Technology Related 64,212.00

Total Supplies \$314,220.00

700 Property

752 Capital Equipment – Original and Additional 9,927.00

762 Capitalized Equipment - Replacement 17,600.00

766 Capitalized Technology Equipment – Replacement 9,620.00

768 Capitalized Technology Software - Replacement 131,236.00

Total Property \$168,383.00

Total 2000 Support Services \$549,768.00

LEA : 103021003 Pine-Richland SD

Printed 11/30/2023 8:54:18 AM

Capital Reserve Fund - § 1431 (32)

2200 Support Services – Instructional Staff

	<u>Elementary</u>	<u>Secondary</u>	<u>Federal</u>	<u>Total</u>
600 <u>Supplies</u>				
610 General Supplies	162,898.00	22,572.00		185,470.00
Total Supplies	\$162,898.00	\$22,572.00		\$185,470.00
Total 2200 Support Services – Instructional Staff	\$162,898.00	\$22,572.00		\$185,470.00

LEA : 103021003 Pine-Richland SD

Printed 11/30/2023 8:54:18 AM

Capital Reserve Fund - § 1431 (32)

2220 Technology Support Services

600 Supplies
610 General Supplies

	<u>Elementary</u>	<u>Secondary</u>	<u>Federal</u>	<u>Total</u>
		2,050.00		2,050.00
Total Supplies		\$2,050.00		\$2,050.00
Total 2220 Technology Support Services		\$2,050.00		\$2,050.00

LEA : 103021003 Pine-Richland SD

Printed 11/30/2023 8:54:18 AM

Capital Reserve Fund - § 1431 (32)

2250 School Library Services

600 Supplies
610 General Supplies

	<u>Elementary</u>	<u>Secondary</u>	<u>Federal</u>	<u>Total</u>
	162,898.00	20,522.00		183,420.00
Total Supplies	\$162,898.00	\$20,522.00		\$183,420.00
Total 2250 School Library Services	\$162,898.00	\$20,522.00		\$183,420.00

LEA : 103021003 Pine-Richland SD

Printed 11/30/2023 8:54:18 AM

Capital Reserve Fund - § 1431 (32)

2600 Operation and Maintenance of Plant Services

Elementary

Secondary

Federal

Total

400 Purchased Property Services

410 Cleaning Services

13,615.00

430 Repairs and Maintenance Services

48,834.00

Total Purchased Property Services

\$62,449.00

600 Supplies

610 General Supplies

32,269.00

32,269.00

64,538.00

650 Supplies & Fees – Technology Related

18,780.00

Total Supplies

\$32,269.00

\$32,269.00

\$83,318.00

700 Property

752 Capital Equipment – Original and Additional

9,927.00

762 Capitalized Equipment - Replacement

17,600.00

Total Property

\$27,527.00

Total 2600 Operation and Maintenance of Plant Services

\$32,269.00

\$32,269.00

\$173,294.00

LEA : 103021003 Pine-Richland SD

Printed 11/30/2023 8:54:18 AM

Capital Reserve Fund - § 1431 (32)

2620 Operation of Buildings Services

400 Purchased Property Services

430 Repairs and Maintenance Services

Total Purchased Property Services

600 Supplies

610 General Supplies

Total Supplies

700 Property

762 Capitalized Equipment - Replacement

Total Property

Total 2620 Operation of Buildings Services

Elementary

Secondary

Federal

Total

42,324.00

\$42,324.00

64,538.00

\$64,538.00

17,600.00

\$17,600.00

\$124,462.00

32,269.00

\$32,269.00

32,269.00

\$32,269.00

LEA : 103021003 Pine-Richland SD

Printed 11/30/2023 8:54:18 AM

Capital Reserve Fund - § 1431 (32)

2630 Care and Upkeep of Grounds Services

Elementary

Secondary

Federal

Total

400 Purchased Property Services

410 Cleaning Services

13,615.00

Total Purchased Property Services

\$13,615.00

Total 2630 Care and Upkeep of Grounds Services

\$13,615.00

LEA : 103021003 Pine-Richland SD

Printed 11/30/2023 8:54:18 AM

Capital Reserve Fund - § 1431 (32)

2650 Vehicle Operation and Maintenance Services (Other Than Student Transportation Vehicles)

Elementary

Secondary

Federal

Total

700 Property

752 Capital Equipment – Original and Additional

9,927.00

Total Property

\$9,927.00

Total 2650 Vehicle Operation and Maintenance Services (Other Than Student Transportation Vehicles)

\$9,927.00

LEA : 103021003 Pine-Richland SD

Printed 11/30/2023 8:54:18 AM

Capital Reserve Fund - § 1431 (32)

2660 Safety and Security Services

Elementary

Secondary

Federal

Total

400 Purchased Property Services

430 Repairs and Maintenance Services

6,510.00

Total Purchased Property Services

\$6,510.00

600 Supplies

650 Supplies & Fees – Technology Related

18,780.00

Total Supplies

\$18,780.00

Total 2660 Safety and Security Services

\$25,290.00

LEA : 103021003 Pine-Richland SD

Printed 11/30/2023 8:54:18 AM

Capital Reserve Fund - § 1431 (32)

2800 Support Services – Central

Elementary

Secondary

Federal

Total

300 Purchased Professional and Technical Services

330 Other Professional Services

4,716.00

Total Purchased Professional and Technical Services

\$4,716.00

600 Supplies

650 Supplies & Fees – Technology Related

45,432.00

Total Supplies

\$45,432.00

700 Property

766 Capitalized Technology Equipment – Replacement

9,620.00

768 Capitalized Technology Software - Replacement

131,236.00

Total Property

\$140,856.00

Total 2800 Support Services – Central

\$191,004.00

LEA : 103021003 Pine-Richland SD

Printed 11/30/2023 8:54:18 AM

Capital Reserve Fund - § 1431 (32)

2810 Planning, Research, Development and Evaluation Services

Elementary

Secondary

Federal

Total

300 Purchased Professional and Technical Services

330 Other Professional Services

4,716.00

Total Purchased Professional and Technical Services

\$4,716.00

600 Supplies

650 Supplies & Fees – Technology Related

45,432.00

Total Supplies

\$45,432.00

700 Property

766 Capitalized Technology Equipment – Replacement

9,620.00

768 Capitalized Technology Software - Replacement

131,236.00

Total Property

\$140,856.00

Total 2810 Planning, Research, Development and Evaluation Services

\$191,004.00

LEA : 103021003 Pine-Richland SD

Printed 11/30/2023 8:54:24 AM

Capital Reserve Fund - § 1431 (32)

3000 Operation of Non-Instructional Services

Total

600 Supplies

610 General Supplies

4,249.00

Total Supplies

\$4,249.00

700 Property

762 Capitalized Equipment - Replacement

6,195.00

Total Property

\$6,195.00

Total 3000 Operation of Non-Instructional Services

\$10,444.00

LEA : 103021003 Pine-Richland SD

Printed 11/30/2023 8:54:24 AM

Capital Reserve Fund - § 1431 (32)

3200 Student Activities

Elementary

Secondary

Federal

Total

600 Supplies

610 General Supplies

4,249.00

Total Supplies

\$4,249.00

700 Property

762 Capitalized Equipment - Replacement

6,195.00

Total Property

\$6,195.00

Total 3200 Student Activities

\$10,444.00

Capital Reserve Fund - § 1431 (32)

4000 Facilities Acquisition, Construction and Improvement Services

Total

300 Purchased Professional and Technical Services

330 Other Professional Services 678,637.00

Total Purchased Professional and Technical Services \$678,637.00

400 Purchased Property Services

430 Repairs and Maintenance Services 683,097.00

450 Construction Services 3,968,613.00

Total Purchased Property Services \$4,651,710.00

500 Other Purchased Services

520 Insurance – General 14,531.00

Total Other Purchased Services \$14,531.00

600 Supplies

610 General Supplies 332,798.00

Total Supplies \$332,798.00

700 Property

752 Capital Equipment – Original and Additional 16,525.00

Total Property \$16,525.00

Total 4000 Facilities Acquisition, Construction and Improvement Services \$5,694,201.00

LEA : 103021003 Pine-Richland SD

Printed 11/30/2023 8:54:34 AM

Capital Reserve Fund - § 1431 (32)

4200 Existing Site Improvement Services

Elementary

Secondary

Federal

Total

300 Purchased Professional and Technical Services

330 Other Professional Services

7,950.00

Total Purchased Professional and Technical Services

\$7,950.00

400 Purchased Property Services

450 Construction Services

780,413.00

Total Purchased Property Services

\$780,413.00

600 Supplies

610 General Supplies

21,965.00

Total Supplies

\$21,965.00

700 Property

752 Capital Equipment – Original and Additional

16,525.00

Total Property

\$16,525.00

Total 4200 Existing Site Improvement Services

\$826,853.00

LEA : 103021003 Pine-Richland SD

Printed 11/30/2023 8:54:34 AM

Capital Reserve Fund - § 1431 (32)

4400 Architecture and Engineering Services / Educational Specifications – Improvements

Elementary

Secondary

Federal

Total

300 Purchased Professional and Technical Services

330 Other Professional Services

642,327.00

Total Purchased Professional and Technical Services

\$642,327.00

Total 4400 Architecture and Engineering Services / Educational Specifications – Improvements

\$642,327.00

LEA : 103021003 Pine-Richland SD

Printed 11/30/2023 8:54:34 AM

Capital Reserve Fund - § 1431 (32)

4600 Existing Building Improvement Services

Elementary

Secondary

Federal

Total

300 Purchased Professional and Technical Services

330 Other Professional Services

28,360.00

Total Purchased Professional and Technical Services

\$28,360.00

400 Purchased Property Services

430 Repairs and Maintenance Services

683,097.00

450 Construction Services

3,188,200.00

Total Purchased Property Services

\$3,871,297.00

500 Other Purchased Services

520 Insurance – General

14,531.00

Total Other Purchased Services

\$14,531.00

600 Supplies

610 General Supplies

310,833.00

Total Supplies

\$310,833.00

Total 4600 Existing Building Improvement Services

\$4,225,021.00

LEA : 103021003 Pine-Richland SD

Printed 11/30/2023 8:54:20 AM

Other Capital Projects Fund (39)

2000 Support Services

300 Purchased Professional and Technical Services

330 Other Professional Services	62,000.00
Total Purchased Professional and Technical Services	\$62,000.00
Total 2000 Support Services	\$62,000.00

LEA : 103021003 Pine-Richland SD

Printed 11/30/2023 8:54:20 AM

Other Capital Projects Fund (39)

2300 Support Services – Administration

Elementary

Secondary

Federal

Total

300 Purchased Professional and Technical Services

330 Other Professional Services

62,000.00

Total Purchased Professional and Technical Services

\$62,000.00

Total 2300 Support Services – Administration

\$62,000.00

LEA : 103021003 Pine-Richland SD

Printed 11/30/2023 8:54:20 AM

Other Capital Projects Fund (39)

2350 Legal and Accounting Services

Elementary

Secondary

Federal

Total

300 Purchased Professional and Technical Services

330 Other Professional Services

62,000.00

Total Purchased Professional and Technical Services

\$62,000.00

Total 2350 Legal and Accounting Services

\$62,000.00

Other Capital Projects Fund (39)

5000 Other Expenditures and Financing Uses

Total

900 Other Uses of Funds

939 Other Fund Transfers

1,668,455.00

990 Miscellaneous Other Uses of Funds

1,209,654.00

Total Other Uses of Funds	\$2,878,109.00
Total 5000 Other Expenditures and Financing Uses	\$2,878,109.00

LEA : 103021003 Pine-Richland SD

Printed 11/30/2023 8:54:38 AM

Other Capital Projects Fund (39)

5100 Debt Service / Other Expenditures and Financing Uses

Elementary

Secondary

Federal

Total

900 Other Uses of Funds

990 Miscellaneous Other Uses of Funds

1,209,654.00

Total Other Uses of Funds

\$1,209,654.00

Total 5100 Debt Service / Other Expenditures and Financing Uses

\$1,209,654.00

LEA : 103021003 Pine-Richland SD

Printed 11/30/2023 8:54:38 AM

Other Capital Projects Fund (39)

5110 Debt Service

Elementary

Secondary

Federal

Total

900 Other Uses of Funds

990 Miscellaneous Other Uses of Funds

1,209,654.00

Total Other Uses of Funds

\$1,209,654.00

Total 5110 Debt Service

\$1,209,654.00

LEA : 103021003 Pine-Richland SD

Printed 11/30/2023 8:54:38 AM

Other Capital Projects Fund (39)

5200 Interfund Transfers – Out

Elementary

Secondary

Federal

Total

900 Other Uses of Funds

939 Other Fund Transfers

1,668,455.00

Total Other Uses of Funds

\$1,668,455.00

Total 5200 Interfund Transfers – Out

\$1,668,455.00

LEA : 103021003 Pine-Richland SD

Printed 11/30/2023 8:54:38 AM

Other Capital Projects Fund (39)

5210 General Fund Transfers

Elementary

Secondary

Federal

Total

900 Other Uses of Funds

939 Other Fund Transfers

1,668,455.00

Total Other Uses of Funds

\$1,668,455.00

Total 5210 General Fund Transfers

\$1,668,455.00

	<u>General Fund(10)</u>	<u>Student Sponsored Activity Fund(21)</u>	<u>Public Purpose Trust(27)</u>	<u>Other Compt Approved (28)</u>	<u>Athletic / Activity(29)</u>
1000 Instruction					
1100 Regular Programs - Elementary / Secondary	41,531,401.00				
1200 Special Programs - Elementary / Secondary	13,128,640.00				
1300 Vocational Education	687,133.00				
1400 Other Instructional Programs - Elementary / Secondary	13,936.00				
1500 Nonpublic School Programs	14,970.00				
Total Instruction	\$55,376,080.00				
2000 Support Services					
2100 Support Services - Students	3,338,603.00				
2200 Support Services - Instructional Staff	1,728,646.00				
2300 Support Services - Administration	4,803,783.00				
2400 Support Services - Pupil Health	1,090,597.00				
2500 Support Services - Business	686,864.00				
2600 Operation and Maintenance of Plant Services	6,255,941.00				
2700 Student Transportation Services	5,748,616.00				
2800 Support Services - Central	2,389,513.00				
2900 Other Support Services	86,896.00				
Total Support Services	\$26,129,459.00				
3000 Operation of Non-Instructional Services					
3200 Student Activities	2,280,197.00				
3300 Community Services	70,950.00				
Total Operation of Non-Instructional Services	\$2,351,147.00				
4000 Facilities Acquisition, Construction and Improvement Services					
4200 Existing Site Improvement Services					
4400 Architecture and Engineering Services / Educational Specifications - Improvements					
4600 Existing Building Improvement Services	2,069,666.00				
Total Facilities Acquisition, Construction and Improvement Services	\$2,069,666.00				
5000 Other Expenditures and Financing Uses					
5100 Debt Service / Other Expenditures and Financing Uses	9,307,865.00				
5200 Interfund Transfers - Out	7,379,221.00				
Total Other Expenditures and Financing Uses	\$16,687,086.00				
TOTAL ACTUAL EXPENDITURES & OTHER FINANCING USES	\$102,613,438.00				

	<u>Capital Reserve (690.1850)(31)</u>	<u>Capital Reserve (1431)(32)</u>	<u>Other Capital Projects Fund(39)</u>	<u>Debt Service(40)</u>	<u>Permanent(90)</u>
1000 Instruction					
1100 Regular Programs - Elementary / Secondary					
1200 Special Programs - Elementary / Secondary					
1300 Vocational Education					
1400 Other Instructional Programs - Elementary / Secondary					
1500 Nonpublic School Programs					
Total Instruction					
2000 Support Services					
2100 Support Services - Students					
2200 Support Services - Instructional Staff		185,470.00			
2300 Support Services - Administration			62,000.00		
2400 Support Services - Pupil Health					
2500 Support Services - Business					
2600 Operation and Maintenance of Plant Services		173,294.00			
2700 Student Transportation Services					
2800 Support Services - Central		191,004.00			
2900 Other Support Services					
Total Support Services		\$549,768.00	\$62,000.00		
3000 Operation of Non-Instructional Services					
3200 Student Activities		10,444.00			
3300 Community Services					
Total Operation of Non-Instructional Services		\$10,444.00			
4000 Facilities Acquisition, Construction and Improvement Services					
4200 Existing Site Improvement Services		826,853.00			
4400 Architecture and Engineering Services / Educational Specifications - Improvements		642,327.00			
4600 Existing Building Improvement Services		4,225,021.00			
Total Facilities Acquisition, Construction and Improvement Services		\$5,694,201.00			
5000 Other Expenditures and Financing Uses					
5100 Debt Service / Other Expenditures and Financing Uses			1,209,654.00		
5200 Interfund Transfers - Out			1,668,455.00		
Total Other Expenditures and Financing Uses			\$2,878,109.00		
TOTAL ACTUAL EXPENDITURES & OTHER FINANCING USES		\$6,254,413.00	\$2,940,109.00		

Total

1000 <u>Instruction</u>	
1100 Regular Programs - Elementary / Secondary	41,531,401.00
1200 Special Programs - Elementary / Secondary	13,128,640.00
1300 Vocational Education	687,133.00
1400 Other Instructional Programs - Elementary / Secondary	13,936.00
1500 Nonpublic School Programs	14,970.00
Total Instruction	\$55,376,080.00
2000 <u>Support Services</u>	
2100 Support Services - Students	3,338,603.00
2200 Support Services - Instructional Staff	1,914,116.00
2300 Support Services - Administration	4,865,783.00
2400 Support Services - Pupil Health	1,090,597.00
2500 Support Services - Business	686,864.00
2600 Operation and Maintenance of Plant Services	6,429,235.00
2700 Student Transportation Services	5,748,616.00
2800 Support Services - Central	2,580,517.00
2900 Other Support Services	86,896.00
Total Support Services	\$26,741,227.00
3000 <u>Operation of Non-Instructional Services</u>	
3200 Student Activities	2,290,641.00
3300 Community Services	70,950.00
Total Operation of Non-Instructional Services	\$2,361,591.00
4000 <u>Facilities Acquisition, Construction and Improvement Services</u>	
4200 Existing Site Improvement Services	826,853.00
4400 Architecture and Engineering Services / Educational Specifications - Improvements	642,327.00
4600 Existing Building Improvement Services	6,294,687.00
Total Facilities Acquisition, Construction and Improvement Services	\$7,763,867.00
5000 <u>Other Expenditures and Financing Uses</u>	
5100 Debt Service / Other Expenditures and Financing Uses	10,517,519.00
5200 Interfund Transfers - Out	9,047,676.00
Total Other Expenditures and Financing Uses	\$19,565,195.00
TOTAL ACTUAL EXPENDITURES & OTHER FINANCING USES	\$111,807,960.00

LEA : 103021003 Pine-Richland SD

Printed 11/30/2023 8:54:51 AM

PSERS Salary Data (Salary Data should relate to the General Fund only)

Amount Description	Amount
Total Salary Base for salaries subject to PSERS withholding	42,242,876.85
Total Federally Funded salaries subject to PSERS withholding	740,237.20
	<hr/>

Title I Expenditure Data

Amount Description	Amount
Expenditures Funded with Current Title I Funds	138,118.00
Expenditures Funded with Carry over Title I Funds	
Total Title I Expenditure Data	<hr/> \$138,118.00 <hr/>

Title IV Revenue Data

Amount Description	Amount
Revenue from Title IV-A-1: Student Support and Academic Enrichment Grants	10,993.00
Revenue from Title IV-B: 21st Century Community Learning Centers	
	<hr/>

Title V Revenue Data

Amount Description	Amount
Revenue from Title V-B-2: Rural and Low-Income School Programs	
Revenue from Title V-B-1: Small Rural School Achievement (Directly from the Federal Govt)	
	<hr/>

1.	<u>Current Special Education Expenditures within Function 1000</u> See list of exclusions in the note below.	10,567,329.54
2.	<u>Current Special Education Expenditures within Function 2000</u> See list of exclusions in the note below.	5,118,228.62
2A.	<u>Current Special Education Expenditures within Sub-Function 2100</u> This data should also be included in line 2 above. See list of exclusions in the note below.	533,642.43
2B.	<u>Current Special Education Expenditures within Sub-Function 2200</u> This data should also be included in line 2 above. See list of exclusions in the note below.	463,903.78
2C.	<u>Current Special Education Expenditures within Sub-Function 2700</u> This data should also be included in line 2 above. See list of exclusions in the note below.	1,730,935.45
3.	<u>Current Special Education Expenditures within Sub-Function 3100</u> See list of exclusions in the note below.	313,247.28
4.	<u>Current Special Education Expenditures within Sub-Function 3200</u> See list of exclusions in the note below.	358,904.69

Note: The Current Special Education Expenditure amounts for each line should be calculated as follows:

- * Include the total expenditures for special education costs from all governmental funds and the food service fund 51 for the function/sub-function requested
- * Exclude data from sub-functions: 1243,1450,1500,1600,1807,2280,2450,2750,2990
- * Exclude data from objects: 322,511,512,516,561,562,564,566,592,593,594,595,596,597,700,830,899

Benefits for Staff Relative to Collective Bargaining Agreements

	OBJECT	COVERED	NOT COVERED	TOTAL
10 General Fund	No Self Insurance data to report			
	211 Medical Insurance	7,228,915.98	679,317.23	7,908,233.21
	212 Dental Insurance	384,516.81	36,133.90	420,650.71
	215 Eye Care Insurance	76,903.36	7,226.78	84,130.14
	216 Prescription Insurance			
	271 Self-Insurance Medical Benefits			
	272 Self-Insurance Dental Benefits			
	275 Self-Insurance Eye Care Benefits			
	276 Self-Insurance Prescription Benefits			
	FUND TOTAL	\$7,690,336.15	\$722,677.91	\$8,413,014.06
50 Enterprise Fund	No Self Insurance data to report			
	211 Medical Insurance			
	212 Dental Insurance			
	215 Eye Care Insurance			
	216 Prescription Insurance			
	271 Self-Insurance Medical Benefits			
	272 Self-Insurance Dental Benefits			
	275 Self-Insurance Eye Care Benefits			
	276 Self-Insurance Prescription Benefits			
	FUND TOTAL			
60 Internal Service Fund	No Self Insurance data to report			
	211 Medical Insurance			
	212 Dental Insurance			
	215 Eye Care Insurance			
	216 Prescription Insurance			
	271 Self-Insurance Medical Benefits			
	272 Self-Insurance Dental Benefits			
	275 Self-Insurance Eye Care Benefits			
	276 Self-Insurance Prescription Benefits			
	FUND TOTAL			
Total of All Funds		\$7,690,336.15	\$722,677.91	\$8,413,014.06

LEA : 103021003 Pine-Richland SD

Printed 11/30/2023 8:54:57 AM

Function	Special Education (Prior Year)	Nonspecial Education (Prior Year)	Total (Prior Year)	Special Education (Current Year)	Nonspecial Education (Current Year)	Total (Current Year)
2120 Guidance Services	294,789.00	1,663,300.00	1,958,089.00	319,528.15	1,677,302.74	1,996,830.89
2140 Psychological Services	101,186.00	570,921.00	672,107.00	113,385.07	595,193.53	708,578.60
2150 Speech Pathology and Audiology Services						
2160 Social Work Services	17,846.00	100,692.00	118,538.00	20,386.53	107,015.27	127,401.80
2260 Instruction and Curriculum Development Services	360,888.00		360,888.00	390,348.00		390,348.00
2350 Legal and Accounting Services	24,662.00	257,783.00	282,445.00	35,444.00	322,433.80	357,877.80
2420 Medical Services		22,595.00	22,595.00		20,593.00	20,593.00
2440 Nursing Services	163,559.00	922,857.00	1,086,416.00	170,309.00	894,006.00	1,064,315.00
2700 Student Transportation Services	1,065,770.00	4,349,338.00	5,415,108.00	1,307,553.53	4,441,061.62	5,748,615.15
Total	\$2,028,700.00	\$7,887,486.00	\$9,916,186.00	\$2,356,954.28	\$8,057,605.96	\$10,414,560.24

LEA : 103021003 Pine-Richland SD

Printed 11/30/2023 8:54:59 AM

(PRINCIPAL AMOUNTS ONLY)

GOVERNMENTAL FUNDS/ ACTIVITIES

	Short-Term Borrowing	General Obligation Bonds/Notes	Authority Building Obligations	Leases, Other Right to Use Arrangements	Extended Term Financing Agreements	Other Long Term Debt/Liabilities	OPEB, Comp Abs, Net Pension Liab	Total
1. Debt at Beginning of Fiscal Year		100,835,000.00		601,181.00			113,197,654.00	214,633,835.00
2. Additional Debt Incurred During Year							9,193,200.00	9,193,200.00
3. Retirements and Repayments		5,775,000.00		284,041.00			1,348,000.00	7,407,041.00
4. Debt at End of Fiscal Year		95,060,000.00		317,140.00			121,042,854.00	216,419,994.00
5. Accreted Interest at End Of Fiscal Year		7,380,410.00						7,380,410.00
6. Total Debt and Accreted Interest		102,440,410.00		317,140.00			121,042,854.00	223,800,404.00
7. Current Portion P&I - Due within 1 year		8,925,380.00		297,719.00				9,223,099.00
8. Interest Paid during current fiscal year		2,948,275.00		13,679.00				2,961,954.00

(PRINCIPAL AMOUNTS ONLY)

PROPRIETARY FUNDS

- 1. Debt at Beginning of Fiscal Year
- 2. Additional Debt Incurred During Year
- 3. Retirements and Repayments
- 4. Debt at End of Fiscal Year
- 5. Accreted Interest at End Of Fiscal Year
- 6. Total Debt and Accreted Interest
- 7. Current Portion P&I - Due within 1 year
- 8. Interest Paid during current fiscal year

Total Principal and Interest Payments Made by Your School - All Funds

Function	Fund		Principal (910)	Principal (920)	Interest (830)	Total (Principal +Interest)	Misc Other Uses (990)
5110	10	General Fund	5,775,000.00		2,948,275.00	8,723,275.00	
5110	20	Special Revenue Funds					
5110	30	Capital Projects Funds					1,209,654.00
5110	40	Debt Service Fund					
5110	90	Permanent Fund					
5120	10	General Fund					
5120	20	Special Revenue Funds					
5120	30	Capital Projects Funds					
5120	40	Debt Service Fund					
5140	10	General Fund	284,041.00		13,679.00	297,720.00	
5140	20	Special Revenue Funds					
5140	30	Capital Projects Funds					
5140	40	Debt Service Fund					
5140	90	Permanent Fund					
Total Debt Payments - Governmental Funds			\$6,059,041.00		\$2,961,954.00	\$9,020,995.00	\$1,209,654.00

Function	Fund		Principal (910)	Principal (920)	Interest (830)	Total (Principal +Interest)
5110	50	Enterprise Fund				
5110	60	Internal Service Fund				
5120	50	Enterprise Fund				
5120	60	Internal Service Fund				
5140	50	Enterprise Fund				
5140	60	Internal Service Fund				

Total Debt Payments - Proprietary Funds

Debt Details
Governmental Funds/ Activities

Debt Category	Debt Issue Date (MM/YYYY)	Principal Amounts Only			Debt at End of Fiscal Year	Current Portion Due Within One Year (Principal and Interest)	Interest Paid During Fiscal Year
		Debt at Beginning of Fiscal Year	Additions	Reductions / Repayments			
General Obligation Bonds/Notes – CIB	10/2023	7,335,000.00		325,000.00	7,010,000.00	595,913.00	272,537.00
General Obligation Bonds/Notes – CIB	06/2022	5,885,000.00		15,000.00	5,870,000.00	186,185.00	172,356.00
General Obligation Bonds/Notes – CIB	04/2021	4,130,000.00		460,000.00	3,670,000.00	543,900.00	94,900.00
General Obligation Bonds/Notes – CIB	07/2020	23,735,000.00		135,000.00	23,600,000.00	1,326,500.00	976,900.00
General Obligation Bonds/Notes – CIB	11/2019	5,830,000.00		395,000.00	5,435,000.00	518,000.00	121,000.00
General Obligation Bonds/Notes – CIB	12/2019	3,245,000.00		200,000.00	3,045,000.00	288,883.00	86,883.00
General Obligation Bonds/Notes – CIB	06/2019	6,480,000.00		420,000.00	6,060,000.00	729,800.00	307,000.00
General Obligation Bonds/Notes – CIB	06/2017	7,185,000.00		140,000.00	7,045,000.00	319,893.00	182,693.00
General Obligation Bonds/Notes – CIB	10/2014	15,990,000.00		290,000.00	15,700,000.00	830,006.00	536,906.00
General Obligation Bonds/Notes – CIB	7/2020	8,560,000.00		280,000.00	8,280,000.00	471,300.00	197,100.00
General Obligation Bonds/Notes – CAB	06/1996	12,460,000.00		3,115,000.00	9,345,000.00	3,115,000.00	
Leases and Other Right to Use Arrangements		601,181.00		284,041.00	317,140.00	297,719.00	13,679.00
Other Post-Employment Benefits (OPEB)		6,099,000.00		1,348,000.00	4,751,000.00		
Net Pension Liability		105,762,000.00	9,119,000.00		114,881,000.00		
Compensated Absences		1,336,654.00	74,200.00		1,410,854.00		
Totals for Debt Entered:		\$214,633,835.00	\$9,193,200.00	\$7,407,041.00	\$216,419,994.00	\$9,223,099.00	\$2,961,954.00

LEA : 103021003 Pine-Richland SD

Printed 11/30/2023 8:54:59 AM

Accreted Interest Detail
Governmental Funds/ Activities

Debt Category	Debt Issue Date (MM/YYYY)	Beginning Accreted Interest	Additions	Reductions	Ending Accreted Interest	Ending bond Principal	Ending Principal Plus Accreted Interest
General Obligation Bonds/Notes – CAB	06/1996	9,544,734.00	271,637.00	2,435,961.00	7,380,410.00	9,345,000.00	16,725,410.00
Totals for Debt Entered:		\$9,544,734.00	\$271,637.00	\$2,435,961.00	\$7,380,410.00	\$9,345,000.00	\$16,725,410.00

General Fund (10)

Section 1: Tuition/Purchased Services as Reported within Expenditure Detail	Amount
Tuition Reported in General Fund Expenditures 1000-560	3,343,671.00
Purchased Services in General Fund Expenditures 1000-594 and 1000-597	
Section 1 Total	\$3,343,671.00

Section 2: Tuition Paid to Institution Types During Fiscal Year	Tuition Paid For Nonspecial Education	Tuition Paid For Special Education	Total
1 1306 Institutions	24,633.00	121,072.96	145,705.96
2 Institutionalized Children's Programs			
3 Juveniles Incarcerated in Adult Facilities			
4 Residential Treatment Facilities			
5 Other Local Education Agencies		208.00	208.00
6 Brick and Mortar Charter Schools	51,259.00	81,827.00	133,086.00
7 Cyber Charter Schools	365,700.00	291,262.00	656,962.00
8 Career and Technology Centers	439,765.20	247,367.92	687,133.12
9 Approved Private Schools		1,515,958.00	1,515,958.00
10 PA Chartered Schools for the Deaf and Blind			
11 Private Residential Rehabilitative Institutions			
12 Juvenile Detention Centers			
13 Special Program Jointures			
14 Other Tuition Not Included Elsewhere In This Section	4,650.00	199,967.92	204,617.92
Section 2 Total	\$886,007.20	\$2,457,663.80	\$3,343,671.00

LEA : 103021003 Pine-Richland SD

Printed 11/30/2023 8:55:08 AM

Food Service / Cafeteria Operations Fund (51)

3000 Operation of Non-Instructional Services

Total

400 Purchased Property Services

430 Repairs and Maintenance Services 43,314.00

Total Purchased Property Services \$43,314.00

500 Other Purchased Services

570 Food Service Management 1,750,941.00

Total Other Purchased Services \$1,750,941.00

600 Supplies

610 General Supplies 57,176.00

630 Food 139,343.00

650 Supplies & Fees – Technology Related 5,365.00

Total Supplies \$201,884.00

700 Property

740 Depreciation 26,766.00

Total Property \$26,766.00

800 Other Objects

810 Dues and Fees 5,032.00

Total Other Objects \$5,032.00

Total 3000 Operation of Non-Instructional Services \$2,027,937.00

LEA : 103021003 Pine-Richland SD

Printed 11/30/2023 8:55:08 AM

Food Service / Cafeteria Operations Fund (51)

	<u>Elementary</u>	<u>Secondary</u>	<u>Federal</u>	<u>Total</u>
3100 Food Services				
400 <u>Purchased Property Services</u>				
430 Repairs and Maintenance Services				43,314.00
Total Purchased Property Services				\$43,314.00
500 <u>Other Purchased Services</u>				
570 Food Service Management				1,750,941.00
Total Other Purchased Services				\$1,750,941.00
600 <u>Supplies</u>				
610 General Supplies				57,176.00
630 Food				139,343.00
650 Supplies & Fees – Technology Related				5,365.00
Total Supplies				\$201,884.00
700 <u>Property</u>				
740 Depreciation				26,766.00
Total Property				\$26,766.00
800 <u>Other Objects</u>				
810 Dues and Fees				5,032.00
Total Other Objects				\$5,032.00
Total 3100 Food Services				\$2,027,937.00

Other Enterprise Funds (58)

1000 Instruction	<u>Total</u>
600 Supplies	
610 General Supplies	3,990.00
Total Supplies	\$3,990.00
Total 1000 Instruction	\$3,990.00

LEA : 103021003 Pine-Richland SD

Printed 11/30/2023 8:55:03 AM

Other Enterprise Funds (58)

1100 Regular Programs – Elementary / Secondary

Elementary

Secondary

Federal

Total

600 Supplies

610 General Supplies

3,990.00

Total Supplies

\$3,990.00

Total 1100 Regular Programs – Elementary / Secondary

\$3,990.00

LEA : 103021003 Pine-Richland SD

Printed 11/30/2023 8:55:03 AM

Other Enterprise Funds (58)

1110 Regular Programs

600 Supplies

610 General Supplies

	<u>Elementary</u>	<u>Secondary</u>	<u>Federal</u>	<u>Total</u>
Total Supplies				3,990.00
Total 1110 Regular Programs				\$3,990.00

	<u>Food Service(51)</u>	<u>Child Care Operations(52)</u>	<u>Other Enterprise(58)</u>	<u>Internal Service(60)</u>	<u>Total</u>
1000 Instruction					
1100 Regular Programs - Elementary / Secondary			3,990.00		3,990.00
Total Instruction			\$3,990.00		\$3,990.00
3000 Operation of Non-Instructional Services					
3100 Food Services	2,027,937.00				2,027,937.00
Total Operation of Non-Instructional Services	\$2,027,937.00				\$2,027,937.00
TOTAL ACTUAL EXPENDITURES & OTHER FINANCING USES	\$2,027,937.00		\$3,990.00		\$2,031,927.00

LEA : 103021003 Pine-Richland SD

Printed 11/30/2023 8:55:16 AM

Fund	School	School Number	Local Personnel	Local Nonpersonnel	State Personnel	State Nonpersonnel	Federal Personnel	Federal Nonpersonnel	Total	Explanation
10										
	Eden Hall Upper El Sch	7999	11,609,031.37	1,913,171.18	3,050,596.23	502,739.00	264,386.32	33,080.04	17,373,004.14	
	Hance El Sch	7998	3,951,202.09	771,951.99	1,038,288.37	202,851.89	1,354.95	13,825.48	5,979,474.77	
	Pine-Richland HS	315	16,453,919.94	4,186,970.55	4,323,725.61	1,100,243.09	391,569.50	119,767.41	26,576,196.10	
	Pine-Richland MS	314	8,716,729.15	1,367,456.69	2,290,563.29	359,337.32	299,859.78	34,195.95	13,068,142.18	
	Richland El Sch	7997	4,957,181.04	973,437.48	1,302,637.35	255,797.81	274,530.60	15,117.66	7,778,701.94	
	Wexford El Sch	7996	4,469,259.19	793,734.17	1,174,422.30	208,575.76	327.15	34,613.23	6,680,931.80	
Total			50,157,322.78	10,006,722.06	13,180,233.15	2,629,544.87	1,232,028.30	250,599.77	77,456,450.93	