

Process Improvement Meeting Agenda – 6/10

- MEVA Mission and Vision.
- Progress Monitoring: SY-2023/2024 Performance Framework.
- Planning: Academic Refinement Areas.
- SY-2023/2024 Weekly Process Improvement (PI) Meetings Overview.
- Win over the student initiative.
- Year End Transition (YET) Reminder – Stephanie Emery.
- Progress Monitoring: End of Year Recap – Christina O’Grady.
- National Honor Society (NHS) Community Service Update – Matt Corbett and Colleen Ford.
- Evidence-Based Practice: Removing Barriers from Summer Reading – Don Fournier.
- Planning: MEVA SY-2024/2025 Professional Development, August 12th – 23rd.
- Other and next Process Improvement (PI) Meeting on **Monday, August 19th, 3:00 pm.**

MEVA Mission and Vision

School Mission:

Maine Virtual Academy's (MEVA) mission is to develop each student's full potential with learner-centered instruction, research-based curriculum and educational tools and resources to provide a high-quality learning experience for grade 7-12 students who are in need of alternative educational options. **MEVA will develop an Individualized Learning Plan (ILP) with specific learning goals to meet each student's needs.** MEVA's rigorous curriculum is aligned to the eight Maine content areas, the Maine Learning Results, the Common Core State Standards and the Next Generation Science Standards.

School Vision:

MEVA will be a leading 21st century public charter school in Maine and will improve student learning outcomes through individualized instruction, as evidenced by student academic proficiency, student academic growth, post-secondary readiness, and the demonstration of 21st century skills such as critical thinking, problem solving, and self-direction. MEVA will empower students to acquire the academic and life skills needed to succeed in post-secondary education and career opportunities. Our graduates will be prepared for college or other postsecondary career training opportunities

Progress Monitoring: MEVA's MCSC Performance Framework

- MEVA is meeting/exceeding our MCSC performance measures.
- To improve, we need to focus on NWEA MAP Growth (fall to spring) for all subgroups, particularly in reading.
- Building students' math proficiency, as measured by the MTY, is an ongoing priority.
- We would like to see a higher percentage of SE students achieving college readiness on the math Accuplacer.
- We are well positioned to make a big difference in SY-2024/2025 academic outcomes.
- MEVA's academic strategies focus on assessment, course placement/instruction, evidence-based practices and progress monitoring, within our MTSS framework.

Planning: Academic Refinement Areas

- Assessments – Data Analysis.
- Curriculum Maps.
- Course placements.
- Evidence-Based Practices.
- Progress Monitoring.
- MTSS framework.

SY-2023/2024 Weekly Process Improvement (PI) Meetings Overview

- We hosted thirty-three (33) Weekly Process Improvement (PI) Meetings during SY-2023/2024.
- PI Meetings provide a venue for sharing school goals and progress monitoring. We also provide ongoing training in evidence-based practices, tapping into faculty talent and expertise.
- Meeting materials are posted at <https://www.mainevirtualacademy.org/essaesserlaul-resources/meva-process-improvement-meeting-materials>
- Thank you for your presentations and participation!

Win Over the Student!

Thoughtful and consistent communication is the foundation on building successful rapport with our families and students.

Immediate intervention has been recognized as the most effective method in student retention. Every role within the school plays an important part in this effort.

Without our Students there would
be no MEVA!

Win Over & Rapport

- **Win Over**: is a proactive approach/mindset. Win “back” is more reactive and is also needed in some cases, like in progress withdrawals as an example.
- **Rapport Definition**:
 - The Merriam-Webster Dictionary defines Rapport as; *a friendly, harmonious relationship especially : a relationship characterized by agreement, mutual understanding, or empathy that makes communication possible or easy.*
- **Google Dictionary - Examples of Further Meaning**:
 - 1. Rapport is a good sense of understanding and trust.
 - 2. A close and harmonious relationship in which the people or groups concerned understand each other's feelings or ideas and communicate well. Example, *"she was able to establish a good rapport with the children"*

Communication

- In ALL Cases;
 - Communication should always exhibit compassion, empathy and kindness.
 - Be an effective communicator, timely and responsive.
 - Exhibit a willingness to help and serve our families well.
 - Never forget to share the vast opportunities we have at MEVA to support our students!

Withdrawal Mitigation Process

- **Ask why?** – Use phrases like, “*Before* you withdraw, tell me about your reason. There may be something we can do for you.”
- **Listen for keywords;** lack of support, socialization, motivation challenges, tech or navigation challenges and so forth.
- **As you listen, empathize** – Understand their position and their feelings. Many times, families or students have been thinking about withdrawal for a while.
- **Advocate for MEVA’s programs** – Share information on our clubs, self-paced options, and student support opportunities. See if they are willing to have a team meeting to talk over work credit options, early college opportunities, and so much more. Some students may qualify for early graduation.
- **Document, document, document** – your mitigation efforts in contact logs within Infinite Campus, then *submit an intervention form*. Familiarize yourself with the form selections to be aware of the kinds of barriers that lead to withdrawals.
- **Link to the form:** [23-24 Rapid Intervention Form \(RIF\)](#)

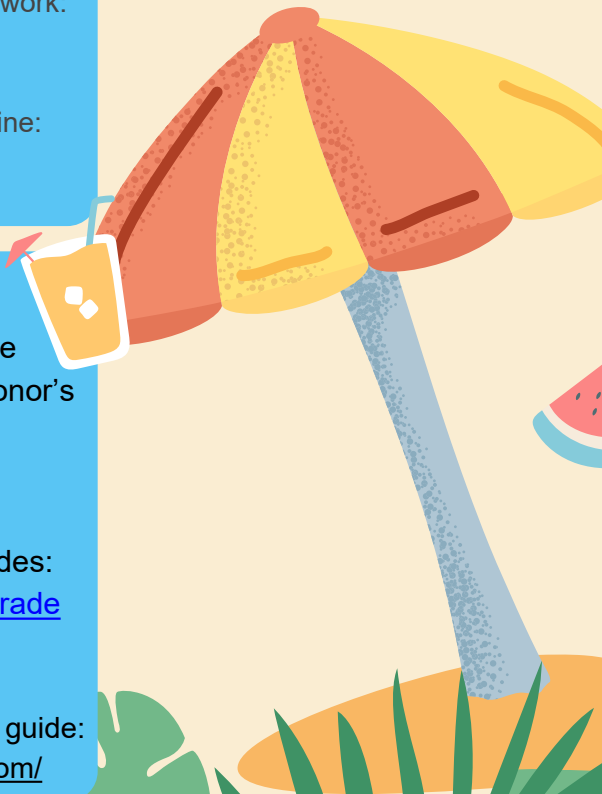
YET REMINDERS



- Last day for students to submit work:
June 14th
- Gradebook submission deadline:
June 17th.

Links:

- Report student's who are designated as completing honor's level work:
[Earned Honors 23-24](#)
- Final async/self paced grades:
[23-24 Async Courses - Final Grade Form](#)
- SET/YET step by step training guide:
<https://meva-me.safeschools.com/>



Don't Forget!



- Set your grade scheme to the "MEVA Default" before exporting.
- Please select the correct data options to export.
(See YET slides and/or refer to the faculty email sent on Monday, 6/10).
- Set ALL 24-25 course visibility to "Hidden".

When you return in August:

- Do not forget to schedule your students in Virtual Classroom. This way student's will be able to see dates & times on their calendars.
- The night before or morning of the first school day, make sure your class content is fully visible to your students.



THANK YOU & HAVE A WONDERFUL SUMMER BREAK!

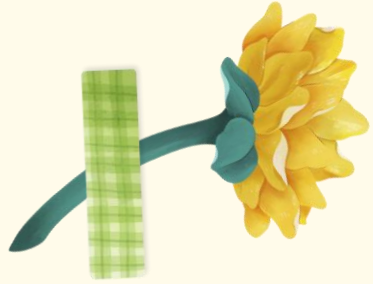
For Questions.

semery@mainevirtualacademy.or



End of Year Recap

June 10, 2024



Literacy Grant

Schedule of Remaining Meetings:

June 20th from 9-11am

July 25th from 9-11am

August 1st from 9-11am

August 9th from 9-11am



Book Study



MTSS

MTSS is making a positive impact on student's meeting their growth targets.



	Spring Total Tested	Total Met Growth	Percent Met Growth	Total Did Not Meet Growth	Percent Did Not Meet Growth
Reading	104	52	50.00%	52	50.00%
Math	108	52	48.15%	56	51.85%
*Growth is defined as meeting their NWEA Growth Target					

Tier 2

Tier 3

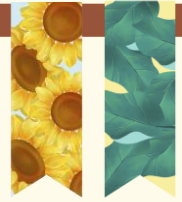
Reading - Spring Data

	Total # Students per Grade Level	Tier 2	% Tier 2	% Absent	% Level 1 (Present, not Responding)	% Level 2-4 (Engaging)	Tier 3	% Tier 3	% Absent	% Level 1 (Present, not Responding)	% Level 2-4 (Engaging)
7th Grade	25	6	24.00%	5%	38%	28%	1	4.00%	No Data	No Data	No Data
8th Grade	67	16	23.88%	19%	33%	24%	6	8.96%	39%	31%	15%
9th Grade	82	16	19.51%	30%	18%	26%	4	4.88%	40%	19%	21%
10th Grade	85	25	29.41%	35%	15%	25%	2	2.35%	66%	10%	12%
11th Grade	103	19	18.45%	48%	8%	22%	12	11.65%	50%	13%	19%
12th Grade	49	5	10.20%	42%	3%	27%	0	0.00%	NA	NA	NA
Schoolwide	411	87	21.17%	30%	19%	25%	25	6.08%	49%	18%	17%

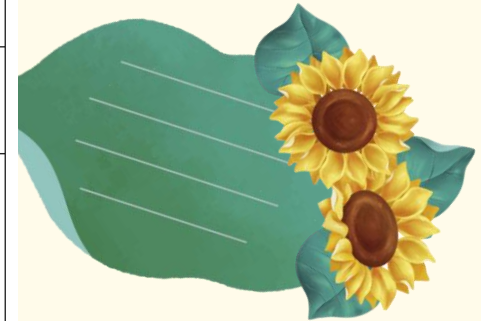
*This data reflects the Spring Engagement

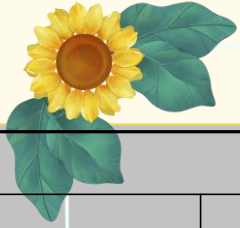
*Tier 3 for the Spring represents RISE students and Tier 2 students who did not grow in the Fall

SY2024/2025 Assessment Calendar



Assessment Type	Fall Dates	Winter Dates	Spring Dates
NWEA	September 10, 11, & 12, 2024 (Makeup Day - September 13, 2024)	January 14, 15, & 16, 2025 (Makeup Day - January 17, 2025)	**May 6, 7, & 8, 2025 (Makeup Day - May 9, 2025)
MEA (ELA & Math)	October 7-25, 2024 (tentative)	NA	May 15-30, 2025
MEA (Science)	NA	NA	May 19-30, 2025 (tentative)
ACCUPLACER	September 10, 11, & 12, 2024, with makeup days scheduled throughout the year	Ongoing	Ongoing
IReady	7 th & 8 th Graders - Standards Mastery assessment, August 26-30, 2024 8 th Graders for Fall 2024 - June 3-7, 2024 9 th Graders for Fall 2024 - throughout the summer and August 26-30, 2024 10 th Grader (new only) for Fall 2024 - diagnostic in the Fall ONLY to inform MTSS practice related to Algebra I skills	January 16-24, 2025 (For mid-year enrollees only)	May 1-June 6, 2025





Maine Through Year

The next 3 slides compares MEVA to the State - grades 7, 8, & 10 ONLY.

Based on the performance framework we are not meeting the math proficiency (we are ~1% off from partially meeting).

We are meeting the proficiency measure in reading.

State 2023-24 Comparison (All)			
	% At/Above	MEVA % At/Above	Difference
Math	39.68%	23.84%	-15.85%
Reading	64.30%	62.21%	-2.10%
State 2023-24 Comparison (Enrolled 10/1/23)			
	% At/Above	MEVA % At/Above	Difference
Math	39.68%	23.72%	-15.97%
Reading	64.30%	62.18%	-2.13%



Maine Through Year

Based on the performance framework we are meeting proficiency for Special Education students in both math and reading.

We are meeting the proficiency measure in math and exceeding the measure in reading for economically disadvantaged students.

State 2023-24 Comparison - Special Education

	% At/Above	MEVA % At/Above	Difference
Math	10.31%	7.89%	-2.41%
Reading	31.70%	28.95%	-2.75%

State 2023-24 Comparison - Economically Disadvantaged

	% At/Above	MEVA % At/Above	Difference
Math	25.57%	20.88%	-4.69%
Reading	51.98%	60.44%	8.46%



Maine Through Year

State 2023-24 Comparison - Female

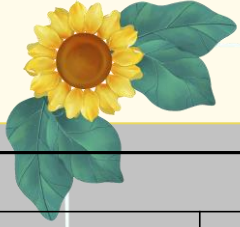
	% At/Above	MEVA % At/Above	Difference
Math	38.67%	20.59%	-18.08%
Reading	69.68%	61.76%	-7.91%

State 2023-24 Comparison - Male

	% At/Above	MEVA % At/Above	Difference
Math	40.68%	28.57%	-12.11%
Reading	58.60%	62.86%	4.26%

Based on the performance framework we are not meeting proficiency in math and partially meeting in reading for female students.

For male students, we are partially meeting in math and meeting in reading.



Maine Through Year

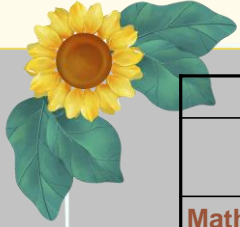
This comparison is based on the state average for all grades assessed, 3-8 and HS.

Based on the performance framework we are not meeting the math proficiency.

We are meeting the proficiency measure in reading.

State 2023-24 Comparison (All)			
	% At/Above	MEVA % At/Above	Difference
Math	47.18%	23.84%	-23.34%
Reading	64.30%	62.21%	-2.09%
State 2023-24 Comparison (Enrolled 10/1/23)			
	% At/Above	MEVA % At/Above	Difference
Math	47.18%	23.72%	-23.46%
Reading	64.30%	62.18%	-2.12%

Maine Through Year



State 2023-24 Comparison - 7th Grade			
	% At/Above	MEVA % At/Above	Difference
Math	38.00%	20.00%	-18.00%
Reading	68.00%	65.00%	-3.00%
State 2023-24 Comparison - 8th Grade			
	% At/Above	MEVA % At/Above	Difference
Math	39.00%	21.21%	-17.79%
Reading	64.00%	66.67%	2.67%
State 2023-24 Comparison - High School			
	% At/Above	MEVA % At/Above	Difference
Math	42.00%	25.30%	-16.70%
Reading	61.00%	57.83%	-3.17%

This is a grade level comparison of “At & Above State Expectations” for MEVA and the State.

We are not meeting in math across the grade levels and are meeting in reading.

MEVA NHS members have completed 347.5 hours of community service over the past year, and this number continues to rise as members complete their projects.

Projects have included:

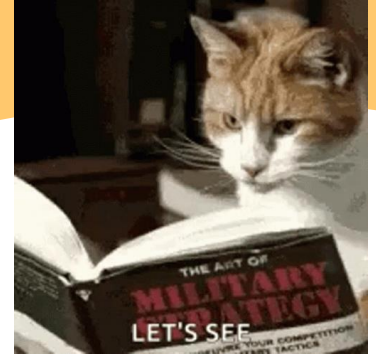
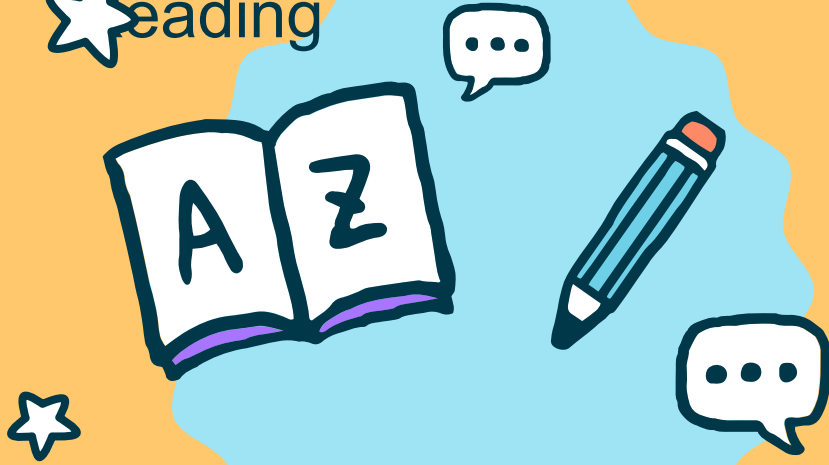
- Pen-pal letter writing with seniors in care homes
- Educational garden and trail maintenance at Wolf's Neck Farms
- Educational outreach in nursing techniques
- Web design for a local charity
- Various volunteer opportunities at Humane Societies, homeless shelters, and food banks



We are grateful for the leadership members have demonstrated, with special acknowledgement of N. Lupercio (out-going President) and O. Tebbets (recently elected President)

Removing barriers from Summer

★ reading



SORA is the App for you!



Sora reading app extends no cost ebooks and audiobooks to remote learners



From our June Newsletter:



SUMMER READING OPTIONAL Page 3

Summer is a great time to read a good book! Several of our teachers have offered some of their favorite titles which are available in our digital library SORA at this [link](#). For additional suggestions, you can visit Maine DOE's Summer Literacy website at this [link](#). We also encourage you to visit your local public library this summer to browse and make your own selections.

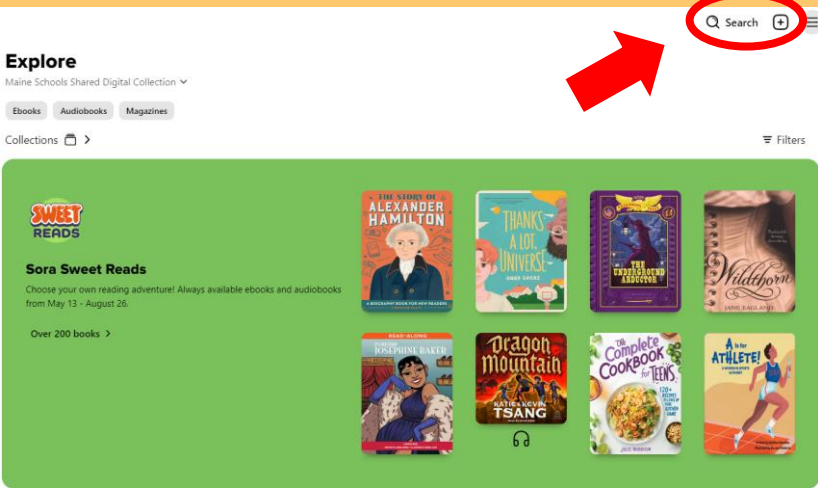


Importance:

- Provides clarity and understanding.
- Equips students with tools for comprehension.
- Fosters effective communication skills.

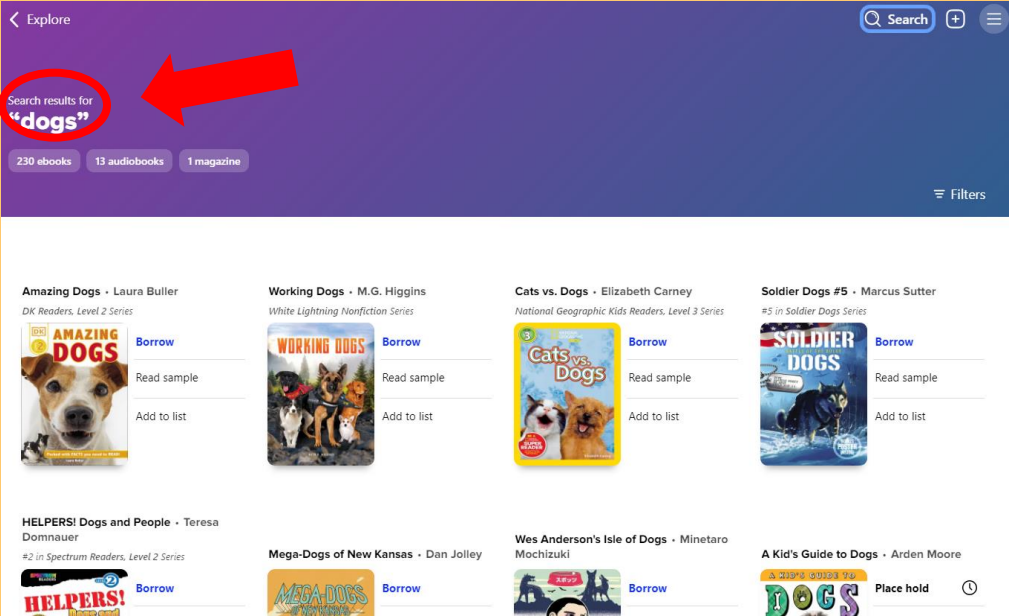


It's easy to do a SORA search:



Enter a topic in 'search' to see what you might find that interests you!

Here is what a search for 'dogs' found:



RESEARCH

Regardless of ethnicity, socioeconomic level, or previous achievement, children who read four or more books over the summer fare better on reading comprehension tests

<https://witschicago.org/importance-of-summer-reading>

Middle School

MIDDLE SCHOOL LEVEL RECOMMENDATIONS

Mrs. Pasternack's [Recommendations](#)

Mrs. Sroka's [Recommendations](#)

HIGH SCHOOL LEVEL RECOMMENDATIONS

High School

Ms. Thompson's 10th Grade [Recommendations](#)

Mrs. Hamilton's 12th Grade [Recommendations](#)

SORA Help

Having trouble finding/using SORA?

Follow this link for a helpful YouTube video produced by Mrs. Hamilton:

<https://youtu.be/wR4b2Arl0f8>

It's true!

Evidence suggests that the summer slide and continued personal reading habits over the summer can help prevent learning loss.


<https://witschicago.org/importance-of-summer-reading>



**NEXT
STEPS...**




Remind



Please include one or more of these slides during your classes for the rest of the week to highlight the importance of summer reading

Emphasize



Reiterate the importance of reading throughout the summer and possibly share what books you might have on your shelf to model this behavior.

Planning: MEVA SY-2024/2025 Professional Development, August 12th – 23rd, 2024.

- MEVA facilitates two full weeks of professional development (PD), August 12th – 23rd, 2024.
- In-person meet and greet on August 12th at the Ballard Center.
- Annual compliance trainings on the Vector platform.
- Google workspace training by Allison Mollica.
- Faculty led training on systems and practices.
- Collaboration time with your departments.
- Expect an email with the SY-2024/2025 PD schedule by August 5th.

Other

- Other topics and/or questions?
- Next Process Improvement Meeting on **Monday, August 19th, 3:00 pm.**
- MEVA virtual eighth grade recognition ceremony on **Friday, June 14th, 11:00 am.** **Live classes are cancelled during these time slots to allow participation.**
- Looking ahead, the Last Day of School is June 14th. Please cancel your live sessions to suit.
- Thank you for all that you do to support your colleagues, your students, and their families.