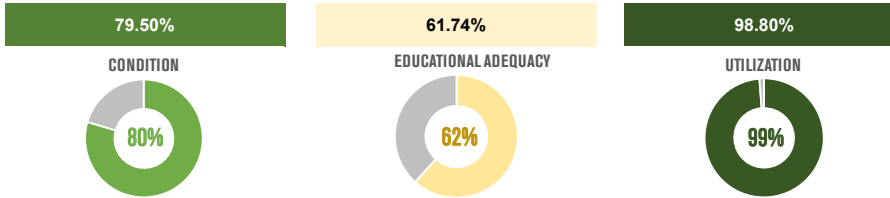


# PALISADE HIGH SCHOOL

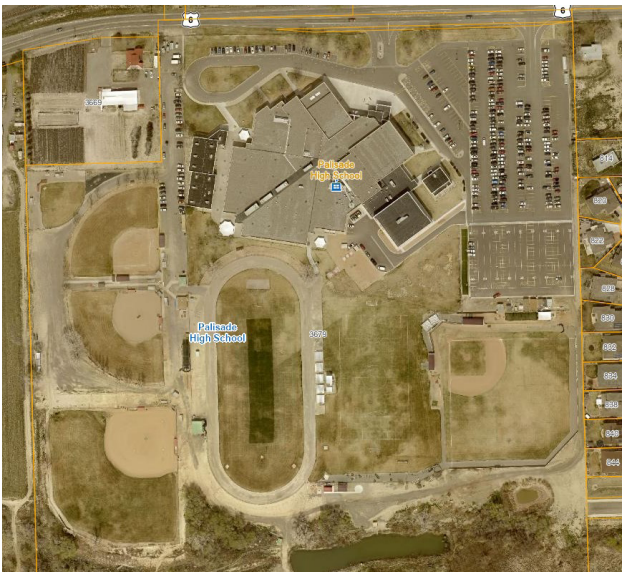
District: Mesa County Valley District 51  
 Facility: Palisade High School  
 Address: 3679 G Road  
 City: Palisade, CO  
 Site Area (AC): 42.3  
 Gross Building Area (SF): 123,748.00  
 Number of Stories: 1  
 Years Constructed / Renovated: 1991 / 1998  
 Total Replacement Value: \$71,035,683.18  
 Total Condition Budget: \$14,576,779.35  
 Facility Condition Score: 79.5%  
 Educational Adequacy Score : 62%  
 Enrollment: 1069  
 Capacity: 1082  
 Utilization (% Capacity): 99%



## NARRATIVE SUMMARY OF BUILDING AND SITE

Palisade High School is in good condition. Physical needs include replacing some HVAC equipment, lighting fixtures, exterior window and door replacement, adding fire sprinklers, and interior ceilings, paint, flooring and casework. This school's educational adequacy would benefit from modernized special education and small group support spaces, improved lighting and acoustics in the learning environments, improved science labs and science casework, better main office location (safety), and increased kitchen and cafeteria size for new equipment. The school enrollment is almost at maximum capacity and would generally be considered overcrowded.

SCHOOL SITE



# PROPOSED SCOPE

	SCOPE DESCRIPTION:	TOTAL PROJECT COST:	PHASE
<b>SAFETY + SECURITY</b>	Add bollards at exterior entry Upgrade alarm system to monitor exterior door position Add security office / vestibule	<b>\$297,000</b>	1
<b>PRIORITY MAINTENANCE + LIFE SAFETY</b>	Replace ceilings along with sprinkler system At Observatory, replace exterior doors and frames At Observatory, replace exterior stair Add full sprinkler system and fire alarm upgrade Remove security grille in corridor, replace with doors Repair science room gas nozzles and faucets	<b>\$6,671,000</b>	1
<b>LEARNING ENVIRONMENT</b>			
<b>FUTURE SCOPE</b>	Repair sidewalks, curb and gutter, and asphalt Repair building D roof patches Replace metal wall panels, hollow metal doors + frames Replace Door Hardware throughout. Repair exterior brick and soffit Replace Toilet Partitions Replace all Casework and Auditorium seating Replace Science VCT Floor Repaint school. Replace marker boards. Replace HVAC boilers, VAV boxes, exhaust fans, pumps Replace HVAC controls and science fume hoods Replace light Fixtures with LED		